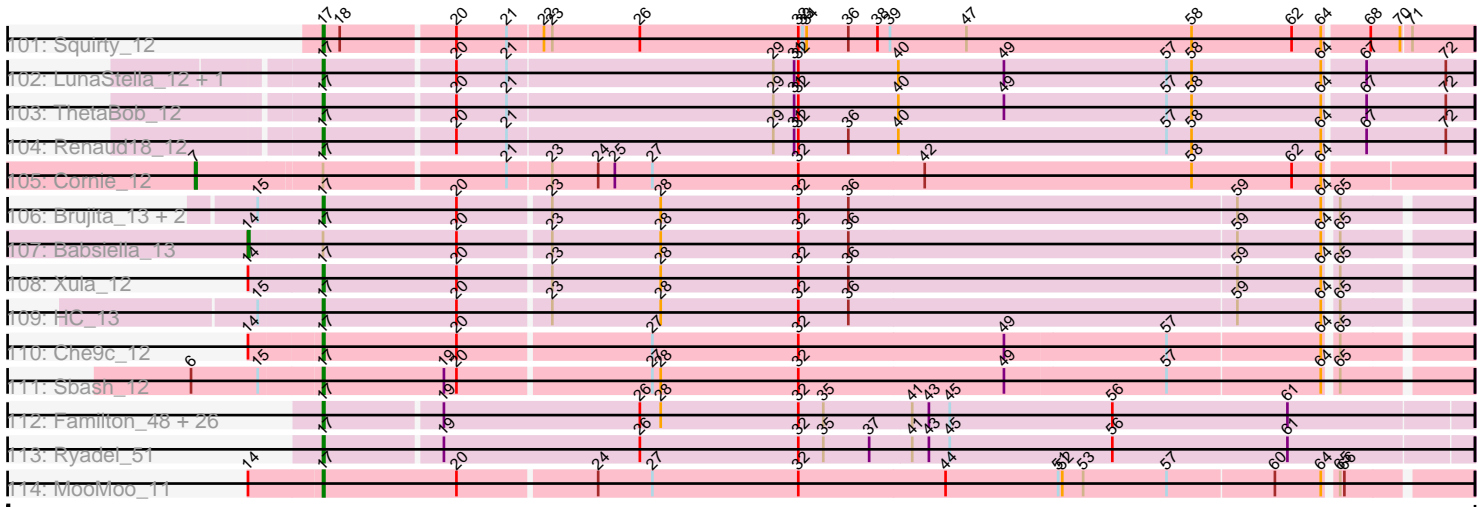


Pham 157539



Note: Tracks are now grouped by subcluster and scaled. Switching in subcluster is indicated by changes in track color. Track scale is now set by default to display the region 30 bp upstream of start 1 to 30 bp downstream of the last possible start. If this default region is judged to be packed too tightly with annotated starts, the track will be further scaled to only show that region of the ORF with annotated starts. This action will be indicated by adding "Zoomed" to the title. For starts, yellow indicates the location of called starts comprised solely of Glimmer/GeneMark auto-annotations, green indicates the location of called starts with at least 1 manual gene annotation.

Pham 157539 Report

This analysis was run 04/13/24 on database version 558.

Pham number 157539 has 265 members, 27 are drafts.

Phages represented in each track:

- Track 1 : MulchSalad_11, LittleShirley_12
- Track 2 : Hlubikazi_11, Mandlovu_11, Strokeseat_11
- Track 3 : DosHalletts_14, Spikelee_12
- Track 4 : JoeyJr_11, DaddyRickover_11, BlueCrab_11, Deb65_11, Geralt_11, BodEinwohner17_11, IbOuu_11, Nimbo_11, Doomphist_11, Poenanya_11, RedBird_11, Scottish_11, Leperchaun_11, OldBen_11, PHappiness_11
- Track 5 : Royals2015_11
- Track 6 : Bubbles123_11
- Track 7 : WillSterrel_11, DotProduct_11, Guppsters_11, Galactic_11, IrishSherpFalk_11, Shauna1_11, Spartacus_11, Phanphagia_11, LunaBlu_11
- Track 8 : Stap_12, Tootsieroll_12, Radiance_11, Karhdo_11
- Track 9 : Modragons_11, Seabastian_11, AlpineSix_11, OfUltron_11, Jinglebell_11, Llama_11, Ochi17_11
- Track 10 : Kersh_11, FreddyB_11, ByChance_11, Cabrinians_11, Priscilla_11
- Track 11 : Brocalys_11, Saal_11, GigiOuiOui_11, Pippy_11, Gorge_11
- Track 12 : DeadP_11, Taj_11, Hamulus_11
- Track 13 : Clifton_11, Zerg_11, Nitzel_12, Eradicator_11, Sandalphon_11, Minnie_11, Koella_11
- Track 14 : Wachhund_11, Beakin_12, Estave1_11
- Track 15 : Aubs_11
- Track 16 : Rockne_11, Phatniss_11, Llij_11, PMC_11
- Track 17 : Sabbb_11
- Track 18 : ArcusAngelus_11, Mozy_12, Chevrolet_10
- Track 19 : MinionDave_12
- Track 20 : lbhubesi_11, Harley_11
- Track 21 : Flathead_12
- Track 22 : SG4_11
- Track 23 : Donkeykong_11
- Track 24 : Oksu_12
- Track 25 : MadMen_11, Sparkdehlily_11, ChickenDinner_12, DocMcStuffins_12, TDanisky_11, DRBy19_11
- Track 26 : Totinger_12, Rialto_12, Moonbeam_11
- Track 27 : MisterCuddles_11, Girr_11, Spoonbill_11
- Track 28 : Juice456_12, Plumbus_12, DaWorst_12, Kimberlium_12
- Track 29 : James_11, BobaPhett_11, LastJedi_11, Mattes_11
- Track 30 : Coco12_12, LilMoolah_11
- Track 31 : Tweety_11, KristaRAM_12, Wee_11

- Track 32 : MilanaBonita_12, Akhila_12
- Track 33 : Madiba_12
- Track 34 : DillTech15_11, MilleniumForce_12, XFactor_11, ShroomBoi_11, Ardmore_11, Batiatus_11
- Track 35 : Cerasum_12, Sarma624_12, Velveteen_12, BigPhil_12, Kingsley_12
- Track 36 : UncleRicky_12, Drago_12
- Track 37 : Bobi_12, BuzzLyseyear_12
- Track 38 : Ovechkin_11, Ms6_11
- Track 39 : Inventum_11
- Track 40 : Eish_11
- Track 41 : Doug_11
- Track 42 : Hegedechwinu_12
- Track 43 : PhesterPhotato_11
- Track 44 : Boomer_12
- Track 45 : Misha28_12, TootsiePop_12
- Track 46 : Awesomesauce_12, Piper2020_12
- Track 47 : Chuckly_11
- Track 48 : Job42_12
- Track 49 : Enby_12, DirtMcgirt_12, Lorde_12
- Track 50 : JalFarm20_12
- Track 51 : Polka14_11, Pollywog_12, Sassafras_11
- Track 52 : Dorothy_11, Pacc40_11, Daenerys_11
- Track 53 : Yorick_11
- Track 54 : EleanorGeorge_11
- Track 55 : Hades_11
- Track 56 : Mahavrat_11, Juniper1_11
- Track 57 : Burwell21_11, Jarcob_11, SwagPigglett_11, Philus_11, Lizziana_11, Nivrat_11, Maravista_11, ShowerHandel_12, Zizzle_11, Martik_11
- Track 58 : Ramsey_12
- Track 59 : Gandalph_11
- Track 60 : Alexphander_12, Dante_11
- Track 61 : SassyB_11, PopTart_11
- Track 62 : RockyHorror_12, VRedHorse_11, Mantra_11
- Track 63 : RitaG_11
- Track 64 : Seagreen_12
- Track 65 : Fancypants_11
- Track 66 : OlympiaSaint_11, Crumble_11, NormanBulbieJr_11
- Track 67 : Che8_11
- Track 68 : Blexus_11
- Track 69 : Florinda_11
- Track 70 : KingMidas_11
- Track 71 : Firehouse51_11
- Track 72 : Whatsapiecost_11, Filuzino_11
- Track 73 : Mutaforma13_11
- Track 74 : Ogopogo_14
- Track 75 : Leozinho_12
- Track 76 : Girafales_12, Quico_12
- Track 77 : OwlsT2W_12
- Track 78 : StAnnes_11
- Track 79 : Veteran_11, GUmbie_11
- Track 80 : Marker_12
- Track 81 : ShiLan_11
- Track 82 : Whouxphf_11

- Track 83 : Latretium_11
- Track 84 : SimranZ1_12
- Track 85 : DLane_11
- Track 86 : Phalconet_11
- Track 87 : Phasih_11
- Track 88 : Emma_11
- Track 89 : Byougenkin_11
- Track 90 : Ruby_11
- Track 91 : Fruitloop_11, Melissauren88_11, CaptainTrips_12, QuickMath_11
- Track 92 : Frankie_12
- Track 93 : Mova_12
- Track 94 : Empress_11
- Track 95 : SuperGrey_11, Rita_11, Kenuha5_11
- Track 96 : Starcevich_12
- Track 97 : SiSi_11
- Track 98 : Krakatau_12
- Track 99 : Cornucopia_12
- Track 100 : Bipolar_11
- Track 101 : Squirty_12
- Track 102 : LunaStella_12, TChen_12
- Track 103 : ThetaBob_12
- Track 104 : Renaud18_12
- Track 105 : Cornie_12
- Track 106 : Brujita_13, QueenHazel_13, Island3_13
- Track 107 : Babsiella_13
- Track 108 : Xula_12
- Track 109 : HC_13
- Track 110 : Che9c_12
- Track 111 : Sbash_12
- Track 112 : Familton_48, YungJamal_50, Idergollasper_47, Mori_46, Blessica_48, Ashwin_46, JangDynasty_47, Bora_44, Corndog_49, Krili_46, Winget_48, Wildflower_45, Smooch_49, MadKillah_48, Alkhayr_45, SchoolBus_47, Firecracker_47, NiebruSaylor_46, TelAviv_44, Shida_47, Catdawg_47, Vorrps_46, Dylan_46, FoulBall_44, Zakhe101_47, Murai_47, Schuy_45
- Track 113 : Ryadel_51
- Track 114 : MooMoo_11

Summary of Final Annotations (See graph section above for start numbers):

The start number called the most often in the published annotations is 17, it was called in 221 of the 238 non-draft genes in the pham.

Genes that call this "Most Annotated" start:

- Akhila_12, Alexphander_12, Alkhayr_45, AlpineSix_11, ArcusAngelus_11, Ardmore_11, Ashwin_46, Aubs_11, Awesomesauce_12, Batiatus_11, Beakin_12, BigPhil_12, Bipolar_11, Blessica_48, BlueCrab_11, BobaPhett_11, Bobi_12, BodEinwohner17_11, Bora_44, Brocalys_11, Brujita_13, Bubbles123_11, Burwell21_11, BuzzLyseyear_12, ByChance_11, Byougenkin_11, Cabrinians_11, CaptainTrips_12, Catdawg_47, Cerasum_12, Che8_11, Che9c_12, Chevrolet_10, ChickenDinner_12, Chuckly_11, Clifton_11, Coco12_12, Corndog_49,

Cornucopia_12, Crumble_11, DLane_11, DRBy19_11, DaWorst_12, DaddyRickover_11, Dante_11, DeadP_11, Deb65_11, DillTech15_11, DirtMcgirt_12, DocMcStuffins_12, Donkeykong_11, Doomphist_11, DosHalletts_14, DotProduct_11, Doug_11, Dylan_46, Eish_11, EleanorGeorge_11, Emma_11, Enby_12, Eradicator_11, Estave1_11, Familton_48, Fancypants_11, Filuzino_11, Firecracker_47, Firehouse51_11, Flathead_12, Florinda_11, FoulBall_44, Frankie_12, FreddyB_11, Fruitloop_11, GUmble_11, Galactic_11, Gandolph_11, Geralt_11, GigiOuiOui_11, Girafales_12, Girr_11, Gorge_11, Guppsters_11, HC_13, Hades_11, Hamulus_11, Harley_11, Hegedechwinu_12, Hlubikazi_11, IbOuu_11, Ibhubesi_11, Idergollasper_47, IrishSherpFalk_11, Island3_13, JalFarm20_12, James_11, JangDynasty_47, Jarcob_11, Jinglebell_11, Job42_12, JoeyJr_11, Juice456_12, Juniper1_11, Karhdo_11, Kenuha5_11, Kersh_11, Kimberlium_12, KingMidas_11, Kingsley_12, Koella_11, Krakatau_12, Krili_46, KristaRAM_12, LastJedi_11, Latretium_11, Leozinho_12, Leperchaun_11, LilMoolah_11, LittleShirley_12, Lizziana_11, Llama_11, Llij_11, Lorde_12, LunaBlu_11, LunaStella_12, MadKillah_48, MadMen_11, Madiba_12, Mahavrat_11, Mandlovu_11, Mantra_11, Maravista_11, Marker_12, Martik_11, Mattes_11, Melissauren88_11, MilanaBonita_12, MilleniumForce_12, MinionDave_12, Minnie_11, Misha28_12, MisterCuddles_11, Modragons_11, MooMoo_11, Moonbeam_11, Mori_46, Mova_12, Mozy_12, Ms6_11, MulchSalad_11, Murai_47, Mutaforma13_11, NiebruSaylor_46, Nimbo_11, Nitzel_12, Nivrat_11, NormanBulbieJr_11, Ochi17_11, OfUltron_11, Oksu_12, OldBen_11, OlympiaSaint_11, Ovechkin_11, OwlsT2W_12, PHappiness_11, PMC_11, Phalconet_11, Phanphagia_11, Phasih_11, Phatniss_11, PhesterPhotato_11, Philus_11, Piper2020_12, Pippy_11, Plumbus_12, Poenanya_11, Polka14_11, Pollywog_12, PopTart_11, Priscilla_11, QueenHazel_13, QuickMath_11, Quico_12, Radiance_11, Ramsey_12, RedBird_11, Renaud18_12, Rialto_12, Rita_11, Rockne_11, RockyHorror_12, Royals2015_11, Ryadel_51, Saal_11, Sabbb_11, Sandalphon_11, Sarma624_12, Sassafras_11, SassyB_11, Sbash_12, SchoolBus_47, Schuy_45, Scottish_11, Sebastian_11, Seagreen_12, Shauna1_11, Shida_47, ShowerHandel_12, ShroomBoi_11, SiSi_11, SimranZ1_12, Smooch_49, Sparkdehlily_11, Spartacus_11, Spikelee_12, Spoonbill_11, Squirty_12, StAnnes_11, Stap_12, Strokeseat_11, SuperGrey_11, SwagPigglett_11, TChen_12, TDanisky_11, Taj_11, TelAviv_44, ThetaBob_12, TootsiePop_12, Tootsieroll_12, Totinger_12, Tweety_11, VRedHorse_11, Velveteen_12, Veteran_11, Vorrrps_46, Wachhund_11, Wee_11, Whatsapiecost_11, Whouxphf_11, Wildflower_45, WillSterrel_11, Winget_48, XFactor_11, Xula_12, Yorick_11, YungJamal_50, Zakhe101_47, Zerg_11, Zizzle_11,

Genes that have the "Most Annotated" start but do not call it:

- Babsiella_13, Blexus_11, Boomer_12, Cornie_12, Daenerys_11, Dorothy_11, Drago_12, Empress_11, Inventum_11, Ogopogo_14, Pacc40_11, RitaG_11, Ruby_11, SG4_11, ShiLan_11, Starcevich_12, UncleRicky_12,

Genes that do not have the "Most Annotated" start:

-

Summary by start number:

Start 7:

- Found in 1 of 265 (0.4%) of genes in pham
- Manual Annotations of this start: 1 of 238
- Called 100.0% of time when present
- Phage (with cluster) where this start called: Cornie_12 (F5),

Start 8:

- Found in 9 of 265 (3.4%) of genes in pham
- Manual Annotations of this start: 3 of 238
- Called 33.3% of time when present
- Phage (with cluster) where this start called: Boomer_12 (F1), Empress_11 (F1), RitaG_11 (F1),

Start 9:

- Found in 59 of 265 (22.3%) of genes in pham
- Manual Annotations of this start: 9 of 238
- Called 15.3% of time when present
- Phage (with cluster) where this start called: Blexus_11 (F1), Daenerys_11 (F1), Dorothy_11 (F1), Drago_12 (F1), Inventum_11 (F1), Pacc40_11 (F1), ShiLan_11 (F1), Starcevich_12 (F1), UncleRicky_12 (F1),

Start 10:

- Found in 20 of 265 (7.5%) of genes in pham
- Manual Annotations of this start: 1 of 238
- Called 5.0% of time when present
- Phage (with cluster) where this start called: SG4_11 (F1),

Start 13:

- Found in 50 of 265 (18.9%) of genes in pham
- Manual Annotations of this start: 2 of 238
- Called 4.0% of time when present
- Phage (with cluster) where this start called: Ogopogo_14 (F1), Ruby_11 (F1),

Start 14:

- Found in 4 of 265 (1.5%) of genes in pham
- Manual Annotations of this start: 1 of 238
- Called 25.0% of time when present
- Phage (with cluster) where this start called: Babsiella_13 (I1),

Start 17:

- Found in 265 of 265 (100.0%) of genes in pham
- Manual Annotations of this start: 221 of 238
- Called 93.6% of time when present
- Phage (with cluster) where this start called: Akhila_12 (F1), Alexphander_12 (F1), Alkhayr_45 (O), AlpineSix_11 (F1), ArcusAngelus_11 (F1), Ardmore_11 (F1), Ashwin_46 (O), Aubs_11 (F1), Awesomesauce_12 (F1), Batiatus_11 (F1), Beakin_12 (F1), BigPhil_12 (F1), Bipolar_11 (F1), Blessica_48 (O), BlueCrab_11 (F1), BobaPhett_11 (F1), Bobi_12 (F1), BodEinwohner17_11 (F1), Bora_44 (O), Brocalys_11 (F1), Brujita_13 (I1), Bubbles123_11 (F1), Burwell21_11 (F1), BuzzLyseyear_12 (F1), ByChance_11 (F1), Byougenkin_11 (F1), Cabrinians_11 (F1), CaptainTrips_12 (F1), Catdawg_47 (O), Cerasum_12 (F1), Che8_11 (F1), Che9c_12 (I2), Chevrolet_10 (F1), ChickenDinner_12 (F1), Chuckly_11 (F1), Clifton_11 (F1), Coco12_12 (F1), Corndog_49 (O), Cornucopia_12 (F1), Crumble_11 (F1), DLane_11 (F1), DRBy19_11 (F1), DaWorst_12 (F1), DaddyRickover_11 (F1), Dante_11 (F1), DeadP_11 (F1), Deb65_11 (F1), DillTech15_11 (F1), DirtMcgirt_12 (F1), DocMcStuffins_12 (F1), Donkeykong_11 (F1), Doomphist_11 (F1), DosHalletts_14 (F1), DotProduct_11 (F1), Doug_11 (F1), Dylan_46 (O), Eish_11 (F1), EleanorGeorge_11 (F1), Emma_11 (F1), Enby_12 (F1), Eradicator_11 (F1),

Estave1_11 (F1), Familton_48 (O), Fancypants_11 (F1), Filuzino_11 (F1),
 Firecracker_47 (O), Firehouse51_11 (F1), Flathead_12 (F1), Florinda_11 (F1),
 FoulBall_44 (O), Frankie_12 (F1), FreddyB_11 (F1), Fruitloop_11 (F1), GUmble_11
 (F1), Galactic_11 (F1), Gandalph_11 (F1), Geralt_11 (F1), GigiOuiOui_11 (F1),
 Girafales_12 (F1), Girr_11 (F1), Gorge_11 (F1), Guppsters_11 (F1), HC_13 (I1),
 Hades_11 (F1), Hamulus_11 (F1), Harley_11 (F1), Hegedechwinu_12 (F1),
 Hlubikazi_11 (F1), IbOuu_11 (F1), Ibhubesi_11 (F1), Idergollasper_47 (O),
 IrishSherpFalk_11 (F1), Island3_13 (I1), JalFarm20_12 (F1), James_11 (F1),
 JangDynasty_47 (O), Jarcob_11 (F1), Jinglebell_11 (F1), Job42_12 (F1), JoeyJr_11
 (F1), Juice456_12 (F1), Juniper1_11 (F1), Karhdo_11 (F1), Kenuha5_11 (F1),
 Kersh_11 (F1), Kimberlium_12 (F1), KingMidas_11 (F1), Kingsley_12 (F1), Koella_11
 (F1), Krakatau_12 (F1), Krili_46 (O), KristaRAM_12 (F1), LastJedi_11 (F1),
 Latretium_11 (F1), Leozinho_12 (F1), Leperchaun_11 (F1), LilMoolah_11 (F1),
 LittleShirley_12 (F1), Lizziana_11 (F1), Llama_11 (F1), Llij_11 (F1), Lorde_12 (F1),
 LunaBlu_11 (F1), LunaStella_12 (F4), MadKillah_48 (O), MadMen_11 (F1),
 Madiba_12 (F1), Mahavrat_11 (F1), Mandlovu_11 (F1), Mantra_11 (F1),
 Maravista_11 (F1), Marker_12 (F1), Martik_11 (F1), Mattes_11 (F1),
 Melissauren88_11 (F1), MilanaBonita_12 (F1), MilleniumForce_12 (F1),
 MinionDave_12 (F1), Minnie_11 (F1), Misha28_12 (F1), MisterCuddles_11 (F1),
 Modragons_11 (F1), MooMoo_11 (singleton), Moonbeam_11 (F1), Mori_46 (O),
 Mova_12 (F1), Mozy_12 (F1), Ms6_11 (F1), MulchSalad_11 (F), Murai_47 (O),
 Mutaforma13_11 (F1), NiebruSaylor_46 (O), Nimbo_11 (F1), Nitzel_12 (F1),
 Nivrat_11 (F1), NormanBulbieJr_11 (F1), Ochi17_11 (F1), OfUltron_11 (F1),
 Oksu_12 (F1), OldBen_11 (F1), OlympiaSaint_11 (F1), Ovechkin_11 (F1),
 OwlsT2W_12 (F1), PHappiness_11 (F1), PMC_11 (F1), Phalconet_11 (F1),
 Phanphagia_11 (F1), Phasih_11 (F1), Phatniss_11 (F1), PhesterPhotato_11 (F1),
 Philus_11 (F1), Piper2020_12 (F1), Pippy_11 (F1), Plumbus_12 (F1), Poenanya_11
 (F1), Polka14_11 (F1), Pollywog_12 (F1), PopTart_11 (F1), Priscilla_11 (F1),
 QueenHazel_13 (I1), QuickMath_11 (F1), Quico_12 (F1), Radiance_11 (F1),
 Ramsey_12 (F1), RedBird_11 (F1), Renaud18_12 (F4), Rialto_12 (F1), Rita_11 (F1),
 Rockne_11 (F1), RockyHorror_12 (F1), Royals2015_11 (F1), Ryadel_51 (O),
 Saal_11 (F1), Sabbb_11 (F1), Sandalphon_11 (F1), Sarma624_12 (F1),
 Sassafras_11 (F1), SassyB_11 (F1), Sbash_12 (I2), SchoolBus_47 (O), Schuy_45
 (O), Scottish_11 (F1), Seabastian_11 (F1), Seagreen_12 (F1), Shauna1_11 (F1),
 Shida_47 (O), ShowerHandel_12 (F1), ShroomBoi_11 (F1), SiSi_11 (F1),
 SimranZ1_12 (F1), Smooch_49 (O), Sparkdehlily_11 (F1), Spartacus_11 (F1),
 Spikelee_12 (F1), Spoonbill_11 (F1), Squirty_12 (F3), StAnnes_11 (F1), Stap_12
 (F1), Strokeseat_11 (F1), SuperGrey_11 (F1), SwagPiggett_11 (F1), TChen_12 (F4),
 TDanisky_11 (F1), Taj_11 (F1), TelAviv_44 (O), ThetaBob_12 (F4), TootsiePop_12
 (F1), Tootsieroll_12 (F1), Totinger_12 (F1), Tweety_11 (F1), VRedHorse_11 (F1),
 Velveteen_12 (F1), Veteran_11 (F1), Vorrps_46 (O), Wachhund_11 (F1), Wee_11
 (F1), Whatsapiecost_11 (F1), Whouxphf_11 (F1), Wildflower_45 (O), WillSterrel_11
 (F1), Winget_48 (O), XFactor_11 (F1), Xula_12 (I1), Yorick_11 (F1), YungJamal_50
 (O), Zakhe101_47 (O), Zerg_11 (F1), Zizzle_11 (F1),

Summary by clusters:

There are 9 clusters represented in this pham: F1, singleton, F3, F4, F5, F, I1, I2, O,

Info for manual annotations of cluster F1:

- Start number 8 was manually annotated 3 times for cluster F1.
- Start number 9 was manually annotated 9 times for cluster F1.

- Start number 10 was manually annotated 1 time for cluster F1.
- Start number 13 was manually annotated 2 times for cluster F1.
- Start number 17 was manually annotated 187 times for cluster F1.

Info for manual annotations of cluster F3:

- Start number 17 was manually annotated 1 time for cluster F3.

Info for manual annotations of cluster F4:

- Start number 17 was manually annotated 3 times for cluster F4.

Info for manual annotations of cluster F5:

- Start number 7 was manually annotated 1 time for cluster F5.

Info for manual annotations of cluster I1:

- Start number 14 was manually annotated 1 time for cluster I1.
- Start number 17 was manually annotated 5 times for cluster I1.

Info for manual annotations of cluster I2:

- Start number 17 was manually annotated 2 times for cluster I2.

Info for manual annotations of cluster O:

- Start number 17 was manually annotated 22 times for cluster O.

Gene Information:

Gene: Akhila_12 Start: 8280, Stop: 9089, Start Num: 17

Candidate Starts for Akhila_12:

(Start: 17 @8280 has 221 MA's), (18, 8292), (19, 8361), (20, 8370), (21, 8406), (22, 8430), (23, 8436), (26, 8499), (30, 8598), (32, 8613), (33, 8616), (34, 8619), (36, 8649), (38, 8670), (39, 8679), (47, 8733), (58, 8895), (62, 8967), (64, 8988), (70, 9039), (71, 9045),

Gene: Alexphander_12 Start: 7463, Stop: 8272, Start Num: 17

Candidate Starts for Alexphander_12:

(Start: 17 @7463 has 221 MA's), (18, 7475), (20, 7553), (21, 7589), (22, 7613), (23, 7619), (26, 7682), (32, 7796), (33, 7799), (34, 7802), (36, 7832), (38, 7853), (39, 7862), (47, 7916), (49, 7943), (58, 8078), (62, 8150), (63, 8153), (64, 8171), (70, 8222), (71, 8228),

Gene: Alkhayr_45 Start: 23768, Stop: 24583, Start Num: 17

Candidate Starts for Alkhayr_45:

(Start: 17 @23768 has 221 MA's), (19, 23849), (26, 23990), (28, 24005), (32, 24104), (35, 24122), (41, 24185), (43, 24197), (45, 24212), (56, 24329), (61, 24455),

Gene: AlpineSix_11 Start: 7607, Stop: 8416, Start Num: 17

Candidate Starts for AlpineSix_11:

(Start: 13 @7550 has 2 MA's), (Start: 17 @7607 has 221 MA's), (18, 7619), (20, 7697), (21, 7733), (22, 7757), (23, 7763), (26, 7826), (31, 7937), (32, 7940), (33, 7943), (34, 7946), (36, 7976), (38, 7997), (39, 8006), (46, 8054), (47, 8060), (48, 8084), (58, 8222), (62, 8294), (64, 8315), (70, 8366), (71, 8372),

Gene: ArcusAngelus_11 Start: 7620, Stop: 8429, Start Num: 17

Candidate Starts for ArcusAngelus_11:

(Start: 17 @7620 has 221 MA's), (18, 7632), (19, 7701), (20, 7710), (21, 7746), (22, 7770), (23, 7776), (26, 7839), (32, 7953), (33, 7956), (36, 7989), (38, 8010), (39, 8019), (47, 8073), (49, 8100), (55, 8175), (62, 8307), (64, 8328), (70, 8379), (71, 8385),

Gene: Ardmore_11 Start: 7631, Stop: 8440, Start Num: 17

Candidate Starts for Ardmore_11:

(Start: 10 @7559 has 1 MA's), (Start: 17 @7631 has 221 MA's), (18, 7643), (19, 7712), (20, 7721), (21, 7757), (22, 7781), (23, 7787), (26, 7850), (31, 7961), (32, 7964), (33, 7967), (34, 7970), (36, 8000), (38, 8021), (39, 8030), (47, 8084), (58, 8246), (62, 8318), (64, 8339), (70, 8390), (71, 8396),

Gene: Ashwin_46 Start: 23766, Stop: 24581, Start Num: 17

Candidate Starts for Ashwin_46:

(Start: 17 @23766 has 221 MA's), (19, 23847), (26, 23988), (28, 24003), (32, 24102), (35, 24120), (41, 24183), (43, 24195), (45, 24210), (56, 24327), (61, 24453),

Gene: Aubs_11 Start: 7628, Stop: 8437, Start Num: 17

Candidate Starts for Aubs_11:

(Start: 10 @7559 has 1 MA's), (Start: 17 @7628 has 221 MA's), (18, 7640), (19, 7709), (20, 7718), (21, 7754), (22, 7778), (23, 7784), (26, 7847), (32, 7961), (33, 7964), (36, 7997), (38, 8018), (39, 8027), (47, 8081), (49, 8108), (55, 8183), (62, 8315), (64, 8336), (70, 8387), (71, 8393),

Gene: Awesomesauce_12 Start: 7464, Stop: 8273, Start Num: 17

Candidate Starts for Awesomesauce_12:

(Start: 9 @7392 has 9 MA's), (12, 7407), (Start: 17 @7464 has 221 MA's), (18, 7476), (20, 7554), (21, 7590), (22, 7614), (23, 7620), (26, 7683), (32, 7797), (33, 7800), (34, 7803), (36, 7833), (38, 7854), (39, 7863), (46, 7911), (47, 7917), (49, 7944), (58, 8079), (62, 8151), (64, 8172), (70, 8223), (71, 8229),

Gene: Babsiella_13 Start: 8812, Stop: 9663, Start Num: 14

Candidate Starts for Babsiella_13:

(Start: 14 @8812 has 1 MA's), (Start: 17 @8863 has 221 MA's), (20, 8959), (23, 9022), (28, 9100), (32, 9199), (36, 9235), (59, 9511), (64, 9571), (65, 9577),

Gene: Batiatus_11 Start: 7631, Stop: 8440, Start Num: 17

Candidate Starts for Batiatus_11:

(Start: 10 @7559 has 1 MA's), (Start: 17 @7631 has 221 MA's), (18, 7643), (19, 7712), (20, 7721), (21, 7757), (22, 7781), (23, 7787), (26, 7850), (31, 7961), (32, 7964), (33, 7967), (34, 7970), (36, 8000), (38, 8021), (39, 8030), (47, 8084), (58, 8246), (62, 8318), (64, 8339), (70, 8390), (71, 8396),

Gene: Beakin_12 Start: 7465, Stop: 8274, Start Num: 17

Candidate Starts for Beakin_12:

(Start: 13 @7408 has 2 MA's), (Start: 17 @7465 has 221 MA's), (18, 7477), (20, 7555), (21, 7591), (22, 7615), (23, 7621), (26, 7684), (32, 7798), (33, 7801), (34, 7804), (36, 7834), (38, 7855), (39, 7864), (46, 7912), (47, 7918), (49, 7945), (58, 8080), (62, 8152), (64, 8173), (70, 8224), (71, 8230),

Gene: BigPhil_12 Start: 7460, Stop: 8269, Start Num: 17

Candidate Starts for BigPhil_12:

(Start: 13 @7403 has 2 MA's), (Start: 17 @7460 has 221 MA's), (18, 7472), (21, 7586), (22, 7610), (23, 7616), (26, 7679), (32, 7793), (33, 7796), (34, 7799), (36, 7829), (38, 7850), (39, 7859), (47, 7913), (58, 8075), (64, 8168), (70, 8219), (71, 8225),

Gene: Bipolar_11 Start: 7599, Stop: 8408, Start Num: 17

Candidate Starts for Bipolar_11:

(Start: 17 @7599 has 221 MA's), (18, 7611), (19, 7680), (21, 7725), (22, 7749), (23, 7755), (26, 7818), (31, 7929), (32, 7932), (33, 7935), (34, 7938), (36, 7968), (38, 7989), (39, 7998), (47, 8052), (49, 8079), (50, 8085), (58, 8214), (62, 8286), (64, 8307), (70, 8358), (71, 8364),

Gene: Blessica_48 Start: 24169, Stop: 24984, Start Num: 17

Candidate Starts for Blessica_48:

(Start: 17 @24169 has 221 MA's), (19, 24250), (26, 24391), (28, 24406), (32, 24505), (35, 24523), (41, 24586), (43, 24598), (45, 24613), (56, 24730), (61, 24856),

Gene: Blexus_11 Start: 7553, Stop: 8434, Start Num: 9

Candidate Starts for Blexus_11:

(Start: 9 @7553 has 9 MA's), (12, 7568), (Start: 17 @7625 has 221 MA's), (18, 7637), (21, 7751), (22, 7775), (23, 7781), (26, 7844), (32, 7958), (33, 7961), (34, 7964), (36, 7994), (38, 8015), (39, 8024), (47, 8078), (49, 8105), (58, 8240), (64, 8333), (70, 8384), (71, 8390),

Gene: BlueCrab_11 Start: 7609, Stop: 8418, Start Num: 17

Candidate Starts for BlueCrab_11:

(Start: 9 @7537 has 9 MA's), (12, 7552), (Start: 17 @7609 has 221 MA's), (18, 7621), (21, 7735), (22, 7759), (23, 7765), (26, 7828), (32, 7942), (33, 7945), (34, 7948), (36, 7978), (38, 7999), (39, 8008), (46, 8056), (47, 8062), (49, 8089), (58, 8224), (62, 8296), (63, 8299), (64, 8317), (70, 8368), (71, 8374),

Gene: BobaPhett_11 Start: 7601, Stop: 8410, Start Num: 17

Candidate Starts for BobaPhett_11:

(Start: 13 @7544 has 2 MA's), (Start: 17 @7601 has 221 MA's), (18, 7613), (20, 7691), (21, 7727), (22, 7751), (23, 7757), (26, 7820), (32, 7934), (33, 7937), (34, 7940), (36, 7970), (38, 7991), (39, 8000), (46, 8048), (47, 8054), (48, 8078), (58, 8216), (62, 8288), (64, 8309), (69, 8342), (70, 8360), (71, 8366),

Gene: Bobi_12 Start: 7460, Stop: 8269, Start Num: 17

Candidate Starts for Bobi_12:

(12, 7403), (Start: 17 @7460 has 221 MA's), (18, 7472), (20, 7550), (21, 7586), (22, 7610), (23, 7616), (26, 7679), (32, 7793), (33, 7796), (34, 7799), (36, 7829), (38, 7850), (39, 7859), (47, 7913), (58, 8075), (62, 8147), (64, 8168), (70, 8219), (71, 8225),

Gene: BodEinwohner17_11 Start: 7609, Stop: 8418, Start Num: 17

Candidate Starts for BodEinwohner17_11:

(Start: 9 @7537 has 9 MA's), (12, 7552), (Start: 17 @7609 has 221 MA's), (18, 7621), (21, 7735), (22, 7759), (23, 7765), (26, 7828), (32, 7942), (33, 7945), (34, 7948), (36, 7978), (38, 7999), (39, 8008), (46, 8056), (47, 8062), (49, 8089), (58, 8224), (62, 8296), (63, 8299), (64, 8317), (70, 8368), (71, 8374),

Gene: Boomer_12 Start: 7386, Stop: 8270, Start Num: 8

Candidate Starts for Boomer_12:

(Start: 8 @7386 has 3 MA's), (Start: 9 @7389 has 9 MA's), (12, 7404), (Start: 17 @7461 has 221 MA's), (18, 7473), (20, 7551), (21, 7587), (22, 7611), (23, 7617), (26, 7680), (32, 7794), (33, 7797), (34, 7800), (36, 7830), (38, 7851), (39, 7860), (46, 7908), (47, 7914), (49, 7941), (58, 8076), (62, 8148), (64, 8169), (70, 8220), (71, 8226),

Gene: Bora_44 Start: 23219, Stop: 24034, Start Num: 17

Candidate Starts for Bora_44:

(Start: 17 @23219 has 221 MA's), (19, 23300), (26, 23441), (28, 23456), (32, 23555), (35, 23573), (41, 23636), (43, 23648), (45, 23663), (56, 23780), (61, 23906),

Gene: Brocalys_11 Start: 7598, Stop: 8407, Start Num: 17

Candidate Starts for Brocalys_11:

(Start: 17 @7598 has 221 MA's), (18, 7610), (20, 7688), (21, 7724), (22, 7748), (23, 7754), (26, 7817), (32, 7931), (33, 7934), (34, 7937), (36, 7967), (38, 7988), (39, 7997), (47, 8051), (58, 8213), (64, 8306), (70, 8357), (71, 8363),

Gene: Brujita_13 Start: 8865, Stop: 9665, Start Num: 17

Candidate Starts for Brujita_13:

(15, 8820), (Start: 17 @8865 has 221 MA's), (20, 8961), (23, 9024), (28, 9102), (32, 9201), (36, 9237), (59, 9513), (64, 9573), (65, 9579),

Gene: Bubbles123_11 Start: 7629, Stop: 8438, Start Num: 17

Candidate Starts for Bubbles123_11:

(Start: 13 @7572 has 2 MA's), (Start: 17 @7629 has 221 MA's), (18, 7641), (20, 7719), (21, 7755), (22, 7779), (23, 7785), (26, 7848), (31, 7959), (32, 7962), (33, 7965), (34, 7968), (36, 7998), (38, 8019), (39, 8028), (46, 8076), (47, 8082), (49, 8109), (54, 8178), (58, 8244), (62, 8316), (64, 8337), (70, 8388), (71, 8394),

Gene: Burwell21_11 Start: 7608, Stop: 8417, Start Num: 17

Candidate Starts for Burwell21_11:

(Start: 9 @7536 has 9 MA's), (12, 7551), (Start: 17 @7608 has 221 MA's), (18, 7620), (20, 7698), (21, 7734), (22, 7758), (23, 7764), (26, 7827), (32, 7941), (33, 7944), (34, 7947), (36, 7977), (38, 7998), (39, 8007), (46, 8055), (47, 8061), (48, 8085), (58, 8223), (62, 8295), (64, 8316), (69, 8349), (70, 8367), (71, 8373),

Gene: BuzzLyseyear_12 Start: 7459, Stop: 8268, Start Num: 17

Candidate Starts for BuzzLyseyear_12:

(12, 7402), (Start: 17 @7459 has 221 MA's), (18, 7471), (20, 7549), (21, 7585), (22, 7609), (23, 7615), (26, 7678), (32, 7792), (33, 7795), (34, 7798), (36, 7828), (38, 7849), (39, 7858), (47, 7912), (58, 8074), (62, 8146), (64, 8167), (70, 8218), (71, 8224),

Gene: ByChance_11 Start: 7611, Stop: 8420, Start Num: 17

Candidate Starts for ByChance_11:

(Start: 17 @7611 has 221 MA's), (18, 7623), (20, 7701), (21, 7737), (22, 7761), (23, 7767), (26, 7830), (32, 7944), (33, 7947), (34, 7950), (36, 7980), (38, 8001), (39, 8010), (47, 8064), (49, 8091), (58, 8226), (62, 8298), (64, 8319), (69, 8352), (70, 8370), (71, 8376),

Gene: Byougenkin_11 Start: 7602, Stop: 8411, Start Num: 17

Candidate Starts for Byougenkin_11:

(Start: 17 @7602 has 221 MA's), (18, 7614), (20, 7692), (21, 7728), (22, 7752), (23, 7758), (26, 7821), (31, 7932), (32, 7935), (33, 7938), (34, 7941), (36, 7971), (38, 7992), (39, 8001), (47, 8055), (62, 8289), (64, 8310), (70, 8361), (71, 8367),

Gene: Cabrinians_11 Start: 7601, Stop: 8410, Start Num: 17

Candidate Starts for Cabrinians_11:

(Start: 17 @7601 has 221 MA's), (18, 7613), (20, 7691), (21, 7727), (22, 7751), (23, 7757), (26, 7820), (32, 7934), (33, 7937), (34, 7940), (36, 7970), (38, 7991), (39, 8000), (47, 8054), (49, 8081), (58, 8216), (62, 8288), (64, 8309), (69, 8342), (70, 8360), (71, 8366),

Gene: CaptainTrips_12 Start: 8279, Stop: 9088, Start Num: 17

Candidate Starts for CaptainTrips_12:

(Start: 10 @8207 has 1 MA's), (Start: 17 @8279 has 221 MA's), (18, 8291), (19, 8360), (20, 8369), (21, 8405), (22, 8429), (23, 8435), (26, 8498), (31, 8609), (32, 8612), (33, 8615), (36, 8648), (38, 8669), (39, 8678), (47, 8732), (58, 8894), (62, 8966), (64, 8987), (70, 9038), (71, 9044),

Gene: Catdawg_47 Start: 23858, Stop: 24673, Start Num: 17

Candidate Starts for Catdawg_47:

(Start: 17 @23858 has 221 MA's), (19, 23939), (26, 24080), (28, 24095), (32, 24194), (35, 24212), (41, 24275), (43, 24287), (45, 24302), (56, 24419), (61, 24545),

Gene: Cerasum_12 Start: 7460, Stop: 8269, Start Num: 17

Candidate Starts for Cerasum_12:

(Start: 13 @7403 has 2 MA's), (Start: 17 @7460 has 221 MA's), (18, 7472), (21, 7586), (22, 7610), (23, 7616), (26, 7679), (32, 7793), (33, 7796), (34, 7799), (36, 7829), (38, 7850), (39, 7859), (47, 7913), (58, 8075), (64, 8168), (70, 8219), (71, 8225),

Gene: Che8_11 Start: 7613, Stop: 8422, Start Num: 17

Candidate Starts for Che8_11:

(Start: 13 @7556 has 2 MA's), (Start: 17 @7613 has 221 MA's), (18, 7625), (20, 7703), (21, 7739), (22, 7763), (23, 7769), (26, 7832), (32, 7946), (33, 7949), (34, 7952), (36, 7982), (38, 8003), (39, 8012), (47, 8066), (49, 8093), (54, 8162), (58, 8228), (62, 8300), (64, 8321), (70, 8372), (71, 8378),

Gene: Che9c_12 Start: 8479, Stop: 9276, Start Num: 17

Candidate Starts for Che9c_12:

(Start: 14 @8431 has 1 MA's), (Start: 17 @8479 has 221 MA's), (20, 8575), (27, 8710), (32, 8815), (49, 8962), (57, 9076), (64, 9184), (65, 9190),

Gene: Chevrolet_10 Start: 7620, Stop: 8429, Start Num: 17

Candidate Starts for Chevrolet_10:

(Start: 17 @7620 has 221 MA's), (18, 7632), (19, 7701), (20, 7710), (21, 7746), (22, 7770), (23, 7776), (26, 7839), (32, 7953), (33, 7956), (36, 7989), (38, 8010), (39, 8019), (47, 8073), (49, 8100), (55, 8175), (62, 8307), (64, 8328), (70, 8379), (71, 8385),

Gene: ChickenDinner_12 Start: 7464, Stop: 8273, Start Num: 17

Candidate Starts for ChickenDinner_12:

(Start: 9 @7392 has 9 MA's), (12, 7407), (Start: 17 @7464 has 221 MA's), (18, 7476), (20, 7554), (21, 7590), (22, 7614), (23, 7620), (26, 7683), (32, 7797), (33, 7800), (34, 7803), (36, 7833), (38, 7854), (39, 7863), (47, 7917), (49, 7944), (58, 8079), (62, 8151), (64, 8172), (70, 8223), (71, 8229),

Gene: Chuckly_11 Start: 7631, Stop: 8440, Start Num: 17

Candidate Starts for Chuckly_11:

(Start: 17 @7631 has 221 MA's), (18, 7643), (19, 7712), (20, 7721), (21, 7757), (22, 7781), (23, 7787), (26, 7850), (31, 7961), (32, 7964), (33, 7967), (34, 7970), (36, 8000), (38, 8021), (39, 8030), (47, 8084), (58, 8246), (62, 8318), (64, 8339), (69, 8372), (70, 8390), (71, 8396),

Gene: Clifton_11 Start: 7597, Stop: 8406, Start Num: 17

Candidate Starts for Clifton_11:

(Start: 17 @7597 has 221 MA's), (18, 7609), (20, 7687), (21, 7723), (22, 7747), (23, 7753), (26, 7816), (32, 7930), (33, 7933), (34, 7936), (36, 7966), (38, 7987), (39, 7996), (47, 8050), (49, 8077), (58, 8212), (64, 8305), (70, 8356), (71, 8362),

Gene: Coco12_12 Start: 7462, Stop: 8271, Start Num: 17

Candidate Starts for Coco12_12:

(Start: 17 @7462 has 221 MA's), (18, 7474), (20, 7552), (21, 7588), (22, 7612), (23, 7618), (26, 7681), (32, 7795), (33, 7798), (34, 7801), (36, 7831), (38, 7852), (39, 7861), (46, 7909), (47, 7915), (58, 8077), (62, 8149), (64, 8170), (70, 8221), (71, 8227),

Gene: Corndog_49 Start: 24316, Stop: 25131, Start Num: 17

Candidate Starts for Corndog_49:

(Start: 17 @24316 has 221 MA's), (19, 24397), (26, 24538), (28, 24553), (32, 24652), (35, 24670), (41, 24733), (43, 24745), (45, 24760), (56, 24877), (61, 25003),

Gene: Cornie_12 Start: 7811, Stop: 8707, Start Num: 7

Candidate Starts for Cornie_12:

(Start: 7 @7811 has 1 MA's), (Start: 17 @7898 has 221 MA's), (21, 8024), (23, 8054), (24, 8087), (25, 8099), (27, 8126), (32, 8231), (42, 8321), (58, 8513), (62, 8585), (64, 8606),

Gene: Cornucopia_12 Start: 7481, Stop: 8290, Start Num: 17

Candidate Starts for Cornucopia_12:

(Start: 17 @7481 has 221 MA's), (18, 7493), (19, 7562), (20, 7571), (21, 7607), (22, 7631), (23, 7637), (26, 7700), (31, 7811), (32, 7814), (33, 7817), (34, 7820), (36, 7850), (38, 7871), (39, 7880), (46, 7928), (47, 7934), (49, 7961), (54, 8030), (58, 8096), (62, 8168), (64, 8189), (70, 8240), (71, 8246),

Gene: Crumble_11 Start: 7611, Stop: 8420, Start Num: 17

Candidate Starts for Crumble_11:

(Start: 17 @7611 has 221 MA's), (18, 7623), (20, 7701), (21, 7737), (22, 7761), (23, 7767), (26, 7830), (32, 7944), (33, 7947), (34, 7950), (36, 7980), (38, 8001), (39, 8010), (47, 8064), (49, 8091), (62, 8298), (64, 8319), (70, 8370), (71, 8376),

Gene: DLane_11 Start: 7630, Stop: 8439, Start Num: 17

Candidate Starts for DLane_11:

(1, 7432), (2, 7453), (3, 7456), (16, 7591), (Start: 17 @7630 has 221 MA's), (18, 7642), (19, 7711), (20, 7720), (21, 7756), (22, 7780), (23, 7786), (26, 7849), (30, 7948), (32, 7963), (33, 7966), (36, 7999), (38, 8020), (39, 8029), (47, 8083), (58, 8245), (62, 8317), (64, 8338), (70, 8389), (71, 8395),

Gene: DRBy19_11 Start: 7624, Stop: 8433, Start Num: 17

Candidate Starts for DRBy19_11:

(Start: 9 @7552 has 9 MA's), (12, 7567), (Start: 17 @7624 has 221 MA's), (18, 7636), (20, 7714), (21, 7750), (22, 7774), (23, 7780), (26, 7843), (32, 7957), (33, 7960), (34, 7963), (36, 7993), (38, 8014), (39, 8023), (47, 8077), (49, 8104), (58, 8239), (62, 8311), (64, 8332), (70, 8383), (71, 8389),

Gene: DaWorst_12 Start: 7463, Stop: 8272, Start Num: 17

Candidate Starts for DaWorst_12:

(12, 7406), (Start: 17 @7463 has 221 MA's), (18, 7475), (21, 7589), (22, 7613), (23, 7619), (26, 7682), (32, 7796), (33, 7799), (34, 7802), (36, 7832), (38, 7853), (39, 7862), (47, 7916), (58, 8078), (62, 8150), (64, 8171), (70, 8222), (71, 8228),

Gene: DaddyRickover_11 Start: 7609, Stop: 8418, Start Num: 17

Candidate Starts for DaddyRickover_11:

(Start: 9 @7537 has 9 MA's), (12, 7552), (Start: 17 @7609 has 221 MA's), (18, 7621), (21, 7735), (22, 7759), (23, 7765), (26, 7828), (32, 7942), (33, 7945), (34, 7948), (36, 7978), (38, 7999), (39, 8008), (46, 8056), (47, 8062), (49, 8089), (58, 8224), (62, 8296), (63, 8299), (64, 8317), (70, 8368), (71, 8374),

Gene: Daenerys_11 Start: 7537, Stop: 8418, Start Num: 9

Candidate Starts for Daenerys_11:

(Start: 9 @7537 has 9 MA's), (12, 7552), (Start: 17 @7609 has 221 MA's), (18, 7621), (21, 7735), (22, 7759), (23, 7765), (26, 7828), (32, 7942), (33, 7945), (34, 7948), (36, 7978), (38, 7999), (39, 8008), (46, 8056), (47, 8062), (49, 8089), (58, 8224), (62, 8296), (63, 8299), (64, 8317), (70, 8368), (71, 8374),

Gene: Dante_11 Start: 7626, Stop: 8435, Start Num: 17

Candidate Starts for Dante_11:

(Start: 17 @7626 has 221 MA's), (18, 7638), (20, 7716), (21, 7752), (22, 7776), (23, 7782), (26, 7845), (32, 7959), (33, 7962), (34, 7965), (36, 7995), (38, 8016), (39, 8025), (47, 8079), (49, 8106), (58, 8241), (62, 8313), (63, 8316), (64, 8334), (70, 8385), (71, 8391),

Gene: DeadP_11 Start: 7631, Stop: 8440, Start Num: 17

Candidate Starts for DeadP_11:

(Start: 17 @7631 has 221 MA's), (18, 7643), (19, 7712), (20, 7721), (21, 7757), (22, 7781), (23, 7787), (26, 7850), (31, 7961), (32, 7964), (33, 7967), (34, 7970), (36, 8000), (38, 8021), (39, 8030), (47, 8084), (58, 8246), (62, 8318), (64, 8339), (70, 8390), (71, 8396),

Gene: Deb65_11 Start: 7609, Stop: 8418, Start Num: 17

Candidate Starts for Deb65_11:

(Start: 9 @7537 has 9 MA's), (12, 7552), (Start: 17 @7609 has 221 MA's), (18, 7621), (21, 7735), (22, 7759), (23, 7765), (26, 7828), (32, 7942), (33, 7945), (34, 7948), (36, 7978), (38, 7999), (39, 8008), (46, 8056), (47, 8062), (49, 8089), (58, 8224), (62, 8296), (63, 8299), (64, 8317), (70, 8368), (71, 8374),

Gene: DillTech15_11 Start: 7631, Stop: 8440, Start Num: 17

Candidate Starts for DillTech15_11:

(Start: 10 @7559 has 1 MA's), (Start: 17 @7631 has 221 MA's), (18, 7643), (19, 7712), (20, 7721), (21, 7757), (22, 7781), (23, 7787), (26, 7850), (31, 7961), (32, 7964), (33, 7967), (34, 7970), (36, 8000), (38, 8021), (39, 8030), (47, 8084), (58, 8246), (62, 8318), (64, 8339), (70, 8390), (71, 8396),

Gene: DirtMcgirt_12 Start: 7464, Stop: 8273, Start Num: 17

Candidate Starts for DirtMcgirt_12:

(Start: 9 @7392 has 9 MA's), (12, 7407), (Start: 17 @7464 has 221 MA's), (18, 7476), (19, 7545), (20, 7554), (21, 7590), (22, 7614), (23, 7620), (26, 7683), (31, 7794), (32, 7797), (33, 7800), (34, 7803), (36, 7833), (38, 7854), (39, 7863), (47, 7917), (62, 8151), (64, 8172), (70, 8223), (71, 8229),

Gene: DocMcStuffins_12 Start: 7464, Stop: 8273, Start Num: 17

Candidate Starts for DocMcStuffins_12:

(Start: 9 @7392 has 9 MA's), (12, 7407), (Start: 17 @7464 has 221 MA's), (18, 7476), (20, 7554), (21, 7590), (22, 7614), (23, 7620), (26, 7683), (32, 7797), (33, 7800), (34, 7803), (36, 7833), (38, 7854), (39, 7863), (47, 7917), (49, 7944), (58, 8079), (62, 8151), (64, 8172), (70, 8223), (71, 8229),

Gene: Donkeykong_11 Start: 7627, Stop: 8436, Start Num: 17

Candidate Starts for Donkeykong_11:

(Start: 13 @7570 has 2 MA's), (Start: 17 @7627 has 221 MA's), (18, 7639), (20, 7717), (21, 7753), (22, 7777), (23, 7783), (26, 7846), (32, 7960), (33, 7963), (34, 7966), (36, 7996), (38, 8017), (39, 8026), (46, 8074), (47, 8080), (49, 8107), (58, 8242), (62, 8314), (64, 8335), (69, 8368), (70, 8386), (71, 8392),

Gene: Doomphist_11 Start: 7609, Stop: 8418, Start Num: 17

Candidate Starts for Doomphist_11:

(Start: 9 @7537 has 9 MA's), (12, 7552), (Start: 17 @7609 has 221 MA's), (18, 7621), (21, 7735), (22, 7759), (23, 7765), (26, 7828), (32, 7942), (33, 7945), (34, 7948), (36, 7978), (38, 7999), (39, 8008),

(46, 8056), (47, 8062), (49, 8089), (58, 8224), (62, 8296), (63, 8299), (64, 8317), (70, 8368), (71, 8374),

Gene: Dorothy_11 Start: 7537, Stop: 8418, Start Num: 9

Candidate Starts for Dorothy_11:

(Start: 9 @7537 has 9 MA's), (12, 7552), (Start: 17 @7609 has 221 MA's), (18, 7621), (21, 7735), (22, 7759), (23, 7765), (26, 7828), (32, 7942), (33, 7945), (34, 7948), (36, 7978), (38, 7999), (39, 8008), (46, 8056), (47, 8062), (49, 8089), (58, 8224), (62, 8296), (63, 8299), (64, 8317), (70, 8368), (71, 8374),

Gene: DosHalletts_14 Start: 7461, Stop: 8270, Start Num: 17

Candidate Starts for DosHalletts_14:

(Start: 8 @7386 has 3 MA's), (Start: 9 @7389 has 9 MA's), (12, 7404), (Start: 17 @7461 has 221 MA's), (18, 7473), (20, 7551), (21, 7587), (22, 7611), (23, 7617), (26, 7680), (32, 7794), (33, 7797), (34, 7800), (36, 7830), (38, 7851), (39, 7860), (46, 7908), (47, 7914), (49, 7941), (58, 8076), (62, 8148), (64, 8169), (70, 8220), (71, 8226),

Gene: DotProduct_11 Start: 7632, Stop: 8441, Start Num: 17

Candidate Starts for DotProduct_11:

(Start: 17 @7632 has 221 MA's), (18, 7644), (19, 7713), (20, 7722), (21, 7758), (22, 7782), (23, 7788), (26, 7851), (31, 7962), (32, 7965), (33, 7968), (34, 7971), (36, 8001), (38, 8022), (39, 8031), (47, 8085), (62, 8319), (64, 8340), (70, 8391), (71, 8397),

Gene: Doug_11 Start: 7611, Stop: 8420, Start Num: 17

Candidate Starts for Doug_11:

(Start: 8 @7536 has 3 MA's), (Start: 9 @7539 has 9 MA's), (12, 7554), (Start: 17 @7611 has 221 MA's), (18, 7623), (21, 7737), (22, 7761), (23, 7767), (26, 7830), (32, 7944), (33, 7947), (34, 7950), (36, 7980), (38, 8001), (39, 8010), (46, 8058), (47, 8064), (49, 8091), (58, 8226), (62, 8298), (64, 8319), (69, 8352), (70, 8370), (71, 8376),

Gene: Drago_12 Start: 7390, Stop: 8271, Start Num: 9

Candidate Starts for Drago_12:

(Start: 9 @7390 has 9 MA's), (12, 7405), (Start: 17 @7462 has 221 MA's), (18, 7474), (19, 7543), (20, 7552), (21, 7588), (22, 7612), (23, 7618), (26, 7681), (31, 7792), (32, 7795), (33, 7798), (34, 7801), (36, 7831), (38, 7852), (39, 7861), (47, 7915), (62, 8149), (64, 8170), (70, 8221), (71, 8227),

Gene: Dylan_46 Start: 23571, Stop: 24386, Start Num: 17

Candidate Starts for Dylan_46:

(Start: 17 @23571 has 221 MA's), (19, 23652), (26, 23793), (28, 23808), (32, 23907), (35, 23925), (41, 23988), (43, 24000), (45, 24015), (56, 24132), (61, 24258),

Gene: Eish_11 Start: 7600, Stop: 8409, Start Num: 17

Candidate Starts for Eish_11:

(Start: 13 @7543 has 2 MA's), (Start: 17 @7600 has 221 MA's), (18, 7612), (21, 7726), (22, 7750), (23, 7756), (26, 7819), (31, 7930), (32, 7933), (33, 7936), (34, 7939), (36, 7969), (38, 7990), (39, 7999), (46, 8047), (47, 8053), (58, 8215), (62, 8287), (64, 8308), (70, 8359), (71, 8365),

Gene: EleanorGeorge_11 Start: 7633, Stop: 8442, Start Num: 17

Candidate Starts for EleanorGeorge_11:

(Start: 17 @7633 has 221 MA's), (18, 7645), (19, 7714), (20, 7723), (21, 7759), (22, 7783), (23, 7789), (26, 7852), (32, 7966), (33, 7969), (36, 8002), (38, 8023), (39, 8032), (47, 8086), (58, 8248), (62, 8320), (64, 8341), (70, 8392), (71, 8398),

Gene: Emma_11 Start: 7630, Stop: 8439, Start Num: 17

Candidate Starts for Emma_11:

(11, 7570), (Start: 17 @7630 has 221 MA's), (18, 7642), (19, 7711), (20, 7720), (21, 7756), (22, 7780), (23, 7786), (26, 7849), (31, 7960), (32, 7963), (33, 7966), (34, 7969), (36, 7999), (38, 8020), (39, 8029), (47, 8083), (58, 8245), (62, 8317), (64, 8338), (70, 8389), (71, 8395),

Gene: Empress_11 Start: 7533, Stop: 8417, Start Num: 8

Candidate Starts for Empress_11:

(Start: 8 @7533 has 3 MA's), (Start: 9 @7536 has 9 MA's), (12, 7551), (Start: 17 @7608 has 221 MA's), (18, 7620), (20, 7698), (21, 7734), (22, 7758), (23, 7764), (26, 7827), (31, 7938), (32, 7941), (33, 7944), (34, 7947), (36, 7977), (38, 7998), (39, 8007), (47, 8061), (62, 8295), (64, 8316), (70, 8367), (71, 8373),

Gene: Enby_12 Start: 7462, Stop: 8271, Start Num: 17

Candidate Starts for Enby_12:

(Start: 9 @7390 has 9 MA's), (12, 7405), (Start: 17 @7462 has 221 MA's), (18, 7474), (19, 7543), (20, 7552), (21, 7588), (22, 7612), (23, 7618), (26, 7681), (31, 7792), (32, 7795), (33, 7798), (34, 7801), (36, 7831), (38, 7852), (39, 7861), (47, 7915), (62, 8149), (64, 8170), (70, 8221), (71, 8227),

Gene: Eradicator_11 Start: 7610, Stop: 8419, Start Num: 17

Candidate Starts for Eradicator_11:

(Start: 17 @7610 has 221 MA's), (18, 7622), (20, 7700), (21, 7736), (22, 7760), (23, 7766), (26, 7829), (32, 7943), (33, 7946), (34, 7949), (36, 7979), (38, 8000), (39, 8009), (47, 8063), (49, 8090), (58, 8225), (64, 8318), (70, 8369), (71, 8375),

Gene: Estave1_11 Start: 7612, Stop: 8421, Start Num: 17

Candidate Starts for Estave1_11:

(Start: 13 @7555 has 2 MA's), (Start: 17 @7612 has 221 MA's), (18, 7624), (20, 7702), (21, 7738), (22, 7762), (23, 7768), (26, 7831), (32, 7945), (33, 7948), (34, 7951), (36, 7981), (38, 8002), (39, 8011), (46, 8059), (47, 8065), (49, 8092), (58, 8227), (62, 8299), (64, 8320), (70, 8371), (71, 8377),

Gene: Familton_48 Start: 23862, Stop: 24677, Start Num: 17

Candidate Starts for Familton_48:

(Start: 17 @23862 has 221 MA's), (19, 23943), (26, 24084), (28, 24099), (32, 24198), (35, 24216), (41, 24279), (43, 24291), (45, 24306), (56, 24423), (61, 24549),

Gene: Fancypants_11 Start: 7611, Stop: 8420, Start Num: 17

Candidate Starts for Fancypants_11:

(Start: 17 @7611 has 221 MA's), (18, 7623), (21, 7737), (22, 7761), (23, 7767), (26, 7830), (32, 7944), (33, 7947), (34, 7950), (36, 7980), (38, 8001), (39, 8010), (47, 8064), (58, 8226), (62, 8298), (64, 8319), (69, 8352), (70, 8370), (71, 8376),

Gene: Filuzino_11 Start: 7632, Stop: 8441, Start Num: 17

Candidate Starts for Filuzino_11:

(Start: 10 @7560 has 1 MA's), (Start: 17 @7632 has 221 MA's), (18, 7644), (19, 7713), (20, 7722), (21, 7758), (22, 7782), (23, 7788), (26, 7851), (30, 7950), (32, 7965), (33, 7968), (36, 8001), (38, 8022), (39, 8031), (47, 8085), (58, 8247), (62, 8319), (64, 8340), (70, 8391), (71, 8397),

Gene: Firecracker_47 Start: 23469, Stop: 24284, Start Num: 17

Candidate Starts for Firecracker_47:

(Start: 17 @23469 has 221 MA's), (19, 23550), (26, 23691), (28, 23706), (32, 23805), (35, 23823), (41, 23886), (43, 23898), (45, 23913), (56, 24030), (61, 24156),

Gene: Firehouse51_11 Start: 7629, Stop: 8438, Start Num: 17

Candidate Starts for Firehouse51_11:

(1, 7431), (2, 7452), (3, 7455), (16, 7590), (Start: 17 @7629 has 221 MA's), (18, 7641), (19, 7710), (20, 7719), (21, 7755), (22, 7779), (23, 7785), (26, 7848), (31, 7959), (32, 7962), (33, 7965), (36, 7998), (38, 8019), (39, 8028), (47, 8082), (58, 8244), (62, 8316), (64, 8337), (70, 8388), (71, 8394),

Gene: Flathead_12 Start: 7463, Stop: 8272, Start Num: 17

Candidate Starts for Flathead_12:

(Start: 13 @7406 has 2 MA's), (Start: 17 @7463 has 221 MA's), (18, 7475), (19, 7544), (20, 7553), (21, 7589), (22, 7613), (23, 7619), (26, 7682), (31, 7793), (32, 7796), (33, 7799), (34, 7802), (36, 7832), (38, 7853), (39, 7862), (47, 7916), (62, 8150), (64, 8171), (70, 8222), (71, 8228),

Gene: Florinda_11 Start: 7631, Stop: 8440, Start Num: 17

Candidate Starts for Florinda_11:

(Start: 13 @7574 has 2 MA's), (Start: 17 @7631 has 221 MA's), (18, 7643), (20, 7721), (21, 7757), (22, 7781), (23, 7787), (26, 7850), (31, 7961), (32, 7964), (33, 7967), (34, 7970), (36, 8000), (38, 8021), (39, 8030), (47, 8084), (58, 8246), (62, 8318), (64, 8339), (69, 8372), (70, 8390), (71, 8396),

Gene: FoulBall_44 Start: 23856, Stop: 24671, Start Num: 17

Candidate Starts for FoulBall_44:

(Start: 17 @23856 has 221 MA's), (19, 23937), (26, 24078), (28, 24093), (32, 24192), (35, 24210), (41, 24273), (43, 24285), (45, 24300), (56, 24417), (61, 24543),

Gene: Frankie_12 Start: 7653, Stop: 8462, Start Num: 17

Candidate Starts for Frankie_12:

(12, 7596), (Start: 17 @7653 has 221 MA's), (18, 7665), (20, 7743), (21, 7779), (22, 7803), (23, 7809), (26, 7872), (32, 7986), (33, 7989), (34, 7992), (36, 8022), (38, 8043), (39, 8052), (46, 8100), (47, 8106), (49, 8133), (58, 8268), (62, 8340), (64, 8361), (70, 8412), (71, 8418),

Gene: FreddyB_11 Start: 7610, Stop: 8419, Start Num: 17

Candidate Starts for FreddyB_11:

(Start: 17 @7610 has 221 MA's), (18, 7622), (20, 7700), (21, 7736), (22, 7760), (23, 7766), (26, 7829), (32, 7943), (33, 7946), (34, 7949), (36, 7979), (38, 8000), (39, 8009), (47, 8063), (49, 8090), (58, 8225), (62, 8297), (64, 8318), (69, 8351), (70, 8369), (71, 8375),

Gene: Fruitloop_11 Start: 7632, Stop: 8441, Start Num: 17

Candidate Starts for Fruitloop_11:

(Start: 10 @7560 has 1 MA's), (Start: 17 @7632 has 221 MA's), (18, 7644), (19, 7713), (20, 7722), (21, 7758), (22, 7782), (23, 7788), (26, 7851), (31, 7962), (32, 7965), (33, 7968), (36, 8001), (38, 8022), (39, 8031), (47, 8085), (58, 8247), (62, 8319), (64, 8340), (70, 8391), (71, 8397),

Gene: GUmbie_11 Start: 7625, Stop: 8434, Start Num: 17

Candidate Starts for GUmbie_11:

(5, 7517), (12, 7568), (Start: 17 @7625 has 221 MA's), (18, 7637), (19, 7706), (21, 7751), (22, 7775), (23, 7781), (26, 7844), (32, 7958), (33, 7961), (34, 7964), (36, 7994), (38, 8015), (39, 8024), (47, 8078), (58, 8240), (62, 8312), (64, 8333), (70, 8384), (71, 8390),

Gene: Galactic_11 Start: 7606, Stop: 8415, Start Num: 17

Candidate Starts for Galactic_11:

(Start: 17 @7606 has 221 MA's), (18, 7618), (19, 7687), (20, 7696), (21, 7732), (22, 7756), (23, 7762), (26, 7825), (31, 7936), (32, 7939), (33, 7942), (34, 7945), (36, 7975), (38, 7996), (39, 8005), (47, 8059), (62, 8293), (64, 8314), (70, 8365), (71, 8371),

Gene: Gandalph_11 Start: 7627, Stop: 8436, Start Num: 17

Candidate Starts for Gandalph_11:

(Start: 17 @7627 has 221 MA's), (18, 7639), (20, 7717), (22, 7777), (23, 7783), (26, 7846), (31, 7957), (32, 7960), (33, 7963), (34, 7966), (36, 7996), (38, 8017), (39, 8026), (47, 8080), (58, 8242), (62, 8314), (64, 8335), (70, 8386), (71, 8392),

Gene: Geralt_11 Start: 7609, Stop: 8418, Start Num: 17

Candidate Starts for Geralt_11:

(Start: 9 @7537 has 9 MA's), (12, 7552), (Start: 17 @7609 has 221 MA's), (18, 7621), (21, 7735), (22, 7759), (23, 7765), (26, 7828), (32, 7942), (33, 7945), (34, 7948), (36, 7978), (38, 7999), (39, 8008), (46, 8056), (47, 8062), (49, 8089), (58, 8224), (62, 8296), (63, 8299), (64, 8317), (70, 8368), (71, 8374),

Gene: GigiOuiOui_11 Start: 7626, Stop: 8435, Start Num: 17

Candidate Starts for GigiOuiOui_11:

(Start: 17 @7626 has 221 MA's), (18, 7638), (20, 7716), (21, 7752), (22, 7776), (23, 7782), (26, 7845), (32, 7959), (33, 7962), (34, 7965), (36, 7995), (38, 8016), (39, 8025), (47, 8079), (58, 8241), (64, 8334), (70, 8385), (71, 8391),

Gene: Girafales_12 Start: 7458, Stop: 8267, Start Num: 17

Candidate Starts for Girafales_12:

(Start: 17 @7458 has 221 MA's), (18, 7470), (20, 7548), (21, 7584), (22, 7608), (23, 7614), (26, 7677), (32, 7791), (33, 7794), (34, 7797), (36, 7827), (38, 7848), (39, 7857), (47, 7911), (48, 7935), (58, 8073), (62, 8145), (64, 8166), (70, 8217), (71, 8223),

Gene: Girr_11 Start: 7614, Stop: 8423, Start Num: 17

Candidate Starts for Girr_11:

(Start: 13 @7557 has 2 MA's), (Start: 17 @7614 has 221 MA's), (18, 7626), (20, 7704), (21, 7740), (22, 7764), (23, 7770), (26, 7833), (32, 7947), (33, 7950), (34, 7953), (36, 7983), (38, 8004), (39, 8013), (47, 8067), (48, 8091), (49, 8094), (58, 8229), (62, 8301), (64, 8322), (69, 8355), (70, 8373), (71, 8379),

Gene: Gorge_11 Start: 7598, Stop: 8407, Start Num: 17

Candidate Starts for Gorge_11:

(Start: 17 @7598 has 221 MA's), (18, 7610), (20, 7688), (21, 7724), (22, 7748), (23, 7754), (26, 7817), (32, 7931), (33, 7934), (34, 7937), (36, 7967), (38, 7988), (39, 7997), (47, 8051), (58, 8213), (64, 8306), (70, 8357), (71, 8363),

Gene: Guppsters_11 Start: 7631, Stop: 8440, Start Num: 17

Candidate Starts for Guppsters_11:

(Start: 17 @7631 has 221 MA's), (18, 7643), (19, 7712), (20, 7721), (21, 7757), (22, 7781), (23, 7787), (26, 7850), (31, 7961), (32, 7964), (33, 7967), (34, 7970), (36, 8000), (38, 8021), (39, 8030), (47, 8084), (62, 8318), (64, 8339), (70, 8390), (71, 8396),

Gene: HC_13 Start: 8865, Stop: 9665, Start Num: 17

Candidate Starts for HC_13:

(15, 8820), (Start: 17 @8865 has 221 MA's), (20, 8961), (23, 9024), (28, 9102), (32, 9201), (36, 9237), (59, 9513), (64, 9573), (65, 9579),

Gene: Hades_11 Start: 7611, Stop: 8420, Start Num: 17

Candidate Starts for Hades_11:

(Start: 13 @7554 has 2 MA's), (Start: 17 @7611 has 221 MA's), (18, 7623), (20, 7701), (21, 7737), (22, 7761), (23, 7767), (26, 7830), (32, 7944), (33, 7947), (34, 7950), (36, 7980), (38, 8001), (39,

8010), (47, 8064), (49, 8091), (58, 8226), (62, 8298), (64, 8319), (69, 8352), (70, 8370), (71, 8376),

Gene: Hamulus_11 Start: 7635, Stop: 8444, Start Num: 17

Candidate Starts for Hamulus_11:

(Start: 17 @7635 has 221 MA's), (18, 7647), (19, 7716), (20, 7725), (21, 7761), (22, 7785), (23, 7791), (26, 7854), (31, 7965), (32, 7968), (33, 7971), (34, 7974), (36, 8004), (38, 8025), (39, 8034), (47, 8088), (58, 8250), (62, 8322), (64, 8343), (70, 8394), (71, 8400),

Gene: Harley_11 Start: 7600, Stop: 8409, Start Num: 17

Candidate Starts for Harley_11:

(Start: 13 @7543 has 2 MA's), (Start: 17 @7600 has 221 MA's), (18, 7612), (21, 7726), (22, 7750), (23, 7756), (26, 7819), (32, 7933), (33, 7936), (34, 7939), (36, 7969), (38, 7990), (39, 7999), (47, 8053), (58, 8215), (62, 8287), (64, 8308), (69, 8341), (70, 8359), (71, 8365),

Gene: Hegedechwinu_12 Start: 7463, Stop: 8272, Start Num: 17

Candidate Starts for Hegedechwinu_12:

(Start: 13 @7406 has 2 MA's), (Start: 17 @7463 has 221 MA's), (18, 7475), (19, 7544), (20, 7553), (21, 7589), (22, 7613), (23, 7619), (26, 7682), (31, 7793), (32, 7796), (33, 7799), (34, 7802), (36, 7832), (38, 7853), (39, 7862), (47, 7916), (58, 8078), (62, 8150), (64, 8171), (69, 8204), (70, 8222), (71, 8228),

Gene: Hlubikazi_11 Start: 7599, Stop: 8408, Start Num: 17

Candidate Starts for Hlubikazi_11:

(Start: 13 @7542 has 2 MA's), (Start: 17 @7599 has 221 MA's), (18, 7611), (20, 7689), (21, 7725), (22, 7749), (23, 7755), (26, 7818), (31, 7929), (32, 7932), (33, 7935), (34, 7938), (36, 7968), (38, 7989), (39, 7998), (46, 8046), (47, 8052), (48, 8076), (49, 8079), (58, 8214), (62, 8286), (64, 8307), (69, 8340), (70, 8358), (71, 8364),

Gene: lbOuu_11 Start: 7608, Stop: 8417, Start Num: 17

Candidate Starts for lbOuu_11:

(Start: 9 @7536 has 9 MA's), (12, 7551), (Start: 17 @7608 has 221 MA's), (18, 7620), (21, 7734), (22, 7758), (23, 7764), (26, 7827), (32, 7941), (33, 7944), (34, 7947), (36, 7977), (38, 7998), (39, 8007), (46, 8055), (47, 8061), (49, 8088), (58, 8223), (62, 8295), (63, 8298), (64, 8316), (70, 8367), (71, 8373),

Gene: lbhubesi_11 Start: 7600, Stop: 8409, Start Num: 17

Candidate Starts for lbhubesi_11:

(Start: 13 @7543 has 2 MA's), (Start: 17 @7600 has 221 MA's), (18, 7612), (21, 7726), (22, 7750), (23, 7756), (26, 7819), (32, 7933), (33, 7936), (34, 7939), (36, 7969), (38, 7990), (39, 7999), (47, 8053), (58, 8215), (62, 8287), (64, 8308), (69, 8341), (70, 8359), (71, 8365),

Gene: ldergollasper_47 Start: 23856, Stop: 24671, Start Num: 17

Candidate Starts for ldergollasper_47:

(Start: 17 @23856 has 221 MA's), (19, 23937), (26, 24078), (28, 24093), (32, 24192), (35, 24210), (41, 24273), (43, 24285), (45, 24300), (56, 24417), (61, 24543),

Gene: Inventum_11 Start: 7537, Stop: 8418, Start Num: 9

Candidate Starts for Inventum_11:

(Start: 9 @7537 has 9 MA's), (12, 7552), (Start: 17 @7609 has 221 MA's), (18, 7621), (21, 7735), (22, 7759), (23, 7765), (26, 7828), (32, 7942), (33, 7945), (34, 7948), (36, 7978), (38, 7999), (39, 8008), (47, 8062), (49, 8089), (58, 8224), (62, 8296), (64, 8317), (69, 8350), (70, 8368), (71, 8374),

Gene: IrishSherpFalk_11 Start: 7617, Stop: 8426, Start Num: 17

Candidate Starts for IrishSherpFalk_11:

(Start: 17 @7617 has 221 MA's), (18, 7629), (19, 7698), (20, 7707), (21, 7743), (22, 7767), (23, 7773), (26, 7836), (31, 7947), (32, 7950), (33, 7953), (34, 7956), (36, 7986), (38, 8007), (39, 8016), (47, 8070), (62, 8304), (64, 8325), (70, 8376), (71, 8382),

Gene: Island3_13 Start: 8865, Stop: 9665, Start Num: 17

Candidate Starts for Island3_13:

(15, 8820), (Start: 17 @8865 has 221 MA's), (20, 8961), (23, 9024), (28, 9102), (32, 9201), (36, 9237), (59, 9513), (64, 9573), (65, 9579),

Gene: JalFarm20_12 Start: 7462, Stop: 8271, Start Num: 17

Candidate Starts for JalFarm20_12:

(Start: 17 @7462 has 221 MA's), (18, 7474), (20, 7552), (21, 7588), (22, 7612), (23, 7618), (26, 7681), (32, 7795), (33, 7798), (34, 7801), (36, 7831), (38, 7852), (39, 7861), (46, 7909), (47, 7915), (49, 7942), (54, 8011), (58, 8077), (62, 8149), (64, 8170), (70, 8221), (71, 8227),

Gene: James_11 Start: 7601, Stop: 8410, Start Num: 17

Candidate Starts for James_11:

(Start: 13 @7544 has 2 MA's), (Start: 17 @7601 has 221 MA's), (18, 7613), (20, 7691), (21, 7727), (22, 7751), (23, 7757), (26, 7820), (32, 7934), (33, 7937), (34, 7940), (36, 7970), (38, 7991), (39, 8000), (46, 8048), (47, 8054), (48, 8078), (58, 8216), (62, 8288), (64, 8309), (69, 8342), (70, 8360), (71, 8366),

Gene: JangDynasty_47 Start: 23951, Stop: 24766, Start Num: 17

Candidate Starts for JangDynasty_47:

(Start: 17 @23951 has 221 MA's), (19, 24032), (26, 24173), (28, 24188), (32, 24287), (35, 24305), (41, 24368), (43, 24380), (45, 24395), (56, 24512), (61, 24638),

Gene: Jacob_11 Start: 7609, Stop: 8418, Start Num: 17

Candidate Starts for Jacob_11:

(Start: 9 @7537 has 9 MA's), (12, 7552), (Start: 17 @7609 has 221 MA's), (18, 7621), (20, 7699), (21, 7735), (22, 7759), (23, 7765), (26, 7828), (32, 7942), (33, 7945), (34, 7948), (36, 7978), (38, 7999), (39, 8008), (46, 8056), (47, 8062), (48, 8086), (58, 8224), (62, 8296), (64, 8317), (69, 8350), (70, 8368), (71, 8374),

Gene: Jinglebell_11 Start: 7607, Stop: 8416, Start Num: 17

Candidate Starts for Jinglebell_11:

(Start: 13 @7550 has 2 MA's), (Start: 17 @7607 has 221 MA's), (18, 7619), (20, 7697), (21, 7733), (22, 7757), (23, 7763), (26, 7826), (31, 7937), (32, 7940), (33, 7943), (34, 7946), (36, 7976), (38, 7997), (39, 8006), (46, 8054), (47, 8060), (48, 8084), (58, 8222), (62, 8294), (64, 8315), (70, 8366), (71, 8372),

Gene: Job42_12 Start: 7462, Stop: 8271, Start Num: 17

Candidate Starts for Job42_12:

(Start: 13 @7405 has 2 MA's), (Start: 17 @7462 has 221 MA's), (18, 7474), (20, 7552), (21, 7588), (22, 7612), (23, 7618), (26, 7681), (32, 7795), (33, 7798), (34, 7801), (36, 7831), (38, 7852), (39, 7861), (46, 7909), (47, 7915), (49, 7942), (62, 8149), (64, 8170), (70, 8221), (71, 8227),

Gene: JoeyJr_11 Start: 7609, Stop: 8418, Start Num: 17

Candidate Starts for JoeyJr_11:

(Start: 9 @7537 has 9 MA's), (12, 7552), (Start: 17 @7609 has 221 MA's), (18, 7621), (21, 7735), (22, 7759), (23, 7765), (26, 7828), (32, 7942), (33, 7945), (34, 7948), (36, 7978), (38, 7999), (39, 8008), (46, 8056), (47, 8062), (49, 8089), (58, 8224), (62, 8296), (63, 8299), (64, 8317), (70, 8368), (71,

8374),

Gene: Juice456_12 Start: 7463, Stop: 8272, Start Num: 17

Candidate Starts for Juice456_12:

(12, 7406), (Start: 17 @7463 has 221 MA's), (18, 7475), (21, 7589), (22, 7613), (23, 7619), (26, 7682), (32, 7796), (33, 7799), (34, 7802), (36, 7832), (38, 7853), (39, 7862), (47, 7916), (58, 8078), (62, 8150), (64, 8171), (70, 8222), (71, 8228),

Gene: Juniper1_11 Start: 7601, Stop: 8410, Start Num: 17

Candidate Starts for Juniper1_11:

(Start: 13 @7544 has 2 MA's), (Start: 17 @7601 has 221 MA's), (18, 7613), (20, 7691), (21, 7727), (22, 7751), (23, 7757), (26, 7820), (32, 7934), (33, 7937), (34, 7940), (36, 7970), (38, 7991), (39, 8000), (47, 8054), (48, 8078), (58, 8216), (62, 8288), (64, 8309), (70, 8360), (71, 8366),

Gene: Karhdo_11 Start: 7612, Stop: 8421, Start Num: 17

Candidate Starts for Karhdo_11:

(4, 7504), (12, 7555), (Start: 17 @7612 has 221 MA's), (18, 7624), (21, 7738), (22, 7762), (23, 7768), (26, 7831), (32, 7945), (33, 7948), (34, 7951), (36, 7981), (38, 8002), (39, 8011), (47, 8065), (58, 8227), (62, 8299), (64, 8320), (70, 8371), (71, 8377),

Gene: Kenuha5_11 Start: 7599, Stop: 8408, Start Num: 17

Candidate Starts for Kenuha5_11:

(Start: 17 @7599 has 221 MA's), (18, 7611), (19, 7680), (21, 7725), (22, 7749), (23, 7755), (26, 7818), (32, 7932), (33, 7935), (36, 7968), (38, 7989), (39, 7998), (47, 8052), (49, 8079), (50, 8085), (58, 8214), (62, 8286), (64, 8307), (70, 8358), (71, 8364),

Gene: Kersh_11 Start: 7603, Stop: 8412, Start Num: 17

Candidate Starts for Kersh_11:

(Start: 17 @7603 has 221 MA's), (18, 7615), (20, 7693), (21, 7729), (22, 7753), (23, 7759), (26, 7822), (32, 7936), (33, 7939), (34, 7942), (36, 7972), (38, 7993), (39, 8002), (47, 8056), (49, 8083), (58, 8218), (62, 8290), (64, 8311), (69, 8344), (70, 8362), (71, 8368),

Gene: Kimberlium_12 Start: 7463, Stop: 8272, Start Num: 17

Candidate Starts for Kimberlium_12:

(12, 7406), (Start: 17 @7463 has 221 MA's), (18, 7475), (21, 7589), (22, 7613), (23, 7619), (26, 7682), (32, 7796), (33, 7799), (34, 7802), (36, 7832), (38, 7853), (39, 7862), (47, 7916), (58, 8078), (62, 8150), (64, 8171), (70, 8222), (71, 8228),

Gene: KingMidas_11 Start: 7608, Stop: 8417, Start Num: 17

Candidate Starts for KingMidas_11:

(Start: 8 @7533 has 3 MA's), (Start: 9 @7536 has 9 MA's), (12, 7551), (Start: 17 @7608 has 221 MA's), (18, 7620), (20, 7698), (21, 7734), (22, 7758), (23, 7764), (26, 7827), (31, 7938), (32, 7941), (33, 7944), (34, 7947), (36, 7977), (38, 7998), (39, 8007), (47, 8061), (49, 8088), (58, 8223), (62, 8295), (64, 8316), (70, 8367), (71, 8373),

Gene: Kingsley_12 Start: 7460, Stop: 8269, Start Num: 17

Candidate Starts for Kingsley_12:

(Start: 13 @7403 has 2 MA's), (Start: 17 @7460 has 221 MA's), (18, 7472), (21, 7586), (22, 7610), (23, 7616), (26, 7679), (32, 7793), (33, 7796), (34, 7799), (36, 7829), (38, 7850), (39, 7859), (47, 7913), (58, 8075), (64, 8168), (70, 8219), (71, 8225),

Gene: Koella_11 Start: 7609, Stop: 8418, Start Num: 17

Candidate Starts for Koella_11:

(Start: 17 @7609 has 221 MA's), (18, 7621), (20, 7699), (21, 7735), (22, 7759), (23, 7765), (26, 7828), (32, 7942), (33, 7945), (34, 7948), (36, 7978), (38, 7999), (39, 8008), (47, 8062), (49, 8089), (58, 8224), (64, 8317), (70, 8368), (71, 8374),

Gene: Krakatau_12 Start: 8284, Stop: 9093, Start Num: 17

Candidate Starts for Krakatau_12:

(Start: 17 @8284 has 221 MA's), (18, 8296), (19, 8365), (20, 8374), (22, 8434), (23, 8440), (26, 8503), (30, 8602), (32, 8617), (33, 8620), (36, 8653), (38, 8674), (39, 8683), (47, 8737), (62, 8971), (64, 8992), (70, 9043), (71, 9049),

Gene: Krili_46 Start: 23573, Stop: 24388, Start Num: 17

Candidate Starts for Krili_46:

(Start: 17 @23573 has 221 MA's), (19, 23654), (26, 23795), (28, 23810), (32, 23909), (35, 23927), (41, 23990), (43, 24002), (45, 24017), (56, 24134), (61, 24260),

Gene: KristaRAM_12 Start: 8281, Stop: 9090, Start Num: 17

Candidate Starts for KristaRAM_12:

(Start: 17 @8281 has 221 MA's), (18, 8293), (19, 8362), (20, 8371), (22, 8431), (23, 8437), (26, 8500), (32, 8614), (33, 8617), (34, 8620), (36, 8650), (38, 8671), (39, 8680), (47, 8734), (58, 8896), (62, 8968), (64, 8989), (70, 9040), (71, 9046),

Gene: LastJedi_11 Start: 7601, Stop: 8410, Start Num: 17

Candidate Starts for LastJedi_11:

(Start: 13 @7544 has 2 MA's), (Start: 17 @7601 has 221 MA's), (18, 7613), (20, 7691), (21, 7727), (22, 7751), (23, 7757), (26, 7820), (32, 7934), (33, 7937), (34, 7940), (36, 7970), (38, 7991), (39, 8000), (46, 8048), (47, 8054), (48, 8078), (58, 8216), (62, 8288), (64, 8309), (69, 8342), (70, 8360), (71, 8366),

Gene: Latretium_11 Start: 7598, Stop: 8407, Start Num: 17

Candidate Starts for Latretium_11:

(Start: 13 @7541 has 2 MA's), (Start: 17 @7598 has 221 MA's), (18, 7610), (20, 7688), (21, 7724), (22, 7748), (23, 7754), (26, 7817), (32, 7931), (33, 7934), (34, 7937), (36, 7967), (38, 7988), (39, 7997), (46, 8045), (47, 8051), (48, 8075), (49, 8078), (58, 8213), (62, 8285), (64, 8306), (70, 8357), (71, 8363),

Gene: Leozinho_12 Start: 7461, Stop: 8270, Start Num: 17

Candidate Starts for Leozinho_12:

(Start: 8 @7386 has 3 MA's), (Start: 9 @7389 has 9 MA's), (12, 7404), (Start: 17 @7461 has 221 MA's), (18, 7473), (20, 7551), (21, 7587), (22, 7611), (23, 7617), (26, 7680), (32, 7794), (33, 7797), (34, 7800), (36, 7830), (38, 7851), (39, 7860), (47, 7914), (58, 8076), (62, 8148), (64, 8169), (70, 8220), (71, 8226),

Gene: Leperchaun_11 Start: 7598, Stop: 8407, Start Num: 17

Candidate Starts for Leperchaun_11:

(Start: 9 @7526 has 9 MA's), (12, 7541), (Start: 17 @7598 has 221 MA's), (18, 7610), (21, 7724), (22, 7748), (23, 7754), (26, 7817), (32, 7931), (33, 7934), (34, 7937), (36, 7967), (38, 7988), (39, 7997), (46, 8045), (47, 8051), (49, 8078), (58, 8213), (62, 8285), (63, 8288), (64, 8306), (70, 8357), (71, 8363),

Gene: LilMoolah_11 Start: 7610, Stop: 8419, Start Num: 17

Candidate Starts for LilMoolah_11:

(Start: 17 @7610 has 221 MA's), (18, 7622), (20, 7700), (21, 7736), (22, 7760), (23, 7766), (26, 7829), (32, 7943), (33, 7946), (34, 7949), (36, 7979), (38, 8000), (39, 8009), (46, 8057), (47, 8063), (58,

8225), (62, 8297), (64, 8318), (70, 8369), (71, 8375),

Gene: LittleShirley_12 Start: 7463, Stop: 8272, Start Num: 17

Candidate Starts for LittleShirley_12:

(Start: 17 @7463 has 221 MA's), (18, 7475), (20, 7553), (21, 7589), (22, 7613), (23, 7619), (26, 7682), (32, 7796), (33, 7799), (34, 7802), (36, 7832), (38, 7853), (39, 7862), (47, 7916), (58, 8078), (62, 8150), (64, 8171), (70, 8222), (71, 8228),

Gene: Lizziana_11 Start: 7610, Stop: 8419, Start Num: 17

Candidate Starts for Lizziana_11:

(Start: 9 @7538 has 9 MA's), (12, 7553), (Start: 17 @7610 has 221 MA's), (18, 7622), (20, 7700), (21, 7736), (22, 7760), (23, 7766), (26, 7829), (32, 7943), (33, 7946), (34, 7949), (36, 7979), (38, 8000), (39, 8009), (46, 8057), (47, 8063), (48, 8087), (58, 8225), (62, 8297), (64, 8318), (69, 8351), (70, 8369), (71, 8375),

Gene: Llama_11 Start: 7607, Stop: 8416, Start Num: 17

Candidate Starts for Llama_11:

(Start: 13 @7550 has 2 MA's), (Start: 17 @7607 has 221 MA's), (18, 7619), (20, 7697), (21, 7733), (22, 7757), (23, 7763), (26, 7826), (31, 7937), (32, 7940), (33, 7943), (34, 7946), (36, 7976), (38, 7997), (39, 8006), (46, 8054), (47, 8060), (48, 8084), (58, 8222), (62, 8294), (64, 8315), (70, 8366), (71, 8372),

Gene: Llij_11 Start: 7626, Stop: 8435, Start Num: 17

Candidate Starts for Llij_11:

(Start: 17 @7626 has 221 MA's), (18, 7638), (20, 7716), (21, 7752), (22, 7776), (23, 7782), (26, 7845), (32, 7959), (33, 7962), (34, 7965), (36, 7995), (38, 8016), (39, 8025), (47, 8079), (49, 8106), (58, 8241), (62, 8313), (64, 8334), (70, 8385), (71, 8391),

Gene: Lorde_12 Start: 7462, Stop: 8271, Start Num: 17

Candidate Starts for Lorde_12:

(Start: 9 @7390 has 9 MA's), (12, 7405), (Start: 17 @7462 has 221 MA's), (18, 7474), (19, 7543), (20, 7552), (21, 7588), (22, 7612), (23, 7618), (26, 7681), (31, 7792), (32, 7795), (33, 7798), (34, 7801), (36, 7831), (38, 7852), (39, 7861), (47, 7915), (62, 8149), (64, 8170), (70, 8221), (71, 8227),

Gene: LunaBlu_11 Start: 7606, Stop: 8415, Start Num: 17

Candidate Starts for LunaBlu_11:

(Start: 17 @7606 has 221 MA's), (18, 7618), (19, 7687), (20, 7696), (21, 7732), (22, 7756), (23, 7762), (26, 7825), (31, 7936), (32, 7939), (33, 7942), (34, 7945), (36, 7975), (38, 7996), (39, 8005), (47, 8059), (62, 8293), (64, 8314), (70, 8365), (71, 8371),

Gene: LunaStella_12 Start: 8033, Stop: 8845, Start Num: 17

Candidate Starts for LunaStella_12:

(Start: 17 @8033 has 221 MA's), (20, 8123), (21, 8159), (29, 8348), (31, 8363), (32, 8366), (40, 8438), (49, 8513), (57, 8630), (58, 8648), (64, 8741), (67, 8768), (72, 8825),

Gene: MadKillah_48 Start: 23795, Stop: 24610, Start Num: 17

Candidate Starts for MadKillah_48:

(Start: 17 @23795 has 221 MA's), (19, 23876), (26, 24017), (28, 24032), (32, 24131), (35, 24149), (41, 24212), (43, 24224), (45, 24239), (56, 24356), (61, 24482),

Gene: MadMen_11 Start: 7624, Stop: 8433, Start Num: 17

Candidate Starts for MadMen_11:

(Start: 9 @7552 has 9 MA's), (12, 7567), (Start: 17 @7624 has 221 MA's), (18, 7636), (20, 7714), (21, 7750), (22, 7774), (23, 7780), (26, 7843), (32, 7957), (33, 7960), (34, 7963), (36, 7993), (38, 8014), (39, 8023), (47, 8077), (49, 8104), (58, 8239), (62, 8311), (64, 8332), (70, 8383), (71, 8389),

Gene: Madiba_12 Start: 7457, Stop: 8266, Start Num: 17

Candidate Starts for Madiba_12:

(Start: 17 @7457 has 221 MA's), (18, 7469), (21, 7583), (22, 7607), (23, 7613), (26, 7676), (32, 7790), (33, 7793), (34, 7796), (36, 7826), (38, 7847), (39, 7856), (47, 7910), (58, 8072), (62, 8144), (64, 8165), (70, 8216), (71, 8222),

Gene: Mahavrat_11 Start: 7598, Stop: 8407, Start Num: 17

Candidate Starts for Mahavrat_11:

(Start: 13 @7541 has 2 MA's), (Start: 17 @7598 has 221 MA's), (18, 7610), (20, 7688), (21, 7724), (22, 7748), (23, 7754), (26, 7817), (32, 7931), (33, 7934), (34, 7937), (36, 7967), (38, 7988), (39, 7997), (47, 8051), (48, 8075), (58, 8213), (62, 8285), (64, 8306), (70, 8357), (71, 8363),

Gene: Mandlovu_11 Start: 7599, Stop: 8408, Start Num: 17

Candidate Starts for Mandlovu_11:

(Start: 13 @7542 has 2 MA's), (Start: 17 @7599 has 221 MA's), (18, 7611), (20, 7689), (21, 7725), (22, 7749), (23, 7755), (26, 7818), (31, 7929), (32, 7932), (33, 7935), (34, 7938), (36, 7968), (38, 7989), (39, 7998), (46, 8046), (47, 8052), (48, 8076), (49, 8079), (58, 8214), (62, 8286), (64, 8307), (69, 8340), (70, 8358), (71, 8364),

Gene: Mantra_11 Start: 7626, Stop: 8435, Start Num: 17

Candidate Starts for Mantra_11:

(Start: 17 @7626 has 221 MA's), (18, 7638), (20, 7716), (21, 7752), (22, 7776), (23, 7782), (26, 7845), (32, 7959), (33, 7962), (34, 7965), (36, 7995), (38, 8016), (39, 8025), (46, 8073), (47, 8079), (49, 8106), (58, 8241), (62, 8313), (63, 8316), (64, 8334), (70, 8385), (71, 8391),

Gene: Maravista_11 Start: 7598, Stop: 8407, Start Num: 17

Candidate Starts for Maravista_11:

(Start: 9 @7526 has 9 MA's), (12, 7541), (Start: 17 @7598 has 221 MA's), (18, 7610), (20, 7688), (21, 7724), (22, 7748), (23, 7754), (26, 7817), (32, 7931), (33, 7934), (34, 7937), (36, 7967), (38, 7988), (39, 7997), (46, 8045), (47, 8051), (48, 8075), (58, 8213), (62, 8285), (64, 8306), (69, 8339), (70, 8357), (71, 8363),

Gene: Marker_12 Start: 7460, Stop: 8269, Start Num: 17

Candidate Starts for Marker_12:

(Start: 13 @7403 has 2 MA's), (Start: 17 @7460 has 221 MA's), (18, 7472), (20, 7550), (21, 7586), (22, 7610), (23, 7616), (26, 7679), (31, 7790), (32, 7793), (33, 7796), (34, 7799), (36, 7829), (38, 7850), (39, 7859), (46, 7907), (47, 7913), (49, 7940), (54, 8009), (58, 8075), (62, 8147), (64, 8168), (70, 8219), (71, 8225),

Gene: Martik_11 Start: 7610, Stop: 8419, Start Num: 17

Candidate Starts for Martik_11:

(Start: 9 @7538 has 9 MA's), (12, 7553), (Start: 17 @7610 has 221 MA's), (18, 7622), (20, 7700), (21, 7736), (22, 7760), (23, 7766), (26, 7829), (32, 7943), (33, 7946), (34, 7949), (36, 7979), (38, 8000), (39, 8009), (46, 8057), (47, 8063), (48, 8087), (58, 8225), (62, 8297), (64, 8318), (69, 8351), (70, 8369), (71, 8375),

Gene: Mattes_11 Start: 7601, Stop: 8410, Start Num: 17

Candidate Starts for Mattes_11:

(Start: 13 @7544 has 2 MA's), (Start: 17 @7601 has 221 MA's), (18, 7613), (20, 7691), (21, 7727), (22, 7751), (23, 7757), (26, 7820), (32, 7934), (33, 7937), (34, 7940), (36, 7970), (38, 7991), (39, 8000), (46, 8048), (47, 8054), (48, 8078), (58, 8216), (62, 8288), (64, 8309), (69, 8342), (70, 8360), (71, 8366),

Gene: Melissauren88_11 Start: 7631, Stop: 8440, Start Num: 17

Candidate Starts for Melissauren88_11:

(Start: 10 @7559 has 1 MA's), (Start: 17 @7631 has 221 MA's), (18, 7643), (19, 7712), (20, 7721), (21, 7757), (22, 7781), (23, 7787), (26, 7850), (31, 7961), (32, 7964), (33, 7967), (36, 8000), (38, 8021), (39, 8030), (47, 8084), (58, 8246), (62, 8318), (64, 8339), (70, 8390), (71, 8396),

Gene: MilanaBonita_12 Start: 8280, Stop: 9089, Start Num: 17

Candidate Starts for MilanaBonita_12:

(Start: 17 @8280 has 221 MA's), (18, 8292), (19, 8361), (20, 8370), (21, 8406), (22, 8430), (23, 8436), (26, 8499), (30, 8598), (32, 8613), (33, 8616), (34, 8619), (36, 8649), (38, 8670), (39, 8679), (47, 8733), (58, 8895), (62, 8967), (64, 8988), (70, 9039), (71, 9045),

Gene: MilleniumForce_12 Start: 8279, Stop: 9088, Start Num: 17

Candidate Starts for MilleniumForce_12:

(Start: 10 @8207 has 1 MA's), (Start: 17 @8279 has 221 MA's), (18, 8291), (19, 8360), (20, 8369), (21, 8405), (22, 8429), (23, 8435), (26, 8498), (31, 8609), (32, 8612), (33, 8615), (34, 8618), (36, 8648), (38, 8669), (39, 8678), (47, 8732), (58, 8894), (62, 8966), (64, 8987), (70, 9038), (71, 9044),

Gene: MinionDave_12 Start: 8280, Stop: 9089, Start Num: 17

Candidate Starts for MinionDave_12:

(Start: 17 @8280 has 221 MA's), (18, 8292), (19, 8361), (20, 8370), (22, 8430), (23, 8436), (26, 8499), (32, 8613), (33, 8616), (34, 8619), (36, 8649), (38, 8670), (39, 8679), (47, 8733), (62, 8967), (64, 8988), (70, 9039), (71, 9045),

Gene: Minnie_11 Start: 7626, Stop: 8435, Start Num: 17

Candidate Starts for Minnie_11:

(Start: 17 @7626 has 221 MA's), (18, 7638), (20, 7716), (21, 7752), (22, 7776), (23, 7782), (26, 7845), (32, 7959), (33, 7962), (34, 7965), (36, 7995), (38, 8016), (39, 8025), (47, 8079), (49, 8106), (58, 8241), (64, 8334), (70, 8385), (71, 8391),

Gene: Misha28_12 Start: 7464, Stop: 8273, Start Num: 17

Candidate Starts for Misha28_12:

(Start: 13 @7407 has 2 MA's), (Start: 17 @7464 has 221 MA's), (18, 7476), (20, 7554), (21, 7590), (22, 7614), (23, 7620), (26, 7683), (32, 7797), (33, 7800), (34, 7803), (36, 7833), (38, 7854), (39, 7863), (47, 7917), (49, 7944), (58, 8079), (62, 8151), (64, 8172), (70, 8223), (71, 8229),

Gene: MisterCuddles_11 Start: 7614, Stop: 8423, Start Num: 17

Candidate Starts for MisterCuddles_11:

(Start: 13 @7557 has 2 MA's), (Start: 17 @7614 has 221 MA's), (18, 7626), (20, 7704), (21, 7740), (22, 7764), (23, 7770), (26, 7833), (32, 7947), (33, 7950), (34, 7953), (36, 7983), (38, 8004), (39, 8013), (47, 8067), (48, 8091), (49, 8094), (58, 8229), (62, 8301), (64, 8322), (69, 8355), (70, 8373), (71, 8379),

Gene: Modragons_11 Start: 7607, Stop: 8416, Start Num: 17

Candidate Starts for Modragons_11:

(Start: 13 @7550 has 2 MA's), (Start: 17 @7607 has 221 MA's), (18, 7619), (20, 7697), (21, 7733), (22, 7757), (23, 7763), (26, 7826), (31, 7937), (32, 7940), (33, 7943), (34, 7946), (36, 7976), (38, 7997), (39, 8006), (46, 8054), (47, 8060), (48, 8084), (58, 8222), (62, 8294), (64, 8315), (70, 8366),

(71, 8372),

Gene: MooMoo_11 Start: 7161, Stop: 7961, Start Num: 17

Candidate Starts for MooMoo_11:

(Start: 14 @7110 has 1 MA's), (Start: 17 @7161 has 221 MA's), (20, 7257), (24, 7353), (27, 7392), (32, 7497), (44, 7602), (51, 7683), (52, 7686), (53, 7701), (57, 7761), (60, 7836), (64, 7869), (65, 7875), (66, 7878),

Gene: Moonbeam_11 Start: 7611, Stop: 8420, Start Num: 17

Candidate Starts for Moonbeam_11:

(Start: 17 @7611 has 221 MA's), (18, 7623), (20, 7701), (21, 7737), (22, 7761), (23, 7767), (26, 7830), (31, 7941), (32, 7944), (33, 7947), (34, 7950), (36, 7980), (38, 8001), (39, 8010), (47, 8064), (58, 8226), (62, 8298), (64, 8319), (70, 8370), (71, 8376),

Gene: Mori_46 Start: 23444, Stop: 24259, Start Num: 17

Candidate Starts for Mori_46:

(Start: 17 @23444 has 221 MA's), (19, 23525), (26, 23666), (28, 23681), (32, 23780), (35, 23798), (41, 23861), (43, 23873), (45, 23888), (56, 24005), (61, 24131),

Gene: Mova_12 Start: 7464, Stop: 8273, Start Num: 17

Candidate Starts for Mova_12:

(Start: 9 @7392 has 9 MA's), (12, 7407), (Start: 17 @7464 has 221 MA's), (18, 7476), (21, 7590), (22, 7614), (23, 7620), (26, 7683), (31, 7794), (32, 7797), (33, 7800), (34, 7803), (36, 7833), (38, 7854), (39, 7863), (47, 7917), (49, 7944), (58, 8079), (62, 8151), (64, 8172), (70, 8223), (71, 8229),

Gene: Mozy_12 Start: 7477, Stop: 8286, Start Num: 17

Candidate Starts for Mozy_12:

(Start: 17 @7477 has 221 MA's), (18, 7489), (19, 7558), (20, 7567), (21, 7603), (22, 7627), (23, 7633), (26, 7696), (32, 7810), (33, 7813), (36, 7846), (38, 7867), (39, 7876), (47, 7930), (49, 7957), (55, 8032), (62, 8164), (64, 8185), (70, 8236), (71, 8242),

Gene: Ms6_11 Start: 7631, Stop: 8440, Start Num: 17

Candidate Starts for Ms6_11:

(Start: 10 @7559 has 1 MA's), (Start: 17 @7631 has 221 MA's), (18, 7643), (19, 7712), (20, 7721), (22, 7781), (23, 7787), (26, 7850), (32, 7964), (33, 7967), (36, 8000), (38, 8021), (39, 8030), (47, 8084), (58, 8246), (62, 8318), (64, 8339), (70, 8390), (71, 8396),

Gene: MulchSalad_11 Start: 7612, Stop: 8421, Start Num: 17

Candidate Starts for MulchSalad_11:

(Start: 17 @7612 has 221 MA's), (18, 7624), (20, 7702), (21, 7738), (22, 7762), (23, 7768), (26, 7831), (32, 7945), (33, 7948), (34, 7951), (36, 7981), (38, 8002), (39, 8011), (47, 8065), (58, 8227), (62, 8299), (64, 8320), (70, 8371), (71, 8377),

Gene: Murai_47 Start: 23634, Stop: 24449, Start Num: 17

Candidate Starts for Murai_47:

(Start: 17 @23634 has 221 MA's), (19, 23715), (26, 23856), (28, 23871), (32, 23970), (35, 23988), (41, 24051), (43, 24063), (45, 24078), (56, 24195), (61, 24321),

Gene: Mutaforma13_11 Start: 7630, Stop: 8439, Start Num: 17

Candidate Starts for Mutaforma13_11:

(Start: 17 @7630 has 221 MA's), (18, 7642), (19, 7711), (20, 7720), (21, 7756), (22, 7780), (23, 7786), (26, 7849), (31, 7960), (32, 7963), (33, 7966), (34, 7969), (36, 7999), (38, 8020), (39, 8029), (47, 8083), (49, 8110), (62, 8317), (64, 8338), (70, 8389), (71, 8395),

Gene: NiebruSaylor_46 Start: 23445, Stop: 24260, Start Num: 17

Candidate Starts for NiebruSaylor_46:

(Start: 17 @23445 has 221 MA's), (19, 23526), (26, 23667), (28, 23682), (32, 23781), (35, 23799), (41, 23862), (43, 23874), (45, 23889), (56, 24006), (61, 24132),

Gene: Nimbo_11 Start: 7609, Stop: 8418, Start Num: 17

Candidate Starts for Nimbo_11:

(Start: 9 @7537 has 9 MA's), (12, 7552), (Start: 17 @7609 has 221 MA's), (18, 7621), (21, 7735), (22, 7759), (23, 7765), (26, 7828), (32, 7942), (33, 7945), (34, 7948), (36, 7978), (38, 7999), (39, 8008), (46, 8056), (47, 8062), (49, 8089), (58, 8224), (62, 8296), (63, 8299), (64, 8317), (70, 8368), (71, 8374),

Gene: Nitzel_12 Start: 8262, Stop: 9071, Start Num: 17

Candidate Starts for Nitzel_12:

(Start: 17 @8262 has 221 MA's), (18, 8274), (20, 8352), (21, 8388), (22, 8412), (23, 8418), (26, 8481), (32, 8595), (33, 8598), (34, 8601), (36, 8631), (38, 8652), (39, 8661), (47, 8715), (49, 8742), (58, 8877), (64, 8970), (70, 9021), (71, 9027),

Gene: Nivrat_11 Start: 7609, Stop: 8418, Start Num: 17

Candidate Starts for Nivrat_11:

(Start: 9 @7537 has 9 MA's), (12, 7552), (Start: 17 @7609 has 221 MA's), (18, 7621), (20, 7699), (21, 7735), (22, 7759), (23, 7765), (26, 7828), (32, 7942), (33, 7945), (34, 7948), (36, 7978), (38, 7999), (39, 8008), (46, 8056), (47, 8062), (48, 8086), (58, 8224), (62, 8296), (64, 8317), (69, 8350), (70, 8368), (71, 8374),

Gene: NormanBulbieJr_11 Start: 7597, Stop: 8406, Start Num: 17

Candidate Starts for NormanBulbieJr_11:

(Start: 17 @7597 has 221 MA's), (18, 7609), (20, 7687), (21, 7723), (22, 7747), (23, 7753), (26, 7816), (32, 7930), (33, 7933), (34, 7936), (36, 7966), (38, 7987), (39, 7996), (47, 8050), (49, 8077), (62, 8284), (64, 8305), (70, 8356), (71, 8362),

Gene: Ochi17_11 Start: 7607, Stop: 8416, Start Num: 17

Candidate Starts for Ochi17_11:

(Start: 13 @7550 has 2 MA's), (Start: 17 @7607 has 221 MA's), (18, 7619), (20, 7697), (21, 7733), (22, 7757), (23, 7763), (26, 7826), (31, 7937), (32, 7940), (33, 7943), (34, 7946), (36, 7976), (38, 7997), (39, 8006), (46, 8054), (47, 8060), (48, 8084), (58, 8222), (62, 8294), (64, 8315), (70, 8366), (71, 8372),

Gene: OfUltron_11 Start: 7607, Stop: 8416, Start Num: 17

Candidate Starts for OfUltron_11:

(Start: 13 @7550 has 2 MA's), (Start: 17 @7607 has 221 MA's), (18, 7619), (20, 7697), (21, 7733), (22, 7757), (23, 7763), (26, 7826), (31, 7937), (32, 7940), (33, 7943), (34, 7946), (36, 7976), (38, 7997), (39, 8006), (46, 8054), (47, 8060), (48, 8084), (58, 8222), (62, 8294), (64, 8315), (70, 8366), (71, 8372),

Gene: Ogotogo_14 Start: 7806, Stop: 8672, Start Num: 13

Candidate Starts for Ogotogo_14:

(Start: 13 @7806 has 2 MA's), (Start: 17 @7863 has 221 MA's), (18, 7875), (20, 7953), (21, 7989), (22, 8013), (23, 8019), (26, 8082), (32, 8196), (33, 8199), (34, 8202), (36, 8232), (38, 8253), (39, 8262), (46, 8310), (47, 8316), (48, 8340), (49, 8343), (58, 8478), (62, 8550), (64, 8571), (69, 8604), (70, 8622), (71, 8628),

Gene: Oksu_12 Start: 7463, Stop: 8272, Start Num: 17

Candidate Starts for Oksu_12:

(Start: 13 @7406 has 2 MA's), (Start: 17 @7463 has 221 MA's), (18, 7475), (21, 7589), (22, 7613), (23, 7619), (26, 7682), (32, 7796), (33, 7799), (34, 7802), (36, 7832), (38, 7853), (39, 7862), (46, 7910), (47, 7916), (48, 7940), (49, 7943), (58, 8078), (62, 8150), (64, 8171), (69, 8204), (70, 8222), (71, 8228),

Gene: OldBen_11 Start: 7609, Stop: 8418, Start Num: 17

Candidate Starts for OldBen_11:

(Start: 9 @7537 has 9 MA's), (12, 7552), (Start: 17 @7609 has 221 MA's), (18, 7621), (21, 7735), (22, 7759), (23, 7765), (26, 7828), (32, 7942), (33, 7945), (34, 7948), (36, 7978), (38, 7999), (39, 8008), (46, 8056), (47, 8062), (49, 8089), (58, 8224), (62, 8296), (63, 8299), (64, 8317), (70, 8368), (71, 8374),

Gene: OlympiaSaint_11 Start: 7610, Stop: 8419, Start Num: 17

Candidate Starts for OlympiaSaint_11:

(Start: 17 @7610 has 221 MA's), (18, 7622), (20, 7700), (21, 7736), (22, 7760), (23, 7766), (26, 7829), (32, 7943), (33, 7946), (34, 7949), (36, 7979), (38, 8000), (39, 8009), (47, 8063), (49, 8090), (62, 8297), (64, 8318), (70, 8369), (71, 8375),

Gene: Ovechkin_11 Start: 7631, Stop: 8440, Start Num: 17

Candidate Starts for Ovechkin_11:

(Start: 10 @7559 has 1 MA's), (Start: 17 @7631 has 221 MA's), (18, 7643), (19, 7712), (20, 7721), (22, 7781), (23, 7787), (26, 7850), (32, 7964), (33, 7967), (36, 8000), (38, 8021), (39, 8030), (47, 8084), (58, 8246), (62, 8318), (64, 8339), (70, 8390), (71, 8396),

Gene: OwlsT2W_12 Start: 7461, Stop: 8270, Start Num: 17

Candidate Starts for OwlsT2W_12:

(Start: 8 @7386 has 3 MA's), (Start: 9 @7389 has 9 MA's), (12, 7404), (Start: 17 @7461 has 221 MA's), (18, 7473), (20, 7551), (21, 7587), (22, 7611), (23, 7617), (26, 7680), (32, 7794), (33, 7797), (34, 7800), (36, 7830), (38, 7851), (39, 7860), (46, 7908), (47, 7914), (49, 7941), (54, 8010), (58, 8076), (62, 8148), (64, 8169), (70, 8220), (71, 8226),

Gene: PHappiness_11 Start: 7609, Stop: 8418, Start Num: 17

Candidate Starts for PHappiness_11:

(Start: 9 @7537 has 9 MA's), (12, 7552), (Start: 17 @7609 has 221 MA's), (18, 7621), (21, 7735), (22, 7759), (23, 7765), (26, 7828), (32, 7942), (33, 7945), (34, 7948), (36, 7978), (38, 7999), (39, 8008), (46, 8056), (47, 8062), (49, 8089), (58, 8224), (62, 8296), (63, 8299), (64, 8317), (70, 8368), (71, 8374),

Gene: PMC_11 Start: 7626, Stop: 8435, Start Num: 17

Candidate Starts for PMC_11:

(Start: 17 @7626 has 221 MA's), (18, 7638), (20, 7716), (21, 7752), (22, 7776), (23, 7782), (26, 7845), (32, 7959), (33, 7962), (34, 7965), (36, 7995), (38, 8016), (39, 8025), (47, 8079), (49, 8106), (58, 8241), (62, 8313), (64, 8334), (70, 8385), (71, 8391),

Gene: Pacc40_11 Start: 7537, Stop: 8418, Start Num: 9

Candidate Starts for Pacc40_11:

(Start: 9 @7537 has 9 MA's), (12, 7552), (Start: 17 @7609 has 221 MA's), (18, 7621), (21, 7735), (22, 7759), (23, 7765), (26, 7828), (32, 7942), (33, 7945), (34, 7948), (36, 7978), (38, 7999), (39, 8008), (46, 8056), (47, 8062), (49, 8089), (58, 8224), (62, 8296), (63, 8299), (64, 8317), (70, 8368), (71, 8374),

Gene: Phalconet_11 Start: 7631, Stop: 8440, Start Num: 17

Candidate Starts for Phalconet_11:

(Start: 10 @7559 has 1 MA's), (Start: 17 @7631 has 221 MA's), (18, 7643), (19, 7712), (20, 7721), (21, 7757), (22, 7781), (23, 7787), (26, 7850), (30, 7949), (32, 7964), (33, 7967), (36, 8000), (38, 8021), (39, 8030), (47, 8084), (62, 8318), (64, 8339), (70, 8390), (71, 8396),

Gene: Phanphagia_11 Start: 7632, Stop: 8441, Start Num: 17

Candidate Starts for Phanphagia_11:

(Start: 17 @7632 has 221 MA's), (18, 7644), (19, 7713), (20, 7722), (21, 7758), (22, 7782), (23, 7788), (26, 7851), (31, 7962), (32, 7965), (33, 7968), (34, 7971), (36, 8001), (38, 8022), (39, 8031), (47, 8085), (62, 8319), (64, 8340), (70, 8391), (71, 8397),

Gene: Phasih_11 Start: 7625, Stop: 8434, Start Num: 17

Candidate Starts for Phasih_11:

(Start: 13 @7568 has 2 MA's), (Start: 17 @7625 has 221 MA's), (18, 7637), (19, 7706), (20, 7715), (22, 7775), (23, 7781), (26, 7844), (32, 7958), (33, 7961), (34, 7964), (36, 7994), (38, 8015), (39, 8024), (47, 8078), (48, 8102), (62, 8312), (64, 8333), (69, 8366), (70, 8384), (71, 8390),

Gene: Phatniss_11 Start: 7609, Stop: 8418, Start Num: 17

Candidate Starts for Phatniss_11:

(Start: 17 @7609 has 221 MA's), (18, 7621), (20, 7699), (21, 7735), (22, 7759), (23, 7765), (26, 7828), (32, 7942), (33, 7945), (34, 7948), (36, 7978), (38, 7999), (39, 8008), (47, 8062), (49, 8089), (58, 8224), (62, 8296), (64, 8317), (70, 8368), (71, 8374),

Gene: PhesterPhotato_11 Start: 7631, Stop: 8440, Start Num: 17

Candidate Starts for PhesterPhotato_11:

(Start: 10 @7559 has 1 MA's), (12, 7571), (Start: 17 @7631 has 221 MA's), (18, 7643), (19, 7712), (20, 7721), (21, 7757), (22, 7781), (23, 7787), (26, 7850), (31, 7961), (32, 7964), (33, 7967), (34, 7970), (36, 8000), (38, 8021), (39, 8030), (47, 8084), (58, 8246), (62, 8318), (64, 8339), (70, 8390), (71, 8396),

Gene: Philus_11 Start: 7609, Stop: 8418, Start Num: 17

Candidate Starts for Philus_11:

(Start: 9 @7537 has 9 MA's), (12, 7552), (Start: 17 @7609 has 221 MA's), (18, 7621), (20, 7699), (21, 7735), (22, 7759), (23, 7765), (26, 7828), (32, 7942), (33, 7945), (34, 7948), (36, 7978), (38, 7999), (39, 8008), (46, 8056), (47, 8062), (48, 8086), (58, 8224), (62, 8296), (64, 8317), (69, 8350), (70, 8368), (71, 8374),

Gene: Piper2020_12 Start: 7463, Stop: 8272, Start Num: 17

Candidate Starts for Piper2020_12:

(Start: 9 @7391 has 9 MA's), (12, 7406), (Start: 17 @7463 has 221 MA's), (18, 7475), (20, 7553), (21, 7589), (22, 7613), (23, 7619), (26, 7682), (32, 7796), (33, 7799), (34, 7802), (36, 7832), (38, 7853), (39, 7862), (46, 7910), (47, 7916), (49, 7943), (58, 8078), (62, 8150), (64, 8171), (70, 8222), (71, 8228),

Gene: Pippy_11 Start: 7597, Stop: 8406, Start Num: 17

Candidate Starts for Pippy_11:

(Start: 17 @7597 has 221 MA's), (18, 7609), (20, 7687), (21, 7723), (22, 7747), (23, 7753), (26, 7816), (32, 7930), (33, 7933), (34, 7936), (36, 7966), (38, 7987), (39, 7996), (47, 8050), (58, 8212), (64, 8305), (70, 8356), (71, 8362),

Gene: Plumbus_12 Start: 7463, Stop: 8272, Start Num: 17

Candidate Starts for Plumbus_12:

(12, 7406), (Start: 17 @7463 has 221 MA's), (18, 7475), (21, 7589), (22, 7613), (23, 7619), (26, 7682), (32, 7796), (33, 7799), (34, 7802), (36, 7832), (38, 7853), (39, 7862), (47, 7916), (58, 8078), (62, 8150), (64, 8171), (70, 8222), (71, 8228),

Gene: Poenanya_11 Start: 7609, Stop: 8418, Start Num: 17

Candidate Starts for Poenanya_11:

(Start: 9 @7537 has 9 MA's), (12, 7552), (Start: 17 @7609 has 221 MA's), (18, 7621), (21, 7735), (22, 7759), (23, 7765), (26, 7828), (32, 7942), (33, 7945), (34, 7948), (36, 7978), (38, 7999), (39, 8008), (46, 8056), (47, 8062), (49, 8089), (58, 8224), (62, 8296), (63, 8299), (64, 8317), (70, 8368), (71, 8374),

Gene: Polka14_11 Start: 7610, Stop: 8419, Start Num: 17

Candidate Starts for Polka14_11:

(Start: 9 @7538 has 9 MA's), (12, 7553), (Start: 17 @7610 has 221 MA's), (18, 7622), (21, 7736), (22, 7760), (23, 7766), (26, 7829), (32, 7943), (33, 7946), (34, 7949), (36, 7979), (38, 8000), (39, 8009), (47, 8063), (49, 8090), (58, 8225), (62, 8297), (64, 8318), (69, 8351), (70, 8369), (71, 8375),

Gene: Pollywog_12 Start: 7462, Stop: 8271, Start Num: 17

Candidate Starts for Pollywog_12:

(Start: 9 @7390 has 9 MA's), (12, 7405), (Start: 17 @7462 has 221 MA's), (18, 7474), (21, 7588), (22, 7612), (23, 7618), (26, 7681), (32, 7795), (33, 7798), (34, 7801), (36, 7831), (38, 7852), (39, 7861), (47, 7915), (49, 7942), (58, 8077), (62, 8149), (64, 8170), (69, 8203), (70, 8221), (71, 8227),

Gene: PopTart_11 Start: 7631, Stop: 8440, Start Num: 17

Candidate Starts for PopTart_11:

(Start: 10 @7559 has 1 MA's), (Start: 17 @7631 has 221 MA's), (18, 7643), (19, 7712), (20, 7721), (21, 7757), (22, 7781), (23, 7787), (26, 7850), (31, 7961), (32, 7964), (33, 7967), (34, 7970), (36, 8000), (38, 8021), (39, 8030), (47, 8084), (62, 8318), (64, 8339), (70, 8390), (71, 8396),

Gene: Priscilla_11 Start: 7610, Stop: 8419, Start Num: 17

Candidate Starts for Priscilla_11:

(Start: 17 @7610 has 221 MA's), (18, 7622), (20, 7700), (21, 7736), (22, 7760), (23, 7766), (26, 7829), (32, 7943), (33, 7946), (34, 7949), (36, 7979), (38, 8000), (39, 8009), (47, 8063), (49, 8090), (58, 8225), (62, 8297), (64, 8318), (69, 8351), (70, 8369), (71, 8375),

Gene: QueenHazel_13 Start: 8870, Stop: 9670, Start Num: 17

Candidate Starts for QueenHazel_13:

(15, 8825), (Start: 17 @8870 has 221 MA's), (20, 8966), (23, 9029), (28, 9107), (32, 9206), (36, 9242), (59, 9518), (64, 9578), (65, 9584),

Gene: QuickMath_11 Start: 7632, Stop: 8441, Start Num: 17

Candidate Starts for QuickMath_11:

(Start: 10 @7560 has 1 MA's), (Start: 17 @7632 has 221 MA's), (18, 7644), (19, 7713), (20, 7722), (21, 7758), (22, 7782), (23, 7788), (26, 7851), (31, 7962), (32, 7965), (33, 7968), (36, 8001), (38, 8022), (39, 8031), (47, 8085), (58, 8247), (62, 8319), (64, 8340), (70, 8391), (71, 8397),

Gene: Quico_12 Start: 7458, Stop: 8267, Start Num: 17

Candidate Starts for Quico_12:

(Start: 17 @7458 has 221 MA's), (18, 7470), (20, 7548), (21, 7584), (22, 7608), (23, 7614), (26, 7677), (32, 7791), (33, 7794), (34, 7797), (36, 7827), (38, 7848), (39, 7857), (47, 7911), (48, 7935), (58, 8073), (62, 8145), (64, 8166), (70, 8217), (71, 8223),

Gene: Radiance_11 Start: 7608, Stop: 8417, Start Num: 17

Candidate Starts for Radiance_11:

(4, 7500), (12, 7551), (Start: 17 @7608 has 221 MA's), (18, 7620), (21, 7734), (22, 7758), (23, 7764), (26, 7827), (32, 7941), (33, 7944), (34, 7947), (36, 7977), (38, 7998), (39, 8007), (47, 8061), (58, 8223), (62, 8295), (64, 8316), (70, 8367), (71, 8373),

Gene: Ramsey_12 Start: 7460, Stop: 8269, Start Num: 17

Candidate Starts for Ramsey_12:

(Start: 13 @7403 has 2 MA's), (Start: 17 @7460 has 221 MA's), (18, 7472), (20, 7550), (21, 7586), (22, 7610), (23, 7616), (26, 7679), (31, 7790), (32, 7793), (33, 7796), (34, 7799), (36, 7829), (38, 7850), (39, 7859), (47, 7913), (49, 7940), (58, 8075), (64, 8168), (70, 8219), (71, 8225),

Gene: RedBird_11 Start: 7609, Stop: 8418, Start Num: 17

Candidate Starts for RedBird_11:

(Start: 9 @7537 has 9 MA's), (12, 7552), (Start: 17 @7609 has 221 MA's), (18, 7621), (21, 7735), (22, 7759), (23, 7765), (26, 7828), (32, 7942), (33, 7945), (34, 7948), (36, 7978), (38, 7999), (39, 8008), (46, 8056), (47, 8062), (49, 8089), (58, 8224), (62, 8296), (63, 8299), (64, 8317), (70, 8368), (71, 8374),

Gene: Renaud18_12 Start: 7913, Stop: 8725, Start Num: 17

Candidate Starts for Renaud18_12:

(Start: 17 @7913 has 221 MA's), (20, 8003), (21, 8039), (29, 8228), (31, 8243), (32, 8246), (36, 8282), (40, 8318), (57, 8510), (58, 8528), (64, 8621), (67, 8648), (72, 8705),

Gene: Rialto_12 Start: 7463, Stop: 8272, Start Num: 17

Candidate Starts for Rialto_12:

(Start: 17 @7463 has 221 MA's), (18, 7475), (20, 7553), (21, 7589), (22, 7613), (23, 7619), (26, 7682), (31, 7793), (32, 7796), (33, 7799), (34, 7802), (36, 7832), (38, 7853), (39, 7862), (47, 7916), (58, 8078), (62, 8150), (64, 8171), (70, 8222), (71, 8228),

Gene: Rita_11 Start: 7600, Stop: 8409, Start Num: 17

Candidate Starts for Rita_11:

(Start: 17 @7600 has 221 MA's), (18, 7612), (19, 7681), (21, 7726), (22, 7750), (23, 7756), (26, 7819), (32, 7933), (33, 7936), (36, 7969), (38, 7990), (39, 7999), (47, 8053), (49, 8080), (50, 8086), (58, 8215), (62, 8287), (64, 8308), (70, 8359), (71, 8365),

Gene: RitaG_11 Start: 7534, Stop: 8418, Start Num: 8

Candidate Starts for RitaG_11:

(Start: 8 @7534 has 3 MA's), (Start: 9 @7537 has 9 MA's), (12, 7552), (Start: 17 @7609 has 221 MA's), (18, 7621), (21, 7735), (22, 7759), (23, 7765), (26, 7828), (32, 7942), (33, 7945), (34, 7948), (36, 7978), (38, 7999), (39, 8008), (46, 8056), (47, 8062), (49, 8089), (58, 8224), (62, 8296), (63, 8299), (64, 8317), (70, 8368), (71, 8374),

Gene: Rockne_11 Start: 7626, Stop: 8435, Start Num: 17

Candidate Starts for Rockne_11:

(Start: 17 @7626 has 221 MA's), (18, 7638), (20, 7716), (21, 7752), (22, 7776), (23, 7782), (26, 7845), (32, 7959), (33, 7962), (34, 7965), (36, 7995), (38, 8016), (39, 8025), (47, 8079), (49, 8106), (58, 8241), (62, 8313), (64, 8334), (70, 8385), (71, 8391),

Gene: RockyHorror_12 Start: 7461, Stop: 8270, Start Num: 17

Candidate Starts for RockyHorror_12:

(Start: 17 @7461 has 221 MA's), (18, 7473), (20, 7551), (21, 7587), (22, 7611), (23, 7617), (26, 7680), (32, 7794), (33, 7797), (34, 7800), (36, 7830), (38, 7851), (39, 7860), (46, 7908), (47, 7914), (49, 7941), (58, 8076), (62, 8148), (63, 8151), (64, 8169), (70, 8220), (71, 8226),

Gene: Royals2015_11 Start: 7629, Stop: 8438, Start Num: 17

Candidate Starts for Royals2015_11:

(1, 7431), (2, 7452), (3, 7455), (16, 7590), (Start: 17 @7629 has 221 MA's), (18, 7641), (19, 7710), (20, 7719), (21, 7755), (22, 7779), (23, 7785), (26, 7848), (31, 7959), (32, 7962), (33, 7965), (34, 7968), (36, 7998), (38, 8019), (39, 8028), (47, 8082), (58, 8244), (62, 8316), (64, 8337), (70, 8388), (71, 8394),

Gene: Ruby_11 Start: 7557, Stop: 8423, Start Num: 13

Candidate Starts for Ruby_11:

(Start: 13 @7557 has 2 MA's), (Start: 17 @7614 has 221 MA's), (18, 7626), (20, 7704), (21, 7740), (22, 7764), (23, 7770), (26, 7833), (32, 7947), (33, 7950), (34, 7953), (36, 7983), (38, 8004), (39, 8013), (47, 8067), (48, 8091), (49, 8094), (58, 8229), (62, 8301), (64, 8322), (69, 8355), (70, 8373), (71, 8379),

Gene: Ryadel_51 Start: 24909, Stop: 25724, Start Num: 17

Candidate Starts for Ryadel_51:

(Start: 17 @24909 has 221 MA's), (19, 24990), (26, 25131), (32, 25245), (35, 25263), (37, 25296), (41, 25326), (43, 25338), (45, 25353), (56, 25470), (61, 25596),

Gene: SG4_11 Start: 7559, Stop: 8440, Start Num: 10

Candidate Starts for SG4_11:

(Start: 10 @7559 has 1 MA's), (Start: 17 @7631 has 221 MA's), (18, 7643), (19, 7712), (20, 7721), (21, 7757), (22, 7781), (23, 7787), (26, 7850), (31, 7961), (32, 7964), (33, 7967), (34, 7970), (36, 8000), (38, 8021), (39, 8030), (47, 8084), (58, 8246), (62, 8318), (64, 8339), (70, 8390), (71, 8396),

Gene: Saal_11 Start: 7598, Stop: 8407, Start Num: 17

Candidate Starts for Saal_11:

(Start: 17 @7598 has 221 MA's), (18, 7610), (20, 7688), (21, 7724), (22, 7748), (23, 7754), (26, 7817), (32, 7931), (33, 7934), (34, 7937), (36, 7967), (38, 7988), (39, 7997), (47, 8051), (58, 8213), (64, 8306), (70, 8357), (71, 8363),

Gene: Sabbb_11 Start: 7614, Stop: 8423, Start Num: 17

Candidate Starts for Sabbb_11:

(Start: 13 @7557 has 2 MA's), (Start: 17 @7614 has 221 MA's), (18, 7626), (20, 7704), (21, 7740), (22, 7764), (23, 7770), (26, 7833), (32, 7947), (33, 7950), (34, 7953), (36, 7983), (38, 8004), (39, 8013), (46, 8061), (47, 8067), (49, 8094), (54, 8163), (58, 8229), (62, 8301), (64, 8322), (69, 8355), (70, 8373), (71, 8379),

Gene: Sandalphon_11 Start: 7626, Stop: 8435, Start Num: 17

Candidate Starts for Sandalphon_11:

(Start: 17 @7626 has 221 MA's), (18, 7638), (20, 7716), (21, 7752), (22, 7776), (23, 7782), (26, 7845), (32, 7959), (33, 7962), (34, 7965), (36, 7995), (38, 8016), (39, 8025), (47, 8079), (49, 8106), (58, 8241), (64, 8334), (70, 8385), (71, 8391),

Gene: Sarma624_12 Start: 7460, Stop: 8269, Start Num: 17

Candidate Starts for Sarma624_12:

(Start: 13 @7403 has 2 MA's), (Start: 17 @7460 has 221 MA's), (18, 7472), (21, 7586), (22, 7610), (23, 7616), (26, 7679), (32, 7793), (33, 7796), (34, 7799), (36, 7829), (38, 7850), (39, 7859), (47, 7913), (58, 8075), (64, 8168), (70, 8219), (71, 8225),

Gene: Sassafra_11 Start: 7609, Stop: 8418, Start Num: 17

Candidate Starts for Sassafra_11:

(Start: 9 @7537 has 9 MA's), (12, 7552), (Start: 17 @7609 has 221 MA's), (18, 7621), (21, 7735), (22, 7759), (23, 7765), (26, 7828), (32, 7942), (33, 7945), (34, 7948), (36, 7978), (38, 7999), (39, 8008), (47, 8062), (49, 8089), (58, 8224), (62, 8296), (64, 8317), (69, 8350), (70, 8368), (71, 8374),

Gene: SassyB_11 Start: 7631, Stop: 8440, Start Num: 17

Candidate Starts for SassyB_11:

(Start: 10 @7559 has 1 MA's), (Start: 17 @7631 has 221 MA's), (18, 7643), (19, 7712), (20, 7721), (21, 7757), (22, 7781), (23, 7787), (26, 7850), (31, 7961), (32, 7964), (33, 7967), (34, 7970), (36, 8000), (38, 8021), (39, 8030), (47, 8084), (62, 8318), (64, 8339), (70, 8390), (71, 8396),

Gene: Sbash_12 Start: 8452, Stop: 9249, Start Num: 17

Candidate Starts for Sbash_12:

(6, 8362), (15, 8410), (Start: 17 @8452 has 221 MA's), (19, 8539), (20, 8548), (27, 8683), (28, 8689), (32, 8788), (49, 8935), (57, 9049), (64, 9157), (65, 9163),

Gene: SchoolBus_47 Start: 23859, Stop: 24674, Start Num: 17

Candidate Starts for SchoolBus_47:

(Start: 17 @23859 has 221 MA's), (19, 23940), (26, 24081), (28, 24096), (32, 24195), (35, 24213), (41, 24276), (43, 24288), (45, 24303), (56, 24420), (61, 24546),

Gene: Schuy_45 Start: 23792, Stop: 24607, Start Num: 17

Candidate Starts for Schuy_45:

(Start: 17 @23792 has 221 MA's), (19, 23873), (26, 24014), (28, 24029), (32, 24128), (35, 24146), (41, 24209), (43, 24221), (45, 24236), (56, 24353), (61, 24479),

Gene: Scottish_11 Start: 7609, Stop: 8418, Start Num: 17

Candidate Starts for Scottish_11:

(Start: 9 @7537 has 9 MA's), (12, 7552), (Start: 17 @7609 has 221 MA's), (18, 7621), (21, 7735), (22, 7759), (23, 7765), (26, 7828), (32, 7942), (33, 7945), (34, 7948), (36, 7978), (38, 7999), (39, 8008), (46, 8056), (47, 8062), (49, 8089), (58, 8224), (62, 8296), (63, 8299), (64, 8317), (70, 8368), (71, 8374),

Gene: Seabastian_11 Start: 7607, Stop: 8416, Start Num: 17

Candidate Starts for Seabastian_11:

(Start: 13 @7550 has 2 MA's), (Start: 17 @7607 has 221 MA's), (18, 7619), (20, 7697), (21, 7733), (22, 7757), (23, 7763), (26, 7826), (31, 7937), (32, 7940), (33, 7943), (34, 7946), (36, 7976), (38, 7997), (39, 8006), (46, 8054), (47, 8060), (48, 8084), (58, 8222), (62, 8294), (64, 8315), (70, 8366), (71, 8372),

Gene: Seagreen_12 Start: 7462, Stop: 8271, Start Num: 17

Candidate Starts for Seagreen_12:

(Start: 13 @7405 has 2 MA's), (Start: 17 @7462 has 221 MA's), (18, 7474), (20, 7552), (21, 7588), (22, 7612), (23, 7618), (26, 7681), (31, 7792), (32, 7795), (33, 7798), (34, 7801), (36, 7831), (38, 7852), (39, 7861), (47, 7915), (49, 7942), (58, 8077), (62, 8149), (64, 8170), (70, 8221), (71, 8227),

Gene: Shauna1_11 Start: 7632, Stop: 8441, Start Num: 17

Candidate Starts for Shauna1_11:

(Start: 17 @7632 has 221 MA's), (18, 7644), (19, 7713), (20, 7722), (21, 7758), (22, 7782), (23, 7788), (26, 7851), (31, 7962), (32, 7965), (33, 7968), (34, 7971), (36, 8001), (38, 8022), (39, 8031), (47, 8085), (62, 8319), (64, 8340), (70, 8391), (71, 8397),

Gene: ShiLan_11 Start: 7537, Stop: 8418, Start Num: 9

Candidate Starts for ShiLan_11:

(Start: 9 @7537 has 9 MA's), (12, 7552), (Start: 17 @7609 has 221 MA's), (18, 7621), (20, 7699), (21, 7735), (22, 7759), (23, 7765), (26, 7828), (32, 7942), (33, 7945), (34, 7948), (36, 7978), (38, 7999), (39, 8008), (46, 8056), (47, 8062), (48, 8086), (58, 8224), (62, 8296), (64, 8317), (69, 8350), (70, 8368), (71, 8374),

Gene: Shida_47 Start: 23699, Stop: 24514, Start Num: 17

Candidate Starts for Shida_47:

(Start: 17 @23699 has 221 MA's), (19, 23780), (26, 23921), (28, 23936), (32, 24035), (35, 24053), (41, 24116), (43, 24128), (45, 24143), (56, 24260), (61, 24386),

Gene: ShowerHandel_12 Start: 7610, Stop: 8419, Start Num: 17

Candidate Starts for ShowerHandel_12:

(Start: 9 @7538 has 9 MA's), (12, 7553), (Start: 17 @7610 has 221 MA's), (18, 7622), (20, 7700), (21, 7736), (22, 7760), (23, 7766), (26, 7829), (32, 7943), (33, 7946), (34, 7949), (36, 7979), (38, 8000), (39, 8009), (46, 8057), (47, 8063), (48, 8087), (58, 8225), (62, 8297), (64, 8318), (69, 8351), (70, 8369), (71, 8375),

Gene: ShroomBoi_11 Start: 7631, Stop: 8440, Start Num: 17

Candidate Starts for ShroomBoi_11:

(Start: 10 @7559 has 1 MA's), (Start: 17 @7631 has 221 MA's), (18, 7643), (19, 7712), (20, 7721), (21, 7757), (22, 7781), (23, 7787), (26, 7850), (31, 7961), (32, 7964), (33, 7967), (34, 7970), (36, 8000), (38, 8021), (39, 8030), (47, 8084), (58, 8246), (62, 8318), (64, 8339), (70, 8390), (71, 8396),

Gene: SiSi_11 Start: 7618, Stop: 8427, Start Num: 17

Candidate Starts for SiSi_11:

(Start: 17 @7618 has 221 MA's), (18, 7630), (19, 7699), (20, 7708), (22, 7768), (23, 7774), (26, 7837), (30, 7936), (32, 7951), (33, 7954), (36, 7987), (38, 8008), (39, 8017), (47, 8071), (58, 8233), (62, 8305), (64, 8326), (70, 8377), (71, 8383),

Gene: SimranZ1_12 Start: 7460, Stop: 8269, Start Num: 17

Candidate Starts for SimranZ1_12:

(Start: 17 @7460 has 221 MA's), (18, 7472), (20, 7550), (21, 7586), (22, 7610), (23, 7616), (26, 7679), (31, 7790), (32, 7793), (33, 7796), (34, 7799), (36, 7829), (38, 7850), (39, 7859), (47, 7913), (49, 7940), (58, 8075), (62, 8147), (64, 8168), (70, 8219), (71, 8225),

Gene: Smooch_49 Start: 24987, Stop: 25802, Start Num: 17

Candidate Starts for Smooch_49:

(Start: 17 @24987 has 221 MA's), (19, 25068), (26, 25209), (28, 25224), (32, 25323), (35, 25341), (41, 25404), (43, 25416), (45, 25431), (56, 25548), (61, 25674),

Gene: Sparkdehlily_11 Start: 7624, Stop: 8433, Start Num: 17

Candidate Starts for Sparkdehlily_11:

(Start: 9 @7552 has 9 MA's), (12, 7567), (Start: 17 @7624 has 221 MA's), (18, 7636), (20, 7714), (21, 7750), (22, 7774), (23, 7780), (26, 7843), (32, 7957), (33, 7960), (34, 7963), (36, 7993), (38, 8014), (39, 8023), (47, 8077), (49, 8104), (58, 8239), (62, 8311), (64, 8332), (70, 8383), (71, 8389),

Gene: Spartacus_11 Start: 7617, Stop: 8426, Start Num: 17

Candidate Starts for Spartacus_11:

(Start: 17 @7617 has 221 MA's), (18, 7629), (19, 7698), (20, 7707), (21, 7743), (22, 7767), (23, 7773), (26, 7836), (31, 7947), (32, 7950), (33, 7953), (34, 7956), (36, 7986), (38, 8007), (39, 8016), (47, 8070), (62, 8304), (64, 8325), (70, 8376), (71, 8382),

Gene: Spikelee_12 Start: 7461, Stop: 8270, Start Num: 17

Candidate Starts for Spikelee_12:

(Start: 8 @7386 has 3 MA's), (Start: 9 @7389 has 9 MA's), (12, 7404), (Start: 17 @7461 has 221 MA's), (18, 7473), (20, 7551), (21, 7587), (22, 7611), (23, 7617), (26, 7680), (32, 7794), (33, 7797), (34, 7800), (36, 7830), (38, 7851), (39, 7860), (46, 7908), (47, 7914), (49, 7941), (58, 8076), (62, 8148), (64, 8169), (70, 8220), (71, 8226),

Gene: Spoonbill_11 Start: 7610, Stop: 8419, Start Num: 17

Candidate Starts for Spoonbill_11:

(Start: 13 @7553 has 2 MA's), (Start: 17 @7610 has 221 MA's), (18, 7622), (20, 7700), (21, 7736), (22, 7760), (23, 7766), (26, 7829), (32, 7943), (33, 7946), (34, 7949), (36, 7979), (38, 8000), (39, 8009), (47, 8063), (48, 8087), (49, 8090), (58, 8225), (62, 8297), (64, 8318), (69, 8351), (70, 8369), (71, 8375),

Gene: Squirty_12 Start: 7454, Stop: 8263, Start Num: 17

Candidate Starts for Squirty_12:

(Start: 17 @7454 has 221 MA's), (18, 7466), (20, 7544), (21, 7580), (22, 7604), (23, 7610), (26, 7673), (32, 7787), (33, 7790), (34, 7793), (36, 7823), (38, 7844), (39, 7853), (47, 7907), (58, 8069), (62, 8141), (64, 8162), (68, 8192), (70, 8213), (71, 8219),

Gene: StAnnes_11 Start: 7632, Stop: 8441, Start Num: 17

Candidate Starts for StAnnes_11:

(Start: 17 @7632 has 221 MA's), (18, 7644), (19, 7713), (20, 7722), (22, 7782), (23, 7788), (26, 7851), (32, 7965), (33, 7968), (36, 8001), (38, 8022), (39, 8031), (47, 8085), (58, 8247), (62, 8319), (64, 8340), (70, 8391), (71, 8397),

Gene: Stap_12 Start: 7461, Stop: 8270, Start Num: 17

Candidate Starts for Stap_12:

(4, 7353), (12, 7404), (Start: 17 @7461 has 221 MA's), (18, 7473), (21, 7587), (22, 7611), (23, 7617), (26, 7680), (32, 7794), (33, 7797), (34, 7800), (36, 7830), (38, 7851), (39, 7860), (47, 7914), (58, 8076), (62, 8148), (64, 8169), (70, 8220), (71, 8226),

Gene: Starcevich_12 Start: 7390, Stop: 8271, Start Num: 9

Candidate Starts for Starcevich_12:

(Start: 9 @7390 has 9 MA's), (12, 7405), (Start: 17 @7462 has 221 MA's), (18, 7474), (21, 7588), (22, 7612), (23, 7618), (26, 7681), (32, 7795), (33, 7798), (34, 7801), (36, 7831), (38, 7852), (39, 7861), (47, 7915), (58, 8077), (62, 8149), (64, 8170), (70, 8221), (71, 8227),

Gene: Strokeseat_11 Start: 7599, Stop: 8408, Start Num: 17

Candidate Starts for Strokeseat_11:

(Start: 13 @7542 has 2 MA's), (Start: 17 @7599 has 221 MA's), (18, 7611), (20, 7689), (21, 7725), (22, 7749), (23, 7755), (26, 7818), (31, 7929), (32, 7932), (33, 7935), (34, 7938), (36, 7968), (38, 7989), (39, 7998), (46, 8046), (47, 8052), (48, 8076), (49, 8079), (58, 8214), (62, 8286), (64, 8307), (69, 8340), (70, 8358), (71, 8364),

Gene: SuperGrey_11 Start: 7599, Stop: 8408, Start Num: 17

Candidate Starts for SuperGrey_11:

(Start: 17 @7599 has 221 MA's), (18, 7611), (19, 7680), (21, 7725), (22, 7749), (23, 7755), (26, 7818), (32, 7932), (33, 7935), (36, 7968), (38, 7989), (39, 7998), (47, 8052), (49, 8079), (50, 8085), (58, 8214), (62, 8286), (64, 8307), (70, 8358), (71, 8364),

Gene: SwagPiggett_11 Start: 7610, Stop: 8419, Start Num: 17

Candidate Starts for SwagPiggett_11:

(Start: 9 @7538 has 9 MA's), (12, 7553), (Start: 17 @7610 has 221 MA's), (18, 7622), (20, 7700), (21, 7736), (22, 7760), (23, 7766), (26, 7829), (32, 7943), (33, 7946), (34, 7949), (36, 7979), (38, 8000), (39, 8009), (46, 8057), (47, 8063), (48, 8087), (58, 8225), (62, 8297), (64, 8318), (69, 8351), (70, 8369), (71, 8375),

Gene: TChen_12 Start: 8033, Stop: 8845, Start Num: 17

Candidate Starts for TChen_12:

(Start: 17 @8033 has 221 MA's), (20, 8123), (21, 8159), (29, 8348), (31, 8363), (32, 8366), (40, 8438), (49, 8513), (57, 8630), (58, 8648), (64, 8741), (67, 8768), (72, 8825),

Gene: TDanisky_11 Start: 7624, Stop: 8433, Start Num: 17

Candidate Starts for TDanisky_11:

(Start: 9 @7552 has 9 MA's), (12, 7567), (Start: 17 @7624 has 221 MA's), (18, 7636), (20, 7714), (21, 7750), (22, 7774), (23, 7780), (26, 7843), (32, 7957), (33, 7960), (34, 7963), (36, 7993), (38, 8014), (39, 8023), (47, 8077), (49, 8104), (58, 8239), (62, 8311), (64, 8332), (70, 8383), (71, 8389),

Gene: Taj_11 Start: 7631, Stop: 8440, Start Num: 17

Candidate Starts for Taj_11:

(Start: 17 @7631 has 221 MA's), (18, 7643), (19, 7712), (20, 7721), (21, 7757), (22, 7781), (23, 7787), (26, 7850), (31, 7961), (32, 7964), (33, 7967), (34, 7970), (36, 8000), (38, 8021), (39, 8030), (47, 8084), (58, 8246), (62, 8318), (64, 8339), (70, 8390), (71, 8396),

Gene: TelAviv_44 Start: 23853, Stop: 24668, Start Num: 17

Candidate Starts for TelAviv_44:

(Start: 17 @23853 has 221 MA's), (19, 23934), (26, 24075), (28, 24090), (32, 24189), (35, 24207), (41, 24270), (43, 24282), (45, 24297), (56, 24414), (61, 24540),

Gene: ThetaBob_12 Start: 7916, Stop: 8728, Start Num: 17

Candidate Starts for ThetaBob_12:

(Start: 17 @7916 has 221 MA's), (20, 8006), (21, 8042), (29, 8231), (31, 8246), (32, 8249), (40, 8321), (49, 8396), (57, 8513), (58, 8531), (64, 8624), (67, 8651), (72, 8708),

Gene: TootsiePop_12 Start: 7464, Stop: 8273, Start Num: 17

Candidate Starts for TootsiePop_12:

(Start: 13 @7407 has 2 MA's), (Start: 17 @7464 has 221 MA's), (18, 7476), (20, 7554), (21, 7590), (22, 7614), (23, 7620), (26, 7683), (32, 7797), (33, 7800), (34, 7803), (36, 7833), (38, 7854), (39, 7863), (47, 7917), (49, 7944), (58, 8079), (62, 8151), (64, 8172), (70, 8223), (71, 8229),

Gene: Tootsieroll_12 Start: 7461, Stop: 8270, Start Num: 17

Candidate Starts for Tootsieroll_12:

(4, 7353), (12, 7404), (Start: 17 @7461 has 221 MA's), (18, 7473), (21, 7587), (22, 7611), (23, 7617), (26, 7680), (32, 7794), (33, 7797), (34, 7800), (36, 7830), (38, 7851), (39, 7860), (47, 7914), (58, 8076), (62, 8148), (64, 8169), (70, 8220), (71, 8226),

Gene: Totinger_12 Start: 7463, Stop: 8272, Start Num: 17

Candidate Starts for Totinger_12:

(Start: 17 @7463 has 221 MA's), (18, 7475), (20, 7553), (21, 7589), (22, 7613), (23, 7619), (26, 7682), (31, 7793), (32, 7796), (33, 7799), (34, 7802), (36, 7832), (38, 7853), (39, 7862), (47, 7916), (58, 8078), (62, 8150), (64, 8171), (70, 8222), (71, 8228),

Gene: Tweety_11 Start: 7633, Stop: 8442, Start Num: 17

Candidate Starts for Tweety_11:

(Start: 17 @7633 has 221 MA's), (18, 7645), (19, 7714), (20, 7723), (22, 7783), (23, 7789), (26, 7852), (32, 7966), (33, 7969), (34, 7972), (36, 8002), (38, 8023), (39, 8032), (47, 8086), (58, 8248), (62, 8320), (64, 8341), (70, 8392), (71, 8398),

Gene: UncleRicky_12 Start: 7390, Stop: 8271, Start Num: 9

Candidate Starts for UncleRicky_12:

(Start: 9 @7390 has 9 MA's), (12, 7405), (Start: 17 @7462 has 221 MA's), (18, 7474), (19, 7543), (20, 7552), (21, 7588), (22, 7612), (23, 7618), (26, 7681), (31, 7792), (32, 7795), (33, 7798), (34, 7801), (36, 7831), (38, 7852), (39, 7861), (47, 7915), (62, 8149), (64, 8170), (70, 8221), (71, 8227),

Gene: VRedHorse_11 Start: 7611, Stop: 8420, Start Num: 17

Candidate Starts for VRedHorse_11:

(Start: 17 @7611 has 221 MA's), (18, 7623), (20, 7701), (21, 7737), (22, 7761), (23, 7767), (26, 7830), (32, 7944), (33, 7947), (34, 7950), (36, 7980), (38, 8001), (39, 8010), (46, 8058), (47, 8064), (49, 8091), (58, 8226), (62, 8298), (63, 8301), (64, 8319), (70, 8370), (71, 8376),

Gene: Velveteen_12 Start: 7460, Stop: 8269, Start Num: 17

Candidate Starts for Velveteen_12:

(Start: 13 @7403 has 2 MA's), (Start: 17 @7460 has 221 MA's), (18, 7472), (21, 7586), (22, 7610), (23, 7616), (26, 7679), (32, 7793), (33, 7796), (34, 7799), (36, 7829), (38, 7850), (39, 7859), (47, 7913), (58, 8075), (64, 8168), (70, 8219), (71, 8225),

Gene: Veteran_11 Start: 7625, Stop: 8434, Start Num: 17

Candidate Starts for Veteran_11:

(5, 7517), (12, 7568), (Start: 17 @7625 has 221 MA's), (18, 7637), (19, 7706), (21, 7751), (22, 7775), (23, 7781), (26, 7844), (32, 7958), (33, 7961), (34, 7964), (36, 7994), (38, 8015), (39, 8024), (47, 8078), (58, 8240), (62, 8312), (64, 8333), (70, 8384), (71, 8390),

Gene: Vorrps_46 Start: 23445, Stop: 24260, Start Num: 17

Candidate Starts for Vorrps_46:

(Start: 17 @23445 has 221 MA's), (19, 23526), (26, 23667), (28, 23682), (32, 23781), (35, 23799), (41, 23862), (43, 23874), (45, 23889), (56, 24006), (61, 24132),

Gene: Wachhund_11 Start: 7602, Stop: 8411, Start Num: 17

Candidate Starts for Wachhund_11:

(Start: 13 @7545 has 2 MA's), (Start: 17 @7602 has 221 MA's), (18, 7614), (20, 7692), (21, 7728), (22, 7752), (23, 7758), (26, 7821), (32, 7935), (33, 7938), (34, 7941), (36, 7971), (38, 7992), (39, 8001), (46, 8049), (47, 8055), (49, 8082), (58, 8217), (62, 8289), (64, 8310), (70, 8361), (71, 8367),

Gene: Wee_11 Start: 7631, Stop: 8440, Start Num: 17

Candidate Starts for Wee_11:

(Start: 17 @7631 has 221 MA's), (18, 7643), (19, 7712), (20, 7721), (22, 7781), (23, 7787), (26, 7850), (32, 7964), (33, 7967), (34, 7970), (36, 8000), (38, 8021), (39, 8030), (47, 8084), (58, 8246), (62, 8318), (64, 8339), (70, 8390), (71, 8396),

Gene: Whatsapiecost_11 Start: 7631, Stop: 8440, Start Num: 17

Candidate Starts for Whatsapiecost_11:

(Start: 10 @7559 has 1 MA's), (Start: 17 @7631 has 221 MA's), (18, 7643), (19, 7712), (20, 7721), (21, 7757), (22, 7781), (23, 7787), (26, 7850), (30, 7949), (32, 7964), (33, 7967), (36, 8000), (38, 8021), (39, 8030), (47, 8084), (58, 8246), (62, 8318), (64, 8339), (70, 8390), (71, 8396),

Gene: Whouxphf_11 Start: 7602, Stop: 8411, Start Num: 17

Candidate Starts for Whouxphf_11:

(Start: 13 @7545 has 2 MA's), (Start: 17 @7602 has 221 MA's), (18, 7614), (21, 7728), (22, 7752), (23, 7758), (26, 7821), (32, 7935), (33, 7938), (34, 7941), (36, 7971), (38, 7992), (39, 8001), (47, 8055), (48, 8079), (49, 8082), (58, 8217), (62, 8289), (64, 8310), (70, 8361), (71, 8367),

Gene: Wildflower_45 Start: 23431, Stop: 24246, Start Num: 17

Candidate Starts for Wildflower_45:

(Start: 17 @23431 has 221 MA's), (19, 23512), (26, 23653), (28, 23668), (32, 23767), (35, 23785), (41, 23848), (43, 23860), (45, 23875), (56, 23992), (61, 24118),

Gene: WillSterrel_11 Start: 7617, Stop: 8426, Start Num: 17

Candidate Starts for WillSterrel_11:

(Start: 17 @7617 has 221 MA's), (18, 7629), (19, 7698), (20, 7707), (21, 7743), (22, 7767), (23, 7773), (26, 7836), (31, 7947), (32, 7950), (33, 7953), (34, 7956), (36, 7986), (38, 8007), (39, 8016), (47, 8070), (62, 8304), (64, 8325), (70, 8376), (71, 8382),

Gene: Winget_48 Start: 24125, Stop: 24940, Start Num: 17

Candidate Starts for Winget_48:

(Start: 17 @24125 has 221 MA's), (19, 24206), (26, 24347), (28, 24362), (32, 24461), (35, 24479), (41, 24542), (43, 24554), (45, 24569), (56, 24686), (61, 24812),

Gene: XFactor_11 Start: 7631, Stop: 8440, Start Num: 17

Candidate Starts for XFactor_11:

(Start: 10 @7559 has 1 MA's), (Start: 17 @7631 has 221 MA's), (18, 7643), (19, 7712), (20, 7721), (21, 7757), (22, 7781), (23, 7787), (26, 7850), (31, 7961), (32, 7964), (33, 7967), (34, 7970), (36, 8000), (38, 8021), (39, 8030), (47, 8084), (58, 8246), (62, 8318), (64, 8339), (70, 8390), (71, 8396),

Gene: Xula_12 Start: 8498, Stop: 9298, Start Num: 17

Candidate Starts for Xula_12:

(Start: 14 @8447 has 1 MA's), (Start: 17 @8498 has 221 MA's), (20, 8594), (23, 8657), (28, 8735), (32, 8834), (36, 8870), (59, 9146), (64, 9206), (65, 9212),

Gene: Yorick_11 Start: 7608, Stop: 8417, Start Num: 17

Candidate Starts for Yorick_11:

(Start: 9 @7536 has 9 MA's), (12, 7551), (Start: 17 @7608 has 221 MA's), (18, 7620), (20, 7698), (21, 7734), (22, 7758), (23, 7764), (26, 7827), (32, 7941), (33, 7944), (34, 7947), (36, 7977), (38, 7998), (39, 8007), (46, 8055), (47, 8061), (49, 8088), (58, 8223), (62, 8295), (64, 8316), (69, 8349), (70, 8367), (71, 8373),

Gene: YungJamal_50 Start: 24164, Stop: 24979, Start Num: 17

Candidate Starts for YungJamal_50:

(Start: 17 @24164 has 221 MA's), (19, 24245), (26, 24386), (28, 24401), (32, 24500), (35, 24518), (41, 24581), (43, 24593), (45, 24608), (56, 24725), (61, 24851),

Gene: Zakhe101_47 Start: 23575, Stop: 24390, Start Num: 17

Candidate Starts for Zakhe101_47:

(Start: 17 @23575 has 221 MA's), (19, 23656), (26, 23797), (28, 23812), (32, 23911), (35, 23929), (41, 23992), (43, 24004), (45, 24019), (56, 24136), (61, 24262),

Gene: Zerg_11 Start: 7611, Stop: 8420, Start Num: 17

Candidate Starts for Zerg_11:

(Start: 17 @7611 has 221 MA's), (18, 7623), (20, 7701), (21, 7737), (22, 7761), (23, 7767), (26, 7830), (32, 7944), (33, 7947), (34, 7950), (36, 7980), (38, 8001), (39, 8010), (47, 8064), (49, 8091), (58, 8226), (64, 8319), (70, 8370), (71, 8376),

Gene: Zizzle_11 Start: 7612, Stop: 8421, Start Num: 17

Candidate Starts for Zizzle_11:

(Start: 9 @7540 has 9 MA's), (12, 7555), (Start: 17 @7612 has 221 MA's), (18, 7624), (20, 7702), (21, 7738), (22, 7762), (23, 7768), (26, 7831), (32, 7945), (33, 7948), (34, 7951), (36, 7981), (38, 8002), (39, 8011), (46, 8059), (47, 8065), (48, 8089), (58, 8227), (62, 8299), (64, 8320), (69, 8353), (70, 8371), (71, 8377),