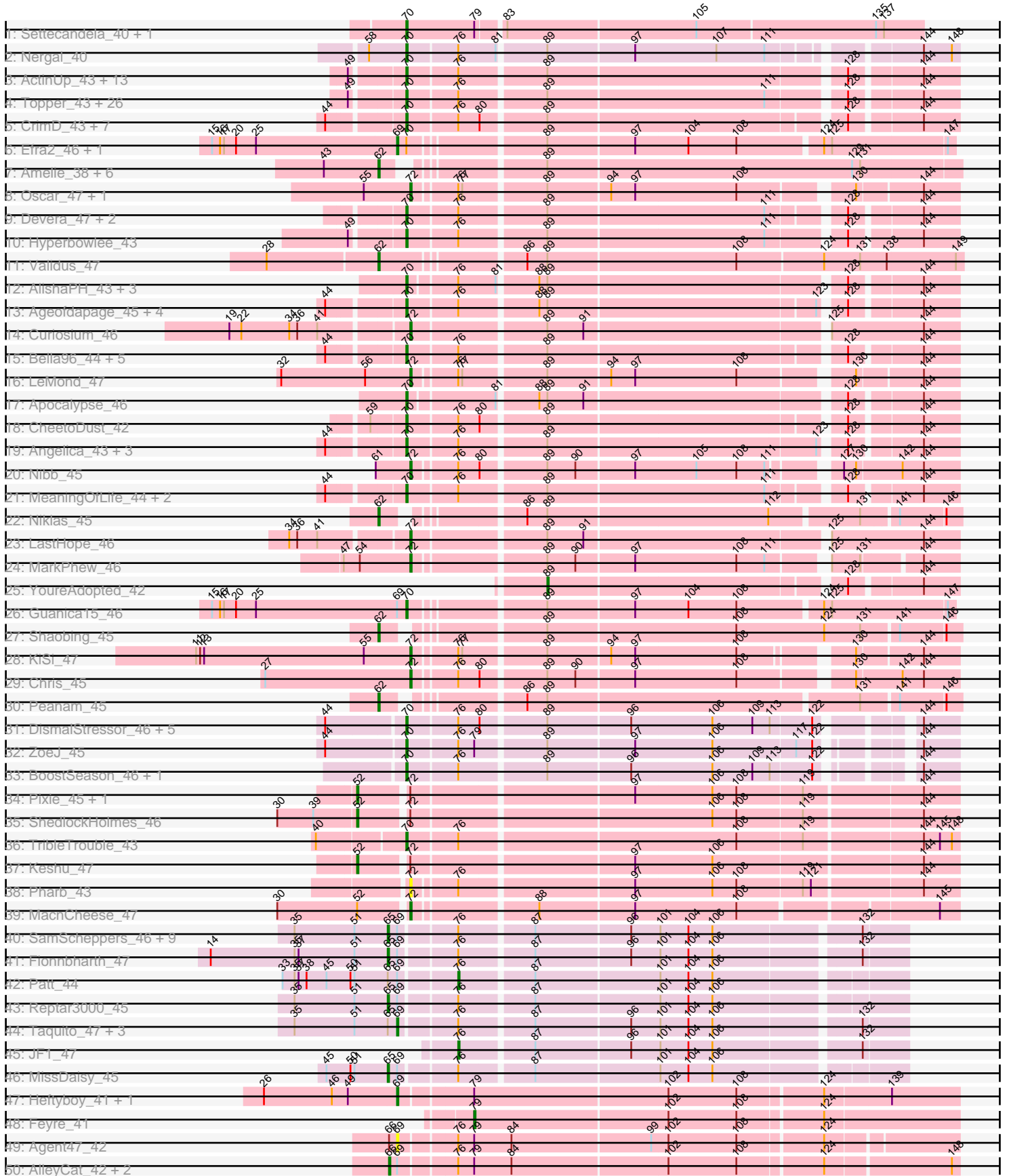
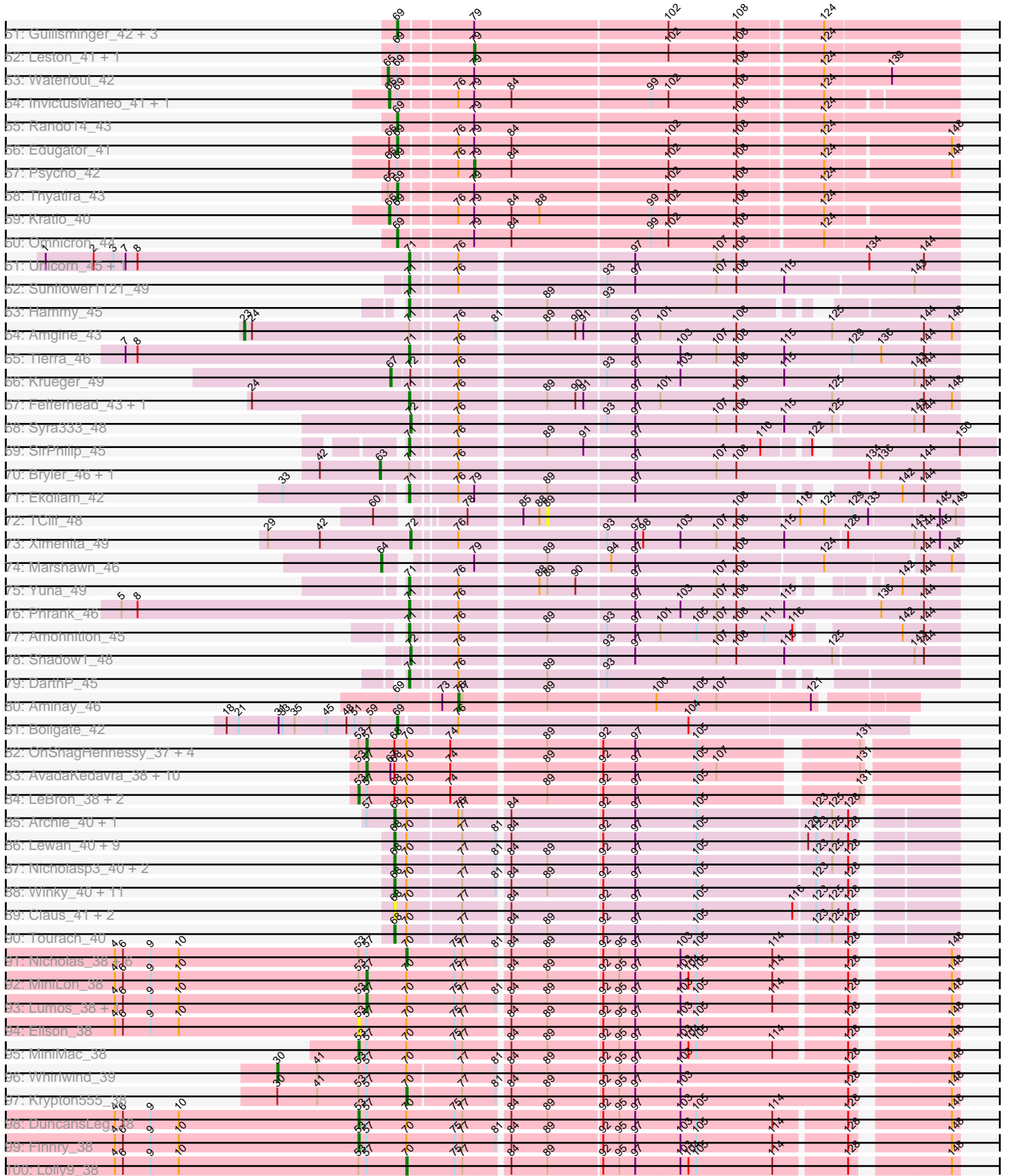


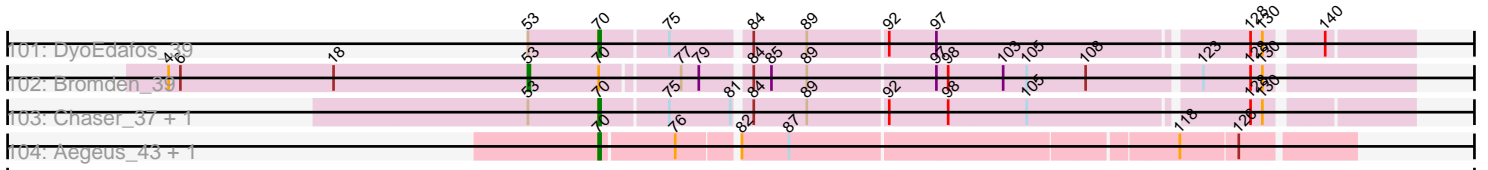
Pham 157546



Pham 157546



Pham 157546



Note: Tracks are now grouped by subcluster and scaled. Switching in subcluster is indicated by changes in track color. Track scale is now set by default to display the region 30 bp upstream of start 1 to 30 bp downstream of the last possible start. If this default region is judged to be packed too tightly with annotated starts, the track will be further scaled to only show that region of the ORF with annotated starts. This action will be indicated by adding "Zoomed" to the title. For starts, yellow indicates the location of called starts comprised solely of Glimmer/GeneMark auto-annotations, green indicates the location of called starts with at least 1 manual gene annotation.

Pham 157546 Report

This analysis was run 04/13/24 on database version 558.

Pham number 157546 has 258 members, 17 are drafts.

Phages represented in each track:

- Track 1 : Settecandela_40, Phrappuccino_40
- Track 2 : Nergal_40
- Track 3 : ActinUp_43, Jayhawk_44, BarrelRoll_43, Ramen_43, Adephagia_43, Slimphazie_43, Atiba_43, TruffulaTree_43, Veliki_43, Rapunzel97_43, HedwigODU_43, Tachez_43, Emerson_44, Padpat_44
- Track 4 : Topper_43, Padfoot_43, Dalmuri_43, CaseJules_44, Jeckyll_43, Llorens_43, Rosmarinus_43, CREW_43, Boiiii_43, Joy99_43, Asayake_43, Blizzard_43, Belladonna_43, BEEST_43, Homura_43, Inky_43, Spock_43, JAWS_43, Lunahalos_43, Capricorn_43, ShiaSurprise_44, Durfee_43, Piatt_43, BGIlluviae_43, Jarvi_43, Peel_43, Twitch_43
- Track 5 : CrimD_43, Megsy_46, LindNT_43, Zavala_44, Prithvi_44, Mynx_44, TreyKay_44, TaiwanKao_45
- Track 6 : Efra2_46, Yunkel11_46
- Track 7 : Amelie_38, Binglebops_38, Nikao_41, SgtBeansprout_38, Mdavu_39, Nutello_38, Enkosi_41
- Track 8 : Oscar_47, Scarlett_47
- Track 9 : Devera_47, Illumine_46, Dole_46
- Track 10 : Hyperbowlee_43
- Track 11 : Validus_47
- Track 12 : AlishaPH_43, BaghaKamala_42, Geraldini_45, Pokerus_42
- Track 13 : Ageofdapage_45, Adonis_43, LaterM_44, Stinson_44, Murucutumbu_44
- Track 14 : Curiosium_46
- Track 15 : Bella96_44, Beezoo_45, Urkel_44, SamuelLPlaqson_44, TiniBug_44, DrHayes_44
- Track 16 : LeMond_47
- Track 17 : Apocalypse_46
- Track 18 : CheetoDust_42
- Track 19 : Angelica_43, Anaya_45, Deby_43, Sulley_43
- Track 20 : Nibb_45
- Track 21 : MeaningOfLife_44, Ganymede_44, QuincyRose_42
- Track 22 : Niklas_45
- Track 23 : LastHope_46
- Track 24 : MarkPhew_46
- Track 25 : YoureAdopted_42
- Track 26 : Guanica15_46
- Track 27 : Shaobing_45
- Track 28 : KiSi_47

- Track 29 : Chris_45
- Track 30 : Peanam_45
- Track 31 : DismalStressor_46, Findley_46, Strobilo_50, Marcoliusprime_46, Milly_46, DismalFunk_46
- Track 32 : ZoeJ_45
- Track 33 : BoostSeason_46, Mufasa_46
- Track 34 : Pixie_45, TBond007_45
- Track 35 : ShedlockHolmes_46
- Track 36 : TribbleTrouble_43
- Track 37 : Keshu_47
- Track 38 : Pharb_43
- Track 39 : MacnCheese_47
- Track 40 : SamScheppers_46, Chancellor_47, Juliette_49, Slarp_47, Wintermute_47, Cheetobro_47, Eponine_49, Malthus_48, Mitti_47, Ruthiejr_48
- Track 41 : Fionnbharth_47
- Track 42 : Patt_44
- Track 43 : Reptar3000_45
- Track 44 : Taquito_47, Y2_46, Y10_46, OmniCritical_46
- Track 45 : JF1_47
- Track 46 : MissDaisy_45
- Track 47 : Heftyboy_41, SoSeph_41
- Track 48 : Feyre_41
- Track 49 : Agent47_42
- Track 50 : AlleyCat_42, Larva_42, Dadosky_42
- Track 51 : Guillsminger_42, Gengar_41, OkiRoe_41, Paola_41
- Track 52 : Leston_41, Miryou_44
- Track 53 : Waterfoul_42
- Track 54 : InvictusManeo_41, Collard_41
- Track 55 : Rando14_43
- Track 56 : Edugator_41
- Track 57 : Psycho_42
- Track 58 : Thyatira_43
- Track 59 : Kratio_40
- Track 60 : Omnicron_44
- Track 61 : Unicorn_45, PhelpsODU_45
- Track 62 : Sunflower1121_49
- Track 63 : Hammy_45
- Track 64 : Amgine_43
- Track 65 : Tierra_46
- Track 66 : Krueger_49
- Track 67 : Fefferhead_43, Ellie_41
- Track 68 : Syra333_48
- Track 69 : SirPhilip_45
- Track 70 : Bryler_46, Cain_46
- Track 71 : Ekdilam_42
- Track 72 : TClif_48
- Track 73 : Ximenita_49
- Track 74 : Marshawn_46
- Track 75 : Yuna_49
- Track 76 : Phrank_46
- Track 77 : Amohnition_45
- Track 78 : Shadow1_48
- Track 79 : DarthP_45

- Track 80 : Aminay_46
- Track 81 : Boilgate_42
- Track 82 : OhShagHennessy_37, DirkDirk_37, Wamburgxpress_38, Enceladus_37, Appletree2_37
- Track 83 : AvadaKedavra_38, Calm_38, Tyson_37, Rose5_37, CicholasNage_38, Halena_37, Wyatt2_38, MAckerman_37, Zaria_38, Acquire49_38, Silverleaf_37
- Track 84 : LeBron_38, UPIE_38, JoeDirt_37
- Track 85 : Archie_40, Bazzle_40
- Track 86 : Lewan_40, Kahlid_40, Hafay_40, Crossroads_40, Loadrie_40, GuuelaD_40, Wilder_40, MkaliMitinis3_40, Wigglewiggle_40, Zakai_40
- Track 87 : Nicholasp3_40, Finemlucis_40, Gardann_40
- Track 88 : Winky_40, Gabriela_40, Rumpelstiltskin_40, BobsGarage_40, Netyap_40, Breezona_40, LilDestine_40, Faith1_40, Vetrix_40, Miley16_40, BigCheese_40, DrSeegs_40
- Track 89 : Claus_41, Baoshan_39, ZhongYanYuan_39
- Track 90 : Tourach_40
- Track 91 : Nicholas_38, Jubie_38, Snenia_38, Moostard_38, Clautastrophe_38, Bellis_38, MsGreen_38
- Track 92 : MiniLon_38
- Track 93 : Lumos_38, Kingsolomon_38
- Track 94 : Ellson_38
- Track 95 : MiniMac_38
- Track 96 : Whirlwind_39
- Track 97 : Krypton555_38
- Track 98 : DuncansLeg_38
- Track 99 : Finnry_38
- Track 100 : Lolly9_38
- Track 101 : DyoEdafos_39
- Track 102 : Bromden_39
- Track 103 : Chaser_37, Douge_37
- Track 104 : Aegeus_43, Baudelaire_43

Summary of Final Annotations (See graph section above for start numbers):

The start number called the most often in the published annotations is 70, it was called in 98 of the 241 non-draft genes in the pham.

Genes that call this "Most Annotated" start:

- ActinUp_43, Adephagia_43, Adonis_43, Aegeus_43, Ageofdapage_45, AlishaPH_43, Anaya_45, Angelica_43, Apocalypse_46, Asayake_43, Atiba_43, BEEST_43, BGlluviae_43, BaghaKamala_42, BarrelRoll_43, Baudelaire_43, Beezoo_45, Bella96_44, Belladonna_43, Bellis_38, Blizzard_43, Boiiii_43, BoostSeason_46, CREW_43, Capricorn_43, CaseJules_44, Chaser_37, CheetoDust_42, Clautastrophe_38, CrimD_43, Dalmuri_43, Deby_43, Devera_47, DismalFunk_46, DismalStressor_46, Dole_46, Douge_37, DrHayes_44, Durfee_43, DyoEdafos_39, Emerson_44, Findley_46, Ganymede_44, Geraldini_45, Guanica15_46, HedwigODU_43, Homura_43, Hyperbowlee_43, Illumine_46, Inky_43, JAWS_43, Jarvi_43, Jayhawk_44, Jeckyll_43, Joy99_43, Jubie_38, Krypton555_38, LaterM_44, LindNT_43, Llorens_43, Lolly9_38, Lunahalos_43, Marcoliusprime_46, MeaningOfLife_44, Megsy_46, Milly_46, Moostard_38,

MsGreen_38, Mufasa_46, Murucutumbu_44, Mynx_44, Nergal_40, Nicholas_38, Padfoot_43, Padpat_44, Peel_43, Phrappuccino_40, Piatt_43, Pokerus_42, Prithvi_44, QuincyRose_42, Ramen_43, Rapunzel97_43, Rosmarinus_43, SamuelLPlaqson_44, Settecandela_40, ShiaSurprise_44, Slimphazie_43, Snenia_38, Spock_43, Stinson_44, Strobilo_50, Sulley_43, Tachez_43, TaiwanKao_45, TiniBug_44, Topper_43, TreyKay_44, TribbleTrouble_43, TruffulaTree_43, Twitch_43, Urkel_44, Veliki_43, Zavala_44, ZoeJ_45,

Genes that have the "Most Annotated" start but do not call it:

- Acquire49_38, Appletree2_37, Archie_40, AvadaKedavra_38, Baoshan_39, Bazzle_40, BigCheese_40, BobsGarage_40, Breezona_40, Bromden_39, Calm_38, CicholasNage_38, Claus_41, Crossroads_40, DirkDirk_37, DrSeegs_40, DuncansLeg_38, Efra2_46, Ellson_38, Enceladus_37, Faith1_40, Finemlucis_40, Finnry_38, Gabriela_40, Gardann_40, GuuelaD_40, Hafay_40, Halena_37, JoeDirt_37, Kahlid_40, Kingsolomon_38, LeBron_38, Lewan_40, LilDestine_40, Loadrie_40, Lumos_38, MAckerman_37, Miley16_40, MiniLon_38, MiniMac_38, MkaliMitinis3_40, Netyap_40, Nicholasp3_40, OhShagHennessy_37, Rose5_37, Rumpelstiltskin_40, Silverleaf_37, Tourach_40, Tyson_37, UPIE_38, Vetrix_40, Wamburgrxpress_38, Whirlwind_39, Wigglewiggle_40, Wilder_40, Winky_40, Wyatt2_38, Yunkel11_46, Zakai_40, Zaria_38, ZhongYanYuan_39,

Genes that do not have the "Most Annotated" start:

- Agent47_42, AlleyCat_42, Amelie_38, Amgine_43, Aminay_46, Amohnition_45, Biglebops_38, Boilgate_42, Bryler_46, Cain_46, Chancellor_47, Cheetobro_47, Chris_45, Collard_41, Curiosium_46, Dadosky_42, DarthP_45, Edugator_41, Ekdilam_42, Ellie_41, Enkosi_41, Eponine_49, Fefferhead_43, Feyre_41, Fionnbharth_47, Gengar_41, Guillsminger_42, Hammy_45, Heftyboy_41, InvictusManeo_41, JF1_47, Juliette_49, Keshu_47, KiSi_47, Kratio_40, Krueger_49, Larva_42, LastHope_46, LeMond_47, Leston_41, MacnCheese_47, Malthus_48, MarkPhew_46, Marshawn_46, Mdavu_39, Miryou_44, MissDaisy_45, Mitti_47, Nibb_45, Nikao_41, Niklas_45, Nutello_38, OkiRoe_41, OmniCritical_46, Omnicron_44, Oscar_47, Paola_41, Patt_44, Peanam_45, Pharb_43, PhelpsODU_45, Phrank_46, Pixie_45, Psycho_42, Rando14_43, Reptar3000_45, Ruthiejr_48, SamScheppers_46, Scarlett_47, SgtBeansprout_38, Shadow1_48, Shaobing_45, ShedlockHolmes_46, SirPhilip_45, Slarp_47, SoSeph_41, Sunflower1121_49, Syra333_48, TBond007_45, TClif_48, Taquito_47, Thyatira_43, Tierra_46, Unicorn_45, Validus_47, Waterfoul_42, Wintermute_47, Ximenita_49, Y10_46, Y2_46, YoureAdopted_42, Yuna_49,

Summary by start number:

Start 23:

- Found in 1 of 258 (0.4%) of genes in pham
- Manual Annotations of this start: 1 of 241
- Called 100.0% of time when present
- Phage (with cluster) where this start called: Amgine_43 (K6),

Start 30:

- Found in 4 of 258 (1.6%) of genes in pham
- Manual Annotations of this start: 1 of 241
- Called 25.0% of time when present
- Phage (with cluster) where this start called: Whirlwind_39 (L3),

Start 52:

- Found in 5 of 258 (1.9%) of genes in pham
- Manual Annotations of this start: 4 of 241
- Called 80.0% of time when present
- Phage (with cluster) where this start called: Keshu_47 (K3), Pixie_45 (K3), ShedlockHolmes_46 (K3), TBond007_45 (K3),

Start 53:

- Found in 40 of 258 (15.5%) of genes in pham
- Manual Annotations of this start: 7 of 241
- Called 20.0% of time when present
- Phage (with cluster) where this start called: Bromden_39 (L4), DuncansLeg_38 (L3), Ellson_38 (L3), Finnry_38 (L3), JoeDirt_37 (L1), LeBron_38 (L1), MiniMac_38 (L3), UPIE_38 (L1),

Start 57:

- Found in 38 of 258 (14.7%) of genes in pham
- Manual Annotations of this start: 18 of 241
- Called 50.0% of time when present
- Phage (with cluster) where this start called: Acquire49_38 (L1), Appletree2_37 (L1), AvadaKedavra_38 (L1), Calm_38 (L1), CicholasNage_38 (L1), DirkDirk_37 (L1), Enceladus_37 (L1), Halena_37 (L1), Kingsolomon_38 (L3), Lumos_38 (L3), MAckerman_37 (L1), MiniLon_38 (L3), OhShagHennessy_37 (L1), Rose5_37 (L1), Silverleaf_37 (L1), Tyson_37 (L1), Wamburggrxpress_38 (L1), Wyatt2_38 (L1), Zaria_38 (L1),

Start 62:

- Found in 11 of 258 (4.3%) of genes in pham
- Manual Annotations of this start: 11 of 241
- Called 100.0% of time when present
- Phage (with cluster) where this start called: Amelie_38 (K1), Binglebops_38 (K1), Enkosi_41 (K1), Mdavu_39 (K1), Nikao_41 (K1), Niklas_45 (K1), Nutello_38 (K1), Peanam_45 (K1), SgtBeansprout_38 (K1), Shaobing_45 (K1), Validus_47 (K1),

Start 63:

- Found in 2 of 258 (0.8%) of genes in pham
- Manual Annotations of this start: 2 of 241
- Called 100.0% of time when present
- Phage (with cluster) where this start called: Bryler_46 (K6), Cain_46 (K6),

Start 64:

- Found in 1 of 258 (0.4%) of genes in pham
- Manual Annotations of this start: 1 of 241
- Called 100.0% of time when present
- Phage (with cluster) where this start called: Marshawn_46 (K6),

Start 65:

- Found in 20 of 258 (7.8%) of genes in pham
- Manual Annotations of this start: 14 of 241
- Called 70.0% of time when present
- Phage (with cluster) where this start called: Chancellor_47 (K4), Cheetobro_47 (K4), Eponine_49 (K4), Fionnbharth_47 (K4), Juliette_49 (K4), Malthus_48 (K4), MissDaisy_45 (K4), Mitti_47 (K4), Reptar3000_45 (K4), Ruthiejr_48 (K4),

SamScheppers_46 (K4), Slarp_47 (K4), Waterfoul_42 (K5), Wintermute_47 (K4),

Start 66:

- Found in 9 of 258 (3.5%) of genes in pham
- Manual Annotations of this start: 6 of 241
- Called 66.7% of time when present
- Phage (with cluster) where this start called: AlleyCat_42 (K5), Collard_41 (K5), Dadosky_42 (K5), InvictusManeo_41 (K5), Kratio_40 (K5), Larva_42 (K5),

Start 67:

- Found in 12 of 258 (4.7%) of genes in pham
- Manual Annotations of this start: 1 of 241
- Called 8.3% of time when present
- Phage (with cluster) where this start called: Krueger_49 (K6),

Start 68:

- Found in 50 of 258 (19.4%) of genes in pham
- Manual Annotations of this start: 27 of 241
- Called 62.0% of time when present
- Phage (with cluster) where this start called: Archie_40 (L2), Baoshan_39 (L2), Bazzle_40 (L2), BigCheese_40 (L2), BobsGarage_40 (L2), Breezona_40 (L2), Claus_41 (L2), Crossroads_40 (L2), DrSeegs_40 (L2), Faith1_40 (L2), Finemlucis_40 (L2), Gabriela_40 (L2), Gardann_40 (L2), GuuelaD_40 (L2), Hafay_40 (L2), Kahlid_40 (L2), Lewan_40 (L2), LilDestine_40 (L2), Loadrie_40 (L2), Miley16_40 (L2), MkaliMitinis3_40 (L2), Netyap_40 (L2), Nicholasp3_40 (L2), Rumpelstiltskin_40 (L2), Tourach_40 (L2), Vetrix_40 (L2), Wigglewiggle_40 (L2), Wilder_40 (L2), Winky_40 (L2), Zakai_40 (L2), ZhongYanYuan_39 (L2),

Start 69:

- Found in 44 of 258 (17.1%) of genes in pham
- Manual Annotations of this start: 17 of 241
- Called 40.9% of time when present
- Phage (with cluster) where this start called: Agent47_42 (K5), Boilgate_42 (K8), Edugator_41 (K5), Efra2_46 (K1), Gengar_41 (K5), Guillsminger_42 (K5), Heftyboy_41 (K5), OkiRoe_41 (K5), OmniCritical_46 (K4), Omnicron_44 (K5), Paola_41 (K5), Rando14_43 (K5), SoSeph_41 (K5), Taquito_47 (K4), Thyatira_43 (K5), Y10_46 (K4), Y2_46 (K4), Yunkel11_46 (K1),

Start 70:

- Found in 166 of 258 (64.3%) of genes in pham
- Manual Annotations of this start: 98 of 241
- Called 63.3% of time when present
- Phage (with cluster) where this start called: ActinUp_43 (K1), Adephagia_43 (K1), Adonis_43 (K1), Aegeus_43 (L5), Ageofdapage_45 (K1), AlishaPH_43 (K1), Anaya_45 (K1), Angelica_43 (K1), Apocalypse_46 (K1), Asayake_43 (K1), Atiba_43 (K1), BEEST_43 (K1), BGlluviae_43 (K1), BaghaKamala_42 (K1), BarrelRoll_43 (K1), Baudelaire_43 (L5), Beezoo_45 (K1), Bella96_44 (K1), Belladonna_43 (K1), Bellis_38 (L3), Blizzard_43 (K1), Boiii_43 (K1), BoostSeason_46 (K2), CREW_43 (K1), Capricorn_43 (K1), CaseJules_44 (K1), Chaser_37 (L4), CheetoDust_42 (K1), Clautastrophe_38 (L3), CrimD_43 (K1), Dalmuri_43 (K1), Deby_43 (K1), Devera_47 (K1), DismalFunk_46 (K2), DismalStressor_46 (K2), Dole_46 (K1), Douge_37 (L4), DrHayes_44 (K1), Durfee_43 (K1), DyoEdafos_39 (L4), Emerson_44 (K1), Findley_46 (K2), Ganymede_44 (K1), Geraldini_45 (K1), Guanica15_46 (K1),

HedwigODU_43 (K1), Homura_43 (K1), Hyperbowlee_43 (K1), Illumine_46 (K1), Inky_43 (K1), JAWS_43 (K1), Jarvi_43 (K1), Jayhawk_44 (K1), Jeckyll_43 (K1), Joy99_43 (K1), Jubie_38 (L3), Krypton555_38 (L3), LaterM_44 (K1), LindNT_43 (K1), Llorens_43 (K1), Lolly9_38 (L3), Lunahalos_43 (K1), Marcoliusprime_46 (K2), MeaningOfLife_44 (K1), Megsy_46 (K1), Milly_46 (K2), Moostard_38 (L3), MsGreen_38 (L3), Mufasa_46 (K2), Murucutumbu_44 (K1), Mynx_44 (K1), Nergal_40 (AG), Nicholas_38 (L3), Padfoot_43 (K1), Padpat_44 (K1), Peel_43 (K1), Phrappuccino_40 (AA), Piatt_43 (K1), Pokerus_42 (K1), Prithvi_44 (K1), QuincyRose_42 (K1), Ramen_43 (K1), Rapunzel97_43 (K1), Rosmarinus_43 (K1), SamuelLPlaqson_44 (K1), Settecandela_40 (AA), ShiaSurprise_44 (K1), Slimphazie_43 (K1), Snenia_38 (L3), Spock_43 (K1), Stinson_44 (K1), Strobilo_50 (K2), Sulley_43 (K1), Tachez_43 (K1), TaiwanKao_45 (K1), TiniBug_44 (K1), Topper_43 (K1), TreyKay_44 (K1), TribbleTrouble_43 (K3), TruffulaTree_43 (K1), Twitch_43 (K1), Urkel_44 (K1), Veliki_43 (K1), Zavala_44 (K1), ZoeJ_45 (K2),

Start 71:

- Found in 16 of 258 (6.2%) of genes in pham
- Manual Annotations of this start: 13 of 241
- Called 81.2% of time when present
- Phage (with cluster) where this start called: Amohnition_45 (K6), DARTH_P_45 (K6), Ekdilam_42 (K6), Ellie_41 (K6), Fefferhead_43 (K6), Hammy_45 (K6), PhelpsODU_45 (K6), Phrank_46 (K6), SirPhilip_45 (K6), Sunflower1121_49 (K6), Tierra_46 (K6), Unicorn_45 (K6), Yuna_49 (K6),

Start 72:

- Found in 19 of 258 (7.4%) of genes in pham
- Manual Annotations of this start: 13 of 241
- Called 73.7% of time when present
- Phage (with cluster) where this start called: Chris_45 (K1), Curiosium_46 (K1), KiSi_47 (K1), LastHope_46 (K1), LeMond_47 (K1), MacnCheese_47 (K3), MarkPhew_46 (K1), Nibb_45 (K1), Oscar_47 (K1), Pharb_43 (K3), Scarlett_47 (K1), Shadow1_48 (K6), Syra333_48 (K6), Ximenita_49 (K6),

Start 76:

- Found in 147 of 258 (57.0%) of genes in pham
- Manual Annotations of this start: 3 of 241
- Called 2.0% of time when present
- Phage (with cluster) where this start called: Aminay_46 (K7), JF1_47 (K4), Patt_44 (K4),

Start 79:

- Found in 28 of 258 (10.9%) of genes in pham
- Manual Annotations of this start: 3 of 241
- Called 14.3% of time when present
- Phage (with cluster) where this start called: Feyre_41 (K5), Leston_41 (K5), Miryou_44 (K5), Psycho_42 (K5),

Start 89:

- Found in 179 of 258 (69.4%) of genes in pham
- Manual Annotations of this start: 1 of 241
- Called 1.1% of time when present
- Phage (with cluster) where this start called: TClif_48 (K6), YoureAdopted_42 (K1),

Summary by clusters:

There are 15 clusters represented in this pham: AA, AG, L1, L4, K3, K2, K1, L5, L2, L3, K5, K4, K7, K8, K6,

Info for manual annotations of cluster AA:

- Start number 70 was manually annotated 2 times for cluster AA.

Info for manual annotations of cluster AG:

- Start number 70 was manually annotated 1 time for cluster AG.

Info for manual annotations of cluster K1:

- Start number 62 was manually annotated 11 times for cluster K1.
- Start number 69 was manually annotated 2 times for cluster K1.
- Start number 70 was manually annotated 74 times for cluster K1.
- Start number 72 was manually annotated 9 times for cluster K1.
- Start number 89 was manually annotated 1 time for cluster K1.

Info for manual annotations of cluster K2:

- Start number 70 was manually annotated 8 times for cluster K2.

Info for manual annotations of cluster K3:

- Start number 52 was manually annotated 4 times for cluster K3.
- Start number 70 was manually annotated 1 time for cluster K3.
- Start number 72 was manually annotated 1 time for cluster K3.

Info for manual annotations of cluster K4:

- Start number 65 was manually annotated 13 times for cluster K4.
- Start number 69 was manually annotated 4 times for cluster K4.
- Start number 76 was manually annotated 2 times for cluster K4.

Info for manual annotations of cluster K5:

- Start number 65 was manually annotated 1 time for cluster K5.
- Start number 66 was manually annotated 6 times for cluster K5.
- Start number 69 was manually annotated 10 times for cluster K5.
- Start number 79 was manually annotated 3 times for cluster K5.

Info for manual annotations of cluster K6:

- Start number 23 was manually annotated 1 time for cluster K6.
- Start number 63 was manually annotated 2 times for cluster K6.
- Start number 64 was manually annotated 1 time for cluster K6.
- Start number 67 was manually annotated 1 time for cluster K6.
- Start number 71 was manually annotated 13 times for cluster K6.
- Start number 72 was manually annotated 3 times for cluster K6.

Info for manual annotations of cluster K7:

- Start number 76 was manually annotated 1 time for cluster K7.

Info for manual annotations of cluster K8:

- Start number 69 was manually annotated 1 time for cluster K8.

Info for manual annotations of cluster L1:

- Start number 53 was manually annotated 3 times for cluster L1.

- Start number 57 was manually annotated 15 times for cluster L1.

Info for manual annotations of cluster L2:

- Start number 68 was manually annotated 27 times for cluster L2.

Info for manual annotations of cluster L3:

- Start number 30 was manually annotated 1 time for cluster L3.
- Start number 53 was manually annotated 3 times for cluster L3.
- Start number 57 was manually annotated 3 times for cluster L3.
- Start number 70 was manually annotated 8 times for cluster L3.

Info for manual annotations of cluster L4:

- Start number 53 was manually annotated 1 time for cluster L4.
- Start number 70 was manually annotated 2 times for cluster L4.

Info for manual annotations of cluster L5:

- Start number 70 was manually annotated 2 times for cluster L5.

Gene Information:

Gene: Acquire49_38 Start: 32935, Stop: 32525, Start Num: 57

Candidate Starts for Acquire49_38:

(Start: 53 @32941 has 7 MA's), (Start: 57 @32935 has 18 MA's), (Start: 67 @32917 has 1 MA's), (Start: 68 @32914 has 27 MA's), (Start: 70 @32905 has 98 MA's), (74, 32872), (Start: 89 @32806 has 1 MA's), (92, 32767), (97, 32743), (105, 32698), (107, 32683), (131, 32590),

Gene: ActinUp_43 Start: 34981, Stop: 34601, Start Num: 70

Candidate Starts for ActinUp_43:

(49, 35017), (Start: 70 @34981 has 98 MA's), (Start: 76 @34945 has 3 MA's), (Start: 89 @34885 has 1 MA's), (128, 34675), (144, 34627),

Gene: Adephagia_43 Start: 34978, Stop: 34598, Start Num: 70

Candidate Starts for Adephagia_43:

(49, 35014), (Start: 70 @34978 has 98 MA's), (Start: 76 @34942 has 3 MA's), (Start: 89 @34882 has 1 MA's), (128, 34672), (144, 34624),

Gene: Adonis_43 Start: 35277, Stop: 34897, Start Num: 70

Candidate Starts for Adonis_43:

(44, 35328), (Start: 70 @35277 has 98 MA's), (Start: 76 @35241 has 3 MA's), (88, 35187), (Start: 89 @35181 has 1 MA's), (123, 34986), (128, 34971), (144, 34923),

Gene: Aegeus_43 Start: 36657, Stop: 36304, Start Num: 70

Candidate Starts for Aegeus_43:

(Start: 70 @36657 has 98 MA's), (Start: 76 @36621 has 3 MA's), (82, 36594), (87, 36570), (118, 36384), (126, 36357),

Gene: Agent47_42 Start: 34524, Stop: 34129, Start Num: 69

Candidate Starts for Agent47_42:

(Start: 66 @34530 has 6 MA's), (Start: 69 @34524 has 17 MA's), (Start: 76 @34485 has 3 MA's), (Start: 79 @34473 has 3 MA's), (84, 34446), (99, 34344), (102, 34332), (108, 34281), (124, 34221),

Gene: Ageofdapage_45 Start: 35950, Stop: 35573, Start Num: 70

Candidate Starts for Ageofdapage_45:

(44, 36001), (Start: 70 @35950 has 98 MA's), (Start: 76 @35914 has 3 MA's), (88, 35860), (Start: 89 @35854 has 1 MA's), (123, 35662), (128, 35647), (144, 35599),

Gene: AlishaPH_43 Start: 35250, Stop: 34873, Start Num: 70

Candidate Starts for AlishaPH_43:

(Start: 70 @35250 has 98 MA's), (Start: 76 @35217 has 3 MA's), (81, 35190), (88, 35163), (Start: 89 @35157 has 1 MA's), (128, 34947), (144, 34899),

Gene: AlleyCat_42 Start: 34384, Stop: 33980, Start Num: 66

Candidate Starts for AlleyCat_42:

(Start: 66 @34384 has 6 MA's), (Start: 69 @34378 has 17 MA's), (Start: 76 @34339 has 3 MA's), (Start: 79 @34327 has 3 MA's), (84, 34300), (102, 34186), (108, 34135), (124, 34075), (148, 33985),

Gene: Amelie_38 Start: 34527, Stop: 34129, Start Num: 62

Candidate Starts for Amelie_38:

(43, 34566), (Start: 62 @34527 has 11 MA's), (Start: 89 @34431 has 1 MA's), (129, 34206), (131, 34200),

Gene: Amgine_43 Start: 36096, Stop: 35581, Start Num: 23

Candidate Starts for Amgine_43:

(Start: 23 @36096 has 1 MA's), (24, 36090), (Start: 71 @35973 has 13 MA's), (Start: 76 @35943 has 3 MA's), (81, 35916), (Start: 89 @35883 has 1 MA's), (90, 35862), (91, 35856), (97, 35820), (101, 35802), (108, 35745), (125, 35673), (144, 35607), (148, 35586),

Gene: Aminay_46 Start: 36466, Stop: 36146, Start Num: 76

Candidate Starts for Aminay_46:

(Start: 69 @36508 has 17 MA's), (73, 36478), (Start: 76 @36466 has 3 MA's), (77, 36463), (Start: 89 @36406 has 1 MA's), (100, 36328), (105, 36298), (107, 36283), (121, 36214),

Gene: Amohnition_45 Start: 36010, Stop: 35639, Start Num: 71

Candidate Starts for Amohnition_45:

(Start: 71 @36010 has 13 MA's), (Start: 76 @35980 has 3 MA's), (Start: 89 @35920 has 1 MA's), (93, 35878), (97, 35857), (101, 35839), (105, 35812), (107, 35797), (108, 35782), (111, 35761), (116, 35740), (142, 35680), (144, 35665),

Gene: Anaya_45 Start: 35589, Stop: 35209, Start Num: 70

Candidate Starts for Anaya_45:

(44, 35640), (Start: 70 @35589 has 98 MA's), (Start: 76 @35553 has 3 MA's), (Start: 89 @35493 has 1 MA's), (123, 35298), (128, 35283), (144, 35235),

Gene: Angelica_43 Start: 35209, Stop: 34829, Start Num: 70

Candidate Starts for Angelica_43:

(44, 35260), (Start: 70 @35209 has 98 MA's), (Start: 76 @35173 has 3 MA's), (Start: 89 @35113 has 1 MA's), (123, 34918), (128, 34903), (144, 34855),

Gene: Apocalypse_46 Start: 35992, Stop: 35615, Start Num: 70

Candidate Starts for Apocalypse_46:

(Start: 70 @35992 has 98 MA's), (81, 35932), (88, 35905), (Start: 89 @35899 has 1 MA's), (91, 35872), (128, 35689), (144, 35641),

Gene: Appletree2_37 Start: 32877, Stop: 32467, Start Num: 57

Candidate Starts for Appletree2_37:

(Start: 53 @32883 has 7 MA's), (Start: 57 @32877 has 18 MA's), (Start: 68 @32856 has 27 MA's), (Start: 70 @32847 has 98 MA's), (74, 32814), (Start: 89 @32748 has 1 MA's), (92, 32709), (97, 32685), (105, 32640), (131, 32532),

Gene: Archie_40 Start: 34485, Stop: 34096, Start Num: 68

Candidate Starts for Archie_40:

(Start: 57 @34506 has 18 MA's), (Start: 68 @34485 has 27 MA's), (Start: 70 @34476 has 98 MA's), (Start: 76 @34440 has 3 MA's), (77, 34437), (84, 34407), (92, 34341), (97, 34317), (105, 34272), (123, 34185), (125, 34173), (128, 34161),

Gene: Asayake_43 Start: 35293, Stop: 34913, Start Num: 70

Candidate Starts for Asayake_43:

(49, 35329), (Start: 70 @35293 has 98 MA's), (Start: 76 @35257 has 3 MA's), (Start: 89 @35197 has 1 MA's), (111, 35038), (128, 34987), (144, 34939),

Gene: Atiba_43 Start: 34941, Stop: 34561, Start Num: 70

Candidate Starts for Atiba_43:

(49, 34977), (Start: 70 @34941 has 98 MA's), (Start: 76 @34905 has 3 MA's), (Start: 89 @34845 has 1 MA's), (128, 34635), (144, 34587),

Gene: AvadaKedavra_38 Start: 32944, Stop: 32534, Start Num: 57

Candidate Starts for AvadaKedavra_38:

(Start: 53 @32950 has 7 MA's), (Start: 57 @32944 has 18 MA's), (Start: 67 @32926 has 1 MA's), (Start: 68 @32923 has 27 MA's), (Start: 70 @32914 has 98 MA's), (74, 32881), (Start: 89 @32815 has 1 MA's), (92, 32776), (97, 32752), (105, 32707), (107, 32692), (131, 32599),

Gene: BEEST_43 Start: 35293, Stop: 34913, Start Num: 70

Candidate Starts for BEEST_43:

(49, 35329), (Start: 70 @35293 has 98 MA's), (Start: 76 @35257 has 3 MA's), (Start: 89 @35197 has 1 MA's), (111, 35038), (128, 34987), (144, 34939),

Gene: BGlluviae_43 Start: 35096, Stop: 34716, Start Num: 70

Candidate Starts for BGlluviae_43:

(49, 35132), (Start: 70 @35096 has 98 MA's), (Start: 76 @35060 has 3 MA's), (Start: 89 @35000 has 1 MA's), (111, 34841), (128, 34790), (144, 34742),

Gene: BaghaKamala_42 Start: 34415, Stop: 34038, Start Num: 70

Candidate Starts for BaghaKamala_42:

(Start: 70 @34415 has 98 MA's), (Start: 76 @34382 has 3 MA's), (81, 34355), (88, 34328), (Start: 89 @34322 has 1 MA's), (128, 34112), (144, 34064),

Gene: Baoshan_39 Start: 34142, Stop: 33753, Start Num: 68

Candidate Starts for Baoshan_39:

(Start: 68 @34142 has 27 MA's), (Start: 70 @34133 has 98 MA's), (77, 34094), (84, 34064), (92, 33998), (97, 33974), (105, 33929), (116, 33857), (123, 33842), (125, 33830), (128, 33818),

Gene: BarrelRoll_43 Start: 34964, Stop: 34584, Start Num: 70

Candidate Starts for BarrelRoll_43:

(49, 35000), (Start: 70 @34964 has 98 MA's), (Start: 76 @34928 has 3 MA's), (Start: 89 @34868 has 1 MA's), (128, 34658), (144, 34610),

Gene: Baudelaire_43 Start: 36657, Stop: 36304, Start Num: 70

Candidate Starts for Baudelaire_43:

(Start: 70 @36657 has 98 MA's), (Start: 76 @36621 has 3 MA's), (82, 36594), (87, 36570), (118, 36384), (126, 36357),

Gene: Bazzle_40 Start: 34517, Stop: 34128, Start Num: 68

Candidate Starts for Bazzle_40:

(Start: 57 @34538 has 18 MA's), (Start: 68 @34517 has 27 MA's), (Start: 70 @34508 has 98 MA's), (Start: 76 @34472 has 3 MA's), (77, 34469), (84, 34439), (92, 34373), (97, 34349), (105, 34304), (123, 34217), (125, 34205), (128, 34193),

Gene: Beezoo_45 Start: 35940, Stop: 35563, Start Num: 70

Candidate Starts for Beezoo_45:

(44, 35991), (Start: 70 @35940 has 98 MA's), (Start: 76 @35904 has 3 MA's), (Start: 89 @35844 has 1 MA's), (128, 35637), (144, 35589),

Gene: Bella96_44 Start: 35832, Stop: 35455, Start Num: 70

Candidate Starts for Bella96_44:

(44, 35883), (Start: 70 @35832 has 98 MA's), (Start: 76 @35796 has 3 MA's), (Start: 89 @35736 has 1 MA's), (128, 35529), (144, 35481),

Gene: Belladonna_43 Start: 35096, Stop: 34716, Start Num: 70

Candidate Starts for Belladonna_43:

(49, 35132), (Start: 70 @35096 has 98 MA's), (Start: 76 @35060 has 3 MA's), (Start: 89 @35000 has 1 MA's), (111, 34841), (128, 34790), (144, 34742),

Gene: Bellis_38 Start: 34518, Stop: 34135, Start Num: 70

Candidate Starts for Bellis_38:

(4, 34737), (6, 34731), (9, 34710), (10, 34689), (Start: 53 @34554 has 7 MA's), (Start: 57 @34548 has 18 MA's), (Start: 70 @34518 has 98 MA's), (75, 34482), (77, 34476), (81, 34452), (84, 34446), (Start: 89 @34419 has 1 MA's), (92, 34380), (95, 34368), (97, 34356), (103, 34323), (105, 34311), (114, 34254), (128, 34203), (148, 34140),

Gene: BigCheese_40 Start: 34280, Stop: 33891, Start Num: 68

Candidate Starts for BigCheese_40:

(Start: 68 @34280 has 27 MA's), (Start: 70 @34271 has 98 MA's), (77, 34232), (81, 34208), (84, 34202), (Start: 89 @34175 has 1 MA's), (92, 34136), (97, 34112), (105, 34067), (123, 33980), (128, 33956),

Gene: Biglebops_38 Start: 34527, Stop: 34129, Start Num: 62

Candidate Starts for Biglebops_38:

(43, 34566), (Start: 62 @34527 has 11 MA's), (Start: 89 @34431 has 1 MA's), (129, 34206), (131, 34200),

Gene: Blizzard_43 Start: 35293, Stop: 34913, Start Num: 70

Candidate Starts for Blizzard_43:

(49, 35329), (Start: 70 @35293 has 98 MA's), (Start: 76 @35257 has 3 MA's), (Start: 89 @35197 has 1 MA's), (111, 35038), (128, 34987), (144, 34939),

Gene: BobsGarage_40 Start: 34280, Stop: 33891, Start Num: 68

Candidate Starts for BobsGarage_40:

(Start: 68 @34280 has 27 MA's), (Start: 70 @34271 has 98 MA's), (77, 34232), (81, 34208), (84, 34202), (Start: 89 @34175 has 1 MA's), (92, 34136), (97, 34112), (105, 34067), (123, 33980), (128, 33956),

Gene: Boiiii_43 Start: 35295, Stop: 34915, Start Num: 70

Candidate Starts for Boiiii_43:

(49, 35331), (Start: 70 @35295 has 98 MA's), (Start: 76 @35259 has 3 MA's), (Start: 89 @35199 has 1 MA's), (111, 35040), (128, 34989), (144, 34941),

Gene: Boilgate_42 Start: 36179, Stop: 35817, Start Num: 69

Candidate Starts for Boilgate_42:

(18, 36305), (21, 36296), (31, 36266), (33, 36263), (35, 36254), (45, 36230), (48, 36215), (51, 36209), (59, 36197), (Start: 69 @36179 has 17 MA's), (Start: 76 @36140 has 3 MA's), (104, 35978),

Gene: BoostSeason_46 Start: 36618, Stop: 36250, Start Num: 70

Candidate Starts for BoostSeason_46:

(Start: 70 @36618 has 98 MA's), (Start: 76 @36582 has 3 MA's), (Start: 89 @36522 has 1 MA's), (96, 36462), (106, 36402), (109, 36372), (113, 36360), (122, 36330), (144, 36276),

Gene: Breezona_40 Start: 34280, Stop: 33891, Start Num: 68

Candidate Starts for Breezona_40:

(Start: 68 @34280 has 27 MA's), (Start: 70 @34271 has 98 MA's), (77, 34232), (81, 34208), (84, 34202), (Start: 89 @34175 has 1 MA's), (92, 34136), (97, 34112), (105, 34067), (123, 33980), (128, 33956),

Gene: Bromden_39 Start: 33770, Stop: 33351, Start Num: 53

Candidate Starts for Bromden_39:

(4, 33953), (6, 33947), (18, 33869), (Start: 53 @33770 has 7 MA's), (Start: 70 @33734 has 98 MA's), (77, 33698), (Start: 79 @33689 has 3 MA's), (84, 33668), (85, 33659), (Start: 89 @33641 has 1 MA's), (97, 33578), (98, 33572), (103, 33545), (105, 33533), (108, 33503), (123, 33449), (128, 33425), (130, 33419),

Gene: Bryler_46 Start: 34876, Stop: 34463, Start Num: 63

Candidate Starts for Bryler_46:

(42, 34921), (Start: 63 @34876 has 2 MA's), (Start: 71 @34855 has 13 MA's), (Start: 76 @34825 has 3 MA's), (97, 34702), (107, 34642), (108, 34627), (134, 34528), (136, 34519), (144, 34489),

Gene: CREW_43 Start: 35096, Stop: 34716, Start Num: 70

Candidate Starts for CREW_43:

(49, 35132), (Start: 70 @35096 has 98 MA's), (Start: 76 @35060 has 3 MA's), (Start: 89 @35000 has 1 MA's), (111, 34841), (128, 34790), (144, 34742),

Gene: Cain_46 Start: 34864, Stop: 34451, Start Num: 63

Candidate Starts for Cain_46:

(42, 34909), (Start: 63 @34864 has 2 MA's), (Start: 71 @34843 has 13 MA's), (Start: 76 @34813 has 3 MA's), (97, 34690), (107, 34630), (108, 34615), (134, 34516), (136, 34507), (144, 34477),

Gene: Calm_38 Start: 32950, Stop: 32540, Start Num: 57

Candidate Starts for Calm_38:

(Start: 53 @32956 has 7 MA's), (Start: 57 @32950 has 18 MA's), (Start: 67 @32932 has 1 MA's), (Start: 68 @32929 has 27 MA's), (Start: 70 @32920 has 98 MA's), (74, 32887), (Start: 89 @32821 has 1 MA's), (92, 32782), (97, 32758), (105, 32713), (107, 32698), (131, 32605),

Gene: Capricorn_43 Start: 35096, Stop: 34716, Start Num: 70

Candidate Starts for Capricorn_43:

(49, 35132), (Start: 70 @35096 has 98 MA's), (Start: 76 @35060 has 3 MA's), (Start: 89 @35000 has 1 MA's), (111, 34841), (128, 34790), (144, 34742),

Gene: CaseJules_44 Start: 35293, Stop: 34913, Start Num: 70

Candidate Starts for CaseJules_44:

(49, 35329), (Start: 70 @35293 has 98 MA's), (Start: 76 @35257 has 3 MA's), (Start: 89 @35197 has 1 MA's), (111, 35038), (128, 34987), (144, 34939),

Gene: Chancellor_47 Start: 36038, Stop: 35679, Start Num: 65

Candidate Starts for Chancellor_47:

(35, 36107), (51, 36062), (Start: 65 @36038 has 14 MA's), (Start: 69 @36032 has 17 MA's), (Start: 76 @35993 has 3 MA's), (87, 35942), (96, 35873), (101, 35852), (104, 35831), (106, 35813), (132, 35711),

Gene: Chaser_37 Start: 32998, Stop: 32618, Start Num: 70

Candidate Starts for Chaser_37:

(Start: 53 @33034 has 7 MA's), (Start: 70 @32998 has 98 MA's), (75, 32965), (81, 32935), (84, 32929), (Start: 89 @32902 has 1 MA's), (92, 32863), (98, 32833), (105, 32794), (128, 32689), (130, 32683),

Gene: CheetoDust_42 Start: 34466, Stop: 34089, Start Num: 70

Candidate Starts for CheetoDust_42:

(59, 34490), (Start: 70 @34466 has 98 MA's), (Start: 76 @34430 has 3 MA's), (80, 34415), (Start: 89 @34370 has 1 MA's), (128, 34163), (144, 34115),

Gene: Cheetobro_47 Start: 36035, Stop: 35676, Start Num: 65

Candidate Starts for Cheetobro_47:

(35, 36104), (51, 36059), (Start: 65 @36035 has 14 MA's), (Start: 69 @36029 has 17 MA's), (Start: 76 @35990 has 3 MA's), (87, 35939), (96, 35870), (101, 35849), (104, 35828), (106, 35810), (132, 35708),

Gene: Chris_45 Start: 35677, Stop: 35300, Start Num: 72

Candidate Starts for Chris_45:

(27, 35785), (Start: 72 @35677 has 13 MA's), (Start: 76 @35647 has 3 MA's), (80, 35632), (Start: 89 @35587 has 1 MA's), (90, 35566), (97, 35524), (108, 35449), (130, 35374), (142, 35341), (144, 35326),

Gene: CicholasNage_38 Start: 32971, Stop: 32561, Start Num: 57

Candidate Starts for CicholasNage_38:

(Start: 53 @32977 has 7 MA's), (Start: 57 @32971 has 18 MA's), (Start: 67 @32953 has 1 MA's), (Start: 68 @32950 has 27 MA's), (Start: 70 @32941 has 98 MA's), (74, 32908), (Start: 89 @32842 has 1 MA's), (92, 32803), (97, 32779), (105, 32734), (107, 32719), (131, 32626),

Gene: Claus_41 Start: 34300, Stop: 33911, Start Num: 68

Candidate Starts for Claus_41:

(Start: 68 @34300 has 27 MA's), (Start: 70 @34291 has 98 MA's), (77, 34252), (84, 34222), (92, 34156), (97, 34132), (105, 34087), (116, 34015), (123, 34000), (125, 33988), (128, 33976),

Gene: Clautastrophe_38 Start: 34516, Stop: 34133, Start Num: 70

Candidate Starts for Clautastrophe_38:

(4, 34735), (6, 34729), (9, 34708), (10, 34687), (Start: 53 @34552 has 7 MA's), (Start: 57 @34546 has 18 MA's), (Start: 70 @34516 has 98 MA's), (75, 34480), (77, 34474), (81, 34450), (84, 34444), (Start: 89 @34417 has 1 MA's), (92, 34378), (95, 34366), (97, 34354), (103, 34321), (105, 34309), (114,

34252), (128, 34201), (148, 34138),

Gene: Collard_41 Start: 34491, Stop: 34090, Start Num: 66

Candidate Starts for Collard_41:

(Start: 66 @34491 has 6 MA's), (Start: 69 @34485 has 17 MA's), (Start: 76 @34446 has 3 MA's),
(Start: 79 @34434 has 3 MA's), (84, 34407), (99, 34305), (102, 34293), (108, 34242), (124, 34182),

Gene: CrimD_43 Start: 35221, Stop: 34844, Start Num: 70

Candidate Starts for CrimD_43:

(44, 35272), (Start: 70 @35221 has 98 MA's), (Start: 76 @35185 has 3 MA's), (80, 35170), (Start: 89
@35125 has 1 MA's), (128, 34918), (144, 34870),

Gene: Crossroads_40 Start: 34282, Stop: 33893, Start Num: 68

Candidate Starts for Crossroads_40:

(Start: 68 @34282 has 27 MA's), (Start: 70 @34273 has 98 MA's), (77, 34234), (81, 34210), (84,
34204), (92, 34138), (97, 34114), (105, 34069), (120, 33988), (123, 33982), (125, 33970), (128,
33958),

Gene: Curiosium_46 Start: 34128, Stop: 33742, Start Num: 72

Candidate Starts for Curiosium_46:

(19, 34254), (22, 34245), (34, 34209), (36, 34203), (41, 34188), (Start: 72 @34128 has 13 MA's),
(Start: 89 @34035 has 1 MA's), (91, 34008), (125, 33837), (144, 33768),

Gene: Dadosky_42 Start: 34386, Stop: 33982, Start Num: 66

Candidate Starts for Dadosky_42:

(Start: 66 @34386 has 6 MA's), (Start: 69 @34380 has 17 MA's), (Start: 76 @34341 has 3 MA's),
(Start: 79 @34329 has 3 MA's), (84, 34302), (102, 34188), (108, 34137), (124, 34077), (148, 33987),

Gene: Dalmuri_43 Start: 35096, Stop: 34716, Start Num: 70

Candidate Starts for Dalmuri_43:

(49, 35132), (Start: 70 @35096 has 98 MA's), (Start: 76 @35060 has 3 MA's), (Start: 89 @35000 has
1 MA's), (111, 34841), (128, 34790), (144, 34742),

Gene: DarthP_45 Start: 35904, Stop: 35545, Start Num: 71

Candidate Starts for DarthP_45:

(Start: 71 @35904 has 13 MA's), (Start: 76 @35874 has 3 MA's), (Start: 89 @35814 has 1 MA's), (93,
35772),

Gene: Deby_43 Start: 35225, Stop: 34845, Start Num: 70

Candidate Starts for Deby_43:

(44, 35276), (Start: 70 @35225 has 98 MA's), (Start: 76 @35189 has 3 MA's), (Start: 89 @35129 has
1 MA's), (123, 34934), (128, 34919), (144, 34871),

Gene: Devera_47 Start: 35759, Stop: 35382, Start Num: 70

Candidate Starts for Devera_47:

(Start: 70 @35759 has 98 MA's), (Start: 76 @35723 has 3 MA's), (Start: 89 @35663 has 1 MA's),
(111, 35504), (128, 35456), (144, 35408),

Gene: DirkDirk_37 Start: 32937, Stop: 32527, Start Num: 57

Candidate Starts for DirkDirk_37:

(Start: 53 @32943 has 7 MA's), (Start: 57 @32937 has 18 MA's), (Start: 68 @32916 has 27 MA's),
(Start: 70 @32907 has 98 MA's), (74, 32874), (Start: 89 @32808 has 1 MA's), (92, 32769), (97,
32745), (105, 32700), (131, 32592),

Gene: DismalFunk_46 Start: 37051, Stop: 36680, Start Num: 70

Candidate Starts for DismalFunk_46:

(44, 37105), (Start: 70 @37051 has 98 MA's), (Start: 76 @37015 has 3 MA's), (80, 37000), (Start: 89 @36955 has 1 MA's), (96, 36895), (106, 36835), (109, 36805), (113, 36793), (122, 36763), (144, 36706),

Gene: DismalStressor_46 Start: 37051, Stop: 36680, Start Num: 70

Candidate Starts for DismalStressor_46:

(44, 37105), (Start: 70 @37051 has 98 MA's), (Start: 76 @37015 has 3 MA's), (80, 37000), (Start: 89 @36955 has 1 MA's), (96, 36895), (106, 36835), (109, 36805), (113, 36793), (122, 36763), (144, 36706),

Gene: Dole_46 Start: 35761, Stop: 35384, Start Num: 70

Candidate Starts for Dole_46:

(Start: 70 @35761 has 98 MA's), (Start: 76 @35725 has 3 MA's), (Start: 89 @35665 has 1 MA's), (111, 35506), (128, 35458), (144, 35410),

Gene: Douge_37 Start: 32936, Stop: 32556, Start Num: 70

Candidate Starts for Douge_37:

(Start: 53 @32972 has 7 MA's), (Start: 70 @32936 has 98 MA's), (75, 32903), (81, 32873), (84, 32867), (Start: 89 @32840 has 1 MA's), (92, 32801), (98, 32771), (105, 32732), (128, 32627), (130, 32621),

Gene: DrHayes_44 Start: 35877, Stop: 35500, Start Num: 70

Candidate Starts for DrHayes_44:

(44, 35928), (Start: 70 @35877 has 98 MA's), (Start: 76 @35841 has 3 MA's), (Start: 89 @35781 has 1 MA's), (128, 35574), (144, 35526),

Gene: DrSeegs_40 Start: 34280, Stop: 33891, Start Num: 68

Candidate Starts for DrSeegs_40:

(Start: 68 @34280 has 27 MA's), (Start: 70 @34271 has 98 MA's), (77, 34232), (81, 34208), (84, 34202), (Start: 89 @34175 has 1 MA's), (92, 34136), (97, 34112), (105, 34067), (123, 33980), (128, 33956),

Gene: DuncansLeg_38 Start: 34570, Stop: 34151, Start Num: 53

Candidate Starts for DuncansLeg_38:

(4, 34753), (6, 34747), (9, 34726), (10, 34705), (Start: 53 @34570 has 7 MA's), (Start: 57 @34564 has 18 MA's), (Start: 70 @34534 has 98 MA's), (75, 34498), (77, 34492), (84, 34462), (Start: 89 @34435 has 1 MA's), (92, 34396), (95, 34384), (97, 34372), (103, 34339), (105, 34327), (114, 34270), (128, 34219), (148, 34156),

Gene: Durfee_43 Start: 35293, Stop: 34913, Start Num: 70

Candidate Starts for Durfee_43:

(49, 35329), (Start: 70 @35293 has 98 MA's), (Start: 76 @35257 has 3 MA's), (Start: 89 @35197 has 1 MA's), (111, 35038), (128, 34987), (144, 34939),

Gene: DyoEdafos_39 Start: 33270, Stop: 32890, Start Num: 70

Candidate Starts for DyoEdafos_39:

(Start: 53 @33306 has 7 MA's), (Start: 70 @33270 has 98 MA's), (75, 33237), (84, 33201), (Start: 89 @33174 has 1 MA's), (92, 33135), (97, 33111), (128, 32961), (130, 32955), (140, 32931),

Gene: Edugator_41 Start: 34805, Stop: 34407, Start Num: 69

Candidate Starts for Edugator_41:

(Start: 66 @34811 has 6 MA's), (Start: 69 @34805 has 17 MA's), (Start: 76 @34766 has 3 MA's),
(Start: 79 @34754 has 3 MA's), (84, 34727), (102, 34613), (108, 34562), (124, 34502), (148, 34412),

Gene: Efra2_46 Start: 35018, Stop: 34629, Start Num: 69

Candidate Starts for Efra2_46:

(15, 35156), (16, 35150), (17, 35147), (20, 35138), (25, 35123), (Start: 69 @35018 has 17 MA's),
(Start: 70 @35012 has 98 MA's), (Start: 89 @34922 has 1 MA's), (97, 34859), (104, 34820), (108,
34784), (124, 34724), (125, 34718), (147, 34634),

Gene: Ekdilam_42 Start: 35465, Stop: 35106, Start Num: 71

Candidate Starts for Ekdilam_42:

(33, 35549), (Start: 71 @35465 has 13 MA's), (Start: 76 @35435 has 3 MA's), (Start: 79 @35423 has
3 MA's), (Start: 89 @35375 has 1 MA's), (97, 35312), (142, 35147), (144, 35132),

Gene: Ellie_41 Start: 35161, Stop: 34769, Start Num: 71

Candidate Starts for Ellie_41:

(24, 35278), (Start: 71 @35161 has 13 MA's), (Start: 76 @35131 has 3 MA's), (Start: 89 @35071 has
1 MA's), (90, 35050), (91, 35044), (97, 35008), (101, 34990), (108, 34933), (125, 34861), (144, 34795),
(148, 34774),

Gene: Ellson_38 Start: 34546, Stop: 34127, Start Num: 53

Candidate Starts for Ellson_38:

(4, 34729), (6, 34723), (9, 34702), (10, 34681), (Start: 53 @34546 has 7 MA's), (Start: 57 @34540 has
18 MA's), (Start: 70 @34510 has 98 MA's), (75, 34474), (77, 34468), (84, 34438), (Start: 89 @34411
has 1 MA's), (92, 34372), (95, 34360), (97, 34348), (103, 34315), (105, 34303), (128, 34195), (148,
34132),

Gene: Emerson_44 Start: 34972, Stop: 34592, Start Num: 70

Candidate Starts for Emerson_44:

(49, 35008), (Start: 70 @34972 has 98 MA's), (Start: 76 @34936 has 3 MA's), (Start: 89 @34876 has
1 MA's), (128, 34666), (144, 34618),

Gene: Enceladus_37 Start: 32920, Stop: 32510, Start Num: 57

Candidate Starts for Enceladus_37:

(Start: 53 @32926 has 7 MA's), (Start: 57 @32920 has 18 MA's), (Start: 68 @32899 has 27 MA's),
(Start: 70 @32890 has 98 MA's), (74, 32857), (Start: 89 @32791 has 1 MA's), (92, 32752), (97,
32728), (105, 32683), (131, 32575),

Gene: Enkosi_41 Start: 37140, Stop: 36742, Start Num: 62

Candidate Starts for Enkosi_41:

(43, 37179), (Start: 62 @37140 has 11 MA's), (Start: 89 @37044 has 1 MA's), (129, 36819), (131,
36813),

Gene: Eponine_49 Start: 36791, Stop: 36432, Start Num: 65

Candidate Starts for Eponine_49:

(35, 36860), (51, 36815), (Start: 65 @36791 has 14 MA's), (Start: 69 @36785 has 17 MA's), (Start: 76
@36746 has 3 MA's), (87, 36695), (96, 36626), (101, 36605), (104, 36584), (106, 36566), (132,
36464),

Gene: Faith1_40 Start: 34280, Stop: 33891, Start Num: 68

Candidate Starts for Faith1_40:

(Start: 68 @34280 has 27 MA's), (Start: 70 @34271 has 98 MA's), (77, 34232), (81, 34208), (84, 34202), (Start: 89 @34175 has 1 MA's), (92, 34136), (97, 34112), (105, 34067), (123, 33980), (128, 33956),

Gene: Fefferhead_43 Start: 35112, Stop: 34720, Start Num: 71

Candidate Starts for Fefferhead_43:

(24, 35229), (Start: 71 @35112 has 13 MA's), (Start: 76 @35082 has 3 MA's), (Start: 89 @35022 has 1 MA's), (90, 35001), (91, 34995), (97, 34959), (101, 34941), (108, 34884), (125, 34812), (144, 34746), (148, 34725),

Gene: Feyre_41 Start: 34186, Stop: 33836, Start Num: 79

Candidate Starts for Feyre_41:

(Start: 79 @34186 has 3 MA's), (102, 34045), (108, 33994), (124, 33934),

Gene: Findley_46 Start: 37044, Stop: 36673, Start Num: 70

Candidate Starts for Findley_46:

(44, 37098), (Start: 70 @37044 has 98 MA's), (Start: 76 @37008 has 3 MA's), (80, 36993), (Start: 89 @36948 has 1 MA's), (96, 36888), (106, 36828), (109, 36798), (113, 36786), (122, 36756), (144, 36699),

Gene: Finemlucis_40 Start: 34556, Stop: 34167, Start Num: 68

Candidate Starts for Finemlucis_40:

(Start: 68 @34556 has 27 MA's), (Start: 70 @34547 has 98 MA's), (77, 34508), (81, 34484), (84, 34478), (Start: 89 @34451 has 1 MA's), (92, 34412), (97, 34388), (105, 34343), (123, 34256), (125, 34244), (128, 34232),

Gene: Finnry_38 Start: 34555, Stop: 34136, Start Num: 53

Candidate Starts for Finnry_38:

(4, 34738), (6, 34732), (9, 34711), (10, 34690), (Start: 53 @34555 has 7 MA's), (Start: 57 @34549 has 18 MA's), (Start: 70 @34519 has 98 MA's), (75, 34483), (77, 34477), (81, 34453), (84, 34447), (Start: 89 @34420 has 1 MA's), (92, 34381), (95, 34369), (97, 34357), (103, 34324), (105, 34312), (114, 34255), (128, 34204), (148, 34141),

Gene: Fionnbharth_47 Start: 36189, Stop: 35830, Start Num: 65

Candidate Starts for Fionnbharth_47:

(14, 36321), (35, 36258), (37, 36255), (51, 36213), (Start: 65 @36189 has 14 MA's), (Start: 69 @36183 has 17 MA's), (Start: 76 @36144 has 3 MA's), (87, 36093), (96, 36024), (101, 36003), (104, 35982), (106, 35964), (132, 35862),

Gene: Gabriela_40 Start: 34542, Stop: 34153, Start Num: 68

Candidate Starts for Gabriela_40:

(Start: 68 @34542 has 27 MA's), (Start: 70 @34533 has 98 MA's), (77, 34494), (81, 34470), (84, 34464), (Start: 89 @34437 has 1 MA's), (92, 34398), (97, 34374), (105, 34329), (123, 34242), (128, 34218),

Gene: Ganymede_44 Start: 35413, Stop: 35036, Start Num: 70

Candidate Starts for Ganymede_44:

(44, 35464), (Start: 70 @35413 has 98 MA's), (Start: 76 @35377 has 3 MA's), (Start: 89 @35317 has 1 MA's), (111, 35158), (128, 35110), (144, 35062),

Gene: Gardann_40 Start: 34281, Stop: 33892, Start Num: 68

Candidate Starts for Gardann_40:

(Start: 68 @34281 has 27 MA's), (Start: 70 @34272 has 98 MA's), (77, 34233), (81, 34209), (84, 34203), (Start: 89 @34176 has 1 MA's), (92, 34137), (97, 34113), (105, 34068), (123, 33981), (125, 33969), (128, 33957),

Gene: Gengar_41 Start: 34347, Stop: 33946, Start Num: 69

Candidate Starts for Gengar_41:

(Start: 69 @34347 has 17 MA's), (Start: 79 @34296 has 3 MA's), (102, 34155), (108, 34104), (124, 34044),

Gene: Geraldini_45 Start: 36027, Stop: 35650, Start Num: 70

Candidate Starts for Geraldini_45:

(Start: 70 @36027 has 98 MA's), (Start: 76 @35994 has 3 MA's), (81, 35967), (88, 35940), (Start: 89 @35934 has 1 MA's), (128, 35724), (144, 35676),

Gene: Guanica15_46 Start: 34969, Stop: 34586, Start Num: 70

Candidate Starts for Guanica15_46:

(15, 35113), (16, 35107), (17, 35104), (20, 35095), (25, 35080), (Start: 69 @34975 has 17 MA's), (Start: 70 @34969 has 98 MA's), (Start: 89 @34879 has 1 MA's), (97, 34816), (104, 34777), (108, 34741), (124, 34681), (125, 34675), (147, 34591),

Gene: Guillsminger_42 Start: 34318, Stop: 33917, Start Num: 69

Candidate Starts for Guillsminger_42:

(Start: 69 @34318 has 17 MA's), (Start: 79 @34267 has 3 MA's), (102, 34126), (108, 34075), (124, 34015),

Gene: GuuelaD_40 Start: 34319, Stop: 33930, Start Num: 68

Candidate Starts for GuuelaD_40:

(Start: 68 @34319 has 27 MA's), (Start: 70 @34310 has 98 MA's), (77, 34271), (81, 34247), (84, 34241), (92, 34175), (97, 34151), (105, 34106), (120, 34025), (123, 34019), (125, 34007), (128, 33995),

Gene: Hafay_40 Start: 34314, Stop: 33925, Start Num: 68

Candidate Starts for Hafay_40:

(Start: 68 @34314 has 27 MA's), (Start: 70 @34305 has 98 MA's), (77, 34266), (81, 34242), (84, 34236), (92, 34170), (97, 34146), (105, 34101), (120, 34020), (123, 34014), (125, 34002), (128, 33990),

Gene: Halena_37 Start: 32946, Stop: 32536, Start Num: 57

Candidate Starts for Halena_37:

(Start: 53 @32952 has 7 MA's), (Start: 57 @32946 has 18 MA's), (Start: 67 @32928 has 1 MA's), (Start: 68 @32925 has 27 MA's), (Start: 70 @32916 has 98 MA's), (74, 32883), (Start: 89 @32817 has 1 MA's), (92, 32778), (97, 32754), (105, 32709), (107, 32694), (131, 32601),

Gene: Hammy_45 Start: 35892, Stop: 35533, Start Num: 71

Candidate Starts for Hammy_45:

(Start: 71 @35892 has 13 MA's), (Start: 89 @35802 has 1 MA's), (93, 35760),

Gene: HedwigODU_43 Start: 34981, Stop: 34601, Start Num: 70

Candidate Starts for HedwigODU_43:

(49, 35017), (Start: 70 @34981 has 98 MA's), (Start: 76 @34945 has 3 MA's), (Start: 89 @34885 has 1 MA's), (128, 34675), (144, 34627),

Gene: Heftyboy_41 Start: 34467, Stop: 34066, Start Num: 69

Candidate Starts for Heftyboy_41:

(26, 34566), (46, 34515), (49, 34503), (Start: 69 @34467 has 17 MA's), (Start: 79 @34416 has 3 MA's), (102, 34275), (108, 34224), (124, 34164), (139, 34116),

Gene: Homura_43 Start: 35096, Stop: 34716, Start Num: 70

Candidate Starts for Homura_43:

(49, 35132), (Start: 70 @35096 has 98 MA's), (Start: 76 @35060 has 3 MA's), (Start: 89 @35000 has 1 MA's), (111, 34841), (128, 34790), (144, 34742),

Gene: Hyperbowlee_43 Start: 35293, Stop: 34913, Start Num: 70

Candidate Starts for Hyperbowlee_43:

(49, 35329), (Start: 70 @35293 has 98 MA's), (Start: 76 @35257 has 3 MA's), (Start: 89 @35197 has 1 MA's), (111, 35038), (128, 34987), (144, 34939),

Gene: Illumine_46 Start: 35761, Stop: 35384, Start Num: 70

Candidate Starts for Illumine_46:

(Start: 70 @35761 has 98 MA's), (Start: 76 @35725 has 3 MA's), (Start: 89 @35665 has 1 MA's), (111, 35506), (128, 35458), (144, 35410),

Gene: Inky_43 Start: 35096, Stop: 34716, Start Num: 70

Candidate Starts for Inky_43:

(49, 35132), (Start: 70 @35096 has 98 MA's), (Start: 76 @35060 has 3 MA's), (Start: 89 @35000 has 1 MA's), (111, 34841), (128, 34790), (144, 34742),

Gene: InvictusManeo_41 Start: 34534, Stop: 34133, Start Num: 66

Candidate Starts for InvictusManeo_41:

(Start: 66 @34534 has 6 MA's), (Start: 69 @34528 has 17 MA's), (Start: 76 @34489 has 3 MA's), (Start: 79 @34477 has 3 MA's), (84, 34450), (99, 34348), (102, 34336), (108, 34285), (124, 34225),

Gene: JAWS_43 Start: 34970, Stop: 34590, Start Num: 70

Candidate Starts for JAWS_43:

(49, 35006), (Start: 70 @34970 has 98 MA's), (Start: 76 @34934 has 3 MA's), (Start: 89 @34874 has 1 MA's), (111, 34715), (128, 34664), (144, 34616),

Gene: JF1_47 Start: 36061, Stop: 35747, Start Num: 76

Candidate Starts for JF1_47:

(Start: 76 @36061 has 3 MA's), (87, 36010), (96, 35941), (101, 35920), (104, 35899), (106, 35881), (132, 35779),

Gene: Jarvi_43 Start: 35096, Stop: 34716, Start Num: 70

Candidate Starts for Jarvi_43:

(49, 35132), (Start: 70 @35096 has 98 MA's), (Start: 76 @35060 has 3 MA's), (Start: 89 @35000 has 1 MA's), (111, 34841), (128, 34790), (144, 34742),

Gene: Jayhawk_44 Start: 34979, Stop: 34599, Start Num: 70

Candidate Starts for Jayhawk_44:

(49, 35015), (Start: 70 @34979 has 98 MA's), (Start: 76 @34943 has 3 MA's), (Start: 89 @34883 has 1 MA's), (128, 34673), (144, 34625),

Gene: Jeckyll_43 Start: 35096, Stop: 34716, Start Num: 70

Candidate Starts for Jeckyll_43:

(49, 35132), (Start: 70 @35096 has 98 MA's), (Start: 76 @35060 has 3 MA's), (Start: 89 @35000 has 1 MA's), (111, 34841), (128, 34790), (144, 34742),

Gene: JoeDirt_37 Start: 32924, Stop: 32508, Start Num: 53

Candidate Starts for JoeDirt_37:

(Start: 53 @32924 has 7 MA's), (Start: 57 @32918 has 18 MA's), (Start: 68 @32897 has 27 MA's), (Start: 70 @32888 has 98 MA's), (74, 32855), (Start: 89 @32789 has 1 MA's), (92, 32750), (97, 32726), (105, 32681), (131, 32573),

Gene: Joy99_43 Start: 35025, Stop: 34645, Start Num: 70

Candidate Starts for Joy99_43:

(49, 35061), (Start: 70 @35025 has 98 MA's), (Start: 76 @34989 has 3 MA's), (Start: 89 @34929 has 1 MA's), (111, 34770), (128, 34719), (144, 34671),

Gene: Jubie_38 Start: 34517, Stop: 34134, Start Num: 70

Candidate Starts for Jubie_38:

(4, 34736), (6, 34730), (9, 34709), (10, 34688), (Start: 53 @34553 has 7 MA's), (Start: 57 @34547 has 18 MA's), (Start: 70 @34517 has 98 MA's), (75, 34481), (77, 34475), (81, 34451), (84, 34445), (Start: 89 @34418 has 1 MA's), (92, 34379), (95, 34367), (97, 34355), (103, 34322), (105, 34310), (114, 34253), (128, 34202), (148, 34139),

Gene: Juliette_49 Start: 36262, Stop: 35903, Start Num: 65

Candidate Starts for Juliette_49:

(35, 36331), (51, 36286), (Start: 65 @36262 has 14 MA's), (Start: 69 @36256 has 17 MA's), (Start: 76 @36217 has 3 MA's), (87, 36166), (96, 36097), (101, 36076), (104, 36055), (106, 36037), (132, 35935),

Gene: Kahlid_40 Start: 34286, Stop: 33897, Start Num: 68

Candidate Starts for Kahlid_40:

(Start: 68 @34286 has 27 MA's), (Start: 70 @34277 has 98 MA's), (77, 34238), (81, 34214), (84, 34208), (92, 34142), (97, 34118), (105, 34073), (120, 33992), (123, 33986), (125, 33974), (128, 33962),

Gene: Keshu_47 Start: 35704, Stop: 35282, Start Num: 52

Candidate Starts for Keshu_47:

(Start: 52 @35704 has 4 MA's), (Start: 72 @35671 has 13 MA's), (97, 35515), (106, 35458), (144, 35308),

Gene: KiSi_47 Start: 36100, Stop: 35729, Start Num: 72

Candidate Starts for KiSi_47:

(11, 36259), (12, 36256), (13, 36253), (55, 36133), (Start: 72 @36100 has 13 MA's), (Start: 76 @36070 has 3 MA's), (77, 36067), (Start: 89 @36010 has 1 MA's), (94, 35965), (97, 35947), (108, 35872), (130, 35800), (144, 35755),

Gene: Kingsolomon_38 Start: 34546, Stop: 34133, Start Num: 57

Candidate Starts for Kingsolomon_38:

(4, 34735), (6, 34729), (9, 34708), (10, 34687), (Start: 53 @34552 has 7 MA's), (Start: 57 @34546 has 18 MA's), (Start: 70 @34516 has 98 MA's), (75, 34480), (77, 34474), (81, 34450), (84, 34444), (Start: 89 @34417 has 1 MA's), (92, 34378), (95, 34366), (97, 34354), (103, 34321), (105, 34309), (114, 34252), (128, 34201), (148, 34138),

Gene: Kratio_40 Start: 34085, Stop: 33681, Start Num: 66

Candidate Starts for Kratio_40:

(Start: 66 @34085 has 6 MA's), (Start: 69 @34079 has 17 MA's), (Start: 76 @34040 has 3 MA's), (Start: 79 @34028 has 3 MA's), (84, 34001), (88, 33980), (99, 33899), (102, 33887), (108, 33836),

(124, 33776),

Gene: Krueger_49 Start: 35862, Stop: 35461, Start Num: 67

Candidate Starts for Krueger_49:

(Start: 67 @35862 has 1 MA's), (Start: 72 @35850 has 13 MA's), (Start: 76 @35820 has 3 MA's), (93, 35718), (97, 35697), (103, 35664), (108, 35622), (115, 35586), (143, 35493), (144, 35487),

Gene: Krypton555_38 Start: 34434, Stop: 34048, Start Num: 70

Candidate Starts for Krypton555_38:

(Start: 30 @34530 has 1 MA's), (41, 34500), (Start: 53 @34470 has 7 MA's), (Start: 57 @34464 has 18 MA's), (Start: 70 @34434 has 98 MA's), (77, 34395), (81, 34371), (84, 34365), (Start: 89 @34338 has 1 MA's), (92, 34299), (95, 34287), (97, 34275), (103, 34242), (128, 34116), (148, 34053),

Gene: Larva_42 Start: 34253, Stop: 33849, Start Num: 66

Candidate Starts for Larva_42:

(Start: 66 @34253 has 6 MA's), (Start: 69 @34247 has 17 MA's), (Start: 76 @34208 has 3 MA's), (Start: 79 @34196 has 3 MA's), (84, 34169), (102, 34055), (108, 34004), (124, 33944), (148, 33854),

Gene: LastHope_46 Start: 34433, Stop: 34047, Start Num: 72

Candidate Starts for LastHope_46:

(34, 34514), (36, 34508), (41, 34493), (Start: 72 @34433 has 13 MA's), (Start: 89 @34340 has 1 MA's), (91, 34313), (125, 34142), (144, 34073),

Gene: LaterM_44 Start: 35874, Stop: 35497, Start Num: 70

Candidate Starts for LaterM_44:

(44, 35925), (Start: 70 @35874 has 98 MA's), (Start: 76 @35838 has 3 MA's), (88, 35784), (Start: 89 @35778 has 1 MA's), (123, 35586), (128, 35571), (144, 35523),

Gene: LeBron_38 Start: 32968, Stop: 32552, Start Num: 53

Candidate Starts for LeBron_38:

(Start: 53 @32968 has 7 MA's), (Start: 57 @32962 has 18 MA's), (Start: 68 @32941 has 27 MA's), (Start: 70 @32932 has 98 MA's), (74, 32899), (Start: 89 @32833 has 1 MA's), (92, 32794), (97, 32770), (105, 32725), (131, 32617),

Gene: LeMond_47 Start: 36084, Stop: 35710, Start Num: 72

Candidate Starts for LeMond_47:

(32, 36180), (56, 36117), (Start: 72 @36084 has 13 MA's), (Start: 76 @36054 has 3 MA's), (77, 36051), (Start: 89 @35994 has 1 MA's), (94, 35949), (97, 35931), (108, 35856), (130, 35781), (144, 35736),

Gene: Leston_41 Start: 34396, Stop: 34046, Start Num: 79

Candidate Starts for Leston_41:

(Start: 69 @34447 has 17 MA's), (Start: 79 @34396 has 3 MA's), (102, 34255), (108, 34204), (124, 34144),

Gene: Lewan_40 Start: 34274, Stop: 33885, Start Num: 68

Candidate Starts for Lewan_40:

(Start: 68 @34274 has 27 MA's), (Start: 70 @34265 has 98 MA's), (77, 34226), (81, 34202), (84, 34196), (92, 34130), (97, 34106), (105, 34061), (120, 33980), (123, 33974), (125, 33962), (128, 33950),

Gene: LilDestine_40 Start: 34278, Stop: 33889, Start Num: 68

Candidate Starts for LilDestine_40:

(Start: 68 @34278 has 27 MA's), (Start: 70 @34269 has 98 MA's), (77, 34230), (81, 34206), (84, 34200), (Start: 89 @34173 has 1 MA's), (92, 34134), (97, 34110), (105, 34065), (123, 33978), (128, 33954),

Gene: LindNT_43 Start: 35164, Stop: 34787, Start Num: 70

Candidate Starts for LindNT_43:

(44, 35215), (Start: 70 @35164 has 98 MA's), (Start: 76 @35128 has 3 MA's), (80, 35113), (Start: 89 @35068 has 1 MA's), (128, 34861), (144, 34813),

Gene: Llorens_43 Start: 35096, Stop: 34716, Start Num: 70

Candidate Starts for Llorens_43:

(49, 35132), (Start: 70 @35096 has 98 MA's), (Start: 76 @35060 has 3 MA's), (Start: 89 @35000 has 1 MA's), (111, 34841), (128, 34790), (144, 34742),

Gene: Loadrie_40 Start: 34312, Stop: 33923, Start Num: 68

Candidate Starts for Loadrie_40:

(Start: 68 @34312 has 27 MA's), (Start: 70 @34303 has 98 MA's), (77, 34264), (81, 34240), (84, 34234), (92, 34168), (97, 34144), (105, 34099), (120, 34018), (123, 34012), (125, 34000), (128, 33988),

Gene: Lolly9_38 Start: 34324, Stop: 33941, Start Num: 70

Candidate Starts for Lolly9_38:

(4, 34543), (6, 34537), (9, 34516), (10, 34495), (Start: 53 @34360 has 7 MA's), (Start: 57 @34354 has 18 MA's), (Start: 70 @34324 has 98 MA's), (75, 34288), (77, 34282), (84, 34252), (Start: 89 @34225 has 1 MA's), (92, 34186), (95, 34174), (97, 34162), (103, 34129), (104, 34123), (105, 34117), (114, 34060), (128, 34009), (148, 33946),

Gene: Lumos_38 Start: 34543, Stop: 34130, Start Num: 57

Candidate Starts for Lumos_38:

(4, 34732), (6, 34726), (9, 34705), (10, 34684), (Start: 53 @34549 has 7 MA's), (Start: 57 @34543 has 18 MA's), (Start: 70 @34513 has 98 MA's), (75, 34477), (77, 34471), (81, 34447), (84, 34441), (Start: 89 @34414 has 1 MA's), (92, 34375), (95, 34363), (97, 34351), (103, 34318), (105, 34306), (114, 34249), (128, 34198), (148, 34135),

Gene: Lunahalos_43 Start: 35096, Stop: 34716, Start Num: 70

Candidate Starts for Lunahalos_43:

(49, 35132), (Start: 70 @35096 has 98 MA's), (Start: 76 @35060 has 3 MA's), (Start: 89 @35000 has 1 MA's), (111, 34841), (128, 34790), (144, 34742),

Gene: MAckerman_37 Start: 32940, Stop: 32530, Start Num: 57

Candidate Starts for MAckerman_37:

(Start: 53 @32946 has 7 MA's), (Start: 57 @32940 has 18 MA's), (Start: 67 @32922 has 1 MA's), (Start: 68 @32919 has 27 MA's), (Start: 70 @32910 has 98 MA's), (74, 32877), (Start: 89 @32811 has 1 MA's), (92, 32772), (97, 32748), (105, 32703), (107, 32688), (131, 32595),

Gene: MacnCheese_47 Start: 36557, Stop: 36177, Start Num: 72

Candidate Starts for MacnCheese_47:

(Start: 30 @36650 has 1 MA's), (Start: 52 @36590 has 4 MA's), (Start: 72 @36557 has 13 MA's), (88, 36473), (97, 36404), (108, 36329), (145, 36191),

Gene: Malthus_48 Start: 35950, Stop: 35591, Start Num: 65

Candidate Starts for Malthus_48:

(35, 36019), (51, 35974), (Start: 65 @35950 has 14 MA's), (Start: 69 @35944 has 17 MA's), (Start: 76 @35905 has 3 MA's), (87, 35854), (96, 35785), (101, 35764), (104, 35743), (106, 35725), (132, 35623),

Gene: Marcoliusprime_46 Start: 37051, Stop: 36680, Start Num: 70

Candidate Starts for Marcoliusprime_46:

(44, 37105), (Start: 70 @37051 has 98 MA's), (Start: 76 @37015 has 3 MA's), (80, 37000), (Start: 89 @36955 has 1 MA's), (96, 36895), (106, 36835), (109, 36805), (113, 36793), (122, 36763), (144, 36706),

Gene: MarkPhew_46 Start: 35518, Stop: 35147, Start Num: 72

Candidate Starts for MarkPhew_46:

(47, 35566), (54, 35554), (Start: 72 @35518 has 13 MA's), (Start: 89 @35428 has 1 MA's), (90, 35407), (97, 35365), (108, 35290), (111, 35269), (125, 35233), (131, 35212), (144, 35173),

Gene: Marshawn_46 Start: 35965, Stop: 35570, Start Num: 64

Candidate Starts for Marshawn_46:

(Start: 64 @35965 has 1 MA's), (Start: 79 @35914 has 3 MA's), (Start: 89 @35866 has 1 MA's), (94, 35821), (97, 35803), (108, 35728), (124, 35665), (144, 35599), (148, 35578),

Gene: Mdavu_39 Start: 34516, Stop: 34118, Start Num: 62

Candidate Starts for Mdavu_39:

(43, 34555), (Start: 62 @34516 has 11 MA's), (Start: 89 @34420 has 1 MA's), (129, 34195), (131, 34189),

Gene: MeaningOfLife_44 Start: 35907, Stop: 35530, Start Num: 70

Candidate Starts for MeaningOfLife_44:

(44, 35958), (Start: 70 @35907 has 98 MA's), (Start: 76 @35871 has 3 MA's), (Start: 89 @35811 has 1 MA's), (111, 35652), (128, 35604), (144, 35556),

Gene: Megsy_46 Start: 35223, Stop: 34846, Start Num: 70

Candidate Starts for Megsy_46:

(44, 35274), (Start: 70 @35223 has 98 MA's), (Start: 76 @35187 has 3 MA's), (80, 35172), (Start: 89 @35127 has 1 MA's), (128, 34920), (144, 34872),

Gene: Miley16_40 Start: 34280, Stop: 33891, Start Num: 68

Candidate Starts for Miley16_40:

(Start: 68 @34280 has 27 MA's), (Start: 70 @34271 has 98 MA's), (77, 34232), (81, 34208), (84, 34202), (Start: 89 @34175 has 1 MA's), (92, 34136), (97, 34112), (105, 34067), (123, 33980), (128, 33956),

Gene: Milly_46 Start: 37024, Stop: 36653, Start Num: 70

Candidate Starts for Milly_46:

(44, 37078), (Start: 70 @37024 has 98 MA's), (Start: 76 @36988 has 3 MA's), (80, 36973), (Start: 89 @36928 has 1 MA's), (96, 36868), (106, 36808), (109, 36778), (113, 36766), (122, 36736), (144, 36679),

Gene: MiniLon_38 Start: 34355, Stop: 33942, Start Num: 57

Candidate Starts for MiniLon_38:

(4, 34544), (6, 34538), (9, 34517), (10, 34496), (Start: 53 @34361 has 7 MA's), (Start: 57 @34355 has 18 MA's), (Start: 70 @34325 has 98 MA's), (75, 34289), (77, 34283), (84, 34253), (Start: 89 @34226 has 1 MA's), (92, 34187), (95, 34175), (97, 34163), (103, 34130), (104, 34124), (105, 34118), (114, 34061), (128, 34010), (148, 33947),

Gene: MiniMac_38 Start: 34358, Stop: 33939, Start Num: 53

Candidate Starts for MiniMac_38:

(Start: 53 @34358 has 7 MA's), (Start: 57 @34352 has 18 MA's), (Start: 70 @34322 has 98 MA's), (75, 34286), (77, 34280), (84, 34250), (Start: 89 @34223 has 1 MA's), (92, 34184), (95, 34172), (97, 34160), (103, 34127), (104, 34121), (105, 34115), (114, 34058), (128, 34007), (148, 33944),

Gene: Miryou_44 Start: 36599, Stop: 36249, Start Num: 79

Candidate Starts for Miryou_44:

(Start: 69 @36650 has 17 MA's), (Start: 79 @36599 has 3 MA's), (102, 36458), (108, 36407), (124, 36347),

Gene: MissDaisy_45 Start: 35425, Stop: 35069, Start Num: 65

Candidate Starts for MissDaisy_45:

(45, 35470), (50, 35452), (51, 35449), (Start: 65 @35425 has 14 MA's), (Start: 69 @35419 has 17 MA's), (Start: 76 @35380 has 3 MA's), (87, 35329), (101, 35239), (104, 35218), (106, 35200),

Gene: Mitti_47 Start: 36126, Stop: 35767, Start Num: 65

Candidate Starts for Mitti_47:

(35, 36195), (51, 36150), (Start: 65 @36126 has 14 MA's), (Start: 69 @36120 has 17 MA's), (Start: 76 @36081 has 3 MA's), (87, 36030), (96, 35961), (101, 35940), (104, 35919), (106, 35901), (132, 35799),

Gene: MkaliMitinis3_40 Start: 34282, Stop: 33893, Start Num: 68

Candidate Starts for MkaliMitinis3_40:

(Start: 68 @34282 has 27 MA's), (Start: 70 @34273 has 98 MA's), (77, 34234), (81, 34210), (84, 34204), (92, 34138), (97, 34114), (105, 34069), (120, 33988), (123, 33982), (125, 33970), (128, 33958),

Gene: Moostard_38 Start: 34518, Stop: 34135, Start Num: 70

Candidate Starts for Moostard_38:

(4, 34737), (6, 34731), (9, 34710), (10, 34689), (Start: 53 @34554 has 7 MA's), (Start: 57 @34548 has 18 MA's), (Start: 70 @34518 has 98 MA's), (75, 34482), (77, 34476), (81, 34452), (84, 34446), (Start: 89 @34419 has 1 MA's), (92, 34380), (95, 34368), (97, 34356), (103, 34323), (105, 34311), (114, 34254), (128, 34203), (148, 34140),

Gene: MsGreen_38 Start: 34516, Stop: 34133, Start Num: 70

Candidate Starts for MsGreen_38:

(4, 34735), (6, 34729), (9, 34708), (10, 34687), (Start: 53 @34552 has 7 MA's), (Start: 57 @34546 has 18 MA's), (Start: 70 @34516 has 98 MA's), (75, 34480), (77, 34474), (81, 34450), (84, 34444), (Start: 89 @34417 has 1 MA's), (92, 34378), (95, 34366), (97, 34354), (103, 34321), (105, 34309), (114, 34252), (128, 34201), (148, 34138),

Gene: Mufasa_46 Start: 36609, Stop: 36241, Start Num: 70

Candidate Starts for Mufasa_46:

(Start: 70 @36609 has 98 MA's), (Start: 76 @36573 has 3 MA's), (Start: 89 @36513 has 1 MA's), (96, 36453), (106, 36393), (109, 36363), (113, 36351), (122, 36321), (144, 36267),

Gene: Murucutumbu_44 Start: 35967, Stop: 35590, Start Num: 70

Candidate Starts for Murucutumbu_44:

(44, 36018), (Start: 70 @35967 has 98 MA's), (Start: 76 @35931 has 3 MA's), (88, 35877), (Start: 89 @35871 has 1 MA's), (123, 35679), (128, 35664), (144, 35616),

Gene: Mynx_44 Start: 35298, Stop: 34921, Start Num: 70

Candidate Starts for Mynx_44:

(44, 35349), (Start: 70 @35298 has 98 MA's), (Start: 76 @35262 has 3 MA's), (80, 35247), (Start: 89 @35202 has 1 MA's), (128, 34995), (144, 34947),

Gene: Nergal_40 Start: 33595, Stop: 33221, Start Num: 70

Candidate Starts for Nergal_40:

(58, 33622), (Start: 70 @33595 has 98 MA's), (Start: 76 @33559 has 3 MA's), (81, 33532), (Start: 89 @33499 has 1 MA's), (97, 33436), (107, 33376), (111, 33340), (144, 33247), (148, 33226),

Gene: Netyap_40 Start: 34280, Stop: 33891, Start Num: 68

Candidate Starts for Netyap_40:

(Start: 68 @34280 has 27 MA's), (Start: 70 @34271 has 98 MA's), (77, 34232), (81, 34208), (84, 34202), (Start: 89 @34175 has 1 MA's), (92, 34136), (97, 34112), (105, 34067), (123, 33980), (128, 33956),

Gene: Nibb_45 Start: 35241, Stop: 34867, Start Num: 72

Candidate Starts for Nibb_45:

(61, 35265), (Start: 72 @35241 has 13 MA's), (Start: 76 @35211 has 3 MA's), (80, 35196), (Start: 89 @35151 has 1 MA's), (90, 35130), (97, 35088), (105, 35043), (108, 35013), (111, 34992), (127, 34950), (130, 34941), (142, 34908), (144, 34893),

Gene: Nicholas_38 Start: 34516, Stop: 34133, Start Num: 70

Candidate Starts for Nicholas_38:

(4, 34735), (6, 34729), (9, 34708), (10, 34687), (Start: 53 @34552 has 7 MA's), (Start: 57 @34546 has 18 MA's), (Start: 70 @34516 has 98 MA's), (75, 34480), (77, 34474), (81, 34450), (84, 34444), (Start: 89 @34417 has 1 MA's), (92, 34378), (95, 34366), (97, 34354), (103, 34321), (105, 34309), (114, 34252), (128, 34201), (148, 34138),

Gene: Nicholasp3_40 Start: 34281, Stop: 33892, Start Num: 68

Candidate Starts for Nicholasp3_40:

(Start: 68 @34281 has 27 MA's), (Start: 70 @34272 has 98 MA's), (77, 34233), (81, 34209), (84, 34203), (Start: 89 @34176 has 1 MA's), (92, 34137), (97, 34113), (105, 34068), (123, 33981), (125, 33969), (128, 33957),

Gene: Nikao_41 Start: 37140, Stop: 36742, Start Num: 62

Candidate Starts for Nikao_41:

(43, 37179), (Start: 62 @37140 has 11 MA's), (Start: 89 @37044 has 1 MA's), (129, 36819), (131, 36813),

Gene: Niklas_45 Start: 35707, Stop: 35315, Start Num: 62

Candidate Starts for Niklas_45:

(Start: 62 @35707 has 11 MA's), (86, 35623), (Start: 89 @35608 has 1 MA's), (112, 35446), (131, 35383), (141, 35359), (146, 35326),

Gene: Nutello_38 Start: 34527, Stop: 34129, Start Num: 62

Candidate Starts for Nutello_38:

(43, 34566), (Start: 62 @34527 has 11 MA's), (Start: 89 @34431 has 1 MA's), (129, 34206), (131, 34200),

Gene: OhShagHennessy_37 Start: 32908, Stop: 32498, Start Num: 57

Candidate Starts for OhShagHennessy_37:

(Start: 53 @32914 has 7 MA's), (Start: 57 @32908 has 18 MA's), (Start: 68 @32887 has 27 MA's), (Start: 70 @32878 has 98 MA's), (74, 32845), (Start: 89 @32779 has 1 MA's), (92, 32740), (97, 32716), (105, 32671), (131, 32563),

Gene: OkiRoe_41 Start: 34320, Stop: 33919, Start Num: 69

Candidate Starts for OkiRoe_41:

(Start: 69 @34320 has 17 MA's), (Start: 79 @34269 has 3 MA's), (102, 34128), (108, 34077), (124, 34017),

Gene: OmniCritical_46 Start: 35929, Stop: 35576, Start Num: 69

Candidate Starts for OmniCritical_46:

(35, 36004), (51, 35959), (Start: 65 @35935 has 14 MA's), (Start: 69 @35929 has 17 MA's), (Start: 76 @35890 has 3 MA's), (87, 35839), (96, 35770), (101, 35749), (104, 35728), (106, 35710), (132, 35608),

Gene: Omnicron_44 Start: 33930, Stop: 33529, Start Num: 69

Candidate Starts for Omnicron_44:

(Start: 69 @33930 has 17 MA's), (Start: 79 @33879 has 3 MA's), (84, 33852), (99, 33750), (102, 33738), (108, 33687), (124, 33627),

Gene: Oscar_47 Start: 35987, Stop: 35613, Start Num: 72

Candidate Starts for Oscar_47:

(55, 36020), (Start: 72 @35987 has 13 MA's), (Start: 76 @35957 has 3 MA's), (77, 35954), (Start: 89 @35897 has 1 MA's), (94, 35852), (97, 35834), (108, 35759), (130, 35684), (144, 35639),

Gene: Padfoot_43 Start: 35293, Stop: 34913, Start Num: 70

Candidate Starts for Padfoot_43:

(49, 35329), (Start: 70 @35293 has 98 MA's), (Start: 76 @35257 has 3 MA's), (Start: 89 @35197 has 1 MA's), (111, 35038), (128, 34987), (144, 34939),

Gene: Padpat_44 Start: 34972, Stop: 34592, Start Num: 70

Candidate Starts for Padpat_44:

(49, 35008), (Start: 70 @34972 has 98 MA's), (Start: 76 @34936 has 3 MA's), (Start: 89 @34876 has 1 MA's), (128, 34666), (144, 34618),

Gene: Paola_41 Start: 34318, Stop: 33917, Start Num: 69

Candidate Starts for Paola_41:

(Start: 69 @34318 has 17 MA's), (Start: 79 @34267 has 3 MA's), (102, 34126), (108, 34075), (124, 34015),

Gene: Patt_44 Start: 35104, Stop: 34793, Start Num: 76

Candidate Starts for Patt_44:

(33, 35227), (35, 35218), (37, 35215), (38, 35209), (45, 35194), (50, 35176), (51, 35173), (Start: 65 @35149 has 14 MA's), (Start: 69 @35143 has 17 MA's), (Start: 76 @35104 has 3 MA's), (87, 35053), (101, 34963), (104, 34942), (106, 34924),

Gene: Peanam_45 Start: 35664, Stop: 35272, Start Num: 62

Candidate Starts for Peanam_45:

(Start: 62 @35664 has 11 MA's), (86, 35580), (Start: 89 @35565 has 1 MA's), (131, 35340), (141, 35316), (146, 35283),

Gene: Peel_43 Start: 35098, Stop: 34718, Start Num: 70

Candidate Starts for Peel_43:

(49, 35134), (Start: 70 @35098 has 98 MA's), (Start: 76 @35062 has 3 MA's), (Start: 89 @35002 has 1 MA's), (111, 34843), (128, 34792), (144, 34744),

Gene: Pharb_43 Start: 34363, Stop: 33977, Start Num: 72

Candidate Starts for Pharb_43:

(Start: 72 @34363 has 13 MA's), (Start: 76 @34333 has 3 MA's), (97, 34210), (106, 34153), (108, 34135), (119, 34087), (121, 34081), (144, 34003),

Gene: PhelpsODU_45 Start: 34877, Stop: 34485, Start Num: 71

Candidate Starts for PhelpsODU_45:

(1, 35147), (2, 35111), (3, 35096), (7, 35087), (8, 35078), (Start: 71 @34877 has 13 MA's), (Start: 76 @34847 has 3 MA's), (97, 34724), (107, 34664), (108, 34649), (134, 34550), (144, 34511),

Gene: Phrank_46 Start: 34834, Stop: 34442, Start Num: 71

Candidate Starts for Phrank_46:

(5, 35047), (8, 35035), (Start: 71 @34834 has 13 MA's), (Start: 76 @34804 has 3 MA's), (97, 34681), (103, 34648), (107, 34621), (108, 34606), (115, 34570), (136, 34498), (144, 34468),

Gene: Phrappuccino_40 Start: 22957, Stop: 22583, Start Num: 70

Candidate Starts for Phrappuccino_40:

(Start: 70 @22957 has 98 MA's), (Start: 79 @22906 has 3 MA's), (83, 22888), (105, 22750), (135, 22618), (137, 22612),

Gene: Piatt_43 Start: 35293, Stop: 34913, Start Num: 70

Candidate Starts for Piatt_43:

(49, 35329), (Start: 70 @35293 has 98 MA's), (Start: 76 @35257 has 3 MA's), (Start: 89 @35197 has 1 MA's), (111, 35038), (128, 34987), (144, 34939),

Gene: Pixie_45 Start: 35157, Stop: 34735, Start Num: 52

Candidate Starts for Pixie_45:

(Start: 52 @35157 has 4 MA's), (Start: 72 @35124 has 13 MA's), (97, 34968), (106, 34911), (108, 34893), (119, 34845), (144, 34761),

Gene: Pokerus_42 Start: 35018, Stop: 34638, Start Num: 70

Candidate Starts for Pokerus_42:

(Start: 70 @35018 has 98 MA's), (Start: 76 @34985 has 3 MA's), (81, 34958), (88, 34931), (Start: 89 @34925 has 1 MA's), (128, 34712), (144, 34664),

Gene: Prithvi_44 Start: 35164, Stop: 34787, Start Num: 70

Candidate Starts for Prithvi_44:

(44, 35215), (Start: 70 @35164 has 98 MA's), (Start: 76 @35128 has 3 MA's), (80, 35113), (Start: 89 @35068 has 1 MA's), (128, 34861), (144, 34813),

Gene: Psycho_42 Start: 34326, Stop: 33979, Start Num: 79

Candidate Starts for Psycho_42:

(Start: 66 @34383 has 6 MA's), (Start: 69 @34377 has 17 MA's), (Start: 76 @34338 has 3 MA's), (Start: 79 @34326 has 3 MA's), (84, 34299), (102, 34185), (108, 34134), (124, 34074), (148, 33984),

Gene: QuincyRose_42 Start: 35413, Stop: 35036, Start Num: 70

Candidate Starts for QuincyRose_42:

(44, 35464), (Start: 70 @35413 has 98 MA's), (Start: 76 @35377 has 3 MA's), (Start: 89 @35317 has 1 MA's), (111, 35158), (128, 35110), (144, 35062),

Gene: Ramen_43 Start: 34983, Stop: 34603, Start Num: 70

Candidate Starts for Ramen_43:

(49, 35019), (Start: 70 @34983 has 98 MA's), (Start: 76 @34947 has 3 MA's), (Start: 89 @34887 has 1 MA's), (128, 34677), (144, 34629),

Gene: Rando14_43 Start: 33501, Stop: 33097, Start Num: 69

Candidate Starts for Rando14_43:

(Start: 69 @33501 has 17 MA's), (Start: 79 @33447 has 3 MA's), (108, 33255), (124, 33195),

Gene: Rapunzel97_43 Start: 34979, Stop: 34599, Start Num: 70

Candidate Starts for Rapunzel97_43:

(49, 35015), (Start: 70 @34979 has 98 MA's), (Start: 76 @34943 has 3 MA's), (Start: 89 @34883 has 1 MA's), (128, 34673), (144, 34625),

Gene: Reptar3000_45 Start: 35140, Stop: 34784, Start Num: 65

Candidate Starts for Reptar3000_45:

(35, 35209), (51, 35164), (Start: 65 @35140 has 14 MA's), (Start: 69 @35134 has 17 MA's), (Start: 76 @35095 has 3 MA's), (87, 35044), (101, 34954), (104, 34933), (106, 34915),

Gene: Rose5_37 Start: 32935, Stop: 32525, Start Num: 57

Candidate Starts for Rose5_37:

(Start: 53 @32941 has 7 MA's), (Start: 57 @32935 has 18 MA's), (Start: 67 @32917 has 1 MA's), (Start: 68 @32914 has 27 MA's), (Start: 70 @32905 has 98 MA's), (74, 32872), (Start: 89 @32806 has 1 MA's), (92, 32767), (97, 32743), (105, 32698), (107, 32683), (131, 32590),

Gene: Rosmarinus_43 Start: 35084, Stop: 34704, Start Num: 70

Candidate Starts for Rosmarinus_43:

(49, 35120), (Start: 70 @35084 has 98 MA's), (Start: 76 @35048 has 3 MA's), (Start: 89 @34988 has 1 MA's), (111, 34829), (128, 34778), (144, 34730),

Gene: Rumpelstiltskin_40 Start: 34547, Stop: 34158, Start Num: 68

Candidate Starts for Rumpelstiltskin_40:

(Start: 68 @34547 has 27 MA's), (Start: 70 @34538 has 98 MA's), (77, 34499), (81, 34475), (84, 34469), (Start: 89 @34442 has 1 MA's), (92, 34403), (97, 34379), (105, 34334), (123, 34247), (128, 34223),

Gene: Ruthiejr_48 Start: 36000, Stop: 35641, Start Num: 65

Candidate Starts for Ruthiejr_48:

(35, 36069), (51, 36024), (Start: 65 @36000 has 14 MA's), (Start: 69 @35994 has 17 MA's), (Start: 76 @35955 has 3 MA's), (87, 35904), (96, 35835), (101, 35814), (104, 35793), (106, 35775), (132, 35673),

Gene: SamScheppers_46 Start: 36429, Stop: 36070, Start Num: 65

Candidate Starts for SamScheppers_46:

(35, 36498), (51, 36453), (Start: 65 @36429 has 14 MA's), (Start: 69 @36423 has 17 MA's), (Start: 76 @36384 has 3 MA's), (87, 36333), (96, 36264), (101, 36243), (104, 36222), (106, 36204), (132, 36102),

Gene: SamuelLPlaqson_44 Start: 35877, Stop: 35500, Start Num: 70

Candidate Starts for SamuelLPlaqson_44:

(44, 35928), (Start: 70 @35877 has 98 MA's), (Start: 76 @35841 has 3 MA's), (Start: 89 @35781 has 1 MA's), (128, 35574), (144, 35526),

Gene: Scarlett_47 Start: 35979, Stop: 35605, Start Num: 72

Candidate Starts for Scarlett_47:

(55, 36012), (Start: 72 @35979 has 13 MA's), (Start: 76 @35949 has 3 MA's), (77, 35946), (Start: 89 @35889 has 1 MA's), (94, 35844), (97, 35826), (108, 35751), (130, 35676), (144, 35631),

Gene: Settecandela_40 Start: 22957, Stop: 22583, Start Num: 70

Candidate Starts for Settecandela_40:

(Start: 70 @22957 has 98 MA's), (Start: 79 @22906 has 3 MA's), (83, 22888), (105, 22750), (135, 22618), (137, 22612),

Gene: SgtBeansprout_38 Start: 34527, Stop: 34063, Start Num: 62

Candidate Starts for SgtBeansprout_38:

(43, 34566), (Start: 62 @34527 has 11 MA's), (Start: 89 @34431 has 1 MA's), (129, 34206), (131, 34200),

Gene: Shadow1_48 Start: 35996, Stop: 35607, Start Num: 72

Candidate Starts for Shadow1_48:

(Start: 72 @35996 has 13 MA's), (Start: 76 @35966 has 3 MA's), (93, 35864), (97, 35843), (107, 35783), (108, 35768), (115, 35732), (125, 35696), (143, 35639), (144, 35633),

Gene: Shaobing_45 Start: 35682, Stop: 35284, Start Num: 62

Candidate Starts for Shaobing_45:

(Start: 62 @35682 has 11 MA's), (Start: 89 @35583 has 1 MA's), (108, 35445), (124, 35379), (131, 35352), (141, 35328), (146, 35295),

Gene: ShedlockHolmes_46 Start: 35683, Stop: 35261, Start Num: 52

Candidate Starts for ShedlockHolmes_46:

(Start: 30 @35740 has 1 MA's), (39, 35713), (Start: 52 @35683 has 4 MA's), (Start: 72 @35650 has 13 MA's), (106, 35437), (108, 35419), (119, 35371), (144, 35287),

Gene: ShiaSurprise_44 Start: 35293, Stop: 34913, Start Num: 70

Candidate Starts for ShiaSurprise_44:

(49, 35329), (Start: 70 @35293 has 98 MA's), (Start: 76 @35257 has 3 MA's), (Start: 89 @35197 has 1 MA's), (111, 35038), (128, 34987), (144, 34939),

Gene: Silverleaf_37 Start: 32935, Stop: 32525, Start Num: 57

Candidate Starts for Silverleaf_37:

(Start: 53 @32941 has 7 MA's), (Start: 57 @32935 has 18 MA's), (Start: 67 @32917 has 1 MA's), (Start: 68 @32914 has 27 MA's), (Start: 70 @32905 has 98 MA's), (74, 32872), (Start: 89 @32806 has 1 MA's), (92, 32767), (97, 32743), (105, 32698), (107, 32683), (131, 32590),

Gene: SirPhilip_45 Start: 36219, Stop: 35824, Start Num: 71

Candidate Starts for SirPhilip_45:

(Start: 71 @36219 has 13 MA's), (Start: 76 @36189 has 3 MA's), (Start: 89 @36129 has 1 MA's), (91, 36102), (97, 36066), (110, 35973), (122, 35943), (150, 35850),

Gene: Slarp_47 Start: 36038, Stop: 35679, Start Num: 65

Candidate Starts for Slarp_47:

(35, 36107), (51, 36062), (Start: 65 @36038 has 14 MA's), (Start: 69 @36032 has 17 MA's), (Start: 76 @35993 has 3 MA's), (87, 35942), (96, 35873), (101, 35852), (104, 35831), (106, 35813), (132, 35711),

Gene: Slimphazie_43 Start: 34979, Stop: 34599, Start Num: 70

Candidate Starts for Slimphazie_43:

(49, 35015), (Start: 70 @34979 has 98 MA's), (Start: 76 @34943 has 3 MA's), (Start: 89 @34883 has 1 MA's), (128, 34673), (144, 34625),

Gene: Snenia_38 Start: 34517, Stop: 34134, Start Num: 70

Candidate Starts for Snenia_38:

(4, 34736), (6, 34730), (9, 34709), (10, 34688), (Start: 53 @34553 has 7 MA's), (Start: 57 @34547 has 18 MA's), (Start: 70 @34517 has 98 MA's), (75, 34481), (77, 34475), (81, 34451), (84, 34445), (Start: 89 @34418 has 1 MA's), (92, 34379), (95, 34367), (97, 34355), (103, 34322), (105, 34310), (114, 34253), (128, 34202), (148, 34139),

Gene: SoSeph_41 Start: 34467, Stop: 34066, Start Num: 69

Candidate Starts for SoSeph_41:

(26, 34566), (46, 34515), (49, 34503), (Start: 69 @34467 has 17 MA's), (Start: 79 @34416 has 3 MA's), (102, 34275), (108, 34224), (124, 34164), (139, 34116),

Gene: Spock_43 Start: 35097, Stop: 34717, Start Num: 70

Candidate Starts for Spock_43:

(49, 35133), (Start: 70 @35097 has 98 MA's), (Start: 76 @35061 has 3 MA's), (Start: 89 @35001 has 1 MA's), (111, 34842), (128, 34791), (144, 34743),

Gene: Stinson_44 Start: 35487, Stop: 35110, Start Num: 70

Candidate Starts for Stinson_44:

(44, 35538), (Start: 70 @35487 has 98 MA's), (Start: 76 @35451 has 3 MA's), (88, 35397), (Start: 89 @35391 has 1 MA's), (123, 35199), (128, 35184), (144, 35136),

Gene: Strobilo_50 Start: 37026, Stop: 36655, Start Num: 70

Candidate Starts for Strobilo_50:

(44, 37080), (Start: 70 @37026 has 98 MA's), (Start: 76 @36990 has 3 MA's), (80, 36975), (Start: 89 @36930 has 1 MA's), (96, 36870), (106, 36810), (109, 36780), (113, 36768), (122, 36738), (144, 36681),

Gene: Sulley_43 Start: 35224, Stop: 34844, Start Num: 70

Candidate Starts for Sulley_43:

(44, 35275), (Start: 70 @35224 has 98 MA's), (Start: 76 @35188 has 3 MA's), (Start: 89 @35128 has 1 MA's), (123, 34933), (128, 34918), (144, 34870),

Gene: Sunflower1121_49 Start: 36097, Stop: 35708, Start Num: 71

Candidate Starts for Sunflower1121_49:

(Start: 71 @36097 has 13 MA's), (Start: 76 @36067 has 3 MA's), (93, 35965), (97, 35944), (107, 35884), (108, 35869), (115, 35833), (143, 35740),

Gene: Syra333_48 Start: 35764, Stop: 35375, Start Num: 72

Candidate Starts for Syra333_48:

(Start: 72 @35764 has 13 MA's), (Start: 76 @35734 has 3 MA's), (93, 35632), (97, 35611), (107, 35551), (108, 35536), (115, 35500), (125, 35464), (143, 35407), (144, 35401),

Gene: TBond007_45 Start: 35156, Stop: 34734, Start Num: 52

Candidate Starts for TBond007_45:

(Start: 52 @35156 has 4 MA's), (Start: 72 @35123 has 13 MA's), (97, 34967), (106, 34910), (108, 34892), (119, 34844), (144, 34760),

Gene: TClif_48 Start: 35997, Stop: 35698, Start Num: 89

Candidate Starts for TClif_48:

(60, 36099), (78, 36051), (85, 36015), (88, 36003), (Start: 89 @35997 has 1 MA's), (108, 35859), (118, 35814), (124, 35796), (129, 35775), (133, 35763), (145, 35715), (149, 35703),

Gene: Tachez_43 Start: 34941, Stop: 34561, Start Num: 70

Candidate Starts for Tachez_43:

(49, 34977), (Start: 70 @34941 has 98 MA's), (Start: 76 @34905 has 3 MA's), (Start: 89 @34845 has 1 MA's), (128, 34635), (144, 34587),

Gene: TaiwanKao_45 Start: 35220, Stop: 34843, Start Num: 70

Candidate Starts for TaiwanKao_45:

(44, 35271), (Start: 70 @35220 has 98 MA's), (Start: 76 @35184 has 3 MA's), (80, 35169), (Start: 89 @35124 has 1 MA's), (128, 34917), (144, 34869),

Gene: Taquito_47 Start: 36279, Stop: 35926, Start Num: 69

Candidate Starts for Taquito_47:

(35, 36354), (51, 36309), (Start: 65 @36285 has 14 MA's), (Start: 69 @36279 has 17 MA's), (Start: 76 @36240 has 3 MA's), (87, 36189), (96, 36120), (101, 36099), (104, 36078), (106, 36060), (132, 35958),

Gene: Thyatira_43 Start: 36667, Stop: 36266, Start Num: 69

Candidate Starts for Thyatira_43:

(Start: 65 @36673 has 14 MA's), (Start: 69 @36667 has 17 MA's), (Start: 79 @36616 has 3 MA's), (102, 36475), (108, 36424), (124, 36364),

Gene: Tierra_46 Start: 35645, Stop: 35253, Start Num: 71

Candidate Starts for Tierra_46:

(7, 35855), (8, 35846), (Start: 71 @35645 has 13 MA's), (Start: 76 @35615 has 3 MA's), (97, 35492), (103, 35459), (107, 35432), (108, 35417), (115, 35381), (129, 35330), (136, 35309), (144, 35279),

Gene: TiniBug_44 Start: 35873, Stop: 35496, Start Num: 70

Candidate Starts for TiniBug_44:

(44, 35924), (Start: 70 @35873 has 98 MA's), (Start: 76 @35837 has 3 MA's), (Start: 89 @35777 has 1 MA's), (128, 35570), (144, 35522),

Gene: Topper_43 Start: 35096, Stop: 34716, Start Num: 70

Candidate Starts for Topper_43:

(49, 35132), (Start: 70 @35096 has 98 MA's), (Start: 76 @35060 has 3 MA's), (Start: 89 @35000 has 1 MA's), (111, 34841), (128, 34790), (144, 34742),

Gene: Tourach_40 Start: 34296, Stop: 33907, Start Num: 68

Candidate Starts for Tourach_40:

(Start: 68 @34296 has 27 MA's), (Start: 70 @34287 has 98 MA's), (77, 34248), (84, 34218), (Start: 89 @34191 has 1 MA's), (92, 34152), (97, 34128), (105, 34083), (123, 33996), (125, 33984), (128, 33972),

Gene: TreyKay_44 Start: 35164, Stop: 34787, Start Num: 70

Candidate Starts for TreyKay_44:

(44, 35215), (Start: 70 @35164 has 98 MA's), (Start: 76 @35128 has 3 MA's), (80, 35113), (Start: 89 @35068 has 1 MA's), (128, 34861), (144, 34813),

Gene: TribbleTrouble_43 Start: 35018, Stop: 34626, Start Num: 70

Candidate Starts for TribbleTrouble_43:

(40, 35075), (Start: 70 @35018 has 98 MA's), (Start: 76 @34982 has 3 MA's), (108, 34784), (119, 34736), (144, 34652), (145, 34640), (148, 34631),

Gene: TruffulaTree_43 Start: 34975, Stop: 34595, Start Num: 70

Candidate Starts for TruffulaTree_43:

(49, 35011), (Start: 70 @34975 has 98 MA's), (Start: 76 @34939 has 3 MA's), (Start: 89 @34879 has 1 MA's), (128, 34669), (144, 34621),

Gene: Twitch_43 Start: 35098, Stop: 34718, Start Num: 70

Candidate Starts for Twitch_43:

(49, 35134), (Start: 70 @35098 has 98 MA's), (Start: 76 @35062 has 3 MA's), (Start: 89 @35002 has 1 MA's), (111, 34843), (128, 34792), (144, 34744),

Gene: Tyson_37 Start: 32936, Stop: 32526, Start Num: 57

Candidate Starts for Tyson_37:

(Start: 53 @32942 has 7 MA's), (Start: 57 @32936 has 18 MA's), (Start: 67 @32918 has 1 MA's), (Start: 68 @32915 has 27 MA's), (Start: 70 @32906 has 98 MA's), (74, 32873), (Start: 89 @32807 has 1 MA's), (92, 32768), (97, 32744), (105, 32699), (107, 32684), (131, 32591),

Gene: UPIE_38 Start: 32940, Stop: 32524, Start Num: 53

Candidate Starts for UPIE_38:

(Start: 53 @32940 has 7 MA's), (Start: 57 @32934 has 18 MA's), (Start: 68 @32913 has 27 MA's), (Start: 70 @32904 has 98 MA's), (74, 32871), (Start: 89 @32805 has 1 MA's), (92, 32766), (97, 32742), (105, 32697), (131, 32589),

Gene: Unicorn_45 Start: 34877, Stop: 34485, Start Num: 71

Candidate Starts for Unicorn_45:

(1, 35147), (2, 35111), (3, 35096), (7, 35087), (8, 35078), (Start: 71 @34877 has 13 MA's), (Start: 76 @34847 has 3 MA's), (97, 34724), (107, 34664), (108, 34649), (134, 34550), (144, 34511),

Gene: Urkel_44 Start: 35877, Stop: 35500, Start Num: 70

Candidate Starts for Urkel_44:

(44, 35928), (Start: 70 @35877 has 98 MA's), (Start: 76 @35841 has 3 MA's), (Start: 89 @35781 has 1 MA's), (128, 35574), (144, 35526),

Gene: Validus_47 Start: 35733, Stop: 35320, Start Num: 62

Candidate Starts for Validus_47:

(28, 35814), (Start: 62 @35733 has 11 MA's), (86, 35637), (Start: 89 @35622 has 1 MA's), (108, 35484), (124, 35421), (131, 35394), (138, 35376), (149, 35325),

Gene: Veliki_43 Start: 35015, Stop: 34635, Start Num: 70

Candidate Starts for Veliki_43:

(49, 35051), (Start: 70 @35015 has 98 MA's), (Start: 76 @34979 has 3 MA's), (Start: 89 @34919 has 1 MA's), (128, 34709), (144, 34661),

Gene: Vetrrix_40 Start: 34287, Stop: 33898, Start Num: 68

Candidate Starts for Vetrrix_40:

(Start: 68 @34287 has 27 MA's), (Start: 70 @34278 has 98 MA's), (77, 34239), (81, 34215), (84, 34209), (Start: 89 @34182 has 1 MA's), (92, 34143), (97, 34119), (105, 34074), (123, 33987), (128, 33963),

Gene: Wamburgxpress_38 Start: 32949, Stop: 32539, Start Num: 57

Candidate Starts for Wamburgxpress_38:

(Start: 53 @32955 has 7 MA's), (Start: 57 @32949 has 18 MA's), (Start: 68 @32928 has 27 MA's), (Start: 70 @32919 has 98 MA's), (74, 32886), (Start: 89 @32820 has 1 MA's), (92, 32781), (97, 32757), (105, 32712), (131, 32604),

Gene: Waterfoul_42 Start: 34567, Stop: 34160, Start Num: 65

Candidate Starts for Waterfoul_42:

(Start: 65 @34567 has 14 MA's), (Start: 69 @34561 has 17 MA's), (Start: 79 @34510 has 3 MA's), (108, 34318), (124, 34258), (139, 34210),

Gene: Whirlwind_39 Start: 34372, Stop: 33890, Start Num: 30

Candidate Starts for Whirlwind_39:

(Start: 30 @34372 has 1 MA's), (41, 34342), (Start: 53 @34312 has 7 MA's), (Start: 57 @34306 has 18 MA's), (Start: 70 @34276 has 98 MA's), (77, 34237), (81, 34213), (84, 34207), (Start: 89 @34180 has 1 MA's), (92, 34141), (95, 34129), (97, 34117), (103, 34084), (128, 33958), (148, 33895),

Gene: Wigglewigggle_40 Start: 34313, Stop: 33924, Start Num: 68

Candidate Starts for Wigglewigggle_40:

(Start: 68 @34313 has 27 MA's), (Start: 70 @34304 has 98 MA's), (77, 34265), (81, 34241), (84, 34235), (92, 34169), (97, 34145), (105, 34100), (120, 34019), (123, 34013), (125, 34001), (128, 33989),

Gene: Wilder_40 Start: 34286, Stop: 33897, Start Num: 68

Candidate Starts for Wilder_40:

(Start: 68 @34286 has 27 MA's), (Start: 70 @34277 has 98 MA's), (77, 34238), (81, 34214), (84, 34208), (92, 34142), (97, 34118), (105, 34073), (120, 33992), (123, 33986), (125, 33974), (128, 33962),

Gene: Winky_40 Start: 34280, Stop: 33891, Start Num: 68

Candidate Starts for Winky_40:

(Start: 68 @34280 has 27 MA's), (Start: 70 @34271 has 98 MA's), (77, 34232), (81, 34208), (84, 34202), (Start: 89 @34175 has 1 MA's), (92, 34136), (97, 34112), (105, 34067), (123, 33980), (128, 33956),

Gene: Wintermute_47 Start: 36187, Stop: 35828, Start Num: 65

Candidate Starts for Wintermute_47:

(35, 36256), (51, 36211), (Start: 65 @36187 has 14 MA's), (Start: 69 @36181 has 17 MA's), (Start: 76 @36142 has 3 MA's), (87, 36091), (96, 36022), (101, 36001), (104, 35980), (106, 35962), (132, 35860),

Gene: Wyatt2_38 Start: 32935, Stop: 32525, Start Num: 57

Candidate Starts for Wyatt2_38:

(Start: 53 @32941 has 7 MA's), (Start: 57 @32935 has 18 MA's), (Start: 67 @32917 has 1 MA's), (Start: 68 @32914 has 27 MA's), (Start: 70 @32905 has 98 MA's), (74, 32872), (Start: 89 @32806 has 1 MA's), (92, 32767), (97, 32743), (105, 32698), (107, 32683), (131, 32590),

Gene: Ximenita_49 Start: 35950, Stop: 35561, Start Num: 72

Candidate Starts for Ximenita_49:

(29, 36055), (42, 36016), (Start: 72 @35950 has 13 MA's), (Start: 76 @35920 has 3 MA's), (93, 35818), (97, 35797), (98, 35791), (103, 35764), (107, 35737), (108, 35722), (115, 35686), (128, 35641), (143, 35593), (144, 35587), (145, 35575),

Gene: Y10_46 Start: 36100, Stop: 35747, Start Num: 69

Candidate Starts for Y10_46:

(35, 36175), (51, 36130), (Start: 65 @36106 has 14 MA's), (Start: 69 @36100 has 17 MA's), (Start: 76 @36061 has 3 MA's), (87, 36010), (96, 35941), (101, 35920), (104, 35899), (106, 35881), (132, 35779),

Gene: Y2_46 Start: 36100, Stop: 35747, Start Num: 69

Candidate Starts for Y2_46:

(35, 36175), (51, 36130), (Start: 65 @36106 has 14 MA's), (Start: 69 @36100 has 17 MA's), (Start: 76 @36061 has 3 MA's), (87, 36010), (96, 35941), (101, 35920), (104, 35899), (106, 35881), (132, 35779),

Gene: YoureAdopted_42 Start: 35085, Stop: 34804, Start Num: 89

Candidate Starts for YoureAdopted_42:

(Start: 89 @35085 has 1 MA's), (128, 34878), (144, 34830),

Gene: Yuna_49 Start: 36719, Stop: 36363, Start Num: 71

Candidate Starts for Yuna_49:

(Start: 71 @36719 has 13 MA's), (Start: 76 @36689 has 3 MA's), (88, 36635), (Start: 89 @36629 has 1 MA's), (90, 36608), (97, 36566), (107, 36506), (108, 36491), (142, 36404), (144, 36389),

Gene: Yunkel11_46 Start: 34974, Stop: 34585, Start Num: 69

Candidate Starts for Yunkel11_46:

(15, 35112), (16, 35106), (17, 35103), (20, 35094), (25, 35079), (Start: 69 @34974 has 17 MA's), (Start: 70 @34968 has 98 MA's), (Start: 89 @34878 has 1 MA's), (97, 34815), (104, 34776), (108, 34740), (124, 34680), (125, 34674), (147, 34590),

Gene: Zakai_40 Start: 34538, Stop: 34149, Start Num: 68

Candidate Starts for Zakai_40:

(Start: 68 @34538 has 27 MA's), (Start: 70 @34529 has 98 MA's), (77, 34490), (81, 34466), (84, 34460), (92, 34394), (97, 34370), (105, 34325), (120, 34244), (123, 34238), (125, 34226), (128, 34214),

Gene: Zaria_38 Start: 32950, Stop: 32540, Start Num: 57

Candidate Starts for Zaria_38:

(Start: 53 @32956 has 7 MA's), (Start: 57 @32950 has 18 MA's), (Start: 67 @32932 has 1 MA's), (Start: 68 @32929 has 27 MA's), (Start: 70 @32920 has 98 MA's), (74, 32887), (Start: 89 @32821 has 1 MA's), (92, 32782), (97, 32758), (105, 32713), (107, 32698), (131, 32605),

Gene: Zavala_44 Start: 35258, Stop: 34881, Start Num: 70

Candidate Starts for Zavala_44:

(44, 35309), (Start: 70 @35258 has 98 MA's), (Start: 76 @35222 has 3 MA's), (80, 35207), (Start: 89 @35162 has 1 MA's), (128, 34955), (144, 34907),

Gene: ZhongYanYuan_39 Start: 34142, Stop: 33753, Start Num: 68

Candidate Starts for ZhongYanYuan_39:

(Start: 68 @34142 has 27 MA's), (Start: 70 @34133 has 98 MA's), (77, 34094), (84, 34064), (92, 33998), (97, 33974), (105, 33929), (116, 33857), (123, 33842), (125, 33830), (128, 33818),

Gene: ZoeJ_45 Start: 36489, Stop: 36121, Start Num: 70

Candidate Starts for ZoeJ_45:

(44, 36546), (Start: 70 @36489 has 98 MA's), (Start: 76 @36453 has 3 MA's), (Start: 79 @36441 has 3 MA's), (Start: 89 @36393 has 1 MA's), (97, 36330), (106, 36273), (117, 36213), (122, 36201), (144, 36147),