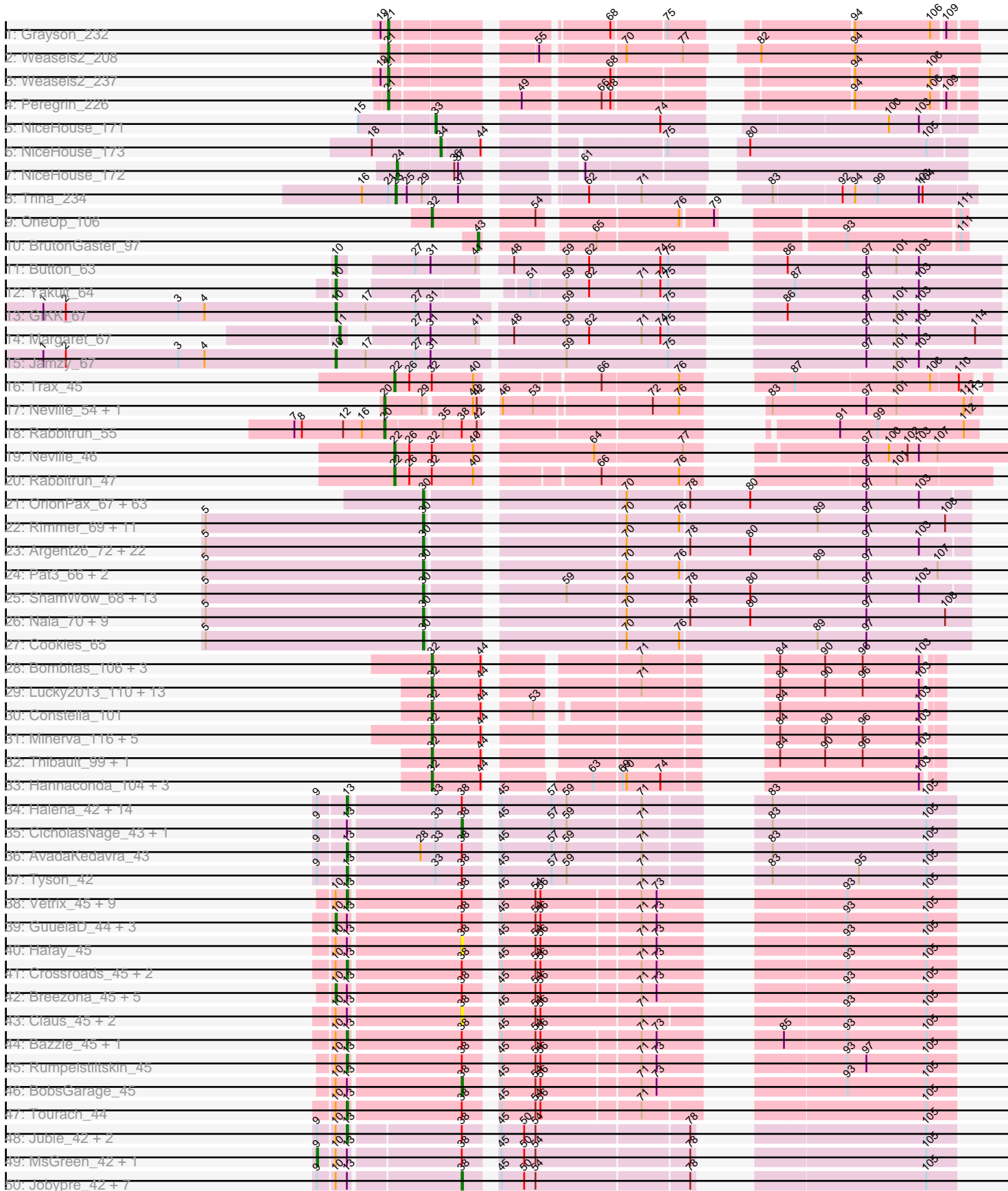
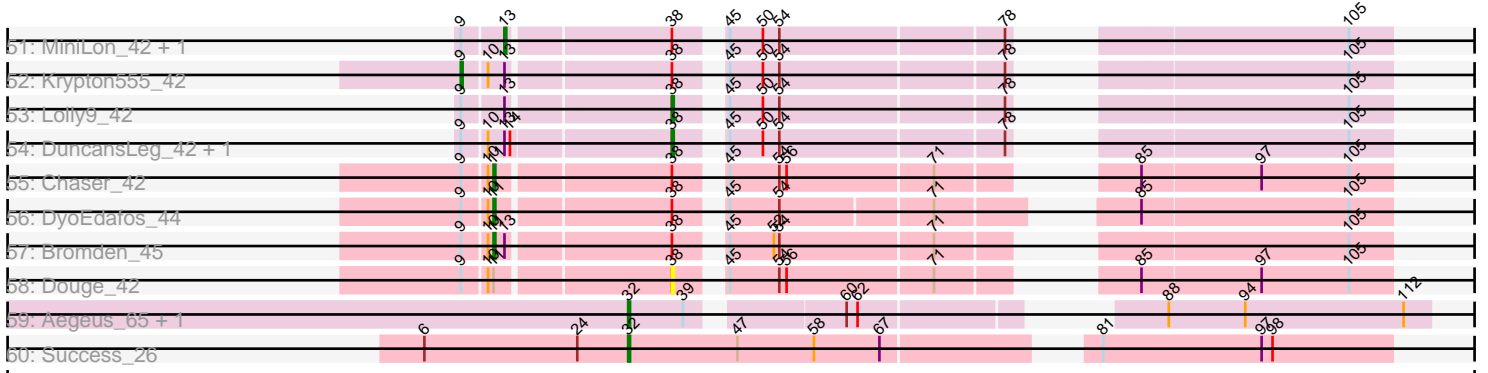


Pham 157547



Pham 157547



Note: Tracks are now grouped by subcluster and scaled. Switching in subcluster is indicated by changes in track color. Track scale is now set by default to display the region 30 bp upstream of start 1 to 30 bp downstream of the last possible start. If this default region is judged to be packed too tightly with annotated starts, the track will be further scaled to only show that region of the ORF with annotated starts. This action will be indicated by adding "Zoomed" to the title. For starts, yellow indicates the location of called starts comprised solely of Glimmer/GeneMark auto-annotations, green indicates the location of called starts with at least 1 manual gene annotation.

Pham 157547 Report

This analysis was run 04/13/24 on database version 558.

Pham number 157547 has 256 members, 22 are drafts.

Phages represented in each track:

- Track 1 : Grayson_232
- Track 2 : Weasels2_208
- Track 3 : Weasels2_237
- Track 4 : Peregrin_226
- Track 5 : NiceHouse_171
- Track 6 : NiceHouse_173
- Track 7 : NiceHouse_172
- Track 8 : Trina_234
- Track 9 : OneUp_106
- Track 10 : BrutonGaster_97
- Track 11 : Button_63
- Track 12 : Yakult_64
- Track 13 : GiKK_67
- Track 14 : Margaret_67
- Track 15 : Jamzy_67
- Track 16 : Trax_45
- Track 17 : Neville_54, Trax_53
- Track 18 : Rabbitrun_55
- Track 19 : Neville_46
- Track 20 : Rabbitrun_47
- Track 21 : OrionPax_67, NelitzaMV_66, Highbury_67, Lilac_70, Eureka_66, Daikon_70, StellaBean_64, Czyszczone1_69, Marshmallow_66, Miniwave_63, TeardropMSU_64, RiverMonster_68, Manda_68, Phaux_70, Pumpkin_71, Sotrice96_69, Ukulele_63, Cactus_71, BigBubba_68, IHOP_66, xkcd_71, Filch_69, Kostya_68, Quallification_69, SophKB_65, Thresher_70, Kanye_65, Tuco_69, Cjw1_68, Murica_71, 244_69, Elite2014_67, Hopey_68, ChosenOne_68, Dusk_65, Murphy_68, Goku_66, Balomoji_68, Pharsalus_65, Maxxinista_70, BadStone_65, Icee_69, Gator_66, HufflyPuff_71, Elph10_68, Phrux_65, Phaja_66, PhatBacter_72, HanKaySha_68, DrDrey_68, Tarkin_67, Rakim_69, Stark_69, Paperbeatsrock_67, Simpliphy_67, NoSleep_69, Saints25_67, Lilpickle_67, ABCat_65, Flypotenuse_64, Myrale_68, Xandras_67, Dumbo_68, ShereKhan_67
- Track 22 : Rimmer_69, YassJohnny_65, Glexan_67, SirDuracell_67, Tomaszewski_63, Sassay_63, Buck_69, Harella_68, DoctorDiddles_67, Bask21_68, Petra64142_72, Willez_63
- Track 23 : Argent26_72, Hoonter_71, GoldenSpark_72, Teaspoon_65, Goldilocks_71, GooberAzure_71, Youngblood_71, AmericanBeauty_75, MadamMonkfish_68, TBrady12_71, Bench_71, Command613_70, Gemini_73,

BaboJay_65, Inca_65, Lilizi_69, Gage_70, Porky_67, Kimchi_72, JeTaime_68,
 Emmina_68, StolenFromERC_71, Holt_73
 • Track 24 : Pat3_66, Amao_68, ChotaBhai_68
 • Track 25 : ShamWow_68, Traaww1_64, Mindy_67, Easy2Say_69, Adnama_72,
 CrystalP_67, BilboSwaggins_67, Asriel_67, Moldemort_71, Toto_66, Henry_66,
 Barbarian_67, Wiggin_70, Stank_72
 • Track 26 : Nala_70, MPhalcon_69, Misfit_69, Terminus_71, Contagion_64,
 Bruin_65, FireRed_72, Nimrod_69, Mosby_64, MISSy_69
 • Track 27 : Cookies_65
 • Track 28 : Bombitas_106, Yeet_109, Schatzie_113, Odette_120
 • Track 29 : Lucky2013_110, Courthouse_108, NihilNomen_120, Ariel_113,
 Phoebus_119, Beem_120, JuicyJay_115, Porcelain_113, HokkenD_108, Squint_111,
 Superphikiman_110, Dove_108, MiaZeal_113, Redno2_112
 • Track 30 : Constella_101
 • Track 31 : Minerva_116, Pound_108, DmpstrDiver_119, Ejimix_113,
 Hughesyang_118, Halley_121
 • Track 32 : Thibault_99, Dallas_119
 • Track 33 : Hannaconda_104, KashFlow_110, Omega_124, LittleE_118
 • Track 34 : Halena_42, DirkDirk_42, Wamburgxpress_43, JoeDirt_42,
 Enceladus_42, OhShagHennessy_42, Appletree2_42, Calm_43, Wyatt2_43,
 Silverleaf_42, LeBron_43, Zaria_43, Rose5_42, Acquire49_43, UPIE_43
 • Track 35 : CicholasNage_43, MAckerman_42
 • Track 36 : AvadaKedavra_43
 • Track 37 : Tyson_42
 • Track 38 : Vetric_45, Lewan_45, Kahlid_45, DrSeegs_45, Gabriela_45, Netyap_45,
 Wilder_45, MkaliMitinis3_45, BigCheese_45, LilDestine_45
 • Track 39 : GuuelaD_44, Nicholasp3_45, Loadrie_44, Wigglewiggles_45
 • Track 40 : Hafay_45
 • Track 41 : Crossroads_45, Gardann_45, Zakai_45
 • Track 42 : Breezona_45, Winky_45, Itos_44, Finemlucis_45, Miley16_45, Faith1_45
 • Track 43 : Claus_45, ZhongYanYuan_43, Baoshan_43
 • Track 44 : Bazzle_45, Archie_45
 • Track 45 : Rumpelstiltskin_45
 • Track 46 : BobsGarage_45
 • Track 47 : Tourach_44
 • Track 48 : Jubie_42, Lumos_42, Whirlwind_43
 • Track 49 : MsGreen_42, Clautastrophe_42
 • Track 50 : Jobypre_42, Bellis_42, Samty_42, Kingsolomon_42, Nicholas_42,
 Finny_42, Snenia_42, Moostard_42
 • Track 51 : MiniLon_42, MiniMac_42
 • Track 52 : Krypton555_42
 • Track 53 : Lolly9_42
 • Track 54 : DuncansLeg_42, Ellson_42
 • Track 55 : Chaser_42
 • Track 56 : DyoEdafos_44
 • Track 57 : Bromden_45
 • Track 58 : Douge_42
 • Track 59 : Aegeus_65, Baudelaire_65
 • Track 60 : Success_26

Summary of Final Annotations (See graph section above for start numbers):

The start number called the most often in the published annotations is 30, it was called in 116 of the 234 non-draft genes in the pham.

Genes that call this "Most Annotated" start:

- 244_69, ABCat_65, Adnama_72, Amao_68, AmericanBeauty_75, Argent26_72, Asriel_67, BaboJay_65, BadStone_65, Balomoji_68, Barbarian_67, Bask21_68, Bench_71, BigBubba_68, BilboSwaggins_67, Bruin_65, Buck_69, Cactus_71, ChosenOne_68, ChotaBhai_68, Cjw1_68, Command613_70, Contagion_64, Cookies_65, CrystalP_67, Czyszczon1_69, Daikon_70, DoctorDiddles_67, DrDrey_68, Dumbo_68, Dusk_65, Easy2Say_69, Elite2014_67, Elph10_68, Emmina_68, Eureka_66, Filch_69, FireRed_72, Flypotenuse_64, Gage_70, Gator_66, Gemini_73, Glexan_67, Goku_66, GoldenSpark_72, Goldilocks_71, GooberAzure_71, HanKaySha_68, Harella_68, Henry_66, Highbury_67, Holt_73, Hoonter_71, Hopey_68, HufflyPuff_71, IHOP_66, Icee_69, Inca_65, JeTaime_68, Kanye_65, Kimchi_72, Kostya_68, Lilac_70, Lilizi_69, Lilpickle_67, MISSy_69, MPhalcon_69, MadamMonkfish_68, Manda_68, Marshmallow_66, Maxxinista_70, Mindy_67, Miniwave_63, Misfit_69, Moldemort_71, Mosby_64, Murica_71, Murphy_68, Myrale_68, Nala_70, NelitzaMV_66, Nimrod_69, NoSleep_69, OrionPax_67, Paperbeatsrock_67, Pat3_66, Petra64142_72, Phaja_66, Pharsalus_65, PhatBacter_72, Phaux_70, Phrux_65, Porky_67, Pumpkin_71, Quallification_69, Rakim_69, Rimmer_69, RiverMonster_68, Saints25_67, Sassay_63, ShamWow_68, ShereKhan_67, Simpliphy_67, SirDuracell_67, SophKB_65, Sotrice96_69, Stank_72, Stark_69, StellaBean_64, StolenFromERC_71, TBrady12_71, Tarkin_67, TeardropMSU_64, Teaspoon_65, Terminus_71, Thresher_70, Tomaszewski_63, Toto_66, Traaww1_64, Tuco_69, Ukulele_63, Wiggin_70, Willez_63, Xandras_67, YassJohnny_65, Youngblood_71, xkcd_71,

Genes that have the "Most Annotated" start but do not call it:

-

Genes that do not have the "Most Annotated" start:

- Acquire49_43, Aegeus_65, Appletree2_42, Archie_45, Ariel_113, AvadaKedavra_43, Baoshan_43, Baudelaire_65, Bazzle_45, Beem_120, Bellis_42, BigCheese_45, BobsGarage_45, Bombitas_106, Breezona_45, Bromden_45, BrutonGaster_97, Button_63, Calm_43, Chaser_42, CicholasNage_43, Claus_45, Clautastrophe_42, Constella_101, Courthouse_108, Crossroads_45, Dallas_119, DirkDirk_42, DmpstrDiver_119, Douge_42, Dove_108, DrSeegs_45, DuncansLeg_42, DyoEdafos_44, Ejimix_113, Ellson_42, Enceladus_42, Faith1_45, Finemlucis_45, Finnry_42, Gabriela_45, Gardann_45, GiKK_67, Grayson_232, GuuelaD_44, Hafay_45, Halena_42, Halley_121, Hannaconda_104, HokkenD_108, Hughesyang_118, Itos_44, Jamzy_67, Jobypre_42, JoeDirt_42, Jubie_42, JuicyJay_115, Kahlid_45, KashFlow_110, Kingsolomon_42, Krypton555_42, LeBron_43, Lewan_45, LilDestine_45, LittleE_118, Loadrie_44, Lolly9_42, Lucky2013_110, Lumos_42, MAckerman_42, Margaret_67, MiaZeal_113, Miley16_45, Minerva_116, MiniLon_42, MiniMac_42, MkaliMitinis3_45, Moostard_42, MsGreen_42, Netyap_45, Neville_46, Neville_54, NiceHouse_171, NiceHouse_172, NiceHouse_173, Nicholas_42, Nicholasp3_45, NihilNomen_120, Odette_120, OhShagHennessy_42, Omega_124, OneUp_106, Peregrin_226, Phoebus_119, Porcelain_113, Pound_108, Rabbitrun_47, Rabbitrun_55, Redno2_112, Rose5_42, Rumpelstiltskin_45, Samty_42, Schatzie_113, Silverleaf_42, Snenia_42, Squint_111, Success_26, Superphikiman_110, Thibault_99, Tourach_44, Trax_45, Trax_53, Trina_234, Tyson_42, UPIE_43, Vetrix_45, Wamburgrxpress_43, Weasels2_208,

Weasels2_237, Whirlwind_43, Wigglewiggles_45, Wilder_45, Winky_45, Wyatt2_43, Yakult_64, Yeet_109, Zakai_45, Zaria_43, ZhongYanYuan_43,

Summary by start number:

Start 9:

- Found in 42 of 256 (16.4%) of genes in pham
- Manual Annotations of this start: 3 of 234
- Called 7.1% of time when present
- Phage (with cluster) where this start called: Clautastrophe_42 (L3), Krypton555_42 (L3), MsGreen_42 (L3),

Start 10:

- Found in 56 of 256 (21.9%) of genes in pham
- Manual Annotations of this start: 14 of 234
- Called 25.0% of time when present
- Phage (with cluster) where this start called: Breezonia_45 (L2), Button_63 (CT), Faith1_45 (L2), Finemlucis_45 (L2), GiKK_67 (CT), GuuelaD_44 (L2), Itos_44 (L2), Jamzy_67 (CT), Loadrie_44 (L2), Miley16_45 (L2), Nicholasp3_45 (L2), Wigglewiggles_45 (L2), Winky_45 (L2), Yakult_64 (CT),

Start 11:

- Found in 5 of 256 (2.0%) of genes in pham
- Manual Annotations of this start: 4 of 234
- Called 80.0% of time when present
- Phage (with cluster) where this start called: Bromden_45 (L4), Chaser_42 (L4), DyoEdafos_44 (L4), Margaret_67 (CT),

Start 13:

- Found in 71 of 256 (27.7%) of genes in pham
- Manual Annotations of this start: 39 of 234
- Called 54.9% of time when present
- Phage (with cluster) where this start called: Acquire49_43 (L1), Appletree2_42 (L1), Archie_45 (L2), AvadaKedavra_43 (L1), Bazzle_45 (L2), BigCheese_45 (L2), Calm_43 (L1), Crossroads_45 (L2), DirkDirk_42 (L1), DrSeegs_45 (L2), Enceladus_42 (L1), Gabriela_45 (L2), Gardann_45 (L2), Halena_42 (L1), JoeDirt_42 (L1), Jubie_42 (L3), Kahlid_45 (L2), LeBron_43 (L1), Lewan_45 (L2), LilDestine_45 (L2), Lumos_42 (L3), MiniLon_42 (L3), MiniMac_42 (L3), MkaliMitinis3_45 (L2), Netyap_45 (L2), OhShagHennessy_42 (L1), Rose5_42 (L1), Rumpelstiltskin_45 (L2), Silverleaf_42 (L1), Tourach_44 (L2), Tyson_42 (L1), UPIE_43 (L1), Vetrrix_45 (L2), Wamburgexpress_43 (L1), Whirlwind_43 (L3), Wilder_45 (L2), Wyatt2_43 (L1), Zakai_45 (L2), Zaria_43 (L1),

Start 20:

- Found in 3 of 256 (1.2%) of genes in pham
- Manual Annotations of this start: 3 of 234
- Called 100.0% of time when present
- Phage (with cluster) where this start called: Neville_54 (DU2), Rabbitrun_55 (DU2), Trax_53 (DU2),

Start 21:

- Found in 5 of 256 (2.0%) of genes in pham
- Manual Annotations of this start: 4 of 234

- Called 80.0% of time when present
- Phage (with cluster) where this start called: Grayson_232 (CB), Peregrin_226 (CB), Weasels2_208 (CB), Weasels2_237 (CB),

Start 22:

- Found in 3 of 256 (1.2%) of genes in pham
- Manual Annotations of this start: 3 of 234
- Called 100.0% of time when present
- Phage (with cluster) where this start called: Neville_46 (DU2), Rabbitrun_47 (DU2), Trax_45 (DU2),

Start 23:

- Found in 1 of 256 (0.4%) of genes in pham
- Manual Annotations of this start: 1 of 234
- Called 100.0% of time when present
- Phage (with cluster) where this start called: Trina_234 (CE),

Start 24:

- Found in 2 of 256 (0.8%) of genes in pham
- Manual Annotations of this start: 1 of 234
- Called 50.0% of time when present
- Phage (with cluster) where this start called: NiceHouse_172 (CE),

Start 30:

- Found in 127 of 256 (49.6%) of genes in pham
- Manual Annotations of this start: 116 of 234
- Called 100.0% of time when present
- Phage (with cluster) where this start called: 244_69 (E), ABCat_65 (E), Adnama_72 (E), Amao_68 (E), AmericanBeauty_75 (E), Argent26_72 (E), Asriel_67 (E), BaboJay_65 (E), BadStone_65 (E), Balomoji_68 (E), Barbarian_67 (E), Bask21_68 (E), Bench_71 (E), BigBubba_68 (E), BilboSwaggins_67 (E), Bruin_65 (E), Buck_69 (E), Cactus_71 (E), ChosenOne_68 (E), ChotaBhai_68 (E), Cjw1_68 (E), Command613_70 (E), Contagion_64 (E), Cookies_65 (E), CrystalP_67 (E), Czystczon1_69 (E), Daikon_70 (E), DoctorDiddles_67 (E), DrDrey_68 (E), Dumbo_68 (E), Dusk_65 (E), Easy2Say_69 (E), Elite2014_67 (E), Elph10_68 (E), Emmina_68 (E), Eureka_66 (E), Filch_69 (E), FireRed_72 (E), Flypotenuse_64 (E), Gage_70 (E), Gator_66 (E), Gemini_73 (E), Glexan_67 (E), Goku_66 (E), GoldenSpark_72 (E), Goldilocks_71 (E), GooberAzure_71 (E), HanKaySha_68 (E), Harella_68 (E), Henry_66 (E), Highbury_67 (E), Holt_73 (E), Hoonter_71 (E), Hopey_68 (E), HufflyPuff_71 (E), IHOP_66 (E), Icee_69 (E), Inca_65 (E), JeTaimie_68 (E), Kanye_65 (E), Kimchi_72 (E), Kostya_68 (E), Lilac_70 (E), Lilizi_69 (E), Lilpickle_67 (E), MISSy_69 (E), MPhalcon_69 (E), MadamMonkfish_68 (E), Manda_68 (E), Marshmallow_66 (E), Maxxinista_70 (E), Mindy_67 (E), Miniwave_63 (E), Misfit_69 (E), Moldemort_71 (E), Mosby_64 (E), Murica_71 (E), Murphy_68 (E), Myrale_68 (E), Nala_70 (E), NelitzaMV_66 (E), Nimrod_69 (E), NoSleep_69 (E), OrionPax_67 (E), Paperbeatsrock_67 (E), Pat3_66 (E), Petra64142_72 (E), Phaja_66 (E), Pharsalus_65 (E), PhatBacter_72 (E), Phaux_70 (E), Phrux_65 (E), Porky_67 (E), Pumpkin_71 (E), Quallification_69 (E), Rakim_69 (E), Rimmer_69 (E), RiverMonster_68 (E), Saints25_67 (E), Sassay_63 (E), ShamWow_68 (E), ShereKhan_67 (E), Simpliphy_67 (E), SirDuracell_67 (E), SophKB_65 (E), Sotrice96_69 (E), Stank_72 (E), Stark_69 (E), StellaBean_64 (E), StolenFromERC_71 (E), TBrady12_71 (E), Tarkin_67 (E), TeardropMSU_64 (E), Teaspoon_65 (E), Terminus_71 (E), Thresher_70 (E), Tomaszewski_63 (E), Toto_66

(E), Traaww1_64 (E), Tuco_69 (E), Ukulele_63 (E), Wiggin_70 (E), Willez_63 (E), Xandras_67 (E), YassJohnny_65 (E), Youngblood_71 (E), xkcd_71 (E),

Start 32:

- Found in 38 of 256 (14.8%) of genes in pham
- Manual Annotations of this start: 33 of 234
- Called 92.1% of time when present
- Phage (with cluster) where this start called: Aegeus_65 (L5), Ariel_113 (J), Baudelaire_65 (L5), Beem_120 (J), Bombitas_106 (J), Constella_101 (J), Courthouse_108 (J), Dallas_119 (J), DmpstrDiver_119 (J), Dove_108 (J), Ejimix_113 (J), Halley_121 (J), Hannaconda_104 (J), HokkenD_108 (J), Hughesyang_118 (J), JuicyJay_115 (J), KashFlow_110 (J), LittleE_118 (J), Lucky2013_110 (J), MiaZeal_113 (J), Minerva_116 (J), NihilNomen_120 (J), Odette_120 (J), Omega_124 (J), OneUp_106 (CQ2), Phoebus_119 (J), Porcelain_113 (J), Pound_108 (J), Redno2_112 (J), Schatzie_113 (J), Squint_111 (J), Success_26 (singleton), Superphikiman_110 (J), Thibault_99 (J), Yeet_109 (J),

Start 33:

- Found in 20 of 256 (7.8%) of genes in pham
- Manual Annotations of this start: 1 of 234
- Called 5.0% of time when present
- Phage (with cluster) where this start called: NiceHouse_171 (CE),

Start 34:

- Found in 1 of 256 (0.4%) of genes in pham
- Manual Annotations of this start: 1 of 234
- Called 100.0% of time when present
- Phage (with cluster) where this start called: NiceHouse_173 (CE),

Start 38:

- Found in 75 of 256 (29.3%) of genes in pham
- Manual Annotations of this start: 10 of 234
- Called 25.3% of time when present
- Phage (with cluster) where this start called: Baoshan_43 (L2), Bellis_42 (L3), BobsGarage_45 (L2), CicholasNage_43 (L1), Claus_45 (L2), Douge_42 (L4), DuncansLeg_42 (L3), Ellson_42 (L3), Finnry_42 (L3), Hafay_45 (L2), Jobypre_42 (L3), Kingsolomon_42 (L3), Lolly9_42 (L3), MAckerman_42 (L1), Moostard_42 (L3), Nicholas_42 (L3), Samty_42 (L3), Snenia_42 (L3), ZhongYanYuan_43 (L2),

Start 43:

- Found in 1 of 256 (0.4%) of genes in pham
- Manual Annotations of this start: 1 of 234
- Called 100.0% of time when present
- Phage (with cluster) where this start called: BrutonGaster_97 (CQ2),

Summary by clusters:

There are 13 clusters represented in this pham: singleton, E, CB, J, CE, L4, L5, L2, L3, L1, CQ2, DU2, CT,

Info for manual annotations of cluster CB:

- Start number 21 was manually annotated 4 times for cluster CB.

Info for manual annotations of cluster CE:

- Start number 23 was manually annotated 1 time for cluster CE.
- Start number 24 was manually annotated 1 time for cluster CE.
- Start number 33 was manually annotated 1 time for cluster CE.
- Start number 34 was manually annotated 1 time for cluster CE.

Info for manual annotations of cluster CQ2:

- Start number 32 was manually annotated 1 time for cluster CQ2.
- Start number 43 was manually annotated 1 time for cluster CQ2.

Info for manual annotations of cluster CT:

- Start number 10 was manually annotated 4 times for cluster CT.
- Start number 11 was manually annotated 1 time for cluster CT.

Info for manual annotations of cluster DU2:

- Start number 20 was manually annotated 3 times for cluster DU2.
- Start number 22 was manually annotated 3 times for cluster DU2.

Info for manual annotations of cluster E:

- Start number 30 was manually annotated 116 times for cluster E.

Info for manual annotations of cluster J:

- Start number 32 was manually annotated 29 times for cluster J.

Info for manual annotations of cluster L1:

- Start number 13 was manually annotated 17 times for cluster L1.
- Start number 38 was manually annotated 1 time for cluster L1.

Info for manual annotations of cluster L2:

- Start number 10 was manually annotated 10 times for cluster L2.
- Start number 13 was manually annotated 17 times for cluster L2.
- Start number 38 was manually annotated 1 time for cluster L2.

Info for manual annotations of cluster L3:

- Start number 9 was manually annotated 3 times for cluster L3.
- Start number 13 was manually annotated 5 times for cluster L3.
- Start number 38 was manually annotated 8 times for cluster L3.

Info for manual annotations of cluster L4:

- Start number 11 was manually annotated 3 times for cluster L4.

Info for manual annotations of cluster L5:

- Start number 32 was manually annotated 2 times for cluster L5.

Gene Information:

Gene: 244_69 Start: 45158, Stop: 45568, Start Num: 30

Candidate Starts for 244_69:

(Start: 30 @45158 has 116 MA's), (70, 45299), (78, 45347), (80, 45395), (97, 45488), (103, 45530),

Gene: ABCat_65 Start: 45505, Stop: 45915, Start Num: 30

Candidate Starts for ABCat_65:

(Start: 30 @45505 has 116 MA's), (70, 45646), (78, 45694), (80, 45742), (97, 45835), (103, 45877),

Gene: Acquire49_43 Start: 34025, Stop: 34441, Start Num: 13

Candidate Starts for Acquire49_43:

(Start: 9 @34004 has 3 MA's), (Start: 13 @34025 has 39 MA's), (Start: 33 @34091 has 1 MA's), (Start: 38 @34112 has 10 MA's), (45, 34130), (57, 34169), (59, 34181), (71, 34238), (83, 34298), (105, 34418),

Gene: Adnama_72 Start: 45528, Stop: 45938, Start Num: 30

Candidate Starts for Adnama_72:

(5, 45354), (Start: 30 @45528 has 116 MA's), (59, 45624), (70, 45669), (78, 45717), (80, 45765), (97, 45858), (103, 45900),

Gene: Aegeus_65 Start: 44400, Stop: 44765, Start Num: 32

Candidate Starts for Aegeus_65:

(Start: 32 @44400 has 33 MA's), (39, 44430), (60, 44502), (62, 44508), (88, 44622), (94, 44664), (112, 44751),

Gene: Amao_68 Start: 44913, Stop: 45326, Start Num: 30

Candidate Starts for Amao_68:

(5, 44739), (Start: 30 @44913 has 116 MA's), (70, 45054), (76, 45096), (89, 45204), (97, 45243), (107, 45300),

Gene: AmericanBeauty_75 Start: 45671, Stop: 46081, Start Num: 30

Candidate Starts for AmericanBeauty_75:

(5, 45497), (Start: 30 @45671 has 116 MA's), (70, 45812), (78, 45860), (80, 45908), (97, 46001), (103, 46043),

Gene: Appletree2_42 Start: 33952, Stop: 34368, Start Num: 13

Candidate Starts for Appletree2_42:

(Start: 9 @33931 has 3 MA's), (Start: 13 @33952 has 39 MA's), (Start: 33 @34018 has 1 MA's), (Start: 38 @34039 has 10 MA's), (45, 34057), (57, 34096), (59, 34108), (71, 34165), (83, 34225), (105, 34345),

Gene: Archie_45 Start: 35560, Stop: 35976, Start Num: 13

Candidate Starts for Archie_45:

(Start: 10 @35551 has 14 MA's), (Start: 13 @35560 has 39 MA's), (Start: 38 @35647 has 10 MA's), (45, 35665), (54, 35692), (56, 35695), (71, 35770), (73, 35782), (85, 35842), (93, 35890), (105, 35953),

Gene: Argent26_72 Start: 45309, Stop: 45719, Start Num: 30

Candidate Starts for Argent26_72:

(5, 45135), (Start: 30 @45309 has 116 MA's), (70, 45450), (78, 45498), (80, 45546), (97, 45639), (103, 45681),

Gene: Ariel_113 Start: 61833, Stop: 62153, Start Num: 32

Candidate Starts for Ariel_113:

(Start: 32 @61833 has 33 MA's), (44, 61872), (71, 61971), (84, 62028), (90, 62064), (96, 62094), (103, 62139),

Gene: Asriel_67 Start: 43865, Stop: 44275, Start Num: 30

Candidate Starts for Asriel_67:

(5, 43691), (Start: 30 @43865 has 116 MA's), (59, 43961), (70, 44006), (78, 44054), (80, 44102), (97, 44195), (103, 44237),

Gene: AvadaKedavra_43 Start: 34034, Stop: 34450, Start Num: 13

Candidate Starts for AvadaKedavra_43:

(Start: 9 @34013 has 3 MA's), (Start: 13 @34034 has 39 MA's), (28, 34088), (Start: 33 @34100 has 1 MA's), (Start: 38 @34121 has 10 MA's), (45, 34139), (57, 34178), (59, 34190), (71, 34247), (83, 34307), (105, 34427),

Gene: BaboJay_65 Start: 44702, Stop: 45112, Start Num: 30

Candidate Starts for BaboJay_65:

(5, 44528), (Start: 30 @44702 has 116 MA's), (70, 44843), (78, 44891), (80, 44939), (97, 45032), (103, 45074),

Gene: BadStone_65 Start: 45074, Stop: 45484, Start Num: 30

Candidate Starts for BadStone_65:

(Start: 30 @45074 has 116 MA's), (70, 45215), (78, 45263), (80, 45311), (97, 45404), (103, 45446),

Gene: Balomoji_68 Start: 45635, Stop: 46045, Start Num: 30

Candidate Starts for Balomoji_68:

(Start: 30 @45635 has 116 MA's), (70, 45776), (78, 45824), (80, 45872), (97, 45965), (103, 46007),

Gene: Baoshan_43 Start: 35304, Stop: 35633, Start Num: 38

Candidate Starts for Baoshan_43:

(Start: 10 @35208 has 14 MA's), (Start: 13 @35217 has 39 MA's), (Start: 38 @35304 has 10 MA's), (45, 35322), (54, 35349), (56, 35352), (71, 35430), (93, 35547), (105, 35610),

Gene: Barbarian_67 Start: 43865, Stop: 44275, Start Num: 30

Candidate Starts for Barbarian_67:

(5, 43691), (Start: 30 @43865 has 116 MA's), (59, 43961), (70, 44006), (78, 44054), (80, 44102), (97, 44195), (103, 44237),

Gene: Bask21_68 Start: 44476, Stop: 44889, Start Num: 30

Candidate Starts for Bask21_68:

(5, 44302), (Start: 30 @44476 has 116 MA's), (70, 44617), (76, 44659), (89, 44767), (97, 44806), (108, 44869),

Gene: Baudelaire_65 Start: 44400, Stop: 44765, Start Num: 32

Candidate Starts for Baudelaire_65:

(Start: 32 @44400 has 33 MA's), (39, 44430), (60, 44502), (62, 44508), (88, 44622), (94, 44664), (112, 44751),

Gene: Bazzle_45 Start: 35592, Stop: 36008, Start Num: 13

Candidate Starts for Bazzle_45:

(Start: 10 @35583 has 14 MA's), (Start: 13 @35592 has 39 MA's), (Start: 38 @35679 has 10 MA's), (45, 35697), (54, 35724), (56, 35727), (71, 35802), (73, 35814), (85, 35874), (93, 35922), (105, 35985),

Gene: Beem_120 Start: 67476, Stop: 67796, Start Num: 32

Candidate Starts for Beem_120:

(Start: 32 @67476 has 33 MA's), (44, 67515), (71, 67614), (84, 67671), (90, 67707), (96, 67737), (103, 67782),

Gene: Bellis_42 Start: 35732, Stop: 36055, Start Num: 38

Candidate Starts for Bellis_42:

(Start: 9 @35627 has 3 MA's), (Start: 10 @35639 has 14 MA's), (Start: 13 @35648 has 39 MA's), (Start: 38 @35732 has 10 MA's), (45, 35750), (50, 35768), (54, 35777), (78, 35894), (105, 36032),

Gene: Bench_71 Start: 45175, Stop: 45585, Start Num: 30

Candidate Starts for Bench_71:

(5, 45001), (Start: 30 @45175 has 116 MA's), (70, 45316), (78, 45364), (80, 45412), (97, 45505), (103, 45547),

Gene: BigBubba_68 Start: 44884, Stop: 45294, Start Num: 30

Candidate Starts for BigBubba_68:

(Start: 30 @44884 has 116 MA's), (70, 45025), (78, 45073), (80, 45121), (97, 45214), (103, 45256),

Gene: BigCheese_45 Start: 35356, Stop: 35772, Start Num: 13

Candidate Starts for BigCheese_45:

(Start: 10 @35347 has 14 MA's), (Start: 13 @35356 has 39 MA's), (Start: 38 @35443 has 10 MA's), (45, 35461), (54, 35488), (56, 35491), (71, 35566), (73, 35578), (93, 35686), (105, 35749),

Gene: BilboSwaggins_67 Start: 45513, Stop: 45923, Start Num: 30

Candidate Starts for BilboSwaggins_67:

(5, 45339), (Start: 30 @45513 has 116 MA's), (59, 45609), (70, 45654), (78, 45702), (80, 45750), (97, 45843), (103, 45885),

Gene: BobsGarage_45 Start: 35443, Stop: 35772, Start Num: 38

Candidate Starts for BobsGarage_45:

(Start: 10 @35347 has 14 MA's), (Start: 13 @35356 has 39 MA's), (Start: 38 @35443 has 10 MA's), (45, 35461), (54, 35488), (56, 35491), (71, 35566), (73, 35578), (93, 35686), (105, 35749),

Gene: Bombitas_106 Start: 63398, Stop: 63718, Start Num: 32

Candidate Starts for Bombitas_106:

(Start: 32 @63398 has 33 MA's), (44, 63437), (71, 63536), (84, 63593), (90, 63629), (96, 63659), (103, 63704),

Gene: Breezona_45 Start: 35347, Stop: 35772, Start Num: 10

Candidate Starts for Breezona_45:

(Start: 10 @35347 has 14 MA's), (Start: 13 @35356 has 39 MA's), (Start: 38 @35443 has 10 MA's), (45, 35461), (54, 35488), (56, 35491), (71, 35566), (73, 35578), (93, 35686), (105, 35749),

Gene: Bromden_45 Start: 35106, Stop: 35519, Start Num: 11

Candidate Starts for Bromden_45:

(Start: 9 @35091 has 3 MA's), (Start: 10 @35103 has 14 MA's), (Start: 11 @35106 has 4 MA's), (Start: 13 @35112 has 39 MA's), (Start: 38 @35196 has 10 MA's), (45, 35214), (52, 35238), (54, 35241), (71, 35322), (105, 35496),

Gene: Bruin_65 Start: 44048, Stop: 44461, Start Num: 30

Candidate Starts for Bruin_65:

(5, 43874), (Start: 30 @44048 has 116 MA's), (70, 44189), (78, 44237), (80, 44285), (97, 44378), (108, 44441),

Gene: BrutonGaster_97 Start: 63227, Stop: 63556, Start Num: 43

Candidate Starts for BrutonGaster_97:

(Start: 43 @63227 has 1 MA's), (65, 63293), (93, 63464), (111, 63551),

Gene: Buck_69 Start: 45756, Stop: 46169, Start Num: 30

Candidate Starts for Buck_69:

(5, 45582), (Start: 30 @45756 has 116 MA's), (70, 45897), (76, 45939), (89, 46047), (97, 46086), (108, 46149),

Gene: Button_63 Start: 43199, Stop: 43654, Start Num: 10

Candidate Starts for Button_63:

(Start: 10 @43199 has 14 MA's), (27, 43241), (31, 43253), (41, 43289), (48, 43304), (59, 43346), (62, 43364), (74, 43421), (75, 43427), (86, 43484), (97, 43547), (101, 43571), (103, 43589),

Gene: Cactus_71 Start: 44529, Stop: 44939, Start Num: 30

Candidate Starts for Cactus_71:

(Start: 30 @44529 has 116 MA's), (70, 44670), (78, 44718), (80, 44766), (97, 44859), (103, 44901),

Gene: Calm_43 Start: 34040, Stop: 34456, Start Num: 13

Candidate Starts for Calm_43:

(Start: 9 @34019 has 3 MA's), (Start: 13 @34040 has 39 MA's), (Start: 33 @34106 has 1 MA's), (Start: 38 @34127 has 10 MA's), (45, 34145), (57, 34184), (59, 34196), (71, 34253), (83, 34313), (105, 34433),

Gene: Chaser_42 Start: 34097, Stop: 34510, Start Num: 11

Candidate Starts for Chaser_42:

(Start: 9 @34082 has 3 MA's), (Start: 10 @34094 has 14 MA's), (Start: 11 @34097 has 4 MA's), (Start: 38 @34187 has 10 MA's), (45, 34205), (54, 34232), (56, 34235), (71, 34313), (85, 34376), (97, 34439), (105, 34487),

Gene: ChosenOne_68 Start: 44532, Stop: 44942, Start Num: 30

Candidate Starts for ChosenOne_68:

(Start: 30 @44532 has 116 MA's), (70, 44673), (78, 44721), (80, 44769), (97, 44862), (103, 44904),

Gene: ChotaBhai_68 Start: 44844, Stop: 45257, Start Num: 30

Candidate Starts for ChotaBhai_68:

(5, 44670), (Start: 30 @44844 has 116 MA's), (70, 44985), (76, 45027), (89, 45135), (97, 45174), (107, 45231),

Gene: CicholasNage_43 Start: 34148, Stop: 34477, Start Num: 38

Candidate Starts for CicholasNage_43:

(Start: 9 @34040 has 3 MA's), (Start: 13 @34061 has 39 MA's), (Start: 33 @34127 has 1 MA's), (Start: 38 @34148 has 10 MA's), (45, 34166), (57, 34205), (59, 34217), (71, 34274), (83, 34334), (105, 34454),

Gene: Cjw1_68 Start: 46229, Stop: 46639, Start Num: 30

Candidate Starts for Cjw1_68:

(Start: 30 @46229 has 116 MA's), (70, 46370), (78, 46418), (80, 46466), (97, 46559), (103, 46601),

Gene: Claus_45 Start: 35462, Stop: 35791, Start Num: 38

Candidate Starts for Claus_45:

(Start: 10 @35366 has 14 MA's), (Start: 13 @35375 has 39 MA's), (Start: 38 @35462 has 10 MA's), (45, 35480), (54, 35507), (56, 35510), (71, 35588), (93, 35705), (105, 35768),

Gene: Clautastrophe_42 Start: 35625, Stop: 36053, Start Num: 9

Candidate Starts for Clautastrophe_42:

(Start: 9 @35625 has 3 MA's), (Start: 10 @35637 has 14 MA's), (Start: 13 @35646 has 39 MA's), (Start: 38 @35730 has 10 MA's), (45, 35748), (50, 35766), (54, 35775), (78, 35892), (105, 36030),

Gene: Command613_70 Start: 45568, Stop: 45978, Start Num: 30

Candidate Starts for Command613_70:

(5, 45394), (Start: 30 @45568 has 116 MA's), (70, 45709), (78, 45757), (80, 45805), (97, 45898), (103, 45940),

Gene: Constella_101 Start: 60252, Stop: 60566, Start Num: 32

Candidate Starts for Constella_101:

(Start: 32 @60252 has 33 MA's), (44, 60291), (53, 60318), (84, 60441), (103, 60552),

Gene: Contagion_64 Start: 44329, Stop: 44742, Start Num: 30

Candidate Starts for Contagion_64:

(5, 44155), (Start: 30 @44329 has 116 MA's), (70, 44470), (78, 44518), (80, 44566), (97, 44659), (108, 44722),

Gene: Cookies_65 Start: 44698, Stop: 45111, Start Num: 30

Candidate Starts for Cookies_65:

(5, 44524), (Start: 30 @44698 has 116 MA's), (70, 44839), (76, 44881), (89, 44989), (97, 45028),

Gene: Courthouse_108 Start: 61433, Stop: 61753, Start Num: 32

Candidate Starts for Courthouse_108:

(Start: 32 @61433 has 33 MA's), (44, 61472), (71, 61571), (84, 61628), (90, 61664), (96, 61694), (103, 61739),

Gene: Crossroads_45 Start: 35358, Stop: 35774, Start Num: 13

Candidate Starts for Crossroads_45:

(Start: 10 @35349 has 14 MA's), (Start: 13 @35358 has 39 MA's), (Start: 38 @35445 has 10 MA's), (45, 35463), (54, 35490), (56, 35493), (71, 35568), (73, 35580), (93, 35688), (105, 35751),

Gene: CrystalP_67 Start: 45513, Stop: 45923, Start Num: 30

Candidate Starts for CrystalP_67:

(5, 45339), (Start: 30 @45513 has 116 MA's), (59, 45609), (70, 45654), (78, 45702), (80, 45750), (97, 45843), (103, 45885),

Gene: Czyszczone1_69 Start: 45038, Stop: 45448, Start Num: 30

Candidate Starts for Czyszczone1_69:

(Start: 30 @45038 has 116 MA's), (70, 45179), (78, 45227), (80, 45275), (97, 45368), (103, 45410),

Gene: Daikon_70 Start: 45656, Stop: 46066, Start Num: 30

Candidate Starts for Daikon_70:

(Start: 30 @45656 has 116 MA's), (70, 45797), (78, 45845), (80, 45893), (97, 45986), (103, 46028),

Gene: Dallas_119 Start: 66991, Stop: 67311, Start Num: 32

Candidate Starts for Dallas_119:

(Start: 32 @66991 has 33 MA's), (44, 67030), (84, 67186), (90, 67222), (96, 67252), (103, 67297),

Gene: DirkDirk_42 Start: 34012, Stop: 34428, Start Num: 13

Candidate Starts for DirkDirk_42:

(Start: 9 @33991 has 3 MA's), (Start: 13 @34012 has 39 MA's), (Start: 33 @34078 has 1 MA's), (Start: 38 @34099 has 10 MA's), (45, 34117), (57, 34156), (59, 34168), (71, 34225), (83, 34285), (105, 34405),

Gene: DmpstrDiver_119 Start: 66397, Stop: 66717, Start Num: 32
Candidate Starts for DmpstrDiver_119:
(Start: 32 @66397 has 33 MA's), (44, 66436), (84, 66592), (90, 66628), (96, 66658), (103, 66703),

Gene: DoctorDiddles_67 Start: 44888, Stop: 45301, Start Num: 30
Candidate Starts for DoctorDiddles_67:
(5, 44714), (Start: 30 @44888 has 116 MA's), (70, 45029), (76, 45071), (89, 45179), (97, 45218), (108, 45281),

Gene: Douge_42 Start: 34125, Stop: 34448, Start Num: 38
Candidate Starts for Douge_42:
(Start: 9 @34020 has 3 MA's), (Start: 10 @34032 has 14 MA's), (Start: 11 @34035 has 4 MA's), (Start: 38 @34125 has 10 MA's), (45, 34143), (54, 34170), (56, 34173), (71, 34251), (85, 34314), (97, 34377), (105, 34425),

Gene: Dove_108 Start: 61905, Stop: 62225, Start Num: 32
Candidate Starts for Dove_108:
(Start: 32 @61905 has 33 MA's), (44, 61944), (71, 62043), (84, 62100), (90, 62136), (96, 62166), (103, 62211),

Gene: DrDrey_68 Start: 45954, Stop: 46364, Start Num: 30
Candidate Starts for DrDrey_68:
(Start: 30 @45954 has 116 MA's), (70, 46095), (78, 46143), (80, 46191), (97, 46284), (103, 46326),

Gene: DrSeegs_45 Start: 35356, Stop: 35772, Start Num: 13
Candidate Starts for DrSeegs_45:
(Start: 10 @35347 has 14 MA's), (Start: 13 @35356 has 39 MA's), (Start: 38 @35443 has 10 MA's), (45, 35461), (54, 35488), (56, 35491), (71, 35566), (73, 35578), (93, 35686), (105, 35749),

Gene: Dumbo_68 Start: 44437, Stop: 44847, Start Num: 30
Candidate Starts for Dumbo_68:
(Start: 30 @44437 has 116 MA's), (70, 44578), (78, 44626), (80, 44674), (97, 44767), (103, 44809),

Gene: DuncansLeg_42 Start: 35754, Stop: 36077, Start Num: 38
Candidate Starts for DuncansLeg_42:
(Start: 9 @35646 has 3 MA's), (Start: 10 @35658 has 14 MA's), (Start: 13 @35667 has 39 MA's), (14, 35670), (Start: 38 @35754 has 10 MA's), (45, 35772), (50, 35790), (54, 35799), (78, 35916), (105, 36054),

Gene: Dusk_65 Start: 44734, Stop: 45144, Start Num: 30
Candidate Starts for Dusk_65:
(Start: 30 @44734 has 116 MA's), (70, 44875), (78, 44923), (80, 44971), (97, 45064), (103, 45106),

Gene: DyoEdafos_44 Start: 34357, Stop: 34776, Start Num: 11
Candidate Starts for DyoEdafos_44:
(Start: 9 @34342 has 3 MA's), (Start: 10 @34354 has 14 MA's), (Start: 11 @34357 has 4 MA's), (Start: 38 @34447 has 10 MA's), (45, 34465), (54, 34492), (71, 34570), (85, 34642), (105, 34753),

Gene: Easy2Say_69 Start: 45975, Stop: 46385, Start Num: 30
Candidate Starts for Easy2Say_69:
(5, 45801), (Start: 30 @45975 has 116 MA's), (59, 46071), (70, 46116), (78, 46164), (80, 46212), (97, 46305), (103, 46347),

Gene: Ejimix_113 Start: 67525, Stop: 67845, Start Num: 32

Candidate Starts for Ejimix_113:

(Start: 32 @67525 has 33 MA's), (44, 67564), (84, 67720), (90, 67756), (96, 67786), (103, 67831),

Gene: Elite2014_67 Start: 44531, Stop: 44941, Start Num: 30

Candidate Starts for Elite2014_67:

(Start: 30 @44531 has 116 MA's), (70, 44672), (78, 44720), (80, 44768), (97, 44861), (103, 44903),

Gene: Ellson_42 Start: 35730, Stop: 36053, Start Num: 38

Candidate Starts for Ellson_42:

(Start: 9 @35622 has 3 MA's), (Start: 10 @35634 has 14 MA's), (Start: 13 @35643 has 39 MA's), (14, 35646), (Start: 38 @35730 has 10 MA's), (45, 35748), (50, 35766), (54, 35775), (78, 35892), (105, 36030),

Gene: Elph10_68 Start: 44536, Stop: 44946, Start Num: 30

Candidate Starts for Elph10_68:

(Start: 30 @44536 has 116 MA's), (70, 44677), (78, 44725), (80, 44773), (97, 44866), (103, 44908),

Gene: Emmina_68 Start: 44438, Stop: 44848, Start Num: 30

Candidate Starts for Emmina_68:

(5, 44264), (Start: 30 @44438 has 116 MA's), (70, 44579), (78, 44627), (80, 44675), (97, 44768), (103, 44810),

Gene: Enceladus_42 Start: 33995, Stop: 34411, Start Num: 13

Candidate Starts for Enceladus_42:

(Start: 9 @33974 has 3 MA's), (Start: 13 @33995 has 39 MA's), (Start: 33 @34061 has 1 MA's), (Start: 38 @34082 has 10 MA's), (45, 34100), (57, 34139), (59, 34151), (71, 34208), (83, 34268), (105, 34388),

Gene: Eureka_66 Start: 45002, Stop: 45412, Start Num: 30

Candidate Starts for Eureka_66:

(Start: 30 @45002 has 116 MA's), (70, 45143), (78, 45191), (80, 45239), (97, 45332), (103, 45374),

Gene: Faith1_45 Start: 35347, Stop: 35772, Start Num: 10

Candidate Starts for Faith1_45:

(Start: 10 @35347 has 14 MA's), (Start: 13 @35356 has 39 MA's), (Start: 38 @35443 has 10 MA's), (45, 35461), (54, 35488), (56, 35491), (71, 35566), (73, 35578), (93, 35686), (105, 35749),

Gene: Filch_69 Start: 44463, Stop: 44873, Start Num: 30

Candidate Starts for Filch_69:

(Start: 30 @44463 has 116 MA's), (70, 44604), (78, 44652), (80, 44700), (97, 44793), (103, 44835),

Gene: Finemlucis_45 Start: 35623, Stop: 36048, Start Num: 10

Candidate Starts for Finemlucis_45:

(Start: 10 @35623 has 14 MA's), (Start: 13 @35632 has 39 MA's), (Start: 38 @35719 has 10 MA's), (45, 35737), (54, 35764), (56, 35767), (71, 35842), (73, 35854), (93, 35962), (105, 36025),

Gene: Finnry_42 Start: 35733, Stop: 36056, Start Num: 38

Candidate Starts for Finnry_42:

(Start: 9 @35628 has 3 MA's), (Start: 10 @35640 has 14 MA's), (Start: 13 @35649 has 39 MA's), (Start: 38 @35733 has 10 MA's), (45, 35751), (50, 35769), (54, 35778), (78, 35895), (105, 36033),

Gene: FireRed_72 Start: 46025, Stop: 46438, Start Num: 30

Candidate Starts for FireRed_72:

(5, 45851), (Start: 30 @46025 has 116 MA's), (70, 46166), (78, 46214), (80, 46262), (97, 46355), (108, 46418),

Gene: Flypotenuse_64 Start: 44519, Stop: 44929, Start Num: 30

Candidate Starts for Flypotenuse_64:

(Start: 30 @44519 has 116 MA's), (70, 44660), (78, 44708), (80, 44756), (97, 44849), (103, 44891),

Gene: Gabriela_45 Start: 35618, Stop: 36034, Start Num: 13

Candidate Starts for Gabriela_45:

(Start: 10 @35609 has 14 MA's), (Start: 13 @35618 has 39 MA's), (Start: 38 @35705 has 10 MA's), (45, 35723), (54, 35750), (56, 35753), (71, 35828), (73, 35840), (93, 35948), (105, 36011),

Gene: Gage_70 Start: 45309, Stop: 45719, Start Num: 30

Candidate Starts for Gage_70:

(5, 45135), (Start: 30 @45309 has 116 MA's), (70, 45450), (78, 45498), (80, 45546), (97, 45639), (103, 45681),

Gene: Gardann_45 Start: 35357, Stop: 35773, Start Num: 13

Candidate Starts for Gardann_45:

(Start: 10 @35348 has 14 MA's), (Start: 13 @35357 has 39 MA's), (Start: 38 @35444 has 10 MA's), (45, 35462), (54, 35489), (56, 35492), (71, 35567), (73, 35579), (93, 35687), (105, 35750),

Gene: Gator_66 Start: 45365, Stop: 45775, Start Num: 30

Candidate Starts for Gator_66:

(Start: 30 @45365 has 116 MA's), (70, 45506), (78, 45554), (80, 45602), (97, 45695), (103, 45737),

Gene: Gemini_73 Start: 45826, Stop: 46236, Start Num: 30

Candidate Starts for Gemini_73:

(5, 45652), (Start: 30 @45826 has 116 MA's), (70, 45967), (78, 46015), (80, 46063), (97, 46156), (103, 46198),

Gene: GiKK_67 Start: 44458, Stop: 44943, Start Num: 10

Candidate Starts for GiKK_67:

(1, 44224), (2, 44242), (3, 44332), (4, 44353), (Start: 10 @44458 has 14 MA's), (17, 44482), (27, 44521), (31, 44533), (59, 44635), (75, 44716), (86, 44773), (97, 44836), (101, 44860), (103, 44878),

Gene: Glexan_67 Start: 45646, Stop: 46059, Start Num: 30

Candidate Starts for Glexan_67:

(5, 45472), (Start: 30 @45646 has 116 MA's), (70, 45787), (76, 45829), (89, 45937), (97, 45976), (108, 46039),

Gene: Goku_66 Start: 44731, Stop: 45141, Start Num: 30

Candidate Starts for Goku_66:

(Start: 30 @44731 has 116 MA's), (70, 44872), (78, 44920), (80, 44968), (97, 45061), (103, 45103),

Gene: GoldenSpark_72 Start: 45309, Stop: 45719, Start Num: 30

Candidate Starts for GoldenSpark_72:

(5, 45135), (Start: 30 @45309 has 116 MA's), (70, 45450), (78, 45498), (80, 45546), (97, 45639), (103, 45681),

Gene: Goldilocks_71 Start: 44810, Stop: 45220, Start Num: 30

Candidate Starts for Goldilocks_71:

(5, 44636), (Start: 30 @44810 has 116 MA's), (70, 44951), (78, 44999), (80, 45047), (97, 45140), (103, 45182),

Gene: GooberAzure_71 Start: 45309, Stop: 45719, Start Num: 30

Candidate Starts for GooberAzure_71:

(5, 45135), (Start: 30 @45309 has 116 MA's), (70, 45450), (78, 45498), (80, 45546), (97, 45639), (103, 45681),

Gene: Grayson_232 Start: 113102, Stop: 113485, Start Num: 21

Candidate Starts for Grayson_232:

(19, 113096), (Start: 21 @113102 has 4 MA's), (68, 113249), (75, 113288), (94, 113396), (106, 113456), (109, 113465),

Gene: GuuelaD_44 Start: 35386, Stop: 35811, Start Num: 10

Candidate Starts for GuuelaD_44:

(Start: 10 @35386 has 14 MA's), (Start: 13 @35395 has 39 MA's), (Start: 38 @35482 has 10 MA's), (45, 35500), (54, 35527), (56, 35530), (71, 35605), (73, 35617), (93, 35725), (105, 35788),

Gene: Hafay_45 Start: 35477, Stop: 35806, Start Num: 38

Candidate Starts for Hafay_45:

(Start: 10 @35381 has 14 MA's), (Start: 13 @35390 has 39 MA's), (Start: 38 @35477 has 10 MA's), (45, 35495), (54, 35522), (56, 35525), (71, 35600), (73, 35612), (93, 35720), (105, 35783),

Gene: Halena_42 Start: 34036, Stop: 34452, Start Num: 13

Candidate Starts for Halena_42:

(Start: 9 @34015 has 3 MA's), (Start: 13 @34036 has 39 MA's), (Start: 33 @34102 has 1 MA's), (Start: 38 @34123 has 10 MA's), (45, 34141), (57, 34180), (59, 34192), (71, 34249), (83, 34309), (105, 34429),

Gene: Halley_121 Start: 67841, Stop: 68161, Start Num: 32

Candidate Starts for Halley_121:

(Start: 32 @67841 has 33 MA's), (44, 67880), (84, 68036), (90, 68072), (96, 68102), (103, 68147),

Gene: HanKaySha_68 Start: 44616, Stop: 45026, Start Num: 30

Candidate Starts for HanKaySha_68:

(Start: 30 @44616 has 116 MA's), (70, 44757), (78, 44805), (80, 44853), (97, 44946), (103, 44988),

Gene: Hannaconda_104 Start: 59803, Stop: 60126, Start Num: 32

Candidate Starts for Hannaconda_104:

(Start: 32 @59803 has 33 MA's), (44, 59842), (63, 59908), (69, 59929), (70, 59932), (74, 59959), (103, 60112),

Gene: Harella_68 Start: 46162, Stop: 46575, Start Num: 30

Candidate Starts for Harella_68:

(5, 45988), (Start: 30 @46162 has 116 MA's), (70, 46303), (76, 46345), (89, 46453), (97, 46492), (108, 46555),

Gene: Henry_66 Start: 44953, Stop: 45363, Start Num: 30

Candidate Starts for Henry_66:

(5, 44779), (Start: 30 @44953 has 116 MA's), (59, 45049), (70, 45094), (78, 45142), (80, 45190), (97, 45283), (103, 45325),

Gene: Highbury_67 Start: 44604, Stop: 45014, Start Num: 30
Candidate Starts for Highbury_67:
(Start: 30 @44604 has 116 MA's), (70, 44745), (78, 44793), (80, 44841), (97, 44934), (103, 44976),

Gene: HokkenD_108 Start: 64913, Stop: 65233, Start Num: 32
Candidate Starts for HokkenD_108:
(Start: 32 @64913 has 33 MA's), (44, 64952), (71, 65051), (84, 65108), (90, 65144), (96, 65174), (103, 65219),

Gene: Holt_73 Start: 45723, Stop: 46133, Start Num: 30
Candidate Starts for Holt_73:
(5, 45549), (Start: 30 @45723 has 116 MA's), (70, 45864), (78, 45912), (80, 45960), (97, 46053), (103, 46095),

Gene: Hoonter_71 Start: 45309, Stop: 45719, Start Num: 30
Candidate Starts for Hoonter_71:
(5, 45135), (Start: 30 @45309 has 116 MA's), (70, 45450), (78, 45498), (80, 45546), (97, 45639), (103, 45681),

Gene: Hokey_68 Start: 45148, Stop: 45558, Start Num: 30
Candidate Starts for Hokey_68:
(Start: 30 @45148 has 116 MA's), (70, 45289), (78, 45337), (80, 45385), (97, 45478), (103, 45520),

Gene: HufflyPuff_71 Start: 45981, Stop: 46391, Start Num: 30
Candidate Starts for HufflyPuff_71:
(Start: 30 @45981 has 116 MA's), (70, 46122), (78, 46170), (80, 46218), (97, 46311), (103, 46353),

Gene: Hughesyang_118 Start: 67297, Stop: 67617, Start Num: 32
Candidate Starts for Hughesyang_118:
(Start: 32 @67297 has 33 MA's), (44, 67336), (84, 67492), (90, 67528), (96, 67558), (103, 67603),

Gene: IHOP_66 Start: 45077, Stop: 45487, Start Num: 30
Candidate Starts for IHOP_66:
(Start: 30 @45077 has 116 MA's), (70, 45218), (78, 45266), (80, 45314), (97, 45407), (103, 45449),

Gene: Icee_69 Start: 44976, Stop: 45386, Start Num: 30
Candidate Starts for Icee_69:
(Start: 30 @44976 has 116 MA's), (70, 45117), (78, 45165), (80, 45213), (97, 45306), (103, 45348),

Gene: Inca_65 Start: 43602, Stop: 44012, Start Num: 30
Candidate Starts for Inca_65:
(5, 43428), (Start: 30 @43602 has 116 MA's), (70, 43743), (78, 43791), (80, 43839), (97, 43932), (103, 43974),

Gene: Itos_44 Start: 34253, Stop: 34678, Start Num: 10
Candidate Starts for Itos_44:
(Start: 10 @34253 has 14 MA's), (Start: 13 @34262 has 39 MA's), (Start: 38 @34349 has 10 MA's), (45, 34367), (54, 34394), (56, 34397), (71, 34472), (73, 34484), (93, 34592), (105, 34655),

Gene: Jamzy_67 Start: 44194, Stop: 44679, Start Num: 10
Candidate Starts for Jamzy_67:
(1, 43960), (2, 43978), (3, 44068), (4, 44089), (Start: 10 @44194 has 14 MA's), (17, 44218), (27, 44257), (31, 44269), (59, 44371), (75, 44452), (97, 44572), (101, 44596), (103, 44614),

Gene: JeTaime_68 Start: 45800, Stop: 46210, Start Num: 30

Candidate Starts for JeTaime_68:

(5, 45626), (Start: 30 @45800 has 116 MA's), (70, 45941), (78, 45989), (80, 46037), (97, 46130), (103, 46172),

Gene: Jobypre_42 Start: 35730, Stop: 36053, Start Num: 38

Candidate Starts for Jobypre_42:

(Start: 9 @35625 has 3 MA's), (Start: 10 @35637 has 14 MA's), (Start: 13 @35646 has 39 MA's), (Start: 38 @35730 has 10 MA's), (45, 35748), (50, 35766), (54, 35775), (78, 35892), (105, 36030),

Gene: JoeDirt_42 Start: 33993, Stop: 34409, Start Num: 13

Candidate Starts for JoeDirt_42:

(Start: 9 @33972 has 3 MA's), (Start: 13 @33993 has 39 MA's), (Start: 33 @34059 has 1 MA's), (Start: 38 @34080 has 10 MA's), (45, 34098), (57, 34137), (59, 34149), (71, 34206), (83, 34266), (105, 34386),

Gene: Jubie_42 Start: 35647, Stop: 36054, Start Num: 13

Candidate Starts for Jubie_42:

(Start: 9 @35626 has 3 MA's), (Start: 10 @35638 has 14 MA's), (Start: 13 @35647 has 39 MA's), (Start: 38 @35731 has 10 MA's), (45, 35749), (50, 35767), (54, 35776), (78, 35893), (105, 36031),

Gene: JuicyJay_115 Start: 68611, Stop: 68931, Start Num: 32

Candidate Starts for JuicyJay_115:

(Start: 32 @68611 has 33 MA's), (44, 68650), (71, 68749), (84, 68806), (90, 68842), (96, 68872), (103, 68917),

Gene: Kahlid_45 Start: 35362, Stop: 35778, Start Num: 13

Candidate Starts for Kahlid_45:

(Start: 10 @35353 has 14 MA's), (Start: 13 @35362 has 39 MA's), (Start: 38 @35449 has 10 MA's), (45, 35467), (54, 35494), (56, 35497), (71, 35572), (73, 35584), (93, 35692), (105, 35755),

Gene: Kanye_65 Start: 44658, Stop: 45068, Start Num: 30

Candidate Starts for Kanye_65:

(Start: 30 @44658 has 116 MA's), (70, 44799), (78, 44847), (80, 44895), (97, 44988), (103, 45030),

Gene: KashFlow_110 Start: 62308, Stop: 62631, Start Num: 32

Candidate Starts for KashFlow_110:

(Start: 32 @62308 has 33 MA's), (44, 62347), (63, 62413), (69, 62434), (70, 62437), (74, 62464), (103, 62617),

Gene: Kimchi_72 Start: 45312, Stop: 45722, Start Num: 30

Candidate Starts for Kimchi_72:

(5, 45138), (Start: 30 @45312 has 116 MA's), (70, 45453), (78, 45501), (80, 45549), (97, 45642), (103, 45684),

Gene: Kingsolomon_42 Start: 35730, Stop: 36053, Start Num: 38

Candidate Starts for Kingsolomon_42:

(Start: 9 @35625 has 3 MA's), (Start: 10 @35637 has 14 MA's), (Start: 13 @35646 has 39 MA's), (Start: 38 @35730 has 10 MA's), (45, 35748), (50, 35766), (54, 35775), (78, 35892), (105, 36030),

Gene: Kostya_68 Start: 45176, Stop: 45586, Start Num: 30

Candidate Starts for Kostya_68:

(Start: 30 @45176 has 116 MA's), (70, 45317), (78, 45365), (80, 45413), (97, 45506), (103, 45548),

Gene: Krypton555_42 Start: 35542, Stop: 35970, Start Num: 9

Candidate Starts for Krypton555_42:

(Start: 9 @35542 has 3 MA's), (Start: 10 @35554 has 14 MA's), (Start: 13 @35563 has 39 MA's), (Start: 38 @35647 has 10 MA's), (45, 35665), (50, 35683), (54, 35692), (78, 35809), (105, 35947),

Gene: LeBron_43 Start: 34037, Stop: 34453, Start Num: 13

Candidate Starts for LeBron_43:

(Start: 9 @34016 has 3 MA's), (Start: 13 @34037 has 39 MA's), (Start: 33 @34103 has 1 MA's), (Start: 38 @34124 has 10 MA's), (45, 34142), (57, 34181), (59, 34193), (71, 34250), (83, 34310), (105, 34430),

Gene: Lewan_45 Start: 35349, Stop: 35765, Start Num: 13

Candidate Starts for Lewan_45:

(Start: 10 @35340 has 14 MA's), (Start: 13 @35349 has 39 MA's), (Start: 38 @35436 has 10 MA's), (45, 35454), (54, 35481), (56, 35484), (71, 35559), (73, 35571), (93, 35679), (105, 35742),

Gene: LilDestine_45 Start: 35354, Stop: 35770, Start Num: 13

Candidate Starts for LilDestine_45:

(Start: 10 @35345 has 14 MA's), (Start: 13 @35354 has 39 MA's), (Start: 38 @35441 has 10 MA's), (45, 35459), (54, 35486), (56, 35489), (71, 35564), (73, 35576), (93, 35684), (105, 35747),

Gene: Lilac_70 Start: 44933, Stop: 45343, Start Num: 30

Candidate Starts for Lilac_70:

(Start: 30 @44933 has 116 MA's), (70, 45074), (78, 45122), (80, 45170), (97, 45263), (103, 45305),

Gene: Lilizi_69 Start: 44646, Stop: 45056, Start Num: 30

Candidate Starts for Lilizi_69:

(5, 44472), (Start: 30 @44646 has 116 MA's), (70, 44787), (78, 44835), (80, 44883), (97, 44976), (103, 45018),

Gene: Lilpickle_67 Start: 44531, Stop: 44941, Start Num: 30

Candidate Starts for Lilpickle_67:

(Start: 30 @44531 has 116 MA's), (70, 44672), (78, 44720), (80, 44768), (97, 44861), (103, 44903),

Gene: LittleE_118 Start: 65723, Stop: 66046, Start Num: 32

Candidate Starts for LittleE_118:

(Start: 32 @65723 has 33 MA's), (44, 65762), (63, 65828), (69, 65849), (70, 65852), (74, 65879), (103, 66032),

Gene: Loadrie_44 Start: 35379, Stop: 35804, Start Num: 10

Candidate Starts for Loadrie_44:

(Start: 10 @35379 has 14 MA's), (Start: 13 @35388 has 39 MA's), (Start: 38 @35475 has 10 MA's), (45, 35493), (54, 35520), (56, 35523), (71, 35598), (73, 35610), (93, 35718), (105, 35781),

Gene: Lolly9_42 Start: 35541, Stop: 35864, Start Num: 38

Candidate Starts for Lolly9_42:

(Start: 9 @35436 has 3 MA's), (Start: 13 @35457 has 39 MA's), (Start: 38 @35541 has 10 MA's), (45, 35559), (50, 35577), (54, 35586), (78, 35703), (105, 35841),

Gene: Lucky2013_110 Start: 61874, Stop: 62194, Start Num: 32

Candidate Starts for Lucky2013_110:

(Start: 32 @61874 has 33 MA's), (44, 61913), (71, 62012), (84, 62069), (90, 62105), (96, 62135), (103, 62180),

Gene: Lumos_42 Start: 35643, Stop: 36050, Start Num: 13

Candidate Starts for Lumos_42:

(Start: 9 @35622 has 3 MA's), (Start: 10 @35634 has 14 MA's), (Start: 13 @35643 has 39 MA's), (Start: 38 @35727 has 10 MA's), (45, 35745), (50, 35763), (54, 35772), (78, 35889), (105, 36027),

Gene: MAckerman_42 Start: 34117, Stop: 34446, Start Num: 38

Candidate Starts for MAckerman_42:

(Start: 9 @34009 has 3 MA's), (Start: 13 @34030 has 39 MA's), (Start: 33 @34096 has 1 MA's), (Start: 38 @34117 has 10 MA's), (45, 34135), (57, 34174), (59, 34186), (71, 34243), (83, 34303), (105, 34423),

Gene: MISSy_69 Start: 45034, Stop: 45447, Start Num: 30

Candidate Starts for MISSy_69:

(5, 44860), (Start: 30 @45034 has 116 MA's), (70, 45175), (78, 45223), (80, 45271), (97, 45364), (108, 45427),

Gene: MPhalcon_69 Start: 45027, Stop: 45440, Start Num: 30

Candidate Starts for MPhalcon_69:

(5, 44853), (Start: 30 @45027 has 116 MA's), (70, 45168), (78, 45216), (80, 45264), (97, 45357), (108, 45420),

Gene: MadamMonkfish_68 Start: 44255, Stop: 44665, Start Num: 30

Candidate Starts for MadamMonkfish_68:

(5, 44081), (Start: 30 @44255 has 116 MA's), (70, 44396), (78, 44444), (80, 44492), (97, 44585), (103, 44627),

Gene: Manda_68 Start: 45536, Stop: 45946, Start Num: 30

Candidate Starts for Manda_68:

(Start: 30 @45536 has 116 MA's), (70, 45677), (78, 45725), (80, 45773), (97, 45866), (103, 45908),

Gene: Margaret_67 Start: 43929, Stop: 44381, Start Num: 11

Candidate Starts for Margaret_67:

(Start: 11 @43929 has 4 MA's), (27, 43968), (31, 43980), (41, 44016), (48, 44031), (59, 44073), (62, 44091), (71, 44133), (74, 44148), (75, 44154), (97, 44274), (101, 44298), (103, 44316), (114, 44361),

Gene: Marshmallow_66 Start: 45804, Stop: 46214, Start Num: 30

Candidate Starts for Marshmallow_66:

(Start: 30 @45804 has 116 MA's), (70, 45945), (78, 45993), (80, 46041), (97, 46134), (103, 46176),

Gene: Maxxinista_70 Start: 44906, Stop: 45316, Start Num: 30

Candidate Starts for Maxxinista_70:

(Start: 30 @44906 has 116 MA's), (70, 45047), (78, 45095), (80, 45143), (97, 45236), (103, 45278),

Gene: MiaZeal_113 Start: 62505, Stop: 62825, Start Num: 32

Candidate Starts for MiaZeal_113:

(Start: 32 @62505 has 33 MA's), (44, 62544), (71, 62643), (84, 62700), (90, 62736), (96, 62766), (103, 62811),

Gene: Miley16_45 Start: 35347, Stop: 35772, Start Num: 10

Candidate Starts for Miley16_45:

(Start: 10 @35347 has 14 MA's), (Start: 13 @35356 has 39 MA's), (Start: 38 @35443 has 10 MA's), (45, 35461), (54, 35488), (56, 35491), (71, 35566), (73, 35578), (93, 35686), (105, 35749),

Gene: Mindy_67 Start: 44119, Stop: 44529, Start Num: 30

Candidate Starts for Mindy_67:

(5, 43945), (Start: 30 @44119 has 116 MA's), (59, 44215), (70, 44260), (78, 44308), (80, 44356), (97, 44449), (103, 44491),

Gene: Minerva_116 Start: 65898, Stop: 66218, Start Num: 32

Candidate Starts for Minerva_116:

(Start: 32 @65898 has 33 MA's), (44, 65937), (84, 66093), (90, 66129), (96, 66159), (103, 66204),

Gene: MiniLon_42 Start: 35458, Stop: 35865, Start Num: 13

Candidate Starts for MiniLon_42:

(Start: 9 @35437 has 3 MA's), (Start: 13 @35458 has 39 MA's), (Start: 38 @35542 has 10 MA's), (45, 35560), (50, 35578), (54, 35587), (78, 35704), (105, 35842),

Gene: MiniMac_42 Start: 35455, Stop: 35862, Start Num: 13

Candidate Starts for MiniMac_42:

(Start: 9 @35434 has 3 MA's), (Start: 13 @35455 has 39 MA's), (Start: 38 @35539 has 10 MA's), (45, 35557), (50, 35575), (54, 35584), (78, 35701), (105, 35839),

Gene: Miniwave_63 Start: 44572, Stop: 44982, Start Num: 30

Candidate Starts for Miniwave_63:

(Start: 30 @44572 has 116 MA's), (70, 44713), (78, 44761), (80, 44809), (97, 44902), (103, 44944),

Gene: Misfit_69 Start: 46046, Stop: 46459, Start Num: 30

Candidate Starts for Misfit_69:

(5, 45872), (Start: 30 @46046 has 116 MA's), (70, 46187), (78, 46235), (80, 46283), (97, 46376), (108, 46439),

Gene: MkaliMitinis3_45 Start: 35358, Stop: 35774, Start Num: 13

Candidate Starts for MkaliMitinis3_45:

(Start: 10 @35349 has 14 MA's), (Start: 13 @35358 has 39 MA's), (Start: 38 @35445 has 10 MA's), (45, 35463), (54, 35490), (56, 35493), (71, 35568), (73, 35580), (93, 35688), (105, 35751),

Gene: Moldemort_71 Start: 45128, Stop: 45538, Start Num: 30

Candidate Starts for Moldemort_71:

(5, 44954), (Start: 30 @45128 has 116 MA's), (59, 45224), (70, 45269), (78, 45317), (80, 45365), (97, 45458), (103, 45500),

Gene: Moostard_42 Start: 35732, Stop: 36055, Start Num: 38

Candidate Starts for Moostard_42:

(Start: 9 @35627 has 3 MA's), (Start: 10 @35639 has 14 MA's), (Start: 13 @35648 has 39 MA's), (Start: 38 @35732 has 10 MA's), (45, 35750), (50, 35768), (54, 35777), (78, 35894), (105, 36032),

Gene: Mosby_64 Start: 44329, Stop: 44742, Start Num: 30

Candidate Starts for Mosby_64:

(5, 44155), (Start: 30 @44329 has 116 MA's), (70, 44470), (78, 44518), (80, 44566), (97, 44659), (108, 44722),

Gene: MsGreen_42 Start: 35625, Stop: 36053, Start Num: 9

Candidate Starts for MsGreen_42:

(Start: 9 @35625 has 3 MA's), (Start: 10 @35637 has 14 MA's), (Start: 13 @35646 has 39 MA's),
(Start: 38 @35730 has 10 MA's), (45, 35748), (50, 35766), (54, 35775), (78, 35892), (105, 36030),

Gene: Murica_71 Start: 45981, Stop: 46391, Start Num: 30

Candidate Starts for Murica_71:

(Start: 30 @45981 has 116 MA's), (70, 46122), (78, 46170), (80, 46218), (97, 46311), (103, 46353),

Gene: Murphy_68 Start: 45418, Stop: 45828, Start Num: 30

Candidate Starts for Murphy_68:

(Start: 30 @45418 has 116 MA's), (70, 45559), (78, 45607), (80, 45655), (97, 45748), (103, 45790),

Gene: Myrale_68 Start: 45669, Stop: 46079, Start Num: 30

Candidate Starts for Myrale_68:

(Start: 30 @45669 has 116 MA's), (70, 45810), (78, 45858), (80, 45906), (97, 45999), (103, 46041),

Gene: Nala_70 Start: 45539, Stop: 45952, Start Num: 30

Candidate Starts for Nala_70:

(5, 45365), (Start: 30 @45539 has 116 MA's), (70, 45680), (78, 45728), (80, 45776), (97, 45869), (108, 45932),

Gene: NelitzaMV_66 Start: 44618, Stop: 45028, Start Num: 30

Candidate Starts for NelitzaMV_66:

(Start: 30 @44618 has 116 MA's), (70, 44759), (78, 44807), (80, 44855), (97, 44948), (103, 44990),

Gene: Netyap_45 Start: 35356, Stop: 35772, Start Num: 13

Candidate Starts for Netyap_45:

(Start: 10 @35347 has 14 MA's), (Start: 13 @35356 has 39 MA's), (Start: 38 @35443 has 10 MA's),
(45, 35461), (54, 35488), (56, 35491), (71, 35566), (73, 35578), (93, 35686), (105, 35749),

Gene: Neville_54 Start: 37372, Stop: 37770, Start Num: 20

Candidate Starts for Neville_54:

(Start: 20 @37372 has 3 MA's), (29, 37402), (40, 37438), (42, 37441), (46, 37447), (53, 37471), (72, 37558),
(76, 37579), (83, 37603), (97, 37678), (101, 37702), (112, 37756), (113, 37762),

Gene: Neville_46 Start: 34837, Stop: 35271, Start Num: 22

Candidate Starts for Neville_46:

(Start: 22 @34837 has 3 MA's), (26, 34849), (Start: 32 @34867 has 33 MA's), (40, 34900), (64, 34981),
(77, 35050), (97, 35149), (100, 35167), (102, 35182), (103, 35191), (107, 35206),

Gene: NiceHouse_171 Start: 97963, Stop: 98331, Start Num: 33

Candidate Starts for NiceHouse_171:

(15, 97906), (Start: 33 @97963 has 1 MA's), (74, 98119), (100, 98266), (103, 98290),

Gene: NiceHouse_173 Start: 98723, Stop: 99082, Start Num: 34

Candidate Starts for NiceHouse_173:

(18, 98672), (Start: 34 @98723 has 1 MA's), (44, 98753), (75, 98870), (80, 98912), (105, 99053),

Gene: NiceHouse_172 Start: 98331, Stop: 98723, Start Num: 24

Candidate Starts for NiceHouse_172:

(Start: 24 @98331 has 1 MA's), (36, 98373), (37, 98376), (61, 98448),

Gene: Nicholas_42 Start: 35730, Stop: 36053, Start Num: 38

Candidate Starts for Nicholas_42:

(Start: 9 @35625 has 3 MA's), (Start: 10 @35637 has 14 MA's), (Start: 13 @35646 has 39 MA's),
(Start: 38 @35730 has 10 MA's), (45, 35748), (50, 35766), (54, 35775), (78, 35892), (105, 36030),

Gene: Nicholasp3_45 Start: 35348, Stop: 35773, Start Num: 10

Candidate Starts for Nicholasp3_45:

(Start: 10 @35348 has 14 MA's), (Start: 13 @35357 has 39 MA's), (Start: 38 @35444 has 10 MA's),
(45, 35462), (54, 35489), (56, 35492), (71, 35567), (73, 35579), (93, 35687), (105, 35750),

Gene: NihilNomen_120 Start: 66563, Stop: 66883, Start Num: 32

Candidate Starts for NihilNomen_120:

(Start: 32 @66563 has 33 MA's), (44, 66602), (71, 66701), (84, 66758), (90, 66794), (96, 66824), (103,
66869),

Gene: Nimrod_69 Start: 46236, Stop: 46649, Start Num: 30

Candidate Starts for Nimrod_69:

(5, 46062), (Start: 30 @46236 has 116 MA's), (70, 46377), (78, 46425), (80, 46473), (97, 46566), (108,
46629),

Gene: NoSleep_69 Start: 44876, Stop: 45286, Start Num: 30

Candidate Starts for NoSleep_69:

(Start: 30 @44876 has 116 MA's), (70, 45017), (78, 45065), (80, 45113), (97, 45206), (103, 45248),

Gene: Odette_120 Start: 66457, Stop: 66777, Start Num: 32

Candidate Starts for Odette_120:

(Start: 32 @66457 has 33 MA's), (44, 66496), (71, 66595), (84, 66652), (90, 66688), (96, 66718), (103,
66763),

Gene: OhShagHennessy_42 Start: 33983, Stop: 34399, Start Num: 13

Candidate Starts for OhShagHennessy_42:

(Start: 9 @33962 has 3 MA's), (Start: 13 @33983 has 39 MA's), (Start: 33 @34049 has 1 MA's), (Start:
38 @34070 has 10 MA's), (45, 34088), (57, 34127), (59, 34139), (71, 34196), (83, 34256), (105,
34376),

Gene: Omega_124 Start: 66872, Stop: 67195, Start Num: 32

Candidate Starts for Omega_124:

(Start: 32 @66872 has 33 MA's), (44, 66911), (63, 66977), (69, 66998), (70, 67001), (74, 67028), (103,
67181),

Gene: OneUp_106 Start: 66594, Stop: 66947, Start Num: 32

Candidate Starts for OneUp_106:

(Start: 32 @66594 has 33 MA's), (54, 66660), (76, 66759), (79, 66783), (111, 66942),

Gene: OrionPax_67 Start: 44624, Stop: 45034, Start Num: 30

Candidate Starts for OrionPax_67:

(Start: 30 @44624 has 116 MA's), (70, 44765), (78, 44813), (80, 44861), (97, 44954), (103, 44996),

Gene: Paperbeatsrock_67 Start: 45250, Stop: 45660, Start Num: 30

Candidate Starts for Paperbeatsrock_67:

(Start: 30 @45250 has 116 MA's), (70, 45391), (78, 45439), (80, 45487), (97, 45580), (103, 45622),

Gene: Pat3_66 Start: 43773, Stop: 44186, Start Num: 30

Candidate Starts for Pat3_66:

(5, 43599), (Start: 30 @43773 has 116 MA's), (70, 43914), (76, 43956), (89, 44064), (97, 44103), (107, 44160),

Gene: Peregrin_226 Start: 113095, Stop: 113481, Start Num: 21

Candidate Starts for Peregrin_226:

(Start: 21 @113095 has 4 MA's), (49, 113182), (66, 113239), (68, 113245), (94, 113392), (106, 113452), (109, 113461),

Gene: Petra64142_72 Start: 46472, Stop: 46885, Start Num: 30

Candidate Starts for Petra64142_72:

(5, 46298), (Start: 30 @46472 has 116 MA's), (70, 46613), (76, 46655), (89, 46763), (97, 46802), (108, 46865),

Gene: Phaja_66 Start: 45076, Stop: 45486, Start Num: 30

Candidate Starts for Phaja_66:

(Start: 30 @45076 has 116 MA's), (70, 45217), (78, 45265), (80, 45313), (97, 45406), (103, 45448),

Gene: Pharsalus_65 Start: 45050, Stop: 45460, Start Num: 30

Candidate Starts for Pharsalus_65:

(Start: 30 @45050 has 116 MA's), (70, 45191), (78, 45239), (80, 45287), (97, 45380), (103, 45422),

Gene: PhatBacter_72 Start: 46025, Stop: 46435, Start Num: 30

Candidate Starts for PhatBacter_72:

(Start: 30 @46025 has 116 MA's), (70, 46166), (78, 46214), (80, 46262), (97, 46355), (103, 46397),

Gene: Phaux_70 Start: 46020, Stop: 46430, Start Num: 30

Candidate Starts for Phaux_70:

(Start: 30 @46020 has 116 MA's), (70, 46161), (78, 46209), (80, 46257), (97, 46350), (103, 46392),

Gene: Phoebus_119 Start: 68421, Stop: 68741, Start Num: 32

Candidate Starts for Phoebus_119:

(Start: 32 @68421 has 33 MA's), (44, 68460), (71, 68559), (84, 68616), (90, 68652), (96, 68682), (103, 68727),

Gene: Phrux_65 Start: 44616, Stop: 45026, Start Num: 30

Candidate Starts for Phrux_65:

(Start: 30 @44616 has 116 MA's), (70, 44757), (78, 44805), (80, 44853), (97, 44946), (103, 44988),

Gene: Porcelain_113 Start: 62820, Stop: 63140, Start Num: 32

Candidate Starts for Porcelain_113:

(Start: 32 @62820 has 33 MA's), (44, 62859), (71, 62958), (84, 63015), (90, 63051), (96, 63081), (103, 63126),

Gene: Porky_67 Start: 44446, Stop: 44856, Start Num: 30

Candidate Starts for Porky_67:

(5, 44272), (Start: 30 @44446 has 116 MA's), (70, 44587), (78, 44635), (80, 44683), (97, 44776), (103, 44818),

Gene: Pound_108 Start: 64917, Stop: 65237, Start Num: 32

Candidate Starts for Pound_108:

(Start: 32 @64917 has 33 MA's), (44, 64956), (84, 65112), (90, 65148), (96, 65178), (103, 65223),

Gene: Pumpkin_71 Start: 45674, Stop: 46084, Start Num: 30

Candidate Starts for Pumpkin_71:

(Start: 30 @45674 has 116 MA's), (70, 45815), (78, 45863), (80, 45911), (97, 46004), (103, 46046),

Gene: Quallification_69 Start: 45658, Stop: 46068, Start Num: 30

Candidate Starts for Quallification_69:

(Start: 30 @45658 has 116 MA's), (70, 45799), (78, 45847), (80, 45895), (97, 45988), (103, 46030),

Gene: Rabbitrun_55 Start: 37898, Stop: 38293, Start Num: 20

Candidate Starts for Rabbitrun_55:

(7, 37826), (8, 37832), (12, 37865), (16, 37880), (Start: 20 @37898 has 3 MA's), (35, 37943), (Start: 38 @37958 has 10 MA's), (42, 37970), (91, 38183), (99, 38213), (112, 38282),

Gene: Rabbitrun_47 Start: 35261, Stop: 35668, Start Num: 22

Candidate Starts for Rabbitrun_47:

(Start: 22 @35261 has 3 MA's), (26, 35273), (Start: 32 @35291 has 33 MA's), (40, 35324), (66, 35405), (76, 35465), (97, 35570), (101, 35594),

Gene: Rakim_69 Start: 45127, Stop: 45537, Start Num: 30

Candidate Starts for Rakim_69:

(Start: 30 @45127 has 116 MA's), (70, 45268), (78, 45316), (80, 45364), (97, 45457), (103, 45499),

Gene: Redno2_112 Start: 64353, Stop: 64673, Start Num: 32

Candidate Starts for Redno2_112:

(Start: 32 @64353 has 33 MA's), (44, 64392), (71, 64491), (84, 64548), (90, 64584), (96, 64614), (103, 64659),

Gene: Rimmer_69 Start: 45366, Stop: 45779, Start Num: 30

Candidate Starts for Rimmer_69:

(5, 45192), (Start: 30 @45366 has 116 MA's), (70, 45507), (76, 45549), (89, 45657), (97, 45696), (108, 45759),

Gene: RiverMonster_68 Start: 45194, Stop: 45604, Start Num: 30

Candidate Starts for RiverMonster_68:

(Start: 30 @45194 has 116 MA's), (70, 45335), (78, 45383), (80, 45431), (97, 45524), (103, 45566),

Gene: Rose5_42 Start: 34025, Stop: 34441, Start Num: 13

Candidate Starts for Rose5_42:

(Start: 9 @34004 has 3 MA's), (Start: 13 @34025 has 39 MA's), (Start: 33 @34091 has 1 MA's), (Start: 38 @34112 has 10 MA's), (45, 34130), (57, 34169), (59, 34181), (71, 34238), (83, 34298), (105, 34418),

Gene: Rumpelstiltskin_45 Start: 35623, Stop: 36039, Start Num: 13

Candidate Starts for Rumpelstiltskin_45:

(Start: 10 @35614 has 14 MA's), (Start: 13 @35623 has 39 MA's), (Start: 38 @35710 has 10 MA's), (45, 35728), (54, 35755), (56, 35758), (71, 35833), (73, 35845), (93, 35953), (97, 35968), (105, 36016),

Gene: Saints25_67 Start: 44604, Stop: 45014, Start Num: 30

Candidate Starts for Saints25_67:

(Start: 30 @44604 has 116 MA's), (70, 44745), (78, 44793), (80, 44841), (97, 44934), (103, 44976),

Gene: Samty_42 Start: 35731, Stop: 36054, Start Num: 38

Candidate Starts for Samty_42:

(Start: 9 @35626 has 3 MA's), (Start: 10 @35638 has 14 MA's), (Start: 13 @35647 has 39 MA's), (Start: 38 @35731 has 10 MA's), (45, 35749), (50, 35767), (54, 35776), (78, 35893), (105, 36031),

Gene: Sassay_63 Start: 43291, Stop: 43704, Start Num: 30

Candidate Starts for Sassay_63:

(5, 43117), (Start: 30 @43291 has 116 MA's), (70, 43432), (76, 43474), (89, 43582), (97, 43621), (108, 43684),

Gene: Schatzie_113 Start: 65339, Stop: 65659, Start Num: 32

Candidate Starts for Schatzie_113:

(Start: 32 @65339 has 33 MA's), (44, 65378), (71, 65477), (84, 65534), (90, 65570), (96, 65600), (103, 65645),

Gene: ShamWow_68 Start: 45513, Stop: 45923, Start Num: 30

Candidate Starts for ShamWow_68:

(5, 45339), (Start: 30 @45513 has 116 MA's), (59, 45609), (70, 45654), (78, 45702), (80, 45750), (97, 45843), (103, 45885),

Gene: ShereKhan_67 Start: 45582, Stop: 45992, Start Num: 30

Candidate Starts for ShereKhan_67:

(Start: 30 @45582 has 116 MA's), (70, 45723), (78, 45771), (80, 45819), (97, 45912), (103, 45954),

Gene: Silverleaf_42 Start: 34025, Stop: 34441, Start Num: 13

Candidate Starts for Silverleaf_42:

(Start: 9 @34004 has 3 MA's), (Start: 13 @34025 has 39 MA's), (Start: 33 @34091 has 1 MA's), (Start: 38 @34112 has 10 MA's), (45, 34130), (57, 34169), (59, 34181), (71, 34238), (83, 34298), (105, 34418),

Gene: Simpliphy_67 Start: 44594, Stop: 45004, Start Num: 30

Candidate Starts for Simpliphy_67:

(Start: 30 @44594 has 116 MA's), (70, 44735), (78, 44783), (80, 44831), (97, 44924), (103, 44966),

Gene: SirDuracell_67 Start: 43865, Stop: 44278, Start Num: 30

Candidate Starts for SirDuracell_67:

(5, 43691), (Start: 30 @43865 has 116 MA's), (70, 44006), (76, 44048), (89, 44156), (97, 44195), (108, 44258),

Gene: Snenia_42 Start: 35731, Stop: 36054, Start Num: 38

Candidate Starts for Snenia_42:

(Start: 9 @35626 has 3 MA's), (Start: 10 @35638 has 14 MA's), (Start: 13 @35647 has 39 MA's), (Start: 38 @35731 has 10 MA's), (45, 35749), (50, 35767), (54, 35776), (78, 35893), (105, 36031),

Gene: SophKB_65 Start: 44269, Stop: 44679, Start Num: 30

Candidate Starts for SophKB_65:

(Start: 30 @44269 has 116 MA's), (70, 44410), (78, 44458), (80, 44506), (97, 44599), (103, 44641),

Gene: Sotrice96_69 Start: 45272, Stop: 45682, Start Num: 30

Candidate Starts for Sotrice96_69:

(Start: 30 @45272 has 116 MA's), (70, 45413), (78, 45461), (80, 45509), (97, 45602), (103, 45644),

Gene: Squint_111 Start: 62624, Stop: 62944, Start Num: 32

Candidate Starts for Squint_111:

(Start: 32 @62624 has 33 MA's), (44, 62663), (71, 62762), (84, 62819), (90, 62855), (96, 62885), (103, 62930),

Gene: Stank_72 Start: 45527, Stop: 45937, Start Num: 30

Candidate Starts for Stank_72:

(5, 45353), (Start: 30 @45527 has 116 MA's), (59, 45623), (70, 45668), (78, 45716), (80, 45764), (97, 45857), (103, 45899),

Gene: Stark_69 Start: 45077, Stop: 45487, Start Num: 30

Candidate Starts for Stark_69:

(Start: 30 @45077 has 116 MA's), (70, 45218), (78, 45266), (80, 45314), (97, 45407), (103, 45449),

Gene: StellaBean_64 Start: 44837, Stop: 45247, Start Num: 30

Candidate Starts for StellaBean_64:

(Start: 30 @44837 has 116 MA's), (70, 44978), (78, 45026), (80, 45074), (97, 45167), (103, 45209),

Gene: StolenFromERC_71 Start: 45309, Stop: 45719, Start Num: 30

Candidate Starts for StolenFromERC_71:

(5, 45135), (Start: 30 @45309 has 116 MA's), (70, 45450), (78, 45498), (80, 45546), (97, 45639), (103, 45681),

Gene: Success_26 Start: 17594, Stop: 17208, Start Num: 32

Candidate Starts for Success_26:

(6, 17702), (Start: 24 @17618 has 1 MA's), (Start: 32 @17594 has 33 MA's), (47, 17534), (58, 17492), (67, 17456), (81, 17366), (97, 17279), (98, 17273),

Gene: Superphikiman_110 Start: 61715, Stop: 62035, Start Num: 32

Candidate Starts for Superphikiman_110:

(Start: 32 @61715 has 33 MA's), (44, 61754), (71, 61853), (84, 61910), (90, 61946), (96, 61976), (103, 62021),

Gene: TBrady12_71 Start: 45011, Stop: 45421, Start Num: 30

Candidate Starts for TBrady12_71:

(5, 44837), (Start: 30 @45011 has 116 MA's), (70, 45152), (78, 45200), (80, 45248), (97, 45341), (103, 45383),

Gene: Tarkin_67 Start: 45259, Stop: 45669, Start Num: 30

Candidate Starts for Tarkin_67:

(Start: 30 @45259 has 116 MA's), (70, 45400), (78, 45448), (80, 45496), (97, 45589), (103, 45631),

Gene: TeardropMSU_64 Start: 44259, Stop: 44669, Start Num: 30

Candidate Starts for TeardropMSU_64:

(Start: 30 @44259 has 116 MA's), (70, 44400), (78, 44448), (80, 44496), (97, 44589), (103, 44631),

Gene: Teaspoon_65 Start: 45153, Stop: 45563, Start Num: 30

Candidate Starts for Teaspoon_65:

(5, 44979), (Start: 30 @45153 has 116 MA's), (70, 45294), (78, 45342), (80, 45390), (97, 45483), (103, 45525),

Gene: Terminus_71 Start: 46046, Stop: 46459, Start Num: 30

Candidate Starts for Terminus_71:

(5, 45872), (Start: 30 @46046 has 116 MA's), (70, 46187), (78, 46235), (80, 46283), (97, 46376), (108, 46439),

Gene: Thibault_99 Start: 60528, Stop: 60848, Start Num: 32

Candidate Starts for Thibault_99:

(Start: 32 @60528 has 33 MA's), (44, 60567), (84, 60723), (90, 60759), (96, 60789), (103, 60834),

Gene: Thresher_70 Start: 46136, Stop: 46546, Start Num: 30

Candidate Starts for Thresher_70:

(Start: 30 @46136 has 116 MA's), (70, 46277), (78, 46325), (80, 46373), (97, 46466), (103, 46508),

Gene: Tomaszewski_63 Start: 44425, Stop: 44838, Start Num: 30

Candidate Starts for Tomaszewski_63:

(5, 44251), (Start: 30 @44425 has 116 MA's), (70, 44566), (76, 44608), (89, 44716), (97, 44755), (108, 44818),

Gene: Toto_66 Start: 45513, Stop: 45923, Start Num: 30

Candidate Starts for Toto_66:

(5, 45339), (Start: 30 @45513 has 116 MA's), (59, 45609), (70, 45654), (78, 45702), (80, 45750), (97, 45843), (103, 45885),

Gene: Tourach_44 Start: 35371, Stop: 35784, Start Num: 13

Candidate Starts for Tourach_44:

(Start: 10 @35362 has 14 MA's), (Start: 13 @35371 has 39 MA's), (Start: 38 @35458 has 10 MA's), (45, 35476), (54, 35503), (56, 35506), (71, 35581), (105, 35761),

Gene: Traaww1_64 Start: 44694, Stop: 45104, Start Num: 30

Candidate Starts for Traaww1_64:

(5, 44520), (Start: 30 @44694 has 116 MA's), (59, 44790), (70, 44835), (78, 44883), (80, 44931), (97, 45024), (103, 45066),

Gene: Trax_45 Start: 35143, Stop: 35541, Start Num: 22

Candidate Starts for Trax_45:

(Start: 22 @35143 has 3 MA's), (26, 35155), (Start: 32 @35173 has 33 MA's), (40, 35206), (66, 35287), (76, 35347), (87, 35398), (101, 35476), (106, 35503), (110, 35524),

Gene: Trax_53 Start: 37657, Stop: 38055, Start Num: 20

Candidate Starts for Trax_53:

(Start: 20 @37657 has 3 MA's), (29, 37687), (40, 37723), (42, 37726), (46, 37732), (53, 37756), (72, 37843), (76, 37864), (83, 37888), (97, 37963), (101, 37987), (112, 38041), (113, 38047),

Gene: Trina_234 Start: 121206, Stop: 121604, Start Num: 23

Candidate Starts for Trina_234:

(16, 121179), (Start: 21 @121200 has 4 MA's), (Start: 23 @121206 has 1 MA's), (25, 121215), (29, 121227), (37, 121254), (62, 121335), (71, 121374), (83, 121449), (92, 121500), (94, 121509), (99, 121527), (103, 121560), (104, 121563),

Gene: Tuco_69 Start: 46021, Stop: 46431, Start Num: 30

Candidate Starts for Tuco_69:

(Start: 30 @46021 has 116 MA's), (70, 46162), (78, 46210), (80, 46258), (97, 46351), (103, 46393),

Gene: Tyson_42 Start: 34026, Stop: 34442, Start Num: 13

Candidate Starts for Tyson_42:

(Start: 9 @34005 has 3 MA's), (Start: 13 @34026 has 39 MA's), (Start: 33 @34092 has 1 MA's), (Start: 38 @34113 has 10 MA's), (45, 34131), (57, 34170), (59, 34182), (71, 34239), (83, 34299), (95, 34365),

(105, 34419),

Gene: UPIE_43 Start: 34009, Stop: 34425, Start Num: 13

Candidate Starts for UPIE_43:

(Start: 9 @33988 has 3 MA's), (Start: 13 @34009 has 39 MA's), (Start: 33 @34075 has 1 MA's), (Start: 38 @34096 has 10 MA's), (45, 34114), (57, 34153), (59, 34165), (71, 34222), (83, 34282), (105, 34402),

Gene: Ukulele_63 Start: 44407, Stop: 44817, Start Num: 30

Candidate Starts for Ukulele_63:

(Start: 30 @44407 has 116 MA's), (70, 44548), (78, 44596), (80, 44644), (97, 44737), (103, 44779),

Gene: Vetric_45 Start: 35363, Stop: 35779, Start Num: 13

Candidate Starts for Vetric_45:

(Start: 10 @35354 has 14 MA's), (Start: 13 @35363 has 39 MA's), (Start: 38 @35450 has 10 MA's), (45, 35468), (54, 35495), (56, 35498), (71, 35573), (73, 35585), (93, 35693), (105, 35756),

Gene: Wamburgexpress_43 Start: 34024, Stop: 34440, Start Num: 13

Candidate Starts for Wamburgexpress_43:

(Start: 9 @34003 has 3 MA's), (Start: 13 @34024 has 39 MA's), (Start: 33 @34090 has 1 MA's), (Start: 38 @34111 has 10 MA's), (45, 34129), (57, 34168), (59, 34180), (71, 34237), (83, 34297), (105, 34417),

Gene: Weasels2_208 Start: 107565, Stop: 107978, Start Num: 21

Candidate Starts for Weasels2_208:

(Start: 21 @107565 has 4 MA's), (55, 107664), (70, 107721), (77, 107766), (82, 107805), (94, 107880),

Gene: Weasels2_237 Start: 116136, Stop: 116522, Start Num: 21

Candidate Starts for Weasels2_237:

(19, 116130), (Start: 21 @116136 has 4 MA's), (68, 116286), (94, 116433), (106, 116493),

Gene: Whirlwind_43 Start: 35405, Stop: 35812, Start Num: 13

Candidate Starts for Whirlwind_43:

(Start: 9 @35384 has 3 MA's), (Start: 10 @35396 has 14 MA's), (Start: 13 @35405 has 39 MA's), (Start: 38 @35489 has 10 MA's), (45, 35507), (50, 35525), (54, 35534), (78, 35651), (105, 35789),

Gene: Wiggin_70 Start: 45095, Stop: 45505, Start Num: 30

Candidate Starts for Wiggin_70:

(5, 44921), (Start: 30 @45095 has 116 MA's), (59, 45191), (70, 45236), (78, 45284), (80, 45332), (97, 45425), (103, 45467),

Gene: Wigglewigg_45 Start: 35380, Stop: 35805, Start Num: 10

Candidate Starts for Wigglewigg_45:

(Start: 10 @35380 has 14 MA's), (Start: 13 @35389 has 39 MA's), (Start: 38 @35476 has 10 MA's), (45, 35494), (54, 35521), (56, 35524), (71, 35599), (73, 35611), (93, 35719), (105, 35782),

Gene: Wilder_45 Start: 35362, Stop: 35778, Start Num: 13

Candidate Starts for Wilder_45:

(Start: 10 @35353 has 14 MA's), (Start: 13 @35362 has 39 MA's), (Start: 38 @35449 has 10 MA's), (45, 35467), (54, 35494), (56, 35497), (71, 35572), (73, 35584), (93, 35692), (105, 35755),

Gene: Willez_63 Start: 43291, Stop: 43704, Start Num: 30

Candidate Starts for Willez_63:

(5, 43117), (Start: 30 @43291 has 116 MA's), (70, 43432), (76, 43474), (89, 43582), (97, 43621), (108, 43684),

Gene: Winky_45 Start: 35347, Stop: 35772, Start Num: 10

Candidate Starts for Winky_45:

(Start: 10 @35347 has 14 MA's), (Start: 13 @35356 has 39 MA's), (Start: 38 @35443 has 10 MA's), (45, 35461), (54, 35488), (56, 35491), (71, 35566), (73, 35578), (93, 35686), (105, 35749),

Gene: Wyatt2_43 Start: 34025, Stop: 34441, Start Num: 13

Candidate Starts for Wyatt2_43:

(Start: 9 @34004 has 3 MA's), (Start: 13 @34025 has 39 MA's), (Start: 33 @34091 has 1 MA's), (Start: 38 @34112 has 10 MA's), (45, 34130), (57, 34169), (59, 34181), (71, 34238), (83, 34298), (105, 34418),

Gene: Xandras_67 Start: 44506, Stop: 44916, Start Num: 30

Candidate Starts for Xandras_67:

(Start: 30 @44506 has 116 MA's), (70, 44647), (78, 44695), (80, 44743), (97, 44836), (103, 44878),

Gene: Yakult_64 Start: 44046, Stop: 44489, Start Num: 10

Candidate Starts for Yakult_64:

(Start: 10 @44046 has 14 MA's), (51, 44154), (59, 44181), (62, 44199), (71, 44241), (74, 44256), (75, 44262), (87, 44325), (97, 44382), (103, 44424),

Gene: YassJohnny_65 Start: 44464, Stop: 44877, Start Num: 30

Candidate Starts for YassJohnny_65:

(5, 44290), (Start: 30 @44464 has 116 MA's), (70, 44605), (76, 44647), (89, 44755), (97, 44794), (108, 44857),

Gene: Yeet_109 Start: 64277, Stop: 64597, Start Num: 32

Candidate Starts for Yeet_109:

(Start: 32 @64277 has 33 MA's), (44, 64316), (71, 64415), (84, 64472), (90, 64508), (96, 64538), (103, 64583),

Gene: Youngblood_71 Start: 45976, Stop: 46386, Start Num: 30

Candidate Starts for Youngblood_71:

(5, 45802), (Start: 30 @45976 has 116 MA's), (70, 46117), (78, 46165), (80, 46213), (97, 46306), (103, 46348),

Gene: Zakai_45 Start: 35614, Stop: 36030, Start Num: 13

Candidate Starts for Zakai_45:

(Start: 10 @35605 has 14 MA's), (Start: 13 @35614 has 39 MA's), (Start: 38 @35701 has 10 MA's), (45, 35719), (54, 35746), (56, 35749), (71, 35824), (73, 35836), (93, 35944), (105, 36007),

Gene: Zaria_43 Start: 34040, Stop: 34456, Start Num: 13

Candidate Starts for Zaria_43:

(Start: 9 @34019 has 3 MA's), (Start: 13 @34040 has 39 MA's), (Start: 33 @34106 has 1 MA's), (Start: 38 @34127 has 10 MA's), (45, 34145), (57, 34184), (59, 34196), (71, 34253), (83, 34313), (105, 34433),

Gene: ZhongYanYuan_43 Start: 35304, Stop: 35633, Start Num: 38

Candidate Starts for ZhongYanYuan_43:

(Start: 10 @35208 has 14 MA's), (Start: 13 @35217 has 39 MA's), (Start: 38 @35304 has 10 MA's),
(45, 35322), (54, 35349), (56, 35352), (71, 35430), (93, 35547), (105, 35610),

Gene: xkcd_71 Start: 46166, Stop: 46576, Start Num: 30

Candidate Starts for xkcd_71:

(Start: 30 @46166 has 116 MA's), (70, 46307), (78, 46355), (80, 46403), (97, 46496), (103, 46538),