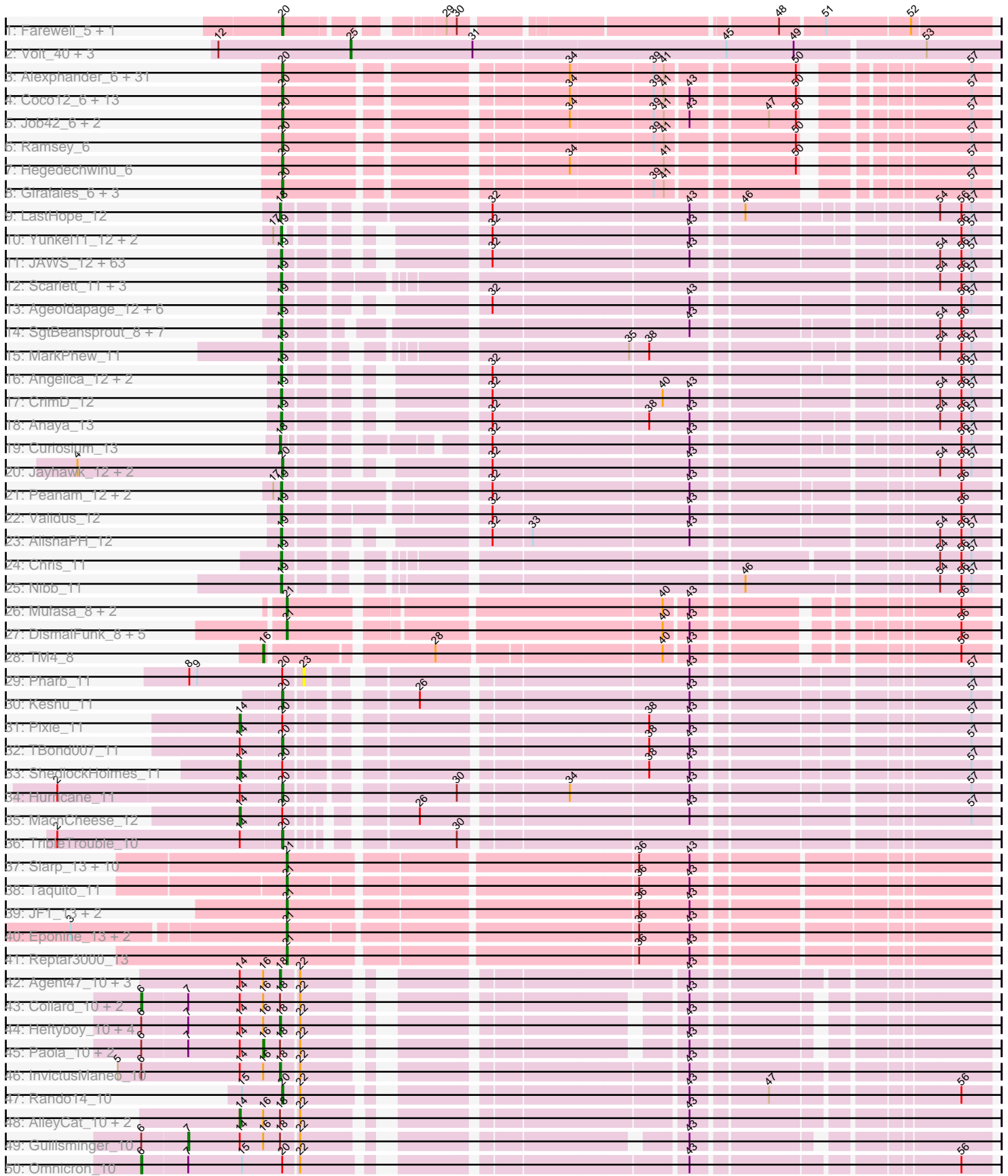


Pham 157551



Note: Tracks are now grouped by subcluster and scaled. Switching in subcluster is indicated by changes in track color. Track scale is now set by default to display the region 30 bp upstream of start 1 to 30 bp downstream of the last possible start. If this default region is judged to be packed too tightly with annotated starts, the track will be further scaled to only show that region of the ORF with annotated starts. This action will be indicated by adding "Zoomed" to the title. For starts, yellow indicates the location of called starts comprised solely of Glimmer/GeneMark auto-annotations, green indicates the location of called starts with at least 1 manual gene annotation.

Pham 157551 Report

This analysis was run 04/13/24 on database version 558.

Pham number 157551 has 249 members, 18 are drafts.

Phages represented in each track:

- Track 1 : Farewell_5, Sparky_5
- Track 2 : Volt_40, Fryberger_38, Ronaldo_41, Ziko_41
- Track 3 : Alexphander_6, Leozinho_6, SimranZ1_6, Frankie_6, Beakin_6, BigPhil_6, Bobi_6, Kingsley_6, Lorde_6, RockyHorror_6, OwlsT2W_6, Seagreen_6, Boomer_6, Enby_6, BuzzLyseyear_6, Juice456_6, JalFarm20_6, Flathead_6, DirtMcgirt_6, Stap_6, Plumbus_6, Cerasum_6, LittleShirley_6, Sarma624_6, Oksu_6, DosHalletts_6, UncleRicky_6, Kimberlium_6, Drago_6, Squirty_6, Velveteen_6, Tootsieroll_6
- Track 4 : Coco12_6, TootsiePop_6, Rialto_6, Starcevich_6, ChickenDinner_6, Piper2020_6, DocMcStuffins_6, Mova_6, Pollywog_6, DaWorst_6, Awesomesauce_6, Spikelee_6, Misha28_6, Totinger_6
- Track 5 : Job42_6, Marker_6, Madiba_6
- Track 6 : Ramsey_6
- Track 7 : Hegedechwinu_6
- Track 8 : Girafales_6, Mozy_6, Cornucopia_6, Quico_6
- Track 9 : LastHope_12
- Track 10 : Yunkel11_12, Guanica15_12, Efra2_12
- Track 11 : JAWS_12, Tiri_12, Capricorn_12, CheetoDust_12, SamuelLPlaqson_12, Atiba_12, Blizzard_12, Adonis_12, Lunahalos_12, BEEST_12, Belladonna_12, Adepagia_12, Emerson_12, Tachez_12, HedwigODU_12, Beezoo_12, Homura_12, YoureAdopted_11, Spock_12, Twitch_12, MeaningOfLife_12, TaiwanKao_12, ShiaSurprise_12, Ganymede_12, Durfee_12, Llorens_12, TreyKay_12, Rosmarinus_12, Prithvi_12, BarrelRoll_12, CaseJules_12, Jarvi_12, TruffulaTree_12, Mynx_12, Asayake_12, Peel_12, BGlluviae_12, CREW_12, TiniBug_12, DrHayes_12, Geraldini_12, Megsy_12, Piatt_12, Padfoot_12, Apocalypse_12, Padpat_12, Boiiii_12, Topper_12, Dalmuri_12, Hyperbowlee_12, Bella96_12, Ramen_12, Inky_12, LindNT_12, Jeckyll_12, Zabiza_12, ActinUp_12, BaghaKamala_12, Veliki_12, Urkel_12, Zavala_12, Pokerus_11, QuincyRose_11, Joy99_12
- Track 12 : Scarlett_11, LeMond_11, KiSi_11, Oscar_11
- Track 13 : Ageofdapage_12, Murucutumbu_12, Dole_12, Devera_12, Illumine_12, LaterM_12, Stinson_12
- Track 14 : SgtBeansprout_8, Enkosi_8, Mdavu_8, Nutello_8, Amelie_8, Nikao_8, LilPharaoh_8, Binglebops_8
- Track 15 : MarkPhew_11
- Track 16 : Angelica_12, Sulley_12, Deby_12
- Track 17 : CrimD_12

- Track 18 : Anaya_13
- Track 19 : Curiosium_13
- Track 20 : Jayhawk_12, Rapunzel97_12, Slimphazie_12
- Track 21 : Peanam_12, Shaobing_12, Niklas_12
- Track 22 : Validus_12
- Track 23 : AlishaPH_12
- Track 24 : Chris_11
- Track 25 : Nibb_11
- Track 26 : Mufasa_8, BoostSeason_8, ZoeJ_8
- Track 27 : DismalFunk_8, Findley_8, DismalStressor_8, Milly_8, Marcoliusprime_8, Strobilo_9
- Track 28 : TM4_8
- Track 29 : Pharb_11
- Track 30 : Keshu_11
- Track 31 : Pixie_11
- Track 32 : TBond007_11
- Track 33 : ShedlockHolmes_11
- Track 34 : Hurricane_11
- Track 35 : MacnCheese_12
- Track 36 : TribbleTrouble_10
- Track 37 : Slarp_13, Fionnbharth_13, Wintermute_13, OmniCritical_13, Mitti_13, Chancellor_13, MissDaisy_13, Malthus_13, SamScheppers_11, Cheetobro_13, Patt_13
- Track 38 : Taquito_11
- Track 39 : JF1_13, Y10_13, Y2_13
- Track 40 : Eponine_13, Ruthiejr_12, Juliette_13
- Track 41 : Reptar3000_13
- Track 42 : Agent47_10, Edugator_9, Psycho_10, Dadosky_10
- Track 43 : Collard_10, Gengar_10, Leston_10
- Track 44 : Heftyboy_10, Thyatira_10, Miryou_10, SoSeph_10, Waterfoul_10
- Track 45 : Paola_10, Feyre_10, OkiRoe_10
- Track 46 : InvictusManeo_10
- Track 47 : Rando14_10
- Track 48 : AlleyCat_10, Larva_10, Kratio_9
- Track 49 : Guillsminger_10
- Track 50 : Omnicron_10
- Track 51 : PhelpsODU_11, Unicorn_11
- Track 52 : Syra333_11
- Track 53 : Ximenita_12
- Track 54 : SirPhilip_11
- Track 55 : Amgine_10, Fefferhead_11, Ellie_9
- Track 56 : Amohnition_11, DarthP_11
- Track 57 : Cain_11, Phrank_11, Bryler_11, Sunflower1121_10
- Track 58 : Marshawn_13
- Track 59 : TClif_11
- Track 60 : Hammy_11
- Track 61 : Yuna_12
- Track 62 : Tierra_11
- Track 63 : Ekdilam_9
- Track 64 : Krueger_11
- Track 65 : Shadow1_10
- Track 66 : Aminay_10
- Track 67 : Boilgate_9

- Track 68 : DS6A_10

Summary of Final Annotations (See graph section above for start numbers):

The start number called the most often in the published annotations is 19, it was called in 96 of the 231 non-draft genes in the pham.

Genes that call this "Most Annotated" start:

- ActinUp_12, Adephegia_12, Adonis_12, Ageofdapage_12, AlishaPH_12, Amelie_8, Anaya_13, Angelica_12, Apocalypse_12, Asayake_12, Atiba_12, BEEST_12, BGIlluviae_12, BaghaKamala_12, BarrelRoll_12, Beezoo_12, Bella96_12, Belladonna_12, Biglebops_8, Blizzard_12, Boiiii_12, CREW_12, Capricorn_12, CaseJules_12, CheetoDust_12, Chris_11, CrimD_12, Dalmuri_12, Deby_12, Devera_12, Dole_12, DrHayes_12, Durfee_12, Efra2_12, Emerson_12, Enkosi_8, Ganymede_12, Geraldini_12, Guanica15_12, HedwigODU_12, Homura_12, Hyperbowlee_12, Illumine_12, Inky_12, JAWS_12, Jarvi_12, Jeckyll_12, Joy99_12, KiSi_11, LaterM_12, LeMond_11, LilPharaoh_8, LindNT_12, Llorens_12, Lunahalos_12, MarkPhew_11, Marshawn_13, Mdavu_8, MeaningOfLife_12, Megsy_12, Murucutumbu_12, Mynx_12, Nibb_11, Nikao_8, Niklas_12, Nutello_8, Oscar_11, Padfoot_12, Padpat_12, Peanam_12, Peel_12, Piatt_12, Pokerus_11, Prithvi_12, QuincyRose_11, Ramen_12, Rosmarinus_12, SamuelLPlaqson_12, Scarlett_11, SgtBeansprout_8, Shaobing_12, ShiaSurprise_12, Spock_12, Stinson_12, Sulley_12, Tachez_12, TaiwanKao_12, TiniBug_12, Tiri_12, Topper_12, TreyKay_12, TruffulaTree_12, Twitch_12, Urkel_12, Validus_12, Veliki_12, YoureAdopted_11, Yunkel11_12, Zabiza_12, Zavala_12,

Genes that have the "Most Annotated" start but do not call it:

-

Genes that do not have the "Most Annotated" start:

- Agent47_10, Alexphander_6, AlleyCat_10, Amgine_10, Aminay_10, Amohnition_11, Awesomesauce_6, Beakin_6, BigPhil_6, Bobi_6, Boilgate_9, Boomer_6, BoostSeason_8, Bryler_11, BuzzLyseyear_6, Cain_11, Cerasum_6, Chancellor_13, Cheetobro_13, ChickenDinner_6, Coco12_6, Collard_10, Cornucopia_6, Curiosium_13, DS6A_10, DaWorst_6, Dadosky_10, DarthP_11, DirtMcGirt_6, DismalFunk_8, DismalStressor_8, DocMcStuffins_6, DosHalletts_6, Drago_6, Edugator_9, Ekdilam_9, Ellie_9, Enby_6, Eponine_13, Farewell_5, Fefferhead_11, Feyre_10, Findley_8, Fionnbharth_13, Flathead_6, Frankie_6, Fryberger_38, Gengar_10, Girafales_6, Guillsminger_10, Hammy_11, Heftyboy_10, Hegedechwinu_6, Hurricane_11, InvictusManeo_10, JF1_13, JalFarm20_6, Jayhawk_12, Job42_6, Juice456_6, Juliette_13, Keshu_11, Kimberlium_6, Kingsley_6, Kratio_9, Krueger_11, Larva_10, LastHope_12, Leozinho_6, Leston_10, LittleShirley_6, Lorde_6, MacnCheese_12, Madiba_6, Malthus_13, Marcoliusprime_8, Marker_6, Milly_8, Miryou_10, Misha28_6, MissDaisy_13, Mitti_13, Mova_6, Mozy_6, Mufasa_8, OkiRoe_10, Oksu_6, OmniCritical_13, Omnicron_10, OwlsT2W_6, Paola_10, Patt_13, Pharb_11, PhelpsODU_11, Phrank_11, Piper2020_6, Pixie_11, Plumbus_6, Pollywog_6, Psycho_10, Quico_6, Ramsey_6, Rando14_10, Rapunzel97_12, Reptar3000_13, Rialto_6, RockyHorror_6, Ronaldo_41, Ruthiejr_12, SamScheppers_11, Sarma624_6, Seagreen_6, Shadow1_10, ShedlockHolmes_11, SimranZ1_6, SirPhilip_11, Slarp_13,

Slimphazie_12, SoSeph_10, Sparky_5, Spikelee_6, Squirty_6, Stap_6, Starcevich_6, Strobilo_9, Sunflower1121_10, Syra333_11, TBond007_11, TClif_11, TM4_8, Taquito_11, Thyatira_10, Tierra_11, TootsiePop_6, Tootsieroll_6, Totinger_6, TribbleTrouble_10, UncleRicky_6, Unicorn_11, Velveteen_6, Volt_40, Waterfoul_10, Wintermute_13, Ximenita_12, Y10_13, Y2_13, Yuna_12, Ziko_41, ZoeJ_8,

Summary by start number:

Start 6:

- Found in 14 of 249 (5.6%) of genes in pham
- Manual Annotations of this start: 4 of 231
- Called 28.6% of time when present
- Phage (with cluster) where this start called: Collard_10 (K5), Gengar_10 (K5), Leston_10 (K5), Omnicron_10 (K5),

Start 7:

- Found in 13 of 249 (5.2%) of genes in pham
- Manual Annotations of this start: 1 of 231
- Called 7.7% of time when present
- Phage (with cluster) where this start called: Guillsminger_10 (K5),

Start 10:

- Found in 1 of 249 (0.4%) of genes in pham
- Manual Annotations of this start: 1 of 231
- Called 100.0% of time when present
- Phage (with cluster) where this start called: Krueger_11 (K6),

Start 14:

- Found in 26 of 249 (10.4%) of genes in pham
- Manual Annotations of this start: 6 of 231
- Called 23.1% of time when present
- Phage (with cluster) where this start called: AlleyCat_10 (K5), Kratio_9 (K5), Larva_10 (K5), MacnCheese_12 (K3), Pixie_11 (K3), ShedlockHolmes_11 (K3),

Start 16:

- Found in 41 of 249 (16.5%) of genes in pham
- Manual Annotations of this start: 22 of 231
- Called 56.1% of time when present
- Phage (with cluster) where this start called: Amgine_10 (K6), Amohnition_11 (K6), Bryler_11 (K6), Cain_11 (K6), DarthP_11 (K6), Ekdilam_9 (K6), Ellie_9 (K6), Fefferhead_11 (K6), Feyre_10 (K5), Hammy_11 (K6), OkiRoe_10 (K5), Paola_10 (K5), PhelpsODU_11 (K6), Phrank_11 (K6), Shadow1_10 (K6), Sunflower1121_10 (K6), Syra333_11 (K6), TClif_11 (K6), TM4_8 (K2), Tierra_11 (K6), Unicorn_11 (K6), Ximenita_12 (K6), Yuna_12 (K6),

Start 18:

- Found in 22 of 249 (8.8%) of genes in pham
- Manual Annotations of this start: 10 of 231
- Called 54.5% of time when present
- Phage (with cluster) where this start called: Agent47_10 (K5), Curiosium_13 (K1), Dadosky_10 (K5), Edugator_9 (K5), Heftyboy_10 (K5), InvictusManeo_10 (K5), LastHope_12 (K1), Miryou_10 (K5), Psycho_10 (K5), SoSeph_10 (K5), Thyatira_10 (K5), Waterfoul_10 (K5),

Start 19:

- Found in 100 of 249 (40.2%) of genes in pham
- Manual Annotations of this start: 96 of 231
- Called 100.0% of time when present
- Phage (with cluster) where this start called: ActinUp_12 (K1), Adephagia_12 (K1), Adonis_12 (K1), Ageofdapage_12 (K1), AlishaPH_12 (K1), Amelie_8 (K1), Anaya_13 (K1), Angelica_12 (K1), Apocalypse_12 (K1), Asayake_12 (K1), Atiba_12 (K1), BEEST_12 (K1), BGlluviae_12 (K1), BaghaKamala_12 (K1), BarrelRoll_12 (K1), Beezoo_12 (K1), Bella96_12 (K1), Belladonna_12 (K1), Binglebops_8 (K1), Blizzard_12 (K1), Boiiii_12 (K1), CREW_12 (K1), Capricorn_12 (K1), CaseJules_12 (K1), CheetoDust_12 (K1), Chris_11 (K1), CrimD_12 (K1), Dalmuri_12 (K1), Deby_12 (K1), Devera_12 (K1), Dole_12 (K1), DrHayes_12 (K1), Durfee_12 (K1), Efra2_12 (K1), Emerson_12 (K1), Enkosi_8 (K1), Ganymede_12 (K1), Geraldini_12 (K1), Guanica15_12 (K1), HedwigODU_12 (K1), Homura_12 (K1), Hyperbowlee_12 (K1), Illumine_12 (K1), Inky_12 (K1), JAWS_12 (K1), Jarvi_12 (K1), Jeckyll_12 (K1), Joy99_12 (K1), KiSi_11 (K1), LaterM_12 (K1), LeMond_11 (K1), LilPharaoh_8 (K1), LindNT_12 (K1), Llorens_12 (K1), Lunahalos_12 (K1), MarkPhew_11 (K1), Marshawn_13 (K6), Mdavu_8 (K1), MeaningOfLife_12 (K1), Megsy_12 (K1), Murucutumbu_12 (K1), Mynx_12 (K1), Nibb_11 (K1), Nikao_8 (K1), Niklas_12 (K1), Nutello_8 (K1), Oscar_11 (K1), Padfoot_12 (K1), Padpat_12 (K1), Peanam_12 (K1), Peel_12 (K1), Piatt_12 (K1), Pokerus_11 (K1), Prithvi_12 (K1), QuincyRose_11 (K1), Ramen_12 (K1), Rosmarinus_12 (K1), SamuelLPlaqson_12 (K1), Scarlett_11 (K1), SgtBeansprout_8 (K1), Shaobing_12 (K1), ShiaSurprise_12 (K1), Spock_12 (K1), Stinson_12 (K1), Sulley_12 (K1), Tachez_12 (K1), TaiwanKao_12 (K1), TiniBug_12 (K1), Tiri_12 (K1), Topper_12 (K1), TreyKay_12 (K1), TruffulaTree_12 (K1), Twitch_12 (K1), Urkel_12 (K1), Validus_12 (K1), Veliki_12 (K1), YoureAdopted_11 (K1), Yunkel11_12 (K1), Zabiza_12 (K1), Zavala_12 (K1),

Start 20:

- Found in 71 of 249 (28.5%) of genes in pham
- Manual Annotations of this start: 57 of 231
- Called 93.0% of time when present
- Phage (with cluster) where this start called: Alexphander_6 (F1), Awesomesauce_6 (F1), Beakin_6 (F1), BigPhil_6 (F1), Bobi_6 (F1), Boomer_6 (F1), BuzzLyseyear_6 (F1), Cerasum_6 (F1), ChickenDinner_6 (F1), Coco12_6 (F1), Cornucopia_6 (F1), DS6A_10 (singleton), DaWorst_6 (F1), DirtMcgirt_6 (F1), DocMcStuffins_6 (F1), DosHalletts_6 (F1), Drago_6 (F1), Enby_6 (F1), Farewell_5 (AF), Flathead_6 (F1), Frankie_6 (F1), Girafales_6 (F1), Hegedechwinu_6 (F1), Hurricane_11 (K3), JalFarm20_6 (F1), Jayhawk_12 (K1), Job42_6 (F1), Juice456_6 (F1), Keshu_11 (K3), Kimberlium_6 (F1), Kingsley_6 (F1), Leozinho_6 (F1), LittleShirley_6 (F1), Lorde_6 (F1), Madiba_6 (F1), Marker_6 (F1), Misha28_6 (F1), Mova_6 (F1), Mozy_6 (F1), Oksu_6 (F1), OwlsT2W_6 (F1), Piper2020_6 (F1), Plumbus_6 (F1), Pollywog_6 (F1), Quico_6 (F1), Ramsey_6 (F1), Rando14_10 (K5), Rapunzel97_12 (K1), Rialto_6 (F1), RockyHorror_6 (F1), Sarma624_6 (F1), Seagreen_6 (F1), SimranZ1_6 (F1), Slimphazie_12 (K1), Sparky_5 (AF), Spikelee_6 (F1), Squirty_6 (F3), Stap_6 (F1), Starcevich_6 (F1), TBond007_11 (K3), TootsiePop_6 (F1), Tootsieroll_6 (F1), Totinger_6 (F1), TribbleTrouble_10 (K3), UncleRicky_6 (F1), Velveteen_6 (F1),

Start 21:

- Found in 30 of 249 (12.0%) of genes in pham
- Manual Annotations of this start: 29 of 231
- Called 100.0% of time when present

- Phage (with cluster) where this start called: Aminay_10 (K7), Boilgate_9 (K8), BoostSeason_8 (K2), Chancellor_13 (K4), Cheetobro_13 (K4), DismalFunk_8 (K2), DismalStressor_8 (K2), Eponine_13 (K4), Findley_8 (K2), Fionnbharth_13 (K4), JF1_13 (K4), Juliette_13 (K4), Malthus_13 (K4), Marcoliusprime_8 (K2), Milly_8 (K2), MissDaisy_13 (K4), Mitti_13 (K4), Mufasa_8 (K2), OmniCritical_13 (K4), Patt_13 (K4), Reptar3000_13 (K4), Ruthiejr_12 (K4), SamScheppers_11 (K4), Slarp_13 (K4), Strobilo_9 (K2), Taquito_11 (K4), Wintermute_13 (K4), Y10_13 (K4), Y2_13 (K4), ZoeJ_8 (K2),

Start 23:

- Found in 2 of 249 (0.8%) of genes in pham
- No Manual Annotations of this start.
- Called 50.0% of time when present
- Phage (with cluster) where this start called: Pharb_11 (K3),

Start 24:

- Found in 1 of 249 (0.4%) of genes in pham
- Manual Annotations of this start: 1 of 231
- Called 100.0% of time when present
- Phage (with cluster) where this start called: SirPhilip_11 (K6),

Start 25:

- Found in 4 of 249 (1.6%) of genes in pham
- Manual Annotations of this start: 4 of 231
- Called 100.0% of time when present
- Phage (with cluster) where this start called: Fryberger_38 (DP), Ronaldo_41 (DP), Volt_40 (DP), Ziko_41 (DP),

Summary by clusters:

There are 13 clusters represented in this pham: F1, singleton, F3, AF, K3, K2, K1, K7, K6, K5, K4, K8, DP,

Info for manual annotations of cluster AF:

- Start number 20 was manually annotated 1 time for cluster AF.

Info for manual annotations of cluster DP:

- Start number 25 was manually annotated 4 times for cluster DP.

Info for manual annotations of cluster F1:

- Start number 20 was manually annotated 47 times for cluster F1.

Info for manual annotations of cluster F3:

- Start number 20 was manually annotated 1 time for cluster F3.

Info for manual annotations of cluster K1:

- Start number 18 was manually annotated 2 times for cluster K1.
- Start number 19 was manually annotated 95 times for cluster K1.
- Start number 20 was manually annotated 2 times for cluster K1.

Info for manual annotations of cluster K2:

- Start number 16 was manually annotated 1 time for cluster K2.
- Start number 21 was manually annotated 8 times for cluster K2.

Info for manual annotations of cluster K3:

- Start number 14 was manually annotated 3 times for cluster K3.
- Start number 20 was manually annotated 4 times for cluster K3.

Info for manual annotations of cluster K4:

- Start number 21 was manually annotated 19 times for cluster K4.

Info for manual annotations of cluster K5:

- Start number 6 was manually annotated 4 times for cluster K5.
- Start number 7 was manually annotated 1 time for cluster K5.
- Start number 14 was manually annotated 3 times for cluster K5.
- Start number 16 was manually annotated 3 times for cluster K5.
- Start number 18 was manually annotated 8 times for cluster K5.
- Start number 20 was manually annotated 1 time for cluster K5.

Info for manual annotations of cluster K6:

- Start number 10 was manually annotated 1 time for cluster K6.
- Start number 16 was manually annotated 18 times for cluster K6.
- Start number 19 was manually annotated 1 time for cluster K6.
- Start number 24 was manually annotated 1 time for cluster K6.

Info for manual annotations of cluster K7:

- Start number 21 was manually annotated 1 time for cluster K7.

Info for manual annotations of cluster K8:

- Start number 21 was manually annotated 1 time for cluster K8.

Gene Information:

Gene: ActinUp_12 Start: 7313, Stop: 7855, Start Num: 19

Candidate Starts for ActinUp_12:

(Start: 19 @7313 has 96 MA's), (32, 7448), (43, 7616), (54, 7811), (56, 7829), (57, 7838),

Gene: Adephagia_12 Start: 7313, Stop: 7855, Start Num: 19

Candidate Starts for Adephagia_12:

(Start: 19 @7313 has 96 MA's), (32, 7448), (43, 7616), (54, 7811), (56, 7829), (57, 7838),

Gene: Adonis_12 Start: 7324, Stop: 7866, Start Num: 19

Candidate Starts for Adonis_12:

(Start: 19 @7324 has 96 MA's), (32, 7459), (43, 7627), (54, 7822), (56, 7840), (57, 7849),

Gene: Agent47_10 Start: 7496, Stop: 8026, Start Num: 18

Candidate Starts for Agent47_10:

(Start: 14 @7460 has 6 MA's), (Start: 16 @7481 has 22 MA's), (Start: 18 @7496 has 10 MA's), (22, 7508), (43, 7793),

Gene: Ageofdapage_12 Start: 7253, Stop: 7795, Start Num: 19

Candidate Starts for Ageofdapage_12:

(Start: 19 @7253 has 96 MA's), (32, 7388), (43, 7556), (56, 7769), (57, 7778),

Gene: Alexphander_6 Start: 4408, Stop: 4944, Start Num: 20

Candidate Starts for Alexphander_6:

(Start: 20 @4408 has 57 MA's), (34, 4630), (39, 4699), (41, 4708), (50, 4810), (57, 4927),

Gene: AlishaPH_12 Start: 7315, Stop: 7857, Start Num: 19

Candidate Starts for AlishaPH_12:

(Start: 19 @7315 has 96 MA's), (32, 7450), (33, 7483), (43, 7618), (54, 7813), (56, 7831), (57, 7840),

Gene: AlleyCat_10 Start: 7355, Stop: 7921, Start Num: 14

Candidate Starts for AlleyCat_10:

(Start: 14 @7355 has 6 MA's), (Start: 16 @7376 has 22 MA's), (Start: 18 @7391 has 10 MA's), (22, 7403), (43, 7688),

Gene: Amelie_8 Start: 6589, Stop: 7137, Start Num: 19

Candidate Starts for Amelie_8:

(Start: 19 @6589 has 96 MA's), (43, 6904), (54, 7093), (56, 7111),

Gene: Amgine_10 Start: 6944, Stop: 7507, Start Num: 16

Candidate Starts for Amgine_10:

(Start: 16 @6944 has 22 MA's), (43, 7274), (56, 7481), (57, 7490),

Gene: Aminay_10 Start: 7229, Stop: 7786, Start Num: 21

Candidate Starts for Aminay_10:

(Start: 21 @7229 has 29 MA's), (57, 7769),

Gene: Amohnition_11 Start: 7198, Stop: 7755, Start Num: 16

Candidate Starts for Amohnition_11:

(13, 7180), (Start: 16 @7198 has 22 MA's), (43, 7522), (54, 7711), (56, 7729), (57, 7738),

Gene: Anaya_13 Start: 7316, Stop: 7855, Start Num: 19

Candidate Starts for Anaya_13:

(Start: 19 @7316 has 96 MA's), (32, 7451), (38, 7583), (43, 7619), (54, 7811), (56, 7829), (57, 7838),

Gene: Angelica_12 Start: 7293, Stop: 7826, Start Num: 19

Candidate Starts for Angelica_12:

(Start: 19 @7293 has 96 MA's), (32, 7422), (56, 7800), (57, 7809),

Gene: Apocalypse_12 Start: 7291, Stop: 7833, Start Num: 19

Candidate Starts for Apocalypse_12:

(Start: 19 @7291 has 96 MA's), (32, 7426), (43, 7594), (54, 7789), (56, 7807), (57, 7816),

Gene: Asayake_12 Start: 7357, Stop: 7899, Start Num: 19

Candidate Starts for Asayake_12:

(Start: 19 @7357 has 96 MA's), (32, 7492), (43, 7660), (54, 7855), (56, 7873), (57, 7882),

Gene: Atiba_12 Start: 7279, Stop: 7821, Start Num: 19

Candidate Starts for Atiba_12:

(Start: 19 @7279 has 96 MA's), (32, 7414), (43, 7582), (54, 7777), (56, 7795), (57, 7804),

Gene: Awesomesauce_6 Start: 4411, Stop: 4947, Start Num: 20

Candidate Starts for Awesomesauce_6:

(Start: 20 @4411 has 57 MA's), (34, 4633), (39, 4702), (41, 4711), (43, 4729), (50, 4813), (57, 4930),

Gene: BEEST_12 Start: 7357, Stop: 7899, Start Num: 19
Candidate Starts for BEEST_12:
(Start: 19 @7357 has 96 MA's), (32, 7492), (43, 7660), (54, 7855), (56, 7873), (57, 7882),

Gene: BGlluviae_12 Start: 7357, Stop: 7899, Start Num: 19
Candidate Starts for BGlluviae_12:
(Start: 19 @7357 has 96 MA's), (32, 7492), (43, 7660), (54, 7855), (56, 7873), (57, 7882),

Gene: BaghaKamala_12 Start: 7289, Stop: 7825, Start Num: 19
Candidate Starts for BaghaKamala_12:
(Start: 19 @7289 has 96 MA's), (32, 7418), (43, 7586), (54, 7781), (56, 7799), (57, 7808),

Gene: BarrelRoll_12 Start: 7307, Stop: 7849, Start Num: 19
Candidate Starts for BarrelRoll_12:
(Start: 19 @7307 has 96 MA's), (32, 7442), (43, 7610), (54, 7805), (56, 7823), (57, 7832),

Gene: Beakin_6 Start: 4411, Stop: 4947, Start Num: 20
Candidate Starts for Beakin_6:
(Start: 20 @4411 has 57 MA's), (34, 4633), (39, 4702), (41, 4711), (50, 4813), (57, 4930),

Gene: Beezoo_12 Start: 7339, Stop: 7875, Start Num: 19
Candidate Starts for Beezoo_12:
(Start: 19 @7339 has 96 MA's), (32, 7468), (43, 7636), (54, 7831), (56, 7849), (57, 7858),

Gene: Bella96_12 Start: 7242, Stop: 7784, Start Num: 19
Candidate Starts for Bella96_12:
(Start: 19 @7242 has 96 MA's), (32, 7377), (43, 7545), (54, 7740), (56, 7758), (57, 7767),

Gene: Belladonna_12 Start: 7357, Stop: 7899, Start Num: 19
Candidate Starts for Belladonna_12:
(Start: 19 @7357 has 96 MA's), (32, 7492), (43, 7660), (54, 7855), (56, 7873), (57, 7882),

Gene: BigPhil_6 Start: 4408, Stop: 4944, Start Num: 20
Candidate Starts for BigPhil_6:
(Start: 20 @4408 has 57 MA's), (34, 4630), (39, 4699), (41, 4708), (50, 4810), (57, 4927),

Gene: Biglebops_8 Start: 6589, Stop: 7137, Start Num: 19
Candidate Starts for Biglebops_8:
(Start: 19 @6589 has 96 MA's), (43, 6904), (54, 7093), (56, 7111),

Gene: Blizzard_12 Start: 7357, Stop: 7899, Start Num: 19
Candidate Starts for Blizzard_12:
(Start: 19 @7357 has 96 MA's), (32, 7492), (43, 7660), (54, 7855), (56, 7873), (57, 7882),

Gene: Bobi_6 Start: 4408, Stop: 4944, Start Num: 20
Candidate Starts for Bobi_6:
(Start: 20 @4408 has 57 MA's), (34, 4630), (39, 4699), (41, 4708), (50, 4810), (57, 4927),

Gene: Boiiii_12 Start: 7357, Stop: 7899, Start Num: 19
Candidate Starts for Boiiii_12:
(Start: 19 @7357 has 96 MA's), (32, 7492), (43, 7660), (54, 7855), (56, 7873), (57, 7882),

Gene: Boilgate_9 Start: 7303, Stop: 7857, Start Num: 21

Candidate Starts for Boilgate_9:

(Start: 21 @7303 has 29 MA's), (27, 7414), (33, 7501), (34, 7534), (36, 7591), (43, 7630), (44, 7636), (56, 7831),

Gene: Boomer_6 Start: 4408, Stop: 4944, Start Num: 20

Candidate Starts for Boomer_6:

(Start: 20 @4408 has 57 MA's), (34, 4630), (39, 4699), (41, 4708), (50, 4810), (57, 4927),

Gene: BoostSeason_8 Start: 5333, Stop: 5878, Start Num: 21

Candidate Starts for BoostSeason_8:

(Start: 21 @5333 has 29 MA's), (40, 5636), (43, 5654), (56, 5852),

Gene: Bryler_11 Start: 6246, Stop: 6824, Start Num: 16

Candidate Starts for Bryler_11:

(Start: 16 @6246 has 22 MA's), (43, 6591), (46, 6630), (57, 6807),

Gene: BuzzLyseyear_6 Start: 4407, Stop: 4943, Start Num: 20

Candidate Starts for BuzzLyseyear_6:

(Start: 20 @4407 has 57 MA's), (34, 4629), (39, 4698), (41, 4707), (50, 4809), (57, 4926),

Gene: CREW_12 Start: 7357, Stop: 7899, Start Num: 19

Candidate Starts for CREW_12:

(Start: 19 @7357 has 96 MA's), (32, 7492), (43, 7660), (54, 7855), (56, 7873), (57, 7882),

Gene: Cain_11 Start: 6234, Stop: 6812, Start Num: 16

Candidate Starts for Cain_11:

(Start: 16 @6234 has 22 MA's), (43, 6579), (46, 6618), (57, 6795),

Gene: Capricorn_12 Start: 7357, Stop: 7899, Start Num: 19

Candidate Starts for Capricorn_12:

(Start: 19 @7357 has 96 MA's), (32, 7492), (43, 7660), (54, 7855), (56, 7873), (57, 7882),

Gene: CaseJules_12 Start: 7357, Stop: 7899, Start Num: 19

Candidate Starts for CaseJules_12:

(Start: 19 @7357 has 96 MA's), (32, 7492), (43, 7660), (54, 7855), (56, 7873), (57, 7882),

Gene: Cerasum_6 Start: 4408, Stop: 4944, Start Num: 20

Candidate Starts for Cerasum_6:

(Start: 20 @4408 has 57 MA's), (34, 4630), (39, 4699), (41, 4708), (50, 4810), (57, 4927),

Gene: Chancellor_13 Start: 8544, Stop: 9116, Start Num: 21

Candidate Starts for Chancellor_13:

(Start: 21 @8544 has 29 MA's), (36, 8832), (43, 8877),

Gene: CheetoDust_12 Start: 7333, Stop: 7875, Start Num: 19

Candidate Starts for CheetoDust_12:

(Start: 19 @7333 has 96 MA's), (32, 7468), (43, 7636), (54, 7831), (56, 7849), (57, 7858),

Gene: Cheetobro_13 Start: 8544, Stop: 9116, Start Num: 21

Candidate Starts for Cheetobro_13:

(Start: 21 @8544 has 29 MA's), (36, 8832), (43, 8877),

Gene: ChickenDinner_6 Start: 4412, Stop: 4948, Start Num: 20

Candidate Starts for ChickenDinner_6:

(Start: 20 @4412 has 57 MA's), (34, 4634), (39, 4703), (41, 4712), (43, 4730), (50, 4814), (57, 4931),

Gene: Chris_11 Start: 6182, Stop: 6724, Start Num: 19

Candidate Starts for Chris_11:

(Start: 19 @6182 has 96 MA's), (54, 6680), (56, 6698), (57, 6707),

Gene: Coco12_6 Start: 4408, Stop: 4944, Start Num: 20

Candidate Starts for Coco12_6:

(Start: 20 @4408 has 57 MA's), (34, 4630), (39, 4699), (41, 4708), (43, 4726), (50, 4810), (57, 4927),

Gene: Collard_10 Start: 7358, Stop: 7987, Start Num: 6

Candidate Starts for Collard_10:

(Start: 6 @7358 has 4 MA's), (Start: 7 @7397 has 1 MA's), (Start: 14 @7442 has 6 MA's), (Start: 16 @7463 has 22 MA's), (Start: 18 @7478 has 10 MA's), (22, 7490), (43, 7763),

Gene: Cornucopia_6 Start: 4408, Stop: 4944, Start Num: 20

Candidate Starts for Cornucopia_6:

(Start: 20 @4408 has 57 MA's), (39, 4699), (41, 4708), (57, 4927),

Gene: CrimD_12 Start: 7285, Stop: 7827, Start Num: 19

Candidate Starts for CrimD_12:

(Start: 19 @7285 has 96 MA's), (32, 7420), (40, 7564), (43, 7588), (54, 7783), (56, 7801), (57, 7810),

Gene: Curiosium_13 Start: 6689, Stop: 7222, Start Num: 18

Candidate Starts for Curiosium_13:

(Start: 18 @6689 has 10 MA's), (32, 6824), (43, 6992), (56, 7196), (57, 7205),

Gene: DS6A_10 Start: 7559, Stop: 8122, Start Num: 20

Candidate Starts for DS6A_10:

(Start: 20 @7559 has 57 MA's), (37, 7835), (42, 7868), (57, 8105),

Gene: DaWorst_6 Start: 4409, Stop: 4945, Start Num: 20

Candidate Starts for DaWorst_6:

(Start: 20 @4409 has 57 MA's), (34, 4631), (39, 4700), (41, 4709), (43, 4727), (50, 4811), (57, 4928),

Gene: Dadosky_10 Start: 7391, Stop: 7921, Start Num: 18

Candidate Starts for Dadosky_10:

(Start: 14 @7355 has 6 MA's), (Start: 16 @7376 has 22 MA's), (Start: 18 @7391 has 10 MA's), (22, 7403), (43, 7688),

Gene: Dalmuri_12 Start: 7357, Stop: 7899, Start Num: 19

Candidate Starts for Dalmuri_12:

(Start: 19 @7357 has 96 MA's), (32, 7492), (43, 7660), (54, 7855), (56, 7873), (57, 7882),

Gene: DarthP_11 Start: 7198, Stop: 7755, Start Num: 16

Candidate Starts for DarthP_11:

(13, 7180), (Start: 16 @7198 has 22 MA's), (43, 7522), (54, 7711), (56, 7729), (57, 7738),

Gene: Deby_12 Start: 7293, Stop: 7826, Start Num: 19

Candidate Starts for Deby_12:

(Start: 19 @7293 has 96 MA's), (32, 7422), (56, 7800), (57, 7809),

Gene: Devera_12 Start: 7321, Stop: 7854, Start Num: 19
Candidate Starts for Devera_12:
(Start: 19 @7321 has 96 MA's), (32, 7447), (43, 7615), (56, 7828), (57, 7837),

Gene: DirtMcgirt_6 Start: 4410, Stop: 4946, Start Num: 20
Candidate Starts for DirtMcgirt_6:
(Start: 20 @4410 has 57 MA's), (34, 4632), (39, 4701), (41, 4710), (50, 4812), (57, 4929),

Gene: DismalFunk_8 Start: 5349, Stop: 5891, Start Num: 21
Candidate Starts for DismalFunk_8:
(Start: 21 @5349 has 29 MA's), (40, 5652), (43, 5670), (56, 5865),

Gene: DismalStressor_8 Start: 5349, Stop: 5891, Start Num: 21
Candidate Starts for DismalStressor_8:
(Start: 21 @5349 has 29 MA's), (40, 5652), (43, 5670), (56, 5865),

Gene: DocMcStuffins_6 Start: 4412, Stop: 4948, Start Num: 20
Candidate Starts for DocMcStuffins_6:
(Start: 20 @4412 has 57 MA's), (34, 4634), (39, 4703), (41, 4712), (43, 4730), (50, 4814), (57, 4931),

Gene: Dole_12 Start: 7321, Stop: 7854, Start Num: 19
Candidate Starts for Dole_12:
(Start: 19 @7321 has 96 MA's), (32, 7447), (43, 7615), (56, 7828), (57, 7837),

Gene: DosHalletts_6 Start: 4408, Stop: 4944, Start Num: 20
Candidate Starts for DosHalletts_6:
(Start: 20 @4408 has 57 MA's), (34, 4630), (39, 4699), (41, 4708), (50, 4810), (57, 4927),

Gene: DrHayes_12 Start: 7263, Stop: 7805, Start Num: 19
Candidate Starts for DrHayes_12:
(Start: 19 @7263 has 96 MA's), (32, 7398), (43, 7566), (54, 7761), (56, 7779), (57, 7788),

Gene: Drago_6 Start: 4408, Stop: 4944, Start Num: 20
Candidate Starts for Drago_6:
(Start: 20 @4408 has 57 MA's), (34, 4630), (39, 4699), (41, 4708), (50, 4810), (57, 4927),

Gene: Durfee_12 Start: 7357, Stop: 7899, Start Num: 19
Candidate Starts for Durfee_12:
(Start: 19 @7357 has 96 MA's), (32, 7492), (43, 7660), (54, 7855), (56, 7873), (57, 7882),

Gene: Edugator_9 Start: 7391, Stop: 7921, Start Num: 18
Candidate Starts for Edugator_9:
(Start: 14 @7355 has 6 MA's), (Start: 16 @7376 has 22 MA's), (Start: 18 @7391 has 10 MA's), (22, 7403), (43, 7688),

Gene: Efra2_12 Start: 6263, Stop: 6796, Start Num: 19
Candidate Starts for Efra2_12:
(17, 6257), (Start: 19 @6263 has 96 MA's), (32, 6392), (43, 6560), (56, 6770), (57, 6779),

Gene: Ekdilam_9 Start: 6928, Stop: 7482, Start Num: 16
Candidate Starts for Ekdilam_9:
(Start: 16 @6928 has 22 MA's), (43, 7249), (54, 7438), (56, 7456), (57, 7465),

Gene: Ellie_9 Start: 7015, Stop: 7581, Start Num: 16
Candidate Starts for Ellie_9:
(Start: 16 @7015 has 22 MA's), (43, 7348), (56, 7555), (57, 7564),

Gene: Emerson_12 Start: 7316, Stop: 7858, Start Num: 19
Candidate Starts for Emerson_12:
(Start: 19 @7316 has 96 MA's), (32, 7451), (43, 7619), (54, 7814), (56, 7832), (57, 7841),

Gene: Enby_6 Start: 4408, Stop: 4944, Start Num: 20
Candidate Starts for Enby_6:
(Start: 20 @4408 has 57 MA's), (34, 4630), (39, 4699), (41, 4708), (50, 4810), (57, 4927),

Gene: Enkosi_8 Start: 6589, Stop: 7137, Start Num: 19
Candidate Starts for Enkosi_8:
(Start: 19 @6589 has 96 MA's), (43, 6904), (54, 7093), (56, 7111),

Gene: Eponine_13 Start: 8420, Stop: 8992, Start Num: 21
Candidate Starts for Eponine_13:
(3, 8240), (Start: 21 @8420 has 29 MA's), (36, 8708), (43, 8753),

Gene: Farewell_5 Start: 4759, Stop: 5304, Start Num: 20
Candidate Starts for Farewell_5:
(Start: 20 @4759 has 57 MA's), (29, 4870), (30, 4879), (48, 5128), (51, 5164), (52, 5236),

Gene: Fefferhead_11 Start: 7185, Stop: 7748, Start Num: 16
Candidate Starts for Fefferhead_11:
(Start: 16 @7185 has 22 MA's), (43, 7515), (56, 7722), (57, 7731),

Gene: Feyre_10 Start: 7278, Stop: 7802, Start Num: 16
Candidate Starts for Feyre_10:
(Start: 6 @7173 has 4 MA's), (Start: 7 @7212 has 1 MA's), (Start: 14 @7257 has 6 MA's), (Start: 16 @7278 has 22 MA's), (Start: 18 @7293 has 10 MA's), (22, 7305), (43, 7578),

Gene: Findley_8 Start: 5349, Stop: 5891, Start Num: 21
Candidate Starts for Findley_8:
(Start: 21 @5349 has 29 MA's), (40, 5652), (43, 5670), (56, 5865),

Gene: Fionnbharth_13 Start: 8534, Stop: 9106, Start Num: 21
Candidate Starts for Fionnbharth_13:
(Start: 21 @8534 has 29 MA's), (36, 8822), (43, 8867),

Gene: Flathead_6 Start: 4408, Stop: 4944, Start Num: 20
Candidate Starts for Flathead_6:
(Start: 20 @4408 has 57 MA's), (34, 4630), (39, 4699), (41, 4708), (50, 4810), (57, 4927),

Gene: Frankie_6 Start: 4602, Stop: 5138, Start Num: 20
Candidate Starts for Frankie_6:
(Start: 20 @4602 has 57 MA's), (34, 4824), (39, 4893), (41, 4902), (50, 5004), (57, 5121),

Gene: Fryberger_38 Start: 13725, Stop: 14291, Start Num: 25
Candidate Starts for Fryberger_38:
(12, 13608), (Start: 25 @13725 has 4 MA's), (31, 13833), (45, 14055), (49, 14115), (53, 14226),

Gene: Ganymede_12 Start: 7333, Stop: 7875, Start Num: 19

Candidate Starts for Ganymede_12:

(Start: 19 @7333 has 96 MA's), (32, 7468), (43, 7636), (54, 7831), (56, 7849), (57, 7858),

Gene: Gengar_10 Start: 7279, Stop: 7908, Start Num: 6

Candidate Starts for Gengar_10:

(Start: 6 @7279 has 4 MA's), (Start: 7 @7318 has 1 MA's), (Start: 14 @7363 has 6 MA's), (Start: 16 @7384 has 22 MA's), (Start: 18 @7399 has 10 MA's), (22, 7411), (43, 7684),

Gene: Geraldini_12 Start: 7339, Stop: 7875, Start Num: 19

Candidate Starts for Geraldini_12:

(Start: 19 @7339 has 96 MA's), (32, 7468), (43, 7636), (54, 7831), (56, 7849), (57, 7858),

Gene: Girafales_6 Start: 4403, Stop: 4939, Start Num: 20

Candidate Starts for Girafales_6:

(Start: 20 @4403 has 57 MA's), (39, 4694), (41, 4703), (57, 4922),

Gene: Guanica15_12 Start: 6279, Stop: 6812, Start Num: 19

Candidate Starts for Guanica15_12:

(17, 6273), (Start: 19 @6279 has 96 MA's), (32, 6408), (43, 6576), (56, 6786), (57, 6795),

Gene: Guillsminger_10 Start: 7293, Stop: 7883, Start Num: 7

Candidate Starts for Guillsminger_10:

(Start: 6 @7254 has 4 MA's), (Start: 7 @7293 has 1 MA's), (Start: 14 @7338 has 6 MA's), (Start: 16 @7359 has 22 MA's), (Start: 18 @7374 has 10 MA's), (22, 7386), (43, 7659),

Gene: Hammy_11 Start: 7195, Stop: 7752, Start Num: 16

Candidate Starts for Hammy_11:

(13, 7177), (Start: 16 @7195 has 22 MA's), (43, 7519), (54, 7708), (57, 7735),

Gene: HedwigODU_12 Start: 7313, Stop: 7855, Start Num: 19

Candidate Starts for HedwigODU_12:

(Start: 19 @7313 has 96 MA's), (32, 7448), (43, 7616), (54, 7811), (56, 7829), (57, 7838),

Gene: Heftyboy_10 Start: 7501, Stop: 8010, Start Num: 18

Candidate Starts for Heftyboy_10:

(Start: 6 @7381 has 4 MA's), (Start: 7 @7420 has 1 MA's), (Start: 14 @7465 has 6 MA's), (Start: 16 @7486 has 22 MA's), (Start: 18 @7501 has 10 MA's), (22, 7513), (43, 7786),

Gene: Hegedechwinu_6 Start: 4408, Stop: 4944, Start Num: 20

Candidate Starts for Hegedechwinu_6:

(Start: 20 @4408 has 57 MA's), (34, 4630), (41, 4708), (50, 4810), (57, 4927),

Gene: Homura_12 Start: 7357, Stop: 7899, Start Num: 19

Candidate Starts for Homura_12:

(Start: 19 @7357 has 96 MA's), (32, 7492), (43, 7660), (54, 7855), (56, 7873), (57, 7882),

Gene: Hurricane_11 Start: 7335, Stop: 7883, Start Num: 20

Candidate Starts for Hurricane_11:

(2, 7140), (Start: 14 @7299 has 6 MA's), (Start: 20 @7335 has 57 MA's), (30, 7461), (34, 7545), (43, 7647), (57, 7866),

Gene: Hyperbowlee_12 Start: 7357, Stop: 7899, Start Num: 19

Candidate Starts for Hyperbowlee_12:

(Start: 19 @7357 has 96 MA's), (32, 7492), (43, 7660), (54, 7855), (56, 7873), (57, 7882),

Gene: Illumine_12 Start: 7321, Stop: 7854, Start Num: 19

Candidate Starts for Illumine_12:

(Start: 19 @7321 has 96 MA's), (32, 7447), (43, 7615), (56, 7828), (57, 7837),

Gene: Inky_12 Start: 7357, Stop: 7899, Start Num: 19

Candidate Starts for Inky_12:

(Start: 19 @7357 has 96 MA's), (32, 7492), (43, 7660), (54, 7855), (56, 7873), (57, 7882),

Gene: InvictusManeo_10 Start: 7500, Stop: 8030, Start Num: 18

Candidate Starts for InvictusManeo_10:

(5, 7356), (Start: 6 @7377 has 4 MA's), (Start: 14 @7464 has 6 MA's), (Start: 16 @7485 has 22 MA's),
(Start: 18 @7500 has 10 MA's), (22, 7512), (43, 7797),

Gene: JAWS_12 Start: 7310, Stop: 7852, Start Num: 19

Candidate Starts for JAWS_12:

(Start: 19 @7310 has 96 MA's), (32, 7445), (43, 7613), (54, 7808), (56, 7826), (57, 7835),

Gene: JF1_13 Start: 8533, Stop: 9105, Start Num: 21

Candidate Starts for JF1_13:

(Start: 21 @8533 has 29 MA's), (36, 8821), (43, 8866),

Gene: JalFarm20_6 Start: 4408, Stop: 4944, Start Num: 20

Candidate Starts for JalFarm20_6:

(Start: 20 @4408 has 57 MA's), (34, 4630), (39, 4699), (41, 4708), (50, 4810), (57, 4927),

Gene: Jarvi_12 Start: 7357, Stop: 7899, Start Num: 19

Candidate Starts for Jarvi_12:

(Start: 19 @7357 has 96 MA's), (32, 7492), (43, 7660), (54, 7855), (56, 7873), (57, 7882),

Gene: Jayhawk_12 Start: 7314, Stop: 7856, Start Num: 20

Candidate Starts for Jayhawk_12:

(4, 7131), (Start: 20 @7314 has 57 MA's), (32, 7449), (43, 7617), (54, 7812), (56, 7830), (57, 7839),

Gene: Jeckyll_12 Start: 7357, Stop: 7899, Start Num: 19

Candidate Starts for Jeckyll_12:

(Start: 19 @7357 has 96 MA's), (32, 7492), (43, 7660), (54, 7855), (56, 7873), (57, 7882),

Gene: Job42_6 Start: 4408, Stop: 4944, Start Num: 20

Candidate Starts for Job42_6:

(Start: 20 @4408 has 57 MA's), (34, 4630), (39, 4699), (41, 4708), (43, 4726), (47, 4786), (50, 4810),
(57, 4927),

Gene: Joy99_12 Start: 7289, Stop: 7825, Start Num: 19

Candidate Starts for Joy99_12:

(Start: 19 @7289 has 96 MA's), (32, 7418), (43, 7586), (54, 7781), (56, 7799), (57, 7808),

Gene: Juice456_6 Start: 4409, Stop: 4945, Start Num: 20

Candidate Starts for Juice456_6:

(Start: 20 @4409 has 57 MA's), (34, 4631), (39, 4700), (41, 4709), (50, 4811), (57, 4928),

Gene: Juliette_13 Start: 8420, Stop: 8992, Start Num: 21

Candidate Starts for Juliette_13:

(3, 8240), (Start: 21 @8420 has 29 MA's), (36, 8708), (43, 8753),

Gene: Keshu_11 Start: 7324, Stop: 7872, Start Num: 20

Candidate Starts for Keshu_11:

(Start: 20 @7324 has 57 MA's), (26, 7417), (43, 7636), (57, 7855),

Gene: KiSi_11 Start: 6171, Stop: 6728, Start Num: 19

Candidate Starts for KiSi_11:

(Start: 19 @6171 has 96 MA's), (54, 6684), (56, 6702), (57, 6711),

Gene: Kimberlium_6 Start: 4409, Stop: 4945, Start Num: 20

Candidate Starts for Kimberlium_6:

(Start: 20 @4409 has 57 MA's), (34, 4631), (39, 4700), (41, 4709), (50, 4811), (57, 4928),

Gene: Kingsley_6 Start: 4408, Stop: 4944, Start Num: 20

Candidate Starts for Kingsley_6:

(Start: 20 @4408 has 57 MA's), (34, 4630), (39, 4699), (41, 4708), (50, 4810), (57, 4927),

Gene: Kratio_9 Start: 7091, Stop: 7657, Start Num: 14

Candidate Starts for Kratio_9:

(Start: 14 @7091 has 6 MA's), (Start: 16 @7112 has 22 MA's), (Start: 18 @7127 has 10 MA's), (22, 7139), (43, 7424),

Gene: Krueger_11 Start: 6185, Stop: 6796, Start Num: 10

Candidate Starts for Krueger_11:

(Start: 10 @6185 has 1 MA's), (Start: 16 @6224 has 22 MA's), (35, 6512), (43, 6563), (46, 6602), (56, 6770), (57, 6779),

Gene: Larva_10 Start: 7222, Stop: 7788, Start Num: 14

Candidate Starts for Larva_10:

(Start: 14 @7222 has 6 MA's), (Start: 16 @7243 has 22 MA's), (Start: 18 @7258 has 10 MA's), (22, 7270), (43, 7555),

Gene: LastHope_12 Start: 6334, Stop: 6882, Start Num: 18

Candidate Starts for LastHope_12:

(Start: 18 @6334 has 10 MA's), (32, 6484), (43, 6652), (46, 6691), (54, 6838), (56, 6856), (57, 6865),

Gene: LaterM_12 Start: 7280, Stop: 7822, Start Num: 19

Candidate Starts for LaterM_12:

(Start: 19 @7280 has 96 MA's), (32, 7415), (43, 7583), (56, 7796), (57, 7805),

Gene: LeMond_11 Start: 6171, Stop: 6728, Start Num: 19

Candidate Starts for LeMond_11:

(Start: 19 @6171 has 96 MA's), (54, 6684), (56, 6702), (57, 6711),

Gene: Leozinho_6 Start: 4408, Stop: 4944, Start Num: 20

Candidate Starts for Leozinho_6:

(Start: 20 @4408 has 57 MA's), (34, 4630), (39, 4699), (41, 4708), (50, 4810), (57, 4927),

Gene: Leston_10 Start: 7384, Stop: 8013, Start Num: 6

Candidate Starts for Leston_10:

(Start: 6 @7384 has 4 MA's), (Start: 7 @7423 has 1 MA's), (Start: 14 @7468 has 6 MA's), (Start: 16 @7489 has 22 MA's), (Start: 18 @7504 has 10 MA's), (22, 7516), (43, 7789),

Gene: LilPharaoh_8 Start: 6589, Stop: 7137, Start Num: 19

Candidate Starts for LilPharaoh_8:

(Start: 19 @6589 has 96 MA's), (43, 6904), (54, 7093), (56, 7111),

Gene: LindNT_12 Start: 7280, Stop: 7822, Start Num: 19

Candidate Starts for LindNT_12:

(Start: 19 @7280 has 96 MA's), (32, 7415), (43, 7583), (54, 7778), (56, 7796), (57, 7805),

Gene: LittleShirley_6 Start: 4409, Stop: 4945, Start Num: 20

Candidate Starts for LittleShirley_6:

(Start: 20 @4409 has 57 MA's), (34, 4631), (39, 4700), (41, 4709), (50, 4811), (57, 4928),

Gene: Llorens_12 Start: 7357, Stop: 7899, Start Num: 19

Candidate Starts for Llorens_12:

(Start: 19 @7357 has 96 MA's), (32, 7492), (43, 7660), (54, 7855), (56, 7873), (57, 7882),

Gene: Lorde_6 Start: 4408, Stop: 4944, Start Num: 20

Candidate Starts for Lorde_6:

(Start: 20 @4408 has 57 MA's), (34, 4630), (39, 4699), (41, 4708), (50, 4810), (57, 4927),

Gene: Lunahalos_12 Start: 7357, Stop: 7899, Start Num: 19

Candidate Starts for Lunahalos_12:

(Start: 19 @7357 has 96 MA's), (32, 7492), (43, 7660), (54, 7855), (56, 7873), (57, 7882),

Gene: MacnCheese_12 Start: 7513, Stop: 8091, Start Num: 14

Candidate Starts for MacnCheese_12:

(Start: 14 @7513 has 6 MA's), (Start: 20 @7549 has 57 MA's), (26, 7633), (43, 7852), (57, 8074),

Gene: Madiba_6 Start: 4407, Stop: 4943, Start Num: 20

Candidate Starts for Madiba_6:

(Start: 20 @4407 has 57 MA's), (34, 4629), (39, 4698), (41, 4707), (43, 4725), (47, 4785), (50, 4809), (57, 4926),

Gene: Malthus_13 Start: 8453, Stop: 9025, Start Num: 21

Candidate Starts for Malthus_13:

(Start: 21 @8453 has 29 MA's), (36, 8741), (43, 8786),

Gene: Marcoliusprime_8 Start: 5349, Stop: 5891, Start Num: 21

Candidate Starts for Marcoliusprime_8:

(Start: 21 @5349 has 29 MA's), (40, 5652), (43, 5670), (56, 5865),

Gene: MarkPhew_11 Start: 6090, Stop: 6629, Start Num: 19

Candidate Starts for MarkPhew_11:

(Start: 19 @6090 has 96 MA's), (35, 6342), (38, 6357), (54, 6585), (56, 6603), (57, 6612),

Gene: Marker_6 Start: 4407, Stop: 4943, Start Num: 20

Candidate Starts for Marker_6:

(Start: 20 @4407 has 57 MA's), (34, 4629), (39, 4698), (41, 4707), (43, 4725), (47, 4785), (50, 4809), (57, 4926),

Gene: Marshawn_13 Start: 6726, Stop: 7280, Start Num: 19
Candidate Starts for Marshawn_13:
(Start: 19 @6726 has 96 MA's), (32, 6876), (38, 7008), (54, 7236), (56, 7254),

Gene: Mdavu_8 Start: 6577, Stop: 7125, Start Num: 19
Candidate Starts for Mdavu_8:
(Start: 19 @6577 has 96 MA's), (43, 6892), (54, 7081), (56, 7099),

Gene: MeaningOfLife_12 Start: 7286, Stop: 7828, Start Num: 19
Candidate Starts for MeaningOfLife_12:
(Start: 19 @7286 has 96 MA's), (32, 7421), (43, 7589), (54, 7784), (56, 7802), (57, 7811),

Gene: Megsy_12 Start: 7283, Stop: 7825, Start Num: 19
Candidate Starts for Megsy_12:
(Start: 19 @7283 has 96 MA's), (32, 7418), (43, 7586), (54, 7781), (56, 7799), (57, 7808),

Gene: Milly_8 Start: 5349, Stop: 5891, Start Num: 21
Candidate Starts for Milly_8:
(Start: 21 @5349 has 29 MA's), (40, 5652), (43, 5670), (56, 5865),

Gene: Miryou_10 Start: 7374, Stop: 7883, Start Num: 18
Candidate Starts for Miryou_10:
(Start: 6 @7254 has 4 MA's), (Start: 7 @7293 has 1 MA's), (Start: 14 @7338 has 6 MA's), (Start: 16 @7359 has 22 MA's), (Start: 18 @7374 has 10 MA's), (22, 7386), (43, 7659),

Gene: Misha28_6 Start: 4412, Stop: 4948, Start Num: 20
Candidate Starts for Misha28_6:
(Start: 20 @4412 has 57 MA's), (34, 4634), (39, 4703), (41, 4712), (43, 4730), (50, 4814), (57, 4931),

Gene: MissDaisy_13 Start: 8319, Stop: 8891, Start Num: 21
Candidate Starts for MissDaisy_13:
(Start: 21 @8319 has 29 MA's), (36, 8607), (43, 8652),

Gene: Mitti_13 Start: 8457, Stop: 9029, Start Num: 21
Candidate Starts for Mitti_13:
(Start: 21 @8457 has 29 MA's), (36, 8745), (43, 8790),

Gene: Mova_6 Start: 4410, Stop: 4946, Start Num: 20
Candidate Starts for Mova_6:
(Start: 20 @4410 has 57 MA's), (34, 4632), (39, 4701), (41, 4710), (43, 4728), (50, 4812), (57, 4929),

Gene: Mozy_6 Start: 4405, Stop: 4941, Start Num: 20
Candidate Starts for Mozy_6:
(Start: 20 @4405 has 57 MA's), (39, 4696), (41, 4705), (57, 4924),

Gene: Mufasa_8 Start: 5333, Stop: 5878, Start Num: 21
Candidate Starts for Mufasa_8:
(Start: 21 @5333 has 29 MA's), (40, 5636), (43, 5654), (56, 5852),

Gene: Murucutumbu_12 Start: 7273, Stop: 7815, Start Num: 19
Candidate Starts for Murucutumbu_12:
(Start: 19 @7273 has 96 MA's), (32, 7408), (43, 7576), (56, 7789), (57, 7798),

Gene: Mynx_12 Start: 7336, Stop: 7878, Start Num: 19
Candidate Starts for Mynx_12:
(Start: 19 @7336 has 96 MA's), (32, 7471), (43, 7639), (54, 7834), (56, 7852), (57, 7861),

Gene: Nibb_11 Start: 6227, Stop: 6772, Start Num: 19
Candidate Starts for Nibb_11:
(Start: 19 @6227 has 96 MA's), (46, 6572), (54, 6728), (56, 6746), (57, 6755),

Gene: Nikao_8 Start: 6589, Stop: 7137, Start Num: 19
Candidate Starts for Nikao_8:
(Start: 19 @6589 has 96 MA's), (43, 6904), (54, 7093), (56, 7111),

Gene: Niklas_12 Start: 6376, Stop: 6936, Start Num: 19
Candidate Starts for Niklas_12:
(17, 6370), (Start: 19 @6376 has 96 MA's), (32, 6532), (43, 6700), (56, 6910),

Gene: Nutello_8 Start: 6589, Stop: 7137, Start Num: 19
Candidate Starts for Nutello_8:
(Start: 19 @6589 has 96 MA's), (43, 6904), (54, 7093), (56, 7111),

Gene: OkiRoe_10 Start: 7360, Stop: 7884, Start Num: 16
Candidate Starts for OkiRoe_10:
(Start: 6 @7255 has 4 MA's), (Start: 7 @7294 has 1 MA's), (Start: 14 @7339 has 6 MA's), (Start: 16 @7360 has 22 MA's), (Start: 18 @7375 has 10 MA's), (22, 7387), (43, 7660),

Gene: Oksu_6 Start: 4409, Stop: 4945, Start Num: 20
Candidate Starts for Oksu_6:
(Start: 20 @4409 has 57 MA's), (34, 4631), (39, 4700), (41, 4709), (50, 4811), (57, 4928),

Gene: OmniCritical_13 Start: 8444, Stop: 9016, Start Num: 21
Candidate Starts for OmniCritical_13:
(Start: 21 @8444 has 29 MA's), (36, 8732), (43, 8777),

Gene: Omnicron_10 Start: 6242, Stop: 6898, Start Num: 6
Candidate Starts for Omnicron_10:
(Start: 6 @6242 has 4 MA's), (Start: 7 @6281 has 1 MA's), (15, 6329), (Start: 20 @6365 has 57 MA's), (22, 6377), (43, 6665), (56, 6872),

Gene: Oscar_11 Start: 6172, Stop: 6729, Start Num: 19
Candidate Starts for Oscar_11:
(Start: 19 @6172 has 96 MA's), (54, 6685), (56, 6703), (57, 6712),

Gene: OwlsT2W_6 Start: 4408, Stop: 4944, Start Num: 20
Candidate Starts for OwlsT2W_6:
(Start: 20 @4408 has 57 MA's), (34, 4630), (39, 4699), (41, 4708), (50, 4810), (57, 4927),

Gene: Padfoot_12 Start: 7357, Stop: 7899, Start Num: 19
Candidate Starts for Padfoot_12:
(Start: 19 @7357 has 96 MA's), (32, 7492), (43, 7660), (54, 7855), (56, 7873), (57, 7882),

Gene: Padpat_12 Start: 7316, Stop: 7858, Start Num: 19
Candidate Starts for Padpat_12:
(Start: 19 @7316 has 96 MA's), (32, 7451), (43, 7619), (54, 7814), (56, 7832), (57, 7841),

Gene: Paola_10 Start: 7359, Stop: 7883, Start Num: 16

Candidate Starts for Paola_10:

(Start: 6 @7254 has 4 MA's), (Start: 7 @7293 has 1 MA's), (Start: 14 @7338 has 6 MA's), (Start: 16 @7359 has 22 MA's), (Start: 18 @7374 has 10 MA's), (22, 7386), (43, 7659),

Gene: Patt_13 Start: 8295, Stop: 8867, Start Num: 21

Candidate Starts for Patt_13:

(Start: 21 @8295 has 29 MA's), (36, 8583), (43, 8628),

Gene: Peanam_12 Start: 6376, Stop: 6936, Start Num: 19

Candidate Starts for Peanam_12:

(17, 6370), (Start: 19 @6376 has 96 MA's), (32, 6532), (43, 6700), (56, 6910),

Gene: Peel_12 Start: 7357, Stop: 7899, Start Num: 19

Candidate Starts for Peel_12:

(Start: 19 @7357 has 96 MA's), (32, 7492), (43, 7660), (54, 7855), (56, 7873), (57, 7882),

Gene: Pharb_11 Start: 7184, Stop: 7717, Start Num: 23

Candidate Starts for Pharb_11:

(8, 7088), (9, 7094), (Start: 20 @7169 has 57 MA's), (23, 7184), (43, 7481), (57, 7700),

Gene: PhelpsODU_11 Start: 6278, Stop: 6850, Start Num: 16

Candidate Starts for PhelpsODU_11:

(1, 6080), (11, 6236), (Start: 16 @6278 has 22 MA's), (43, 6617), (46, 6656), (54, 6806), (56, 6824),

Gene: Phrank_11 Start: 6234, Stop: 6800, Start Num: 16

Candidate Starts for Phrank_11:

(Start: 16 @6234 has 22 MA's), (43, 6567), (46, 6606), (57, 6783),

Gene: Piatt_12 Start: 7357, Stop: 7899, Start Num: 19

Candidate Starts for Piatt_12:

(Start: 19 @7357 has 96 MA's), (32, 7492), (43, 7660), (54, 7855), (56, 7873), (57, 7882),

Gene: Piper2020_6 Start: 4411, Stop: 4947, Start Num: 20

Candidate Starts for Piper2020_6:

(Start: 20 @4411 has 57 MA's), (34, 4633), (39, 4702), (41, 4711), (43, 4729), (50, 4813), (57, 4930),

Gene: Pixie_11 Start: 7042, Stop: 7626, Start Num: 14

Candidate Starts for Pixie_11:

(Start: 14 @7042 has 6 MA's), (Start: 20 @7078 has 57 MA's), (38, 7354), (43, 7390), (57, 7609),

Gene: Plumbus_6 Start: 4409, Stop: 4945, Start Num: 20

Candidate Starts for Plumbus_6:

(Start: 20 @4409 has 57 MA's), (34, 4631), (39, 4700), (41, 4709), (50, 4811), (57, 4928),

Gene: Pokerus_11 Start: 7270, Stop: 7812, Start Num: 19

Candidate Starts for Pokerus_11:

(Start: 19 @7270 has 96 MA's), (32, 7405), (43, 7573), (54, 7768), (56, 7786), (57, 7795),

Gene: Pollywog_6 Start: 4408, Stop: 4944, Start Num: 20

Candidate Starts for Pollywog_6:

(Start: 20 @4408 has 57 MA's), (34, 4630), (39, 4699), (41, 4708), (43, 4726), (50, 4810), (57, 4927),

Gene: Prithvi_12 Start: 7280, Stop: 7822, Start Num: 19

Candidate Starts for Prithvi_12:

(Start: 19 @7280 has 96 MA's), (32, 7415), (43, 7583), (54, 7778), (56, 7796), (57, 7805),

Gene: Psycho_10 Start: 7388, Stop: 7918, Start Num: 18

Candidate Starts for Psycho_10:

(Start: 14 @7352 has 6 MA's), (Start: 16 @7373 has 22 MA's), (Start: 18 @7388 has 10 MA's), (22, 7400), (43, 7685),

Gene: Quico_6 Start: 4403, Stop: 4939, Start Num: 20

Candidate Starts for Quico_6:

(Start: 20 @4403 has 57 MA's), (39, 4694), (41, 4703), (57, 4922),

Gene: QuincyRose_11 Start: 7333, Stop: 7875, Start Num: 19

Candidate Starts for QuincyRose_11:

(Start: 19 @7333 has 96 MA's), (32, 7468), (43, 7636), (54, 7831), (56, 7849), (57, 7858),

Gene: Ramen_12 Start: 7313, Stop: 7855, Start Num: 19

Candidate Starts for Ramen_12:

(Start: 19 @7313 has 96 MA's), (32, 7448), (43, 7616), (54, 7811), (56, 7829), (57, 7838),

Gene: Ramsey_6 Start: 4408, Stop: 4944, Start Num: 20

Candidate Starts for Ramsey_6:

(Start: 20 @4408 has 57 MA's), (39, 4699), (41, 4708), (50, 4810), (57, 4927),

Gene: Rando14_10 Start: 6393, Stop: 6926, Start Num: 20

Candidate Starts for Rando14_10:

(15, 6357), (Start: 20 @6393 has 57 MA's), (22, 6405), (43, 6693), (47, 6753), (56, 6900),

Gene: Rapunzel97_12 Start: 7314, Stop: 7856, Start Num: 20

Candidate Starts for Rapunzel97_12:

(4, 7131), (Start: 20 @7314 has 57 MA's), (32, 7449), (43, 7617), (54, 7812), (56, 7830), (57, 7839),

Gene: Reptar3000_13 Start: 8297, Stop: 8869, Start Num: 21

Candidate Starts for Reptar3000_13:

(Start: 21 @8297 has 29 MA's), (36, 8585), (43, 8630),

Gene: Rialto_6 Start: 4409, Stop: 4945, Start Num: 20

Candidate Starts for Rialto_6:

(Start: 20 @4409 has 57 MA's), (34, 4631), (39, 4700), (41, 4709), (43, 4727), (50, 4811), (57, 4928),

Gene: RockyHorror_6 Start: 4408, Stop: 4944, Start Num: 20

Candidate Starts for RockyHorror_6:

(Start: 20 @4408 has 57 MA's), (34, 4630), (39, 4699), (41, 4708), (50, 4810), (57, 4927),

Gene: Ronaldo_41 Start: 14655, Stop: 15221, Start Num: 25

Candidate Starts for Ronaldo_41:

(12, 14538), (Start: 25 @14655 has 4 MA's), (31, 14763), (45, 14985), (49, 15045), (53, 15156),

Gene: Rosmarinus_12 Start: 7345, Stop: 7887, Start Num: 19

Candidate Starts for Rosmarinus_12:

(Start: 19 @7345 has 96 MA's), (32, 7480), (43, 7648), (54, 7843), (56, 7861), (57, 7870),

Gene: Ruthiejr_12 Start: 8151, Stop: 8723, Start Num: 21

Candidate Starts for Ruthiejr_12:

(3, 7971), (Start: 21 @8151 has 29 MA's), (36, 8439), (43, 8484),

Gene: SamScheppers_11 Start: 8060, Stop: 8632, Start Num: 21

Candidate Starts for SamScheppers_11:

(Start: 21 @8060 has 29 MA's), (36, 8348), (43, 8393),

Gene: SamuelLPlaqson_12 Start: 7263, Stop: 7805, Start Num: 19

Candidate Starts for SamuelLPlaqson_12:

(Start: 19 @7263 has 96 MA's), (32, 7398), (43, 7566), (54, 7761), (56, 7779), (57, 7788),

Gene: Sarma624_6 Start: 4408, Stop: 4944, Start Num: 20

Candidate Starts for Sarma624_6:

(Start: 20 @4408 has 57 MA's), (34, 4630), (39, 4699), (41, 4708), (50, 4810), (57, 4927),

Gene: Scarlett_11 Start: 6171, Stop: 6728, Start Num: 19

Candidate Starts for Scarlett_11:

(Start: 19 @6171 has 96 MA's), (54, 6684), (56, 6702), (57, 6711),

Gene: Seagreen_6 Start: 4409, Stop: 4945, Start Num: 20

Candidate Starts for Seagreen_6:

(Start: 20 @4409 has 57 MA's), (34, 4631), (39, 4700), (41, 4709), (50, 4811), (57, 4928),

Gene: SgtBeansprout_8 Start: 6589, Stop: 7137, Start Num: 19

Candidate Starts for SgtBeansprout_8:

(Start: 19 @6589 has 96 MA's), (43, 6904), (54, 7093), (56, 7111),

Gene: Shadow1_10 Start: 6145, Stop: 6711, Start Num: 16

Candidate Starts for Shadow1_10:

(Start: 16 @6145 has 22 MA's), (46, 6517), (57, 6694),

Gene: Shaobing_12 Start: 6376, Stop: 6936, Start Num: 19

Candidate Starts for Shaobing_12:

(17, 6370), (Start: 19 @6376 has 96 MA's), (32, 6532), (43, 6700), (56, 6910),

Gene: ShedlockHolmes_11 Start: 7290, Stop: 7874, Start Num: 14

Candidate Starts for ShedlockHolmes_11:

(Start: 14 @7290 has 6 MA's), (Start: 20 @7326 has 57 MA's), (38, 7602), (43, 7638), (57, 7857),

Gene: ShiaSurprise_12 Start: 7357, Stop: 7899, Start Num: 19

Candidate Starts for ShiaSurprise_12:

(Start: 19 @7357 has 96 MA's), (32, 7492), (43, 7660), (54, 7855), (56, 7873), (57, 7882),

Gene: SimranZ1_6 Start: 4408, Stop: 4944, Start Num: 20

Candidate Starts for SimranZ1_6:

(Start: 20 @4408 has 57 MA's), (34, 4630), (39, 4699), (41, 4708), (50, 4810), (57, 4927),

Gene: SirPhilip_11 Start: 6046, Stop: 6564, Start Num: 24

Candidate Starts for SirPhilip_11:

(Start: 24 @6046 has 1 MA's), (32, 6163), (55, 6529), (56, 6538), (57, 6547),

Gene: Slarp_13 Start: 8544, Stop: 9116, Start Num: 21

Candidate Starts for Slarp_13:

(Start: 21 @8544 has 29 MA's), (36, 8832), (43, 8877),

Gene: Slimphazie_12 Start: 7314, Stop: 7856, Start Num: 20

Candidate Starts for Slimphazie_12:

(4, 7131), (Start: 20 @7314 has 57 MA's), (32, 7449), (43, 7617), (54, 7812), (56, 7830), (57, 7839),

Gene: SoSeph_10 Start: 7501, Stop: 8010, Start Num: 18

Candidate Starts for SoSeph_10:

(Start: 6 @7381 has 4 MA's), (Start: 7 @7420 has 1 MA's), (Start: 14 @7465 has 6 MA's), (Start: 16 @7486 has 22 MA's), (Start: 18 @7501 has 10 MA's), (22, 7513), (43, 7786),

Gene: Sparky_5 Start: 4760, Stop: 5305, Start Num: 20

Candidate Starts for Sparky_5:

(Start: 20 @4760 has 57 MA's), (29, 4871), (30, 4880), (48, 5129), (51, 5165), (52, 5237),

Gene: Spikelee_6 Start: 4409, Stop: 4945, Start Num: 20

Candidate Starts for Spikelee_6:

(Start: 20 @4409 has 57 MA's), (34, 4631), (39, 4700), (41, 4709), (43, 4727), (50, 4811), (57, 4928),

Gene: Spock_12 Start: 7357, Stop: 7899, Start Num: 19

Candidate Starts for Spock_12:

(Start: 19 @7357 has 96 MA's), (32, 7492), (43, 7660), (54, 7855), (56, 7873), (57, 7882),

Gene: Squirty_6 Start: 4407, Stop: 4943, Start Num: 20

Candidate Starts for Squirty_6:

(Start: 20 @4407 has 57 MA's), (34, 4629), (39, 4698), (41, 4707), (50, 4809), (57, 4926),

Gene: Stap_6 Start: 4408, Stop: 4944, Start Num: 20

Candidate Starts for Stap_6:

(Start: 20 @4408 has 57 MA's), (34, 4630), (39, 4699), (41, 4708), (50, 4810), (57, 4927),

Gene: Starcevich_6 Start: 4409, Stop: 4945, Start Num: 20

Candidate Starts for Starcevich_6:

(Start: 20 @4409 has 57 MA's), (34, 4631), (39, 4700), (41, 4709), (43, 4727), (50, 4811), (57, 4928),

Gene: Stinson_12 Start: 7285, Stop: 7827, Start Num: 19

Candidate Starts for Stinson_12:

(Start: 19 @7285 has 96 MA's), (32, 7420), (43, 7588), (56, 7801), (57, 7810),

Gene: Strobilo_9 Start: 5349, Stop: 5891, Start Num: 21

Candidate Starts for Strobilo_9:

(Start: 21 @5349 has 29 MA's), (40, 5652), (43, 5670), (56, 5865),

Gene: Sulley_12 Start: 7292, Stop: 7825, Start Num: 19

Candidate Starts for Sulley_12:

(Start: 19 @7292 has 96 MA's), (32, 7421), (56, 7799), (57, 7808),

Gene: Sunflower1121_10 Start: 6147, Stop: 6722, Start Num: 16

Candidate Starts for Sunflower1121_10:

(Start: 16 @6147 has 22 MA's), (43, 6489), (46, 6528), (57, 6705),

Gene: Syra333_11 Start: 6243, Stop: 6815, Start Num: 16

Candidate Starts for Syra333_11:

(Start: 16 @6243 has 22 MA's), (35, 6531), (43, 6582), (46, 6621), (56, 6789), (57, 6798),

Gene: TBond007_11 Start: 7077, Stop: 7625, Start Num: 20

Candidate Starts for TBond007_11:

(Start: 14 @7041 has 6 MA's), (Start: 20 @7077 has 57 MA's), (38, 7353), (43, 7389), (57, 7608),

Gene: TClif_11 Start: 6257, Stop: 6814, Start Num: 16

Candidate Starts for TClif_11:

(Start: 16 @6257 has 22 MA's), (23, 6290), (43, 6581), (57, 6797),

Gene: TM4_8 Start: 5384, Stop: 5944, Start Num: 16

Candidate Starts for TM4_8:

(Start: 16 @5384 has 22 MA's), (28, 5516), (40, 5702), (43, 5720), (56, 5918),

Gene: Tachez_12 Start: 7279, Stop: 7821, Start Num: 19

Candidate Starts for Tachez_12:

(Start: 19 @7279 has 96 MA's), (32, 7414), (43, 7582), (54, 7777), (56, 7795), (57, 7804),

Gene: TaiwanKao_12 Start: 7286, Stop: 7828, Start Num: 19

Candidate Starts for TaiwanKao_12:

(Start: 19 @7286 has 96 MA's), (32, 7421), (43, 7589), (54, 7784), (56, 7802), (57, 7811),

Gene: Taquito_11 Start: 8133, Stop: 8702, Start Num: 21

Candidate Starts for Taquito_11:

(Start: 21 @8133 has 29 MA's), (36, 8418), (43, 8463),

Gene: Thyatira_10 Start: 7374, Stop: 7883, Start Num: 18

Candidate Starts for Thyatira_10:

(Start: 6 @7254 has 4 MA's), (Start: 7 @7293 has 1 MA's), (Start: 14 @7338 has 6 MA's), (Start: 16 @7359 has 22 MA's), (Start: 18 @7374 has 10 MA's), (22, 7386), (43, 7659),

Gene: Tierra_11 Start: 6942, Stop: 7514, Start Num: 16

Candidate Starts for Tierra_11:

(1, 6744), (11, 6900), (Start: 16 @6942 has 22 MA's), (43, 7281), (46, 7320), (54, 7470), (56, 7488),

Gene: TiniBug_12 Start: 7263, Stop: 7805, Start Num: 19

Candidate Starts for TiniBug_12:

(Start: 19 @7263 has 96 MA's), (32, 7398), (43, 7566), (54, 7761), (56, 7779), (57, 7788),

Gene: Tiri_12 Start: 7324, Stop: 7866, Start Num: 19

Candidate Starts for Tiri_12:

(Start: 19 @7324 has 96 MA's), (32, 7459), (43, 7627), (54, 7822), (56, 7840), (57, 7849),

Gene: TootsiePop_6 Start: 4412, Stop: 4948, Start Num: 20

Candidate Starts for TootsiePop_6:

(Start: 20 @4412 has 57 MA's), (34, 4634), (39, 4703), (41, 4712), (43, 4730), (50, 4814), (57, 4931),

Gene: Tootsieroll_6 Start: 4408, Stop: 4944, Start Num: 20

Candidate Starts for Tootsieroll_6:

(Start: 20 @4408 has 57 MA's), (34, 4630), (39, 4699), (41, 4708), (50, 4810), (57, 4927),

Gene: Topper_12 Start: 7357, Stop: 7899, Start Num: 19

Candidate Starts for Topper_12:

(Start: 19 @7357 has 96 MA's), (32, 7492), (43, 7660), (54, 7855), (56, 7873), (57, 7882),

Gene: Totinger_6 Start: 4409, Stop: 4945, Start Num: 20

Candidate Starts for Totinger_6:

(Start: 20 @4409 has 57 MA's), (34, 4631), (39, 4700), (41, 4709), (43, 4727), (50, 4811), (57, 4928),

Gene: TreyKay_12 Start: 7280, Stop: 7822, Start Num: 19

Candidate Starts for TreyKay_12:

(Start: 19 @7280 has 96 MA's), (32, 7415), (43, 7583), (54, 7778), (56, 7796), (57, 7805),

Gene: TribelTrouble_10 Start: 7121, Stop: 7663, Start Num: 20

Candidate Starts for TribelTrouble_10:

(2, 6923), (Start: 14 @7085 has 6 MA's), (Start: 20 @7121 has 57 MA's), (30, 7238),

Gene: TruffulaTree_12 Start: 7310, Stop: 7852, Start Num: 19

Candidate Starts for TruffulaTree_12:

(Start: 19 @7310 has 96 MA's), (32, 7445), (43, 7613), (54, 7808), (56, 7826), (57, 7835),

Gene: Twitch_12 Start: 7357, Stop: 7899, Start Num: 19

Candidate Starts for Twitch_12:

(Start: 19 @7357 has 96 MA's), (32, 7492), (43, 7660), (54, 7855), (56, 7873), (57, 7882),

Gene: UncleRicky_6 Start: 4408, Stop: 4944, Start Num: 20

Candidate Starts for UncleRicky_6:

(Start: 20 @4408 has 57 MA's), (34, 4630), (39, 4699), (41, 4708), (50, 4810), (57, 4927),

Gene: Unicorn_11 Start: 6278, Stop: 6850, Start Num: 16

Candidate Starts for Unicorn_11:

(1, 6080), (11, 6236), (Start: 16 @6278 has 22 MA's), (43, 6617), (46, 6656), (54, 6806), (56, 6824),

Gene: Urkel_12 Start: 7263, Stop: 7805, Start Num: 19

Candidate Starts for Urkel_12:

(Start: 19 @7263 has 96 MA's), (32, 7398), (43, 7566), (54, 7761), (56, 7779), (57, 7788),

Gene: Validus_12 Start: 6293, Stop: 6850, Start Num: 19

Candidate Starts for Validus_12:

(Start: 19 @6293 has 96 MA's), (32, 6446), (43, 6614), (56, 6824),

Gene: Veliki_12 Start: 7357, Stop: 7899, Start Num: 19

Candidate Starts for Veliki_12:

(Start: 19 @7357 has 96 MA's), (32, 7492), (43, 7660), (54, 7855), (56, 7873), (57, 7882),

Gene: Velveteen_6 Start: 4408, Stop: 4944, Start Num: 20

Candidate Starts for Velveteen_6:

(Start: 20 @4408 has 57 MA's), (34, 4630), (39, 4699), (41, 4708), (50, 4810), (57, 4927),

Gene: Volt_40 Start: 14655, Stop: 15221, Start Num: 25

Candidate Starts for Volt_40:

(12, 14538), (Start: 25 @14655 has 4 MA's), (31, 14763), (45, 14985), (49, 15045), (53, 15156),

Gene: Waterfoul_10 Start: 7396, Stop: 7905, Start Num: 18

Candidate Starts for Waterfoul_10:

(Start: 6 @7276 has 4 MA's), (Start: 7 @7315 has 1 MA's), (Start: 14 @7360 has 6 MA's), (Start: 16 @7381 has 22 MA's), (Start: 18 @7396 has 10 MA's), (22, 7408), (43, 7681),

Gene: Wintermute_13 Start: 8533, Stop: 9105, Start Num: 21

Candidate Starts for Wintermute_13:

(Start: 21 @8533 has 29 MA's), (36, 8821), (43, 8866),

Gene: Ximenita_12 Start: 6410, Stop: 6994, Start Num: 16

Candidate Starts for Ximenita_12:

(Start: 16 @6410 has 22 MA's), (34, 6659), (35, 6710), (43, 6761), (46, 6800), (57, 6977),

Gene: Y10_13 Start: 8533, Stop: 9105, Start Num: 21

Candidate Starts for Y10_13:

(Start: 21 @8533 has 29 MA's), (36, 8821), (43, 8866),

Gene: Y2_13 Start: 8533, Stop: 9105, Start Num: 21

Candidate Starts for Y2_13:

(Start: 21 @8533 has 29 MA's), (36, 8821), (43, 8866),

Gene: YoureAdopted_11 Start: 7286, Stop: 7828, Start Num: 19

Candidate Starts for YoureAdopted_11:

(Start: 19 @7286 has 96 MA's), (32, 7421), (43, 7589), (54, 7784), (56, 7802), (57, 7811),

Gene: Yuna_12 Start: 6421, Stop: 6981, Start Num: 16

Candidate Starts for Yuna_12:

(Start: 16 @6421 has 22 MA's), (46, 6781), (56, 6955), (57, 6964),

Gene: Yunkel11_12 Start: 6279, Stop: 6812, Start Num: 19

Candidate Starts for Yunkel11_12:

(17, 6273), (Start: 19 @6279 has 96 MA's), (32, 6408), (43, 6576), (56, 6786), (57, 6795),

Gene: Zabiza_12 Start: 7313, Stop: 7855, Start Num: 19

Candidate Starts for Zabiza_12:

(Start: 19 @7313 has 96 MA's), (32, 7448), (43, 7616), (54, 7811), (56, 7829), (57, 7838),

Gene: Zavala_12 Start: 7295, Stop: 7837, Start Num: 19

Candidate Starts for Zavala_12:

(Start: 19 @7295 has 96 MA's), (32, 7430), (43, 7598), (54, 7793), (56, 7811), (57, 7820),

Gene: Ziko_41 Start: 14595, Stop: 15161, Start Num: 25

Candidate Starts for Ziko_41:

(12, 14478), (Start: 25 @14595 has 4 MA's), (31, 14703), (45, 14925), (49, 14985), (53, 15096),

Gene: ZoeJ_8 Start: 5306, Stop: 5842, Start Num: 21

Candidate Starts for ZoeJ_8:

(Start: 21 @5306 has 29 MA's), (40, 5603), (43, 5621), (56, 5816),