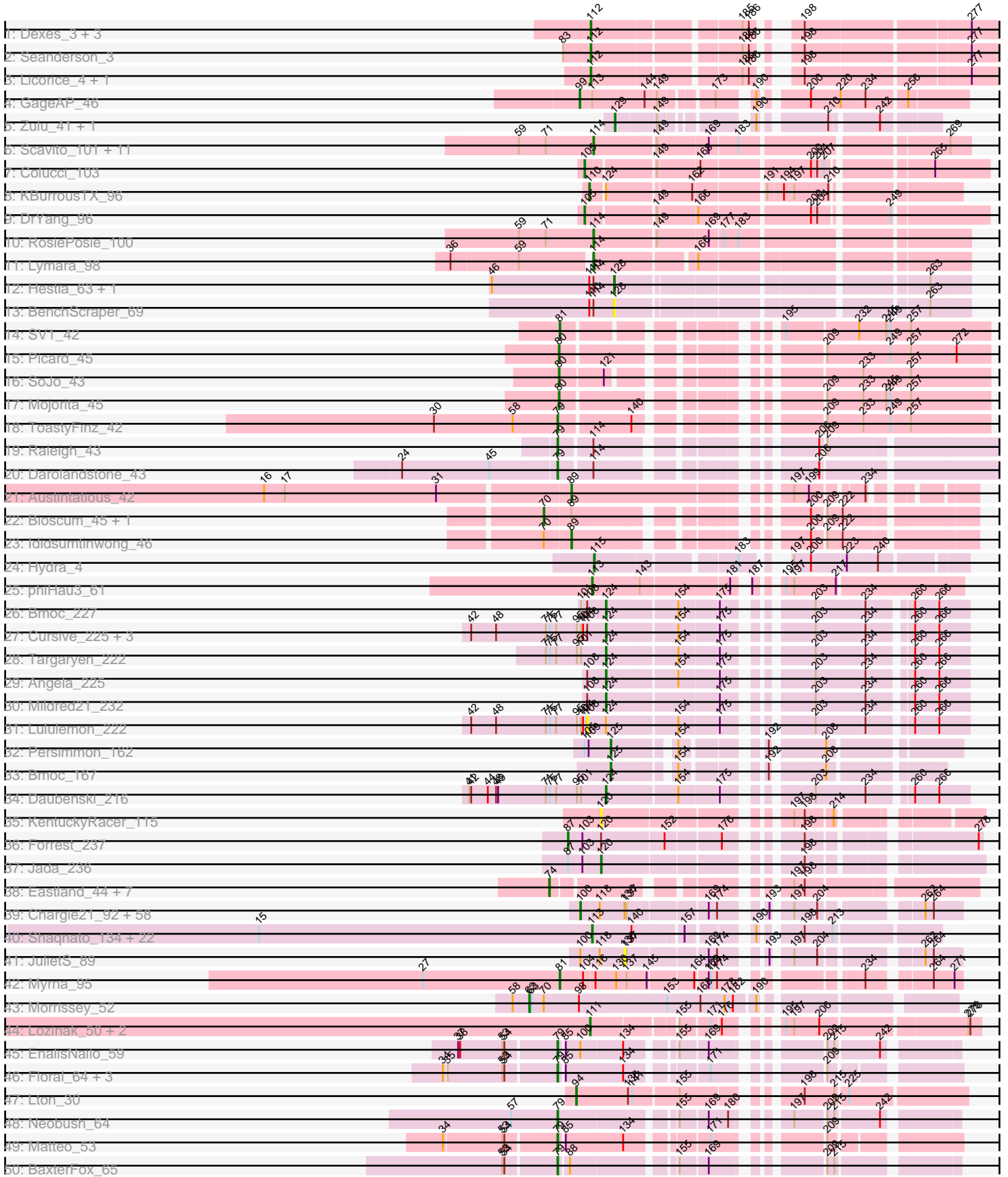


Pham 157561



Note: Tracks are now grouped by subcluster and scaled. Switching in subcluster is indicated by changes in track color. Track scale is now set by default to display the region 30 bp upstream of start 1 to 30 bp downstream of the last possible start. If this default region is judged to be packed too tightly with annotated starts, the track will be further scaled to only show that region of the ORF with annotated starts. This action will be indicated by adding "Zoomed" to the title. For starts, yellow indicates the location of called starts comprised solely of Glimmer/GeneMark auto-annotations, green indicates the location of called starts with at least 1 manual gene annotation.

Pham 157561 Report

This analysis was run 04/13/24 on database version 558.

WARNING: Pham size does not match number of genes in report. Either unphamerated genes have been added (by you) or starterator has removed genes due to invalid start codon.

Pham number 157561 has 231 members, 26 are drafts.

Phages represented in each track:

- Track 1 : Dexes_3, Smairt_2, Smeagol_2, Gyzlar_3
- Track 2 : Seanderson_3
- Track 3 : Licorice_4, BigPaolini_3
- Track 4 : GageAP_46
- Track 5 : Zulu_41, Tucker_41
- Track 6 : Scavito_101, PrincessTrina_101, Chipper1996_1010, HumptyDumpty_100, Mordred_100, JaNo_99, Linus_100, Chubster_100, Chocolat_100, Tophat_101, EdgarPoe_100, Kabreeze_100
- Track 7 : Colucci_103
- Track 8 : KBurrousTX_96
- Track 9 : DrYang_96
- Track 10 : RosiePosie_100
- Track 11 : Lymara_98
- Track 12 : Hestia_63, Faja_72
- Track 13 : BenchScraper_69
- Track 14 : SV1_42
- Track 15 : Picard_45
- Track 16 : SoJo_43
- Track 17 : Mojorita_45
- Track 18 : ToastyFinz_42
- Track 19 : Raleigh_43
- Track 20 : Darolandstone_43
- Track 21 : Austintatious_42
- Track 22 : Bioscum_45, PapayaSalad_44
- Track 23 : Ididsumtinwong_46
- Track 24 : Hydra_4
- Track 25 : phiHau3_61
- Track 26 : Bmoc_227
- Track 27 : Cursive_225, Sushi23_223, Larnav_229, PacManQ_223
- Track 28 : Targaryen_222
- Track 29 : Angela_225
- Track 30 : Mildred21_232
- Track 31 : Lululemon_222

- Track 32 : Persimmon_162
- Track 33 : Bmoc_167
- Track 34 : Daubenski_216
- Track 35 : KentuckyRacer_115
- Track 36 : Forrest_237
- Track 37 : Jada_236
- Track 38 : Eastland_44, Ignacio_44, HFrancette_45, Eklok_44, AxeJC_43, Piccadilly_44, Vondra_43, Cumberbatch_45
- Track 39 : Charge21_92, Atlantean_95, StubbySaigey_98, JPickles_94, CindyLou_97, SilverDipper_97, Ngannou_92, Naija_95, Sebata_97, Iota_90, Shnickers_96, ValleyTerrace_96, LifeSavor_95, Essence_93, Audrick_98, Sauce_96, Babyland_96, Rahel_95, Amataga_96, Guwapp_95, InigoMontoya_97, ArcherS7_95, LRRHood_90, Derek_96, Jemmno_96, Cali_91, Nappy_98, Jedediah_99, Fludd_96, EmmaElysia_95, Basquiat_92, Yassified_92, Bangla1971_97, Adlitam_96, Kboogie_99, JustHall_92, Pivoine_95, Grungle_83, Momo_95, Jaygup_96, Phusco_96, Ghost_95, Shaqnato_88, Trinitium_92, Gamgam_96, Koguma_92, Sprinklers_91, Phlegm_98, SmallFry_96, McGee_97, Patter_96, DirtMonster_89, CharlieB_91, YoungMoneyMata_96, Ading_96, Quasimodo_96, Chomp_93, Ronan_89, Latch_96
- Track 40 : Shaqnato_134, Phox_138, Mangeria_141, Bxz1_138, LRRHood_134, Cane17_133, Lukilu_131, Jessibeth14_140, Pio_145, Fludd_142, Breeniome_140, Shelob_143, MikeLiesIn_142, Teardrop_140, LolaVinca_141, HyRo_132, ChickenPhender_137, Cali_136, CharlieB_138, Rabinovish_140, Koguma_138, Shifa_130, Burrough_141
- Track 41 : JulietS_89
- Track 42 : Myrna_95
- Track 43 : Morrissey_52
- Track 44 : Lozinak_50, Engineer_51, Smoothie_51
- Track 45 : EnalisNailo_59
- Track 46 : Floral_64, EMSquaredA_63, Pollux_66, Marteena_62
- Track 47 : Lton_30
- Track 48 : Neobush_64
- Track 49 : Matteo_53
- Track 50 : BaxterFox_65
- Track 51 : Mcklovin_2
- Track 52 : Yvonnetastic_131
- Track 53 : Belphegor_76
- Track 54 : Sitar_50, Vivi2_54, Keitabear_50, Lennon_50, Angelicage_48
- Track 55 : Ailee_47, Kewpiedoll_51, Shivanishola_50, Love_55
- Track 56 : Baddon_49
- Track 57 : MoontowerMania_50
- Track 58 : Affeca_48
- Track 59 : Kroos_19
- Track 60 : Bibwit_48, YorkOnyx_50
- Track 61 : Saronaya_49, JKSyngboy_47, Gustavo_49
- Track 62 : Sedona_50
- Track 63 : Kwobi_50
- Track 64 : Thing3_49, Kamashten_49
- Track 65 : PhorbesPhlower_38
- Track 66 : MortyNRick_64
- Track 67 : MortyNRick_68
- Track 68 : Phistory_56
- Track 69 : Apricot_54, Crater_54

- Track 70 : GMA6_79
- Track 71 : GMA6_35
- Track 72 : DalanDe_10
- Track 73 : Sour_34
- Track 74 : Cafasso_94
- Track 75 : AluminumJesus_51
- Track 76 : Fransoyer_69
- Track 77 : Blab_51
- Track 78 : SadLad_28
- Track 79 : Plumbus_66, Totinger_66
- Track 80 : EleanorGeorge_65, Firehouse51_66, Mutaforma13_69
- Track 81 : Byougenkin_63
- Track 82 : Ms6_60
- Track 83 : LittleShirley_64
- Track 84 : Guppsters_64
- Track 85 : Vibaki_76
- Track 86 : Ariel_116, Courthouse_111, Squint_114, Superphikiman_113
- Track 87 : Courthouse_162, Ariel_165
- Track 88 : MiaZeal_116
- Track 89 : Superphikiman_163
- Track 90 : Caprice_29
- Track 91 : CMP1_50
- Track 92 : Gudmit_38
- Track 93 : CN1A_74
- Track 94 : Finch_155
- Track 95 : CN1A_67
- Track 96 : Finch_154
- Track 97 : Samy_46
- Track 98 : Finch_57
- Track 99 : Footloose_54

Summary of Final Annotations (See graph section above for start numbers):

The start number called the most often in the published annotations is 100, it was called in 58 of the 205 non-draft genes in the pham.

Genes that call this "Most Annotated" start:

• Ading_96, Adlitam_96, Amataga_96, ArcherS7_95, Atlantean_95, Audrick_98, Babyland_96, Bangla1971_97, Basquiat_92, Cali_91, Chargie21_92, CharlieB_91, Chomp_93, CindyLou_97, Derek_96, DirtMonster_89, EmmaElysia_95, Essence_93, Fludd_96, GMA6_35, Gangam_96, Ghost_95, Grungle_83, Guwapp_95, InigoMontoya_97, Iota_90, JPickles_94, Jaygup_96, Jedediah_99, Jemmno_96, JustHall_92, Kboogie_99, Koguma_92, LRRHood_90, Latch_96, LifeSavor_95, McGee_97, Momo_95, Naija_95, Nappy_98, Ngannou_92, Patter_96, Phlegm_98, Phusco_96, Pivoine_95, Quasimodo_96, Rahel_95, Ronan_89, Sauce_96, Sebata_97, Shaqnato_88, Shnickers_96, SilverDipper_97, SmallFry_96, Sprinklers_91, StubbySaigey_98, Trinitium_92, ValleyTerrace_96, Yassified_92, YoungMoneyMata_96,

Genes that have the "Most Annotated" start but do not call it:

- EnalisNailo_59, JulietS_89,

Genes that do not have the "Most Annotated" start:

- Affeca_48, Ailee_47, AluminumJesus_51, Angela_225, Angelicage_48, Apricot_54, Ariel_116, Ariel_165, Austintatious_42, AxeJC_43, Baddon_49, BaxterFox_65, Belphegor_76, BenchScraper_69, Bibwit_48, BigPaolini_3, Bioscum_45, Blab_51, Bmoc_167, Bmoc_227, Breeniome_140, Burrough_141, Bxz1_138, Byougenkin_63, CMP1_50, CN1A_67, CN1A_74, Cafasso_94, Cali_136, Cane17_133, Caprice_29, CharlieB_138, ChickenPhender_137, Chipper1996_1010, Chocolat_100, Chubster_100, Colucci_103, Courthouse_111, Courthouse_162, Crater_54, Cumberbatch_45, Cursive_225, DalanDe_10, Darolandstone_43, Daubenski_216, Dexes_3, DrYang_96, EMSquaredA_63, Eastland_44, EdgarPoe_100, Eklok_44, EleanorGeorge_65, Engineer_51, Faja_72, Finch_154, Finch_155, Finch_57, Firehouse51_66, Floral_64, Fludd_142, Footloose_54, Forrest_237, Fransoyer_69, GMA6_79, GageAP_46, Gudmit_38, Guppsters_64, Gustavo_49, Gyzlar_3, HFrancette_45, Hestia_63, HumptyDumpty_100, HyRo_132, Hydra_4, Ididsumtinwong_46, Ignacio_44, JKSyngboy_47, JaNo_99, Jada_236, Jessibeth14_140, KBurrousTX_96, Kabreeze_100, Kamashten_49, Keitabear_50, KentuckyRacer_115, Kewpiedoll_51, Koguma_138, Kroos_19, Kwobi_50, LRRHood_134, Larnav_229, Lennon_50, Licorice_4, Linus_100, LittleShirley_64, LolaVince_141, Love_55, Lozinak_50, Lton_30, Lukilu_131, Lululemon_222, Lymara_98, Mangeria_141, Marteena_62, Matteo_53, Mcklovin_2, MiaZeal_116, MikeLiesIn_142, Mildred21_232, Mojourita_45, MoontowerMania_50, Mordred_100, Morrissey_52, MortyNRick_64, MortyNRick_68, Ms6_60, Mutaforma13_69, Myrna_95, Neobush_64, PacManQ_223, PapayaSalad_44, Persimmon_162, Phistory_56, PhorbesPhlower_38, Phox_138, Picard_45, Piccadilly_44, Pio_145, Plumbus_66, Pollux_66, PrincessTrina_101, Rabinovish_140, Raleigh_43, RosiePosie_100, SV1_42, SadLad_28, Samy_46, Saronaya_49, Scavito_101, Seanderson_3, Sedona_50, Shaqnato_134, Shelob_143, Shifa_130, Shivanishola_50, Sitar_50, Smairt_2, Smeagol_2, Smoothie_51, SoJo_43, Sour_34, Squint_114, Superphikiman_113, Superphikiman_163, Sushi23_223, Targaryen_222, Teardrop_140, Thing3_49, ToastyFinz_42, Tophat_101, Totinger_66, Tucker_41, Vibaki_76, Vivi2_54, Vondra_43, YorkOnyx_50, Yvonnetastic_131, Zulu_41, phiHau3_61,

Summary by start number:

Start 62:

- Found in 10 of 231 (4.3%) of genes in pham
- Manual Annotations of this start: 6 of 205
- Called 60.0% of time when present
- Phage (with cluster) where this start called: Angelicage_48 (DE1), Keitabear_50 (DE1), Lennon_50 (DE1), Morrissey_52 (CD), Sitar_50 (DE1), Vivi2_54 (DE1),

Start 65:

- Found in 8 of 231 (3.5%) of genes in pham
- Manual Annotations of this start: 2 of 205
- Called 25.0% of time when present
- Phage (with cluster) where this start called: Ariel_165 (J), Courthouse_162 (J),

Start 70:

- Found in 4 of 231 (1.7%) of genes in pham
- Manual Annotations of this start: 2 of 205

- Called 50.0% of time when present
- Phage (with cluster) where this start called: Bioscum_45 (BC3), PapayaSalad_44 (BC3),

Start 72:

- Found in 6 of 231 (2.6%) of genes in pham
- Manual Annotations of this start: 2 of 205
- Called 50.0% of time when present
- Phage (with cluster) where this start called: Byougenkin_63 (F1), Plumbus_66 (F1), Totinger_66 (F1),

Start 73:

- Found in 21 of 231 (9.1%) of genes in pham
- Manual Annotations of this start: 11 of 205
- Called 76.2% of time when present
- Phage (with cluster) where this start called: Affeca_48 (DE1), Ailee_47 (DE1), Baddon_49 (DE1), Bibwit_48 (DE1), Gustavo_49 (DE1), JKSyngboy_47 (DE1), Kamashten_49 (DE1), Kewpiedoll_51 (DE1), Kwobi_50 (DE1), Love_55 (DE1), MoontowerMania_50 (DE1), Saronaya_49 (DE1), Sedona_50 (DE1), Shivanishola_50 (DE1), Thing3_49 (DE1), YorkOnyx_50 (DE1),

Start 74:

- Found in 8 of 231 (3.5%) of genes in pham
- Manual Annotations of this start: 8 of 205
- Called 100.0% of time when present
- Phage (with cluster) where this start called: AxeJC_43 (BP), Cumberbatch_45 (BP), Eastland_44 (BP), Eklok_44 (BP), HFrancette_45 (BP), Ignacio_44 (BP), Piccadilly_44 (BP), Vondra_43 (BP),

Start 76:

- Found in 1 of 231 (0.4%) of genes in pham
- No Manual Annotations of this start.
- Called 100.0% of time when present
- Phage (with cluster) where this start called: CN1A_74 (singleton),

Start 79:

- Found in 11 of 231 (4.8%) of genes in pham
- Manual Annotations of this start: 11 of 205
- Called 100.0% of time when present
- Phage (with cluster) where this start called: BaxterFox_65 (CZ3), Darolandstone_43 (BC2), EMsquaredA_63 (CY1), EnalisNailo_59 (CY1), Floral_64 (CY1), Marteena_62 (CY1), Matteo_53 (CZ2), Neobush_64 (CZ1), Pollux_66 (CY1), Raleigh_43 (BC2), ToastyFinz_42 (BC1),

Start 80:

- Found in 3 of 231 (1.3%) of genes in pham
- Manual Annotations of this start: 3 of 205
- Called 100.0% of time when present
- Phage (with cluster) where this start called: Moajorita_45 (BC1), Picard_45 (BC1), SoJo_43 (BC1),

Start 81:

- Found in 2 of 231 (0.9%) of genes in pham

- Manual Annotations of this start: 2 of 205
- Called 100.0% of time when present
- Phage (with cluster) where this start called: Myrna_95 (C2), SV1_42 (BC1),

Start 83:

- Found in 8 of 231 (3.5%) of genes in pham
- Manual Annotations of this start: 4 of 205
- Called 62.5% of time when present
- Phage (with cluster) where this start called: EleanorGeorge_65 (F1), Firehouse51_66 (F1), MortyNRick_64 (DN), Mutaforma13_69 (F1), Superphikiman_163 (J),

Start 84:

- Found in 5 of 231 (2.2%) of genes in pham
- Manual Annotations of this start: 5 of 205
- Called 100.0% of time when present
- Phage (with cluster) where this start called: Ariel_116 (J), Courthouse_111 (J), MiaZeal_116 (J), Squint_114 (J), Superphikiman_113 (J),

Start 87:

- Found in 2 of 231 (0.9%) of genes in pham
- Manual Annotations of this start: 1 of 205
- Called 50.0% of time when present
- Phage (with cluster) where this start called: Forrest_237 (BK1),

Start 89:

- Found in 4 of 231 (1.7%) of genes in pham
- Manual Annotations of this start: 2 of 205
- Called 50.0% of time when present
- Phage (with cluster) where this start called: Austintatious_42 (BC3), Ididsumtinwong_46 (BC3),

Start 90:

- Found in 9 of 231 (3.9%) of genes in pham
- Manual Annotations of this start: 1 of 205
- Called 11.1% of time when present
- Phage (with cluster) where this start called: Cafasso_94 (DZ),

Start 91:

- Found in 1 of 231 (0.4%) of genes in pham
- Manual Annotations of this start: 1 of 205
- Called 100.0% of time when present
- Phage (with cluster) where this start called: Yvonnestic_131 (DD),

Start 93:

- Found in 1 of 231 (0.4%) of genes in pham
- Manual Annotations of this start: 1 of 205
- Called 100.0% of time when present
- Phage (with cluster) where this start called: Fransoyer_69 (EG),

Start 94:

- Found in 1 of 231 (0.4%) of genes in pham
- Manual Annotations of this start: 1 of 205

- Called 100.0% of time when present
- Phage (with cluster) where this start called: Lton_30 (CZ),

Start 96:

- Found in 1 of 231 (0.4%) of genes in pham
- Manual Annotations of this start: 1 of 205
- Called 100.0% of time when present
- Phage (with cluster) where this start called: Finch_57 (singleton),

Start 97:

- Found in 1 of 231 (0.4%) of genes in pham
- No Manual Annotations of this start.
- Called 100.0% of time when present
- Phage (with cluster) where this start called: GMA6_79 (DQ),

Start 99:

- Found in 2 of 231 (0.9%) of genes in pham
- Manual Annotations of this start: 1 of 205
- Called 50.0% of time when present
- Phage (with cluster) where this start called: GageAP_46 (A1),

Start 100:

- Found in 62 of 231 (26.8%) of genes in pham
- Manual Annotations of this start: 58 of 205
- Called 96.8% of time when present
- Phage (with cluster) where this start called: Ading_96 (C1), Adlitam_96 (C1), Amataga_96 (C1), ArcherS7_95 (C1), Atlantean_95 (C1), Audrick_98 (C1), Babyland_96 (C1), Bangla1971_97 (C1), Basquiat_92 (C1), Cali_91 (C1), Chargie21_92 (C1), CharlieB_91 (C1), Chomp_93 (C1), CindyLou_97 (C1), Derek_96 (C1), DirtMonster_89 (C1), EmmaElysia_95 (C1), Essence_93 (C1), Fludd_96 (C1), GMA6_35 (DQ), Gamgam_96 (C1), Ghost_95 (C1), Grungle_83 (C1), Guwapp_95 (C1), InigoMontoya_97 (C1), Iota_90 (C1), JPickles_94 (C1), Jaygup_96 (C1), Jedediah_99 (C1), Jemmno_96 (C1), JustHall_92 (C1), Kboogie_99 (C1), Koguma_92 (C1), LRRHood_90 (C1), Latch_96 (C1), LifeSavor_95 (C1), McGee_97 (C1), Momo_95 (C1), Naija_95 (C1), Nappy_98 (C1), Ngannou_92 (C1), Patter_96 (C1), Phlegm_98 (C1), Phusco_96 (C1), Pivoine_95 (C1), Quasimodo_96 (C1), Rahel_95 (C1), Ronan_89 (C1), Sauce_96 (C1), Sebata_97 (C1), Shaqnato_88 (C1), Shnickers_96 (C1), SilverDipper_97 (C1), SmallFry_96 (C1), Sprinklers_91 (C1), StubbySaigey_98 (C1), Trinitium_92 (C1), ValleyTerrace_96 (C1), Yassified_92 (C1), YoungMoneyMata_96 (C1),

Start 104:

- Found in 8 of 231 (3.5%) of genes in pham
- No Manual Annotations of this start.
- Called 12.5% of time when present
- Phage (with cluster) where this start called: Belphegor_76 (DE),

Start 105:

- Found in 3 of 231 (1.3%) of genes in pham
- Manual Annotations of this start: 2 of 205
- Called 66.7% of time when present
- Phage (with cluster) where this start called: Colucci_103 (AR), DrYang_96 (AR),

Start 106:

- Found in 4 of 231 (1.7%) of genes in pham
- Manual Annotations of this start: 1 of 205
- Called 50.0% of time when present
- Phage (with cluster) where this start called: Caprice_29 (S), Gudmit_38 (singleton),

Start 108:

- Found in 8 of 231 (3.5%) of genes in pham
- No Manual Annotations of this start.
- Called 12.5% of time when present
- Phage (with cluster) where this start called: Lululemon_222 (BE1),

Start 110:

- Found in 4 of 231 (1.7%) of genes in pham
- Manual Annotations of this start: 1 of 205
- Called 25.0% of time when present
- Phage (with cluster) where this start called: KBurroustX_96 (AR),

Start 111:

- Found in 4 of 231 (1.7%) of genes in pham
- Manual Annotations of this start: 4 of 205
- Called 100.0% of time when present
- Phage (with cluster) where this start called: Engineer_51 (CQ1), Finch_155 (singleton), Lozinak_50 (CQ1), Smoothie_51 (CQ1),

Start 112:

- Found in 7 of 231 (3.0%) of genes in pham
- Manual Annotations of this start: 7 of 205
- Called 100.0% of time when present
- Phage (with cluster) where this start called: BigPaolini_3 (A1), Dexes_3 (A1), Gyzlar_3 (A1), Licorice_4 (A1), Seanderson_3 (A1), Smairt_2 (A1), Smeagol_2 (A1),

Start 113:

- Found in 27 of 231 (11.7%) of genes in pham
- Manual Annotations of this start: 24 of 205
- Called 88.9% of time when present
- Phage (with cluster) where this start called: Breeniome_140 (C1), Burrough_141 (C1), Bxz1_138 (C1), Cali_136 (C1), Cane17_133 (C1), CharlieB_138 (C1), ChickenPhender_137 (C1), Fludd_142 (C1), HyRo_132 (C1), Jessibeth14_140 (C1), Koguma_138 (C1), LRRHood_134 (C1), LolaVinca_141 (C1), Lukilu_131 (C1), Mangeria_141 (C1), MikeLiesIn_142 (C1), Phox_138 (C1), Pio_145 (C1), Rabinovish_140 (C1), Shaqnato_134 (C1), Shelob_143 (C1), Shifa_130 (C1), Teardrop_140 (C1), phiHau3_61 (BD4),

Start 114:

- Found in 21 of 231 (9.1%) of genes in pham
- Manual Annotations of this start: 14 of 205
- Called 76.2% of time when present
- Phage (with cluster) where this start called: Chipper1996_1010 (AR), Chocolat_100 (AR), Chubster_100 (AR), EdgarPoe_100 (AR), Finch_154 (singleton), HumptyDumpty_100 (AR), JaNo_99 (AR), Kabreeze_100 (AR), Linus_100 (AR), Lymara_98 (AR), Mordred_100 (AR), MortyNRick_68 (DN), PrincessTrina_101 (AR), RosiePosie_100 (AR), Scavito_101 (AR), Tophat_101 (AR),

Start 115:

- Found in 8 of 231 (3.5%) of genes in pham
- Manual Annotations of this start: 8 of 205
- Called 100.0% of time when present
- Phage (with cluster) where this start called: AluminumJesus_51 (EG), Apricot_54 (DN3), Blab_51 (EG), Crater_54 (DN3), Hydra_4 (BD1), Mcklovin_2 (CZ4), Phistory_56 (DN1), PhorbesPhlower_38 (DH),

Start 116:

- Found in 3 of 231 (1.3%) of genes in pham
- Manual Annotations of this start: 2 of 205
- Called 66.7% of time when present
- Phage (with cluster) where this start called: DalanDe_10 (DQ), Footloose_54 (singleton),

Start 118:

- Found in 62 of 231 (26.8%) of genes in pham
- No Manual Annotations of this start.
- Called 1.6% of time when present
- Phage (with cluster) where this start called: CMP1_50 (singleton),

Start 120:

- Found in 4 of 231 (1.7%) of genes in pham
- Manual Annotations of this start: 2 of 205
- Called 75.0% of time when present
- Phage (with cluster) where this start called: Jada_236 (BK1), KentuckyRacer_115 (BE2), Vibaki_76 (FL),

Start 124:

- Found in 13 of 231 (5.6%) of genes in pham
- Manual Annotations of this start: 7 of 205
- Called 76.9% of time when present
- Phage (with cluster) where this start called: Angela_225 (BE1), Bmoc_227 (BE1), CN1A_67 (singleton), Cursive_225 (BE1), Daubenski_216 (BE1), Larnav_229 (BE1), Mildred21_232 (BE1), PacManQ_223 (BE1), Sushi23_223 (BE1), Targaryen_222 (BE1),

Start 125:

- Found in 2 of 231 (0.9%) of genes in pham
- Manual Annotations of this start: 2 of 205
- Called 100.0% of time when present
- Phage (with cluster) where this start called: Bmoc_167 (BE1), Persimmon_162 (BE1),

Start 126:

- Found in 7 of 231 (3.0%) of genes in pham
- No Manual Annotations of this start.
- Called 42.9% of time when present
- Phage (with cluster) where this start called: Guppsters_64 (F1), LittleShirley_64 (F1), Ms6_60 (F1),

Start 128:

- Found in 3 of 231 (1.3%) of genes in pham
- Manual Annotations of this start: 2 of 205
- Called 100.0% of time when present
- Phage (with cluster) where this start called: BenchScraper_69 (AY), Faja_72 (AY), Hestia_63 (AY),

Start 129:

- Found in 2 of 231 (0.9%) of genes in pham
- Manual Annotations of this start: 2 of 205
- Called 100.0% of time when present
- Phage (with cluster) where this start called: Tucker_41 (A6), Zulu_41 (A6),

Start 132:

- Found in 1 of 231 (0.4%) of genes in pham
- Manual Annotations of this start: 1 of 205
- Called 100.0% of time when present
- Phage (with cluster) where this start called: Kroos_19 (DE1),

Start 133:

- Found in 2 of 231 (0.9%) of genes in pham
- Manual Annotations of this start: 1 of 205
- Called 50.0% of time when present
- Phage (with cluster) where this start called: SadLad_28 (EG),

Start 136:

- Found in 60 of 231 (26.0%) of genes in pham
- No Manual Annotations of this start.
- Called 1.7% of time when present
- Phage (with cluster) where this start called: JulietS_89 (C1),

Start 146:

- Found in 1 of 231 (0.4%) of genes in pham
- Manual Annotations of this start: 1 of 205
- Called 100.0% of time when present
- Phage (with cluster) where this start called: Sour_34 (DR),

Start 150:

- Found in 2 of 231 (0.9%) of genes in pham
- Manual Annotations of this start: 1 of 205
- Called 50.0% of time when present
- Phage (with cluster) where this start called: Samy_46 (singleton),

Summary by clusters:

There are 39 clusters represented in this pham: DN, singleton, DH, CZ2, CZ3, DD, CZ1, CZ4, BD1, BP, DR, DQ, FL, A1, BD4, DN1, DN3, A6, C2, CQ1, CY1, DE, EG, J, CD, CZ, S, AR, BK1, AY, C1, F1, DE1, BE2, DZ, BE1, BC1, BC2, BC3,

Info for manual annotations of cluster A1:

- Start number 99 was manually annotated 1 time for cluster A1.
- Start number 112 was manually annotated 7 times for cluster A1.

Info for manual annotations of cluster A6:

- Start number 129 was manually annotated 2 times for cluster A6.

Info for manual annotations of cluster AR:

- Start number 105 was manually annotated 2 times for cluster AR.
- Start number 110 was manually annotated 1 time for cluster AR.
- Start number 114 was manually annotated 13 times for cluster AR.

Info for manual annotations of cluster AY:

- Start number 128 was manually annotated 2 times for cluster AY.

Info for manual annotations of cluster BC1:

- Start number 79 was manually annotated 1 time for cluster BC1.
- Start number 80 was manually annotated 3 times for cluster BC1.
- Start number 81 was manually annotated 1 time for cluster BC1.

Info for manual annotations of cluster BC2:

- Start number 79 was manually annotated 2 times for cluster BC2.

Info for manual annotations of cluster BC3:

- Start number 70 was manually annotated 2 times for cluster BC3.
- Start number 89 was manually annotated 2 times for cluster BC3.

Info for manual annotations of cluster BD1:

- Start number 115 was manually annotated 1 time for cluster BD1.

Info for manual annotations of cluster BD4:

- Start number 113 was manually annotated 1 time for cluster BD4.

Info for manual annotations of cluster BE1:

- Start number 124 was manually annotated 7 times for cluster BE1.
- Start number 125 was manually annotated 2 times for cluster BE1.

Info for manual annotations of cluster BK1:

- Start number 87 was manually annotated 1 time for cluster BK1.
- Start number 120 was manually annotated 1 time for cluster BK1.

Info for manual annotations of cluster BP:

- Start number 74 was manually annotated 8 times for cluster BP.

Info for manual annotations of cluster C1:

- Start number 100 was manually annotated 58 times for cluster C1.
- Start number 113 was manually annotated 23 times for cluster C1.

Info for manual annotations of cluster C2:

- Start number 81 was manually annotated 1 time for cluster C2.

Info for manual annotations of cluster CD:

- Start number 62 was manually annotated 1 time for cluster CD.

Info for manual annotations of cluster CQ1:

- Start number 111 was manually annotated 3 times for cluster CQ1.

Info for manual annotations of cluster CY1:

- Start number 79 was manually annotated 5 times for cluster CY1.

Info for manual annotations of cluster CZ:

- Start number 94 was manually annotated 1 time for cluster CZ.

Info for manual annotations of cluster CZ1:

- Start number 79 was manually annotated 1 time for cluster CZ1.

Info for manual annotations of cluster CZ2:

- Start number 79 was manually annotated 1 time for cluster CZ2.

Info for manual annotations of cluster CZ3:

- Start number 79 was manually annotated 1 time for cluster CZ3.

Info for manual annotations of cluster CZ4:

- Start number 115 was manually annotated 1 time for cluster CZ4.

Info for manual annotations of cluster DD:

- Start number 91 was manually annotated 1 time for cluster DD.

Info for manual annotations of cluster DE1:

- Start number 62 was manually annotated 5 times for cluster DE1.
- Start number 73 was manually annotated 11 times for cluster DE1.
- Start number 132 was manually annotated 1 time for cluster DE1.

Info for manual annotations of cluster DH:

- Start number 115 was manually annotated 1 time for cluster DH.

Info for manual annotations of cluster DN1:

- Start number 115 was manually annotated 1 time for cluster DN1.

Info for manual annotations of cluster DN3:

- Start number 115 was manually annotated 2 times for cluster DN3.

Info for manual annotations of cluster DQ:

- Start number 116 was manually annotated 1 time for cluster DQ.

Info for manual annotations of cluster DR:

- Start number 146 was manually annotated 1 time for cluster DR.

Info for manual annotations of cluster DZ:

- Start number 90 was manually annotated 1 time for cluster DZ.

Info for manual annotations of cluster EG:

- Start number 93 was manually annotated 1 time for cluster EG.
- Start number 115 was manually annotated 2 times for cluster EG.
- Start number 133 was manually annotated 1 time for cluster EG.

Info for manual annotations of cluster F1:

- Start number 72 was manually annotated 2 times for cluster F1.

- Start number 83 was manually annotated 3 times for cluster F1.

Info for manual annotations of cluster FL:

- Start number 120 was manually annotated 1 time for cluster FL.

Info for manual annotations of cluster J:

- Start number 65 was manually annotated 2 times for cluster J.
- Start number 83 was manually annotated 1 time for cluster J.
- Start number 84 was manually annotated 5 times for cluster J.

Gene Information:

Gene: Ading_96 Start: 40893, Stop: 41336, Start Num: 100

Candidate Starts for Ading_96:

(Start: 100 @40893 has 58 MA's), (118, 40917), (136, 40953), (137, 40956), (169, 41058), (174, 41070), (193, 41115), (197, 41136), (204, 41169), (262, 41283), (264, 41295),

Gene: Adlitam_96 Start: 40910, Stop: 41353, Start Num: 100

Candidate Starts for Adlitam_96:

(Start: 100 @40910 has 58 MA's), (118, 40934), (136, 40970), (137, 40973), (169, 41075), (174, 41087), (193, 41132), (197, 41153), (204, 41186), (262, 41300), (264, 41312),

Gene: Affeca_48 Start: 42397, Stop: 42915, Start Num: 73

Candidate Starts for Affeca_48:

(60, 42385), (Start: 73 @42397 has 11 MA's), (172, 42613), (200, 42703), (206, 42715),

Gene: Ailee_47 Start: 42002, Stop: 42520, Start Num: 73

Candidate Starts for Ailee_47:

(60, 41990), (Start: 62 @41999 has 6 MA's), (Start: 73 @42002 has 11 MA's), (172, 42218), (200, 42308), (206, 42320),

Gene: AluminumJesus_51 Start: 40979, Stop: 40554, Start Num: 115

Candidate Starts for AluminumJesus_51:

(Start: 115 @40979 has 8 MA's), (175, 40811), (206, 40709), (241, 40625),

Gene: Amataga_96 Start: 40155, Stop: 40598, Start Num: 100

Candidate Starts for Amataga_96:

(Start: 100 @40155 has 58 MA's), (118, 40179), (136, 40215), (137, 40218), (169, 40320), (174, 40332), (193, 40377), (197, 40398), (204, 40431), (262, 40545), (264, 40557),

Gene: Angela_225 Start: 112366, Stop: 112806, Start Num: 124

Candidate Starts for Angela_225:

(108, 112339), (Start: 124 @112366 has 7 MA's), (154, 112462), (175, 112513), (203, 112606), (234, 112678), (260, 112732), (266, 112765),

Gene: Angelicage_48 Start: 42812, Stop: 43333, Start Num: 62

Candidate Starts for Angelicage_48:

(60, 42803), (Start: 62 @42812 has 6 MA's), (Start: 73 @42815 has 11 MA's), (172, 43031), (200, 43121), (206, 43133),

Gene: Apricot_54 Start: 35119, Stop: 35568, Start Num: 115

Candidate Starts for Apricot_54:

(66, 35038), (Start: 115 @35119 has 8 MA's), (144, 35191), (177, 35287), (192, 35323), (239, 35452), (273, 35557),

Gene: ArcherS7_95 Start: 40473, Stop: 40916, Start Num: 100

Candidate Starts for ArcherS7_95:

(Start: 100 @40473 has 58 MA's), (118, 40497), (136, 40533), (137, 40536), (169, 40638), (174, 40650), (193, 40695), (197, 40716), (204, 40749), (262, 40863), (264, 40875),

Gene: Ariel_116 Start: 62922, Stop: 63554, Start Num: 84

Candidate Starts for Ariel_116:

(43, 62799), (61, 62862), (Start: 65 @62877 has 2 MA's), (Start: 84 @62922 has 5 MA's), (119, 62973), (158, 63084), (200, 63213), (223, 63243), (229, 63255), (247, 63303), (249, 63306),

Gene: Ariel_165 Start: 84168, Stop: 84737, Start Num: 65

Candidate Starts for Ariel_165:

(Start: 65 @84168 has 2 MA's), (Start: 83 @84210 has 4 MA's), (92, 84225), (188, 84447), (200, 84504), (208, 84525),

Gene: Atlantean_95 Start: 40155, Stop: 40598, Start Num: 100

Candidate Starts for Atlantean_95:

(Start: 100 @40155 has 58 MA's), (118, 40179), (136, 40215), (137, 40218), (169, 40320), (174, 40332), (193, 40377), (197, 40398), (204, 40431), (262, 40545), (264, 40557),

Gene: Audrick_98 Start: 40134, Stop: 40577, Start Num: 100

Candidate Starts for Audrick_98:

(Start: 100 @40134 has 58 MA's), (118, 40158), (136, 40194), (137, 40197), (169, 40299), (174, 40311), (193, 40356), (197, 40377), (204, 40410), (262, 40524), (264, 40536),

Gene: Austintatious_42 Start: 27716, Stop: 28177, Start Num: 89

Candidate Starts for Austintatious_42:

(16, 27290), (17, 27320), (31, 27539), (Start: 89 @27716 has 2 MA's), (197, 27980), (199, 28001), (234, 28064),

Gene: AxeJC_43 Start: 29903, Stop: 30394, Start Num: 74

Candidate Starts for AxeJC_43:

(Start: 74 @29903 has 8 MA's), (197, 30155), (198, 30170),

Gene: Babyland_96 Start: 39594, Stop: 40037, Start Num: 100

Candidate Starts for Babyland_96:

(Start: 100 @39594 has 58 MA's), (118, 39618), (136, 39654), (137, 39657), (169, 39759), (174, 39771), (193, 39816), (197, 39837), (204, 39870), (262, 39984), (264, 39996),

Gene: Baddon_49 Start: 43084, Stop: 43602, Start Num: 73

Candidate Starts for Baddon_49:

(Start: 73 @43084 has 11 MA's), (Start: 90 @43114 has 1 MA's), (172, 43300), (200, 43390), (206, 43402), (274, 43597),

Gene: Bangla1971_97 Start: 40603, Stop: 41046, Start Num: 100

Candidate Starts for Bangla1971_97:

(Start: 100 @40603 has 58 MA's), (118, 40627), (136, 40663), (137, 40666), (169, 40768), (174, 40780), (193, 40825), (197, 40846), (204, 40879), (262, 40993), (264, 41005),

Gene: Basquiat_92 Start: 39148, Stop: 39591, Start Num: 100

Candidate Starts for Basquiat_92:

(Start: 100 @39148 has 58 MA's), (118, 39172), (136, 39208), (137, 39211), (169, 39313), (174, 39325), (193, 39370), (197, 39391), (204, 39424), (262, 39538), (264, 39550),

Gene: BaxterFox_65 Start: 44276, Stop: 44731, Start Num: 79

Candidate Starts for BaxterFox_65:

(53, 44204), (54, 44207), (Start: 79 @44276 has 11 MA's), (88, 44288), (155, 44417), (169, 44453), (209, 44570), (215, 44579),

Gene: Belphegor_76 Start: 56290, Stop: 56739, Start Num: 104

Candidate Starts for Belphegor_76:

(29, 56071), (47, 56167), (50, 56176), (104, 56290), (147, 56374), (162, 56431), (171, 56455), (181, 56479), (187, 56491),

Gene: BenchScraper_69 Start: 37083, Stop: 37535, Start Num: 128

Candidate Starts for BenchScraper_69:

(Start: 110 @37047 has 1 MA's), (Start: 114 @37053 has 14 MA's), (Start: 128 @37083 has 2 MA's), (263, 37479),

Gene: Bibwit_48 Start: 41643, Stop: 42161, Start Num: 73

Candidate Starts for Bibwit_48:

(Start: 73 @41643 has 11 MA's), (Start: 90 @41673 has 1 MA's), (172, 41859), (200, 41949), (206, 41961),

Gene: BigPaolini_3 Start: 1128, Stop: 1637, Start Num: 112

Candidate Starts for BigPaolini_3:

(Start: 112 @1128 has 7 MA's), (185, 1323), (186, 1332), (198, 1368), (277, 1590),

Gene: Bioscum_45 Start: 29978, Stop: 30484, Start Num: 70

Candidate Starts for Bioscum_45:

(Start: 70 @29978 has 2 MA's), (Start: 89 @30014 has 2 MA's), (200, 30272), (209, 30290), (222, 30311),

Gene: Blab_51 Start: 40826, Stop: 40401, Start Num: 115

Candidate Starts for Blab_51:

(20, 41177), (25, 41099), (Start: 115 @40826 has 8 MA's), (175, 40658), (206, 40556), (241, 40472),

Gene: Bmoc_227 Start: 112807, Stop: 113247, Start Num: 124

Candidate Starts for Bmoc_227:

(101, 112771), (108, 112780), (Start: 124 @112807 has 7 MA's), (154, 112903), (175, 112954), (203, 113047), (234, 113119), (260, 113173), (266, 113206),

Gene: Bmoc_167 Start: 91666, Stop: 92031, Start Num: 125

Candidate Starts for Bmoc_167:

(Start: 125 @91666 has 2 MA's), (154, 91735), (192, 91822), (208, 91888),

Gene: Breeniome_140 Start: 81159, Stop: 81575, Start Num: 113

Candidate Starts for Breeniome_140:

(15, 80682), (Start: 113 @81159 has 24 MA's), (140, 81216), (157, 81279), (190, 81348), (198, 81393), (213, 81432),

Gene: Burrough_141 Start: 83310, Stop: 83726, Start Num: 113

Candidate Starts for Burrough_141:

(15, 82833), (Start: 113 @83310 has 24 MA's), (140, 83367), (157, 83430), (190, 83499), (198, 83544), (213, 83583),

Gene: Bxz1_138 Start: 84513, Stop: 84929, Start Num: 113

Candidate Starts for Bxz1_138:

(15, 84036), (Start: 113 @84513 has 24 MA's), (140, 84570), (157, 84633), (190, 84702), (198, 84747), (213, 84786),

Gene: Byougenkin_63 Start: 41134, Stop: 41616, Start Num: 72

Candidate Starts for Byougenkin_63:

(Start: 72 @41134 has 2 MA's), (126, 41218), (216, 41461), (235, 41500), (252, 41542),

Gene: CMP1_50 Start: 47245, Stop: 46814, Start Num: 118

Candidate Starts for CMP1_50:

(118, 47245), (135, 47212), (176, 47098), (196, 47044), (265, 46864),

Gene: CN1A_74 Start: 54320, Stop: 53856, Start Num: 76

Candidate Starts for CN1A_74:

(76, 54320), (104, 54290), (175, 54131),

Gene: CN1A_67 Start: 52198, Stop: 51770, Start Num: 124

Candidate Starts for CN1A_67:

(55, 52336), (117, 52210), (Start: 124 @52198 has 7 MA's), (135, 52174), (169, 52066), (197, 51991), (249, 51853), (272, 51781),

Gene: Cafasso_94 Start: 55360, Stop: 55818, Start Num: 90

Candidate Starts for Cafasso_94:

(51, 55264), (Start: 90 @55360 has 1 MA's), (130, 55423), (200, 55645), (209, 55663),

Gene: Cali_91 Start: 40987, Stop: 41430, Start Num: 100

Candidate Starts for Cali_91:

(Start: 100 @40987 has 58 MA's), (118, 41011), (136, 41047), (137, 41050), (169, 41152), (174, 41164), (193, 41209), (197, 41230), (204, 41263), (262, 41377), (264, 41389),

Gene: Cali_136 Start: 83312, Stop: 83728, Start Num: 113

Candidate Starts for Cali_136:

(15, 82835), (Start: 113 @83312 has 24 MA's), (140, 83369), (157, 83432), (190, 83501), (198, 83546), (213, 83585),

Gene: Cane17_133 Start: 84174, Stop: 84590, Start Num: 113

Candidate Starts for Cane17_133:

(15, 83697), (Start: 113 @84174 has 24 MA's), (140, 84231), (157, 84294), (190, 84363), (198, 84408), (213, 84447),

Gene: Caprice_29 Start: 9273, Stop: 9845, Start Num: 106

Candidate Starts for Caprice_29:

(Start: 106 @9273 has 1 MA's), (Start: 113 @9282 has 24 MA's), (155, 9402), (161, 9417), (184, 9474), (197, 9552), (234, 9645),

Gene: Chargie21_92 Start: 39148, Stop: 39591, Start Num: 100

Candidate Starts for Chargie21_92:

(Start: 100 @39148 has 58 MA's), (118, 39172), (136, 39208), (137, 39211), (169, 39313), (174, 39325), (193, 39370), (197, 39391), (204, 39424), (262, 39538), (264, 39550),

Gene: CharlieB_138 Start: 82195, Stop: 82611, Start Num: 113

Candidate Starts for CharlieB_138:

(15, 81718), (Start: 113 @82195 has 24 MA's), (140, 82252), (157, 82315), (190, 82384), (198, 82429), (213, 82468),

Gene: CharlieB_91 Start: 38985, Stop: 39428, Start Num: 100

Candidate Starts for CharlieB_91:

(Start: 100 @38985 has 58 MA's), (118, 39009), (136, 39045), (137, 39048), (169, 39150), (174, 39162), (193, 39207), (197, 39228), (204, 39261), (262, 39375), (264, 39387),

Gene: ChickenPhender_137 Start: 81501, Stop: 81917, Start Num: 113

Candidate Starts for ChickenPhender_137:

(15, 81024), (Start: 113 @81501 has 24 MA's), (140, 81558), (157, 81621), (190, 81690), (198, 81735), (213, 81774),

Gene: Chipper1996_1010 Start: 63867, Stop: 64361, Start Num: 114

Candidate Starts for Chipper1996_1010:

(59, 63759), (71, 63798), (Start: 114 @63867 has 14 MA's), (149, 63951), (169, 64023), (183, 64062), (269, 64332),

Gene: Chocolat_100 Start: 63574, Stop: 64068, Start Num: 114

Candidate Starts for Chocolat_100:

(59, 63466), (71, 63505), (Start: 114 @63574 has 14 MA's), (149, 63658), (169, 63730), (183, 63769), (269, 64039),

Gene: Chomp_93 Start: 41443, Stop: 41886, Start Num: 100

Candidate Starts for Chomp_93:

(Start: 100 @41443 has 58 MA's), (118, 41467), (136, 41503), (137, 41506), (169, 41608), (174, 41620), (193, 41665), (197, 41686), (204, 41719), (262, 41833), (264, 41845),

Gene: Chubster_100 Start: 63814, Stop: 64308, Start Num: 114

Candidate Starts for Chubster_100:

(59, 63706), (71, 63745), (Start: 114 @63814 has 14 MA's), (149, 63898), (169, 63970), (183, 64009), (269, 64279),

Gene: CindyLou_97 Start: 41484, Stop: 41927, Start Num: 100

Candidate Starts for CindyLou_97:

(Start: 100 @41484 has 58 MA's), (118, 41508), (136, 41544), (137, 41547), (169, 41649), (174, 41661), (193, 41706), (197, 41727), (204, 41760), (262, 41874), (264, 41886),

Gene: Colucci_103 Start: 64172, Stop: 64684, Start Num: 105

Candidate Starts for Colucci_103:

(Start: 105 @64172 has 2 MA's), (149, 64262), (168, 64316), (200, 64463), (204, 64472), (207, 64481), (265, 64610),

Gene: Courthouse_111 Start: 62522, Stop: 63154, Start Num: 84

Candidate Starts for Courthouse_111:

(43, 62399), (61, 62462), (Start: 65 @62477 has 2 MA's), (Start: 84 @62522 has 5 MA's), (119, 62573), (158, 62684), (200, 62813), (223, 62843), (229, 62855), (247, 62903), (249, 62906),

Gene: Courthouse_162 Start: 84612, Stop: 85181, Start Num: 65
Candidate Starts for Courthouse_162:
(Start: 65 @84612 has 2 MA's), (Start: 83 @84654 has 4 MA's), (92, 84669), (188, 84891), (200, 84948), (208, 84969),

Gene: Crater_54 Start: 35514, Stop: 35963, Start Num: 115
Candidate Starts for Crater_54:
(66, 35433), (Start: 115 @35514 has 8 MA's), (144, 35586), (177, 35682), (192, 35718), (239, 35847), (273, 35952),

Gene: Cumberbatch_45 Start: 30201, Stop: 30692, Start Num: 74
Candidate Starts for Cumberbatch_45:
(Start: 74 @30201 has 8 MA's), (197, 30453), (198, 30468),

Gene: Cursive_225 Start: 113007, Stop: 113447, Start Num: 124
Candidate Starts for Cursive_225:
(42, 112812), (48, 112848), (71, 112920), (75, 112926), (77, 112935), (95, 112965), (101, 112971), (104, 112974), (108, 112980), (Start: 124 @113007 has 7 MA's), (154, 113103), (175, 113154), (203, 113247), (234, 113319), (260, 113373), (266, 113406),

Gene: DalanDe_10 Start: 6059, Stop: 6628, Start Num: 116
Candidate Starts for DalanDe_10:
(Start: 116 @6059 has 2 MA's), (126, 6083), (152, 6149), (156, 6173), (171, 6212), (226, 6356), (227, 6359), (238, 6392), (264, 6461),

Gene: Darolandstone_43 Start: 33080, Stop: 33595, Start Num: 79
Candidate Starts for Darolandstone_43:
(24, 32861), (45, 32987), (Start: 79 @33080 has 11 MA's), (Start: 114 @33119 has 14 MA's), (206, 33359),

Gene: Daubenski_216 Start: 113389, Stop: 113829, Start Num: 124
Candidate Starts for Daubenski_216:
(41, 113191), (42, 113194), (44, 113218), (48, 113230), (49, 113233), (71, 113302), (75, 113308), (77, 113317), (95, 113347), (101, 113353), (Start: 124 @113389 has 7 MA's), (154, 113485), (175, 113536), (203, 113629), (234, 113701), (260, 113755), (266, 113788),

Gene: Derek_96 Start: 41245, Stop: 41688, Start Num: 100
Candidate Starts for Derek_96:
(Start: 100 @41245 has 58 MA's), (118, 41269), (136, 41305), (137, 41308), (169, 41410), (174, 41422), (193, 41467), (197, 41488), (204, 41521), (262, 41635), (264, 41647),

Gene: Dexes_3 Start: 1113, Stop: 1622, Start Num: 112
Candidate Starts for Dexes_3:
(Start: 112 @1113 has 7 MA's), (185, 1308), (186, 1317), (198, 1353), (277, 1575),

Gene: DirtMonster_89 Start: 39741, Stop: 40184, Start Num: 100
Candidate Starts for DirtMonster_89:
(Start: 100 @39741 has 58 MA's), (118, 39765), (136, 39801), (137, 39804), (169, 39906), (174, 39918), (193, 39963), (197, 39984), (204, 40017), (262, 40131), (264, 40143),

Gene: DrYang_96 Start: 63051, Stop: 63563, Start Num: 105
Candidate Starts for DrYang_96:

(Start: 105 @63051 has 2 MA's), (149, 63141), (166, 63192), (200, 63342), (204, 63351), (249, 63438),

Gene: EMSquaredA_63 Start: 42816, Stop: 43277, Start Num: 79

Candidate Starts for EMSquaredA_63:

(34, 42666), (35, 42669), (53, 42744), (54, 42747), (Start: 79 @42816 has 11 MA's), (85, 42822), (134, 42903), (171, 42999), (209, 43116),

Gene: Eastland_44 Start: 30161, Stop: 30652, Start Num: 74

Candidate Starts for Eastland_44:

(Start: 74 @30161 has 8 MA's), (197, 30413), (198, 30428),

Gene: EdgarPoe_100 Start: 63731, Stop: 64225, Start Num: 114

Candidate Starts for EdgarPoe_100:

(59, 63623), (71, 63662), (Start: 114 @63731 has 14 MA's), (149, 63815), (169, 63887), (183, 63926), (269, 64196),

Gene: Eklok_44 Start: 29960, Stop: 30451, Start Num: 74

Candidate Starts for Eklok_44:

(Start: 74 @29960 has 8 MA's), (197, 30212), (198, 30227),

Gene: EleanorGeorge_65 Start: 42284, Stop: 42745, Start Num: 83

Candidate Starts for EleanorGeorge_65:

(Start: 83 @42284 has 4 MA's), (168, 42458), (176, 42485), (200, 42569), (224, 42608), (269, 42737),

Gene: EmmaElysia_95 Start: 39722, Stop: 40165, Start Num: 100

Candidate Starts for EmmaElysia_95:

(Start: 100 @39722 has 58 MA's), (118, 39746), (136, 39782), (137, 39785), (169, 39887), (174, 39899), (193, 39944), (197, 39965), (204, 39998), (262, 40112), (264, 40124),

Gene: EnalisNailo_59 Start: 42622, Stop: 43077, Start Num: 79

Candidate Starts for EnalisNailo_59:

(37, 42490), (38, 42493), (53, 42550), (54, 42553), (Start: 79 @42622 has 11 MA's), (85, 42628), (Start: 100 @42649 has 58 MA's), (134, 42706), (155, 42763), (169, 42799), (209, 42916), (215, 42925), (242, 42985),

Gene: Engineer_51 Start: 31923, Stop: 32384, Start Num: 111

Candidate Starts for Engineer_51:

(Start: 111 @31923 has 4 MA's), (155, 32031), (171, 32070), (176, 32082), (195, 32130), (197, 32142), (206, 32178), (275, 32367), (276, 32370),

Gene: Essence_93 Start: 40709, Stop: 41152, Start Num: 100

Candidate Starts for Essence_93:

(Start: 100 @40709 has 58 MA's), (118, 40733), (136, 40769), (137, 40772), (169, 40874), (174, 40886), (193, 40931), (197, 40952), (204, 40985), (262, 41099), (264, 41111),

Gene: Faja_72 Start: 38688, Stop: 39140, Start Num: 128

Candidate Starts for Faja_72:

(46, 38511), (Start: 110 @38652 has 1 MA's), (Start: 114 @38658 has 14 MA's), (Start: 128 @38688 has 2 MA's), (263, 39084),

Gene: Finch_155 Start: 99620, Stop: 100087, Start Num: 111

Candidate Starts for Finch_155:

(68, 99545), (Start: 111 @99620 has 4 MA's), (167, 99755), (193, 99824), (197, 99845), (200, 99869), (250, 99977), (255, 99995), (268, 100046),

Gene: Finch_154 Start: 99144, Stop: 99620, Start Num: 114

Candidate Starts for Finch_154:

(Start: 114 @99144 has 14 MA's), (139, 99192), (197, 99372), (231, 99462), (236, 99477), (270, 99588),

Gene: Finch_57 Start: 47485, Stop: 47922, Start Num: 96

Candidate Starts for Finch_57:

(Start: 96 @47485 has 1 MA's), (Start: 106 @47497 has 1 MA's), (131, 47542), (176, 47668), (190, 47695), (195, 47713), (213, 47779), (236, 47824), (258, 47881), (259, 47884),

Gene: Firehouse51_66 Start: 45330, Stop: 45791, Start Num: 83

Candidate Starts for Firehouse51_66:

(Start: 83 @45330 has 4 MA's), (168, 45504), (176, 45531), (200, 45615), (224, 45654), (269, 45783),

Gene: Floral_64 Start: 44701, Stop: 45162, Start Num: 79

Candidate Starts for Floral_64:

(34, 44551), (35, 44554), (53, 44629), (54, 44632), (Start: 79 @44701 has 11 MA's), (85, 44707), (134, 44788), (171, 44884), (209, 45001),

Gene: Fludd_96 Start: 39595, Stop: 40038, Start Num: 100

Candidate Starts for Fludd_96:

(Start: 100 @39595 has 58 MA's), (118, 39619), (136, 39655), (137, 39658), (169, 39760), (174, 39772), (193, 39817), (197, 39838), (204, 39871), (262, 39985), (264, 39997),

Gene: Fludd_142 Start: 82309, Stop: 82725, Start Num: 113

Candidate Starts for Fludd_142:

(15, 81832), (Start: 113 @82309 has 24 MA's), (140, 82366), (157, 82429), (190, 82498), (198, 82543), (213, 82582),

Gene: Footloose_54 Start: 31404, Stop: 31829, Start Num: 116

Candidate Starts for Footloose_54:

(37, 31218), (52, 31281), (Start: 116 @31404 has 2 MA's), (155, 31515), (163, 31530), (219, 31677), (221, 31680), (267, 31818),

Gene: Forrest_237 Start: 114096, Stop: 114590, Start Num: 87

Candidate Starts for Forrest_237:

(Start: 87 @114096 has 1 MA's), (103, 114117), (Start: 120 @114144 has 2 MA's), (152, 114231), (176, 114303), (198, 114378), (278, 114585),

Gene: Fransoyer_69 Start: 49557, Stop: 49093, Start Num: 93

Candidate Starts for Fransoyer_69:

(67, 49611), (Start: 93 @49557 has 1 MA's), (151, 49434), (202, 49263), (208, 49248), (212, 49242),

Gene: GMA6_79 Start: 60811, Stop: 61245, Start Num: 97

Candidate Starts for GMA6_79:

(97, 60811), (123, 60850), (142, 60892), (156, 60946), (165, 60967), (196, 61051), (198, 61072),

Gene: GMA6_35 Start: 29073, Stop: 29516, Start Num: 100

Candidate Starts for GMA6_35:

(88, 29058), (Start: 100 @29073 has 58 MA's), (107, 29082), (127, 29121), (139, 29145), (181, 29274), (187, 29286), (188, 29289), (192, 29301), (237, 29424),

Gene: GageAP_46 Start: 34874, Stop: 34401, Start Num: 99

Candidate Starts for GageAP_46:

(Start: 99 @34874 has 1 MA's), (Start: 113 @34859 has 24 MA's), (144, 34787), (149, 34772), (173, 34709), (190, 34670), (200, 34616), (220, 34574), (234, 34538), (256, 34484),

Gene: Gamgam_96 Start: 40155, Stop: 40598, Start Num: 100

Candidate Starts for Gamgam_96:

(Start: 100 @40155 has 58 MA's), (118, 40179), (136, 40215), (137, 40218), (169, 40320), (174, 40332), (193, 40377), (197, 40398), (204, 40431), (262, 40545), (264, 40557),

Gene: Ghost_95 Start: 40155, Stop: 40598, Start Num: 100

Candidate Starts for Ghost_95:

(Start: 100 @40155 has 58 MA's), (118, 40179), (136, 40215), (137, 40218), (169, 40320), (174, 40332), (193, 40377), (197, 40398), (204, 40431), (262, 40545), (264, 40557),

Gene: Grungle_83 Start: 37537, Stop: 37980, Start Num: 100

Candidate Starts for Grungle_83:

(Start: 100 @37537 has 58 MA's), (118, 37561), (136, 37597), (137, 37600), (169, 37702), (174, 37714), (193, 37759), (197, 37780), (204, 37813), (262, 37927), (264, 37939),

Gene: Gudmit_38 Start: 27363, Stop: 27896, Start Num: 106

Candidate Starts for Gudmit_38:

(Start: 106 @27363 has 1 MA's), (122, 27390), (230, 27666), (246, 27711),

Gene: Guppsters_64 Start: 41007, Stop: 41405, Start Num: 126

Candidate Starts for Guppsters_64:

(Start: 72 @40923 has 2 MA's), (126, 41007), (216, 41250), (235, 41289), (252, 41331),

Gene: Gustavo_49 Start: 42016, Stop: 42534, Start Num: 73

Candidate Starts for Gustavo_49:

(Start: 73 @42016 has 11 MA's), (Start: 90 @42046 has 1 MA's), (172, 42232), (200, 42322), (206, 42334), (274, 42529),

Gene: Guwapp_95 Start: 40250, Stop: 40693, Start Num: 100

Candidate Starts for Guwapp_95:

(Start: 100 @40250 has 58 MA's), (118, 40274), (136, 40310), (137, 40313), (169, 40415), (174, 40427), (193, 40472), (197, 40493), (204, 40526), (262, 40640), (264, 40652),

Gene: Gyzlar_3 Start: 1073, Stop: 1582, Start Num: 112

Candidate Starts for Gyzlar_3:

(Start: 112 @1073 has 7 MA's), (185, 1268), (186, 1277), (198, 1313), (277, 1535),

Gene: HFrancette_45 Start: 30939, Stop: 31430, Start Num: 74

Candidate Starts for HFrancette_45:

(Start: 74 @30939 has 8 MA's), (197, 31191), (198, 31206),

Gene: Hestia_63 Start: 34911, Stop: 35363, Start Num: 128

Candidate Starts for Hestia_63:

(46, 34734), (Start: 110 @34875 has 1 MA's), (Start: 114 @34881 has 14 MA's), (Start: 128 @34911 has 2 MA's), (263, 35307),

Gene: HumptyDumpty_100 Start: 63534, Stop: 64028, Start Num: 114
Candidate Starts for HumptyDumpty_100:
(59, 63426), (71, 63465), (Start: 114 @63534 has 14 MA's), (149, 63618), (169, 63690), (183, 63729),
(269, 63999),

Gene: HyRo_132 Start: 82234, Stop: 82650, Start Num: 113
Candidate Starts for HyRo_132:
(15, 81757), (Start: 113 @82234 has 24 MA's), (140, 82291), (157, 82354), (190, 82423), (198,
82468), (213, 82507),

Gene: Hydra_4 Start: 1342, Stop: 1785, Start Num: 115
Candidate Starts for Hydra_4:
(Start: 115 @1342 has 8 MA's), (183, 1525), (197, 1561), (200, 1585), (223, 1630), (240, 1672),

Gene: Ididsumtinwong_46 Start: 30014, Stop: 30484, Start Num: 89
Candidate Starts for Ididsumtinwong_46:
(Start: 70 @29978 has 2 MA's), (Start: 89 @30014 has 2 MA's), (200, 30272), (209, 30290), (222,
30311),

Gene: Ignacio_44 Start: 30842, Stop: 31333, Start Num: 74
Candidate Starts for Ignacio_44:
(Start: 74 @30842 has 8 MA's), (197, 31094), (198, 31109),

Gene: InigoMontoya_97 Start: 40116, Stop: 40559, Start Num: 100
Candidate Starts for InigoMontoya_97:
(Start: 100 @40116 has 58 MA's), (118, 40140), (136, 40176), (137, 40179), (169, 40281), (174,
40293), (193, 40338), (197, 40359), (204, 40392), (262, 40506), (264, 40518),

Gene: Iota_90 Start: 39896, Stop: 40339, Start Num: 100
Candidate Starts for Iota_90:
(Start: 100 @39896 has 58 MA's), (118, 39920), (136, 39956), (137, 39959), (169, 40061), (174,
40073), (193, 40118), (197, 40139), (204, 40172), (262, 40286), (264, 40298),

Gene: JKSyngboy_47 Start: 42615, Stop: 43133, Start Num: 73
Candidate Starts for JKSyngboy_47:
(Start: 73 @42615 has 11 MA's), (Start: 90 @42645 has 1 MA's), (172, 42831), (200, 42921), (206,
42933), (274, 43128),

Gene: JPickles_94 Start: 39386, Stop: 39829, Start Num: 100
Candidate Starts for JPickles_94:
(Start: 100 @39386 has 58 MA's), (118, 39410), (136, 39446), (137, 39449), (169, 39551), (174,
39563), (193, 39608), (197, 39629), (204, 39662), (262, 39776), (264, 39788),

Gene: JaNo_99 Start: 63505, Stop: 63999, Start Num: 114
Candidate Starts for JaNo_99:
(59, 63397), (71, 63436), (Start: 114 @63505 has 14 MA's), (149, 63589), (169, 63661), (183, 63700),
(269, 63970),

Gene: Jada_236 Start: 113382, Stop: 113834, Start Num: 120
Candidate Starts for Jada_236:
(Start: 87 @113334 has 1 MA's), (103, 113355), (Start: 120 @113382 has 2 MA's), (198, 113616),

Gene: Jaygup_96 Start: 40911, Stop: 41354, Start Num: 100

Candidate Starts for Jaygup_96:

(Start: 100 @40911 has 58 MA's), (118, 40935), (136, 40971), (137, 40974), (169, 41076), (174, 41088), (193, 41133), (197, 41154), (204, 41187), (262, 41301), (264, 41313),

Gene: Jedediah_99 Start: 41411, Stop: 41854, Start Num: 100

Candidate Starts for Jedediah_99:

(Start: 100 @41411 has 58 MA's), (118, 41435), (136, 41471), (137, 41474), (169, 41576), (174, 41588), (193, 41633), (197, 41654), (204, 41687), (262, 41801), (264, 41813),

Gene: Jemmno_96 Start: 40861, Stop: 41304, Start Num: 100

Candidate Starts for Jemmno_96:

(Start: 100 @40861 has 58 MA's), (118, 40885), (136, 40921), (137, 40924), (169, 41026), (174, 41038), (193, 41083), (197, 41104), (204, 41137), (262, 41251), (264, 41263),

Gene: Jessibeth14_140 Start: 83080, Stop: 83496, Start Num: 113

Candidate Starts for Jessibeth14_140:

(15, 82603), (Start: 113 @83080 has 24 MA's), (140, 83137), (157, 83200), (190, 83269), (198, 83314), (213, 83353),

Gene: JulietS_89 Start: 38478, Stop: 38861, Start Num: 136

Candidate Starts for JulietS_89:

(Start: 100 @38418 has 58 MA's), (118, 38442), (136, 38478), (137, 38481), (169, 38583), (174, 38595), (193, 38640), (197, 38661), (204, 38694), (262, 38808), (264, 38820),

Gene: JustHall_92 Start: 40063, Stop: 40506, Start Num: 100

Candidate Starts for JustHall_92:

(Start: 100 @40063 has 58 MA's), (118, 40087), (136, 40123), (137, 40126), (169, 40228), (174, 40240), (193, 40285), (197, 40306), (204, 40339), (262, 40453), (264, 40465),

Gene: KBurrousTX_96 Start: 64281, Stop: 64742, Start Num: 110

Candidate Starts for KBurrousTX_96:

(Start: 110 @64281 has 1 MA's), (Start: 124 @64299 has 7 MA's), (162, 64410), (191, 64503), (194, 64521), (197, 64536), (210, 64584),

Gene: Kabreeze_100 Start: 63591, Stop: 64085, Start Num: 114

Candidate Starts for Kabreeze_100:

(59, 63483), (71, 63522), (Start: 114 @63591 has 14 MA's), (149, 63675), (169, 63747), (183, 63786), (269, 64056),

Gene: Kamashten_49 Start: 42108, Stop: 42626, Start Num: 73

Candidate Starts for Kamashten_49:

(Start: 73 @42108 has 11 MA's), (172, 42324), (200, 42414), (206, 42426),

Gene: Kboogie_99 Start: 39707, Stop: 40150, Start Num: 100

Candidate Starts for Kboogie_99:

(Start: 100 @39707 has 58 MA's), (118, 39731), (136, 39767), (137, 39770), (169, 39872), (174, 39884), (193, 39929), (197, 39950), (204, 39983), (262, 40097), (264, 40109),

Gene: Keitabear_50 Start: 43627, Stop: 44148, Start Num: 62

Candidate Starts for Keitabear_50:

(60, 43618), (Start: 62 @43627 has 6 MA's), (Start: 73 @43630 has 11 MA's), (172, 43846), (200, 43936), (206, 43948),

Gene: KentuckyRacer_115 Start: 73819, Stop: 74262, Start Num: 120
Candidate Starts for KentuckyRacer_115:
(Start: 120 @73819 has 2 MA's), (197, 74038), (198, 74053), (214, 74089),

Gene: Kewpiedoll_51 Start: 43059, Stop: 43577, Start Num: 73
Candidate Starts for Kewpiedoll_51:
(60, 43047), (Start: 62 @43056 has 6 MA's), (Start: 73 @43059 has 11 MA's), (172, 43275), (200, 43365), (206, 43377),

Gene: Koguma_92 Start: 38638, Stop: 39081, Start Num: 100
Candidate Starts for Koguma_92:
(Start: 100 @38638 has 58 MA's), (118, 38662), (136, 38698), (137, 38701), (169, 38803), (174, 38815), (193, 38860), (197, 38881), (204, 38914), (262, 39028), (264, 39040),

Gene: Koguma_138 Start: 80718, Stop: 81134, Start Num: 113
Candidate Starts for Koguma_138:
(15, 80241), (Start: 113 @80718 has 24 MA's), (140, 80775), (157, 80838), (190, 80907), (198, 80952), (213, 80991),

Gene: Kroos_19 Start: 14665, Stop: 15102, Start Num: 132
Candidate Starts for Kroos_19:
(Start: 106 @14620 has 1 MA's), (Start: 113 @14629 has 24 MA's), (Start: 132 @14665 has 1 MA's), (148, 14716), (166, 14782), (207, 14926), (228, 14947),

Gene: Kwobi_50 Start: 42725, Stop: 43243, Start Num: 73
Candidate Starts for Kwobi_50:
(Start: 73 @42725 has 11 MA's), (Start: 90 @42755 has 1 MA's), (172, 42941), (200, 43031), (206, 43043),

Gene: LRRHood_134 Start: 82526, Stop: 82942, Start Num: 113
Candidate Starts for LRRHood_134:
(15, 82049), (Start: 113 @82526 has 24 MA's), (140, 82583), (157, 82646), (190, 82715), (198, 82760), (213, 82799),

Gene: LRRHood_90 Start: 40457, Stop: 40900, Start Num: 100
Candidate Starts for LRRHood_90:
(Start: 100 @40457 has 58 MA's), (118, 40481), (136, 40517), (137, 40520), (169, 40622), (174, 40634), (193, 40679), (197, 40700), (204, 40733), (262, 40847), (264, 40859),

Gene: Larnav_229 Start: 113173, Stop: 113613, Start Num: 124
Candidate Starts for Larnav_229:
(42, 112978), (48, 113014), (71, 113086), (75, 113092), (77, 113101), (95, 113131), (101, 113137), (104, 113140), (108, 113146), (Start: 124 @113173 has 7 MA's), (154, 113269), (175, 113320), (203, 113413), (234, 113485), (260, 113539), (266, 113572),

Gene: Latch_96 Start: 40155, Stop: 40598, Start Num: 100
Candidate Starts for Latch_96:
(Start: 100 @40155 has 58 MA's), (118, 40179), (136, 40215), (137, 40218), (169, 40320), (174, 40332), (193, 40377), (197, 40398), (204, 40431), (262, 40545), (264, 40557),

Gene: Lennon_50 Start: 43707, Stop: 44228, Start Num: 62
Candidate Starts for Lennon_50:

(60, 43698), (Start: 62 @43707 has 6 MA's), (Start: 73 @43710 has 11 MA's), (172, 43926), (200, 44016), (206, 44028),

Gene: Licorice_4 Start: 1283, Stop: 1792, Start Num: 112

Candidate Starts for Licorice_4:

(Start: 112 @1283 has 7 MA's), (185, 1478), (186, 1487), (198, 1523), (277, 1745),

Gene: LifeSavor_95 Start: 40843, Stop: 41286, Start Num: 100

Candidate Starts for LifeSavor_95:

(Start: 100 @40843 has 58 MA's), (118, 40867), (136, 40903), (137, 40906), (169, 41008), (174, 41020), (193, 41065), (197, 41086), (204, 41119), (262, 41233), (264, 41245),

Gene: Linus_100 Start: 64039, Stop: 64533, Start Num: 114

Candidate Starts for Linus_100:

(59, 63931), (71, 63970), (Start: 114 @64039 has 14 MA's), (149, 64123), (169, 64195), (183, 64234), (269, 64504),

Gene: LittleShirley_64 Start: 41823, Stop: 42221, Start Num: 126

Candidate Starts for LittleShirley_64:

(Start: 72 @41739 has 2 MA's), (126, 41823), (204, 42048), (216, 42066), (235, 42105), (252, 42147),

Gene: LolaVinca_141 Start: 83494, Stop: 83910, Start Num: 113

Candidate Starts for LolaVinca_141:

(15, 83017), (Start: 113 @83494 has 24 MA's), (140, 83551), (157, 83614), (190, 83683), (198, 83728), (213, 83767),

Gene: Love_55 Start: 44334, Stop: 44852, Start Num: 73

Candidate Starts for Love_55:

(60, 44322), (Start: 62 @44331 has 6 MA's), (Start: 73 @44334 has 11 MA's), (172, 44550), (200, 44640), (206, 44652),

Gene: Lozinak_50 Start: 31978, Stop: 32439, Start Num: 111

Candidate Starts for Lozinak_50:

(Start: 111 @31978 has 4 MA's), (155, 32086), (171, 32125), (176, 32137), (195, 32185), (197, 32197), (206, 32233), (275, 32422), (276, 32425),

Gene: Lton_30 Start: 23640, Stop: 24134, Start Num: 94

Candidate Starts for Lton_30:

(Start: 94 @23640 has 1 MA's), (138, 23715), (141, 23721), (155, 23784), (198, 23916), (215, 23958), (225, 23973),

Gene: Lukilu_131 Start: 83536, Stop: 83952, Start Num: 113

Candidate Starts for Lukilu_131:

(15, 83059), (Start: 113 @83536 has 24 MA's), (140, 83593), (157, 83656), (190, 83725), (198, 83770), (213, 83809),

Gene: Lululemon_222 Start: 112033, Stop: 112500, Start Num: 108

Candidate Starts for Lululemon_222:

(42, 111865), (48, 111901), (71, 111973), (75, 111979), (77, 111988), (95, 112018), (101, 112024), (104, 112027), (108, 112033), (Start: 124 @112060 has 7 MA's), (154, 112156), (175, 112207), (203, 112300), (234, 112372), (260, 112426), (266, 112459),

Gene: Lymara_98 Start: 62394, Stop: 62876, Start Num: 114

Candidate Starts for Lymara_98:

(36, 62202), (59, 62298), (Start: 114 @62394 has 14 MA's), (166, 62526),

Gene: Mangeria_141 Start: 83337, Stop: 83753, Start Num: 113

Candidate Starts for Mangeria_141:

(15, 82860), (Start: 113 @83337 has 24 MA's), (140, 83394), (157, 83457), (190, 83526), (198, 83571), (213, 83610),

Gene: Marteena_62 Start: 42816, Stop: 43277, Start Num: 79

Candidate Starts for Marteena_62:

(34, 42666), (35, 42669), (53, 42744), (54, 42747), (Start: 79 @42816 has 11 MA's), (85, 42822), (134, 42903), (171, 42999), (209, 43116),

Gene: Matteo_53 Start: 35852, Stop: 36313, Start Num: 79

Candidate Starts for Matteo_53:

(34, 35702), (53, 35780), (54, 35783), (Start: 79 @35852 has 11 MA's), (85, 35858), (134, 35939), (171, 36035), (209, 36152),

Gene: McGee_97 Start: 39339, Stop: 39782, Start Num: 100

Candidate Starts for McGee_97:

(Start: 100 @39339 has 58 MA's), (118, 39363), (136, 39399), (137, 39402), (169, 39504), (174, 39516), (193, 39561), (197, 39582), (204, 39615), (262, 39729), (264, 39741),

Gene: Mcklovin_2 Start: 532, Stop: 981, Start Num: 115

Candidate Starts for Mcklovin_2:

(78, 484), (86, 499), (Start: 99 @514 has 1 MA's), (Start: 115 @532 has 8 MA's), (159, 658), (169, 676), (177, 694), (181, 703), (189, 739), (200, 775), (218, 811), (247, 874), (253, 886),

Gene: MiaZeal_116 Start: 63594, Stop: 64151, Start Num: 84

Candidate Starts for MiaZeal_116:

(61, 63534), (Start: 65 @63549 has 2 MA's), (Start: 84 @63594 has 5 MA's), (119, 63645), (158, 63756), (200, 63885), (223, 63915), (229, 63927), (247, 63975), (249, 63978),

Gene: MikeLiesIn_142 Start: 83297, Stop: 83713, Start Num: 113

Candidate Starts for MikeLiesIn_142:

(15, 82820), (Start: 113 @83297 has 24 MA's), (140, 83354), (157, 83417), (190, 83486), (198, 83531), (213, 83570),

Gene: Mildred21_232 Start: 111445, Stop: 111885, Start Num: 124

Candidate Starts for Mildred21_232:

(108, 111418), (Start: 124 @111445 has 7 MA's), (175, 111592), (203, 111685), (234, 111757), (260, 111811), (266, 111844),

Gene: Mojorita_45 Start: 30760, Stop: 31281, Start Num: 80

Candidate Starts for Mojorita_45:

(Start: 80 @30760 has 3 MA's), (209, 31048), (233, 31099), (245, 31132), (249, 31138), (257, 31168),

Gene: Momo_95 Start: 40155, Stop: 40598, Start Num: 100

Candidate Starts for Momo_95:

(Start: 100 @40155 has 58 MA's), (118, 40179), (136, 40215), (137, 40218), (169, 40320), (174, 40332), (193, 40377), (197, 40398), (204, 40431), (262, 40545), (264, 40557),

Gene: MoontowerMania_50 Start: 43336, Stop: 43860, Start Num: 73

Candidate Starts for MoontowerMania_50:

(69, 43324), (71, 43333), (Start: 73 @43336 has 11 MA's), (172, 43558), (200, 43648), (206, 43660),

Gene: Mordred_100 Start: 63630, Stop: 64124, Start Num: 114

Candidate Starts for Mordred_100:

(59, 63522), (71, 63561), (Start: 114 @63630 has 14 MA's), (149, 63714), (169, 63786), (183, 63825), (269, 64095),

Gene: Morrissey_52 Start: 39471, Stop: 38908, Start Num: 62

Candidate Starts for Morrissey_52:

(58, 39495), (Start: 62 @39471 has 6 MA's), (63, 39468), (Start: 70 @39450 has 2 MA's), (98, 39399), (153, 39273), (168, 39225), (178, 39192), (182, 39180), (190, 39153),

Gene: MortyNRick_64 Start: 42082, Stop: 42537, Start Num: 83

Candidate Starts for MortyNRick_64:

(Start: 83 @42082 has 4 MA's), (102, 42106), (Start: 150 @42211 has 1 MA's), (176, 42283), (254, 42475),

Gene: MortyNRick_68 Start: 43724, Stop: 44188, Start Num: 114

Candidate Starts for MortyNRick_68:

(Start: 114 @43724 has 14 MA's), (141, 43778), (179, 43904), (188, 43925), (208, 44000), (248, 44084), (251, 44090),

Gene: Ms6_60 Start: 36767, Stop: 37165, Start Num: 126

Candidate Starts for Ms6_60:

(Start: 72 @36683 has 2 MA's), (126, 36767), (216, 37010), (235, 37049), (252, 37091),

Gene: Mutaforma13_69 Start: 44640, Stop: 45101, Start Num: 83

Candidate Starts for Mutaforma13_69:

(Start: 83 @44640 has 4 MA's), (168, 44814), (176, 44841), (200, 44925), (224, 44964), (269, 45093),

Gene: Myrna_95 Start: 42678, Stop: 43148, Start Num: 81

Candidate Starts for Myrna_95:

(27, 42480), (Start: 81 @42678 has 2 MA's), (104, 42711), (Start: 116 @42726 has 2 MA's), (130, 42756), (137, 42771), (145, 42798), (164, 42858), (169, 42873), (171, 42876), (174, 42885), (234, 43035), (264, 43107), (271, 43137),

Gene: Naija_95 Start: 40155, Stop: 40598, Start Num: 100

Candidate Starts for Naija_95:

(Start: 100 @40155 has 58 MA's), (118, 40179), (136, 40215), (137, 40218), (169, 40320), (174, 40332), (193, 40377), (197, 40398), (204, 40431), (262, 40545), (264, 40557),

Gene: Nappy_98 Start: 41881, Stop: 42324, Start Num: 100

Candidate Starts for Nappy_98:

(Start: 100 @41881 has 58 MA's), (118, 41905), (136, 41941), (137, 41944), (169, 42046), (174, 42058), (193, 42103), (197, 42124), (204, 42157), (262, 42271), (264, 42283),

Gene: Neobush_64 Start: 42273, Stop: 42734, Start Num: 79

Candidate Starts for Neobush_64:

(57, 42207), (Start: 79 @42273 has 11 MA's), (155, 42420), (169, 42456), (180, 42483), (197, 42531), (209, 42573), (215, 42582), (242, 42642),

Gene: Ngannou_92 Start: 39137, Stop: 39580, Start Num: 100

Candidate Starts for Ngannou_92:

(Start: 100 @39137 has 58 MA's), (118, 39161), (136, 39197), (137, 39200), (169, 39302), (174, 39314), (193, 39359), (197, 39380), (204, 39413), (262, 39527), (264, 39539),

Gene: PacManQ_223 Start: 112060, Stop: 112500, Start Num: 124

Candidate Starts for PacManQ_223:

(42, 111865), (48, 111901), (71, 111973), (75, 111979), (77, 111988), (95, 112018), (101, 112024), (104, 112027), (108, 112033), (Start: 124 @112060 has 7 MA's), (154, 112156), (175, 112207), (203, 112300), (234, 112372), (260, 112426), (266, 112459),

Gene: PapayaSalad_44 Start: 30268, Stop: 30774, Start Num: 70

Candidate Starts for PapayaSalad_44:

(Start: 70 @30268 has 2 MA's), (Start: 89 @30304 has 2 MA's), (200, 30562), (209, 30580), (222, 30601),

Gene: Patter_96 Start: 40172, Stop: 40615, Start Num: 100

Candidate Starts for Patter_96:

(Start: 100 @40172 has 58 MA's), (118, 40196), (136, 40232), (137, 40235), (169, 40337), (174, 40349), (193, 40394), (197, 40415), (204, 40448), (262, 40562), (264, 40574),

Gene: Persimmon_162 Start: 90873, Stop: 91259, Start Num: 125

Candidate Starts for Persimmon_162:

(Start: 105 @90837 has 2 MA's), (109, 90843), (Start: 125 @90873 has 2 MA's), (154, 90942), (192, 91029), (208, 91095),

Gene: Phistory_56 Start: 36066, Stop: 36515, Start Num: 115

Candidate Starts for Phistory_56:

(66, 35985), (Start: 115 @36066 has 8 MA's), (144, 36138), (177, 36234), (192, 36270), (239, 36399), (243, 36405), (273, 36504),

Gene: Phlegm_98 Start: 40155, Stop: 40598, Start Num: 100

Candidate Starts for Phlegm_98:

(Start: 100 @40155 has 58 MA's), (118, 40179), (136, 40215), (137, 40218), (169, 40320), (174, 40332), (193, 40377), (197, 40398), (204, 40431), (262, 40545), (264, 40557),

Gene: PhorbesPhlower_38 Start: 28562, Stop: 29011, Start Num: 115

Candidate Starts for PhorbesPhlower_38:

(66, 28481), (Start: 115 @28562 has 8 MA's), (177, 28730), (192, 28766), (239, 28895), (273, 29000),

Gene: Phox_138 Start: 83560, Stop: 83976, Start Num: 113

Candidate Starts for Phox_138:

(15, 83083), (Start: 113 @83560 has 24 MA's), (140, 83617), (157, 83680), (190, 83749), (198, 83794), (213, 83833),

Gene: Phusco_96 Start: 40920, Stop: 41363, Start Num: 100

Candidate Starts for Phusco_96:

(Start: 100 @40920 has 58 MA's), (118, 40944), (136, 40980), (137, 40983), (169, 41085), (174, 41097), (193, 41142), (197, 41163), (204, 41196), (262, 41310), (264, 41322),

Gene: Picard_45 Start: 30958, Stop: 31479, Start Num: 80

Candidate Starts for Picard_45:

(Start: 80 @30958 has 3 MA's), (209, 31246), (249, 31336), (257, 31366), (272, 31432),

Gene: Piccadilly_44 Start: 30160, Stop: 30651, Start Num: 74

Candidate Starts for Piccadilly_44:

(Start: 74 @30160 has 8 MA's), (197, 30412), (198, 30427),

Gene: Pio_145 Start: 85169, Stop: 85585, Start Num: 113

Candidate Starts for Pio_145:

(15, 84692), (Start: 113 @85169 has 24 MA's), (140, 85226), (157, 85289), (190, 85358), (198, 85403), (213, 85442),

Gene: Pivoine_95 Start: 40155, Stop: 40598, Start Num: 100

Candidate Starts for Pivoine_95:

(Start: 100 @40155 has 58 MA's), (118, 40179), (136, 40215), (137, 40218), (169, 40320), (174, 40332), (193, 40377), (197, 40398), (204, 40431), (262, 40545), (264, 40557),

Gene: Plumbus_66 Start: 41519, Stop: 42001, Start Num: 72

Candidate Starts for Plumbus_66:

(Start: 72 @41519 has 2 MA's), (126, 41603), (216, 41846), (235, 41885), (252, 41927),

Gene: Pollux_66 Start: 44701, Stop: 45162, Start Num: 79

Candidate Starts for Pollux_66:

(34, 44551), (35, 44554), (53, 44629), (54, 44632), (Start: 79 @44701 has 11 MA's), (85, 44707), (134, 44788), (171, 44884), (209, 45001),

Gene: PrincessTrina_101 Start: 63821, Stop: 64315, Start Num: 114

Candidate Starts for PrincessTrina_101:

(59, 63713), (71, 63752), (Start: 114 @63821 has 14 MA's), (149, 63905), (169, 63977), (183, 64016), (269, 64286),

Gene: Quasimodo_96 Start: 40685, Stop: 41128, Start Num: 100

Candidate Starts for Quasimodo_96:

(Start: 100 @40685 has 58 MA's), (118, 40709), (136, 40745), (137, 40748), (169, 40850), (174, 40862), (193, 40907), (197, 40928), (204, 40961), (262, 41075), (264, 41087),

Gene: Rabinovish_140 Start: 83892, Stop: 84308, Start Num: 113

Candidate Starts for Rabinovish_140:

(15, 83415), (Start: 113 @83892 has 24 MA's), (140, 83949), (157, 84012), (190, 84081), (198, 84126), (213, 84165),

Gene: Rahel_95 Start: 40512, Stop: 40955, Start Num: 100

Candidate Starts for Rahel_95:

(Start: 100 @40512 has 58 MA's), (118, 40536), (136, 40572), (137, 40575), (169, 40677), (174, 40689), (193, 40734), (197, 40755), (204, 40788), (262, 40902), (264, 40914),

Gene: Raleigh_43 Start: 33449, Stop: 33964, Start Num: 79

Candidate Starts for Raleigh_43:

(Start: 79 @33449 has 11 MA's), (Start: 114 @33488 has 14 MA's), (206, 33728), (209, 33734),

Gene: Ronan_89 Start: 37956, Stop: 38399, Start Num: 100

Candidate Starts for Ronan_89:

(Start: 100 @37956 has 58 MA's), (118, 37980), (136, 38016), (137, 38019), (169, 38121), (174, 38133), (193, 38178), (197, 38199), (204, 38232), (262, 38346), (264, 38358),

Gene: RosiePosie_100 Start: 63686, Stop: 64180, Start Num: 114

Candidate Starts for RosiePosie_100:

(59, 63578), (71, 63617), (Start: 114 @63686 has 14 MA's), (149, 63770), (169, 63842), (177, 63860), (183, 63881),

Gene: SV1_42 Start: 29657, Stop: 30169, Start Num: 81

Candidate Starts for SV1_42:

(Start: 81 @29657 has 2 MA's), (195, 29882), (232, 29981), (245, 30020), (249, 30026), (257, 30056),

Gene: SadLad_28 Start: 14537, Stop: 14064, Start Num: 133

Candidate Starts for SadLad_28:

(1, 15395), (2, 15374), (3, 15371), (4, 15356), (5, 15353), (6, 15335), (7, 15299), (8, 15278), (9, 15239), (10, 15185), (11, 15182), (12, 15173), (13, 15155), (14, 15065), (18, 15011), (19, 14957), (21, 14912), (22, 14870), (23, 14864), (26, 14822), (28, 14816), (32, 14798), (33, 14792), (36, 14780), (39, 14759), (40, 14756), (53, 14705), (56, 14693), (59, 14681), (64, 14660), (82, 14621), (118, 14564), (Start: 133 @14537 has 1 MA's), (170, 14405), (176, 14387), (191, 14321), (197, 14282), (201, 14258), (205, 14249), (244, 14168),

Gene: Samy_46 Start: 31456, Stop: 31815, Start Num: 150

Candidate Starts for Samy_46:

(Start: 150 @31456 has 1 MA's), (160, 31495), (169, 31516), (175, 31528), (187, 31555), (197, 31591), (198, 31606), (208, 31636),

Gene: Saronaya_49 Start: 42016, Stop: 42534, Start Num: 73

Candidate Starts for Saronaya_49:

(Start: 73 @42016 has 11 MA's), (Start: 90 @42046 has 1 MA's), (172, 42232), (200, 42322), (206, 42334), (274, 42529),

Gene: Sauce_96 Start: 40004, Stop: 40447, Start Num: 100

Candidate Starts for Sauce_96:

(Start: 100 @40004 has 58 MA's), (118, 40028), (136, 40064), (137, 40067), (169, 40169), (174, 40181), (193, 40226), (197, 40247), (204, 40280), (262, 40394), (264, 40406),

Gene: Scavito_101 Start: 63679, Stop: 64173, Start Num: 114

Candidate Starts for Scavito_101:

(59, 63571), (71, 63610), (Start: 114 @63679 has 14 MA's), (149, 63763), (169, 63835), (183, 63874), (269, 64144),

Gene: Seanderson_3 Start: 1096, Stop: 1605, Start Num: 112

Candidate Starts for Seanderson_3:

(Start: 83 @1057 has 4 MA's), (Start: 112 @1096 has 7 MA's), (185, 1291), (186, 1300), (198, 1336), (277, 1558),

Gene: Sebata_97 Start: 41640, Stop: 42083, Start Num: 100

Candidate Starts for Sebata_97:

(Start: 100 @41640 has 58 MA's), (118, 41664), (136, 41700), (137, 41703), (169, 41805), (174, 41817), (193, 41862), (197, 41883), (204, 41916), (262, 42030), (264, 42042),

Gene: Sedona_50 Start: 43310, Stop: 43828, Start Num: 73

Candidate Starts for Sedona_50:

(Start: 73 @43310 has 11 MA's), (Start: 90 @43340 has 1 MA's), (172, 43526), (200, 43616), (206, 43628),

Gene: Shaqnato_134 Start: 81274, Stop: 81690, Start Num: 113

Candidate Starts for Shaqnato_134:

(15, 80797), (Start: 113 @81274 has 24 MA's), (140, 81331), (157, 81394), (190, 81463), (198, 81508), (213, 81547),

Gene: Shaqnato_88 Start: 38879, Stop: 39322, Start Num: 100

Candidate Starts for Shaqnato_88:

(Start: 100 @38879 has 58 MA's), (118, 38903), (136, 38939), (137, 38942), (169, 39044), (174, 39056), (193, 39101), (197, 39122), (204, 39155), (262, 39269), (264, 39281),

Gene: Shelob_143 Start: 84076, Stop: 84492, Start Num: 113

Candidate Starts for Shelob_143:

(15, 83599), (Start: 113 @84076 has 24 MA's), (140, 84133), (157, 84196), (190, 84265), (198, 84310), (213, 84349),

Gene: Shifa_130 Start: 81500, Stop: 81916, Start Num: 113

Candidate Starts for Shifa_130:

(15, 81023), (Start: 113 @81500 has 24 MA's), (140, 81557), (157, 81620), (190, 81689), (198, 81734), (213, 81773),

Gene: Shivanishola_50 Start: 42031, Stop: 42549, Start Num: 73

Candidate Starts for Shivanishola_50:

(60, 42019), (Start: 62 @42028 has 6 MA's), (Start: 73 @42031 has 11 MA's), (172, 42247), (200, 42337), (206, 42349),

Gene: Shnickers_96 Start: 40911, Stop: 41354, Start Num: 100

Candidate Starts for Shnickers_96:

(Start: 100 @40911 has 58 MA's), (118, 40935), (136, 40971), (137, 40974), (169, 41076), (174, 41088), (193, 41133), (197, 41154), (204, 41187), (262, 41301), (264, 41313),

Gene: SilverDipper_97 Start: 40155, Stop: 40598, Start Num: 100

Candidate Starts for SilverDipper_97:

(Start: 100 @40155 has 58 MA's), (118, 40179), (136, 40215), (137, 40218), (169, 40320), (174, 40332), (193, 40377), (197, 40398), (204, 40431), (262, 40545), (264, 40557),

Gene: Sitar_50 Start: 43707, Stop: 44228, Start Num: 62

Candidate Starts for Sitar_50:

(60, 43698), (Start: 62 @43707 has 6 MA's), (Start: 73 @43710 has 11 MA's), (172, 43926), (200, 44016), (206, 44028),

Gene: Smairt_2 Start: 926, Stop: 1435, Start Num: 112

Candidate Starts for Smairt_2:

(Start: 112 @926 has 7 MA's), (185, 1121), (186, 1130), (198, 1166), (277, 1388),

Gene: SmallFry_96 Start: 40106, Stop: 40549, Start Num: 100

Candidate Starts for SmallFry_96:

(Start: 100 @40106 has 58 MA's), (118, 40130), (136, 40166), (137, 40169), (169, 40271), (174, 40283), (193, 40328), (197, 40349), (204, 40382), (262, 40496), (264, 40508),

Gene: Smeagol_2 Start: 927, Stop: 1436, Start Num: 112

Candidate Starts for Smeagol_2:

(Start: 112 @927 has 7 MA's), (185, 1122), (186, 1131), (198, 1167), (277, 1389),

Gene: Smoothie_51 Start: 31978, Stop: 32439, Start Num: 111

Candidate Starts for Smoothie_51:

(Start: 111 @31978 has 4 MA's), (155, 32086), (171, 32125), (176, 32137), (195, 32185), (197, 32197), (206, 32233), (275, 32422), (276, 32425),

Gene: SoJo_43 Start: 31466, Stop: 31978, Start Num: 80

Candidate Starts for SoJo_43:

(Start: 80 @31466 has 3 MA's), (121, 31523), (233, 31799), (257, 31868),

Gene: Sour_34 Start: 32659, Stop: 32288, Start Num: 146

Candidate Starts for Sour_34:

(101, 32755), (Start: 146 @32659 has 1 MA's), (155, 32617), (162, 32599), (164, 32596), (177, 32557), (211, 32449), (261, 32329),

Gene: Sprinklers_91 Start: 39376, Stop: 39819, Start Num: 100

Candidate Starts for Sprinklers_91:

(Start: 100 @39376 has 58 MA's), (118, 39400), (136, 39436), (137, 39439), (169, 39541), (174, 39553), (193, 39598), (197, 39619), (204, 39652), (262, 39766), (264, 39778),

Gene: Squint_114 Start: 63713, Stop: 64345, Start Num: 84

Candidate Starts for Squint_114:

(43, 63590), (61, 63653), (Start: 65 @63668 has 2 MA's), (Start: 84 @63713 has 5 MA's), (119, 63764), (158, 63875), (200, 64004), (223, 64034), (229, 64046), (247, 64094), (249, 64097),

Gene: StubbySaigey_98 Start: 39443, Stop: 39886, Start Num: 100

Candidate Starts for StubbySaigey_98:

(Start: 100 @39443 has 58 MA's), (118, 39467), (136, 39503), (137, 39506), (169, 39608), (174, 39620), (193, 39665), (197, 39686), (204, 39719), (262, 39833), (264, 39845),

Gene: Superphikiman_113 Start: 62804, Stop: 63436, Start Num: 84

Candidate Starts for Superphikiman_113:

(43, 62681), (61, 62744), (Start: 65 @62759 has 2 MA's), (Start: 84 @62804 has 5 MA's), (119, 62855), (158, 62966), (200, 63095), (223, 63125), (229, 63137), (247, 63185), (249, 63188),

Gene: Superphikiman_163 Start: 84350, Stop: 84877, Start Num: 83

Candidate Starts for Superphikiman_163:

(Start: 65 @84308 has 2 MA's), (Start: 83 @84350 has 4 MA's), (92, 84365), (188, 84587), (200, 84644), (208, 84665),

Gene: Sushi23_223 Start: 114010, Stop: 114450, Start Num: 124

Candidate Starts for Sushi23_223:

(42, 113815), (48, 113851), (71, 113923), (75, 113929), (77, 113938), (95, 113968), (101, 113974), (104, 113977), (108, 113983), (Start: 124 @114010 has 7 MA's), (154, 114106), (175, 114157), (203, 114250), (234, 114322), (260, 114376), (266, 114409),

Gene: Targaryen_222 Start: 114182, Stop: 114622, Start Num: 124

Candidate Starts for Targaryen_222:

(71, 114095), (75, 114101), (77, 114110), (95, 114140), (101, 114146), (Start: 124 @114182 has 7 MA's), (154, 114278), (175, 114329), (203, 114422), (234, 114494), (260, 114548), (266, 114581),

Gene: Teardrop_140 Start: 81782, Stop: 82198, Start Num: 113

Candidate Starts for Teardrop_140:

(15, 81305), (Start: 113 @81782 has 24 MA's), (140, 81839), (157, 81902), (190, 81971), (198, 82016), (213, 82055),

Gene: Thing3_49 Start: 42108, Stop: 42626, Start Num: 73
Candidate Starts for Thing3_49:
(Start: 73 @42108 has 11 MA's), (172, 42324), (200, 42414), (206, 42426),

Gene: ToastyFinz_42 Start: 32290, Stop: 32811, Start Num: 79
Candidate Starts for ToastyFinz_42:
(30, 32113), (58, 32227), (Start: 79 @32290 has 11 MA's), (140, 32383), (209, 32578), (233, 32629),
(249, 32668), (257, 32698),

Gene: Tophat_101 Start: 63868, Stop: 64362, Start Num: 114
Candidate Starts for Tophat_101:
(59, 63760), (71, 63799), (Start: 114 @63868 has 14 MA's), (149, 63952), (169, 64024), (183, 64063),
(269, 64333),

Gene: Totinger_66 Start: 40465, Stop: 40947, Start Num: 72
Candidate Starts for Totinger_66:
(Start: 72 @40465 has 2 MA's), (126, 40549), (216, 40792), (235, 40831), (252, 40873),

Gene: Trinitium_92 Start: 39181, Stop: 39624, Start Num: 100
Candidate Starts for Trinitium_92:
(Start: 100 @39181 has 58 MA's), (118, 39205), (136, 39241), (137, 39244), (169, 39346), (174,
39358), (193, 39403), (197, 39424), (204, 39457), (262, 39571), (264, 39583),

Gene: Tucker_41 Start: 26756, Stop: 26394, Start Num: 129
Candidate Starts for Tucker_41:
(Start: 129 @26756 has 2 MA's), (149, 26708), (190, 26609), (210, 26531), (242, 26471),

Gene: ValleyTerrace_96 Start: 40155, Stop: 40598, Start Num: 100
Candidate Starts for ValleyTerrace_96:
(Start: 100 @40155 has 58 MA's), (118, 40179), (136, 40215), (137, 40218), (169, 40320), (174,
40332), (193, 40377), (197, 40398), (204, 40431), (262, 40545), (264, 40557),

Gene: Vibaki_76 Start: 46752, Stop: 47243, Start Num: 120
Candidate Starts for Vibaki_76:
(Start: 120 @46752 has 2 MA's), (201, 47013),

Gene: Vivi2_54 Start: 43935, Stop: 44456, Start Num: 62
Candidate Starts for Vivi2_54:
(60, 43926), (Start: 62 @43935 has 6 MA's), (Start: 73 @43938 has 11 MA's), (172, 44154), (200,
44244), (206, 44256),

Gene: Vondra_43 Start: 30012, Stop: 30503, Start Num: 74
Candidate Starts for Vondra_43:
(Start: 74 @30012 has 8 MA's), (197, 30264), (198, 30279),

Gene: Yassified_92 Start: 39414, Stop: 39857, Start Num: 100
Candidate Starts for Yassified_92:
(Start: 100 @39414 has 58 MA's), (118, 39438), (136, 39474), (137, 39477), (169, 39579), (174,
39591), (193, 39636), (197, 39657), (204, 39690), (262, 39804), (264, 39816),

Gene: YorkOnyx_50 Start: 42214, Stop: 42732, Start Num: 73
Candidate Starts for YorkOnyx_50:

(Start: 73 @42214 has 11 MA's), (Start: 90 @42244 has 1 MA's), (172, 42430), (200, 42520), (206, 42532),

Gene: YoungMoneyMata_96 Start: 39906, Stop: 40349, Start Num: 100

Candidate Starts for YoungMoneyMata_96:

(Start: 100 @39906 has 58 MA's), (118, 39930), (136, 39966), (137, 39969), (169, 40071), (174, 40083), (193, 40128), (197, 40149), (204, 40182), (262, 40296), (264, 40308),

Gene: Yvonnetastic_131 Start: 74014, Stop: 74502, Start Num: 91

Candidate Starts for Yvonnetastic_131:

(Start: 91 @74014 has 1 MA's), (Start: 124 @74062 has 7 MA's), (Start: 133 @74080 has 1 MA's), (166, 74179), (205, 74311), (229, 74356),

Gene: Zulu_41 Start: 26737, Stop: 26375, Start Num: 129

Candidate Starts for Zulu_41:

(Start: 129 @26737 has 2 MA's), (149, 26689), (190, 26590), (210, 26512), (242, 26452),

Gene: phiHau3_61 Start: 41644, Stop: 41168, Start Num: 113

Candidate Starts for phiHau3_61:

(Start: 113 @41644 has 24 MA's), (143, 41575), (181, 41452), (187, 41440), (195, 41416), (197, 41404), (217, 41344),