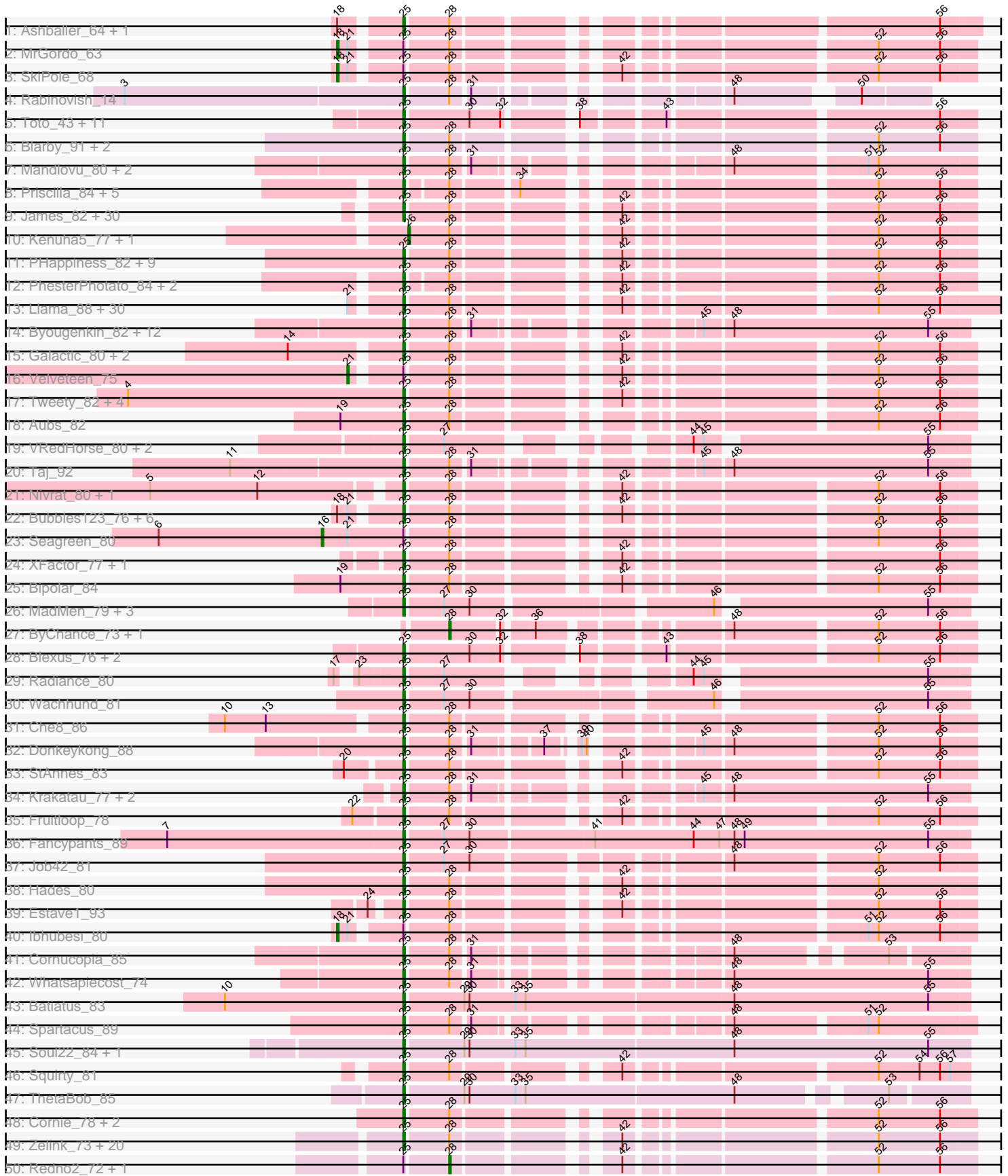
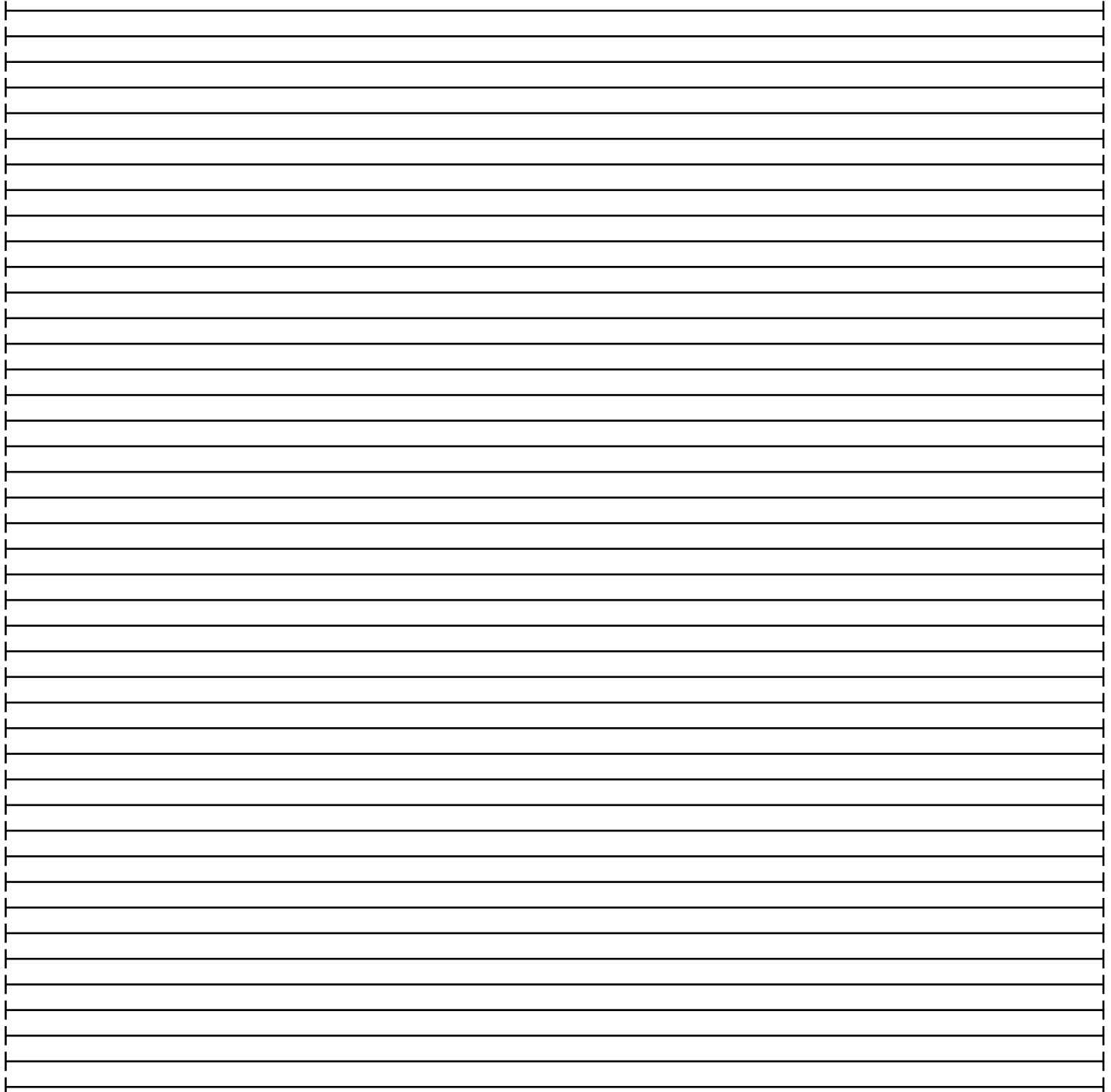
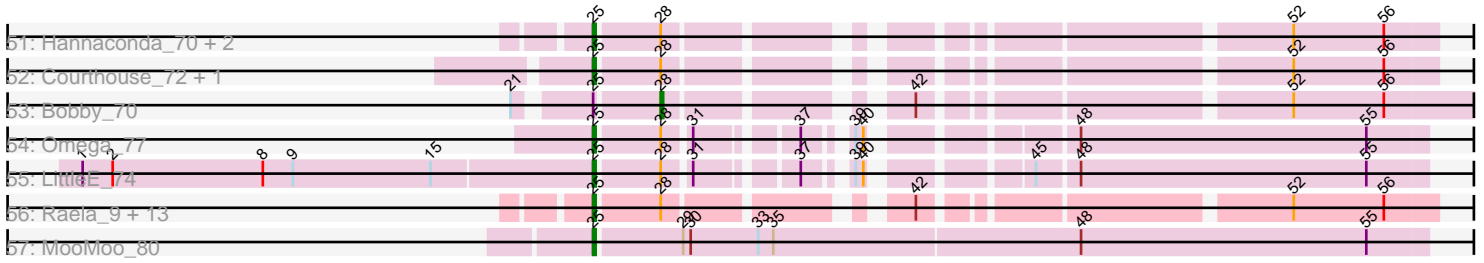


Pham 157565



Pham 157565



Note: Tracks are now grouped by subcluster and scaled. Switching in subcluster is indicated by changes in track color. Track scale is now set by default to display the region 30 bp upstream of start 1 to 30 bp downstream of the last possible start. If this default region is judged to be packed too tightly with annotated starts, the track will be further scaled to only show that region of the ORF with annotated starts. This action will be indicated by adding "Zoomed" to the title. For starts, yellow indicates the location of called starts comprised solely of Glimmer/GeneMark auto-annotations, green indicates the location of called starts with at least 1 manual gene annotation.

Pham 157565 Report

This analysis was run 04/13/24 on database version 558.

Pham number 157565 has 226 members, 13 are drafts.

Phages represented in each track:

- Track 1 : Ashballer_64, JC27_64
- Track 2 : MrGordo_63
- Track 3 : SkiPole_68
- Track 4 : Rabinovish_14
- Track 5 : Toto_43, ABCat_42, Inca_41, BilboSwaggins_43, IHOP_42, Tuco_45, CrystalP_44, Myrale_44, ShamWow_44, StellaBean_42, Phaja_42, Marshmallow_43
- Track 6 : Blarby_91, Jabbawokkie_91, Zapner_90
- Track 7 : Mandlovu_80, Hlubikazi_80, Strokeseat_80
- Track 8 : Priscilla_84, Koella_76, NormanBulbieJr_82, Spartacus_87, Wanda_77, Klein_73
- Track 9 : James_82, Boomer_85, Mozy_88, LunaBlu_84, Ms6_82, Flathead_81, SG4_81, Burwell21_76, Lij_77, Clifton_74, Lorde_81, OlympiaSaint_81, Enby_82, Eish_84, KristaRAM_79, DirtMcgirt_80, Harley_80, Jarcob_81, UncleRicky_80, Drago_78, Latretium_82, Philus_84, Rockne_82, DRBy19_85, Ogopogo_87, Rita_88, Phatniss_78, PMC_78, Avani_90, Marker_93, Mova_80
- Track 10 : Kenuha5_77, Gandalph_79
- Track 11 : PHappiness_82, Deb65_75, Nimbo_74, RitaG_82, Geralt_75, OldBen_79, MilleniumForce_82, Leperchaun_80, JoeyJr_82, Daenerys_81
- Track 12 : PhesterPhotato_84, Omega_79, LittleE_77
- Track 13 : Llama_88, Mandlovu_76, Beelzebub_12, Seabastian_89, VRedHorse_86, Lilbit_10, BigPhil_74, Cerasum_75, Marvin_8, OfUltron_89, Pringar_9, Coco12_78, BAKA_82, Duke13_80, LittleLaf_9, Corazon_9, Ochi17_87, Guppsters_76, PopTart_73, Jinglebell_86, Zerg_82, Clarkson_10, Minerva_79, Sarma624_80, Huphlepuuff_10, SassyB_73, Pound_77, JoieB_10, Hlubikazi_76, Strokeseat_76, Modragons_86
- Track 14 : Byougenkin_82, Royals2015_90, PopTart_77, Wee_91, Eish_88, Girafales_91, Tweety_86, Blexus_80, Florinda_94, SassyB_77, DeadP_86, Quico_91, Phalconet_82
- Track 15 : Galactic_80, MadMen_87, Kumao_59
- Track 16 : Velveteen_75
- Track 17 : Tweety_82, Wee_87, DeadP_82, Donkeykong_86, Taj_88
- Track 18 : Aubs_82
- Track 19 : VRedHorse_80, Pacc40_73, Cornucopia_81
- Track 20 : Taj_92
- Track 21 : Nivrat_80, LilMoolah_82
- Track 22 : Bubbles123_76, Minnie_77, WillSterrel_80, Soul22_82, IrishSherpFalk_81, Pepe_59, Sandalphon_75

- Track 23 : Seagreen_80
- Track 24 : XFactor_77, DLane_83
- Track 25 : Bipolar_84
- Track 26 : MadMen_79, Sabbb_83, Karhdo_80, Kersh_83
- Track 27 : ByChance_73, ShowerHandel_80
- Track 28 : Blexus_76, Leozinho_79, Pippy_76
- Track 29 : Radiance_80
- Track 30 : Wachhund_81
- Track 31 : Che8_86
- Track 32 : Donkeykong_88
- Track 33 : StAnnes_83
- Track 34 : Krakatau_77, Job42_84, BuzzLyseyear_92
- Track 35 : Fruitloop_78
- Track 36 : Fancypants_89
- Track 37 : Job42_81
- Track 38 : Hades_80
- Track 39 : Estave1_93
- Track 40 : lbhubesi_80
- Track 41 : Cornucopia_85
- Track 42 : Whatsapiecost_74
- Track 43 : Batiatus_83
- Track 44 : Spartacus_89
- Track 45 : Soul22_84, Llij_80
- Track 46 : Squirty_81
- Track 47 : ThetaBob_85
- Track 48 : Cornie_78, CaptainTrips_81, MinionDave_77
- Track 49 : Zelink_73, Superphikiman_73, Kalah2_70, EricMillard_74, Ejimix_75, DmpstrDiver_75, Squint_76, Beem_75, JuicyJay_74, NihilNomen_76, Phoebus_78, Dallas_74, Odette_74, Ariel_75, HokkenD_68, Porcelain_75, MiaZeal_76, ThreeRngTarjay_73, Halley_77, Schatzie_70, Hughesyang_74
- Track 50 : Redno2_72, Lucky2013_73
- Track 51 : Hannaconda_70, Phalconet_78, Kingsley_85
- Track 52 : Courthouse_72, Yeet_71
- Track 53 : Bobby_70
- Track 54 : Omega_77
- Track 55 : LittleE_74
- Track 56 : Raela_9, Blackbeetle_9, Batiatus_81, Poise_9, DotProduct_76, Tesla_9, Ardmore_67, Hamulus_80, Filuzino_82, Akhila_78, Phanphagia_80, MilanaBonita_77, Manda_43, Shauna1_81
- Track 57 : MooMoo_80

Summary of Final Annotations (See graph section above for start numbers):

The start number called the most often in the published annotations is 25, it was called in 202 of the 213 non-draft genes in the pham.

Genes that call this "Most Annotated" start:

- ABCat_42, Akhila_78, Ardmore_67, Ariel_75, Ashballer_64, Aubs_82, Avani_90, BAKA_82, Batiatus_81, Batiatus_83, Beelzebub_12, Beem_75, BigPhil_74, BilboSwaggins_43, Bipolar_84, Blackbeetle_9, Blarby_91, Blexus_76, Blexus_80,

Boomer_85, Bubbles123_76, Burwell21_76, BuzzLyseyear_92, Byougenkin_82, CaptainTrips_81, Cerasum_75, Che8_86, Clarkson_10, Clifton_74, Coco12_78, Corazon_9, Cornie_78, Cornucopia_81, Cornucopia_85, Courthouse_72, CrystalP_44, DLane_83, DRBy19_85, Daenerys_81, Dallas_74, DeadP_82, DeadP_86, Deb65_75, DirtMcgirt_80, DmpstrDiver_75, Donkeykong_86, Donkeykong_88, DotProduct_76, Drago_78, Duke13_80, Eish_84, Eish_88, Ejimix_75, Enby_82, EricMillard_74, Estave1_93, Fancypants_89, Filuzino_82, Flathead_81, Florinda_94, Fruitloop_78, Galactic_80, Geralt_75, Girafales_91, Guppsters_76, Hades_80, Halley_77, Hamulus_80, Hannaconda_70, Harley_80, Hlubikazi_76, Hlubikazi_80, HokkenD_68, Hughesyang_74, Huphlepuuff_10, IHOP_42, Inca_41, IrishSherpFalk_81, JC27_64, Jabbawokkie_91, James_82, Jacob_81, Jinglebell_86, Job42_81, Job42_84, JoeyJr_82, JoieB_10, JuicyJay_74, Kalah2_70, Karhdo_80, Kersh_83, Kingsley_85, Klein_73, Koella_76, Krakatau_77, KristaRAM_79, Kumao_59, Latretium_82, Leozinho_79, Leperchaun_80, LilMoolah_82, Lilbit_10, LittleE_74, LittleE_77, LittleLaf_9, Llama_88, Llij_77, Llij_80, Lorde_81, LunaBlu_84, MadMen_79, MadMen_87, Manda_43, Mandlovu_76, Mandlovu_80, Marker_93, Marshmallow_43, Marvin_8, MiaZeal_76, MilanaBonita_77, MilleniumForce_82, Minerva_79, MinionDave_77, Minnie_77, Modragons_86, MooMoo_80, Mova_80, Mozy_88, Ms6_82, Myrale_44, NihilNomen_76, Nimbo_74, Nivrat_80, NormanBulbieJr_82, Ochi17_87, Odette_74, OfUltron_89, Ogopogo_87, OldBen_79, OlympiaSaint_81, Omega_77, Omega_79, PHappiness_82, PMC_78, Pacc40_73, Pepe_59, Phaja_42, Phalconet_78, Phalconet_82, Phanphagia_80, Phatniss_78, PhesterPhotato_84, Philus_84, Phoebus_78, Pippy_76, Poise_9, PopTart_73, PopTart_77, Porcelain_75, Pound_77, Pringar_9, Priscilla_84, Quico_91, Rabinovish_14, Radiance_80, Raela_9, RitaG_82, Rita_88, Rockne_82, Royals2015_90, SG4_81, Sabbb_83, Sandalphon_75, Sarma624_80, SassyB_73, SassyB_77, Schatzie_70, Seabastian_89, ShamWow_44, Shauna1_81, Soul22_82, Soul22_84, Spartacus_87, Spartacus_89, Squint_76, Squirty_81, StAnnes_83, StellaBean_42, Strokeseat_76, Strokeseat_80, Superphikiman_73, Taj_88, Taj_92, Tesla_9, ThetaBob_85, ThreeRngTarjay_73, Toto_43, Tuc0_45, Tweety_82, Tweety_86, UncleRicky_80, VRedHorse_80, VRedHorse_86, Wachhund_81, Wanda_77, Wee_87, Wee_91, Whatsapiecost_74, WillSterrel_80, XFactor_77, Yeet_71, Zapner_90, Zelink_73, Zerg_82,

Genes that have the "Most Annotated" start but do not call it:

- Bobby_70, lbhubesi_80, Lucky2013_73, MrGordo_63, Redno2_72, Seagreen_80, SkiPole_68, Velveteen_75,

Genes that do not have the "Most Annotated" start:

- ByChance_73, Gandalph_79, Kenuha5_77, ShowerHandel_80,

Summary by start number:

Start 16:

- Found in 1 of 226 (0.4%) of genes in pham
- Manual Annotations of this start: 1 of 213
- Called 100.0% of time when present
- Phage (with cluster) where this start called: Seagreen_80 (F1),

Start 18:

- Found in 12 of 226 (5.3%) of genes in pham
- Manual Annotations of this start: 3 of 213
- Called 25.0% of time when present

- Phage (with cluster) where this start called: Ibhubesi_80 (F1), MrGordo_63 (A1), SkiPole_68 (A1),

Start 21:

- Found in 44 of 226 (19.5%) of genes in pham
- Manual Annotations of this start: 1 of 213
- Called 2.3% of time when present
- Phage (with cluster) where this start called: Velveteen_75 (F1),

Start 25:

- Found in 222 of 226 (98.2%) of genes in pham
- Manual Annotations of this start: 202 of 213
- Called 96.4% of time when present
- Phage (with cluster) where this start called: ABCat_42 (E), Akhila_78 (F1), Ardmore_67 (F1), Ariel_75 (J), Ashballer_64 (A1), Aubs_82 (F1), Avani_90 (F2), BAKA_82 (J), Batiatus_81 (F1), Batiatus_83 (F1), Beelzebub_12 (S), Beem_75 (J), BigPhil_74 (F1), BilboSwaggins_43 (E), Bipolar_84 (F1), Blackbeetle_9 (S), Blarby_91 (F), Blexus_76 (F1), Blexus_80 (F1), Boomer_85 (F1), Bubbles123_76 (F1), Burwell21_76 (F1), BuzzLyseyear_92 (F1), Byougenkin_82 (F1), CaptainTrips_81 (F1), Cerasum_75 (F1), Che8_86 (F1), Clarkson_10 (S), Clifton_74 (F1), Coco12_78 (F1), Corazon_9 (S), Cornie_78 (F5), Cornucopia_81 (F1), Cornucopia_85 (F1), Courthouse_72 (J), CrystalP_44 (E), DLane_83 (F1), DRBy19_85 (F1), Daenerys_81 (F1), Dallas_74 (J), DeadP_82 (F1), DeadP_86 (F1), Deb65_75 (F1), DirtMcgirt_80 (F1), DmpstrDiver_75 (J), Donkeykong_86 (F1), Donkeykong_88 (F1), DotProduct_76 (F1), Drago_78 (F1), Duke13_80 (J), Eish_84 (F1), Eish_88 (F1), Ejimix_75 (J), Enby_82 (F1), EricMillard_74 (J), Estave1_93 (F1), Fancypants_89 (F1), Filuzino_82 (F1), Flathead_81 (F1), Florinda_94 (F1), Fruitloop_78 (F1), Galactic_80 (F1), Geralt_75 (F1), Girafales_91 (F1), Guppsters_76 (F1), Hades_80 (F1), Halley_77 (J), Hamulus_80 (F1), Hannaconda_70 (J), Harley_80 (F1), Hlubikazi_76 (F1), Hlubikazi_80 (F1), HokkenD_68 (J), Hughesyang_74 (J), Huphlepuuff_10 (S), IHOP_42 (E), Inca_41 (E), IrishSherpFalk_81 (F1), JC27_64 (A1), Jabbawokkie_91 (F2), James_82 (F1), Jarcob_81 (F1), Jinglebell_86 (F1), Job42_81 (F1), Job42_84 (F1), JoeyJr_82 (F1), JoieB_10 (S), JuicyJay_74 (J), Kalah2_70 (J), Karhdo_80 (F1), Kersh_83 (F1), Kingsley_85 (F1), Klein_73 (J), Koella_76 (F1), Krakatau_77 (F1), KristaRAM_79 (F1), Kumao_59 (singleton), Latretium_82 (F1), Leozinho_79 (F1), Leperchaun_80 (F1), LilMoolah_82 (F1), Lilbit_10 (S), LittleE_74 (J), LittleE_77 (J), LittleLaf_9 (S), Llama_88 (F1), Llij_77 (F1), Llij_80 (F1), Lorde_81 (F1), LunaBlu_84 (F1), MadMen_79 (F1), MadMen_87 (F1), Manda_43 (E), Mandlovu_76 (F1), Mandlovu_80 (F1), Marker_93 (F1), Marshmallow_43 (E), Marvin_8 (S), MiaZeal_76 (J), MilanaBonita_77 (F1), MilleniumForce_82 (F1), Minerva_79 (J), MinionDave_77 (F1), Minnie_77 (F1), Modragons_86 (F1), MooMoo_80 (singleton), Mova_80 (F1), Mozy_88 (F1), Ms6_82 (F1), Myrale_44 (E), NihilNomen_76 (J), Nimbo_74 (F1), Nivrat_80 (F1), NormanBulbieJr_82 (F1), Ochi17_87 (F1), Odette_74 (J), OfUltron_89 (F1), Ogopogo_87 (F1), OldBen_79 (F1), OlympiaSaint_81 (F1), Omega_77 (J), Omega_79 (J), PHappiness_82 (F1), PMC_78 (F1), Pacc40_73 (F1), Pepe_59 (A1), Phaja_42 (E), Phalconet_78 (F1), Phalconet_82 (F1), Phanphagia_80 (F1), Phatniss_78 (F1), PhesterPhotato_84 (F1), Philus_84 (F1), Phoebus_78 (J), Pippy_76 (F1), Poise_9 (S), PopTart_73 (F1), PopTart_77 (F1), Porcelain_75 (J), Pound_77 (J), Pringar_9 (S), Priscilla_84 (F1), Quico_91 (F1), Rabinovish_14 (C1), Radiance_80 (F1), Raela_9 (S), RitaG_82 (F1), Rita_88 (F1), Rockne_82 (F1), Royals2015_90 (F1), SG4_81 (F1), Sabbb_83 (F1), Sandalphon_75 (F1), Sarma624_80 (F1), SassyB_73 (F1), SassyB_77 (F1), Schatzie_70 (J),

Sebastian_89 (F1), ShamWow_44 (E), Shauna1_81 (F1), Soul22_82 (F2), Soul22_84 (F2), Spartacus_87 (F1), Spartacus_89 (F1), Squint_76 (J), Squirty_81 (F3), StAnnes_83 (F1), StellaBean_42 (E), Strokeseat_76 (F1), Strokeseat_80 (F1), Superphikiman_73 (J), Taj_88 (F1), Taj_92 (F1), Tesla_9 (S), ThetaBob_85 (F4), ThreeRngTarjay_73 (J), Toto_43 (E), Tuco_45 (E), Tweety_82 (F1), Tweety_86 (F1), UncleRicky_80 (F1), VRedHorse_80 (F1), VRedHorse_86 (F1), Wachhund_81 (F1), Wanda_77 (J), Wee_87 (F1), Wee_91 (F1), Whatsapiecost_74 (F1), WillSterrel_80 (F1), XFactor_77 (F1), Yeet_71 (J), Zapner_90 (F2), Zelink_73 (J), Zerg_82 (F1),

Start 26:

- Found in 2 of 226 (0.9%) of genes in pham
- Manual Annotations of this start: 2 of 213
- Called 100.0% of time when present
- Phage (with cluster) where this start called: Gandalph_79 (F1), Kenuha5_77 (F1),

Start 28:

- Found in 195 of 226 (86.3%) of genes in pham
- Manual Annotations of this start: 4 of 213
- Called 2.6% of time when present
- Phage (with cluster) where this start called: Bobby_70 (J), ByChance_73 (F1), Lucky2013_73 (J), Redno2_72 (J), ShowerHandel_80 (F1),

Summary by clusters:

There are 12 clusters represented in this pham: F1, singleton, F3, E, F5, F, J, F2, A1, S, F4, C1,

Info for manual annotations of cluster A1:

- Start number 18 was manually annotated 2 times for cluster A1.
- Start number 25 was manually annotated 3 times for cluster A1.

Info for manual annotations of cluster C1:

- Start number 25 was manually annotated 1 time for cluster C1.

Info for manual annotations of cluster E:

- Start number 25 was manually annotated 11 times for cluster E.

Info for manual annotations of cluster F1:

- Start number 16 was manually annotated 1 time for cluster F1.
- Start number 18 was manually annotated 1 time for cluster F1.
- Start number 21 was manually annotated 1 time for cluster F1.
- Start number 25 was manually annotated 132 times for cluster F1.
- Start number 26 was manually annotated 2 times for cluster F1.
- Start number 28 was manually annotated 1 time for cluster F1.

Info for manual annotations of cluster F2:

- Start number 25 was manually annotated 5 times for cluster F2.

Info for manual annotations of cluster F3:

- Start number 25 was manually annotated 1 time for cluster F3.

Info for manual annotations of cluster F4:

- Start number 25 was manually annotated 1 time for cluster F4.

Info for manual annotations of cluster F5:

- Start number 25 was manually annotated 1 time for cluster F5.

Info for manual annotations of cluster J:

- Start number 25 was manually annotated 33 times for cluster J.
- Start number 28 was manually annotated 3 times for cluster J.

Info for manual annotations of cluster S:

- Start number 25 was manually annotated 12 times for cluster S.

Gene Information:

Gene: ABCat_42 Start: 36113, Stop: 35817, Start Num: 25

Candidate Starts for ABCat_42:

(Start: 25 @36113 has 202 MA's), (30, 36077), (32, 36059), (38, 36026), (43, 35984), (56, 35837),

Gene: Akhila_78 Start: 48008, Stop: 48292, Start Num: 25

Candidate Starts for Akhila_78:

(Start: 25 @48008 has 202 MA's), (Start: 28 @48032 has 4 MA's), (42, 48107), (52, 48236), (56, 48272),

Gene: Ardmore_67 Start: 43684, Stop: 43968, Start Num: 25

Candidate Starts for Ardmore_67:

(Start: 25 @43684 has 202 MA's), (Start: 28 @43708 has 4 MA's), (42, 43783), (52, 43912), (56, 43948),

Gene: Ariel_75 Start: 47349, Stop: 47065, Start Num: 25

Candidate Starts for Ariel_75:

(Start: 25 @47349 has 202 MA's), (Start: 28 @47325 has 4 MA's), (42, 47250), (52, 47121), (56, 47085),

Gene: Ashballer_64 Start: 41640, Stop: 41353, Start Num: 25

Candidate Starts for Ashballer_64:

(Start: 18 @41670 has 3 MA's), (Start: 25 @41640 has 202 MA's), (Start: 28 @41616 has 4 MA's), (56, 41376),

Gene: Aubs_82 Start: 49731, Stop: 50015, Start Num: 25

Candidate Starts for Aubs_82:

(19, 49695), (Start: 25 @49731 has 202 MA's), (Start: 28 @49755 has 4 MA's), (52, 49959), (56, 49995),

Gene: Avani_90 Start: 47333, Stop: 47617, Start Num: 25

Candidate Starts for Avani_90:

(Start: 25 @47333 has 202 MA's), (Start: 28 @47357 has 4 MA's), (42, 47432), (52, 47561), (56, 47597),

Gene: BAKA_82 Start: 52624, Stop: 52340, Start Num: 25

Candidate Starts for BAKA_82:

(Start: 21 @52648 has 1 MA's), (Start: 25 @52624 has 202 MA's), (Start: 28 @52600 has 4 MA's), (42, 52525), (52, 52396), (56, 52360),

Gene: Batiatus_81 Start: 49093, Stop: 49377, Start Num: 25

Candidate Starts for Batiatus_81:

(Start: 25 @49093 has 202 MA's), (Start: 28 @49117 has 4 MA's), (42, 49192), (52, 49321), (56, 49357),

Gene: Batiatus_83 Start: 49708, Stop: 50034, Start Num: 25

Candidate Starts for Batiatus_83:

(10, 49603), (Start: 25 @49708 has 202 MA's), (29, 49741), (30, 49744), (33, 49771), (35, 49777), (48, 49897), (55, 50011),

Gene: Beelzebub_12 Start: 3476, Stop: 3760, Start Num: 25

Candidate Starts for Beelzebub_12:

(Start: 21 @3452 has 1 MA's), (Start: 25 @3476 has 202 MA's), (Start: 28 @3500 has 4 MA's), (42, 3575), (52, 3704), (56, 3740),

Gene: Beem_75 Start: 51626, Stop: 51342, Start Num: 25

Candidate Starts for Beem_75:

(Start: 25 @51626 has 202 MA's), (Start: 28 @51602 has 4 MA's), (42, 51527), (52, 51398), (56, 51362),

Gene: BigPhil_74 Start: 44927, Stop: 45211, Start Num: 25

Candidate Starts for BigPhil_74:

(Start: 21 @44903 has 1 MA's), (Start: 25 @44927 has 202 MA's), (Start: 28 @44951 has 4 MA's), (42, 45026), (52, 45155), (56, 45191),

Gene: BilboSwaggins_43 Start: 36121, Stop: 35825, Start Num: 25

Candidate Starts for BilboSwaggins_43:

(Start: 25 @36121 has 202 MA's), (30, 36085), (32, 36067), (38, 36034), (43, 35992), (56, 35845),

Gene: Bipolar_84 Start: 50621, Stop: 50905, Start Num: 25

Candidate Starts for Bipolar_84:

(19, 50585), (Start: 25 @50621 has 202 MA's), (Start: 28 @50645 has 4 MA's), (42, 50720), (52, 50849), (56, 50885),

Gene: Blackbeetle_9 Start: 2787, Stop: 3071, Start Num: 25

Candidate Starts for Blackbeetle_9:

(Start: 25 @2787 has 202 MA's), (Start: 28 @2811 has 4 MA's), (42, 2886), (52, 3015), (56, 3051),

Gene: Blarby_91 Start: 47885, Stop: 48169, Start Num: 25

Candidate Starts for Blarby_91:

(Start: 25 @47885 has 202 MA's), (Start: 28 @47909 has 4 MA's), (52, 48113), (56, 48149),

Gene: Blexus_76 Start: 48851, Stop: 49147, Start Num: 25

Candidate Starts for Blexus_76:

(Start: 25 @48851 has 202 MA's), (30, 48887), (32, 48905), (38, 48938), (43, 48980), (52, 49091), (56, 49127),

Gene: Blexus_80 Start: 49926, Stop: 50210, Start Num: 25

Candidate Starts for Blexus_80:

(Start: 25 @49926 has 202 MA's), (Start: 28 @49950 has 4 MA's), (31, 49959), (45, 50058), (48, 50073), (55, 50187),

Gene: Bobby_70 Start: 49641, Stop: 49345, Start Num: 28

Candidate Starts for Bobby_70:

(Start: 21 @49689 has 1 MA's), (Start: 25 @49665 has 202 MA's), (Start: 28 @49641 has 4 MA's), (42, 49566), (52, 49437), (56, 49401),

Gene: Boomer_85 Start: 49678, Stop: 49962, Start Num: 25

Candidate Starts for Boomer_85:

(Start: 25 @49678 has 202 MA's), (Start: 28 @49702 has 4 MA's), (42, 49777), (52, 49906), (56, 49942),

Gene: Bubbles123_76 Start: 48608, Stop: 48892, Start Num: 25

Candidate Starts for Bubbles123_76:

(Start: 18 @48578 has 3 MA's), (Start: 21 @48584 has 1 MA's), (Start: 25 @48608 has 202 MA's), (Start: 28 @48632 has 4 MA's), (42, 48707), (52, 48836), (56, 48872),

Gene: Burwell21_76 Start: 48586, Stop: 48870, Start Num: 25

Candidate Starts for Burwell21_76:

(Start: 25 @48586 has 202 MA's), (Start: 28 @48610 has 4 MA's), (42, 48685), (52, 48814), (56, 48850),

Gene: BuzzLyseyear_92 Start: 52666, Stop: 52950, Start Num: 25

Candidate Starts for BuzzLyseyear_92:

(Start: 25 @52666 has 202 MA's), (Start: 28 @52690 has 4 MA's), (31, 52699), (45, 52798), (48, 52813), (55, 52927),

Gene: ByChance_73 Start: 44779, Stop: 45045, Start Num: 28

Candidate Starts for ByChance_73:

(Start: 28 @44779 has 4 MA's), (32, 44806), (36, 44821), (48, 44911), (52, 44989), (56, 45025),

Gene: Byougenkin_82 Start: 47350, Stop: 47634, Start Num: 25

Candidate Starts for Byougenkin_82:

(Start: 25 @47350 has 202 MA's), (Start: 28 @47374 has 4 MA's), (31, 47383), (45, 47482), (48, 47497), (55, 47611),

Gene: CaptainTrips_81 Start: 48491, Stop: 48775, Start Num: 25

Candidate Starts for CaptainTrips_81:

(Start: 25 @48491 has 202 MA's), (Start: 28 @48515 has 4 MA's), (52, 48719), (56, 48755),

Gene: Cerasum_75 Start: 44945, Stop: 45229, Start Num: 25

Candidate Starts for Cerasum_75:

(Start: 21 @44921 has 1 MA's), (Start: 25 @44945 has 202 MA's), (Start: 28 @44969 has 4 MA's), (42, 45044), (52, 45173), (56, 45209),

Gene: Che8_86 Start: 49874, Stop: 50158, Start Num: 25

Candidate Starts for Che8_86:

(10, 49778), (13, 49802), (Start: 25 @49874 has 202 MA's), (Start: 28 @49898 has 4 MA's), (52, 50102), (56, 50138),

Gene: Clarkson_10 Start: 3252, Stop: 3536, Start Num: 25

Candidate Starts for Clarkson_10:

(Start: 21 @3228 has 1 MA's), (Start: 25 @3252 has 202 MA's), (Start: 28 @3276 has 4 MA's), (42, 3351), (52, 3480), (56, 3516),

Gene: Clifton_74 Start: 47402, Stop: 47686, Start Num: 25

Candidate Starts for Clifton_74:

(Start: 25 @47402 has 202 MA's), (Start: 28 @47426 has 4 MA's), (42, 47501), (52, 47630), (56, 47666),

Gene: Coco12_78 Start: 49002, Stop: 49286, Start Num: 25

Candidate Starts for Coco12_78:

(Start: 21 @48978 has 1 MA's), (Start: 25 @49002 has 202 MA's), (Start: 28 @49026 has 4 MA's), (42, 49101), (52, 49230), (56, 49266),

Gene: Corazon_9 Start: 3205, Stop: 3489, Start Num: 25

Candidate Starts for Corazon_9:

(Start: 21 @3181 has 1 MA's), (Start: 25 @3205 has 202 MA's), (Start: 28 @3229 has 4 MA's), (42, 3304), (52, 3433), (56, 3469),

Gene: Cornie_78 Start: 47540, Stop: 47824, Start Num: 25

Candidate Starts for Cornie_78:

(Start: 25 @47540 has 202 MA's), (Start: 28 @47564 has 4 MA's), (52, 47768), (56, 47804),

Gene: Cornucopia_85 Start: 48642, Stop: 48905, Start Num: 25

Candidate Starts for Cornucopia_85:

(Start: 25 @48642 has 202 MA's), (Start: 28 @48666 has 4 MA's), (31, 48675), (48, 48789), (53, 48864),

Gene: Cornucopia_81 Start: 47550, Stop: 47819, Start Num: 25

Candidate Starts for Cornucopia_81:

(Start: 25 @47550 has 202 MA's), (27, 47571), (44, 47670), (45, 47676), (55, 47796),

Gene: Courthouse_72 Start: 46987, Stop: 46703, Start Num: 25

Candidate Starts for Courthouse_72:

(Start: 25 @46987 has 202 MA's), (Start: 28 @46963 has 4 MA's), (52, 46759), (56, 46723),

Gene: CrystalP_44 Start: 36121, Stop: 35825, Start Num: 25

Candidate Starts for CrystalP_44:

(Start: 25 @36121 has 202 MA's), (30, 36085), (32, 36067), (38, 36034), (43, 35992), (56, 35845),

Gene: DLane_83 Start: 50315, Stop: 50599, Start Num: 25

Candidate Starts for DLane_83:

(Start: 25 @50315 has 202 MA's), (Start: 28 @50339 has 4 MA's), (42, 50414), (56, 50579),

Gene: DRBy19_85 Start: 51131, Stop: 51415, Start Num: 25

Candidate Starts for DRBy19_85:

(Start: 25 @51131 has 202 MA's), (Start: 28 @51155 has 4 MA's), (42, 51230), (52, 51359), (56, 51395),

Gene: Daenerys_81 Start: 50626, Stop: 50910, Start Num: 25

Candidate Starts for Daenerys_81:

(Start: 25 @50626 has 202 MA's), (Start: 28 @50650 has 4 MA's), (42, 50725), (52, 50854), (56, 50890),

Gene: Dallas_74 Start: 50547, Stop: 50263, Start Num: 25

Candidate Starts for Dallas_74:

(Start: 25 @50547 has 202 MA's), (Start: 28 @50523 has 4 MA's), (42, 50448), (52, 50319), (56, 50283),

Gene: DeadP_82 Start: 48110, Stop: 48394, Start Num: 25

Candidate Starts for DeadP_82:

(4, 47948), (Start: 25 @48110 has 202 MA's), (Start: 28 @48134 has 4 MA's), (42, 48209), (52, 48338), (56, 48374),

Gene: DeadP_86 Start: 49174, Stop: 49458, Start Num: 25

Candidate Starts for DeadP_86:

(Start: 25 @49174 has 202 MA's), (Start: 28 @49198 has 4 MA's), (31, 49207), (45, 49306), (48, 49321), (55, 49435),

Gene: Deb65_75 Start: 48348, Stop: 48632, Start Num: 25

Candidate Starts for Deb65_75:

(Start: 25 @48348 has 202 MA's), (Start: 28 @48372 has 4 MA's), (42, 48447), (52, 48576), (56, 48612),

Gene: DirtMcgirt_80 Start: 46288, Stop: 46572, Start Num: 25

Candidate Starts for DirtMcgirt_80:

(Start: 25 @46288 has 202 MA's), (Start: 28 @46312 has 4 MA's), (42, 46387), (52, 46516), (56, 46552),

Gene: DmpstrDiver_75 Start: 50974, Stop: 50690, Start Num: 25

Candidate Starts for DmpstrDiver_75:

(Start: 25 @50974 has 202 MA's), (Start: 28 @50950 has 4 MA's), (42, 50875), (52, 50746), (56, 50710),

Gene: Donkeykong_88 Start: 51342, Stop: 51620, Start Num: 25

Candidate Starts for Donkeykong_88:

(Start: 25 @51342 has 202 MA's), (Start: 28 @51366 has 4 MA's), (31, 51375), (37, 51408), (39, 51420), (40, 51423), (45, 51471), (48, 51486), (52, 51564), (56, 51600),

Gene: Donkeykong_86 Start: 50724, Stop: 51008, Start Num: 25

Candidate Starts for Donkeykong_86:

(4, 50562), (Start: 25 @50724 has 202 MA's), (Start: 28 @50748 has 4 MA's), (42, 50823), (52, 50952), (56, 50988),

Gene: DotProduct_76 Start: 47105, Stop: 47389, Start Num: 25

Candidate Starts for DotProduct_76:

(Start: 25 @47105 has 202 MA's), (Start: 28 @47129 has 4 MA's), (42, 47204), (52, 47333), (56, 47369),

Gene: Drago_78 Start: 46291, Stop: 46575, Start Num: 25

Candidate Starts for Drago_78:

(Start: 25 @46291 has 202 MA's), (Start: 28 @46315 has 4 MA's), (42, 46390), (52, 46519), (56, 46555),

Gene: Duke13_80 Start: 51836, Stop: 51552, Start Num: 25

Candidate Starts for Duke13_80:

(Start: 21 @51860 has 1 MA's), (Start: 25 @51836 has 202 MA's), (Start: 28 @51812 has 4 MA's), (42, 51737), (52, 51608), (56, 51572),

Gene: Eish_88 Start: 51057, Stop: 51341, Start Num: 25

Candidate Starts for Eish_88:

(Start: 25 @51057 has 202 MA's), (Start: 28 @51081 has 4 MA's), (31, 51090), (45, 51189), (48, 51204), (55, 51318),

Gene: Eish_84 Start: 49994, Stop: 50278, Start Num: 25

Candidate Starts for Eish_84:

(Start: 25 @49994 has 202 MA's), (Start: 28 @50018 has 4 MA's), (42, 50093), (52, 50222), (56, 50258),

Gene: Ejimix_75 Start: 52415, Stop: 52131, Start Num: 25

Candidate Starts for Ejimix_75:

(Start: 25 @52415 has 202 MA's), (Start: 28 @52391 has 4 MA's), (42, 52316), (52, 52187), (56, 52151),

Gene: Enby_82 Start: 46567, Stop: 46851, Start Num: 25

Candidate Starts for Enby_82:

(Start: 25 @46567 has 202 MA's), (Start: 28 @46591 has 4 MA's), (42, 46666), (52, 46795), (56, 46831),

Gene: EricMillard_74 Start: 51619, Stop: 51335, Start Num: 25

Candidate Starts for EricMillard_74:

(Start: 25 @51619 has 202 MA's), (Start: 28 @51595 has 4 MA's), (42, 51520), (52, 51391), (56, 51355),

Gene: Estave1_93 Start: 53691, Stop: 53975, Start Num: 25

Candidate Starts for Estave1_93:

(24, 53676), (Start: 25 @53691 has 202 MA's), (Start: 28 @53715 has 4 MA's), (42, 53790), (52, 53919), (56, 53955),

Gene: Fancypants_89 Start: 51307, Stop: 51630, Start Num: 25

Candidate Starts for Fancypants_89:

(7, 51169), (Start: 25 @51307 has 202 MA's), (27, 51328), (30, 51343), (41, 51412), (44, 51469), (47, 51484), (48, 51493), (49, 51499), (55, 51607),

Gene: Filuzino_82 Start: 50908, Stop: 51192, Start Num: 25

Candidate Starts for Filuzino_82:

(Start: 25 @50908 has 202 MA's), (Start: 28 @50932 has 4 MA's), (42, 51007), (52, 51136), (56, 51172),

Gene: Flathead_81 Start: 48740, Stop: 49024, Start Num: 25

Candidate Starts for Flathead_81:

(Start: 25 @48740 has 202 MA's), (Start: 28 @48764 has 4 MA's), (42, 48839), (52, 48968), (56, 49004),

Gene: Florinda_94 Start: 51591, Stop: 51875, Start Num: 25

Candidate Starts for Florinda_94:

(Start: 25 @51591 has 202 MA's), (Start: 28 @51615 has 4 MA's), (31, 51624), (45, 51723), (48, 51738), (55, 51852),

Gene: Fruitloop_78 Start: 48745, Stop: 49029, Start Num: 25

Candidate Starts for Fruitloop_78:

(22, 48718), (Start: 25 @48745 has 202 MA's), (Start: 28 @48769 has 4 MA's), (42, 48844), (52, 48973), (56, 49009),

Gene: Galactic_80 Start: 48440, Stop: 48724, Start Num: 25

Candidate Starts for Galactic_80:

(14, 48380), (Start: 25 @48440 has 202 MA's), (Start: 28 @48464 has 4 MA's), (42, 48539), (52, 48668), (56, 48704),

Gene: Gandalph_79 Start: 46011, Stop: 46295, Start Num: 26

Candidate Starts for Gandalph_79:

(Start: 26 @46011 has 2 MA's), (Start: 28 @46035 has 4 MA's), (42, 46110), (52, 46239), (56, 46275),

Gene: Geralt_75 Start: 48346, Stop: 48630, Start Num: 25

Candidate Starts for Geralt_75:

(Start: 25 @48346 has 202 MA's), (Start: 28 @48370 has 4 MA's), (42, 48445), (52, 48574), (56, 48610),

Gene: Girafales_91 Start: 51196, Stop: 51480, Start Num: 25

Candidate Starts for Girafales_91:

(Start: 25 @51196 has 202 MA's), (Start: 28 @51220 has 4 MA's), (31, 51229), (45, 51328), (48, 51343), (55, 51457),

Gene: Guppsters_76 Start: 46731, Stop: 47015, Start Num: 25

Candidate Starts for Guppsters_76:

(Start: 21 @46707 has 1 MA's), (Start: 25 @46731 has 202 MA's), (Start: 28 @46755 has 4 MA's), (42, 46830), (52, 46959), (56, 46995),

Gene: Hades_80 Start: 46896, Stop: 47180, Start Num: 25

Candidate Starts for Hades_80:

(Start: 25 @46896 has 202 MA's), (Start: 28 @46920 has 4 MA's), (42, 46995), (52, 47124),

Gene: Halley_77 Start: 51626, Stop: 51342, Start Num: 25

Candidate Starts for Halley_77:

(Start: 25 @51626 has 202 MA's), (Start: 28 @51602 has 4 MA's), (42, 51527), (52, 51398), (56, 51362),

Gene: Hamulus_80 Start: 48587, Stop: 48871, Start Num: 25

Candidate Starts for Hamulus_80:

(Start: 25 @48587 has 202 MA's), (Start: 28 @48611 has 4 MA's), (42, 48686), (52, 48815), (56, 48851),

Gene: Hannaconda_70 Start: 46036, Stop: 45752, Start Num: 25

Candidate Starts for Hannaconda_70:

(Start: 25 @46036 has 202 MA's), (Start: 28 @46012 has 4 MA's), (52, 45808), (56, 45772),

Gene: Harley_80 Start: 48340, Stop: 48624, Start Num: 25

Candidate Starts for Harley_80:

(Start: 25 @48340 has 202 MA's), (Start: 28 @48364 has 4 MA's), (42, 48439), (52, 48568), (56, 48604),

Gene: Hlubikazi_80 Start: 47314, Stop: 47595, Start Num: 25

Candidate Starts for Hlubikazi_80:

(Start: 25 @47314 has 202 MA's), (Start: 28 @47338 has 4 MA's), (31, 47347), (48, 47461), (51, 47533), (52, 47539),

Gene: Hlubikazi_76 Start: 46227, Stop: 46511, Start Num: 25

Candidate Starts for Hlubikazi_76:

(Start: 21 @46203 has 1 MA's), (Start: 25 @46227 has 202 MA's), (Start: 28 @46251 has 4 MA's), (42, 46326), (52, 46455), (56, 46491),

Gene: HokkenD_68 Start: 49895, Stop: 49611, Start Num: 25

Candidate Starts for HokkenD_68:

(Start: 25 @49895 has 202 MA's), (Start: 28 @49871 has 4 MA's), (42, 49796), (52, 49667), (56, 49631),

Gene: Hughesyang_74 Start: 51585, Stop: 51301, Start Num: 25

Candidate Starts for Hughesyang_74:

(Start: 25 @51585 has 202 MA's), (Start: 28 @51561 has 4 MA's), (42, 51486), (52, 51357), (56, 51321),

Gene: Huphlepuuff_10 Start: 2982, Stop: 3266, Start Num: 25

Candidate Starts for Huphlepuuff_10:

(Start: 21 @2958 has 1 MA's), (Start: 25 @2982 has 202 MA's), (Start: 28 @3006 has 4 MA's), (42, 3081), (52, 3210), (56, 3246),

Gene: IHOP_42 Start: 35685, Stop: 35389, Start Num: 25

Candidate Starts for IHOP_42:

(Start: 25 @35685 has 202 MA's), (30, 35649), (32, 35631), (38, 35598), (43, 35556), (56, 35409),

Gene: lbhubesi_80 Start: 47022, Stop: 47336, Start Num: 18

Candidate Starts for lbhubesi_80:

(Start: 18 @47022 has 3 MA's), (Start: 21 @47028 has 1 MA's), (Start: 25 @47052 has 202 MA's), (Start: 28 @47076 has 4 MA's), (51, 47274), (52, 47280), (56, 47316),

Gene: Inca_41 Start: 34210, Stop: 33914, Start Num: 25

Candidate Starts for Inca_41:

(Start: 25 @34210 has 202 MA's), (30, 34174), (32, 34156), (38, 34123), (43, 34081), (56, 33934),

Gene: IrishSherpFalk_81 Start: 49331, Stop: 49615, Start Num: 25

Candidate Starts for IrishSherpFalk_81:

(Start: 18 @49301 has 3 MA's), (Start: 21 @49307 has 1 MA's), (Start: 25 @49331 has 202 MA's), (Start: 28 @49355 has 4 MA's), (42, 49430), (52, 49559), (56, 49595),

Gene: JC27_64 Start: 41329, Stop: 41042, Start Num: 25

Candidate Starts for JC27_64:

(Start: 18 @41359 has 3 MA's), (Start: 25 @41329 has 202 MA's), (Start: 28 @41305 has 4 MA's), (56, 41065),

Gene: Jabbawokkie_91 Start: 47805, Stop: 48089, Start Num: 25

Candidate Starts for Jabbawokkie_91:

(Start: 25 @47805 has 202 MA's), (Start: 28 @47829 has 4 MA's), (52, 48033), (56, 48069),

Gene: James_82 Start: 50466, Stop: 50750, Start Num: 25

Candidate Starts for James_82:

(Start: 25 @50466 has 202 MA's), (Start: 28 @50490 has 4 MA's), (42, 50565), (52, 50694), (56, 50730),

Gene: Jarcob_81 Start: 50063, Stop: 50347, Start Num: 25

Candidate Starts for Jarcob_81:

(Start: 25 @50063 has 202 MA's), (Start: 28 @50087 has 4 MA's), (42, 50162), (52, 50291), (56, 50327),

Gene: Jinglebell_86 Start: 49768, Stop: 50088, Start Num: 25

Candidate Starts for Jinglebell_86:

(Start: 21 @49744 has 1 MA's), (Start: 25 @49768 has 202 MA's), (Start: 28 @49792 has 4 MA's), (42, 49867), (52, 49996), (56, 50032),

Gene: Job42_84 Start: 52418, Stop: 52702, Start Num: 25

Candidate Starts for Job42_84:

(Start: 25 @52418 has 202 MA's), (Start: 28 @52442 has 4 MA's), (31, 52451), (45, 52550), (48, 52565), (55, 52679),

Gene: Job42_81 Start: 51522, Stop: 51818, Start Num: 25

Candidate Starts for Job42_81:

(Start: 25 @51522 has 202 MA's), (27, 51543), (30, 51558), (48, 51684), (52, 51762), (56, 51798),

Gene: JoeyJr_82 Start: 50251, Stop: 50535, Start Num: 25

Candidate Starts for JoeyJr_82:

(Start: 25 @50251 has 202 MA's), (Start: 28 @50275 has 4 MA's), (42, 50350), (52, 50479), (56, 50515),

Gene: JoieB_10 Start: 3201, Stop: 3485, Start Num: 25

Candidate Starts for JoieB_10:

(Start: 21 @3177 has 1 MA's), (Start: 25 @3201 has 202 MA's), (Start: 28 @3225 has 4 MA's), (42, 3300), (52, 3429), (56, 3465),

Gene: JuicyJay_74 Start: 52760, Stop: 52476, Start Num: 25

Candidate Starts for JuicyJay_74:

(Start: 25 @52760 has 202 MA's), (Start: 28 @52736 has 4 MA's), (42, 52661), (52, 52532), (56, 52496),

Gene: Kalah2_70 Start: 50919, Stop: 50635, Start Num: 25

Candidate Starts for Kalah2_70:

(Start: 25 @50919 has 202 MA's), (Start: 28 @50895 has 4 MA's), (42, 50820), (52, 50691), (56, 50655),

Gene: Karhdo_80 Start: 47607, Stop: 47906, Start Num: 25

Candidate Starts for Karhdo_80:

(Start: 25 @47607 has 202 MA's), (27, 47628), (30, 47643), (46, 47769), (55, 47883),

Gene: Kenuha5_77 Start: 49369, Stop: 49653, Start Num: 26

Candidate Starts for Kenuha5_77:

(Start: 26 @49369 has 2 MA's), (Start: 28 @49393 has 4 MA's), (42, 49468), (52, 49597), (56, 49633),

Gene: Kersh_83 Start: 50793, Stop: 51092, Start Num: 25

Candidate Starts for Kersh_83:

(Start: 25 @50793 has 202 MA's), (27, 50814), (30, 50829), (46, 50955), (55, 51069),

Gene: Kingsley_85 Start: 51609, Stop: 51893, Start Num: 25

Candidate Starts for Kingsley_85:

(Start: 25 @51609 has 202 MA's), (Start: 28 @51633 has 4 MA's), (52, 51837), (56, 51873),

Gene: Klein_73 Start: 50165, Stop: 49884, Start Num: 25

Candidate Starts for Klein_73:

(Start: 25 @50165 has 202 MA's), (Start: 28 @50144 has 4 MA's), (34, 50111), (52, 49940), (56, 49904),

Gene: Koella_76 Start: 46177, Stop: 46458, Start Num: 25

Candidate Starts for Koella_76:

(Start: 25 @46177 has 202 MA's), (Start: 28 @46198 has 4 MA's), (34, 46231), (52, 46402), (56, 46438),

Gene: Krakatau_77 Start: 45727, Stop: 46011, Start Num: 25

Candidate Starts for Krakatau_77:

(Start: 25 @45727 has 202 MA's), (Start: 28 @45751 has 4 MA's), (31, 45760), (45, 45859), (48, 45874), (55, 45988),

Gene: KristaRAM_79 Start: 47927, Stop: 48211, Start Num: 25

Candidate Starts for KristaRAM_79:

(Start: 25 @47927 has 202 MA's), (Start: 28 @47951 has 4 MA's), (42, 48026), (52, 48155), (56, 48191),

Gene: Kumao_59 Start: 43007, Stop: 43291, Start Num: 25

Candidate Starts for Kumao_59:

(14, 42947), (Start: 25 @43007 has 202 MA's), (Start: 28 @43031 has 4 MA's), (42, 43106), (52, 43235), (56, 43271),

Gene: Latretium_82 Start: 48306, Stop: 48590, Start Num: 25

Candidate Starts for Latretium_82:

(Start: 25 @48306 has 202 MA's), (Start: 28 @48330 has 4 MA's), (42, 48405), (52, 48534), (56, 48570),

Gene: Leozinho_79 Start: 46485, Stop: 46781, Start Num: 25

Candidate Starts for Leozinho_79:

(Start: 25 @46485 has 202 MA's), (30, 46521), (32, 46539), (38, 46572), (43, 46614), (52, 46725), (56, 46761),

Gene: Leperchaun_80 Start: 49485, Stop: 49769, Start Num: 25

Candidate Starts for Leperchaun_80:

(Start: 25 @49485 has 202 MA's), (Start: 28 @49509 has 4 MA's), (42, 49584), (52, 49713), (56, 49749),

Gene: LilMoolah_82 Start: 49634, Stop: 49918, Start Num: 25

Candidate Starts for LilMoolah_82:

(5, 49496), (12, 49559), (Start: 25 @49634 has 202 MA's), (Start: 28 @49658 has 4 MA's), (42, 49733), (52, 49862), (56, 49898),

Gene: Lilbit_10 Start: 3253, Stop: 3537, Start Num: 25

Candidate Starts for Lilbit_10:

(Start: 21 @3229 has 1 MA's), (Start: 25 @3253 has 202 MA's), (Start: 28 @3277 has 4 MA's), (42, 3352), (52, 3481), (56, 3517),

Gene: LittleE_74 Start: 49484, Stop: 49203, Start Num: 25

Candidate Starts for LittleE_74:

(1, 49685), (2, 49673), (8, 49613), (9, 49601), (15, 49547), (Start: 25 @49484 has 202 MA's), (Start: 28 @49460 has 4 MA's), (31, 49451), (37, 49418), (39, 49406), (40, 49403), (45, 49355), (48, 49340), (55, 49226),

Gene: LittleE_77 Start: 50428, Stop: 50147, Start Num: 25

Candidate Starts for LittleE_77:

(Start: 25 @50428 has 202 MA's), (Start: 28 @50407 has 4 MA's), (42, 50332), (52, 50203), (56, 50167),

Gene: LittleLaf_9 Start: 2982, Stop: 3266, Start Num: 25

Candidate Starts for LittleLaf_9:

(Start: 21 @2958 has 1 MA's), (Start: 25 @2982 has 202 MA's), (Start: 28 @3006 has 4 MA's), (42, 3081), (52, 3210), (56, 3246),

Gene: Llama_88 Start: 49624, Stop: 49944, Start Num: 25

Candidate Starts for Llama_88:

(Start: 21 @49600 has 1 MA's), (Start: 25 @49624 has 202 MA's), (Start: 28 @49648 has 4 MA's), (42, 49723), (52, 49852), (56, 49888),

Gene: Llij_77 Start: 46445, Stop: 46729, Start Num: 25

Candidate Starts for Llij_77:

(Start: 25 @46445 has 202 MA's), (Start: 28 @46469 has 4 MA's), (42, 46544), (52, 46673), (56, 46709),

Gene: Llij_80 Start: 47508, Stop: 47834, Start Num: 25

Candidate Starts for Llij_80:

(Start: 25 @47508 has 202 MA's), (29, 47541), (30, 47544), (33, 47571), (35, 47577), (48, 47697), (55, 47811),

Gene: Lorde_81 Start: 45732, Stop: 46016, Start Num: 25

Candidate Starts for Lorde_81:

(Start: 25 @45732 has 202 MA's), (Start: 28 @45756 has 4 MA's), (42, 45831), (52, 45960), (56, 45996),

Gene: Lucky2013_73 Start: 47341, Stop: 47081, Start Num: 28

Candidate Starts for Lucky2013_73:

(Start: 25 @47365 has 202 MA's), (Start: 28 @47341 has 4 MA's), (42, 47266), (52, 47137), (56, 47101),

Gene: LunaBlu_84 Start: 49474, Stop: 49758, Start Num: 25

Candidate Starts for LunaBlu_84:

(Start: 25 @49474 has 202 MA's), (Start: 28 @49498 has 4 MA's), (42, 49573), (52, 49702), (56, 49738),

Gene: MadMen_87 Start: 49600, Stop: 49884, Start Num: 25

Candidate Starts for MadMen_87:

(14, 49540), (Start: 25 @49600 has 202 MA's), (Start: 28 @49624 has 4 MA's), (42, 49699), (52, 49828), (56, 49864),

Gene: MadMen_79 Start: 47451, Stop: 47750, Start Num: 25

Candidate Starts for MadMen_79:

(Start: 25 @47451 has 202 MA's), (27, 47472), (30, 47487), (46, 47613), (55, 47727),

Gene: Manda_43 Start: 35798, Stop: 35514, Start Num: 25

Candidate Starts for Manda_43:

(Start: 25 @35798 has 202 MA's), (Start: 28 @35774 has 4 MA's), (42, 35699), (52, 35570), (56, 35534),

Gene: Mandlovu_80 Start: 47256, Stop: 47537, Start Num: 25

Candidate Starts for Mandlovu_80:

(Start: 25 @47256 has 202 MA's), (Start: 28 @47280 has 4 MA's), (31, 47289), (48, 47403), (51, 47475), (52, 47481),

Gene: Mandlovu_76 Start: 46169, Stop: 46453, Start Num: 25

Candidate Starts for Mandlovu_76:

(Start: 21 @46145 has 1 MA's), (Start: 25 @46169 has 202 MA's), (Start: 28 @46193 has 4 MA's), (42, 46268), (52, 46397), (56, 46433),

Gene: Marker_93 Start: 49400, Stop: 49684, Start Num: 25

Candidate Starts for Marker_93:

(Start: 25 @49400 has 202 MA's), (Start: 28 @49424 has 4 MA's), (42, 49499), (52, 49628), (56, 49664),

Gene: Marshmallow_43 Start: 36119, Stop: 35823, Start Num: 25

Candidate Starts for Marshmallow_43:

(Start: 25 @36119 has 202 MA's), (30, 36083), (32, 36065), (38, 36032), (43, 35990), (56, 35843),

Gene: Marvin_8 Start: 2964, Stop: 3248, Start Num: 25

Candidate Starts for Marvin_8:

(Start: 21 @2940 has 1 MA's), (Start: 25 @2964 has 202 MA's), (Start: 28 @2988 has 4 MA's), (42, 3063), (52, 3192), (56, 3228),

Gene: MiaZeal_76 Start: 48021, Stop: 47737, Start Num: 25

Candidate Starts for MiaZeal_76:

(Start: 25 @48021 has 202 MA's), (Start: 28 @47997 has 4 MA's), (42, 47922), (52, 47793), (56, 47757),

Gene: MilanaBonita_77 Start: 48008, Stop: 48292, Start Num: 25

Candidate Starts for MilanaBonita_77:

(Start: 25 @48008 has 202 MA's), (Start: 28 @48032 has 4 MA's), (42, 48107), (52, 48236), (56, 48272),

Gene: MilleniumForce_82 Start: 49757, Stop: 50041, Start Num: 25

Candidate Starts for MilleniumForce_82:

(Start: 25 @49757 has 202 MA's), (Start: 28 @49781 has 4 MA's), (42, 49856), (52, 49985), (56, 50021),

Gene: Minerva_79 Start: 52268, Stop: 51984, Start Num: 25

Candidate Starts for Minerva_79:

(Start: 21 @52292 has 1 MA's), (Start: 25 @52268 has 202 MA's), (Start: 28 @52244 has 4 MA's), (42, 52169), (52, 52040), (56, 52004),

Gene: MinionDave_77 Start: 48491, Stop: 48775, Start Num: 25

Candidate Starts for MinionDave_77:

(Start: 25 @48491 has 202 MA's), (Start: 28 @48515 has 4 MA's), (52, 48719), (56, 48755),

Gene: Minnie_77 Start: 50537, Stop: 50821, Start Num: 25

Candidate Starts for Minnie_77:

(Start: 18 @50507 has 3 MA's), (Start: 21 @50513 has 1 MA's), (Start: 25 @50537 has 202 MA's),
(Start: 28 @50561 has 4 MA's), (42, 50636), (52, 50765), (56, 50801),

Gene: Modragons_86 Start: 49612, Stop: 49932, Start Num: 25

Candidate Starts for Modragons_86:

(Start: 21 @49588 has 1 MA's), (Start: 25 @49612 has 202 MA's), (Start: 28 @49636 has 4 MA's),
(42, 49711), (52, 49840), (56, 49876),

Gene: MooMoo_80 Start: 48107, Stop: 48433, Start Num: 25

Candidate Starts for MooMoo_80:

(Start: 25 @48107 has 202 MA's), (29, 48140), (30, 48143), (33, 48170), (35, 48176), (48, 48296), (55,
48410),

Gene: Mova_80 Start: 47852, Stop: 48136, Start Num: 25

Candidate Starts for Mova_80:

(Start: 25 @47852 has 202 MA's), (Start: 28 @47876 has 4 MA's), (42, 47951), (52, 48080), (56,
48116),

Gene: Mozy_88 Start: 48337, Stop: 48621, Start Num: 25

Candidate Starts for Mozy_88:

(Start: 25 @48337 has 202 MA's), (Start: 28 @48361 has 4 MA's), (42, 48436), (52, 48565), (56,
48601),

Gene: MrGordo_63 Start: 41253, Stop: 40939, Start Num: 18

Candidate Starts for MrGordo_63:

(Start: 18 @41253 has 3 MA's), (Start: 21 @41247 has 1 MA's), (Start: 25 @41223 has 202 MA's),
(Start: 28 @41199 has 4 MA's), (52, 40995), (56, 40959),

Gene: Ms6_82 Start: 45701, Stop: 45985, Start Num: 25

Candidate Starts for Ms6_82:

(Start: 25 @45701 has 202 MA's), (Start: 28 @45725 has 4 MA's), (42, 45800), (52, 45929), (56,
45965),

Gene: Myrale_44 Start: 35984, Stop: 35688, Start Num: 25

Candidate Starts for Myrale_44:

(Start: 25 @35984 has 202 MA's), (30, 35948), (32, 35930), (38, 35897), (43, 35855), (56, 35708),

Gene: NihilNomen_76 Start: 51713, Stop: 51429, Start Num: 25

Candidate Starts for NihilNomen_76:

(Start: 25 @51713 has 202 MA's), (Start: 28 @51689 has 4 MA's), (42, 51614), (52, 51485), (56,
51449),

Gene: Nimbo_74 Start: 48349, Stop: 48633, Start Num: 25

Candidate Starts for Nimbo_74:

(Start: 25 @48349 has 202 MA's), (Start: 28 @48373 has 4 MA's), (42, 48448), (52, 48577), (56,
48613),

Gene: Nivrat_80 Start: 49507, Stop: 49791, Start Num: 25

Candidate Starts for Nivrat_80:

(5, 49369), (12, 49432), (Start: 25 @49507 has 202 MA's), (Start: 28 @49531 has 4 MA's), (42, 49606), (52, 49735), (56, 49771),

Gene: NormanBulbieJr_82 Start: 50191, Stop: 50472, Start Num: 25

Candidate Starts for NormanBulbieJr_82:

(Start: 25 @50191 has 202 MA's), (Start: 28 @50212 has 4 MA's), (34, 50245), (52, 50416), (56, 50452),

Gene: Ochi17_87 Start: 49219, Stop: 49539, Start Num: 25

Candidate Starts for Ochi17_87:

(Start: 21 @49195 has 1 MA's), (Start: 25 @49219 has 202 MA's), (Start: 28 @49243 has 4 MA's), (42, 49318), (52, 49447), (56, 49483),

Gene: Odette_74 Start: 50756, Stop: 50472, Start Num: 25

Candidate Starts for Odette_74:

(Start: 25 @50756 has 202 MA's), (Start: 28 @50732 has 4 MA's), (42, 50657), (52, 50528), (56, 50492),

Gene: OfUltron_89 Start: 49768, Stop: 50088, Start Num: 25

Candidate Starts for OfUltron_89:

(Start: 21 @49744 has 1 MA's), (Start: 25 @49768 has 202 MA's), (Start: 28 @49792 has 4 MA's), (42, 49867), (52, 49996), (56, 50032),

Gene: Ogopogo_87 Start: 48817, Stop: 49101, Start Num: 25

Candidate Starts for Ogopogo_87:

(Start: 25 @48817 has 202 MA's), (Start: 28 @48841 has 4 MA's), (42, 48916), (52, 49045), (56, 49081),

Gene: OldBen_79 Start: 49741, Stop: 50025, Start Num: 25

Candidate Starts for OldBen_79:

(Start: 25 @49741 has 202 MA's), (Start: 28 @49765 has 4 MA's), (42, 49840), (52, 49969), (56, 50005),

Gene: OlympiaSaint_81 Start: 49408, Stop: 49692, Start Num: 25

Candidate Starts for OlympiaSaint_81:

(Start: 25 @49408 has 202 MA's), (Start: 28 @49432 has 4 MA's), (42, 49507), (52, 49636), (56, 49672),

Gene: Omega_79 Start: 51648, Stop: 51367, Start Num: 25

Candidate Starts for Omega_79:

(Start: 25 @51648 has 202 MA's), (Start: 28 @51627 has 4 MA's), (42, 51552), (52, 51423), (56, 51387),

Gene: Omega_77 Start: 51219, Stop: 50938, Start Num: 25

Candidate Starts for Omega_77:

(Start: 25 @51219 has 202 MA's), (Start: 28 @51195 has 4 MA's), (31, 51186), (37, 51153), (39, 51141), (40, 51138), (48, 51075), (55, 50961),

Gene: PHappiness_82 Start: 50570, Stop: 50854, Start Num: 25

Candidate Starts for PHappiness_82:

(Start: 25 @50570 has 202 MA's), (Start: 28 @50594 has 4 MA's), (42, 50669), (52, 50798), (56, 50834),

Gene: PMC_78 Start: 47902, Stop: 48186, Start Num: 25

Candidate Starts for PMC_78:

(Start: 25 @47902 has 202 MA's), (Start: 28 @47926 has 4 MA's), (42, 48001), (52, 48130), (56, 48166),

Gene: Pacc40_73 Start: 48569, Stop: 48838, Start Num: 25

Candidate Starts for Pacc40_73:

(Start: 25 @48569 has 202 MA's), (27, 48590), (44, 48689), (45, 48695), (55, 48815),

Gene: Pepe_59 Start: 39848, Stop: 39564, Start Num: 25

Candidate Starts for Pepe_59:

(Start: 18 @39878 has 3 MA's), (Start: 21 @39872 has 1 MA's), (Start: 25 @39848 has 202 MA's), (Start: 28 @39824 has 4 MA's), (42, 39749), (52, 39620), (56, 39584),

Gene: Phaja_42 Start: 35684, Stop: 35388, Start Num: 25

Candidate Starts for Phaja_42:

(Start: 25 @35684 has 202 MA's), (30, 35648), (32, 35630), (38, 35597), (43, 35555), (56, 35408),

Gene: Phalconet_78 Start: 48031, Stop: 48315, Start Num: 25

Candidate Starts for Phalconet_78:

(Start: 25 @48031 has 202 MA's), (Start: 28 @48055 has 4 MA's), (52, 48259), (56, 48295),

Gene: Phalconet_82 Start: 49094, Stop: 49378, Start Num: 25

Candidate Starts for Phalconet_82:

(Start: 25 @49094 has 202 MA's), (Start: 28 @49118 has 4 MA's), (31, 49127), (45, 49226), (48, 49241), (55, 49355),

Gene: Phanphagia_80 Start: 49405, Stop: 49689, Start Num: 25

Candidate Starts for Phanphagia_80:

(Start: 25 @49405 has 202 MA's), (Start: 28 @49429 has 4 MA's), (42, 49504), (52, 49633), (56, 49669),

Gene: Phatniss_78 Start: 47540, Stop: 47824, Start Num: 25

Candidate Starts for Phatniss_78:

(Start: 25 @47540 has 202 MA's), (Start: 28 @47564 has 4 MA's), (42, 47639), (52, 47768), (56, 47804),

Gene: PhesterPhotato_84 Start: 49202, Stop: 49483, Start Num: 25

Candidate Starts for PhesterPhotato_84:

(Start: 25 @49202 has 202 MA's), (Start: 28 @49223 has 4 MA's), (42, 49298), (52, 49427), (56, 49463),

Gene: Philus_84 Start: 51107, Stop: 51391, Start Num: 25

Candidate Starts for Philus_84:

(Start: 25 @51107 has 202 MA's), (Start: 28 @51131 has 4 MA's), (42, 51206), (52, 51335), (56, 51371),

Gene: Phoebus_78 Start: 52895, Stop: 52611, Start Num: 25

Candidate Starts for Phoebus_78:

(Start: 25 @52895 has 202 MA's), (Start: 28 @52871 has 4 MA's), (42, 52796), (52, 52667), (56, 52631),

Gene: Pippy_76 Start: 47591, Stop: 47887, Start Num: 25

Candidate Starts for Pippy_76:

(Start: 25 @47591 has 202 MA's), (30, 47627), (32, 47645), (38, 47678), (43, 47720), (52, 47831), (56, 47867),

Gene: Poise_9 Start: 2787, Stop: 3071, Start Num: 25

Candidate Starts for Poise_9:

(Start: 25 @2787 has 202 MA's), (Start: 28 @2811 has 4 MA's), (42, 2886), (52, 3015), (56, 3051),

Gene: PopTart_77 Start: 47157, Stop: 47441, Start Num: 25

Candidate Starts for PopTart_77:

(Start: 25 @47157 has 202 MA's), (Start: 28 @47181 has 4 MA's), (31, 47190), (45, 47289), (48, 47304), (55, 47418),

Gene: PopTart_73 Start: 46094, Stop: 46378, Start Num: 25

Candidate Starts for PopTart_73:

(Start: 21 @46070 has 1 MA's), (Start: 25 @46094 has 202 MA's), (Start: 28 @46118 has 4 MA's), (42, 46193), (52, 46322), (56, 46358),

Gene: Porcelain_75 Start: 48021, Stop: 47737, Start Num: 25

Candidate Starts for Porcelain_75:

(Start: 25 @48021 has 202 MA's), (Start: 28 @47997 has 4 MA's), (42, 47922), (52, 47793), (56, 47757),

Gene: Pound_77 Start: 53540, Stop: 53256, Start Num: 25

Candidate Starts for Pound_77:

(Start: 21 @53564 has 1 MA's), (Start: 25 @53540 has 202 MA's), (Start: 28 @53516 has 4 MA's), (42, 53441), (52, 53312), (56, 53276),

Gene: Pringar_9 Start: 2807, Stop: 3091, Start Num: 25

Candidate Starts for Pringar_9:

(Start: 21 @2783 has 1 MA's), (Start: 25 @2807 has 202 MA's), (Start: 28 @2831 has 4 MA's), (42, 2906), (52, 3035), (56, 3071),

Gene: Priscilla_84 Start: 50289, Stop: 50570, Start Num: 25

Candidate Starts for Priscilla_84:

(Start: 25 @50289 has 202 MA's), (Start: 28 @50310 has 4 MA's), (34, 50343), (52, 50514), (56, 50550),

Gene: Quico_91 Start: 51411, Stop: 51695, Start Num: 25

Candidate Starts for Quico_91:

(Start: 25 @51411 has 202 MA's), (Start: 28 @51435 has 4 MA's), (31, 51444), (45, 51543), (48, 51558), (55, 51672),

Gene: Rabinovish_14 Start: 5789, Stop: 6034, Start Num: 25

Candidate Starts for Rabinovish_14:

(3, 5627), (Start: 25 @5789 has 202 MA's), (Start: 28 @5813 has 4 MA's), (31, 5822), (48, 5936), (50, 5996),

Gene: Radiance_80 Start: 49352, Stop: 49621, Start Num: 25

Candidate Starts for Radiance_80:

(17, 49322), (23, 49328), (Start: 25 @49352 has 202 MA's), (27, 49373), (44, 49472), (45, 49478), (55, 49598),

Gene: Raela_9 Start: 3191, Stop: 3475, Start Num: 25

Candidate Starts for Raela_9:

(Start: 25 @3191 has 202 MA's), (Start: 28 @3215 has 4 MA's), (42, 3290), (52, 3419), (56, 3455),

Gene: Redno2_72 Start: 48485, Stop: 48225, Start Num: 28

Candidate Starts for Redno2_72:

(Start: 25 @48509 has 202 MA's), (Start: 28 @48485 has 4 MA's), (42, 48410), (52, 48281), (56, 48245),

Gene: Rita_88 Start: 51756, Stop: 52040, Start Num: 25

Candidate Starts for Rita_88:

(Start: 25 @51756 has 202 MA's), (Start: 28 @51780 has 4 MA's), (42, 51855), (52, 51984), (56, 52020),

Gene: RitaG_82 Start: 50372, Stop: 50656, Start Num: 25

Candidate Starts for RitaG_82:

(Start: 25 @50372 has 202 MA's), (Start: 28 @50396 has 4 MA's), (42, 50471), (52, 50600), (56, 50636),

Gene: Rockne_82 Start: 47914, Stop: 48198, Start Num: 25

Candidate Starts for Rockne_82:

(Start: 25 @47914 has 202 MA's), (Start: 28 @47938 has 4 MA's), (42, 48013), (52, 48142), (56, 48178),

Gene: Royals2015_90 Start: 49759, Stop: 50043, Start Num: 25

Candidate Starts for Royals2015_90:

(Start: 25 @49759 has 202 MA's), (Start: 28 @49783 has 4 MA's), (31, 49792), (45, 49891), (48, 49906), (55, 50020),

Gene: SG4_81 Start: 49453, Stop: 49737, Start Num: 25

Candidate Starts for SG4_81:

(Start: 25 @49453 has 202 MA's), (Start: 28 @49477 has 4 MA's), (42, 49552), (52, 49681), (56, 49717),

Gene: Sabbb_83 Start: 46768, Stop: 47067, Start Num: 25

Candidate Starts for Sabbb_83:

(Start: 25 @46768 has 202 MA's), (27, 46789), (30, 46804), (46, 46930), (55, 47044),

Gene: Sandalphon_75 Start: 48522, Stop: 48806, Start Num: 25

Candidate Starts for Sandalphon_75:

(Start: 18 @48492 has 3 MA's), (Start: 21 @48498 has 1 MA's), (Start: 25 @48522 has 202 MA's), (Start: 28 @48546 has 4 MA's), (42, 48621), (52, 48750), (56, 48786),

Gene: Sarma624_80 Start: 45621, Stop: 45905, Start Num: 25

Candidate Starts for Sarma624_80:

(Start: 21 @45597 has 1 MA's), (Start: 25 @45621 has 202 MA's), (Start: 28 @45645 has 4 MA's), (42, 45720), (52, 45849), (56, 45885),

Gene: SassyB_73 Start: 46094, Stop: 46378, Start Num: 25

Candidate Starts for SassyB_73:

(Start: 21 @46070 has 1 MA's), (Start: 25 @46094 has 202 MA's), (Start: 28 @46118 has 4 MA's), (42, 46193), (52, 46322), (56, 46358),

Gene: SassyB_77 Start: 47157, Stop: 47441, Start Num: 25

Candidate Starts for SassyB_77:

(Start: 25 @47157 has 202 MA's), (Start: 28 @47181 has 4 MA's), (31, 47190), (45, 47289), (48, 47304), (55, 47418),

Gene: Schatzie_70 Start: 50503, Stop: 50219, Start Num: 25

Candidate Starts for Schatzie_70:

(Start: 25 @50503 has 202 MA's), (Start: 28 @50479 has 4 MA's), (42, 50404), (52, 50275), (56, 50239),

Gene: Seabastian_89 Start: 49769, Stop: 50089, Start Num: 25

Candidate Starts for Seabastian_89:

(Start: 21 @49745 has 1 MA's), (Start: 25 @49769 has 202 MA's), (Start: 28 @49793 has 4 MA's), (42, 49868), (52, 49997), (56, 50033),

Gene: Seagreen_80 Start: 49149, Stop: 49481, Start Num: 16

Candidate Starts for Seagreen_80:

(6, 49053), (Start: 16 @49149 has 1 MA's), (Start: 21 @49164 has 1 MA's), (Start: 25 @49197 has 202 MA's), (Start: 28 @49221 has 4 MA's), (52, 49425), (56, 49461),

Gene: ShamWow_44 Start: 36121, Stop: 35825, Start Num: 25

Candidate Starts for ShamWow_44:

(Start: 25 @36121 has 202 MA's), (30, 36085), (32, 36067), (38, 36034), (43, 35992), (56, 35845),

Gene: Shauna1_81 Start: 49655, Stop: 49939, Start Num: 25

Candidate Starts for Shauna1_81:

(Start: 25 @49655 has 202 MA's), (Start: 28 @49679 has 4 MA's), (42, 49754), (52, 49883), (56, 49919),

Gene: ShowerHandel_80 Start: 48717, Stop: 48983, Start Num: 28

Candidate Starts for ShowerHandel_80:

(Start: 28 @48717 has 4 MA's), (32, 48744), (36, 48759), (48, 48849), (52, 48927), (56, 48963),

Gene: SkiPole_68 Start: 41922, Stop: 41608, Start Num: 18

Candidate Starts for SkiPole_68:

(Start: 18 @41922 has 3 MA's), (Start: 21 @41916 has 1 MA's), (Start: 25 @41892 has 202 MA's), (Start: 28 @41868 has 4 MA's), (42, 41793), (52, 41664), (56, 41628),

Gene: Soul22_82 Start: 47187, Stop: 47471, Start Num: 25

Candidate Starts for Soul22_82:

(Start: 18 @47157 has 3 MA's), (Start: 21 @47163 has 1 MA's), (Start: 25 @47187 has 202 MA's), (Start: 28 @47211 has 4 MA's), (42, 47286), (52, 47415), (56, 47451),

Gene: Soul22_84 Start: 47805, Stop: 48131, Start Num: 25

Candidate Starts for Soul22_84:

(Start: 25 @47805 has 202 MA's), (29, 47838), (30, 47841), (33, 47868), (35, 47874), (48, 47994), (55, 48108),

Gene: Spartacus_87 Start: 51565, Stop: 51846, Start Num: 25

Candidate Starts for Spartacus_87:

(Start: 25 @51565 has 202 MA's), (Start: 28 @51586 has 4 MA's), (34, 51619), (52, 51790), (56, 51826),

Gene: Spartacus_89 Start: 52261, Stop: 52542, Start Num: 25

Candidate Starts for Spartacus_89:

(Start: 25 @52261 has 202 MA's), (Start: 28 @52285 has 4 MA's), (31, 52294), (48, 52408), (51, 52480), (52, 52486),

Gene: Squint_76 Start: 48140, Stop: 47856, Start Num: 25

Candidate Starts for Squint_76:

(Start: 25 @48140 has 202 MA's), (Start: 28 @48116 has 4 MA's), (42, 48041), (52, 47912), (56, 47876),

Gene: Squirty_81 Start: 52224, Stop: 52505, Start Num: 25

Candidate Starts for Squirty_81:

(Start: 25 @52224 has 202 MA's), (Start: 28 @52248 has 4 MA's), (42, 52323), (52, 52452), (54, 52476), (56, 52488), (57, 52494),

Gene: StAnnes_83 Start: 50113, Stop: 50397, Start Num: 25

Candidate Starts for StAnnes_83:

(20, 50083), (Start: 25 @50113 has 202 MA's), (Start: 28 @50137 has 4 MA's), (42, 50212), (52, 50341), (56, 50377),

Gene: StellaBean_42 Start: 35445, Stop: 35149, Start Num: 25

Candidate Starts for StellaBean_42:

(Start: 25 @35445 has 202 MA's), (30, 35409), (32, 35391), (38, 35358), (43, 35316), (56, 35169),

Gene: Strokeseat_80 Start: 47313, Stop: 47594, Start Num: 25

Candidate Starts for Strokeseat_80:

(Start: 25 @47313 has 202 MA's), (Start: 28 @47337 has 4 MA's), (31, 47346), (48, 47460), (51, 47532), (52, 47538),

Gene: Strokeseat_76 Start: 46226, Stop: 46510, Start Num: 25

Candidate Starts for Strokeseat_76:

(Start: 21 @46202 has 1 MA's), (Start: 25 @46226 has 202 MA's), (Start: 28 @46250 has 4 MA's), (42, 46325), (52, 46454), (56, 46490),

Gene: Superphikiman_73 Start: 47231, Stop: 46947, Start Num: 25

Candidate Starts for Superphikiman_73:

(Start: 25 @47231 has 202 MA's), (Start: 28 @47207 has 4 MA's), (42, 47132), (52, 47003), (56, 46967),

Gene: Taj_92 Start: 52011, Stop: 52295, Start Num: 25

Candidate Starts for Taj_92:

(11, 51912), (Start: 25 @52011 has 202 MA's), (Start: 28 @52035 has 4 MA's), (31, 52044), (45, 52143), (48, 52158), (55, 52272),

Gene: Taj_88 Start: 50947, Stop: 51231, Start Num: 25

Candidate Starts for Taj_88:

(4, 50785), (Start: 25 @50947 has 202 MA's), (Start: 28 @50971 has 4 MA's), (42, 51046), (52, 51175), (56, 51211),

Gene: Tesla_9 Start: 2778, Stop: 3062, Start Num: 25
Candidate Starts for Tesla_9:
(Start: 25 @2778 has 202 MA's), (Start: 28 @2802 has 4 MA's), (42, 2877), (52, 3006), (56, 3042),

Gene: ThetaBob_85 Start: 48938, Stop: 49243, Start Num: 25
Candidate Starts for ThetaBob_85:
(Start: 25 @48938 has 202 MA's), (29, 48971), (30, 48974), (33, 49001), (35, 49007), (48, 49127), (53, 49202),

Gene: ThreeRngTarjay_73 Start: 51787, Stop: 51503, Start Num: 25
Candidate Starts for ThreeRngTarjay_73:
(Start: 25 @51787 has 202 MA's), (Start: 28 @51763 has 4 MA's), (42, 51688), (52, 51559), (56, 51523),

Gene: Toto_43 Start: 36121, Stop: 35825, Start Num: 25
Candidate Starts for Toto_43:
(Start: 25 @36121 has 202 MA's), (30, 36085), (32, 36067), (38, 36034), (43, 35992), (56, 35845),

Gene: Tuco_45 Start: 36629, Stop: 36333, Start Num: 25
Candidate Starts for Tuco_45:
(Start: 25 @36629 has 202 MA's), (30, 36593), (32, 36575), (38, 36542), (43, 36500), (56, 36353),

Gene: Tweety_82 Start: 50025, Stop: 50309, Start Num: 25
Candidate Starts for Tweety_82:
(4, 49863), (Start: 25 @50025 has 202 MA's), (Start: 28 @50049 has 4 MA's), (42, 50124), (52, 50253), (56, 50289),

Gene: Tweety_86 Start: 51088, Stop: 51372, Start Num: 25
Candidate Starts for Tweety_86:
(Start: 25 @51088 has 202 MA's), (Start: 28 @51112 has 4 MA's), (31, 51121), (45, 51220), (48, 51235), (55, 51349),

Gene: UncleRicky_80 Start: 47788, Stop: 48072, Start Num: 25
Candidate Starts for UncleRicky_80:
(Start: 25 @47788 has 202 MA's), (Start: 28 @47812 has 4 MA's), (42, 47887), (52, 48016), (56, 48052),

Gene: VRedHorse_86 Start: 47830, Stop: 48114, Start Num: 25
Candidate Starts for VRedHorse_86:
(Start: 21 @47806 has 1 MA's), (Start: 25 @47830 has 202 MA's), (Start: 28 @47854 has 4 MA's), (42, 47929), (52, 48058), (56, 48094),

Gene: VRedHorse_80 Start: 46368, Stop: 46637, Start Num: 25
Candidate Starts for VRedHorse_80:
(Start: 25 @46368 has 202 MA's), (27, 46389), (44, 46488), (45, 46494), (55, 46614),

Gene: Velveteen_75 Start: 45597, Stop: 45905, Start Num: 21
Candidate Starts for Velveteen_75:
(Start: 21 @45597 has 1 MA's), (Start: 25 @45621 has 202 MA's), (Start: 28 @45645 has 4 MA's), (42, 45720), (52, 45849), (56, 45885),

Gene: Wachhund_81 Start: 46941, Stop: 47240, Start Num: 25
Candidate Starts for Wachhund_81:

(Start: 25 @46941 has 202 MA's), (27, 46962), (30, 46977), (46, 47103), (55, 47217),

Gene: Wanda_77 Start: 50474, Stop: 50193, Start Num: 25

Candidate Starts for Wanda_77:

(Start: 25 @50474 has 202 MA's), (Start: 28 @50453 has 4 MA's), (34, 50420), (52, 50249), (56, 50213),

Gene: Wee_91 Start: 52087, Stop: 52371, Start Num: 25

Candidate Starts for Wee_91:

(Start: 25 @52087 has 202 MA's), (Start: 28 @52111 has 4 MA's), (31, 52120), (45, 52219), (48, 52234), (55, 52348),

Gene: Wee_87 Start: 51023, Stop: 51307, Start Num: 25

Candidate Starts for Wee_87:

(4, 50861), (Start: 25 @51023 has 202 MA's), (Start: 28 @51047 has 4 MA's), (42, 51122), (52, 51251), (56, 51287),

Gene: Whatsapiecost_74 Start: 44329, Stop: 44613, Start Num: 25

Candidate Starts for Whatsapiecost_74:

(Start: 25 @44329 has 202 MA's), (Start: 28 @44353 has 4 MA's), (31, 44362), (48, 44476), (55, 44590),

Gene: WillSterrel_80 Start: 49364, Stop: 49648, Start Num: 25

Candidate Starts for WillSterrel_80:

(Start: 18 @49334 has 3 MA's), (Start: 21 @49340 has 1 MA's), (Start: 25 @49364 has 202 MA's), (Start: 28 @49388 has 4 MA's), (42, 49463), (52, 49592), (56, 49628),

Gene: XFactor_77 Start: 48229, Stop: 48513, Start Num: 25

Candidate Starts for XFactor_77:

(Start: 25 @48229 has 202 MA's), (Start: 28 @48253 has 4 MA's), (42, 48328), (56, 48493),

Gene: Yeet_71 Start: 50004, Stop: 49720, Start Num: 25

Candidate Starts for Yeet_71:

(Start: 25 @50004 has 202 MA's), (Start: 28 @49980 has 4 MA's), (52, 49776), (56, 49740),

Gene: Zapner_90 Start: 47899, Stop: 48183, Start Num: 25

Candidate Starts for Zapner_90:

(Start: 25 @47899 has 202 MA's), (Start: 28 @47923 has 4 MA's), (52, 48127), (56, 48163),

Gene: Zelink_73 Start: 52099, Stop: 51815, Start Num: 25

Candidate Starts for Zelink_73:

(Start: 25 @52099 has 202 MA's), (Start: 28 @52075 has 4 MA's), (42, 52000), (52, 51871), (56, 51835),

Gene: Zerg_82 Start: 49172, Stop: 49456, Start Num: 25

Candidate Starts for Zerg_82:

(Start: 21 @49148 has 1 MA's), (Start: 25 @49172 has 202 MA's), (Start: 28 @49196 has 4 MA's), (42, 49271), (52, 49400), (56, 49436),