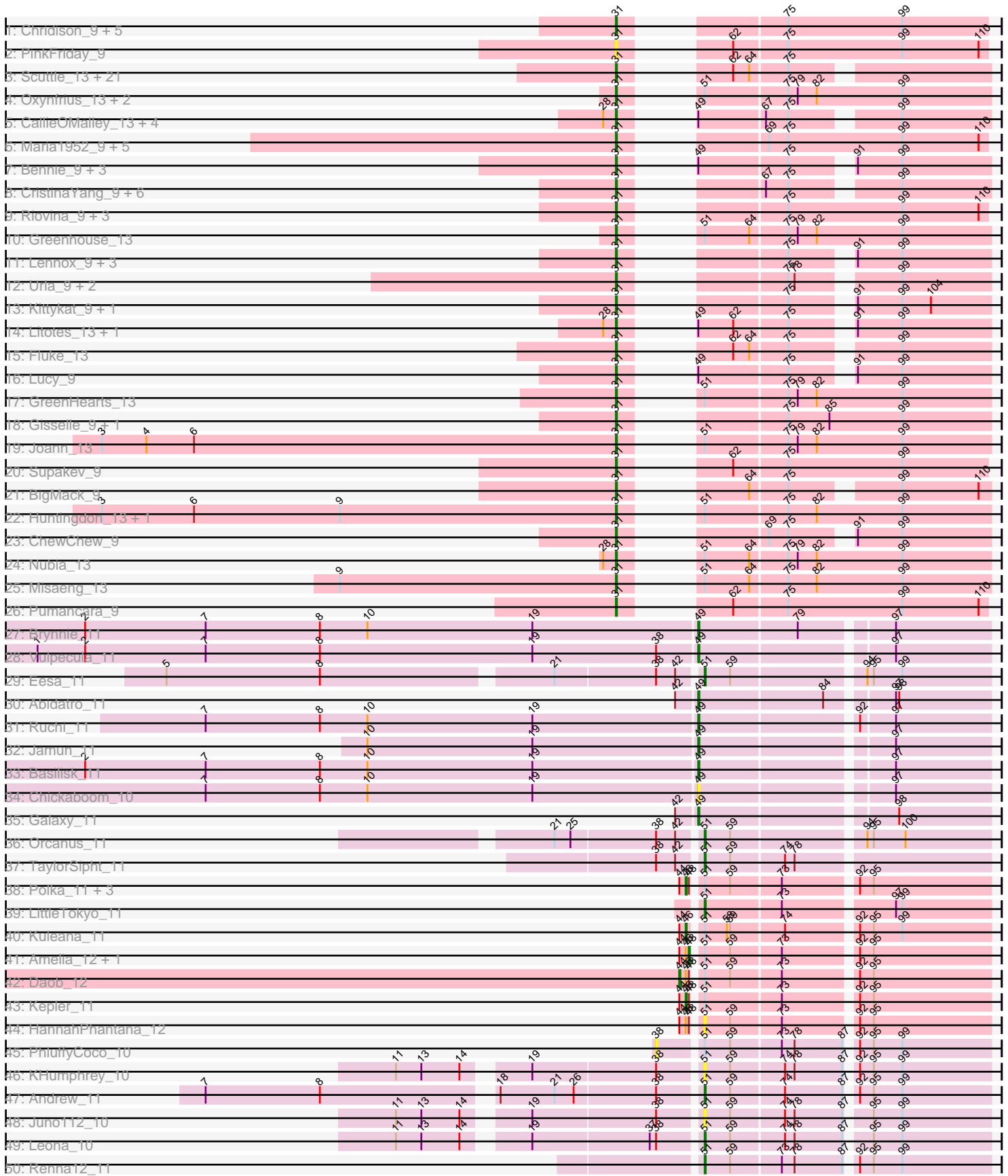
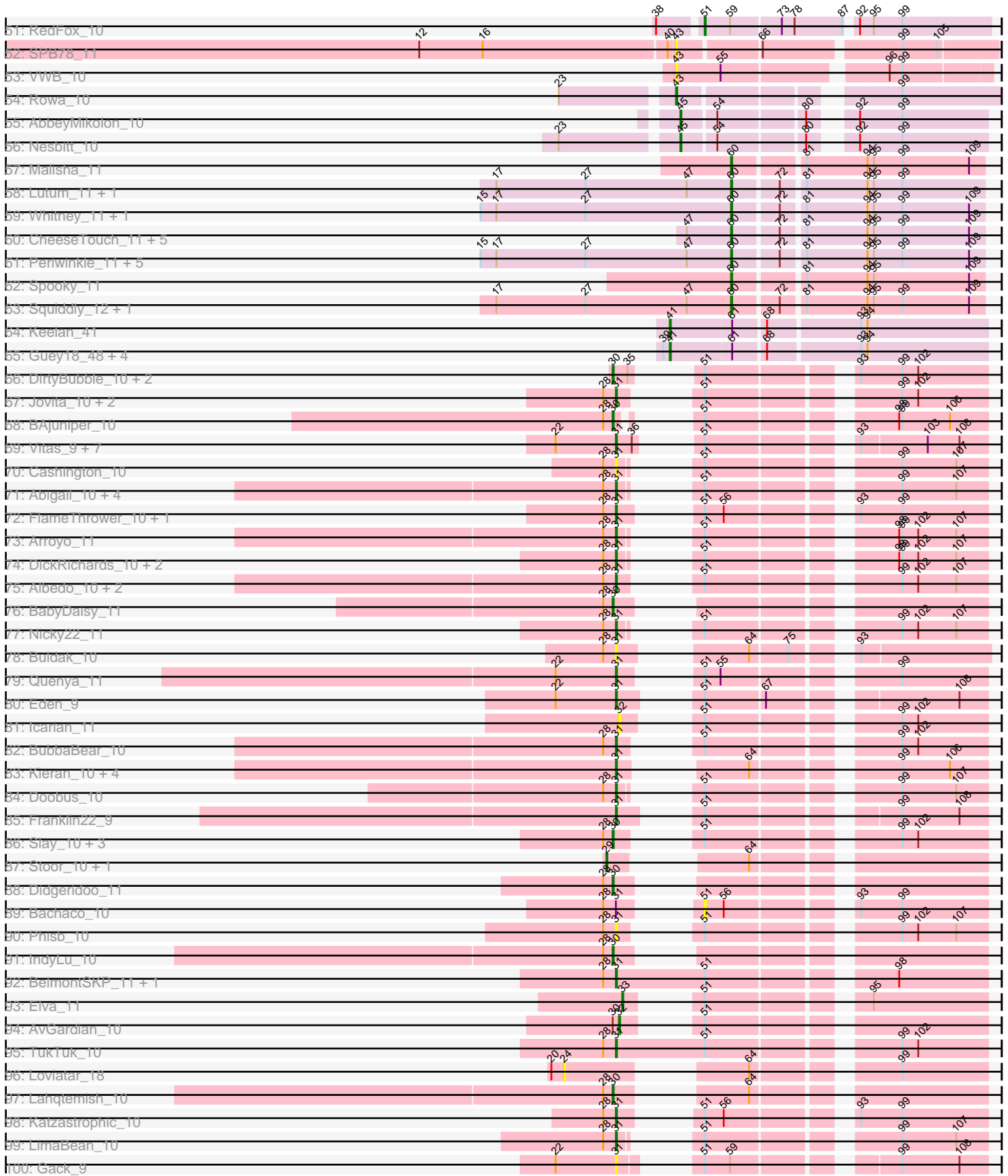


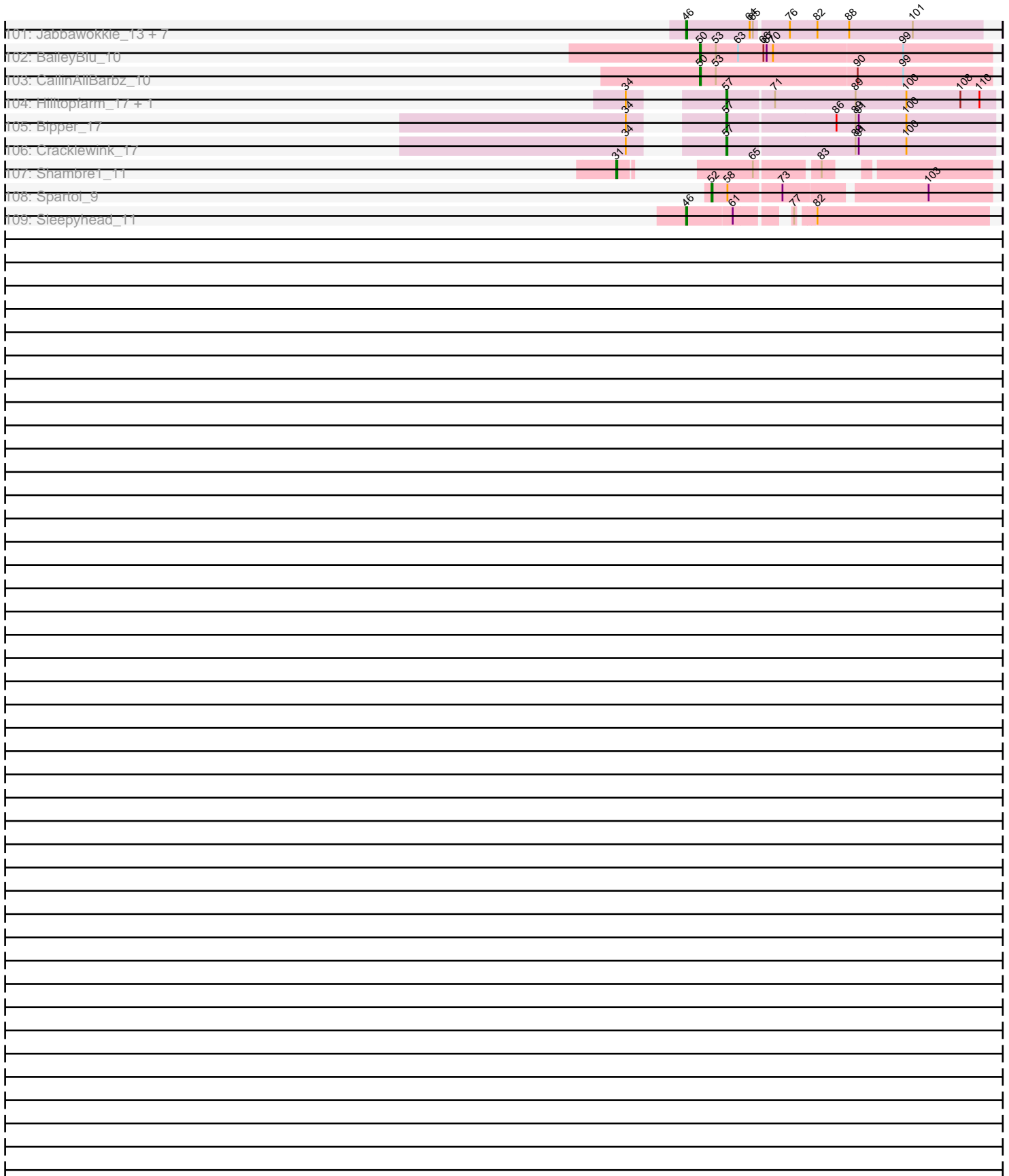
Pham 157567



Pham 157567



Pham 157567



Note: Tracks are now grouped by subcluster and scaled. Switching in subcluster is indicated by changes in track color. Track scale is now set by default to display the region 30 bp upstream of start 1 to 30 bp downstream of the last possible start. If this default region is judged to be packed too tightly with annotated starts, the track will be further scaled to only show that region of the ORF with annotated starts. This action will be indicated by adding "Zoomed" to the title. For starts, yellow indicates the location of called starts comprised solely of Glimmer/GeneMark auto-annotations, green indicates the location of called starts with at least 1 manual gene annotation.

Pham 157567 Report

This analysis was run 04/13/24 on database version 558.

WARNING: Pham size does not match number of genes in report. Either unphamerated genes have been added (by you) or starterator has removed genes due to invalid start codon.

Pham number 157567 has 225 members, 21 are drafts.

Phages represented in each track:

- Track 1 : Chridison_9, DrRobert_9, Vulture_9, HunterDalle_9, WonderBoy_9, AustinPowers_9
- Track 2 : PinkFriday_9
- Track 3 : Scuttle_13, Carpal_13, RAP15_13, Dino_13, Potatoes_13, Cholula_13, Korra_13, Glenn_13, Vallejo_13, Jumboset_13, Savage2526_13, Wawa_13, TattModd_13, Rozby_13, MrGloopy_13, Riverdale_13, Immaculata_13, MeganNoll_13, Beethoven_13, Kalizoi_13, BrotherBLo_13, Zorro_13
- Track 4 : Oxyfrius_13, Lakshmi_13, Albanese_13
- Track 5 : CallieOMalley_13, Canowicakte_13, Suppi_13, Wayne_13, AppleCider_13
- Track 6 : Maria1952_9, KingBob_9, Herb_9, Sergei_9, Daiboju_9, Temper16_9
- Track 7 : Bennie_9, HeadNerd_9, Huckleberry_9, Moki_9
- Track 8 : CristinaYang_9, Nancia_9, Christian_9, Bodacious_9, LilStuart_9, Lasagna_9, OurGirlNessie_9
- Track 9 : Riovina_9, Eunoia_9, OMalley_9, Aledel_9
- Track 10 : Greenhouse_13
- Track 11 : Lennox_9, Makoto_9, PitaDog_9, Pterodactyl_9
- Track 12 : Urla_9, MamaPearl_9, EstebanJulior_9
- Track 13 : Kittykat_9, Preamble_9
- Track 14 : Litotes_13, PartyCup_13
- Track 15 : Fluke_13
- Track 16 : Lucy_9
- Track 17 : GreenHearts_13
- Track 18 : Gisselle_9, DreamTeam_9
- Track 19 : Joann_13
- Track 20 : Supakev_9
- Track 21 : BigMack_9
- Track 22 : Huntingdon_13, RcigaStruga_13
- Track 23 : ChewChew_9
- Track 24 : Nubia_13
- Track 25 : Misaeng_13
- Track 26 : Pumancara_9
- Track 27 : Brynnie_11
- Track 28 : Vulpecula_11

- Track 29 : Eesa_11
- Track 30 : Abidatro_11
- Track 31 : Ruchi_11
- Track 32 : Jamun_11
- Track 33 : Basilisk_11
- Track 34 : Chickaboom_10
- Track 35 : Galaxy_11
- Track 36 : Orcanus_11
- Track 37 : TaylorSipht_11
- Track 38 : Polka_11, Cote_12, Coral_11, Melons_12
- Track 39 : LittleTokyo_11
- Track 40 : Kuleana_11
- Track 41 : Amelia_12, Lunar_12
- Track 42 : Daob_12
- Track 43 : Kepler_11
- Track 44 : HannahPhantana_12
- Track 45 : PhluffyCoco_10
- Track 46 : KHumphrey_10
- Track 47 : Andrew_11
- Track 48 : Juno112_10
- Track 49 : Leona_10
- Track 50 : Renna12_11
- Track 51 : RedFox_10
- Track 52 : SPB78_11
- Track 53 : VWB_10
- Track 54 : Rowa_10
- Track 55 : AbbeyMikolon_10
- Track 56 : Nesbitt_10
- Track 57 : Malisha_11
- Track 58 : Lutum_11, Kenna_11
- Track 59 : Whitney_11, Getalong_11
- Track 60 : CheeseTouch_11, Budski_11, LitninMcQueen_11, Kamaru_11, Holliday_11, Phabuloso_11
- Track 61 : Periwinkle_11, Leroy_11, Horus_11, BENtherdunthat_11, Frickyeah_11, Asapag_11
- Track 62 : Spooky_11
- Track 63 : Squiddly_12, Phistory_11
- Track 64 : Keelan_41
- Track 65 : Guey18_48, Volt_45, Fryberger_43, Ronaldo_46, Ziko_46
- Track 66 : DirtyBubble_10, Stromboli_10, BabyYoda_10
- Track 67 : Jovita_10, QMacho_11, Eula_10
- Track 68 : BAjuniper_10
- Track 69 : Vitas_9, Clayda5_9, Brahms_9, Bernstein_9, Rollins_9, Coltrane_9, Armstrong_9, Skylord_9
- Track 70 : Cashington_10
- Track 71 : Abigail_10, Burritobowl_10, Albright_10, Johnathan_10, Avocadoman_10
- Track 72 : FlameThrower_10, Celaena_10
- Track 73 : Arroyo_11
- Track 74 : DickRichards_10, CroZenni_10, SansAfet_10
- Track 75 : Albedo_10, Kenzers_10, Lynlen_10
- Track 76 : BabyDaisy_11
- Track 77 : Nicky22_11
- Track 78 : Buldak_10

- Track 79 : Quenya_11
- Track 80 : Eden_9
- Track 81 : Icarian_11
- Track 82 : BubbaBear_10
- Track 83 : Kieran_10, ChiliPepper_10, Sharkboy_10, Dismas_10, Rona_10
- Track 84 : Doobus_10
- Track 85 : Franklin22_9
- Track 86 : Slay_10, Finalfrontier_11, SarBear_10, Swervy_10
- Track 87 : Stoor_10, SanaSana_11
- Track 88 : Didgeridoo_11
- Track 89 : Bachaco_10
- Track 90 : Phisb_10
- Track 91 : IndyLu_10
- Track 92 : BelmontSKP_11, AnnaLie_11
- Track 93 : Elva_11
- Track 94 : AvGardian_10
- Track 95 : TukTuk_10
- Track 96 : Loviatar_18
- Track 97 : Lahqtemish_10
- Track 98 : Katzastrophic_10
- Track 99 : LimaBean_10
- Track 100 : Gack_9
- Track 101 : Jabbawokkie_13, Avani_12, Yoshi_12, Soul22_12, Demsculpinboyz_12, Che9d_12, Blarby_13, Zapner_13
- Track 102 : BaileyBlu_10
- Track 103 : CallinAllBarbz_10
- Track 104 : Hilltopfarm_17, Typha_17
- Track 105 : Bipper_17
- Track 106 : Cracklewink_17
- Track 107 : Shambre1_11
- Track 108 : Spartoi_9
- Track 109 : Sleepyhead_11

Summary of Final Annotations (See graph section above for start numbers):

The start number called the most often in the published annotations is 31, it was called in 122 of the 204 non-draft genes in the pham.

Genes that call this "Most Annotated" start:

- Abigail_10, Albanese_13, Albedo_10, Albright_10, Aledel_9, AnnaLie_11, AppleCider_13, Armstrong_9, Arroyo_11, AustinPowers_9, Avocadoman_10, Beethoven_13, BelmontSKP_11, Bennie_9, Bernstein_9, BigMack_9, Bodacious_9, Brahms_9, BrotherBLo_13, BubbaBear_10, Buldak_10, Burritobowl_10, CallieOMalley_13, Canowicakte_13, Carpal_13, Cashington_10, Celaena_10, ChewChew_9, ChiliPepper_10, Cholula_13, Chridison_9, Christian_9, Clayda5_9, Coltrane_9, CristinaYang_9, CroZenni_10, Daiboju_9, DickRichards_10, Dino_13, Dismas_10, Doobus_10, DrRobert_9, DreamTeam_9, Eden_9, EstebanJulior_9, Eula_10, Eunoia_9, FlameThrower_10, Fluke_13, Franklin22_9, Gack_9, Gisselle_9, Glenn_13, GreenHearts_13, Greenhouse_13, HeadNerd_9, Herb_9, Huckleberry_9, HunterDalle_9, Huntingdon_13, Immaculata_13, Joann_13, Johnathan_10,

Jovita_10, Jumboset_13, Kalizoi_13, Katzastrophic_10, Kenzers_10, Kieran_10, KingBob_9, Kittykat_9, Korra_13, Lakshmi_13, Lasagna_9, Lennox_9, LilStuart_9, LimaBean_10, Litotes_13, Lucy_9, Lynlen_10, Makoto_9, MamaPearl_9, Maria1952_9, MeganNoll_13, Misaeng_13, Moki_9, MrGloopy_13, Nancia_9, Nicky22_11, Nubia_13, OMalley_9, OurGirlNessie_9, Oxynfrius_13, PartyCup_13, Phisb_10, PinkFriday_9, PitaDog_9, Potatoes_13, Preamble_9, Pterodactyl_9, Pumancara_9, QMacho_11, Quenya_11, RAP15_13, RcigaStruga_13, Riovina_9, Riverdale_13, Rollins_9, Rona_10, Rozby_13, SansAfet_10, Savage2526_13, Scuttle_13, Sergei_9, Shambre1_11, Sharkboy_10, Skylord_9, Supakev_9, Suppi_13, TattModd_13, Temper16_9, TukTuk_10, Urla_9, Vallejo_13, Vitas_9, Vulture_9, Wawa_13, Wayne_13, WonderBoy_9, Zorro_13,

Genes that have the "Most Annotated" start but do not call it:

- Bachaco_10,

Genes that do not have the "Most Annotated" start:

- AbbeyMikolon_10, Abidatro_11, Amelia_12, Andrew_11, Asapag_11, AvGardian_10, Avani_12, BAjuniper_10, BENtherdunthat_11, BabyDaisy_11, BabyYoda_10, BaileyBlu_10, Basilisk_11, Bipper_17, Blarby_13, Brynnie_11, Budski_11, CallinAllBarbz_10, Che9d_12, CheeseTouch_11, Chickaboom_10, Coral_11, Cote_12, Cracklewink_17, Daob_12, Demsculpinboyz_12, Didgeridoo_11, DirtyBubble_10, Eesa_11, Elva_11, Finalfrontier_11, Frickyeah_11, Fryberger_43, Galaxy_11, Getalong_11, Guey18_48, HannahPhantana_12, Hilltopfarm_17, Holliday_11, Horus_11, Icarian_11, IndyLu_10, Jabbawokkie_13, Jamun_11, Juno112_10, KHumphrey_10, Kamaru_11, Keelan_41, Kenna_11, Kepler_11, Kuleana_11, Lahqtemish_10, Leona_10, Leroy_11, LitninMcQueen_11, LittleTokyo_11, Loviatar_18, Lunar_12, Lutum_11, Malisha_11, Melons_12, Nesbitt_10, Orcanus_11, Periwinkle_11, Phabuloso_11, Phistory_11, PhluffyCoco_10, Polka_11, RedFox_10, Renna12_11, Ronaldo_46, Rowa_10, Ruchi_11, SPB78_11, SanaSana_11, SarBear_10, Slay_10, Sleepyhead_11, Soul22_12, Spartoi_9, Spooky_11, Squiddly_12, Stoor_10, Stromboli_10, Swervy_10, TaylorSipht_11, Typha_17, VWB_10, Volt_45, Vulpecula_11, Whitney_11, Yoshi_12, Zapner_13, Ziko_46,

Summary by start number:

Start 24:

- Found in 1 of 225 (0.4%) of genes in pham
- No Manual Annotations of this start.
- Called 100.0% of time when present
- Phage (with cluster) where this start called: Loviatar_18 (EB),

Start 29:

- Found in 2 of 225 (0.9%) of genes in pham
- Manual Annotations of this start: 2 of 204
- Called 100.0% of time when present
- Phage (with cluster) where this start called: SanaSana_11 (EB), Stoor_10 (EB),

Start 30:

- Found in 13 of 225 (5.8%) of genes in pham
- Manual Annotations of this start: 12 of 204
- Called 92.3% of time when present

- Phage (with cluster) where this start called: BAjuniper_10 (EB), BabyDaisy_11 (EB), BabyYoda_10 (EB), Didgeridoo_11 (EB), DirtyBubble_10 (EB), Finalfrontier_11 (EB), IndyLu_10 (EB), Lahqtemish_10 (EB), SarBear_10 (EB), Slay_10 (EB), Stromboli_10 (EB), Swervy_10 (EB),

Start 31:

- Found in 131 of 225 (58.2%) of genes in pham
- Manual Annotations of this start: 122 of 204
- Called 99.2% of time when present
- Phage (with cluster) where this start called: Abigail_10 (EB), Albanese_13 (AK), Albedo_10 (EB), Albright_10 (EB), Aledel_9 (AK), AnnaLie_11 (EB), AppleCider_13 (AK), Armstrong_9 (EB), Arroyo_11 (EB), AustinPowers_9 (AK), Avocadoman_10 (EB), Beethoven_13 (AK), BelmontSKP_11 (EB), Bennie_9 (AK), Bernstein_9 (EB), BigMack_9 (AK), Bodacious_9 (AK), Brahms_9 (EB), BrotherBLo_13 (AK), BubbaBear_10 (EB), Buldak_10 (EB), Burritobowl_10 (EB), CallieOMalley_13 (AK), Canowicakte_13 (AK), Carpal_13 (AK), Cashington_10 (EB), Celaena_10 (EB), ChewChew_9 (AK), ChiliPepper_10 (EB), Cholula_13 (AK), Chridison_9 (AK), Christian_9 (AK), Clayda5_9 (EB), Coltrane_9 (EB), CristinaYang_9 (AK), CroZenni_10 (EB), Daiboju_9 (AK), DickRichards_10 (EB), Dino_13 (AK), Dismas_10 (EB), Doobus_10 (EB), DrRobert_9 (AK), DreamTeam_9 (AK), Eden_9 (EB), EstebanJulior_9 (AK), Eula_10 (EB), Eunoia_9 (AK), FlameThrower_10 (EB), Fluke_13 (AK), Franklin22_9 (EB), Gack_9 (EB), Gisselle_9 (AK), Glenn_13 (AK), GreenHearts_13 (AK), Greenhouse_13 (AK), HeadNerd_9 (AK), Herb_9 (AK), Huckleberry_9 (AK), HunterDalle_9 (AK), Huntingdon_13 (AK), Immaculata_13 (AK), Joann_13 (AK), Johnathan_10 (EB), Jovita_10 (EB), Jumboset_13 (AK), Kalizoi_13 (AK), Katzastrophic_10 (EB), Kenzers_10 (EB), Kieran_10 (EB), KingBob_9 (AK), Kittykat_9 (AK), Korra_13 (AK), Lakshmi_13 (AK), Lasagna_9 (AK), Lennox_9 (AK), LilStuart_9 (AK), LimaBean_10 (EB), Litotes_13 (AK), Lucy_9 (AK), Lynlen_10 (EB), Makoto_9 (AK), MamaPearl_9 (AK), Maria1952_9 (AK), MeganNoll_13 (AK), Misaeng_13 (AK), Moki_9 (AK), MrGloopy_13 (AK), Nancia_9 (AK), Nicky22_11 (EB), Nubia_13 (AK), OMalley_9 (AK), OurGirlNessie_9 (AK), Oxyfrius_13 (AK), PartyCup_13 (AK), Phisb_10 (EB), PinkFriday_9 (AK), PitaDog_9 (AK), Potatoes_13 (AK), Preamble_9 (AK), Pterodactyl_9 (AK), Pumancara_9 (AK), QMacho_11 (EB), Quenya_11 (EB), RAP15_13 (AK), RcigaStruga_13 (AK), Riovina_9 (AK), Riverdale_13 (AK), Rollins_9 (EB), Rona_10 (EB), Rozby_13 (AK), SansAfet_10 (EB), Savage2526_13 (AK), Scuttle_13 (AK), Sergei_9 (AK), Shambre1_11 (singleton), Sharkboy_10 (EB), Skylord_9 (EB), Supakev_9 (AK), Suppi_13 (AK), TattModd_13 (AK), Temper16_9 (AK), TukTuk_10 (EB), Urla_9 (AK), Vallejo_13 (AK), Vitas_9 (EB), Vulture_9 (AK), Wawa_13 (AK), Wayne_13 (AK), WonderBoy_9 (AK), Zorro_13 (AK),

Start 32:

- Found in 2 of 225 (0.9%) of genes in pham
- Manual Annotations of this start: 1 of 204
- Called 100.0% of time when present
- Phage (with cluster) where this start called: AvGardian_10 (EB), Icarian_11 (EB),

Start 33:

- Found in 1 of 225 (0.4%) of genes in pham
- Manual Annotations of this start: 1 of 204
- Called 100.0% of time when present
- Phage (with cluster) where this start called: Elva_11 (EB),

Start 38:

- Found in 10 of 225 (4.4%) of genes in pham
- No Manual Annotations of this start.
- Called 10.0% of time when present
- Phage (with cluster) where this start called: PhluffyCoco_10 (AS3),

Start 41:

- Found in 6 of 225 (2.7%) of genes in pham
- Manual Annotations of this start: 6 of 204
- Called 100.0% of time when present
- Phage (with cluster) where this start called: Fryberger_43 (DP), Guey18_48 (DP), Keelan_41 (DP), Ronaldo_46 (DP), Volt_45 (DP), Ziko_46 (DP),

Start 43:

- Found in 3 of 225 (1.3%) of genes in pham
- Manual Annotations of this start: 1 of 204
- Called 100.0% of time when present
- Phage (with cluster) where this start called: Rowa_10 (BL), SPB78_11 (BA), VWB_10 (BA),

Start 44:

- Found in 10 of 225 (4.4%) of genes in pham
- Manual Annotations of this start: 1 of 204
- Called 10.0% of time when present
- Phage (with cluster) where this start called: Daob_12 (AS2),

Start 45:

- Found in 2 of 225 (0.9%) of genes in pham
- Manual Annotations of this start: 2 of 204
- Called 100.0% of time when present
- Phage (with cluster) where this start called: AbbeyMikolon_10 (BL), Nesbitt_10 (BL),

Start 46:

- Found in 19 of 225 (8.4%) of genes in pham
- Manual Annotations of this start: 14 of 204
- Called 78.9% of time when present
- Phage (with cluster) where this start called: Avani_12 (F2), Blarby_13 (F), Che9d_12 (F2), Coral_11 (AS2), Cote_12 (AS2), Demsculpinboyz_12 (F2), Jabbawokkie_13 (F2), Kepler_11 (AS2), Kuleana_11 (AS2), Melons_12 (AS2), Polka_11 (AS2), Sleepyhead_11 (singleton), Soul22_12 (F2), Yoshi_12 (F2), Zapner_13 (F2),

Start 48:

- Found in 9 of 225 (4.0%) of genes in pham
- Manual Annotations of this start: 2 of 204
- Called 22.2% of time when present
- Phage (with cluster) where this start called: Amelia_12 (AS2), Lunar_12 (AS2),

Start 49:

- Found in 20 of 225 (8.9%) of genes in pham
- Manual Annotations of this start: 7 of 204
- Called 40.0% of time when present

- Phage (with cluster) where this start called: Abidatro_11 (AS1), Basilisk_11 (AS1), Brynnie_11 (AS1), Chickaboom_10 (AS1), Galaxy_11 (AS1), Jamun_11 (AS1), Ruchi_11 (AS1), Vulpecula_11 (AS1),

Start 50:

- Found in 2 of 225 (0.9%) of genes in pham
- Manual Annotations of this start: 2 of 204
- Called 100.0% of time when present
- Phage (with cluster) where this start called: BaileyBlu_10 (FP), CallinAllBarbz_10 (FP),

Start 51:

- Found in 82 of 225 (36.4%) of genes in pham
- Manual Annotations of this start: 8 of 204
- Called 14.6% of time when present
- Phage (with cluster) where this start called: Andrew_11 (AS3), Bachaco_10 (EB), Eesa_11 (AS1), HannahPhantana_12 (AS2), Juno112_10 (AS3), KHumphrey_10 (AS3), Leona_10 (AS3), LittleTokyo_11 (AS2), Orcanus_11 (AS1), RedFox_10 (AS3), Renna12_11 (AS3), TaylorSipht_11 (AS1),

Start 52:

- Found in 1 of 225 (0.4%) of genes in pham
- Manual Annotations of this start: 1 of 204
- Called 100.0% of time when present
- Phage (with cluster) where this start called: Spartoi_9 (singleton),

Start 57:

- Found in 4 of 225 (1.8%) of genes in pham
- Manual Annotations of this start: 4 of 204
- Called 100.0% of time when present
- Phage (with cluster) where this start called: Bipper_17 (Y), Cracklewink_17 (Y), Hilltopfarm_17 (Y), Typha_17 (Y),

Start 60:

- Found in 20 of 225 (8.9%) of genes in pham
- Manual Annotations of this start: 18 of 204
- Called 100.0% of time when present
- Phage (with cluster) where this start called: Asapag_11 (DN1), BENtherdunthat_11 (DN1), Budski_11 (DN), CheeseTouch_11 (DN1), Frickyeah_11 (DN1), Getalong_11 (DN1), Holliday_11 (DN1), Horus_11 (DN1), Kamaru_11 (DN1), Kenna_11 (DN1), Leroy_11 (DN1), LitninMcQueen_11 (DN1), Lutum_11 (DN1), Malisha_11 (DN), Periwinkle_11 (DN1), Phabuloso_11 (DN1), Phistory_11 (DN1), Spooky_11 (DN2), Squiddly_12 (DN2), Whitney_11 (DN1),

Summary by clusters:

There are 16 clusters represented in this pham: AS3, AS2, AS1, BA, F, BL, AK, F2, FP, EB, DN1, DN2, Y, singleton, DN, DP,

Info for manual annotations of cluster AK:

- Start number 31 was manually annotated 80 times for cluster AK.

Info for manual annotations of cluster AS1:

- Start number 49 was manually annotated 7 times for cluster AS1.
- Start number 51 was manually annotated 3 times for cluster AS1.

Info for manual annotations of cluster AS2:

- Start number 44 was manually annotated 1 time for cluster AS2.
- Start number 46 was manually annotated 6 times for cluster AS2.
- Start number 48 was manually annotated 2 times for cluster AS2.
- Start number 51 was manually annotated 1 time for cluster AS2.

Info for manual annotations of cluster AS3:

- Start number 51 was manually annotated 4 times for cluster AS3.

Info for manual annotations of cluster BL:

- Start number 43 was manually annotated 1 time for cluster BL.
- Start number 45 was manually annotated 2 times for cluster BL.

Info for manual annotations of cluster DN:

- Start number 60 was manually annotated 2 times for cluster DN.

Info for manual annotations of cluster DN1:

- Start number 60 was manually annotated 14 times for cluster DN1.

Info for manual annotations of cluster DN2:

- Start number 60 was manually annotated 2 times for cluster DN2.

Info for manual annotations of cluster DP:

- Start number 41 was manually annotated 6 times for cluster DP.

Info for manual annotations of cluster EB:

- Start number 29 was manually annotated 2 times for cluster EB.
- Start number 30 was manually annotated 12 times for cluster EB.
- Start number 31 was manually annotated 41 times for cluster EB.
- Start number 32 was manually annotated 1 time for cluster EB.
- Start number 33 was manually annotated 1 time for cluster EB.

Info for manual annotations of cluster F2:

- Start number 46 was manually annotated 7 times for cluster F2.

Info for manual annotations of cluster FP:

- Start number 50 was manually annotated 2 times for cluster FP.

Info for manual annotations of cluster Y:

- Start number 57 was manually annotated 4 times for cluster Y.

Gene Information:

Gene: AbbeyMikolon_10 Start: 7532, Stop: 7783, Start Num: 45

Candidate Starts for AbbeyMikolon_10:

(Start: 45 @7532 has 2 MA's), (54, 7562), (80, 7637), (92, 7664), (99, 7703),

Gene: Abidatro_11 Start: 8071, Stop: 8328, Start Num: 49
Candidate Starts for Abidatro_11:
(42, 8053), (Start: 49 @8071 has 7 MA's), (84, 8185), (97, 8239), (98, 8242),

Gene: Abigail_10 Start: 7773, Stop: 8030, Start Num: 31
Candidate Starts for Abigail_10:
(28, 7761), (Start: 31 @7773 has 122 MA's), (Start: 51 @7794 has 8 MA's), (99, 7950), (107, 8001),

Gene: Albanese_13 Start: 10184, Stop: 10474, Start Num: 31
Candidate Starts for Albanese_13:
(Start: 31 @10184 has 122 MA's), (Start: 51 @10208 has 8 MA's), (75, 10283), (79, 10292), (82, 10310), (99, 10391),

Gene: Albedo_10 Start: 7645, Stop: 7905, Start Num: 31
Candidate Starts for Albedo_10:
(28, 7633), (Start: 31 @7645 has 122 MA's), (Start: 51 @7669 has 8 MA's), (99, 7825), (102, 7840), (107, 7876),

Gene: Albright_10 Start: 7654, Stop: 7911, Start Num: 31
Candidate Starts for Albright_10:
(28, 7642), (Start: 31 @7654 has 122 MA's), (Start: 51 @7675 has 8 MA's), (99, 7831), (107, 7882),

Gene: Aledel_9 Start: 7261, Stop: 7548, Start Num: 31
Candidate Starts for Aledel_9:
(Start: 31 @7261 has 122 MA's), (75, 7360), (99, 7468), (110, 7540),

Gene: Amelia_12 Start: 8244, Stop: 8504, Start Num: 48
Candidate Starts for Amelia_12:
(Start: 44 @8235 has 1 MA's), (Start: 46 @8241 has 14 MA's), (Start: 48 @8244 has 2 MA's), (Start: 51 @8250 has 8 MA's), (59, 8274), (73, 8319), (92, 8382), (95, 8394),

Gene: Andrew_11 Start: 8034, Stop: 8288, Start Num: 51
Candidate Starts for Andrew_11:
(7, 7596), (8, 7704), (18, 7854), (21, 7905), (26, 7923), (38, 7998), (Start: 51 @8034 has 8 MA's), (59, 8058), (74, 8106), (87, 8160), (92, 8166), (95, 8178), (99, 8205),

Gene: AnnaLie_11 Start: 8000, Stop: 8320, Start Num: 31
Candidate Starts for AnnaLie_11:
(28, 7988), (Start: 31 @8000 has 122 MA's), (Start: 51 @8084 has 8 MA's), (98, 8237),

Gene: AppleCider_13 Start: 10140, Stop: 10409, Start Num: 31
Candidate Starts for AppleCider_13:
(28, 10128), (Start: 31 @10140 has 122 MA's), (Start: 49 @10158 has 7 MA's), (67, 10218), (75, 10239), (99, 10326),

Gene: Armstrong_9 Start: 7425, Stop: 7688, Start Num: 31
Candidate Starts for Armstrong_9:
(22, 7368), (Start: 31 @7425 has 122 MA's), (36, 7440), (Start: 51 @7455 has 8 MA's), (93, 7572), (103, 7632), (108, 7662),

Gene: Arroyo_11 Start: 8124, Stop: 8381, Start Num: 31
Candidate Starts for Arroyo_11:

(28, 8112), (Start: 31 @8124 has 122 MA's), (Start: 51 @8145 has 8 MA's), (98, 8298), (99, 8301), (102, 8316), (107, 8352),

Gene: Asapag_11 Start: 6824, Stop: 7048, Start Num: 60

Candidate Starts for Asapag_11:

(15, 6587), (17, 6602), (27, 6686), (47, 6782), (Start: 60 @6824 has 18 MA's), (72, 6863), (81, 6881), (94, 6938), (95, 6944), (99, 6971), (109, 7034),

Gene: AustinPowers_9 Start: 7262, Stop: 7549, Start Num: 31

Candidate Starts for AustinPowers_9:

(Start: 31 @7262 has 122 MA's), (75, 7361), (99, 7469),

Gene: AvGardian_10 Start: 7705, Stop: 7968, Start Num: 32

Candidate Starts for AvGardian_10:

(Start: 30 @7699 has 12 MA's), (Start: 32 @7705 has 1 MA's), (Start: 51 @7732 has 8 MA's),

Gene: Avani_12 Start: 6948, Stop: 7220, Start Num: 46

Candidate Starts for Avani_12:

(Start: 46 @6948 has 14 MA's), (64, 7008), (65, 7011), (76, 7041), (82, 7065), (88, 7095), (101, 7155),

Gene: Avocadoman_10 Start: 7712, Stop: 7969, Start Num: 31

Candidate Starts for Avocadoman_10:

(28, 7700), (Start: 31 @7712 has 122 MA's), (Start: 51 @7733 has 8 MA's), (99, 7889), (107, 7940),

Gene: BAjuniper_10 Start: 7595, Stop: 7852, Start Num: 30

Candidate Starts for BAjuniper_10:

(28, 7586), (Start: 30 @7595 has 12 MA's), (Start: 51 @7616 has 8 MA's), (98, 7769), (99, 7772), (106, 7817),

Gene: BENtherdunthat_11 Start: 6824, Stop: 7048, Start Num: 60

Candidate Starts for BENtherdunthat_11:

(15, 6587), (17, 6602), (27, 6686), (47, 6782), (Start: 60 @6824 has 18 MA's), (72, 6863), (81, 6881), (94, 6938), (95, 6944), (99, 6971), (109, 7034),

Gene: BabyDaisy_11 Start: 7870, Stop: 8133, Start Num: 30

Candidate Starts for BabyDaisy_11:

(28, 7861), (Start: 30 @7870 has 12 MA's),

Gene: BabyYoda_10 Start: 7899, Stop: 8162, Start Num: 30

Candidate Starts for BabyYoda_10:

(Start: 30 @7899 has 12 MA's), (35, 7911), (Start: 51 @7926 has 8 MA's), (93, 8043), (99, 8082), (102, 8097),

Gene: Bachaco_10 Start: 7813, Stop: 8049, Start Num: 51

Candidate Starts for Bachaco_10:

(28, 7774), (Start: 31 @7786 has 122 MA's), (Start: 51 @7813 has 8 MA's), (56, 7831), (93, 7930), (99, 7969),

Gene: BaileyBlu_10 Start: 6510, Stop: 6782, Start Num: 50

Candidate Starts for BaileyBlu_10:

(Start: 50 @6510 has 2 MA's), (53, 6525), (63, 6546), (66, 6570), (67, 6573), (70, 6579), (99, 6699),

Gene: Basilisk_11 Start: 8395, Stop: 8652, Start Num: 49

Candidate Starts for Basilisk_11:

(2, 7819), (7, 7933), (8, 8041), (10, 8086), (19, 8242), (Start: 49 @8395 has 7 MA's), (97, 8563),

Gene: Beethoven_13 Start: 10100, Stop: 10369, Start Num: 31

Candidate Starts for Beethoven_13:

(Start: 31 @10100 has 122 MA's), (62, 10151), (64, 10166), (75, 10199),

Gene: BelmontSKP_11 Start: 8000, Stop: 8320, Start Num: 31

Candidate Starts for BelmontSKP_11:

(28, 7988), (Start: 31 @8000 has 122 MA's), (Start: 51 @8084 has 8 MA's), (98, 8237),

Gene: Bennie_9 Start: 7245, Stop: 7514, Start Num: 31

Candidate Starts for Bennie_9:

(Start: 31 @7245 has 122 MA's), (Start: 49 @7263 has 7 MA's), (75, 7344), (91, 7389), (99, 7431),

Gene: Bernstein_9 Start: 7485, Stop: 7748, Start Num: 31

Candidate Starts for Bernstein_9:

(22, 7428), (Start: 31 @7485 has 122 MA's), (36, 7500), (Start: 51 @7515 has 8 MA's), (93, 7632), (103, 7692), (108, 7722),

Gene: BigMack_9 Start: 7245, Stop: 7514, Start Num: 31

Candidate Starts for BigMack_9:

(Start: 31 @7245 has 122 MA's), (64, 7311), (75, 7344), (99, 7431), (110, 7503),

Gene: Bipper_17 Start: 11835, Stop: 12083, Start Num: 57

Candidate Starts for Bipper_17:

(34, 11778), (Start: 57 @11835 has 4 MA's), (86, 11934), (89, 11952), (91, 11955), (100, 12000),

Gene: Blarby_13 Start: 7472, Stop: 7744, Start Num: 46

Candidate Starts for Blarby_13:

(Start: 46 @7472 has 14 MA's), (64, 7532), (65, 7535), (76, 7565), (82, 7589), (88, 7619), (101, 7679),

Gene: Bodacious_9 Start: 7243, Stop: 7512, Start Num: 31

Candidate Starts for Bodacious_9:

(Start: 31 @7243 has 122 MA's), (67, 7321), (75, 7342), (99, 7429),

Gene: Brahms_9 Start: 7425, Stop: 7688, Start Num: 31

Candidate Starts for Brahms_9:

(22, 7368), (Start: 31 @7425 has 122 MA's), (36, 7440), (Start: 51 @7455 has 8 MA's), (93, 7572), (103, 7632), (108, 7662),

Gene: BrotherBLo_13 Start: 10107, Stop: 10376, Start Num: 31

Candidate Starts for BrotherBLo_13:

(Start: 31 @10107 has 122 MA's), (62, 10158), (64, 10173), (75, 10206),

Gene: Brynnie_11 Start: 8207, Stop: 8464, Start Num: 49

Candidate Starts for Brynnie_11:

(2, 7631), (7, 7745), (8, 7853), (10, 7898), (19, 8054), (Start: 49 @8207 has 7 MA's), (79, 8297), (97, 8375),

Gene: BubbaBear_10 Start: 7645, Stop: 7905, Start Num: 31

Candidate Starts for BubbaBear_10:

(28, 7633), (Start: 31 @7645 has 122 MA's), (Start: 51 @7669 has 8 MA's), (99, 7825), (102, 7840),

Gene: Budski_11 Start: 6829, Stop: 7053, Start Num: 60

Candidate Starts for Budski_11:

(47, 6787), (Start: 60 @6829 has 18 MA's), (72, 6868), (81, 6886), (94, 6943), (95, 6949), (99, 6976), (109, 7039),

Gene: Buldak_10 Start: 7930, Stop: 8196, Start Num: 31

Candidate Starts for Buldak_10:

(28, 7918), (Start: 31 @7930 has 122 MA's), (64, 8002), (75, 8035), (93, 8077),

Gene: Burritobowl_10 Start: 7681, Stop: 7938, Start Num: 31

Candidate Starts for Burritobowl_10:

(28, 7669), (Start: 31 @7681 has 122 MA's), (Start: 51 @7702 has 8 MA's), (99, 7858), (107, 7909),

Gene: CallieOMalley_13 Start: 10140, Stop: 10409, Start Num: 31

Candidate Starts for CallieOMalley_13:

(28, 10128), (Start: 31 @10140 has 122 MA's), (Start: 49 @10158 has 7 MA's), (67, 10218), (75, 10239), (99, 10326),

Gene: CallinAllBarbz_10 Start: 6520, Stop: 6792, Start Num: 50

Candidate Starts for CallinAllBarbz_10:

(Start: 50 @6520 has 2 MA's), (53, 6535), (90, 6667), (99, 6709),

Gene: Canowicakte_13 Start: 10175, Stop: 10444, Start Num: 31

Candidate Starts for Canowicakte_13:

(28, 10163), (Start: 31 @10175 has 122 MA's), (Start: 49 @10193 has 7 MA's), (67, 10253), (75, 10274), (99, 10361),

Gene: Carpal_13 Start: 10107, Stop: 10376, Start Num: 31

Candidate Starts for Carpal_13:

(Start: 31 @10107 has 122 MA's), (62, 10158), (64, 10173), (75, 10206),

Gene: Cashington_10 Start: 7671, Stop: 7928, Start Num: 31

Candidate Starts for Cashington_10:

(28, 7659), (Start: 31 @7671 has 122 MA's), (Start: 51 @7692 has 8 MA's), (99, 7848), (107, 7899),

Gene: Celaena_10 Start: 7723, Stop: 7986, Start Num: 31

Candidate Starts for Celaena_10:

(28, 7711), (Start: 31 @7723 has 122 MA's), (Start: 51 @7750 has 8 MA's), (56, 7768), (93, 7867), (99, 7906),

Gene: Che9d_12 Start: 6957, Stop: 7229, Start Num: 46

Candidate Starts for Che9d_12:

(Start: 46 @6957 has 14 MA's), (64, 7017), (65, 7020), (76, 7050), (82, 7074), (88, 7104), (101, 7164),

Gene: CheeseTouch_11 Start: 6829, Stop: 7053, Start Num: 60

Candidate Starts for CheeseTouch_11:

(47, 6787), (Start: 60 @6829 has 18 MA's), (72, 6868), (81, 6886), (94, 6943), (95, 6949), (99, 6976), (109, 7039),

Gene: ChewChew_9 Start: 7242, Stop: 7511, Start Num: 31

Candidate Starts for ChewChew_9:

(Start: 31 @7242 has 122 MA's), (69, 7323), (75, 7341), (91, 7386), (99, 7428),

Gene: Chickaboom_10 Start: 7752, Stop: 8009, Start Num: 49
Candidate Starts for Chickaboom_10:
(7, 7290), (8, 7398), (10, 7443), (19, 7599), (Start: 49 @7752 has 7 MA's), (97, 7920),

Gene: ChiliPepper_10 Start: 7882, Stop: 8139, Start Num: 31
Candidate Starts for ChiliPepper_10:
(Start: 31 @7882 has 122 MA's), (64, 7945), (99, 8059), (106, 8104),

Gene: Cholula_13 Start: 10152, Stop: 10421, Start Num: 31
Candidate Starts for Cholula_13:
(Start: 31 @10152 has 122 MA's), (62, 10203), (64, 10218), (75, 10251),

Gene: Chridison_9 Start: 7262, Stop: 7549, Start Num: 31
Candidate Starts for Chridison_9:
(Start: 31 @7262 has 122 MA's), (75, 7361), (99, 7469),

Gene: Christian_9 Start: 7243, Stop: 7512, Start Num: 31
Candidate Starts for Christian_9:
(Start: 31 @7243 has 122 MA's), (67, 7321), (75, 7342), (99, 7429),

Gene: Clayda5_9 Start: 7425, Stop: 7688, Start Num: 31
Candidate Starts for Clayda5_9:
(22, 7368), (Start: 31 @7425 has 122 MA's), (36, 7440), (Start: 51 @7455 has 8 MA's), (93, 7572),
(103, 7632), (108, 7662),

Gene: Coltrane_9 Start: 7425, Stop: 7688, Start Num: 31
Candidate Starts for Coltrane_9:
(22, 7368), (Start: 31 @7425 has 122 MA's), (36, 7440), (Start: 51 @7455 has 8 MA's), (93, 7572),
(103, 7632), (108, 7662),

Gene: Coral_11 Start: 8080, Stop: 8343, Start Num: 46
Candidate Starts for Coral_11:
(Start: 44 @8074 has 1 MA's), (Start: 46 @8080 has 14 MA's), (Start: 48 @8083 has 2 MA's), (Start:
51 @8089 has 8 MA's), (59, 8113), (73, 8158), (92, 8221), (95, 8233),

Gene: Cote_12 Start: 8241, Stop: 8504, Start Num: 46
Candidate Starts for Cote_12:
(Start: 44 @8235 has 1 MA's), (Start: 46 @8241 has 14 MA's), (Start: 48 @8244 has 2 MA's), (Start:
51 @8250 has 8 MA's), (59, 8274), (73, 8319), (92, 8382), (95, 8394),

Gene: Cracklewink_17 Start: 11835, Stop: 12083, Start Num: 57
Candidate Starts for Cracklewink_17:
(34, 11778), (Start: 57 @11835 has 4 MA's), (89, 11952), (91, 11955), (100, 12000),

Gene: CristinaYang_9 Start: 7243, Stop: 7512, Start Num: 31
Candidate Starts for CristinaYang_9:
(Start: 31 @7243 has 122 MA's), (67, 7321), (75, 7342), (99, 7429),

Gene: CroZenni_10 Start: 7654, Stop: 7911, Start Num: 31
Candidate Starts for CroZenni_10:
(28, 7642), (Start: 31 @7654 has 122 MA's), (Start: 51 @7675 has 8 MA's), (98, 7828), (99, 7831),
(102, 7846), (107, 7882),

Gene: Daiboju_9 Start: 7263, Stop: 7550, Start Num: 31

Candidate Starts for Daiboju_9:

(Start: 31 @7263 has 122 MA's), (69, 7344), (75, 7362), (99, 7470), (110, 7542),

Gene: Daob_12 Start: 8238, Stop: 8507, Start Num: 44

Candidate Starts for Daob_12:

(Start: 44 @8238 has 1 MA's), (Start: 46 @8244 has 14 MA's), (Start: 48 @8247 has 2 MA's), (Start: 51 @8253 has 8 MA's), (59, 8277), (73, 8322), (92, 8385), (95, 8397),

Gene: Demsculpinboyz_12 Start: 6948, Stop: 7220, Start Num: 46

Candidate Starts for Demsculpinboyz_12:

(Start: 46 @6948 has 14 MA's), (64, 7008), (65, 7011), (76, 7041), (82, 7065), (88, 7095), (101, 7155),

Gene: DickRichards_10 Start: 8148, Stop: 8405, Start Num: 31

Candidate Starts for DickRichards_10:

(28, 8136), (Start: 31 @8148 has 122 MA's), (Start: 51 @8169 has 8 MA's), (98, 8322), (99, 8325), (102, 8340), (107, 8376),

Gene: Didgeridoo_11 Start: 7870, Stop: 8133, Start Num: 30

Candidate Starts for Didgeridoo_11:

(28, 7861), (Start: 30 @7870 has 12 MA's),

Gene: Dino_13 Start: 10106, Stop: 10375, Start Num: 31

Candidate Starts for Dino_13:

(Start: 31 @10106 has 122 MA's), (62, 10157), (64, 10172), (75, 10205),

Gene: DirtyBubble_10 Start: 7907, Stop: 8170, Start Num: 30

Candidate Starts for DirtyBubble_10:

(Start: 30 @7907 has 12 MA's), (35, 7919), (Start: 51 @7934 has 8 MA's), (93, 8051), (99, 8090), (102, 8105),

Gene: Dismas_10 Start: 7882, Stop: 8139, Start Num: 31

Candidate Starts for Dismas_10:

(Start: 31 @7882 has 122 MA's), (64, 7945), (99, 8059), (106, 8104),

Gene: Doobus_10 Start: 7885, Stop: 8142, Start Num: 31

Candidate Starts for Doobus_10:

(28, 7873), (Start: 31 @7885 has 122 MA's), (Start: 51 @7906 has 8 MA's), (99, 8062), (107, 8113),

Gene: DrRobert_9 Start: 7243, Stop: 7512, Start Num: 31

Candidate Starts for DrRobert_9:

(Start: 31 @7243 has 122 MA's), (75, 7342), (99, 7429),

Gene: DreamTeam_9 Start: 7289, Stop: 7579, Start Num: 31

Candidate Starts for DreamTeam_9:

(Start: 31 @7289 has 122 MA's), (75, 7388), (85, 7427), (99, 7496),

Gene: Eden_9 Start: 7514, Stop: 7780, Start Num: 31

Candidate Starts for Eden_9:

(22, 7457), (Start: 31 @7514 has 122 MA's), (Start: 51 @7547 has 8 MA's), (67, 7601), (108, 7754),

Gene: Eesa_11 Start: 8248, Stop: 8502, Start Num: 51

Candidate Starts for Eesa_11:

(5, 7771), (8, 7915), (21, 8119), (38, 8212), (42, 8230), (Start: 51 @8248 has 8 MA's), (59, 8272), (94, 8386), (95, 8392), (99, 8419),

Gene: Elva_11 Start: 7965, Stop: 8225, Start Num: 33

Candidate Starts for Elva_11:

(Start: 33 @7965 has 1 MA's), (Start: 51 @7989 has 8 MA's), (95, 8118),

Gene: EstebanJulior_9 Start: 7287, Stop: 7556, Start Num: 31

Candidate Starts for EstebanJulior_9:

(Start: 31 @7287 has 122 MA's), (75, 7386), (78, 7392), (99, 7473),

Gene: Eula_10 Start: 7652, Stop: 7912, Start Num: 31

Candidate Starts for Eula_10:

(28, 7640), (Start: 31 @7652 has 122 MA's), (Start: 51 @7676 has 8 MA's), (99, 7832), (102, 7847),

Gene: Eunoia_9 Start: 7261, Stop: 7548, Start Num: 31

Candidate Starts for Eunoia_9:

(Start: 31 @7261 has 122 MA's), (75, 7360), (99, 7468), (110, 7540),

Gene: Finalfrontier_11 Start: 8160, Stop: 8423, Start Num: 30

Candidate Starts for Finalfrontier_11:

(28, 8151), (Start: 30 @8160 has 12 MA's), (Start: 51 @8187 has 8 MA's), (99, 8343), (102, 8358),

Gene: FlameThrower_10 Start: 7611, Stop: 7874, Start Num: 31

Candidate Starts for FlameThrower_10:

(28, 7599), (Start: 31 @7611 has 122 MA's), (Start: 51 @7638 has 8 MA's), (56, 7656), (93, 7755), (99, 7794),

Gene: Fluke_13 Start: 10148, Stop: 10417, Start Num: 31

Candidate Starts for Fluke_13:

(Start: 31 @10148 has 122 MA's), (62, 10199), (64, 10214), (75, 10247), (99, 10334),

Gene: Franklin22_9 Start: 7495, Stop: 7761, Start Num: 31

Candidate Starts for Franklin22_9:

(Start: 31 @7495 has 122 MA's), (Start: 51 @7528 has 8 MA's), (99, 7681), (108, 7735),

Gene: Frickyeah_11 Start: 6824, Stop: 7048, Start Num: 60

Candidate Starts for Frickyeah_11:

(15, 6587), (17, 6602), (27, 6686), (47, 6782), (Start: 60 @6824 has 18 MA's), (72, 6863), (81, 6881), (94, 6938), (95, 6944), (99, 6971), (109, 7034),

Gene: Fryberger_43 Start: 16293, Stop: 16577, Start Num: 41

Candidate Starts for Fryberger_43:

(39, 16287), (Start: 41 @16293 has 6 MA's), (61, 16350), (68, 16377), (93, 16458), (94, 16464),

Gene: Gack_9 Start: 7565, Stop: 7828, Start Num: 31

Candidate Starts for Gack_9:

(22, 7508), (Start: 31 @7565 has 122 MA's), (Start: 51 @7595 has 8 MA's), (59, 7619), (99, 7748), (108, 7802),

Gene: Galaxy_11 Start: 8078, Stop: 8335, Start Num: 49

Candidate Starts for Galaxy_11:

(42, 8060), (Start: 49 @8078 has 7 MA's), (98, 8249),

Gene: Getalong_11 Start: 6824, Stop: 7048, Start Num: 60

Candidate Starts for Getalong_11:

(15, 6587), (17, 6602), (27, 6686), (Start: 60 @6824 has 18 MA's), (72, 6863), (81, 6881), (94, 6938), (95, 6944), (99, 6971), (109, 7034),

Gene: Gisselle_9 Start: 7289, Stop: 7579, Start Num: 31

Candidate Starts for Gisselle_9:

(Start: 31 @7289 has 122 MA's), (75, 7388), (85, 7427), (99, 7496),

Gene: Glenn_13 Start: 10158, Stop: 10427, Start Num: 31

Candidate Starts for Glenn_13:

(Start: 31 @10158 has 122 MA's), (62, 10209), (64, 10224), (75, 10257),

Gene: GreenHearts_13 Start: 10230, Stop: 10520, Start Num: 31

Candidate Starts for GreenHearts_13:

(Start: 31 @10230 has 122 MA's), (Start: 51 @10254 has 8 MA's), (75, 10329), (79, 10338), (82, 10356), (99, 10437),

Gene: Greenhouse_13 Start: 10155, Stop: 10445, Start Num: 31

Candidate Starts for Greenhouse_13:

(Start: 31 @10155 has 122 MA's), (Start: 51 @10179 has 8 MA's), (64, 10221), (75, 10254), (79, 10263), (82, 10281), (99, 10362),

Gene: Guey18_48 Start: 17486, Stop: 17770, Start Num: 41

Candidate Starts for Guey18_48:

(39, 17480), (Start: 41 @17486 has 6 MA's), (61, 17543), (68, 17570), (93, 17651), (94, 17657),

Gene: HannahPhantana_12 Start: 8253, Stop: 8507, Start Num: 51

Candidate Starts for HannahPhantana_12:

(Start: 44 @8238 has 1 MA's), (Start: 46 @8244 has 14 MA's), (Start: 48 @8247 has 2 MA's), (Start: 51 @8253 has 8 MA's), (59, 8277), (73, 8322), (92, 8385), (95, 8397),

Gene: HeadNerd_9 Start: 7245, Stop: 7514, Start Num: 31

Candidate Starts for HeadNerd_9:

(Start: 31 @7245 has 122 MA's), (Start: 49 @7263 has 7 MA's), (75, 7344), (91, 7389), (99, 7431),

Gene: Herb_9 Start: 7263, Stop: 7550, Start Num: 31

Candidate Starts for Herb_9:

(Start: 31 @7263 has 122 MA's), (69, 7344), (75, 7362), (99, 7470), (110, 7542),

Gene: Hilltopfarm_17 Start: 11779, Stop: 12027, Start Num: 57

Candidate Starts for Hilltopfarm_17:

(34, 11722), (Start: 57 @11779 has 4 MA's), (71, 11821), (89, 11896), (100, 11944), (108, 11995), (110, 12013),

Gene: Holliday_11 Start: 6829, Stop: 7053, Start Num: 60

Candidate Starts for Holliday_11:

(47, 6787), (Start: 60 @6829 has 18 MA's), (72, 6868), (81, 6886), (94, 6943), (95, 6949), (99, 6976), (109, 7039),

Gene: Horus_11 Start: 6824, Stop: 7048, Start Num: 60

Candidate Starts for Horus_11:

(15, 6587), (17, 6602), (27, 6686), (47, 6782), (Start: 60 @6824 has 18 MA's), (72, 6863), (81, 6881), (94, 6938), (95, 6944), (99, 6971), (109, 7034),

Gene: Huckleberry_9 Start: 7245, Stop: 7514, Start Num: 31

Candidate Starts for Huckleberry_9:

(Start: 31 @7245 has 122 MA's), (Start: 49 @7263 has 7 MA's), (75, 7344), (91, 7389), (99, 7431),

Gene: HunterDalle_9 Start: 7261, Stop: 7548, Start Num: 31

Candidate Starts for HunterDalle_9:

(Start: 31 @7261 has 122 MA's), (75, 7360), (99, 7468),

Gene: Huntingdon_13 Start: 10141, Stop: 10431, Start Num: 31

Candidate Starts for Huntingdon_13:

(3, 9655), (6, 9742), (9, 9880), (Start: 31 @10141 has 122 MA's), (Start: 51 @10165 has 8 MA's), (75, 10240), (82, 10267), (99, 10348),

Gene: Icarian_11 Start: 7889, Stop: 8152, Start Num: 32

Candidate Starts for Icarian_11:

(Start: 32 @7889 has 1 MA's), (Start: 51 @7916 has 8 MA's), (99, 8072), (102, 8087),

Gene: Immaculata_13 Start: 10152, Stop: 10421, Start Num: 31

Candidate Starts for Immaculata_13:

(Start: 31 @10152 has 122 MA's), (62, 10203), (64, 10218), (75, 10251),

Gene: IndyLu_10 Start: 7694, Stop: 7957, Start Num: 30

Candidate Starts for IndyLu_10:

(28, 7685), (Start: 30 @7694 has 12 MA's),

Gene: Jabbawokkie_13 Start: 7471, Stop: 7743, Start Num: 46

Candidate Starts for Jabbawokkie_13:

(Start: 46 @7471 has 14 MA's), (64, 7531), (65, 7534), (76, 7564), (82, 7588), (88, 7618), (101, 7678),

Gene: Jamun_11 Start: 8419, Stop: 8676, Start Num: 49

Candidate Starts for Jamun_11:

(10, 8110), (19, 8266), (Start: 49 @8419 has 7 MA's), (97, 8587),

Gene: Joann_13 Start: 10133, Stop: 10423, Start Num: 31

Candidate Starts for Joann_13:

(3, 9647), (4, 9689), (6, 9734), (Start: 31 @10133 has 122 MA's), (Start: 51 @10157 has 8 MA's), (75, 10232), (79, 10241), (82, 10259), (99, 10340),

Gene: Johnathan_10 Start: 7654, Stop: 7911, Start Num: 31

Candidate Starts for Johnathan_10:

(28, 7642), (Start: 31 @7654 has 122 MA's), (Start: 51 @7675 has 8 MA's), (99, 7831), (107, 7882),

Gene: Jovita_10 Start: 7753, Stop: 8013, Start Num: 31

Candidate Starts for Jovita_10:

(28, 7741), (Start: 31 @7753 has 122 MA's), (Start: 51 @7777 has 8 MA's), (99, 7933), (102, 7948),

Gene: Jumboset_13 Start: 10101, Stop: 10370, Start Num: 31

Candidate Starts for Jumboset_13:

(Start: 31 @10101 has 122 MA's), (62, 10152), (64, 10167), (75, 10200),

Gene: Juno112_10 Start: 7656, Stop: 7910, Start Num: 51

Candidate Starts for Juno112_10:

(11, 7398), (13, 7422), (14, 7458), (19, 7506), (38, 7620), (Start: 51 @7656 has 8 MA's), (59, 7680), (74, 7728), (78, 7737), (87, 7782), (95, 7800), (99, 7827),

Gene: KHumphrey_10 Start: 7655, Stop: 7909, Start Num: 51

Candidate Starts for KHumphrey_10:

(11, 7397), (13, 7421), (14, 7457), (19, 7505), (38, 7619), (Start: 51 @7655 has 8 MA's), (59, 7679), (74, 7727), (78, 7736), (87, 7781), (92, 7787), (95, 7799), (99, 7826),

Gene: Kalizoi_13 Start: 10100, Stop: 10369, Start Num: 31

Candidate Starts for Kalizoi_13:

(Start: 31 @10100 has 122 MA's), (62, 10151), (64, 10166), (75, 10199),

Gene: Kamaru_11 Start: 6829, Stop: 7053, Start Num: 60

Candidate Starts for Kamaru_11:

(47, 6787), (Start: 60 @6829 has 18 MA's), (72, 6868), (81, 6886), (94, 6943), (95, 6949), (99, 6976), (109, 7039),

Gene: Katzastrophic_10 Start: 7786, Stop: 8049, Start Num: 31

Candidate Starts for Katzastrophic_10:

(28, 7774), (Start: 31 @7786 has 122 MA's), (Start: 51 @7813 has 8 MA's), (56, 7831), (93, 7930), (99, 7969),

Gene: Keelan_41 Start: 16268, Stop: 16552, Start Num: 41

Candidate Starts for Keelan_41:

(Start: 41 @16268 has 6 MA's), (61, 16325), (68, 16352), (93, 16433), (94, 16439),

Gene: Kenna_11 Start: 6824, Stop: 7048, Start Num: 60

Candidate Starts for Kenna_11:

(17, 6602), (27, 6686), (47, 6782), (Start: 60 @6824 has 18 MA's), (72, 6863), (81, 6881), (94, 6938), (95, 6944), (99, 6971),

Gene: Kenzers_10 Start: 7668, Stop: 7928, Start Num: 31

Candidate Starts for Kenzers_10:

(28, 7656), (Start: 31 @7668 has 122 MA's), (Start: 51 @7692 has 8 MA's), (99, 7848), (102, 7863), (107, 7899),

Gene: Kepler_11 Start: 8079, Stop: 8342, Start Num: 46

Candidate Starts for Kepler_11:

(Start: 44 @8073 has 1 MA's), (Start: 46 @8079 has 14 MA's), (Start: 48 @8082 has 2 MA's), (Start: 51 @8088 has 8 MA's), (73, 8157), (92, 8220), (95, 8232),

Gene: Kieran_10 Start: 7885, Stop: 8142, Start Num: 31

Candidate Starts for Kieran_10:

(Start: 31 @7885 has 122 MA's), (64, 7948), (99, 8062), (106, 8107),

Gene: KingBob_9 Start: 7263, Stop: 7550, Start Num: 31

Candidate Starts for KingBob_9:

(Start: 31 @7263 has 122 MA's), (69, 7344), (75, 7362), (99, 7470), (110, 7542),

Gene: Kittykat_9 Start: 7286, Stop: 7555, Start Num: 31

Candidate Starts for Kittykat_9:

(Start: 31 @7286 has 122 MA's), (75, 7385), (91, 7430), (99, 7472), (104, 7499),

Gene: Korra_13 Start: 10106, Stop: 10375, Start Num: 31

Candidate Starts for Korra_13:

(Start: 31 @10106 has 122 MA's), (62, 10157), (64, 10172), (75, 10205),

Gene: Kuleana_11 Start: 8039, Stop: 8302, Start Num: 46

Candidate Starts for Kuleana_11:

(Start: 44 @8033 has 1 MA's), (Start: 46 @8039 has 14 MA's), (Start: 51 @8048 has 8 MA's), (58, 8069), (59, 8072), (74, 8120), (92, 8180), (95, 8192), (99, 8219),

Gene: Lahqtemish_10 Start: 7738, Stop: 8001, Start Num: 30

Candidate Starts for Lahqtemish_10:

(28, 7729), (Start: 30 @7738 has 12 MA's), (64, 7807),

Gene: Lakshmi_13 Start: 10160, Stop: 10450, Start Num: 31

Candidate Starts for Lakshmi_13:

(Start: 31 @10160 has 122 MA's), (Start: 51 @10184 has 8 MA's), (75, 10259), (79, 10268), (82, 10286), (99, 10367),

Gene: Lasagna_9 Start: 7243, Stop: 7512, Start Num: 31

Candidate Starts for Lasagna_9:

(Start: 31 @7243 has 122 MA's), (67, 7321), (75, 7342), (99, 7429),

Gene: Lennox_9 Start: 7243, Stop: 7512, Start Num: 31

Candidate Starts for Lennox_9:

(Start: 31 @7243 has 122 MA's), (75, 7342), (91, 7387), (99, 7429),

Gene: Leona_10 Start: 7706, Stop: 7960, Start Num: 51

Candidate Starts for Leona_10:

(11, 7448), (13, 7472), (14, 7508), (19, 7556), (37, 7664), (38, 7670), (Start: 51 @7706 has 8 MA's), (59, 7730), (74, 7778), (78, 7787), (87, 7832), (95, 7850), (99, 7877),

Gene: Leroy_11 Start: 6825, Stop: 7049, Start Num: 60

Candidate Starts for Leroy_11:

(15, 6588), (17, 6603), (27, 6687), (47, 6783), (Start: 60 @6825 has 18 MA's), (72, 6864), (81, 6882), (94, 6939), (95, 6945), (99, 6972), (109, 7035),

Gene: LilStuart_9 Start: 7243, Stop: 7512, Start Num: 31

Candidate Starts for LilStuart_9:

(Start: 31 @7243 has 122 MA's), (67, 7321), (75, 7342), (99, 7429),

Gene: LimaBean_10 Start: 7654, Stop: 7911, Start Num: 31

Candidate Starts for LimaBean_10:

(28, 7642), (Start: 31 @7654 has 122 MA's), (Start: 51 @7675 has 8 MA's), (99, 7831), (107, 7882),

Gene: LitninMcQueen_11 Start: 6829, Stop: 7053, Start Num: 60

Candidate Starts for LitninMcQueen_11:

(47, 6787), (Start: 60 @6829 has 18 MA's), (72, 6868), (81, 6886), (94, 6943), (95, 6949), (99, 6976), (109, 7039),

Gene: Litotes_13 Start: 10128, Stop: 10397, Start Num: 31

Candidate Starts for Litotes_13:

(28, 10116), (Start: 31 @10128 has 122 MA's), (Start: 49 @10146 has 7 MA's), (62, 10179), (75, 10227), (91, 10272), (99, 10314),

Gene: LittleTokyo_11 Start: 7988, Stop: 8242, Start Num: 51

Candidate Starts for LittleTokyo_11:

(Start: 51 @7988 has 8 MA's), (73, 8057), (97, 8153), (99, 8159),

Gene: Loviatar_18 Start: 7923, Stop: 8231, Start Num: 24

Candidate Starts for Loviatar_18:

(20, 7911), (24, 7923), (64, 8037), (99, 8151),

Gene: Lucy_9 Start: 7234, Stop: 7503, Start Num: 31

Candidate Starts for Lucy_9:

(Start: 31 @7234 has 122 MA's), (Start: 49 @7252 has 7 MA's), (75, 7333), (91, 7378), (99, 7420),

Gene: Lunar_12 Start: 8244, Stop: 8504, Start Num: 48

Candidate Starts for Lunar_12:

(Start: 44 @8235 has 1 MA's), (Start: 46 @8241 has 14 MA's), (Start: 48 @8244 has 2 MA's), (Start: 51 @8250 has 8 MA's), (59, 8274), (73, 8319), (92, 8382), (95, 8394),

Gene: Lutum_11 Start: 6824, Stop: 7048, Start Num: 60

Candidate Starts for Lutum_11:

(17, 6602), (27, 6686), (47, 6782), (Start: 60 @6824 has 18 MA's), (72, 6863), (81, 6881), (94, 6938), (95, 6944), (99, 6971),

Gene: Lynlen_10 Start: 7668, Stop: 7928, Start Num: 31

Candidate Starts for Lynlen_10:

(28, 7656), (Start: 31 @7668 has 122 MA's), (Start: 51 @7692 has 8 MA's), (99, 7848), (102, 7863), (107, 7899),

Gene: Makoto_9 Start: 7243, Stop: 7512, Start Num: 31

Candidate Starts for Makoto_9:

(Start: 31 @7243 has 122 MA's), (75, 7342), (91, 7387), (99, 7429),

Gene: Malisha_11 Start: 7874, Stop: 8098, Start Num: 60

Candidate Starts for Malisha_11:

(Start: 60 @7874 has 18 MA's), (81, 7931), (94, 7988), (95, 7994), (99, 8021), (109, 8084),

Gene: MamaPearl_9 Start: 7287, Stop: 7556, Start Num: 31

Candidate Starts for MamaPearl_9:

(Start: 31 @7287 has 122 MA's), (75, 7386), (78, 7392), (99, 7473),

Gene: Maria1952_9 Start: 7263, Stop: 7550, Start Num: 31

Candidate Starts for Maria1952_9:

(Start: 31 @7263 has 122 MA's), (69, 7344), (75, 7362), (99, 7470), (110, 7542),

Gene: MeganNoll_13 Start: 10158, Stop: 10427, Start Num: 31

Candidate Starts for MeganNoll_13:

(Start: 31 @10158 has 122 MA's), (62, 10209), (64, 10224), (75, 10257),

Gene: Melons_12 Start: 8241, Stop: 8504, Start Num: 46

Candidate Starts for Melons_12:

(Start: 44 @8235 has 1 MA's), (Start: 46 @8241 has 14 MA's), (Start: 48 @8244 has 2 MA's), (Start: 51 @8250 has 8 MA's), (59, 8274), (73, 8319), (92, 8382), (95, 8394),

Gene: Misaeng_13 Start: 10206, Stop: 10496, Start Num: 31

Candidate Starts for Misaeng_13:

(9, 9945), (Start: 31 @10206 has 122 MA's), (Start: 51 @10230 has 8 MA's), (64, 10272), (75, 10305), (82, 10332), (99, 10413),

Gene: Moki_9 Start: 7245, Stop: 7514, Start Num: 31

Candidate Starts for Moki_9:

(Start: 31 @7245 has 122 MA's), (Start: 49 @7263 has 7 MA's), (75, 7344), (91, 7389), (99, 7431),

Gene: MrGloopy_13 Start: 10091, Stop: 10360, Start Num: 31

Candidate Starts for MrGloopy_13:

(Start: 31 @10091 has 122 MA's), (62, 10142), (64, 10157), (75, 10190),

Gene: Nancia_9 Start: 7243, Stop: 7512, Start Num: 31

Candidate Starts for Nancia_9:

(Start: 31 @7243 has 122 MA's), (67, 7321), (75, 7342), (99, 7429),

Gene: Nesbitt_10 Start: 7604, Stop: 7855, Start Num: 45

Candidate Starts for Nesbitt_10:

(23, 7502), (Start: 45 @7604 has 2 MA's), (54, 7634), (80, 7709), (92, 7736), (99, 7775),

Gene: Nicky22_11 Start: 8102, Stop: 8359, Start Num: 31

Candidate Starts for Nicky22_11:

(28, 8090), (Start: 31 @8102 has 122 MA's), (Start: 51 @8123 has 8 MA's), (99, 8279), (102, 8294), (107, 8330),

Gene: Nubia_13 Start: 10120, Stop: 10410, Start Num: 31

Candidate Starts for Nubia_13:

(28, 10108), (Start: 31 @10120 has 122 MA's), (Start: 51 @10144 has 8 MA's), (64, 10186), (75, 10219), (79, 10228), (82, 10246), (99, 10327),

Gene: OMalley_9 Start: 7261, Stop: 7548, Start Num: 31

Candidate Starts for OMalley_9:

(Start: 31 @7261 has 122 MA's), (75, 7360), (99, 7468), (110, 7540),

Gene: Orcanus_11 Start: 8038, Stop: 8292, Start Num: 51

Candidate Starts for Orcanus_11:

(21, 7909), (25, 7924), (38, 8002), (42, 8020), (Start: 51 @8038 has 8 MA's), (59, 8062), (94, 8176), (95, 8182), (100, 8212),

Gene: OurGirlNessie_9 Start: 7234, Stop: 7503, Start Num: 31

Candidate Starts for OurGirlNessie_9:

(Start: 31 @7234 has 122 MA's), (67, 7312), (75, 7333), (99, 7420),

Gene: Oxynfrius_13 Start: 10133, Stop: 10423, Start Num: 31

Candidate Starts for Oxynfrius_13:

(Start: 31 @10133 has 122 MA's), (Start: 51 @10157 has 8 MA's), (75, 10232), (79, 10241), (82, 10259), (99, 10340),

Gene: PartyCup_13 Start: 10175, Stop: 10444, Start Num: 31

Candidate Starts for PartyCup_13:

(28, 10163), (Start: 31 @10175 has 122 MA's), (Start: 49 @10193 has 7 MA's), (62, 10226), (75, 10274), (91, 10319), (99, 10361),

Gene: Periwinkle_11 Start: 6824, Stop: 7048, Start Num: 60

Candidate Starts for Periwinkle_11:

(15, 6587), (17, 6602), (27, 6686), (47, 6782), (Start: 60 @6824 has 18 MA's), (72, 6863), (81, 6881), (94, 6938), (95, 6944), (99, 6971), (109, 7034),

Gene: Phabuloso_11 Start: 6829, Stop: 7053, Start Num: 60

Candidate Starts for Phabuloso_11:

(47, 6787), (Start: 60 @6829 has 18 MA's), (72, 6868), (81, 6886), (94, 6943), (95, 6949), (99, 6976), (109, 7039),

Gene: Phisb_10 Start: 7645, Stop: 7905, Start Num: 31

Candidate Starts for Phisb_10:

(28, 7633), (Start: 31 @7645 has 122 MA's), (Start: 51 @7669 has 8 MA's), (99, 7825), (102, 7840), (107, 7876),

Gene: Phistory_11 Start: 6813, Stop: 7037, Start Num: 60

Candidate Starts for Phistory_11:

(17, 6591), (27, 6675), (47, 6771), (Start: 60 @6813 has 18 MA's), (72, 6852), (81, 6870), (94, 6927), (95, 6933), (99, 6960), (109, 7023),

Gene: PhluffyCoco_10 Start: 7619, Stop: 7909, Start Num: 38

Candidate Starts for PhluffyCoco_10:

(38, 7619), (Start: 51 @7655 has 8 MA's), (59, 7679), (73, 7724), (78, 7736), (87, 7781), (92, 7787), (95, 7799), (99, 7826),

Gene: PinkFriday_9 Start: 7264, Stop: 7551, Start Num: 31

Candidate Starts for PinkFriday_9:

(Start: 31 @7264 has 122 MA's), (62, 7315), (75, 7363), (99, 7471), (110, 7543),

Gene: PitaDog_9 Start: 7234, Stop: 7503, Start Num: 31

Candidate Starts for PitaDog_9:

(Start: 31 @7234 has 122 MA's), (75, 7333), (91, 7378), (99, 7420),

Gene: Polka_11 Start: 8080, Stop: 8343, Start Num: 46

Candidate Starts for Polka_11:

(Start: 44 @8074 has 1 MA's), (Start: 46 @8080 has 14 MA's), (Start: 48 @8083 has 2 MA's), (Start: 51 @8089 has 8 MA's), (59, 8113), (73, 8158), (92, 8221), (95, 8233),

Gene: Potatoes_13 Start: 10152, Stop: 10421, Start Num: 31

Candidate Starts for Potatoes_13:

(Start: 31 @10152 has 122 MA's), (62, 10203), (64, 10218), (75, 10251),

Gene: Preamble_9 Start: 7244, Stop: 7513, Start Num: 31

Candidate Starts for Preamble_9:

(Start: 31 @7244 has 122 MA's), (75, 7343), (91, 7388), (99, 7430), (104, 7457),

Gene: Pterodactyl_9 Start: 7235, Stop: 7504, Start Num: 31

Candidate Starts for Pterodactyl_9:

(Start: 31 @7235 has 122 MA's), (75, 7334), (91, 7379), (99, 7421),

Gene: Pumancara_9 Start: 7263, Stop: 7550, Start Num: 31

Candidate Starts for Pumancara_9:

(Start: 31 @7263 has 122 MA's), (62, 7314), (75, 7362), (99, 7470), (110, 7542),

Gene: QMacho_11 Start: 8135, Stop: 8395, Start Num: 31

Candidate Starts for QMacho_11:

(28, 8123), (Start: 31 @8135 has 122 MA's), (Start: 51 @8159 has 8 MA's), (99, 8315), (102, 8330),

Gene: Quenya_11 Start: 7781, Stop: 8044, Start Num: 31

Candidate Starts for Quenya_11:

(22, 7724), (Start: 31 @7781 has 122 MA's), (Start: 51 @7808 has 8 MA's), (55, 7823), (99, 7964),

Gene: RAP15_13 Start: 10158, Stop: 10427, Start Num: 31

Candidate Starts for RAP15_13:

(Start: 31 @10158 has 122 MA's), (62, 10209), (64, 10224), (75, 10257),

Gene: RcigaStruga_13 Start: 10141, Stop: 10431, Start Num: 31

Candidate Starts for RcigaStruga_13:

(3, 9655), (6, 9742), (9, 9880), (Start: 31 @10141 has 122 MA's), (Start: 51 @10165 has 8 MA's), (75, 10240), (82, 10267), (99, 10348),

Gene: RedFox_10 Start: 7655, Stop: 7909, Start Num: 51

Candidate Starts for RedFox_10:

(38, 7619), (Start: 51 @7655 has 8 MA's), (59, 7679), (73, 7724), (78, 7736), (87, 7781), (92, 7787), (95, 7799), (99, 7826),

Gene: Renna12_11 Start: 7855, Stop: 8109, Start Num: 51

Candidate Starts for Renna12_11:

(Start: 51 @7855 has 8 MA's), (59, 7879), (73, 7924), (78, 7936), (87, 7981), (92, 7987), (95, 7999), (99, 8026),

Gene: Riovina_9 Start: 7261, Stop: 7548, Start Num: 31

Candidate Starts for Riovina_9:

(Start: 31 @7261 has 122 MA's), (75, 7360), (99, 7468), (110, 7540),

Gene: Riverdale_13 Start: 10089, Stop: 10358, Start Num: 31

Candidate Starts for Riverdale_13:

(Start: 31 @10089 has 122 MA's), (62, 10140), (64, 10155), (75, 10188),

Gene: Rollins_9 Start: 7485, Stop: 7748, Start Num: 31

Candidate Starts for Rollins_9:

(22, 7428), (Start: 31 @7485 has 122 MA's), (36, 7500), (Start: 51 @7515 has 8 MA's), (93, 7632), (103, 7692), (108, 7722),

Gene: Rona_10 Start: 7882, Stop: 8139, Start Num: 31

Candidate Starts for Rona_10:

(Start: 31 @7882 has 122 MA's), (64, 7945), (99, 8059), (106, 8104),

Gene: Ronaldo_46 Start: 17223, Stop: 17507, Start Num: 41

Candidate Starts for Ronaldo_46:

(39, 17217), (Start: 41 @17223 has 6 MA's), (61, 17280), (68, 17307), (93, 17388), (94, 17394),

Gene: Rowa_10 Start: 7361, Stop: 7627, Start Num: 43

Candidate Starts for Rowa_10:

(23, 7262), (Start: 43 @7361 has 1 MA's), (99, 7535),

Gene: Rozby_13 Start: 10089, Stop: 10358, Start Num: 31

Candidate Starts for Rozby_13:

(Start: 31 @10089 has 122 MA's), (62, 10140), (64, 10155), (75, 10188),

Gene: Ruchi_11 Start: 8341, Stop: 8598, Start Num: 49

Candidate Starts for Ruchi_11:

(7, 7879), (8, 7987), (10, 8032), (19, 8188), (Start: 49 @8341 has 7 MA's), (92, 8479), (97, 8509),

Gene: SPB78_11 Start: 7748, Stop: 8026, Start Num: 43

Candidate Starts for SPB78_11:

(12, 7511), (16, 7571), (40, 7742), (Start: 43 @7748 has 1 MA's), (66, 7820), (99, 7940), (105, 7973),

Gene: SanaSana_11 Start: 7900, Stop: 8160, Start Num: 29

Candidate Starts for SanaSana_11:

(Start: 29 @7900 has 2 MA's), (64, 7966),

Gene: SansAfet_10 Start: 7665, Stop: 7922, Start Num: 31

Candidate Starts for SansAfet_10:

(28, 7653), (Start: 31 @7665 has 122 MA's), (Start: 51 @7686 has 8 MA's), (98, 7839), (99, 7842), (102, 7857), (107, 7893),

Gene: SarBear_10 Start: 7625, Stop: 7888, Start Num: 30

Candidate Starts for SarBear_10:

(28, 7616), (Start: 30 @7625 has 12 MA's), (Start: 51 @7652 has 8 MA's), (99, 7808), (102, 7823),

Gene: Savage2526_13 Start: 10152, Stop: 10421, Start Num: 31

Candidate Starts for Savage2526_13:

(Start: 31 @10152 has 122 MA's), (62, 10203), (64, 10218), (75, 10251),

Gene: Scuttle_13 Start: 10158, Stop: 10427, Start Num: 31

Candidate Starts for Scuttle_13:

(Start: 31 @10158 has 122 MA's), (62, 10209), (64, 10224), (75, 10257),

Gene: Sergei_9 Start: 7263, Stop: 7550, Start Num: 31

Candidate Starts for Sergei_9:

(Start: 31 @7263 has 122 MA's), (69, 7344), (75, 7362), (99, 7470), (110, 7542),

Gene: Shambre1_11 Start: 8534, Stop: 8782, Start Num: 31

Candidate Starts for Shambre1_11:

(Start: 31 @8534 has 122 MA's), (65, 8600), (83, 8654),

Gene: Sharkboy_10 Start: 7881, Stop: 8138, Start Num: 31

Candidate Starts for Sharkboy_10:

(Start: 31 @7881 has 122 MA's), (64, 7944), (99, 8058), (106, 8103),

Gene: Skylord_9 Start: 7425, Stop: 7688, Start Num: 31

Candidate Starts for Skylord_9:

(22, 7368), (Start: 31 @7425 has 122 MA's), (36, 7440), (Start: 51 @7455 has 8 MA's), (93, 7572), (103, 7632), (108, 7662),

Gene: Slay_10 Start: 8101, Stop: 8364, Start Num: 30
Candidate Starts for Slay_10:
(28, 8092), (Start: 30 @8101 has 12 MA's), (Start: 51 @8128 has 8 MA's), (99, 8284), (102, 8299),

Gene: Sleepyhead_11 Start: 7625, Stop: 7879, Start Num: 46
Candidate Starts for Sleepyhead_11:
(Start: 46 @7625 has 14 MA's), (61, 7667), (77, 7706), (82, 7718),

Gene: Soul22_12 Start: 6947, Stop: 7219, Start Num: 46
Candidate Starts for Soul22_12:
(Start: 46 @6947 has 14 MA's), (64, 7007), (65, 7010), (76, 7040), (82, 7064), (88, 7094), (101, 7154),

Gene: Spartoi_9 Start: 6351, Stop: 6599, Start Num: 52
Candidate Starts for Spartoi_9:
(Start: 52 @6351 has 1 MA's), (58, 6366), (73, 6414), (103, 6540),

Gene: Spooky_11 Start: 6822, Stop: 7046, Start Num: 60
Candidate Starts for Spooky_11:
(Start: 60 @6822 has 18 MA's), (81, 6879), (94, 6936), (95, 6942), (109, 7032),

Gene: Squiddly_12 Start: 7509, Stop: 7733, Start Num: 60
Candidate Starts for Squiddly_12:
(17, 7287), (27, 7371), (47, 7467), (Start: 60 @7509 has 18 MA's), (72, 7548), (81, 7566), (94, 7623),
(95, 7629), (99, 7656), (109, 7719),

Gene: Stoor_10 Start: 7897, Stop: 8157, Start Num: 29
Candidate Starts for Stoor_10:
(Start: 29 @7897 has 2 MA's), (64, 7963),

Gene: Stromboli_10 Start: 7898, Stop: 8161, Start Num: 30
Candidate Starts for Stromboli_10:
(Start: 30 @7898 has 12 MA's), (35, 7910), (Start: 51 @7925 has 8 MA's), (93, 8042), (99, 8081),
(102, 8096),

Gene: Supakev_9 Start: 7263, Stop: 7550, Start Num: 31
Candidate Starts for Supakev_9:
(Start: 31 @7263 has 122 MA's), (62, 7314), (75, 7362), (99, 7470),

Gene: Suppi_13 Start: 10175, Stop: 10444, Start Num: 31
Candidate Starts for Suppi_13:
(28, 10163), (Start: 31 @10175 has 122 MA's), (Start: 49 @10193 has 7 MA's), (67, 10253), (75,
10274), (99, 10361),

Gene: Swervy_10 Start: 7625, Stop: 7888, Start Num: 30
Candidate Starts for Swervy_10:
(28, 7616), (Start: 30 @7625 has 12 MA's), (Start: 51 @7652 has 8 MA's), (99, 7808), (102, 7823),

Gene: TattModd_13 Start: 10152, Stop: 10421, Start Num: 31
Candidate Starts for TattModd_13:
(Start: 31 @10152 has 122 MA's), (62, 10203), (64, 10218), (75, 10251),

Gene: TaylorSipht_11 Start: 8123, Stop: 8377, Start Num: 51

Candidate Starts for TaylorSipt_11:
(38, 8087), (42, 8105), (Start: 51 @8123 has 8 MA's), (59, 8147), (74, 8195), (78, 8204),

Gene: Temper16_9 Start: 7263, Stop: 7550, Start Num: 31
Candidate Starts for Temper16_9:
(Start: 31 @7263 has 122 MA's), (69, 7344), (75, 7362), (99, 7470), (110, 7542),

Gene: TukTuk_10 Start: 7628, Stop: 7948, Start Num: 31
Candidate Starts for TukTuk_10:
(28, 7616), (Start: 31 @7628 has 122 MA's), (Start: 51 @7712 has 8 MA's), (99, 7868), (102, 7883),

Gene: Typha_17 Start: 11749, Stop: 11997, Start Num: 57
Candidate Starts for Typha_17:
(34, 11692), (Start: 57 @11749 has 4 MA's), (71, 11791), (89, 11866), (100, 11914), (108, 11965),
(110, 11983),

Gene: Urla_9 Start: 7290, Stop: 7559, Start Num: 31
Candidate Starts for Urla_9:
(Start: 31 @7290 has 122 MA's), (75, 7389), (78, 7395), (99, 7476),

Gene: VWB_10 Start: 7804, Stop: 8076, Start Num: 43
Candidate Starts for VWB_10:
(Start: 43 @7804 has 1 MA's), (55, 7846), (96, 7984), (99, 7996),

Gene: Vallejo_13 Start: 10090, Stop: 10359, Start Num: 31
Candidate Starts for Vallejo_13:
(Start: 31 @10090 has 122 MA's), (62, 10141), (64, 10156), (75, 10189),

Gene: Vitas_9 Start: 7425, Stop: 7688, Start Num: 31
Candidate Starts for Vitas_9:
(22, 7368), (Start: 31 @7425 has 122 MA's), (36, 7440), (Start: 51 @7455 has 8 MA's), (93, 7572),
(103, 7632), (108, 7662),

Gene: Volt_45 Start: 17223, Stop: 17507, Start Num: 41
Candidate Starts for Volt_45:
(39, 17217), (Start: 41 @17223 has 6 MA's), (61, 17280), (68, 17307), (93, 17388), (94, 17394),

Gene: Vulpecula_11 Start: 8417, Stop: 8674, Start Num: 49
Candidate Starts for Vulpecula_11:
(1, 7796), (2, 7841), (7, 7955), (8, 8063), (19, 8264), (38, 8381), (Start: 49 @8417 has 7 MA's), (97,
8585),

Gene: Vulture_9 Start: 7261, Stop: 7548, Start Num: 31
Candidate Starts for Vulture_9:
(Start: 31 @7261 has 122 MA's), (75, 7360), (99, 7468),

Gene: Wawa_13 Start: 10127, Stop: 10396, Start Num: 31
Candidate Starts for Wawa_13:
(Start: 31 @10127 has 122 MA's), (62, 10178), (64, 10193), (75, 10226),

Gene: Wayne_13 Start: 10221, Stop: 10490, Start Num: 31
Candidate Starts for Wayne_13:

(28, 10209), (Start: 31 @10221 has 122 MA's), (Start: 49 @10239 has 7 MA's), (67, 10299), (75, 10320), (99, 10407),

Gene: Whitney_11 Start: 6824, Stop: 7048, Start Num: 60

Candidate Starts for Whitney_11:

(15, 6587), (17, 6602), (27, 6686), (Start: 60 @6824 has 18 MA's), (72, 6863), (81, 6881), (94, 6938), (95, 6944), (99, 6971), (109, 7034),

Gene: WonderBoy_9 Start: 7243, Stop: 7512, Start Num: 31

Candidate Starts for WonderBoy_9:

(Start: 31 @7243 has 122 MA's), (75, 7342), (99, 7429),

Gene: Yoshi_12 Start: 6947, Stop: 7219, Start Num: 46

Candidate Starts for Yoshi_12:

(Start: 46 @6947 has 14 MA's), (64, 7007), (65, 7010), (76, 7040), (82, 7064), (88, 7094), (101, 7154),

Gene: Zapner_13 Start: 7472, Stop: 7744, Start Num: 46

Candidate Starts for Zapner_13:

(Start: 46 @7472 has 14 MA's), (64, 7532), (65, 7535), (76, 7565), (82, 7589), (88, 7619), (101, 7679),

Gene: Ziko_46 Start: 17163, Stop: 17447, Start Num: 41

Candidate Starts for Ziko_46:

(39, 17157), (Start: 41 @17163 has 6 MA's), (61, 17220), (68, 17247), (93, 17328), (94, 17334),

Gene: Zorro_13 Start: 10106, Stop: 10375, Start Num: 31

Candidate Starts for Zorro_13:

(Start: 31 @10106 has 122 MA's), (62, 10157), (64, 10172), (75, 10205),