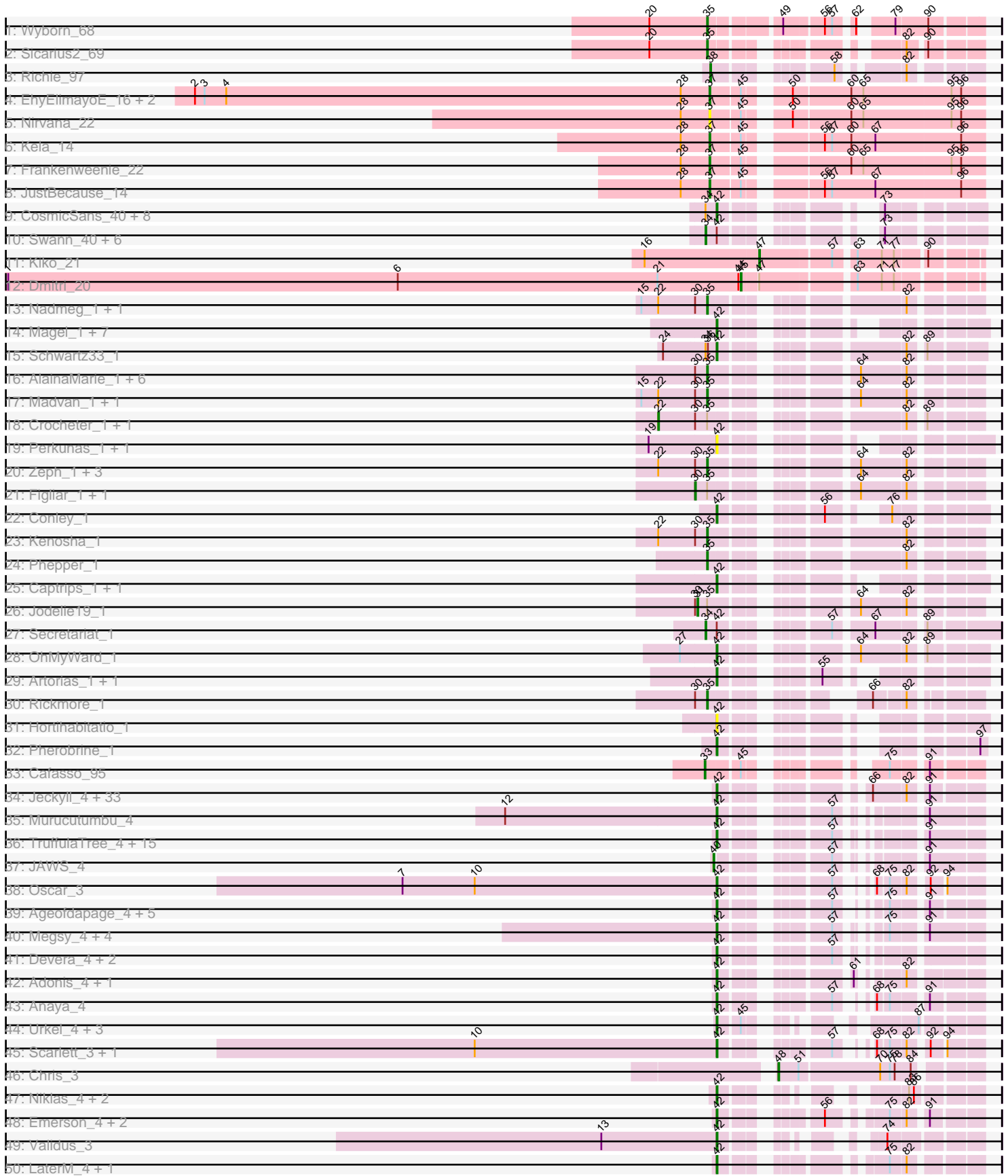
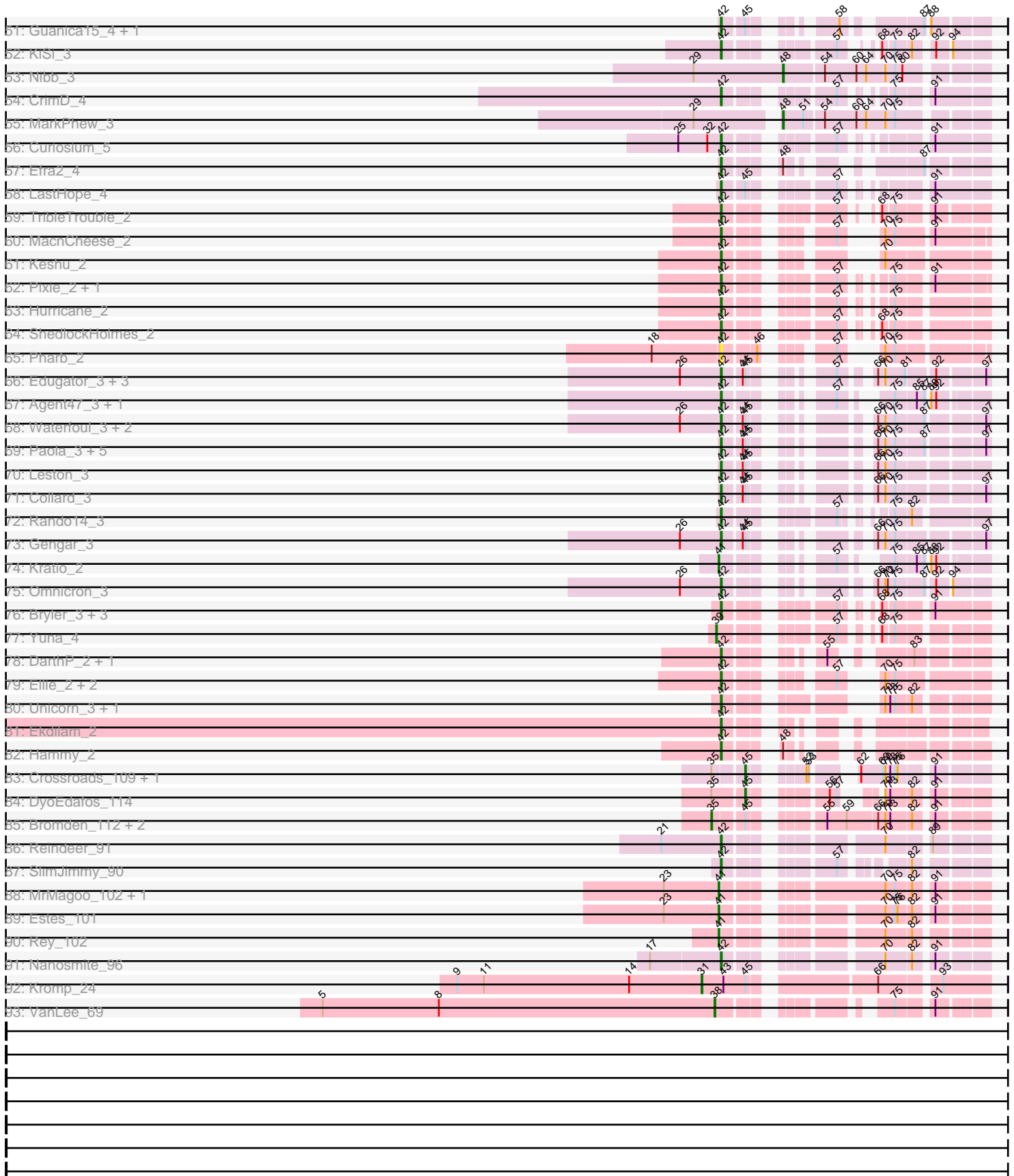


Pham 157568



Pham 157568



Note: Tracks are now grouped by subcluster and scaled. Switching in subcluster is indicated by changes in track color. Track scale is now set by default to display the region 30 bp upstream of start 1 to 30 bp downstream of the last possible start. If this default region is judged to be packed too tightly with annotated starts, the track will be further scaled to only show that region of the ORF with annotated starts. This action will be indicated by adding "Zoomed" to the title. For starts, yellow indicates the location of called starts comprised solely of Glimmer/GeneMark auto-annotations, green indicates the location of called starts with at least 1 manual gene annotation.

Pham 157568 Report

This analysis was run 04/13/24 on database version 558.

Pham number 157568 has 225 members, 21 are drafts.

Phages represented in each track:

- Track 1 : Wyborn_68
- Track 2 : Sicarius2_69
- Track 3 : Richie_97
- Track 4 : EhyElimayoE_16, Satis_16, Kradal_16
- Track 5 : Nirvana_22
- Track 6 : Kela_14
- Track 7 : Frankenweenie_22
- Track 8 : JustBecause_14
- Track 9 : CosmicSans_40, Rhodalysa_40, BobbyDazzler_40, Krishelle_40, Lillie_40, TWAMP_40, Bonanza_40, RER2_33, Hiro_40
- Track 10 : Swann_40, Rasputin_40, Bradshaw_40, Alpacados_39, Phrankenstein_40, Gollum_40, PhailMary_39
- Track 11 : Kiko_21
- Track 12 : Dmitri_20
- Track 13 : Nadmeg_1, Burley_1
- Track 14 : Magel_1, Capybara_1, Gravy_1, Odesza_1, Gill_1, Roney_1, Tanis_1, Kerry_1
- Track 15 : Schwartz33_1
- Track 16 : AlainaMarie_1, OlgasClover_1, Aflac_1, EndAve_1, Chikenjars_1, Duffington_1, TenaciousP_1
- Track 17 : Madvan_1, Runhaar_1
- Track 18 : Crocheter_1, Untouchable_1
- Track 19 : Perkunas_1, Petito_1
- Track 20 : Zeph_1, Eddiemania_1, Hydrus_1, Vardy_1
- Track 21 : Figliar_1, Nithya_1
- Track 22 : Conley_1
- Track 23 : Kenosha_1
- Track 24 : Phepper_1
- Track 25 : Captrips_1, Avazak_1
- Track 26 : Jodelie19_1
- Track 27 : Secretariat_1
- Track 28 : OhMyWard_1
- Track 29 : Artorias_1, FortCran_1
- Track 30 : Rickmore_1
- Track 31 : Hortihabitatio_1
- Track 32 : Pherobrine_1
- Track 33 : Cafasso_95

- Track 34 : Jeckyll_4, Mynx_4, Atiba_4, Ganymede_4, Durfee_4, Blizzard_4, Homura_4, ShiaSurprise_4, Boiii_4, CaseJules_4, BGlluvia_4, CheetoDust_4, Twitch_4, Topper_4, Piatt_4, Veliki_4, Lunahalos_4, Dalmuri_4, Belladonna_4, QuincyRose_4, Jarvi_4, Llorens_4, Asayake_4, Hyperbowlee_4, Zavala_4, Capricorn_4, Rosmarinus_4, Peel_4, Tachez_4, BEEST_4, CREW_4, Padfoot_4, Inky_4, Spock_4
- Track 35 : Murucutumbu_4
- Track 36 : TruffulaTree_4, BarrelRoll_4, Adephagia_4, Joy99_4, Slimphazie_4, Apocalypse_4, Zabiza_4, BaghaKamala_4, Bella96_4, YoureAdopted_4, HedwigODU_4, ActinUp_4, Jayhawk_4, MeaningOfLife_4, Ramen_4, Rapunzel97_4
- Track 37 : JAWS_4
- Track 38 : Oscar_3
- Track 39 : Ageofdapage_4, Beezoo_4, Angelica_4, Pokerus_4, Deby_4, Sulley_4
- Track 40 : Megsy_4, Prithvi_4, LindNT_4, TreyKay_4, TaiwanKao_4
- Track 41 : Devera_4, Dole_4, Illumine_4
- Track 42 : Adonis_4, Tiri_4
- Track 43 : Anaya_4
- Track 44 : Urkel_4, DrHayes_4, TiniBug_4, SamuelLPlaqson_4
- Track 45 : Scarlett_3, LeMond_3
- Track 46 : Chris_3
- Track 47 : Niklas_4, Shaobing_4, Peanam_4
- Track 48 : Emerson_4, AlishaPH_4, Padpat_4
- Track 49 : Validus_3
- Track 50 : LaterM_4, Stinson_4
- Track 51 : Guanica15_4, Yunkel11_4
- Track 52 : KiSi_3
- Track 53 : Nibb_3
- Track 54 : CrimD_4
- Track 55 : MarkPhew_3
- Track 56 : Curiosium_5
- Track 57 : Efra2_4
- Track 58 : LastHope_4
- Track 59 : TribbleTrouble_2
- Track 60 : MacnCheese_2
- Track 61 : Keshu_2
- Track 62 : Pixie_2, TBond007_2
- Track 63 : Hurricane_2
- Track 64 : ShedlockHolmes_2
- Track 65 : Pharb_2
- Track 66 : Edugator_3, Psycho_3, Dadosky_3, AlleyCat_3
- Track 67 : Agent47_3, InvictusManeo_3
- Track 68 : Waterfoul_3, SoSeph_3, Heftyboy_3
- Track 69 : Paola_3, Thyatira_3, Guillsminger_3, Miryou_3, OkiRoe_3, Feyre_3
- Track 70 : Leston_3
- Track 71 : Collard_3
- Track 72 : Rando14_3
- Track 73 : Gengar_3
- Track 74 : Kratio_2
- Track 75 : Omnicron_3
- Track 76 : Bryler_3, Phrank_3, Tierra_3, Cain_3
- Track 77 : Yuna_4
- Track 78 : DarthP_2, Amohnition_2
- Track 79 : Ellie_2, Fefferhead_2, Amgine_2

- Track 80 : Unicorn_3, PhelpsODU_3
- Track 81 : Ekdilam_2
- Track 82 : Hammy_2
- Track 83 : Crossroads_109, MkaliMitinis3_109
- Track 84 : DyoEdafos_114
- Track 85 : Bromden_112, Chaser_110, Douge_110
- Track 86 : Reindeer_91
- Track 87 : SlimJimmy_90
- Track 88 : MrMagoo_102, GardenSalsa_101
- Track 89 : Estes_101
- Track 90 : Rey_102
- Track 91 : Nanosmite_96
- Track 92 : Kromp_24
- Track 93 : VanLee_69

Summary of Final Annotations (See graph section above for start numbers):

The start number called the most often in the published annotations is 42, it was called in 148 of the 204 non-draft genes in the pham.

Genes that call this "Most Annotated" start:

• ActinUp_4, Adephagia_4, Adonis_4, Agent47_3, Ageofdapage_4, AlishaPH_4, AlleyCat_3, Amgine_2, Amohnition_2, Anaya_4, Angelica_4, Apocalypse_4, Artorias_1, Asayake_4, Atiba_4, Avazak_1, BEEST_4, BGIlluviae_4, BaghaKamala_4, BarrelRoll_4, Beezoo_4, Bella96_4, Belladonna_4, Blizzard_4, BobbyDazzler_40, Boiiii_4, Bonanza_40, Bryler_3, CREW_4, Cain_3, Capricorn_4, Captrips_1, Capybara_1, CaseJules_4, CheetoDust_4, Collard_3, Conley_1, CosmicSans_40, CrimD_4, Curiosium_5, Dadosky_3, Dalmuri_4, DarthP_2, Deby_4, Devera_4, Dole_4, DrHayes_4, Durfee_4, Edugator_3, Efra2_4, Ekdilam_2, Ellie_2, Emerson_4, Fefferhead_2, Feyre_3, FortCran_1, Ganymede_4, Gengar_3, Gill_1, Gravy_1, Guanica15_4, Guillsminger_3, Hammy_2, HedwigODU_4, Heftyboy_3, Hiro_40, Homura_4, Hortihabitatio_1, Hurricane_2, Hyperbowlee_4, Illumine_4, Inky_4, InvictusManeo_3, Jarvi_4, Jayhawk_4, Jeckyll_4, Joy99_4, Kerry_1, Keshu_2, KiSi_3, Krishelle_40, LastHope_4, LaterM_4, LeMond_3, Leston_3, Lillie_40, LindNT_4, Llorens_4, Lunahalos_4, MacnCheese_2, Magel_1, MeaningOfLife_4, Megsy_4, Miryou_3, Murucutumbu_4, Mynx_4, Nanosmite_96, Niklas_4, Odesza_1, OhMyWard_1, OkiRoe_3, Omnicron_3, Oscar_3, Padfoot_4, Padpat_4, Paola_3, Peanam_4, Peel_4, Perkunas_1, Petite_1, Pharb_2, PhelpsODU_3, Pherobrine_1, Phrank_3, Piatt_4, Pixie_2, Pokerus_4, Prithvi_4, Psycho_3, QuincyRose_4, RER2_33, Ramen_4, Rando14_3, Rapunzel97_4, Reindeer_91, Rhodalysa_40, Roney_1, Rosmarinus_4, SamuelLPlaqson_4, Scarlett_3, Schwartz33_1, Shaobing_4, ShedlockHolmes_2, ShiaSurprise_4, SlimJimmy_90, Slimphazie_4, SoSeph_3, Spock_4, Stinson_4, Sulley_4, TBond007_2, TWAMP_40, Tachez_4, TaiwanKao_4, Tanis_1, Thyatira_3, Tierra_3, TiniBug_4, Tiri_4, Topper_4, TreyKay_4, TribbleTrouble_2, TruffulaTree_4, Twitch_4, Unicorn_3, Urkel_4, Validus_3, Veliki_4, Waterfoul_3, YoureAdopted_4, Yunkel11_4, Zabiza_4, Zavala_4,

Genes that have the "Most Annotated" start but do not call it:

- Alpacados_39, Bradshaw_40, Gollum_40, PhailMary_39, Phrankenstein_40, Rasputin_40, Secretariat_1, Swann_40,

Genes that do not have the "Most Annotated" start:

- Aflac_1, AlainaMarie_1, Bromden_112, Burley_1, Cafasso_95, Chaser_110, Chikenjars_1, Chris_3, Crocheter_1, Crossroads_109, Dmitri_20, Douge_110, Duffington_1, DyoEdafos_114, Eddiemania_1, EhyElimayoE_16, EndAve_1, Estes_101, Figliar_1, Frankenweenie_22, GardenSalsa_101, Hydrus_1, JAWS_4, Jodelie19_1, JustBecause_14, Kela_14, Kenosha_1, Kiko_21, Kradal_16, Kratio_2, Kromp_24, Madvan_1, MarkPhew_3, MkaliMitinis3_109, MrMagoo_102, Nadmeg_1, Nibb_3, Nirvana_22, Nithya_1, OlgasClover_1, Phepper_1, Rey_102, Richie_97, Rickmore_1, Runhaar_1, Satis_16, Sicarius2_69, TenaciousP_1, Untouchable_1, VanLee_69, Vardy_1, Wyborn_68, Yuna_4, Zeph_1,

Summary by start number:

Start 22:

- Found in 11 of 225 (4.9%) of genes in pham
- Manual Annotations of this start: 2 of 204
- Called 18.2% of time when present
- Phage (with cluster) where this start called: Crocheter_1 (DJ), Untouchable_1 (DJ),

Start 30:

- Found in 22 of 225 (9.8%) of genes in pham
- Manual Annotations of this start: 2 of 204
- Called 9.1% of time when present
- Phage (with cluster) where this start called: Figliar_1 (DJ), Nithya_1 (DJ),

Start 31:

- Found in 2 of 225 (0.9%) of genes in pham
- Manual Annotations of this start: 2 of 204
- Called 100.0% of time when present
- Phage (with cluster) where this start called: Jodelie19_1 (DJ), Kromp_24 (singleton),

Start 33:

- Found in 1 of 225 (0.4%) of genes in pham
- Manual Annotations of this start: 1 of 204
- Called 100.0% of time when present
- Phage (with cluster) where this start called: Cafasso_95 (DZ),

Start 34:

- Found in 18 of 225 (8.0%) of genes in pham
- Manual Annotations of this start: 8 of 204
- Called 44.4% of time when present
- Phage (with cluster) where this start called: Alpacados_39 (CA), Bradshaw_40 (CA), Gollum_40 (CA), PhailMary_39 (CA), Phrankenstein_40 (CA), Rasputin_40 (CA), Secretariat_1 (DJ), Swann_40 (CA),

Start 35:

- Found in 31 of 225 (13.8%) of genes in pham
- Manual Annotations of this start: 18 of 204
- Called 74.2% of time when present

- Phage (with cluster) where this start called: Aflac_1 (DJ), AlainaMarie_1 (DJ), Bromden_112 (L4), Burley_1 (DJ), Chaser_110 (L4), Chikenjars_1 (DJ), Douge_110 (L4), Duffington_1 (DJ), Eddiemania_1 (DJ), EndAve_1 (DJ), Hydrus_1 (DJ), Kenosha_1 (DJ), Madvan_1 (DJ), Nadmeg_1 (DJ), OlgasClover_1 (DJ), Phepper_1 (DJ), Rickmore_1 (DJ), Runhaar_1 (DJ), Sicarius2_69 (AO2), TenaciousP_1 (DJ), Vardy_1 (DJ), Wybourn_68 (AO2), Zeph_1 (DJ),

Start 37:

- Found in 7 of 225 (3.1%) of genes in pham
- Manual Annotations of this start: 6 of 204
- Called 100.0% of time when present
- Phage (with cluster) where this start called: EhyElimayoE_16 (BM), Frankenweenie_22 (BM), JustBecause_14 (BM), Kela_14 (BM), Kradal_16 (BM), Nirvana_22 (BM), Satis_16 (BM),

Start 38:

- Found in 2 of 225 (0.9%) of genes in pham
- Manual Annotations of this start: 2 of 204
- Called 100.0% of time when present
- Phage (with cluster) where this start called: Richie_97 (AY), VanLee_69 (singleton),

Start 39:

- Found in 1 of 225 (0.4%) of genes in pham
- Manual Annotations of this start: 1 of 204
- Called 100.0% of time when present
- Phage (with cluster) where this start called: Yuna_4 (K6),

Start 40:

- Found in 1 of 225 (0.4%) of genes in pham
- Manual Annotations of this start: 1 of 204
- Called 100.0% of time when present
- Phage (with cluster) where this start called: JAWS_4 (K1),

Start 41:

- Found in 5 of 225 (2.2%) of genes in pham
- Manual Annotations of this start: 5 of 204
- Called 100.0% of time when present
- Phage (with cluster) where this start called: Estes_101 (M2), GardenSalsa_101 (M2), Kratio_2 (K5), MrMagoo_102 (M2), Rey_102 (M2),

Start 42:

- Found in 171 of 225 (76.0%) of genes in pham
- Manual Annotations of this start: 148 of 204
- Called 95.3% of time when present
- Phage (with cluster) where this start called: ActinUp_4 (K1), Adephagia_4 (K1), Adonis_4 (K1), Agent47_3 (K5), Ageofdapage_4 (K1), AlishaPH_4 (K1), AlleyCat_3 (K5), Amgine_2 (K6), Amohinition_2 (K6), Anaya_4 (K1), Angelica_4 (K1), Apocalypse_4 (K1), Artorias_1 (DJ), Asayake_4 (K1), Atiba_4 (K1), Avazak_1 (DJ), BEEST_4 (K1), BGlluviae_4 (K1), BaghaKamala_4 (K1), BarrelRoll_4 (K1), Beezoo_4 (K1), Bella96_4 (K1), Belladonna_4 (K1), Blizzard_4 (K1), BobbyDazzler_40 (CA), Boiiii_4 (K1), Bonanza_40 (CA), Bryler_3 (K6), CREW_4 (K1), Cain_3 (K6), Capricorn_4 (K1), Captrips_1 (DJ), Capybara_1 (DJ), CaseJules_4 (K1), CheetoDust_4 (K1), Collard_3 (K5), Conley_1 (DJ),

CosmicSans_40 (CA), CrimD_4 (K1), Curiosium_5 (K1), Dadosky_3 (K5), Dalmuri_4 (K1), DarthP_2 (K6), Deby_4 (K1), Devera_4 (K1), Dole_4 (K1), DrHayes_4 (K1), Durfee_4 (K1), Edugator_3 (K5), Efra2_4 (K1), Ekdilam_2 (K6), Ellie_2 (K6), Emerson_4 (K1), Fefferhead_2 (K6), Feyre_3 (K5), FortCran_1 (DJ), Ganymede_4 (K1), Gengar_3 (K5), Gill_1 (DJ), Gravy_1 (DJ), Guanica15_4 (K1), Guillsminger_3 (K5), Hammy_2 (K6), HedwigODU_4 (K1), Heftyboy_3 (K5), Hiro_40 (CA), Homura_4 (K1), Hortihabitatio_1 (DJ), Hurricane_2 (K3), Hyperbowlee_4 (K1), Illumine_4 (K1), Inky_4 (K1), InvictusManeo_3 (K5), Jarvi_4 (K1), Jayhawk_4 (K1), Jeckyll_4 (K1), Joy99_4 (K1), Kerry_1 (DJ), Keshu_2 (K3), KiSi_3 (K1), Krishelle_40 (CA), LastHope_4 (K1), LaterM_4 (K1), LeMond_3 (K1), Leston_3 (K5), Lillie_40 (CA), LindNT_4 (K1), Llorens_4 (K1), Lunahalos_4 (K1), MacnCheese_2 (K3), Magel_1 (DJ), MeaningOfLife_4 (K1), Megsy_4 (K1), Miryou_3 (K5), Murucutumbu_4 (K1), Mynx_4 (K1), Nanosmite_96 (M3), Niklas_4 (K1), Odesza_1 (DJ), OhMyWard_1 (DJ), OkiRoe_3 (K5), Omnicron_3 (K5), Oscar_3 (K1), Padfoot_4 (K1), Padpat_4 (K1), Paola_3 (K5), Peanam_4 (K1), Peel_4 (K1), Perkunas_1 (DJ), Petite_1 (DJ), Pharb_2 (K3), PhelpsODU_3 (K6), Pherobrine_1 (DJ), Phrank_3 (K6), Piatt_4 (K1), Pixie_2 (K3), Pokerus_4 (K1), Prithvi_4 (K1), Psycho_3 (K5), QuincyRose_4 (K1), RER2_33 (CA), Ramen_4 (K1), Rando14_3 (K5), Rapunzel97_4 (K1), Reindeer_91 (M1), Rhodalysa_40 (CA), Roney_1 (DJ), Rosmarinus_4 (K1), SamuelLPlaqson_4 (K1), Scarlett_3 (K1), Schwartz33_1 (DJ), Shaobing_4 (K1), ShedlockHolmes_2 (K3), ShiaSurprise_4 (K1), SlimJimmy_90 (M1), Slimphazie_4 (K1), SoSeph_3 (K5), Spock_4 (K1), Stinson_4 (K1), Sulley_4 (K1), TBond007_2 (K3), TWAMP_40 (CA), Tachez_4 (K1), TaiwanKao_4 (K1), Tanis_1 (DJ), Thyatira_3 (K5), Tierra_3 (K6), TiniBug_4 (K1), Tiri_4 (K1), Topper_4 (K1), TreyKay_4 (K1), TripleTrouble_2 (K3), TruffulaTree_4 (K1), Twitch_4 (K1), Unicorn_3 (K6), Urkel_4 (K1), Validus_3 (K1), Veliki_4 (K1), Waterfoul_3 (K5), YoureAdopted_4 (K1), Yunkel11_4 (K1), Zabiza_4 (K1), Zavala_4 (K1),

Start 45:

- Found in 39 of 225 (17.3%) of genes in pham
- Manual Annotations of this start: 4 of 204
- Called 10.3% of time when present
- Phage (with cluster) where this start called: Crossroads_109 (L2), Dmitri_20 (DB), DyoEdafos_114 (L4), MkaliMitinis3_109 (L2),

Start 47:

- Found in 2 of 225 (0.9%) of genes in pham
- Manual Annotations of this start: 1 of 204
- Called 50.0% of time when present
- Phage (with cluster) where this start called: Kiko_21 (DB),

Start 48:

- Found in 5 of 225 (2.2%) of genes in pham
- Manual Annotations of this start: 3 of 204
- Called 60.0% of time when present
- Phage (with cluster) where this start called: Chris_3 (K1), MarkPhew_3 (K1), Nibb_3 (K1),

Summary by clusters:

There are 17 clusters represented in this pham: singleton, DJ, K5, BM, CA, DB, K1, K3, L4, M1, K6, M3, M2, AY, L2, DZ, AO2,

Info for manual annotations of cluster AO2:

- Start number 35 was manually annotated 2 times for cluster AO2.

Info for manual annotations of cluster AY:

- Start number 38 was manually annotated 1 time for cluster AY.

Info for manual annotations of cluster BM:

- Start number 37 was manually annotated 6 times for cluster BM.

Info for manual annotations of cluster CA:

- Start number 34 was manually annotated 7 times for cluster CA.
- Start number 42 was manually annotated 8 times for cluster CA.

Info for manual annotations of cluster DB:

- Start number 45 was manually annotated 1 time for cluster DB.
- Start number 47 was manually annotated 1 time for cluster DB.

Info for manual annotations of cluster DJ:

- Start number 22 was manually annotated 2 times for cluster DJ.
- Start number 30 was manually annotated 2 times for cluster DJ.
- Start number 31 was manually annotated 1 time for cluster DJ.
- Start number 34 was manually annotated 1 time for cluster DJ.
- Start number 35 was manually annotated 14 times for cluster DJ.
- Start number 42 was manually annotated 13 times for cluster DJ.

Info for manual annotations of cluster DZ:

- Start number 33 was manually annotated 1 time for cluster DZ.

Info for manual annotations of cluster K1:

- Start number 40 was manually annotated 1 time for cluster K1.
- Start number 42 was manually annotated 86 times for cluster K1.
- Start number 48 was manually annotated 3 times for cluster K1.

Info for manual annotations of cluster K3:

- Start number 42 was manually annotated 7 times for cluster K3.

Info for manual annotations of cluster K5:

- Start number 41 was manually annotated 1 time for cluster K5.
- Start number 42 was manually annotated 18 times for cluster K5.

Info for manual annotations of cluster K6:

- Start number 39 was manually annotated 1 time for cluster K6.
- Start number 42 was manually annotated 13 times for cluster K6.

Info for manual annotations of cluster L2:

- Start number 45 was manually annotated 2 times for cluster L2.

Info for manual annotations of cluster L4:

- Start number 35 was manually annotated 2 times for cluster L4.
- Start number 45 was manually annotated 1 time for cluster L4.

Info for manual annotations of cluster M1:

- Start number 42 was manually annotated 2 times for cluster M1.

Info for manual annotations of cluster M2:

- Start number 41 was manually annotated 4 times for cluster M2.

Info for manual annotations of cluster M3:

- Start number 42 was manually annotated 1 time for cluster M3.

Gene Information:

Gene: ActinUp_4 Start: 727, Stop: 954, Start Num: 42

Candidate Starts for ActinUp_4:

(Start: 42 @727 has 148 MA's), (57, 823), (91, 892),

Gene: Adephagia_4 Start: 727, Stop: 954, Start Num: 42

Candidate Starts for Adephagia_4:

(Start: 42 @727 has 148 MA's), (57, 823), (91, 892),

Gene: Adonis_4 Start: 703, Stop: 930, Start Num: 42

Candidate Starts for Adonis_4:

(Start: 42 @703 has 148 MA's), (61, 814), (82, 853),

Gene: Aflac_1 Start: 211, Stop: 468, Start Num: 35

Candidate Starts for Aflac_1:

(Start: 30 @196 has 2 MA's), (Start: 35 @211 has 18 MA's), (64, 340), (82, 394),

Gene: Agent47_3 Start: 542, Stop: 754, Start Num: 42

Candidate Starts for Agent47_3:

(Start: 42 @542 has 148 MA's), (57, 626), (75, 659), (85, 683), (87, 692), (88, 695), (92, 701),

Gene: Ageofdapage_4 Start: 686, Stop: 904, Start Num: 42

Candidate Starts for Ageofdapage_4:

(Start: 42 @686 has 148 MA's), (57, 782), (75, 812), (91, 848),

Gene: AlainaMarie_1 Start: 211, Stop: 468, Start Num: 35

Candidate Starts for AlainaMarie_1:

(Start: 30 @196 has 2 MA's), (Start: 35 @211 has 18 MA's), (64, 340), (82, 394),

Gene: AlishaPH_4 Start: 726, Stop: 959, Start Num: 42

Candidate Starts for AlishaPH_4:

(Start: 42 @726 has 148 MA's), (56, 813), (75, 867), (82, 885), (91, 903),

Gene: AlleyCat_3 Start: 542, Stop: 772, Start Num: 42

Candidate Starts for AlleyCat_3:

(26, 491), (Start: 42 @542 has 148 MA's), (44, 563), (Start: 45 @566 has 4 MA's), (57, 626), (66, 653), (70, 662), (81, 686), (92, 716), (97, 767),

Gene: Alpacados_39 Start: 30016, Stop: 29783, Start Num: 34

Candidate Starts for Alpacados_39:

(Start: 34 @30016 has 8 MA's), (Start: 42 @30004 has 148 MA's), (73, 29884),

Gene: Amgine_2 Start: 192, Stop: 413, Start Num: 42

Candidate Starts for Amgine_2:
(Start: 42 @192 has 148 MA's), (57, 282), (70, 300), (75, 312),

Gene: Amohnition_2 Start: 207, Stop: 419, Start Num: 42
Candidate Starts for Amohnition_2:
(Start: 42 @207 has 148 MA's), (55, 279), (83, 342),

Gene: Anaya_4 Start: 727, Stop: 945, Start Num: 42
Candidate Starts for Anaya_4:
(Start: 42 @727 has 148 MA's), (57, 823), (68, 841), (75, 853), (91, 889),

Gene: Angelica_4 Start: 727, Stop: 945, Start Num: 42
Candidate Starts for Angelica_4:
(Start: 42 @727 has 148 MA's), (57, 823), (75, 853), (91, 889),

Gene: Apocalypse_4 Start: 727, Stop: 954, Start Num: 42
Candidate Starts for Apocalypse_4:
(Start: 42 @727 has 148 MA's), (57, 823), (91, 892),

Gene: Artorias_1 Start: 221, Stop: 445, Start Num: 42
Candidate Starts for Artorias_1:
(Start: 42 @221 has 148 MA's), (55, 305),

Gene: Asayake_4 Start: 727, Stop: 963, Start Num: 42
Candidate Starts for Asayake_4:
(Start: 42 @727 has 148 MA's), (66, 850), (82, 889), (91, 907),

Gene: Atiba_4 Start: 703, Stop: 939, Start Num: 42
Candidate Starts for Atiba_4:
(Start: 42 @703 has 148 MA's), (66, 826), (82, 865), (91, 883),

Gene: Avazak_1 Start: 221, Stop: 445, Start Num: 42
Candidate Starts for Avazak_1:
(Start: 42 @221 has 148 MA's),

Gene: BEEST_4 Start: 727, Stop: 963, Start Num: 42
Candidate Starts for BEEST_4:
(Start: 42 @727 has 148 MA's), (66, 850), (82, 889), (91, 907),

Gene: BGlluviae_4 Start: 727, Stop: 963, Start Num: 42
Candidate Starts for BGlluviae_4:
(Start: 42 @727 has 148 MA's), (66, 850), (82, 889), (91, 907),

Gene: BaghaKamala_4 Start: 703, Stop: 930, Start Num: 42
Candidate Starts for BaghaKamala_4:
(Start: 42 @703 has 148 MA's), (57, 799), (91, 868),

Gene: BarrelRoll_4 Start: 727, Stop: 954, Start Num: 42
Candidate Starts for BarrelRoll_4:
(Start: 42 @727 has 148 MA's), (57, 823), (91, 892),

Gene: Beezoo_4 Start: 724, Stop: 942, Start Num: 42
Candidate Starts for Beezoo_4:

(Start: 42 @724 has 148 MA's), (57, 820), (75, 850), (91, 886),

Gene: Bella96_4 Start: 691, Stop: 915, Start Num: 42

Candidate Starts for Bella96_4:

(Start: 42 @691 has 148 MA's), (57, 787), (91, 853),

Gene: Belladonna_4 Start: 727, Stop: 963, Start Num: 42

Candidate Starts for Belladonna_4:

(Start: 42 @727 has 148 MA's), (66, 850), (82, 889), (91, 907),

Gene: Blizzard_4 Start: 727, Stop: 963, Start Num: 42

Candidate Starts for Blizzard_4:

(Start: 42 @727 has 148 MA's), (66, 850), (82, 889), (91, 907),

Gene: BobbyDazzler_40 Start: 30078, Stop: 29857, Start Num: 42

Candidate Starts for BobbyDazzler_40:

(Start: 34 @30090 has 8 MA's), (Start: 42 @30078 has 148 MA's), (73, 29958),

Gene: Boiiii_4 Start: 727, Stop: 963, Start Num: 42

Candidate Starts for Boiiii_4:

(Start: 42 @727 has 148 MA's), (66, 850), (82, 889), (91, 907),

Gene: Bonanza_40 Start: 30006, Stop: 29785, Start Num: 42

Candidate Starts for Bonanza_40:

(Start: 34 @30018 has 8 MA's), (Start: 42 @30006 has 148 MA's), (73, 29886),

Gene: Bradshaw_40 Start: 30044, Stop: 29811, Start Num: 34

Candidate Starts for Bradshaw_40:

(Start: 34 @30044 has 8 MA's), (Start: 42 @30032 has 148 MA's), (73, 29912),

Gene: Bromden_112 Start: 64818, Stop: 65084, Start Num: 35

Candidate Starts for Bromden_112:

(Start: 35 @64818 has 18 MA's), (Start: 45 @64851 has 4 MA's), (55, 64911), (59, 64935), (66, 64971), (70, 64980), (73, 64986), (82, 65010), (91, 65028),

Gene: Bryler_3 Start: 658, Stop: 882, Start Num: 42

Candidate Starts for Bryler_3:

(Start: 42 @658 has 148 MA's), (57, 754), (68, 772), (75, 784), (91, 820),

Gene: Burley_1 Start: 211, Stop: 468, Start Num: 35

Candidate Starts for Burley_1:

(15, 130), (Start: 22 @151 has 2 MA's), (Start: 30 @196 has 2 MA's), (Start: 35 @211 has 18 MA's), (82, 394),

Gene: CREW_4 Start: 727, Stop: 963, Start Num: 42

Candidate Starts for CREW_4:

(Start: 42 @727 has 148 MA's), (66, 850), (82, 889), (91, 907),

Gene: Cafasso_95 Start: 55818, Stop: 56057, Start Num: 33

Candidate Starts for Cafasso_95:

(Start: 33 @55818 has 1 MA's), (Start: 45 @55854 has 4 MA's), (75, 55965), (91, 56001),

Gene: Cain_3 Start: 658, Stop: 882, Start Num: 42

Candidate Starts for Cain_3:

(Start: 42 @658 has 148 MA's), (57, 754), (68, 772), (75, 784), (91, 820),

Gene: Capricorn_4 Start: 727, Stop: 963, Start Num: 42

Candidate Starts for Capricorn_4:

(Start: 42 @727 has 148 MA's), (66, 850), (82, 889), (91, 907),

Gene: Captrips_1 Start: 221, Stop: 445, Start Num: 42

Candidate Starts for Captrips_1:

(Start: 42 @221 has 148 MA's),

Gene: Capybara_1 Start: 221, Stop: 445, Start Num: 42

Candidate Starts for Capybara_1:

(Start: 42 @221 has 148 MA's),

Gene: CaseJules_4 Start: 727, Stop: 963, Start Num: 42

Candidate Starts for CaseJules_4:

(Start: 42 @727 has 148 MA's), (66, 850), (82, 889), (91, 907),

Gene: Chaser_110 Start: 63185, Stop: 63451, Start Num: 35

Candidate Starts for Chaser_110:

(Start: 35 @63185 has 18 MA's), (Start: 45 @63218 has 4 MA's), (55, 63278), (59, 63302), (66, 63338), (70, 63347), (73, 63353), (82, 63377), (91, 63395),

Gene: CheetoDust_4 Start: 703, Stop: 939, Start Num: 42

Candidate Starts for CheetoDust_4:

(Start: 42 @703 has 148 MA's), (66, 826), (82, 865), (91, 883),

Gene: Chikenjars_1 Start: 211, Stop: 468, Start Num: 35

Candidate Starts for Chikenjars_1:

(Start: 30 @196 has 2 MA's), (Start: 35 @211 has 18 MA's), (64, 340), (82, 394),

Gene: Chris_3 Start: 662, Stop: 886, Start Num: 48

Candidate Starts for Chris_3:

(Start: 48 @662 has 3 MA's), (51, 686), (70, 782), (75, 794), (78, 800), (84, 818),

Gene: Collard_3 Start: 516, Stop: 746, Start Num: 42

Candidate Starts for Collard_3:

(Start: 42 @516 has 148 MA's), (44, 537), (Start: 45 @540 has 4 MA's), (66, 627), (70, 636), (75, 648), (97, 741),

Gene: Conley_1 Start: 221, Stop: 445, Start Num: 42

Candidate Starts for Conley_1:

(Start: 42 @221 has 148 MA's), (56, 308), (76, 350),

Gene: CosmicSans_40 Start: 30032, Stop: 29811, Start Num: 42

Candidate Starts for CosmicSans_40:

(Start: 34 @30044 has 8 MA's), (Start: 42 @30032 has 148 MA's), (73, 29912),

Gene: CrimD_4 Start: 703, Stop: 930, Start Num: 42

Candidate Starts for CrimD_4:

(Start: 42 @703 has 148 MA's), (57, 799), (75, 832), (91, 868),

Gene: Crocheter_1 Start: 152, Stop: 469, Start Num: 22

Candidate Starts for Crocheter_1:

(Start: 22 @152 has 2 MA's), (Start: 30 @197 has 2 MA's), (Start: 35 @212 has 18 MA's), (82, 395), (89, 410),

Gene: Crossroads_109 Start: 63279, Stop: 63491, Start Num: 45

Candidate Starts for Crossroads_109:

(Start: 35 @63246 has 18 MA's), (Start: 45 @63279 has 4 MA's), (52, 63321), (53, 63324), (62, 63357), (69, 63384), (70, 63387), (73, 63393), (75, 63399), (76, 63402), (91, 63435),

Gene: Curiosium_5 Start: 989, Stop: 1216, Start Num: 42

Candidate Starts for Curiosium_5:

(25, 938), (32, 974), (Start: 42 @989 has 148 MA's), (57, 1085), (91, 1154),

Gene: Dadosky_3 Start: 542, Stop: 772, Start Num: 42

Candidate Starts for Dadosky_3:

(26, 491), (Start: 42 @542 has 148 MA's), (44, 563), (Start: 45 @566 has 4 MA's), (57, 626), (66, 653), (70, 662), (81, 686), (92, 716), (97, 767),

Gene: Dalmuri_4 Start: 727, Stop: 963, Start Num: 42

Candidate Starts for Dalmuri_4:

(Start: 42 @727 has 148 MA's), (66, 850), (82, 889), (91, 907),

Gene: DarthP_2 Start: 207, Stop: 419, Start Num: 42

Candidate Starts for DarthP_2:

(Start: 42 @207 has 148 MA's), (55, 279), (83, 342),

Gene: Deby_4 Start: 727, Stop: 945, Start Num: 42

Candidate Starts for Deby_4:

(Start: 42 @727 has 148 MA's), (57, 823), (75, 853), (91, 889),

Gene: Devera_4 Start: 703, Stop: 930, Start Num: 42

Candidate Starts for Devera_4:

(Start: 42 @703 has 148 MA's), (57, 799),

Gene: Dmitri_20 Start: 19193, Stop: 19450, Start Num: 45

Candidate Starts for Dmitri_20:

(1, 18281), (6, 18767), (21, 19091), (44, 19190), (Start: 45 @19193 has 4 MA's), (Start: 47 @19211 has 1 MA's), (63, 19316), (71, 19346), (77, 19361),

Gene: Dole_4 Start: 703, Stop: 930, Start Num: 42

Candidate Starts for Dole_4:

(Start: 42 @703 has 148 MA's), (57, 799),

Gene: Douge_110 Start: 62989, Stop: 63255, Start Num: 35

Candidate Starts for Douge_110:

(Start: 35 @62989 has 18 MA's), (Start: 45 @63022 has 4 MA's), (55, 63082), (59, 63106), (66, 63142), (70, 63151), (73, 63157), (82, 63181), (91, 63199),

Gene: DrHayes_4 Start: 691, Stop: 903, Start Num: 42

Candidate Starts for DrHayes_4:

(Start: 42 @691 has 148 MA's), (Start: 45 @715 has 4 MA's), (87, 838),

Gene: Duffington_1 Start: 211, Stop: 468, Start Num: 35

Candidate Starts for Duffington_1:

(Start: 30 @196 has 2 MA's), (Start: 35 @211 has 18 MA's), (64, 340), (82, 394),

Gene: Durfee_4 Start: 727, Stop: 963, Start Num: 42

Candidate Starts for Durfee_4:

(Start: 42 @727 has 148 MA's), (66, 850), (82, 889), (91, 907),

Gene: DyoEdafos_114 Start: 63914, Stop: 64108, Start Num: 45

Candidate Starts for DyoEdafos_114:

(Start: 35 @63878 has 18 MA's), (Start: 45 @63914 has 4 MA's), (56, 63977), (57, 63986), (70, 64004), (73, 64010), (82, 64034), (91, 64052),

Gene: Eddiemania_1 Start: 211, Stop: 468, Start Num: 35

Candidate Starts for Eddiemania_1:

(Start: 22 @151 has 2 MA's), (Start: 30 @196 has 2 MA's), (Start: 35 @211 has 18 MA's), (64, 340), (82, 394),

Gene: Edugator_3 Start: 542, Stop: 772, Start Num: 42

Candidate Starts for Edugator_3:

(26, 491), (Start: 42 @542 has 148 MA's), (44, 563), (Start: 45 @566 has 4 MA's), (57, 626), (66, 653), (70, 662), (81, 686), (92, 716), (97, 767),

Gene: Efra2_4 Start: 696, Stop: 908, Start Num: 42

Candidate Starts for Efra2_4:

(Start: 42 @696 has 148 MA's), (Start: 48 @741 has 3 MA's), (87, 843),

Gene: EhyElimayoE_16 Start: 8275, Stop: 8580, Start Num: 37

Candidate Starts for EhyElimayoE_16:

(2, 7633), (3, 7645), (4, 7672), (28, 8239), (Start: 37 @8275 has 6 MA's), (Start: 45 @8308 has 4 MA's), (50, 8347), (60, 8416), (65, 8431), (95, 8539), (96, 8551),

Gene: Ekdilam_2 Start: 206, Stop: 415, Start Num: 42

Candidate Starts for Ekdilam_2:

(Start: 42 @206 has 148 MA's),

Gene: Ellie_2 Start: 192, Stop: 413, Start Num: 42

Candidate Starts for Ellie_2:

(Start: 42 @192 has 148 MA's), (57, 282), (70, 300), (75, 312),

Gene: Emerson_4 Start: 727, Stop: 960, Start Num: 42

Candidate Starts for Emerson_4:

(Start: 42 @727 has 148 MA's), (56, 814), (75, 868), (82, 886), (91, 904),

Gene: EndAve_1 Start: 211, Stop: 468, Start Num: 35

Candidate Starts for EndAve_1:

(Start: 30 @196 has 2 MA's), (Start: 35 @211 has 18 MA's), (64, 340), (82, 394),

Gene: Estes_101 Start: 56269, Stop: 56514, Start Num: 41

Candidate Starts for Estes_101:

(23, 56203), (Start: 41 @56269 has 5 MA's), (70, 56410), (75, 56422), (76, 56425), (82, 56440), (91, 56458),

Gene: Fefferhead_2 Start: 192, Stop: 413, Start Num: 42
Candidate Starts for Fefferhead_2:
(Start: 42 @192 has 148 MA's), (57, 282), (70, 300), (75, 312),

Gene: Feyre_3 Start: 517, Stop: 747, Start Num: 42
Candidate Starts for Feyre_3:
(Start: 42 @517 has 148 MA's), (44, 538), (Start: 45 @541 has 4 MA's), (66, 628), (70, 637), (75, 649),
(87, 682), (97, 742),

Gene: Figliar_1 Start: 196, Stop: 468, Start Num: 30
Candidate Starts for Figliar_1:
(Start: 30 @196 has 2 MA's), (Start: 35 @211 has 18 MA's), (64, 340), (82, 394),

Gene: FortCran_1 Start: 221, Stop: 445, Start Num: 42
Candidate Starts for FortCran_1:
(Start: 42 @221 has 148 MA's), (55, 305),

Gene: Frankenweenie_22 Start: 10117, Stop: 10422, Start Num: 37
Candidate Starts for Frankenweenie_22:
(28, 10081), (Start: 37 @10117 has 6 MA's), (Start: 45 @10150 has 4 MA's), (60, 10258), (65, 10273),
(95, 10381), (96, 10393),

Gene: Ganymede_4 Start: 703, Stop: 939, Start Num: 42
Candidate Starts for Ganymede_4:
(Start: 42 @703 has 148 MA's), (66, 826), (82, 865), (91, 883),

Gene: GardenSalsa_101 Start: 56348, Stop: 56605, Start Num: 41
Candidate Starts for GardenSalsa_101:
(23, 56282), (Start: 41 @56348 has 5 MA's), (70, 56501), (75, 56513), (82, 56531), (91, 56549),

Gene: Gengar_3 Start: 542, Stop: 772, Start Num: 42
Candidate Starts for Gengar_3:
(26, 491), (Start: 42 @542 has 148 MA's), (44, 563), (Start: 45 @566 has 4 MA's), (66, 653), (70, 662),
(75, 674), (97, 767),

Gene: Gill_1 Start: 221, Stop: 445, Start Num: 42
Candidate Starts for Gill_1:
(Start: 42 @221 has 148 MA's),

Gene: Gollum_40 Start: 30042, Stop: 29809, Start Num: 34
Candidate Starts for Gollum_40:
(Start: 34 @30042 has 8 MA's), (Start: 42 @30030 has 148 MA's), (73, 29910),

Gene: Gravy_1 Start: 221, Stop: 445, Start Num: 42
Candidate Starts for Gravy_1:
(Start: 42 @221 has 148 MA's),

Gene: Guanica15_4 Start: 699, Stop: 923, Start Num: 42
Candidate Starts for Guanica15_4:
(Start: 42 @699 has 148 MA's), (Start: 45 @723 has 4 MA's), (58, 786), (87, 858), (88, 861),

Gene: Guillsminger_3 Start: 517, Stop: 747, Start Num: 42
Candidate Starts for Guillsminger_3:

(Start: 42 @517 has 148 MA's), (44, 538), (Start: 45 @541 has 4 MA's), (66, 628), (70, 637), (75, 649), (87, 682), (97, 742),

Gene: Hammy_2 Start: 207, Stop: 416, Start Num: 42
Candidate Starts for Hammy_2:
(Start: 42 @207 has 148 MA's), (Start: 48 @249 has 3 MA's),

Gene: HedwigODU_4 Start: 727, Stop: 954, Start Num: 42
Candidate Starts for HedwigODU_4:
(Start: 42 @727 has 148 MA's), (57, 823), (91, 892),

Gene: Heftyboy_3 Start: 538, Stop: 768, Start Num: 42
Candidate Starts for Heftyboy_3:
(26, 487), (Start: 42 @538 has 148 MA's), (44, 559), (Start: 45 @562 has 4 MA's), (66, 649), (70, 658), (75, 670), (87, 703), (97, 763),

Gene: Hiro_40 Start: 30292, Stop: 30071, Start Num: 42
Candidate Starts for Hiro_40:
(Start: 34 @30304 has 8 MA's), (Start: 42 @30292 has 148 MA's), (73, 30172),

Gene: Homura_4 Start: 727, Stop: 963, Start Num: 42
Candidate Starts for Homura_4:
(Start: 42 @727 has 148 MA's), (66, 850), (82, 889), (91, 907),

Gene: Hortihabitatio_1 Start: 220, Stop: 444, Start Num: 42
Candidate Starts for Hortihabitatio_1:
(Start: 42 @220 has 148 MA's),

Gene: Hurricane_2 Start: 191, Stop: 418, Start Num: 42
Candidate Starts for Hurricane_2:
(Start: 42 @191 has 148 MA's), (57, 287), (75, 320),

Gene: Hydrus_1 Start: 211, Stop: 468, Start Num: 35
Candidate Starts for Hydrus_1:
(Start: 22 @151 has 2 MA's), (Start: 30 @196 has 2 MA's), (Start: 35 @211 has 18 MA's), (64, 340), (82, 394),

Gene: Hyperbowlee_4 Start: 727, Stop: 963, Start Num: 42
Candidate Starts for Hyperbowlee_4:
(Start: 42 @727 has 148 MA's), (66, 850), (82, 889), (91, 907),

Gene: Illumine_4 Start: 703, Stop: 930, Start Num: 42
Candidate Starts for Illumine_4:
(Start: 42 @703 has 148 MA's), (57, 799),

Gene: Inky_4 Start: 727, Stop: 963, Start Num: 42
Candidate Starts for Inky_4:
(Start: 42 @727 has 148 MA's), (66, 850), (82, 889), (91, 907),

Gene: InvictusManeo_3 Start: 542, Stop: 754, Start Num: 42
Candidate Starts for InvictusManeo_3:
(Start: 42 @542 has 148 MA's), (57, 626), (75, 659), (85, 683), (87, 692), (88, 695), (92, 701),

Gene: JAWS_4 Start: 727, Stop: 954, Start Num: 40
Candidate Starts for JAWS_4:
(Start: 40 @727 has 1 MA's), (57, 823), (91, 892),

Gene: Jarvi_4 Start: 727, Stop: 963, Start Num: 42
Candidate Starts for Jarvi_4:
(Start: 42 @727 has 148 MA's), (66, 850), (82, 889), (91, 907),

Gene: Jayhawk_4 Start: 727, Stop: 954, Start Num: 42
Candidate Starts for Jayhawk_4:
(Start: 42 @727 has 148 MA's), (57, 823), (91, 892),

Gene: Jeckyll_4 Start: 727, Stop: 963, Start Num: 42
Candidate Starts for Jeckyll_4:
(Start: 42 @727 has 148 MA's), (66, 850), (82, 889), (91, 907),

Gene: Jodelie19_1 Start: 199, Stop: 468, Start Num: 31
Candidate Starts for Jodelie19_1:
(Start: 30 @196 has 2 MA's), (Start: 31 @199 has 2 MA's), (Start: 35 @211 has 18 MA's), (64, 340),
(82, 394),

Gene: Joy99_4 Start: 703, Stop: 930, Start Num: 42
Candidate Starts for Joy99_4:
(Start: 42 @703 has 148 MA's), (57, 799), (91, 868),

Gene: JustBecause_14 Start: 7426, Stop: 7731, Start Num: 37
Candidate Starts for JustBecause_14:
(28, 7390), (Start: 37 @7426 has 6 MA's), (Start: 45 @7459 has 4 MA's), (56, 7534), (57, 7543), (67,
7597), (96, 7702),

Gene: Kela_14 Start: 7417, Stop: 7722, Start Num: 37
Candidate Starts for Kela_14:
(28, 7381), (Start: 37 @7417 has 6 MA's), (Start: 45 @7450 has 4 MA's), (56, 7525), (57, 7534), (60,
7558), (67, 7588), (96, 7693),

Gene: Kenosha_1 Start: 212, Stop: 469, Start Num: 35
Candidate Starts for Kenosha_1:
(Start: 22 @152 has 2 MA's), (Start: 30 @197 has 2 MA's), (Start: 35 @212 has 18 MA's), (82, 395),

Gene: Kerry_1 Start: 221, Stop: 445, Start Num: 42
Candidate Starts for Kerry_1:
(Start: 42 @221 has 148 MA's),

Gene: Keshu_2 Start: 191, Stop: 412, Start Num: 42
Candidate Starts for Keshu_2:
(Start: 42 @191 has 148 MA's), (70, 299),

Gene: KiSi_3 Start: 624, Stop: 842, Start Num: 42
Candidate Starts for KiSi_3:
(Start: 42 @624 has 148 MA's), (57, 720), (68, 738), (75, 750), (82, 768), (92, 786), (94, 801),

Gene: Kiko_21 Start: 18413, Stop: 18652, Start Num: 47
Candidate Starts for Kiko_21:

(16, 18278), (Start: 47 @18413 has 1 MA's), (57, 18497), (63, 18518), (71, 18548), (77, 18563), (90, 18596),

Gene: Kradal_16 Start: 8275, Stop: 8580, Start Num: 37

Candidate Starts for Kradal_16:

(2, 7633), (3, 7645), (4, 7672), (28, 8239), (Start: 37 @8275 has 6 MA's), (Start: 45 @8308 has 4 MA's), (50, 8347), (60, 8416), (65, 8431), (95, 8539), (96, 8551),

Gene: Kratio_2 Start: 299, Stop: 511, Start Num: 41

Candidate Starts for Kratio_2:

(Start: 41 @299 has 5 MA's), (57, 383), (75, 416), (85, 440), (87, 449), (88, 452), (92, 458),

Gene: Krishelle_40 Start: 30392, Stop: 30171, Start Num: 42

Candidate Starts for Krishelle_40:

(Start: 34 @30404 has 8 MA's), (Start: 42 @30392 has 148 MA's), (73, 30272),

Gene: Kromp_24 Start: 21907, Stop: 22215, Start Num: 31

Candidate Starts for Kromp_24:

(9, 21604), (11, 21637), (14, 21817), (Start: 31 @21907 has 2 MA's), (43, 21934), (Start: 45 @21961 has 4 MA's), (66, 22093), (93, 22159),

Gene: LastHope_4 Start: 698, Stop: 925, Start Num: 42

Candidate Starts for LastHope_4:

(Start: 42 @698 has 148 MA's), (Start: 45 @722 has 4 MA's), (57, 794), (91, 863),

Gene: LaterM_4 Start: 703, Stop: 936, Start Num: 42

Candidate Starts for LaterM_4:

(Start: 42 @703 has 148 MA's), (75, 844), (82, 862),

Gene: LeMond_3 Start: 624, Stop: 842, Start Num: 42

Candidate Starts for LeMond_3:

(10, 324), (Start: 42 @624 has 148 MA's), (57, 720), (68, 738), (75, 750), (82, 768), (92, 786), (94, 801),

Gene: Leston_3 Start: 542, Stop: 772, Start Num: 42

Candidate Starts for Leston_3:

(Start: 42 @542 has 148 MA's), (44, 563), (Start: 45 @566 has 4 MA's), (66, 653), (70, 662), (75, 674),

Gene: Lillie_40 Start: 30032, Stop: 29811, Start Num: 42

Candidate Starts for Lillie_40:

(Start: 34 @30044 has 8 MA's), (Start: 42 @30032 has 148 MA's), (73, 29912),

Gene: LindNT_4 Start: 703, Stop: 930, Start Num: 42

Candidate Starts for LindNT_4:

(Start: 42 @703 has 148 MA's), (57, 799), (75, 832), (91, 868),

Gene: Llorens_4 Start: 727, Stop: 963, Start Num: 42

Candidate Starts for Llorens_4:

(Start: 42 @727 has 148 MA's), (66, 850), (82, 889), (91, 907),

Gene: Lunahalos_4 Start: 727, Stop: 963, Start Num: 42

Candidate Starts for Lunahalos_4:

(Start: 42 @727 has 148 MA's), (66, 850), (82, 889), (91, 907),

Gene: MacnCheese_2 Start: 194, Stop: 415, Start Num: 42
Candidate Starts for MacnCheese_2:
(Start: 42 @194 has 148 MA's), (57, 284), (70, 302), (75, 314), (91, 356),

Gene: Madvan_1 Start: 211, Stop: 468, Start Num: 35
Candidate Starts for Madvan_1:
(15, 130), (Start: 22 @151 has 2 MA's), (Start: 30 @196 has 2 MA's), (Start: 35 @211 has 18 MA's),
(64, 340), (82, 394),

Gene: Magel_1 Start: 221, Stop: 445, Start Num: 42
Candidate Starts for Magel_1:
(Start: 42 @221 has 148 MA's),

Gene: MarkPhew_3 Start: 565, Stop: 789, Start Num: 48
Candidate Starts for MarkPhew_3:
(29, 475), (Start: 48 @565 has 3 MA's), (51, 589), (54, 610), (60, 649), (64, 661), (70, 685), (75, 697),

Gene: MeaningOfLife_4 Start: 703, Stop: 930, Start Num: 42
Candidate Starts for MeaningOfLife_4:
(Start: 42 @703 has 148 MA's), (57, 799), (91, 868),

Gene: Megsy_4 Start: 703, Stop: 930, Start Num: 42
Candidate Starts for Megsy_4:
(Start: 42 @703 has 148 MA's), (57, 799), (75, 832), (91, 868),

Gene: Miryou_3 Start: 517, Stop: 747, Start Num: 42
Candidate Starts for Miryou_3:
(Start: 42 @517 has 148 MA's), (44, 538), (Start: 45 @541 has 4 MA's), (66, 628), (70, 637), (75, 649),
(87, 682), (97, 742),

Gene: MkaliMitinis3_109 Start: 63259, Stop: 63471, Start Num: 45
Candidate Starts for MkaliMitinis3_109:
(Start: 35 @63226 has 18 MA's), (Start: 45 @63259 has 4 MA's), (52, 63301), (53, 63304), (62,
63337), (69, 63364), (70, 63367), (73, 63373), (75, 63379), (76, 63382), (91, 63415),

Gene: MrMagoo_102 Start: 56348, Stop: 56605, Start Num: 41
Candidate Starts for MrMagoo_102:
(23, 56282), (Start: 41 @56348 has 5 MA's), (70, 56501), (75, 56513), (82, 56531), (91, 56549),

Gene: Murucutumbu_4 Start: 703, Stop: 930, Start Num: 42
Candidate Starts for Murucutumbu_4:
(12, 442), (Start: 42 @703 has 148 MA's), (57, 799), (91, 868),

Gene: Mynx_4 Start: 703, Stop: 939, Start Num: 42
Candidate Starts for Mynx_4:
(Start: 42 @703 has 148 MA's), (66, 826), (82, 865), (91, 883),

Gene: Nadmeg_1 Start: 212, Stop: 469, Start Num: 35
Candidate Starts for Nadmeg_1:
(15, 131), (Start: 22 @152 has 2 MA's), (Start: 30 @197 has 2 MA's), (Start: 35 @212 has 18 MA's),
(82, 395),

Gene: Nanosmite_96 Start: 55870, Stop: 56115, Start Num: 42
Candidate Starts for Nanosmite_96:
(17, 55789), (Start: 42 @55870 has 148 MA's), (70, 56011), (82, 56041), (91, 56059),

Gene: Nibb_3 Start: 602, Stop: 826, Start Num: 48
Candidate Starts for Nibb_3:
(29, 491), (Start: 48 @602 has 3 MA's), (54, 647), (60, 686), (64, 698), (70, 722), (75, 734), (80, 743),

Gene: Niklas_4 Start: 742, Stop: 954, Start Num: 42
Candidate Starts for Niklas_4:
(Start: 42 @742 has 148 MA's), (83, 877), (86, 883),

Gene: Nirvana_22 Start: 10337, Stop: 10642, Start Num: 37
Candidate Starts for Nirvana_22:
(28, 10301), (Start: 37 @10337 has 6 MA's), (Start: 45 @10370 has 4 MA's), (50, 10409), (60, 10478),
(65, 10493), (95, 10601), (96, 10613),

Gene: Nithya_1 Start: 196, Stop: 468, Start Num: 30
Candidate Starts for Nithya_1:
(Start: 30 @196 has 2 MA's), (Start: 35 @211 has 18 MA's), (64, 340), (82, 394),

Gene: Odesza_1 Start: 221, Stop: 445, Start Num: 42
Candidate Starts for Odesza_1:
(Start: 42 @221 has 148 MA's),

Gene: OhMyWard_1 Start: 219, Stop: 473, Start Num: 42
Candidate Starts for OhMyWard_1:
(27, 177), (Start: 42 @219 has 148 MA's), (64, 339), (82, 393), (89, 408),

Gene: OkiRoe_3 Start: 517, Stop: 747, Start Num: 42
Candidate Starts for OkiRoe_3:
(Start: 42 @517 has 148 MA's), (44, 538), (Start: 45 @541 has 4 MA's), (66, 628), (70, 637), (75, 649),
(87, 682), (97, 742),

Gene: OlgasClover_1 Start: 211, Stop: 468, Start Num: 35
Candidate Starts for OlgasClover_1:
(Start: 30 @196 has 2 MA's), (Start: 35 @211 has 18 MA's), (64, 340), (82, 394),

Gene: Omnicron_3 Start: 483, Stop: 713, Start Num: 42
Candidate Starts for Omnicron_3:
(26, 432), (Start: 42 @483 has 148 MA's), (66, 594), (70, 603), (72, 606), (75, 615), (87, 648), (92,
657), (94, 672),

Gene: Oscar_3 Start: 624, Stop: 842, Start Num: 42
Candidate Starts for Oscar_3:
(7, 234), (10, 324), (Start: 42 @624 has 148 MA's), (57, 720), (68, 738), (75, 750), (82, 768), (92, 786),
(94, 801),

Gene: Padfoot_4 Start: 727, Stop: 963, Start Num: 42
Candidate Starts for Padfoot_4:
(Start: 42 @727 has 148 MA's), (66, 850), (82, 889), (91, 907),

Gene: Padpat_4 Start: 727, Stop: 960, Start Num: 42

Candidate Starts for Padpat_4:

(Start: 42 @727 has 148 MA's), (56, 814), (75, 868), (82, 886), (91, 904),

Gene: Paola_3 Start: 517, Stop: 747, Start Num: 42

Candidate Starts for Paola_3:

(Start: 42 @517 has 148 MA's), (44, 538), (Start: 45 @541 has 4 MA's), (66, 628), (70, 637), (75, 649), (87, 682), (97, 742),

Gene: Peanam_4 Start: 742, Stop: 954, Start Num: 42

Candidate Starts for Peanam_4:

(Start: 42 @742 has 148 MA's), (83, 877), (86, 883),

Gene: Peel_4 Start: 727, Stop: 963, Start Num: 42

Candidate Starts for Peel_4:

(Start: 42 @727 has 148 MA's), (66, 850), (82, 889), (91, 907),

Gene: Perkunas_1 Start: 221, Stop: 451, Start Num: 42

Candidate Starts for Perkunas_1:

(19, 140), (Start: 42 @221 has 148 MA's),

Gene: Petito_1 Start: 221, Stop: 445, Start Num: 42

Candidate Starts for Petito_1:

(19, 140), (Start: 42 @221 has 148 MA's),

Gene: PhailMary_39 Start: 30366, Stop: 30133, Start Num: 34

Candidate Starts for PhailMary_39:

(Start: 34 @30366 has 8 MA's), (Start: 42 @30354 has 148 MA's), (73, 30234),

Gene: Pharb_2 Start: 188, Stop: 406, Start Num: 42

Candidate Starts for Pharb_2:

(18, 107), (Start: 42 @188 has 148 MA's), (46, 224), (57, 278), (70, 296), (75, 308),

Gene: PhelpsODU_3 Start: 659, Stop: 880, Start Num: 42

Candidate Starts for PhelpsODU_3:

(Start: 42 @659 has 148 MA's), (70, 776), (73, 782), (75, 788), (82, 806),

Gene: Phepper_1 Start: 211, Stop: 468, Start Num: 35

Candidate Starts for Phepper_1:

(Start: 35 @211 has 18 MA's), (82, 394),

Gene: Pherobrine_1 Start: 220, Stop: 441, Start Num: 42

Candidate Starts for Pherobrine_1:

(Start: 42 @220 has 148 MA's), (97, 433),

Gene: Phrank_3 Start: 664, Stop: 888, Start Num: 42

Candidate Starts for Phrank_3:

(Start: 42 @664 has 148 MA's), (57, 760), (68, 778), (75, 790), (91, 826),

Gene: Phrankenstein_40 Start: 29990, Stop: 29757, Start Num: 34

Candidate Starts for Phrankenstein_40:

(Start: 34 @29990 has 8 MA's), (Start: 42 @29978 has 148 MA's), (73, 29858),

Gene: Piatt_4 Start: 727, Stop: 963, Start Num: 42

Candidate Starts for Piatt_4:

(Start: 42 @727 has 148 MA's), (66, 850), (82, 889), (91, 907),

Gene: Pixie_2 Start: 191, Stop: 415, Start Num: 42

Candidate Starts for Pixie_2:

(Start: 42 @191 has 148 MA's), (57, 287), (75, 320), (91, 356),

Gene: Pokerus_4 Start: 703, Stop: 930, Start Num: 42

Candidate Starts for Pokerus_4:

(Start: 42 @703 has 148 MA's), (57, 799), (75, 832), (91, 868),

Gene: Prithvi_4 Start: 703, Stop: 930, Start Num: 42

Candidate Starts for Prithvi_4:

(Start: 42 @703 has 148 MA's), (57, 799), (75, 832), (91, 868),

Gene: Psycho_3 Start: 542, Stop: 772, Start Num: 42

Candidate Starts for Psycho_3:

(26, 491), (Start: 42 @542 has 148 MA's), (44, 563), (Start: 45 @566 has 4 MA's), (57, 626), (66, 653), (70, 662), (81, 686), (92, 716), (97, 767),

Gene: QuincyRose_4 Start: 703, Stop: 939, Start Num: 42

Candidate Starts for QuincyRose_4:

(Start: 42 @703 has 148 MA's), (66, 826), (82, 865), (91, 883),

Gene: RER2_33 Start: 26904, Stop: 26683, Start Num: 42

Candidate Starts for RER2_33:

(Start: 34 @26916 has 8 MA's), (Start: 42 @26904 has 148 MA's), (73, 26784),

Gene: Ramen_4 Start: 727, Stop: 954, Start Num: 42

Candidate Starts for Ramen_4:

(Start: 42 @727 has 148 MA's), (57, 823), (91, 892),

Gene: Rando14_3 Start: 618, Stop: 842, Start Num: 42

Candidate Starts for Rando14_3:

(Start: 42 @618 has 148 MA's), (57, 714), (75, 744), (82, 762),

Gene: Rapunzel97_4 Start: 727, Stop: 954, Start Num: 42

Candidate Starts for Rapunzel97_4:

(Start: 42 @727 has 148 MA's), (57, 823), (91, 892),

Gene: Rasputin_40 Start: 30014, Stop: 29781, Start Num: 34

Candidate Starts for Rasputin_40:

(Start: 34 @30014 has 8 MA's), (Start: 42 @30002 has 148 MA's), (73, 29882),

Gene: Reindeer_91 Start: 55528, Stop: 55773, Start Num: 42

Candidate Starts for Reindeer_91:

(21, 55456), (Start: 42 @55528 has 148 MA's), (70, 55669), (89, 55714),

Gene: Rey_102 Start: 56267, Stop: 56512, Start Num: 41

Candidate Starts for Rey_102:

(Start: 41 @56267 has 5 MA's), (70, 56408), (82, 56438),

Gene: Rhodalysa_40 Start: 30032, Stop: 29811, Start Num: 42

Candidate Starts for Rhodalysa_40:

(Start: 34 @30044 has 8 MA's), (Start: 42 @30032 has 148 MA's), (73, 29912),

Gene: Richie_97 Start: 52968, Stop: 53210, Start Num: 38

Candidate Starts for Richie_97:

(Start: 38 @52968 has 2 MA's), (58, 53073), (82, 53136),

Gene: Rickmore_1 Start: 211, Stop: 435, Start Num: 35

Candidate Starts for Rickmore_1:

(Start: 30 @196 has 2 MA's), (Start: 35 @211 has 18 MA's), (66, 331), (82, 364),

Gene: Roney_1 Start: 221, Stop: 445, Start Num: 42

Candidate Starts for Roney_1:

(Start: 42 @221 has 148 MA's),

Gene: Rosmarinus_4 Start: 727, Stop: 963, Start Num: 42

Candidate Starts for Rosmarinus_4:

(Start: 42 @727 has 148 MA's), (66, 850), (82, 889), (91, 907),

Gene: Runhaar_1 Start: 211, Stop: 468, Start Num: 35

Candidate Starts for Runhaar_1:

(15, 130), (Start: 22 @151 has 2 MA's), (Start: 30 @196 has 2 MA's), (Start: 35 @211 has 18 MA's), (64, 340), (82, 394),

Gene: SamuelLPlaqson_4 Start: 691, Stop: 903, Start Num: 42

Candidate Starts for SamuelLPlaqson_4:

(Start: 42 @691 has 148 MA's), (Start: 45 @715 has 4 MA's), (87, 838),

Gene: Satis_16 Start: 8271, Stop: 8576, Start Num: 37

Candidate Starts for Satis_16:

(2, 7629), (3, 7641), (4, 7668), (28, 8235), (Start: 37 @8271 has 6 MA's), (Start: 45 @8304 has 4 MA's), (50, 8343), (60, 8412), (65, 8427), (95, 8535), (96, 8547),

Gene: Scarlett_3 Start: 624, Stop: 842, Start Num: 42

Candidate Starts for Scarlett_3:

(10, 324), (Start: 42 @624 has 148 MA's), (57, 720), (68, 738), (75, 750), (82, 768), (92, 786), (94, 801),

Gene: Schwartz33_1 Start: 220, Stop: 471, Start Num: 42

Candidate Starts for Schwartz33_1:

(24, 157), (Start: 34 @208 has 8 MA's), (36, 211), (Start: 42 @220 has 148 MA's), (82, 394), (89, 409),

Gene: Secretariat_1 Start: 244, Stop: 525, Start Num: 34

Candidate Starts for Secretariat_1:

(Start: 34 @244 has 8 MA's), (Start: 42 @256 has 148 MA's), (57, 352), (67, 394), (89, 445),

Gene: Shaobing_4 Start: 742, Stop: 954, Start Num: 42

Candidate Starts for Shaobing_4:

(Start: 42 @742 has 148 MA's), (83, 877), (86, 883),

Gene: ShedlockHolmes_2 Start: 191, Stop: 418, Start Num: 42

Candidate Starts for ShedlockHolmes_2:

(Start: 42 @191 has 148 MA's), (57, 287), (68, 308), (75, 320),

Gene: ShiaSurprise_4 Start: 727, Stop: 963, Start Num: 42
Candidate Starts for ShiaSurprise_4:
(Start: 42 @727 has 148 MA's), (66, 850), (82, 889), (91, 907),

Gene: Sicarius2_69 Start: 42234, Stop: 42470, Start Num: 35
Candidate Starts for Sicarius2_69:
(20, 42162), (Start: 35 @42234 has 18 MA's), (82, 42396), (90, 42414),

Gene: SlimJimmy_90 Start: 55164, Stop: 55394, Start Num: 42
Candidate Starts for SlimJimmy_90:
(Start: 42 @55164 has 148 MA's), (57, 55260), (82, 55320),

Gene: Slimphazie_4 Start: 727, Stop: 954, Start Num: 42
Candidate Starts for Slimphazie_4:
(Start: 42 @727 has 148 MA's), (57, 823), (91, 892),

Gene: SoSeph_3 Start: 538, Stop: 768, Start Num: 42
Candidate Starts for SoSeph_3:
(26, 487), (Start: 42 @538 has 148 MA's), (44, 559), (Start: 45 @562 has 4 MA's), (66, 649), (70, 658),
(75, 670), (87, 703), (97, 763),

Gene: Spock_4 Start: 727, Stop: 963, Start Num: 42
Candidate Starts for Spock_4:
(Start: 42 @727 has 148 MA's), (66, 850), (82, 889), (91, 907),

Gene: Stinson_4 Start: 703, Stop: 936, Start Num: 42
Candidate Starts for Stinson_4:
(Start: 42 @703 has 148 MA's), (75, 844), (82, 862),

Gene: Sulley_4 Start: 727, Stop: 945, Start Num: 42
Candidate Starts for Sulley_4:
(Start: 42 @727 has 148 MA's), (57, 823), (75, 853), (91, 889),

Gene: Swann_40 Start: 30042, Stop: 29809, Start Num: 34
Candidate Starts for Swann_40:
(Start: 34 @30042 has 8 MA's), (Start: 42 @30030 has 148 MA's), (73, 29910),

Gene: TBond007_2 Start: 191, Stop: 415, Start Num: 42
Candidate Starts for TBond007_2:
(Start: 42 @191 has 148 MA's), (57, 287), (75, 320), (91, 356),

Gene: TWAMP_40 Start: 30032, Stop: 29811, Start Num: 42
Candidate Starts for TWAMP_40:
(Start: 34 @30044 has 8 MA's), (Start: 42 @30032 has 148 MA's), (73, 29912),

Gene: Tachez_4 Start: 703, Stop: 939, Start Num: 42
Candidate Starts for Tachez_4:
(Start: 42 @703 has 148 MA's), (66, 826), (82, 865), (91, 883),

Gene: TaiwanKao_4 Start: 703, Stop: 930, Start Num: 42
Candidate Starts for TaiwanKao_4:
(Start: 42 @703 has 148 MA's), (57, 799), (75, 832), (91, 868),

Gene: Tanis_1 Start: 221, Stop: 445, Start Num: 42

Candidate Starts for Tanis_1:

(Start: 42 @221 has 148 MA's),

Gene: TenaciousP_1 Start: 211, Stop: 468, Start Num: 35

Candidate Starts for TenaciousP_1:

(Start: 30 @196 has 2 MA's), (Start: 35 @211 has 18 MA's), (64, 340), (82, 394),

Gene: Thyatira_3 Start: 517, Stop: 747, Start Num: 42

Candidate Starts for Thyatira_3:

(Start: 42 @517 has 148 MA's), (44, 538), (Start: 45 @541 has 4 MA's), (66, 628), (70, 637), (75, 649), (87, 682), (97, 742),

Gene: Tierra_3 Start: 665, Stop: 889, Start Num: 42

Candidate Starts for Tierra_3:

(Start: 42 @665 has 148 MA's), (57, 761), (68, 779), (75, 791), (91, 827),

Gene: TiniBug_4 Start: 691, Stop: 903, Start Num: 42

Candidate Starts for TiniBug_4:

(Start: 42 @691 has 148 MA's), (Start: 45 @715 has 4 MA's), (87, 838),

Gene: Tiri_4 Start: 703, Stop: 930, Start Num: 42

Candidate Starts for Tiri_4:

(Start: 42 @703 has 148 MA's), (61, 814), (82, 853),

Gene: Topper_4 Start: 727, Stop: 963, Start Num: 42

Candidate Starts for Topper_4:

(Start: 42 @727 has 148 MA's), (66, 850), (82, 889), (91, 907),

Gene: TreyKay_4 Start: 703, Stop: 930, Start Num: 42

Candidate Starts for TreyKay_4:

(Start: 42 @703 has 148 MA's), (57, 799), (75, 832), (91, 868),

Gene: TribbleTrouble_2 Start: 194, Stop: 412, Start Num: 42

Candidate Starts for TribbleTrouble_2:

(Start: 42 @194 has 148 MA's), (57, 290), (68, 308), (75, 320), (91, 356),

Gene: TruffulaTree_4 Start: 727, Stop: 954, Start Num: 42

Candidate Starts for TruffulaTree_4:

(Start: 42 @727 has 148 MA's), (57, 823), (91, 892),

Gene: Twitch_4 Start: 727, Stop: 963, Start Num: 42

Candidate Starts for Twitch_4:

(Start: 42 @727 has 148 MA's), (66, 850), (82, 889), (91, 907),

Gene: Unicorn_3 Start: 659, Stop: 880, Start Num: 42

Candidate Starts for Unicorn_3:

(Start: 42 @659 has 148 MA's), (70, 776), (73, 782), (75, 788), (82, 806),

Gene: Untouchable_1 Start: 152, Stop: 469, Start Num: 22

Candidate Starts for Untouchable_1:

(Start: 22 @152 has 2 MA's), (Start: 30 @197 has 2 MA's), (Start: 35 @212 has 18 MA's), (82, 395), (89, 410),

Gene: Urkel_4 Start: 691, Stop: 903, Start Num: 42
Candidate Starts for Urkel_4:
(Start: 42 @691 has 148 MA's), (Start: 45 @715 has 4 MA's), (87, 838),

Gene: Validus_3 Start: 477, Stop: 689, Start Num: 42
Candidate Starts for Validus_3:
(13, 333), (Start: 42 @477 has 148 MA's), (74, 588),

Gene: VanLee_69 Start: 43001, Stop: 43234, Start Num: 38
Candidate Starts for VanLee_69:
(5, 42515), (8, 42659), (Start: 38 @43001 has 2 MA's), (75, 43142), (91, 43178),

Gene: Vardy_1 Start: 211, Stop: 468, Start Num: 35
Candidate Starts for Vardy_1:
(Start: 22 @151 has 2 MA's), (Start: 30 @196 has 2 MA's), (Start: 35 @211 has 18 MA's), (64, 340), (82, 394),

Gene: Veliki_4 Start: 727, Stop: 963, Start Num: 42
Candidate Starts for Veliki_4:
(Start: 42 @727 has 148 MA's), (66, 850), (82, 889), (91, 907),

Gene: Waterfoul_3 Start: 538, Stop: 768, Start Num: 42
Candidate Starts for Waterfoul_3:
(26, 487), (Start: 42 @538 has 148 MA's), (44, 559), (Start: 45 @562 has 4 MA's), (66, 649), (70, 658), (75, 670), (87, 703), (97, 763),

Gene: Wyborn_68 Start: 42933, Stop: 43205, Start Num: 35
Candidate Starts for Wyborn_68:
(20, 42861), (Start: 35 @42933 has 18 MA's), (49, 43008), (56, 43053), (57, 43062), (62, 43080), (79, 43110), (90, 43146),

Gene: YoureAdopted_4 Start: 703, Stop: 930, Start Num: 42
Candidate Starts for YoureAdopted_4:
(Start: 42 @703 has 148 MA's), (57, 799), (91, 868),

Gene: Yuna_4 Start: 807, Stop: 1034, Start Num: 39
Candidate Starts for Yuna_4:
(Start: 39 @807 has 1 MA's), (57, 906), (68, 930), (75, 942),

Gene: Yunkel11_4 Start: 699, Stop: 923, Start Num: 42
Candidate Starts for Yunkel11_4:
(Start: 42 @699 has 148 MA's), (Start: 45 @723 has 4 MA's), (58, 786), (87, 858), (88, 861),

Gene: Zabiza_4 Start: 727, Stop: 954, Start Num: 42
Candidate Starts for Zabiza_4:
(Start: 42 @727 has 148 MA's), (57, 823), (91, 892),

Gene: Zavala_4 Start: 703, Stop: 939, Start Num: 42
Candidate Starts for Zavala_4:
(Start: 42 @703 has 148 MA's), (66, 826), (82, 865), (91, 883),

Gene: Zeph_1 Start: 211, Stop: 468, Start Num: 35

Candidate Starts for Zeph_1:

(Start: 22 @151 has 2 MA's), (Start: 30 @196 has 2 MA's), (Start: 35 @211 has 18 MA's), (64, 340),
(82, 394),