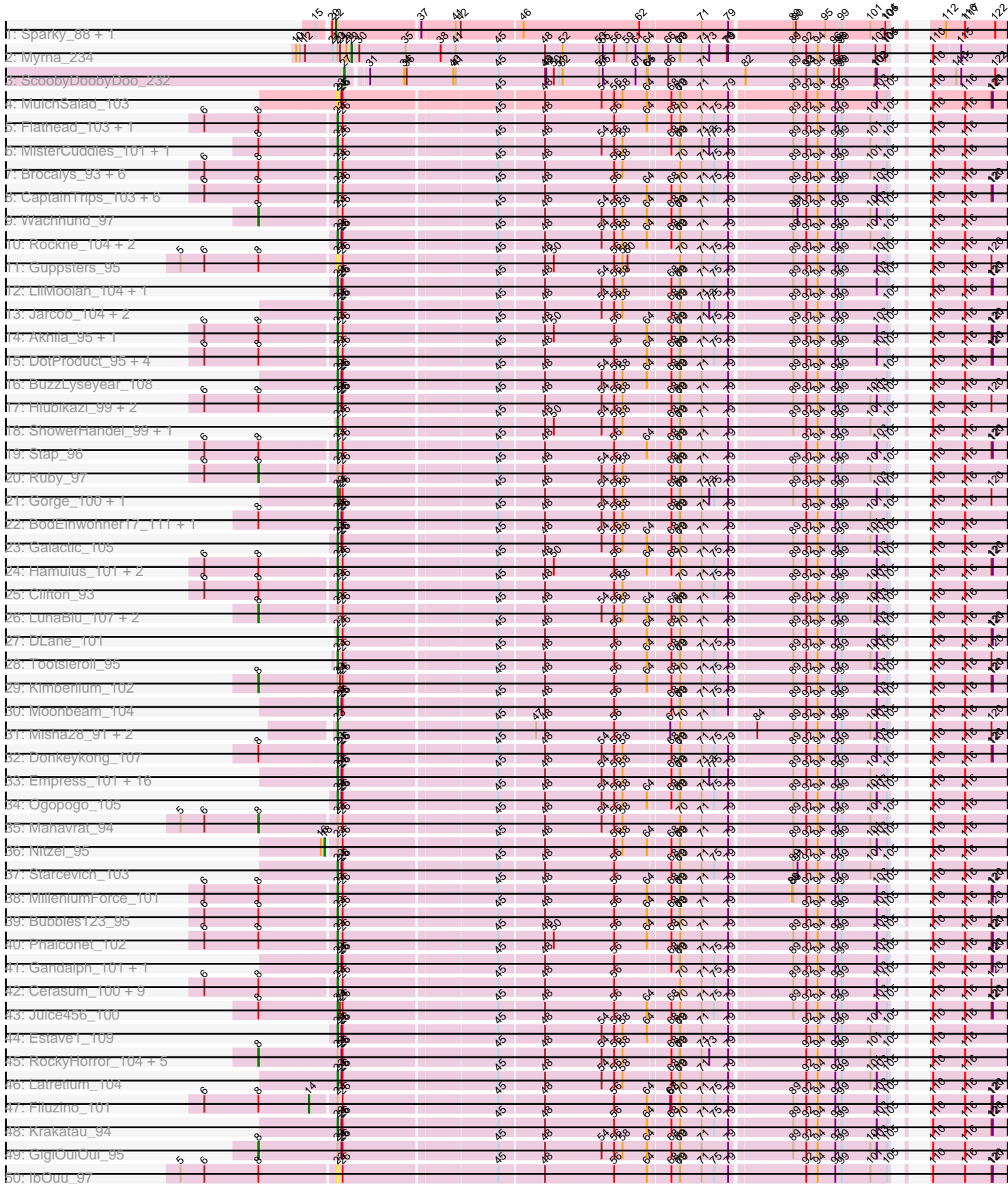
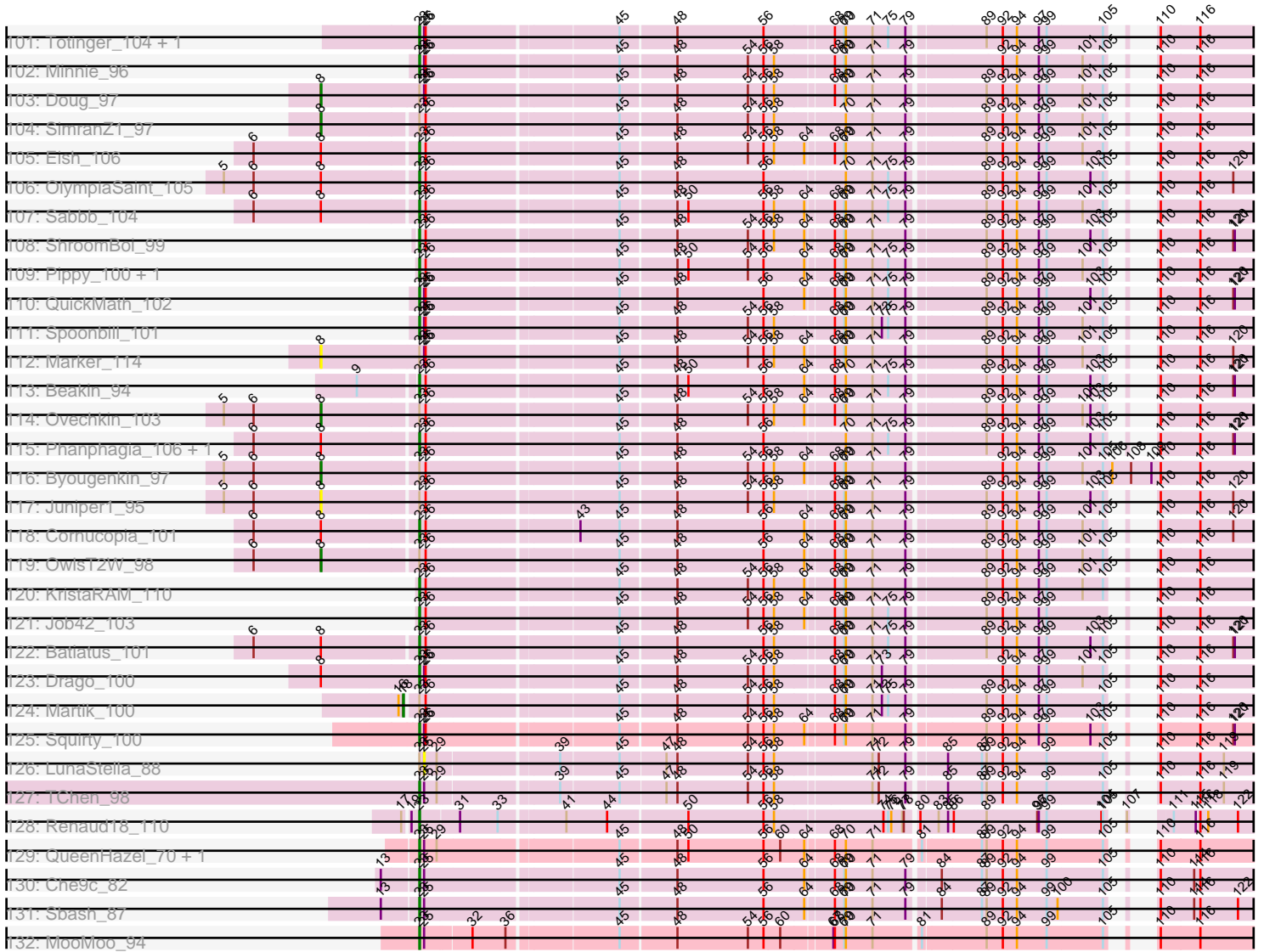


Pham 157577



Pham 157577



Note: Tracks are now grouped by subcluster and scaled. Switching in subcluster is indicated by changes in track color. Track scale is now set by default to display the region 30 bp upstream of start 1 to 30 bp downstream of the last possible start. If this default region is judged to be packed too tightly with annotated starts, the track will be further scaled to only show that region of the ORF with annotated starts. This action will be indicated by adding "Zoomed" to the title. For starts, yellow indicates the location of called starts comprised solely of Glimmer/GeneMark auto-annotations, green indicates the location of called starts with at least 1 manual gene annotation.

Pham 157577 Report

This analysis was run 04/13/24 on database version 558.

Pham number 157577 has 219 members, 20 are drafts.

Phages represented in each track:

- Track 1 : Sparky_88, Farewell_90
- Track 2 : Myrna_234
- Track 3 : ScoobyDoobyDoo_232
- Track 4 : MulchSalad_103
- Track 5 : Flathead_103, Mozy_105
- Track 6 : MisterCuddles_101, Girr_100
- Track 7 : Brocalys_93, LastJedi_92, Lizziana_102, Priscilla_102, SwagPiggett_103, NormanBulbieJr_99, Koella_94
- Track 8 : CaptainTrips_103, PhesterPhotato_104, Seagreen_102, Mova_103, Melissauren88_91, DosHalletts_101, Fruitloop_99
- Track 9 : Wachhund_97
- Track 10 : Rockne_104, PMC_100, Plumbus_100
- Track 11 : Guppsters_95
- Track 12 : LilMoolah_104, Nivrat_101
- Track 13 : Jarcob_104, ShiLan_104, Mattes_102
- Track 14 : Akhila_95, MilanaBonita_94
- Track 15 : DotProduct_95, SG4_102, Chuckly_98, Royals2015_105, Whatsapiecost_95
- Track 16 : BuzzLyseyear_108
- Track 17 : Hlubikazi_99, Mandlovu_99, Strokeseat_99
- Track 18 : ShowerHandel_99, James_105
- Track 19 : Stap_96
- Track 20 : Ruby_97
- Track 21 : Gorge_100, Saal_99
- Track 22 : BodEinwohner17_111, BlueCrab_104
- Track 23 : Galactic_105
- Track 24 : Hamulus_101, Ms6_103, LittleShirley_108
- Track 25 : Clifton_93
- Track 26 : LunaBlu_107, Ibhubesi_97, Harley_102
- Track 27 : DLane_101
- Track 28 : Tootsieroll_95
- Track 29 : Kimberlium_102
- Track 30 : Moonbeam_104
- Track 31 : Misha28_91, Piper2020_96, TootsiePop_91
- Track 32 : Donkeykong_107
- Track 33 : Empress_101, Daenerys_99, Dorothy_102, Sassafras_103, Inventum_99, KingMidas_101, JoeyJr_104, Leperchaun_103, PHappiness_101,

Polka14_105, Nimbo_93, Geralt_94, OldBen_98, RitaG_100, RedBird_102,
Deb65_93, Scottish_101

- Track 34 : Ogopogo_105
- Track 35 : Mahavrat_94
- Track 36 : Nitzel_95
- Track 37 : Starcevich_103
- Track 38 : MilleniumForce_101
- Track 39 : Bubbles123_95
- Track 40 : Phalconet_102
- Track 41 : Gandalph_101, EleanorGeorge_105
- Track 42 : Cerasum_100, Sarma624_103, Coco12_102, Rita_101, Bipolar_103,
Kingsley_110, Kenuha5_93, Velveteen_98, BigPhil_98, Emma_106
- Track 43 : Juice456_100
- Track 44 : Estave1_109
- Track 45 : RockyHorror_104, DaWorst_100, Lorde_103, Mantra_98,
UncleRicky_100, Enby_104
- Track 46 : Latretium_104
- Track 47 : Filuzino_101
- Track 48 : Krakatau_94
- Track 49 : GigiOuiOui_95
- Track 50 : IbOuu_97
- Track 51 : GUmbie_100
- Track 52 : Quico_110, Girafales_110
- Track 53 : ByChance_92
- Track 54 : Ramsey_106
- Track 55 : BobaPhett_104
- Track 56 : SuperGrey_100
- Track 57 : Alexphander_102
- Track 58 : DirtMcgirt_101
- Track 59 : ArcusAngelus_101
- Track 60 : Ardmore_85
- Track 61 : Spikelee_101
- Track 62 : Fancypants_108, Eradicator_92, DaddyRickover_103, Pollywog_103
- Track 63 : Aubs_101, Philus_105
- Track 64 : Crumble_95
- Track 65 : Frankie_100
- Track 66 : DillTech15_107
- Track 67 : VRedHorse_102
- Track 68 : Bobi_102
- Track 69 : Yorick_97
- Track 70 : Madiba_100
- Track 71 : Florinda_113
- Track 72 : Llij_96
- Track 73 : Phatniss_98
- Track 74 : ChickenDinner_95, DocMcStuffins_88
- Track 75 : Boomer_102, Hades_98, MinionDave_99
- Track 76 : StAnnes_106
- Track 77 : SiSi_96, Veteran_91
- Track 78 : Awesomesauce_93
- Track 79 : FreddyB_110
- Track 80 : Burwell21_96
- Track 81 : Radiance_99
- Track 82 : SassyB_91, PopTart_91

- Track 83 : MadMen_106
- Track 84 : Chevrolet_109
- Track 85 : Mutaforma13_102, Firehouse51_95
- Track 86 : Pacc40_98
- Track 87 : Phasih_97
- Track 88 : Maravista_99
- Track 89 : Spartacus_108
- Track 90 : Sandalphon_100
- Track 91 : DRBy19_101, TDanisky_109, Sparkdehlily_108
- Track 92 : Kersh_103
- Track 93 : Hegedechwinu_109
- Track 94 : Whouxphf_105
- Track 95 : Leozinho_97
- Track 96 : JalFarm20_110
- Track 97 : XFactor_92
- Track 98 : Karhdo_97, Zerg_100
- Track 99 : Taj_107, Wee_104
- Track 100 : Poenanya_105, Doomphist_106
- Track 101 : Totinger_104, Rialto_106
- Track 102 : Minnie_96
- Track 103 : Doug_97
- Track 104 : SimranZ1_97
- Track 105 : Eish_106
- Track 106 : OlympiaSaint_105
- Track 107 : Sabbb_104
- Track 108 : ShroomBoi_99
- Track 109 : Pippy_100, Zizzle_105
- Track 110 : QuickMath_102
- Track 111 : Spoonbill_101
- Track 112 : Marker_114
- Track 113 : Beakin_94
- Track 114 : Ovechkin_103
- Track 115 : Phanphagia_106, Shauna1_103
- Track 116 : Byougenkin_97
- Track 117 : Juniper1_95
- Track 118 : Cornucopia_101
- Track 119 : OwlsT2W_98
- Track 120 : KristaRAM_110
- Track 121 : Job42_103
- Track 122 : Batiatus_101
- Track 123 : Drago_100
- Track 124 : Martik_100
- Track 125 : Squirty_100
- Track 126 : LunaStella_88
- Track 127 : TChen_98
- Track 128 : Renaud18_110
- Track 129 : QueenHazel_70, Xula_71
- Track 130 : Che9c_82
- Track 131 : Sbash_87
- Track 132 : MooMoo_94

Summary of Final Annotations (See graph section above for start numbers):

The start number called the most often in the published annotations is 23, it was called in 157 of the 199 non-draft genes in the pham.

Genes that call this "Most Annotated" start:

- Akhila_95, Alexphander_102, ArcusAngelus_101, Ardmore_85, Aubs_101, Awesomesauce_93, Batiatus_101, Beakin_94, BigPhil_98, Bipolar_103, BlueCrab_104, BobaPhett_104, BodEinwohner17_111, Boomer_102, Brocalys_93, Bubbles123_95, Burwell21_96, BuzzLyseyear_108, ByChance_92, CaptainTrips_103, Cerasum_100, Che9c_82, ChickenDinner_95, Chuckly_98, Clifton_93, Coco12_102, Cornucopia_101, DLane_101, DRBy19_101, DaddyRickover_103, Daenerys_99, Deb65_93, DillTech15_107, DocMcStuffins_88, Donkeykong_107, Doomphist_106, Dorothy_102, DosHalletts_101, DotProduct_95, Drago_100, Eish_106, EleanorGeorge_105, Emma_106, Empress_101, Eradicator_92, Estave1_109, Fancypants_108, Firehouse51_95, Flathead_103, Florinda_113, Fruitloop_99, GUmbe_100, Galactic_105, Gandolph_101, Geralt_94, Girafales_110, Girr_100, Gorge_100, Guppsters_95, Hades_98, Hamulus_101, Hlubikazi_99, IbOuu_97, Inventum_99, JalFarm20_110, James_105, Jarcob_104, Job42_103, JoeyJr_104, Juice456_100, Karhdo_97, Kenuha5_93, KingMidas_101, Kingsley_110, Koella_94, Krakatau_94, KristaRAM_110, LastJedi_92, Latretium_104, Leperchaun_103, LilMoolah_104, LittleShirley_108, Lizziana_102, Llij_96, MadMen_106, Madiba_100, Mandlovu_99, Maravista_99, Mattes_102, Melissauren88_91, MilanaBonita_94, MilleniumForce_101, MinionDave_99, Minnie_96, Misha28_91, MisterCuddles_101, MooMoo_94, Moonbeam_104, Mova_103, Mozy_105, Ms6_103, MulchSalad_103, Mutaforma13_102, Nimbo_93, Nivrat_101, NormanBulbieJr_99, Ogotogo_105, OldBen_98, OlympiaSaint_105, PHappiness_101, PMC_100, Phalconet_102, Phanphagia_106, PhesterPotato_104, Philus_105, Piper2020_96, Pippy_100, Plumbus_100, Poenanya_105, Polka14_105, Pollywog_103, Priscilla_102, QueenHazel_70, QuickMath_102, Quico_110, Radiance_99, Ramsey_106, RedBird_102, Renaud18_110, Rialto_106, RitaG_100, Rita_101, Rockne_104, Royals2015_105, SG4_102, Saal_99, Sabbb_104, Sarma624_103, Sassafras_103, Sbash_87, Scottish_101, Seagreen_102, Shauna1_103, ShiLan_104, ShowerHandel_99, ShroomBoi_99, Sparkdehlily_108, Spartacus_108, Spikelee_101, Spoonbill_101, Squirty_100, StAnnes_106, Stap_96, Starcevich_103, Strokeseat_99, SwagPiggett_103, TChen_98, TDanisky_109, Taj_107, TootsiePop_91, Tootsieroll_95, Totinger_104, VRedHorse_102, Velveteen_98, Wee_104, Whatsapiecost_95, XFactor_92, Xula_71, Yorick_97, Zerg_100, Zizzle_105,

Genes that have the "Most Annotated" start but do not call it:

- Bobi_102, Byougenkin_97, Chevrolet_109, Crumble_95, DaWorst_100, DirtMcgirt_101, Doug_97, Enby_104, Filuzino_101, Frankie_100, FreddyB_110, GigiOuiOui_95, Harley_102, Hegedechwinu_109, Ibhubesi_97, Juniper1_95, Kersh_103, Kimberlium_102, Leozinho_97, Lorde_103, LunaBlu_107, LunaStella_88, Mahavrat_94, Mantra_98, Marker_114, Martik_100, Myrna_234, Nitzel_95, Ovechkin_103, OwlsT2W_98, Pacc40_98, Phasih_97, Phatniss_98, PopTart_91, RockyHorror_104, Ruby_97, Sandalphon_100, SassyB_91, SiSi_96, SimranZ1_97, SuperGrey_100, UncleRicky_100, Veteran_91, Wachhund_97, Whouxphf_105,

Genes that do not have the "Most Annotated" start:

- Farewell_90, ScoobyDoobyDoo_232, Sparky_88,

Summary by start number:

Start 8:

- Found in 111 of 219 (50.7%) of genes in pham
- Manual Annotations of this start: 35 of 199
- Called 34.2% of time when present
- Phage (with cluster) where this start called: Bobi_102 (F1), Byougenkin_97 (F1), Crumble_95 (F1), DaWorst_100 (F1), DirtMcgirt_101 (F1), Doug_97 (F1), Enby_104 (F1), Frankie_100 (F1), FreddyB_110 (F1), GigiOuiOui_95 (F1), Harley_102 (F1), Ibhubesi_97 (F1), Juniper1_95 (F1), Kersh_103 (F1), Kimberlium_102 (F1), Leozinho_97 (F1), Lorde_103 (F1), LunaBlu_107 (F1), Mahavrat_94 (F1), Mantra_98 (F1), Marker_114 (F1), Ovechkin_103 (F1), OwlsT2W_98 (F1), Pacc40_98 (F1), Phasih_97 (F1), Phatniss_98 (F1), PopTart_91 (F1), RockyHorror_104 (F1), Ruby_97 (F1), Sandalphon_100 (F1), SassyB_91 (F1), SiSi_96 (F1), SimranZ1_97 (F1), SuperGrey_100 (F1), UncleRicky_100 (F1), Veteran_91 (F1), Wachhund_97 (F1), Whouxphf_105 (F1),

Start 14:

- Found in 1 of 219 (0.5%) of genes in pham
- Manual Annotations of this start: 1 of 199
- Called 100.0% of time when present
- Phage (with cluster) where this start called: Filuzino_101 (F1),

Start 18:

- Found in 2 of 219 (0.9%) of genes in pham
- Manual Annotations of this start: 2 of 199
- Called 100.0% of time when present
- Phage (with cluster) where this start called: Martik_100 (F1), Nitzel_95 (F1),

Start 22:

- Found in 2 of 219 (0.9%) of genes in pham
- Manual Annotations of this start: 1 of 199
- Called 100.0% of time when present
- Phage (with cluster) where this start called: Farewell_90 (AF), Sparky_88 (AF),

Start 23:

- Found in 216 of 219 (98.6%) of genes in pham
- Manual Annotations of this start: 157 of 199
- Called 79.2% of time when present
- Phage (with cluster) where this start called: Akhila_95 (F1), Alexphander_102 (F1), ArcusAngelus_101 (F1), Ardmore_85 (F1), Aubs_101 (F1), Awesomesauce_93 (F1), Batiatus_101 (F1), Beakin_94 (F1), BigPhil_98 (F1), Bipolar_103 (F1), BlueCrab_104 (F1), BobaPhett_104 (F1), BodEinwohner17_111 (F1), Boomer_102 (F1), Brocalys_93 (F1), Bubbles123_95 (F1), Burwell21_96 (F1), BuzzLyseyear_108 (F1), ByChance_92 (F1), CaptainTrips_103 (F1), Cerasum_100 (F1), Che9c_82 (I2), ChickenDinner_95 (F1), Chuckly_98 (F1), Clifton_93 (F1), Coco12_102 (F1), Cornucopia_101 (F1), DLane_101 (F1), DRBy19_101 (F1), DaddyRickover_103 (F1), Daenerys_99 (F1), Deb65_93 (F1), DillTech15_107 (F1), DocMcStuffins_88 (F1), Donkeykong_107 (F1), Doomphist_106 (F1), Dorothy_102 (F1), DosHalletts_101 (F1), DotProduct_95 (F1), Drago_100 (F1), Eish_106 (F1), EleanorGeorge_105 (F1), Emma_106 (F1), Empress_101 (F1), Eradicator_92 (F1), Estave1_109 (F1), Fancypants_108 (F1), Firehouse51_95 (F1), Flathead_103 (F1), Florinda_113 (F1),

Fruitloop_99 (F1), GUmbie_100 (F1), Galactic_105 (F1), Gandalph_101 (F1), Geralt_94 (F1), Girafales_110 (F1), Girr_100 (F1), Gorge_100 (F1), Guppsters_95 (F1), Hades_98 (F1), Hamulus_101 (F1), Hlubikazi_99 (F1), IbOuu_97 (F1), Inventum_99 (F1), JalFarm20_110 (F1), James_105 (F1), Jarcob_104 (F1), Job42_103 (F1), JoeyJr_104 (F1), Juice456_100 (F1), Karhdo_97 (F1), Kenuha5_93 (F1), KingMidas_101 (F1), Kingsley_110 (F1), Koella_94 (F1), Krakatau_94 (F1), KristaRAM_110 (F1), LastJedi_92 (F1), Latretium_104 (F1), Leperchaun_103 (F1), LilMoolah_104 (F1), LittleShirley_108 (F1), Lizziana_102 (F1), Llij_96 (F1), MadMen_106 (F1), Madiba_100 (F1), Mandlovu_99 (F1), Maravista_99 (F1), Mattes_102 (F1), Melissauren88_91 (F1), MilanaBonita_94 (F1), MilleniumForce_101 (F1), MinionDave_99 (F1), Minnie_96 (F1), Misha28_91 (F1), MisterCuddles_101 (F1), MooMoo_94 (singleton), Moonbeam_104 (F1), Mova_103 (F1), Mozy_105 (F1), Ms6_103 (F1), MulchSalad_103 (F), Mutaforma13_102 (F1), Nimbo_93 (F1), Nivrat_101 (F1), NormanBulbieJr_99 (F1), Ogopogo_105 (F1), OldBen_98 (F1), OlympiaSaint_105 (F1), PHappiness_101 (F1), PMC_100 (F1), Phalconet_102 (F1), Phanphagia_106 (F1), PhesterPhotato_104 (F1), Philus_105 (F1), Piper2020_96 (F1), Pippy_100 (F1), Plumbus_100 (F1), Poenanya_105 (F1), Polka14_105 (F1), Pollywog_103 (F1), Priscilla_102 (F1), QueenHazel_70 (I1), QuickMath_102 (F1), Quico_110 (F1), Radiance_99 (F1), Ramsey_106 (F1), RedBird_102 (F1), Renaud18_110 (F4), Rialto_106 (F1), RitaG_100 (F1), Rita_101 (F1), Rockne_104 (F1), Royals2015_105 (F1), SG4_102 (F1), Saal_99 (F1), Sabbb_104 (F1), Sarma624_103 (F1), Sassafras_103 (F1), Sbash_87 (I2), Scottish_101 (F1), Seagreen_102 (F1), Shauna1_103 (F1), ShiLan_104 (F1), ShowerHandel_99 (F1), ShroomBoi_99 (F1), Sparkdehlily_108 (F1), Spartacus_108 (F1), Spikelee_101 (F1), Spoonbill_101 (F1), Squirty_100 (F3), StAnnes_106 (F1), Stap_96 (F1), Starceвич_103 (F1), Strokeseat_99 (F1), SwagPiggett_103 (F1), TChen_98 (F4), TDanisky_109 (F1), Taj_107 (F1), TootsiePop_91 (F1), Tootsieroll_95 (F1), Totinger_104 (F1), VRedHorse_102 (F1), Velveteen_98 (F1), Wee_104 (F1), Whatsapiecost_95 (F1), XFactor_92 (F1), Xula_71 (I1), Yorick_97 (F1), Zerg_100 (F1), Zizzle_105 (F1),

Start 25:

- Found in 91 of 219 (41.6%) of genes in pham
- No Manual Annotations of this start.
- Called 1.1% of time when present
- Phage (with cluster) where this start called: LunaStella_88 (F4),

Start 26:

- Found in 204 of 219 (93.2%) of genes in pham
- Manual Annotations of this start: 1 of 199
- Called 1.0% of time when present
- Phage (with cluster) where this start called: Chevrolet_109 (F1), Hegedechwinu_109 (F1),

Start 27:

- Found in 1 of 219 (0.5%) of genes in pham
- Manual Annotations of this start: 1 of 199
- Called 100.0% of time when present
- Phage (with cluster) where this start called: ScoobyDoobyDoo_232 (C2),

Start 29:

- Found in 5 of 219 (2.3%) of genes in pham
- Manual Annotations of this start: 1 of 199

- Called 20.0% of time when present
- Phage (with cluster) where this start called: Myrna_234 (C2),

Summary by clusters:

There are 9 clusters represented in this pham: F1, F, F3, F4, AF, I1, I2, singleton, C2,

Info for manual annotations of cluster AF:

- Start number 22 was manually annotated 1 time for cluster AF.

Info for manual annotations of cluster C2:

- Start number 27 was manually annotated 1 time for cluster C2.
- Start number 29 was manually annotated 1 time for cluster C2.

Info for manual annotations of cluster F1:

- Start number 8 was manually annotated 35 times for cluster F1.
- Start number 14 was manually annotated 1 time for cluster F1.
- Start number 18 was manually annotated 2 times for cluster F1.
- Start number 23 was manually annotated 149 times for cluster F1.
- Start number 26 was manually annotated 1 time for cluster F1.

Info for manual annotations of cluster F3:

- Start number 23 was manually annotated 1 time for cluster F3.

Info for manual annotations of cluster F4:

- Start number 23 was manually annotated 2 times for cluster F4.

Info for manual annotations of cluster I1:

- Start number 23 was manually annotated 2 times for cluster I1.

Info for manual annotations of cluster I2:

- Start number 23 was manually annotated 2 times for cluster I2.

Gene Information:

Gene: Akhila_95 Start: 53042, Stop: 54478, Start Num: 23

Candidate Starts for Akhila_95:

(6, 52739), (Start: 8 @52868 has 35 MA's), (Start: 23 @53042 has 157 MA's), (Start: 26 @53054 has 1 MA's), (45, 53393), (48, 53495), (50, 53516), (56, 53660), (64, 53735), (68, 53780), (69, 53798), (70, 53801), (71, 53852), (75, 53882), (79, 53915), (89, 54047), (92, 54077), (94, 54101), (97, 54143), (99, 54158), (103, 54239), (105, 54263), (110, 54281), (116, 54356), (120, 54419), (121, 54422),

Gene: Alexphander_102 Start: 55386, Stop: 56825, Start Num: 23

Candidate Starts for Alexphander_102:

(Start: 23 @55386 has 157 MA's), (25, 55395), (Start: 26 @55398 has 1 MA's), (45, 55740), (48, 55842), (54, 55977), (56, 56007), (58, 56025), (68, 56127), (69, 56145), (70, 56148), (71, 56199), (75, 56229), (79, 56262), (89, 56394), (92, 56424), (94, 56448), (97, 56490), (99, 56505), (101, 56571), (103, 56586), (105, 56610), (110, 56628), (116, 56703), (120, 56766),

Gene: ArcusAngelus_101 Start: 55357, Stop: 56796, Start Num: 23

Candidate Starts for ArcusAngelus_101:

(Start: 23 @55357 has 157 MA's), (25, 55366), (Start: 26 @55369 has 1 MA's), (45, 55711), (48, 55813), (54, 55948), (56, 55978), (64, 56053), (68, 56098), (69, 56116), (70, 56119), (71, 56170), (75, 56200), (79, 56233), (89, 56365), (92, 56395), (94, 56419), (97, 56461), (99, 56476), (103, 56557), (105, 56581), (110, 56599), (116, 56674), (120, 56737), (121, 56740),

Gene: Ardmore_85 Start: 48931, Stop: 50367, Start Num: 23

Candidate Starts for Ardmore_85:

(6, 48628), (Start: 8 @48757 has 35 MA's), (Start: 23 @48931 has 157 MA's), (Start: 26 @48943 has 1 MA's), (45, 49282), (48, 49384), (56, 49549), (68, 49669), (69, 49687), (70, 49690), (71, 49741), (79, 49804), (89, 49936), (92, 49966), (94, 49990), (97, 50032), (99, 50047), (103, 50128), (105, 50152), (110, 50170), (116, 50245), (120, 50308), (121, 50311),

Gene: Aubs_101 Start: 55933, Stop: 57369, Start Num: 23

Candidate Starts for Aubs_101:

(6, 55630), (Start: 8 @55759 has 35 MA's), (Start: 23 @55933 has 157 MA's), (Start: 26 @55945 has 1 MA's), (45, 56284), (48, 56386), (56, 56551), (64, 56626), (68, 56671), (69, 56689), (70, 56692), (71, 56743), (79, 56806), (89, 56938), (92, 56968), (94, 56992), (97, 57034), (99, 57049), (103, 57130), (105, 57154), (110, 57172), (116, 57247), (120, 57310), (121, 57313),

Gene: Awesomesauce_93 Start: 54705, Stop: 56141, Start Num: 23

Candidate Starts for Awesomesauce_93:

(Start: 23 @54705 has 157 MA's), (Start: 26 @54717 has 1 MA's), (45, 55056), (48, 55158), (56, 55323), (57, 55335), (64, 55398), (68, 55443), (69, 55461), (70, 55464), (71, 55515), (75, 55545), (79, 55578), (89, 55710), (92, 55740), (94, 55764), (97, 55806), (99, 55821), (103, 55902), (105, 55926), (110, 55944), (116, 56019), (120, 56082),

Gene: Batiatus_101 Start: 54481, Stop: 55917, Start Num: 23

Candidate Starts for Batiatus_101:

(6, 54178), (Start: 8 @54307 has 35 MA's), (Start: 23 @54481 has 157 MA's), (Start: 26 @54493 has 1 MA's), (45, 54832), (48, 54934), (56, 55099), (58, 55117), (68, 55219), (69, 55237), (70, 55240), (71, 55291), (75, 55321), (79, 55354), (89, 55486), (92, 55516), (94, 55540), (97, 55582), (99, 55597), (103, 55678), (105, 55702), (110, 55720), (116, 55795), (120, 55858), (121, 55861),

Gene: Beakin_94 Start: 51744, Stop: 53180, Start Num: 23

Candidate Starts for Beakin_94:

(9, 51642), (Start: 23 @51744 has 157 MA's), (Start: 26 @51756 has 1 MA's), (45, 52095), (48, 52197), (50, 52218), (56, 52362), (64, 52437), (68, 52482), (70, 52503), (71, 52554), (75, 52584), (79, 52617), (89, 52749), (92, 52779), (94, 52803), (97, 52845), (99, 52860), (103, 52941), (105, 52965), (110, 52983), (116, 53058), (120, 53121), (121, 53124),

Gene: BigPhil_98 Start: 51273, Stop: 52709, Start Num: 23

Candidate Starts for BigPhil_98:

(6, 50970), (Start: 8 @51099 has 35 MA's), (Start: 23 @51273 has 157 MA's), (Start: 26 @51285 has 1 MA's), (45, 51624), (48, 51726), (56, 51891), (70, 52032), (71, 52083), (75, 52113), (79, 52146), (89, 52278), (92, 52308), (94, 52332), (97, 52374), (99, 52389), (103, 52470), (105, 52494), (110, 52512), (116, 52587), (120, 52650),

Gene: Bipolar_103 Start: 56250, Stop: 57686, Start Num: 23

Candidate Starts for Bipolar_103:

(6, 55947), (Start: 8 @56076 has 35 MA's), (Start: 23 @56250 has 157 MA's), (Start: 26 @56262 has 1 MA's), (45, 56601), (48, 56703), (56, 56868), (70, 57009), (71, 57060), (75, 57090), (79, 57123), (89, 57255), (92, 57285), (94, 57309), (97, 57351), (99, 57366), (103, 57447), (105, 57471), (110, 57489),

(116, 57564), (120, 57627),

Gene: BlueCrab_104 Start: 55862, Stop: 57301, Start Num: 23

Candidate Starts for BlueCrab_104:

(Start: 8 @55679 has 35 MA's), (Start: 23 @55862 has 157 MA's), (25, 55871), (Start: 26 @55874 has 1 MA's), (45, 56216), (48, 56318), (54, 56453), (56, 56483), (58, 56501), (68, 56603), (69, 56621), (70, 56624), (71, 56675), (79, 56738), (92, 56900), (94, 56924), (97, 56966), (99, 56981), (101, 57047), (105, 57086), (110, 57104), (116, 57179),

Gene: BobaPhett_104 Start: 56828, Stop: 58264, Start Num: 23

Candidate Starts for BobaPhett_104:

(Start: 23 @56828 has 157 MA's), (Start: 26 @56840 has 1 MA's), (45, 57179), (48, 57281), (50, 57302), (54, 57416), (56, 57446), (64, 57521), (68, 57566), (69, 57584), (70, 57587), (71, 57638), (75, 57668), (79, 57701), (89, 57833), (92, 57863), (94, 57887), (97, 57929), (99, 57944), (105, 58049), (110, 58067), (116, 58142),

Gene: Bobi_102 Start: 55781, Stop: 57391, Start Num: 8

Candidate Starts for Bobi_102:

(6, 55652), (Start: 8 @55781 has 35 MA's), (Start: 23 @55955 has 157 MA's), (Start: 26 @55967 has 1 MA's), (45, 56306), (48, 56408), (54, 56543), (56, 56573), (64, 56648), (68, 56693), (70, 56714), (71, 56765), (75, 56795), (79, 56828), (92, 56990), (94, 57014), (97, 57056), (99, 57071), (101, 57137), (105, 57176), (110, 57194), (116, 57269),

Gene: BodEinwohner17_111 Start: 56918, Stop: 58357, Start Num: 23

Candidate Starts for BodEinwohner17_111:

(Start: 8 @56735 has 35 MA's), (Start: 23 @56918 has 157 MA's), (25, 56927), (Start: 26 @56930 has 1 MA's), (45, 57272), (48, 57374), (54, 57509), (56, 57539), (58, 57557), (68, 57659), (69, 57677), (70, 57680), (71, 57731), (79, 57794), (92, 57956), (94, 57980), (97, 58022), (99, 58037), (101, 58103), (105, 58142), (110, 58160), (116, 58235),

Gene: Boomer_102 Start: 55216, Stop: 56655, Start Num: 23

Candidate Starts for Boomer_102:

(Start: 23 @55216 has 157 MA's), (25, 55225), (Start: 26 @55228 has 1 MA's), (45, 55570), (48, 55672), (56, 55837), (64, 55912), (68, 55957), (69, 55975), (70, 55978), (71, 56029), (79, 56092), (89, 56224), (92, 56254), (94, 56278), (97, 56320), (99, 56335), (103, 56416), (105, 56440), (110, 56458), (116, 56533), (120, 56596), (121, 56599),

Gene: Brocalys_93 Start: 52018, Stop: 53454, Start Num: 23

Candidate Starts for Brocalys_93:

(6, 51715), (Start: 8 @51844 has 35 MA's), (Start: 23 @52018 has 157 MA's), (Start: 26 @52030 has 1 MA's), (45, 52369), (48, 52471), (56, 52636), (58, 52654), (70, 52777), (71, 52828), (75, 52858), (79, 52891), (89, 53023), (92, 53053), (94, 53077), (97, 53119), (99, 53134), (101, 53200), (105, 53239), (110, 53257), (116, 53332),

Gene: Bubbles123_95 Start: 54293, Stop: 55729, Start Num: 23

Candidate Starts for Bubbles123_95:

(6, 53990), (Start: 8 @54119 has 35 MA's), (Start: 23 @54293 has 157 MA's), (Start: 26 @54305 has 1 MA's), (45, 54644), (48, 54746), (56, 54911), (64, 54986), (68, 55031), (69, 55049), (70, 55052), (71, 55103), (79, 55166), (92, 55328), (94, 55352), (97, 55394), (99, 55409), (103, 55490), (105, 55514), (110, 55532), (116, 55607), (120, 55670),

Gene: Burwell21_96 Start: 54593, Stop: 56029, Start Num: 23

Candidate Starts for Burwell21_96:

(Start: 23 @54593 has 157 MA's), (Start: 26 @54605 has 1 MA's), (45, 54944), (48, 55046), (50, 55067), (54, 55181), (56, 55211), (64, 55286), (68, 55331), (69, 55349), (70, 55352), (71, 55403), (75, 55433), (79, 55466), (89, 55598), (92, 55628), (94, 55652), (97, 55694), (99, 55709), (103, 55790), (105, 55814), (110, 55832), (116, 55907), (120, 55970), (121, 55973),

Gene: BuzzLyseyear_108 Start: 57074, Stop: 58510, Start Num: 23

Candidate Starts for BuzzLyseyear_108:

(Start: 23 @57074 has 157 MA's), (25, 57080), (Start: 26 @57083 has 1 MA's), (45, 57425), (48, 57527), (54, 57662), (56, 57692), (58, 57710), (64, 57767), (68, 57812), (69, 57830), (70, 57833), (71, 57884), (79, 57947), (89, 58079), (92, 58109), (94, 58133), (97, 58175), (99, 58190), (105, 58295), (110, 58313), (116, 58388),

Gene: ByChance_92 Start: 50387, Stop: 51826, Start Num: 23

Candidate Starts for ByChance_92:

(Start: 23 @50387 has 157 MA's), (25, 50396), (Start: 26 @50399 has 1 MA's), (45, 50741), (48, 50843), (54, 50978), (56, 51008), (58, 51026), (68, 51128), (69, 51146), (70, 51149), (71, 51200), (79, 51263), (92, 51425), (94, 51449), (97, 51491), (99, 51506), (105, 51611), (110, 51629), (116, 51704),

Gene: Byougenkin_97 Start: 51166, Stop: 52869, Start Num: 8

Candidate Starts for Byougenkin_97:

(5, 50980), (6, 51037), (Start: 8 @51166 has 35 MA's), (Start: 23 @51340 has 157 MA's), (Start: 26 @51352 has 1 MA's), (45, 51691), (48, 51793), (54, 51928), (56, 51958), (58, 51976), (64, 52033), (68, 52078), (69, 52096), (70, 52099), (71, 52150), (79, 52213), (92, 52375), (94, 52399), (97, 52441), (99, 52456), (101, 52522), (105, 52561), (106, 52579), (108, 52615), (109, 52654), (110, 52672), (116, 52747),

Gene: CaptainTrips_103 Start: 54119, Stop: 55555, Start Num: 23

Candidate Starts for CaptainTrips_103:

(6, 53816), (Start: 8 @53945 has 35 MA's), (Start: 23 @54119 has 157 MA's), (Start: 26 @54131 has 1 MA's), (45, 54470), (48, 54572), (56, 54737), (64, 54812), (68, 54857), (70, 54878), (71, 54929), (75, 54959), (79, 54992), (89, 55124), (92, 55154), (94, 55178), (97, 55220), (99, 55235), (103, 55316), (105, 55340), (110, 55358), (116, 55433), (120, 55496), (121, 55499),

Gene: Cerasum_100 Start: 51291, Stop: 52727, Start Num: 23

Candidate Starts for Cerasum_100:

(6, 50988), (Start: 8 @51117 has 35 MA's), (Start: 23 @51291 has 157 MA's), (Start: 26 @51303 has 1 MA's), (45, 51642), (48, 51744), (56, 51909), (70, 52050), (71, 52101), (75, 52131), (79, 52164), (89, 52296), (92, 52326), (94, 52350), (97, 52392), (99, 52407), (103, 52488), (105, 52512), (110, 52530), (116, 52605), (120, 52668),

Gene: Che9c_82 Start: 54573, Stop: 56009, Start Num: 23

Candidate Starts for Che9c_82:

(13, 54507), (Start: 23 @54573 has 157 MA's), (25, 54582), (45, 54924), (48, 55026), (56, 55191), (64, 55266), (68, 55311), (69, 55329), (70, 55332), (71, 55383), (79, 55446), (84, 55494), (87, 55569), (89, 55578), (92, 55608), (94, 55632), (99, 55689), (105, 55794), (110, 55812), (114, 55875), (116, 55887),

Gene: Chevrolet_109 Start: 55370, Stop: 56797, Start Num: 26

Candidate Starts for Chevrolet_109:

(Start: 23 @55358 has 157 MA's), (25, 55367), (Start: 26 @55370 has 1 MA's), (45, 55712), (48, 55814), (54, 55949), (56, 55979), (64, 56054), (68, 56099), (69, 56117), (70, 56120), (71, 56171), (75, 56201), (79, 56234), (89, 56366), (92, 56396), (94, 56420), (97, 56462), (99, 56477), (103, 56558), (105, 56582), (110, 56600), (116, 56675), (120, 56738), (121, 56741),

Gene: ChickenDinner_95 Start: 54180, Stop: 55616, Start Num: 23

Candidate Starts for ChickenDinner_95:

(1, 53421), (2, 53583), (3, 53727), (4, 53730), (5, 53820), (6, 53877), (7, 53982), (Start: 8 @54006 has 35 MA's), (Start: 23 @54180 has 157 MA's), (Start: 26 @54192 has 1 MA's), (45, 54531), (48, 54633), (54, 54768), (56, 54798), (58, 54816), (64, 54873), (68, 54918), (69, 54936), (70, 54939), (71, 54990), (79, 55053), (89, 55185), (92, 55215), (94, 55239), (97, 55281), (99, 55296), (103, 55377), (105, 55401), (110, 55419), (116, 55494), (120, 55557),

Gene: Chuckly_98 Start: 51161, Stop: 52597, Start Num: 23

Candidate Starts for Chuckly_98:

(6, 50858), (Start: 8 @50987 has 35 MA's), (Start: 23 @51161 has 157 MA's), (Start: 26 @51173 has 1 MA's), (45, 51512), (48, 51614), (56, 51779), (64, 51854), (68, 51899), (69, 51917), (70, 51920), (71, 51971), (75, 52001), (79, 52034), (89, 52166), (92, 52196), (94, 52220), (97, 52262), (99, 52277), (103, 52358), (105, 52382), (110, 52400), (116, 52475), (120, 52538), (121, 52541),

Gene: Clifton_93 Start: 52993, Stop: 54429, Start Num: 23

Candidate Starts for Clifton_93:

(6, 52690), (Start: 8 @52819 has 35 MA's), (Start: 23 @52993 has 157 MA's), (Start: 26 @53005 has 1 MA's), (45, 53344), (48, 53446), (56, 53611), (58, 53629), (70, 53752), (71, 53803), (75, 53833), (79, 53866), (89, 53998), (92, 54028), (94, 54052), (97, 54094), (99, 54109), (101, 54175), (103, 54190), (105, 54214), (110, 54232), (116, 54307),

Gene: Coco12_102 Start: 55348, Stop: 56784, Start Num: 23

Candidate Starts for Coco12_102:

(6, 55045), (Start: 8 @55174 has 35 MA's), (Start: 23 @55348 has 157 MA's), (Start: 26 @55360 has 1 MA's), (45, 55699), (48, 55801), (56, 55966), (70, 56107), (71, 56158), (75, 56188), (79, 56221), (89, 56353), (92, 56383), (94, 56407), (97, 56449), (99, 56464), (103, 56545), (105, 56569), (110, 56587), (116, 56662), (120, 56725),

Gene: Cornucopia_101 Start: 52419, Stop: 53855, Start Num: 23

Candidate Starts for Cornucopia_101:

(6, 52116), (Start: 8 @52245 has 35 MA's), (Start: 23 @52419 has 157 MA's), (Start: 26 @52431 has 1 MA's), (43, 52695), (45, 52770), (48, 52872), (56, 53037), (64, 53112), (68, 53157), (69, 53175), (70, 53178), (71, 53229), (79, 53292), (89, 53424), (92, 53454), (94, 53478), (97, 53520), (99, 53535), (101, 53601), (105, 53640), (110, 53658), (116, 53733), (120, 53796),

Gene: Crumble_95 Start: 50513, Stop: 52123, Start Num: 8

Candidate Starts for Crumble_95:

(5, 50327), (6, 50384), (Start: 8 @50513 has 35 MA's), (Start: 23 @50687 has 157 MA's), (Start: 26 @50699 has 1 MA's), (45, 51038), (48, 51140), (50, 51161), (54, 51275), (56, 51305), (64, 51380), (68, 51425), (69, 51443), (70, 51446), (71, 51497), (75, 51527), (79, 51560), (89, 51692), (92, 51722), (94, 51746), (97, 51788), (99, 51803), (103, 51884), (105, 51908), (110, 51926), (116, 52001), (120, 52064),

Gene: DLane_101 Start: 55690, Stop: 57126, Start Num: 23

Candidate Starts for DLane_101:

(Start: 23 @55690 has 157 MA's), (Start: 26 @55702 has 1 MA's), (45, 56041), (48, 56143), (56, 56308), (64, 56383), (68, 56428), (70, 56449), (71, 56500), (79, 56563), (89, 56695), (92, 56725), (94, 56749), (97, 56791), (99, 56806), (103, 56887), (105, 56911), (110, 56929), (116, 57004), (120, 57067), (121, 57070),

Gene: DRBy19_101 Start: 55630, Stop: 57069, Start Num: 23

Candidate Starts for DRBy19_101:

(Start: 23 @55630 has 157 MA's), (25, 55639), (Start: 26 @55642 has 1 MA's), (45, 55984), (48, 56086), (54, 56221), (56, 56251), (58, 56269), (68, 56371), (69, 56389), (70, 56392), (71, 56443), (75, 56473), (79, 56506), (89, 56638), (92, 56668), (94, 56692), (97, 56734), (99, 56749), (105, 56854), (110, 56872), (116, 56947),

Gene: DaWorst_100 Start: 54061, Stop: 55683, Start Num: 8

Candidate Starts for DaWorst_100:

(Start: 8 @54061 has 35 MA's), (Start: 23 @54244 has 157 MA's), (25, 54253), (Start: 26 @54256 has 1 MA's), (45, 54598), (48, 54700), (54, 54835), (56, 54865), (58, 54883), (68, 54985), (69, 55003), (70, 55006), (71, 55057), (73, 55075), (79, 55120), (92, 55282), (94, 55306), (97, 55348), (99, 55363), (101, 55429), (105, 55468), (110, 55486), (116, 55561),

Gene: DaddyRickover_103 Start: 55113, Stop: 56549, Start Num: 23

Candidate Starts for DaddyRickover_103:

(Start: 23 @55113 has 157 MA's), (25, 55119), (Start: 26 @55122 has 1 MA's), (45, 55464), (48, 55566), (54, 55701), (56, 55731), (58, 55749), (68, 55851), (69, 55869), (70, 55872), (71, 55923), (79, 55986), (92, 56148), (94, 56172), (97, 56214), (99, 56229), (101, 56295), (105, 56334), (110, 56352), (116, 56427),

Gene: Daenerys_99 Start: 55280, Stop: 56716, Start Num: 23

Candidate Starts for Daenerys_99:

(Start: 23 @55280 has 157 MA's), (25, 55286), (Start: 26 @55289 has 1 MA's), (45, 55631), (48, 55733), (54, 55868), (56, 55898), (58, 55916), (68, 56018), (69, 56036), (70, 56039), (71, 56090), (73, 56108), (75, 56120), (79, 56153), (89, 56285), (92, 56315), (94, 56339), (97, 56381), (99, 56396), (101, 56462), (105, 56501), (110, 56519), (116, 56594),

Gene: Deb65_93 Start: 53004, Stop: 54440, Start Num: 23

Candidate Starts for Deb65_93:

(Start: 23 @53004 has 157 MA's), (25, 53010), (Start: 26 @53013 has 1 MA's), (45, 53355), (48, 53457), (54, 53592), (56, 53622), (58, 53640), (68, 53742), (69, 53760), (70, 53763), (71, 53814), (73, 53832), (75, 53844), (79, 53877), (89, 54009), (92, 54039), (94, 54063), (97, 54105), (99, 54120), (101, 54186), (105, 54225), (110, 54243), (116, 54318),

Gene: DillTech15_107 Start: 54586, Stop: 56025, Start Num: 23

Candidate Starts for DillTech15_107:

(Start: 23 @54586 has 157 MA's), (25, 54595), (Start: 26 @54598 has 1 MA's), (45, 54940), (48, 55042), (56, 55207), (68, 55327), (69, 55345), (70, 55348), (71, 55399), (75, 55429), (79, 55462), (89, 55594), (92, 55624), (94, 55648), (97, 55690), (99, 55705), (103, 55786), (105, 55810), (110, 55828), (116, 55903), (120, 55966), (121, 55969),

Gene: DirtMcgirt_101 Start: 51642, Stop: 53252, Start Num: 8

Candidate Starts for DirtMcgirt_101:

(Start: 8 @51642 has 35 MA's), (Start: 23 @51816 has 157 MA's), (Start: 26 @51828 has 1 MA's), (45, 52167), (48, 52269), (50, 52290), (56, 52434), (64, 52509), (68, 52554), (70, 52575), (71, 52626), (79, 52689), (92, 52851), (94, 52875), (97, 52917), (99, 52932), (101, 52998), (105, 53037), (110, 53055), (116, 53130),

Gene: DocMcStuffins_88 Start: 55810, Stop: 57246, Start Num: 23

Candidate Starts for DocMcStuffins_88:

(1, 55051), (2, 55213), (3, 55357), (4, 55360), (5, 55450), (6, 55507), (7, 55612), (Start: 8 @55636 has 35 MA's), (Start: 23 @55810 has 157 MA's), (Start: 26 @55822 has 1 MA's), (45, 56161), (48, 56263), (54, 56398), (56, 56428), (58, 56446), (64, 56503), (68, 56548), (69, 56566), (70, 56569), (71, 56620), (79, 56683), (89, 56815), (92, 56845), (94, 56869), (97, 56911), (99, 56926), (103, 57007), (105,

57031), (110, 57049), (116, 57124), (120, 57187),

Gene: Donkeykong_107 Start: 56745, Stop: 58181, Start Num: 23

Candidate Starts for Donkeykong_107:

(Start: 8 @56562 has 35 MA's), (Start: 23 @56745 has 157 MA's), (25, 56754), (Start: 26 @56757 has 1 MA's), (45, 57096), (48, 57198), (54, 57333), (56, 57363), (58, 57381), (68, 57483), (69, 57501), (70, 57504), (71, 57555), (75, 57585), (79, 57618), (89, 57750), (92, 57780), (94, 57804), (97, 57846), (99, 57861), (103, 57942), (105, 57966), (110, 57984), (116, 58059), (120, 58122), (121, 58125),

Gene: Doomphist_106 Start: 55933, Stop: 57354, Start Num: 23

Candidate Starts for Doomphist_106:

(Start: 23 @55933 has 157 MA's), (24, 55939), (Start: 26 @55942 has 1 MA's), (45, 56284), (48, 56386), (54, 56521), (56, 56551), (58, 56569), (64, 56626), (68, 56671), (69, 56689), (70, 56692), (71, 56743), (79, 56806), (89, 56938), (92, 56968), (94, 56992), (97, 57034), (99, 57049), (101, 57115), (103, 57130), (105, 57154), (110, 57172), (116, 57247), (120, 57310),

Gene: Dorothy_102 Start: 56102, Stop: 57538, Start Num: 23

Candidate Starts for Dorothy_102:

(Start: 23 @56102 has 157 MA's), (25, 56108), (Start: 26 @56111 has 1 MA's), (45, 56453), (48, 56555), (54, 56690), (56, 56720), (58, 56738), (68, 56840), (69, 56858), (70, 56861), (71, 56912), (73, 56930), (75, 56942), (79, 56975), (89, 57107), (92, 57137), (94, 57161), (97, 57203), (99, 57218), (101, 57284), (105, 57323), (110, 57341), (116, 57416),

Gene: DosHalletts_101 Start: 54741, Stop: 56177, Start Num: 23

Candidate Starts for DosHalletts_101:

(6, 54438), (Start: 8 @54567 has 35 MA's), (Start: 23 @54741 has 157 MA's), (Start: 26 @54753 has 1 MA's), (45, 55092), (48, 55194), (56, 55359), (64, 55434), (68, 55479), (70, 55500), (71, 55551), (75, 55581), (79, 55614), (89, 55746), (92, 55776), (94, 55800), (97, 55842), (99, 55857), (103, 55938), (105, 55962), (110, 55980), (116, 56055), (120, 56118), (121, 56121),

Gene: DotProduct_95 Start: 52108, Stop: 53544, Start Num: 23

Candidate Starts for DotProduct_95:

(6, 51805), (Start: 8 @51934 has 35 MA's), (Start: 23 @52108 has 157 MA's), (Start: 26 @52120 has 1 MA's), (45, 52459), (48, 52561), (56, 52726), (64, 52801), (68, 52846), (69, 52864), (70, 52867), (71, 52918), (75, 52948), (79, 52981), (89, 53113), (92, 53143), (94, 53167), (97, 53209), (99, 53224), (103, 53305), (105, 53329), (110, 53347), (116, 53422), (120, 53485), (121, 53488),

Gene: Doug_97 Start: 55481, Stop: 57100, Start Num: 8

Candidate Starts for Doug_97:

(Start: 8 @55481 has 35 MA's), (Start: 23 @55664 has 157 MA's), (25, 55673), (Start: 26 @55676 has 1 MA's), (45, 56015), (48, 56117), (54, 56252), (56, 56282), (58, 56300), (68, 56402), (69, 56420), (70, 56423), (71, 56474), (79, 56537), (89, 56669), (92, 56699), (94, 56723), (97, 56765), (99, 56780), (101, 56846), (105, 56885), (110, 56903), (116, 56978),

Gene: Drago_100 Start: 51828, Stop: 53267, Start Num: 23

Candidate Starts for Drago_100:

(Start: 8 @51645 has 35 MA's), (Start: 23 @51828 has 157 MA's), (25, 51837), (Start: 26 @51840 has 1 MA's), (45, 52182), (48, 52284), (54, 52419), (56, 52449), (58, 52467), (68, 52569), (69, 52587), (70, 52590), (71, 52641), (73, 52659), (79, 52704), (92, 52866), (94, 52890), (97, 52932), (99, 52947), (101, 53013), (105, 53052), (110, 53070), (116, 53145),

Gene: Eish_106 Start: 55417, Stop: 56853, Start Num: 23

Candidate Starts for Eish_106:

(6, 55114), (Start: 8 @55243 has 35 MA's), (Start: 23 @55417 has 157 MA's), (Start: 26 @55429 has 1 MA's), (45, 55768), (48, 55870), (54, 56005), (56, 56035), (58, 56053), (64, 56110), (68, 56155), (69, 56173), (70, 56176), (71, 56227), (79, 56290), (89, 56422), (92, 56452), (94, 56476), (97, 56518), (99, 56533), (101, 56599), (105, 56638), (110, 56656), (116, 56731),

Gene: EleanorGeorge_105 Start: 56747, Stop: 58186, Start Num: 23

Candidate Starts for EleanorGeorge_105:

(Start: 23 @56747 has 157 MA's), (25, 56756), (Start: 26 @56759 has 1 MA's), (45, 57101), (48, 57203), (56, 57368), (68, 57488), (69, 57506), (70, 57509), (71, 57560), (75, 57590), (79, 57623), (89, 57755), (92, 57785), (94, 57809), (97, 57851), (99, 57866), (103, 57947), (105, 57971), (110, 57989), (116, 58064), (120, 58127), (121, 58130),

Gene: Emma_106 Start: 53685, Stop: 55121, Start Num: 23

Candidate Starts for Emma_106:

(6, 53382), (Start: 8 @53511 has 35 MA's), (Start: 23 @53685 has 157 MA's), (Start: 26 @53697 has 1 MA's), (45, 54036), (48, 54138), (56, 54303), (70, 54444), (71, 54495), (75, 54525), (79, 54558), (89, 54690), (92, 54720), (94, 54744), (97, 54786), (99, 54801), (103, 54882), (105, 54906), (110, 54924), (116, 54999), (120, 55062),

Gene: Empress_101 Start: 54196, Stop: 55632, Start Num: 23

Candidate Starts for Empress_101:

(Start: 23 @54196 has 157 MA's), (25, 54202), (Start: 26 @54205 has 1 MA's), (45, 54547), (48, 54649), (54, 54784), (56, 54814), (58, 54832), (68, 54934), (69, 54952), (70, 54955), (71, 55006), (73, 55024), (75, 55036), (79, 55069), (89, 55201), (92, 55231), (94, 55255), (97, 55297), (99, 55312), (101, 55378), (105, 55417), (110, 55435), (116, 55510),

Gene: Enby_104 Start: 51921, Stop: 53543, Start Num: 8

Candidate Starts for Enby_104:

(Start: 8 @51921 has 35 MA's), (Start: 23 @52104 has 157 MA's), (25, 52113), (Start: 26 @52116 has 1 MA's), (45, 52458), (48, 52560), (54, 52695), (56, 52725), (58, 52743), (68, 52845), (69, 52863), (70, 52866), (71, 52917), (73, 52935), (79, 52980), (92, 53142), (94, 53166), (97, 53208), (99, 53223), (101, 53289), (105, 53328), (110, 53346), (116, 53421),

Gene: Eradicator_92 Start: 52966, Stop: 54402, Start Num: 23

Candidate Starts for Eradicator_92:

(Start: 23 @52966 has 157 MA's), (25, 52972), (Start: 26 @52975 has 1 MA's), (45, 53317), (48, 53419), (54, 53554), (56, 53584), (58, 53602), (68, 53704), (69, 53722), (70, 53725), (71, 53776), (79, 53839), (92, 54001), (94, 54025), (97, 54067), (99, 54082), (101, 54148), (105, 54187), (110, 54205), (116, 54280),

Gene: Estave1_109 Start: 57990, Stop: 59429, Start Num: 23

Candidate Starts for Estave1_109:

(Start: 23 @57990 has 157 MA's), (25, 57999), (Start: 26 @58002 has 1 MA's), (45, 58344), (48, 58446), (54, 58581), (56, 58611), (58, 58629), (64, 58686), (68, 58731), (69, 58749), (70, 58752), (71, 58803), (79, 58866), (92, 59028), (94, 59052), (97, 59094), (99, 59109), (101, 59175), (105, 59214), (110, 59232), (116, 59307),

Gene: Fancypants_108 Start: 57495, Stop: 58931, Start Num: 23

Candidate Starts for Fancypants_108:

(Start: 23 @57495 has 157 MA's), (25, 57501), (Start: 26 @57504 has 1 MA's), (45, 57846), (48, 57948), (54, 58083), (56, 58113), (58, 58131), (68, 58233), (69, 58251), (70, 58254), (71, 58305), (79, 58368), (92, 58530), (94, 58554), (97, 58596), (99, 58611), (101, 58677), (105, 58716), (110, 58734), (116, 58809),

Gene: Farewell_90 Start: 57991, Stop: 59445, Start Num: 22

Candidate Starts for Farewell_90:

(15, 57958), (20, 57982), (Start: 22 @57991 has 1 MA's), (37, 58180), (41, 58255), (42, 58267), (46, 58408), (62, 58678), (71, 58813), (79, 58876), (89, 59011), (90, 59017), (95, 59086), (99, 59125), (101, 59194), (104, 59230), (105, 59233), (112, 59278), (116, 59323), (117, 59329), (122, 59395),

Gene: Filuzino_101 Start: 56039, Stop: 57532, Start Num: 14

Candidate Starts for Filuzino_101:

(6, 55793), (Start: 8 @55922 has 35 MA's), (Start: 14 @56039 has 1 MA's), (Start: 23 @56096 has 157 MA's), (Start: 26 @56108 has 1 MA's), (45, 56447), (48, 56549), (56, 56714), (64, 56789), (67, 56831), (68, 56834), (70, 56855), (71, 56906), (75, 56936), (79, 56969), (89, 57101), (92, 57131), (94, 57155), (97, 57197), (99, 57212), (103, 57293), (105, 57317), (110, 57335), (116, 57410), (120, 57473), (121, 57476),

Gene: Firehouse51_95 Start: 54914, Stop: 56350, Start Num: 23

Candidate Starts for Firehouse51_95:

(Start: 23 @54914 has 157 MA's), (Start: 26 @54926 has 1 MA's), (45, 55265), (48, 55367), (54, 55502), (56, 55532), (58, 55550), (64, 55607), (68, 55652), (69, 55670), (70, 55673), (71, 55724), (79, 55787), (89, 55919), (92, 55949), (94, 55973), (97, 56015), (99, 56030), (101, 56096), (103, 56111), (105, 56135), (110, 56153), (116, 56228),

Gene: Flathead_103 Start: 54417, Stop: 55853, Start Num: 23

Candidate Starts for Flathead_103:

(6, 54114), (Start: 8 @54243 has 35 MA's), (Start: 23 @54417 has 157 MA's), (Start: 26 @54429 has 1 MA's), (45, 54768), (48, 54870), (56, 55035), (64, 55110), (68, 55155), (70, 55176), (71, 55227), (75, 55257), (79, 55290), (89, 55422), (92, 55452), (94, 55476), (97, 55518), (99, 55533), (101, 55599), (105, 55638), (110, 55656), (116, 55731),

Gene: Florinda_113 Start: 56502, Stop: 57938, Start Num: 23

Candidate Starts for Florinda_113:

(5, 56142), (6, 56199), (Start: 8 @56328 has 35 MA's), (Start: 23 @56502 has 157 MA's), (Start: 26 @56514 has 1 MA's), (45, 56853), (48, 56955), (54, 57090), (56, 57120), (58, 57138), (68, 57240), (69, 57258), (70, 57261), (71, 57312), (75, 57342), (79, 57375), (89, 57507), (92, 57537), (94, 57561), (97, 57603), (99, 57618), (105, 57723), (110, 57741), (116, 57816),

Gene: Frankie_100 Start: 54151, Stop: 55761, Start Num: 8

Candidate Starts for Frankie_100:

(6, 54022), (Start: 8 @54151 has 35 MA's), (Start: 23 @54325 has 157 MA's), (Start: 26 @54337 has 1 MA's), (45, 54676), (48, 54778), (56, 54943), (64, 55018), (68, 55063), (69, 55081), (70, 55084), (71, 55135), (79, 55198), (89, 55330), (92, 55360), (94, 55384), (97, 55426), (99, 55441), (103, 55522), (105, 55546), (110, 55564), (116, 55639), (120, 55702),

Gene: FreddyB_110 Start: 55411, Stop: 57021, Start Num: 8

Candidate Starts for FreddyB_110:

(6, 55282), (Start: 8 @55411 has 35 MA's), (Start: 23 @55585 has 157 MA's), (Start: 26 @55597 has 1 MA's), (45, 55936), (48, 56038), (56, 56203), (58, 56221), (70, 56344), (71, 56395), (75, 56425), (79, 56458), (89, 56590), (92, 56620), (94, 56644), (97, 56686), (99, 56701), (101, 56767), (105, 56806), (110, 56824), (116, 56899),

Gene: Fruitloop_99 Start: 55261, Stop: 56697, Start Num: 23

Candidate Starts for Fruitloop_99:

(6, 54958), (Start: 8 @55087 has 35 MA's), (Start: 23 @55261 has 157 MA's), (Start: 26 @55273 has 1 MA's), (45, 55612), (48, 55714), (56, 55879), (64, 55954), (68, 55999), (70, 56020), (71, 56071), (75, 56101), (79, 56134), (89, 56266), (92, 56296), (94, 56320), (97, 56362), (99, 56377), (103, 56458), (105, 56482), (110, 56500), (116, 56575), (120, 56638), (121, 56641),

Gene: GUmbie_100 Start: 54132, Stop: 55568, Start Num: 23

Candidate Starts for GUmbie_100:

(Start: 23 @54132 has 157 MA's), (25, 54141), (Start: 26 @54144 has 1 MA's), (45, 54483), (48, 54585), (54, 54720), (56, 54750), (58, 54768), (64, 54825), (68, 54870), (69, 54888), (70, 54891), (71, 54942), (79, 55005), (89, 55137), (92, 55167), (94, 55191), (97, 55233), (99, 55248), (103, 55329), (105, 55353), (110, 55371), (116, 55446), (120, 55509), (121, 55512),

Gene: Galactic_105 Start: 54609, Stop: 56045, Start Num: 23

Candidate Starts for Galactic_105:

(Start: 23 @54609 has 157 MA's), (25, 54618), (Start: 26 @54621 has 1 MA's), (45, 54960), (48, 55062), (54, 55197), (56, 55227), (58, 55245), (64, 55302), (68, 55347), (69, 55365), (70, 55368), (71, 55419), (79, 55482), (89, 55614), (92, 55644), (94, 55668), (97, 55710), (99, 55725), (101, 55791), (103, 55806), (105, 55830), (110, 55848), (116, 55923),

Gene: Gandalph_101 Start: 52238, Stop: 53677, Start Num: 23

Candidate Starts for Gandalph_101:

(Start: 23 @52238 has 157 MA's), (25, 52247), (Start: 26 @52250 has 1 MA's), (45, 52592), (48, 52694), (56, 52859), (68, 52979), (69, 52997), (70, 53000), (71, 53051), (75, 53081), (79, 53114), (89, 53246), (92, 53276), (94, 53300), (97, 53342), (99, 53357), (103, 53438), (105, 53462), (110, 53480), (116, 53555), (120, 53618), (121, 53621),

Gene: Geralt_94 Start: 53002, Stop: 54438, Start Num: 23

Candidate Starts for Geralt_94:

(Start: 23 @53002 has 157 MA's), (25, 53008), (Start: 26 @53011 has 1 MA's), (45, 53353), (48, 53455), (54, 53590), (56, 53620), (58, 53638), (68, 53740), (69, 53758), (70, 53761), (71, 53812), (73, 53830), (75, 53842), (79, 53875), (89, 54007), (92, 54037), (94, 54061), (97, 54103), (99, 54118), (101, 54184), (105, 54223), (110, 54241), (116, 54316),

Gene: GigiOuiOui_95 Start: 52951, Stop: 54573, Start Num: 8

Candidate Starts for GigiOuiOui_95:

(Start: 8 @52951 has 35 MA's), (Start: 23 @53134 has 157 MA's), (25, 53143), (Start: 26 @53146 has 1 MA's), (45, 53488), (48, 53590), (54, 53725), (56, 53755), (58, 53773), (64, 53830), (68, 53875), (69, 53893), (70, 53896), (71, 53947), (79, 54010), (89, 54142), (92, 54172), (94, 54196), (97, 54238), (99, 54253), (101, 54319), (103, 54334), (105, 54358), (110, 54376), (116, 54451),

Gene: Girafales_110 Start: 56107, Stop: 57543, Start Num: 23

Candidate Starts for Girafales_110:

(5, 55747), (6, 55804), (Start: 8 @55933 has 35 MA's), (Start: 23 @56107 has 157 MA's), (Start: 26 @56119 has 1 MA's), (45, 56458), (48, 56560), (54, 56695), (56, 56725), (58, 56743), (68, 56845), (69, 56863), (70, 56866), (71, 56917), (75, 56947), (79, 56980), (89, 57112), (92, 57142), (94, 57166), (97, 57208), (99, 57223), (103, 57304), (105, 57328), (110, 57346), (116, 57421), (120, 57484),

Gene: Girr_100 Start: 54991, Stop: 56427, Start Num: 23

Candidate Starts for Girr_100:

(Start: 8 @54817 has 35 MA's), (Start: 23 @54991 has 157 MA's), (Start: 26 @55003 has 1 MA's), (45, 55342), (48, 55444), (54, 55579), (56, 55609), (58, 55627), (68, 55729), (69, 55747), (70, 55750), (71, 55801), (73, 55819), (75, 55831), (79, 55864), (89, 55996), (92, 56026), (94, 56050), (97, 56092), (99, 56107), (101, 56173), (105, 56212), (110, 56230), (116, 56305),

Gene: Gorge_100 Start: 55222, Stop: 56658, Start Num: 23

Candidate Starts for Gorge_100:

(Start: 23 @55222 has 157 MA's), (24, 55228), (Start: 26 @55231 has 1 MA's), (45, 55573), (48, 55675), (54, 55810), (56, 55840), (58, 55858), (68, 55960), (69, 55978), (70, 55981), (71, 56032), (73, 56050), (75, 56062), (79, 56095), (89, 56227), (92, 56257), (94, 56281), (97, 56323), (99, 56338), (103, 56419), (105, 56443), (110, 56461), (116, 56536), (120, 56599),

Gene: Guppsters_95 Start: 52102, Stop: 53538, Start Num: 23

Candidate Starts for Guppsters_95:

(5, 51742), (6, 51799), (Start: 8 @51928 has 35 MA's), (Start: 23 @52102 has 157 MA's), (Start: 26 @52114 has 1 MA's), (45, 52453), (48, 52555), (50, 52576), (56, 52720), (58, 52738), (60, 52750), (70, 52861), (71, 52912), (75, 52942), (79, 52975), (89, 53107), (92, 53137), (94, 53161), (97, 53203), (99, 53218), (103, 53299), (105, 53323), (110, 53341), (116, 53416), (120, 53479),

Gene: Hades_98 Start: 51775, Stop: 53214, Start Num: 23

Candidate Starts for Hades_98:

(Start: 23 @51775 has 157 MA's), (25, 51784), (Start: 26 @51787 has 1 MA's), (45, 52129), (48, 52231), (56, 52396), (64, 52471), (68, 52516), (69, 52534), (70, 52537), (71, 52588), (79, 52651), (89, 52783), (92, 52813), (94, 52837), (97, 52879), (99, 52894), (103, 52975), (105, 52999), (110, 53017), (116, 53092), (120, 53155), (121, 53158),

Gene: Hamulus_101 Start: 53946, Stop: 55382, Start Num: 23

Candidate Starts for Hamulus_101:

(6, 53643), (Start: 8 @53772 has 35 MA's), (Start: 23 @53946 has 157 MA's), (Start: 26 @53958 has 1 MA's), (45, 54297), (48, 54399), (50, 54420), (56, 54564), (64, 54639), (68, 54684), (70, 54705), (71, 54756), (75, 54786), (79, 54819), (89, 54951), (92, 54981), (94, 55005), (97, 55047), (99, 55062), (103, 55143), (105, 55167), (110, 55185), (116, 55260), (120, 55323), (121, 55326),

Gene: Harley_102 Start: 54944, Stop: 56554, Start Num: 8

Candidate Starts for Harley_102:

(Start: 8 @54944 has 35 MA's), (Start: 23 @55118 has 157 MA's), (Start: 26 @55130 has 1 MA's), (45, 55469), (48, 55571), (54, 55706), (56, 55736), (58, 55754), (64, 55811), (68, 55856), (69, 55874), (70, 55877), (71, 55928), (79, 55991), (89, 56123), (92, 56153), (94, 56177), (97, 56219), (99, 56234), (101, 56300), (103, 56315), (105, 56339), (110, 56357), (116, 56432),

Gene: Hegedechwinu_109 Start: 54494, Stop: 55918, Start Num: 26

Candidate Starts for Hegedechwinu_109:

(6, 54179), (Start: 8 @54308 has 35 MA's), (Start: 23 @54482 has 157 MA's), (Start: 26 @54494 has 1 MA's), (45, 54833), (48, 54935), (54, 55070), (56, 55100), (58, 55118), (64, 55175), (68, 55220), (69, 55238), (70, 55241), (71, 55292), (79, 55355), (92, 55517), (94, 55541), (97, 55583), (99, 55598), (101, 55664), (105, 55703), (110, 55721), (116, 55796),

Gene: Hlubikazi_99 Start: 52734, Stop: 54173, Start Num: 23

Candidate Starts for Hlubikazi_99:

(6, 52422), (Start: 8 @52551 has 35 MA's), (Start: 23 @52734 has 157 MA's), (25, 52743), (Start: 26 @52746 has 1 MA's), (45, 53088), (48, 53190), (54, 53325), (56, 53355), (58, 53373), (68, 53475), (69, 53493), (70, 53496), (71, 53547), (79, 53610), (89, 53742), (92, 53772), (94, 53796), (97, 53838), (99, 53853), (101, 53919), (103, 53934), (105, 53958), (110, 53976), (116, 54051), (120, 54114),

Gene: lbOuu_97 Start: 52088, Stop: 53524, Start Num: 23

Candidate Starts for lbOuu_97:

(5, 51728), (6, 51785), (Start: 8 @51914 has 35 MA's), (Start: 23 @52088 has 157 MA's), (Start: 26 @52100 has 1 MA's), (45, 52439), (48, 52541), (56, 52706), (64, 52781), (68, 52826), (69, 52844), (70, 52847), (71, 52898), (75, 52928), (79, 52961), (92, 53123), (94, 53147), (97, 53189), (99, 53204), (101, 53270), (105, 53309), (110, 53327), (116, 53402), (120, 53465), (121, 53468),

Gene: lbhubesi_97 Start: 51813, Stop: 53423, Start Num: 8

Candidate Starts for lbhubesi_97:

(Start: 8 @51813 has 35 MA's), (Start: 23 @51987 has 157 MA's), (Start: 26 @51999 has 1 MA's), (45, 52338), (48, 52440), (54, 52575), (56, 52605), (58, 52623), (64, 52680), (68, 52725), (69, 52743), (70, 52746), (71, 52797), (79, 52860), (89, 52992), (92, 53022), (94, 53046), (97, 53088), (99, 53103), (101, 53169), (103, 53184), (105, 53208), (110, 53226), (116, 53301),

Gene: Inventum_99 Start: 54290, Stop: 55726, Start Num: 23

Candidate Starts for Inventum_99:

(Start: 23 @54290 has 157 MA's), (25, 54296), (Start: 26 @54299 has 1 MA's), (45, 54641), (48, 54743), (54, 54878), (56, 54908), (58, 54926), (68, 55028), (69, 55046), (70, 55049), (71, 55100), (73, 55118), (75, 55130), (79, 55163), (89, 55295), (92, 55325), (94, 55349), (97, 55391), (99, 55406), (101, 55472), (105, 55511), (110, 55529), (116, 55604),

Gene: JalFarm20_110 Start: 56423, Stop: 57859, Start Num: 23

Candidate Starts for JalFarm20_110:

(6, 56120), (Start: 8 @56249 has 35 MA's), (Start: 23 @56423 has 157 MA's), (Start: 26 @56435 has 1 MA's), (45, 56774), (48, 56876), (56, 57041), (64, 57116), (67, 57158), (68, 57161), (70, 57182), (71, 57233), (75, 57263), (79, 57296), (87, 57419), (89, 57428), (92, 57458), (94, 57482), (97, 57524), (99, 57539), (103, 57620), (105, 57644), (110, 57662), (116, 57737), (120, 57800), (121, 57803),

Gene: James_105 Start: 56883, Stop: 58319, Start Num: 23

Candidate Starts for James_105:

(Start: 23 @56883 has 157 MA's), (Start: 26 @56895 has 1 MA's), (45, 57234), (48, 57336), (50, 57357), (54, 57471), (56, 57501), (58, 57519), (68, 57621), (69, 57639), (70, 57642), (71, 57693), (79, 57756), (89, 57888), (92, 57918), (94, 57942), (97, 57984), (99, 57999), (101, 58065), (105, 58104), (110, 58122), (116, 58197),

Gene: Jacob_104 Start: 56203, Stop: 57639, Start Num: 23

Candidate Starts for Jacob_104:

(Start: 23 @56203 has 157 MA's), (25, 56209), (Start: 26 @56212 has 1 MA's), (45, 56554), (48, 56656), (54, 56791), (56, 56821), (58, 56839), (68, 56941), (69, 56959), (70, 56962), (71, 57013), (73, 57031), (75, 57043), (79, 57076), (89, 57208), (92, 57238), (94, 57262), (97, 57304), (99, 57319), (105, 57424), (110, 57442), (116, 57517),

Gene: Job42_103 Start: 57057, Stop: 58493, Start Num: 23

Candidate Starts for Job42_103:

(Start: 23 @57057 has 157 MA's), (Start: 26 @57069 has 1 MA's), (45, 57408), (48, 57510), (54, 57645), (56, 57675), (58, 57693), (64, 57750), (68, 57795), (69, 57813), (70, 57816), (71, 57867), (75, 57897), (79, 57930), (89, 58062), (92, 58092), (94, 58116), (97, 58158), (99, 58173), (110, 58296), (116, 58371),

Gene: JoeyJr_104 Start: 56198, Stop: 57634, Start Num: 23

Candidate Starts for JoeyJr_104:

(Start: 23 @56198 has 157 MA's), (25, 56204), (Start: 26 @56207 has 1 MA's), (45, 56549), (48, 56651), (54, 56786), (56, 56816), (58, 56834), (68, 56936), (69, 56954), (70, 56957), (71, 57008), (73, 57026), (75, 57038), (79, 57071), (89, 57203), (92, 57233), (94, 57257), (97, 57299), (99, 57314), (101, 57380), (105, 57419), (110, 57437), (116, 57512),

Gene: Juice456_100 Start: 53907, Stop: 55343, Start Num: 23

Candidate Starts for Juice456_100:

(Start: 8 @53724 has 35 MA's), (Start: 23 @53907 has 157 MA's), (24, 53913), (Start: 26 @53916 has 1 MA's), (45, 54258), (48, 54360), (56, 54525), (64, 54600), (68, 54645), (70, 54666), (71, 54717), (75, 54747), (79, 54780), (89, 54912), (92, 54942), (94, 54966), (97, 55008), (99, 55023), (103, 55104), (105, 55128), (110, 55146), (116, 55221), (120, 55284), (121, 55287),

Gene: Juniper1_95 Start: 52711, Stop: 54321, Start Num: 8

Candidate Starts for Juniper1_95:

(5, 52525), (6, 52582), (Start: 8 @52711 has 35 MA's), (Start: 23 @52885 has 157 MA's), (Start: 26 @52897 has 1 MA's), (45, 53236), (48, 53338), (54, 53473), (56, 53503), (58, 53521), (68, 53623), (69, 53641), (70, 53644), (71, 53695), (79, 53758), (89, 53890), (92, 53920), (94, 53944), (97, 53986), (99, 54001), (103, 54082), (105, 54106), (110, 54124), (116, 54199), (120, 54262),

Gene: Karhdo_97 Start: 52646, Stop: 54082, Start Num: 23

Candidate Starts for Karhdo_97:

(Start: 23 @52646 has 157 MA's), (Start: 26 @52658 has 1 MA's), (45, 52997), (48, 53099), (54, 53234), (56, 53264), (58, 53282), (68, 53384), (69, 53402), (70, 53405), (71, 53456), (79, 53519), (89, 53651), (92, 53681), (94, 53705), (97, 53747), (99, 53762), (101, 53828), (105, 53867), (110, 53885), (116, 53960),

Gene: Kenuha5_93 Start: 53770, Stop: 55206, Start Num: 23

Candidate Starts for Kenuha5_93:

(6, 53467), (Start: 8 @53596 has 35 MA's), (Start: 23 @53770 has 157 MA's), (Start: 26 @53782 has 1 MA's), (45, 54121), (48, 54223), (56, 54388), (70, 54529), (71, 54580), (75, 54610), (79, 54643), (89, 54775), (92, 54805), (94, 54829), (97, 54871), (99, 54886), (103, 54967), (105, 54991), (110, 55009), (116, 55084), (120, 55147),

Gene: Kersh_103 Start: 56765, Stop: 58375, Start Num: 8

Candidate Starts for Kersh_103:

(Start: 8 @56765 has 35 MA's), (Start: 23 @56939 has 157 MA's), (Start: 26 @56951 has 1 MA's), (45, 57290), (48, 57392), (54, 57527), (56, 57557), (58, 57575), (68, 57677), (69, 57695), (70, 57698), (71, 57749), (79, 57812), (89, 57944), (92, 57974), (94, 57998), (97, 58040), (99, 58055), (101, 58121), (103, 58136), (105, 58160), (110, 58178), (116, 58253),

Gene: Kimberlium_102 Start: 53824, Stop: 55443, Start Num: 8

Candidate Starts for Kimberlium_102:

(Start: 8 @53824 has 35 MA's), (Start: 23 @54007 has 157 MA's), (24, 54013), (Start: 26 @54016 has 1 MA's), (45, 54358), (48, 54460), (56, 54625), (64, 54700), (68, 54745), (70, 54766), (71, 54817), (75, 54847), (79, 54880), (89, 55012), (92, 55042), (94, 55066), (97, 55108), (99, 55123), (103, 55204), (105, 55228), (110, 55246), (116, 55321), (120, 55384), (121, 55387),

Gene: KingMidas_101 Start: 54427, Stop: 55863, Start Num: 23

Candidate Starts for KingMidas_101:

(Start: 23 @54427 has 157 MA's), (25, 54433), (Start: 26 @54436 has 1 MA's), (45, 54778), (48, 54880), (54, 55015), (56, 55045), (58, 55063), (68, 55165), (69, 55183), (70, 55186), (71, 55237), (73, 55255), (75, 55267), (79, 55300), (89, 55432), (92, 55462), (94, 55486), (97, 55528), (99, 55543), (101, 55609), (105, 55648), (110, 55666), (116, 55741),

Gene: Kingsley_110 Start: 57955, Stop: 59391, Start Num: 23

Candidate Starts for Kingsley_110:

(6, 57652), (Start: 8 @57781 has 35 MA's), (Start: 23 @57955 has 157 MA's), (Start: 26 @57967 has 1 MA's), (45, 58306), (48, 58408), (56, 58573), (70, 58714), (71, 58765), (75, 58795), (79, 58828), (89, 58960), (92, 58990), (94, 59014), (97, 59056), (99, 59071), (103, 59152), (105, 59176), (110, 59194), (116, 59269), (120, 59332),

Gene: Koella_94 Start: 51356, Stop: 52792, Start Num: 23

Candidate Starts for Koella_94:

(6, 51053), (Start: 8 @51182 has 35 MA's), (Start: 23 @51356 has 157 MA's), (Start: 26 @51368 has 1 MA's), (45, 51707), (48, 51809), (56, 51974), (58, 51992), (70, 52115), (71, 52166), (75, 52196), (79, 52229), (89, 52361), (92, 52391), (94, 52415), (97, 52457), (99, 52472), (101, 52538), (105, 52577), (110, 52595), (116, 52670),

Gene: Krakatau_94 Start: 50325, Stop: 51761, Start Num: 23

Candidate Starts for Krakatau_94:

(Start: 23 @50325 has 157 MA's), (25, 50334), (Start: 26 @50337 has 1 MA's), (45, 50676), (48, 50778), (56, 50943), (64, 51018), (68, 51063), (70, 51084), (71, 51135), (75, 51165), (79, 51198), (89, 51330), (92, 51360), (94, 51384), (97, 51426), (99, 51441), (103, 51522), (105, 51546), (110, 51564), (116, 51639), (120, 51702), (121, 51705),

Gene: KristaRAM_110 Start: 55967, Stop: 57403, Start Num: 23

Candidate Starts for KristaRAM_110:

(Start: 23 @55967 has 157 MA's), (Start: 26 @55979 has 1 MA's), (45, 56318), (48, 56420), (54, 56555), (56, 56585), (58, 56603), (64, 56660), (68, 56705), (69, 56723), (70, 56726), (71, 56777), (79, 56840), (89, 56972), (92, 57002), (94, 57026), (97, 57068), (99, 57083), (101, 57149), (105, 57188), (110, 57206), (116, 57281),

Gene: LastJedi_92 Start: 52413, Stop: 53849, Start Num: 23

Candidate Starts for LastJedi_92:

(6, 52110), (Start: 8 @52239 has 35 MA's), (Start: 23 @52413 has 157 MA's), (Start: 26 @52425 has 1 MA's), (45, 52764), (48, 52866), (56, 53031), (58, 53049), (70, 53172), (71, 53223), (75, 53253), (79, 53286), (89, 53418), (92, 53448), (94, 53472), (97, 53514), (99, 53529), (101, 53595), (105, 53634), (110, 53652), (116, 53727),

Gene: Latretium_104 Start: 55469, Stop: 56908, Start Num: 23

Candidate Starts for Latretium_104:

(Start: 23 @55469 has 157 MA's), (25, 55478), (Start: 26 @55481 has 1 MA's), (45, 55823), (48, 55925), (54, 56060), (56, 56090), (58, 56108), (68, 56210), (69, 56228), (70, 56231), (71, 56282), (79, 56345), (92, 56507), (94, 56531), (97, 56573), (99, 56588), (101, 56654), (103, 56669), (105, 56693), (110, 56711), (116, 56786),

Gene: Leozinho_97 Start: 51762, Stop: 53372, Start Num: 8

Candidate Starts for Leozinho_97:

(Start: 8 @51762 has 35 MA's), (Start: 23 @51936 has 157 MA's), (Start: 26 @51948 has 1 MA's), (45, 52287), (48, 52389), (54, 52524), (56, 52554), (58, 52572), (68, 52674), (69, 52692), (70, 52695), (71, 52746), (79, 52809), (92, 52971), (94, 52995), (97, 53037), (99, 53052), (105, 53157), (110, 53175), (116, 53250),

Gene: Leperchaun_103 Start: 55432, Stop: 56868, Start Num: 23

Candidate Starts for Leperchaun_103:

(Start: 23 @55432 has 157 MA's), (25, 55438), (Start: 26 @55441 has 1 MA's), (45, 55783), (48, 55885), (54, 56020), (56, 56050), (58, 56068), (68, 56170), (69, 56188), (70, 56191), (71, 56242), (73, 56260), (75, 56272), (79, 56305), (89, 56437), (92, 56467), (94, 56491), (97, 56533), (99, 56548), (101, 56614), (105, 56653), (110, 56671), (116, 56746),

Gene: LilMoolah_104 Start: 55403, Stop: 56839, Start Num: 23

Candidate Starts for LilMoolah_104:

(Start: 23 @55403 has 157 MA's), (25, 55412), (Start: 26 @55415 has 1 MA's), (45, 55754), (48, 55856), (54, 55991), (56, 56021), (58, 56039), (68, 56141), (69, 56159), (70, 56162), (71, 56213), (75, 56243), (79, 56276), (89, 56408), (92, 56438), (94, 56462), (97, 56504), (99, 56519), (103, 56600), (105, 56624), (110, 56642), (116, 56717), (120, 56780), (121, 56783),

Gene: LittleShirley_108 Start: 55790, Stop: 57226, Start Num: 23

Candidate Starts for LittleShirley_108:

(6, 55487), (Start: 8 @55616 has 35 MA's), (Start: 23 @55790 has 157 MA's), (Start: 26 @55802 has 1 MA's), (45, 56141), (48, 56243), (50, 56264), (56, 56408), (64, 56483), (68, 56528), (70, 56549), (71, 56600), (75, 56630), (79, 56663), (89, 56795), (92, 56825), (94, 56849), (97, 56891), (99, 56906), (103, 56987), (105, 57011), (110, 57029), (116, 57104), (120, 57167), (121, 57170),

Gene: Lizziana_102 Start: 55661, Stop: 57097, Start Num: 23

Candidate Starts for Lizziana_102:

(6, 55358), (Start: 8 @55487 has 35 MA's), (Start: 23 @55661 has 157 MA's), (Start: 26 @55673 has 1 MA's), (45, 56012), (48, 56114), (56, 56279), (58, 56297), (70, 56420), (71, 56471), (75, 56501), (79, 56534), (89, 56666), (92, 56696), (94, 56720), (97, 56762), (99, 56777), (101, 56843), (105, 56882), (110, 56900), (116, 56975),

Gene: Llij_96 Start: 53354, Stop: 54793, Start Num: 23

Candidate Starts for Llij_96:

(Start: 23 @53354 has 157 MA's), (25, 53363), (Start: 26 @53366 has 1 MA's), (45, 53708), (48, 53810), (54, 53945), (56, 53975), (58, 53993), (68, 54095), (69, 54113), (70, 54116), (71, 54167), (79, 54230), (89, 54362), (92, 54392), (94, 54416), (97, 54458), (99, 54473), (101, 54539), (105, 54578), (110, 54596), (116, 54671),

Gene: Lorde_103 Start: 51086, Stop: 52708, Start Num: 8

Candidate Starts for Lorde_103:

(Start: 8 @51086 has 35 MA's), (Start: 23 @51269 has 157 MA's), (25, 51278), (Start: 26 @51281 has 1 MA's), (45, 51623), (48, 51725), (54, 51860), (56, 51890), (58, 51908), (68, 52010), (69, 52028), (70, 52031), (71, 52082), (73, 52100), (79, 52145), (92, 52307), (94, 52331), (97, 52373), (99, 52388), (101, 52454), (105, 52493), (110, 52511), (116, 52586),

Gene: LunaBlu_107 Start: 55857, Stop: 57467, Start Num: 8

Candidate Starts for LunaBlu_107:

(Start: 8 @55857 has 35 MA's), (Start: 23 @56031 has 157 MA's), (Start: 26 @56043 has 1 MA's), (45, 56382), (48, 56484), (54, 56619), (56, 56649), (58, 56667), (64, 56724), (68, 56769), (69, 56787), (70, 56790), (71, 56841), (79, 56904), (89, 57036), (92, 57066), (94, 57090), (97, 57132), (99, 57147), (101, 57213), (103, 57228), (105, 57252), (110, 57270), (116, 57345),

Gene: LunaStella_88 Start: 52764, Stop: 54188, Start Num: 25

Candidate Starts for LunaStella_88:

(Start: 23 @52755 has 157 MA's), (25, 52764), (Start: 29 @52788 has 1 MA's), (39, 52992), (45, 53100), (47, 53184), (48, 53205), (54, 53340), (56, 53370), (58, 53388), (71, 53562), (72, 53574), (79, 53625), (85, 53685), (87, 53748), (89, 53757), (92, 53787), (94, 53811), (99, 53868), (105, 53973), (110, 53991), (116, 54066), (119, 54111),

Gene: MadMen_106 Start: 55023, Stop: 56462, Start Num: 23

Candidate Starts for MadMen_106:

(Start: 23 @55023 has 157 MA's), (25, 55032), (Start: 26 @55035 has 1 MA's), (45, 55377), (48, 55479), (54, 55614), (56, 55644), (58, 55662), (68, 55764), (69, 55782), (70, 55785), (71, 55836), (73, 55854), (75, 55866), (79, 55899), (89, 56031), (92, 56061), (94, 56085), (97, 56127), (99, 56142), (105, 56247), (110, 56265), (116, 56340),

Gene: Madiba_100 Start: 53711, Stop: 55147, Start Num: 23

Candidate Starts for Madiba_100:

(Start: 23 @53711 has 157 MA's), (25, 53720), (Start: 26 @53723 has 1 MA's), (45, 54062), (48, 54164), (54, 54299), (56, 54329), (58, 54347), (68, 54449), (69, 54467), (70, 54470), (71, 54521), (79, 54584), (89, 54716), (92, 54746), (94, 54770), (97, 54812), (99, 54827), (101, 54893), (103, 54908), (105, 54932), (110, 54950), (116, 55025), (120, 55088),

Gene: Mahavrat_94 Start: 51740, Stop: 53350, Start Num: 8

Candidate Starts for Mahavrat_94:

(5, 51554), (6, 51611), (Start: 8 @51740 has 35 MA's), (Start: 23 @51914 has 157 MA's), (Start: 26 @51926 has 1 MA's), (45, 52265), (48, 52367), (54, 52502), (56, 52532), (58, 52550), (70, 52673), (71, 52724), (79, 52787), (89, 52919), (92, 52949), (94, 52973), (97, 53015), (99, 53030), (101, 53096), (105, 53135), (110, 53153), (116, 53228),

Gene: Mandlovu_99 Start: 52676, Stop: 54115, Start Num: 23

Candidate Starts for Mandlovu_99:

(6, 52364), (Start: 8 @52493 has 35 MA's), (Start: 23 @52676 has 157 MA's), (25, 52685), (Start: 26 @52688 has 1 MA's), (45, 53030), (48, 53132), (54, 53267), (56, 53297), (58, 53315), (68, 53417), (69, 53435), (70, 53438), (71, 53489), (79, 53552), (89, 53684), (92, 53714), (94, 53738), (97, 53780), (99, 53795), (101, 53861), (103, 53876), (105, 53900), (110, 53918), (116, 53993), (120, 54056),

Gene: Mantra_98 Start: 53847, Stop: 55469, Start Num: 8

Candidate Starts for Mantra_98:

(Start: 8 @53847 has 35 MA's), (Start: 23 @54030 has 157 MA's), (25, 54039), (Start: 26 @54042 has 1 MA's), (45, 54384), (48, 54486), (54, 54621), (56, 54651), (58, 54669), (68, 54771), (69, 54789), (70, 54792), (71, 54843), (73, 54861), (79, 54906), (92, 55068), (94, 55092), (97, 55134), (99, 55149), (101, 55215), (105, 55254), (110, 55272), (116, 55347),

Gene: Maravista_99 Start: 56610, Stop: 58046, Start Num: 23

Candidate Starts for Maravista_99:

(Start: 23 @56610 has 157 MA's), (Start: 26 @56622 has 1 MA's), (45, 56961), (48, 57063), (56, 57228), (57, 57240), (63, 57300), (64, 57303), (68, 57348), (69, 57366), (70, 57369), (71, 57420), (75, 57450), (79, 57483), (92, 57645), (94, 57669), (97, 57711), (99, 57726), (101, 57792), (105, 57831), (110, 57849), (116, 57924),

Gene: Marker_114 Start: 55630, Stop: 57252, Start Num: 8

Candidate Starts for Marker_114:

(Start: 8 @55630 has 35 MA's), (Start: 23 @55813 has 157 MA's), (25, 55822), (Start: 26 @55825 has 1 MA's), (45, 56167), (48, 56269), (54, 56404), (56, 56434), (58, 56452), (64, 56509), (68, 56554), (69, 56572), (70, 56575), (71, 56626), (79, 56689), (89, 56821), (92, 56851), (94, 56875), (97, 56917), (99, 56932), (101, 56998), (105, 57037), (110, 57055), (116, 57130), (120, 57193),

Gene: Martik_100 Start: 56104, Stop: 57558, Start Num: 18

Candidate Starts for Martik_100:

(16, 56095), (Start: 18 @56104 has 2 MA's), (Start: 23 @56122 has 157 MA's), (Start: 26 @56134 has 1 MA's), (45, 56473), (48, 56575), (54, 56710), (56, 56740), (58, 56758), (68, 56860), (69, 56878), (70, 56881), (71, 56932), (73, 56950), (75, 56962), (79, 56995), (89, 57127), (92, 57157), (94, 57181), (97, 57223), (99, 57238), (105, 57343), (110, 57361), (116, 57436),

Gene: Mattes_102 Start: 55340, Stop: 56776, Start Num: 23

Candidate Starts for Mattes_102:

(Start: 23 @55340 has 157 MA's), (25, 55346), (Start: 26 @55349 has 1 MA's), (45, 55691), (48, 55793), (54, 55928), (56, 55958), (58, 55976), (68, 56078), (69, 56096), (70, 56099), (71, 56150), (73, 56168), (75, 56180), (79, 56213), (89, 56345), (92, 56375), (94, 56399), (97, 56441), (99, 56456), (105, 56561), (110, 56579), (116, 56654),

Gene: Melissauren88_91 Start: 51146, Stop: 52582, Start Num: 23

Candidate Starts for Melissauren88_91:

(6, 50843), (Start: 8 @50972 has 35 MA's), (Start: 23 @51146 has 157 MA's), (Start: 26 @51158 has 1 MA's), (45, 51497), (48, 51599), (56, 51764), (64, 51839), (68, 51884), (70, 51905), (71, 51956), (75, 51986), (79, 52019), (89, 52151), (92, 52181), (94, 52205), (97, 52247), (99, 52262), (103, 52343), (105, 52367), (110, 52385), (116, 52460), (120, 52523), (121, 52526),

Gene: MilanaBonita_94 Start: 53042, Stop: 54478, Start Num: 23

Candidate Starts for MilanaBonita_94:

(6, 52739), (Start: 8 @52868 has 35 MA's), (Start: 23 @53042 has 157 MA's), (Start: 26 @53054 has 1 MA's), (45, 53393), (48, 53495), (50, 53516), (56, 53660), (64, 53735), (68, 53780), (69, 53798), (70, 53801), (71, 53852), (75, 53882), (79, 53915), (89, 54047), (92, 54077), (94, 54101), (97, 54143), (99, 54158), (103, 54239), (105, 54263), (110, 54281), (116, 54356), (120, 54419), (121, 54422),

Gene: MilleniumForce_101 Start: 54849, Stop: 56285, Start Num: 23

Candidate Starts for MilleniumForce_101:

(6, 54546), (Start: 8 @54675 has 35 MA's), (Start: 23 @54849 has 157 MA's), (Start: 26 @54861 has 1 MA's), (45, 55200), (48, 55302), (56, 55467), (64, 55542), (68, 55587), (69, 55605), (70, 55608), (71, 55659), (79, 55722), (88, 55851), (89, 55854), (92, 55884), (94, 55908), (97, 55950), (99, 55965), (103, 56046), (105, 56070), (110, 56088), (116, 56163), (120, 56226), (121, 56229),

Gene: MinionDave_99 Start: 54815, Stop: 56254, Start Num: 23

Candidate Starts for MinionDave_99:

(Start: 23 @54815 has 157 MA's), (25, 54824), (Start: 26 @54827 has 1 MA's), (45, 55169), (48, 55271), (56, 55436), (64, 55511), (68, 55556), (69, 55574), (70, 55577), (71, 55628), (79, 55691), (89, 55823), (92, 55853), (94, 55877), (97, 55919), (99, 55934), (103, 56015), (105, 56039), (110, 56057), (116, 56132), (120, 56195), (121, 56198),

Gene: Minnie_96 Start: 55752, Stop: 57188, Start Num: 23

Candidate Starts for Minnie_96:

(Start: 23 @55752 has 157 MA's), (25, 55761), (Start: 26 @55764 has 1 MA's), (45, 56103), (48, 56205), (54, 56340), (56, 56370), (58, 56388), (68, 56490), (69, 56508), (70, 56511), (71, 56562), (79, 56625), (92, 56787), (94, 56811), (97, 56853), (99, 56868), (101, 56934), (105, 56973), (110, 56991), (116, 57066),

Gene: Misha28_91 Start: 55106, Stop: 56542, Start Num: 23

Candidate Starts for Misha28_91:

(Start: 23 @55106 has 157 MA's), (45, 55457), (47, 55538), (48, 55559), (56, 55724), (67, 55841), (70, 55865), (71, 55916), (84, 56027), (89, 56111), (92, 56141), (94, 56165), (97, 56207), (99, 56222), (101, 56288), (103, 56303), (105, 56327), (110, 56345), (116, 56420), (120, 56483),

Gene: MisterCuddles_101 Start: 54991, Stop: 56427, Start Num: 23

Candidate Starts for MisterCuddles_101:

(Start: 8 @54817 has 35 MA's), (Start: 23 @54991 has 157 MA's), (Start: 26 @55003 has 1 MA's), (45, 55342), (48, 55444), (54, 55579), (56, 55609), (58, 55627), (68, 55729), (69, 55747), (70, 55750),

(71, 55801), (73, 55819), (75, 55831), (79, 55864), (89, 55996), (92, 56026), (94, 56050), (97, 56092), (99, 56107), (101, 56173), (105, 56212), (110, 56230), (116, 56305),

Gene: MooMoo_94 Start: 52213, Stop: 53643, Start Num: 23

Candidate Starts for MooMoo_94:

(Start: 23 @52213 has 157 MA's), (25, 52222), (32, 52303), (36, 52363), (45, 52558), (48, 52660), (54, 52795), (56, 52825), (60, 52855), (67, 52942), (68, 52945), (69, 52963), (70, 52966), (71, 53017), (81, 53098), (89, 53212), (92, 53242), (94, 53266), (99, 53323), (105, 53428), (110, 53446), (116, 53521),

Gene: Moonbeam_104 Start: 55247, Stop: 56686, Start Num: 23

Candidate Starts for Moonbeam_104:

(Start: 23 @55247 has 157 MA's), (25, 55256), (Start: 26 @55259 has 1 MA's), (45, 55601), (48, 55703), (56, 55868), (68, 55988), (69, 56006), (70, 56009), (71, 56060), (75, 56090), (79, 56123), (89, 56255), (92, 56285), (94, 56309), (97, 56351), (99, 56366), (103, 56447), (105, 56471), (110, 56489), (116, 56564),

Gene: Mova_103 Start: 54779, Stop: 56215, Start Num: 23

Candidate Starts for Mova_103:

(6, 54476), (Start: 8 @54605 has 35 MA's), (Start: 23 @54779 has 157 MA's), (Start: 26 @54791 has 1 MA's), (45, 55130), (48, 55232), (56, 55397), (64, 55472), (68, 55517), (70, 55538), (71, 55589), (75, 55619), (79, 55652), (89, 55784), (92, 55814), (94, 55838), (97, 55880), (99, 55895), (103, 55976), (105, 56000), (110, 56018), (116, 56093), (120, 56156), (121, 56159),

Gene: Mozy_105 Start: 54414, Stop: 55850, Start Num: 23

Candidate Starts for Mozy_105:

(6, 54111), (Start: 8 @54240 has 35 MA's), (Start: 23 @54414 has 157 MA's), (Start: 26 @54426 has 1 MA's), (45, 54765), (48, 54867), (56, 55032), (64, 55107), (68, 55152), (70, 55173), (71, 55224), (75, 55254), (79, 55287), (89, 55419), (92, 55449), (94, 55473), (97, 55515), (99, 55530), (101, 55596), (105, 55635), (110, 55653), (116, 55728),

Gene: Ms6_103 Start: 51037, Stop: 52473, Start Num: 23

Candidate Starts for Ms6_103:

(6, 50734), (Start: 8 @50863 has 35 MA's), (Start: 23 @51037 has 157 MA's), (Start: 26 @51049 has 1 MA's), (45, 51388), (48, 51490), (50, 51511), (56, 51655), (64, 51730), (68, 51775), (70, 51796), (71, 51847), (75, 51877), (79, 51910), (89, 52042), (92, 52072), (94, 52096), (97, 52138), (99, 52153), (103, 52234), (105, 52258), (110, 52276), (116, 52351), (120, 52414), (121, 52417),

Gene: MulchSalad_103 Start: 55680, Stop: 57119, Start Num: 23

Candidate Starts for MulchSalad_103:

(Start: 23 @55680 has 157 MA's), (25, 55689), (Start: 26 @55692 has 1 MA's), (45, 56034), (48, 56136), (54, 56271), (56, 56301), (58, 56319), (64, 56376), (68, 56421), (69, 56439), (70, 56442), (71, 56493), (79, 56556), (89, 56688), (92, 56718), (94, 56742), (97, 56784), (99, 56799), (103, 56880), (105, 56904), (110, 56922), (116, 56997), (120, 57060), (121, 57063),

Gene: Mutaforma13_102 Start: 54449, Stop: 55885, Start Num: 23

Candidate Starts for Mutaforma13_102:

(Start: 23 @54449 has 157 MA's), (Start: 26 @54461 has 1 MA's), (45, 54800), (48, 54902), (54, 55037), (56, 55067), (58, 55085), (64, 55142), (68, 55187), (69, 55205), (70, 55208), (71, 55259), (79, 55322), (89, 55454), (92, 55484), (94, 55508), (97, 55550), (99, 55565), (101, 55631), (103, 55646), (105, 55670), (110, 55688), (116, 55763),

Gene: Myrna_234 Start: 135813, Stop: 137252, Start Num: 29

Candidate Starts for Myrna_234:

(10, 135681), (11, 135690), (12, 135702), (21, 135768), (Start: 23 @135780 has 157 MA's), (24, 135786), (28, 135801), (Start: 29 @135813 has 1 MA's), (30, 135828), (35, 135936), (38, 136020), (41, 136056), (45, 136158), (48, 136269), (52, 136311), (53, 136398), (55, 136407), (56, 136434), (59, 136464), (61, 136482), (64, 136509), (66, 136560), (69, 136584), (70, 136587), (71, 136638), (73, 136656), (78, 136698), (79, 136701), (89, 136845), (92, 136875), (94, 136899), (96, 136938), (98, 136950), (99, 136956), (102, 137028), (104, 137052), (105, 137055), (110, 137073), (115, 137127),

Gene: Nimbo_93 Start: 53004, Stop: 54440, Start Num: 23

Candidate Starts for Nimbo_93:

(Start: 23 @53004 has 157 MA's), (25, 53010), (Start: 26 @53013 has 1 MA's), (45, 53355), (48, 53457), (54, 53592), (56, 53622), (58, 53640), (68, 53742), (69, 53760), (70, 53763), (71, 53814), (73, 53832), (75, 53844), (79, 53877), (89, 54009), (92, 54039), (94, 54063), (97, 54105), (99, 54120), (101, 54186), (105, 54225), (110, 54243), (116, 54318),

Gene: Nitzel_95 Start: 51587, Stop: 53041, Start Num: 18

Candidate Starts for Nitzel_95:

(16, 51578), (Start: 18 @51587 has 2 MA's), (Start: 23 @51605 has 157 MA's), (Start: 26 @51617 has 1 MA's), (45, 51956), (48, 52058), (56, 52223), (58, 52241), (64, 52298), (68, 52343), (69, 52361), (70, 52364), (71, 52415), (79, 52478), (89, 52610), (92, 52640), (94, 52664), (97, 52706), (99, 52721), (101, 52787), (103, 52802), (105, 52826), (110, 52844), (116, 52919),

Gene: Nivrat_101 Start: 55276, Stop: 56712, Start Num: 23

Candidate Starts for Nivrat_101:

(Start: 23 @55276 has 157 MA's), (25, 55285), (Start: 26 @55288 has 1 MA's), (45, 55627), (48, 55729), (54, 55864), (56, 55894), (58, 55912), (68, 56014), (69, 56032), (70, 56035), (71, 56086), (75, 56116), (79, 56149), (89, 56281), (92, 56311), (94, 56335), (97, 56377), (99, 56392), (103, 56473), (105, 56497), (110, 56515), (116, 56590), (120, 56653), (121, 56656),

Gene: NormanBulbieJr_99 Start: 55370, Stop: 56806, Start Num: 23

Candidate Starts for NormanBulbieJr_99:

(6, 55067), (Start: 8 @55196 has 35 MA's), (Start: 23 @55370 has 157 MA's), (Start: 26 @55382 has 1 MA's), (45, 55721), (48, 55823), (56, 55988), (58, 56006), (70, 56129), (71, 56180), (75, 56210), (79, 56243), (89, 56375), (92, 56405), (94, 56429), (97, 56471), (99, 56486), (101, 56552), (105, 56591), (110, 56609), (116, 56684),

Gene: Ogotogo_105 Start: 53609, Stop: 55048, Start Num: 23

Candidate Starts for Ogotogo_105:

(Start: 23 @53609 has 157 MA's), (25, 53618), (Start: 26 @53621 has 1 MA's), (45, 53963), (48, 54065), (54, 54200), (56, 54230), (58, 54248), (64, 54305), (68, 54350), (69, 54368), (70, 54371), (71, 54422), (75, 54452), (79, 54485), (89, 54617), (92, 54647), (94, 54671), (97, 54713), (99, 54728), (101, 54794), (103, 54809), (105, 54833), (110, 54851), (116, 54926),

Gene: OldBen_98 Start: 54396, Stop: 55832, Start Num: 23

Candidate Starts for OldBen_98:

(Start: 23 @54396 has 157 MA's), (25, 54402), (Start: 26 @54405 has 1 MA's), (45, 54747), (48, 54849), (54, 54984), (56, 55014), (58, 55032), (68, 55134), (69, 55152), (70, 55155), (71, 55206), (73, 55224), (75, 55236), (79, 55269), (89, 55401), (92, 55431), (94, 55455), (97, 55497), (99, 55512), (101, 55578), (105, 55617), (110, 55635), (116, 55710),

Gene: OlympiaSaint_105 Start: 55560, Stop: 56996, Start Num: 23

Candidate Starts for OlympiaSaint_105:

(5, 55200), (6, 55257), (Start: 8 @55386 has 35 MA's), (Start: 23 @55560 has 157 MA's), (Start: 26 @55572 has 1 MA's), (45, 55911), (48, 56013), (56, 56178), (70, 56319), (71, 56370), (75, 56400),

(79, 56433), (89, 56565), (92, 56595), (94, 56619), (97, 56661), (99, 56676), (103, 56757), (105, 56781), (110, 56799), (116, 56874), (120, 56937),

Gene: Ovechkin_103 Start: 54912, Stop: 56522, Start Num: 8

Candidate Starts for Ovechkin_103:

(5, 54726), (6, 54783), (Start: 8 @54912 has 35 MA's), (Start: 23 @55086 has 157 MA's), (Start: 26 @55098 has 1 MA's), (45, 55437), (48, 55539), (54, 55674), (56, 55704), (58, 55722), (64, 55779), (68, 55824), (69, 55842), (70, 55845), (71, 55896), (79, 55959), (89, 56091), (92, 56121), (94, 56145), (97, 56187), (99, 56202), (101, 56268), (103, 56283), (105, 56307), (110, 56325), (116, 56400),

Gene: OwlsT2W_98 Start: 53116, Stop: 54726, Start Num: 8

Candidate Starts for OwlsT2W_98:

(6, 52987), (Start: 8 @53116 has 35 MA's), (Start: 23 @53290 has 157 MA's), (Start: 26 @53302 has 1 MA's), (45, 53641), (48, 53743), (56, 53908), (64, 53983), (68, 54028), (69, 54046), (70, 54049), (71, 54100), (79, 54163), (89, 54295), (92, 54325), (94, 54349), (97, 54391), (99, 54406), (101, 54472), (105, 54511), (110, 54529), (116, 54604),

Gene: PHappiness_101 Start: 55225, Stop: 56661, Start Num: 23

Candidate Starts for PHappiness_101:

(Start: 23 @55225 has 157 MA's), (25, 55231), (Start: 26 @55234 has 1 MA's), (45, 55576), (48, 55678), (54, 55813), (56, 55843), (58, 55861), (68, 55963), (69, 55981), (70, 55984), (71, 56035), (73, 56053), (75, 56065), (79, 56098), (89, 56230), (92, 56260), (94, 56284), (97, 56326), (99, 56341), (101, 56407), (105, 56446), (110, 56464), (116, 56539),

Gene: PMC_100 Start: 53440, Stop: 54876, Start Num: 23

Candidate Starts for PMC_100:

(Start: 23 @53440 has 157 MA's), (25, 53449), (Start: 26 @53452 has 1 MA's), (45, 53791), (48, 53893), (54, 54028), (56, 54058), (58, 54076), (64, 54133), (68, 54178), (69, 54196), (70, 54199), (71, 54250), (79, 54313), (89, 54445), (92, 54475), (94, 54499), (97, 54541), (99, 54556), (101, 54622), (105, 54661), (110, 54679), (116, 54754),

Gene: Pacc40_98 Start: 55635, Stop: 57257, Start Num: 8

Candidate Starts for Pacc40_98:

(Start: 8 @55635 has 35 MA's), (Start: 23 @55818 has 157 MA's), (25, 55827), (Start: 26 @55830 has 1 MA's), (45, 56172), (48, 56274), (56, 56439), (58, 56457), (68, 56559), (69, 56577), (70, 56580), (71, 56631), (79, 56694), (89, 56826), (92, 56856), (94, 56880), (97, 56922), (99, 56937), (101, 57003), (105, 57042), (110, 57060), (116, 57135),

Gene: Phalconet_102 Start: 54439, Stop: 55875, Start Num: 23

Candidate Starts for Phalconet_102:

(6, 54136), (Start: 8 @54265 has 35 MA's), (Start: 23 @54439 has 157 MA's), (Start: 26 @54451 has 1 MA's), (45, 54790), (48, 54892), (50, 54913), (56, 55057), (64, 55132), (68, 55177), (70, 55198), (71, 55249), (79, 55312), (89, 55444), (92, 55474), (94, 55498), (97, 55540), (99, 55555), (103, 55636), (105, 55660), (110, 55678), (116, 55753), (120, 55816), (121, 55819),

Gene: Phanphagia_106 Start: 56194, Stop: 57630, Start Num: 23

Candidate Starts for Phanphagia_106:

(6, 55891), (Start: 8 @56020 has 35 MA's), (Start: 23 @56194 has 157 MA's), (Start: 26 @56206 has 1 MA's), (45, 56545), (48, 56647), (56, 56812), (70, 56953), (71, 57004), (75, 57034), (79, 57067), (89, 57199), (92, 57229), (94, 57253), (97, 57295), (99, 57310), (103, 57391), (105, 57415), (110, 57433), (116, 57508), (120, 57571), (121, 57574),

Gene: Phasih_97 Start: 53206, Stop: 54828, Start Num: 8

Candidate Starts for Phasih_97:

(Start: 8 @53206 has 35 MA's), (Start: 23 @53389 has 157 MA's), (25, 53398), (Start: 26 @53401 has 1 MA's), (45, 53743), (48, 53845), (54, 53980), (56, 54010), (58, 54028), (68, 54130), (69, 54148), (70, 54151), (71, 54202), (79, 54265), (89, 54397), (92, 54427), (94, 54451), (97, 54493), (99, 54508), (103, 54589), (105, 54613), (110, 54631), (116, 54706), (120, 54769), (121, 54772),

Gene: Phatniss_98 Start: 53597, Stop: 55207, Start Num: 8

Candidate Starts for Phatniss_98:

(6, 53468), (Start: 8 @53597 has 35 MA's), (Start: 23 @53771 has 157 MA's), (Start: 26 @53783 has 1 MA's), (45, 54122), (48, 54224), (56, 54389), (64, 54464), (68, 54509), (70, 54530), (71, 54581), (75, 54611), (79, 54644), (89, 54776), (92, 54806), (94, 54830), (97, 54872), (99, 54887), (101, 54953), (105, 54992), (110, 55010), (116, 55085),

Gene: PhesterPhotato_104 Start: 54413, Stop: 55849, Start Num: 23

Candidate Starts for PhesterPhotato_104:

(6, 54110), (Start: 8 @54239 has 35 MA's), (Start: 23 @54413 has 157 MA's), (Start: 26 @54425 has 1 MA's), (45, 54764), (48, 54866), (56, 55031), (64, 55106), (68, 55151), (70, 55172), (71, 55223), (75, 55253), (79, 55286), (89, 55418), (92, 55448), (94, 55472), (97, 55514), (99, 55529), (103, 55610), (105, 55634), (110, 55652), (116, 55727), (120, 55790), (121, 55793),

Gene: Philus_105 Start: 56501, Stop: 57937, Start Num: 23

Candidate Starts for Philus_105:

(6, 56198), (Start: 8 @56327 has 35 MA's), (Start: 23 @56501 has 157 MA's), (Start: 26 @56513 has 1 MA's), (45, 56852), (48, 56954), (56, 57119), (64, 57194), (68, 57239), (69, 57257), (70, 57260), (71, 57311), (79, 57374), (89, 57506), (92, 57536), (94, 57560), (97, 57602), (99, 57617), (103, 57698), (105, 57722), (110, 57740), (116, 57815), (120, 57878), (121, 57881),

Gene: Piper2020_96 Start: 55354, Stop: 56790, Start Num: 23

Candidate Starts for Piper2020_96:

(Start: 23 @55354 has 157 MA's), (45, 55705), (47, 55786), (48, 55807), (56, 55972), (67, 56089), (70, 56113), (71, 56164), (84, 56275), (89, 56359), (92, 56389), (94, 56413), (97, 56455), (99, 56470), (101, 56536), (103, 56551), (105, 56575), (110, 56593), (116, 56668), (120, 56731),

Gene: Pippy_100 Start: 53930, Stop: 55366, Start Num: 23

Candidate Starts for Pippy_100:

(Start: 23 @53930 has 157 MA's), (Start: 26 @53942 has 1 MA's), (45, 54281), (48, 54383), (50, 54404), (54, 54518), (56, 54548), (64, 54623), (68, 54668), (69, 54686), (70, 54689), (71, 54740), (75, 54770), (79, 54803), (89, 54935), (92, 54965), (94, 54989), (97, 55031), (99, 55046), (101, 55112), (105, 55151), (110, 55169), (116, 55244),

Gene: Plumbus_100 Start: 52121, Stop: 53560, Start Num: 23

Candidate Starts for Plumbus_100:

(Start: 23 @52121 has 157 MA's), (25, 52130), (Start: 26 @52133 has 1 MA's), (45, 52475), (48, 52577), (54, 52712), (56, 52742), (58, 52760), (64, 52817), (68, 52862), (69, 52880), (70, 52883), (71, 52934), (79, 52997), (89, 53129), (92, 53159), (94, 53183), (97, 53225), (99, 53240), (101, 53306), (105, 53345), (110, 53363), (116, 53438),

Gene: Poenanya_105 Start: 55933, Stop: 57369, Start Num: 23

Candidate Starts for Poenanya_105:

(Start: 23 @55933 has 157 MA's), (24, 55939), (Start: 26 @55942 has 1 MA's), (45, 56284), (48, 56386), (54, 56521), (56, 56551), (58, 56569), (64, 56626), (68, 56671), (69, 56689), (70, 56692), (71, 56743), (79, 56806), (89, 56938), (92, 56968), (94, 56992), (97, 57034), (99, 57049), (101, 57115), (103, 57130), (105, 57154), (110, 57172), (116, 57247), (120, 57310),

Gene: Polka14_105 Start: 55994, Stop: 57430, Start Num: 23

Candidate Starts for Polka14_105:

(Start: 23 @55994 has 157 MA's), (25, 56000), (Start: 26 @56003 has 1 MA's), (45, 56345), (48, 56447), (54, 56582), (56, 56612), (58, 56630), (68, 56732), (69, 56750), (70, 56753), (71, 56804), (73, 56822), (75, 56834), (79, 56867), (89, 56999), (92, 57029), (94, 57053), (97, 57095), (99, 57110), (101, 57176), (105, 57215), (110, 57233), (116, 57308),

Gene: Pollywog_103 Start: 56052, Stop: 57488, Start Num: 23

Candidate Starts for Pollywog_103:

(Start: 23 @56052 has 157 MA's), (25, 56058), (Start: 26 @56061 has 1 MA's), (45, 56403), (48, 56505), (54, 56640), (56, 56670), (58, 56688), (68, 56790), (69, 56808), (70, 56811), (71, 56862), (79, 56925), (92, 57087), (94, 57111), (97, 57153), (99, 57168), (101, 57234), (105, 57273), (110, 57291), (116, 57366),

Gene: PopTart_91 Start: 51669, Stop: 53279, Start Num: 8

Candidate Starts for PopTart_91:

(6, 51540), (Start: 8 @51669 has 35 MA's), (Start: 23 @51843 has 157 MA's), (Start: 26 @51855 has 1 MA's), (45, 52194), (48, 52296), (54, 52431), (56, 52461), (58, 52479), (68, 52581), (69, 52599), (70, 52602), (71, 52653), (79, 52716), (84, 52764), (89, 52848), (92, 52878), (94, 52902), (97, 52944), (99, 52959), (101, 53025), (103, 53040), (105, 53064), (110, 53082), (116, 53157),

Gene: Priscilla_102 Start: 55468, Stop: 56904, Start Num: 23

Candidate Starts for Priscilla_102:

(6, 55165), (Start: 8 @55294 has 35 MA's), (Start: 23 @55468 has 157 MA's), (Start: 26 @55480 has 1 MA's), (45, 55819), (48, 55921), (56, 56086), (58, 56104), (70, 56227), (71, 56278), (75, 56308), (79, 56341), (89, 56473), (92, 56503), (94, 56527), (97, 56569), (99, 56584), (101, 56650), (105, 56689), (110, 56707), (116, 56782),

Gene: QueenHazel_70 Start: 45079, Stop: 46515, Start Num: 23

Candidate Starts for QueenHazel_70:

(Start: 23 @45079 has 157 MA's), (25, 45088), (Start: 29 @45112 has 1 MA's), (45, 45430), (48, 45532), (50, 45553), (56, 45697), (60, 45727), (64, 45772), (68, 45817), (70, 45838), (71, 45889), (81, 45970), (87, 46075), (89, 46084), (92, 46114), (94, 46138), (99, 46195), (105, 46300), (110, 46318), (116, 46393),

Gene: QuickMath_102 Start: 54314, Stop: 55753, Start Num: 23

Candidate Starts for QuickMath_102:

(Start: 23 @54314 has 157 MA's), (25, 54323), (Start: 26 @54326 has 1 MA's), (45, 54668), (48, 54770), (56, 54935), (64, 55010), (68, 55055), (69, 55073), (70, 55076), (71, 55127), (75, 55157), (79, 55190), (89, 55322), (92, 55352), (94, 55376), (97, 55418), (99, 55433), (103, 55514), (105, 55538), (110, 55556), (116, 55631), (120, 55694), (121, 55697),

Gene: Quico_110 Start: 56322, Stop: 57758, Start Num: 23

Candidate Starts for Quico_110:

(5, 55962), (6, 56019), (Start: 8 @56148 has 35 MA's), (Start: 23 @56322 has 157 MA's), (Start: 26 @56334 has 1 MA's), (45, 56673), (48, 56775), (54, 56910), (56, 56940), (58, 56958), (68, 57060), (69, 57078), (70, 57081), (71, 57132), (75, 57162), (79, 57195), (89, 57327), (92, 57357), (94, 57381), (97, 57423), (99, 57438), (103, 57519), (105, 57543), (110, 57561), (116, 57636), (120, 57699),

Gene: Radiance_99 Start: 54337, Stop: 55773, Start Num: 23

Candidate Starts for Radiance_99:

(Start: 23 @54337 has 157 MA's), (25, 54343), (Start: 26 @54346 has 1 MA's), (45, 54688), (48, 54790), (54, 54925), (56, 54955), (64, 55030), (68, 55075), (70, 55096), (71, 55147), (73, 55165), (75, 55177), (79, 55210), (89, 55342), (92, 55372), (94, 55396), (97, 55438), (99, 55453), (101, 55519), (105, 55558), (110, 55576), (116, 55651),

Gene: Ramsey_106 Start: 56233, Stop: 57669, Start Num: 23

Candidate Starts for Ramsey_106:

(Start: 23 @56233 has 157 MA's), (25, 56242), (Start: 26 @56245 has 1 MA's), (45, 56584), (48, 56686), (54, 56821), (56, 56851), (58, 56869), (64, 56926), (68, 56971), (69, 56989), (70, 56992), (71, 57043), (79, 57106), (89, 57238), (92, 57268), (94, 57292), (97, 57334), (99, 57349), (101, 57415), (103, 57430), (105, 57454), (110, 57472), (116, 57547), (120, 57610),

Gene: RedBird_102 Start: 55972, Stop: 57408, Start Num: 23

Candidate Starts for RedBird_102:

(Start: 23 @55972 has 157 MA's), (25, 55978), (Start: 26 @55981 has 1 MA's), (45, 56323), (48, 56425), (54, 56560), (56, 56590), (58, 56608), (68, 56710), (69, 56728), (70, 56731), (71, 56782), (73, 56800), (75, 56812), (79, 56845), (89, 56977), (92, 57007), (94, 57031), (97, 57073), (99, 57088), (101, 57154), (105, 57193), (110, 57211), (116, 57286),

Gene: Renaud18_110 Start: 55509, Stop: 56948, Start Num: 23

Candidate Starts for Renaud18_110:

(17, 55485), (19, 55494), (Start: 23 @55509 has 157 MA's), (31, 55578), (33, 55650), (41, 55764), (44, 55842), (50, 55989), (56, 56133), (58, 56151), (74, 56343), (75, 56352), (76, 56358), (77, 56379), (78, 56382), (80, 56400), (83, 56433), (85, 56451), (86, 56457), (89, 56517), (96, 56613), (97, 56616), (99, 56631), (104, 56733), (105, 56736), (107, 56745), (111, 56775), (115, 56817), (116, 56826), (118, 56841), (122, 56898),

Gene: Rialto_106 Start: 55588, Stop: 57027, Start Num: 23

Candidate Starts for Rialto_106:

(Start: 23 @55588 has 157 MA's), (25, 55597), (Start: 26 @55600 has 1 MA's), (45, 55942), (48, 56044), (56, 56209), (68, 56329), (69, 56347), (70, 56350), (71, 56401), (75, 56431), (79, 56464), (89, 56596), (92, 56626), (94, 56650), (97, 56692), (99, 56707), (105, 56812), (110, 56830), (116, 56905),

Gene: Rita_101 Start: 56038, Stop: 57474, Start Num: 23

Candidate Starts for Rita_101:

(6, 55735), (Start: 8 @55864 has 35 MA's), (Start: 23 @56038 has 157 MA's), (Start: 26 @56050 has 1 MA's), (45, 56389), (48, 56491), (56, 56656), (70, 56797), (71, 56848), (75, 56878), (79, 56911), (89, 57043), (92, 57073), (94, 57097), (97, 57139), (99, 57154), (103, 57235), (105, 57259), (110, 57277), (116, 57352), (120, 57415),

Gene: RitaG_100 Start: 55027, Stop: 56463, Start Num: 23

Candidate Starts for RitaG_100:

(Start: 23 @55027 has 157 MA's), (25, 55033), (Start: 26 @55036 has 1 MA's), (45, 55378), (48, 55480), (54, 55615), (56, 55645), (58, 55663), (68, 55765), (69, 55783), (70, 55786), (71, 55837), (73, 55855), (75, 55867), (79, 55900), (89, 56032), (92, 56062), (94, 56086), (97, 56128), (99, 56143), (101, 56209), (105, 56248), (110, 56266), (116, 56341),

Gene: Rockne_104 Start: 53452, Stop: 54888, Start Num: 23

Candidate Starts for Rockne_104:

(Start: 23 @53452 has 157 MA's), (25, 53461), (Start: 26 @53464 has 1 MA's), (45, 53803), (48, 53905), (54, 54040), (56, 54070), (58, 54088), (64, 54145), (68, 54190), (69, 54208), (70, 54211), (71, 54262), (79, 54325), (89, 54457), (92, 54487), (94, 54511), (97, 54553), (99, 54568), (101, 54634), (105, 54673), (110, 54691), (116, 54766),

Gene: RockyHorror_104 Start: 53953, Stop: 55575, Start Num: 8

Candidate Starts for RockyHorror_104:

(Start: 8 @53953 has 35 MA's), (Start: 23 @54136 has 157 MA's), (25, 54145), (Start: 26 @54148 has 1 MA's), (45, 54490), (48, 54592), (54, 54727), (56, 54757), (58, 54775), (68, 54877), (69, 54895), (70, 54898), (71, 54949), (73, 54967), (79, 55012), (92, 55174), (94, 55198), (97, 55240), (99, 55255), (101, 55321), (105, 55360), (110, 55378), (116, 55453),

Gene: Royals2015_105 Start: 53573, Stop: 55009, Start Num: 23

Candidate Starts for Royals2015_105:

(6, 53270), (Start: 8 @53399 has 35 MA's), (Start: 23 @53573 has 157 MA's), (Start: 26 @53585 has 1 MA's), (45, 53924), (48, 54026), (56, 54191), (64, 54266), (68, 54311), (69, 54329), (70, 54332), (71, 54383), (75, 54413), (79, 54446), (89, 54578), (92, 54608), (94, 54632), (97, 54674), (99, 54689), (103, 54770), (105, 54794), (110, 54812), (116, 54887), (120, 54950), (121, 54953),

Gene: Ruby_97 Start: 54819, Stop: 56429, Start Num: 8

Candidate Starts for Ruby_97:

(6, 54690), (Start: 8 @54819 has 35 MA's), (Start: 23 @54993 has 157 MA's), (Start: 26 @55005 has 1 MA's), (45, 55344), (48, 55446), (54, 55581), (56, 55611), (58, 55629), (68, 55731), (69, 55749), (70, 55752), (71, 55803), (79, 55866), (89, 55998), (92, 56028), (94, 56052), (97, 56094), (99, 56109), (101, 56175), (105, 56214), (110, 56232), (116, 56307),

Gene: SG4_102 Start: 55807, Stop: 57243, Start Num: 23

Candidate Starts for SG4_102:

(6, 55504), (Start: 8 @55633 has 35 MA's), (Start: 23 @55807 has 157 MA's), (Start: 26 @55819 has 1 MA's), (45, 56158), (48, 56260), (56, 56425), (64, 56500), (68, 56545), (69, 56563), (70, 56566), (71, 56617), (75, 56647), (79, 56680), (89, 56812), (92, 56842), (94, 56866), (97, 56908), (99, 56923), (103, 57004), (105, 57028), (110, 57046), (116, 57121), (120, 57184), (121, 57187),

Gene: Saal_99 Start: 55042, Stop: 56478, Start Num: 23

Candidate Starts for Saal_99:

(Start: 23 @55042 has 157 MA's), (24, 55048), (Start: 26 @55051 has 1 MA's), (45, 55393), (48, 55495), (54, 55630), (56, 55660), (58, 55678), (68, 55780), (69, 55798), (70, 55801), (71, 55852), (73, 55870), (75, 55882), (79, 55915), (89, 56047), (92, 56077), (94, 56101), (97, 56143), (99, 56158), (103, 56239), (105, 56263), (110, 56281), (116, 56356), (120, 56419),

Gene: Sabbb_104 Start: 52998, Stop: 54434, Start Num: 23

Candidate Starts for Sabbb_104:

(6, 52695), (Start: 8 @52824 has 35 MA's), (Start: 23 @52998 has 157 MA's), (Start: 26 @53010 has 1 MA's), (45, 53349), (48, 53451), (50, 53472), (56, 53616), (58, 53634), (64, 53691), (68, 53736), (69, 53754), (70, 53757), (71, 53808), (75, 53838), (79, 53871), (89, 54003), (92, 54033), (94, 54057), (97, 54099), (99, 54114), (101, 54180), (105, 54219), (110, 54237), (116, 54312),

Gene: Sandalphon_100 Start: 55851, Stop: 57461, Start Num: 8

Candidate Starts for Sandalphon_100:

(5, 55665), (6, 55722), (Start: 8 @55851 has 35 MA's), (Start: 23 @56025 has 157 MA's), (Start: 26 @56037 has 1 MA's), (45, 56376), (48, 56478), (56, 56643), (68, 56763), (69, 56781), (70, 56784), (71, 56835), (79, 56898), (92, 57060), (94, 57084), (97, 57126), (99, 57141), (101, 57207), (105, 57246), (110, 57264), (116, 57339),

Gene: Sarma624_103 Start: 51967, Stop: 53403, Start Num: 23

Candidate Starts for Sarma624_103:

(6, 51664), (Start: 8 @51793 has 35 MA's), (Start: 23 @51967 has 157 MA's), (Start: 26 @51979 has 1 MA's), (45, 52318), (48, 52420), (56, 52585), (70, 52726), (71, 52777), (75, 52807), (79, 52840), (89, 52972), (92, 53002), (94, 53026), (97, 53068), (99, 53083), (103, 53164), (105, 53188), (110, 53206), (116, 53281), (120, 53344),

Gene: Sassafras_103 Start: 54289, Stop: 55725, Start Num: 23

Candidate Starts for Sassafras_103:

(Start: 23 @54289 has 157 MA's), (25, 54295), (Start: 26 @54298 has 1 MA's), (45, 54640), (48, 54742), (54, 54877), (56, 54907), (58, 54925), (68, 55027), (69, 55045), (70, 55048), (71, 55099), (73, 55117), (75, 55129), (79, 55162), (89, 55294), (92, 55324), (94, 55348), (97, 55390), (99, 55405), (101, 55471), (105, 55510), (110, 55528), (116, 55603),

Gene: SassyB_91 Start: 51669, Stop: 53279, Start Num: 8

Candidate Starts for SassyB_91:

(6, 51540), (Start: 8 @51669 has 35 MA's), (Start: 23 @51843 has 157 MA's), (Start: 26 @51855 has 1 MA's), (45, 52194), (48, 52296), (54, 52431), (56, 52461), (58, 52479), (68, 52581), (69, 52599), (70, 52602), (71, 52653), (79, 52716), (84, 52764), (89, 52848), (92, 52878), (94, 52902), (97, 52944), (99, 52959), (101, 53025), (103, 53040), (105, 53064), (110, 53082), (116, 53157),

Gene: Sbash_87 Start: 53343, Stop: 54779, Start Num: 23

Candidate Starts for Sbash_87:

(13, 53277), (Start: 23 @53343 has 157 MA's), (25, 53352), (45, 53694), (48, 53796), (56, 53961), (64, 54036), (68, 54081), (69, 54099), (70, 54102), (71, 54153), (79, 54216), (84, 54264), (87, 54339), (89, 54348), (92, 54378), (94, 54402), (99, 54459), (100, 54480), (105, 54564), (110, 54582), (114, 54645), (116, 54657), (122, 54729),

Gene: ScoobyDoobyDoo_232 Start: 132607, Stop: 134067, Start Num: 27

Candidate Starts for ScoobyDoobyDoo_232:

(Start: 27 @132607 has 1 MA's), (31, 132649), (34, 132730), (36, 132736), (40, 132847), (41, 132853), (45, 132955), (48, 133066), (49, 133069), (50, 133087), (51, 133099), (52, 133108), (53, 133195), (55, 133204), (61, 133282), (64, 133309), (65, 133312), (66, 133360), (71, 133438), (82, 133543), (89, 133654), (92, 133684), (93, 133687), (94, 133708), (96, 133747), (98, 133759), (99, 133765), (102, 133837), (103, 133840), (110, 133882), (113, 133930), (115, 133939), (122, 134017),

Gene: Scottish_101 Start: 53866, Stop: 55302, Start Num: 23

Candidate Starts for Scottish_101:

(Start: 23 @53866 has 157 MA's), (25, 53872), (Start: 26 @53875 has 1 MA's), (45, 54217), (48, 54319), (54, 54454), (56, 54484), (58, 54502), (68, 54604), (69, 54622), (70, 54625), (71, 54676), (73, 54694), (75, 54706), (79, 54739), (89, 54871), (92, 54901), (94, 54925), (97, 54967), (99, 54982), (101, 55048), (105, 55087), (110, 55105), (116, 55180),

Gene: Seagreen_102 Start: 54945, Stop: 56381, Start Num: 23

Candidate Starts for Seagreen_102:

(6, 54642), (Start: 8 @54771 has 35 MA's), (Start: 23 @54945 has 157 MA's), (Start: 26 @54957 has 1 MA's), (45, 55296), (48, 55398), (56, 55563), (64, 55638), (68, 55683), (70, 55704), (71, 55755), (75, 55785), (79, 55818), (89, 55950), (92, 55980), (94, 56004), (97, 56046), (99, 56061), (103, 56142), (105, 56166), (110, 56184), (116, 56259), (120, 56322), (121, 56325),

Gene: Shauna1_103 Start: 55810, Stop: 57246, Start Num: 23

Candidate Starts for Shauna1_103:

(6, 55507), (Start: 8 @55636 has 35 MA's), (Start: 23 @55810 has 157 MA's), (Start: 26 @55822 has 1 MA's), (45, 56161), (48, 56263), (56, 56428), (70, 56569), (71, 56620), (75, 56650), (79, 56683), (89, 56815), (92, 56845), (94, 56869), (97, 56911), (99, 56926), (103, 57007), (105, 57031), (110, 57049),

(116, 57124), (120, 57187), (121, 57190),

Gene: ShiLan_104 Start: 57059, Stop: 58495, Start Num: 23

Candidate Starts for ShiLan_104:

(Start: 23 @57059 has 157 MA's), (25, 57065), (Start: 26 @57068 has 1 MA's), (45, 57410), (48, 57512), (54, 57647), (56, 57677), (58, 57695), (68, 57797), (69, 57815), (70, 57818), (71, 57869), (73, 57887), (75, 57899), (79, 57932), (89, 58064), (92, 58094), (94, 58118), (97, 58160), (99, 58175), (105, 58280), (110, 58298), (116, 58373),

Gene: ShowerHandel_99 Start: 54603, Stop: 56039, Start Num: 23

Candidate Starts for ShowerHandel_99:

(Start: 23 @54603 has 157 MA's), (Start: 26 @54615 has 1 MA's), (45, 54954), (48, 55056), (50, 55077), (54, 55191), (56, 55221), (58, 55239), (68, 55341), (69, 55359), (70, 55362), (71, 55413), (79, 55476), (89, 55608), (92, 55638), (94, 55662), (97, 55704), (99, 55719), (101, 55785), (105, 55824), (110, 55842), (116, 55917),

Gene: ShroomBoi_99 Start: 54651, Stop: 56087, Start Num: 23

Candidate Starts for ShroomBoi_99:

(Start: 23 @54651 has 157 MA's), (Start: 26 @54663 has 1 MA's), (45, 55002), (48, 55104), (54, 55239), (56, 55269), (58, 55287), (64, 55344), (68, 55389), (69, 55407), (70, 55410), (71, 55461), (79, 55524), (89, 55656), (92, 55686), (94, 55710), (97, 55752), (99, 55767), (103, 55848), (105, 55872), (110, 55890), (116, 55965), (120, 56028), (121, 56031),

Gene: SiSi_96 Start: 53372, Stop: 54982, Start Num: 8

Candidate Starts for SiSi_96:

(Start: 8 @53372 has 35 MA's), (Start: 23 @53546 has 157 MA's), (Start: 26 @53558 has 1 MA's), (45, 53897), (48, 53999), (54, 54134), (56, 54164), (58, 54182), (68, 54284), (69, 54302), (70, 54305), (71, 54356), (79, 54419), (89, 54551), (92, 54581), (94, 54605), (97, 54647), (99, 54662), (103, 54743), (105, 54767), (110, 54785), (116, 54860),

Gene: SimranZ1_97 Start: 52735, Stop: 54345, Start Num: 8

Candidate Starts for SimranZ1_97:

(Start: 8 @52735 has 35 MA's), (Start: 23 @52909 has 157 MA's), (Start: 26 @52921 has 1 MA's), (45, 53260), (48, 53362), (54, 53497), (56, 53527), (58, 53545), (70, 53668), (71, 53719), (79, 53782), (89, 53914), (92, 53944), (94, 53968), (97, 54010), (99, 54025), (101, 54091), (105, 54130), (110, 54148), (116, 54223),

Gene: Sparkdehlily_108 Start: 53537, Stop: 54976, Start Num: 23

Candidate Starts for Sparkdehlily_108:

(Start: 23 @53537 has 157 MA's), (25, 53546), (Start: 26 @53549 has 1 MA's), (45, 53891), (48, 53993), (54, 54128), (56, 54158), (58, 54176), (68, 54278), (69, 54296), (70, 54299), (71, 54350), (75, 54380), (79, 54413), (89, 54545), (92, 54575), (94, 54599), (97, 54641), (99, 54656), (105, 54761), (110, 54779), (116, 54854),

Gene: Sparky_88 Start: 59585, Stop: 61039, Start Num: 22

Candidate Starts for Sparky_88:

(15, 59552), (20, 59576), (Start: 22 @59585 has 1 MA's), (37, 59774), (41, 59849), (42, 59861), (46, 60002), (62, 60272), (71, 60407), (79, 60470), (89, 60605), (90, 60611), (95, 60680), (99, 60719), (101, 60788), (104, 60824), (105, 60827), (112, 60872), (116, 60917), (117, 60923), (122, 60989),

Gene: Spartacus_108 Start: 57651, Stop: 59090, Start Num: 23

Candidate Starts for Spartacus_108:

(Start: 23 @57651 has 157 MA's), (25, 57660), (Start: 26 @57663 has 1 MA's), (45, 58005), (48, 58107), (54, 58242), (56, 58272), (58, 58290), (68, 58392), (69, 58410), (70, 58413), (71, 58464), (75, 58494), (79, 58527), (89, 58659), (92, 58689), (94, 58713), (97, 58755), (99, 58770), (101, 58836), (105, 58875), (110, 58893), (116, 58968),

Gene: Spikelee_101 Start: 56031, Stop: 57470, Start Num: 23

Candidate Starts for Spikelee_101:

(Start: 23 @56031 has 157 MA's), (25, 56040), (Start: 26 @56043 has 1 MA's), (45, 56385), (48, 56487), (56, 56652), (64, 56727), (68, 56772), (69, 56790), (70, 56793), (71, 56844), (75, 56874), (79, 56907), (92, 57069), (94, 57093), (97, 57135), (99, 57150), (101, 57216), (105, 57255), (110, 57273), (116, 57348),

Gene: Spoonbill_101 Start: 52972, Stop: 54408, Start Num: 23

Candidate Starts for Spoonbill_101:

(Start: 23 @52972 has 157 MA's), (25, 52981), (Start: 26 @52984 has 1 MA's), (45, 53323), (48, 53425), (54, 53560), (56, 53590), (58, 53608), (68, 53710), (69, 53728), (70, 53731), (71, 53782), (73, 53800), (75, 53812), (79, 53845), (89, 53977), (92, 54007), (94, 54031), (97, 54073), (99, 54088), (101, 54154), (105, 54193), (110, 54211), (116, 54286),

Gene: Squirty_100 Start: 57940, Stop: 59376, Start Num: 23

Candidate Starts for Squirty_100:

(Start: 23 @57940 has 157 MA's), (25, 57949), (Start: 26 @57952 has 1 MA's), (45, 58291), (48, 58393), (54, 58528), (56, 58558), (58, 58576), (64, 58633), (68, 58678), (69, 58696), (70, 58699), (71, 58750), (79, 58813), (89, 58945), (92, 58975), (94, 58999), (97, 59041), (99, 59056), (103, 59137), (105, 59161), (110, 59179), (116, 59254), (120, 59317), (121, 59320),

Gene: StAnnes_106 Start: 56148, Stop: 57584, Start Num: 23

Candidate Starts for StAnnes_106:

(Start: 23 @56148 has 157 MA's), (Start: 26 @56160 has 1 MA's), (45, 56499), (47, 56580), (48, 56601), (50, 56622), (56, 56766), (64, 56841), (68, 56886), (70, 56907), (71, 56958), (75, 56988), (79, 57021), (89, 57153), (92, 57183), (94, 57207), (97, 57249), (99, 57264), (103, 57345), (105, 57369), (110, 57387), (116, 57462), (120, 57525), (121, 57528),

Gene: Stap_96 Start: 51574, Stop: 53010, Start Num: 23

Candidate Starts for Stap_96:

(6, 51271), (Start: 8 @51400 has 35 MA's), (Start: 23 @51574 has 157 MA's), (Start: 26 @51586 has 1 MA's), (45, 51925), (48, 52027), (56, 52192), (64, 52267), (68, 52312), (69, 52330), (70, 52333), (71, 52384), (79, 52447), (92, 52609), (94, 52633), (97, 52675), (99, 52690), (103, 52771), (105, 52795), (110, 52813), (116, 52888), (120, 52951), (121, 52954),

Gene: Starcevich_103 Start: 55701, Stop: 57140, Start Num: 23

Candidate Starts for Starcevich_103:

(Start: 23 @55701 has 157 MA's), (25, 55710), (Start: 26 @55713 has 1 MA's), (45, 56055), (48, 56157), (56, 56322), (68, 56442), (69, 56460), (70, 56463), (71, 56514), (75, 56544), (79, 56577), (89, 56709), (91, 56718), (92, 56739), (94, 56763), (97, 56805), (99, 56820), (101, 56886), (105, 56925), (110, 56943), (116, 57018),

Gene: Strokeseat_99 Start: 52733, Stop: 54172, Start Num: 23

Candidate Starts for Strokeseat_99:

(6, 52421), (Start: 8 @52550 has 35 MA's), (Start: 23 @52733 has 157 MA's), (25, 52742), (Start: 26 @52745 has 1 MA's), (45, 53087), (48, 53189), (54, 53324), (56, 53354), (58, 53372), (68, 53474), (69, 53492), (70, 53495), (71, 53546), (79, 53609), (89, 53741), (92, 53771), (94, 53795), (97, 53837), (99, 53852), (101, 53918), (103, 53933), (105, 53957), (110, 53975), (116, 54050), (120, 54113),

Gene: SuperGrey_100 Start: 56436, Stop: 58046, Start Num: 8

Candidate Starts for SuperGrey_100:

(6, 56307), (Start: 8 @56436 has 35 MA's), (Start: 23 @56610 has 157 MA's), (Start: 26 @56622 has 1 MA's), (45, 56961), (48, 57063), (56, 57228), (70, 57369), (71, 57420), (75, 57450), (79, 57483), (89, 57615), (92, 57645), (94, 57669), (97, 57711), (99, 57726), (103, 57807), (105, 57831), (110, 57849), (116, 57924), (120, 57987), (121, 57990),

Gene: SwagPiggett_103 Start: 56168, Stop: 57604, Start Num: 23

Candidate Starts for SwagPiggett_103:

(6, 55865), (Start: 8 @55994 has 35 MA's), (Start: 23 @56168 has 157 MA's), (Start: 26 @56180 has 1 MA's), (45, 56519), (48, 56621), (56, 56786), (58, 56804), (70, 56927), (71, 56978), (75, 57008), (79, 57041), (89, 57173), (92, 57203), (94, 57227), (97, 57269), (99, 57284), (101, 57350), (105, 57389), (110, 57407), (116, 57482),

Gene: TChen_98 Start: 54706, Stop: 56139, Start Num: 23

Candidate Starts for TChen_98:

(Start: 23 @54706 has 157 MA's), (25, 54715), (Start: 29 @54739 has 1 MA's), (39, 54943), (45, 55051), (47, 55135), (48, 55156), (54, 55291), (56, 55321), (58, 55339), (71, 55513), (72, 55525), (79, 55576), (85, 55636), (87, 55699), (89, 55708), (92, 55738), (94, 55762), (99, 55819), (105, 55924), (110, 55942), (116, 56017), (119, 56062),

Gene: TDanisky_109 Start: 53537, Stop: 54976, Start Num: 23

Candidate Starts for TDanisky_109:

(Start: 23 @53537 has 157 MA's), (25, 53546), (Start: 26 @53549 has 1 MA's), (45, 53891), (48, 53993), (54, 54128), (56, 54158), (58, 54176), (68, 54278), (69, 54296), (70, 54299), (71, 54350), (75, 54380), (79, 54413), (89, 54545), (92, 54575), (94, 54599), (97, 54641), (99, 54656), (105, 54761), (110, 54779), (116, 54854),

Gene: Taj_107 Start: 55815, Stop: 57251, Start Num: 23

Candidate Starts for Taj_107:

(Start: 23 @55815 has 157 MA's), (Start: 26 @55827 has 1 MA's), (45, 56166), (48, 56268), (56, 56433), (64, 56508), (68, 56553), (70, 56574), (71, 56625), (81, 56706), (87, 56811), (89, 56820), (92, 56850), (94, 56874), (99, 56931), (105, 57036), (110, 57054), (116, 57129),

Gene: TootsiePop_91 Start: 55106, Stop: 56542, Start Num: 23

Candidate Starts for TootsiePop_91:

(Start: 23 @55106 has 157 MA's), (45, 55457), (47, 55538), (48, 55559), (56, 55724), (67, 55841), (70, 55865), (71, 55916), (84, 56027), (89, 56111), (92, 56141), (94, 56165), (97, 56207), (99, 56222), (101, 56288), (103, 56303), (105, 56327), (110, 56345), (116, 56420), (120, 56483),

Gene: Tootsieroll_95 Start: 55249, Stop: 56685, Start Num: 23

Candidate Starts for Tootsieroll_95:

(Start: 23 @55249 has 157 MA's), (Start: 26 @55261 has 1 MA's), (45, 55600), (48, 55702), (56, 55867), (64, 55942), (68, 55987), (69, 56005), (70, 56008), (71, 56059), (75, 56089), (79, 56122), (89, 56254), (92, 56284), (94, 56308), (97, 56350), (99, 56365), (101, 56431), (103, 56446), (105, 56470), (110, 56488), (116, 56563), (120, 56626),

Gene: Totinger_104 Start: 55101, Stop: 56540, Start Num: 23

Candidate Starts for Totinger_104:

(Start: 23 @55101 has 157 MA's), (25, 55110), (Start: 26 @55113 has 1 MA's), (45, 55455), (48, 55557), (56, 55722), (68, 55842), (69, 55860), (70, 55863), (71, 55914), (75, 55944), (79, 55977), (89, 56109), (92, 56139), (94, 56163), (97, 56205), (99, 56220), (105, 56325), (110, 56343), (116, 56418),

Gene: UncleRicky_100 Start: 53142, Stop: 54764, Start Num: 8

Candidate Starts for UncleRicky_100:

(Start: 8 @53142 has 35 MA's), (Start: 23 @53325 has 157 MA's), (25, 53334), (Start: 26 @53337 has 1 MA's), (45, 53679), (48, 53781), (54, 53916), (56, 53946), (58, 53964), (68, 54066), (69, 54084), (70, 54087), (71, 54138), (73, 54156), (79, 54201), (92, 54363), (94, 54387), (97, 54429), (99, 54444), (101, 54510), (105, 54549), (110, 54567), (116, 54642),

Gene: VRedHorse_102 Start: 52066, Stop: 53502, Start Num: 23

Candidate Starts for VRedHorse_102:

(6, 51763), (Start: 8 @51892 has 35 MA's), (Start: 23 @52066 has 157 MA's), (Start: 26 @52078 has 1 MA's), (45, 52417), (48, 52519), (54, 52654), (56, 52684), (58, 52702), (64, 52759), (68, 52804), (69, 52822), (70, 52825), (71, 52876), (79, 52939), (89, 53071), (92, 53101), (94, 53125), (97, 53167), (99, 53182), (101, 53248), (103, 53263), (105, 53287), (110, 53305), (116, 53380), (120, 53443),

Gene: Velveteen_98 Start: 51967, Stop: 53403, Start Num: 23

Candidate Starts for Velveteen_98:

(6, 51664), (Start: 8 @51793 has 35 MA's), (Start: 23 @51967 has 157 MA's), (Start: 26 @51979 has 1 MA's), (45, 52318), (48, 52420), (56, 52585), (70, 52726), (71, 52777), (75, 52807), (79, 52840), (89, 52972), (92, 53002), (94, 53026), (97, 53068), (99, 53083), (103, 53164), (105, 53188), (110, 53206), (116, 53281), (120, 53344),

Gene: Veteran_91 Start: 53240, Stop: 54850, Start Num: 8

Candidate Starts for Veteran_91:

(Start: 8 @53240 has 35 MA's), (Start: 23 @53414 has 157 MA's), (Start: 26 @53426 has 1 MA's), (45, 53765), (48, 53867), (54, 54002), (56, 54032), (58, 54050), (68, 54152), (69, 54170), (70, 54173), (71, 54224), (79, 54287), (89, 54419), (92, 54449), (94, 54473), (97, 54515), (99, 54530), (103, 54611), (105, 54635), (110, 54653), (116, 54728),

Gene: Wachhund_97 Start: 51088, Stop: 52698, Start Num: 8

Candidate Starts for Wachhund_97:

(Start: 8 @51088 has 35 MA's), (Start: 23 @51262 has 157 MA's), (Start: 26 @51274 has 1 MA's), (45, 51613), (48, 51715), (54, 51850), (56, 51880), (58, 51898), (64, 51955), (68, 52000), (69, 52018), (70, 52021), (71, 52072), (79, 52135), (89, 52267), (91, 52276), (92, 52297), (94, 52321), (97, 52363), (99, 52378), (101, 52444), (103, 52459), (105, 52483), (110, 52501), (116, 52576),

Gene: Wee_104 Start: 55891, Stop: 57327, Start Num: 23

Candidate Starts for Wee_104:

(Start: 23 @55891 has 157 MA's), (Start: 26 @55903 has 1 MA's), (45, 56242), (48, 56344), (56, 56509), (64, 56584), (68, 56629), (70, 56650), (71, 56701), (81, 56782), (87, 56887), (89, 56896), (92, 56926), (94, 56950), (99, 57007), (105, 57112), (110, 57130), (116, 57205),

Gene: Whatsapiecost_95 Start: 49617, Stop: 51053, Start Num: 23

Candidate Starts for Whatsapiecost_95:

(6, 49314), (Start: 8 @49443 has 35 MA's), (Start: 23 @49617 has 157 MA's), (Start: 26 @49629 has 1 MA's), (45, 49968), (48, 50070), (56, 50235), (64, 50310), (68, 50355), (69, 50373), (70, 50376), (71, 50427), (75, 50457), (79, 50490), (89, 50622), (92, 50652), (94, 50676), (97, 50718), (99, 50733), (103, 50814), (105, 50838), (110, 50856), (116, 50931), (120, 50994), (121, 50997),

Gene: Whouxphf_105 Start: 56186, Stop: 57796, Start Num: 8

Candidate Starts for Whouxphf_105:

(5, 56000), (6, 56057), (Start: 8 @56186 has 35 MA's), (Start: 23 @56360 has 157 MA's), (Start: 26 @56372 has 1 MA's), (45, 56711), (48, 56813), (50, 56834), (56, 56978), (64, 57053), (68, 57098),

(69, 57116), (70, 57119), (71, 57170), (75, 57200), (79, 57233), (89, 57365), (92, 57395), (94, 57419), (97, 57461), (99, 57476), (103, 57557), (105, 57581), (110, 57599), (116, 57674),

Gene: XFactor_92 Start: 52408, Stop: 53844, Start Num: 23

Candidate Starts for XFactor_92:

(6, 52105), (Start: 8 @52234 has 35 MA's), (Start: 23 @52408 has 157 MA's), (Start: 26 @52420 has 1 MA's), (45, 52759), (48, 52861), (56, 53026), (64, 53101), (68, 53146), (70, 53167), (71, 53218), (79, 53281), (89, 53413), (92, 53443), (94, 53467), (97, 53509), (99, 53524), (103, 53605), (105, 53629), (110, 53647), (116, 53722), (120, 53785), (121, 53788),

Gene: Xula_71 Start: 45566, Stop: 47002, Start Num: 23

Candidate Starts for Xula_71:

(Start: 23 @45566 has 157 MA's), (25, 45575), (Start: 29 @45599 has 1 MA's), (45, 45917), (48, 46019), (50, 46040), (56, 46184), (60, 46214), (64, 46259), (68, 46304), (70, 46325), (71, 46376), (81, 46457), (87, 46562), (89, 46571), (92, 46601), (94, 46625), (99, 46682), (105, 46787), (110, 46805), (116, 46880),

Gene: Yorick_97 Start: 55719, Stop: 57158, Start Num: 23

Candidate Starts for Yorick_97:

(Start: 23 @55719 has 157 MA's), (25, 55728), (Start: 26 @55731 has 1 MA's), (45, 56073), (48, 56175), (56, 56340), (58, 56358), (68, 56460), (69, 56478), (70, 56481), (71, 56532), (73, 56550), (75, 56562), (79, 56595), (89, 56727), (92, 56757), (94, 56781), (97, 56823), (99, 56838), (105, 56943), (110, 56961), (116, 57036),

Gene: Zerg_100 Start: 54572, Stop: 56008, Start Num: 23

Candidate Starts for Zerg_100:

(Start: 23 @54572 has 157 MA's), (Start: 26 @54584 has 1 MA's), (45, 54923), (48, 55025), (54, 55160), (56, 55190), (58, 55208), (68, 55310), (69, 55328), (70, 55331), (71, 55382), (79, 55445), (89, 55577), (92, 55607), (94, 55631), (97, 55673), (99, 55688), (101, 55754), (105, 55793), (110, 55811), (116, 55886),

Gene: Zizzle_105 Start: 56648, Stop: 58084, Start Num: 23

Candidate Starts for Zizzle_105:

(Start: 23 @56648 has 157 MA's), (Start: 26 @56660 has 1 MA's), (45, 56999), (48, 57101), (50, 57122), (54, 57236), (56, 57266), (64, 57341), (68, 57386), (69, 57404), (70, 57407), (71, 57458), (75, 57488), (79, 57521), (89, 57653), (92, 57683), (94, 57707), (97, 57749), (99, 57764), (101, 57830), (105, 57869), (110, 57887), (116, 57962),