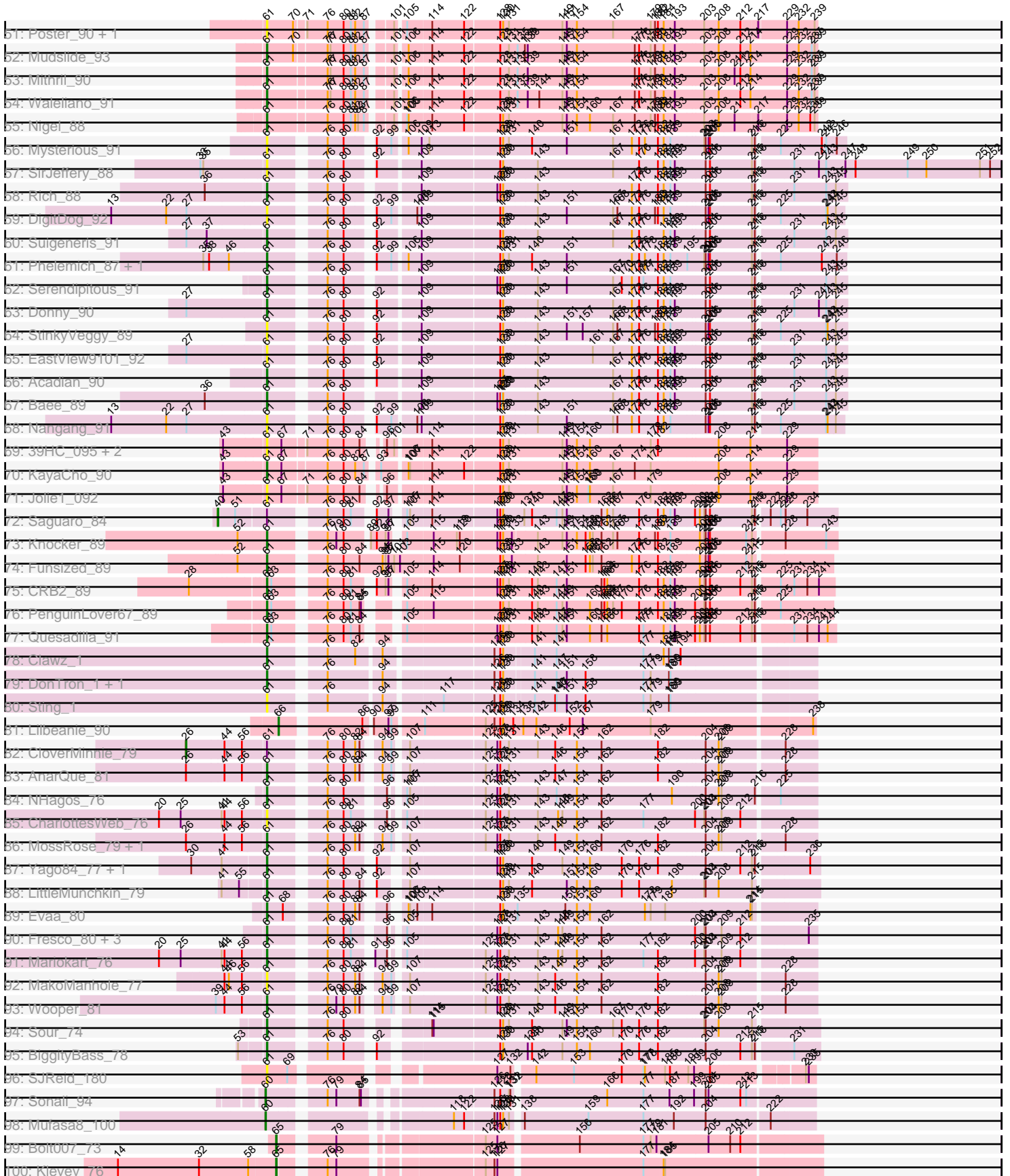
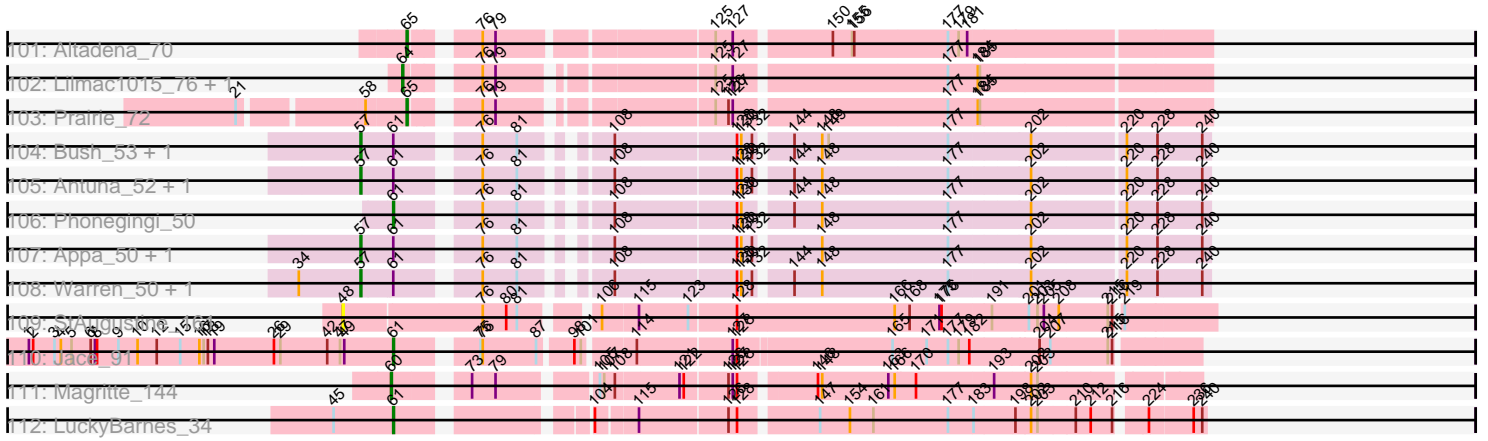


Pham 157588



Pham 157588



Note: Tracks are now grouped by subcluster and scaled. Switching in subcluster is indicated by changes in track color. Track scale is now set by default to display the region 30 bp upstream of start 1 to 30 bp downstream of the last possible start. If this default region is judged to be packed too tightly with annotated starts, the track will be further scaled to only show that region of the ORF with annotated starts. This action will be indicated by adding "Zoomed" to the title. For starts, yellow indicates the location of called starts comprised solely of Glimmer/GeneMark auto-annotations, green indicates the location of called starts with at least 1 manual gene annotation.

Pham 157588 Report

This analysis was run 04/13/24 on database version 558.

Pham number 157588 has 208 members, 33 are drafts.

Phages represented in each track:

- Track 1 : EastWest_82
- Track 2 : Franzy_71
- Track 3 : Brent_73
- Track 4 : King2_72
- Track 5 : NathanVaag_72
- Track 6 : Beans_72
- Track 7 : Piccoletto_73
- Track 8 : Jawnski_72
- Track 9 : GravityBall_77, Timinator_78, StevieBAY_78
- Track 10 : JKerns_75, Sonny_76, Jordan_77, Zartrosa_78
- Track 11 : Grekaycon_77, Shade_76, Martha_76, TaeYoung_77, BossLady_78
- Track 12 : Wyborn_77
- Track 13 : Sicarius2_78
- Track 14 : LeeroyJ_78
- Track 15 : Pippa_77
- Track 16 : BarretLemon_78
- Track 17 : Abba_70
- Track 18 : Indlovu_89
- Track 19 : LilMcDreamy_90
- Track 20 : ItsyBitsy1_82
- Track 21 : LizLemon_85, Rhinoforte_85, Sabella_85, Arbiter_82, Boyle_85, Kaleb_85, Blocker23_85, Ares_85, Calamitous_86, Faze9_84, Coffee_84, Bananafish_86, Lephleur_85, West99_85, Hedgerow_85
- Track 22 : Phantasmagoria_84, Godines_85, Tres_85
- Track 23 : Glass_87, Opia_86, Rosebush_83, Eaglehorse_86, Tinciduntolum_86, Brownie5_85, TA17A_86
- Track 24 : Allegro_85, Holeinone_85
- Track 25 : Qyrzula_76
- Track 26 : Laurie_84
- Track 27 : FrenchFry_86
- Track 28 : MasterPo_86
- Track 29 : Lars_86
- Track 30 : Kheth_85
- Track 31 : Jackstina_90, Tydolla_93, Ben11_97, Gervas_98, Halfpint_97, Yinz_95, Phlyer_97, Kronus_97, Rita1961_98, Morty007_95, Phayeta_99, Devonte_95, Compostia_96, Mortcellus_97, Obutu_99, MmasiCarm_98, Phaedrus_92, Casbah_97
- Track 32 : Neos5_96, Baloo_96, Gadget_96, Pipefish_96, ChaChing_97, Athena_99

- Track 33 : Marley1013_95, Akoma_98, Philly_96, Chandler_97, Audrey_97, Heathcliff_97, LestyG_95, Yahalom_95, Bernardo_94, RomaT_97, Daisy_96, Kamiyu_97
- Track 34 : OrangeOswald_96, HarveySr_94, Nozo_97
- Track 35 : SynergyX_98, RagingRooster_97, Corofin_97, Briakila_98, Deenasa_98, Abinghost_97, SlippinJimmy_100
- Track 36 : GlenHope_98
- Track 37 : BrownCNA_92, Prince_92, Lolalove_94
- Track 38 : Hangman_92
- Track 39 : Stinger_89
- Track 40 : Fortunato_89
- Track 41 : BobbyK_90, Heath_86, Frederick_90, Zemanar_90
- Track 42 : JaguarMi_86
- Track 43 : Apex_93, Hydro_92, VioletZ_94
- Track 44 : RawrgerThat_90
- Track 45 : JAMaL_92
- Track 46 : Cooper_93
- Track 47 : Magpie_88
- Track 48 : Austelle_92
- Track 49 : ChrisnMich_93
- Track 50 : Vincenzo_91, AlanGrant_92
- Track 51 : Poster_90, Nanao_91
- Track 52 : Mudslide_93
- Track 53 : Mithril_90
- Track 54 : Waleliano_91
- Track 55 : Nigel_88
- Track 56 : Mysterious_91
- Track 57 : SirJeffery_88
- Track 58 : Rich_88
- Track 59 : DigitDog_92
- Track 60 : Suigeneris_91
- Track 61 : Phelemich_87, Reprobate_89
- Track 62 : Serendipitous_91
- Track 63 : Donny_90
- Track 64 : StinkyVeggy_89
- Track 65 : EastView9101_92
- Track 66 : Acadian_90
- Track 67 : Bae_89
- Track 68 : Nangang_91
- Track 69 : 39HC_095, Hosp_090, 40BC_095
- Track 70 : KayaCho_90
- Track 71 : Jolie1_092
- Track 72 : Saguaro_84
- Track 73 : Knocker_89
- Track 74 : Funsized_89
- Track 75 : CRB2_89
- Track 76 : PenguinLover67_89
- Track 77 : Quesadilla_91
- Track 78 : Clawz_1
- Track 79 : DonTron_1, Soos_1
- Track 80 : Sting_1
- Track 81 : Lilbeanie_90
- Track 82 : CloverMinnie_79

- Track 83 : AnarQue_81
- Track 84 : NHagos_76
- Track 85 : CharlottesWeb_76
- Track 86 : MossRose_79, CaiB_80
- Track 87 : Yago84_77, Sisko_78
- Track 88 : LittleMunchkin_79
- Track 89 : Evaa_80
- Track 90 : Fresco_80, Axumite_80, Shatter_80, Ligma_80
- Track 91 : Mariokart_76
- Track 92 : MakoManhole_77
- Track 93 : Wooper_81
- Track 94 : Sour_74
- Track 95 : BiggityBass_78
- Track 96 : SJReid_180
- Track 97 : Sonali_94
- Track 98 : Mufasa8_100
- Track 99 : Bolt007_73
- Track 100 : Klevey_76
- Track 101 : Altadena_70
- Track 102 : LilMac1015_76, CalWood4100_76
- Track 103 : Prairie_72
- Track 104 : Bush_53, Blett_50
- Track 105 : Antuna_52, MenE_55
- Track 106 : Phonegingi_50
- Track 107 : Appa_50, Dropshot_50
- Track 108 : Warren_50, Pickles13_49
- Track 109 : StAugustine_161
- Track 110 : Jace_91
- Track 111 : Magritte_144
- Track 112 : LuckyBarnes_34

Summary of Final Annotations (See graph section above for start numbers):

The start number called the most often in the published annotations is 61, it was called in 111 of the 175 non-draft genes in the pham.

Genes that call this "Most Annotated" start:

- 39HC_095, 40BC_095, Abinghost_97, Acadian_90, AlanGrant_92, Allegro_85, AnarQue_81, Apex_93, Arbiter_82, Ares_85, Austelle_92, Axumite_80, Bae_89, Bananafish_86, Ben11_97, BiggityBass_78, Blocker23_85, BobbyK_90, Boyle_85, Briakila_98, BrownCNA_92, Brownie5_85, CRB2_89, CaiB_80, Calamitous_86, Casbah_97, CharlottesWeb_76, ChrisnMich_93, Clawz_1, Coffee_84, Compostia_96, Cooper_93, Corofin_97, Deenasa_98, Devonte_95, DigitDog_92, DonTron_1, Donny_90, Eaglehorse_86, EastView9101_92, Evaa_80, Faze9_84, Fortunato_89, Frederick_90, FrenchFry_86, Fresco_80, Funsized_89, Gervas_98, Glass_87, GlenHope_98, Godines_85, Halfpint_97, Hangman_92, Heath_86, Hedgerow_85, Holeinone_85, Hosp_090, Hydro_92, Indlovu_89, ItsyBitsy1_82, JAMaL_92, Jace_91, Jackstina_90, JaguarMi_86, Jolie1_092, Kaleb_85, KayaCho_90, Kheth_85, Knocker_89, Kronus_97, Lars_86, Laurie_84, Lephleur_85, Ligma_80, LilMcDreamy_90, LittleMunchkin_79, LizLemon_85, Lolalove_94,

LuckyBarnes_34, Magpie_88, MakoManhole_77, Mariokart_76, MasterPo_86, Mithril_90, MmasiCarm_98, Mortcellus_97, Morty007_95, MossRose_79, Mudslide_93, Mysterious_91, NHagos_76, Nanao_91, Nangang_91, Nigel_88, Obutu_99, Opia_86, PenguinLover67_89, Phaedruss_92, Phantasmagoria_84, Phayeta_99, Phelemich_87, Phlyer_97, Phonegingi_50, Poster_90, Prince_92, Quesadilla_91, RagingRooster_97, RawrgerThat_90, Reprobate_89, Rhinoforte_85, Rich_88, Rita1961_98, Rosebush_83, SJReid_180, Sabella_85, Serendipitous_91, Shatter_80, SirJeffery_88, Sisko_78, SlippinJimmy_100, Soos_1, Sour_74, Sting_1, Stinger_89, StinkyVeggy_89, Suigeneris_91, SynergyX_98, TA17A_86, Tinciduntolum_86, Tres_85, Tydolla_93, Vincenzo_91, VioletZ_94, Waleliano_91, West99_85, Wooper_81, Yago84_77, Yinz_95, Zemanar_90,

Genes that have the "Most Annotated" start but do not call it:

- Akoma_98, Antuna_52, Appa_50, Athena_99, Audrey_97, Baloo_96, Bernardo_94, Blett_50, Bush_53, ChaChing_97, Chandler_97, CloverMinnie_79, Daisy_96, Dropshot_50, Gadget_96, HarveySr_94, Heathcliff_97, Kamiyu_97, LestyG_95, Marley1013_95, MenE_55, Neos5_96, Nozo_97, OrangeOswald_96, Philly_96, Pickles13_49, Pipefish_96, Qyrzula_76, RomaT_97, Saguario_84, Warren_50, Yahalom_95,

Genes that do not have the "Most Annotated" start:

- Abba_70, Altadena_70, BarretLemon_78, Beans_72, Bolt007_73, BossLady_78, Brent_73, CalWood4100_76, EastWest_82, Franzy_71, GravityBall_77, Grekaycon_77, JKerns_75, Jawnski_72, Jordan_77, King2_72, Klevey_76, LeeroyJ_78, Lilbeanie_90, Lilmac1015_76, Magritte_144, Martha_76, Mufasa8_100, NathanVaag_72, Piccoletto_73, Pippa_77, Prairie_72, Shade_76, Sicarius2_78, Sonali_94, Sonny_76, StAugustine_161, StevieBAY_78, TaeYoung_77, Timinator_78, Wyborn_77, Zartrosa_78,

Summary by start number:

Start 26:

- Found in 5 of 208 (2.4%) of genes in pham
- Manual Annotations of this start: 1 of 175
- Called 20.0% of time when present
- Phage (with cluster) where this start called: CloverMinnie_79 (DR),

Start 31:

- Found in 47 of 208 (22.6%) of genes in pham
- Manual Annotations of this start: 6 of 175
- Called 12.8% of time when present
- Phage (with cluster) where this start called: Athena_99 (B3), Baloo_96 (B3), ChaChing_97 (B3), Gadget_96 (B3), Neos5_96 (B3), Pipefish_96 (B3),

Start 40:

- Found in 1 of 208 (0.5%) of genes in pham
- Manual Annotations of this start: 1 of 175
- Called 100.0% of time when present
- Phage (with cluster) where this start called: Saguario_84 (B7),

Start 48:

- Found in 1 of 208 (0.5%) of genes in pham
- No Manual Annotations of this start.

- Called 100.0% of time when present
- Phage (with cluster) where this start called: StAugustine_161 (singleton),

Start 52:

- Found in 49 of 208 (23.6%) of genes in pham
- Manual Annotations of this start: 15 of 175
- Called 30.6% of time when present
- Phage (with cluster) where this start called: Akoma_98 (B3), Audrey_97 (B3), Bernardo_94 (B3), Chandler_97 (B3), Daisy_96 (B3), HarveySr_94 (B3), Heathcliff_97 (B3), Kamiyu_97 (B3), LestyG_95 (B3), Marley1013_95 (B3), Nozo_97 (B3), OrangeOswald_96 (B3), Philly_96 (B3), RomaT_97 (B3), Yahalom_95 (B3),

Start 54:

- Found in 3 of 208 (1.4%) of genes in pham
- Manual Annotations of this start: 2 of 175
- Called 66.7% of time when present
- Phage (with cluster) where this start called: Beans_72 (AO1), Piccoletto_73 (AO1),

Start 57:

- Found in 8 of 208 (3.8%) of genes in pham
- Manual Annotations of this start: 6 of 175
- Called 100.0% of time when present
- Phage (with cluster) where this start called: Antuna_52 (GA), Appa_50 (GA), Blett_50 (GA), Bush_53 (GA), Dropshot_50 (GA), MenE_55 (GA), Pickles13_49 (GA), Warren_50 (GA),

Start 58:

- Found in 6 of 208 (2.9%) of genes in pham
- Manual Annotations of this start: 2 of 175
- Called 33.3% of time when present
- Phage (with cluster) where this start called: Franzy_71 (AO1), Jawnski_72 (AO1),

Start 60:

- Found in 3 of 208 (1.4%) of genes in pham
- Manual Annotations of this start: 3 of 175
- Called 100.0% of time when present
- Phage (with cluster) where this start called: Magritte_144 (singleton), Mufasa8_100 (FG), Sonali_94 (FG),

Start 61:

- Found in 171 of 208 (82.2%) of genes in pham
- Manual Annotations of this start: 111 of 175
- Called 81.3% of time when present
- Phage (with cluster) where this start called: 39HC_095 (B6), 40BC_095 (B6), Abinghost_97 (B3), Acadian_90 (B5), AlanGrant_92 (B4), Allegro_85 (B2), AnarQue_81 (DR), Apex_93 (B4), Arbiter_82 (B2), Ares_85 (B2), Austelle_92 (B4), Axumite_80 (DR), Baee_89 (B5), Bananafish_86 (B2), Ben11_97 (B3), BiggityBass_78 (DR), Blocker23_85 (B2), BobbyK_90 (B4), Boyle_85 (B2), Briakila_98 (B3), BrownCNA_92 (B4), Brownie5_85 (B2), CRB2_89 (B9), CaiB_80 (DR), Calamitous_86 (B2), Casbah_97 (B3), CharlottesWeb_76 (DR), ChrisnMich_93 (B4), Clawz_1 (CP), Coffee_84 (B2), Compostia_96 (B3), Cooper_93 (B4), Corofin_97 (B3), Deenasa_98 (B3), Devonte_95 (B3), DigitDog_92 (B5), DonTron_1 (CP), Donny_90 (B5), Eaglehorse_86 (B2), EastView9101_92 (B5), Evaa_80 (DR),

Faze9_84 (B2), Fortunato_89 (B4), Frederick_90 (B4), FrenchFry_86 (B2), Fresco_80 (DR), Funsized_89 (B9), Gervas_98 (B3), Glass_87 (B2), GlenHope_98 (B3), Godines_85 (B2), Halfpint_97 (B3), Hangman_92 (B4), Heath_86 (B4), Hedgerow_85 (B2), Holeinone_85 (B2), Hosp_090 (B6), Hydro_92 (B4), Indlovu_89 (B11), ItsyBitsy1_82 (B2), JAMaL_92 (B4), Jace_91 (singleton), Jackstina_90 (B3), JaguarMi_86 (B4), Jolie1_092 (B6), Kaleb_85 (B2), KayaCho_90 (B6), Kheth_85 (B2), Knocker_89 (B9), Kronus_97 (B3), Lars_86 (B2), Laurie_84 (B2), Lephleur_85 (B2), Ligma_80 (DR), LilMcDreamy_90 (B12), LittleMunchkin_79 (DR), LizLemon_85 (B2), Lolalove_94 (B4), LuckyBarnes_34 (singleton), Magpie_88 (B4), MakoManhole_77 (DR), Mariokart_76 (DR), MasterPo_86 (B2), Mithril_90 (B4), MmasiCarm_98 (B3), Mortcellus_97 (B3), Morty007_95 (B3), MossRose_79 (DR), Mudslide_93 (B4), Mysterious_91 (B5), NHagos_76 (DR), Nanao_91 (B4), Nangang_91 (B5), Nigel_88 (B4), Obutu_99 (B3), Opia_86 (B2), PenguinLover67_89 (B9), Phaedrus_92 (B3), Phantasmagoria_84 (B2), Phayeta_99 (B3), Phelemich_87 (B5), Phlyer_97 (B3), Phonegingi_50 (GA), Poster_90 (B4), Prince_92 (B4), Quesadilla_91 (B9), RagingRooster_97 (B3), RawrgerThat_90 (B4), Reprobate_89 (B5), Rhinoforte_85 (B2), Rich_88 (B5), Rita1961_98 (B3), Rosebush_83 (B2), SJReid_180 (FC), Sabella_85 (B2), Serendipitous_91 (B5), Shatter_80 (DR), SirJeffery_88 (B5), Sisko_78 (DR), SlippinJimmy_100 (B3), Soos_1 (CP), Sour_74 (DR), Sting_1 (CP), Stinger_89 (B4), StinkyVeggy_89 (B5), Suigeneris_91 (B5), SynergyX_98 (B3), TA17A_86 (B2), Tinciduntolum_86 (B2), Tres_85 (B2), Tydolla_93 (B3), Vincenzo_91 (B4), VioletZ_94 (B4), Waleliano_91 (B4), West99_85 (B2), Wooper_81 (DR), Yago84_77 (DR), Yinz_95 (B3), Zemanar_90 (B4),

Start 62:

- Found in 5 of 208 (2.4%) of genes in pham
- Manual Annotations of this start: 2 of 175
- Called 40.0% of time when present
- Phage (with cluster) where this start called: BarretLemon_78 (AO2), LeeroyJ_78 (AO2),

Start 64:

- Found in 28 of 208 (13.5%) of genes in pham
- Manual Annotations of this start: 20 of 175
- Called 78.6% of time when present
- Phage (with cluster) where this start called: Abba_70 (AO3), BossLady_78 (AO2), Brent_73 (AO1), CalWood4100_76 (FH), EastWest_82 (AO), GravityBall_77 (AO2), Grekaycon_77 (AO2), JKerns_75 (AO2), Jordan_77 (AO2), King2_72 (AO1), Lilmac1015_76 (FH), Martha_76 (AO2), NathanVaag_72 (AO1), Pippa_77 (AO2), Shade_76 (AO2), Sicarius2_78 (AO2), Sonny_76 (AO2), StevieBAY_78 (AO2), TaeYoung_77 (AO2), Timinator_78 (AO2), Wyborn_77 (AO2), Zartrosa_78 (AO2),

Start 65:

- Found in 4 of 208 (1.9%) of genes in pham
- Manual Annotations of this start: 4 of 175
- Called 100.0% of time when present
- Phage (with cluster) where this start called: Altadena_70 (FH), Bolt007_73 (FH), Klevey_76 (FH), Prairie_72 (FH),

Start 66:

- Found in 1 of 208 (0.5%) of genes in pham
- Manual Annotations of this start: 1 of 175
- Called 100.0% of time when present

- Phage (with cluster) where this start called: Lilbeanie_90 (DE5),

Start 67:

- Found in 86 of 208 (41.3%) of genes in pham
- Manual Annotations of this start: 1 of 175
- Called 1.2% of time when present
- Phage (with cluster) where this start called: Qyrzula_76 (B2),

Summary by clusters:

There are 21 clusters represented in this pham: singleton, AO1, FC, B3, B2, AO, DE5, B4, B5, B6, B7, B12, AO2, GA, FG, FH, AO3, CP, DR, B9, B11,

Info for manual annotations of cluster AO:

- Start number 64 was manually annotated 1 time for cluster AO.

Info for manual annotations of cluster AO1:

- Start number 54 was manually annotated 2 times for cluster AO1.
- Start number 58 was manually annotated 2 times for cluster AO1.
- Start number 64 was manually annotated 3 times for cluster AO1.

Info for manual annotations of cluster AO2:

- Start number 62 was manually annotated 2 times for cluster AO2.
- Start number 64 was manually annotated 14 times for cluster AO2.

Info for manual annotations of cluster AO3:

- Start number 64 was manually annotated 1 time for cluster AO3.

Info for manual annotations of cluster B11:

- Start number 61 was manually annotated 1 time for cluster B11.

Info for manual annotations of cluster B12:

- Start number 61 was manually annotated 1 time for cluster B12.

Info for manual annotations of cluster B2:

- Start number 61 was manually annotated 31 times for cluster B2.
- Start number 67 was manually annotated 1 time for cluster B2.

Info for manual annotations of cluster B3:

- Start number 31 was manually annotated 6 times for cluster B3.
- Start number 52 was manually annotated 15 times for cluster B3.
- Start number 61 was manually annotated 23 times for cluster B3.

Info for manual annotations of cluster B4:

- Start number 61 was manually annotated 22 times for cluster B4.

Info for manual annotations of cluster B5:

- Start number 61 was manually annotated 8 times for cluster B5.

Info for manual annotations of cluster B6:

- Start number 61 was manually annotated 1 time for cluster B6.

Info for manual annotations of cluster B7:

- Start number 40 was manually annotated 1 time for cluster B7.

Info for manual annotations of cluster B9:

- Start number 61 was manually annotated 5 times for cluster B9.

Info for manual annotations of cluster CP:

- Start number 61 was manually annotated 2 times for cluster CP.

Info for manual annotations of cluster DE5:

- Start number 66 was manually annotated 1 time for cluster DE5.

Info for manual annotations of cluster DR:

- Start number 26 was manually annotated 1 time for cluster DR.
- Start number 61 was manually annotated 14 times for cluster DR.

Info for manual annotations of cluster FG:

- Start number 60 was manually annotated 2 times for cluster FG.

Info for manual annotations of cluster FH:

- Start number 64 was manually annotated 1 time for cluster FH.
- Start number 65 was manually annotated 4 times for cluster FH.

Info for manual annotations of cluster GA:

- Start number 57 was manually annotated 6 times for cluster GA.
- Start number 61 was manually annotated 1 time for cluster GA.

Gene Information:

Gene: 39HC_095 Start: 69471, Stop: 68434, Start Num: 61

Candidate Starts for 39HC_095:

(43, 69552), (Start: 61 @69471 has 111 MA's), (Start: 67 @69441 has 1 MA's), (71, 69399), (76, 69357), (80, 69324), (84, 69291), (96, 69270), (101, 69261), (114, 69198), (128, 69066), (130, 69060), (131, 69048), (149, 68940), (151, 68931), (154, 68910), (160, 68883), (179, 68760), (182, 68745), (208, 68628), (214, 68565), (229, 68493),

Gene: 40BC_095 Start: 69471, Stop: 68434, Start Num: 61

Candidate Starts for 40BC_095:

(43, 69552), (Start: 61 @69471 has 111 MA's), (Start: 67 @69441 has 1 MA's), (71, 69399), (76, 69357), (80, 69324), (84, 69291), (96, 69270), (101, 69261), (114, 69198), (128, 69066), (130, 69060), (131, 69048), (149, 68940), (151, 68931), (154, 68910), (160, 68883), (179, 68760), (182, 68745), (208, 68628), (214, 68565), (229, 68493),

Gene: Abba_70 Start: 45948, Stop: 44947, Start Num: 64

Candidate Starts for Abba_70:

(Start: 64 @45948 has 20 MA's), (79, 45855), (102, 45753), (107, 45732), (112, 45699), (125, 45588), (128, 45558), (131, 45540), (148, 45456), (149, 45447), (156, 45411), (161, 45384), (179, 45267), (227, 45015), (232, 44988), (236, 44964), (239, 44955),

Gene: Abinghost_97 Start: 66868, Stop: 65810, Start Num: 61

Candidate Starts for Abinghost_97:

(24, 67042), (Start: 31 @67012 has 6 MA's), (Start: 52 @66922 has 15 MA's), (Start: 61 @66868 has 111 MA's), (Start: 67 @66838 has 1 MA's), (76, 66754), (80, 66721), (96, 66649), (114, 66577), (124, 66496), (127, 66451), (128, 66445), (130, 66439), (131, 66427), (133, 66421), (139, 66391), (154, 66289), (158, 66271), (166, 66226), (177, 66154), (179, 66139), (185, 66112), (189, 66103), (201, 66046), (212, 65962), (215, 65938), (223, 65908),

Gene: Acadian_90 Start: 67115, Stop: 66042, Start Num: 61

Candidate Starts for Acadian_90:

(Start: 61 @67115 has 111 MA's), (76, 67019), (80, 66986), (92, 66944), (109, 66863), (128, 66713), (130, 66707), (143, 66641), (167, 66488), (172, 66449), (176, 66434), (182, 66398), (184, 66389), (189, 66377), (193, 66368), (204, 66308), (206, 66299), (215, 66215), (216, 66209), (231, 66146), (243, 66080), (245, 66062),

Gene: Akoma_98 Start: 66999, Stop: 65887, Start Num: 52

Candidate Starts for Akoma_98:

(24, 67119), (Start: 31 @67089 has 6 MA's), (Start: 52 @66999 has 15 MA's), (Start: 61 @66945 has 111 MA's), (Start: 67 @66915 has 1 MA's), (76, 66831), (80, 66798), (96, 66726), (114, 66654), (124, 66573), (127, 66528), (128, 66522), (130, 66516), (131, 66504), (139, 66468), (154, 66366), (158, 66348), (166, 66303), (177, 66231), (179, 66216), (185, 66189), (189, 66180), (201, 66123), (212, 66039), (215, 66015), (223, 65985),

Gene: AlanGrant_92 Start: 69472, Stop: 68423, Start Num: 61

Candidate Starts for AlanGrant_92:

(11, 69811), (Start: 61 @69472 has 111 MA's), (70, 69418), (76, 69358), (77, 69352), (80, 69325), (84, 69292), (101, 69247), (105, 69232), (106, 69229), (114, 69184), (116, 69166), (119, 69136), (122, 69121), (127, 69058), (128, 69052), (130, 69046), (131, 69034), (135, 69016), (145, 68947), (147, 68938), (149, 68926), (154, 68896), (167, 68824), (174, 68779), (179, 68746), (182, 68731), (184, 68722), (203, 68644), (211, 68584), (212, 68572), (219, 68530), (230, 68476), (231, 68470), (232, 68461), (237, 68434), (239, 68428),

Gene: Allegro_85 Start: 64858, Stop: 63788, Start Num: 61

Candidate Starts for Allegro_85:

(23, 65053), (Start: 61 @64858 has 111 MA's), (Start: 67 @64828 has 1 MA's), (76, 64762), (78, 64753), (80, 64729), (82, 64705), (88, 64681), (108, 64585), (128, 64426), (130, 64420), (131, 64408), (139, 64375), (143, 64354), (150, 64297), (151, 64294), (158, 64255), (160, 64246), (164, 64216), (167, 64201), (170, 64183), (173, 64159), (177, 64138), (182, 64108), (189, 64087), (203, 64021), (204, 64018), (208, 63991), (209, 63985), (221, 63910), (226, 63874),

Gene: Altadena_70 Start: 44516, Stop: 43500, Start Num: 65

Candidate Starts for Altadena_70:

(Start: 65 @44516 has 4 MA's), (76, 44447), (79, 44429), (125, 44156), (127, 44132), (150, 44009), (155, 43982), (156, 43979), (177, 43850), (179, 43835), (181, 43823),

Gene: AnarQue_81 Start: 60018, Stop: 58999, Start Num: 61

Candidate Starts for AnarQue_81:

(Start: 26 @60174 has 1 MA's), (44, 60096), (56, 60060), (Start: 61 @60018 has 111 MA's), (76, 59922), (80, 59889), (82, 59865), (84, 59856), (94, 59832), (99, 59814), (107, 59793), (125, 59646), (127, 59622), (128, 59616), (131, 59598), (146, 59508), (154, 59463), (162, 59412), (182, 59298), (204, 59208), (208, 59181), (209, 59175), (228, 59064),

Gene: Antuna_52 Start: 31056, Stop: 32108, Start Num: 57

Candidate Starts for Antuna_52:

(Start: 57 @31056 has 6 MA's), (Start: 61 @31098 has 111 MA's), (76, 31194), (81, 31242), (108, 31332), (128, 31491), (130, 31497), (132, 31512), (144, 31554), (148, 31593), (177, 31767), (202, 31875), (220, 31995), (228, 32037), (240, 32097),

Gene: Apex_93 Start: 68952, Stop: 67894, Start Num: 61

Candidate Starts for Apex_93:

(Start: 61 @68952 has 111 MA's), (70, 68898), (76, 68838), (77, 68832), (80, 68805), (81, 68790), (82, 68781), (87, 68763), (101, 68724), (106, 68706), (107, 68703), (114, 68661), (122, 68598), (128, 68529), (131, 68511), (135, 68493), (139, 68475), (149, 68403), (151, 68394), (154, 68373), (174, 68256), (176, 68247), (179, 68223), (180, 68214), (193, 68178), (203, 68121), (208, 68091), (211, 68061), (212, 68049), (214, 68028), (229, 67953), (232, 67932), (239, 67899),

Gene: Appa_50 Start: 30821, Stop: 31873, Start Num: 57

Candidate Starts for Appa_50:

(Start: 57 @30821 has 6 MA's), (Start: 61 @30863 has 111 MA's), (76, 30959), (81, 31007), (108, 31097), (128, 31256), (130, 31262), (132, 31277), (148, 31358), (177, 31532), (202, 31640), (220, 31760), (228, 31802), (240, 31862),

Gene: Arbiter_82 Start: 64898, Stop: 63828, Start Num: 61

Candidate Starts for Arbiter_82:

(Start: 61 @64898 has 111 MA's), (Start: 67 @64868 has 1 MA's), (76, 64802), (78, 64793), (80, 64769), (82, 64745), (88, 64721), (128, 64466), (130, 64460), (131, 64448), (139, 64415), (143, 64394), (150, 64337), (151, 64334), (158, 64295), (160, 64286), (164, 64256), (167, 64241), (170, 64223), (173, 64199), (177, 64178), (182, 64148), (189, 64127), (203, 64061), (204, 64058), (208, 64031), (209, 64025), (221, 63950), (226, 63914),

Gene: Ares_85 Start: 64857, Stop: 63787, Start Num: 61

Candidate Starts for Ares_85:

(Start: 61 @64857 has 111 MA's), (Start: 67 @64827 has 1 MA's), (76, 64761), (78, 64752), (80, 64728), (82, 64704), (88, 64680), (128, 64425), (130, 64419), (131, 64407), (139, 64374), (143, 64353), (150, 64296), (151, 64293), (158, 64254), (160, 64245), (164, 64215), (167, 64200), (170, 64182), (173, 64158), (177, 64137), (182, 64107), (189, 64086), (203, 64020), (204, 64017), (208, 63990), (209, 63984), (221, 63909), (226, 63873),

Gene: Athena_99 Start: 67785, Stop: 66583, Start Num: 31

Candidate Starts for Athena_99:

(24, 67815), (Start: 31 @67785 has 6 MA's), (Start: 52 @67695 has 15 MA's), (Start: 61 @67641 has 111 MA's), (Start: 67 @67611 has 1 MA's), (76, 67527), (80, 67494), (96, 67422), (114, 67350), (124, 67269), (127, 67224), (128, 67218), (130, 67212), (131, 67200), (139, 67164), (154, 67062), (158, 67044), (166, 66999), (177, 66927), (179, 66912), (185, 66885), (189, 66876), (201, 66819), (212, 66735), (215, 66711), (223, 66681),

Gene: Audrey_97 Start: 66949, Stop: 65837, Start Num: 52

Candidate Starts for Audrey_97:

(24, 67069), (Start: 31 @67039 has 6 MA's), (Start: 52 @66949 has 15 MA's), (Start: 61 @66895 has 111 MA's), (Start: 67 @66865 has 1 MA's), (76, 66781), (80, 66748), (96, 66676), (114, 66604), (124, 66523), (127, 66478), (128, 66472), (130, 66466), (131, 66454), (139, 66418), (154, 66316), (158, 66298), (166, 66253), (177, 66181), (179, 66166), (185, 66139), (189, 66130), (201, 66073), (212, 65989), (215, 65965), (223, 65935),

Gene: Austelle_92 Start: 69484, Stop: 68426, Start Num: 61

Candidate Starts for Austelle_92:

(Start: 61 @69484 has 111 MA's), (76, 69370), (77, 69364), (80, 69337), (81, 69322), (82, 69313), (87, 69295), (101, 69256), (106, 69238), (107, 69235), (114, 69193), (122, 69130), (128, 69061), (131, 69043), (135, 69025), (139, 69007), (149, 68935), (151, 68926), (154, 68905), (174, 68788), (176, 68779), (179, 68755), (180, 68746), (184, 68731), (193, 68710), (203, 68653), (208, 68623), (211, 68593), (212, 68581), (214, 68560), (229, 68485), (232, 68464), (237, 68437), (239, 68431),

Gene: Axumite_80 Start: 59316, Stop: 58309, Start Num: 61

Candidate Starts for Axumite_80:

(Start: 61 @59316 has 111 MA's), (76, 59220), (80, 59187), (81, 59172), (96, 59121), (105, 59106), (127, 58932), (128, 58926), (131, 58908), (143, 58854), (148, 58812), (149, 58803), (154, 58773), (162, 58722), (200, 58539), (203, 58521), (204, 58518), (209, 58485), (212, 58449), (235, 58326),

Gene: Bae_89 Start: 67621, Stop: 66548, Start Num: 61

Candidate Starts for Bae_89:

(36, 67735), (Start: 61 @67621 has 111 MA's), (76, 67525), (80, 67492), (109, 67369), (127, 67225), (128, 67219), (129, 67216), (130, 67213), (143, 67147), (167, 66994), (172, 66955), (176, 66940), (182, 66904), (184, 66895), (189, 66883), (193, 66874), (204, 66814), (206, 66805), (215, 66721), (216, 66715), (231, 66652), (243, 66586), (245, 66568),

Gene: Baloo_96 Start: 66892, Stop: 65690, Start Num: 31

Candidate Starts for Baloo_96:

(24, 66922), (Start: 31 @66892 has 6 MA's), (Start: 52 @66802 has 15 MA's), (Start: 61 @66748 has 111 MA's), (Start: 67 @66718 has 1 MA's), (76, 66634), (80, 66601), (96, 66529), (114, 66457), (124, 66376), (127, 66331), (128, 66325), (130, 66319), (131, 66307), (139, 66271), (154, 66169), (158, 66151), (166, 66106), (177, 66034), (179, 66019), (185, 65992), (189, 65983), (201, 65926), (212, 65842), (215, 65818), (223, 65788),

Gene: Bananafish_86 Start: 64794, Stop: 63724, Start Num: 61

Candidate Starts for Bananafish_86:

(Start: 61 @64794 has 111 MA's), (Start: 67 @64764 has 1 MA's), (76, 64698), (78, 64689), (80, 64665), (82, 64641), (88, 64617), (128, 64362), (130, 64356), (131, 64344), (139, 64311), (143, 64290), (150, 64233), (151, 64230), (158, 64191), (160, 64182), (164, 64152), (167, 64137), (170, 64119), (173, 64095), (177, 64074), (182, 64044), (189, 64023), (203, 63957), (204, 63954), (208, 63927), (209, 63921), (221, 63846), (226, 63810),

Gene: BarretLemon_78 Start: 50937, Stop: 49933, Start Num: 62

Candidate Starts for BarretLemon_78:

(Start: 62 @50937 has 2 MA's), (Start: 64 @50931 has 20 MA's), (79, 50835), (88, 50772), (125, 50574), (127, 50550), (128, 50544), (131, 50526), (132, 50523), (146, 50448), (156, 50397), (170, 50313), (179, 50253), (189, 50217), (196, 50184), (227, 50001), (236, 49950),

Gene: Beans_72 Start: 49478, Stop: 48408, Start Num: 54

Candidate Starts for Beans_72:

(Start: 54 @49478 has 2 MA's), (Start: 64 @49415 has 20 MA's), (88, 49253), (96, 49232), (102, 49214), (110, 49169), (112, 49160), (116, 49133), (125, 49049), (126, 49031), (127, 49025), (128, 49019), (131, 49001), (156, 48872), (177, 48743), (179, 48728), (218, 48521), (227, 48476), (237, 48422),

Gene: Ben11_97 Start: 67125, Stop: 66067, Start Num: 61

Candidate Starts for Ben11_97:

(24, 67299), (Start: 31 @67269 has 6 MA's), (Start: 52 @67179 has 15 MA's), (Start: 61 @67125 has 111 MA's), (Start: 67 @67095 has 1 MA's), (76, 67011), (80, 66978), (96, 66906), (114, 66834), (124, 66753), (127, 66708), (128, 66702), (130, 66696), (131, 66684), (139, 66648), (154, 66546), (158,

66528), (166, 66483), (177, 66411), (179, 66396), (185, 66369), (189, 66360), (201, 66303), (212, 66219), (215, 66195), (223, 66165),

Gene: Bernardo_94 Start: 66473, Stop: 65361, Start Num: 52

Candidate Starts for Bernardo_94:

(24, 66593), (Start: 31 @66563 has 6 MA's), (Start: 52 @66473 has 15 MA's), (Start: 61 @66419 has 111 MA's), (Start: 67 @66389 has 1 MA's), (76, 66305), (80, 66272), (96, 66200), (114, 66128), (124, 66047), (127, 66002), (128, 65996), (130, 65990), (131, 65978), (139, 65942), (154, 65840), (158, 65822), (166, 65777), (177, 65705), (179, 65690), (185, 65663), (189, 65654), (201, 65597), (212, 65513), (215, 65489), (223, 65459),

Gene: BiggityBass_78 Start: 60906, Stop: 59896, Start Num: 61

Candidate Starts for BiggityBass_78:

(53, 60951), (Start: 61 @60906 has 111 MA's), (76, 60810), (80, 60777), (92, 60735), (128, 60519), (130, 60513), (139, 60465), (140, 60456), (149, 60393), (154, 60363), (160, 60336), (170, 60273), (176, 60237), (182, 60198), (204, 60108), (212, 60039), (215, 60015), (216, 60009), (231, 59949),

Gene: Blett_50 Start: 31007, Stop: 32059, Start Num: 57

Candidate Starts for Blett_50:

(Start: 57 @31007 has 6 MA's), (Start: 61 @31049 has 111 MA's), (76, 31145), (81, 31193), (108, 31283), (128, 31442), (130, 31448), (132, 31463), (144, 31505), (148, 31544), (149, 31553), (177, 31718), (202, 31826), (220, 31946), (228, 31988), (240, 32048),

Gene: Blocker23_85 Start: 64859, Stop: 63789, Start Num: 61

Candidate Starts for Blocker23_85:

(Start: 61 @64859 has 111 MA's), (Start: 67 @64829 has 1 MA's), (76, 64763), (78, 64754), (80, 64730), (82, 64706), (88, 64682), (128, 64427), (130, 64421), (131, 64409), (139, 64376), (143, 64355), (150, 64298), (151, 64295), (158, 64256), (160, 64247), (164, 64217), (167, 64202), (170, 64184), (173, 64160), (177, 64139), (182, 64109), (189, 64088), (203, 64022), (204, 64019), (208, 63992), (209, 63986), (221, 63911), (226, 63875),

Gene: BobbyK_90 Start: 68460, Stop: 67402, Start Num: 61

Candidate Starts for BobbyK_90:

(Start: 61 @68460 has 111 MA's), (70, 68406), (71, 68388), (76, 68346), (77, 68340), (80, 68313), (81, 68298), (82, 68289), (87, 68271), (101, 68232), (106, 68214), (114, 68169), (122, 68106), (128, 68037), (131, 68019), (135, 68001), (139, 67983), (149, 67911), (151, 67902), (154, 67881), (174, 67764), (176, 67755), (179, 67731), (180, 67722), (184, 67707), (193, 67686), (203, 67629), (208, 67599), (211, 67569), (212, 67557), (214, 67536), (229, 67461), (232, 67440), (239, 67407),

Gene: Bolt007_73 Start: 46402, Stop: 45404, Start Num: 65

Candidate Starts for Bolt007_73:

(Start: 65 @46402 has 4 MA's), (79, 46315), (125, 46057), (127, 46033), (156, 45880), (177, 45751), (179, 45736), (181, 45724), (205, 45622), (210, 45580), (212, 45559),

Gene: BossLady_78 Start: 50700, Stop: 49705, Start Num: 64

Candidate Starts for BossLady_78:

(Start: 64 @50700 has 20 MA's), (79, 50607), (88, 50544), (95, 50526), (125, 50346), (127, 50322), (128, 50316), (131, 50298), (132, 50295), (146, 50220), (156, 50169), (177, 50040), (179, 50025), (189, 49989), (196, 49956), (227, 49773),

Gene: Boyle_85 Start: 64906, Stop: 63836, Start Num: 61

Candidate Starts for Boyle_85:

(Start: 61 @64906 has 111 MA's), (Start: 67 @64876 has 1 MA's), (76, 64810), (78, 64801), (80, 64777), (82, 64753), (88, 64729), (128, 64474), (130, 64468), (131, 64456), (139, 64423), (143, 64402), (150, 64345), (151, 64342), (158, 64303), (160, 64294), (164, 64264), (167, 64249), (170, 64231), (173, 64207), (177, 64186), (182, 64156), (189, 64135), (203, 64069), (204, 64066), (208, 64039), (209, 64033), (221, 63958), (226, 63922),

Gene: Brent_73 Start: 49498, Stop: 48494, Start Num: 64

Candidate Starts for Brent_73:

(Start: 58 @49543 has 2 MA's), (59, 49516), (Start: 64 @49498 has 20 MA's), (96, 49318), (102, 49300), (110, 49255), (112, 49246), (116, 49219), (125, 49135), (127, 49111), (128, 49105), (131, 49087), (156, 48958), (177, 48829), (179, 48814), (218, 48607), (227, 48562), (237, 48508),

Gene: Briakila_98 Start: 67399, Stop: 66341, Start Num: 61

Candidate Starts for Briakila_98:

(24, 67573), (Start: 31 @67543 has 6 MA's), (Start: 52 @67453 has 15 MA's), (Start: 61 @67399 has 111 MA's), (Start: 67 @67369 has 1 MA's), (76, 67285), (80, 67252), (96, 67180), (114, 67108), (124, 67027), (127, 66982), (128, 66976), (130, 66970), (131, 66958), (133, 66952), (139, 66922), (154, 66820), (158, 66802), (166, 66757), (177, 66685), (179, 66670), (185, 66643), (189, 66634), (201, 66577), (212, 66493), (215, 66469), (223, 66439),

Gene: BrownCNA_92 Start: 68899, Stop: 67841, Start Num: 61

Candidate Starts for BrownCNA_92:

(Start: 61 @68899 has 111 MA's), (76, 68785), (77, 68779), (80, 68752), (81, 68737), (82, 68728), (87, 68710), (101, 68671), (106, 68653), (114, 68608), (122, 68545), (128, 68476), (131, 68458), (135, 68440), (138, 68428), (139, 68422), (149, 68350), (151, 68341), (154, 68320), (174, 68203), (176, 68194), (179, 68170), (180, 68161), (184, 68146), (193, 68125), (203, 68068), (208, 68038), (212, 67996), (214, 67975), (229, 67900), (232, 67879), (237, 67852), (239, 67846),

Gene: Brownie5_85 Start: 64906, Stop: 63836, Start Num: 61

Candidate Starts for Brownie5_85:

(Start: 61 @64906 has 111 MA's), (Start: 67 @64876 has 1 MA's), (76, 64810), (78, 64801), (80, 64777), (82, 64753), (88, 64729), (128, 64474), (130, 64468), (131, 64456), (139, 64423), (143, 64402), (150, 64345), (151, 64342), (158, 64303), (160, 64294), (164, 64264), (167, 64249), (173, 64207), (177, 64186), (182, 64156), (189, 64135), (203, 64069), (204, 64066), (208, 64039), (209, 64033), (221, 63958), (226, 63922),

Gene: Bush_53 Start: 30955, Stop: 32007, Start Num: 57

Candidate Starts for Bush_53:

(Start: 57 @30955 has 6 MA's), (Start: 61 @30997 has 111 MA's), (76, 31093), (81, 31141), (108, 31231), (128, 31390), (130, 31396), (132, 31411), (144, 31453), (148, 31492), (149, 31501), (177, 31666), (202, 31774), (220, 31894), (228, 31936), (240, 31996),

Gene: CRB2_89 Start: 68970, Stop: 67930, Start Num: 61

Candidate Starts for CRB2_89:

(28, 69111), (Start: 61 @68970 has 111 MA's), (63, 68961), (76, 68874), (80, 68841), (81, 68826), (92, 68799), (95, 68781), (97, 68775), (105, 68760), (114, 68712), (127, 68586), (128, 68580), (130, 68574), (131, 68562), (140, 68520), (143, 68508), (147, 68469), (151, 68448), (162, 68376), (164, 68370), (166, 68364), (176, 68301), (182, 68262), (184, 68253), (189, 68241), (193, 68232), (202, 68184), (203, 68175), (204, 68172), (206, 68163), (212, 68103), (215, 68079), (216, 68073), (225, 68037), (231, 68013), (234, 67986), (241, 67962),

Gene: CaiB_80 Start: 59816, Stop: 58797, Start Num: 61

Candidate Starts for CaiB_80:

(Start: 26 @59972 has 1 MA's), (44, 59894), (56, 59858), (Start: 61 @59816 has 111 MA's), (76, 59720), (80, 59687), (82, 59663), (84, 59654), (94, 59630), (99, 59612), (107, 59591), (125, 59444), (127, 59420), (128, 59414), (131, 59396), (143, 59342), (146, 59306), (154, 59261), (162, 59210), (182, 59096), (204, 59006), (208, 58979), (209, 58973), (228, 58862),

Gene: CalWood4100_76 Start: 46704, Stop: 45700, Start Num: 64

Candidate Starts for CalWood4100_76:

(Start: 64 @46704 has 20 MA's), (76, 46629), (79, 46611), (125, 46353), (127, 46329), (177, 46047), (184, 46008), (185, 46005),

Gene: Calamitous_86 Start: 64789, Stop: 63719, Start Num: 61

Candidate Starts for Calamitous_86:

(Start: 61 @64789 has 111 MA's), (Start: 67 @64759 has 1 MA's), (76, 64693), (78, 64684), (80, 64660), (82, 64636), (88, 64612), (128, 64357), (130, 64351), (131, 64339), (139, 64306), (143, 64285), (150, 64228), (151, 64225), (158, 64186), (160, 64177), (164, 64147), (167, 64132), (170, 64114), (173, 64090), (177, 64069), (182, 64039), (189, 64018), (203, 63952), (204, 63949), (208, 63922), (209, 63916), (221, 63841), (226, 63805),

Gene: Casbah_97 Start: 67210, Stop: 66152, Start Num: 61

Candidate Starts for Casbah_97:

(24, 67384), (Start: 31 @67354 has 6 MA's), (Start: 52 @67264 has 15 MA's), (Start: 61 @67210 has 111 MA's), (Start: 67 @67180 has 1 MA's), (76, 67096), (80, 67063), (96, 66991), (114, 66919), (124, 66838), (127, 66793), (128, 66787), (130, 66781), (131, 66769), (139, 66733), (154, 66631), (158, 66613), (166, 66568), (177, 66496), (179, 66481), (185, 66454), (189, 66445), (201, 66388), (212, 66304), (215, 66280), (223, 66250),

Gene: ChaChing_97 Start: 67052, Stop: 65850, Start Num: 31

Candidate Starts for ChaChing_97:

(24, 67082), (Start: 31 @67052 has 6 MA's), (Start: 52 @66962 has 15 MA's), (Start: 61 @66908 has 111 MA's), (Start: 67 @66878 has 1 MA's), (76, 66794), (80, 66761), (96, 66689), (114, 66617), (124, 66536), (127, 66491), (128, 66485), (130, 66479), (131, 66467), (139, 66431), (154, 66329), (158, 66311), (166, 66266), (177, 66194), (179, 66179), (185, 66152), (189, 66143), (201, 66086), (212, 66002), (215, 65978), (223, 65948),

Gene: Chandler_97 Start: 67738, Stop: 66626, Start Num: 52

Candidate Starts for Chandler_97:

(24, 67858), (Start: 31 @67828 has 6 MA's), (Start: 52 @67738 has 15 MA's), (Start: 61 @67684 has 111 MA's), (Start: 67 @67654 has 1 MA's), (76, 67570), (80, 67537), (96, 67465), (114, 67393), (124, 67312), (127, 67267), (128, 67261), (130, 67255), (131, 67243), (139, 67207), (154, 67105), (158, 67087), (166, 67042), (177, 66970), (179, 66955), (185, 66928), (189, 66919), (201, 66862), (212, 66778), (215, 66754), (223, 66724),

Gene: CharlottesWeb_76 Start: 57928, Stop: 56921, Start Num: 61

Candidate Starts for CharlottesWeb_76:

(20, 58141), (25, 58096), (41, 58012), (44, 58006), (56, 57970), (Start: 61 @57928 has 111 MA's), (76, 57832), (80, 57799), (81, 57784), (96, 57733), (105, 57718), (125, 57568), (127, 57544), (128, 57538), (131, 57520), (143, 57466), (148, 57424), (149, 57415), (154, 57385), (162, 57334), (177, 57250), (200, 57151), (203, 57133), (204, 57130), (209, 57097), (212, 57061),

Gene: ChrisnMich_93 Start: 67523, Stop: 66477, Start Num: 61

Candidate Starts for ChrisnMich_93:

(50, 67580), (Start: 61 @67523 has 111 MA's), (71, 67451), (76, 67409), (80, 67376), (81, 67361), (82, 67352), (87, 67334), (101, 67295), (105, 67280), (106, 67277), (114, 67232), (122, 67169), (128,

67100), (130, 67094), (131, 67082), (135, 67064), (149, 66974), (151, 66965), (154, 66944), (160, 66917), (167, 66872), (174, 66827), (177, 66809), (179, 66794), (180, 66785), (182, 66779), (184, 66770), (193, 66749), (203, 66692), (208, 66662), (211, 66632), (212, 66620), (229, 66536), (232, 66515), (239, 66482),

Gene: Clawz_1 Start: 1, Stop: 1032, Start Num: 61

Candidate Starts for Clawz_1:

(Start: 61 @1 has 111 MA's), (76, 97), (82, 154), (94, 199), (126, 406), (128, 418), (130, 424), (141, 481), (147, 526), (177, 703), (184, 745), (186, 754), (189, 757), (194, 778),

Gene: CloverMinnie_79 Start: 59450, Stop: 58275, Start Num: 26

Candidate Starts for CloverMinnie_79:

(Start: 26 @59450 has 1 MA's), (44, 59372), (56, 59336), (Start: 61 @59294 has 111 MA's), (76, 59198), (80, 59165), (82, 59141), (84, 59132), (94, 59108), (99, 59090), (107, 59069), (125, 58922), (127, 58898), (128, 58892), (131, 58874), (143, 58820), (146, 58784), (154, 58739), (162, 58688), (182, 58574), (204, 58484), (208, 58457), (209, 58451), (228, 58340),

Gene: Coffee_84 Start: 64899, Stop: 63829, Start Num: 61

Candidate Starts for Coffee_84:

(Start: 61 @64899 has 111 MA's), (Start: 67 @64869 has 1 MA's), (76, 64803), (78, 64794), (80, 64770), (82, 64746), (88, 64722), (128, 64467), (130, 64461), (131, 64449), (139, 64416), (143, 64395), (150, 64338), (151, 64335), (158, 64296), (160, 64287), (164, 64257), (167, 64242), (170, 64224), (173, 64200), (177, 64179), (182, 64149), (189, 64128), (203, 64062), (204, 64059), (208, 64032), (209, 64026), (221, 63951), (226, 63915),

Gene: Compostia_96 Start: 67362, Stop: 66304, Start Num: 61

Candidate Starts for Compostia_96:

(24, 67536), (Start: 31 @67506 has 6 MA's), (Start: 52 @67416 has 15 MA's), (Start: 61 @67362 has 111 MA's), (Start: 67 @67332 has 1 MA's), (76, 67248), (80, 67215), (96, 67143), (114, 67071), (124, 66990), (127, 66945), (128, 66939), (130, 66933), (131, 66921), (139, 66885), (154, 66783), (158, 66765), (166, 66720), (177, 66648), (179, 66633), (185, 66606), (189, 66597), (201, 66540), (212, 66456), (215, 66432), (223, 66402),

Gene: Cooper_93 Start: 68069, Stop: 67017, Start Num: 61

Candidate Starts for Cooper_93:

(50, 68126), (Start: 61 @68069 has 111 MA's), (71, 67997), (76, 67955), (80, 67922), (81, 67907), (82, 67898), (87, 67880), (100, 67838), (101, 67835), (105, 67820), (106, 67817), (114, 67772), (122, 67709), (128, 67640), (130, 67634), (131, 67622), (135, 67604), (149, 67514), (151, 67505), (154, 67484), (160, 67457), (167, 67412), (174, 67367), (177, 67349), (179, 67334), (180, 67325), (182, 67319), (184, 67310), (193, 67289), (203, 67232), (208, 67202), (211, 67172), (212, 67160), (229, 67076), (232, 67055), (239, 67022),

Gene: Corofin_97 Start: 66919, Stop: 65861, Start Num: 61

Candidate Starts for Corofin_97:

(24, 67093), (Start: 31 @67063 has 6 MA's), (Start: 52 @66973 has 15 MA's), (Start: 61 @66919 has 111 MA's), (Start: 67 @66889 has 1 MA's), (76, 66805), (80, 66772), (96, 66700), (114, 66628), (124, 66547), (127, 66502), (128, 66496), (130, 66490), (131, 66478), (133, 66472), (139, 66442), (154, 66340), (158, 66322), (166, 66277), (177, 66205), (179, 66190), (185, 66163), (189, 66154), (201, 66097), (212, 66013), (215, 65989), (223, 65959),

Gene: Daisy_96 Start: 66522, Stop: 65410, Start Num: 52

Candidate Starts for Daisy_96:

(24, 66642), (Start: 31 @66612 has 6 MA's), (Start: 52 @66522 has 15 MA's), (Start: 61 @66468 has 111 MA's), (Start: 67 @66438 has 1 MA's), (76, 66354), (80, 66321), (96, 66249), (114, 66177), (124, 66096), (127, 66051), (128, 66045), (130, 66039), (131, 66027), (139, 65991), (154, 65889), (158, 65871), (166, 65826), (177, 65754), (179, 65739), (185, 65712), (189, 65703), (201, 65646), (212, 65562), (215, 65538), (223, 65508),

Gene: Deenasa_98 Start: 68122, Stop: 67064, Start Num: 61

Candidate Starts for Deenasa_98:

(24, 68296), (Start: 31 @68266 has 6 MA's), (Start: 52 @68176 has 15 MA's), (Start: 61 @68122 has 111 MA's), (Start: 67 @68092 has 1 MA's), (76, 68008), (80, 67975), (96, 67903), (114, 67831), (124, 67750), (127, 67705), (128, 67699), (130, 67693), (131, 67681), (133, 67675), (139, 67645), (154, 67543), (158, 67525), (166, 67480), (177, 67408), (179, 67393), (185, 67366), (189, 67357), (201, 67300), (212, 67216), (215, 67192), (223, 67162),

Gene: Devonte_95 Start: 66534, Stop: 65476, Start Num: 61

Candidate Starts for Devonte_95:

(24, 66708), (Start: 31 @66678 has 6 MA's), (Start: 52 @66588 has 15 MA's), (Start: 61 @66534 has 111 MA's), (Start: 67 @66504 has 1 MA's), (76, 66420), (80, 66387), (96, 66315), (114, 66243), (124, 66162), (127, 66117), (128, 66111), (130, 66105), (131, 66093), (139, 66057), (154, 65955), (158, 65937), (166, 65892), (177, 65820), (179, 65805), (185, 65778), (189, 65769), (201, 65712), (212, 65628), (215, 65604), (223, 65574),

Gene: DigitDog_92 Start: 67609, Stop: 66536, Start Num: 61

Candidate Starts for DigitDog_92:

(13, 67918), (22, 67804), (27, 67762), (Start: 61 @67609 has 111 MA's), (76, 67513), (80, 67480), (92, 67438), (99, 67408), (108, 67366), (109, 67357), (128, 67207), (130, 67201), (143, 67135), (151, 67075), (167, 66982), (168, 66973), (172, 66943), (176, 66928), (180, 66895), (182, 66889), (184, 66880), (189, 66868), (204, 66799), (205, 66793), (206, 66790), (215, 66706), (216, 66700), (225, 66661), (243, 66571), (244, 66568), (245, 66553),

Gene: DonTron_1 Start: 1, Stop: 1032, Start Num: 61

Candidate Starts for DonTron_1:

(Start: 61 @1 has 111 MA's), (76, 97), (94, 199), (126, 406), (128, 418), (130, 424), (141, 481), (147, 526), (151, 547), (158, 586), (177, 703), (179, 718), (186, 754), (189, 757),

Gene: Donny_90 Start: 66942, Stop: 65869, Start Num: 61

Candidate Starts for Donny_90:

(27, 67095), (Start: 61 @66942 has 111 MA's), (76, 66846), (80, 66813), (92, 66771), (109, 66690), (128, 66540), (130, 66534), (143, 66468), (167, 66315), (172, 66276), (176, 66261), (182, 66225), (184, 66216), (189, 66204), (193, 66195), (204, 66135), (206, 66126), (215, 66042), (216, 66036), (231, 65973), (241, 65922), (243, 65907), (245, 65889),

Gene: Dropshot_50 Start: 30656, Stop: 31708, Start Num: 57

Candidate Starts for Dropshot_50:

(Start: 57 @30656 has 6 MA's), (Start: 61 @30698 has 111 MA's), (76, 30794), (81, 30842), (108, 30932), (128, 31091), (130, 31097), (132, 31112), (148, 31193), (177, 31367), (202, 31475), (220, 31595), (228, 31637), (240, 31697),

Gene: Eaglehorse_86 Start: 64784, Stop: 63714, Start Num: 61

Candidate Starts for Eaglehorse_86:

(Start: 61 @64784 has 111 MA's), (Start: 67 @64754 has 1 MA's), (76, 64688), (78, 64679), (80, 64655), (82, 64631), (88, 64607), (128, 64352), (130, 64346), (131, 64334), (139, 64301), (143, 64280), (150, 64223), (151, 64220), (158, 64181), (160, 64172), (164, 64142), (167, 64127), (173,

64085), (177, 64064), (182, 64034), (189, 64013), (203, 63947), (204, 63944), (208, 63917), (209, 63911), (221, 63836), (226, 63800),

Gene: EastView9101_92 Start: 67134, Stop: 66061, Start Num: 61

Candidate Starts for EastView9101_92:

(27, 67287), (Start: 61 @67134 has 111 MA's), (76, 67038), (80, 67005), (92, 66963), (109, 66882), (128, 66732), (130, 66726), (143, 66660), (161, 66546), (167, 66507), (172, 66468), (176, 66453), (182, 66417), (184, 66408), (189, 66396), (193, 66387), (204, 66327), (206, 66318), (215, 66234), (216, 66228), (231, 66165), (243, 66099), (245, 66081),

Gene: EastWest_82 Start: 49764, Stop: 48769, Start Num: 64

Candidate Starts for EastWest_82:

(Start: 64 @49764 has 20 MA's), (79, 49671), (88, 49608), (95, 49590), (102, 49575), (125, 49410), (128, 49380), (131, 49362), (148, 49278), (155, 49236), (156, 49233), (161, 49206), (189, 49053), (196, 49020), (227, 48837),

Gene: Evaa_80 Start: 59121, Stop: 58117, Start Num: 61

Candidate Starts for Evaa_80:

(Start: 61 @59121 has 111 MA's), (68, 59088), (76, 59025), (80, 58992), (82, 58968), (84, 58959), (96, 58929), (106, 58911), (107, 58908), (108, 58893), (114, 58866), (128, 58734), (130, 58728), (135, 58698), (150, 58602), (154, 58578), (160, 58551), (178, 58440), (179, 58428), (185, 58401), (214, 58233), (215, 58230),

Gene: Faze9_84 Start: 64921, Stop: 63851, Start Num: 61

Candidate Starts for Faze9_84:

(Start: 61 @64921 has 111 MA's), (Start: 67 @64891 has 1 MA's), (76, 64825), (78, 64816), (80, 64792), (82, 64768), (88, 64744), (128, 64489), (130, 64483), (131, 64471), (139, 64438), (143, 64417), (150, 64360), (151, 64357), (158, 64318), (160, 64309), (164, 64279), (167, 64264), (170, 64246), (173, 64222), (177, 64201), (182, 64171), (189, 64150), (203, 64084), (204, 64081), (208, 64054), (209, 64048), (221, 63973), (226, 63937),

Gene: Fortunato_89 Start: 68261, Stop: 67203, Start Num: 61

Candidate Starts for Fortunato_89:

(Start: 61 @68261 has 111 MA's), (70, 68207), (76, 68147), (77, 68141), (80, 68114), (81, 68099), (82, 68090), (87, 68072), (101, 68033), (106, 68015), (114, 67970), (122, 67907), (128, 67838), (131, 67820), (135, 67802), (139, 67784), (149, 67712), (151, 67703), (154, 67682), (174, 67565), (176, 67556), (179, 67532), (180, 67523), (184, 67508), (193, 67487), (203, 67430), (208, 67400), (211, 67370), (212, 67358), (214, 67337), (229, 67262), (232, 67241), (237, 67214), (239, 67208),

Gene: Franzy_71 Start: 49640, Stop: 48591, Start Num: 58

Candidate Starts for Franzy_71:

(Start: 58 @49640 has 2 MA's), (Start: 64 @49595 has 20 MA's), (96, 49415), (102, 49397), (110, 49352), (112, 49343), (116, 49316), (125, 49232), (127, 49208), (128, 49202), (131, 49184), (156, 49055), (177, 48926), (179, 48911), (218, 48704), (227, 48659), (237, 48605),

Gene: Frederick_90 Start: 68766, Stop: 67708, Start Num: 61

Candidate Starts for Frederick_90:

(Start: 61 @68766 has 111 MA's), (70, 68712), (71, 68694), (76, 68652), (77, 68646), (80, 68619), (81, 68604), (82, 68595), (87, 68577), (101, 68538), (106, 68520), (114, 68475), (122, 68412), (128, 68343), (131, 68325), (135, 68307), (139, 68289), (149, 68217), (151, 68208), (154, 68187), (174, 68070), (176, 68061), (179, 68037), (180, 68028), (184, 68013), (193, 67992), (203, 67935), (208, 67905), (211, 67875), (212, 67863), (214, 67842), (229, 67767), (232, 67746), (239, 67713),

Gene: FrenchFry_86 Start: 64908, Stop: 63838, Start Num: 61

Candidate Starts for FrenchFry_86:

(Start: 61 @64908 has 111 MA's), (Start: 67 @64878 has 1 MA's), (76, 64812), (78, 64803), (80, 64779), (82, 64755), (88, 64731), (128, 64476), (130, 64470), (131, 64458), (139, 64425), (143, 64404), (150, 64347), (151, 64344), (158, 64305), (160, 64296), (164, 64266), (167, 64251), (170, 64233), (173, 64209), (177, 64188), (182, 64158), (189, 64137), (203, 64071), (204, 64068), (208, 64041), (209, 64035), (221, 63960), (226, 63924),

Gene: Fresco_80 Start: 59322, Stop: 58315, Start Num: 61

Candidate Starts for Fresco_80:

(Start: 61 @59322 has 111 MA's), (76, 59226), (80, 59193), (81, 59178), (96, 59127), (105, 59112), (127, 58938), (128, 58932), (131, 58914), (143, 58860), (148, 58818), (149, 58809), (154, 58779), (162, 58728), (200, 58545), (203, 58527), (204, 58524), (209, 58491), (212, 58455), (235, 58332),

Gene: Funsized_89 Start: 69514, Stop: 68426, Start Num: 61

Candidate Starts for Funsized_89:

(Start: 52 @69568 has 15 MA's), (Start: 61 @69514 has 111 MA's), (76, 69418), (80, 69385), (84, 69352), (94, 69304), (95, 69298), (97, 69292), (101, 69280), (103, 69268), (115, 69202), (120, 69151), (128, 69073), (130, 69067), (133, 69049), (143, 69001), (151, 68941), (158, 68902), (160, 68893), (161, 68887), (162, 68869), (172, 68809), (176, 68794), (182, 68755), (189, 68734), (202, 68677), (204, 68665), (205, 68659), (206, 68656), (213, 68584), (215, 68572),

Gene: Gadget_96 Start: 66316, Stop: 65114, Start Num: 31

Candidate Starts for Gadget_96:

(24, 66346), (Start: 31 @66316 has 6 MA's), (Start: 52 @66226 has 15 MA's), (Start: 61 @66172 has 111 MA's), (Start: 67 @66142 has 1 MA's), (76, 66058), (80, 66025), (96, 65953), (114, 65881), (124, 65800), (127, 65755), (128, 65749), (130, 65743), (131, 65731), (139, 65695), (154, 65593), (158, 65575), (166, 65530), (177, 65458), (179, 65443), (185, 65416), (189, 65407), (201, 65350), (212, 65266), (215, 65242), (223, 65212),

Gene: Gervas_98 Start: 67363, Stop: 66305, Start Num: 61

Candidate Starts for Gervas_98:

(24, 67537), (Start: 31 @67507 has 6 MA's), (Start: 52 @67417 has 15 MA's), (Start: 61 @67363 has 111 MA's), (Start: 67 @67333 has 1 MA's), (76, 67249), (80, 67216), (96, 67144), (114, 67072), (124, 66991), (127, 66946), (128, 66940), (130, 66934), (131, 66922), (139, 66886), (154, 66784), (158, 66766), (166, 66721), (177, 66649), (179, 66634), (185, 66607), (189, 66598), (201, 66541), (212, 66457), (215, 66433), (223, 66403),

Gene: Glass_87 Start: 64915, Stop: 63845, Start Num: 61

Candidate Starts for Glass_87:

(Start: 61 @64915 has 111 MA's), (Start: 67 @64885 has 1 MA's), (76, 64819), (78, 64810), (80, 64786), (82, 64762), (88, 64738), (128, 64483), (130, 64477), (131, 64465), (139, 64432), (143, 64411), (150, 64354), (151, 64351), (158, 64312), (160, 64303), (164, 64273), (167, 64258), (173, 64216), (177, 64195), (182, 64165), (189, 64144), (203, 64078), (204, 64075), (208, 64048), (209, 64042), (221, 63967), (226, 63931),

Gene: GlenHope_98 Start: 66938, Stop: 65880, Start Num: 61

Candidate Starts for GlenHope_98:

(24, 67112), (Start: 31 @67082 has 6 MA's), (Start: 52 @66992 has 15 MA's), (Start: 61 @66938 has 111 MA's), (Start: 67 @66908 has 1 MA's), (76, 66824), (80, 66791), (96, 66719), (111, 66662), (114, 66647), (124, 66566), (127, 66521), (128, 66515), (130, 66509), (131, 66497), (139, 66461), (154, 66359), (158, 66341), (166, 66296), (177, 66224), (179, 66209), (185, 66182), (189, 66173), (201, 66116), (212, 66032), (215, 66008), (223, 65978),

Gene: Godines_85 Start: 64821, Stop: 63751, Start Num: 61

Candidate Starts for Godines_85:

(23, 65016), (Start: 61 @64821 has 111 MA's), (Start: 67 @64791 has 1 MA's), (76, 64725), (78, 64716), (80, 64692), (82, 64668), (88, 64644), (128, 64389), (130, 64383), (131, 64371), (139, 64338), (143, 64317), (150, 64260), (151, 64257), (158, 64218), (160, 64209), (164, 64179), (167, 64164), (170, 64146), (173, 64122), (177, 64101), (182, 64071), (189, 64050), (203, 63984), (204, 63981), (208, 63954), (209, 63948), (221, 63873), (226, 63837),

Gene: GravityBall_77 Start: 50741, Stop: 49743, Start Num: 64

Candidate Starts for GravityBall_77:

(Start: 62 @50747 has 2 MA's), (Start: 64 @50741 has 20 MA's), (79, 50645), (88, 50582), (95, 50564), (125, 50384), (127, 50360), (128, 50354), (131, 50336), (132, 50333), (146, 50258), (156, 50207), (179, 50063), (189, 50027), (196, 49994), (227, 49811), (236, 49760),

Gene: Grekaycon_77 Start: 50613, Stop: 49618, Start Num: 64

Candidate Starts for Grekaycon_77:

(Start: 64 @50613 has 20 MA's), (79, 50520), (88, 50457), (95, 50439), (125, 50259), (127, 50235), (128, 50229), (131, 50211), (132, 50208), (146, 50133), (156, 50082), (177, 49953), (179, 49938), (189, 49902), (196, 49869), (227, 49686),

Gene: Halfpint_97 Start: 66683, Stop: 65625, Start Num: 61

Candidate Starts for Halfpint_97:

(24, 66857), (Start: 31 @66827 has 6 MA's), (Start: 52 @66737 has 15 MA's), (Start: 61 @66683 has 111 MA's), (Start: 67 @66653 has 1 MA's), (76, 66569), (80, 66536), (96, 66464), (114, 66392), (124, 66311), (127, 66266), (128, 66260), (130, 66254), (131, 66242), (139, 66206), (154, 66104), (158, 66086), (166, 66041), (177, 65969), (179, 65954), (185, 65927), (189, 65918), (201, 65861), (212, 65777), (215, 65753), (223, 65723),

Gene: Hangman_92 Start: 69061, Stop: 68003, Start Num: 61

Candidate Starts for Hangman_92:

(Start: 61 @69061 has 111 MA's), (70, 69007), (76, 68947), (77, 68941), (80, 68914), (81, 68899), (82, 68890), (87, 68872), (101, 68833), (106, 68815), (107, 68812), (114, 68770), (122, 68707), (128, 68638), (131, 68620), (135, 68602), (139, 68584), (149, 68512), (151, 68503), (154, 68482), (174, 68365), (176, 68356), (179, 68332), (180, 68323), (184, 68308), (193, 68287), (203, 68230), (208, 68200), (211, 68170), (212, 68158), (214, 68137), (229, 68062), (232, 68041), (237, 68014), (239, 68008),

Gene: HarveySr_94 Start: 66061, Stop: 64949, Start Num: 52

Candidate Starts for HarveySr_94:

(24, 66181), (Start: 31 @66151 has 6 MA's), (Start: 52 @66061 has 15 MA's), (Start: 61 @66007 has 111 MA's), (Start: 67 @65977 has 1 MA's), (76, 65893), (80, 65860), (96, 65788), (114, 65716), (124, 65635), (127, 65590), (128, 65584), (130, 65578), (131, 65566), (133, 65560), (139, 65530), (154, 65428), (158, 65410), (166, 65365), (177, 65293), (179, 65278), (185, 65251), (189, 65242), (201, 65185), (212, 65101), (215, 65077), (223, 65047),

Gene: Heath_86 Start: 66831, Stop: 65773, Start Num: 61

Candidate Starts for Heath_86:

(Start: 61 @66831 has 111 MA's), (70, 66777), (71, 66759), (76, 66717), (77, 66711), (80, 66684), (81, 66669), (82, 66660), (87, 66642), (101, 66603), (106, 66585), (114, 66540), (122, 66477), (128, 66408), (131, 66390), (135, 66372), (139, 66354), (149, 66282), (151, 66273), (154, 66252), (174, 66135), (176, 66126), (179, 66102), (180, 66093), (184, 66078), (193, 66057), (203, 66000), (208, 65970), (211, 65940), (212, 65928), (214, 65907), (229, 65832), (232, 65811), (239, 65778),

Gene: Heathcliff_97 Start: 66916, Stop: 65804, Start Num: 52

Candidate Starts for Heathcliff_97:

(24, 67036), (Start: 31 @67006 has 6 MA's), (Start: 52 @66916 has 15 MA's), (Start: 61 @66862 has 111 MA's), (Start: 67 @66832 has 1 MA's), (76, 66748), (80, 66715), (96, 66643), (114, 66571), (124, 66490), (127, 66445), (128, 66439), (130, 66433), (131, 66421), (139, 66385), (154, 66283), (158, 66265), (166, 66220), (177, 66148), (179, 66133), (185, 66106), (189, 66097), (201, 66040), (212, 65956), (215, 65932), (223, 65902),

Gene: Hedgerow_85 Start: 64872, Stop: 63802, Start Num: 61

Candidate Starts for Hedgerow_85:

(Start: 61 @64872 has 111 MA's), (Start: 67 @64842 has 1 MA's), (76, 64776), (78, 64767), (80, 64743), (82, 64719), (88, 64695), (128, 64440), (130, 64434), (131, 64422), (139, 64389), (143, 64368), (150, 64311), (151, 64308), (158, 64269), (160, 64260), (164, 64230), (167, 64215), (170, 64197), (173, 64173), (177, 64152), (182, 64122), (189, 64101), (203, 64035), (204, 64032), (208, 64005), (209, 63999), (221, 63924), (226, 63888),

Gene: Holeinone_85 Start: 64762, Stop: 63692, Start Num: 61

Candidate Starts for Holeinone_85:

(23, 64957), (Start: 61 @64762 has 111 MA's), (Start: 67 @64732 has 1 MA's), (76, 64666), (78, 64657), (80, 64633), (82, 64609), (88, 64585), (108, 64489), (128, 64330), (130, 64324), (131, 64312), (139, 64279), (143, 64258), (150, 64201), (151, 64198), (158, 64159), (160, 64150), (164, 64120), (167, 64105), (170, 64087), (173, 64063), (177, 64042), (182, 64012), (189, 63991), (203, 63925), (204, 63922), (208, 63895), (209, 63889), (221, 63814), (226, 63778),

Gene: Hosp_090 Start: 66775, Stop: 65738, Start Num: 61

Candidate Starts for Hosp_090:

(43, 66856), (Start: 61 @66775 has 111 MA's), (Start: 67 @66745 has 1 MA's), (71, 66703), (76, 66661), (80, 66628), (84, 66595), (96, 66574), (101, 66565), (114, 66502), (128, 66370), (130, 66364), (131, 66352), (149, 66244), (151, 66235), (154, 66214), (160, 66187), (179, 66064), (182, 66049), (208, 65932), (214, 65869), (229, 65797),

Gene: Hydro_92 Start: 68848, Stop: 67790, Start Num: 61

Candidate Starts for Hydro_92:

(Start: 61 @68848 has 111 MA's), (70, 68794), (76, 68734), (77, 68728), (80, 68701), (81, 68686), (82, 68677), (87, 68659), (101, 68620), (106, 68602), (107, 68599), (114, 68557), (122, 68494), (128, 68425), (131, 68407), (135, 68389), (139, 68371), (149, 68299), (151, 68290), (154, 68269), (174, 68152), (176, 68143), (179, 68119), (180, 68110), (193, 68074), (203, 68017), (208, 67987), (211, 67957), (212, 67945), (214, 67924), (229, 67849), (232, 67828), (239, 67795),

Gene: Indlovu_89 Start: 68368, Stop: 67307, Start Num: 61

Candidate Starts for Indlovu_89:

(Start: 61 @68368 has 111 MA's), (76, 68242), (77, 68236), (80, 68209), (84, 68176), (87, 68167), (99, 68137), (128, 67936), (130, 67930), (131, 67918), (133, 67912), (143, 67864), (150, 67807), (154, 67783), (160, 67756), (161, 67750), (166, 67720), (167, 67711), (169, 67699), (183, 67615), (203, 67531), (204, 67528), (229, 67366), (232, 67345), (236, 67321), (237, 67318),

Gene: ItsyBitsy1_82 Start: 64989, Stop: 63919, Start Num: 61

Candidate Starts for ItsyBitsy1_82:

(23, 65184), (Start: 61 @64989 has 111 MA's), (Start: 67 @64959 has 1 MA's), (76, 64893), (78, 64884), (80, 64860), (88, 64812), (128, 64557), (130, 64551), (131, 64539), (139, 64506), (143, 64485), (150, 64428), (151, 64425), (158, 64386), (160, 64377), (164, 64347), (167, 64332), (170, 64314), (173, 64290), (177, 64269), (182, 64239), (189, 64218), (203, 64152), (204, 64149), (208,

64122), (209, 64116), (221, 64041), (226, 64005),

Gene: JAMaL_92 Start: 68380, Stop: 67322, Start Num: 61

Candidate Starts for JAMaL_92:

(Start: 61 @68380 has 111 MA's), (70, 68326), (71, 68308), (76, 68266), (80, 68233), (81, 68218), (82, 68209), (87, 68191), (99, 68158), (101, 68152), (106, 68134), (107, 68131), (114, 68089), (122, 68026), (128, 67957), (131, 67939), (135, 67921), (139, 67903), (149, 67831), (151, 67822), (154, 67801), (174, 67684), (176, 67675), (179, 67651), (180, 67642), (184, 67627), (193, 67606), (203, 67549), (208, 67519), (211, 67489), (212, 67477), (214, 67456), (229, 67381), (232, 67360), (239, 67327),

Gene: JKerns_75 Start: 50196, Stop: 49201, Start Num: 64

Candidate Starts for JKerns_75:

(Start: 64 @50196 has 20 MA's), (79, 50103), (88, 50040), (95, 50022), (121, 49887), (125, 49842), (127, 49818), (128, 49812), (131, 49794), (132, 49791), (146, 49716), (156, 49665), (177, 49536), (179, 49521), (189, 49485), (196, 49452), (227, 49269),

Gene: Jace_91 Start: 51481, Stop: 50453, Start Num: 61

Candidate Starts for Jace_91:

(1, 51994), (2, 51988), (3, 51958), (4, 51949), (5, 51934), (6, 51907), (7, 51901), (8, 51898), (9, 51868), (10, 51841), (12, 51814), (15, 51781), (16, 51754), (17, 51748), (18, 51742), (19, 51733), (Start: 26 @51649 has 1 MA's), (29, 51640), (42, 51574), (47, 51556), (49, 51550), (Start: 61 @51481 has 111 MA's), (75, 51388), (76, 51385), (87, 51310), (98, 51268), (101, 51259), (114, 51196), (127, 51070), (128, 51064), (165, 50854), (171, 50809), (177, 50779), (179, 50764), (182, 50749), (204, 50659), (207, 50644), (215, 50566), (216, 50560),

Gene: Jackstina_90 Start: 66779, Stop: 65721, Start Num: 61

Candidate Starts for Jackstina_90:

(24, 66953), (Start: 31 @66923 has 6 MA's), (Start: 52 @66833 has 15 MA's), (Start: 61 @66779 has 111 MA's), (Start: 67 @66749 has 1 MA's), (76, 66665), (80, 66632), (96, 66560), (114, 66488), (124, 66407), (127, 66362), (128, 66356), (130, 66350), (131, 66338), (139, 66302), (154, 66200), (158, 66182), (166, 66137), (177, 66065), (179, 66050), (185, 66023), (189, 66014), (201, 65957), (212, 65873), (215, 65849), (223, 65819),

Gene: JaguarMi_86 Start: 68822, Stop: 67764, Start Num: 61

Candidate Starts for JaguarMi_86:

(Start: 61 @68822 has 111 MA's), (70, 68768), (72, 68732), (76, 68708), (77, 68702), (80, 68675), (81, 68660), (82, 68651), (87, 68633), (101, 68594), (106, 68576), (107, 68573), (114, 68531), (122, 68468), (128, 68399), (131, 68381), (135, 68363), (139, 68345), (149, 68273), (151, 68264), (154, 68243), (174, 68126), (176, 68117), (179, 68093), (180, 68084), (184, 68069), (193, 68048), (203, 67991), (208, 67961), (211, 67931), (212, 67919), (214, 67898), (229, 67823), (232, 67802), (237, 67775), (239, 67769),

Gene: Jawnski_72 Start: 49083, Stop: 48034, Start Num: 58

Candidate Starts for Jawnski_72:

(Start: 58 @49083 has 2 MA's), (Start: 64 @49038 has 20 MA's), (96, 48858), (102, 48840), (110, 48795), (112, 48786), (116, 48759), (125, 48675), (127, 48651), (128, 48645), (131, 48627), (156, 48498), (177, 48369), (179, 48354), (196, 48285), (218, 48147), (227, 48102), (237, 48048),

Gene: Jolie1_092 Start: 68844, Stop: 67807, Start Num: 61

Candidate Starts for Jolie1_092:

(43, 68925), (Start: 61 @68844 has 111 MA's), (Start: 67 @68814 has 1 MA's), (71, 68772), (76, 68730), (80, 68697), (84, 68664), (96, 68643), (114, 68571), (128, 68439), (130, 68433), (131, 68421),

(149, 68313), (151, 68304), (154, 68283), (159, 68259), (160, 68256), (167, 68211), (179, 68133), (208, 68001), (214, 67938), (229, 67866),

Gene: Jordan_77 Start: 50754, Stop: 49759, Start Num: 64

Candidate Starts for Jordan_77:

(Start: 64 @50754 has 20 MA's), (79, 50661), (88, 50598), (95, 50580), (121, 50445), (125, 50400), (127, 50376), (128, 50370), (131, 50352), (132, 50349), (146, 50274), (156, 50223), (177, 50094), (179, 50079), (189, 50043), (196, 50010), (227, 49827),

Gene: Kaleb_85 Start: 64918, Stop: 63848, Start Num: 61

Candidate Starts for Kaleb_85:

(Start: 61 @64918 has 111 MA's), (Start: 67 @64888 has 1 MA's), (76, 64822), (78, 64813), (80, 64789), (82, 64765), (88, 64741), (128, 64486), (130, 64480), (131, 64468), (139, 64435), (143, 64414), (150, 64357), (151, 64354), (158, 64315), (160, 64306), (164, 64276), (167, 64261), (170, 64243), (173, 64219), (177, 64198), (182, 64168), (189, 64147), (203, 64081), (204, 64078), (208, 64051), (209, 64045), (221, 63970), (226, 63934),

Gene: Kamiyu_97 Start: 66920, Stop: 65808, Start Num: 52

Candidate Starts for Kamiyu_97:

(24, 67040), (Start: 31 @67010 has 6 MA's), (Start: 52 @66920 has 15 MA's), (Start: 61 @66866 has 111 MA's), (Start: 67 @66836 has 1 MA's), (76, 66752), (80, 66719), (96, 66647), (114, 66575), (124, 66494), (127, 66449), (128, 66443), (130, 66437), (131, 66425), (139, 66389), (154, 66287), (158, 66269), (166, 66224), (177, 66152), (179, 66137), (185, 66110), (189, 66101), (201, 66044), (212, 65960), (215, 65936), (223, 65906),

Gene: KayaCho_90 Start: 68660, Stop: 67599, Start Num: 61

Candidate Starts for KayaCho_90:

(43, 68741), (Start: 61 @68660 has 111 MA's), (Start: 67 @68630 has 1 MA's), (76, 68546), (80, 68513), (82, 68489), (87, 68471), (93, 68453), (106, 68408), (107, 68405), (114, 68363), (122, 68300), (128, 68231), (130, 68225), (131, 68213), (149, 68105), (151, 68096), (154, 68075), (160, 68048), (167, 68003), (174, 67958), (179, 67925), (208, 67793), (214, 67730), (229, 67658),

Gene: Kheth_85 Start: 64824, Stop: 63754, Start Num: 61

Candidate Starts for Kheth_85:

(Start: 61 @64824 has 111 MA's), (Start: 67 @64794 has 1 MA's), (76, 64728), (78, 64719), (80, 64695), (82, 64671), (128, 64392), (130, 64386), (131, 64374), (139, 64341), (143, 64320), (150, 64263), (151, 64260), (158, 64221), (160, 64212), (164, 64182), (167, 64167), (170, 64149), (173, 64125), (177, 64104), (182, 64074), (189, 64053), (203, 63987), (204, 63984), (208, 63957), (209, 63951), (221, 63876), (226, 63840),

Gene: King2_72 Start: 49965, Stop: 48961, Start Num: 64

Candidate Starts for King2_72:

(Start: 58 @50010 has 2 MA's), (Start: 64 @49965 has 20 MA's), (96, 49785), (102, 49767), (110, 49722), (112, 49713), (116, 49686), (125, 49602), (127, 49578), (128, 49572), (131, 49554), (156, 49425), (177, 49296), (179, 49281), (218, 49074), (227, 49029), (237, 48975),

Gene: Klevey_76 Start: 46572, Stop: 45574, Start Num: 65

Candidate Starts for Klevey_76:

(14, 46890), (32, 46722), (Start: 58 @46623 has 2 MA's), (Start: 65 @46572 has 4 MA's), (76, 46503), (79, 46485), (125, 46227), (126, 46209), (127, 46203), (177, 45921), (184, 45882), (185, 45879),

Gene: Knocker_89 Start: 68373, Stop: 67315, Start Num: 61

Candidate Starts for Knocker_89:

(Start: 52 @68424 has 15 MA's), (Start: 61 @68373 has 111 MA's), (76, 68277), (79, 68259), (80, 68244), (89, 68202), (92, 68190), (95, 68172), (97, 68166), (105, 68151), (115, 68100), (119, 68055), (120, 68049), (127, 67977), (128, 67971), (130, 67965), (133, 67947), (143, 67902), (149, 67851), (151, 67842), (154, 67821), (158, 67803), (160, 67794), (161, 67788), (162, 67770), (167, 67749), (168, 67740), (176, 67695), (180, 67662), (182, 67656), (189, 67635), (202, 67578), (203, 67569), (204, 67566), (205, 67560), (206, 67557), (213, 67485), (215, 67473), (228, 67419), (243, 67338),

Gene: Kronus_97 Start: 67951, Stop: 66893, Start Num: 61

Candidate Starts for Kronus_97:

(24, 68125), (Start: 31 @68095 has 6 MA's), (Start: 52 @68005 has 15 MA's), (Start: 61 @67951 has 111 MA's), (Start: 67 @67921 has 1 MA's), (76, 67837), (80, 67804), (96, 67732), (114, 67660), (124, 67579), (127, 67534), (128, 67528), (130, 67522), (131, 67510), (139, 67474), (154, 67372), (158, 67354), (166, 67309), (177, 67237), (179, 67222), (185, 67195), (189, 67186), (201, 67129), (212, 67045), (215, 67021), (223, 66991),

Gene: Lars_86 Start: 64888, Stop: 63818, Start Num: 61

Candidate Starts for Lars_86:

(Start: 61 @64888 has 111 MA's), (Start: 67 @64858 has 1 MA's), (76, 64792), (78, 64783), (80, 64759), (82, 64735), (88, 64711), (128, 64456), (130, 64450), (131, 64438), (139, 64405), (143, 64384), (150, 64327), (151, 64324), (158, 64285), (160, 64276), (164, 64246), (167, 64231), (173, 64189), (177, 64168), (182, 64138), (189, 64117), (203, 64051), (204, 64048), (208, 64021), (209, 64015), (221, 63940), (226, 63904),

Gene: Laurie_84 Start: 64232, Stop: 63162, Start Num: 61

Candidate Starts for Laurie_84:

(Start: 61 @64232 has 111 MA's), (Start: 67 @64202 has 1 MA's), (76, 64136), (78, 64127), (80, 64103), (82, 64079), (88, 64055), (94, 64028), (108, 63959), (128, 63800), (130, 63794), (131, 63782), (139, 63749), (143, 63728), (150, 63671), (151, 63668), (158, 63629), (160, 63620), (164, 63590), (167, 63575), (170, 63557), (173, 63533), (177, 63512), (182, 63482), (189, 63461), (203, 63395), (204, 63392), (208, 63365), (209, 63359), (221, 63284), (226, 63248),

Gene: LeeroyJ_78 Start: 50672, Stop: 49668, Start Num: 62

Candidate Starts for LeeroyJ_78:

(Start: 62 @50672 has 2 MA's), (Start: 64 @50666 has 20 MA's), (79, 50570), (88, 50507), (95, 50489), (125, 50309), (127, 50285), (128, 50279), (131, 50261), (132, 50258), (146, 50183), (156, 50132), (179, 49988), (189, 49952), (196, 49919), (227, 49736), (236, 49685),

Gene: Lephleur_85 Start: 64743, Stop: 63673, Start Num: 61

Candidate Starts for Lephleur_85:

(Start: 61 @64743 has 111 MA's), (Start: 67 @64713 has 1 MA's), (76, 64647), (78, 64638), (80, 64614), (82, 64590), (88, 64566), (128, 64311), (130, 64305), (131, 64293), (139, 64260), (143, 64239), (150, 64182), (151, 64179), (158, 64140), (160, 64131), (164, 64101), (167, 64086), (170, 64068), (173, 64044), (177, 64023), (182, 63993), (189, 63972), (203, 63906), (204, 63903), (208, 63876), (209, 63870), (221, 63795), (226, 63759),

Gene: LestyG_95 Start: 66491, Stop: 65379, Start Num: 52

Candidate Starts for LestyG_95:

(24, 66611), (Start: 31 @66581 has 6 MA's), (Start: 52 @66491 has 15 MA's), (Start: 61 @66437 has 111 MA's), (Start: 67 @66407 has 1 MA's), (76, 66323), (80, 66290), (96, 66218), (114, 66146), (124, 66065), (127, 66020), (128, 66014), (130, 66008), (131, 65996), (139, 65960), (154, 65858), (158, 65840), (166, 65795), (177, 65723), (179, 65708), (185, 65681), (189, 65672), (201, 65615), (212, 65531), (215, 65507), (223, 65477),

Gene: Ligma_80 Start: 59316, Stop: 58309, Start Num: 61

Candidate Starts for Ligma_80:

(Start: 61 @59316 has 111 MA's), (76, 59220), (80, 59187), (81, 59172), (96, 59121), (105, 59106), (127, 58932), (128, 58926), (131, 58908), (143, 58854), (148, 58812), (149, 58803), (154, 58773), (162, 58722), (200, 58539), (203, 58521), (204, 58518), (209, 58485), (212, 58449), (235, 58326),

Gene: LilMcDreamy_90 Start: 68177, Stop: 67116, Start Num: 61

Candidate Starts for LilMcDreamy_90:

(Start: 61 @68177 has 111 MA's), (76, 68081), (80, 68048), (106, 67952), (109, 67925), (114, 67907), (128, 67775), (130, 67769), (148, 67658), (151, 67640), (160, 67592), (167, 67547), (176, 67493), (182, 67454), (184, 67445), (195, 67400), (203, 67367), (204, 67364), (212, 67295), (215, 67271), (216, 67265), (225, 67229), (240, 67160), (241, 67154),

Gene: Lilbeanie_90 Start: 55740, Stop: 56759, Start Num: 66

Candidate Starts for Lilbeanie_90:

(Start: 66 @55740 has 1 MA's), (86, 55887), (90, 55899), (97, 55929), (99, 55935), (111, 55989), (125, 56106), (126, 56124), (128, 56136), (130, 56142), (134, 56163), (136, 56178), (142, 56205), (152, 56274), (157, 56301), (179, 56439), (238, 56754),

Gene: Lilmac1015_76 Start: 46704, Stop: 45700, Start Num: 64

Candidate Starts for Lilmac1015_76:

(Start: 64 @46704 has 20 MA's), (76, 46629), (79, 46611), (125, 46353), (127, 46329), (177, 46047), (184, 46008), (185, 46005),

Gene: LittleMunchkin_79 Start: 61029, Stop: 60016, Start Num: 61

Candidate Starts for LittleMunchkin_79:

(41, 61110), (55, 61074), (Start: 61 @61029 has 111 MA's), (76, 60933), (80, 60900), (84, 60867), (92, 60858), (107, 60816), (128, 60642), (130, 60636), (131, 60624), (140, 60576), (151, 60504), (154, 60483), (160, 60456), (170, 60393), (176, 60357), (190, 60294), (203, 60231), (204, 60228), (208, 60201), (215, 60135),

Gene: LizLemon_85 Start: 64914, Stop: 63844, Start Num: 61

Candidate Starts for LizLemon_85:

(Start: 61 @64914 has 111 MA's), (Start: 67 @64884 has 1 MA's), (76, 64818), (78, 64809), (80, 64785), (82, 64761), (88, 64737), (128, 64482), (130, 64476), (131, 64464), (139, 64431), (143, 64410), (150, 64353), (151, 64350), (158, 64311), (160, 64302), (164, 64272), (167, 64257), (170, 64239), (173, 64215), (177, 64194), (182, 64164), (189, 64143), (203, 64077), (204, 64074), (208, 64047), (209, 64041), (221, 63966), (226, 63930),

Gene: Lolalove_94 Start: 68796, Stop: 67738, Start Num: 61

Candidate Starts for Lolalove_94:

(Start: 61 @68796 has 111 MA's), (76, 68682), (77, 68676), (80, 68649), (81, 68634), (82, 68625), (87, 68607), (101, 68568), (106, 68550), (114, 68505), (122, 68442), (128, 68373), (131, 68355), (135, 68337), (138, 68325), (139, 68319), (149, 68247), (151, 68238), (154, 68217), (174, 68100), (176, 68091), (179, 68067), (180, 68058), (184, 68043), (193, 68022), (203, 67965), (208, 67935), (212, 67893), (214, 67872), (229, 67797), (232, 67776), (237, 67749), (239, 67743),

Gene: LuckyBarnes_34 Start: 31205, Stop: 30204, Start Num: 61

Candidate Starts for LuckyBarnes_34:

(45, 31289), (Start: 61 @31205 has 111 MA's), (104, 30989), (115, 30938), (126, 30821), (128, 30809), (147, 30710), (154, 30668), (161, 30635), (177, 30530), (183, 30497), (198, 30443), (202, 30422), (203, 30413), (210, 30362), (212, 30341), (216, 30311), (224, 30278), (236, 30221), (240, 30209),

Gene: Magpie_88 Start: 68610, Stop: 67552, Start Num: 61

Candidate Starts for Magpie_88:

(Start: 61 @68610 has 111 MA's), (70, 68556), (76, 68496), (77, 68490), (80, 68463), (81, 68448), (82, 68439), (87, 68421), (101, 68382), (106, 68364), (114, 68319), (122, 68256), (128, 68187), (131, 68169), (135, 68151), (139, 68133), (149, 68061), (151, 68052), (154, 68031), (166, 67968), (174, 67914), (176, 67905), (179, 67881), (180, 67872), (184, 67857), (193, 67836), (203, 67779), (208, 67749), (211, 67719), (212, 67707), (214, 67686), (229, 67611), (232, 67590), (237, 67563), (239, 67557),

Gene: Magritte_144 Start: 88480, Stop: 89481, Start Num: 60

Candidate Starts for Magritte_144:

(Start: 60 @88480 has 3 MA's), (73, 88561), (79, 88594), (105, 88711), (107, 88717), (108, 88732), (121, 88816), (122, 88822), (126, 88879), (127, 88885), (128, 88891), (146, 88984), (148, 88990), (163, 89083), (166, 89092), (170, 89119), (193, 89224), (202, 89272), (203, 89281),

Gene: MakoManhole_77 Start: 58357, Stop: 57338, Start Num: 61

Candidate Starts for MakoManhole_77:

(44, 58435), (46, 58426), (56, 58399), (Start: 61 @58357 has 111 MA's), (76, 58261), (80, 58228), (82, 58204), (84, 58195), (94, 58171), (99, 58153), (107, 58132), (125, 57985), (127, 57961), (128, 57955), (131, 57937), (143, 57883), (146, 57847), (154, 57802), (162, 57751), (182, 57637), (204, 57547), (208, 57520), (209, 57514), (228, 57403),

Gene: Mariokart_76 Start: 58166, Stop: 57159, Start Num: 61

Candidate Starts for Mariokart_76:

(20, 58379), (25, 58334), (41, 58250), (44, 58244), (56, 58208), (Start: 61 @58166 has 111 MA's), (76, 58070), (80, 58037), (81, 58022), (91, 57995), (96, 57971), (105, 57956), (125, 57806), (127, 57782), (128, 57776), (131, 57758), (143, 57704), (148, 57662), (149, 57653), (154, 57623), (162, 57572), (177, 57488), (182, 57458), (200, 57389), (203, 57371), (204, 57368), (209, 57335), (212, 57299),

Gene: Marley1013_95 Start: 67451, Stop: 66339, Start Num: 52

Candidate Starts for Marley1013_95:

(24, 67571), (Start: 31 @67541 has 6 MA's), (Start: 52 @67451 has 15 MA's), (Start: 61 @67397 has 111 MA's), (Start: 67 @67367 has 1 MA's), (76, 67283), (80, 67250), (96, 67178), (114, 67106), (124, 67025), (127, 66980), (128, 66974), (130, 66968), (131, 66956), (139, 66920), (154, 66818), (158, 66800), (166, 66755), (177, 66683), (179, 66668), (185, 66641), (189, 66632), (201, 66575), (212, 66491), (215, 66467), (223, 66437),

Gene: Martha_76 Start: 50549, Stop: 49554, Start Num: 64

Candidate Starts for Martha_76:

(Start: 64 @50549 has 20 MA's), (79, 50456), (88, 50393), (95, 50375), (125, 50195), (127, 50171), (128, 50165), (131, 50147), (132, 50144), (146, 50069), (156, 50018), (177, 49889), (179, 49874), (189, 49838), (196, 49805), (227, 49622),

Gene: MasterPo_86 Start: 64783, Stop: 63713, Start Num: 61

Candidate Starts for MasterPo_86:

(23, 64978), (Start: 61 @64783 has 111 MA's), (Start: 67 @64753 has 1 MA's), (76, 64687), (78, 64678), (80, 64654), (82, 64630), (88, 64606), (128, 64351), (130, 64345), (131, 64333), (139, 64300), (143, 64279), (150, 64222), (151, 64219), (158, 64180), (164, 64141), (167, 64126), (170, 64108), (173, 64084), (177, 64063), (182, 64033), (189, 64012), (203, 63946), (204, 63943), (208, 63916), (209, 63910), (221, 63835), (226, 63799),

Gene: MenE_55 Start: 31078, Stop: 32130, Start Num: 57

Candidate Starts for MenE_55:

(Start: 57 @31078 has 6 MA's), (Start: 61 @31120 has 111 MA's), (76, 31216), (81, 31264), (108, 31354), (128, 31513), (130, 31519), (132, 31534), (144, 31576), (148, 31615), (177, 31789), (202, 31897), (220, 32017), (228, 32059), (240, 32119),

Gene: Mithril_90 Start: 68622, Stop: 67564, Start Num: 61

Candidate Starts for Mithril_90:

(Start: 61 @68622 has 111 MA's), (76, 68508), (77, 68502), (80, 68475), (81, 68460), (82, 68451), (87, 68433), (101, 68394), (106, 68376), (114, 68331), (122, 68268), (128, 68199), (131, 68181), (135, 68163), (139, 68145), (149, 68073), (151, 68064), (154, 68043), (174, 67926), (176, 67917), (179, 67893), (180, 67884), (184, 67869), (193, 67848), (203, 67791), (208, 67761), (211, 67731), (212, 67719), (214, 67698), (229, 67623), (232, 67602), (237, 67575), (239, 67569),

Gene: MmasiCarm_98 Start: 67294, Stop: 66236, Start Num: 61

Candidate Starts for MmasiCarm_98:

(24, 67468), (Start: 31 @67438 has 6 MA's), (Start: 52 @67348 has 15 MA's), (Start: 61 @67294 has 111 MA's), (Start: 67 @67264 has 1 MA's), (76, 67180), (80, 67147), (96, 67075), (114, 67003), (124, 66922), (127, 66877), (128, 66871), (130, 66865), (131, 66853), (139, 66817), (154, 66715), (158, 66697), (166, 66652), (177, 66580), (179, 66565), (185, 66538), (189, 66529), (201, 66472), (212, 66388), (215, 66364), (223, 66334),

Gene: Mortcellus_97 Start: 68032, Stop: 66974, Start Num: 61

Candidate Starts for Mortcellus_97:

(24, 68206), (Start: 31 @68176 has 6 MA's), (Start: 52 @68086 has 15 MA's), (Start: 61 @68032 has 111 MA's), (Start: 67 @68002 has 1 MA's), (76, 67918), (80, 67885), (96, 67813), (114, 67741), (124, 67660), (127, 67615), (128, 67609), (130, 67603), (131, 67591), (139, 67555), (154, 67453), (158, 67435), (166, 67390), (177, 67318), (179, 67303), (185, 67276), (189, 67267), (201, 67210), (212, 67126), (215, 67102), (223, 67072),

Gene: Morty007_95 Start: 67664, Stop: 66606, Start Num: 61

Candidate Starts for Morty007_95:

(24, 67838), (Start: 31 @67808 has 6 MA's), (Start: 52 @67718 has 15 MA's), (Start: 61 @67664 has 111 MA's), (Start: 67 @67634 has 1 MA's), (76, 67550), (80, 67517), (96, 67445), (114, 67373), (124, 67292), (127, 67247), (128, 67241), (130, 67235), (131, 67223), (139, 67187), (154, 67085), (158, 67067), (166, 67022), (177, 66950), (179, 66935), (185, 66908), (189, 66899), (201, 66842), (212, 66758), (215, 66734), (223, 66704),

Gene: MossRose_79 Start: 59268, Stop: 58249, Start Num: 61

Candidate Starts for MossRose_79:

(Start: 26 @59424 has 1 MA's), (44, 59346), (56, 59310), (Start: 61 @59268 has 111 MA's), (76, 59172), (80, 59139), (82, 59115), (84, 59106), (94, 59082), (99, 59064), (107, 59043), (125, 58896), (127, 58872), (128, 58866), (131, 58848), (143, 58794), (146, 58758), (154, 58713), (162, 58662), (182, 58548), (204, 58458), (208, 58431), (209, 58425), (228, 58314),

Gene: Mudslide_93 Start: 69027, Stop: 67969, Start Num: 61

Candidate Starts for Mudslide_93:

(Start: 61 @69027 has 111 MA's), (70, 68973), (76, 68913), (77, 68907), (80, 68880), (81, 68865), (82, 68856), (87, 68838), (101, 68799), (106, 68781), (114, 68736), (122, 68673), (128, 68604), (131, 68586), (135, 68568), (138, 68556), (139, 68550), (149, 68478), (151, 68469), (154, 68448), (174, 68331), (176, 68322), (179, 68298), (180, 68289), (184, 68274), (193, 68253), (203, 68196), (208, 68166), (212, 68124), (214, 68103), (229, 68028), (232, 68007), (237, 67980), (239, 67974),

Gene: Mufasa8_100 Start: 59050, Stop: 58061, Start Num: 60

Candidate Starts for Mufasa8_100:

(Start: 60 @59050 has 3 MA's), (118, 58750), (122, 58729), (126, 58672), (127, 58666), (128, 58660), (130, 58654), (131, 58642), (138, 58627), (159, 58495), (177, 58384), (192, 58330), (204, 58264), (222, 58144),

Gene: Mysterious_91 Start: 67024, Stop: 65951, Start Num: 61

Candidate Starts for Mysterious_91:

(Start: 61 @67024 has 111 MA's), (76, 66928), (80, 66895), (92, 66853), (99, 66823), (106, 66799), (109, 66772), (113, 66760), (128, 66622), (130, 66616), (131, 66604), (140, 66562), (151, 66490), (167, 66397), (172, 66358), (176, 66343), (178, 66331), (182, 66304), (184, 66295), (189, 66283), (203, 66217), (204, 66214), (205, 66208), (206, 66205), (215, 66121), (216, 66115), (225, 66079), (242, 65998), (243, 65989), (246, 65968),

Gene: NHagos_76 Start: 57550, Stop: 56543, Start Num: 61

Candidate Starts for NHagos_76:

(Start: 61 @57550 has 111 MA's), (76, 57454), (80, 57421), (96, 57355), (105, 57340), (107, 57334), (125, 57190), (127, 57166), (128, 57160), (131, 57142), (143, 57088), (147, 57049), (154, 57007), (162, 56956), (190, 56818), (204, 56752), (208, 56725), (209, 56719), (216, 56653), (225, 56617),

Gene: Nanao_91 Start: 67687, Stop: 66641, Start Num: 61

Candidate Starts for Nanao_91:

(Start: 61 @67687 has 111 MA's), (70, 67633), (71, 67615), (76, 67573), (80, 67540), (81, 67525), (82, 67516), (87, 67498), (101, 67459), (105, 67444), (114, 67396), (122, 67333), (128, 67264), (130, 67258), (131, 67246), (149, 67138), (151, 67129), (154, 67108), (167, 67036), (179, 66958), (180, 66949), (182, 66943), (184, 66934), (193, 66913), (203, 66856), (208, 66826), (212, 66784), (217, 66754), (229, 66700), (232, 66679), (239, 66646),

Gene: Nangang_91 Start: 67505, Stop: 66432, Start Num: 61

Candidate Starts for Nangang_91:

(13, 67814), (22, 67700), (27, 67658), (Start: 61 @67505 has 111 MA's), (76, 67409), (80, 67376), (92, 67334), (99, 67304), (108, 67262), (109, 67253), (128, 67103), (130, 67097), (143, 67031), (151, 66971), (167, 66878), (168, 66869), (172, 66839), (176, 66824), (182, 66785), (184, 66776), (189, 66764), (204, 66695), (205, 66689), (206, 66686), (215, 66602), (216, 66596), (225, 66557), (243, 66467), (244, 66464), (245, 66449),

Gene: NathanVaag_72 Start: 49262, Stop: 48258, Start Num: 64

Candidate Starts for NathanVaag_72:

(Start: 54 @49325 has 2 MA's), (Start: 64 @49262 has 20 MA's), (88, 49103), (96, 49082), (102, 49064), (110, 49019), (112, 49010), (116, 48983), (125, 48899), (127, 48875), (128, 48869), (131, 48851), (150, 48752), (156, 48722), (177, 48593), (179, 48578), (218, 48371), (227, 48326), (237, 48272),

Gene: Neos5_96 Start: 67264, Stop: 66062, Start Num: 31

Candidate Starts for Neos5_96:

(24, 67294), (Start: 31 @67264 has 6 MA's), (Start: 52 @67174 has 15 MA's), (Start: 61 @67120 has 111 MA's), (Start: 67 @67090 has 1 MA's), (76, 67006), (80, 66973), (96, 66901), (114, 66829), (124, 66748), (127, 66703), (128, 66697), (130, 66691), (131, 66679), (139, 66643), (154, 66541), (158, 66523), (166, 66478), (177, 66406), (179, 66391), (185, 66364), (189, 66355), (201, 66298), (212, 66214), (215, 66190), (223, 66160),

Gene: Nigel_88 Start: 67148, Stop: 66102, Start Num: 61

Candidate Starts for Nigel_88:

(Start: 61 @67148 has 111 MA's), (76, 67034), (80, 67001), (81, 66986), (82, 66977), (83, 66971), (87, 66959), (101, 66920), (105, 66905), (106, 66902), (114, 66857), (122, 66794), (128, 66725), (130, 66719), (131, 66707), (149, 66599), (151, 66590), (154, 66569), (160, 66542), (167, 66497), (174, 66452), (179, 66419), (180, 66410), (182, 66404), (184, 66395), (193, 66374), (203, 66317), (208, 66287), (211, 66257), (217, 66215), (229, 66161), (232, 66140), (236, 66116), (239, 66107),

Gene: Nozo_97 Start: 67727, Stop: 66615, Start Num: 52

Candidate Starts for Nozo_97:

(24, 67847), (Start: 31 @67817 has 6 MA's), (Start: 52 @67727 has 15 MA's), (Start: 61 @67673 has 111 MA's), (Start: 67 @67643 has 1 MA's), (76, 67559), (80, 67526), (96, 67454), (114, 67382), (124, 67301), (127, 67256), (128, 67250), (130, 67244), (131, 67232), (133, 67226), (139, 67196), (154, 67094), (158, 67076), (166, 67031), (177, 66959), (179, 66944), (185, 66917), (189, 66908), (201, 66851), (212, 66767), (215, 66743), (223, 66713),

Gene: Obutu_99 Start: 67477, Stop: 66419, Start Num: 61

Candidate Starts for Obutu_99:

(24, 67651), (Start: 31 @67621 has 6 MA's), (Start: 52 @67531 has 15 MA's), (Start: 61 @67477 has 111 MA's), (Start: 67 @67447 has 1 MA's), (76, 67363), (80, 67330), (96, 67258), (114, 67186), (124, 67105), (127, 67060), (128, 67054), (130, 67048), (131, 67036), (139, 67000), (154, 66898), (158, 66880), (166, 66835), (177, 66763), (179, 66748), (185, 66721), (189, 66712), (201, 66655), (212, 66571), (215, 66547), (223, 66517),

Gene: Opia_86 Start: 64807, Stop: 63737, Start Num: 61

Candidate Starts for Opia_86:

(Start: 61 @64807 has 111 MA's), (Start: 67 @64777 has 1 MA's), (76, 64711), (78, 64702), (80, 64678), (82, 64654), (88, 64630), (128, 64375), (130, 64369), (131, 64357), (139, 64324), (143, 64303), (150, 64246), (151, 64243), (158, 64204), (160, 64195), (164, 64165), (167, 64150), (173, 64108), (177, 64087), (182, 64057), (189, 64036), (203, 63970), (204, 63967), (208, 63940), (209, 63934), (221, 63859), (226, 63823),

Gene: OrangeOswald_96 Start: 66962, Stop: 65850, Start Num: 52

Candidate Starts for OrangeOswald_96:

(24, 67082), (Start: 31 @67052 has 6 MA's), (Start: 52 @66962 has 15 MA's), (Start: 61 @66908 has 111 MA's), (Start: 67 @66878 has 1 MA's), (76, 66794), (80, 66761), (96, 66689), (114, 66617), (124, 66536), (127, 66491), (128, 66485), (130, 66479), (131, 66467), (133, 66461), (139, 66431), (154, 66329), (158, 66311), (166, 66266), (177, 66194), (179, 66179), (185, 66152), (189, 66143), (201, 66086), (212, 66002), (215, 65978), (223, 65948),

Gene: PenguinLover67_89 Start: 66616, Stop: 65579, Start Num: 61

Candidate Starts for PenguinLover67_89:

(Start: 61 @66616 has 111 MA's), (63, 66607), (76, 66520), (80, 66487), (81, 66472), (84, 66454), (85, 66451), (105, 66406), (115, 66355), (128, 66226), (130, 66220), (131, 66208), (140, 66166), (143, 66154), (147, 66115), (149, 66103), (151, 66094), (160, 66046), (162, 66022), (164, 66016), (166, 66010), (167, 66001), (170, 65983), (176, 65947), (182, 65908), (184, 65899), (189, 65887), (193, 65878), (200, 65839), (203, 65821), (204, 65818), (206, 65809), (215, 65725), (216, 65719), (225, 65683),

Gene: Phaedrus_92 Start: 66323, Stop: 65265, Start Num: 61

Candidate Starts for Phaedrus_92:

(24, 66497), (Start: 31 @66467 has 6 MA's), (Start: 52 @66377 has 15 MA's), (Start: 61 @66323 has 111 MA's), (Start: 67 @66293 has 1 MA's), (76, 66209), (80, 66176), (96, 66104), (114, 66032), (124, 65951), (127, 65906), (128, 65900), (130, 65894), (131, 65882), (139, 65846), (154, 65744), (158, 65726), (166, 65681), (177, 65609), (179, 65594), (185, 65567), (189, 65558), (201, 65501), (212,

65417), (215, 65393), (223, 65363),

Gene: Phantasmagoria_84 Start: 64790, Stop: 63720, Start Num: 61

Candidate Starts for Phantasmagoria_84:

(23, 64985), (Start: 61 @64790 has 111 MA's), (Start: 67 @64760 has 1 MA's), (76, 64694), (78, 64685), (80, 64661), (82, 64637), (88, 64613), (128, 64358), (130, 64352), (131, 64340), (139, 64307), (143, 64286), (150, 64229), (151, 64226), (158, 64187), (160, 64178), (164, 64148), (167, 64133), (170, 64115), (173, 64091), (177, 64070), (182, 64040), (189, 64019), (203, 63953), (204, 63950), (208, 63923), (209, 63917), (221, 63842), (226, 63806),

Gene: Phayeta_99 Start: 67158, Stop: 66100, Start Num: 61

Candidate Starts for Phayeta_99:

(24, 67332), (Start: 31 @67302 has 6 MA's), (Start: 52 @67212 has 15 MA's), (Start: 61 @67158 has 111 MA's), (Start: 67 @67128 has 1 MA's), (76, 67044), (80, 67011), (96, 66939), (114, 66867), (124, 66786), (127, 66741), (128, 66735), (130, 66729), (131, 66717), (139, 66681), (154, 66579), (158, 66561), (166, 66516), (177, 66444), (179, 66429), (185, 66402), (189, 66393), (201, 66336), (212, 66252), (215, 66228), (223, 66198),

Gene: Phelemich_87 Start: 66931, Stop: 65858, Start Num: 61

Candidate Starts for Phelemich_87:

(35, 67057), (38, 67045), (46, 67006), (Start: 61 @66931 has 111 MA's), (76, 66835), (80, 66802), (92, 66760), (99, 66730), (106, 66706), (109, 66679), (128, 66529), (130, 66523), (131, 66511), (140, 66469), (151, 66397), (172, 66265), (176, 66250), (178, 66238), (182, 66211), (184, 66202), (189, 66190), (195, 66157), (203, 66124), (204, 66121), (205, 66115), (206, 66112), (215, 66028), (216, 66022), (225, 65986), (242, 65905), (246, 65875),

Gene: Philly_96 Start: 66810, Stop: 65698, Start Num: 52

Candidate Starts for Philly_96:

(24, 66930), (Start: 31 @66900 has 6 MA's), (Start: 52 @66810 has 15 MA's), (Start: 61 @66756 has 111 MA's), (Start: 67 @66726 has 1 MA's), (76, 66642), (80, 66609), (96, 66537), (114, 66465), (124, 66384), (127, 66339), (128, 66333), (130, 66327), (131, 66315), (139, 66279), (154, 66177), (158, 66159), (166, 66114), (177, 66042), (179, 66027), (185, 66000), (189, 65991), (201, 65934), (212, 65850), (215, 65826), (223, 65796),

Gene: Phlyer_97 Start: 67618, Stop: 66560, Start Num: 61

Candidate Starts for Phlyer_97:

(24, 67792), (Start: 31 @67762 has 6 MA's), (Start: 52 @67672 has 15 MA's), (Start: 61 @67618 has 111 MA's), (Start: 67 @67588 has 1 MA's), (76, 67504), (80, 67471), (96, 67399), (114, 67327), (124, 67246), (127, 67201), (128, 67195), (130, 67189), (131, 67177), (139, 67141), (154, 67039), (158, 67021), (166, 66976), (177, 66904), (179, 66889), (185, 66862), (189, 66853), (201, 66796), (212, 66712), (215, 66688), (223, 66658),

Gene: Phonegingi_50 Start: 30903, Stop: 31913, Start Num: 61

Candidate Starts for Phonegingi_50:

(Start: 61 @30903 has 111 MA's), (76, 30999), (81, 31047), (108, 31137), (128, 31296), (130, 31302), (144, 31359), (148, 31398), (177, 31572), (202, 31680), (220, 31800), (228, 31842), (240, 31902),

Gene: Piccoletto_73 Start: 49488, Stop: 48421, Start Num: 54

Candidate Starts for Piccoletto_73:

(Start: 54 @49488 has 2 MA's), (Start: 64 @49425 has 20 MA's), (88, 49266), (96, 49245), (102, 49227), (110, 49182), (112, 49173), (116, 49146), (125, 49062), (126, 49044), (127, 49038), (128, 49032), (131, 49014), (150, 48915), (156, 48885), (177, 48756), (179, 48741), (218, 48534), (227, 48489), (237, 48435),

Gene: Pickles13_49 Start: 31137, Stop: 32189, Start Num: 57

Candidate Starts for Pickles13_49:

(34, 31050), (Start: 57 @31137 has 6 MA's), (Start: 61 @31179 has 111 MA's), (76, 31275), (81, 31323), (108, 31413), (128, 31572), (130, 31578), (132, 31593), (144, 31635), (148, 31674), (177, 31848), (202, 31956), (220, 32076), (228, 32118), (240, 32178),

Gene: Pipefish_96 Start: 67436, Stop: 66234, Start Num: 31

Candidate Starts for Pipefish_96:

(24, 67466), (Start: 31 @67436 has 6 MA's), (Start: 52 @67346 has 15 MA's), (Start: 61 @67292 has 111 MA's), (Start: 67 @67262 has 1 MA's), (76, 67178), (80, 67145), (96, 67073), (114, 67001), (124, 66920), (127, 66875), (128, 66869), (130, 66863), (131, 66851), (139, 66815), (154, 66713), (158, 66695), (166, 66650), (177, 66578), (179, 66563), (185, 66536), (189, 66527), (201, 66470), (212, 66386), (215, 66362), (223, 66332),

Gene: Pippa_77 Start: 50604, Stop: 49609, Start Num: 64

Candidate Starts for Pippa_77:

(Start: 64 @50604 has 20 MA's), (74, 50541), (79, 50511), (88, 50448), (95, 50430), (125, 50250), (127, 50226), (128, 50220), (131, 50202), (132, 50199), (146, 50124), (156, 50073), (177, 49944), (179, 49929), (189, 49893), (196, 49860), (227, 49677),

Gene: Poster_90 Start: 67688, Stop: 66642, Start Num: 61

Candidate Starts for Poster_90:

(Start: 61 @67688 has 111 MA's), (70, 67634), (71, 67616), (76, 67574), (80, 67541), (81, 67526), (82, 67517), (87, 67499), (101, 67460), (105, 67445), (114, 67397), (122, 67334), (128, 67265), (130, 67259), (131, 67247), (149, 67139), (151, 67130), (154, 67109), (167, 67037), (179, 66959), (180, 66950), (182, 66944), (184, 66935), (193, 66914), (203, 66857), (208, 66827), (212, 66785), (217, 66755), (229, 66701), (232, 66680), (239, 66647),

Gene: Prairie_72 Start: 45989, Stop: 44991, Start Num: 65

Candidate Starts for Prairie_72:

(21, 46193), (Start: 58 @46037 has 2 MA's), (Start: 65 @45989 has 4 MA's), (76, 45920), (79, 45902), (125, 45644), (126, 45626), (127, 45620), (177, 45338), (184, 45299), (185, 45296),

Gene: Prince_92 Start: 68894, Stop: 67836, Start Num: 61

Candidate Starts for Prince_92:

(Start: 61 @68894 has 111 MA's), (76, 68780), (77, 68774), (80, 68747), (81, 68732), (82, 68723), (87, 68705), (101, 68666), (106, 68648), (114, 68603), (122, 68540), (128, 68471), (131, 68453), (135, 68435), (138, 68423), (139, 68417), (149, 68345), (151, 68336), (154, 68315), (174, 68198), (176, 68189), (179, 68165), (180, 68156), (184, 68141), (193, 68120), (203, 68063), (208, 68033), (212, 67991), (214, 67970), (229, 67895), (232, 67874), (237, 67847), (239, 67841),

Gene: Quesadilla_91 Start: 67907, Stop: 66864, Start Num: 61

Candidate Starts for Quesadilla_91:

(Start: 61 @67907 has 111 MA's), (63, 67898), (76, 67811), (80, 67778), (81, 67763), (84, 67745), (105, 67697), (127, 67523), (128, 67517), (130, 67511), (131, 67499), (140, 67457), (143, 67445), (147, 67406), (149, 67394), (151, 67385), (160, 67337), (162, 67313), (166, 67301), (176, 67238), (177, 67229), (184, 67190), (189, 67178), (193, 67169), (200, 67130), (202, 67121), (203, 67112), (204, 67109), (206, 67100), (212, 67040), (215, 67016), (216, 67010), (231, 66950), (234, 66923), (241, 66899), (244, 66881),

Gene: Qyrzula_76 Start: 64899, Stop: 63859, Start Num: 67

Candidate Starts for Qyrzula_76:

(Start: 61 @64929 has 111 MA's), (Start: 67 @64899 has 1 MA's), (76, 64833), (78, 64824), (80, 64800), (82, 64776), (88, 64752), (128, 64497), (130, 64491), (131, 64479), (139, 64446), (143, 64425), (150, 64368), (151, 64365), (158, 64326), (160, 64317), (164, 64287), (167, 64272), (170, 64254), (173, 64230), (177, 64209), (182, 64179), (189, 64158), (203, 64092), (204, 64089), (208, 64062), (209, 64056), (221, 63981), (226, 63945),

Gene: RagingRooster_97 Start: 66904, Stop: 65846, Start Num: 61

Candidate Starts for RagingRooster_97:

(24, 67078), (Start: 31 @67048 has 6 MA's), (Start: 52 @66958 has 15 MA's), (Start: 61 @66904 has 111 MA's), (Start: 67 @66874 has 1 MA's), (76, 66790), (80, 66757), (96, 66685), (114, 66613), (124, 66532), (127, 66487), (128, 66481), (130, 66475), (131, 66463), (133, 66457), (139, 66427), (154, 66325), (158, 66307), (166, 66262), (177, 66190), (179, 66175), (185, 66148), (189, 66139), (201, 66082), (212, 65998), (215, 65974), (223, 65944),

Gene: RawrgerThat_90 Start: 68392, Stop: 67343, Start Num: 61

Candidate Starts for RawrgerThat_90:

(Start: 61 @68392 has 111 MA's), (70, 68338), (71, 68320), (76, 68278), (77, 68272), (80, 68245), (81, 68230), (98, 68176), (105, 68152), (114, 68104), (115, 68101), (116, 68086), (128, 67972), (131, 67954), (135, 67936), (139, 67918), (154, 67816), (174, 67699), (176, 67690), (179, 67666), (181, 67654), (182, 67651), (184, 67639), (203, 67561), (208, 67531), (211, 67501), (214, 67468), (229, 67402), (232, 67381), (239, 67348),

Gene: Reprobate_89 Start: 66936, Stop: 65863, Start Num: 61

Candidate Starts for Reprobate_89:

(35, 67062), (38, 67050), (46, 67011), (Start: 61 @66936 has 111 MA's), (76, 66840), (80, 66807), (92, 66765), (99, 66735), (106, 66711), (109, 66684), (128, 66534), (130, 66528), (131, 66516), (140, 66474), (151, 66402), (172, 66270), (176, 66255), (178, 66243), (182, 66216), (184, 66207), (189, 66195), (195, 66162), (203, 66129), (204, 66126), (205, 66120), (206, 66117), (215, 66033), (216, 66027), (225, 65991), (242, 65910), (246, 65880),

Gene: Rhinoforte_85 Start: 64826, Stop: 63756, Start Num: 61

Candidate Starts for Rhinoforte_85:

(Start: 61 @64826 has 111 MA's), (Start: 67 @64796 has 1 MA's), (76, 64730), (78, 64721), (80, 64697), (82, 64673), (88, 64649), (128, 64394), (130, 64388), (131, 64376), (139, 64343), (143, 64322), (150, 64265), (151, 64262), (158, 64223), (160, 64214), (164, 64184), (167, 64169), (170, 64151), (173, 64127), (177, 64106), (182, 64076), (189, 64055), (203, 63989), (204, 63986), (208, 63959), (209, 63953), (221, 63878), (226, 63842),

Gene: Rich_88 Start: 67174, Stop: 66101, Start Num: 61

Candidate Starts for Rich_88:

(36, 67288), (Start: 61 @67174 has 111 MA's), (76, 67078), (80, 67045), (109, 66922), (127, 66778), (128, 66772), (130, 66766), (143, 66700), (172, 66508), (176, 66493), (182, 66457), (184, 66448), (189, 66436), (193, 66427), (204, 66367), (206, 66358), (215, 66274), (216, 66268), (231, 66205), (243, 66139), (245, 66121),

Gene: Rita1961_98 Start: 67249, Stop: 66191, Start Num: 61

Candidate Starts for Rita1961_98:

(24, 67423), (Start: 31 @67393 has 6 MA's), (Start: 52 @67303 has 15 MA's), (Start: 61 @67249 has 111 MA's), (Start: 67 @67219 has 1 MA's), (76, 67135), (80, 67102), (96, 67030), (114, 66958), (124, 66877), (127, 66832), (128, 66826), (130, 66820), (131, 66808), (139, 66772), (154, 66670), (158, 66652), (166, 66607), (177, 66535), (179, 66520), (185, 66493), (189, 66484), (201, 66427), (212, 66343), (215, 66319), (223, 66289),

Gene: RomaT_97 Start: 67526, Stop: 66414, Start Num: 52

Candidate Starts for RomaT_97:

(24, 67646), (Start: 31 @67616 has 6 MA's), (Start: 52 @67526 has 15 MA's), (Start: 61 @67472 has 111 MA's), (Start: 67 @67442 has 1 MA's), (76, 67358), (80, 67325), (96, 67253), (114, 67181), (124, 67100), (127, 67055), (128, 67049), (130, 67043), (131, 67031), (139, 66995), (154, 66893), (158, 66875), (166, 66830), (177, 66758), (179, 66743), (185, 66716), (189, 66707), (201, 66650), (212, 66566), (215, 66542), (223, 66512),

Gene: Rosebush_83 Start: 64898, Stop: 63828, Start Num: 61

Candidate Starts for Rosebush_83:

(Start: 61 @64898 has 111 MA's), (Start: 67 @64868 has 1 MA's), (76, 64802), (78, 64793), (80, 64769), (82, 64745), (88, 64721), (128, 64466), (130, 64460), (131, 64448), (139, 64415), (143, 64394), (150, 64337), (151, 64334), (158, 64295), (160, 64286), (164, 64256), (167, 64241), (173, 64199), (177, 64178), (182, 64148), (189, 64127), (203, 64061), (204, 64058), (208, 64031), (209, 64025), (221, 63950), (226, 63914),

Gene: SJReid_180 Start: 106944, Stop: 107924, Start Num: 61

Candidate Starts for SJReid_180:

(Start: 61 @106944 has 111 MA's), (69, 106986), (127, 107322), (132, 107349), (142, 107385), (153, 107463), (170, 107559), (177, 107604), (178, 107607), (185, 107646), (188, 107655), (197, 107691), (199, 107703), (206, 107736), (233, 107904), (235, 107910),

Gene: Sabella_85 Start: 64734, Stop: 63664, Start Num: 61

Candidate Starts for Sabella_85:

(Start: 61 @64734 has 111 MA's), (Start: 67 @64704 has 1 MA's), (76, 64638), (78, 64629), (80, 64605), (82, 64581), (88, 64557), (128, 64302), (130, 64296), (131, 64284), (139, 64251), (143, 64230), (150, 64173), (151, 64170), (158, 64131), (160, 64122), (164, 64092), (167, 64077), (170, 64059), (173, 64035), (177, 64014), (182, 63984), (189, 63963), (203, 63897), (204, 63894), (208, 63867), (209, 63861), (221, 63786), (226, 63750),

Gene: Saguaro_84 Start: 66210, Stop: 65080, Start Num: 40

Candidate Starts for Saguaro_84:

(Start: 40 @66210 has 1 MA's), (51, 66177), (Start: 61 @66126 has 111 MA's), (76, 66030), (80, 65997), (81, 65982), (92, 65955), (97, 65931), (105, 65916), (107, 65910), (114, 65868), (127, 65742), (128, 65736), (130, 65730), (137, 65691), (140, 65676), (147, 65625), (149, 65613), (151, 65604), (162, 65532), (166, 65520), (167, 65511), (176, 65457), (182, 65418), (184, 65409), (189, 65397), (193, 65388), (200, 65349), (202, 65340), (203, 65331), (204, 65328), (206, 65319), (215, 65235), (216, 65229), (222, 65211), (225, 65193), (228, 65184), (234, 65142),

Gene: Serendipitous_91 Start: 67097, Stop: 66021, Start Num: 61

Candidate Starts for Serendipitous_91:

(Start: 61 @67097 has 111 MA's), (76, 67001), (80, 66968), (109, 66845), (127, 66701), (128, 66695), (130, 66689), (143, 66623), (151, 66563), (167, 66470), (170, 66452), (172, 66431), (176, 66416), (177, 66407), (182, 66377), (184, 66368), (189, 66356), (204, 66287), (206, 66278), (215, 66194), (216, 66188), (243, 66062), (245, 66044),

Gene: Shade_76 Start: 50360, Stop: 49365, Start Num: 64

Candidate Starts for Shade_76:

(Start: 64 @50360 has 20 MA's), (79, 50267), (88, 50204), (95, 50186), (125, 50006), (127, 49982), (128, 49976), (131, 49958), (132, 49955), (146, 49880), (156, 49829), (177, 49700), (179, 49685), (189, 49649), (196, 49616), (227, 49433),

Gene: Shatter_80 Start: 59316, Stop: 58309, Start Num: 61

Candidate Starts for Shatter_80:

(Start: 61 @59316 has 111 MA's), (76, 59220), (80, 59187), (81, 59172), (96, 59121), (105, 59106), (127, 58932), (128, 58926), (131, 58908), (143, 58854), (148, 58812), (149, 58803), (154, 58773), (162, 58722), (200, 58539), (203, 58521), (204, 58518), (209, 58485), (212, 58449), (235, 58326),

Gene: Sicarius2_78 Start: 48605, Stop: 47610, Start Num: 64

Candidate Starts for Sicarius2_78:

(Start: 64 @48605 has 20 MA's), (79, 48512), (86, 48458), (88, 48449), (95, 48431), (125, 48251), (128, 48221), (131, 48203), (148, 48119), (149, 48110), (156, 48074), (161, 48047), (189, 47894), (196, 47861), (227, 47678),

Gene: SirJeffery_88 Start: 67154, Stop: 65760, Start Num: 61

Candidate Starts for SirJeffery_88:

(33, 67277), (35, 67271), (Start: 61 @67154 has 111 MA's), (76, 67058), (80, 67025), (92, 66983), (109, 66902), (128, 66752), (130, 66746), (143, 66680), (167, 66527), (176, 66473), (182, 66437), (184, 66428), (189, 66416), (193, 66407), (204, 66347), (206, 66338), (215, 66254), (216, 66248), (231, 66185), (241, 66134), (243, 66119), (247, 66083), (248, 66062), (249, 65954), (250, 65915), (251, 65804), (252, 65783),

Gene: Sisko_78 Start: 59761, Stop: 58751, Start Num: 61

Candidate Starts for Sisko_78:

(30, 59902), (41, 59839), (Start: 61 @59761 has 111 MA's), (76, 59665), (80, 59632), (92, 59590), (107, 59548), (127, 59380), (128, 59374), (130, 59368), (140, 59311), (149, 59248), (154, 59218), (160, 59191), (170, 59128), (176, 59092), (182, 59053), (204, 58963), (212, 58894), (215, 58870), (216, 58864), (236, 58771),

Gene: SlippinJimmy_100 Start: 68272, Stop: 67214, Start Num: 61

Candidate Starts for SlippinJimmy_100:

(24, 68446), (Start: 31 @68416 has 6 MA's), (Start: 52 @68326 has 15 MA's), (Start: 61 @68272 has 111 MA's), (Start: 67 @68242 has 1 MA's), (76, 68158), (80, 68125), (96, 68053), (114, 67981), (124, 67900), (127, 67855), (128, 67849), (130, 67843), (131, 67831), (133, 67825), (139, 67795), (154, 67693), (158, 67675), (166, 67630), (177, 67558), (179, 67543), (185, 67516), (189, 67507), (201, 67450), (212, 67366), (215, 67342), (223, 67312),

Gene: Sonali_94 Start: 58994, Stop: 57999, Start Num: 60

Candidate Starts for Sonali_94:

(Start: 60 @58994 has 3 MA's), (76, 58898), (79, 58880), (84, 58835), (85, 58832), (126, 58613), (128, 58601), (131, 58583), (132, 58580), (166, 58397), (177, 58325), (187, 58274), (199, 58223), (204, 58199), (205, 58193), (212, 58130), (213, 58118),

Gene: Sonny_76 Start: 50316, Stop: 49321, Start Num: 64

Candidate Starts for Sonny_76:

(Start: 64 @50316 has 20 MA's), (79, 50223), (88, 50160), (95, 50142), (121, 50007), (125, 49962), (127, 49938), (128, 49932), (131, 49914), (132, 49911), (146, 49836), (156, 49785), (177, 49656), (179, 49641), (189, 49605), (196, 49572), (227, 49389),

Gene: Soos_1 Start: 1, Stop: 1032, Start Num: 61

Candidate Starts for Soos_1:

(Start: 61 @1 has 111 MA's), (76, 97), (94, 199), (126, 406), (128, 418), (130, 424), (141, 481), (147, 526), (151, 547), (158, 586), (177, 703), (179, 718), (186, 754), (189, 757),

Gene: Sour_74 Start: 59508, Stop: 58498, Start Num: 61

Candidate Starts for Sour_74:

(Start: 61 @59508 has 111 MA's), (76, 59412), (80, 59379), (114, 59253), (115, 59250), (128, 59121), (130, 59115), (131, 59103), (140, 59058), (149, 58995), (151, 58986), (154, 58965), (167, 58893), (170, 58875), (176, 58839), (182, 58800), (203, 58713), (204, 58710), (208, 58683), (215, 58617),

Gene: StAugustine_161 Start: 88734, Stop: 87598, Start Num: 48

Candidate Starts for StAugustine_161:

(48, 88734), (76, 88548), (80, 88515), (81, 88500), (106, 88419), (115, 88371), (123, 88305), (128, 88242), (166, 88023), (168, 88005), (175, 87963), (176, 87960), (191, 87894), (201, 87843), (203, 87831), (205, 87822), (208, 87801), (215, 87735), (216, 87729), (219, 87723),

Gene: StevieBAY_78 Start: 50960, Stop: 49962, Start Num: 64

Candidate Starts for StevieBAY_78:

(Start: 62 @50966 has 2 MA's), (Start: 64 @50960 has 20 MA's), (79, 50864), (88, 50801), (95, 50783), (125, 50603), (127, 50579), (128, 50573), (131, 50555), (132, 50552), (146, 50477), (156, 50426), (179, 50282), (189, 50246), (196, 50213), (227, 50030), (236, 49979),

Gene: Sting_1 Start: 1, Stop: 1032, Start Num: 61

Candidate Starts for Sting_1:

(Start: 61 @1 has 111 MA's), (76, 97), (94, 199), (117, 307), (126, 406), (128, 418), (130, 424), (141, 481), (146, 523), (147, 526), (151, 547), (158, 586), (177, 703), (179, 718), (186, 754), (189, 757),

Gene: Stinger_89 Start: 67077, Stop: 66025, Start Num: 61

Candidate Starts for Stinger_89:

(Start: 61 @67077 has 111 MA's), (71, 67005), (74, 66975), (76, 66963), (80, 66930), (81, 66915), (82, 66906), (87, 66888), (101, 66843), (105, 66828), (106, 66825), (114, 66780), (122, 66717), (128, 66648), (130, 66642), (131, 66630), (135, 66612), (149, 66522), (151, 66513), (154, 66492), (160, 66465), (167, 66420), (174, 66375), (179, 66342), (180, 66333), (184, 66318), (193, 66297), (203, 66240), (208, 66210), (211, 66180), (212, 66168), (217, 66138), (229, 66084), (232, 66063), (236, 66039), (239, 66030),

Gene: StinkyVeggy_89 Start: 67233, Stop: 66154, Start Num: 61

Candidate Starts for StinkyVeggy_89:

(Start: 61 @67233 has 111 MA's), (76, 67137), (80, 67104), (92, 67062), (109, 66981), (128, 66831), (130, 66825), (143, 66759), (151, 66699), (157, 66666), (167, 66606), (168, 66597), (172, 66567), (176, 66552), (180, 66519), (182, 66513), (184, 66504), (189, 66492), (204, 66423), (205, 66417), (206, 66414), (215, 66330), (216, 66324), (225, 66285), (243, 66195), (244, 66192), (245, 66177),

Gene: Suigeneris_91 Start: 67330, Stop: 66257, Start Num: 61

Candidate Starts for Suigeneris_91:

(27, 67483), (37, 67441), (Start: 61 @67330 has 111 MA's), (76, 67234), (80, 67201), (92, 67159), (109, 67078), (128, 66928), (130, 66922), (143, 66856), (167, 66703), (172, 66664), (176, 66649), (184, 66604), (189, 66592), (193, 66583), (204, 66523), (206, 66514), (215, 66430), (216, 66424), (231, 66361), (243, 66295), (245, 66277),

Gene: SynergyX_98 Start: 67214, Stop: 66156, Start Num: 61

Candidate Starts for SynergyX_98:

(24, 67388), (Start: 31 @67358 has 6 MA's), (Start: 52 @67268 has 15 MA's), (Start: 61 @67214 has 111 MA's), (Start: 67 @67184 has 1 MA's), (76, 67100), (80, 67067), (96, 66995), (114, 66923), (124, 66842), (127, 66797), (128, 66791), (130, 66785), (131, 66773), (133, 66767), (139, 66737), (154, 66635), (158, 66617), (166, 66572), (177, 66500), (179, 66485), (185, 66458), (189, 66449), (201, 66392), (212, 66308), (215, 66284), (223, 66254),

Gene: TA17A_86 Start: 64741, Stop: 63671, Start Num: 61

Candidate Starts for TA17A_86:

(Start: 61 @64741 has 111 MA's), (Start: 67 @64711 has 1 MA's), (76, 64645), (78, 64636), (80, 64612), (82, 64588), (88, 64564), (128, 64309), (130, 64303), (131, 64291), (139, 64258), (143, 64237), (150, 64180), (151, 64177), (158, 64138), (160, 64129), (164, 64099), (167, 64084), (173, 64042), (177, 64021), (182, 63991), (189, 63970), (203, 63904), (204, 63901), (208, 63874), (209, 63868), (221, 63793), (226, 63757),

Gene: TaeYoung_77 Start: 50521, Stop: 49526, Start Num: 64

Candidate Starts for TaeYoung_77:

(Start: 64 @50521 has 20 MA's), (79, 50428), (88, 50365), (95, 50347), (125, 50167), (127, 50143), (128, 50137), (131, 50119), (132, 50116), (146, 50041), (156, 49990), (177, 49861), (179, 49846), (189, 49810), (196, 49777), (227, 49594),

Gene: Timinator_78 Start: 50779, Stop: 49781, Start Num: 64

Candidate Starts for Timinator_78:

(Start: 62 @50785 has 2 MA's), (Start: 64 @50779 has 20 MA's), (79, 50683), (88, 50620), (95, 50602), (125, 50422), (127, 50398), (128, 50392), (131, 50374), (132, 50371), (146, 50296), (156, 50245), (179, 50101), (189, 50065), (196, 50032), (227, 49849), (236, 49798),

Gene: Tinciduntolum_86 Start: 64905, Stop: 63835, Start Num: 61

Candidate Starts for Tinciduntolum_86:

(Start: 61 @64905 has 111 MA's), (Start: 67 @64875 has 1 MA's), (76, 64809), (78, 64800), (80, 64776), (82, 64752), (88, 64728), (128, 64473), (130, 64467), (131, 64455), (139, 64422), (143, 64401), (150, 64344), (151, 64341), (158, 64302), (160, 64293), (164, 64263), (167, 64248), (173, 64206), (177, 64185), (182, 64155), (189, 64134), (203, 64068), (204, 64065), (208, 64038), (209, 64032), (221, 63957), (226, 63921),

Gene: Tres_85 Start: 64759, Stop: 63689, Start Num: 61

Candidate Starts for Tres_85:

(23, 64954), (Start: 61 @64759 has 111 MA's), (Start: 67 @64729 has 1 MA's), (76, 64663), (78, 64654), (80, 64630), (82, 64606), (88, 64582), (128, 64327), (130, 64321), (131, 64309), (139, 64276), (143, 64255), (150, 64198), (151, 64195), (158, 64156), (160, 64147), (164, 64117), (167, 64102), (170, 64084), (173, 64060), (177, 64039), (182, 64009), (189, 63988), (203, 63922), (204, 63919), (208, 63892), (209, 63886), (221, 63811), (226, 63775),

Gene: Tydolla_93 Start: 66890, Stop: 65832, Start Num: 61

Candidate Starts for Tydolla_93:

(24, 67064), (Start: 31 @67034 has 6 MA's), (Start: 52 @66944 has 15 MA's), (Start: 61 @66890 has 111 MA's), (Start: 67 @66860 has 1 MA's), (76, 66776), (80, 66743), (96, 66671), (114, 66599), (124, 66518), (127, 66473), (128, 66467), (130, 66461), (131, 66449), (139, 66413), (154, 66311), (158, 66293), (166, 66248), (177, 66176), (179, 66161), (185, 66134), (189, 66125), (201, 66068), (212, 65984), (215, 65960), (223, 65930),

Gene: Vincenzo_91 Start: 69502, Stop: 68453, Start Num: 61

Candidate Starts for Vincenzo_91:

(11, 69841), (Start: 61 @69502 has 111 MA's), (70, 69448), (76, 69388), (77, 69382), (80, 69355), (84, 69322), (101, 69277), (105, 69262), (106, 69259), (114, 69214), (116, 69196), (119, 69166), (122, 69151), (127, 69088), (128, 69082), (130, 69076), (131, 69064), (135, 69046), (145, 68977), (147, 68968), (149, 68956), (154, 68926), (167, 68854), (174, 68809), (179, 68776), (182, 68761), (184, 68752), (203, 68674), (211, 68614), (212, 68602), (219, 68560), (230, 68506), (231, 68500), (232, 68491), (237, 68464), (239, 68458),

Gene: VioletZ_94 Start: 69001, Stop: 67943, Start Num: 61

Candidate Starts for VioletZ_94:

(Start: 61 @69001 has 111 MA's), (70, 68947), (76, 68887), (77, 68881), (80, 68854), (81, 68839), (82, 68830), (87, 68812), (101, 68773), (106, 68755), (107, 68752), (114, 68710), (122, 68647), (128, 68578), (131, 68560), (135, 68542), (139, 68524), (149, 68452), (151, 68443), (154, 68422), (174, 68305), (176, 68296), (179, 68272), (180, 68263), (193, 68227), (203, 68170), (208, 68140), (211, 68110), (212, 68098), (214, 68077), (229, 68002), (232, 67981), (239, 67948),

Gene: Waleliano_91 Start: 68648, Stop: 67590, Start Num: 61

Candidate Starts for Waleliano_91:

(Start: 61 @68648 has 111 MA's), (76, 68534), (77, 68528), (80, 68501), (81, 68486), (82, 68477), (87, 68459), (101, 68420), (106, 68402), (114, 68357), (122, 68294), (128, 68225), (131, 68207), (135, 68189), (139, 68171), (144, 68147), (149, 68099), (151, 68090), (154, 68069), (174, 67952), (176, 67943), (179, 67919), (180, 67910), (184, 67895), (193, 67874), (203, 67817), (208, 67787), (212, 67745), (214, 67724), (229, 67649), (232, 67628), (237, 67601), (239, 67595),

Gene: Warren_50 Start: 30876, Stop: 31928, Start Num: 57

Candidate Starts for Warren_50:

(34, 30789), (Start: 57 @30876 has 6 MA's), (Start: 61 @30918 has 111 MA's), (76, 31014), (81, 31062), (108, 31152), (128, 31311), (130, 31317), (132, 31332), (144, 31374), (148, 31413), (177, 31587), (202, 31695), (220, 31815), (228, 31857), (240, 31917),

Gene: West99_85 Start: 64928, Stop: 63858, Start Num: 61

Candidate Starts for West99_85:

(Start: 61 @64928 has 111 MA's), (Start: 67 @64898 has 1 MA's), (76, 64832), (78, 64823), (80, 64799), (82, 64775), (88, 64751), (128, 64496), (130, 64490), (131, 64478), (139, 64445), (143, 64424), (150, 64367), (151, 64364), (158, 64325), (160, 64316), (164, 64286), (167, 64271), (170, 64253), (173, 64229), (177, 64208), (182, 64178), (189, 64157), (203, 64091), (204, 64088), (208, 64061), (209, 64055), (221, 63980), (226, 63944),

Gene: Wooper_81 Start: 59350, Stop: 58331, Start Num: 61

Candidate Starts for Wooper_81:

(39, 59446), (44, 59428), (56, 59392), (Start: 61 @59350 has 111 MA's), (76, 59254), (79, 59236), (80, 59221), (82, 59197), (84, 59188), (94, 59164), (99, 59146), (107, 59125), (125, 58978), (127, 58954), (128, 58948), (131, 58930), (143, 58876), (146, 58840), (154, 58795), (162, 58744), (182, 58630), (204, 58540), (208, 58513), (209, 58507), (228, 58396),

Gene: Wyborn_77 Start: 49339, Stop: 48344, Start Num: 64

Candidate Starts for Wyborn_77:

(Start: 64 @49339 has 20 MA's), (79, 49246), (86, 49192), (88, 49183), (95, 49165), (115, 49084), (125, 48985), (128, 48955), (131, 48937), (148, 48853), (149, 48844), (156, 48808), (161, 48781), (189, 48628), (196, 48595), (227, 48412),

Gene: Yago84_77 Start: 59460, Stop: 58450, Start Num: 61

Candidate Starts for Yago84_77:

(30, 59601), (41, 59538), (Start: 61 @59460 has 111 MA's), (76, 59364), (80, 59331), (92, 59289), (107, 59247), (127, 59079), (128, 59073), (130, 59067), (140, 59010), (149, 58947), (154, 58917), (160, 58890), (170, 58827), (176, 58791), (182, 58752), (204, 58662), (212, 58593), (215, 58569), (216, 58563), (236, 58470),

Gene: Yahalom_95 Start: 66769, Stop: 65657, Start Num: 52

Candidate Starts for Yahalom_95:

(24, 66889), (Start: 31 @66859 has 6 MA's), (Start: 52 @66769 has 15 MA's), (Start: 61 @66715 has 111 MA's), (Start: 67 @66685 has 1 MA's), (76, 66601), (80, 66568), (96, 66496), (114, 66424), (124,

66343), (127, 66298), (128, 66292), (130, 66286), (131, 66274), (139, 66238), (154, 66136), (158, 66118), (166, 66073), (177, 66001), (179, 65986), (185, 65959), (189, 65950), (201, 65893), (212, 65809), (215, 65785), (223, 65755),

Gene: Yinz_95 Start: 66316, Stop: 65258, Start Num: 61

Candidate Starts for Yinz_95:

(24, 66490), (Start: 31 @66460 has 6 MA's), (Start: 52 @66370 has 15 MA's), (Start: 61 @66316 has 111 MA's), (Start: 67 @66286 has 1 MA's), (76, 66202), (80, 66169), (96, 66097), (114, 66025), (124, 65944), (127, 65899), (128, 65893), (130, 65887), (131, 65875), (139, 65839), (154, 65737), (158, 65719), (166, 65674), (177, 65602), (179, 65587), (185, 65560), (189, 65551), (201, 65494), (212, 65410), (215, 65386), (223, 65356),

Gene: Zartrosa_78 Start: 50212, Stop: 49217, Start Num: 64

Candidate Starts for Zartrosa_78:

(Start: 64 @50212 has 20 MA's), (79, 50119), (88, 50056), (95, 50038), (121, 49903), (125, 49858), (127, 49834), (128, 49828), (131, 49810), (132, 49807), (146, 49732), (156, 49681), (177, 49552), (179, 49537), (189, 49501), (196, 49468), (227, 49285),

Gene: Zemanar_90 Start: 68665, Stop: 67607, Start Num: 61

Candidate Starts for Zemanar_90:

(Start: 61 @68665 has 111 MA's), (70, 68611), (71, 68593), (76, 68551), (77, 68545), (80, 68518), (81, 68503), (82, 68494), (87, 68476), (101, 68437), (106, 68419), (114, 68374), (122, 68311), (128, 68242), (131, 68224), (135, 68206), (139, 68188), (149, 68116), (151, 68107), (154, 68086), (174, 67969), (176, 67960), (179, 67936), (180, 67927), (184, 67912), (193, 67891), (203, 67834), (208, 67804), (211, 67774), (212, 67762), (214, 67741), (229, 67666), (232, 67645), (239, 67612),