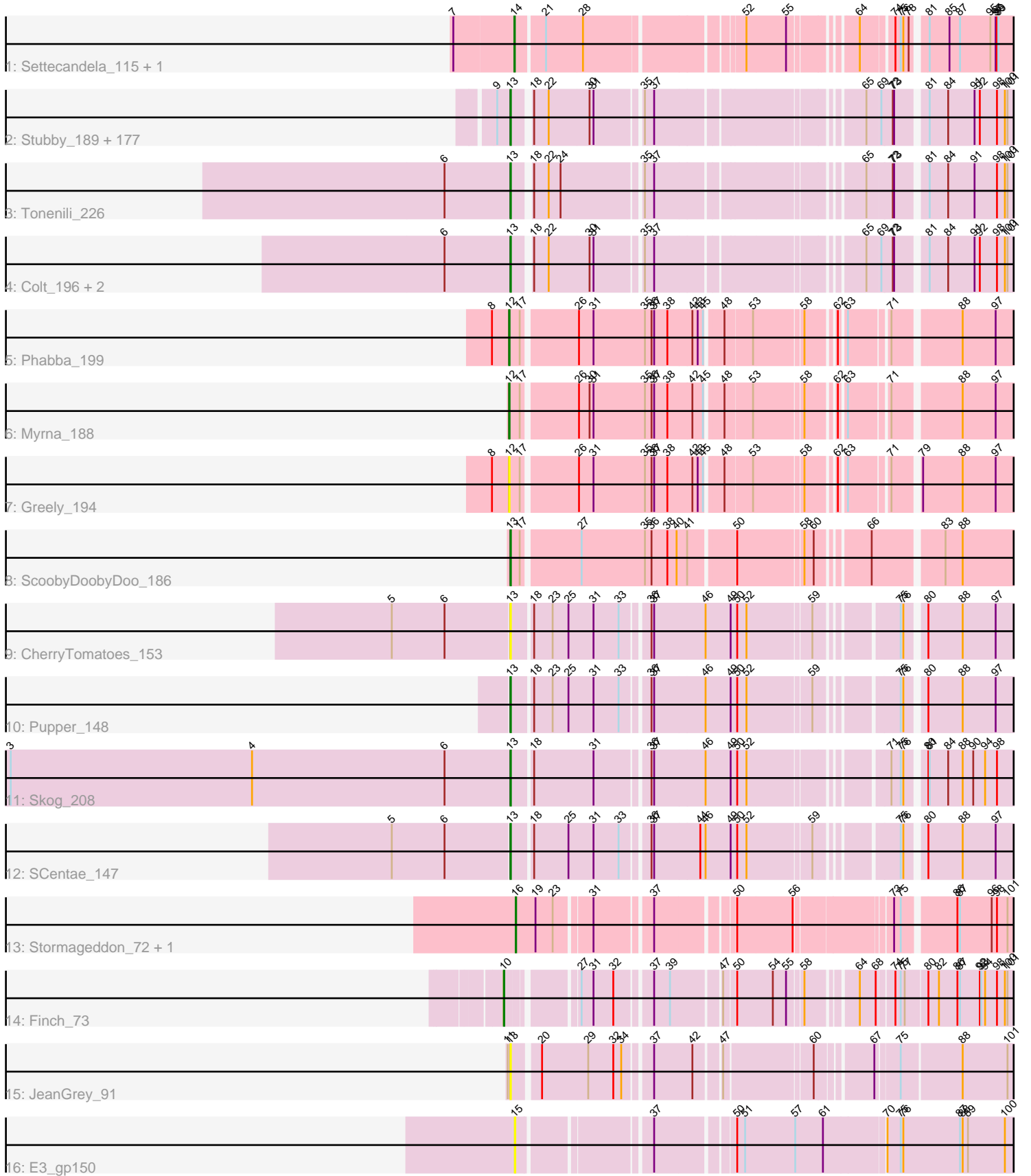


Zoomed Pham 157605



Note: Tracks are now grouped by subcluster and scaled. Switching in subcluster is indicated by changes in track color. Track scale is now set by default to display the region 30 bp upstream of start 1 to 30 bp downstream of the last possible start. If this default region is judged to be packed too tightly with annotated starts, the track will be further scaled to only show that region of the ORF with annotated starts. This action will be indicated by adding "Zoomed" to the title. For starts, yellow indicates the location of called starts comprised solely of Glimmer/GeneMark auto-annotations, green indicates the location of called starts with at least 1 manual gene annotation.

Pham 157605 Report

This analysis was run 04/13/24 on database version 558.

Pham number 157605 has 197 members, 19 are drafts.

Phages represented in each track:

- Track 1 : Settecandela_115, Phrappuccino_115
- Track 2 : Stubby_189, Amataga_206, Burrough_207, Napoleon13_202, InigoMontoya_208, Bigswole_210, CindyLou_206, Willis_206, Spec_200, Breeniome_204, Shelob_206, Ghost_205, NuevoMundo_208, Cactojaque_200, Bonray_207, Blackbrain_202, MikeLiesIn_207, Cali_198, Derek_202, RoMag_200, JPickles_201, Rizal_197, LifeSavor_204, SilverDipper_209, Basquiat_202, Littleton_208, Yassified_202, Patter_206, Rahel_206, I3_215, Latch_205, SmallFry_205, Ngannou_202, LolaVinca_203, MoMoMixon_203, Babyland_208, Astraea_199, Concombre_210, Teardrop_202, Daffodil_210, Bipolarisk_203, Quasimodo_207, Khaleesi_204, Morizzled23_202, Grasshills_213, Naval22_210, Dietrick_194, Ading_206, BadAgartude_199, Dandelion_213, Darko_204, YemiJoy2021_206, Phlegm_209, Norm_205, Pio_213, Janiyra_208, Capablanca_210, Megamind_202, Audrick_207, ZygoTaiga_202, Koguma_204, Erdmann_206, Phusco_203, Gizmo_211, InterFolia_208, ChickenPhender_201, Zeenon_207, Issimir_201, Melpomini_200, Salacia_205, Gabriel_208, Shaq nato_196, Turret_198, JayJay_203, Bread_200, EmToTheThree_205, ET08_193, ErnieJ_198, Chargie21_202, FrayBell_208, Mikro_201, Delylah_207, Catera_198, Delilah_203, Lukilu_196, ArcherS7_205, Maby2021_205, ChaylaJr_202, Ava3_204, BananaFence_202, EasyJones_208, DrPhinkDaddy_202, EggyFarm_214, StubbySaigey_210, Asterius_201, FudgeTart_200, Sauce_201, Iota_200, EmmaElysia_208, NoodleTree_211, Momo_206, Flabslab_200, Alice_192, Pleione_209, Mangeria_206, DirtMonster_198, Shrimp_207, StephanieG_201, BackyardAgain_200, BigCity_214, TinyTim_203, Chomp_204, Spud_199, Grungle_189, Ronan_201, Wally_203, Drazdys_203, Gamgam_206, Yucca_205, Jemmno_204, Pier_206, Jaygup_201, Bxz1_195, Phox_206, QBert_197, BeanWater_197, McGee_204, Atlantean_205, Shnickers_203, Zalkecks_204, Bangla1971_205, HyRo_193, Naija_206, DTDevon_207, FoxtrotP1_203, Trinitium_201, Izajani_203, Ewok_204, Tortoise16_203, LordLeafolot_207, NedWong_204, JulietS_198, Kamryn_204, Pivoine_206, YoungMoneyMata_203, Sprinklers_203, Loanshark_202, LRRHood_198, Jessibeth14_205, LinStu_204, CharlieB_199, PurduePete_205, Sebata_206, Jedediah_205, Lee7_205, Essence_202, Specks_209, ParkTD_204, SrishMeg2525_202, Shifa_182, Fludd_205, IkeLoa_197, ShiaLabeouf_202, Roots515_207, Guwapp_200, McWolfish_202, Nidhogg_206, Adlitam_204, Tyke_203, ValleyTerrace_206, Kboogie_209, Matsumoto_204, ScottMcG_198, JustHall_199, Nappy_206, Caravan_196, Rabinovish_198, Pinkcreek_189
- Track 3 : Tonenili_226

- Track 4 : Colt_196, Cane17_196, Blubba_201
- Track 5 : Phabba_199
- Track 6 : Myrna_188
- Track 7 : Greely_194
- Track 8 : ScoobyDoobyDoo_186
- Track 9 : CherryTomatoes_153
- Track 10 : Pupper_148
- Track 11 : Skog_208
- Track 12 : SCentae_147
- Track 13 : Stormageddon_72, RedWattleHog_75
- Track 14 : Finch_73
- Track 15 : JeanGrey_91
- Track 16 : E3_gp150

Summary of Final Annotations (See graph section above for start numbers):

The start number called the most often in the published annotations is 13, it was called in 171 of the 178 non-draft genes in the pham.

Genes that call this "Most Annotated" start:

- Ading_206, Adlitam_204, Alice_192, Amataga_206, ArcherS7_205, Asterius_201, Astraea_199, Atlantean_205, Audrick_207, Ava3_204, Babyland_208, BackyardAgain_200, BadAgartude_199, BananaFence_202, Bangla1971_205, Basquiat_202, BeanWater_197, BigCity_214, Bigswole_210, Bipolarisk_203, Blackbrain_202, Blubba_201, Bonray_207, Bread_200, Breeniome_204, Burrough_207, Bxz1_195, Cactojaque_200, Cali_198, Cane17_196, Capablanca_210, Caravan_196, Catera_198, Chargie21_202, CharlieB_199, ChaylaJr_202, CherryTomatoes_153, ChickenPhender_201, Chomp_204, CindyLou_206, Colt_196, Concombre_210, DTDevon_207, Daffodil_210, Dandelion_213, Darko_204, Delilah_203, Delylah_207, Derek_202, Dietrick_194, DirtMonster_198, DrPhinkDaddy_202, Drazdys_203, ET08_193, EasyJones_208, EggFarm_214, EmToTheThree_205, EmmaElysia_208, Erdmann_206, ErnieJ_198, Essence_202, Ewok_204, Flabslab_200, Fludd_205, FoxtrotP1_203, FrayBell_208, FudgeTart_200, Gabriel_208, Gamgam_206, Ghost_205, Gizmo_211, Grasshills_213, Grungle_189, Guwapp_200, HyRo_193, I3_215, IkeLoa_197, InigoMontoya_208, InterFolia_208, Iota_200, Issimir_201, Izajani_203, JPickles_201, Janiyra_208, JayJay_203, Jaygup_201, JeanGrey_91, Jedediah_205, Jemmno_204, Jessibeth14_205, JulietS_198, JustHall_199, Kamryn_204, Kboogie_209, Khaleesi_204, Koguma_204, LRRHood_198, Latch_205, Lee7_205, LifeSavor_204, LinStu_204, Littleton_208, Loanshark_202, LolaVinca_203, LordLeafolot_207, Lukilu_196, Maby2021_205, Mangeria_206, Matsumoto_204, McGee_204, McWolfish_202, Megamind_202, Melpomini_200, MikeLiesIn_207, Mikro_201, MoMoMixon_203, Momo_206, Morizzled23_202, Naija_206, Napoleon13_202, Nappy_206, Naval22_210, NedWong_204, Ngannou_202, Nidhogg_206, NoodleTree_211, Norm_205, NuevoMundo_208, ParkTD_204, Patter_206, Phlegm_209, Phox_206, Phusco_203, Pier_206, Pinkcreek_189, Pio_213, Pivoine_206, Pleione_209, Pupper_148, PurduePete_205, QBert_197, Quasimodo_207, Rabinovish_198, Rahel_206, Rizal_197, RoMag_200, Ronan_201, Roots515_207, SCentae_147, Salacia_205, Sauce_201, ScoobyDoobyDoo_186, ScottMcG_198, Sebata_206, Shaqnato_196, Shelob_206, ShiaLabeouf_202,

Shifa_182, Shnickers_203, Shrimp_207, SilverDipper_209, Skog_208, SmallFry_205, Spec_200, Specks_209, Sprinklers_203, Spud_199, SrishMeg2525_202, StephanieG_201, StubbySaigey_210, Stubby_189, Teardrop_202, TinyTim_203, Tonenili_226, Tortoise16_203, Trinitium_201, Turret_198, Tyke_203, ValleyTerrace_206, Wally_203, Willis_206, Yassified_202, YemiJoy2021_206, YoungMoneyMata_203, Yucca_205, Zalkecks_204, Zeenon_207, ZygoTaiga_202,

Genes that have the "Most Annotated" start but do not call it:

-

Genes that do not have the "Most Annotated" start:

• E3_gp150, Finch_73, Greely_194, Myrna_188, Phabba_199, Phrappuccino_115, RedWattleHog_75, Settecandela_115, Stormageddon_72,

Summary by start number:

Start 10:

- Found in 1 of 197 (0.5%) of genes in pham
- Manual Annotations of this start: 1 of 178
- Called 100.0% of time when present
- Phage (with cluster) where this start called: Finch_73 (singleton),

Start 12:

- Found in 3 of 197 (1.5%) of genes in pham
- Manual Annotations of this start: 2 of 178
- Called 100.0% of time when present
- Phage (with cluster) where this start called: Greely_194 (C2), Myrna_188 (C2), Phabba_199 (C2),

Start 13:

- Found in 188 of 197 (95.4%) of genes in pham
- Manual Annotations of this start: 171 of 178
- Called 100.0% of time when present
- Phage (with cluster) where this start called: Ading_206 (C1), Adlitam_204 (C1), Alice_192 (C1), Amataga_206 (C1), ArcherS7_205 (C1), Asterius_201 (C1), Astraea_199 (C1), Atlantean_205 (C1), Audrick_207 (C1), Ava3_204 (C1), Babyland_208 (C1), BackyardAgain_200 (C1), BadAgartude_199 (C1), BananaFence_202 (C1), Bangla1971_205 (C1), Basquiat_202 (C1), BeanWater_197 (C1), BigCity_214 (C1), Bigswole_210 (C1), Bipolarisk_203 (C1), Blackbrain_202 (C1), Blubba_201 (C1), Bonray_207 (C1), Bread_200 (C1), Breeniome_204 (C1), Burrough_207 (C1), Bxz1_195 (C1), Cactojaque_200 (C1), Cali_198 (C1), Cane17_196 (C1), Capablanca_210 (C1), Caravan_196 (C1), Catera_198 (C1), Chargie21_202 (C1), CharlieB_199 (C1), ChaylaJr_202 (C1), CherryTomatoes_153 (DO), ChickenPhender_201 (C1), Chomp_204 (C1), CindyLou_206 (C1), Colt_196 (C1), Concombre_210 (C1), DTDevon_207 (C1), Daffodil_210 (C1), Dandelion_213 (C1), Darko_204 (C1), Delilah_203 (C1), Delylah_207 (C1), Derek_202 (C1), Dietrick_194 (C1), DirtMonster_198 (C1), DrPhinkDaddy_202 (C1), Drazdys_203 (C1), ET08_193 (C1), EasyJones_208 (C1), EggyFarm_214 (C1), EmToTheThree_205 (C1), EmmaElysia_208 (C1), Erdmann_206 (C1), ErnieJ_198 (C1), Essence_202 (C1), Ewok_204 (C1), Flabslab_200 (C1), Fludd_205 (C1), FoxtrotP1_203 (C1), FrayBell_208 (C1), FudgeTart_200 (C1), Gabriel_208 (C1), Gamgam_206 (C1), Ghost_205 (C1), Gizmo_211 (C1), Grasshills_213 (C1), Grungle_189 (C1), Guwapp_200 (C1), HyRo_193 (C1), I3_215 (C1), IkeLoa_197

(C1), InigoMontoya_208 (C1), InterFolia_208 (C1), Iota_200 (C1), Issimir_201 (C1), Izajani_203 (C1), JPickles_201 (C1), Janiyr_208 (C1), JayJay_203 (C1), Jaygup_201 (C1), JeanGrey_91 (singleton), Jedediah_205 (C1), Jemmno_204 (C1), Jessibeth14_205 (C1), JulietS_198 (C1), JustHall_199 (C1), Kamryn_204 (C1), Kboogie_209 (C1), Khaleesi_204 (C1), Koguma_204 (C1), LRRHood_198 (C1), Latch_205 (C1), Lee7_205 (C1), LifeSavor_204 (C1), LinStu_204 (C1), Littleton_208 (C1), Loanshark_202 (C1), LolaVinca_203 (C1), LordLeafolot_207 (C1), Lukilu_196 (C1), Maby2021_205 (C1), Mangeria_206 (C1), Matsumoto_204 (C1), McGee_204 (C1), McWolfish_202 (C1), Megamind_202 (C1), Melpomini_200 (C1), MikeLiesIn_207 (C1), Mikro_201 (C1), MoMoMixon_203 (C1), Momo_206 (C1), Morizzled23_202 (C1), Naija_206 (C1), Napoleon13_202 (C1), Nappy_206 (C1), Naval22_210 (C1), NedWong_204 (C1), Ngannou_202 (C1), Nidhogg_206 (C1), NoodleTree_211 (C1), Norm_205 (C1), NuevoMundo_208 (C1), ParkTD_204 (C1), Patter_206 (C1), Phlegm_209 (C1), Phox_206 (C1), Phusco_203 (C1), Pier_206 (C1), Pinkcreek_189 (C1), Pio_213 (C1), Pivoine_206 (C1), Pleione_209 (C1), Pupper_148 (DO), PurduePete_205 (C1), QBert_197 (C1), Quasimodo_207 (C1), Rabinovich_198 (C1), Rahel_206 (C1), Rizal_197 (C1), RoMag_200 (C1), Ronan_201 (C1), Roots515_207 (C1), SCentae_147 (DO), Salacia_205 (C1), Sauce_201 (C1), ScoobyDoobyDoo_186 (C2), ScottMcG_198 (C1), Sebata_206 (C1), Shaqnato_196 (C1), Shelob_206 (C1), ShiaLabeouf_202 (C1), Shifa_182 (C1), Shnickers_203 (C1), Shrimp_207 (C1), SilverDipper_209 (C1), Skog_208 (DO), SmallFry_205 (C1), Spec_200 (C1), Specks_209 (C1), Sprinklers_203 (C1), Spud_199 (C1), SrishMeg2525_202 (C1), StephanieG_201 (C1), StubbySaigey_210 (C1), Stubby_189 (C1), Teardrop_202 (C1), TinyTim_203 (C1), Tonenili_226 (C1), Tortoise16_203 (C1), Trinitium_201 (C1), Turret_198 (C1), Tyke_203 (C1), ValleyTerrace_206 (C1), Wally_203 (C1), Willis_206 (C1), Yassified_202 (C1), YemiJoy2021_206 (C1), YoungMoneyMata_203 (C1), Yucca_205 (C1), Zalkecks_204 (C1), Zeenon_207 (C1), ZygoTaiga_202 (C1),

Start 14:

- Found in 2 of 197 (1.0%) of genes in pham
- Manual Annotations of this start: 2 of 178
- Called 100.0% of time when present
- Phage (with cluster) where this start called: Phrappuccino_115 (AA), Settecandela_115 (AA),

Start 15:

- Found in 1 of 197 (0.5%) of genes in pham
- No Manual Annotations of this start.
- Called 100.0% of time when present
- Phage (with cluster) where this start called: E3_gp150 (singleton),

Start 16:

- Found in 2 of 197 (1.0%) of genes in pham
- Manual Annotations of this start: 2 of 178
- Called 100.0% of time when present
- Phage (with cluster) where this start called: RedWattleHog_75 (DX), Stormageddon_72 (DX),

Summary by clusters:

There are 6 clusters represented in this pham: AA, DO, singleton, DX, C2, C1,

Info for manual annotations of cluster AA:

- Start number 14 was manually annotated 2 times for cluster AA.

Info for manual annotations of cluster C1:

- Start number 13 was manually annotated 167 times for cluster C1.

Info for manual annotations of cluster C2:

- Start number 12 was manually annotated 2 times for cluster C2.
- Start number 13 was manually annotated 1 time for cluster C2.

Info for manual annotations of cluster DO:

- Start number 13 was manually annotated 3 times for cluster DO.

Info for manual annotations of cluster DX:

- Start number 16 was manually annotated 2 times for cluster DX.

Gene Information:

Gene: Ading_206 Start: 110649, Stop: 111722, Start Num: 13

Candidate Starts for Ading_206:

(9, 110622), (Start: 13 @110649 has 171 MA's), (18, 110682), (22, 110715), (30, 110805), (31, 110814), (35, 110910), (37, 110931), (65, 111339), (69, 111369), (72, 111393), (73, 111396), (81, 111456), (84, 111498), (91, 111558), (92, 111570), (98, 111609), (100, 111627), (101, 111633), (102, 111657), (108, 111693), (109, 111702), (112, 111717),

Gene: Adlitam_204 Start: 109253, Stop: 110326, Start Num: 13

Candidate Starts for Adlitam_204:

(9, 109226), (Start: 13 @109253 has 171 MA's), (18, 109286), (22, 109319), (30, 109409), (31, 109418), (35, 109514), (37, 109535), (65, 109943), (69, 109973), (72, 109997), (73, 110000), (81, 110060), (84, 110102), (91, 110162), (92, 110174), (98, 110213), (100, 110231), (101, 110237), (102, 110261), (108, 110297), (109, 110306), (112, 110321),

Gene: Alice_192 Start: 109221, Stop: 110294, Start Num: 13

Candidate Starts for Alice_192:

(9, 109194), (Start: 13 @109221 has 171 MA's), (18, 109254), (22, 109287), (30, 109377), (31, 109386), (35, 109482), (37, 109503), (65, 109911), (69, 109941), (72, 109965), (73, 109968), (81, 110028), (84, 110070), (91, 110130), (92, 110142), (98, 110181), (100, 110199), (101, 110205), (102, 110229), (108, 110265), (109, 110274), (112, 110289),

Gene: Amataga_206 Start: 109065, Stop: 110138, Start Num: 13

Candidate Starts for Amataga_206:

(9, 109038), (Start: 13 @109065 has 171 MA's), (18, 109098), (22, 109131), (30, 109221), (31, 109230), (35, 109326), (37, 109347), (65, 109755), (69, 109785), (72, 109809), (73, 109812), (81, 109872), (84, 109914), (91, 109974), (92, 109986), (98, 110025), (100, 110043), (101, 110049), (102, 110073), (108, 110109), (109, 110118), (112, 110133),

Gene: ArcherS7_205 Start: 110107, Stop: 111180, Start Num: 13

Candidate Starts for ArcherS7_205:

(9, 110080), (Start: 13 @110107 has 171 MA's), (18, 110140), (22, 110173), (30, 110263), (31, 110272), (35, 110368), (37, 110389), (65, 110797), (69, 110827), (72, 110851), (73, 110854), (81, 110914), (84, 110956), (91, 111016), (92, 111028), (98, 111067), (100, 111085), (101, 111091), (102,

111115), (108, 111151), (109, 111160), (112, 111175),

Gene: Asterius_201 Start: 109474, Stop: 110547, Start Num: 13

Candidate Starts for Asterius_201:

(9, 109447), (Start: 13 @109474 has 171 MA's), (18, 109507), (22, 109540), (30, 109630), (31, 109639), (35, 109735), (37, 109756), (65, 110164), (69, 110194), (72, 110218), (73, 110221), (81, 110281), (84, 110323), (91, 110383), (92, 110395), (98, 110434), (100, 110452), (101, 110458), (102, 110482), (108, 110518), (109, 110527), (112, 110542),

Gene: Astraea_199 Start: 108669, Stop: 109742, Start Num: 13

Candidate Starts for Astraea_199:

(9, 108642), (Start: 13 @108669 has 171 MA's), (18, 108702), (22, 108735), (30, 108825), (31, 108834), (35, 108930), (37, 108951), (65, 109359), (69, 109389), (72, 109413), (73, 109416), (81, 109476), (84, 109518), (91, 109578), (92, 109590), (98, 109629), (100, 109647), (101, 109653), (102, 109677), (108, 109713), (109, 109722), (112, 109737),

Gene: Atlantean_205 Start: 109065, Stop: 110138, Start Num: 13

Candidate Starts for Atlantean_205:

(9, 109038), (Start: 13 @109065 has 171 MA's), (18, 109098), (22, 109131), (30, 109221), (31, 109230), (35, 109326), (37, 109347), (65, 109755), (69, 109785), (72, 109809), (73, 109812), (81, 109872), (84, 109914), (91, 109974), (92, 109986), (98, 110025), (100, 110043), (101, 110049), (102, 110073), (108, 110109), (109, 110118), (112, 110133),

Gene: Audrick_207 Start: 108955, Stop: 110028, Start Num: 13

Candidate Starts for Audrick_207:

(9, 108928), (Start: 13 @108955 has 171 MA's), (18, 108988), (22, 109021), (30, 109111), (31, 109120), (35, 109216), (37, 109237), (65, 109645), (69, 109675), (72, 109699), (73, 109702), (81, 109762), (84, 109804), (91, 109864), (92, 109876), (98, 109915), (100, 109933), (101, 109939), (102, 109963), (108, 109999), (109, 110008), (112, 110023),

Gene: Ava3_204 Start: 109499, Stop: 110572, Start Num: 13

Candidate Starts for Ava3_204:

(9, 109472), (Start: 13 @109499 has 171 MA's), (18, 109532), (22, 109565), (30, 109655), (31, 109664), (35, 109760), (37, 109781), (65, 110189), (69, 110219), (72, 110243), (73, 110246), (81, 110306), (84, 110348), (91, 110408), (92, 110420), (98, 110459), (100, 110477), (101, 110483), (102, 110507), (108, 110543), (109, 110552), (112, 110567),

Gene: Babyland_208 Start: 109842, Stop: 110915, Start Num: 13

Candidate Starts for Babyland_208:

(9, 109815), (Start: 13 @109842 has 171 MA's), (18, 109875), (22, 109908), (30, 109998), (31, 110007), (35, 110103), (37, 110124), (65, 110532), (69, 110562), (72, 110586), (73, 110589), (81, 110649), (84, 110691), (91, 110751), (92, 110763), (98, 110802), (100, 110820), (101, 110826), (102, 110850), (108, 110886), (109, 110895), (112, 110910),

Gene: BackyardAgain_200 Start: 107751, Stop: 108824, Start Num: 13

Candidate Starts for BackyardAgain_200:

(9, 107724), (Start: 13 @107751 has 171 MA's), (18, 107784), (22, 107817), (30, 107907), (31, 107916), (35, 108012), (37, 108033), (65, 108441), (69, 108471), (72, 108495), (73, 108498), (81, 108558), (84, 108600), (91, 108660), (92, 108672), (98, 108711), (100, 108729), (101, 108735), (102, 108759), (108, 108795), (109, 108804), (112, 108819),

Gene: BadAgartude_199 Start: 109164, Stop: 110237, Start Num: 13

Candidate Starts for BadAgartude_199:

(9, 109137), (Start: 13 @109164 has 171 MA's), (18, 109197), (22, 109230), (30, 109320), (31, 109329), (35, 109425), (37, 109446), (65, 109854), (69, 109884), (72, 109908), (73, 109911), (81, 109971), (84, 110013), (91, 110073), (92, 110085), (98, 110124), (100, 110142), (101, 110148), (102, 110172), (108, 110208), (109, 110217), (112, 110232),

Gene: BananaFence_202 Start: 109298, Stop: 110371, Start Num: 13

Candidate Starts for BananaFence_202:

(9, 109271), (Start: 13 @109298 has 171 MA's), (18, 109331), (22, 109364), (30, 109454), (31, 109463), (35, 109559), (37, 109580), (65, 109988), (69, 110018), (72, 110042), (73, 110045), (81, 110105), (84, 110147), (91, 110207), (92, 110219), (98, 110258), (100, 110276), (101, 110282), (102, 110306), (108, 110342), (109, 110351), (112, 110366),

Gene: Bangla1971_205 Start: 109071, Stop: 110144, Start Num: 13

Candidate Starts for Bangla1971_205:

(9, 109044), (Start: 13 @109071 has 171 MA's), (18, 109104), (22, 109137), (30, 109227), (31, 109236), (35, 109332), (37, 109353), (65, 109761), (69, 109791), (72, 109815), (73, 109818), (81, 109878), (84, 109920), (91, 109980), (92, 109992), (98, 110031), (100, 110049), (101, 110055), (102, 110079), (108, 110115), (109, 110124), (112, 110139),

Gene: Basquiat_202 Start: 108577, Stop: 109650, Start Num: 13

Candidate Starts for Basquiat_202:

(9, 108550), (Start: 13 @108577 has 171 MA's), (18, 108610), (22, 108643), (30, 108733), (31, 108742), (35, 108838), (37, 108859), (65, 109267), (69, 109297), (72, 109321), (73, 109324), (81, 109384), (84, 109426), (91, 109486), (92, 109498), (98, 109537), (100, 109555), (101, 109561), (102, 109585), (108, 109621), (109, 109630), (112, 109645),

Gene: BeanWater_197 Start: 109103, Stop: 110176, Start Num: 13

Candidate Starts for BeanWater_197:

(9, 109076), (Start: 13 @109103 has 171 MA's), (18, 109136), (22, 109169), (30, 109259), (31, 109268), (35, 109364), (37, 109385), (65, 109793), (69, 109823), (72, 109847), (73, 109850), (81, 109910), (84, 109952), (91, 110012), (92, 110024), (98, 110063), (100, 110081), (101, 110087), (102, 110111), (108, 110147), (109, 110156), (112, 110171),

Gene: BigCity_214 Start: 112674, Stop: 113747, Start Num: 13

Candidate Starts for BigCity_214:

(9, 112647), (Start: 13 @112674 has 171 MA's), (18, 112707), (22, 112740), (30, 112830), (31, 112839), (35, 112935), (37, 112956), (65, 113364), (69, 113394), (72, 113418), (73, 113421), (81, 113481), (84, 113523), (91, 113583), (92, 113595), (98, 113634), (100, 113652), (101, 113658), (102, 113682), (108, 113718), (109, 113727), (112, 113742),

Gene: Bigswole_210 Start: 112525, Stop: 113598, Start Num: 13

Candidate Starts for Bigswole_210:

(9, 112498), (Start: 13 @112525 has 171 MA's), (18, 112558), (22, 112591), (30, 112681), (31, 112690), (35, 112786), (37, 112807), (65, 113215), (69, 113245), (72, 113269), (73, 113272), (81, 113332), (84, 113374), (91, 113434), (92, 113446), (98, 113485), (100, 113503), (101, 113509), (102, 113533), (108, 113569), (109, 113578), (112, 113593),

Gene: Bipolarisk_203 Start: 109768, Stop: 110841, Start Num: 13

Candidate Starts for Bipolarisk_203:

(9, 109741), (Start: 13 @109768 has 171 MA's), (18, 109801), (22, 109834), (30, 109924), (31, 109933), (35, 110029), (37, 110050), (65, 110458), (69, 110488), (72, 110512), (73, 110515), (81, 110575), (84, 110617), (91, 110677), (92, 110689), (98, 110728), (100, 110746), (101, 110752), (102, 110776), (108, 110812), (109, 110821), (112, 110836),

Gene: Blackbrain_202 Start: 109662, Stop: 110735, Start Num: 13

Candidate Starts for Blackbrain_202:

(9, 109635), (Start: 13 @109662 has 171 MA's), (18, 109695), (22, 109728), (30, 109818), (31, 109827), (35, 109923), (37, 109944), (65, 110352), (69, 110382), (72, 110406), (73, 110409), (81, 110469), (84, 110511), (91, 110571), (92, 110583), (98, 110622), (100, 110640), (101, 110646), (102, 110670), (108, 110706), (109, 110715), (112, 110730),

Gene: Blubba_201 Start: 112787, Stop: 113860, Start Num: 13

Candidate Starts for Blubba_201:

(6, 112637), (Start: 13 @112787 has 171 MA's), (18, 112820), (22, 112853), (30, 112943), (31, 112952), (35, 113048), (37, 113069), (65, 113477), (69, 113507), (72, 113531), (73, 113534), (81, 113594), (84, 113636), (91, 113696), (92, 113708), (98, 113747), (100, 113765), (101, 113771), (102, 113795), (108, 113831), (109, 113840), (112, 113855),

Gene: Bonray_207 Start: 111170, Stop: 112243, Start Num: 13

Candidate Starts for Bonray_207:

(9, 111143), (Start: 13 @111170 has 171 MA's), (18, 111203), (22, 111236), (30, 111326), (31, 111335), (35, 111431), (37, 111452), (65, 111860), (69, 111890), (72, 111914), (73, 111917), (81, 111977), (84, 112019), (91, 112079), (92, 112091), (98, 112130), (100, 112148), (101, 112154), (102, 112178), (108, 112214), (109, 112223), (112, 112238),

Gene: Bread_200 Start: 109168, Stop: 110241, Start Num: 13

Candidate Starts for Bread_200:

(9, 109141), (Start: 13 @109168 has 171 MA's), (18, 109201), (22, 109234), (30, 109324), (31, 109333), (35, 109429), (37, 109450), (65, 109858), (69, 109888), (72, 109912), (73, 109915), (81, 109975), (84, 110017), (91, 110077), (92, 110089), (98, 110128), (100, 110146), (101, 110152), (102, 110176), (108, 110212), (109, 110221), (112, 110236),

Gene: Breeniome_204 Start: 108622, Stop: 109695, Start Num: 13

Candidate Starts for Breeniome_204:

(9, 108595), (Start: 13 @108622 has 171 MA's), (18, 108655), (22, 108688), (30, 108778), (31, 108787), (35, 108883), (37, 108904), (65, 109312), (69, 109342), (72, 109366), (73, 109369), (81, 109429), (84, 109471), (91, 109531), (92, 109543), (98, 109582), (100, 109600), (101, 109606), (102, 109630), (108, 109666), (109, 109675), (112, 109690),

Gene: Burrough_207 Start: 110938, Stop: 112011, Start Num: 13

Candidate Starts for Burrough_207:

(9, 110911), (Start: 13 @110938 has 171 MA's), (18, 110971), (22, 111004), (30, 111094), (31, 111103), (35, 111199), (37, 111220), (65, 111628), (69, 111658), (72, 111682), (73, 111685), (81, 111745), (84, 111787), (91, 111847), (92, 111859), (98, 111898), (100, 111916), (101, 111922), (102, 111946), (108, 111982), (109, 111991), (112, 112006),

Gene: Bxz1_195 Start: 112137, Stop: 113210, Start Num: 13

Candidate Starts for Bxz1_195:

(9, 112110), (Start: 13 @112137 has 171 MA's), (18, 112170), (22, 112203), (30, 112293), (31, 112302), (35, 112398), (37, 112419), (65, 112827), (69, 112857), (72, 112881), (73, 112884), (81, 112944), (84, 112986), (91, 113046), (92, 113058), (98, 113097), (100, 113115), (101, 113121), (102, 113145), (108, 113181), (109, 113190), (112, 113205),

Gene: Cactojaque_200 Start: 108597, Stop: 109670, Start Num: 13

Candidate Starts for Cactojaque_200:

(9, 108570), (Start: 13 @108597 has 171 MA's), (18, 108630), (22, 108663), (30, 108753), (31, 108762), (35, 108858), (37, 108879), (65, 109287), (69, 109317), (72, 109341), (73, 109344), (81, 109404), (84, 109446), (91, 109506), (92, 109518), (98, 109557), (100, 109575), (101, 109581), (102, 109605), (108, 109641), (109, 109650), (112, 109665),

Gene: Cali_198 Start: 110544, Stop: 111617, Start Num: 13

Candidate Starts for Cali_198:

(9, 110517), (Start: 13 @110544 has 171 MA's), (18, 110577), (22, 110610), (30, 110700), (31, 110709), (35, 110805), (37, 110826), (65, 111234), (69, 111264), (72, 111288), (73, 111291), (81, 111351), (84, 111393), (91, 111453), (92, 111465), (98, 111504), (100, 111522), (101, 111528), (102, 111552), (108, 111588), (109, 111597), (112, 111612),

Gene: Cane17_196 Start: 113196, Stop: 114269, Start Num: 13

Candidate Starts for Cane17_196:

(6, 113046), (Start: 13 @113196 has 171 MA's), (18, 113229), (22, 113262), (30, 113352), (31, 113361), (35, 113457), (37, 113478), (65, 113886), (69, 113916), (72, 113940), (73, 113943), (81, 114003), (84, 114045), (91, 114105), (92, 114117), (98, 114156), (100, 114174), (101, 114180), (102, 114204), (108, 114240), (109, 114249), (112, 114264),

Gene: Capablanca_210 Start: 111765, Stop: 112838, Start Num: 13

Candidate Starts for Capablanca_210:

(9, 111738), (Start: 13 @111765 has 171 MA's), (18, 111798), (22, 111831), (30, 111921), (31, 111930), (35, 112026), (37, 112047), (65, 112455), (69, 112485), (72, 112509), (73, 112512), (81, 112572), (84, 112614), (91, 112674), (92, 112686), (98, 112725), (100, 112743), (101, 112749), (102, 112773), (108, 112809), (109, 112818), (112, 112833),

Gene: Caravan_196 Start: 109885, Stop: 110958, Start Num: 13

Candidate Starts for Caravan_196:

(9, 109858), (Start: 13 @109885 has 171 MA's), (18, 109918), (22, 109951), (30, 110041), (31, 110050), (35, 110146), (37, 110167), (65, 110575), (69, 110605), (72, 110629), (73, 110632), (81, 110692), (84, 110734), (91, 110794), (92, 110806), (98, 110845), (100, 110863), (101, 110869), (102, 110893), (108, 110929), (109, 110938), (112, 110953),

Gene: Catera_198 Start: 108278, Stop: 109351, Start Num: 13

Candidate Starts for Catera_198:

(9, 108251), (Start: 13 @108278 has 171 MA's), (18, 108311), (22, 108344), (30, 108434), (31, 108443), (35, 108539), (37, 108560), (65, 108968), (69, 108998), (72, 109022), (73, 109025), (81, 109085), (84, 109127), (91, 109187), (92, 109199), (98, 109238), (100, 109256), (101, 109262), (102, 109286), (108, 109322), (109, 109331), (112, 109346),

Gene: Chargie21_202 Start: 108577, Stop: 109650, Start Num: 13

Candidate Starts for Chargie21_202:

(9, 108550), (Start: 13 @108577 has 171 MA's), (18, 108610), (22, 108643), (30, 108733), (31, 108742), (35, 108838), (37, 108859), (65, 109267), (69, 109297), (72, 109321), (73, 109324), (81, 109384), (84, 109426), (91, 109486), (92, 109498), (98, 109537), (100, 109555), (101, 109561), (102, 109585), (108, 109621), (109, 109630), (112, 109645),

Gene: CharlieB_199 Start: 109305, Stop: 110378, Start Num: 13

Candidate Starts for CharlieB_199:

(9, 109278), (Start: 13 @109305 has 171 MA's), (18, 109338), (22, 109371), (30, 109461), (31, 109470), (35, 109566), (37, 109587), (65, 109995), (69, 110025), (72, 110049), (73, 110052), (81, 110112), (84, 110154), (91, 110214), (92, 110226), (98, 110265), (100, 110283), (101, 110289), (102, 110313), (108, 110349), (109, 110358), (112, 110373),

Gene: ChaylaJr_202 Start: 109005, Stop: 110078, Start Num: 13

Candidate Starts for ChaylaJr_202:

(9, 108978), (Start: 13 @109005 has 171 MA's), (18, 109038), (22, 109071), (30, 109161), (31, 109170), (35, 109266), (37, 109287), (65, 109695), (69, 109725), (72, 109749), (73, 109752), (81, 109812), (84, 109854), (91, 109914), (92, 109926), (98, 109965), (100, 109983), (101, 109989), (102, 110013), (108, 110049), (109, 110058), (112, 110073),

Gene: CherryTomatoes_153 Start: 102880, Stop: 103995, Start Num: 13

Candidate Starts for CherryTomatoes_153:

(5, 102616), (6, 102736), (Start: 13 @102880 has 171 MA's), (18, 102922), (23, 102964), (25, 103000), (31, 103057), (33, 103114), (36, 103168), (37, 103174), (46, 103288), (49, 103345), (50, 103360), (52, 103381), (59, 103516), (75, 103663), (76, 103669), (80, 103705), (88, 103783), (97, 103855), (107, 103933), (110, 103957),

Gene: ChickenPhender_201 Start: 108724, Stop: 109797, Start Num: 13

Candidate Starts for ChickenPhender_201:

(9, 108697), (Start: 13 @108724 has 171 MA's), (18, 108757), (22, 108790), (30, 108880), (31, 108889), (35, 108985), (37, 109006), (65, 109414), (69, 109444), (72, 109468), (73, 109471), (81, 109531), (84, 109573), (91, 109633), (92, 109645), (98, 109684), (100, 109702), (101, 109708), (102, 109732), (108, 109768), (109, 109777), (112, 109792),

Gene: Chomp_204 Start: 110354, Stop: 111427, Start Num: 13

Candidate Starts for Chomp_204:

(9, 110327), (Start: 13 @110354 has 171 MA's), (18, 110387), (22, 110420), (30, 110510), (31, 110519), (35, 110615), (37, 110636), (65, 111044), (69, 111074), (72, 111098), (73, 111101), (81, 111161), (84, 111203), (91, 111263), (92, 111275), (98, 111314), (100, 111332), (101, 111338), (102, 111362), (108, 111398), (109, 111407), (112, 111422),

Gene: CindyLou_206 Start: 110614, Stop: 111687, Start Num: 13

Candidate Starts for CindyLou_206:

(9, 110587), (Start: 13 @110614 has 171 MA's), (18, 110647), (22, 110680), (30, 110770), (31, 110779), (35, 110875), (37, 110896), (65, 111304), (69, 111334), (72, 111358), (73, 111361), (81, 111421), (84, 111463), (91, 111523), (92, 111535), (98, 111574), (100, 111592), (101, 111598), (102, 111622), (108, 111658), (109, 111667), (112, 111682),

Gene: Colt_196 Start: 112427, Stop: 113500, Start Num: 13

Candidate Starts for Colt_196:

(6, 112277), (Start: 13 @112427 has 171 MA's), (18, 112460), (22, 112493), (30, 112583), (31, 112592), (35, 112688), (37, 112709), (65, 113117), (69, 113147), (72, 113171), (73, 113174), (81, 113234), (84, 113276), (91, 113336), (92, 113348), (98, 113387), (100, 113405), (101, 113411), (102, 113435), (108, 113471), (109, 113480), (112, 113495),

Gene: Concombre_210 Start: 112217, Stop: 113290, Start Num: 13

Candidate Starts for Concombre_210:

(9, 112190), (Start: 13 @112217 has 171 MA's), (18, 112250), (22, 112283), (30, 112373), (31, 112382), (35, 112478), (37, 112499), (65, 112907), (69, 112937), (72, 112961), (73, 112964), (81, 113024), (84, 113066), (91, 113126), (92, 113138), (98, 113177), (100, 113195), (101, 113201), (102, 113225), (108, 113261), (109, 113270), (112, 113285),

Gene: DTDevon_207 Start: 111103, Stop: 112176, Start Num: 13

Candidate Starts for DTDevon_207:

(9, 111076), (Start: 13 @111103 has 171 MA's), (18, 111136), (22, 111169), (30, 111259), (31, 111268), (35, 111364), (37, 111385), (65, 111793), (69, 111823), (72, 111847), (73, 111850), (81, 111910), (84, 111952), (91, 112012), (92, 112024), (98, 112063), (100, 112081), (101, 112087), (102, 112111), (108, 112147), (109, 112156), (112, 112171),

Gene: Daffodil_210 Start: 110068, Stop: 111141, Start Num: 13

Candidate Starts for Daffodil_210:

(9, 110041), (Start: 13 @110068 has 171 MA's), (18, 110101), (22, 110134), (30, 110224), (31, 110233), (35, 110329), (37, 110350), (65, 110758), (69, 110788), (72, 110812), (73, 110815), (81, 110875), (84, 110917), (91, 110977), (92, 110989), (98, 111028), (100, 111046), (101, 111052), (102, 111076), (108, 111112), (109, 111121), (112, 111136),

Gene: Dandelion_213 Start: 113701, Stop: 114774, Start Num: 13

Candidate Starts for Dandelion_213:

(9, 113674), (Start: 13 @113701 has 171 MA's), (18, 113734), (22, 113767), (30, 113857), (31, 113866), (35, 113962), (37, 113983), (65, 114391), (69, 114421), (72, 114445), (73, 114448), (81, 114508), (84, 114550), (91, 114610), (92, 114622), (98, 114661), (100, 114679), (101, 114685), (102, 114709), (108, 114745), (109, 114754), (112, 114769),

Gene: Darko_204 Start: 109302, Stop: 110375, Start Num: 13

Candidate Starts for Darko_204:

(9, 109275), (Start: 13 @109302 has 171 MA's), (18, 109335), (22, 109368), (30, 109458), (31, 109467), (35, 109563), (37, 109584), (65, 109992), (69, 110022), (72, 110046), (73, 110049), (81, 110109), (84, 110151), (91, 110211), (92, 110223), (98, 110262), (100, 110280), (101, 110286), (102, 110310), (108, 110346), (109, 110355), (112, 110370),

Gene: Delilah_203 Start: 110186, Stop: 111259, Start Num: 13

Candidate Starts for Delilah_203:

(9, 110159), (Start: 13 @110186 has 171 MA's), (18, 110219), (22, 110252), (30, 110342), (31, 110351), (35, 110447), (37, 110468), (65, 110876), (69, 110906), (72, 110930), (73, 110933), (81, 110993), (84, 111035), (91, 111095), (92, 111107), (98, 111146), (100, 111164), (101, 111170), (102, 111194), (108, 111230), (109, 111239), (112, 111254),

Gene: Delylah_207 Start: 110475, Stop: 111548, Start Num: 13

Candidate Starts for Delylah_207:

(9, 110448), (Start: 13 @110475 has 171 MA's), (18, 110508), (22, 110541), (30, 110631), (31, 110640), (35, 110736), (37, 110757), (65, 111165), (69, 111195), (72, 111219), (73, 111222), (81, 111282), (84, 111324), (91, 111384), (92, 111396), (98, 111435), (100, 111453), (101, 111459), (102, 111483), (108, 111519), (109, 111528), (112, 111543),

Gene: Derek_202 Start: 109631, Stop: 110704, Start Num: 13

Candidate Starts for Derek_202:

(9, 109604), (Start: 13 @109631 has 171 MA's), (18, 109664), (22, 109697), (30, 109787), (31, 109796), (35, 109892), (37, 109913), (65, 110321), (69, 110351), (72, 110375), (73, 110378), (81, 110438), (84, 110480), (91, 110540), (92, 110552), (98, 110591), (100, 110609), (101, 110615), (102, 110639), (108, 110675), (109, 110684), (112, 110699),

Gene: Dietrick_194 Start: 108307, Stop: 109380, Start Num: 13

Candidate Starts for Dietrick_194:

(9, 108280), (Start: 13 @108307 has 171 MA's), (18, 108340), (22, 108373), (30, 108463), (31, 108472), (35, 108568), (37, 108589), (65, 108997), (69, 109027), (72, 109051), (73, 109054), (81, 109114), (84, 109156), (91, 109216), (92, 109228), (98, 109267), (100, 109285), (101, 109291), (102, 109315), (108, 109351), (109, 109360), (112, 109375),

Gene: DirtMonster_198 Start: 109547, Stop: 110620, Start Num: 13

Candidate Starts for DirtMonster_198:

(9, 109520), (Start: 13 @109547 has 171 MA's), (18, 109580), (22, 109613), (30, 109703), (31, 109712), (35, 109808), (37, 109829), (65, 110237), (69, 110267), (72, 110291), (73, 110294), (81, 110354), (84, 110396), (91, 110456), (92, 110468), (98, 110507), (100, 110525), (101, 110531), (102, 110555), (108, 110591), (109, 110600), (112, 110615),

Gene: DrPhinkDaddy_202 Start: 110846, Stop: 111919, Start Num: 13

Candidate Starts for DrPhinkDaddy_202:

(9, 110819), (Start: 13 @110846 has 171 MA's), (18, 110879), (22, 110912), (30, 111002), (31, 111011), (35, 111107), (37, 111128), (65, 111536), (69, 111566), (72, 111590), (73, 111593), (81, 111653), (84, 111695), (91, 111755), (92, 111767), (98, 111806), (100, 111824), (101, 111830), (102, 111854), (108, 111890), (109, 111899), (112, 111914),

Gene: Drazdys_203 Start: 109748, Stop: 110821, Start Num: 13

Candidate Starts for Drazdys_203:

(9, 109721), (Start: 13 @109748 has 171 MA's), (18, 109781), (22, 109814), (30, 109904), (31, 109913), (35, 110009), (37, 110030), (65, 110438), (69, 110468), (72, 110492), (73, 110495), (81, 110555), (84, 110597), (91, 110657), (92, 110669), (98, 110708), (100, 110726), (101, 110732), (102, 110756), (108, 110792), (109, 110801), (112, 110816),

Gene: E3_gp150 Start: 99938, Stop: 101044, Start Num: 15

Candidate Starts for E3_gp150:

(15, 99938), (37, 100202), (50, 100355), (51, 100373), (57, 100487), (61, 100550), (70, 100682), (75, 100712), (76, 100718), (87, 100847), (88, 100853), (89, 100865), (100, 100949), (104, 100985), (108, 101015), (109, 101024),

Gene: ET08_193 Start: 109339, Stop: 110412, Start Num: 13

Candidate Starts for ET08_193:

(9, 109312), (Start: 13 @109339 has 171 MA's), (18, 109372), (22, 109405), (30, 109495), (31, 109504), (35, 109600), (37, 109621), (65, 110029), (69, 110059), (72, 110083), (73, 110086), (81, 110146), (84, 110188), (91, 110248), (92, 110260), (98, 110299), (100, 110317), (101, 110323), (102, 110347), (108, 110383), (109, 110392), (112, 110407),

Gene: EasyJones_208 Start: 109820, Stop: 110893, Start Num: 13

Candidate Starts for EasyJones_208:

(9, 109793), (Start: 13 @109820 has 171 MA's), (18, 109853), (22, 109886), (30, 109976), (31, 109985), (35, 110081), (37, 110102), (65, 110510), (69, 110540), (72, 110564), (73, 110567), (81, 110627), (84, 110669), (91, 110729), (92, 110741), (98, 110780), (100, 110798), (101, 110804), (102, 110828), (108, 110864), (109, 110873), (112, 110888),

Gene: EggyFarm_214 Start: 112675, Stop: 113748, Start Num: 13

Candidate Starts for EggyFarm_214:

(9, 112648), (Start: 13 @112675 has 171 MA's), (18, 112708), (22, 112741), (30, 112831), (31, 112840), (35, 112936), (37, 112957), (65, 113365), (69, 113395), (72, 113419), (73, 113422), (81, 113482), (84, 113524), (91, 113584), (92, 113596), (98, 113635), (100, 113653), (101, 113659), (102, 113683), (108, 113719), (109, 113728), (112, 113743),

Gene: EmToTheThree_205 Start: 110219, Stop: 111292, Start Num: 13

Candidate Starts for EmToTheThree_205:

(9, 110192), (Start: 13 @110219 has 171 MA's), (18, 110252), (22, 110285), (30, 110375), (31, 110384), (35, 110480), (37, 110501), (65, 110909), (69, 110939), (72, 110963), (73, 110966), (81,

111026), (84, 111068), (91, 111128), (92, 111140), (98, 111179), (100, 111197), (101, 111203), (102, 111227), (108, 111263), (109, 111272), (112, 111287),

Gene: EmmaElysia_208 Start: 110238, Stop: 111311, Start Num: 13

Candidate Starts for EmmaElysia_208:

(9, 110211), (Start: 13 @110238 has 171 MA's), (18, 110271), (22, 110304), (30, 110394), (31, 110403), (35, 110499), (37, 110520), (65, 110928), (69, 110958), (72, 110982), (73, 110985), (81, 111045), (84, 111087), (91, 111147), (92, 111159), (98, 111198), (100, 111216), (101, 111222), (102, 111246), (108, 111282), (109, 111291), (112, 111306),

Gene: Erdmann_206 Start: 110177, Stop: 111250, Start Num: 13

Candidate Starts for Erdmann_206:

(9, 110150), (Start: 13 @110177 has 171 MA's), (18, 110210), (22, 110243), (30, 110333), (31, 110342), (35, 110438), (37, 110459), (65, 110867), (69, 110897), (72, 110921), (73, 110924), (81, 110984), (84, 111026), (91, 111086), (92, 111098), (98, 111137), (100, 111155), (101, 111161), (102, 111185), (108, 111221), (109, 111230), (112, 111245),

Gene: ErnieJ_198 Start: 107999, Stop: 109072, Start Num: 13

Candidate Starts for ErnieJ_198:

(9, 107972), (Start: 13 @107999 has 171 MA's), (18, 108032), (22, 108065), (30, 108155), (31, 108164), (35, 108260), (37, 108281), (65, 108689), (69, 108719), (72, 108743), (73, 108746), (81, 108806), (84, 108848), (91, 108908), (92, 108920), (98, 108959), (100, 108977), (101, 108983), (102, 109007), (108, 109043), (109, 109052), (112, 109067),

Gene: Essence_202 Start: 108960, Stop: 110033, Start Num: 13

Candidate Starts for Essence_202:

(9, 108933), (Start: 13 @108960 has 171 MA's), (18, 108993), (22, 109026), (30, 109116), (31, 109125), (35, 109221), (37, 109242), (65, 109650), (69, 109680), (72, 109704), (73, 109707), (81, 109767), (84, 109809), (91, 109869), (92, 109881), (98, 109920), (100, 109938), (101, 109944), (102, 109968), (108, 110004), (109, 110013), (112, 110028),

Gene: Ewok_204 Start: 110096, Stop: 111169, Start Num: 13

Candidate Starts for Ewok_204:

(9, 110069), (Start: 13 @110096 has 171 MA's), (18, 110129), (22, 110162), (30, 110252), (31, 110261), (35, 110357), (37, 110378), (65, 110786), (69, 110816), (72, 110840), (73, 110843), (81, 110903), (84, 110945), (91, 111005), (92, 111017), (98, 111056), (100, 111074), (101, 111080), (102, 111104), (108, 111140), (109, 111149), (112, 111164),

Gene: Finch_73 Start: 62417, Stop: 63523, Start Num: 10

Candidate Starts for Finch_73:

(Start: 10 @62417 has 1 MA's), (27, 62549), (31, 62576), (32, 62621), (37, 62693), (39, 62729), (47, 62831), (50, 62852), (54, 62930), (55, 62960), (58, 62990), (64, 63086), (68, 63122), (74, 63155), (75, 63167), (77, 63176), (80, 63224), (82, 63248), (86, 63290), (87, 63296), (92, 63341), (93, 63344), (94, 63353), (98, 63380), (100, 63398), (101, 63404), (108, 63464), (111, 63482),

Gene: Flabslab_200 Start: 108141, Stop: 109214, Start Num: 13

Candidate Starts for Flabslab_200:

(9, 108114), (Start: 13 @108141 has 171 MA's), (18, 108174), (22, 108207), (30, 108297), (31, 108306), (35, 108402), (37, 108423), (65, 108831), (69, 108861), (72, 108885), (73, 108888), (81, 108948), (84, 108990), (91, 109050), (92, 109062), (98, 109101), (100, 109119), (101, 109125), (102, 109149), (108, 109185), (109, 109194), (112, 109209),

Gene: Fludd_205 Start: 109532, Stop: 110605, Start Num: 13

Candidate Starts for Fludd_205:

(9, 109505), (Start: 13 @109532 has 171 MA's), (18, 109565), (22, 109598), (30, 109688), (31, 109697), (35, 109793), (37, 109814), (65, 110222), (69, 110252), (72, 110276), (73, 110279), (81, 110339), (84, 110381), (91, 110441), (92, 110453), (98, 110492), (100, 110510), (101, 110516), (102, 110540), (108, 110576), (109, 110585), (112, 110600),

Gene: FoxtrotP1_203 Start: 110776, Stop: 111849, Start Num: 13

Candidate Starts for FoxtrotP1_203:

(9, 110749), (Start: 13 @110776 has 171 MA's), (18, 110809), (22, 110842), (30, 110932), (31, 110941), (35, 111037), (37, 111058), (65, 111466), (69, 111496), (72, 111520), (73, 111523), (81, 111583), (84, 111625), (91, 111685), (92, 111697), (98, 111736), (100, 111754), (101, 111760), (102, 111784), (108, 111820), (109, 111829), (112, 111844),

Gene: FrayBell_208 Start: 109621, Stop: 110694, Start Num: 13

Candidate Starts for FrayBell_208:

(9, 109594), (Start: 13 @109621 has 171 MA's), (18, 109654), (22, 109687), (30, 109777), (31, 109786), (35, 109882), (37, 109903), (65, 110311), (69, 110341), (72, 110365), (73, 110368), (81, 110428), (84, 110470), (91, 110530), (92, 110542), (98, 110581), (100, 110599), (101, 110605), (102, 110629), (108, 110665), (109, 110674), (112, 110689),

Gene: FudgeTart_200 Start: 109243, Stop: 110316, Start Num: 13

Candidate Starts for FudgeTart_200:

(9, 109216), (Start: 13 @109243 has 171 MA's), (18, 109276), (22, 109309), (30, 109399), (31, 109408), (35, 109504), (37, 109525), (65, 109933), (69, 109963), (72, 109987), (73, 109990), (81, 110050), (84, 110092), (91, 110152), (92, 110164), (98, 110203), (100, 110221), (101, 110227), (102, 110251), (108, 110287), (109, 110296), (112, 110311),

Gene: Gabriel_208 Start: 108698, Stop: 109771, Start Num: 13

Candidate Starts for Gabriel_208:

(9, 108671), (Start: 13 @108698 has 171 MA's), (18, 108731), (22, 108764), (30, 108854), (31, 108863), (35, 108959), (37, 108980), (65, 109388), (69, 109418), (72, 109442), (73, 109445), (81, 109505), (84, 109547), (91, 109607), (92, 109619), (98, 109658), (100, 109676), (101, 109682), (102, 109706), (108, 109742), (109, 109751), (112, 109766),

Gene: Gamgam_206 Start: 109055, Stop: 110128, Start Num: 13

Candidate Starts for Gamgam_206:

(9, 109028), (Start: 13 @109055 has 171 MA's), (18, 109088), (22, 109121), (30, 109211), (31, 109220), (35, 109316), (37, 109337), (65, 109745), (69, 109775), (72, 109799), (73, 109802), (81, 109862), (84, 109904), (91, 109964), (92, 109976), (98, 110015), (100, 110033), (101, 110039), (102, 110063), (108, 110099), (109, 110108), (112, 110123),

Gene: Ghost_205 Start: 108976, Stop: 110049, Start Num: 13

Candidate Starts for Ghost_205:

(9, 108949), (Start: 13 @108976 has 171 MA's), (18, 109009), (22, 109042), (30, 109132), (31, 109141), (35, 109237), (37, 109258), (65, 109666), (69, 109696), (72, 109720), (73, 109723), (81, 109783), (84, 109825), (91, 109885), (92, 109897), (98, 109936), (100, 109954), (101, 109960), (102, 109984), (108, 110020), (109, 110029), (112, 110044),

Gene: Gizmo_211 Start: 112094, Stop: 113167, Start Num: 13

Candidate Starts for Gizmo_211:

(9, 112067), (Start: 13 @112094 has 171 MA's), (18, 112127), (22, 112160), (30, 112250), (31, 112259), (35, 112355), (37, 112376), (65, 112784), (69, 112814), (72, 112838), (73, 112841), (81, 112901), (84, 112943), (91, 113003), (92, 113015), (98, 113054), (100, 113072), (101, 113078), (102,

113102), (108, 113138), (109, 113147), (112, 113162),

Gene: Grasshills_213 Start: 112674, Stop: 113747, Start Num: 13

Candidate Starts for Grasshills_213:

(9, 112647), (Start: 13 @112674 has 171 MA's), (18, 112707), (22, 112740), (30, 112830), (31, 112839), (35, 112935), (37, 112956), (65, 113364), (69, 113394), (72, 113418), (73, 113421), (81, 113481), (84, 113523), (91, 113583), (92, 113595), (98, 113634), (100, 113652), (101, 113658), (102, 113682), (108, 113718), (109, 113727), (112, 113742),

Gene: Greely_194 Start: 106927, Stop: 108072, Start Num: 12

Candidate Starts for Greely_194:

(8, 106888), (Start: 12 @106927 has 2 MA's), (17, 106951), (26, 107065), (31, 107098), (35, 107215), (36, 107230), (37, 107236), (38, 107266), (42, 107320), (43, 107332), (45, 107344), (48, 107377), (53, 107437), (58, 107539), (62, 107593), (63, 107602), (71, 107683), (79, 107734), (88, 107821), (97, 107896), (113, 108016),

Gene: Grungle_189 Start: 107013, Stop: 108086, Start Num: 13

Candidate Starts for Grungle_189:

(9, 106986), (Start: 13 @107013 has 171 MA's), (18, 107046), (22, 107079), (30, 107169), (31, 107178), (35, 107274), (37, 107295), (65, 107703), (69, 107733), (72, 107757), (73, 107760), (81, 107820), (84, 107862), (91, 107922), (92, 107934), (98, 107973), (100, 107991), (101, 107997), (102, 108021), (108, 108057), (109, 108066), (112, 108081),

Gene: Guwapp_200 Start: 107810, Stop: 108883, Start Num: 13

Candidate Starts for Guwapp_200:

(9, 107783), (Start: 13 @107810 has 171 MA's), (18, 107843), (22, 107876), (30, 107966), (31, 107975), (35, 108071), (37, 108092), (65, 108500), (69, 108530), (72, 108554), (73, 108557), (81, 108617), (84, 108659), (91, 108719), (92, 108731), (98, 108770), (100, 108788), (101, 108794), (102, 108818), (108, 108854), (109, 108863), (112, 108878),

Gene: HyRo_193 Start: 109319, Stop: 110392, Start Num: 13

Candidate Starts for HyRo_193:

(9, 109292), (Start: 13 @109319 has 171 MA's), (18, 109352), (22, 109385), (30, 109475), (31, 109484), (35, 109580), (37, 109601), (65, 110009), (69, 110039), (72, 110063), (73, 110066), (81, 110126), (84, 110168), (91, 110228), (92, 110240), (98, 110279), (100, 110297), (101, 110303), (102, 110327), (108, 110363), (109, 110372), (112, 110387),

Gene: I3_215 Start: 112055, Stop: 113128, Start Num: 13

Candidate Starts for I3_215:

(9, 112028), (Start: 13 @112055 has 171 MA's), (18, 112088), (22, 112121), (30, 112211), (31, 112220), (35, 112316), (37, 112337), (65, 112745), (69, 112775), (72, 112799), (73, 112802), (81, 112862), (84, 112904), (91, 112964), (92, 112976), (98, 113015), (100, 113033), (101, 113039), (102, 113063), (108, 113099), (109, 113108), (112, 113123),

Gene: IkeLoa_197 Start: 108717, Stop: 109790, Start Num: 13

Candidate Starts for IkeLoa_197:

(9, 108690), (Start: 13 @108717 has 171 MA's), (18, 108750), (22, 108783), (30, 108873), (31, 108882), (35, 108978), (37, 108999), (65, 109407), (69, 109437), (72, 109461), (73, 109464), (81, 109524), (84, 109566), (91, 109626), (92, 109638), (98, 109677), (100, 109695), (101, 109701), (102, 109725), (108, 109761), (109, 109770), (112, 109785),

Gene: InigoMontoya_208 Start: 109729, Stop: 110802, Start Num: 13

Candidate Starts for InigoMontoya_208:

(9, 109702), (Start: 13 @109729 has 171 MA's), (18, 109762), (22, 109795), (30, 109885), (31, 109894), (35, 109990), (37, 110011), (65, 110419), (69, 110449), (72, 110473), (73, 110476), (81, 110536), (84, 110578), (91, 110638), (92, 110650), (98, 110689), (100, 110707), (101, 110713), (102, 110737), (108, 110773), (109, 110782), (112, 110797),

Gene: InterFolia_208 Start: 111427, Stop: 112500, Start Num: 13

Candidate Starts for InterFolia_208:

(9, 111400), (Start: 13 @111427 has 171 MA's), (18, 111460), (22, 111493), (30, 111583), (31, 111592), (35, 111688), (37, 111709), (65, 112117), (69, 112147), (72, 112171), (73, 112174), (81, 112234), (84, 112276), (91, 112336), (92, 112348), (98, 112387), (100, 112405), (101, 112411), (102, 112435), (108, 112471), (109, 112480), (112, 112495),

Gene: Iota_200 Start: 109414, Stop: 110487, Start Num: 13

Candidate Starts for Iota_200:

(9, 109387), (Start: 13 @109414 has 171 MA's), (18, 109447), (22, 109480), (30, 109570), (31, 109579), (35, 109675), (37, 109696), (65, 110104), (69, 110134), (72, 110158), (73, 110161), (81, 110221), (84, 110263), (91, 110323), (92, 110335), (98, 110374), (100, 110392), (101, 110398), (102, 110422), (108, 110458), (109, 110467), (112, 110482),

Gene: Issimir_201 Start: 109367, Stop: 110440, Start Num: 13

Candidate Starts for Issimir_201:

(9, 109340), (Start: 13 @109367 has 171 MA's), (18, 109400), (22, 109433), (30, 109523), (31, 109532), (35, 109628), (37, 109649), (65, 110057), (69, 110087), (72, 110111), (73, 110114), (81, 110174), (84, 110216), (91, 110276), (92, 110288), (98, 110327), (100, 110345), (101, 110351), (102, 110375), (108, 110411), (109, 110420), (112, 110435),

Gene: Izajani_203 Start: 110236, Stop: 111309, Start Num: 13

Candidate Starts for Izajani_203:

(9, 110209), (Start: 13 @110236 has 171 MA's), (18, 110269), (22, 110302), (30, 110392), (31, 110401), (35, 110497), (37, 110518), (65, 110926), (69, 110956), (72, 110980), (73, 110983), (81, 111043), (84, 111085), (91, 111145), (92, 111157), (98, 111196), (100, 111214), (101, 111220), (102, 111244), (108, 111280), (109, 111289), (112, 111304),

Gene: JPickles_201 Start: 107714, Stop: 108787, Start Num: 13

Candidate Starts for JPickles_201:

(9, 107687), (Start: 13 @107714 has 171 MA's), (18, 107747), (22, 107780), (30, 107870), (31, 107879), (35, 107975), (37, 107996), (65, 108404), (69, 108434), (72, 108458), (73, 108461), (81, 108521), (84, 108563), (91, 108623), (92, 108635), (98, 108674), (100, 108692), (101, 108698), (102, 108722), (108, 108758), (109, 108767), (112, 108782),

Gene: Janiyra_208 Start: 109954, Stop: 111027, Start Num: 13

Candidate Starts for Janiyra_208:

(9, 109927), (Start: 13 @109954 has 171 MA's), (18, 109987), (22, 110020), (30, 110110), (31, 110119), (35, 110215), (37, 110236), (65, 110644), (69, 110674), (72, 110698), (73, 110701), (81, 110761), (84, 110803), (91, 110863), (92, 110875), (98, 110914), (100, 110932), (101, 110938), (102, 110962), (108, 110998), (109, 111007), (112, 111022),

Gene: JayJay_203 Start: 110651, Stop: 111724, Start Num: 13

Candidate Starts for JayJay_203:

(9, 110624), (Start: 13 @110651 has 171 MA's), (18, 110684), (22, 110717), (30, 110807), (31, 110816), (35, 110912), (37, 110933), (65, 111341), (69, 111371), (72, 111395), (73, 111398), (81, 111458), (84, 111500), (91, 111560), (92, 111572), (98, 111611), (100, 111629), (101, 111635), (102, 111659), (108, 111695), (109, 111704), (112, 111719),

Gene: Jaygup_201 Start: 108775, Stop: 109848, Start Num: 13

Candidate Starts for Jaygup_201:

(9, 108748), (Start: 13 @108775 has 171 MA's), (18, 108808), (22, 108841), (30, 108931), (31, 108940), (35, 109036), (37, 109057), (65, 109465), (69, 109495), (72, 109519), (73, 109522), (81, 109582), (84, 109624), (91, 109684), (92, 109696), (98, 109735), (100, 109753), (101, 109759), (102, 109783), (108, 109819), (109, 109828), (112, 109843),

Gene: JeanGrey_91 Start: 72203, Stop: 73294, Start Num: 13

Candidate Starts for JeanGrey_91:

(11, 72197), (Start: 13 @72203 has 171 MA's), (20, 72257), (29, 72359), (32, 72416), (34, 72434), (37, 72488), (42, 72572), (47, 72623), (60, 72806), (67, 72917), (75, 72965), (88, 73097), (101, 73199),

Gene: Jedediah_205 Start: 109828, Stop: 110901, Start Num: 13

Candidate Starts for Jedediah_205:

(9, 109801), (Start: 13 @109828 has 171 MA's), (18, 109861), (22, 109894), (30, 109984), (31, 109993), (35, 110089), (37, 110110), (65, 110518), (69, 110548), (72, 110572), (73, 110575), (81, 110635), (84, 110677), (91, 110737), (92, 110749), (98, 110788), (100, 110806), (101, 110812), (102, 110836), (108, 110872), (109, 110881), (112, 110896),

Gene: Jemmno_204 Start: 108657, Stop: 109730, Start Num: 13

Candidate Starts for Jemmno_204:

(9, 108630), (Start: 13 @108657 has 171 MA's), (18, 108690), (22, 108723), (30, 108813), (31, 108822), (35, 108918), (37, 108939), (65, 109347), (69, 109377), (72, 109401), (73, 109404), (81, 109464), (84, 109506), (91, 109566), (92, 109578), (98, 109617), (100, 109635), (101, 109641), (102, 109665), (108, 109701), (109, 109710), (112, 109725),

Gene: Jessibeth14_205 Start: 110845, Stop: 111918, Start Num: 13

Candidate Starts for Jessibeth14_205:

(9, 110818), (Start: 13 @110845 has 171 MA's), (18, 110878), (22, 110911), (30, 111001), (31, 111010), (35, 111106), (37, 111127), (65, 111535), (69, 111565), (72, 111589), (73, 111592), (81, 111652), (84, 111694), (91, 111754), (92, 111766), (98, 111805), (100, 111823), (101, 111829), (102, 111853), (108, 111889), (109, 111898), (112, 111913),

Gene: JulietS_198 Start: 106946, Stop: 108019, Start Num: 13

Candidate Starts for JulietS_198:

(9, 106919), (Start: 13 @106946 has 171 MA's), (18, 106979), (22, 107012), (30, 107102), (31, 107111), (35, 107207), (37, 107228), (65, 107636), (69, 107666), (72, 107690), (73, 107693), (81, 107753), (84, 107795), (91, 107855), (92, 107867), (98, 107906), (100, 107924), (101, 107930), (102, 107954), (108, 107990), (109, 107999), (112, 108014),

Gene: JustHall_199 Start: 108861, Stop: 109934, Start Num: 13

Candidate Starts for JustHall_199:

(9, 108834), (Start: 13 @108861 has 171 MA's), (18, 108894), (22, 108927), (30, 109017), (31, 109026), (35, 109122), (37, 109143), (65, 109551), (69, 109581), (72, 109605), (73, 109608), (81, 109668), (84, 109710), (91, 109770), (92, 109782), (98, 109821), (100, 109839), (101, 109845), (102, 109869), (108, 109905), (109, 109914), (112, 109929),

Gene: Kamryn_204 Start: 110491, Stop: 111564, Start Num: 13

Candidate Starts for Kamryn_204:

(9, 110464), (Start: 13 @110491 has 171 MA's), (18, 110524), (22, 110557), (30, 110647), (31, 110656), (35, 110752), (37, 110773), (65, 111181), (69, 111211), (72, 111235), (73, 111238), (81, 111298), (84, 111340), (91, 111400), (92, 111412), (98, 111451), (100, 111469), (101, 111475), (102,

111499), (108, 111535), (109, 111544), (112, 111559),

Gene: Kboogie_209 Start: 109519, Stop: 110592, Start Num: 13

Candidate Starts for Kboogie_209:

(9, 109492), (Start: 13 @109519 has 171 MA's), (18, 109552), (22, 109585), (30, 109675), (31, 109684), (35, 109780), (37, 109801), (65, 110209), (69, 110239), (72, 110263), (73, 110266), (81, 110326), (84, 110368), (91, 110428), (92, 110440), (98, 110479), (100, 110497), (101, 110503), (102, 110527), (108, 110563), (109, 110572), (112, 110587),

Gene: Khaleesi_204 Start: 110312, Stop: 111385, Start Num: 13

Candidate Starts for Khaleesi_204:

(9, 110285), (Start: 13 @110312 has 171 MA's), (18, 110345), (22, 110378), (30, 110468), (31, 110477), (35, 110573), (37, 110594), (65, 111002), (69, 111032), (72, 111056), (73, 111059), (81, 111119), (84, 111161), (91, 111221), (92, 111233), (98, 111272), (100, 111290), (101, 111296), (102, 111320), (108, 111356), (109, 111365), (112, 111380),

Gene: Koguma_204 Start: 109172, Stop: 110245, Start Num: 13

Candidate Starts for Koguma_204:

(9, 109145), (Start: 13 @109172 has 171 MA's), (18, 109205), (22, 109238), (30, 109328), (31, 109337), (35, 109433), (37, 109454), (65, 109862), (69, 109892), (72, 109916), (73, 109919), (81, 109979), (84, 110021), (91, 110081), (92, 110093), (98, 110132), (100, 110150), (101, 110156), (102, 110180), (108, 110216), (109, 110225), (112, 110240),

Gene: LRRHood_198 Start: 109517, Stop: 110590, Start Num: 13

Candidate Starts for LRRHood_198:

(9, 109490), (Start: 13 @109517 has 171 MA's), (18, 109550), (22, 109583), (30, 109673), (31, 109682), (35, 109778), (37, 109799), (65, 110207), (69, 110237), (72, 110261), (73, 110264), (81, 110324), (84, 110366), (91, 110426), (92, 110438), (98, 110477), (100, 110495), (101, 110501), (102, 110525), (108, 110561), (109, 110570), (112, 110585),

Gene: Latch_205 Start: 109065, Stop: 110138, Start Num: 13

Candidate Starts for Latch_205:

(9, 109038), (Start: 13 @109065 has 171 MA's), (18, 109098), (22, 109131), (30, 109221), (31, 109230), (35, 109326), (37, 109347), (65, 109755), (69, 109785), (72, 109809), (73, 109812), (81, 109872), (84, 109914), (91, 109974), (92, 109986), (98, 110025), (100, 110043), (101, 110049), (102, 110073), (108, 110109), (109, 110118), (112, 110133),

Gene: Lee7_205 Start: 111692, Stop: 112765, Start Num: 13

Candidate Starts for Lee7_205:

(9, 111665), (Start: 13 @111692 has 171 MA's), (18, 111725), (22, 111758), (30, 111848), (31, 111857), (35, 111953), (37, 111974), (65, 112382), (69, 112412), (72, 112436), (73, 112439), (81, 112499), (84, 112541), (91, 112601), (92, 112613), (98, 112652), (100, 112670), (101, 112676), (102, 112700), (108, 112736), (109, 112745), (112, 112760),

Gene: LifeSavor_204 Start: 109590, Stop: 110663, Start Num: 13

Candidate Starts for LifeSavor_204:

(9, 109563), (Start: 13 @109590 has 171 MA's), (18, 109623), (22, 109656), (30, 109746), (31, 109755), (35, 109851), (37, 109872), (65, 110280), (69, 110310), (72, 110334), (73, 110337), (81, 110397), (84, 110439), (91, 110499), (92, 110511), (98, 110550), (100, 110568), (101, 110574), (102, 110598), (108, 110634), (109, 110643), (112, 110658),

Gene: LinStu_204 Start: 109804, Stop: 110877, Start Num: 13

Candidate Starts for LinStu_204:

(9, 109777), (Start: 13 @109804 has 171 MA's), (18, 109837), (22, 109870), (30, 109960), (31, 109969), (35, 110065), (37, 110086), (65, 110494), (69, 110524), (72, 110548), (73, 110551), (81, 110611), (84, 110653), (91, 110713), (92, 110725), (98, 110764), (100, 110782), (101, 110788), (102, 110812), (108, 110848), (109, 110857), (112, 110872),

Gene: Littleton_208 Start: 110302, Stop: 111375, Start Num: 13

Candidate Starts for Littleton_208:

(9, 110275), (Start: 13 @110302 has 171 MA's), (18, 110335), (22, 110368), (30, 110458), (31, 110467), (35, 110563), (37, 110584), (65, 110992), (69, 111022), (72, 111046), (73, 111049), (81, 111109), (84, 111151), (91, 111211), (92, 111223), (98, 111262), (100, 111280), (101, 111286), (102, 111310), (108, 111346), (109, 111355), (112, 111370),

Gene: Loanshark_202 Start: 109627, Stop: 110700, Start Num: 13

Candidate Starts for Loanshark_202:

(9, 109600), (Start: 13 @109627 has 171 MA's), (18, 109660), (22, 109693), (30, 109783), (31, 109792), (35, 109888), (37, 109909), (65, 110317), (69, 110347), (72, 110371), (73, 110374), (81, 110434), (84, 110476), (91, 110536), (92, 110548), (98, 110587), (100, 110605), (101, 110611), (102, 110635), (108, 110671), (109, 110680), (112, 110695),

Gene: LolaVinca_203 Start: 110857, Stop: 111930, Start Num: 13

Candidate Starts for LolaVinca_203:

(9, 110830), (Start: 13 @110857 has 171 MA's), (18, 110890), (22, 110923), (30, 111013), (31, 111022), (35, 111118), (37, 111139), (65, 111547), (69, 111577), (72, 111601), (73, 111604), (81, 111664), (84, 111706), (91, 111766), (92, 111778), (98, 111817), (100, 111835), (101, 111841), (102, 111865), (108, 111901), (109, 111910), (112, 111925),

Gene: LordLeafolot_207 Start: 110469, Stop: 111542, Start Num: 13

Candidate Starts for LordLeafolot_207:

(9, 110442), (Start: 13 @110469 has 171 MA's), (18, 110502), (22, 110535), (30, 110625), (31, 110634), (35, 110730), (37, 110751), (65, 111159), (69, 111189), (72, 111213), (73, 111216), (81, 111276), (84, 111318), (91, 111378), (92, 111390), (98, 111429), (100, 111447), (101, 111453), (102, 111477), (108, 111513), (109, 111522), (112, 111537),

Gene: Lukilu_196 Start: 110527, Stop: 111600, Start Num: 13

Candidate Starts for Lukilu_196:

(9, 110500), (Start: 13 @110527 has 171 MA's), (18, 110560), (22, 110593), (30, 110683), (31, 110692), (35, 110788), (37, 110809), (65, 111217), (69, 111247), (72, 111271), (73, 111274), (81, 111334), (84, 111376), (91, 111436), (92, 111448), (98, 111487), (100, 111505), (101, 111511), (102, 111535), (108, 111571), (109, 111580), (112, 111595),

Gene: Maby2021_205 Start: 110756, Stop: 111829, Start Num: 13

Candidate Starts for Maby2021_205:

(9, 110729), (Start: 13 @110756 has 171 MA's), (18, 110789), (22, 110822), (30, 110912), (31, 110921), (35, 111017), (37, 111038), (65, 111446), (69, 111476), (72, 111500), (73, 111503), (81, 111563), (84, 111605), (91, 111665), (92, 111677), (98, 111716), (100, 111734), (101, 111740), (102, 111764), (108, 111800), (109, 111809), (112, 111824),

Gene: Mangeria_206 Start: 110858, Stop: 111931, Start Num: 13

Candidate Starts for Mangeria_206:

(9, 110831), (Start: 13 @110858 has 171 MA's), (18, 110891), (22, 110924), (30, 111014), (31, 111023), (35, 111119), (37, 111140), (65, 111548), (69, 111578), (72, 111602), (73, 111605), (81, 111665), (84, 111707), (91, 111767), (92, 111779), (98, 111818), (100, 111836), (101, 111842), (102, 111866), (108, 111902), (109, 111911), (112, 111926),

Gene: Matsumoto_204 Start: 109507, Stop: 110580, Start Num: 13

Candidate Starts for Matsumoto_204:

(9, 109480), (Start: 13 @109507 has 171 MA's), (18, 109540), (22, 109573), (30, 109663), (31, 109672), (35, 109768), (37, 109789), (65, 110197), (69, 110227), (72, 110251), (73, 110254), (81, 110314), (84, 110356), (91, 110416), (92, 110428), (98, 110467), (100, 110485), (101, 110491), (102, 110515), (108, 110551), (109, 110560), (112, 110575),

Gene: McGee_204 Start: 108701, Stop: 109774, Start Num: 13

Candidate Starts for McGee_204:

(9, 108674), (Start: 13 @108701 has 171 MA's), (18, 108734), (22, 108767), (30, 108857), (31, 108866), (35, 108962), (37, 108983), (65, 109391), (69, 109421), (72, 109445), (73, 109448), (81, 109508), (84, 109550), (91, 109610), (92, 109622), (98, 109661), (100, 109679), (101, 109685), (102, 109709), (108, 109745), (109, 109754), (112, 109769),

Gene: McWolfish_202 Start: 109523, Stop: 110596, Start Num: 13

Candidate Starts for McWolfish_202:

(9, 109496), (Start: 13 @109523 has 171 MA's), (18, 109556), (22, 109589), (30, 109679), (31, 109688), (35, 109784), (37, 109805), (65, 110213), (69, 110243), (72, 110267), (73, 110270), (81, 110330), (84, 110372), (91, 110432), (92, 110444), (98, 110483), (100, 110501), (101, 110507), (102, 110531), (108, 110567), (109, 110576), (112, 110591),

Gene: Megamind_202 Start: 109814, Stop: 110887, Start Num: 13

Candidate Starts for Megamind_202:

(9, 109787), (Start: 13 @109814 has 171 MA's), (18, 109847), (22, 109880), (30, 109970), (31, 109979), (35, 110075), (37, 110096), (65, 110504), (69, 110534), (72, 110558), (73, 110561), (81, 110621), (84, 110663), (91, 110723), (92, 110735), (98, 110774), (100, 110792), (101, 110798), (102, 110822), (108, 110858), (109, 110867), (112, 110882),

Gene: Melpomini_200 Start: 108599, Stop: 109672, Start Num: 13

Candidate Starts for Melpomini_200:

(9, 108572), (Start: 13 @108599 has 171 MA's), (18, 108632), (22, 108665), (30, 108755), (31, 108764), (35, 108860), (37, 108881), (65, 109289), (69, 109319), (72, 109343), (73, 109346), (81, 109406), (84, 109448), (91, 109508), (92, 109520), (98, 109559), (100, 109577), (101, 109583), (102, 109607), (108, 109643), (109, 109652), (112, 109667),

Gene: MikeLiesIn_207 Start: 110950, Stop: 112023, Start Num: 13

Candidate Starts for MikeLiesIn_207:

(9, 110923), (Start: 13 @110950 has 171 MA's), (18, 110983), (22, 111016), (30, 111106), (31, 111115), (35, 111211), (37, 111232), (65, 111640), (69, 111670), (72, 111694), (73, 111697), (81, 111757), (84, 111799), (91, 111859), (92, 111871), (98, 111910), (100, 111928), (101, 111934), (102, 111958), (108, 111994), (109, 112003), (112, 112018),

Gene: Mikro_201 Start: 111499, Stop: 112572, Start Num: 13

Candidate Starts for Mikro_201:

(9, 111472), (Start: 13 @111499 has 171 MA's), (18, 111532), (22, 111565), (30, 111655), (31, 111664), (35, 111760), (37, 111781), (65, 112189), (69, 112219), (72, 112243), (73, 112246), (81, 112306), (84, 112348), (91, 112408), (92, 112420), (98, 112459), (100, 112477), (101, 112483), (102, 112507), (108, 112543), (109, 112552), (112, 112567),

Gene: MoMoMixon_203 Start: 109989, Stop: 111062, Start Num: 13

Candidate Starts for MoMoMixon_203:

(9, 109962), (Start: 13 @109989 has 171 MA's), (18, 110022), (22, 110055), (30, 110145), (31, 110154), (35, 110250), (37, 110271), (65, 110679), (69, 110709), (72, 110733), (73, 110736), (81, 110796), (84, 110838), (91, 110898), (92, 110910), (98, 110949), (100, 110967), (101, 110973), (102, 110997), (108, 111033), (109, 111042), (112, 111057),

Gene: Momo_206 Start: 109065, Stop: 110138, Start Num: 13

Candidate Starts for Momo_206:

(9, 109038), (Start: 13 @109065 has 171 MA's), (18, 109098), (22, 109131), (30, 109221), (31, 109230), (35, 109326), (37, 109347), (65, 109755), (69, 109785), (72, 109809), (73, 109812), (81, 109872), (84, 109914), (91, 109974), (92, 109986), (98, 110025), (100, 110043), (101, 110049), (102, 110073), (108, 110109), (109, 110118), (112, 110133),

Gene: Morizzled23_202 Start: 108432, Stop: 109505, Start Num: 13

Candidate Starts for Morizzled23_202:

(9, 108405), (Start: 13 @108432 has 171 MA's), (18, 108465), (22, 108498), (30, 108588), (31, 108597), (35, 108693), (37, 108714), (65, 109122), (69, 109152), (72, 109176), (73, 109179), (81, 109239), (84, 109281), (91, 109341), (92, 109353), (98, 109392), (100, 109410), (101, 109416), (102, 109440), (108, 109476), (109, 109485), (112, 109500),

Gene: Myrna_188 Start: 106597, Stop: 107742, Start Num: 12

Candidate Starts for Myrna_188:

(Start: 12 @106597 has 2 MA's), (17, 106621), (26, 106735), (30, 106759), (31, 106768), (35, 106885), (36, 106900), (37, 106906), (38, 106936), (42, 106990), (45, 107014), (48, 107047), (53, 107107), (58, 107209), (62, 107263), (63, 107272), (71, 107353), (88, 107491), (97, 107566), (114, 107710),

Gene: Naija_206 Start: 109768, Stop: 110841, Start Num: 13

Candidate Starts for Naija_206:

(9, 109741), (Start: 13 @109768 has 171 MA's), (18, 109801), (22, 109834), (30, 109924), (31, 109933), (35, 110029), (37, 110050), (65, 110458), (69, 110488), (72, 110512), (73, 110515), (81, 110575), (84, 110617), (91, 110677), (92, 110689), (98, 110728), (100, 110746), (101, 110752), (102, 110776), (108, 110812), (109, 110821), (112, 110836),

Gene: Napoleon13_202 Start: 108796, Stop: 109869, Start Num: 13

Candidate Starts for Napoleon13_202:

(9, 108769), (Start: 13 @108796 has 171 MA's), (18, 108829), (22, 108862), (30, 108952), (31, 108961), (35, 109057), (37, 109078), (65, 109486), (69, 109516), (72, 109540), (73, 109543), (81, 109603), (84, 109645), (91, 109705), (92, 109717), (98, 109756), (100, 109774), (101, 109780), (102, 109804), (108, 109840), (109, 109849), (112, 109864),

Gene: Nappy_206 Start: 111462, Stop: 112535, Start Num: 13

Candidate Starts for Nappy_206:

(9, 111435), (Start: 13 @111462 has 171 MA's), (18, 111495), (22, 111528), (30, 111618), (31, 111627), (35, 111723), (37, 111744), (65, 112152), (69, 112182), (72, 112206), (73, 112209), (81, 112269), (84, 112311), (91, 112371), (92, 112383), (98, 112422), (100, 112440), (101, 112446), (102, 112470), (108, 112506), (109, 112515), (112, 112530),

Gene: Naval22_210 Start: 111545, Stop: 112618, Start Num: 13

Candidate Starts for Naval22_210:

(9, 111518), (Start: 13 @111545 has 171 MA's), (18, 111578), (22, 111611), (30, 111701), (31, 111710), (35, 111806), (37, 111827), (65, 112235), (69, 112265), (72, 112289), (73, 112292), (81, 112352), (84, 112394), (91, 112454), (92, 112466), (98, 112505), (100, 112523), (101, 112529), (102, 112553), (108, 112589), (109, 112598), (112, 112613),

Gene: NedWong_204 Start: 110201, Stop: 111274, Start Num: 13

Candidate Starts for NedWong_204:

(9, 110174), (Start: 13 @110201 has 171 MA's), (18, 110234), (22, 110267), (30, 110357), (31, 110366), (35, 110462), (37, 110483), (65, 110891), (69, 110921), (72, 110945), (73, 110948), (81, 111008), (84, 111050), (91, 111110), (92, 111122), (98, 111161), (100, 111179), (101, 111185), (102, 111209), (108, 111245), (109, 111254), (112, 111269),

Gene: Ngannou_202 Start: 108047, Stop: 109120, Start Num: 13

Candidate Starts for Ngannou_202:

(9, 108020), (Start: 13 @108047 has 171 MA's), (18, 108080), (22, 108113), (30, 108203), (31, 108212), (35, 108308), (37, 108329), (65, 108737), (69, 108767), (72, 108791), (73, 108794), (81, 108854), (84, 108896), (91, 108956), (92, 108968), (98, 109007), (100, 109025), (101, 109031), (102, 109055), (108, 109091), (109, 109100), (112, 109115),

Gene: Nidhogg_206 Start: 110594, Stop: 111667, Start Num: 13

Candidate Starts for Nidhogg_206:

(9, 110567), (Start: 13 @110594 has 171 MA's), (18, 110627), (22, 110660), (30, 110750), (31, 110759), (35, 110855), (37, 110876), (65, 111284), (69, 111314), (72, 111338), (73, 111341), (81, 111401), (84, 111443), (91, 111503), (92, 111515), (98, 111554), (100, 111572), (101, 111578), (102, 111602), (108, 111638), (109, 111647), (112, 111662),

Gene: NoodleTree_211 Start: 110501, Stop: 111574, Start Num: 13

Candidate Starts for NoodleTree_211:

(9, 110474), (Start: 13 @110501 has 171 MA's), (18, 110534), (22, 110567), (30, 110657), (31, 110666), (35, 110762), (37, 110783), (65, 111191), (69, 111221), (72, 111245), (73, 111248), (81, 111308), (84, 111350), (91, 111410), (92, 111422), (98, 111461), (100, 111479), (101, 111485), (102, 111509), (108, 111545), (109, 111554), (112, 111569),

Gene: Norm_205 Start: 110503, Stop: 111576, Start Num: 13

Candidate Starts for Norm_205:

(9, 110476), (Start: 13 @110503 has 171 MA's), (18, 110536), (22, 110569), (30, 110659), (31, 110668), (35, 110764), (37, 110785), (65, 111193), (69, 111223), (72, 111247), (73, 111250), (81, 111310), (84, 111352), (91, 111412), (92, 111424), (98, 111463), (100, 111481), (101, 111487), (102, 111511), (108, 111547), (109, 111556), (112, 111571),

Gene: NuevoMundo_208 Start: 112055, Stop: 113128, Start Num: 13

Candidate Starts for NuevoMundo_208:

(9, 112028), (Start: 13 @112055 has 171 MA's), (18, 112088), (22, 112121), (30, 112211), (31, 112220), (35, 112316), (37, 112337), (65, 112745), (69, 112775), (72, 112799), (73, 112802), (81, 112862), (84, 112904), (91, 112964), (92, 112976), (98, 113015), (100, 113033), (101, 113039), (102, 113063), (108, 113099), (109, 113108), (112, 113123),

Gene: ParkTD_204 Start: 110065, Stop: 111138, Start Num: 13

Candidate Starts for ParkTD_204:

(9, 110038), (Start: 13 @110065 has 171 MA's), (18, 110098), (22, 110131), (30, 110221), (31, 110230), (35, 110326), (37, 110347), (65, 110755), (69, 110785), (72, 110809), (73, 110812), (81, 110872), (84, 110914), (91, 110974), (92, 110986), (98, 111025), (100, 111043), (101, 111049), (102, 111073), (108, 111109), (109, 111118), (112, 111133),

Gene: Patter_206 Start: 109079, Stop: 110152, Start Num: 13

Candidate Starts for Patter_206:

(9, 109052), (Start: 13 @109079 has 171 MA's), (18, 109112), (22, 109145), (30, 109235), (31, 109244), (35, 109340), (37, 109361), (65, 109769), (69, 109799), (72, 109823), (73, 109826), (81, 109886), (84, 109928), (91, 109988), (92, 110000), (98, 110039), (100, 110057), (101, 110063), (102, 110087), (108, 110123), (109, 110132), (112, 110147),

Gene: Phabba_199 Start: 106502, Stop: 107647, Start Num: 12

Candidate Starts for Phabba_199:

(8, 106463), (Start: 12 @106502 has 2 MA's), (17, 106526), (26, 106640), (31, 106673), (35, 106790), (36, 106805), (37, 106811), (38, 106841), (42, 106895), (43, 106907), (45, 106919), (48, 106952), (53, 107012), (58, 107114), (62, 107168), (63, 107177), (71, 107258), (88, 107396), (97, 107471), (113, 107591),

Gene: Phlegm_209 Start: 109768, Stop: 110841, Start Num: 13

Candidate Starts for Phlegm_209:

(9, 109741), (Start: 13 @109768 has 171 MA's), (18, 109801), (22, 109834), (30, 109924), (31, 109933), (35, 110029), (37, 110050), (65, 110458), (69, 110488), (72, 110512), (73, 110515), (81, 110575), (84, 110617), (91, 110677), (92, 110689), (98, 110728), (100, 110746), (101, 110752), (102, 110776), (108, 110812), (109, 110821), (112, 110836),

Gene: Phox_206 Start: 110723, Stop: 111796, Start Num: 13

Candidate Starts for Phox_206:

(9, 110696), (Start: 13 @110723 has 171 MA's), (18, 110756), (22, 110789), (30, 110879), (31, 110888), (35, 110984), (37, 111005), (65, 111413), (69, 111443), (72, 111467), (73, 111470), (81, 111530), (84, 111572), (91, 111632), (92, 111644), (98, 111683), (100, 111701), (101, 111707), (102, 111731), (108, 111767), (109, 111776), (112, 111791),

Gene: Phrappuccino_115 Start: 83314, Stop: 84369, Start Num: 14

Candidate Starts for Phrappuccino_115:

(7, 83179), (Start: 14 @83314 has 2 MA's), (21, 83374), (28, 83455), (52, 83776), (55, 83863), (64, 83980), (74, 84043), (75, 84055), (76, 84061), (78, 84073), (81, 84097), (85, 84142), (87, 84166), (95, 84235), (97, 84247), (98, 84250), (99, 84253), (103, 84301), (105, 84310),

Gene: Phusco_203 Start: 108600, Stop: 109673, Start Num: 13

Candidate Starts for Phusco_203:

(9, 108573), (Start: 13 @108600 has 171 MA's), (18, 108633), (22, 108666), (30, 108756), (31, 108765), (35, 108861), (37, 108882), (65, 109290), (69, 109320), (72, 109344), (73, 109347), (81, 109407), (84, 109449), (91, 109509), (92, 109521), (98, 109560), (100, 109578), (101, 109584), (102, 109608), (108, 109644), (109, 109653), (112, 109668),

Gene: Pier_206 Start: 111597, Stop: 112670, Start Num: 13

Candidate Starts for Pier_206:

(9, 111570), (Start: 13 @111597 has 171 MA's), (18, 111630), (22, 111663), (30, 111753), (31, 111762), (35, 111858), (37, 111879), (65, 112287), (69, 112317), (72, 112341), (73, 112344), (81, 112404), (84, 112446), (91, 112506), (92, 112518), (98, 112557), (100, 112575), (101, 112581), (102, 112605), (108, 112641), (109, 112650), (112, 112665),

Gene: Pinkcreek_189 Start: 108976, Stop: 110049, Start Num: 13

Candidate Starts for Pinkcreek_189:

(9, 108949), (Start: 13 @108976 has 171 MA's), (18, 109009), (22, 109042), (30, 109132), (31, 109141), (35, 109237), (37, 109258), (65, 109666), (69, 109696), (72, 109720), (73, 109723), (81, 109783), (84, 109825), (91, 109885), (92, 109897), (98, 109936), (100, 109954), (101, 109960), (102, 109984), (108, 110020), (109, 110029), (112, 110044),

Gene: Pio_213 Start: 112792, Stop: 113865, Start Num: 13

Candidate Starts for Pio_213:

(9, 112765), (Start: 13 @112792 has 171 MA's), (18, 112825), (22, 112858), (30, 112948), (31, 112957), (35, 113053), (37, 113074), (65, 113482), (69, 113512), (72, 113536), (73, 113539), (81, 113599), (84, 113641), (91, 113701), (92, 113713), (98, 113752), (100, 113770), (101, 113776), (102, 113800), (108, 113836), (109, 113845), (112, 113860),

Gene: Pivoine_206 Start: 109768, Stop: 110841, Start Num: 13

Candidate Starts for Pivoine_206:

(9, 109741), (Start: 13 @109768 has 171 MA's), (18, 109801), (22, 109834), (30, 109924), (31, 109933), (35, 110029), (37, 110050), (65, 110458), (69, 110488), (72, 110512), (73, 110515), (81, 110575), (84, 110617), (91, 110677), (92, 110689), (98, 110728), (100, 110746), (101, 110752), (102, 110776), (108, 110812), (109, 110821), (112, 110836),

Gene: Pleione_209 Start: 110543, Stop: 111616, Start Num: 13

Candidate Starts for Pleione_209:

(9, 110516), (Start: 13 @110543 has 171 MA's), (18, 110576), (22, 110609), (30, 110699), (31, 110708), (35, 110804), (37, 110825), (65, 111233), (69, 111263), (72, 111287), (73, 111290), (81, 111350), (84, 111392), (91, 111452), (92, 111464), (98, 111503), (100, 111521), (101, 111527), (102, 111551), (108, 111587), (109, 111596), (112, 111611),

Gene: Pupper_148 Start: 103120, Stop: 104235, Start Num: 13

Candidate Starts for Pupper_148:

(Start: 13 @103120 has 171 MA's), (18, 103162), (23, 103204), (25, 103240), (31, 103297), (33, 103354), (36, 103408), (37, 103414), (46, 103528), (49, 103585), (50, 103600), (52, 103621), (59, 103756), (75, 103903), (76, 103909), (80, 103945), (88, 104023), (97, 104095), (107, 104173), (110, 104197),

Gene: PurduePete_205 Start: 110771, Stop: 111844, Start Num: 13

Candidate Starts for PurduePete_205:

(9, 110744), (Start: 13 @110771 has 171 MA's), (18, 110804), (22, 110837), (30, 110927), (31, 110936), (35, 111032), (37, 111053), (65, 111461), (69, 111491), (72, 111515), (73, 111518), (81, 111578), (84, 111620), (91, 111680), (92, 111692), (98, 111731), (100, 111749), (101, 111755), (102, 111779), (108, 111815), (109, 111824), (112, 111839),

Gene: QBert_197 Start: 109124, Stop: 110197, Start Num: 13

Candidate Starts for QBert_197:

(9, 109097), (Start: 13 @109124 has 171 MA's), (18, 109157), (22, 109190), (30, 109280), (31, 109289), (35, 109385), (37, 109406), (65, 109814), (69, 109844), (72, 109868), (73, 109871), (81, 109931), (84, 109973), (91, 110033), (92, 110045), (98, 110084), (100, 110102), (101, 110108), (102, 110132), (108, 110168), (109, 110177), (112, 110192),

Gene: Quasimodo_207 Start: 110394, Stop: 111467, Start Num: 13

Candidate Starts for Quasimodo_207:

(9, 110367), (Start: 13 @110394 has 171 MA's), (18, 110427), (22, 110460), (30, 110550), (31, 110559), (35, 110655), (37, 110676), (65, 111084), (69, 111114), (72, 111138), (73, 111141), (81, 111201), (84, 111243), (91, 111303), (92, 111315), (98, 111354), (100, 111372), (101, 111378), (102, 111402), (108, 111438), (109, 111447), (112, 111462),

Gene: Rabinovish_198 Start: 110669, Stop: 111742, Start Num: 13

Candidate Starts for Rabinovish_198:

(9, 110642), (Start: 13 @110669 has 171 MA's), (18, 110702), (22, 110735), (30, 110825), (31, 110834), (35, 110930), (37, 110951), (65, 111359), (69, 111389), (72, 111413), (73, 111416), (81,

111476), (84, 111518), (91, 111578), (92, 111590), (98, 111629), (100, 111647), (101, 111653), (102, 111677), (108, 111713), (109, 111722), (112, 111737),

Gene: Rahel_206 Start: 109503, Stop: 110576, Start Num: 13

Candidate Starts for Rahel_206:

(9, 109476), (Start: 13 @109503 has 171 MA's), (18, 109536), (22, 109569), (30, 109659), (31, 109668), (35, 109764), (37, 109785), (65, 110193), (69, 110223), (72, 110247), (73, 110250), (81, 110310), (84, 110352), (91, 110412), (92, 110424), (98, 110463), (100, 110481), (101, 110487), (102, 110511), (108, 110547), (109, 110556), (112, 110571),

Gene: RedWattleHog_75 Start: 68343, Stop: 69437, Start Num: 16

Candidate Starts for RedWattleHog_75:

(Start: 16 @68343 has 2 MA's), (19, 68388), (23, 68427), (31, 68502), (37, 68619), (50, 68772), (56, 68895), (73, 69090), (75, 69105), (86, 69210), (87, 69216), (96, 69288), (98, 69300), (101, 69324), (103, 69348), (104, 69351), (106, 69360), (111, 69405),

Gene: Rizal_197 Start: 108021, Stop: 109094, Start Num: 13

Candidate Starts for Rizal_197:

(9, 107994), (Start: 13 @108021 has 171 MA's), (18, 108054), (22, 108087), (30, 108177), (31, 108186), (35, 108282), (37, 108303), (65, 108711), (69, 108741), (72, 108765), (73, 108768), (81, 108828), (84, 108870), (91, 108930), (92, 108942), (98, 108981), (100, 108999), (101, 109005), (102, 109029), (108, 109065), (109, 109074), (112, 109089),

Gene: RoMag_200 Start: 109814, Stop: 110887, Start Num: 13

Candidate Starts for RoMag_200:

(9, 109787), (Start: 13 @109814 has 171 MA's), (18, 109847), (22, 109880), (30, 109970), (31, 109979), (35, 110075), (37, 110096), (65, 110504), (69, 110534), (72, 110558), (73, 110561), (81, 110621), (84, 110663), (91, 110723), (92, 110735), (98, 110774), (100, 110792), (101, 110798), (102, 110822), (108, 110858), (109, 110867), (112, 110882),

Gene: Ronan_201 Start: 108206, Stop: 109279, Start Num: 13

Candidate Starts for Ronan_201:

(9, 108179), (Start: 13 @108206 has 171 MA's), (18, 108239), (22, 108272), (30, 108362), (31, 108371), (35, 108467), (37, 108488), (65, 108896), (69, 108926), (72, 108950), (73, 108953), (81, 109013), (84, 109055), (91, 109115), (92, 109127), (98, 109166), (100, 109184), (101, 109190), (102, 109214), (108, 109250), (109, 109259), (112, 109274),

Gene: Roots515_207 Start: 111322, Stop: 112395, Start Num: 13

Candidate Starts for Roots515_207:

(9, 111295), (Start: 13 @111322 has 171 MA's), (18, 111355), (22, 111388), (30, 111478), (31, 111487), (35, 111583), (37, 111604), (65, 112012), (69, 112042), (72, 112066), (73, 112069), (81, 112129), (84, 112171), (91, 112231), (92, 112243), (98, 112282), (100, 112300), (101, 112306), (102, 112330), (108, 112366), (109, 112375), (112, 112390),

Gene: SCentae_147 Start: 103271, Stop: 104386, Start Num: 13

Candidate Starts for SCentae_147:

(5, 103007), (6, 103127), (Start: 13 @103271 has 171 MA's), (18, 103313), (25, 103391), (31, 103448), (33, 103505), (36, 103559), (37, 103565), (44, 103667), (46, 103679), (49, 103736), (50, 103751), (52, 103772), (59, 103907), (75, 104054), (76, 104060), (80, 104096), (88, 104174), (97, 104246), (107, 104324), (110, 104348),

Gene: Salacia_205 Start: 109906, Stop: 110979, Start Num: 13

Candidate Starts for Salacia_205:

(9, 109879), (Start: 13 @109906 has 171 MA's), (18, 109939), (22, 109972), (30, 110062), (31, 110071), (35, 110167), (37, 110188), (65, 110596), (69, 110626), (72, 110650), (73, 110653), (81, 110713), (84, 110755), (91, 110815), (92, 110827), (98, 110866), (100, 110884), (101, 110890), (102, 110914), (108, 110950), (109, 110959), (112, 110974),

Gene: Sauce_201 Start: 108720, Stop: 109793, Start Num: 13

Candidate Starts for Sauce_201:

(9, 108693), (Start: 13 @108720 has 171 MA's), (18, 108753), (22, 108786), (30, 108876), (31, 108885), (35, 108981), (37, 109002), (65, 109410), (69, 109440), (72, 109464), (73, 109467), (81, 109527), (84, 109569), (91, 109629), (92, 109641), (98, 109680), (100, 109698), (101, 109704), (102, 109728), (108, 109764), (109, 109773), (112, 109788),

Gene: ScoobyDoobyDoo_186 Start: 103679, Stop: 104788, Start Num: 13

Candidate Starts for ScoobyDoobyDoo_186:

(Start: 13 @103679 has 171 MA's), (17, 103700), (27, 103820), (35, 103964), (36, 103979), (38, 104015), (40, 104036), (41, 104060), (50, 104147), (58, 104285), (60, 104306), (66, 104402), (83, 104546), (88, 104585),

Gene: ScottMcG_198 Start: 108527, Stop: 109600, Start Num: 13

Candidate Starts for ScottMcG_198:

(9, 108500), (Start: 13 @108527 has 171 MA's), (18, 108560), (22, 108593), (30, 108683), (31, 108692), (35, 108788), (37, 108809), (65, 109217), (69, 109247), (72, 109271), (73, 109274), (81, 109334), (84, 109376), (91, 109436), (92, 109448), (98, 109487), (100, 109505), (101, 109511), (102, 109535), (108, 109571), (109, 109580), (112, 109595),

Gene: Sebata_206 Start: 111229, Stop: 112302, Start Num: 13

Candidate Starts for Sebata_206:

(9, 111202), (Start: 13 @111229 has 171 MA's), (18, 111262), (22, 111295), (30, 111385), (31, 111394), (35, 111490), (37, 111511), (65, 111919), (69, 111949), (72, 111973), (73, 111976), (81, 112036), (84, 112078), (91, 112138), (92, 112150), (98, 112189), (100, 112207), (101, 112213), (102, 112237), (108, 112273), (109, 112282), (112, 112297),

Gene: Settecandela_115 Start: 83314, Stop: 84369, Start Num: 14

Candidate Starts for Settecandela_115:

(7, 83179), (Start: 14 @83314 has 2 MA's), (21, 83374), (28, 83455), (52, 83776), (55, 83863), (64, 83980), (74, 84043), (75, 84055), (76, 84061), (78, 84073), (81, 84097), (85, 84142), (87, 84166), (95, 84235), (97, 84247), (98, 84250), (99, 84253), (103, 84301), (105, 84310),

Gene: Shaqnato_196 Start: 108937, Stop: 110010, Start Num: 13

Candidate Starts for Shaqnato_196:

(9, 108910), (Start: 13 @108937 has 171 MA's), (18, 108970), (22, 109003), (30, 109093), (31, 109102), (35, 109198), (37, 109219), (65, 109627), (69, 109657), (72, 109681), (73, 109684), (81, 109744), (84, 109786), (91, 109846), (92, 109858), (98, 109897), (100, 109915), (101, 109921), (102, 109945), (108, 109981), (109, 109990), (112, 110005),

Gene: Shelob_206 Start: 111677, Stop: 112750, Start Num: 13

Candidate Starts for Shelob_206:

(9, 111650), (Start: 13 @111677 has 171 MA's), (18, 111710), (22, 111743), (30, 111833), (31, 111842), (35, 111938), (37, 111959), (65, 112367), (69, 112397), (72, 112421), (73, 112424), (81, 112484), (84, 112526), (91, 112586), (92, 112598), (98, 112637), (100, 112655), (101, 112661), (102, 112685), (108, 112721), (109, 112730), (112, 112745),

Gene: ShiaLabeouf_202 Start: 108711, Stop: 109784, Start Num: 13

Candidate Starts for ShiaLabeouf_202:

(9, 108684), (Start: 13 @108711 has 171 MA's), (18, 108744), (22, 108777), (30, 108867), (31, 108876), (35, 108972), (37, 108993), (65, 109401), (69, 109431), (72, 109455), (73, 109458), (81, 109518), (84, 109560), (91, 109620), (92, 109632), (98, 109671), (100, 109689), (101, 109695), (102, 109719), (108, 109755), (109, 109764), (112, 109779),

Gene: Shifa_182 Start: 109288, Stop: 110361, Start Num: 13

Candidate Starts for Shifa_182:

(9, 109261), (Start: 13 @109288 has 171 MA's), (18, 109321), (22, 109354), (30, 109444), (31, 109453), (35, 109549), (37, 109570), (65, 109978), (69, 110008), (72, 110032), (73, 110035), (81, 110095), (84, 110137), (91, 110197), (92, 110209), (98, 110248), (100, 110266), (101, 110272), (102, 110296), (108, 110332), (109, 110341), (112, 110356),

Gene: Shnickers_203 Start: 108775, Stop: 109848, Start Num: 13

Candidate Starts for Shnickers_203:

(9, 108748), (Start: 13 @108775 has 171 MA's), (18, 108808), (22, 108841), (30, 108931), (31, 108940), (35, 109036), (37, 109057), (65, 109465), (69, 109495), (72, 109519), (73, 109522), (81, 109582), (84, 109624), (91, 109684), (92, 109696), (98, 109735), (100, 109753), (101, 109759), (102, 109783), (108, 109819), (109, 109828), (112, 109843),

Gene: Shrimp_207 Start: 110832, Stop: 111905, Start Num: 13

Candidate Starts for Shrimp_207:

(9, 110805), (Start: 13 @110832 has 171 MA's), (18, 110865), (22, 110898), (30, 110988), (31, 110997), (35, 111093), (37, 111114), (65, 111522), (69, 111552), (72, 111576), (73, 111579), (81, 111639), (84, 111681), (91, 111741), (92, 111753), (98, 111792), (100, 111810), (101, 111816), (102, 111840), (108, 111876), (109, 111885), (112, 111900),

Gene: SilverDipper_209 Start: 110324, Stop: 111397, Start Num: 13

Candidate Starts for SilverDipper_209:

(9, 110297), (Start: 13 @110324 has 171 MA's), (18, 110357), (22, 110390), (30, 110480), (31, 110489), (35, 110585), (37, 110606), (65, 111014), (69, 111044), (72, 111068), (73, 111071), (81, 111131), (84, 111173), (91, 111233), (92, 111245), (98, 111284), (100, 111302), (101, 111308), (102, 111332), (108, 111368), (109, 111377), (112, 111392),

Gene: Skog_208 Start: 132502, Stop: 133617, Start Num: 13

Candidate Starts for Skog_208:

(1, 131149), (2, 131212), (3, 131368), (4, 131917), (6, 132355), (Start: 13 @132502 has 171 MA's), (18, 132544), (31, 132679), (36, 132790), (37, 132796), (46, 132910), (49, 132967), (50, 132982), (52, 133003), (71, 133264), (75, 133285), (76, 133291), (80, 133327), (81, 133330), (84, 133372), (88, 133405), (90, 133429), (94, 133456), (98, 133480), (106, 133543), (107, 133555),

Gene: SmallFry_205 Start: 108869, Stop: 109942, Start Num: 13

Candidate Starts for SmallFry_205:

(9, 108842), (Start: 13 @108869 has 171 MA's), (18, 108902), (22, 108935), (30, 109025), (31, 109034), (35, 109130), (37, 109151), (65, 109559), (69, 109589), (72, 109613), (73, 109616), (81, 109676), (84, 109718), (91, 109778), (92, 109790), (98, 109829), (100, 109847), (101, 109853), (102, 109877), (108, 109913), (109, 109922), (112, 109937),

Gene: Spec_200 Start: 109060, Stop: 110133, Start Num: 13

Candidate Starts for Spec_200:

(9, 109033), (Start: 13 @109060 has 171 MA's), (18, 109093), (22, 109126), (30, 109216), (31, 109225), (35, 109321), (37, 109342), (65, 109750), (69, 109780), (72, 109804), (73, 109807), (81, 109867), (84, 109909), (91, 109969), (92, 109981), (98, 110020), (100, 110038), (101, 110044), (102,

110068), (108, 110104), (109, 110113), (112, 110128),

Gene: Specks_209 Start: 111176, Stop: 112249, Start Num: 13

Candidate Starts for Specks_209:

(9, 111149), (Start: 13 @111176 has 171 MA's), (18, 111209), (22, 111242), (30, 111332), (31, 111341), (35, 111437), (37, 111458), (65, 111866), (69, 111896), (72, 111920), (73, 111923), (81, 111983), (84, 112025), (91, 112085), (92, 112097), (98, 112136), (100, 112154), (101, 112160), (102, 112184), (108, 112220), (109, 112229), (112, 112244),

Gene: Sprinklers_203 Start: 109427, Stop: 110500, Start Num: 13

Candidate Starts for Sprinklers_203:

(9, 109400), (Start: 13 @109427 has 171 MA's), (18, 109460), (22, 109493), (30, 109583), (31, 109592), (35, 109688), (37, 109709), (65, 110117), (69, 110147), (72, 110171), (73, 110174), (81, 110234), (84, 110276), (91, 110336), (92, 110348), (98, 110387), (100, 110405), (101, 110411), (102, 110435), (108, 110471), (109, 110480), (112, 110495),

Gene: Spud_199 Start: 109139, Stop: 110212, Start Num: 13

Candidate Starts for Spud_199:

(9, 109112), (Start: 13 @109139 has 171 MA's), (18, 109172), (22, 109205), (30, 109295), (31, 109304), (35, 109400), (37, 109421), (65, 109829), (69, 109859), (72, 109883), (73, 109886), (81, 109946), (84, 109988), (91, 110048), (92, 110060), (98, 110099), (100, 110117), (101, 110123), (102, 110147), (108, 110183), (109, 110192), (112, 110207),

Gene: SrishMeg2525_202 Start: 110303, Stop: 111376, Start Num: 13

Candidate Starts for SrishMeg2525_202:

(9, 110276), (Start: 13 @110303 has 171 MA's), (18, 110336), (22, 110369), (30, 110459), (31, 110468), (35, 110564), (37, 110585), (65, 110993), (69, 111023), (72, 111047), (73, 111050), (81, 111110), (84, 111152), (91, 111212), (92, 111224), (98, 111263), (100, 111281), (101, 111287), (102, 111311), (108, 111347), (109, 111356), (112, 111371),

Gene: StephanieG_201 Start: 110334, Stop: 111407, Start Num: 13

Candidate Starts for StephanieG_201:

(9, 110307), (Start: 13 @110334 has 171 MA's), (18, 110367), (22, 110400), (30, 110490), (31, 110499), (35, 110595), (37, 110616), (65, 111024), (69, 111054), (72, 111078), (73, 111081), (81, 111141), (84, 111183), (91, 111243), (92, 111255), (98, 111294), (100, 111312), (101, 111318), (102, 111342), (108, 111378), (109, 111387), (112, 111402),

Gene: Stormageddon_72 Start: 68324, Stop: 69418, Start Num: 16

Candidate Starts for Stormageddon_72:

(Start: 16 @68324 has 2 MA's), (19, 68369), (23, 68408), (31, 68483), (37, 68600), (50, 68753), (56, 68876), (73, 69071), (75, 69086), (86, 69191), (87, 69197), (96, 69269), (98, 69281), (101, 69305), (103, 69329), (104, 69332), (106, 69341), (111, 69386),

Gene: Stubby_189 Start: 109179, Stop: 110252, Start Num: 13

Candidate Starts for Stubby_189:

(9, 109152), (Start: 13 @109179 has 171 MA's), (18, 109212), (22, 109245), (30, 109335), (31, 109344), (35, 109440), (37, 109461), (65, 109869), (69, 109899), (72, 109923), (73, 109926), (81, 109986), (84, 110028), (91, 110088), (92, 110100), (98, 110139), (100, 110157), (101, 110163), (102, 110187), (108, 110223), (109, 110232), (112, 110247),

Gene: StubbySaigey_210 Start: 109858, Stop: 110931, Start Num: 13

Candidate Starts for StubbySaigey_210:

(9, 109831), (Start: 13 @109858 has 171 MA's), (18, 109891), (22, 109924), (30, 110014), (31, 110023), (35, 110119), (37, 110140), (65, 110548), (69, 110578), (72, 110602), (73, 110605), (81, 110665), (84, 110707), (91, 110767), (92, 110779), (98, 110818), (100, 110836), (101, 110842), (102, 110866), (108, 110902), (109, 110911), (112, 110926),

Gene: Teardrop_202 Start: 108371, Stop: 109444, Start Num: 13

Candidate Starts for Teardrop_202:

(9, 108344), (Start: 13 @108371 has 171 MA's), (18, 108404), (22, 108437), (30, 108527), (31, 108536), (35, 108632), (37, 108653), (65, 109061), (69, 109091), (72, 109115), (73, 109118), (81, 109178), (84, 109220), (91, 109280), (92, 109292), (98, 109331), (100, 109349), (101, 109355), (102, 109379), (108, 109415), (109, 109424), (112, 109439),

Gene: TinyTim_203 Start: 109152, Stop: 110225, Start Num: 13

Candidate Starts for TinyTim_203:

(9, 109125), (Start: 13 @109152 has 171 MA's), (18, 109185), (22, 109218), (30, 109308), (31, 109317), (35, 109413), (37, 109434), (65, 109842), (69, 109872), (72, 109896), (73, 109899), (81, 109959), (84, 110001), (91, 110061), (92, 110073), (98, 110112), (100, 110130), (101, 110136), (102, 110160), (108, 110196), (109, 110205), (112, 110220),

Gene: Tonenili_226 Start: 115973, Stop: 117046, Start Num: 13

Candidate Starts for Tonenili_226:

(6, 115823), (Start: 13 @115973 has 171 MA's), (18, 116006), (22, 116039), (24, 116066), (35, 116234), (37, 116255), (65, 116663), (72, 116717), (73, 116720), (81, 116780), (84, 116822), (91, 116882), (98, 116933), (100, 116951), (101, 116957), (102, 116981), (103, 116984), (108, 117017), (109, 117026), (112, 117041),

Gene: Tortoise16_203 Start: 109614, Stop: 110687, Start Num: 13

Candidate Starts for Tortoise16_203:

(9, 109587), (Start: 13 @109614 has 171 MA's), (18, 109647), (22, 109680), (30, 109770), (31, 109779), (35, 109875), (37, 109896), (65, 110304), (69, 110334), (72, 110358), (73, 110361), (81, 110421), (84, 110463), (91, 110523), (92, 110535), (98, 110574), (100, 110592), (101, 110598), (102, 110622), (108, 110658), (109, 110667), (112, 110682),

Gene: Trinitium_201 Start: 108899, Stop: 109972, Start Num: 13

Candidate Starts for Trinitium_201:

(9, 108872), (Start: 13 @108899 has 171 MA's), (18, 108932), (22, 108965), (30, 109055), (31, 109064), (35, 109160), (37, 109181), (65, 109589), (69, 109619), (72, 109643), (73, 109646), (81, 109706), (84, 109748), (91, 109808), (92, 109820), (98, 109859), (100, 109877), (101, 109883), (102, 109907), (108, 109943), (109, 109952), (112, 109967),

Gene: Turret_198 Start: 108481, Stop: 109554, Start Num: 13

Candidate Starts for Turret_198:

(9, 108454), (Start: 13 @108481 has 171 MA's), (18, 108514), (22, 108547), (30, 108637), (31, 108646), (35, 108742), (37, 108763), (65, 109171), (69, 109201), (72, 109225), (73, 109228), (81, 109288), (84, 109330), (91, 109390), (92, 109402), (98, 109441), (100, 109459), (101, 109465), (102, 109489), (108, 109525), (109, 109534), (112, 109549),

Gene: Tyke_203 Start: 110981, Stop: 112054, Start Num: 13

Candidate Starts for Tyke_203:

(9, 110954), (Start: 13 @110981 has 171 MA's), (18, 111014), (22, 111047), (30, 111137), (31, 111146), (35, 111242), (37, 111263), (65, 111671), (69, 111701), (72, 111725), (73, 111728), (81, 111788), (84, 111830), (91, 111890), (92, 111902), (98, 111941), (100, 111959), (101, 111965), (102, 111989), (108, 112025), (109, 112034), (112, 112049),

Gene: ValleyTerrace_206 Start: 109065, Stop: 110138, Start Num: 13

Candidate Starts for ValleyTerrace_206:

(9, 109038), (Start: 13 @109065 has 171 MA's), (18, 109098), (22, 109131), (30, 109221), (31, 109230), (35, 109326), (37, 109347), (65, 109755), (69, 109785), (72, 109809), (73, 109812), (81, 109872), (84, 109914), (91, 109974), (92, 109986), (98, 110025), (100, 110043), (101, 110049), (102, 110073), (108, 110109), (109, 110118), (112, 110133),

Gene: Wally_203 Start: 109049, Stop: 110122, Start Num: 13

Candidate Starts for Wally_203:

(9, 109022), (Start: 13 @109049 has 171 MA's), (18, 109082), (22, 109115), (30, 109205), (31, 109214), (35, 109310), (37, 109331), (65, 109739), (69, 109769), (72, 109793), (73, 109796), (81, 109856), (84, 109898), (91, 109958), (92, 109970), (98, 110009), (100, 110027), (101, 110033), (102, 110057), (108, 110093), (109, 110102), (112, 110117),

Gene: Willis_206 Start: 109963, Stop: 111036, Start Num: 13

Candidate Starts for Willis_206:

(9, 109936), (Start: 13 @109963 has 171 MA's), (18, 109996), (22, 110029), (30, 110119), (31, 110128), (35, 110224), (37, 110245), (65, 110653), (69, 110683), (72, 110707), (73, 110710), (81, 110770), (84, 110812), (91, 110872), (92, 110884), (98, 110923), (100, 110941), (101, 110947), (102, 110971), (108, 111007), (109, 111016), (112, 111031),

Gene: Yassified_202 Start: 109404, Stop: 110477, Start Num: 13

Candidate Starts for Yassified_202:

(9, 109377), (Start: 13 @109404 has 171 MA's), (18, 109437), (22, 109470), (30, 109560), (31, 109569), (35, 109665), (37, 109686), (65, 110094), (69, 110124), (72, 110148), (73, 110151), (81, 110211), (84, 110253), (91, 110313), (92, 110325), (98, 110364), (100, 110382), (101, 110388), (102, 110412), (108, 110448), (109, 110457), (112, 110472),

Gene: YemiJoy2021_206 Start: 110719, Stop: 111792, Start Num: 13

Candidate Starts for YemiJoy2021_206:

(9, 110692), (Start: 13 @110719 has 171 MA's), (18, 110752), (22, 110785), (30, 110875), (31, 110884), (35, 110980), (37, 111001), (65, 111409), (69, 111439), (72, 111463), (73, 111466), (81, 111526), (84, 111568), (91, 111628), (92, 111640), (98, 111679), (100, 111697), (101, 111703), (102, 111727), (108, 111763), (109, 111772), (112, 111787),

Gene: YoungMoneyMata_203 Start: 109261, Stop: 110334, Start Num: 13

Candidate Starts for YoungMoneyMata_203:

(9, 109234), (Start: 13 @109261 has 171 MA's), (18, 109294), (22, 109327), (30, 109417), (31, 109426), (35, 109522), (37, 109543), (65, 109951), (69, 109981), (72, 110005), (73, 110008), (81, 110068), (84, 110110), (91, 110170), (92, 110182), (98, 110221), (100, 110239), (101, 110245), (102, 110269), (108, 110305), (109, 110314), (112, 110329),

Gene: Yucca_205 Start: 110711, Stop: 111784, Start Num: 13

Candidate Starts for Yucca_205:

(9, 110684), (Start: 13 @110711 has 171 MA's), (18, 110744), (22, 110777), (30, 110867), (31, 110876), (35, 110972), (37, 110993), (65, 111401), (69, 111431), (72, 111455), (73, 111458), (81, 111518), (84, 111560), (91, 111620), (92, 111632), (98, 111671), (100, 111689), (101, 111695), (102, 111719), (108, 111755), (109, 111764), (112, 111779),

Gene: Zalkecks_204 Start: 109792, Stop: 110865, Start Num: 13

Candidate Starts for Zalkecks_204:

(9, 109765), (Start: 13 @109792 has 171 MA's), (18, 109825), (22, 109858), (30, 109948), (31, 109957), (35, 110053), (37, 110074), (65, 110482), (69, 110512), (72, 110536), (73, 110539), (81, 110599), (84, 110641), (91, 110701), (92, 110713), (98, 110752), (100, 110770), (101, 110776), (102, 110800), (108, 110836), (109, 110845), (112, 110860),

Gene: Zeenon_207 Start: 110363, Stop: 111436, Start Num: 13

Candidate Starts for Zeenon_207:

(9, 110336), (Start: 13 @110363 has 171 MA's), (18, 110396), (22, 110429), (30, 110519), (31, 110528), (35, 110624), (37, 110645), (65, 111053), (69, 111083), (72, 111107), (73, 111110), (81, 111170), (84, 111212), (91, 111272), (92, 111284), (98, 111323), (100, 111341), (101, 111347), (102, 111371), (108, 111407), (109, 111416), (112, 111431),

Gene: ZygoTaiga_202 Start: 110983, Stop: 112056, Start Num: 13

Candidate Starts for ZygoTaiga_202:

(9, 110956), (Start: 13 @110983 has 171 MA's), (18, 111016), (22, 111049), (30, 111139), (31, 111148), (35, 111244), (37, 111265), (65, 111673), (69, 111703), (72, 111727), (73, 111730), (81, 111790), (84, 111832), (91, 111892), (92, 111904), (98, 111943), (100, 111961), (101, 111967), (102, 111991), (108, 112027), (109, 112036), (112, 112051),