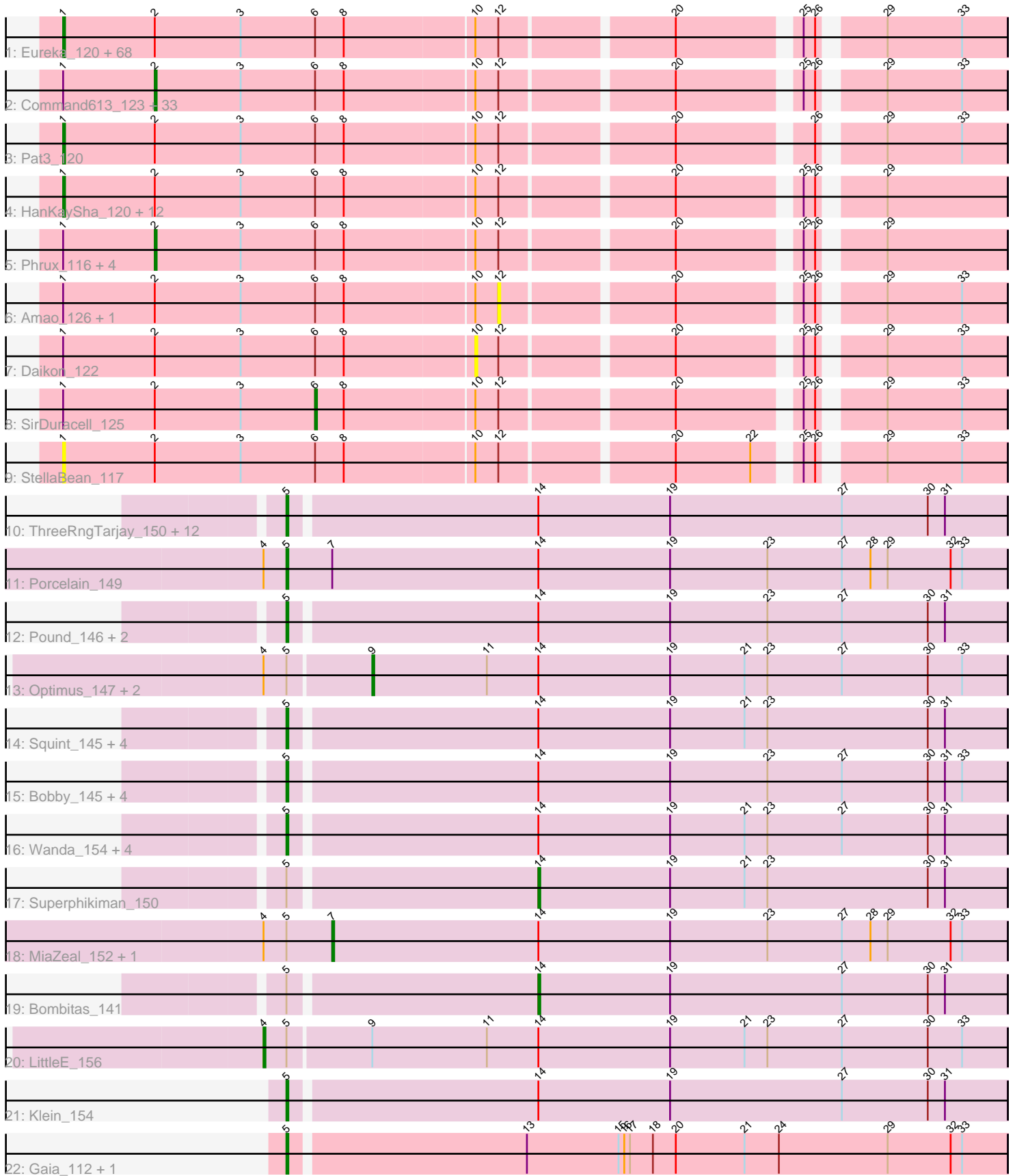


Pham 157631



Note: Tracks are now grouped by subcluster and scaled. Switching in subcluster is indicated by changes in track color. Track scale is now set by default to display the region 30 bp upstream of start 1 to 30 bp downstream of the last possible start. If this default region is judged to be packed too tightly with annotated starts, the track will be further scaled to only show that region of the ORF with annotated starts. This action will be indicated by adding "Zoomed" to the title. For starts, yellow indicates the location of called starts comprised solely of Glimmer/GeneMark auto-annotations, green indicates the location of called starts with at least 1 manual gene annotation.

Pham 157631 Report

This analysis was run 04/13/24 on database version 558.

Pham number 157631 has 170 members, 13 are drafts.

Phages represented in each track:

- Track 1 : Eureka_120, HuffyPuff_122, MadamMonkfish_121, Porky_120, Stank_123, Misfit_121, Bruin_117, GooberAzure_122, Dumbo_122, Marshmallow_122, Hopey_120, Wiggin_123, TeardropMSU_120, Lilpickle_121, Goldilocks_124, Kimchi_125, Elite2014_121, Xandras_118, Murica_124, CrystalP_121, Teaspoon_116, Emmina_120, Argent26_124, Gemini_125, Tarkin_119, Buck_121, Henry_122, YassJohnny_117, Cookies_122, Bask21_125, Tuco_125, Adnama_124, Terminus_123, Holt_126, Phaux_122, ChosenOne_122, Quallification_121, MPhalcon_121, Easy2Say_120, Simpliphy_118, Mindy_123, Saints25_116, ChotaBhai_124, Highbury_116, xkcd_124, Lilac_121, GoldenSpark_124, Moldemort_122, Youngblood_124, Myrale_121, Rakim_122, Goku_120, BilboSwaggins_120, Petra64142_123, SophKB_119, Dusk_120, OrionPax_117, NoSleep_120, Toto_119, Maxxinista_122, Icee_125, Sassay_115, Gage_122, Pharsalus_119, Paperbeatsrock_119, Willez_116, MISSy_121, PhatBacter_123, RiverMonster_119
- Track 2 : Command613_123, Harella_126, Tomaszewski_115, Nimrod_121, JeTaimé_119, Miniwave_114, Murphy_119, NelitzaMV_117, Gator_123, BaboJay_120, IHOP_123, Pumpkin_121, TBrady12_124, DrDrey_124, Inca_120, Sotrice96_125, ABCat_121, Manda_121, Ukulele_115, Kostya_123, BadStone_121, Rimmer_118, 244_122, StolenFromERC_122, Hoonter_123, Cactus_128, Mosby_117, Glexan_124, FireRed_123, Kanye_117, ShereKhan_118, ShamWow_121, Contagion_117, Phaja_123
- Track 3 : Pat3_120
- Track 4 : HanKaySha_120, Lilizi_120, DoctorDiddles_119, Nala_122, Flypotenuse_116, Cjw1_120, Stark_119, Asriel_118, Thresher_121, Balomoji_121, Czyszczonek1_120, Traaww1_117, AmericanBeauty_127
- Track 5 : Phrux_116, Barbarian_120, Bench_122, Filch_123, Elph10_119
- Track 6 : Amao_126, BigBubba_119
- Track 7 : Daikon_122
- Track 8 : SirDuracell_125
- Track 9 : StellaBean_117
- Track 10 : ThreeRngTarjay_150, Duke13_152, Yeet_147, Redno2_148, NihilNomen_156, Zelink_149, Kalah2_146, Dallas_155, Phoebus_155, EricMillard_148, Beem_156, JuicyJay_149, Hughesyang_154
- Track 11 : Porcelain_149
- Track 12 : Pound_146, Schatzie_150, Dove_149
- Track 13 : Optimus_147, BAKA_156, Omega_160

- Track 14 : Squint_145, HokkenD_149, Courthouse_148, Ariel_152, Hannaconda_147
- Track 15 : Bobby_145, Constella_147, Odette_159, Thibault_137, KashFlow_153
- Track 16 : Wanda_154, Ejimix_147, DmpstrDiver_155, Minerva_154, Halley_156
- Track 17 : Superphikiman_150
- Track 18 : MiaZeal_152, Lucky2013_145
- Track 19 : Bombitas_141
- Track 20 : LittleE_156
- Track 21 : Klein_154
- Track 22 : Gaia_112, Nebkiss_113

Summary of Final Annotations (See graph section above for start numbers):

The start number called the most often in the published annotations is 1, it was called in 76 of the 157 non-draft genes in the pham.

Genes that call this "Most Annotated" start:

- Adnama_124, AmericanBeauty_127, Argent26_124, Asriel_118, Balomoji_121, Bask21_125, BilboSwaggins_120, Bruin_117, Buck_121, ChosenOne_122, ChotaBhai_124, Cjw1_120, Cookies_122, CrystalP_121, Czyszczone1_120, DoctorDiddles_119, Dumbo_122, Dusk_120, Easy2Say_120, Elite2014_121, Emmina_120, Eureka_120, Flypotenuse_116, Gage_122, Gemini_125, Goku_120, GoldenSpark_124, Goldilocks_124, GooberAzure_122, HanKaySha_120, Henry_122, Highbury_116, Holt_126, Hopey_120, HufflyPuff_122, Icee_125, Kimchi_125, Lilac_121, Lilizi_120, Lilpickle_121, MISSy_121, MPhalcon_121, MadamMonkfish_121, Marshmallow_122, Maxxinista_122, Mindy_123, Misfit_121, Moldemort_122, Murica_124, Myrale_121, Nala_122, NoSleep_120, OrionPax_117, Paperbeatsrock_119, Pat3_120, Petra64142_123, Pharsalus_119, PhatBacter_123, Phaux_122, Porky_120, Quallification_121, Rakim_122, RiverMonster_119, Saints25_116, Sassay_115, Simpliphy_118, SophKB_119, Stank_123, Stark_119, StellaBean_117, Tarkin_119, TeardropMSU_120, Teaspoon_116, Terminus_123, Thresher_121, Toto_119, Traaww1_117, Tuco_125, Wiggin_123, Willez_116, Xandras_118, YassJohnny_117, Youngblood_124, xkcd_124,

Genes that have the "Most Annotated" start but do not call it:

- 244_122, ABCat_121, Amao_126, BaboJay_120, BadStone_121, Barbarian_120, Bench_122, BigBubba_119, Cactus_128, Command613_123, Contagion_117, Daikon_122, DrDrey_124, Elph10_119, Filch_123, FireRed_123, Gator_123, Glexan_124, Harella_126, Hoonter_123, IHOP_123, Inca_120, JeTaime_119, Kanye_117, Kostya_123, Manda_121, Miniwave_114, Mosby_117, Murphy_119, NelitzaMV_117, Nimrod_121, Phaja_123, Phrux_116, Pumpkin_121, Rimmer_118, ShamWow_121, ShereKhan_118, SirDuracell_125, Sotrice96_125, StolenFromERC_122, TBrady12_124, Tomaszewski_115, Ukulele_115,

Genes that do not have the "Most Annotated" start:

- Ariel_152, BAKA_156, Beem_156, Bobby_145, Bombitas_141, Constella_147, Courthouse_148, Dallas_155, DmpstrDiver_155, Dove_149, Duke13_152, Ejimix_147, EricMillard_148, Gaia_112, Halley_156, Hannaconda_147, HokkenD_149, Hughesyang_154, JuicyJay_149, Kalah2_146, KashFlow_153, Klein_154, LittleE_156, Lucky2013_145, MiaZeal_152, Minerva_154, Nebkiss_113,

NihilNomen_156, Odette_159, Omega_160, Optimus_147, Phoebus_155, Porcelain_149, Pound_146, Redno2_148, Schatzie_150, Squint_145, Superphikiman_150, Thibault_137, ThreeRngTarjay_150, Wanda_154, Yeet_147, Zelink_149,

Summary by start number:

Start 1:

- Found in 127 of 170 (74.7%) of genes in pham
- Manual Annotations of this start: 76 of 157
- Called 66.1% of time when present
- Phage (with cluster) where this start called: Adnama_124 (E), AmericanBeauty_127 (E), Argent26_124 (E), Asriel_118 (E), Balomoji_121 (E), Bask21_125 (E), BilboSwaggins_120 (E), Bruin_117 (E), Buck_121 (E), ChosenOne_122 (E), ChotaBhai_124 (E), Cjw1_120 (E), Cookies_122 (E), CrystalP_121 (E), Czystczon1_120 (E), DoctorDiddles_119 (E), Dumbo_122 (E), Dusk_120 (E), Easy2Say_120 (E), Elite2014_121 (E), Emmina_120 (E), Eureka_120 (E), Flypotenuse_116 (E), Gage_122 (E), Gemini_125 (E), Goku_120 (E), GoldenSpark_124 (E), Goldilocks_124 (E), GooberAzure_122 (E), HanKaySha_120 (E), Henry_122 (E), Highbury_116 (E), Holt_126 (E), Hopey_120 (E), HuffyPuff_122 (E), Icee_125 (E), Kimchi_125 (E), Lilac_121 (E), Lilizi_120 (E), Lilpickle_121 (E), MISSy_121 (E), MPhalcon_121 (E), MadamMonkfish_121 (E), Marshmallow_122 (E), Maxxinista_122 (E), Mindy_123 (E), Misfit_121 (E), Moldemort_122 (E), Murica_124 (E), Myrale_121 (E), Nala_122 (E), NoSleep_120 (E), OrionPax_117 (E), Paperbeatsrock_119 (E), Pat3_120 (E), Petra64142_123 (E), Pharsalus_119 (E), PhatBacter_123 (E), Phaux_122 (E), Porky_120 (E), Qualification_121 (E), Rakim_122 (E), RiverMonster_119 (E), Saints25_116 (E), Sassay_115 (E), Simpliphy_118 (E), SophKB_119 (E), Stank_123 (E), Stark_119 (E), StellaBean_117 (E), Tarkin_119 (E), TeardropMSU_120 (E), Teaspoon_116 (E), Terminus_123 (E), Thresher_121 (E), Toto_119 (E), Traaww1_117 (E), Tuco_125 (E), Wiggin_123 (E), Willez_116 (E), Xandras_118 (E), YassJohnny_117 (E), Youngblood_124 (E), xkcd_124 (E),

Start 2:

- Found in 127 of 170 (74.7%) of genes in pham
- Manual Annotations of this start: 39 of 157
- Called 30.7% of time when present
- Phage (with cluster) where this start called: 244_122 (E), ABCat_121 (E), BaboJay_120 (E), BadStone_121 (E), Barbarian_120 (E), Bench_122 (E), Cactus_128 (E), Command613_123 (E), Contagion_117 (E), DrDrey_124 (E), Elph10_119 (E), Filch_123 (E), FireRed_123 (E), Gator_123 (E), Glexan_124 (E), Harella_126 (E), Hoonter_123 (E), IHOP_123 (E), Inca_120 (E), JeTaime_119 (E), Kanye_117 (E), Kostya_123 (E), Manda_121 (E), Miniwave_114 (E), Mosby_117 (E), Murphy_119 (E), NelitzaMV_117 (E), Nimrod_121 (E), Phaja_123 (E), Phrux_116 (E), Pumpkin_121 (E), Rimmer_118 (E), ShamWow_121 (E), ShereKhan_118 (E), Sotrice96_125 (E), StolenFromERC_122 (E), TBrady12_124 (E), Tomaszewski_115 (E), Ukulele_115 (E),

Start 4:

- Found in 7 of 170 (4.1%) of genes in pham
- Manual Annotations of this start: 1 of 157
- Called 14.3% of time when present
- Phage (with cluster) where this start called: LittleE_156 (J),

Start 5:

- Found in 43 of 170 (25.3%) of genes in pham
- Manual Annotations of this start: 33 of 157
- Called 81.4% of time when present
- Phage (with cluster) where this start called: Ariel_152 (J), Beem_156 (J), Bobby_145 (J), Constella_147 (J), Courthouse_148 (J), Dallas_155 (J), DmpstrDiver_155 (J), Dove_149 (J), Duke13_152 (J), Ejimix_147 (J), EricMillard_148 (J), Gaia_112 (X), Halley_156 (J), Hannaconda_147 (J), HokkenD_149 (J), Hughesyang_154 (J), JuicyJay_149 (J), Kalah2_146 (J), KashFlow_153 (J), Klein_154 (J), Minerva_154 (J), Nebkiss_113 (X), NihilNomen_156 (J), Odette_159 (J), Phoebus_155 (J), Porcelain_149 (J), Pound_146 (J), Redno2_148 (J), Schatzie_150 (J), Squint_145 (J), Thibault_137 (J), ThreeRngTarjay_150 (J), Wanda_154 (J), Yeet_147 (J), Zelink_149 (J),

Start 6:

- Found in 127 of 170 (74.7%) of genes in pham
- Manual Annotations of this start: 1 of 157
- Called 0.8% of time when present
- Phage (with cluster) where this start called: SirDuracell_125 (E),

Start 7:

- Found in 3 of 170 (1.8%) of genes in pham
- Manual Annotations of this start: 2 of 157
- Called 66.7% of time when present
- Phage (with cluster) where this start called: Lucky2013_145 (J), MiaZeal_152 (J),

Start 9:

- Found in 4 of 170 (2.4%) of genes in pham
- Manual Annotations of this start: 3 of 157
- Called 75.0% of time when present
- Phage (with cluster) where this start called: BAKA_156 (J), Omega_160 (J), Optimus_147 (J),

Start 10:

- Found in 127 of 170 (74.7%) of genes in pham
- No Manual Annotations of this start.
- Called 0.8% of time when present
- Phage (with cluster) where this start called: Daikon_122 (E),

Start 12:

- Found in 127 of 170 (74.7%) of genes in pham
- No Manual Annotations of this start.
- Called 1.6% of time when present
- Phage (with cluster) where this start called: Amao_126 (E), BigBubba_119 (E),

Start 14:

- Found in 41 of 170 (24.1%) of genes in pham
- Manual Annotations of this start: 2 of 157
- Called 4.9% of time when present
- Phage (with cluster) where this start called: Bombitas_141 (J), Superphikiman_150 (J),

Summary by clusters:

There are 3 clusters represented in this pham: X, J, E,

Info for manual annotations of cluster E:

- Start number 1 was manually annotated 76 times for cluster E.
- Start number 2 was manually annotated 39 times for cluster E.
- Start number 6 was manually annotated 1 time for cluster E.

Info for manual annotations of cluster J:

- Start number 4 was manually annotated 1 time for cluster J.
- Start number 5 was manually annotated 31 times for cluster J.
- Start number 7 was manually annotated 2 times for cluster J.
- Start number 9 was manually annotated 3 times for cluster J.
- Start number 14 was manually annotated 2 times for cluster J.

Info for manual annotations of cluster X:

- Start number 5 was manually annotated 2 times for cluster X.

Gene Information:

Gene: 244_122 Start: 66999, Stop: 67412, Start Num: 2

Candidate Starts for 244_122:

(Start: 1 @66951 has 76 MA's), (Start: 2 @66999 has 39 MA's), (3, 67044), (Start: 6 @67083 has 1 MA's), (8, 67098), (10, 67164), (12, 67176), (20, 67260), (25, 67317), (26, 67323), (29, 67350), (33, 67389),

Gene: ABCat_121 Start: 68482, Stop: 68895, Start Num: 2

Candidate Starts for ABCat_121:

(Start: 1 @68434 has 76 MA's), (Start: 2 @68482 has 39 MA's), (3, 68527), (Start: 6 @68566 has 1 MA's), (8, 68581), (10, 68647), (12, 68659), (20, 68743), (25, 68800), (26, 68806), (29, 68833), (33, 68872),

Gene: Adnama_124 Start: 66864, Stop: 67325, Start Num: 1

Candidate Starts for Adnama_124:

(Start: 1 @66864 has 76 MA's), (Start: 2 @66912 has 39 MA's), (3, 66957), (Start: 6 @66996 has 1 MA's), (8, 67011), (10, 67077), (12, 67089), (20, 67173), (25, 67230), (26, 67236), (29, 67263), (33, 67302),

Gene: Amao_126 Start: 68317, Stop: 68553, Start Num: 12

Candidate Starts for Amao_126:

(Start: 1 @68092 has 76 MA's), (Start: 2 @68140 has 39 MA's), (3, 68185), (Start: 6 @68224 has 1 MA's), (8, 68239), (10, 68305), (12, 68317), (20, 68401), (25, 68458), (26, 68464), (29, 68491), (33, 68530),

Gene: AmericanBeauty_127 Start: 66906, Stop: 67367, Start Num: 1

Candidate Starts for AmericanBeauty_127:

(Start: 1 @66906 has 76 MA's), (Start: 2 @66954 has 39 MA's), (3, 66999), (Start: 6 @67038 has 1 MA's), (8, 67053), (10, 67119), (12, 67131), (20, 67215), (25, 67272), (26, 67278), (29, 67305),

Gene: Argent26_124 Start: 66788, Stop: 67249, Start Num: 1

Candidate Starts for Argent26_124:

(Start: 1 @66788 has 76 MA's), (Start: 2 @66836 has 39 MA's), (3, 66881), (Start: 6 @66920 has 1 MA's), (8, 66935), (10, 67001), (12, 67013), (20, 67097), (25, 67154), (26, 67160), (29, 67187), (33, 67226),

Gene: Ariel_152 Start: 78205, Stop: 78576, Start Num: 5

Candidate Starts for Ariel_152:

(Start: 5 @78205 has 33 MA's), (Start: 14 @78331 has 2 MA's), (19, 78400), (21, 78439), (23, 78451), (30, 78535), (31, 78544),

Gene: Asriel_118 Start: 65739, Stop: 66200, Start Num: 1

Candidate Starts for Asriel_118:

(Start: 1 @65739 has 76 MA's), (Start: 2 @65787 has 39 MA's), (3, 65832), (Start: 6 @65871 has 1 MA's), (8, 65886), (10, 65952), (12, 65964), (20, 66048), (25, 66105), (26, 66111), (29, 66138),

Gene: BAKA_156 Start: 82409, Stop: 82741, Start Num: 9

Candidate Starts for BAKA_156:

(Start: 4 @82355 has 1 MA's), (Start: 5 @82367 has 33 MA's), (Start: 9 @82409 has 3 MA's), (11, 82469), (Start: 14 @82496 has 2 MA's), (19, 82565), (21, 82604), (23, 82616), (27, 82655), (30, 82700), (33, 82718),

Gene: BaboJay_120 Start: 68172, Stop: 68585, Start Num: 2

Candidate Starts for BaboJay_120:

(Start: 1 @68124 has 76 MA's), (Start: 2 @68172 has 39 MA's), (3, 68217), (Start: 6 @68256 has 1 MA's), (8, 68271), (10, 68337), (12, 68349), (20, 68433), (25, 68490), (26, 68496), (29, 68523), (33, 68562),

Gene: BadStone_121 Start: 68030, Stop: 68443, Start Num: 2

Candidate Starts for BadStone_121:

(Start: 1 @67982 has 76 MA's), (Start: 2 @68030 has 39 MA's), (3, 68075), (Start: 6 @68114 has 1 MA's), (8, 68129), (10, 68195), (12, 68207), (20, 68291), (25, 68348), (26, 68354), (29, 68381), (33, 68420),

Gene: Balomoji_121 Start: 67522, Stop: 67983, Start Num: 1

Candidate Starts for Balomoji_121:

(Start: 1 @67522 has 76 MA's), (Start: 2 @67570 has 39 MA's), (3, 67615), (Start: 6 @67654 has 1 MA's), (8, 67669), (10, 67735), (12, 67747), (20, 67831), (25, 67888), (26, 67894), (29, 67921),

Gene: Barbarian_120 Start: 65787, Stop: 66200, Start Num: 2

Candidate Starts for Barbarian_120:

(Start: 1 @65739 has 76 MA's), (Start: 2 @65787 has 39 MA's), (3, 65832), (Start: 6 @65871 has 1 MA's), (8, 65886), (10, 65952), (12, 65964), (20, 66048), (25, 66105), (26, 66111), (29, 66138),

Gene: Bask21_125 Start: 66894, Stop: 67355, Start Num: 1

Candidate Starts for Bask21_125:

(Start: 1 @66894 has 76 MA's), (Start: 2 @66942 has 39 MA's), (3, 66987), (Start: 6 @67026 has 1 MA's), (8, 67041), (10, 67107), (12, 67119), (20, 67203), (25, 67260), (26, 67266), (29, 67293), (33, 67332),

Gene: Beem_156 Start: 82489, Stop: 82860, Start Num: 5

Candidate Starts for Beem_156:

(Start: 5 @82489 has 33 MA's), (Start: 14 @82615 has 2 MA's), (19, 82684), (27, 82774), (30, 82819), (31, 82828),

Gene: Bench_122 Start: 67593, Stop: 68006, Start Num: 2

Candidate Starts for Bench_122:

(Start: 1 @67545 has 76 MA's), (Start: 2 @67593 has 39 MA's), (3, 67638), (Start: 6 @67677 has 1 MA's), (8, 67692), (10, 67758), (12, 67770), (20, 67854), (25, 67911), (26, 67917), (29, 67944),

Gene: BigBubba_119 Start: 66822, Stop: 67058, Start Num: 12

Candidate Starts for BigBubba_119:

(Start: 1 @66597 has 76 MA's), (Start: 2 @66645 has 39 MA's), (3, 66690), (Start: 6 @66729 has 1 MA's), (8, 66744), (10, 66810), (12, 66822), (20, 66906), (25, 66963), (26, 66969), (29, 66996), (33, 67035),

Gene: BilboSwaggins_120 Start: 68019, Stop: 68480, Start Num: 1

Candidate Starts for BilboSwaggins_120:

(Start: 1 @68019 has 76 MA's), (Start: 2 @68067 has 39 MA's), (3, 68112), (Start: 6 @68151 has 1 MA's), (8, 68166), (10, 68232), (12, 68244), (20, 68328), (25, 68385), (26, 68391), (29, 68418), (33, 68457),

Gene: Bobby_145 Start: 82800, Stop: 83171, Start Num: 5

Candidate Starts for Bobby_145:

(Start: 5 @82800 has 33 MA's), (Start: 14 @82926 has 2 MA's), (19, 82995), (23, 83046), (27, 83085), (30, 83130), (31, 83139), (33, 83148),

Gene: Bombitas_141 Start: 79468, Stop: 79713, Start Num: 14

Candidate Starts for Bombitas_141:

(Start: 5 @79342 has 33 MA's), (Start: 14 @79468 has 2 MA's), (19, 79537), (27, 79627), (30, 79672), (31, 79681),

Gene: Bruin_117 Start: 66229, Stop: 66690, Start Num: 1

Candidate Starts for Bruin_117:

(Start: 1 @66229 has 76 MA's), (Start: 2 @66277 has 39 MA's), (3, 66322), (Start: 6 @66361 has 1 MA's), (8, 66376), (10, 66442), (12, 66454), (20, 66538), (25, 66595), (26, 66601), (29, 66628), (33, 66667),

Gene: Buck_121 Start: 68045, Stop: 68506, Start Num: 1

Candidate Starts for Buck_121:

(Start: 1 @68045 has 76 MA's), (Start: 2 @68093 has 39 MA's), (3, 68138), (Start: 6 @68177 has 1 MA's), (8, 68192), (10, 68258), (12, 68270), (20, 68354), (25, 68411), (26, 68417), (29, 68444), (33, 68483),

Gene: Cactus_128 Start: 67390, Stop: 67803, Start Num: 2

Candidate Starts for Cactus_128:

(Start: 1 @67342 has 76 MA's), (Start: 2 @67390 has 39 MA's), (3, 67435), (Start: 6 @67474 has 1 MA's), (8, 67489), (10, 67555), (12, 67567), (20, 67651), (25, 67708), (26, 67714), (29, 67741), (33, 67780),

Gene: ChosenOne_122 Start: 67019, Stop: 67480, Start Num: 1

Candidate Starts for ChosenOne_122:

(Start: 1 @67019 has 76 MA's), (Start: 2 @67067 has 39 MA's), (3, 67112), (Start: 6 @67151 has 1 MA's), (8, 67166), (10, 67232), (12, 67244), (20, 67328), (25, 67385), (26, 67391), (29, 67418), (33, 67457),

Gene: ChotaBhai_124 Start: 67741, Stop: 68202, Start Num: 1

Candidate Starts for ChotaBhai_124:

(Start: 1 @67741 has 76 MA's), (Start: 2 @67789 has 39 MA's), (3, 67834), (Start: 6 @67873 has 1 MA's), (8, 67888), (10, 67954), (12, 67966), (20, 68050), (25, 68107), (26, 68113), (29, 68140), (33, 68179),

Gene: Cjw1_120 Start: 68238, Stop: 68699, Start Num: 1

Candidate Starts for Cjw1_120:

(Start: 1 @68238 has 76 MA's), (Start: 2 @68286 has 39 MA's), (3, 68331), (Start: 6 @68370 has 1 MA's), (8, 68385), (10, 68451), (12, 68463), (20, 68547), (25, 68604), (26, 68610), (29, 68637),

Gene: Command613_123 Start: 67563, Stop: 67976, Start Num: 2

Candidate Starts for Command613_123:

(Start: 1 @67515 has 76 MA's), (Start: 2 @67563 has 39 MA's), (3, 67608), (Start: 6 @67647 has 1 MA's), (8, 67662), (10, 67728), (12, 67740), (20, 67824), (25, 67881), (26, 67887), (29, 67914), (33, 67953),

Gene: Constella_147 Start: 80551, Stop: 80922, Start Num: 5

Candidate Starts for Constella_147:

(Start: 5 @80551 has 33 MA's), (Start: 14 @80677 has 2 MA's), (19, 80746), (23, 80797), (27, 80836), (30, 80881), (31, 80890), (33, 80899),

Gene: Contagion_117 Start: 66639, Stop: 67052, Start Num: 2

Candidate Starts for Contagion_117:

(Start: 1 @66591 has 76 MA's), (Start: 2 @66639 has 39 MA's), (3, 66684), (Start: 6 @66723 has 1 MA's), (8, 66738), (10, 66804), (12, 66816), (20, 66900), (25, 66957), (26, 66963), (29, 66990), (33, 67029),

Gene: Cookies_122 Start: 67825, Stop: 68286, Start Num: 1

Candidate Starts for Cookies_122:

(Start: 1 @67825 has 76 MA's), (Start: 2 @67873 has 39 MA's), (3, 67918), (Start: 6 @67957 has 1 MA's), (8, 67972), (10, 68038), (12, 68050), (20, 68134), (25, 68191), (26, 68197), (29, 68224), (33, 68263),

Gene: Courthouse_148 Start: 78063, Stop: 78434, Start Num: 5

Candidate Starts for Courthouse_148:

(Start: 5 @78063 has 33 MA's), (Start: 14 @78189 has 2 MA's), (19, 78258), (21, 78297), (23, 78309), (30, 78393), (31, 78402),

Gene: CrystalP_121 Start: 68019, Stop: 68480, Start Num: 1

Candidate Starts for CrystalP_121:

(Start: 1 @68019 has 76 MA's), (Start: 2 @68067 has 39 MA's), (3, 68112), (Start: 6 @68151 has 1 MA's), (8, 68166), (10, 68232), (12, 68244), (20, 68328), (25, 68385), (26, 68391), (29, 68418), (33, 68457),

Gene: Czyszczone1_120 Start: 66584, Stop: 67045, Start Num: 1

Candidate Starts for Czyszczone1_120:

(Start: 1 @66584 has 76 MA's), (Start: 2 @66632 has 39 MA's), (3, 66677), (Start: 6 @66716 has 1 MA's), (8, 66731), (10, 66797), (12, 66809), (20, 66893), (25, 66950), (26, 66956), (29, 66983),

Gene: Daikon_122 Start: 67031, Stop: 67279, Start Num: 10

Candidate Starts for Daikon_122:

(Start: 1 @66818 has 76 MA's), (Start: 2 @66866 has 39 MA's), (3, 66911), (Start: 6 @66950 has 1 MA's), (8, 66965), (10, 67031), (12, 67043), (20, 67127), (25, 67184), (26, 67190), (29, 67217), (33,

67256),

Gene: Dallas_155 Start: 81712, Stop: 82083, Start Num: 5

Candidate Starts for Dallas_155:

(Start: 5 @81712 has 33 MA's), (Start: 14 @81838 has 2 MA's), (19, 81907), (27, 81997), (30, 82042), (31, 82051),

Gene: DmpstrDiver_155 Start: 81519, Stop: 81890, Start Num: 5

Candidate Starts for DmpstrDiver_155:

(Start: 5 @81519 has 33 MA's), (Start: 14 @81645 has 2 MA's), (19, 81714), (21, 81753), (23, 81765), (27, 81804), (30, 81849), (31, 81858),

Gene: DoctorDiddles_119 Start: 66478, Stop: 66939, Start Num: 1

Candidate Starts for DoctorDiddles_119:

(Start: 1 @66478 has 76 MA's), (Start: 2 @66526 has 39 MA's), (3, 66571), (Start: 6 @66610 has 1 MA's), (8, 66625), (10, 66691), (12, 66703), (20, 66787), (25, 66844), (26, 66850), (29, 66877),

Gene: Dove_149 Start: 77707, Stop: 78078, Start Num: 5

Candidate Starts for Dove_149:

(Start: 5 @77707 has 33 MA's), (Start: 14 @77833 has 2 MA's), (19, 77902), (23, 77953), (27, 77992), (30, 78037), (31, 78046),

Gene: DrDrey_124 Start: 69263, Stop: 69676, Start Num: 2

Candidate Starts for DrDrey_124:

(Start: 1 @69215 has 76 MA's), (Start: 2 @69263 has 39 MA's), (3, 69308), (Start: 6 @69347 has 1 MA's), (8, 69362), (10, 69428), (12, 69440), (20, 69524), (25, 69581), (26, 69587), (29, 69614), (33, 69653),

Gene: Duke13_152 Start: 80640, Stop: 81011, Start Num: 5

Candidate Starts for Duke13_152:

(Start: 5 @80640 has 33 MA's), (Start: 14 @80766 has 2 MA's), (19, 80835), (27, 80925), (30, 80970), (31, 80979),

Gene: Dumbo_122 Start: 67211, Stop: 67672, Start Num: 1

Candidate Starts for Dumbo_122:

(Start: 1 @67211 has 76 MA's), (Start: 2 @67259 has 39 MA's), (3, 67304), (Start: 6 @67343 has 1 MA's), (8, 67358), (10, 67424), (12, 67436), (20, 67520), (25, 67577), (26, 67583), (29, 67610), (33, 67649),

Gene: Dusk_120 Start: 67642, Stop: 68103, Start Num: 1

Candidate Starts for Dusk_120:

(Start: 1 @67642 has 76 MA's), (Start: 2 @67690 has 39 MA's), (3, 67735), (Start: 6 @67774 has 1 MA's), (8, 67789), (10, 67855), (12, 67867), (20, 67951), (25, 68008), (26, 68014), (29, 68041), (33, 68080),

Gene: Easy2Say_120 Start: 67255, Stop: 67716, Start Num: 1

Candidate Starts for Easy2Say_120:

(Start: 1 @67255 has 76 MA's), (Start: 2 @67303 has 39 MA's), (3, 67348), (Start: 6 @67387 has 1 MA's), (8, 67402), (10, 67468), (12, 67480), (20, 67564), (25, 67621), (26, 67627), (29, 67654), (33, 67693),

Gene: Ejimix_147 Start: 81780, Stop: 82151, Start Num: 5

Candidate Starts for Ejimix_147:

(Start: 5 @81780 has 33 MA's), (Start: 14 @81906 has 2 MA's), (19, 81975), (21, 82014), (23, 82026), (27, 82065), (30, 82110), (31, 82119),

Gene: Elite2014_121 Start: 67018, Stop: 67479, Start Num: 1

Candidate Starts for Elite2014_121:

(Start: 1 @67018 has 76 MA's), (Start: 2 @67066 has 39 MA's), (3, 67111), (Start: 6 @67150 has 1 MA's), (8, 67165), (10, 67231), (12, 67243), (20, 67327), (25, 67384), (26, 67390), (29, 67417), (33, 67456),

Gene: Elph10_119 Start: 66315, Stop: 66728, Start Num: 2

Candidate Starts for Elph10_119:

(Start: 1 @66267 has 76 MA's), (Start: 2 @66315 has 39 MA's), (3, 66360), (Start: 6 @66399 has 1 MA's), (8, 66414), (10, 66480), (12, 66492), (20, 66576), (25, 66633), (26, 66639), (29, 66666),

Gene: Emmina_120 Start: 66206, Stop: 66667, Start Num: 1

Candidate Starts for Emmina_120:

(Start: 1 @66206 has 76 MA's), (Start: 2 @66254 has 39 MA's), (3, 66299), (Start: 6 @66338 has 1 MA's), (8, 66353), (10, 66419), (12, 66431), (20, 66515), (25, 66572), (26, 66578), (29, 66605), (33, 66644),

Gene: EricMillard_148 Start: 81992, Stop: 82363, Start Num: 5

Candidate Starts for EricMillard_148:

(Start: 5 @81992 has 33 MA's), (Start: 14 @82118 has 2 MA's), (19, 82187), (27, 82277), (30, 82322), (31, 82331),

Gene: Eureka_120 Start: 67394, Stop: 67855, Start Num: 1

Candidate Starts for Eureka_120:

(Start: 1 @67394 has 76 MA's), (Start: 2 @67442 has 39 MA's), (3, 67487), (Start: 6 @67526 has 1 MA's), (8, 67541), (10, 67607), (12, 67619), (20, 67703), (25, 67760), (26, 67766), (29, 67793), (33, 67832),

Gene: Filch_123 Start: 67208, Stop: 67621, Start Num: 2

Candidate Starts for Filch_123:

(Start: 1 @67160 has 76 MA's), (Start: 2 @67208 has 39 MA's), (3, 67253), (Start: 6 @67292 has 1 MA's), (8, 67307), (10, 67373), (12, 67385), (20, 67469), (25, 67526), (26, 67532), (29, 67559),

Gene: FireRed_123 Start: 67718, Stop: 68131, Start Num: 2

Candidate Starts for FireRed_123:

(Start: 1 @67670 has 76 MA's), (Start: 2 @67718 has 39 MA's), (3, 67763), (Start: 6 @67802 has 1 MA's), (8, 67817), (10, 67883), (12, 67895), (20, 67979), (25, 68036), (26, 68042), (29, 68069), (33, 68108),

Gene: Flypotenuse_116 Start: 66393, Stop: 66854, Start Num: 1

Candidate Starts for Flypotenuse_116:

(Start: 1 @66393 has 76 MA's), (Start: 2 @66441 has 39 MA's), (3, 66486), (Start: 6 @66525 has 1 MA's), (8, 66540), (10, 66606), (12, 66618), (20, 66702), (25, 66759), (26, 66765), (29, 66792),

Gene: Gage_122 Start: 66926, Stop: 67387, Start Num: 1

Candidate Starts for Gage_122:

(Start: 1 @66926 has 76 MA's), (Start: 2 @66974 has 39 MA's), (3, 67019), (Start: 6 @67058 has 1 MA's), (8, 67073), (10, 67139), (12, 67151), (20, 67235), (25, 67292), (26, 67298), (29, 67325), (33, 67364),

Gene: Gaia_112 Start: 64674, Stop: 65045, Start Num: 5

Candidate Starts for Gaia_112:

(Start: 5 @64674 has 33 MA's), (13, 64794), (15, 64842), (16, 64845), (17, 64848), (18, 64860), (20, 64872), (21, 64908), (24, 64926), (29, 64983), (32, 65016), (33, 65022),

Gene: Gator_123 Start: 67837, Stop: 68250, Start Num: 2

Candidate Starts for Gator_123:

(Start: 1 @67789 has 76 MA's), (Start: 2 @67837 has 39 MA's), (3, 67882), (Start: 6 @67921 has 1 MA's), (8, 67936), (10, 68002), (12, 68014), (20, 68098), (25, 68155), (26, 68161), (29, 68188), (33, 68227),

Gene: Gemini_125 Start: 67305, Stop: 67766, Start Num: 1

Candidate Starts for Gemini_125:

(Start: 1 @67305 has 76 MA's), (Start: 2 @67353 has 39 MA's), (3, 67398), (Start: 6 @67437 has 1 MA's), (8, 67452), (10, 67518), (12, 67530), (20, 67614), (25, 67671), (26, 67677), (29, 67704), (33, 67743),

Gene: Glexan_124 Start: 67987, Stop: 68400, Start Num: 2

Candidate Starts for Glexan_124:

(Start: 1 @67939 has 76 MA's), (Start: 2 @67987 has 39 MA's), (3, 68032), (Start: 6 @68071 has 1 MA's), (8, 68086), (10, 68152), (12, 68164), (20, 68248), (25, 68305), (26, 68311), (29, 68338), (33, 68377),

Gene: Goku_120 Start: 67703, Stop: 68164, Start Num: 1

Candidate Starts for Goku_120:

(Start: 1 @67703 has 76 MA's), (Start: 2 @67751 has 39 MA's), (3, 67796), (Start: 6 @67835 has 1 MA's), (8, 67850), (10, 67916), (12, 67928), (20, 68012), (25, 68069), (26, 68075), (29, 68102), (33, 68141),

Gene: GoldenSpark_124 Start: 66788, Stop: 67249, Start Num: 1

Candidate Starts for GoldenSpark_124:

(Start: 1 @66788 has 76 MA's), (Start: 2 @66836 has 39 MA's), (3, 66881), (Start: 6 @66920 has 1 MA's), (8, 66935), (10, 67001), (12, 67013), (20, 67097), (25, 67154), (26, 67160), (29, 67187), (33, 67226),

Gene: Goldilocks_124 Start: 67384, Stop: 67845, Start Num: 1

Candidate Starts for Goldilocks_124:

(Start: 1 @67384 has 76 MA's), (Start: 2 @67432 has 39 MA's), (3, 67477), (Start: 6 @67516 has 1 MA's), (8, 67531), (10, 67597), (12, 67609), (20, 67693), (25, 67750), (26, 67756), (29, 67783), (33, 67822),

Gene: GooberAzure_122 Start: 66788, Stop: 67249, Start Num: 1

Candidate Starts for GooberAzure_122:

(Start: 1 @66788 has 76 MA's), (Start: 2 @66836 has 39 MA's), (3, 66881), (Start: 6 @66920 has 1 MA's), (8, 66935), (10, 67001), (12, 67013), (20, 67097), (25, 67154), (26, 67160), (29, 67187), (33, 67226),

Gene: Halley_156 Start: 82096, Stop: 82467, Start Num: 5

Candidate Starts for Halley_156:

(Start: 5 @82096 has 33 MA's), (Start: 14 @82222 has 2 MA's), (19, 82291), (21, 82330), (23, 82342), (27, 82381), (30, 82426), (31, 82435),

Gene: HanKaySha_120 Start: 66976, Stop: 67437, Start Num: 1

Candidate Starts for HanKaySha_120:

(Start: 1 @66976 has 76 MA's), (Start: 2 @67024 has 39 MA's), (3, 67069), (Start: 6 @67108 has 1 MA's), (8, 67123), (10, 67189), (12, 67201), (20, 67285), (25, 67342), (26, 67348), (29, 67375),

Gene: Hannaconda_147 Start: 81084, Stop: 81455, Start Num: 5

Candidate Starts for Hannaconda_147:

(Start: 5 @81084 has 33 MA's), (Start: 14 @81210 has 2 MA's), (19, 81279), (21, 81318), (23, 81330), (30, 81414), (31, 81423),

Gene: Harella_126 Start: 68503, Stop: 68916, Start Num: 2

Candidate Starts for Harella_126:

(Start: 1 @68455 has 76 MA's), (Start: 2 @68503 has 39 MA's), (3, 68548), (Start: 6 @68587 has 1 MA's), (8, 68602), (10, 68668), (12, 68680), (20, 68764), (25, 68821), (26, 68827), (29, 68854), (33, 68893),

Gene: Henry_122 Start: 67740, Stop: 68201, Start Num: 1

Candidate Starts for Henry_122:

(Start: 1 @67740 has 76 MA's), (Start: 2 @67788 has 39 MA's), (3, 67833), (Start: 6 @67872 has 1 MA's), (8, 67887), (10, 67953), (12, 67965), (20, 68049), (25, 68106), (26, 68112), (29, 68139), (33, 68178),

Gene: Highbury_116 Start: 65133, Stop: 65594, Start Num: 1

Candidate Starts for Highbury_116:

(Start: 1 @65133 has 76 MA's), (Start: 2 @65181 has 39 MA's), (3, 65226), (Start: 6 @65265 has 1 MA's), (8, 65280), (10, 65346), (12, 65358), (20, 65442), (25, 65499), (26, 65505), (29, 65532), (33, 65571),

Gene: HokkenD_149 Start: 83420, Stop: 83791, Start Num: 5

Candidate Starts for HokkenD_149:

(Start: 5 @83420 has 33 MA's), (Start: 14 @83546 has 2 MA's), (19, 83615), (21, 83654), (23, 83666), (30, 83750), (31, 83759),

Gene: Holt_126 Start: 67782, Stop: 68243, Start Num: 1

Candidate Starts for Holt_126:

(Start: 1 @67782 has 76 MA's), (Start: 2 @67830 has 39 MA's), (3, 67875), (Start: 6 @67914 has 1 MA's), (8, 67929), (10, 67995), (12, 68007), (20, 68091), (25, 68148), (26, 68154), (29, 68181), (33, 68220),

Gene: Hoonter_123 Start: 67329, Stop: 67742, Start Num: 2

Candidate Starts for Hoonter_123:

(Start: 1 @67281 has 76 MA's), (Start: 2 @67329 has 39 MA's), (3, 67374), (Start: 6 @67413 has 1 MA's), (8, 67428), (10, 67494), (12, 67506), (20, 67590), (25, 67647), (26, 67653), (29, 67680), (33, 67719),

Gene: Hohey_120 Start: 67587, Stop: 68048, Start Num: 1

Candidate Starts for Hohey_120:

(Start: 1 @67587 has 76 MA's), (Start: 2 @67635 has 39 MA's), (3, 67680), (Start: 6 @67719 has 1 MA's), (8, 67734), (10, 67800), (12, 67812), (20, 67896), (25, 67953), (26, 67959), (29, 67986), (33, 68025),

Gene: HufflyPuff_122 Start: 67896, Stop: 68357, Start Num: 1

Candidate Starts for HufflyPuff_122:

(Start: 1 @67896 has 76 MA's), (Start: 2 @67944 has 39 MA's), (3, 67989), (Start: 6 @68028 has 1 MA's), (8, 68043), (10, 68109), (12, 68121), (20, 68205), (25, 68262), (26, 68268), (29, 68295), (33, 68334),

Gene: Hughesyang_154 Start: 82455, Stop: 82826, Start Num: 5

Candidate Starts for Hughesyang_154:

(Start: 5 @82455 has 33 MA's), (Start: 14 @82581 has 2 MA's), (19, 82650), (27, 82740), (30, 82785), (31, 82794),

Gene: IHOP_123 Start: 67506, Stop: 67919, Start Num: 2

Candidate Starts for IHOP_123:

(Start: 1 @67458 has 76 MA's), (Start: 2 @67506 has 39 MA's), (3, 67551), (Start: 6 @67590 has 1 MA's), (8, 67605), (10, 67671), (12, 67683), (20, 67767), (25, 67824), (26, 67830), (29, 67857), (33, 67896),

Gene: Icee_125 Start: 67333, Stop: 67794, Start Num: 1

Candidate Starts for Icee_125:

(Start: 1 @67333 has 76 MA's), (Start: 2 @67381 has 39 MA's), (3, 67426), (Start: 6 @67465 has 1 MA's), (8, 67480), (10, 67546), (12, 67558), (20, 67642), (25, 67699), (26, 67705), (29, 67732), (33, 67771),

Gene: Inca_120 Start: 65590, Stop: 66003, Start Num: 2

Candidate Starts for Inca_120:

(Start: 1 @65542 has 76 MA's), (Start: 2 @65590 has 39 MA's), (3, 65635), (Start: 6 @65674 has 1 MA's), (8, 65689), (10, 65755), (12, 65767), (20, 65851), (25, 65908), (26, 65914), (29, 65941), (33, 65980),

Gene: JeTaime_119 Start: 67042, Stop: 67455, Start Num: 2

Candidate Starts for JeTaime_119:

(Start: 1 @66994 has 76 MA's), (Start: 2 @67042 has 39 MA's), (3, 67087), (Start: 6 @67126 has 1 MA's), (8, 67141), (10, 67207), (12, 67219), (20, 67303), (25, 67360), (26, 67366), (29, 67393), (33, 67432),

Gene: JuicyJay_149 Start: 83067, Stop: 83438, Start Num: 5

Candidate Starts for JuicyJay_149:

(Start: 5 @83067 has 33 MA's), (Start: 14 @83193 has 2 MA's), (19, 83262), (27, 83352), (30, 83397), (31, 83406),

Gene: Kalah2_146 Start: 81585, Stop: 81956, Start Num: 5

Candidate Starts for Kalah2_146:

(Start: 5 @81585 has 33 MA's), (Start: 14 @81711 has 2 MA's), (19, 81780), (27, 81870), (30, 81915), (31, 81924),

Gene: Kanye_117 Start: 67085, Stop: 67498, Start Num: 2

Candidate Starts for Kanye_117:

(Start: 1 @67037 has 76 MA's), (Start: 2 @67085 has 39 MA's), (3, 67130), (Start: 6 @67169 has 1 MA's), (8, 67184), (10, 67250), (12, 67262), (20, 67346), (25, 67403), (26, 67409), (29, 67436), (33, 67475),

Gene: KashFlow_153 Start: 81083, Stop: 81454, Start Num: 5

Candidate Starts for KashFlow_153:

(Start: 5 @81083 has 33 MA's), (Start: 14 @81209 has 2 MA's), (19, 81278), (23, 81329), (27, 81368), (30, 81413), (31, 81422), (33, 81431),

Gene: Kimchi_125 Start: 67509, Stop: 67970, Start Num: 1

Candidate Starts for Kimchi_125:

(Start: 1 @67509 has 76 MA's), (Start: 2 @67557 has 39 MA's), (3, 67602), (Start: 6 @67641 has 1 MA's), (8, 67656), (10, 67722), (12, 67734), (20, 67818), (25, 67875), (26, 67881), (29, 67908), (33, 67947),

Gene: Klein_154 Start: 81277, Stop: 81648, Start Num: 5

Candidate Starts for Klein_154:

(Start: 5 @81277 has 33 MA's), (Start: 14 @81403 has 2 MA's), (19, 81472), (27, 81562), (30, 81607), (31, 81616),

Gene: Kostya_123 Start: 67608, Stop: 68021, Start Num: 2

Candidate Starts for Kostya_123:

(Start: 1 @67560 has 76 MA's), (Start: 2 @67608 has 39 MA's), (3, 67653), (Start: 6 @67692 has 1 MA's), (8, 67707), (10, 67773), (12, 67785), (20, 67869), (25, 67926), (26, 67932), (29, 67959), (33, 67998),

Gene: Lilac_121 Start: 67730, Stop: 68191, Start Num: 1

Candidate Starts for Lilac_121:

(Start: 1 @67730 has 76 MA's), (Start: 2 @67778 has 39 MA's), (3, 67823), (Start: 6 @67862 has 1 MA's), (8, 67877), (10, 67943), (12, 67955), (20, 68039), (25, 68096), (26, 68102), (29, 68129), (33, 68168),

Gene: Lilizi_120 Start: 67016, Stop: 67477, Start Num: 1

Candidate Starts for Lilizi_120:

(Start: 1 @67016 has 76 MA's), (Start: 2 @67064 has 39 MA's), (3, 67109), (Start: 6 @67148 has 1 MA's), (8, 67163), (10, 67229), (12, 67241), (20, 67325), (25, 67382), (26, 67388), (29, 67415),

Gene: Lilpickle_121 Start: 67018, Stop: 67479, Start Num: 1

Candidate Starts for Lilpickle_121:

(Start: 1 @67018 has 76 MA's), (Start: 2 @67066 has 39 MA's), (3, 67111), (Start: 6 @67150 has 1 MA's), (8, 67165), (10, 67231), (12, 67243), (20, 67327), (25, 67384), (26, 67390), (29, 67417), (33, 67456),

Gene: LittleE_156 Start: 81999, Stop: 82385, Start Num: 4

Candidate Starts for LittleE_156:

(Start: 4 @81999 has 1 MA's), (Start: 5 @82011 has 33 MA's), (Start: 9 @82053 has 3 MA's), (11, 82113), (Start: 14 @82140 has 2 MA's), (19, 82209), (21, 82248), (23, 82260), (27, 82299), (30, 82344), (33, 82362),

Gene: Lucky2013_145 Start: 76946, Stop: 77299, Start Num: 7

Candidate Starts for Lucky2013_145:

(Start: 4 @76910 has 1 MA's), (Start: 5 @76922 has 33 MA's), (Start: 7 @76946 has 2 MA's), (Start: 14 @77054 has 2 MA's), (19, 77123), (23, 77174), (27, 77213), (28, 77228), (29, 77237), (32, 77270), (33, 77276),

Gene: MISSy_121 Start: 67713, Stop: 68174, Start Num: 1

Candidate Starts for MISSy_121:

(Start: 1 @67713 has 76 MA's), (Start: 2 @67761 has 39 MA's), (3, 67806), (Start: 6 @67845 has 1 MA's), (8, 67860), (10, 67926), (12, 67938), (20, 68022), (25, 68079), (26, 68085), (29, 68112), (33, 68151),

Gene: MPhalcon_121 Start: 67131, Stop: 67592, Start Num: 1

Candidate Starts for MPhalcon_121:

(Start: 1 @67131 has 76 MA's), (Start: 2 @67179 has 39 MA's), (3, 67224), (Start: 6 @67263 has 1 MA's), (8, 67278), (10, 67344), (12, 67356), (20, 67440), (25, 67497), (26, 67503), (29, 67530), (33, 67569),

Gene: MadamMonkfish_121 Start: 67028, Stop: 67489, Start Num: 1

Candidate Starts for MadamMonkfish_121:

(Start: 1 @67028 has 76 MA's), (Start: 2 @67076 has 39 MA's), (3, 67121), (Start: 6 @67160 has 1 MA's), (8, 67175), (10, 67241), (12, 67253), (20, 67337), (25, 67394), (26, 67400), (29, 67427), (33, 67466),

Gene: Manda_121 Start: 67216, Stop: 67629, Start Num: 2

Candidate Starts for Manda_121:

(Start: 1 @67168 has 76 MA's), (Start: 2 @67216 has 39 MA's), (3, 67261), (Start: 6 @67300 has 1 MA's), (8, 67315), (10, 67381), (12, 67393), (20, 67477), (25, 67534), (26, 67540), (29, 67567), (33, 67606),

Gene: Marshmallow_122 Start: 68147, Stop: 68608, Start Num: 1

Candidate Starts for Marshmallow_122:

(Start: 1 @68147 has 76 MA's), (Start: 2 @68195 has 39 MA's), (3, 68240), (Start: 6 @68279 has 1 MA's), (8, 68294), (10, 68360), (12, 68372), (20, 68456), (25, 68513), (26, 68519), (29, 68546), (33, 68585),

Gene: Maxxinista_122 Start: 66915, Stop: 67376, Start Num: 1

Candidate Starts for Maxxinista_122:

(Start: 1 @66915 has 76 MA's), (Start: 2 @66963 has 39 MA's), (3, 67008), (Start: 6 @67047 has 1 MA's), (8, 67062), (10, 67128), (12, 67140), (20, 67224), (25, 67281), (26, 67287), (29, 67314), (33, 67353),

Gene: MiaZeal_152 Start: 78093, Stop: 78446, Start Num: 7

Candidate Starts for MiaZeal_152:

(Start: 4 @78057 has 1 MA's), (Start: 5 @78069 has 33 MA's), (Start: 7 @78093 has 2 MA's), (Start: 14 @78201 has 2 MA's), (19, 78270), (23, 78321), (27, 78360), (28, 78375), (29, 78384), (32, 78417), (33, 78423),

Gene: Mindy_123 Start: 67306, Stop: 67767, Start Num: 1

Candidate Starts for Mindy_123:

(Start: 1 @67306 has 76 MA's), (Start: 2 @67354 has 39 MA's), (3, 67399), (Start: 6 @67438 has 1 MA's), (8, 67453), (10, 67519), (12, 67531), (20, 67615), (25, 67672), (26, 67678), (29, 67705), (33, 67744),

Gene: Minerva_154 Start: 81404, Stop: 81775, Start Num: 5

Candidate Starts for Minerva_154:

(Start: 5 @81404 has 33 MA's), (Start: 14 @81530 has 2 MA's), (19, 81599), (21, 81638), (23, 81650), (27, 81689), (30, 81734), (31, 81743),

Gene: Miniwave_114 Start: 66672, Stop: 67085, Start Num: 2

Candidate Starts for Miniwave_114:

(Start: 1 @66624 has 76 MA's), (Start: 2 @66672 has 39 MA's), (3, 66717), (Start: 6 @66756 has 1 MA's), (8, 66771), (10, 66837), (12, 66849), (20, 66933), (25, 66990), (26, 66996), (29, 67023), (33, 67062),

Gene: Misfit_121 Start: 68227, Stop: 68688, Start Num: 1

Candidate Starts for Misfit_121:

(Start: 1 @68227 has 76 MA's), (Start: 2 @68275 has 39 MA's), (3, 68320), (Start: 6 @68359 has 1 MA's), (8, 68374), (10, 68440), (12, 68452), (20, 68536), (25, 68593), (26, 68599), (29, 68626), (33, 68665),

Gene: Moldemort_122 Start: 66896, Stop: 67357, Start Num: 1

Candidate Starts for Moldemort_122:

(Start: 1 @66896 has 76 MA's), (Start: 2 @66944 has 39 MA's), (3, 66989), (Start: 6 @67028 has 1 MA's), (8, 67043), (10, 67109), (12, 67121), (20, 67205), (25, 67262), (26, 67268), (29, 67295), (33, 67334),

Gene: Mosby_117 Start: 66639, Stop: 67052, Start Num: 2

Candidate Starts for Mosby_117:

(Start: 1 @66591 has 76 MA's), (Start: 2 @66639 has 39 MA's), (3, 66684), (Start: 6 @66723 has 1 MA's), (8, 66738), (10, 66804), (12, 66816), (20, 66900), (25, 66957), (26, 66963), (29, 66990), (33, 67029),

Gene: Murica_124 Start: 68930, Stop: 69391, Start Num: 1

Candidate Starts for Murica_124:

(Start: 1 @68930 has 76 MA's), (Start: 2 @68978 has 39 MA's), (3, 69023), (Start: 6 @69062 has 1 MA's), (8, 69077), (10, 69143), (12, 69155), (20, 69239), (25, 69296), (26, 69302), (29, 69329), (33, 69368),

Gene: Murphy_119 Start: 67336, Stop: 67749, Start Num: 2

Candidate Starts for Murphy_119:

(Start: 1 @67288 has 76 MA's), (Start: 2 @67336 has 39 MA's), (3, 67381), (Start: 6 @67420 has 1 MA's), (8, 67435), (10, 67501), (12, 67513), (20, 67597), (25, 67654), (26, 67660), (29, 67687), (33, 67726),

Gene: Myrale_121 Start: 67803, Stop: 68264, Start Num: 1

Candidate Starts for Myrale_121:

(Start: 1 @67803 has 76 MA's), (Start: 2 @67851 has 39 MA's), (3, 67896), (Start: 6 @67935 has 1 MA's), (8, 67950), (10, 68016), (12, 68028), (20, 68112), (25, 68169), (26, 68175), (29, 68202), (33, 68241),

Gene: Nala_122 Start: 67640, Stop: 68101, Start Num: 1

Candidate Starts for Nala_122:

(Start: 1 @67640 has 76 MA's), (Start: 2 @67688 has 39 MA's), (3, 67733), (Start: 6 @67772 has 1 MA's), (8, 67787), (10, 67853), (12, 67865), (20, 67949), (25, 68006), (26, 68012), (29, 68039),

Gene: Nebkiss_113 Start: 63600, Stop: 63971, Start Num: 5

Candidate Starts for Nebkiss_113:

(Start: 5 @63600 has 33 MA's), (13, 63720), (15, 63768), (16, 63771), (17, 63774), (18, 63786), (20, 63798), (21, 63834), (24, 63852), (29, 63909), (32, 63942), (33, 63948),

Gene: NelitzaMV_117 Start: 65661, Stop: 66074, Start Num: 2

Candidate Starts for NelitzaMV_117:

(Start: 1 @65613 has 76 MA's), (Start: 2 @65661 has 39 MA's), (3, 65706), (Start: 6 @65745 has 1 MA's), (8, 65760), (10, 65826), (12, 65838), (20, 65922), (25, 65979), (26, 65985), (29, 66012), (33, 66051),

Gene: NihilNomen_156 Start: 81193, Stop: 81564, Start Num: 5

Candidate Starts for NihilNomen_156:

(Start: 5 @81193 has 33 MA's), (Start: 14 @81319 has 2 MA's), (19, 81388), (27, 81478), (30, 81523), (31, 81532),

Gene: Nimrod_121 Start: 67902, Stop: 68315, Start Num: 2

Candidate Starts for Nimrod_121:

(Start: 1 @67854 has 76 MA's), (Start: 2 @67902 has 39 MA's), (3, 67947), (Start: 6 @67986 has 1 MA's), (8, 68001), (10, 68067), (12, 68079), (20, 68163), (25, 68220), (26, 68226), (29, 68253), (33, 68292),

Gene: NoSleep_120 Start: 66448, Stop: 66909, Start Num: 1

Candidate Starts for NoSleep_120:

(Start: 1 @66448 has 76 MA's), (Start: 2 @66496 has 39 MA's), (3, 66541), (Start: 6 @66580 has 1 MA's), (8, 66595), (10, 66661), (12, 66673), (20, 66757), (25, 66814), (26, 66820), (29, 66847), (33, 66886),

Gene: Odette_159 Start: 83684, Stop: 84055, Start Num: 5

Candidate Starts for Odette_159:

(Start: 5 @83684 has 33 MA's), (Start: 14 @83810 has 2 MA's), (19, 83879), (23, 83930), (27, 83969), (30, 84014), (31, 84023), (33, 84032),

Gene: Omega_160 Start: 83217, Stop: 83549, Start Num: 9

Candidate Starts for Omega_160:

(Start: 4 @83163 has 1 MA's), (Start: 5 @83175 has 33 MA's), (Start: 9 @83217 has 3 MA's), (11, 83277), (Start: 14 @83304 has 2 MA's), (19, 83373), (21, 83412), (23, 83424), (27, 83463), (30, 83508), (33, 83526),

Gene: Optimus_147 Start: 80726, Stop: 81058, Start Num: 9

Candidate Starts for Optimus_147:

(Start: 4 @80672 has 1 MA's), (Start: 5 @80684 has 33 MA's), (Start: 9 @80726 has 3 MA's), (11, 80786), (Start: 14 @80813 has 2 MA's), (19, 80882), (21, 80921), (23, 80933), (27, 80972), (30, 81017), (33, 81035),

Gene: OrionPax_117 Start: 66521, Stop: 66982, Start Num: 1

Candidate Starts for OrionPax_117:

(Start: 1 @66521 has 76 MA's), (Start: 2 @66569 has 39 MA's), (3, 66614), (Start: 6 @66653 has 1 MA's), (8, 66668), (10, 66734), (12, 66746), (20, 66830), (25, 66887), (26, 66893), (29, 66920), (33, 66959),

Gene: Paperbeatsrock_119 Start: 67302, Stop: 67763, Start Num: 1

Candidate Starts for Paperbeatsrock_119:

(Start: 1 @67302 has 76 MA's), (Start: 2 @67350 has 39 MA's), (3, 67395), (Start: 6 @67434 has 1 MA's), (8, 67449), (10, 67515), (12, 67527), (20, 67611), (25, 67668), (26, 67674), (29, 67701), (33, 67740),

Gene: Pat3_120 Start: 66800, Stop: 67261, Start Num: 1

Candidate Starts for Pat3_120:

(Start: 1 @66800 has 76 MA's), (Start: 2 @66848 has 39 MA's), (3, 66893), (Start: 6 @66932 has 1 MA's), (8, 66947), (10, 67013), (12, 67025), (20, 67109), (26, 67172), (29, 67199), (33, 67238),

Gene: Petra64142_123 Start: 67770, Stop: 68231, Start Num: 1

Candidate Starts for Petra64142_123:

(Start: 1 @67770 has 76 MA's), (Start: 2 @67818 has 39 MA's), (3, 67863), (Start: 6 @67902 has 1 MA's), (8, 67917), (10, 67983), (12, 67995), (20, 68079), (25, 68136), (26, 68142), (29, 68169), (33, 68208),

Gene: Phaja_123 Start: 67511, Stop: 67924, Start Num: 2

Candidate Starts for Phaja_123:

(Start: 1 @67463 has 76 MA's), (Start: 2 @67511 has 39 MA's), (3, 67556), (Start: 6 @67595 has 1 MA's), (8, 67610), (10, 67676), (12, 67688), (20, 67772), (25, 67829), (26, 67835), (29, 67862), (33, 67901),

Gene: Pharsalus_119 Start: 67442, Stop: 67903, Start Num: 1

Candidate Starts for Pharsalus_119:

(Start: 1 @67442 has 76 MA's), (Start: 2 @67490 has 39 MA's), (3, 67535), (Start: 6 @67574 has 1 MA's), (8, 67589), (10, 67655), (12, 67667), (20, 67751), (25, 67808), (26, 67814), (29, 67841), (33, 67880),

Gene: PhatBacter_123 Start: 67670, Stop: 68131, Start Num: 1

Candidate Starts for PhatBacter_123:

(Start: 1 @67670 has 76 MA's), (Start: 2 @67718 has 39 MA's), (3, 67763), (Start: 6 @67802 has 1 MA's), (8, 67817), (10, 67883), (12, 67895), (20, 67979), (25, 68036), (26, 68042), (29, 68069), (33, 68108),

Gene: Phaux_122 Start: 68230, Stop: 68691, Start Num: 1

Candidate Starts for Phaux_122:

(Start: 1 @68230 has 76 MA's), (Start: 2 @68278 has 39 MA's), (3, 68323), (Start: 6 @68362 has 1 MA's), (8, 68377), (10, 68443), (12, 68455), (20, 68539), (25, 68596), (26, 68602), (29, 68629), (33, 68668),

Gene: Phoebus_155 Start: 83809, Stop: 84180, Start Num: 5

Candidate Starts for Phoebus_155:

(Start: 5 @83809 has 33 MA's), (Start: 14 @83935 has 2 MA's), (19, 84004), (27, 84094), (30, 84139), (31, 84148),

Gene: Phrux_116 Start: 66356, Stop: 66769, Start Num: 2

Candidate Starts for Phrux_116:

(Start: 1 @66308 has 76 MA's), (Start: 2 @66356 has 39 MA's), (3, 66401), (Start: 6 @66440 has 1 MA's), (8, 66455), (10, 66521), (12, 66533), (20, 66617), (25, 66674), (26, 66680), (29, 66707),

Gene: Porcelain_149 Start: 77868, Stop: 78245, Start Num: 5

Candidate Starts for Porcelain_149:

(Start: 4 @77856 has 1 MA's), (Start: 5 @77868 has 33 MA's), (Start: 7 @77892 has 2 MA's), (Start: 14 @78000 has 2 MA's), (19, 78069), (23, 78120), (27, 78159), (28, 78174), (29, 78183), (32, 78216), (33, 78222),

Gene: Porky_120 Start: 67222, Stop: 67683, Start Num: 1

Candidate Starts for Porky_120:

(Start: 1 @67222 has 76 MA's), (Start: 2 @67270 has 39 MA's), (3, 67315), (Start: 6 @67354 has 1 MA's), (8, 67369), (10, 67435), (12, 67447), (20, 67531), (25, 67588), (26, 67594), (29, 67621), (33, 67660),

Gene: Pound_146 Start: 80927, Stop: 81298, Start Num: 5

Candidate Starts for Pound_146:

(Start: 5 @80927 has 33 MA's), (Start: 14 @81053 has 2 MA's), (19, 81122), (23, 81173), (27, 81212), (30, 81257), (31, 81266),

Gene: Pumpkin_121 Start: 66696, Stop: 67109, Start Num: 2

Candidate Starts for Pumpkin_121:

(Start: 1 @66648 has 76 MA's), (Start: 2 @66696 has 39 MA's), (3, 66741), (Start: 6 @66780 has 1 MA's), (8, 66795), (10, 66861), (12, 66873), (20, 66957), (25, 67014), (26, 67020), (29, 67047), (33, 67086),

Gene: Quallification_121 Start: 67716, Stop: 68177, Start Num: 1

Candidate Starts for Quallification_121:

(Start: 1 @67716 has 76 MA's), (Start: 2 @67764 has 39 MA's), (3, 67809), (Start: 6 @67848 has 1 MA's), (8, 67863), (10, 67929), (12, 67941), (20, 68025), (25, 68082), (26, 68088), (29, 68115), (33, 68154),

Gene: Rakim_122 Start: 67136, Stop: 67597, Start Num: 1

Candidate Starts for Rakim_122:

(Start: 1 @67136 has 76 MA's), (Start: 2 @67184 has 39 MA's), (3, 67229), (Start: 6 @67268 has 1 MA's), (8, 67283), (10, 67349), (12, 67361), (20, 67445), (25, 67502), (26, 67508), (29, 67535), (33, 67574),

Gene: Redno2_148 Start: 78993, Stop: 79364, Start Num: 5

Candidate Starts for Redno2_148:

(Start: 5 @78993 has 33 MA's), (Start: 14 @79119 has 2 MA's), (19, 79188), (27, 79278), (30, 79323), (31, 79332),

Gene: Rimmer_118 Start: 67155, Stop: 67568, Start Num: 2

Candidate Starts for Rimmer_118:

(Start: 1 @67107 has 76 MA's), (Start: 2 @67155 has 39 MA's), (3, 67200), (Start: 6 @67239 has 1 MA's), (8, 67254), (10, 67320), (12, 67332), (20, 67416), (25, 67473), (26, 67479), (29, 67506), (33, 67545),

Gene: RiverMonster_119 Start: 67203, Stop: 67664, Start Num: 1

Candidate Starts for RiverMonster_119:

(Start: 1 @67203 has 76 MA's), (Start: 2 @67251 has 39 MA's), (3, 67296), (Start: 6 @67335 has 1 MA's), (8, 67350), (10, 67416), (12, 67428), (20, 67512), (25, 67569), (26, 67575), (29, 67602), (33, 67641),

Gene: Saints25_116 Start: 65133, Stop: 65594, Start Num: 1

Candidate Starts for Saints25_116:

(Start: 1 @65133 has 76 MA's), (Start: 2 @65181 has 39 MA's), (3, 65226), (Start: 6 @65265 has 1 MA's), (8, 65280), (10, 65346), (12, 65358), (20, 65442), (25, 65499), (26, 65505), (29, 65532), (33, 65571),

Gene: Sassay_115 Start: 65553, Stop: 66014, Start Num: 1

Candidate Starts for Sassay_115:

(Start: 1 @65553 has 76 MA's), (Start: 2 @65601 has 39 MA's), (3, 65646), (Start: 6 @65685 has 1 MA's), (8, 65700), (10, 65766), (12, 65778), (20, 65862), (25, 65919), (26, 65925), (29, 65952), (33, 65991),

Gene: Schatzie_150 Start: 81776, Stop: 82147, Start Num: 5

Candidate Starts for Schatzie_150:

(Start: 5 @81776 has 33 MA's), (Start: 14 @81902 has 2 MA's), (19, 81971), (23, 82022), (27, 82061), (30, 82106), (31, 82115),

Gene: ShamWow_121 Start: 68067, Stop: 68480, Start Num: 2

Candidate Starts for ShamWow_121:

(Start: 1 @68019 has 76 MA's), (Start: 2 @68067 has 39 MA's), (3, 68112), (Start: 6 @68151 has 1 MA's), (8, 68166), (10, 68232), (12, 68244), (20, 68328), (25, 68385), (26, 68391), (29, 68418), (33, 68457),

Gene: ShereKhan_118 Start: 68010, Stop: 68423, Start Num: 2

Candidate Starts for ShereKhan_118:

(Start: 1 @67962 has 76 MA's), (Start: 2 @68010 has 39 MA's), (3, 68055), (Start: 6 @68094 has 1 MA's), (8, 68109), (10, 68175), (12, 68187), (20, 68271), (25, 68328), (26, 68334), (29, 68361), (33, 68400),

Gene: Simpliphy_118 Start: 66774, Stop: 67235, Start Num: 1

Candidate Starts for Simpliphy_118:

(Start: 1 @66774 has 76 MA's), (Start: 2 @66822 has 39 MA's), (3, 66867), (Start: 6 @66906 has 1 MA's), (8, 66921), (10, 66987), (12, 66999), (20, 67083), (25, 67140), (26, 67146), (29, 67173), (33, 67212),

Gene: SirDuracell_125 Start: 67526, Stop: 67855, Start Num: 6

Candidate Starts for SirDuracell_125:

(Start: 1 @67394 has 76 MA's), (Start: 2 @67442 has 39 MA's), (3, 67487), (Start: 6 @67526 has 1 MA's), (8, 67541), (10, 67607), (12, 67619), (20, 67703), (25, 67760), (26, 67766), (29, 67793), (33, 67832),

Gene: SophKB_119 Start: 67184, Stop: 67645, Start Num: 1

Candidate Starts for SophKB_119:

(Start: 1 @67184 has 76 MA's), (Start: 2 @67232 has 39 MA's), (3, 67277), (Start: 6 @67316 has 1 MA's), (8, 67331), (10, 67397), (12, 67409), (20, 67493), (25, 67550), (26, 67556), (29, 67583), (33, 67622),

Gene: Sotrice96_125 Start: 68134, Stop: 68547, Start Num: 2

Candidate Starts for Sotrice96_125:

(Start: 1 @68086 has 76 MA's), (Start: 2 @68134 has 39 MA's), (3, 68179), (Start: 6 @68218 has 1 MA's), (8, 68233), (10, 68299), (12, 68311), (20, 68395), (25, 68452), (26, 68458), (29, 68485), (33, 68524),

Gene: Squint_145 Start: 77872, Stop: 78243, Start Num: 5

Candidate Starts for Squint_145:

(Start: 5 @77872 has 33 MA's), (Start: 14 @77998 has 2 MA's), (19, 78067), (21, 78106), (23, 78118), (30, 78202), (31, 78211),

Gene: Stank_123 Start: 67581, Stop: 68042, Start Num: 1

Candidate Starts for Stank_123:

(Start: 1 @67581 has 76 MA's), (Start: 2 @67629 has 39 MA's), (3, 67674), (Start: 6 @67713 has 1 MA's), (8, 67728), (10, 67794), (12, 67806), (20, 67890), (25, 67947), (26, 67953), (29, 67980), (33, 68019),

Gene: Stark_119 Start: 67087, Stop: 67548, Start Num: 1

Candidate Starts for Stark_119:

(Start: 1 @67087 has 76 MA's), (Start: 2 @67135 has 39 MA's), (3, 67180), (Start: 6 @67219 has 1 MA's), (8, 67234), (10, 67300), (12, 67312), (20, 67396), (25, 67453), (26, 67459), (29, 67486),

Gene: StellaBean_117 Start: 67384, Stop: 67845, Start Num: 1

Candidate Starts for StellaBean_117:

(Start: 1 @67384 has 76 MA's), (Start: 2 @67432 has 39 MA's), (3, 67477), (Start: 6 @67516 has 1 MA's), (8, 67531), (10, 67597), (12, 67609), (20, 67693), (22, 67732), (25, 67750), (26, 67756), (29, 67783), (33, 67822),

Gene: StolenFromERC_122 Start: 66974, Stop: 67387, Start Num: 2

Candidate Starts for StolenFromERC_122:

(Start: 1 @66926 has 76 MA's), (Start: 2 @66974 has 39 MA's), (3, 67019), (Start: 6 @67058 has 1 MA's), (8, 67073), (10, 67139), (12, 67151), (20, 67235), (25, 67292), (26, 67298), (29, 67325), (33, 67364),

Gene: Superphikiman_150 Start: 78471, Stop: 78716, Start Num: 14

Candidate Starts for Superphikiman_150:

(Start: 5 @78345 has 33 MA's), (Start: 14 @78471 has 2 MA's), (19, 78540), (21, 78579), (23, 78591), (30, 78675), (31, 78684),

Gene: TBrady12_124 Start: 67066, Stop: 67479, Start Num: 2

Candidate Starts for TBrady12_124:

(Start: 1 @67018 has 76 MA's), (Start: 2 @67066 has 39 MA's), (3, 67111), (Start: 6 @67150 has 1 MA's), (8, 67165), (10, 67231), (12, 67243), (20, 67327), (25, 67384), (26, 67390), (29, 67417), (33, 67456),

Gene: Tarkin_119 Start: 67827, Stop: 68288, Start Num: 1

Candidate Starts for Tarkin_119:

(Start: 1 @67827 has 76 MA's), (Start: 2 @67875 has 39 MA's), (3, 67920), (Start: 6 @67959 has 1 MA's), (8, 67974), (10, 68040), (12, 68052), (20, 68136), (25, 68193), (26, 68199), (29, 68226), (33, 68265),

Gene: TeardropMSU_120 Start: 67188, Stop: 67649, Start Num: 1

Candidate Starts for TeardropMSU_120:

(Start: 1 @67188 has 76 MA's), (Start: 2 @67236 has 39 MA's), (3, 67281), (Start: 6 @67320 has 1 MA's), (8, 67335), (10, 67401), (12, 67413), (20, 67497), (25, 67554), (26, 67560), (29, 67587), (33, 67626),

Gene: Teaspoon_116 Start: 67566, Stop: 68027, Start Num: 1

Candidate Starts for Teaspoon_116:

(Start: 1 @67566 has 76 MA's), (Start: 2 @67614 has 39 MA's), (3, 67659), (Start: 6 @67698 has 1 MA's), (8, 67713), (10, 67779), (12, 67791), (20, 67875), (25, 67932), (26, 67938), (29, 67965), (33, 68004),

Gene: Terminus_123 Start: 68227, Stop: 68688, Start Num: 1

Candidate Starts for Terminus_123:

(Start: 1 @68227 has 76 MA's), (Start: 2 @68275 has 39 MA's), (3, 68320), (Start: 6 @68359 has 1 MA's), (8, 68374), (10, 68440), (12, 68452), (20, 68536), (25, 68593), (26, 68599), (29, 68626), (33, 68665),

Gene: Thibault_137 Start: 78442, Stop: 78813, Start Num: 5

Candidate Starts for Thibault_137:

(Start: 5 @78442 has 33 MA's), (Start: 14 @78568 has 2 MA's), (19, 78637), (23, 78688), (27, 78727), (30, 78772), (31, 78781), (33, 78790),

Gene: ThreeRngTarjay_150 Start: 82400, Stop: 82771, Start Num: 5

Candidate Starts for ThreeRngTarjay_150:

(Start: 5 @82400 has 33 MA's), (Start: 14 @82526 has 2 MA's), (19, 82595), (27, 82685), (30, 82730), (31, 82739),

Gene: Thresher_121 Start: 67867, Stop: 68328, Start Num: 1

Candidate Starts for Thresher_121:

(Start: 1 @67867 has 76 MA's), (Start: 2 @67915 has 39 MA's), (3, 67960), (Start: 6 @67999 has 1 MA's), (8, 68014), (10, 68080), (12, 68092), (20, 68176), (25, 68233), (26, 68239), (29, 68266),

Gene: Tomaszewski_115 Start: 66813, Stop: 67226, Start Num: 2

Candidate Starts for Tomaszewski_115:

(Start: 1 @66765 has 76 MA's), (Start: 2 @66813 has 39 MA's), (3, 66858), (Start: 6 @66897 has 1 MA's), (8, 66912), (10, 66978), (12, 66990), (20, 67074), (25, 67131), (26, 67137), (29, 67164), (33, 67203),

Gene: Toto_119 Start: 68019, Stop: 68480, Start Num: 1

Candidate Starts for Toto_119:

(Start: 1 @68019 has 76 MA's), (Start: 2 @68067 has 39 MA's), (3, 68112), (Start: 6 @68151 has 1 MA's), (8, 68166), (10, 68232), (12, 68244), (20, 68328), (25, 68385), (26, 68391), (29, 68418), (33, 68457),

Gene: Traaww1_117 Start: 66568, Stop: 67029, Start Num: 1

Candidate Starts for Traaww1_117:

(Start: 1 @66568 has 76 MA's), (Start: 2 @66616 has 39 MA's), (3, 66661), (Start: 6 @66700 has 1 MA's), (8, 66715), (10, 66781), (12, 66793), (20, 66877), (25, 66934), (26, 66940), (29, 66967),

Gene: Tuco_125 Start: 69247, Stop: 69708, Start Num: 1

Candidate Starts for Tuco_125:

(Start: 1 @69247 has 76 MA's), (Start: 2 @69295 has 39 MA's), (3, 69340), (Start: 6 @69379 has 1 MA's), (8, 69394), (10, 69460), (12, 69472), (20, 69556), (25, 69613), (26, 69619), (29, 69646), (33, 69685),

Gene: Ukulele_115 Start: 66632, Stop: 67045, Start Num: 2

Candidate Starts for Ukulele_115:

(Start: 1 @66584 has 76 MA's), (Start: 2 @66632 has 39 MA's), (3, 66677), (Start: 6 @66716 has 1 MA's), (8, 66731), (10, 66797), (12, 66809), (20, 66893), (25, 66950), (26, 66956), (29, 66983), (33, 67022),

Gene: Wanda_154 Start: 79875, Stop: 80246, Start Num: 5

Candidate Starts for Wanda_154:

(Start: 5 @79875 has 33 MA's), (Start: 14 @80001 has 2 MA's), (19, 80070), (21, 80109), (23, 80121), (27, 80160), (30, 80205), (31, 80214),

Gene: Wiggin_123 Start: 67011, Stop: 67472, Start Num: 1

Candidate Starts for Wiggin_123:

(Start: 1 @67011 has 76 MA's), (Start: 2 @67059 has 39 MA's), (3, 67104), (Start: 6 @67143 has 1 MA's), (8, 67158), (10, 67224), (12, 67236), (20, 67320), (25, 67377), (26, 67383), (29, 67410), (33, 67449),

Gene: Willez_116 Start: 65648, Stop: 66109, Start Num: 1

Candidate Starts for Willez_116:

(Start: 1 @65648 has 76 MA's), (Start: 2 @65696 has 39 MA's), (3, 65741), (Start: 6 @65780 has 1 MA's), (8, 65795), (10, 65861), (12, 65873), (20, 65957), (25, 66014), (26, 66020), (29, 66047), (33, 66086),

Gene: Xandras_118 Start: 66834, Stop: 67295, Start Num: 1

Candidate Starts for Xandras_118:

(Start: 1 @66834 has 76 MA's), (Start: 2 @66882 has 39 MA's), (3, 66927), (Start: 6 @66966 has 1 MA's), (8, 66981), (10, 67047), (12, 67059), (20, 67143), (25, 67200), (26, 67206), (29, 67233), (33, 67272),

Gene: YassJohnny_117 Start: 65574, Stop: 66035, Start Num: 1

Candidate Starts for YassJohnny_117:

(Start: 1 @65574 has 76 MA's), (Start: 2 @65622 has 39 MA's), (3, 65667), (Start: 6 @65706 has 1 MA's), (8, 65721), (10, 65787), (12, 65799), (20, 65883), (25, 65940), (26, 65946), (29, 65973), (33, 66012),

Gene: Yeet_147 Start: 80937, Stop: 81308, Start Num: 5

Candidate Starts for Yeet_147:

(Start: 5 @80937 has 33 MA's), (Start: 14 @81063 has 2 MA's), (19, 81132), (27, 81222), (30, 81267), (31, 81276),

Gene: Youngblood_124 Start: 67723, Stop: 68184, Start Num: 1

Candidate Starts for Youngblood_124:

(Start: 1 @67723 has 76 MA's), (Start: 2 @67771 has 39 MA's), (3, 67816), (Start: 6 @67855 has 1 MA's), (8, 67870), (10, 67936), (12, 67948), (20, 68032), (25, 68089), (26, 68095), (29, 68122), (33, 68161),

Gene: Zelink_149 Start: 82717, Stop: 83088, Start Num: 5

Candidate Starts for Zelink_149:

(Start: 5 @82717 has 33 MA's), (Start: 14 @82843 has 2 MA's), (19, 82912), (27, 83002), (30, 83047), (31, 83056),

Gene: xkcd_124 Start: 67908, Stop: 68369, Start Num: 1

Candidate Starts for xkcd_124:

(Start: 1 @67908 has 76 MA's), (Start: 2 @67956 has 39 MA's), (3, 68001), (Start: 6 @68040 has 1 MA's), (8, 68055), (10, 68121), (12, 68133), (20, 68217), (25, 68274), (26, 68280), (29, 68307), (33, 68346),