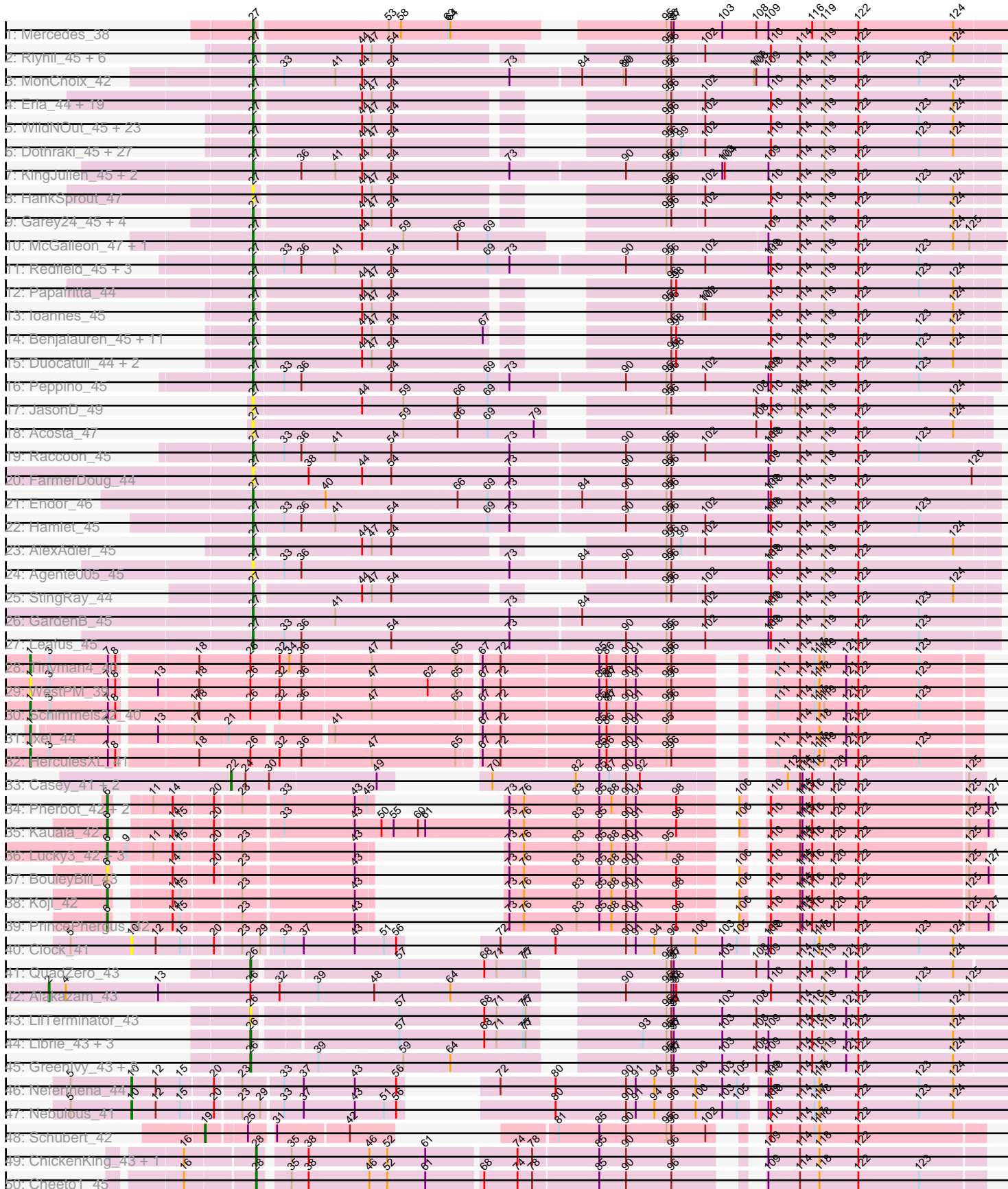


Pham 157638



Note: Tracks are now grouped by subcluster and scaled. Switching in subcluster is indicated by changes in track color. Track scale is now set by default to display the region 30 bp upstream of start 1 to 30 bp downstream of the last possible start. If this default region is judged to be packed too tightly with annotated starts, the track will be further scaled to only show that region of the ORF with annotated starts. This action will be indicated by adding "Zoomed" to the title. For starts, yellow indicates the location of called starts comprised solely of Glimmer/GeneMark auto-annotations, green indicates the location of called starts with at least 1 manual gene annotation.

Pham 157638 Report

This analysis was run 04/13/24 on database version 558.

Pham number 157638 has 161 members, 26 are drafts.

Phages represented in each track:

- Track 1 : Mercedes_38
- Track 2 : Riyhil_45, Renzie_45, Dave_45, Robinson_45, Peep_45, Superfresh_45, Antoinette_45
- Track 3 : MonChoix_42
- Track 4 : Erla_44, Raptor_45, Kale_44, ManRay_44, Winzigespinne_44, Espinosa_44, Baines_44, Pocket_44, Bonino_44, Klimt_45, Chamuel_44, SonOfLevi_45, Aubergine_44, Calix_44, Etta_44, Gelo_44, Oats_44, Tenda_44, Christoph_44, Gubbabump_44
- Track 5 : WildNOOut_45, BigRedClifford_45, BonesMcCoy_45, Ludgate_45, Greys_45, Thorongil_45, Strathdee_45, Vispistious_46, Thompsone_45, Oxtober96_46, Convict_45, Blage_45, Alyxandracam_45, Velene_45, Teagan_45, Figueroism_45, Gargoyle_45, PuppyEggo_45, Janus167_44, Knox_45, Lovelyunicorn_45, Den3_45, ShaiHulud_46, AxiPup_45
- Track 6 : Dothraki_45, NickSell_47, Martin_46, Kurt1_45, Bandik_45, TatarkaPM_45, SJay_45, BeautPeep30_45, Phireproof_45, SoilGremlin_46, Inventa_45, ParleG_45, OldNelly_46, MillyPhilly_45, Delphidian_47, Zada_46, Phiderman_47, MrWorldwide_45, Nagem_45, Stanktossa_45, Phriends_45, Byron23_46, Pherferi_45, Rapheph_45, Shee_45, PhredFlintston_45, MaeLinda_45, TinSulphur_46
- Track 7 : KingJulien_45, Etna_45, Stormbreaker8_44
- Track 8 : HankSprout_47
- Track 9 : Garey24_45, Asta_47, Nattles_44, Gershwin_44, TeddyBear_44
- Track 10 : McGalleon_47, Jenos_48
- Track 11 : Redfield_45, Balsa_44, BeeBee8_46, Schnapsidee_45
- Track 12 : Papafritta_44
- Track 13 : Ioannes_45
- Track 14 : Benjalauren_45, Rog141_46, HanSolo_44, AranulaLuti_44, Ilzat_44, KannH_44, JeriBeth_46, Clancy_44, HungryHenry_46, Sedgewig_44, Jerbirus_46, StirfryIV_46
- Track 15 : Duocatuli_44, Chako_44, JasperRussell_44
- Track 16 : Peppino_45
- Track 17 : JasonD_49
- Track 18 : Acosta_47
- Track 19 : Raccoon_45
- Track 20 : FarmerDoug_44
- Track 21 : Endor_46
- Track 22 : Hamlet_45

- Track 23 : AlexAdler_45
- Track 24 : Agente005_45
- Track 25 : StingRay_44
- Track 26 : GardenB_45
- Track 27 : Leafus_45
- Track 28 : Tinyman4_40
- Track 29 : WestPM_39
- Track 30 : Schimmels22_40
- Track 31 : Ixel_44
- Track 32 : HerculesXL_41
- Track 33 : Casey_41, Pajaza_41, Pikmin_41
- Track 34 : Pherbot_42, Bustleton_42, Sinatra_43
- Track 35 : Kauala_42
- Track 36 : Lucky3_42, SirVictor_43, Golden_42, Guetzie_43
- Track 37 : BouleyBill_43
- Track 38 : Koji_42
- Track 39 : PrincePhergus_42
- Track 40 : Clock_41
- Track 41 : QuadZero_43
- Track 42 : Alakazam_43
- Track 43 : LilTerminator_43
- Track 44 : Librie_43, Hasitha_43, Fulton_43, CaptainRex_43
- Track 45 : GreenIvy_43, Zayuliv_43, Zepp_43
- Track 46 : Neferthena_44
- Track 47 : Nebulous_41
- Track 48 : Schubert_42
- Track 49 : ChickenKing_43, GaeCeo_45
- Track 50 : Cheeto1_45

Summary of Final Annotations (See graph section above for start numbers):

The start number called the most often in the published annotations is 27, it was called in 105 of the 135 non-draft genes in the pham.

Genes that call this "Most Annotated" start:

- Acosta_47, Agente005_45, AlexAdler_45, Alyxandracam_45, Antoinette_45, AranulaLuti_44, Asta_47, Aubergine_44, AxiPup_45, Baines_44, Balsa_44, Bandik_45, BeautPeep30_45, BeeBee8_46, Benjalauren_45, BigRedClifford_45, Blage_45, BonesMcCoy_45, Bonino_44, Byron23_46, Calix_44, Chako_44, Chamuel_44, Christoph_44, Clancy_44, Convict_45, Dave_45, Delphidian_47, Den3_45, Dothraki_45, Duocatuli_44, Endor_46, Erla_44, Espinosa_44, Etna_45, Etta_44, FarmerDoug_44, Figueroism_45, GardenB_45, Garey24_45, Gargoyle_45, Gelo_44, Gershwin_44, Greys_45, Gubbabump_44, Hamlet_45, HanSolo_44, HankSprout_47, HungryHenry_46, Ilzat_44, Inventa_45, Ioannes_45, Janus167_44, JasonD_49, JasperRussell_44, Jenos_48, Jerbirus_46, JeriBeth_46, Kale_44, KannH_44, KingJulien_45, Klimt_45, Knox_45, Kurt1_45, Leafus_45, Lovelyunicorn_45, Ludgate_45, MaeLinda_45, ManRay_44, Martin_46, McGalleon_47, Mercedes_38, MillyPhilly_45, MonChoix_42, MrWorldwide_45, Nagem_45, Nattles_44, NickSell_47, Oats_44, OldNelly_46, Oxtober96_46, Papafritta_44, ParleG_45, Peep_45, Peppino_45, Pherferi_45, Phiderman_47,

Phireproof_45, PhredFlintston_45, Phriends_45, Pocket_44, PuppyEggo_45, Raccoon_45, Rapheph_45, Raptor_45, Redfield_45, Renzie_45, Rihhil_45, Robinson_45, Rog141_46, SJay_45, Schnapsidee_45, Sedgewig_44, ShaiHulud_46, Shee_45, SoilGremlin_46, SonOfLevi_45, Stanktossa_45, StingRay_44, StirfryIV_46, Stormbreaker8_44, Strathdee_45, Superfresh_45, TatarkaPM_45, Teagan_45, TeddyBear_44, Tenda_44, Thompsone_45, Thorongil_45, TinSulphur_46, Velene_45, Vispistious_46, WildNOut_45, Winzigespinne_44, Zada_46,

Genes that have the "Most Annotated" start but do not call it:

-

Genes that do not have the "Most Annotated" start:

- Alakazam_43, BouleyBill_43, Bustleton_42, CaptainRex_43, Casey_41, Cheeto1_45, ChickenKing_43, Clock_41, Fulton_43, GaeCeo_45, Golden_42, Greenlvy_43, Guetzie_43, Hasitha_43, HerculesXL_41, Ixel_44, Kauala_42, Koji_42, Librie_43, LiTerminator_43, Lucky3_42, Nebulous_41, Neferthena_44, Pajaza_41, Pherbot_42, Pikmin_41, PrincePhergus_42, QuadZero_43, Schimmels22_40, Schubert_42, Sinatra_43, SirVictor_43, Tinyman4_40, WestPM_39, Zayuliv_43, Zepp_43,

Summary by start number:

Start 1:

- Found in 5 of 161 (3.1%) of genes in pham
- Manual Annotations of this start: 4 of 135
- Called 100.0% of time when present
- Phage (with cluster) where this start called: HerculesXL_41 (EA11), Ixel_44 (EA11), Schimmels22_40 (EA11), Tinyman4_40 (EA11), WestPM_39 (EA11),

Start 2:

- Found in 1 of 161 (0.6%) of genes in pham
- Manual Annotations of this start: 1 of 135
- Called 100.0% of time when present
- Phage (with cluster) where this start called: Alakazam_43 (EA5),

Start 6:

- Found in 11 of 161 (6.8%) of genes in pham
- Manual Annotations of this start: 10 of 135
- Called 100.0% of time when present
- Phage (with cluster) where this start called: BouleyBill_43 (EA4), Bustleton_42 (EA4), Golden_42 (EA4), Guetzie_43 (EA4), Kauala_42 (EA4), Koji_42 (EA4), Lucky3_42 (EA4), Pherbot_42 (EA4), PrincePhergus_42 (EA4), Sinatra_43 (EA4), SirVictor_43 (EA4),

Start 10:

- Found in 3 of 161 (1.9%) of genes in pham
- Manual Annotations of this start: 2 of 135
- Called 100.0% of time when present
- Phage (with cluster) where this start called: Clock_41 (EA5), Nebulous_41 (EA5), Neferthena_44 (EA5),

Start 19:

- Found in 1 of 161 (0.6%) of genes in pham

- Manual Annotations of this start: 1 of 135
- Called 100.0% of time when present
- Phage (with cluster) where this start called: Schubert_42 (EA8),

Start 22:

- Found in 3 of 161 (1.9%) of genes in pham
- Manual Annotations of this start: 3 of 135
- Called 100.0% of time when present
- Phage (with cluster) where this start called: Casey_41 (EA3), Pajaza_41 (EA3), Pikmin_41 (EA3),

Start 26:

- Found in 14 of 161 (8.7%) of genes in pham
- Manual Annotations of this start: 6 of 135
- Called 64.3% of time when present
- Phage (with cluster) where this start called: CaptainRex_43 (EA5), Fulton_43 (EA5), Greenlvy_43 (EA5), Hasitha_43 (EA5), Librie_43 (EA5), LilTerminator_43 (EA5), QuadZero_43 (EA5), Zayuliv_43 (EA5), Zepp_43 (EA5),

Start 27:

- Found in 125 of 161 (77.6%) of genes in pham
- Manual Annotations of this start: 105 of 135
- Called 100.0% of time when present
- Phage (with cluster) where this start called: Acosta_47 (EA1), Agente005_45 (EA1), AlexAdler_45 (EA1), Alyxandracam_45 (EA1), Antoinette_45 (EA1), AranulaLuti_44 (EA1), Asta_47 (EA1), Aubergine_44 (EA1), AxiPup_45 (EA1), Baines_44 (EA1), Balsa_44 (EA1), Bandik_45 (EA1), BeautPeep30_45 (EA1), BeeBee8_46 (EA1), Benjalauren_45 (EA1), BigRedClifford_45 (EA1), Blage_45 (EA1), BonesMcCoy_45 (EA1), Bonino_44 (EA1), Byron23_46 (EA1), Calix_44 (EA1), Chako_44 (EA1), Chamuel_44 (EA1), Christoph_44 (EA1), Clancy_44 (EA1), Convict_45 (EA1), Dave_45 (EA1), Delphidian_47 (EA1), Den3_45 (EA1), Dothraki_45 (EA1), Duocatuli_44 (EA1), Endor_46 (EA1), Erla_44 (EA1), Espinosa_44 (EA1), Etna_45 (EA1), Etta_44 (EA1), FarmerDoug_44 (EA1), Figueroism_45 (EA1), GardenB_45 (EA1), Garey24_45 (EA1), Gargoyles_45 (EA1), Gelo_44 (EA1), Gershwin_44 (EA1), Greys_45 (EA1), Gubbabump_44 (EA1), Hamlet_45 (EA1), HanSolo_44 (EA1), HankSprout_47 (EA1), HungryHenry_46 (EA1), Ilzat_44 (EA1), Inventa_45 (EA1), Ioannes_45 (EA1), Janus167_44 (EA1), JasonD_49 (EA1), JasperRussell_44 (EA1), Jenos_48 (EA1), Jerbirus_46 (EA1), JeriBeth_46 (EA1), Kale_44 (EA1), KannH_44 (EA1), KingJulien_45 (EA1), Klimt_45 (EA1), Knox_45 (EA1), Kurt1_45 (EA1), Leafus_45 (EA1), Lovelyunicorn_45 (EA1), Ludgate_45 (EA1), MaeLinda_45 (EA1), ManRay_44 (EA1), Martin_46 (EA1), McGalleon_47 (EA1), Mercedes_38 (EA), MillyPhilly_45 (EA1), MonChoix_42 (EA1), MrWorldwide_45 (EA1), Nagem_45 (EA1), Nattles_44 (EA1), NickSell_47 (EA1), Oats_44 (EA1), OldNelly_46 (EA1), Oxtober96_46 (EA1), Papafritta_44 (EA1), ParleG_45 (EA1), Peep_45 (EA1), Peppino_45 (EA1), Pherferi_45 (EA1), Phiderman_47 (EA1), Phireproof_45 (EA1), PhredFlintston_45 (EA1), Phriends_45 (EA1), Pocket_44 (EA1), PuppyEggo_45 (EA1), Raccoon_45 (EA1), Rapheph_45 (EA1), Raptor_45 (EA1), Redfield_45 (EA1), Renzie_45 (EA1), Rihhil_45 (EA1), Robinson_45 (EA1), Rog141_46 (EA1), SJay_45 (EA1), Schnapsidee_45 (EA1), Sedgewig_44 (EA1), ShaiHulud_46 (EA1), Shee_45 (EA1), SoilGremlin_46 (EA1), SonOfLevi_45 (EA1), Stanktossa_45 (EA1), StingRay_44 (EA1), StirfryIV_46 (EA1), Stormbreaker8_44 (EA1), Strathdee_45 (EA1), Superfresh_45 (EA1), TatarkaPM_45 (EA1), Teagan_45 (EA1), TeddyBear_44 (EA1), Tenda_44 (EA1), Thompsone_45 (EA1), Thorongil_45 (EA1),

TinSulphur_46 (EA1), Velene_45 (EA1), Vispistious_46 (EA1), WildNOOut_45 (EA1), Winzigespinne_44 (EA1), Zada_46 (EA1),

Start 28:

- Found in 3 of 161 (1.9%) of genes in pham
- Manual Annotations of this start: 3 of 135
- Called 100.0% of time when present
- Phage (with cluster) where this start called: Cheeto1_45 (EA9), ChickenKing_43 (EA9), GaeCeo_45 (EA9),

Summary by clusters:

There are 8 clusters represented in this pham: EA11, EA, EA9, EA8, EA1, EA3, EA5, EA4,

Info for manual annotations of cluster EA:

- Start number 27 was manually annotated 1 time for cluster EA.

Info for manual annotations of cluster EA1:

- Start number 27 was manually annotated 104 times for cluster EA1.

Info for manual annotations of cluster EA11:

- Start number 1 was manually annotated 4 times for cluster EA11.

Info for manual annotations of cluster EA3:

- Start number 22 was manually annotated 3 times for cluster EA3.

Info for manual annotations of cluster EA4:

- Start number 6 was manually annotated 10 times for cluster EA4.

Info for manual annotations of cluster EA5:

- Start number 2 was manually annotated 1 time for cluster EA5.
- Start number 10 was manually annotated 2 times for cluster EA5.
- Start number 26 was manually annotated 6 times for cluster EA5.

Info for manual annotations of cluster EA8:

- Start number 19 was manually annotated 1 time for cluster EA8.

Info for manual annotations of cluster EA9:

- Start number 28 was manually annotated 3 times for cluster EA9.

Gene Information:

Gene: Acosta_47 Start: 33265, Stop: 32417, Start Num: 27

Candidate Starts for Acosta_47:

(Start: 27 @33265 has 105 MA's), (59, 33082), (66, 33016), (69, 32980), (79, 32923), (108, 32701), (110, 32683), (114, 32647), (119, 32617), (122, 32575), (124, 32458),

Gene: Agente005_45 Start: 33051, Stop: 32146, Start Num: 27

Candidate Starts for Agente005_45:

(Start: 27 @33051 has 105 MA's), (33, 33015), (36, 32994), (73, 32739), (84, 32655), (90, 32601), (95, 32553), (96, 32547), (109, 32427), (110, 32424), (114, 32388), (119, 32358), (122, 32316),

Gene: Alakazam_43 Start: 32406, Stop: 31279, Start Num: 2

Candidate Starts for Alakazam_43:

(Start: 2 @32406 has 1 MA's), (4, 32385), (13, 32271), (Start: 26 @32160 has 6 MA's), (32, 32124), (39, 32076), (48, 32010), (64, 31920), (90, 31752), (95, 31704), (96, 31698), (97, 31695), (98, 31692), (110, 31575), (114, 31539), (119, 31509), (122, 31467), (123, 31392), (125, 31332),

Gene: AlexAdler_45 Start: 33079, Stop: 32273, Start Num: 27

Candidate Starts for AlexAdler_45:

(Start: 27 @33079 has 105 MA's), (44, 32953), (47, 32941), (54, 32917), (95, 32674), (96, 32668), (99, 32656), (102, 32629), (110, 32548), (114, 32512), (119, 32482), (122, 32440), (124, 32323),

Gene: Alyxandracam_45 Start: 33089, Stop: 32283, Start Num: 27

Candidate Starts for Alyxandracam_45:

(Start: 27 @33089 has 105 MA's), (44, 32963), (47, 32951), (54, 32927), (95, 32684), (96, 32678), (102, 32639), (110, 32558), (114, 32522), (119, 32492), (122, 32450), (123, 32375), (124, 32333),

Gene: Antoinette_45 Start: 33079, Stop: 32273, Start Num: 27

Candidate Starts for Antoinette_45:

(Start: 27 @33079 has 105 MA's), (44, 32953), (47, 32941), (54, 32917), (95, 32674), (96, 32668), (102, 32629), (110, 32548), (114, 32512), (119, 32482), (122, 32440), (124, 32323),

Gene: AranulaLuti_44 Start: 32776, Stop: 31967, Start Num: 27

Candidate Starts for AranulaLuti_44:

(Start: 27 @32776 has 105 MA's), (44, 32650), (47, 32638), (54, 32614), (67, 32503), (96, 32365), (98, 32359), (110, 32242), (114, 32206), (119, 32176), (122, 32134), (123, 32059), (124, 32017),

Gene: Asta_47 Start: 32786, Stop: 31980, Start Num: 27

Candidate Starts for Asta_47:

(Start: 27 @32786 has 105 MA's), (44, 32660), (47, 32648), (54, 32624), (95, 32381), (96, 32375), (102, 32336), (110, 32255), (114, 32219), (119, 32189), (122, 32147), (124, 32030),

Gene: Aubergine_44 Start: 32786, Stop: 31980, Start Num: 27

Candidate Starts for Aubergine_44:

(Start: 27 @32786 has 105 MA's), (44, 32660), (47, 32648), (54, 32624), (95, 32381), (96, 32375), (102, 32336), (110, 32255), (114, 32219), (119, 32189), (122, 32147), (124, 32030),

Gene: AxiPup_45 Start: 33058, Stop: 32252, Start Num: 27

Candidate Starts for AxiPup_45:

(Start: 27 @33058 has 105 MA's), (44, 32932), (47, 32920), (54, 32896), (95, 32653), (96, 32647), (102, 32608), (110, 32527), (114, 32491), (119, 32461), (122, 32419), (123, 32344), (124, 32302),

Gene: Baines_44 Start: 32779, Stop: 31973, Start Num: 27

Candidate Starts for Baines_44:

(Start: 27 @32779 has 105 MA's), (44, 32653), (47, 32641), (54, 32617), (95, 32374), (96, 32368), (102, 32329), (110, 32248), (114, 32212), (119, 32182), (122, 32140), (124, 32023),

Gene: Balsa_44 Start: 33038, Stop: 32133, Start Num: 27

Candidate Starts for Balsa_44:

(Start: 27 @33038 has 105 MA's), (33, 33002), (36, 32981), (41, 32939), (54, 32870), (69, 32753), (73, 32726), (90, 32588), (95, 32540), (96, 32534), (102, 32492), (109, 32414), (110, 32411), (114, 32375),

(119, 32345), (122, 32303), (123, 32228),

Gene: Bandik_45 Start: 33084, Stop: 32278, Start Num: 27

Candidate Starts for Bandik_45:

(Start: 27 @33084 has 105 MA's), (44, 32958), (47, 32946), (54, 32922), (95, 32679), (96, 32673), (99, 32661), (102, 32634), (110, 32553), (114, 32517), (119, 32487), (122, 32445), (123, 32370), (124, 32328),

Gene: BeautPeep30_45 Start: 33090, Stop: 32284, Start Num: 27

Candidate Starts for BeautPeep30_45:

(Start: 27 @33090 has 105 MA's), (44, 32964), (47, 32952), (54, 32928), (95, 32685), (96, 32679), (99, 32667), (102, 32640), (110, 32559), (114, 32523), (119, 32493), (122, 32451), (123, 32376), (124, 32334),

Gene: BeeBee8_46 Start: 33209, Stop: 32304, Start Num: 27

Candidate Starts for BeeBee8_46:

(Start: 27 @33209 has 105 MA's), (33, 33173), (36, 33152), (41, 33110), (54, 33041), (69, 32924), (73, 32897), (90, 32759), (95, 32711), (96, 32705), (102, 32663), (109, 32585), (110, 32582), (114, 32546), (119, 32516), (122, 32474), (123, 32399),

Gene: Benjalauren_45 Start: 32792, Stop: 31983, Start Num: 27

Candidate Starts for Benjalauren_45:

(Start: 27 @32792 has 105 MA's), (44, 32666), (47, 32654), (54, 32630), (67, 32519), (96, 32381), (98, 32375), (110, 32258), (114, 32222), (119, 32192), (122, 32150), (123, 32075), (124, 32033),

Gene: BigRedClifford_45 Start: 33088, Stop: 32282, Start Num: 27

Candidate Starts for BigRedClifford_45:

(Start: 27 @33088 has 105 MA's), (44, 32962), (47, 32950), (54, 32926), (95, 32683), (96, 32677), (102, 32638), (110, 32557), (114, 32521), (119, 32491), (122, 32449), (123, 32374), (124, 32332),

Gene: Blage_45 Start: 33088, Stop: 32282, Start Num: 27

Candidate Starts for Blage_45:

(Start: 27 @33088 has 105 MA's), (44, 32962), (47, 32950), (54, 32926), (95, 32683), (96, 32677), (102, 32638), (110, 32557), (114, 32521), (119, 32491), (122, 32449), (123, 32374), (124, 32332),

Gene: BonesMcCoy_45 Start: 33088, Stop: 32282, Start Num: 27

Candidate Starts for BonesMcCoy_45:

(Start: 27 @33088 has 105 MA's), (44, 32962), (47, 32950), (54, 32926), (95, 32683), (96, 32677), (102, 32638), (110, 32557), (114, 32521), (119, 32491), (122, 32449), (123, 32374), (124, 32332),

Gene: Bonino_44 Start: 32765, Stop: 31959, Start Num: 27

Candidate Starts for Bonino_44:

(Start: 27 @32765 has 105 MA's), (44, 32639), (47, 32627), (54, 32603), (95, 32360), (96, 32354), (102, 32315), (110, 32234), (114, 32198), (119, 32168), (122, 32126), (124, 32009),

Gene: BouleyBill_43 Start: 31954, Stop: 31139, Start Num: 6

Candidate Starts for BouleyBill_43:

(Start: 6 @31954 has 10 MA's), (14, 31903), (20, 31858), (23, 31828), (43, 31696), (73, 31669), (76, 31651), (83, 31588), (85, 31561), (88, 31546), (90, 31528), (91, 31516), (98, 31468), (106, 31423), (110, 31408), (114, 31372), (115, 31369), (116, 31357), (120, 31330), (122, 31300), (125, 31168), (127, 31144),

Gene: Bustleton_42 Start: 31748, Stop: 30930, Start Num: 6

Candidate Starts for Bustleton_42:

(Start: 6 @31748 has 10 MA's), (11, 31718), (14, 31697), (20, 31652), (23, 31622), (33, 31577), (43, 31490), (45, 31475), (73, 31460), (76, 31442), (83, 31379), (85, 31352), (88, 31337), (90, 31319), (91, 31307), (98, 31259), (106, 31214), (110, 31199), (114, 31163), (115, 31160), (116, 31148), (120, 31121), (122, 31091), (125, 30959), (127, 30935),

Gene: Byron23_46 Start: 33087, Stop: 32281, Start Num: 27

Candidate Starts for Byron23_46:

(Start: 27 @33087 has 105 MA's), (44, 32961), (47, 32949), (54, 32925), (95, 32682), (96, 32676), (99, 32664), (102, 32637), (110, 32556), (114, 32520), (119, 32490), (122, 32448), (123, 32373), (124, 32331),

Gene: Calix_44 Start: 32772, Stop: 31966, Start Num: 27

Candidate Starts for Calix_44:

(Start: 27 @32772 has 105 MA's), (44, 32646), (47, 32634), (54, 32610), (95, 32367), (96, 32361), (102, 32322), (110, 32241), (114, 32205), (119, 32175), (122, 32133), (124, 32016),

Gene: CaptainRex_43 Start: 30427, Stop: 29567, Start Num: 26

Candidate Starts for CaptainRex_43:

(Start: 26 @30427 has 6 MA's), (57, 30268), (68, 30163), (71, 30148), (75, 30115), (77, 30112), (93, 30016), (95, 29989), (96, 29983), (97, 29980), (103, 29920), (108, 29878), (109, 29863), (114, 29824), (116, 29809), (119, 29794), (121, 29767), (122, 29752), (124, 29635),

Gene: Casey_41 Start: 31268, Stop: 30519, Start Num: 22

Candidate Starts for Casey_41:

(Start: 22 @31268 has 3 MA's), (24, 31250), (30, 31223), (49, 31094), (70, 31058), (82, 30959), (85, 30932), (87, 30920), (90, 30899), (92, 30884), (112, 30758), (114, 30743), (115, 30740), (116, 30728), (120, 30701), (122, 30671), (125, 30539),

Gene: Chako_44 Start: 32776, Stop: 31967, Start Num: 27

Candidate Starts for Chako_44:

(Start: 27 @32776 has 105 MA's), (44, 32650), (47, 32638), (54, 32614), (96, 32365), (98, 32359), (110, 32242), (114, 32206), (119, 32176), (122, 32134), (123, 32059), (124, 32017),

Gene: Chamuel_44 Start: 32798, Stop: 31992, Start Num: 27

Candidate Starts for Chamuel_44:

(Start: 27 @32798 has 105 MA's), (44, 32672), (47, 32660), (54, 32636), (95, 32393), (96, 32387), (102, 32348), (110, 32267), (114, 32231), (119, 32201), (122, 32159), (124, 32042),

Gene: Cheeto1_45 Start: 32549, Stop: 31746, Start Num: 28

Candidate Starts for Cheeto1_45:

(16, 32630), (Start: 28 @32549 has 3 MA's), (35, 32519), (38, 32498), (46, 32423), (52, 32402), (61, 32357), (68, 32294), (74, 32258), (78, 32240), (85, 32162), (90, 32129), (96, 32075), (109, 32009), (114, 31970), (118, 31946), (122, 31898), (123, 31823),

Gene: ChickenKing_43 Start: 32442, Stop: 31639, Start Num: 28

Candidate Starts for ChickenKing_43:

(16, 32523), (Start: 28 @32442 has 3 MA's), (35, 32412), (38, 32391), (46, 32316), (52, 32295), (61, 32250), (74, 32151), (78, 32133), (85, 32055), (90, 32022), (96, 31968), (109, 31902), (114, 31863), (118, 31839), (122, 31791),

Gene: Christoph_44 Start: 32785, Stop: 31979, Start Num: 27

Candidate Starts for Christoph_44:

(Start: 27 @32785 has 105 MA's), (44, 32659), (47, 32647), (54, 32623), (95, 32380), (96, 32374), (102, 32335), (110, 32254), (114, 32218), (119, 32188), (122, 32146), (124, 32029),

Gene: Clancy_44 Start: 32821, Stop: 32012, Start Num: 27

Candidate Starts for Clancy_44:

(Start: 27 @32821 has 105 MA's), (44, 32695), (47, 32683), (54, 32659), (67, 32548), (96, 32410), (98, 32404), (110, 32287), (114, 32251), (119, 32221), (122, 32179), (123, 32104), (124, 32062),

Gene: Clock_41 Start: 33154, Stop: 32201, Start Num: 10

Candidate Starts for Clock_41:

(5, 33229), (Start: 10 @33154 has 2 MA's), (12, 33124), (15, 33094), (20, 33058), (23, 33028), (29, 33007), (33, 32983), (37, 32959), (43, 32896), (51, 32860), (56, 32845), (72, 32812), (80, 32746), (90, 32659), (91, 32647), (94, 32626), (96, 32605), (100, 32575), (103, 32542), (105, 32524), (109, 32497), (110, 32494), (114, 32458), (117, 32440), (118, 32434), (122, 32386), (123, 32311), (124, 32269),

Gene: Convict_45 Start: 33088, Stop: 32282, Start Num: 27

Candidate Starts for Convict_45:

(Start: 27 @33088 has 105 MA's), (44, 32962), (47, 32950), (54, 32926), (95, 32683), (96, 32677), (102, 32638), (110, 32557), (114, 32521), (119, 32491), (122, 32449), (123, 32374), (124, 32332),

Gene: Dave_45 Start: 33079, Stop: 32273, Start Num: 27

Candidate Starts for Dave_45:

(Start: 27 @33079 has 105 MA's), (44, 32953), (47, 32941), (54, 32917), (95, 32674), (96, 32668), (102, 32629), (110, 32548), (114, 32512), (119, 32482), (122, 32440), (124, 32323),

Gene: Delphidian_47 Start: 33087, Stop: 32281, Start Num: 27

Candidate Starts for Delphidian_47:

(Start: 27 @33087 has 105 MA's), (44, 32961), (47, 32949), (54, 32925), (95, 32682), (96, 32676), (99, 32664), (102, 32637), (110, 32556), (114, 32520), (119, 32490), (122, 32448), (123, 32373), (124, 32331),

Gene: Den3_45 Start: 33093, Stop: 32287, Start Num: 27

Candidate Starts for Den3_45:

(Start: 27 @33093 has 105 MA's), (44, 32967), (47, 32955), (54, 32931), (95, 32688), (96, 32682), (102, 32643), (110, 32562), (114, 32526), (119, 32496), (122, 32454), (123, 32379), (124, 32337),

Gene: Dothraki_45 Start: 33087, Stop: 32281, Start Num: 27

Candidate Starts for Dothraki_45:

(Start: 27 @33087 has 105 MA's), (44, 32961), (47, 32949), (54, 32925), (95, 32682), (96, 32676), (99, 32664), (102, 32637), (110, 32556), (114, 32520), (119, 32490), (122, 32448), (123, 32373), (124, 32331),

Gene: Duocatuli_44 Start: 32776, Stop: 31967, Start Num: 27

Candidate Starts for Duocatuli_44:

(Start: 27 @32776 has 105 MA's), (44, 32650), (47, 32638), (54, 32614), (96, 32365), (98, 32359), (110, 32242), (114, 32206), (119, 32176), (122, 32134), (123, 32059), (124, 32017),

Gene: Endor_46 Start: 33281, Stop: 32376, Start Num: 27

Candidate Starts for Endor_46:

(Start: 27 @33281 has 105 MA's), (40, 33194), (66, 33032), (69, 32996), (73, 32969), (84, 32885), (90, 32831), (95, 32783), (96, 32777), (109, 32657), (110, 32654), (114, 32618), (119, 32588), (122, 32546),

Gene: Erla_44 Start: 32769, Stop: 31963, Start Num: 27

Candidate Starts for Erla_44:

(Start: 27 @32769 has 105 MA's), (44, 32643), (47, 32631), (54, 32607), (95, 32364), (96, 32358), (102, 32319), (110, 32238), (114, 32202), (119, 32172), (122, 32130), (124, 32013),

Gene: Espinosa_44 Start: 32784, Stop: 31978, Start Num: 27

Candidate Starts for Espinosa_44:

(Start: 27 @32784 has 105 MA's), (44, 32658), (47, 32646), (54, 32622), (95, 32379), (96, 32373), (102, 32334), (110, 32253), (114, 32217), (119, 32187), (122, 32145), (124, 32028),

Gene: Etna_45 Start: 33085, Stop: 32180, Start Num: 27

Candidate Starts for Etna_45:

(Start: 27 @33085 has 105 MA's), (36, 33028), (41, 32986), (44, 32953), (54, 32917), (73, 32773), (90, 32635), (95, 32587), (96, 32581), (103, 32518), (104, 32515), (109, 32461), (114, 32422), (119, 32392), (122, 32350),

Gene: Etta_44 Start: 32773, Stop: 31967, Start Num: 27

Candidate Starts for Etta_44:

(Start: 27 @32773 has 105 MA's), (44, 32647), (47, 32635), (54, 32611), (95, 32368), (96, 32362), (102, 32323), (110, 32242), (114, 32206), (119, 32176), (122, 32134), (124, 32017),

Gene: FarmerDoug_44 Start: 32791, Stop: 31886, Start Num: 27

Candidate Starts for FarmerDoug_44:

(Start: 27 @32791 has 105 MA's), (38, 32725), (44, 32659), (54, 32623), (73, 32479), (90, 32341), (95, 32293), (96, 32287), (109, 32167), (114, 32128), (119, 32098), (122, 32056), (126, 31918),

Gene: Figueroism_45 Start: 33078, Stop: 32272, Start Num: 27

Candidate Starts for Figueroism_45:

(Start: 27 @33078 has 105 MA's), (44, 32952), (47, 32940), (54, 32916), (95, 32673), (96, 32667), (102, 32628), (110, 32547), (114, 32511), (119, 32481), (122, 32439), (123, 32364), (124, 32322),

Gene: Fulton_43 Start: 30428, Stop: 29568, Start Num: 26

Candidate Starts for Fulton_43:

(Start: 26 @30428 has 6 MA's), (57, 30269), (68, 30164), (71, 30149), (75, 30116), (77, 30113), (93, 30017), (95, 29990), (96, 29984), (97, 29981), (103, 29921), (108, 29879), (109, 29864), (114, 29825), (116, 29810), (119, 29795), (121, 29768), (122, 29753), (124, 29636),

Gene: GaeCeo_45 Start: 32675, Stop: 31872, Start Num: 28

Candidate Starts for GaeCeo_45:

(16, 32756), (Start: 28 @32675 has 3 MA's), (35, 32645), (38, 32624), (46, 32549), (52, 32528), (61, 32483), (74, 32384), (78, 32366), (85, 32288), (90, 32255), (96, 32201), (109, 32135), (114, 32096), (118, 32072), (122, 32024),

Gene: GardenB_45 Start: 33026, Stop: 32121, Start Num: 27

Candidate Starts for GardenB_45:

(Start: 27 @33026 has 105 MA's), (41, 32927), (73, 32714), (84, 32630), (102, 32480), (109, 32402), (110, 32399), (114, 32363), (119, 32333), (122, 32291), (123, 32216),

Gene: Garey24_45 Start: 32752, Stop: 31946, Start Num: 27

Candidate Starts for Garey24_45:

(Start: 27 @32752 has 105 MA's), (44, 32626), (47, 32614), (54, 32590), (95, 32347), (96, 32341), (102, 32302), (110, 32221), (114, 32185), (119, 32155), (122, 32113), (124, 31996),

Gene: Gargoyle_45 Start: 33093, Stop: 32287, Start Num: 27

Candidate Starts for Gargoyle_45:

(Start: 27 @33093 has 105 MA's), (44, 32967), (47, 32955), (54, 32931), (95, 32688), (96, 32682), (102, 32643), (110, 32562), (114, 32526), (119, 32496), (122, 32454), (123, 32379), (124, 32337),

Gene: Gelo_44 Start: 32779, Stop: 31973, Start Num: 27

Candidate Starts for Gelo_44:

(Start: 27 @32779 has 105 MA's), (44, 32653), (47, 32641), (54, 32617), (95, 32374), (96, 32368), (102, 32329), (110, 32248), (114, 32212), (119, 32182), (122, 32140), (124, 32023),

Gene: Gershwin_44 Start: 32786, Stop: 31980, Start Num: 27

Candidate Starts for Gershwin_44:

(Start: 27 @32786 has 105 MA's), (44, 32660), (47, 32648), (54, 32624), (95, 32381), (96, 32375), (102, 32336), (110, 32255), (114, 32219), (119, 32189), (122, 32147), (124, 32030),

Gene: Golden_42 Start: 31840, Stop: 31010, Start Num: 6

Candidate Starts for Golden_42:

(Start: 6 @31840 has 10 MA's), (9, 31816), (11, 31786), (14, 31765), (15, 31756), (20, 31720), (23, 31690), (43, 31558), (73, 31531), (76, 31513), (83, 31450), (85, 31423), (88, 31408), (90, 31390), (91, 31378), (95, 31342), (110, 31270), (114, 31234), (115, 31231), (116, 31219), (120, 31192), (122, 31162), (125, 31030),

Gene: Greenlvy_43 Start: 30783, Stop: 29908, Start Num: 26

Candidate Starts for Greenlvy_43:

(Start: 26 @30783 has 6 MA's), (39, 30702), (59, 30603), (64, 30546), (95, 30330), (96, 30324), (97, 30321), (103, 30261), (108, 30219), (109, 30204), (114, 30165), (116, 30150), (119, 30135), (121, 30108), (122, 30093), (124, 29976),

Gene: Greys_45 Start: 33086, Stop: 32280, Start Num: 27

Candidate Starts for Greys_45:

(Start: 27 @33086 has 105 MA's), (44, 32960), (47, 32948), (54, 32924), (95, 32681), (96, 32675), (102, 32636), (110, 32555), (114, 32519), (119, 32489), (122, 32447), (123, 32372), (124, 32330),

Gene: Gubbabump_44 Start: 32766, Stop: 31960, Start Num: 27

Candidate Starts for Gubbabump_44:

(Start: 27 @32766 has 105 MA's), (44, 32640), (47, 32628), (54, 32604), (95, 32361), (96, 32355), (102, 32316), (110, 32235), (114, 32199), (119, 32169), (122, 32127), (124, 32010),

Gene: Guetzie_43 Start: 31825, Stop: 30995, Start Num: 6

Candidate Starts for Guetzie_43:

(Start: 6 @31825 has 10 MA's), (9, 31801), (11, 31771), (14, 31750), (15, 31741), (20, 31705), (23, 31675), (43, 31543), (73, 31516), (76, 31498), (83, 31435), (85, 31408), (88, 31393), (90, 31375), (91, 31363), (95, 31327), (110, 31255), (114, 31219), (115, 31216), (116, 31204), (120, 31177), (122, 31147), (125, 31015),

Gene: Hamlet_45 Start: 33030, Stop: 32125, Start Num: 27

Candidate Starts for Hamlet_45:

(Start: 27 @33030 has 105 MA's), (33, 32994), (36, 32973), (41, 32931), (54, 32862), (69, 32745), (73, 32718), (90, 32580), (95, 32532), (96, 32526), (102, 32484), (109, 32406), (110, 32403), (114, 32367), (119, 32337), (122, 32295), (123, 32220),

Gene: HanSolo_44 Start: 32776, Stop: 31967, Start Num: 27

Candidate Starts for HanSolo_44:

(Start: 27 @32776 has 105 MA's), (44, 32650), (47, 32638), (54, 32614), (67, 32503), (96, 32365), (98, 32359), (110, 32242), (114, 32206), (119, 32176), (122, 32134), (123, 32059), (124, 32017),

Gene: HankSprout_47 Start: 32653, Stop: 31847, Start Num: 27

Candidate Starts for HankSprout_47:

(Start: 27 @32653 has 105 MA's), (44, 32527), (47, 32515), (54, 32491), (95, 32248), (96, 32242), (102, 32203), (110, 32122), (114, 32086), (119, 32056), (122, 32014), (123, 31939), (124, 31897),

Gene: Hasitha_43 Start: 30440, Stop: 29580, Start Num: 26

Candidate Starts for Hasitha_43:

(Start: 26 @30440 has 6 MA's), (57, 30281), (68, 30176), (71, 30161), (75, 30128), (77, 30125), (93, 30029), (95, 30002), (96, 29996), (97, 29993), (103, 29933), (108, 29891), (109, 29876), (114, 29837), (116, 29822), (119, 29807), (121, 29780), (122, 29765), (124, 29648),

Gene: HerculesXL_41 Start: 30550, Stop: 29477, Start Num: 1

Candidate Starts for HerculesXL_41:

(Start: 1 @30550 has 4 MA's), (3, 30526), (7, 30454), (8, 30445), (18, 30355), (Start: 26 @30292 has 6 MA's), (32, 30259), (36, 30232), (47, 30148), (65, 30046), (67, 30025), (72, 30004), (85, 29890), (86, 29881), (90, 29857), (91, 29845), (95, 29809), (96, 29803), (111, 29725), (114, 29698), (117, 29680), (118, 29674), (119, 29668), (121, 29641), (122, 29626), (123, 29551),

Gene: HungryHenry_46 Start: 32781, Stop: 31972, Start Num: 27

Candidate Starts for HungryHenry_46:

(Start: 27 @32781 has 105 MA's), (44, 32655), (47, 32643), (54, 32619), (67, 32508), (96, 32370), (98, 32364), (110, 32247), (114, 32211), (119, 32181), (122, 32139), (123, 32064), (124, 32022),

Gene: Ilzat_44 Start: 32792, Stop: 31983, Start Num: 27

Candidate Starts for Ilzat_44:

(Start: 27 @32792 has 105 MA's), (44, 32666), (47, 32654), (54, 32630), (67, 32519), (96, 32381), (98, 32375), (110, 32258), (114, 32222), (119, 32192), (122, 32150), (123, 32075), (124, 32033),

Gene: Inventa_45 Start: 33084, Stop: 32278, Start Num: 27

Candidate Starts for Inventa_45:

(Start: 27 @33084 has 105 MA's), (44, 32958), (47, 32946), (54, 32922), (95, 32679), (96, 32673), (99, 32661), (102, 32634), (110, 32553), (114, 32517), (119, 32487), (122, 32445), (123, 32370), (124, 32328),

Gene: Ioannes_45 Start: 33088, Stop: 32282, Start Num: 27

Candidate Starts for Ioannes_45:

(Start: 27 @33088 has 105 MA's), (44, 32962), (47, 32950), (54, 32926), (95, 32683), (96, 32677), (101, 32641), (102, 32638), (110, 32557), (114, 32521), (119, 32491), (122, 32449), (124, 32332),

Gene: Ixel_44 Start: 32296, Stop: 31250, Start Num: 1

Candidate Starts for Ixel_44:

(Start: 1 @32296 has 4 MA's), (7, 32209), (13, 32161), (17, 32119), (21, 32077), (41, 31966), (67, 31798), (72, 31777), (85, 31663), (86, 31654), (90, 31630), (91, 31618), (95, 31582), (114, 31471), (118, 31447), (121, 31414), (122, 31399),

Gene: Janus167_44 Start: 32773, Stop: 31967, Start Num: 27

Candidate Starts for Janus167_44:

(Start: 27 @32773 has 105 MA's), (44, 32647), (47, 32635), (54, 32611), (95, 32368), (96, 32362), (102, 32323), (110, 32242), (114, 32206), (119, 32176), (122, 32134), (123, 32059), (124, 32017),

Gene: JasonD_49 Start: 33193, Stop: 32345, Start Num: 27

Candidate Starts for JasonD_49:

(Start: 27 @33193 has 105 MA's), (44, 33061), (59, 33010), (66, 32944), (69, 32908), (95, 32740), (96, 32734), (108, 32629), (110, 32611), (113, 32581), (114, 32575), (119, 32545), (122, 32503), (124, 32386),

Gene: JasperRussell_44 Start: 32776, Stop: 31967, Start Num: 27

Candidate Starts for JasperRussell_44:

(Start: 27 @32776 has 105 MA's), (44, 32650), (47, 32638), (54, 32614), (96, 32365), (98, 32359), (110, 32242), (114, 32206), (119, 32176), (122, 32134), (123, 32059), (124, 32017),

Gene: Jenos_48 Start: 33896, Stop: 32982, Start Num: 27

Candidate Starts for Jenos_48:

(Start: 27 @33896 has 105 MA's), (44, 33764), (59, 33713), (66, 33647), (69, 33611), (109, 33269), (114, 33230), (119, 33200), (122, 33158), (124, 33041), (125, 33023),

Gene: Jerbirus_46 Start: 32776, Stop: 31967, Start Num: 27

Candidate Starts for Jerbirus_46:

(Start: 27 @32776 has 105 MA's), (44, 32650), (47, 32638), (54, 32614), (67, 32503), (96, 32365), (98, 32359), (110, 32242), (114, 32206), (119, 32176), (122, 32134), (123, 32059), (124, 32017),

Gene: JeriBeth_46 Start: 32639, Stop: 31830, Start Num: 27

Candidate Starts for JeriBeth_46:

(Start: 27 @32639 has 105 MA's), (44, 32513), (47, 32501), (54, 32477), (67, 32366), (96, 32228), (98, 32222), (110, 32105), (114, 32069), (119, 32039), (122, 31997), (123, 31922), (124, 31880),

Gene: Kale_44 Start: 32788, Stop: 31982, Start Num: 27

Candidate Starts for Kale_44:

(Start: 27 @32788 has 105 MA's), (44, 32662), (47, 32650), (54, 32626), (95, 32383), (96, 32377), (102, 32338), (110, 32257), (114, 32221), (119, 32191), (122, 32149), (124, 32032),

Gene: KannH_44 Start: 32776, Stop: 31967, Start Num: 27

Candidate Starts for KannH_44:

(Start: 27 @32776 has 105 MA's), (44, 32650), (47, 32638), (54, 32614), (67, 32503), (96, 32365), (98, 32359), (110, 32242), (114, 32206), (119, 32176), (122, 32134), (123, 32059), (124, 32017),

Gene: Kauala_42 Start: 32120, Stop: 31143, Start Num: 6

Candidate Starts for Kauala_42:

(Start: 6 @32120 has 10 MA's), (14, 32069), (15, 32060), (20, 32024), (33, 31949), (43, 31862), (50, 31829), (55, 31814), (60, 31784), (61, 31775), (73, 31673), (76, 31655), (83, 31592), (85, 31565), (90, 31532), (91, 31520), (98, 31472), (106, 31427), (110, 31412), (114, 31376), (115, 31373), (116, 31361), (120, 31334), (122, 31304), (125, 31172), (127, 31148),

Gene: KingJulien_45 Start: 32921, Stop: 32016, Start Num: 27

Candidate Starts for KingJulien_45:

(Start: 27 @32921 has 105 MA's), (36, 32864), (41, 32822), (44, 32789), (54, 32753), (73, 32609), (90, 32471), (95, 32423), (96, 32417), (103, 32354), (104, 32351), (109, 32297), (114, 32258), (119, 32228), (122, 32186),

Gene: Klimt_45 Start: 32804, Stop: 31998, Start Num: 27

Candidate Starts for Klimt_45:

(Start: 27 @32804 has 105 MA's), (44, 32678), (47, 32666), (54, 32642), (95, 32399), (96, 32393), (102, 32354), (110, 32273), (114, 32237), (119, 32207), (122, 32165), (124, 32048),

Gene: Knox_45 Start: 33088, Stop: 32282, Start Num: 27

Candidate Starts for Knox_45:

(Start: 27 @33088 has 105 MA's), (44, 32962), (47, 32950), (54, 32926), (95, 32683), (96, 32677), (102, 32638), (110, 32557), (114, 32521), (119, 32491), (122, 32449), (123, 32374), (124, 32332),

Gene: Koji_42 Start: 32119, Stop: 31304, Start Num: 6

Candidate Starts for Koji_42:

(Start: 6 @32119 has 10 MA's), (14, 32068), (15, 32059), (23, 31993), (43, 31861), (73, 31834), (76, 31816), (83, 31753), (85, 31726), (88, 31711), (90, 31693), (91, 31681), (98, 31633), (106, 31588), (110, 31573), (114, 31537), (115, 31534), (116, 31522), (120, 31495), (122, 31465), (125, 31333),

Gene: Kurt1_45 Start: 33084, Stop: 32278, Start Num: 27

Candidate Starts for Kurt1_45:

(Start: 27 @33084 has 105 MA's), (44, 32958), (47, 32946), (54, 32922), (95, 32679), (96, 32673), (99, 32661), (102, 32634), (110, 32553), (114, 32517), (119, 32487), (122, 32445), (123, 32370), (124, 32328),

Gene: Leafus_45 Start: 33184, Stop: 32279, Start Num: 27

Candidate Starts for Leafus_45:

(Start: 27 @33184 has 105 MA's), (33, 33148), (36, 33127), (54, 33016), (73, 32872), (90, 32734), (95, 32686), (96, 32680), (102, 32638), (109, 32560), (110, 32557), (114, 32521), (119, 32491), (122, 32449), (123, 32374),

Gene: Librie_43 Start: 30427, Stop: 29567, Start Num: 26

Candidate Starts for Librie_43:

(Start: 26 @30427 has 6 MA's), (57, 30268), (68, 30163), (71, 30148), (75, 30115), (77, 30112), (93, 30016), (95, 29989), (96, 29983), (97, 29980), (103, 29920), (108, 29878), (109, 29863), (114, 29824), (116, 29809), (119, 29794), (121, 29767), (122, 29752), (124, 29635),

Gene: LilTerminator_43 Start: 30449, Stop: 29589, Start Num: 26

Candidate Starts for LilTerminator_43:

(Start: 26 @30449 has 6 MA's), (57, 30290), (68, 30185), (71, 30170), (75, 30137), (77, 30134), (95, 30011), (96, 30005), (97, 30002), (103, 29942), (108, 29900), (114, 29846), (116, 29831), (119, 29816), (121, 29789), (122, 29774), (124, 29657),

Gene: Lovelyunicorn_45 Start: 33089, Stop: 32283, Start Num: 27

Candidate Starts for Lovelyunicorn_45:

(Start: 27 @33089 has 105 MA's), (44, 32963), (47, 32951), (54, 32927), (95, 32684), (96, 32678), (102, 32639), (110, 32558), (114, 32522), (119, 32492), (122, 32450), (123, 32375), (124, 32333),

Gene: Lucky3_42 Start: 31840, Stop: 31010, Start Num: 6

Candidate Starts for Lucky3_42:

(Start: 6 @31840 has 10 MA's), (9, 31816), (11, 31786), (14, 31765), (15, 31756), (20, 31720), (23, 31690), (43, 31558), (73, 31531), (76, 31513), (83, 31450), (85, 31423), (88, 31408), (90, 31390), (91, 31378), (95, 31342), (110, 31270), (114, 31234), (115, 31231), (116, 31219), (120, 31192), (122, 31162), (125, 31030),

Gene: Ludgate_45 Start: 33087, Stop: 32281, Start Num: 27

Candidate Starts for Ludgate_45:

(Start: 27 @33087 has 105 MA's), (44, 32961), (47, 32949), (54, 32925), (95, 32682), (96, 32676), (102, 32637), (110, 32556), (114, 32520), (119, 32490), (122, 32448), (123, 32373), (124, 32331),

Gene: MaeLinda_45 Start: 33088, Stop: 32282, Start Num: 27

Candidate Starts for MaeLinda_45:

(Start: 27 @33088 has 105 MA's), (44, 32962), (47, 32950), (54, 32926), (95, 32683), (96, 32677), (99, 32665), (102, 32638), (110, 32557), (114, 32521), (119, 32491), (122, 32449), (123, 32374), (124, 32332),

Gene: ManRay_44 Start: 32786, Stop: 31980, Start Num: 27

Candidate Starts for ManRay_44:

(Start: 27 @32786 has 105 MA's), (44, 32660), (47, 32648), (54, 32624), (95, 32381), (96, 32375), (102, 32336), (110, 32255), (114, 32219), (119, 32189), (122, 32147), (124, 32030),

Gene: Martin_46 Start: 33093, Stop: 32287, Start Num: 27

Candidate Starts for Martin_46:

(Start: 27 @33093 has 105 MA's), (44, 32967), (47, 32955), (54, 32931), (95, 32688), (96, 32682), (99, 32670), (102, 32643), (110, 32562), (114, 32526), (119, 32496), (122, 32454), (123, 32379), (124, 32337),

Gene: McGalleon_47 Start: 34056, Stop: 33193, Start Num: 27

Candidate Starts for McGalleon_47:

(Start: 27 @34056 has 105 MA's), (44, 33924), (59, 33873), (66, 33807), (69, 33771), (109, 33480), (114, 33441), (119, 33411), (122, 33369), (124, 33252), (125, 33234),

Gene: Mercedes_38 Start: 30460, Stop: 29597, Start Num: 27

Candidate Starts for Mercedes_38:

(Start: 27 @30460 has 105 MA's), (53, 30310), (58, 30295), (63, 30238), (64, 30235), (95, 30019), (96, 30013), (97, 30010), (103, 29950), (108, 29908), (109, 29893), (116, 29839), (119, 29824), (122, 29782), (124, 29665),

Gene: MillyPhilly_45 Start: 33081, Stop: 32275, Start Num: 27

Candidate Starts for MillyPhilly_45:

(Start: 27 @33081 has 105 MA's), (44, 32955), (47, 32943), (54, 32919), (95, 32676), (96, 32670), (99, 32658), (102, 32631), (110, 32550), (114, 32514), (119, 32484), (122, 32442), (123, 32367), (124, 32325),

Gene: MonChoix_42 Start: 32633, Stop: 31728, Start Num: 27

Candidate Starts for MonChoix_42:

(Start: 27 @32633 has 105 MA's), (33, 32597), (41, 32534), (44, 32501), (54, 32465), (73, 32321), (84, 32237), (89, 32186), (90, 32183), (95, 32135), (96, 32129), (107, 32027), (108, 32024), (109, 32009), (114, 31970), (119, 31940), (122, 31898), (123, 31823),

Gene: MrWorldwide_45 Start: 33091, Stop: 32285, Start Num: 27

Candidate Starts for MrWorldwide_45:

(Start: 27 @33091 has 105 MA's), (44, 32965), (47, 32953), (54, 32929), (95, 32686), (96, 32680), (99, 32668), (102, 32641), (110, 32560), (114, 32524), (119, 32494), (122, 32452), (123, 32377), (124, 32335),

Gene: Nagem_45 Start: 33084, Stop: 32278, Start Num: 27

Candidate Starts for Nagem_45:

(Start: 27 @33084 has 105 MA's), (44, 32958), (47, 32946), (54, 32922), (95, 32679), (96, 32673), (99, 32661), (102, 32634), (110, 32553), (114, 32517), (119, 32487), (122, 32445), (123, 32370), (124, 32328),

Gene: Nattles_44 Start: 32773, Stop: 31967, Start Num: 27

Candidate Starts for Nattles_44:

(Start: 27 @32773 has 105 MA's), (44, 32647), (47, 32635), (54, 32611), (95, 32368), (96, 32362), (102, 32323), (110, 32242), (114, 32206), (119, 32176), (122, 32134), (124, 32017),

Gene: Nebulous_41 Start: 33335, Stop: 32382, Start Num: 10

Candidate Starts for Nebulous_41:

(5, 33410), (Start: 10 @33335 has 2 MA's), (12, 33305), (15, 33275), (20, 33239), (23, 33209), (29, 33188), (33, 33164), (37, 33140), (43, 33077), (51, 33041), (56, 33026), (80, 32927), (90, 32840), (91, 32828), (94, 32807), (96, 32786), (100, 32756), (103, 32723), (105, 32705), (109, 32678), (110, 32675), (114, 32639), (117, 32621), (118, 32615), (122, 32567), (123, 32492), (124, 32450),

Gene: Neferthena_44 Start: 32676, Stop: 31723, Start Num: 10

Candidate Starts for Neferthena_44:

(5, 32751), (Start: 10 @32676 has 2 MA's), (12, 32646), (15, 32616), (20, 32580), (23, 32550), (33, 32505), (37, 32481), (43, 32418), (56, 32367), (72, 32334), (80, 32268), (90, 32181), (91, 32169), (94, 32148), (96, 32127), (100, 32097), (103, 32064), (105, 32046), (109, 32019), (110, 32016), (114, 31980), (117, 31962), (118, 31956), (122, 31908), (123, 31833), (124, 31791),

Gene: NickSell_47 Start: 33094, Stop: 32288, Start Num: 27

Candidate Starts for NickSell_47:

(Start: 27 @33094 has 105 MA's), (44, 32968), (47, 32956), (54, 32932), (95, 32689), (96, 32683), (99, 32671), (102, 32644), (110, 32563), (114, 32527), (119, 32497), (122, 32455), (123, 32380), (124, 32338),

Gene: Oats_44 Start: 32786, Stop: 31980, Start Num: 27

Candidate Starts for Oats_44:

(Start: 27 @32786 has 105 MA's), (44, 32660), (47, 32648), (54, 32624), (95, 32381), (96, 32375), (102, 32336), (110, 32255), (114, 32219), (119, 32189), (122, 32147), (124, 32030),

Gene: OldNelly_46 Start: 33090, Stop: 32284, Start Num: 27

Candidate Starts for OldNelly_46:

(Start: 27 @33090 has 105 MA's), (44, 32964), (47, 32952), (54, 32928), (95, 32685), (96, 32679), (99, 32667), (102, 32640), (110, 32559), (114, 32523), (119, 32493), (122, 32451), (123, 32376), (124, 32334),

Gene: Oxtober96_46 Start: 33089, Stop: 32283, Start Num: 27

Candidate Starts for Oxtober96_46:

(Start: 27 @33089 has 105 MA's), (44, 32963), (47, 32951), (54, 32927), (95, 32684), (96, 32678), (102, 32639), (110, 32558), (114, 32522), (119, 32492), (122, 32450), (123, 32375), (124, 32333),

Gene: Pajaza_41 Start: 31268, Stop: 30519, Start Num: 22

Candidate Starts for Pajaza_41:

(Start: 22 @31268 has 3 MA's), (24, 31250), (30, 31223), (49, 31094), (70, 31058), (82, 30959), (85, 30932), (87, 30920), (90, 30899), (92, 30884), (112, 30758), (114, 30743), (115, 30740), (116, 30728), (120, 30701), (122, 30671), (125, 30539),

Gene: Papafritta_44 Start: 32797, Stop: 31988, Start Num: 27

Candidate Starts for Papafritta_44:

(Start: 27 @32797 has 105 MA's), (44, 32671), (47, 32659), (54, 32635), (96, 32386), (98, 32380), (110, 32263), (114, 32227), (119, 32197), (122, 32155), (123, 32080), (124, 32038),

Gene: ParleG_45 Start: 33091, Stop: 32285, Start Num: 27

Candidate Starts for ParleG_45:

(Start: 27 @33091 has 105 MA's), (44, 32965), (47, 32953), (54, 32929), (95, 32686), (96, 32680), (99, 32668), (102, 32641), (110, 32560), (114, 32524), (119, 32494), (122, 32452), (123, 32377), (124, 32335),

Gene: Peep_45 Start: 33076, Stop: 32270, Start Num: 27

Candidate Starts for Peep_45:

(Start: 27 @33076 has 105 MA's), (44, 32950), (47, 32938), (54, 32914), (95, 32671), (96, 32665), (102, 32626), (110, 32545), (114, 32509), (119, 32479), (122, 32437), (124, 32320),

Gene: Peppino_45 Start: 33030, Stop: 32125, Start Num: 27

Candidate Starts for Peppino_45:

(Start: 27 @33030 has 105 MA's), (33, 32994), (36, 32973), (54, 32862), (69, 32745), (73, 32718), (90, 32580), (95, 32532), (96, 32526), (102, 32484), (109, 32406), (110, 32403), (114, 32367), (119, 32337), (122, 32295), (123, 32220),

Gene: Pherbot_42 Start: 31735, Stop: 30917, Start Num: 6

Candidate Starts for Pherbot_42:

(Start: 6 @31735 has 10 MA's), (11, 31705), (14, 31684), (20, 31639), (23, 31609), (33, 31564), (43, 31477), (45, 31462), (73, 31447), (76, 31429), (83, 31366), (85, 31339), (88, 31324), (90, 31306), (91, 31294), (98, 31246), (106, 31201), (110, 31186), (114, 31150), (115, 31147), (116, 31135), (120, 31108), (122, 31078), (125, 30946), (127, 30922),

Gene: Pherferi_45 Start: 33084, Stop: 32278, Start Num: 27

Candidate Starts for Pherferi_45:

(Start: 27 @33084 has 105 MA's), (44, 32958), (47, 32946), (54, 32922), (95, 32679), (96, 32673), (99, 32661), (102, 32634), (110, 32553), (114, 32517), (119, 32487), (122, 32445), (123, 32370), (124, 32328),

Gene: Phiderman_47 Start: 33081, Stop: 32275, Start Num: 27

Candidate Starts for Phiderman_47:

(Start: 27 @33081 has 105 MA's), (44, 32955), (47, 32943), (54, 32919), (95, 32676), (96, 32670), (99, 32658), (102, 32631), (110, 32550), (114, 32514), (119, 32484), (122, 32442), (123, 32367), (124, 32325),

Gene: Phireproof_45 Start: 33090, Stop: 32284, Start Num: 27

Candidate Starts for Phireproof_45:

(Start: 27 @33090 has 105 MA's), (44, 32964), (47, 32952), (54, 32928), (95, 32685), (96, 32679), (99, 32667), (102, 32640), (110, 32559), (114, 32523), (119, 32493), (122, 32451), (123, 32376), (124, 32334),

Gene: PhredFlintston_45 Start: 33084, Stop: 32278, Start Num: 27

Candidate Starts for PhredFlintston_45:

(Start: 27 @33084 has 105 MA's), (44, 32958), (47, 32946), (54, 32922), (95, 32679), (96, 32673), (99, 32661), (102, 32634), (110, 32553), (114, 32517), (119, 32487), (122, 32445), (123, 32370), (124, 32328),

Gene: Phriends_45 Start: 33090, Stop: 32284, Start Num: 27

Candidate Starts for Phriends_45:

(Start: 27 @33090 has 105 MA's), (44, 32964), (47, 32952), (54, 32928), (95, 32685), (96, 32679), (99, 32667), (102, 32640), (110, 32559), (114, 32523), (119, 32493), (122, 32451), (123, 32376), (124, 32334),

Gene: Pikmin_41 Start: 31268, Stop: 30519, Start Num: 22

Candidate Starts for Pikmin_41:

(Start: 22 @31268 has 3 MA's), (24, 31250), (30, 31223), (49, 31094), (70, 31058), (82, 30959), (85, 30932), (87, 30920), (90, 30899), (92, 30884), (112, 30758), (114, 30743), (115, 30740), (116, 30728), (120, 30701), (122, 30671), (125, 30539),

Gene: Pocket_44 Start: 32813, Stop: 32007, Start Num: 27

Candidate Starts for Pocket_44:

(Start: 27 @32813 has 105 MA's), (44, 32687), (47, 32675), (54, 32651), (95, 32408), (96, 32402), (102, 32363), (110, 32282), (114, 32246), (119, 32216), (122, 32174), (124, 32057),

Gene: PrincePhergus_42 Start: 31751, Stop: 30936, Start Num: 6

Candidate Starts for PrincePhergus_42:

(Start: 6 @31751 has 10 MA's), (14, 31700), (15, 31691), (23, 31625), (43, 31493), (73, 31466), (76, 31448), (83, 31385), (85, 31358), (88, 31343), (90, 31325), (91, 31313), (98, 31265), (106, 31220), (110, 31205), (114, 31169), (115, 31166), (116, 31154), (120, 31127), (122, 31097), (125, 30965), (127, 30941),

Gene: PuppyEggo_45 Start: 33091, Stop: 32285, Start Num: 27

Candidate Starts for PuppyEggo_45:

(Start: 27 @33091 has 105 MA's), (44, 32965), (47, 32953), (54, 32929), (95, 32686), (96, 32680), (102, 32641), (110, 32560), (114, 32524), (119, 32494), (122, 32452), (123, 32377), (124, 32335),

Gene: QuadZero_43 Start: 30594, Stop: 29737, Start Num: 26

Candidate Starts for QuadZero_43:

(Start: 26 @30594 has 6 MA's), (57, 30435), (68, 30330), (71, 30315), (75, 30282), (77, 30279), (95, 30156), (96, 30150), (97, 30147), (103, 30087), (108, 30045), (109, 30030), (114, 29991), (116, 29976), (119, 29961), (121, 29934), (122, 29919), (124, 29802),

Gene: Raccoon_45 Start: 32987, Stop: 32082, Start Num: 27

Candidate Starts for Raccoon_45:

(Start: 27 @32987 has 105 MA's), (33, 32951), (36, 32930), (41, 32888), (54, 32819), (73, 32675), (90, 32537), (95, 32489), (96, 32483), (102, 32441), (109, 32363), (110, 32360), (114, 32324), (119, 32294), (122, 32252), (123, 32177),

Gene: Rapheph_45 Start: 33084, Stop: 32278, Start Num: 27

Candidate Starts for Rapheph_45:

(Start: 27 @33084 has 105 MA's), (44, 32958), (47, 32946), (54, 32922), (95, 32679), (96, 32673), (99, 32661), (102, 32634), (110, 32553), (114, 32517), (119, 32487), (122, 32445), (123, 32370), (124, 32328),

Gene: Raptor_45 Start: 33091, Stop: 32285, Start Num: 27

Candidate Starts for Raptor_45:

(Start: 27 @33091 has 105 MA's), (44, 32965), (47, 32953), (54, 32929), (95, 32686), (96, 32680), (102, 32641), (110, 32560), (114, 32524), (119, 32494), (122, 32452), (124, 32335),

Gene: Redfield_45 Start: 33038, Stop: 32133, Start Num: 27

Candidate Starts for Redfield_45:

(Start: 27 @33038 has 105 MA's), (33, 33002), (36, 32981), (41, 32939), (54, 32870), (69, 32753), (73, 32726), (90, 32588), (95, 32540), (96, 32534), (102, 32492), (109, 32414), (110, 32411), (114, 32375), (119, 32345), (122, 32303), (123, 32228),

Gene: Renzie_45 Start: 33079, Stop: 32273, Start Num: 27

Candidate Starts for Renzie_45:

(Start: 27 @33079 has 105 MA's), (44, 32953), (47, 32941), (54, 32917), (95, 32674), (96, 32668), (102, 32629), (110, 32548), (114, 32512), (119, 32482), (122, 32440), (124, 32323),

Gene: Riyhil_45 Start: 33094, Stop: 32288, Start Num: 27

Candidate Starts for Riyhil_45:

(Start: 27 @33094 has 105 MA's), (44, 32968), (47, 32956), (54, 32932), (95, 32689), (96, 32683), (102, 32644), (110, 32563), (114, 32527), (119, 32497), (122, 32455), (124, 32338),

Gene: Robinson_45 Start: 33082, Stop: 32276, Start Num: 27

Candidate Starts for Robinson_45:

(Start: 27 @33082 has 105 MA's), (44, 32956), (47, 32944), (54, 32920), (95, 32677), (96, 32671), (102, 32632), (110, 32551), (114, 32515), (119, 32485), (122, 32443), (124, 32326),

Gene: Rog141_46 Start: 32776, Stop: 31967, Start Num: 27

Candidate Starts for Rog141_46:

(Start: 27 @32776 has 105 MA's), (44, 32650), (47, 32638), (54, 32614), (67, 32503), (96, 32365), (98, 32359), (110, 32242), (114, 32206), (119, 32176), (122, 32134), (123, 32059), (124, 32017),

Gene: SJay_45 Start: 33085, Stop: 32279, Start Num: 27

Candidate Starts for SJay_45:

(Start: 27 @33085 has 105 MA's), (44, 32959), (47, 32947), (54, 32923), (95, 32680), (96, 32674), (99, 32662), (102, 32635), (110, 32554), (114, 32518), (119, 32488), (122, 32446), (123, 32371), (124, 32329),

Gene: Schimmels22_40 Start: 30924, Stop: 29851, Start Num: 1

Candidate Starts for Schimmels22_40:

(Start: 1 @30924 has 4 MA's), (3, 30900), (7, 30828), (8, 30819), (17, 30735), (18, 30729), (Start: 26 @30666 has 6 MA's), (32, 30633), (36, 30606), (47, 30522), (65, 30420), (67, 30399), (72, 30378), (85, 30264), (86, 30255), (87, 30252), (90, 30231), (91, 30219), (95, 30183), (96, 30177), (111, 30099), (114, 30072), (117, 30054), (118, 30048), (119, 30042), (121, 30015), (122, 30000), (123, 29925),

Gene: Schnapsidee_45 Start: 33045, Stop: 32140, Start Num: 27

Candidate Starts for Schnapsidee_45:

(Start: 27 @33045 has 105 MA's), (33, 33009), (36, 32988), (41, 32946), (54, 32877), (69, 32760), (73, 32733), (90, 32595), (95, 32547), (96, 32541), (102, 32499), (109, 32421), (110, 32418), (114, 32382), (119, 32352), (122, 32310), (123, 32235),

Gene: Schubert_42 Start: 31724, Stop: 30987, Start Num: 19

Candidate Starts for Schubert_42:

(Start: 19 @31724 has 1 MA's), (25, 31679), (31, 31655), (42, 31571), (81, 31451), (85, 31403), (90, 31370), (95, 31322), (96, 31316), (102, 31274), (110, 31247), (114, 31211), (117, 31193), (118, 31187), (122, 31139),

Gene: Sedgewig_44 Start: 32774, Stop: 31965, Start Num: 27

Candidate Starts for Sedgewig_44:

(Start: 27 @32774 has 105 MA's), (44, 32648), (47, 32636), (54, 32612), (67, 32501), (96, 32363), (98, 32357), (110, 32240), (114, 32204), (119, 32174), (122, 32132), (123, 32057), (124, 32015),

Gene: ShaiHulud_46 Start: 33100, Stop: 32294, Start Num: 27

Candidate Starts for ShaiHulud_46:

(Start: 27 @33100 has 105 MA's), (44, 32974), (47, 32962), (54, 32938), (95, 32695), (96, 32689), (102, 32650), (110, 32569), (114, 32533), (119, 32503), (122, 32461), (123, 32386), (124, 32344),

Gene: Shee_45 Start: 33081, Stop: 32275, Start Num: 27

Candidate Starts for Shee_45:

(Start: 27 @33081 has 105 MA's), (44, 32955), (47, 32943), (54, 32919), (95, 32676), (96, 32670), (99, 32658), (102, 32631), (110, 32550), (114, 32514), (119, 32484), (122, 32442), (123, 32367), (124, 32325),

Gene: Sinatra_43 Start: 31746, Stop: 30928, Start Num: 6

Candidate Starts for Sinatra_43:

(Start: 6 @31746 has 10 MA's), (11, 31716), (14, 31695), (20, 31650), (23, 31620), (33, 31575), (43, 31488), (45, 31473), (73, 31458), (76, 31440), (83, 31377), (85, 31350), (88, 31335), (90, 31317), (91, 31305), (98, 31257), (106, 31212), (110, 31197), (114, 31161), (115, 31158), (116, 31146), (120, 31119), (122, 31089), (125, 30957), (127, 30933),

Gene: SirVictor_43 Start: 31825, Stop: 30995, Start Num: 6

Candidate Starts for SirVictor_43:

(Start: 6 @31825 has 10 MA's), (9, 31801), (11, 31771), (14, 31750), (15, 31741), (20, 31705), (23, 31675), (43, 31543), (73, 31516), (76, 31498), (83, 31435), (85, 31408), (88, 31393), (90, 31375), (91, 31363), (95, 31327), (110, 31255), (114, 31219), (115, 31216), (116, 31204), (120, 31177), (122, 31147), (125, 31015),

Gene: SoilGremlin_46 Start: 33087, Stop: 32281, Start Num: 27

Candidate Starts for SoilGremlin_46:

(Start: 27 @33087 has 105 MA's), (44, 32961), (47, 32949), (54, 32925), (95, 32682), (96, 32676), (99, 32664), (102, 32637), (110, 32556), (114, 32520), (119, 32490), (122, 32448), (123, 32373), (124, 32331),

Gene: SonOfLevi_45 Start: 32804, Stop: 31998, Start Num: 27

Candidate Starts for SonOfLevi_45:

(Start: 27 @32804 has 105 MA's), (44, 32678), (47, 32666), (54, 32642), (95, 32399), (96, 32393), (102, 32354), (110, 32273), (114, 32237), (119, 32207), (122, 32165), (124, 32048),

Gene: Stanktossa_45 Start: 33084, Stop: 32278, Start Num: 27

Candidate Starts for Stanktossa_45:

(Start: 27 @33084 has 105 MA's), (44, 32958), (47, 32946), (54, 32922), (95, 32679), (96, 32673), (99, 32661), (102, 32634), (110, 32553), (114, 32517), (119, 32487), (122, 32445), (123, 32370), (124, 32328),

Gene: StingRay_44 Start: 32789, Stop: 31983, Start Num: 27

Candidate Starts for StingRay_44:

(Start: 27 @32789 has 105 MA's), (44, 32663), (47, 32651), (54, 32627), (95, 32384), (96, 32378), (102, 32339), (110, 32258), (114, 32222), (119, 32192), (122, 32150), (124, 32033),

Gene: StirfryIV_46 Start: 32785, Stop: 31976, Start Num: 27

Candidate Starts for StirfryIV_46:

(Start: 27 @32785 has 105 MA's), (44, 32659), (47, 32647), (54, 32623), (67, 32512), (96, 32374), (98, 32368), (110, 32251), (114, 32215), (119, 32185), (122, 32143), (123, 32068), (124, 32026),

Gene: Stormbreaker8_44 Start: 32921, Stop: 32016, Start Num: 27

Candidate Starts for Stormbreaker8_44:

(Start: 27 @32921 has 105 MA's), (36, 32864), (41, 32822), (44, 32789), (54, 32753), (73, 32609), (90, 32471), (95, 32423), (96, 32417), (103, 32354), (104, 32351), (109, 32297), (114, 32258), (119, 32228), (122, 32186),

Gene: Strathdee_45 Start: 33090, Stop: 32284, Start Num: 27

Candidate Starts for Strathdee_45:

(Start: 27 @33090 has 105 MA's), (44, 32964), (47, 32952), (54, 32928), (95, 32685), (96, 32679), (102, 32640), (110, 32559), (114, 32523), (119, 32493), (122, 32451), (123, 32376), (124, 32334),

Gene: Superfresh_45 Start: 33079, Stop: 32273, Start Num: 27

Candidate Starts for Superfresh_45:

(Start: 27 @33079 has 105 MA's), (44, 32953), (47, 32941), (54, 32917), (95, 32674), (96, 32668), (102, 32629), (110, 32548), (114, 32512), (119, 32482), (122, 32440), (124, 32323),

Gene: TatarkaPM_45 Start: 33094, Stop: 32288, Start Num: 27

Candidate Starts for TatarkaPM_45:

(Start: 27 @33094 has 105 MA's), (44, 32968), (47, 32956), (54, 32932), (95, 32689), (96, 32683), (99, 32671), (102, 32644), (110, 32563), (114, 32527), (119, 32497), (122, 32455), (123, 32380), (124, 32338),

Gene: Teagan_45 Start: 33084, Stop: 32278, Start Num: 27

Candidate Starts for Teagan_45:

(Start: 27 @33084 has 105 MA's), (44, 32958), (47, 32946), (54, 32922), (95, 32679), (96, 32673), (102, 32634), (110, 32553), (114, 32517), (119, 32487), (122, 32445), (123, 32370), (124, 32328),

Gene: TeddyBear_44 Start: 32786, Stop: 31980, Start Num: 27

Candidate Starts for TeddyBear_44:

(Start: 27 @32786 has 105 MA's), (44, 32660), (47, 32648), (54, 32624), (95, 32381), (96, 32375), (102, 32336), (110, 32255), (114, 32219), (119, 32189), (122, 32147), (124, 32030),

Gene: Tenda_44 Start: 32784, Stop: 31978, Start Num: 27

Candidate Starts for Tenda_44:

(Start: 27 @32784 has 105 MA's), (44, 32658), (47, 32646), (54, 32622), (95, 32379), (96, 32373), (102, 32334), (110, 32253), (114, 32217), (119, 32187), (122, 32145), (124, 32028),

Gene: Thompsone_45 Start: 33091, Stop: 32285, Start Num: 27

Candidate Starts for Thompsone_45:

(Start: 27 @33091 has 105 MA's), (44, 32965), (47, 32953), (54, 32929), (95, 32686), (96, 32680), (102, 32641), (110, 32560), (114, 32524), (119, 32494), (122, 32452), (123, 32377), (124, 32335),

Gene: Thorongil_45 Start: 32605, Stop: 31799, Start Num: 27

Candidate Starts for Thorongil_45:

(Start: 27 @32605 has 105 MA's), (44, 32479), (47, 32467), (54, 32443), (95, 32200), (96, 32194), (102, 32155), (110, 32074), (114, 32038), (119, 32008), (122, 31966), (123, 31891), (124, 31849),

Gene: TinSulphur_46 Start: 33090, Stop: 32284, Start Num: 27

Candidate Starts for TinSulphur_46:

(Start: 27 @33090 has 105 MA's), (44, 32964), (47, 32952), (54, 32928), (95, 32685), (96, 32679), (99, 32667), (102, 32640), (110, 32559), (114, 32523), (119, 32493), (122, 32451), (123, 32376), (124, 32334),

Gene: Tinyman4_40 Start: 30550, Stop: 29477, Start Num: 1

Candidate Starts for Tinyman4_40:

(Start: 1 @30550 has 4 MA's), (3, 30526), (7, 30454), (8, 30445), (18, 30355), (Start: 26 @30292 has 6 MA's), (32, 30259), (34, 30247), (36, 30232), (47, 30148), (65, 30046), (67, 30025), (72, 30004), (85, 29890), (86, 29881), (90, 29857), (91, 29845), (95, 29809), (96, 29803), (111, 29725), (114, 29698),

(117, 29680), (118, 29674), (119, 29668), (121, 29641), (122, 29626), (123, 29551),

Gene: Velene_45 Start: 33089, Stop: 32283, Start Num: 27

Candidate Starts for Velene_45:

(Start: 27 @33089 has 105 MA's), (44, 32963), (47, 32951), (54, 32927), (95, 32684), (96, 32678), (102, 32639), (110, 32558), (114, 32522), (119, 32492), (122, 32450), (123, 32375), (124, 32333),

Gene: Vispistious_46 Start: 33091, Stop: 32285, Start Num: 27

Candidate Starts for Vispistious_46:

(Start: 27 @33091 has 105 MA's), (44, 32965), (47, 32953), (54, 32929), (95, 32686), (96, 32680), (102, 32641), (110, 32560), (114, 32524), (119, 32494), (122, 32452), (123, 32377), (124, 32335),

Gene: WestPM_39 Start: 30694, Stop: 29621, Start Num: 1

Candidate Starts for WestPM_39:

(Start: 1 @30694 has 4 MA's), (3, 30670), (7, 30598), (8, 30589), (13, 30547), (18, 30499), (Start: 26 @30436 has 6 MA's), (32, 30403), (36, 30376), (47, 30292), (62, 30223), (65, 30190), (67, 30169), (72, 30148), (85, 30034), (86, 30025), (87, 30022), (90, 30001), (91, 29989), (95, 29953), (96, 29947), (111, 29869), (114, 29842), (117, 29824), (118, 29818), (121, 29785), (122, 29770), (123, 29695),

Gene: WildNOut_45 Start: 33087, Stop: 32281, Start Num: 27

Candidate Starts for WildNOut_45:

(Start: 27 @33087 has 105 MA's), (44, 32961), (47, 32949), (54, 32925), (95, 32682), (96, 32676), (102, 32637), (110, 32556), (114, 32520), (119, 32490), (122, 32448), (123, 32373), (124, 32331),

Gene: Winzigespinne_44 Start: 32772, Stop: 31966, Start Num: 27

Candidate Starts for Winzigespinne_44:

(Start: 27 @32772 has 105 MA's), (44, 32646), (47, 32634), (54, 32610), (95, 32367), (96, 32361), (102, 32322), (110, 32241), (114, 32205), (119, 32175), (122, 32133), (124, 32016),

Gene: Zada_46 Start: 33060, Stop: 32254, Start Num: 27

Candidate Starts for Zada_46:

(Start: 27 @33060 has 105 MA's), (44, 32934), (47, 32922), (54, 32898), (95, 32655), (96, 32649), (99, 32637), (102, 32610), (110, 32529), (114, 32493), (119, 32463), (122, 32421), (123, 32346), (124, 32304),

Gene: Zayuliv_43 Start: 31065, Stop: 30190, Start Num: 26

Candidate Starts for Zayuliv_43:

(Start: 26 @31065 has 6 MA's), (39, 30984), (59, 30885), (64, 30828), (95, 30612), (96, 30606), (97, 30603), (103, 30543), (108, 30501), (109, 30486), (114, 30447), (116, 30432), (119, 30417), (121, 30390), (122, 30375), (124, 30258),

Gene: Zepp_43 Start: 30499, Stop: 29624, Start Num: 26

Candidate Starts for Zepp_43:

(Start: 26 @30499 has 6 MA's), (39, 30418), (59, 30319), (64, 30262), (95, 30046), (96, 30040), (97, 30037), (103, 29977), (108, 29935), (109, 29920), (114, 29881), (116, 29866), (119, 29851), (121, 29824), (122, 29809), (124, 29692),