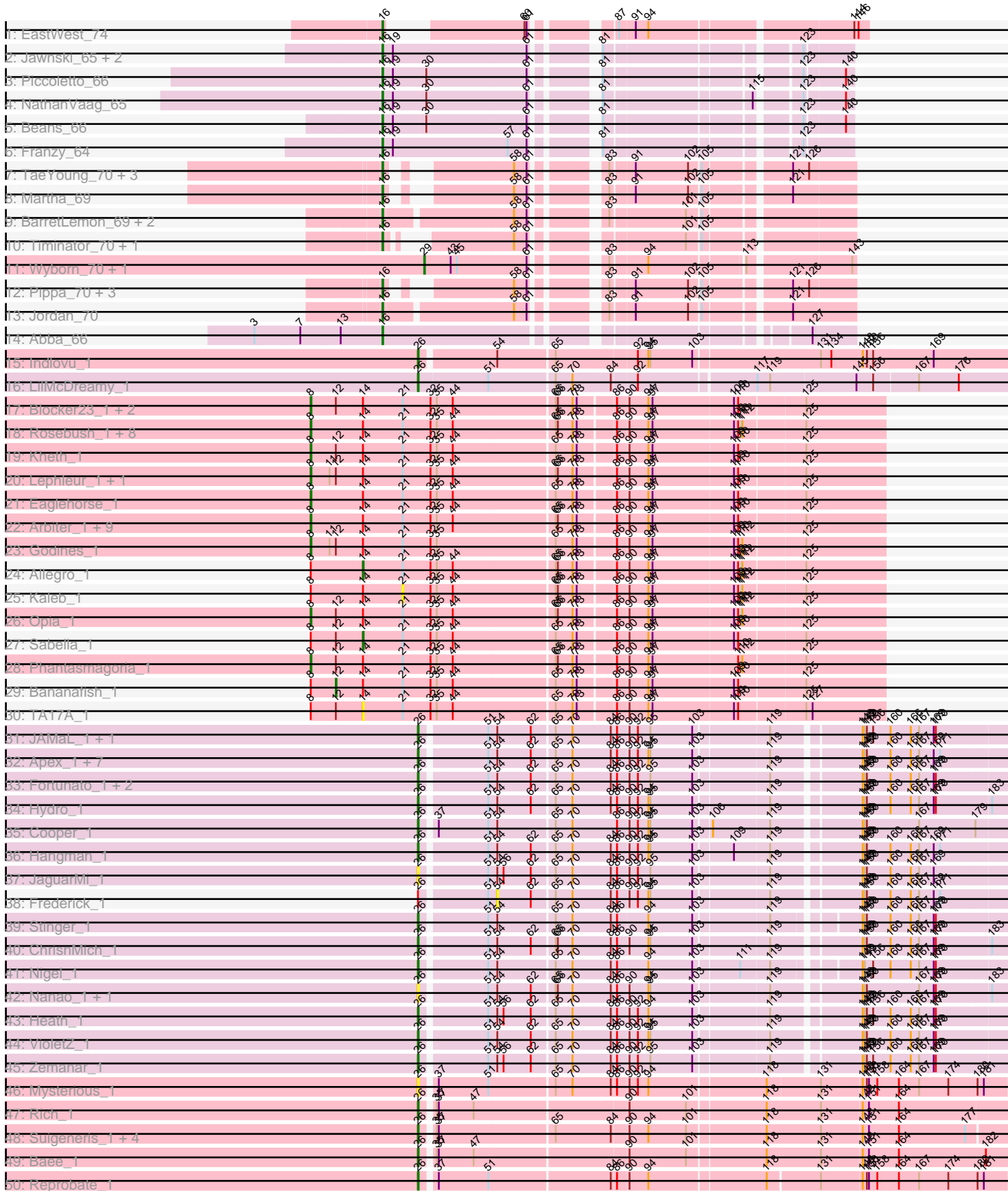
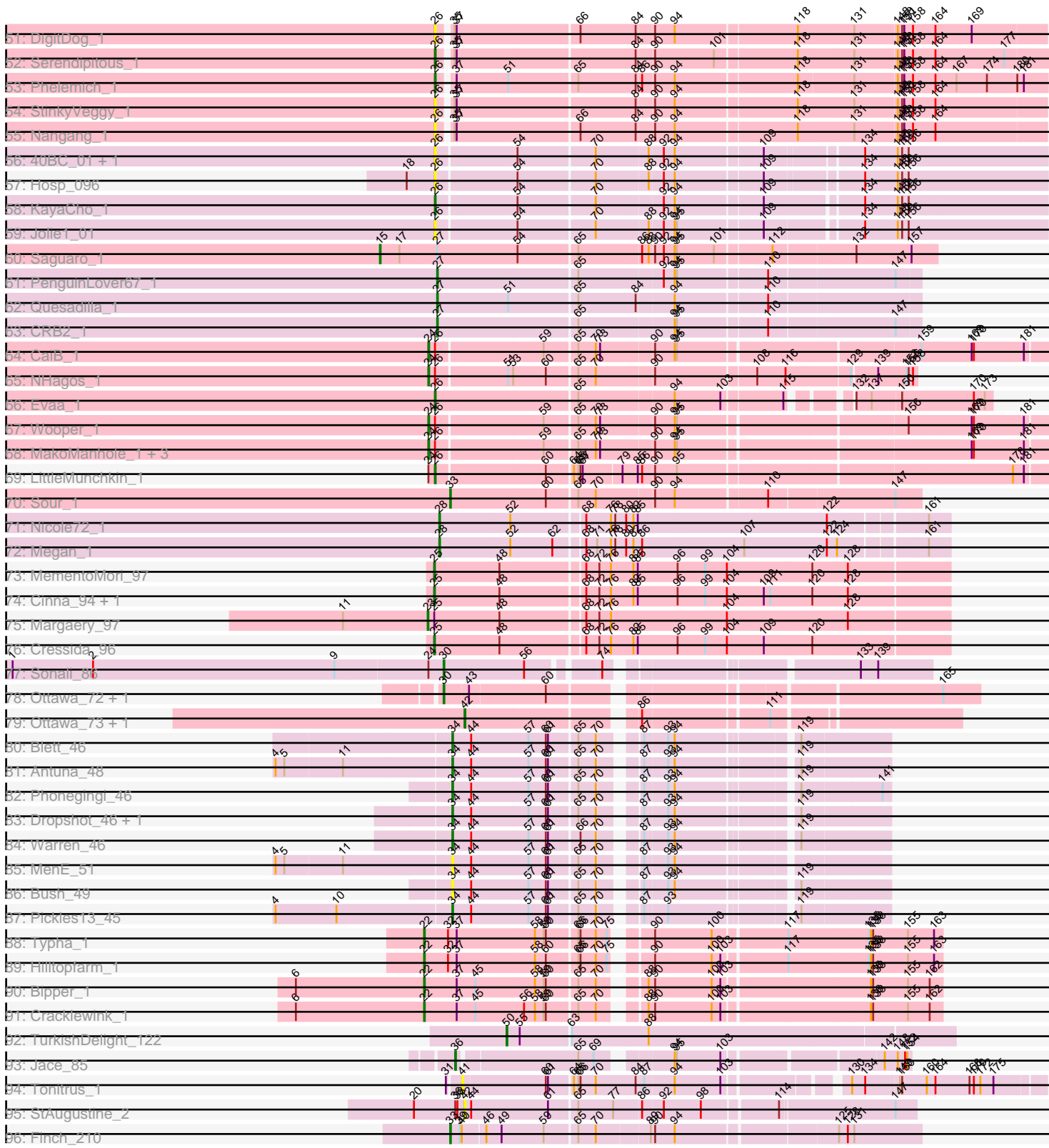


Pham 157649



Pham 157649



Note: Tracks are now grouped by subcluster and scaled. Switching in subcluster is indicated by changes in track color. Track scale is now set by default to display the region 30 bp upstream of start 1 to 30 bp downstream of the last possible start. If this default region is judged to be packed too tightly with annotated starts, the track will be further scaled to only show that region of the ORF with annotated starts. This action will be indicated by adding "Zoomed" to the title. For starts, yellow indicates the location of called starts comprised solely of Glimmer/GeneMark auto-annotations, green indicates the location of called starts with at least 1 manual gene annotation.

Pham 157649 Report

This analysis was run 04/13/24 on database version 558.

Pham number 157649 has 151 members, 24 are drafts.

Phages represented in each track:

- Track 1 : EastWest_74
- Track 2 : Jawnski_65, King2_64, Brent_66
- Track 3 : Piccoletto_66
- Track 4 : NathanVaag_65
- Track 5 : Beans_66
- Track 6 : Franzy_64
- Track 7 : TaeYoung_70, Grekaycon_70, JKerns_69, BossLady_71
- Track 8 : Martha_69
- Track 9 : BarretLemon_69, GravityBall_69, StevieBAY_70
- Track 10 : Timinator_70, LeeroyJ_70
- Track 11 : Wyborn_70, Sicarius2_71
- Track 12 : Pippa_70, Shade_69, Sonny_69, Zartrosa_71
- Track 13 : Jordan_70
- Track 14 : Abba_66
- Track 15 : Indlovu_1
- Track 16 : LilMcDreamy_1
- Track 17 : Blocker23_1, Laurie_1, Tres_1
- Track 18 : Rosebush_1, Hedgerow_1, Boyle_1, Faze9_1, Brownie5_1, FrenchFry_1, Coffee_1, Tinciduntolum_1, West99_1
- Track 19 : Kheth_1
- Track 20 : Lephleur_1, MasterPo_1
- Track 21 : Eaglehorse_1
- Track 22 : Arbiter_1, Lars_1, Ares_1, Calamitous_1, Qyrzula_1, Glass_1, Rhinoforte_1, LizLemon_1, ItsyBitsy1_1, Holeinone_1
- Track 23 : Godines_1
- Track 24 : Allegro_1
- Track 25 : Kaleb_1
- Track 26 : Opia_1
- Track 27 : Sabella_1
- Track 28 : Phantasmagoria_1
- Track 29 : Bananafish_1
- Track 30 : TA17A_1
- Track 31 : JAMaL_1, BobbyK_1
- Track 32 : Apex_1, Lolalove_1, Prince_1, Mithril_1, Waleliano_1, Mudslide_1, BrownCNA_1, Austelle_1
- Track 33 : Fortunato_1, RawrgerThat_1, Magpie_1
- Track 34 : Hydro_1

- Track 35 : Cooper_1
- Track 36 : Hangman_1
- Track 37 : JaguarMi_1
- Track 38 : Frederick_1
- Track 39 : Stinger_1
- Track 40 : ChrisnMich_1
- Track 41 : Nigel_1
- Track 42 : Nanao_1, Poster_1
- Track 43 : Heath_1
- Track 44 : VioletZ_1
- Track 45 : Zemanar_1
- Track 46 : Mysterious_1
- Track 47 : Rich_1
- Track 48 : Suigeneris_1, EastView9101_1, Acadian_1, SirJeffery_1, Donny_1
- Track 49 : Bae_1
- Track 50 : Reprobate_1
- Track 51 : DigitDog_1
- Track 52 : Serendipitous_1
- Track 53 : Phelemich_1
- Track 54 : StinkyVeggy_1
- Track 55 : Nangang_1
- Track 56 : 40BC_01, 39HC_01
- Track 57 : Hosp_096
- Track 58 : KayaCho_1
- Track 59 : Jolie1_01
- Track 60 : Saguaro_1
- Track 61 : PenguinLover67_1
- Track 62 : Quesadilla_1
- Track 63 : CRB2_1
- Track 64 : CaiB_1
- Track 65 : NHagos_1
- Track 66 : Evaa_1
- Track 67 : Wooper_1
- Track 68 : MakoManhole_1, MossRose_1, CloverMinnie_1, AnarQue_1
- Track 69 : LittleMunchkin_1
- Track 70 : Sour_1
- Track 71 : Nicole72_1
- Track 72 : Megan_1
- Track 73 : MementoMori_97
- Track 74 : Cinna_94, Matzah_98
- Track 75 : Margaery_97
- Track 76 : Cressida_96
- Track 77 : Sonali_86
- Track 78 : Ottawa_72, Kharcho_72
- Track 79 : Ottawa_73, Kharcho_73
- Track 80 : Blett_46
- Track 81 : Antuna_48
- Track 82 : Phonegingi_46
- Track 83 : Dropshot_46, Appa_46
- Track 84 : Warren_46
- Track 85 : MenE_51
- Track 86 : Bush_49
- Track 87 : Pickles13_45

- Track 88 : Typha_1
- Track 89 : Hilltopfarm_1
- Track 90 : Bipper_1
- Track 91 : Cracklewink_1
- Track 92 : TurkishDelight_122
- Track 93 : Jace_85
- Track 94 : Tonitrus_1
- Track 95 : StAugustine_2
- Track 96 : Finch_210

Summary of Final Annotations (See graph section above for start numbers):

The start number called the most often in the published annotations is 26, it was called in 33 of the 127 non-draft genes in the pham.

Genes that call this "Most Annotated" start:

- 39HC_01, 40BC_01, Acadian_1, Apex_1, Austelle_1, Bae_1, BobbyK_1, BrownCNA_1, ChrisnMich_1, Cooper_1, DigitDog_1, Donny_1, EastView9101_1, Evaa_1, Fortunato_1, Hangman_1, Heath_1, Hosp_096, Hydro_1, Indlovu_1, JAMaL_1, JaguarMi_1, Jolie1_01, KayaCho_1, LilMcDreamy_1, LittleMunchkin_1, Lolalove_1, Magpie_1, Mithril_1, Mudslide_1, Mysterious_1, Nanao_1, Nangang_1, Nigel_1, Phelemich_1, Poster_1, Prince_1, RawrgerThat_1, Reprobate_1, Rich_1, Serendipitous_1, SirJeffery_1, Stinger_1, StinkyVeggy_1, Suigeneris_1, VioletZ_1, Waleliano_1, Zemanar_1,

Genes that have the "Most Annotated" start but do not call it:

- AnarQue_1, CaiB_1, CloverMinnie_1, Frederick_1, MakoManhole_1, MossRose_1, NHagos_1, Wooper_1,

Genes that do not have the "Most Annotated" start:

- Abba_66, Allegro_1, Antuna_48, Appa_46, Arbiter_1, Ares_1, Bananafish_1, BarretLemon_69, Beans_66, Bipper_1, Blett_46, Blocker23_1, BossLady_71, Boyle_1, Brent_66, Brownie5_1, Bush_49, CRB2_1, Calamitous_1, Cinna_94, Coffee_1, Cracklewink_1, Cressida_96, Dropshot_46, Eaglehorse_1, EastWest_74, Faze9_1, Finch_210, Franzy_64, FrenchFry_1, Glass_1, Godines_1, GravityBall_69, Grekaycon_70, Hedgerow_1, Hilltopfarm_1, Holeinone_1, ItsyBitsy1_1, JKerns_69, Jace_85, Jawnski_65, Jordan_70, Kaleb_1, Kharcho_72, Kharcho_73, Kheth_1, King2_64, Lars_1, Laurie_1, LeeroyJ_70, Lephleur_1, LizLemon_1, Margaery_97, Martha_69, MasterPo_1, Matzah_98, Megan_1, MementoMori_97, MenE_51, NathanVaag_65, Nicole72_1, Opia_1, Ottawa_72, Ottawa_73, PenguinLover67_1, Phantasmagoria_1, Phonegingi_46, Piccoletto_66, Pickles13_45, Pippa_70, Quesadilla_1, Qyrzula_1, Rhinoforte_1, Rosebush_1, Sabella_1, Saguaro_1, Shade_69, Sicarius2_71, Sonali_86, Sonny_69, Sour_1, StAugustine_2, StevieBAY_70, TA17A_1, TaeYoung_70, Timinator_70, Tinciduntolum_1, Tonitrus_1, Tres_1, TurkishDelight_122, Typha_1, Warren_46, West99_1, Wyborn_70, Zartrosa_71,

Summary by start number:

Start 8:

- Found in 34 of 151 (22.5%) of genes in pham
- Manual Annotations of this start: 29 of 127
- Called 85.3% of time when present
- Phage (with cluster) where this start called: Arbiter_1 (B2), Ares_1 (B2), Blocker23_1 (B2), Boyle_1 (B2), Brownie5_1 (B2), Calamitous_1 (B2), Coffee_1 (B2), Eaglehorse_1 (B2), Faze9_1 (B2), FrenchFry_1 (B2), Glass_1 (B2), Godines_1 (B2), Hedgerow_1 (B2), Holeinone_1 (B2), ItsyBitsy1_1 (B2), Kheth_1 (B2), Lars_1 (B2), Laurie_1 (B2), Lephleur_1 (B2), LizLemon_1 (B2), MasterPo_1 (B2), Opia_1 (B2), Phantasmagoria_1 (B2), Qyrzula_1 (B2), Rhinoforte_1 (B2), Rosebush_1 (B2), Tinciduntolum_1 (B2), Tres_1 (B2), West99_1 (B2),

Start 12:

- Found in 12 of 151 (7.9%) of genes in pham
- Manual Annotations of this start: 1 of 127
- Called 8.3% of time when present
- Phage (with cluster) where this start called: Bananafish_1 (B2),

Start 14:

- Found in 34 of 151 (22.5%) of genes in pham
- Manual Annotations of this start: 2 of 127
- Called 8.8% of time when present
- Phage (with cluster) where this start called: Allegro_1 (B2), Sabella_1 (B2), TA17A_1 (B2),

Start 15:

- Found in 1 of 151 (0.7%) of genes in pham
- Manual Annotations of this start: 1 of 127
- Called 100.0% of time when present
- Phage (with cluster) where this start called: Saguaro_1 (B7),

Start 16:

- Found in 24 of 151 (15.9%) of genes in pham
- Manual Annotations of this start: 23 of 127
- Called 100.0% of time when present
- Phage (with cluster) where this start called: Abba_66 (AO3), BarretLemon_69 (AO2), Beans_66 (AO1), BossLady_71 (AO2), Brent_66 (AO1), EastWest_74 (AO), Franzy_64 (AO1), GravityBall_69 (AO2), Grekaycon_70 (AO2), JKerns_69 (AO2), Jawnski_65 (AO1), Jordan_70 (AO2), King2_64 (AO1), LeeroyJ_70 (AO2), Martha_69 (AO2), NathanVaag_65 (AO1), Piccoletto_66 (AO1), Pippa_70 (AO2), Shade_69 (AO2), Sonny_69 (AO2), StevieBAY_70 (AO2), TaeYoung_70 (AO2), Timinator_70 (AO2), Zartrosa_71 (AO2),

Start 21:

- Found in 34 of 151 (22.5%) of genes in pham
- No Manual Annotations of this start.
- Called 2.9% of time when present
- Phage (with cluster) where this start called: Kaleb_1 (B2),

Start 22:

- Found in 4 of 151 (2.6%) of genes in pham
- Manual Annotations of this start: 4 of 127
- Called 100.0% of time when present

- Phage (with cluster) where this start called: Bipper_1 (Y), Cracklewink_1 (Y), Hilltopfarm_1 (Y), Typha_1 (Y),

Start 23:

- Found in 1 of 151 (0.7%) of genes in pham
- Manual Annotations of this start: 1 of 127
- Called 100.0% of time when present
- Phage (with cluster) where this start called: Margaery_97 (EI),

Start 24:

- Found in 9 of 151 (6.0%) of genes in pham
- Manual Annotations of this start: 6 of 127
- Called 77.8% of time when present
- Phage (with cluster) where this start called: AnarQue_1 (DR), CaiB_1 (DR), CloverMinnie_1 (DR), MakoManhole_1 (DR), MossRose_1 (DR), NHagos_1 (DR), Wooper_1 (DR),

Start 25:

- Found in 5 of 151 (3.3%) of genes in pham
- Manual Annotations of this start: 4 of 127
- Called 80.0% of time when present
- Phage (with cluster) where this start called: Cinna_94 (EI), Cressida_96 (EI), Matzah_98 (EI), MementoMori_97 (EI),

Start 26:

- Found in 56 of 151 (37.1%) of genes in pham
- Manual Annotations of this start: 33 of 127
- Called 85.7% of time when present
- Phage (with cluster) where this start called: 39HC_01 (B6), 40BC_01 (B6), Acadian_1 (B5), Apex_1 (B4), Austelle_1 (B4), Bae_1 (B5), BobbyK_1 (B4), BrownCNA_1 (B4), ChrisnMich_1 (B4), Cooper_1 (B4), DigitDog_1 (B5), Donny_1 (B5), EastView9101_1 (B5), Evaa_1 (DR), Fortunato_1 (B4), Hangman_1 (B4), Heath_1 (B4), Hosp_096 (B6), Hydro_1 (B4), Indlovu_1 (B11), JAMaL_1 (B4), JaguarMi_1 (B4), Jolie1_01 (B6), KayaCho_1 (B6), LilMcDreamy_1 (B12), LittleMunchkin_1 (DR), Lolalove_1 (B4), Magpie_1 (B4), Mithril_1 (B4), Mudslide_1 (B4), Mysterious_1 (B5), Nanao_1 (B4), Nangang_1 (B5), Nigel_1 (B4), Phelemich_1 (B5), Poster_1 (B4), Prince_1 (B4), RawrgerThat_1 (B4), Reprobate_1 (B5), Rich_1 (B5), Serendipitous_1 (B5), SirJeffery_1 (B5), Stinger_1 (B4), StinkyVeggy_1 (B5), Suigeneris_1 (B5), VioletZ_1 (B4), Waleliano_1 (B4), Zemanar_1 (B4),

Start 27:

- Found in 4 of 151 (2.6%) of genes in pham
- Manual Annotations of this start: 3 of 127
- Called 75.0% of time when present
- Phage (with cluster) where this start called: CRB2_1 (B9), PenguinLover67_1 (B9), Quesadilla_1 (B9),

Start 28:

- Found in 2 of 151 (1.3%) of genes in pham
- Manual Annotations of this start: 2 of 127
- Called 100.0% of time when present
- Phage (with cluster) where this start called: Megan_1 (EC), Nicole72_1 (EC),

Start 29:

- Found in 2 of 151 (1.3%) of genes in pham
- Manual Annotations of this start: 2 of 127
- Called 100.0% of time when present
- Phage (with cluster) where this start called: Sicarius2_71 (AO2), Wyborn_70 (AO2),

Start 30:

- Found in 6 of 151 (4.0%) of genes in pham
- Manual Annotations of this start: 3 of 127
- Called 50.0% of time when present
- Phage (with cluster) where this start called: Kharcho_72 (FM), Ottawa_72 (FM), Sonali_86 (FG),

Start 33:

- Found in 2 of 151 (1.3%) of genes in pham
- Manual Annotations of this start: 2 of 127
- Called 100.0% of time when present
- Phage (with cluster) where this start called: Finch_210 (singleton), Sour_1 (DR),

Start 34:

- Found in 9 of 151 (6.0%) of genes in pham
- Manual Annotations of this start: 7 of 127
- Called 100.0% of time when present
- Phage (with cluster) where this start called: Antuna_48 (GA), Appa_46 (GA), Blett_46 (GA), Bush_49 (GA), Dropshot_46 (GA), MenE_51 (GA), Phonegingi_46 (GA), Pickles13_45 (GA), Warren_46 (GA),

Start 36:

- Found in 2 of 151 (1.3%) of genes in pham
- Manual Annotations of this start: 1 of 127
- Called 50.0% of time when present
- Phage (with cluster) where this start called: Jace_85 (singleton),

Start 41:

- Found in 1 of 151 (0.7%) of genes in pham
- No Manual Annotations of this start.
- Called 100.0% of time when present
- Phage (with cluster) where this start called: Tonitrus_1 (singleton),

Start 42:

- Found in 3 of 151 (2.0%) of genes in pham
- Manual Annotations of this start: 2 of 127
- Called 100.0% of time when present
- Phage (with cluster) where this start called: Kharcho_73 (FM), Ottawa_73 (FM), StAugustine_2 (singleton),

Start 50:

- Found in 1 of 151 (0.7%) of genes in pham
- Manual Annotations of this start: 1 of 127
- Called 100.0% of time when present
- Phage (with cluster) where this start called: TurkishDelight_122 (singleton),

Start 54:

- Found in 33 of 151 (21.9%) of genes in pham
- No Manual Annotations of this start.
- Called 3.0% of time when present
- Phage (with cluster) where this start called: Frederick_1 (B4),

Summary by clusters:

There are 20 clusters represented in this pham: EC, singleton, EI, B2, DR, FG, AO, B9, B4, B5, B6, B7, B12, AO2, AO1, B11, Y, AO3, GA, FM,

Info for manual annotations of cluster AO:

- Start number 16 was manually annotated 1 time for cluster AO.

Info for manual annotations of cluster AO1:

- Start number 16 was manually annotated 7 times for cluster AO1.

Info for manual annotations of cluster AO2:

- Start number 16 was manually annotated 14 times for cluster AO2.
- Start number 29 was manually annotated 2 times for cluster AO2.

Info for manual annotations of cluster AO3:

- Start number 16 was manually annotated 1 time for cluster AO3.

Info for manual annotations of cluster B11:

- Start number 26 was manually annotated 1 time for cluster B11.

Info for manual annotations of cluster B12:

- Start number 26 was manually annotated 1 time for cluster B12.

Info for manual annotations of cluster B2:

- Start number 8 was manually annotated 29 times for cluster B2.
- Start number 12 was manually annotated 1 time for cluster B2.
- Start number 14 was manually annotated 2 times for cluster B2.

Info for manual annotations of cluster B4:

- Start number 26 was manually annotated 20 times for cluster B4.

Info for manual annotations of cluster B5:

- Start number 26 was manually annotated 8 times for cluster B5.

Info for manual annotations of cluster B6:

- Start number 26 was manually annotated 1 time for cluster B6.

Info for manual annotations of cluster B7:

- Start number 15 was manually annotated 1 time for cluster B7.

Info for manual annotations of cluster B9:

- Start number 27 was manually annotated 3 times for cluster B9.

Info for manual annotations of cluster DR:

- Start number 24 was manually annotated 6 times for cluster DR.
- Start number 26 was manually annotated 2 times for cluster DR.
- Start number 33 was manually annotated 1 time for cluster DR.

Info for manual annotations of cluster EC:

- Start number 28 was manually annotated 2 times for cluster EC.

Info for manual annotations of cluster EI:

- Start number 23 was manually annotated 1 time for cluster EI.
- Start number 25 was manually annotated 4 times for cluster EI.

Info for manual annotations of cluster FG:

- Start number 30 was manually annotated 1 time for cluster FG.

Info for manual annotations of cluster FM:

- Start number 30 was manually annotated 2 times for cluster FM.
- Start number 42 was manually annotated 2 times for cluster FM.

Info for manual annotations of cluster GA:

- Start number 34 was manually annotated 7 times for cluster GA.

Info for manual annotations of cluster Y:

- Start number 22 was manually annotated 4 times for cluster Y.

Gene Information:

Gene: 39HC_01 Start: 1, Stop: 810, Start Num: 26

Candidate Starts for 39HC_01:

(Start: 26 @1 has 33 MA's), (54, 106), (70, 208), (88, 277), (92, 295), (94, 310), (109, 424), (134, 541), (148, 586), (150, 592), (156, 601),

Gene: 40BC_01 Start: 1, Stop: 810, Start Num: 26

Candidate Starts for 40BC_01:

(Start: 26 @1 has 33 MA's), (54, 106), (70, 208), (88, 277), (92, 295), (94, 310), (109, 424), (134, 541), (148, 586), (150, 592), (156, 601),

Gene: Abba_66 Start: 41901, Stop: 42479, Start Num: 16

Candidate Starts for Abba_66:

(3, 41721), (7, 41784), (13, 41841), (Start: 16 @41901 has 23 MA's), (127, 42423),

Gene: Acadian_1 Start: 1, Stop: 816, Start Num: 26

Candidate Starts for Acadian_1:

(Start: 26 @1 has 33 MA's), (35, 16), (37, 19), (65, 178), (84, 256), (90, 277), (94, 304), (101, 358), (118, 463), (131, 538), (148, 595), (151, 604), (164, 646), (177, 739),

Gene: Allegro_1 Start: 76, Stop: 792, Start Num: 14

Candidate Starts for Allegro_1:

(Start: 8 @1 has 29 MA's), (Start: 14 @76 has 2 MA's), (21, 133), (32, 172), (35, 181), (44, 202), (65, 343), (66, 346), (70, 367), (73, 373), (86, 421), (90, 436), (94, 463), (97, 469), (109, 583), (110, 589), (111, 592), (112, 595), (125, 679),

Gene: AnarQue_1 Start: 1, Stop: 804, Start Num: 24

Candidate Starts for AnarQue_1:

(Start: 24 @1 has 6 MA's), (Start: 26 @10 has 33 MA's), (59, 151), (65, 193), (70, 217), (73, 223), (90, 292), (94, 319), (95, 322), (169, 703), (170, 706), (181, 775),

Gene: Antuna_48 Start: 29370, Stop: 29903, Start Num: 34

Candidate Starts for Antuna_48:

(4, 29136), (5, 29148), (11, 29226), (Start: 34 @29370 has 7 MA's), (44, 29394), (57, 29472), (60, 29496), (61, 29499), (65, 29535), (70, 29559), (87, 29598), (93, 29628), (94, 29637), (119, 29784),

Gene: Apex_1 Start: 1, Stop: 798, Start Num: 26

Candidate Starts for Apex_1:

(Start: 26 @1 has 33 MA's), (51, 88), (54, 100), (62, 148), (65, 178), (70, 202), (84, 256), (86, 262), (90, 277), (92, 289), (94, 304), (95, 307), (103, 367), (119, 466), (148, 577), (149, 580), (150, 583), (160, 616), (166, 643), (167, 655), (169, 676), (171, 685),

Gene: Appa_46 Start: 29135, Stop: 29668, Start Num: 34

Candidate Starts for Appa_46:

(Start: 34 @29135 has 7 MA's), (44, 29159), (57, 29237), (60, 29261), (61, 29264), (65, 29300), (70, 29324), (87, 29363), (93, 29393), (94, 29402), (119, 29549),

Gene: Arbiter_1 Start: 1, Stop: 792, Start Num: 8

Candidate Starts for Arbiter_1:

(Start: 8 @1 has 29 MA's), (Start: 14 @76 has 2 MA's), (21, 133), (32, 172), (35, 181), (44, 202), (65, 343), (66, 346), (70, 367), (73, 373), (86, 421), (90, 436), (94, 463), (97, 469), (109, 583), (110, 589), (125, 679),

Gene: Ares_1 Start: 1, Stop: 792, Start Num: 8

Candidate Starts for Ares_1:

(Start: 8 @1 has 29 MA's), (Start: 14 @76 has 2 MA's), (21, 133), (32, 172), (35, 181), (44, 202), (65, 343), (66, 346), (70, 367), (73, 373), (86, 421), (90, 436), (94, 463), (97, 469), (109, 583), (110, 589), (125, 679),

Gene: Austelle_1 Start: 1, Stop: 798, Start Num: 26

Candidate Starts for Austelle_1:

(Start: 26 @1 has 33 MA's), (51, 88), (54, 100), (62, 148), (65, 178), (70, 202), (84, 256), (86, 262), (90, 277), (92, 289), (94, 304), (95, 307), (103, 367), (119, 466), (148, 577), (149, 580), (150, 583), (160, 616), (166, 643), (167, 655), (169, 676), (171, 685),

Gene: Bae_1 Start: 1, Stop: 822, Start Num: 26

Candidate Starts for Bae_1:

(Start: 26 @1 has 33 MA's), (35, 16), (37, 19), (47, 67), (90, 277), (101, 358), (118, 463), (131, 538), (148, 595), (151, 604), (164, 646), (182, 769),

Gene: Bananafish_1 Start: 37, Stop: 792, Start Num: 12

Candidate Starts for Bananafish_1:

(Start: 8 @1 has 29 MA's), (Start: 12 @37 has 1 MA's), (Start: 14 @76 has 2 MA's), (21, 133), (32, 172), (35, 181), (44, 202), (65, 343), (70, 367), (73, 373), (86, 421), (90, 436), (94, 463), (97, 469), (109, 583), (110, 589), (125, 679),

Gene: BarretLemon_69 Start: 44545, Stop: 45120, Start Num: 16

Candidate Starts for BarretLemon_69:

(Start: 16 @44545 has 23 MA's), (58, 44716), (61, 44734), (83, 44809), (101, 44911), (105, 44929),

Gene: Beans_66 Start: 44464, Stop: 45042, Start Num: 16

Candidate Starts for Beans_66:

(Start: 16 @44464 has 23 MA's), (19, 44479), (Start: 30 @44527 has 3 MA's), (61, 44668), (81, 44737), (123, 44980), (140, 45031),

Gene: Bipper_1 Start: 202, Stop: 861, Start Num: 22

Candidate Starts for Bipper_1:

(6, 25), (Start: 22 @202 has 4 MA's), (37, 247), (45, 271), (58, 352), (59, 364), (60, 367), (65, 406), (70, 430), (88, 472), (90, 481), (100, 559), (103, 571), (136, 763), (138, 766), (155, 814), (162, 844),

Gene: Blett_46 Start: 29321, Stop: 29854, Start Num: 34

Candidate Starts for Blett_46:

(Start: 34 @29321 has 7 MA's), (44, 29345), (57, 29423), (60, 29447), (61, 29450), (65, 29486), (70, 29510), (87, 29549), (93, 29579), (94, 29588), (119, 29735),

Gene: Blocker23_1 Start: 1, Stop: 792, Start Num: 8

Candidate Starts for Blocker23_1:

(Start: 8 @1 has 29 MA's), (Start: 12 @37 has 1 MA's), (Start: 14 @76 has 2 MA's), (21, 133), (32, 172), (35, 181), (44, 202), (65, 343), (66, 346), (70, 367), (73, 373), (86, 421), (90, 436), (94, 463), (97, 469), (109, 583), (110, 589), (125, 679),

Gene: BobbyK_1 Start: 1, Stop: 798, Start Num: 26

Candidate Starts for BobbyK_1:

(Start: 26 @1 has 33 MA's), (51, 88), (54, 100), (62, 148), (65, 178), (70, 202), (84, 256), (86, 262), (90, 277), (92, 289), (95, 307), (103, 367), (119, 466), (148, 577), (149, 580), (150, 583), (156, 592), (160, 616), (166, 643), (167, 655), (169, 676), (170, 679),

Gene: BossLady_71 Start: 45159, Stop: 45689, Start Num: 16

Candidate Starts for BossLady_71:

(Start: 16 @45159 has 23 MA's), (58, 45285), (61, 45303), (83, 45378), (91, 45408), (102, 45483), (105, 45498), (121, 45606), (126, 45627),

Gene: Boyle_1 Start: 1, Stop: 792, Start Num: 8

Candidate Starts for Boyle_1:

(Start: 8 @1 has 29 MA's), (Start: 14 @76 has 2 MA's), (21, 133), (32, 172), (35, 181), (44, 202), (65, 343), (66, 346), (70, 367), (73, 373), (86, 421), (90, 436), (94, 463), (97, 469), (109, 583), (110, 589), (111, 592), (112, 595), (125, 679),

Gene: Brent_66 Start: 44549, Stop: 45127, Start Num: 16

Candidate Starts for Brent_66:

(Start: 16 @44549 has 23 MA's), (19, 44564), (61, 44753), (81, 44822), (123, 45065),

Gene: BrownCNA_1 Start: 1, Stop: 798, Start Num: 26

Candidate Starts for BrownCNA_1:

(Start: 26 @1 has 33 MA's), (51, 88), (54, 100), (62, 148), (65, 178), (70, 202), (84, 256), (86, 262), (90, 277), (92, 289), (94, 304), (95, 307), (103, 367), (119, 466), (148, 577), (149, 580), (150, 583), (160, 616), (166, 643), (167, 655), (169, 676), (171, 685),

Gene: Brownie5_1 Start: 1, Stop: 792, Start Num: 8

Candidate Starts for Brownie5_1:

(Start: 8 @1 has 29 MA's), (Start: 14 @76 has 2 MA's), (21, 133), (32, 172), (35, 181), (44, 202), (65, 343), (66, 346), (70, 367), (73, 373), (86, 421), (90, 436), (94, 463), (97, 469), (109, 583), (110, 589), (111, 592), (112, 595), (125, 679),

Gene: Bush_49 Start: 29269, Stop: 29802, Start Num: 34

Candidate Starts for Bush_49:

(Start: 34 @29269 has 7 MA's), (44, 29293), (57, 29371), (60, 29395), (61, 29398), (65, 29434), (70, 29458), (87, 29497), (93, 29527), (94, 29536), (119, 29683),

Gene: CRB2_1 Start: 1, Stop: 633, Start Num: 27

Candidate Starts for CRB2_1:

(Start: 27 @1 has 3 MA's), (65, 187), (94, 313), (95, 316), (110, 433), (147, 601),

Gene: CaiB_1 Start: 1, Stop: 804, Start Num: 24

Candidate Starts for CaiB_1:

(Start: 24 @1 has 6 MA's), (Start: 26 @10 has 33 MA's), (59, 151), (65, 193), (70, 217), (73, 223), (90, 292), (94, 319), (95, 322), (159, 637), (169, 703), (170, 706), (181, 775),

Gene: Calamitous_1 Start: 1, Stop: 792, Start Num: 8

Candidate Starts for Calamitous_1:

(Start: 8 @1 has 29 MA's), (Start: 14 @76 has 2 MA's), (21, 133), (32, 172), (35, 181), (44, 202), (65, 343), (66, 346), (70, 367), (73, 373), (86, 421), (90, 436), (94, 463), (97, 469), (109, 583), (110, 589), (125, 679),

Gene: ChrisnMich_1 Start: 1, Stop: 798, Start Num: 26

Candidate Starts for ChrisnMich_1:

(Start: 26 @1 has 33 MA's), (51, 88), (54, 100), (62, 148), (65, 178), (66, 181), (70, 202), (84, 256), (86, 262), (90, 277), (94, 304), (95, 307), (103, 367), (119, 466), (148, 577), (149, 580), (150, 583), (160, 616), (166, 643), (167, 655), (169, 676), (170, 679), (183, 754),

Gene: Cinna_94 Start: 54580, Stop: 55263, Start Num: 25

Candidate Starts for Cinna_94:

(Start: 25 @54580 has 4 MA's), (48, 54667), (68, 54775), (72, 54793), (76, 54808), (82, 54838), (85, 54844), (96, 54898), (99, 54934), (104, 54964), (109, 55015), (111, 55024), (120, 55081), (128, 55129),

Gene: CloverMinnie_1 Start: 1, Stop: 804, Start Num: 24

Candidate Starts for CloverMinnie_1:

(Start: 24 @1 has 6 MA's), (Start: 26 @10 has 33 MA's), (59, 151), (65, 193), (70, 217), (73, 223), (90, 292), (94, 319), (95, 322), (169, 703), (170, 706), (181, 775),

Gene: Coffee_1 Start: 1, Stop: 792, Start Num: 8

Candidate Starts for Coffee_1:

(Start: 8 @1 has 29 MA's), (Start: 14 @76 has 2 MA's), (21, 133), (32, 172), (35, 181), (44, 202), (65, 343), (66, 346), (70, 367), (73, 373), (86, 421), (90, 436), (94, 463), (97, 469), (109, 583), (110, 589), (111, 592), (112, 595), (125, 679),

Gene: Cooper_1 Start: 1, Stop: 798, Start Num: 26

Candidate Starts for Cooper_1:

(Start: 26 @1 has 33 MA's), (37, 19), (51, 88), (54, 100), (65, 178), (70, 202), (86, 262), (90, 277), (92, 289), (94, 304), (95, 307), (103, 367), (106, 388), (119, 466), (148, 577), (149, 580), (150, 583), (167, 655), (179, 733),

Gene: Cracklewink_1 Start: 202, Stop: 861, Start Num: 22

Candidate Starts for Cracklewink_1:

(6, 25), (Start: 22 @202 has 4 MA's), (37, 247), (45, 271), (56, 337), (58, 352), (59, 364), (60, 367), (65, 406), (70, 430), (88, 472), (90, 481), (100, 559), (103, 571), (136, 763), (138, 766), (155, 814),

(162, 844),

Gene: Cressida_96 Start: 55174, Stop: 55857, Start Num: 25

Candidate Starts for Cressida_96:

(Start: 25 @55174 has 4 MA's), (48, 55261), (68, 55369), (72, 55387), (76, 55402), (82, 55432), (85, 55438), (96, 55492), (99, 55528), (104, 55558), (109, 55609), (120, 55675),

Gene: DigitDog_1 Start: 1, Stop: 807, Start Num: 26

Candidate Starts for DigitDog_1:

(Start: 26 @1 has 33 MA's), (35, 16), (37, 19), (66, 181), (84, 256), (90, 277), (94, 304), (118, 463), (131, 538), (148, 595), (150, 601), (151, 604), (158, 616), (164, 646), (169, 694),

Gene: Donny_1 Start: 1, Stop: 816, Start Num: 26

Candidate Starts for Donny_1:

(Start: 26 @1 has 33 MA's), (35, 16), (37, 19), (65, 178), (84, 256), (90, 277), (94, 304), (101, 358), (118, 463), (131, 538), (148, 595), (151, 604), (164, 646), (177, 739),

Gene: Dropshot_46 Start: 28970, Stop: 29503, Start Num: 34

Candidate Starts for Dropshot_46:

(Start: 34 @28970 has 7 MA's), (44, 28994), (57, 29072), (60, 29096), (61, 29099), (65, 29135), (70, 29159), (87, 29198), (93, 29228), (94, 29237), (119, 29384),

Gene: Eaglehorse_1 Start: 1, Stop: 792, Start Num: 8

Candidate Starts for Eaglehorse_1:

(Start: 8 @1 has 29 MA's), (Start: 14 @76 has 2 MA's), (21, 133), (32, 172), (35, 181), (44, 202), (65, 343), (70, 367), (73, 373), (86, 421), (90, 436), (94, 463), (97, 469), (109, 583), (110, 589), (125, 679),

Gene: EastView9101_1 Start: 1, Stop: 816, Start Num: 26

Candidate Starts for EastView9101_1:

(Start: 26 @1 has 33 MA's), (35, 16), (37, 19), (65, 178), (84, 256), (90, 277), (94, 304), (101, 358), (118, 463), (131, 538), (148, 595), (151, 604), (164, 646), (177, 739),

Gene: EastWest_74 Start: 43726, Stop: 44280, Start Num: 16

Candidate Starts for EastWest_74:

(Start: 16 @43726 has 23 MA's), (60, 43861), (61, 43864), (87, 43951), (91, 43972), (94, 43990), (144, 44260), (146, 44266),

Gene: Evaa_1 Start: 1, Stop: 699, Start Num: 26

Candidate Starts for Evaa_1:

(Start: 26 @1 has 33 MA's), (65, 190), (94, 316), (103, 379), (115, 457), (132, 517), (137, 538), (150, 577), (170, 676), (173, 691),

Gene: Faze9_1 Start: 1, Stop: 792, Start Num: 8

Candidate Starts for Faze9_1:

(Start: 8 @1 has 29 MA's), (Start: 14 @76 has 2 MA's), (21, 133), (32, 172), (35, 181), (44, 202), (65, 343), (66, 346), (70, 367), (73, 373), (86, 421), (90, 436), (94, 463), (97, 469), (109, 583), (110, 589), (111, 592), (112, 595), (125, 679),

Gene: Finch_210 Start: 122277, Stop: 122888, Start Num: 33

Candidate Starts for Finch_210:

(Start: 33 @122277 has 2 MA's), (39, 122289), (40, 122292), (46, 122322), (49, 122343), (59, 122400), (65, 122442), (70, 122466), (89, 122535), (90, 122541), (94, 122568), (125, 122775), (128, 122787), (131, 122796),

Gene: Fortunato_1 Start: 1, Stop: 798, Start Num: 26

Candidate Starts for Fortunato_1:

(Start: 26 @1 has 33 MA's), (51, 88), (54, 100), (62, 148), (65, 178), (70, 202), (84, 256), (86, 262), (90, 277), (92, 289), (95, 307), (103, 367), (119, 466), (148, 577), (149, 580), (150, 583), (160, 616), (166, 643), (167, 655), (169, 676), (170, 679),

Gene: Franzy_64 Start: 44565, Stop: 45143, Start Num: 16

Candidate Starts for Franzy_64:

(Start: 16 @44565 has 23 MA's), (19, 44580), (57, 44742), (61, 44769), (81, 44838), (123, 45081),

Gene: Frederick_1 Start: 100, Stop: 798, Start Num: 54

Candidate Starts for Frederick_1:

(Start: 26 @1 has 33 MA's), (51, 88), (54, 100), (62, 148), (65, 178), (70, 202), (84, 256), (86, 262), (90, 277), (92, 289), (94, 304), (95, 307), (103, 367), (119, 466), (148, 577), (149, 580), (150, 583), (160, 616), (166, 643), (167, 655), (169, 676), (171, 685),

Gene: FrenchFry_1 Start: 1, Stop: 792, Start Num: 8

Candidate Starts for FrenchFry_1:

(Start: 8 @1 has 29 MA's), (Start: 14 @76 has 2 MA's), (21, 133), (32, 172), (35, 181), (44, 202), (65, 343), (66, 346), (70, 367), (73, 373), (86, 421), (90, 436), (94, 463), (97, 469), (109, 583), (110, 589), (111, 592), (112, 595), (125, 679),

Gene: Glass_1 Start: 1, Stop: 792, Start Num: 8

Candidate Starts for Glass_1:

(Start: 8 @1 has 29 MA's), (Start: 14 @76 has 2 MA's), (21, 133), (32, 172), (35, 181), (44, 202), (65, 343), (66, 346), (70, 367), (73, 373), (86, 421), (90, 436), (94, 463), (97, 469), (109, 583), (110, 589), (125, 679),

Gene: Godines_1 Start: 1, Stop: 792, Start Num: 8

Candidate Starts for Godines_1:

(Start: 8 @1 has 29 MA's), (11, 28), (Start: 12 @37 has 1 MA's), (Start: 14 @76 has 2 MA's), (21, 133), (32, 172), (35, 181), (65, 343), (70, 367), (73, 373), (86, 421), (90, 436), (94, 463), (97, 469), (109, 583), (110, 589), (112, 595), (125, 679),

Gene: GravityBall_69 Start: 44845, Stop: 45375, Start Num: 16

Candidate Starts for GravityBall_69:

(Start: 16 @44845 has 23 MA's), (58, 44971), (61, 44989), (83, 45064), (101, 45166), (105, 45184),

Gene: Grekaycon_70 Start: 45072, Stop: 45602, Start Num: 16

Candidate Starts for Grekaycon_70:

(Start: 16 @45072 has 23 MA's), (58, 45198), (61, 45216), (83, 45291), (91, 45321), (102, 45396), (105, 45411), (121, 45519), (126, 45540),

Gene: Hangman_1 Start: 1, Stop: 798, Start Num: 26

Candidate Starts for Hangman_1:

(Start: 26 @1 has 33 MA's), (51, 88), (54, 100), (62, 148), (65, 178), (70, 202), (84, 256), (86, 262), (90, 277), (92, 289), (94, 304), (95, 307), (103, 367), (109, 418), (119, 466), (148, 577), (149, 580), (150, 583), (160, 616), (166, 643), (167, 655), (169, 676), (171, 685),

Gene: Heath_1 Start: 1, Stop: 798, Start Num: 26

Candidate Starts for Heath_1:

(Start: 26 @1 has 33 MA's), (51, 88), (54, 100), (56, 109), (62, 148), (65, 178), (70, 202), (84, 256), (86, 262), (90, 277), (92, 289), (94, 304), (103, 367), (119, 466), (148, 577), (149, 580), (150, 583), (156, 592), (160, 616), (166, 643), (167, 655), (169, 676), (170, 679),

Gene: Hedgerow_1 Start: 1, Stop: 792, Start Num: 8

Candidate Starts for Hedgerow_1:

(Start: 8 @1 has 29 MA's), (Start: 14 @76 has 2 MA's), (21, 133), (32, 172), (35, 181), (44, 202), (65, 343), (66, 346), (70, 367), (73, 373), (86, 421), (90, 436), (94, 463), (97, 469), (109, 583), (110, 589), (111, 592), (112, 595), (125, 679),

Gene: Hilltopfarm_1 Start: 202, Stop: 861, Start Num: 22

Candidate Starts for Hilltopfarm_1:

(Start: 22 @202 has 4 MA's), (32, 235), (37, 247), (58, 352), (60, 367), (65, 406), (66, 409), (70, 430), (75, 445), (90, 481), (100, 559), (103, 571), (117, 652), (135, 760), (136, 763), (138, 766), (155, 814), (163, 850),

Gene: Holeinone_1 Start: 1, Stop: 792, Start Num: 8

Candidate Starts for Holeinone_1:

(Start: 8 @1 has 29 MA's), (Start: 14 @76 has 2 MA's), (21, 133), (32, 172), (35, 181), (44, 202), (65, 343), (66, 346), (70, 367), (73, 373), (86, 421), (90, 436), (94, 463), (97, 469), (109, 583), (110, 589), (125, 679),

Gene: Hosp_096 Start: 68870, Stop: 69679, Start Num: 26

Candidate Starts for Hosp_096:

(18, 68831), (Start: 26 @68870 has 33 MA's), (54, 68975), (70, 69077), (88, 69146), (92, 69164), (94, 69179), (109, 69293), (134, 69410), (148, 69455), (150, 69461), (156, 69470),

Gene: Hydro_1 Start: 1, Stop: 798, Start Num: 26

Candidate Starts for Hydro_1:

(Start: 26 @1 has 33 MA's), (51, 88), (54, 100), (62, 148), (65, 178), (70, 202), (84, 256), (86, 262), (90, 277), (92, 289), (94, 304), (95, 307), (103, 367), (119, 466), (148, 577), (149, 580), (150, 583), (160, 616), (166, 643), (167, 655), (169, 676), (170, 679), (183, 754),

Gene: Indlovu_1 Start: 1, Stop: 825, Start Num: 26

Candidate Starts for Indlovu_1:

(Start: 26 @1 has 33 MA's), (54, 100), (65, 178), (92, 289), (94, 304), (95, 307), (103, 367), (131, 538), (134, 553), (148, 598), (150, 604), (156, 613), (169, 697),

Gene: ItsyBitsy1_1 Start: 1, Stop: 792, Start Num: 8

Candidate Starts for ItsyBitsy1_1:

(Start: 8 @1 has 29 MA's), (Start: 14 @76 has 2 MA's), (21, 133), (32, 172), (35, 181), (44, 202), (65, 343), (66, 346), (70, 367), (73, 373), (86, 421), (90, 436), (94, 463), (97, 469), (109, 583), (110, 589), (125, 679),

Gene: JAMaL_1 Start: 1, Stop: 798, Start Num: 26

Candidate Starts for JAMaL_1:

(Start: 26 @1 has 33 MA's), (51, 88), (54, 100), (62, 148), (65, 178), (70, 202), (84, 256), (86, 262), (90, 277), (92, 289), (95, 307), (103, 367), (119, 466), (148, 577), (149, 580), (150, 583), (156, 592), (160, 616), (166, 643), (167, 655), (169, 676), (170, 679),

Gene: JKerns_69 Start: 45051, Stop: 45626, Start Num: 16

Candidate Starts for JKerns_69:

(Start: 16 @45051 has 23 MA's), (58, 45222), (61, 45240), (83, 45315), (91, 45345), (102, 45420), (105, 45435), (121, 45543), (126, 45564),

Gene: Jace_85 Start: 47046, Stop: 47594, Start Num: 36

Candidate Starts for Jace_85:

(Start: 36 @47046 has 1 MA's), (65, 47202), (69, 47223), (94, 47304), (95, 47307), (103, 47367), (142, 47559), (148, 47577), (152, 47586), (154, 47589),

Gene: JaguarMi_1 Start: 1, Stop: 798, Start Num: 26

Candidate Starts for JaguarMi_1:

(Start: 26 @1 has 33 MA's), (51, 88), (54, 100), (56, 109), (62, 148), (65, 178), (70, 202), (84, 256), (86, 262), (90, 277), (92, 289), (95, 307), (103, 367), (119, 466), (148, 577), (149, 580), (150, 583), (160, 616), (166, 643), (167, 655), (169, 676),

Gene: Jawnski_65 Start: 44074, Stop: 44652, Start Num: 16

Candidate Starts for Jawnski_65:

(Start: 16 @44074 has 23 MA's), (19, 44089), (61, 44278), (81, 44347), (123, 44590),

Gene: Jolie1_01 Start: 1, Stop: 810, Start Num: 26

Candidate Starts for Jolie1_01:

(Start: 26 @1 has 33 MA's), (54, 106), (70, 208), (88, 277), (92, 295), (94, 310), (95, 313), (109, 424), (134, 541), (148, 586), (150, 592), (156, 601),

Gene: Jordan_70 Start: 45176, Stop: 45751, Start Num: 16

Candidate Starts for Jordan_70:

(Start: 16 @45176 has 23 MA's), (58, 45347), (61, 45365), (83, 45440), (91, 45470), (102, 45545), (105, 45560), (121, 45668),

Gene: Kaleb_1 Start: 133, Stop: 792, Start Num: 21

Candidate Starts for Kaleb_1:

(Start: 8 @1 has 29 MA's), (Start: 14 @76 has 2 MA's), (21, 133), (32, 172), (35, 181), (44, 202), (65, 343), (66, 346), (70, 367), (73, 373), (86, 421), (90, 436), (94, 463), (97, 469), (109, 583), (110, 589), (111, 592), (112, 595), (125, 679),

Gene: KayaCho_1 Start: 1, Stop: 813, Start Num: 26

Candidate Starts for KayaCho_1:

(Start: 26 @1 has 33 MA's), (54, 106), (70, 208), (92, 295), (94, 310), (109, 424), (134, 544), (148, 589), (150, 595), (156, 604),

Gene: Kharcho_73 Start: 42919, Stop: 43530, Start Num: 42

Candidate Starts for Kharcho_73:

(Start: 42 @42919 has 2 MA's), (86, 43129), (111, 43291),

Gene: Kharcho_72 Start: 42263, Stop: 42922, Start Num: 30

Candidate Starts for Kharcho_72:

(Start: 30 @42263 has 3 MA's), (43, 42293), (60, 42395), (165, 42872),

Gene: Kheth_1 Start: 1, Stop: 792, Start Num: 8

Candidate Starts for Kheth_1:

(Start: 8 @1 has 29 MA's), (Start: 12 @37 has 1 MA's), (Start: 14 @76 has 2 MA's), (21, 133), (32, 172), (35, 181), (44, 202), (65, 343), (70, 367), (73, 373), (86, 421), (90, 436), (94, 463), (97, 469), (109, 583), (110, 589), (125, 679),

Gene: King2_64 Start: 44610, Stop: 45188, Start Num: 16

Candidate Starts for King2_64:

(Start: 16 @44610 has 23 MA's), (19, 44625), (61, 44814), (81, 44883), (123, 45126),

Gene: Lars_1 Start: 1, Stop: 792, Start Num: 8

Candidate Starts for Lars_1:

(Start: 8 @1 has 29 MA's), (Start: 14 @76 has 2 MA's), (21, 133), (32, 172), (35, 181), (44, 202), (65, 343), (66, 346), (70, 367), (73, 373), (86, 421), (90, 436), (94, 463), (97, 469), (109, 583), (110, 589), (125, 679),

Gene: Laurie_1 Start: 1, Stop: 792, Start Num: 8

Candidate Starts for Laurie_1:

(Start: 8 @1 has 29 MA's), (Start: 12 @37 has 1 MA's), (Start: 14 @76 has 2 MA's), (21, 133), (32, 172), (35, 181), (44, 202), (65, 343), (66, 346), (70, 367), (73, 373), (86, 421), (90, 436), (94, 463), (97, 469), (109, 583), (110, 589), (125, 679),

Gene: LeeroyJ_70 Start: 44774, Stop: 45304, Start Num: 16

Candidate Starts for LeeroyJ_70:

(Start: 16 @44774 has 23 MA's), (58, 44900), (61, 44918), (101, 45095), (105, 45113),

Gene: Lephleur_1 Start: 1, Stop: 792, Start Num: 8

Candidate Starts for Lephleur_1:

(Start: 8 @1 has 29 MA's), (11, 28), (Start: 12 @37 has 1 MA's), (Start: 14 @76 has 2 MA's), (21, 133), (32, 172), (35, 181), (44, 202), (65, 343), (66, 346), (70, 367), (73, 373), (86, 421), (90, 436), (94, 463), (97, 469), (109, 583), (110, 589), (125, 679),

Gene: LilMcDreamy_1 Start: 1, Stop: 852, Start Num: 26

Candidate Starts for LilMcDreamy_1:

(Start: 26 @1 has 33 MA's), (51, 97), (65, 187), (70, 211), (84, 265), (92, 298), (117, 457), (119, 475), (145, 595), (156, 619), (167, 679), (176, 736),

Gene: LittleMunchkin_1 Start: 10, Stop: 807, Start Num: 26

Candidate Starts for LittleMunchkin_1:

(Start: 24 @1 has 6 MA's), (Start: 26 @10 has 33 MA's), (60, 154), (64, 187), (65, 193), (66, 196), (67, 199), (79, 250), (85, 271), (86, 277), (90, 292), (95, 322), (178, 763), (181, 778),

Gene: LizLemon_1 Start: 1, Stop: 792, Start Num: 8

Candidate Starts for LizLemon_1:

(Start: 8 @1 has 29 MA's), (Start: 14 @76 has 2 MA's), (21, 133), (32, 172), (35, 181), (44, 202), (65, 343), (66, 346), (70, 367), (73, 373), (86, 421), (90, 436), (94, 463), (97, 469), (109, 583), (110, 589), (125, 679),

Gene: Lolalove_1 Start: 1, Stop: 798, Start Num: 26

Candidate Starts for Lolalove_1:

(Start: 26 @1 has 33 MA's), (51, 88), (54, 100), (62, 148), (65, 178), (70, 202), (84, 256), (86, 262), (90, 277), (92, 289), (94, 304), (95, 307), (103, 367), (119, 466), (148, 577), (149, 580), (150, 583), (160, 616), (166, 643), (167, 655), (169, 676), (171, 685),

Gene: Magpie_1 Start: 1, Stop: 798, Start Num: 26

Candidate Starts for Magpie_1:

(Start: 26 @1 has 33 MA's), (51, 88), (54, 100), (62, 148), (65, 178), (70, 202), (84, 256), (86, 262), (90, 277), (92, 289), (95, 307), (103, 367), (119, 466), (148, 577), (149, 580), (150, 583), (160, 616), (166, 643), (167, 655), (169, 676), (170, 679),

Gene: MakoManhole_1 Start: 1, Stop: 804, Start Num: 24

Candidate Starts for MakoManhole_1:

(Start: 24 @1 has 6 MA's), (Start: 26 @10 has 33 MA's), (59, 151), (65, 193), (70, 217), (73, 223), (90, 292), (94, 319), (95, 322), (169, 703), (170, 706), (181, 775),

Gene: Margaery_97 Start: 55238, Stop: 55930, Start Num: 23

Candidate Starts for Margaery_97:

(11, 55121), (Start: 23 @55238 has 1 MA's), (Start: 25 @55247 has 4 MA's), (48, 55334), (68, 55442), (72, 55460), (76, 55475), (104, 55631), (128, 55796),

Gene: Martha_69 Start: 45008, Stop: 45538, Start Num: 16

Candidate Starts for Martha_69:

(Start: 16 @45008 has 23 MA's), (58, 45134), (61, 45152), (83, 45227), (91, 45257), (102, 45332), (105, 45347), (121, 45455),

Gene: MasterPo_1 Start: 1, Stop: 792, Start Num: 8

Candidate Starts for MasterPo_1:

(Start: 8 @1 has 29 MA's), (11, 28), (Start: 12 @37 has 1 MA's), (Start: 14 @76 has 2 MA's), (21, 133), (32, 172), (35, 181), (44, 202), (65, 343), (66, 346), (70, 367), (73, 373), (86, 421), (90, 436), (94, 463), (97, 469), (109, 583), (110, 589), (125, 679),

Gene: Matzah_98 Start: 54900, Stop: 55583, Start Num: 25

Candidate Starts for Matzah_98:

(Start: 25 @54900 has 4 MA's), (48, 54987), (68, 55095), (72, 55113), (76, 55128), (82, 55158), (85, 55164), (96, 55218), (99, 55254), (104, 55284), (109, 55335), (111, 55344), (120, 55401), (128, 55449),

Gene: Megan_1 Start: 1, Stop: 666, Start Num: 28

Candidate Starts for Megan_1:

(Start: 28 @1 has 2 MA's), (52, 97), (62, 154), (68, 190), (71, 205), (76, 223), (78, 229), (80, 244), (82, 253), (86, 265), (107, 403), (122, 517), (124, 529), (161, 637),

Gene: MementoMori_97 Start: 54789, Stop: 55472, Start Num: 25

Candidate Starts for MementoMori_97:

(Start: 25 @54789 has 4 MA's), (48, 54876), (68, 54984), (72, 55002), (76, 55017), (82, 55047), (85, 55053), (96, 55107), (99, 55143), (104, 55173), (120, 55290), (128, 55338),

Gene: MenE_51 Start: 29392, Stop: 29925, Start Num: 34

Candidate Starts for MenE_51:

(4, 29158), (5, 29170), (11, 29248), (Start: 34 @29392 has 7 MA's), (44, 29416), (57, 29494), (60, 29518), (61, 29521), (65, 29557), (70, 29581), (87, 29620), (93, 29650), (94, 29659),

Gene: Mithril_1 Start: 1, Stop: 798, Start Num: 26

Candidate Starts for Mithril_1:

(Start: 26 @1 has 33 MA's), (51, 88), (54, 100), (62, 148), (65, 178), (70, 202), (84, 256), (86, 262), (90, 277), (92, 289), (94, 304), (95, 307), (103, 367), (119, 466), (148, 577), (149, 580), (150, 583), (160, 616), (166, 643), (167, 655), (169, 676), (171, 685),

Gene: MossRose_1 Start: 1, Stop: 804, Start Num: 24

Candidate Starts for MossRose_1:

(Start: 24 @1 has 6 MA's), (Start: 26 @10 has 33 MA's), (59, 151), (65, 193), (70, 217), (73, 223), (90, 292), (94, 319), (95, 322), (169, 703), (170, 706), (181, 775),

Gene: Mudslide_1 Start: 1, Stop: 798, Start Num: 26

Candidate Starts for Mudslide_1:

(Start: 26 @1 has 33 MA's), (51, 88), (54, 100), (62, 148), (65, 178), (70, 202), (84, 256), (86, 262), (90, 277), (92, 289), (94, 304), (95, 307), (103, 367), (119, 466), (148, 577), (149, 580), (150, 583), (160, 616), (166, 643), (167, 655), (169, 676), (171, 685),

Gene: Mysterious_1 Start: 1, Stop: 813, Start Num: 26

Candidate Starts for Mysterious_1:

(Start: 26 @1 has 33 MA's), (37, 19), (51, 88), (65, 178), (70, 202), (84, 256), (86, 262), (90, 277), (92, 289), (94, 304), (118, 463), (131, 535), (148, 592), (150, 598), (151, 601), (158, 613), (164, 643), (167, 670), (174, 712), (180, 754), (181, 763),

Gene: NHagos_1 Start: 1, Stop: 633, Start Num: 24

Candidate Starts for NHagos_1:

(Start: 24 @1 has 6 MA's), (Start: 26 @10 has 33 MA's), (51, 103), (53, 109), (60, 154), (65, 193), (70, 217), (90, 292), (108, 424), (116, 463), (129, 547), (139, 580), (153, 619), (156, 622), (158, 628),

Gene: Nanao_1 Start: 1, Stop: 798, Start Num: 26

Candidate Starts for Nanao_1:

(Start: 26 @1 has 33 MA's), (51, 88), (54, 100), (62, 148), (65, 178), (66, 181), (70, 202), (84, 256), (86, 262), (90, 277), (94, 304), (95, 307), (103, 367), (119, 466), (148, 577), (149, 580), (150, 583), (167, 655), (169, 676), (170, 679), (183, 754),

Gene: Nangang_1 Start: 1, Stop: 807, Start Num: 26

Candidate Starts for Nangang_1:

(Start: 26 @1 has 33 MA's), (35, 16), (37, 19), (66, 181), (84, 256), (90, 277), (94, 304), (118, 463), (131, 538), (148, 595), (150, 601), (151, 604), (158, 616), (164, 646),

Gene: NathanVaag_65 Start: 44298, Stop: 44876, Start Num: 16

Candidate Starts for NathanVaag_65:

(Start: 16 @44298 has 23 MA's), (19, 44313), (Start: 30 @44361 has 3 MA's), (61, 44502), (81, 44571), (115, 44763), (123, 44814), (140, 44865),

Gene: Nicole72_1 Start: 1, Stop: 666, Start Num: 28

Candidate Starts for Nicole72_1:

(Start: 28 @1 has 2 MA's), (52, 97), (68, 190), (76, 223), (78, 229), (80, 244), (82, 253), (85, 259), (122, 517), (161, 637),

Gene: Nigel_1 Start: 1, Stop: 789, Start Num: 26

Candidate Starts for Nigel_1:

(Start: 26 @1 has 33 MA's), (51, 88), (54, 100), (65, 178), (70, 202), (84, 256), (86, 262), (94, 304), (103, 367), (111, 427), (119, 466), (148, 568), (149, 571), (156, 583), (160, 607), (166, 634), (167, 646), (169, 667), (170, 670),

Gene: Opia_1 Start: 1, Stop: 792, Start Num: 8

Candidate Starts for Opia_1:

(Start: 8 @1 has 29 MA's), (Start: 12 @37 has 1 MA's), (Start: 14 @76 has 2 MA's), (21, 133), (32, 172), (35, 181), (44, 202), (65, 343), (66, 346), (70, 367), (73, 373), (86, 421), (90, 436), (94, 463), (97, 469), (109, 583), (110, 589), (111, 592), (112, 595), (125, 679),

Gene: Ottawa_72 Start: 42213, Stop: 42872, Start Num: 30

Candidate Starts for Ottawa_72:

(Start: 30 @42213 has 3 MA's), (43, 42243), (60, 42345), (165, 42822),

Gene: Ottawa_73 Start: 42869, Stop: 43480, Start Num: 42

Candidate Starts for Ottawa_73:

(Start: 42 @42869 has 2 MA's), (86, 43079), (111, 43241),

Gene: PenguinLover67_1 Start: 1, Stop: 633, Start Num: 27

Candidate Starts for PenguinLover67_1:

(Start: 27 @1 has 3 MA's), (65, 187), (92, 298), (94, 313), (95, 316), (110, 433), (147, 601),

Gene: Phantasmagoria_1 Start: 1, Stop: 792, Start Num: 8

Candidate Starts for Phantasmagoria_1:

(Start: 8 @1 has 29 MA's), (Start: 12 @37 has 1 MA's), (Start: 14 @76 has 2 MA's), (21, 133), (32, 172), (35, 181), (44, 202), (65, 343), (66, 346), (70, 367), (73, 373), (86, 421), (90, 436), (94, 463), (97, 469), (110, 589), (112, 595), (125, 679),

Gene: Phelemich_1 Start: 1, Stop: 813, Start Num: 26

Candidate Starts for Phelemich_1:

(Start: 26 @1 has 33 MA's), (37, 19), (51, 88), (65, 178), (84, 256), (86, 262), (90, 277), (94, 304), (118, 463), (131, 535), (148, 592), (150, 598), (151, 601), (158, 613), (164, 643), (167, 670), (174, 712), (180, 754), (181, 763),

Gene: Phonegingi_46 Start: 29171, Stop: 29704, Start Num: 34

Candidate Starts for Phonegingi_46:

(Start: 34 @29171 has 7 MA's), (44, 29195), (57, 29273), (60, 29297), (61, 29300), (65, 29336), (70, 29360), (87, 29399), (93, 29429), (94, 29438), (119, 29585), (141, 29693),

Gene: Piccoletto_66 Start: 44460, Stop: 45038, Start Num: 16

Candidate Starts for Piccoletto_66:

(Start: 16 @44460 has 23 MA's), (19, 44475), (Start: 30 @44523 has 3 MA's), (61, 44664), (81, 44733), (123, 44976), (140, 45027),

Gene: Pickles13_45 Start: 29439, Stop: 29972, Start Num: 34

Candidate Starts for Pickles13_45:

(4, 29202), (10, 29286), (Start: 34 @29439 has 7 MA's), (44, 29463), (57, 29541), (60, 29565), (61, 29568), (65, 29604), (70, 29628), (87, 29667), (93, 29697), (119, 29853),

Gene: Pippa_70 Start: 45043, Stop: 45573, Start Num: 16

Candidate Starts for Pippa_70:

(Start: 16 @45043 has 23 MA's), (58, 45169), (61, 45187), (83, 45262), (91, 45292), (102, 45367), (105, 45382), (121, 45490), (126, 45511),

Gene: Poster_1 Start: 1, Stop: 798, Start Num: 26

Candidate Starts for Poster_1:

(Start: 26 @1 has 33 MA's), (51, 88), (54, 100), (62, 148), (65, 178), (66, 181), (70, 202), (84, 256), (86, 262), (90, 277), (94, 304), (95, 307), (103, 367), (119, 466), (148, 577), (149, 580), (150, 583), (167, 655), (169, 676), (170, 679), (183, 754),

Gene: Prince_1 Start: 1, Stop: 798, Start Num: 26

Candidate Starts for Prince_1:

(Start: 26 @1 has 33 MA's), (51, 88), (54, 100), (62, 148), (65, 178), (70, 202), (84, 256), (86, 262), (90, 277), (92, 289), (94, 304), (95, 307), (103, 367), (119, 466), (148, 577), (149, 580), (150, 583), (160, 616), (166, 643), (167, 655), (169, 676), (171, 685),

Gene: Quesadilla_1 Start: 1, Stop: 633, Start Num: 27

Candidate Starts for Quesadilla_1:

(Start: 27 @1 has 3 MA's), (51, 97), (65, 187), (84, 265), (94, 313), (110, 433),

Gene: Qyrzula_1 Start: 1, Stop: 792, Start Num: 8

Candidate Starts for Qyrzula_1:

(Start: 8 @1 has 29 MA's), (Start: 14 @76 has 2 MA's), (21, 133), (32, 172), (35, 181), (44, 202), (65, 343), (66, 346), (70, 367), (73, 373), (86, 421), (90, 436), (94, 463), (97, 469), (109, 583), (110, 589), (125, 679),

Gene: RawrgerThat_1 Start: 1, Stop: 798, Start Num: 26

Candidate Starts for RawrgerThat_1:

(Start: 26 @1 has 33 MA's), (51, 88), (54, 100), (62, 148), (65, 178), (70, 202), (84, 256), (86, 262), (90, 277), (92, 289), (95, 307), (103, 367), (119, 466), (148, 577), (149, 580), (150, 583), (160, 616), (166, 643), (167, 655), (169, 676), (170, 679),

Gene: Reprobate_1 Start: 1, Stop: 810, Start Num: 26

Candidate Starts for Reprobate_1:

(Start: 26 @1 has 33 MA's), (37, 19), (51, 88), (84, 256), (86, 262), (90, 277), (94, 304), (118, 463), (131, 532), (148, 589), (150, 595), (151, 598), (158, 610), (164, 640), (167, 667), (174, 709), (180, 751), (181, 760),

Gene: Rhinoforte_1 Start: 1, Stop: 792, Start Num: 8

Candidate Starts for Rhinoforte_1:

(Start: 8 @1 has 29 MA's), (Start: 14 @76 has 2 MA's), (21, 133), (32, 172), (35, 181), (44, 202), (65, 343), (66, 346), (70, 367), (73, 373), (86, 421), (90, 436), (94, 463), (97, 469), (109, 583), (110, 589), (125, 679),

Gene: Rich_1 Start: 1, Stop: 819, Start Num: 26

Candidate Starts for Rich_1:

(Start: 26 @1 has 33 MA's), (35, 16), (37, 19), (47, 67), (90, 277), (101, 358), (118, 463), (131, 538), (148, 595), (151, 604), (164, 646),

Gene: Rosebush_1 Start: 1, Stop: 792, Start Num: 8

Candidate Starts for Rosebush_1:

(Start: 8 @1 has 29 MA's), (Start: 14 @76 has 2 MA's), (21, 133), (32, 172), (35, 181), (44, 202), (65, 343), (66, 346), (70, 367), (73, 373), (86, 421), (90, 436), (94, 463), (97, 469), (109, 583), (110, 589), (111, 592), (112, 595), (125, 679),

Gene: Sabella_1 Start: 76, Stop: 792, Start Num: 14

Candidate Starts for Sabella_1:

(Start: 8 @1 has 29 MA's), (Start: 12 @37 has 1 MA's), (Start: 14 @76 has 2 MA's), (21, 133), (32, 172), (35, 181), (44, 202), (65, 343), (70, 367), (73, 373), (86, 421), (90, 436), (94, 463), (97, 469), (109, 583), (110, 589), (125, 679),

Gene: Saguaro_1 Start: 1, Stop: 735, Start Num: 15

Candidate Starts for Saguaro_1:

(Start: 15 @1 has 1 MA's), (17, 28), (Start: 27 @79 has 3 MA's), (54, 187), (65, 265), (86, 349), (88, 358), (90, 364), (92, 376), (94, 391), (95, 394), (101, 445), (112, 517), (132, 625), (157, 700),

Gene: Serendipitous_1 Start: 1, Stop: 816, Start Num: 26

Candidate Starts for Serendipitous_1:

(Start: 26 @1 has 33 MA's), (35, 16), (37, 19), (84, 256), (90, 277), (101, 358), (118, 463), (131, 538), (148, 595), (150, 601), (151, 604), (158, 616), (164, 646), (177, 739),

Gene: Shade_69 Start: 44814, Stop: 45389, Start Num: 16

Candidate Starts for Shade_69:

(Start: 16 @44814 has 23 MA's), (58, 44985), (61, 45003), (83, 45078), (91, 45108), (102, 45183), (105, 45198), (121, 45306), (126, 45327),

Gene: Sicarius2_71 Start: 43199, Stop: 43729, Start Num: 29

Candidate Starts for Sicarius2_71:

(Start: 29 @43199 has 2 MA's), (43, 43235), (45, 43244), (61, 43343), (83, 43421), (94, 43469), (113, 43592), (143, 43724),

Gene: SirJeffery_1 Start: 1, Stop: 816, Start Num: 26

Candidate Starts for SirJeffery_1:

(Start: 26 @1 has 33 MA's), (35, 16), (37, 19), (65, 178), (84, 256), (90, 277), (94, 304), (101, 358), (118, 463), (131, 538), (148, 595), (151, 604), (164, 646), (177, 739),

Gene: Sonali_86 Start: 53450, Stop: 54043, Start Num: 30

Candidate Starts for Sonali_86:

(1, 52859), (2, 52970), (9, 53303), (Start: 24 @53429 has 6 MA's), (Start: 30 @53450 has 3 MA's), (56, 53558), (74, 53642), (133, 53945), (139, 53969),

Gene: Sonny_69 Start: 44737, Stop: 45312, Start Num: 16

Candidate Starts for Sonny_69:

(Start: 16 @44737 has 23 MA's), (58, 44908), (61, 44926), (83, 45001), (91, 45031), (102, 45106), (105, 45121), (121, 45229), (126, 45250),

Gene: Sour_1 Start: 1, Stop: 615, Start Num: 33

Candidate Starts for Sour_1:

(Start: 33 @1 has 2 MA's), (60, 130), (65, 169), (70, 193), (90, 268), (94, 295), (110, 415), (147, 583),

Gene: StAugustine_2 Start: 428, Stop: 1015, Start Num: 42

Candidate Starts for StAugustine_2:

(20, 359), (Start: 36 @416 has 1 MA's), (38, 419), (Start: 42 @428 has 2 MA's), (44, 437), (61, 542), (65, 578), (77, 626), (86, 662), (92, 689), (98, 740), (114, 836), (147, 989),

Gene: StevieBAY_70 Start: 45067, Stop: 45597, Start Num: 16

Candidate Starts for StevieBAY_70:

(Start: 16 @45067 has 23 MA's), (58, 45193), (61, 45211), (83, 45286), (101, 45388), (105, 45406),

Gene: Stinger_1 Start: 1, Stop: 789, Start Num: 26

Candidate Starts for Stinger_1:

(Start: 26 @1 has 33 MA's), (51, 88), (54, 100), (65, 178), (70, 202), (84, 256), (86, 262), (94, 304), (103, 367), (119, 466), (148, 568), (149, 571), (150, 574), (160, 607), (166, 634), (167, 646), (169, 667), (170, 670),

Gene: StinkyVeggy_1 Start: 1, Stop: 807, Start Num: 26

Candidate Starts for StinkyVeggy_1:

(Start: 26 @1 has 33 MA's), (35, 16), (37, 19), (84, 256), (90, 277), (94, 304), (118, 463), (131, 538), (148, 595), (150, 601), (151, 604), (158, 616), (164, 646),

Gene: Suigeneris_1 Start: 1, Stop: 816, Start Num: 26

Candidate Starts for Suigeneris_1:

(Start: 26 @1 has 33 MA's), (35, 16), (37, 19), (65, 178), (84, 256), (90, 277), (94, 304), (101, 358), (118, 463), (131, 538), (148, 595), (151, 604), (164, 646), (177, 739),

Gene: TA17A_1 Start: 76, Stop: 792, Start Num: 14

Candidate Starts for TA17A_1:

(Start: 8 @1 has 29 MA's), (Start: 12 @37 has 1 MA's), (Start: 14 @76 has 2 MA's), (21, 133), (32, 172), (35, 181), (44, 202), (65, 343), (70, 367), (73, 373), (86, 421), (90, 436), (94, 463), (97, 469), (109, 583), (110, 589), (125, 679), (127, 688),

Gene: TaeYoung_70 Start: 44980, Stop: 45510, Start Num: 16

Candidate Starts for TaeYoung_70:

(Start: 16 @44980 has 23 MA's), (58, 45106), (61, 45124), (83, 45199), (91, 45229), (102, 45304), (105, 45319), (121, 45427), (126, 45448),

Gene: Timinator_70 Start: 44887, Stop: 45417, Start Num: 16

Candidate Starts for Timinator_70:

(Start: 16 @44887 has 23 MA's), (58, 45013), (61, 45031), (101, 45208), (105, 45226),

Gene: Tinciduntolum_1 Start: 1, Stop: 792, Start Num: 8

Candidate Starts for Tinciduntolum_1:

(Start: 8 @1 has 29 MA's), (Start: 14 @76 has 2 MA's), (21, 133), (32, 172), (35, 181), (44, 202), (65, 343), (66, 346), (70, 367), (73, 373), (86, 421), (90, 436), (94, 463), (97, 469), (109, 583), (110, 589), (111, 592), (112, 595), (125, 679),

Gene: Tonitrus_1 Start: 16, Stop: 750, Start Num: 41

Candidate Starts for Tonitrus_1:

(31, 1), (41, 16), (60, 127), (61, 130), (64, 160), (65, 166), (66, 169), (70, 190), (84, 244), (87, 253), (94, 292), (103, 355), (130, 496), (134, 514), (149, 559), (150, 562), (160, 595), (164, 607), (168, 652), (170, 658), (172, 667), (175, 685),

Gene: Tres_1 Start: 1, Stop: 792, Start Num: 8

Candidate Starts for Tres_1:

(Start: 8 @1 has 29 MA's), (Start: 12 @37 has 1 MA's), (Start: 14 @76 has 2 MA's), (21, 133), (32, 172), (35, 181), (44, 202), (65, 343), (66, 346), (70, 367), (73, 373), (86, 421), (90, 436), (94, 463), (97, 469), (109, 583), (110, 589), (125, 679),

Gene: TurkishDelight_122 Start: 89500, Stop: 90093, Start Num: 50

Candidate Starts for TurkishDelight_122:

(Start: 50 @89500 has 1 MA's), (55, 89518), (63, 89584), (88, 89689),

Gene: Typha_1 Start: 202, Stop: 861, Start Num: 22

Candidate Starts for Typha_1:

(Start: 22 @202 has 4 MA's), (32, 235), (37, 247), (58, 352), (59, 364), (60, 367), (65, 406), (66, 409), (70, 430), (75, 445), (90, 481), (100, 559), (117, 652), (135, 760), (136, 763), (138, 766), (155, 814), (163, 850),

Gene: VioletZ_1 Start: 1, Stop: 798, Start Num: 26

Candidate Starts for VioletZ_1:

(Start: 26 @1 has 33 MA's), (51, 88), (54, 100), (62, 148), (65, 178), (70, 202), (84, 256), (86, 262), (90, 277), (92, 289), (94, 304), (95, 307), (103, 367), (119, 466), (148, 577), (149, 580), (150, 583), (160, 616), (166, 643), (167, 655), (169, 676), (170, 679),

Gene: Waleliano_1 Start: 1, Stop: 798, Start Num: 26

Candidate Starts for Waleliano_1:

(Start: 26 @1 has 33 MA's), (51, 88), (54, 100), (62, 148), (65, 178), (70, 202), (84, 256), (86, 262), (90, 277), (92, 289), (94, 304), (95, 307), (103, 367), (119, 466), (148, 577), (149, 580), (150, 583), (160, 616), (166, 643), (167, 655), (169, 676), (171, 685),

Gene: Warren_46 Start: 29178, Stop: 29711, Start Num: 34

Candidate Starts for Warren_46:

(Start: 34 @29178 has 7 MA's), (44, 29202), (57, 29280), (60, 29304), (61, 29307), (66, 29346), (70, 29367), (87, 29406), (93, 29436), (94, 29445), (119, 29592),

Gene: West99_1 Start: 1, Stop: 792, Start Num: 8

Candidate Starts for West99_1:

(Start: 8 @1 has 29 MA's), (Start: 14 @76 has 2 MA's), (21, 133), (32, 172), (35, 181), (44, 202), (65, 343), (66, 346), (70, 367), (73, 373), (86, 421), (90, 436), (94, 463), (97, 469), (109, 583), (110, 589), (111, 592), (112, 595), (125, 679),

Gene: Wooper_1 Start: 1, Stop: 804, Start Num: 24

Candidate Starts for Wooper_1:

(Start: 24 @1 has 6 MA's), (Start: 26 @10 has 33 MA's), (59, 151), (65, 193), (70, 217), (73, 223), (90, 292), (94, 319), (95, 322), (156, 619), (169, 703), (170, 706), (181, 775),

Gene: Wyborn_70 Start: 43934, Stop: 44464, Start Num: 29

Candidate Starts for Wyborn_70:

(Start: 29 @43934 has 2 MA's), (43, 43970), (45, 43979), (61, 44078), (83, 44156), (94, 44204), (113, 44327), (143, 44459),

Gene: Zartrosa_71 Start: 45067, Stop: 45642, Start Num: 16

Candidate Starts for Zartrosa_71:

(Start: 16 @45067 has 23 MA's), (58, 45238), (61, 45256), (83, 45331), (91, 45361), (102, 45436), (105, 45451), (121, 45559), (126, 45580),

Gene: Zemanar_1 Start: 1, Stop: 798, Start Num: 26

Candidate Starts for Zemanar_1:

(Start: 26 @1 has 33 MA's), (51, 88), (54, 100), (56, 109), (62, 148), (65, 178), (70, 202), (84, 256), (86, 262), (90, 277), (92, 289), (95, 307), (103, 367), (119, 466), (148, 577), (149, 580), (150, 583), (156, 592), (160, 616), (166, 643), (167, 655), (169, 676), (170, 679),