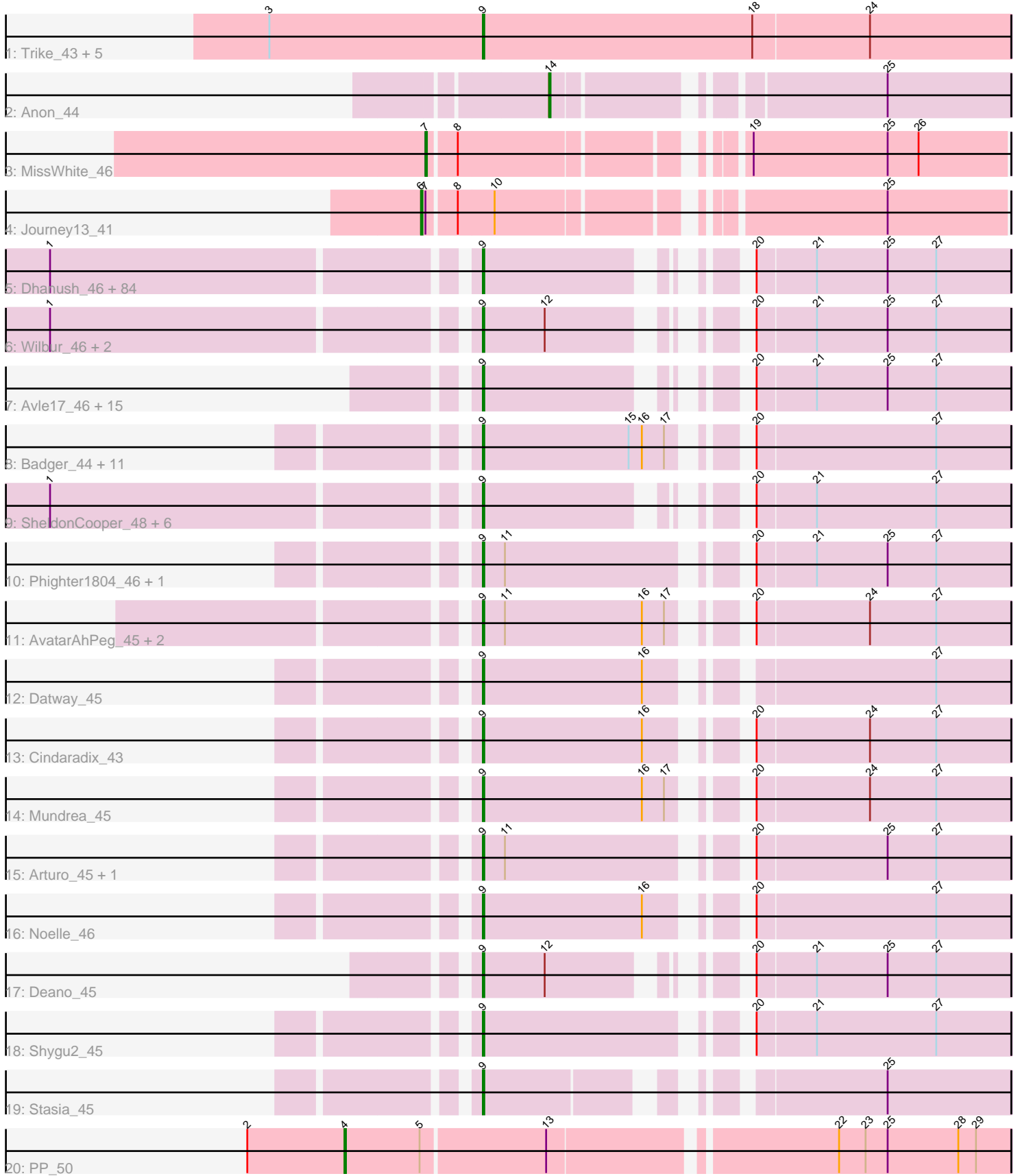


Pham 157655



Note: Tracks are now grouped by subcluster and scaled. Switching in subcluster is indicated by changes in track color. Track scale is now set by default to display the region 30 bp upstream of start 1 to 30 bp downstream of the last possible start. If this default region is judged to be packed too tightly with annotated starts, the track will be further scaled to only show that region of the ORF with annotated starts. This action will be indicated by adding "Zoomed" to the title. For starts, yellow indicates the location of called starts comprised solely of Glimmer/GeneMark auto-annotations, green indicates the location of called starts with at least 1 manual gene annotation.

Pham 157655 Report

This analysis was run 04/13/24 on database version 558.

Pham number 157655 has 147 members, 4 are drafts.

Phages represented in each track:

- Track 1 : Trike_43, Poompha_44, Drake94_43, Severus_43, KittenMittens_42, PeaceMeal1_43
- Track 2 : Anon_44
- Track 3 : MissWhite_46
- Track 4 : Journey13_41
- Track 5 : Dhanush_46, Bombshell_46, Nebs_47, Relief_45, Jaykayelowell_44, Chaph_46, CentreCat_46, Melvin_48, Ruin_46, Nyxis_46, Pipcraft_44, TygerBlood_46, Citius_46, HamSlice_45, JetBlade_46, Phelipe_47, TroyPia_47, Lemur_46, Millski_45, Caelakin_46, LittleB_46, Cintron_45, Morrow_47, Alberto7_47, Medusa_46, Connomayer_46, KFPoly_45, Blackmoor_46, Sabertooth_46, Iracema64_47, Ulysses_45, Shaka_46, LeoAvram_46, Scamp_46, Clarenza_45, Wizard007_46, Annyong_46, Bartimeaus_46, Skipitt_45, Lunsford_47, Koreni_45, Ohfah_47, Iceman_46, Eurydice_47, Druantia_46, MeeZee_46, Burger_44, NorthStar_45, Happiness_45, Peaches_46, Eros_46, LittleGuy_46, Sparxx_47, Thanksgivukkah_45, Pumbaa_46, Maxo_47, Albee_46, Eapen_46, Baby16_46, Flux_46, LappelDuVide_45, BubbleTrouble_45, Tinybot_45, Kingmustik0402_46, Palestino_45, Phontbonne_46, Eris_45, TinaFeyge_46, Kampy_46, Eagle_46, Abdiel_46, Broseidon_46, OKaNui_46, Commander_46, TiroTheta9_46, Lorenzo_46, Polymorphads_47, Florean_46, Roosevelt_45, PeterPeter_46, ICleared_46, YoSam321_46, Taquarus_46, Spino_45, Holli_45
- Track 6 : Wilbur_46, Romney_46, LochMonster_47
- Track 7 : Avle17_46, NotAPhaseMom_46, Mazhar510_46, JoongJeon_45, Wander_46, BellusTerra_47, Bruiser_45, Phacado_46, Camperdownii_44, Houdini22_46, Maverick_46, Kyee_46, Funston_45, Cocoaberry_46, Nemo27_46, Gadost_46
- Track 8 : Badger_44, Morpher26_45, Cici_45, Xena_44, Bumblebee11_44, AbbysRanger_45, Backyardigan_44, Achebe_44, PetiteSangsue_45, Katalie136_45, Perplexer_45, Wile_45
- Track 9 : SheldonCooper_48, BangNhom_47, Cerulean_47, LHTSCC_48, Obama12_47, ChampagnePapi_48, Kremtemulon_44
- Track 10 : Phighter1804_46, DirtyDunning_45
- Track 11 : AvatarAhPeg_45, Stink_44, Miramae_45
- Track 12 : Datway_45
- Track 13 : Cindaradix_43
- Track 14 : Mundrea_45
- Track 15 : Arturo_45, Kratak_46
- Track 16 : Noelle_46

- Track 17 : Deano_45
- Track 18 : Shygu2_45
- Track 19 : Stasia_45
- Track 20 : PP_50

Summary of Final Annotations (See graph section above for start numbers):

The start number called the most often in the published annotations is 9, it was called in 139 of the 143 non-draft genes in the pham.

Genes that call this "Most Annotated" start:

- AbbysRanger_45, Abdiel_46, Achebe_44, Albee_46, Alberto7_47, Annyong_46, Arturo_45, AvatarAhPeg_45, Avle17_46, Baby16_46, Backyardigan_44, Badger_44, BangNhom_47, Bartimeaus_46, BellusTerra_47, Blackmoor_46, Bombshell_46, Broseidon_46, Bruiser_45, BubbleTrouble_45, Bumblebee11_44, Burger_44, Caelakin_46, Camperdownii_44, CentreCat_46, Cerulean_47, ChampagnePapi_48, Chaph_46, Cici_45, Cindaradix_43, Cintron_45, Citius_46, Clarenza_45, Cocoaberry_46, Commander_46, Connomayer_46, Datway_45, Deano_45, Dhanush_46, DirtyDunning_45, Drake94_43, Druantia_46, Eagle_46, Eapen_46, Eris_45, Eros_46, Eurydice_47, Floean_46, Flux_46, Funston_45, Gadost_46, HamSlice_45, Happiness_45, Holli_45, Houdini22_46, ICleared_46, Iceman_46, Iracema64_47, Jaykayelowell_44, JetBlade_46, JoongJeon_45, KFPoly_45, Kampy_46, Katalie136_45, Kingmustik0402_46, KittenMittens_42, Koreni_45, Kratak_46, Kremtemulon_44, Kyee_46, LHTSCC_48, LappelDuVide_45, Lemur_46, LeoAvram_46, LittleB_46, LittleGuy_46, LochMonster_47, Lorenzo_46, Lunsford_47, Maverick_46, Maxo_47, Mazhar510_46, Medusa_46, MeeZee_46, Melvin_48, Millski_45, Miramae_45, Morpher26_45, Morrow_47, Mundrea_45, Nebs_47, Nemo27_46, Noelle_46, NorthStar_45, NotAPhaseMom_46, Nyxis_46, OKaNui_46, Obama12_47, Ohfah_47, Palestino_45, PeaceMeal1_43, Peaches_46, Perplexer_45, PeterPeter_46, PetiteSangsue_45, Phacado_46, Phelipe_47, Phighter1804_46, Phontbonne_46, Pipcraft_44, Polymorphads_47, Poompha_44, Pumbaa_46, Relief_45, Romney_46, Roosevelt_45, Ruin_46, Sabertooth_46, Scamp_46, Severus_43, Shaka_46, SheldonCooper_48, Shygu2_45, Skipitt_45, Sparxx_47, Spino_45, Stasia_45, Stink_44, Taquarus_46, Thanksgivukkah_45, TinaFeyge_46, Tinybot_45, TiroTheta9_46, Trike_43, TroyPia_47, TygerBlood_46, Ulysses_45, Wander_46, Wilbur_46, Wile_45, Wizard007_46, Xena_44, YoSam321_46,

Genes that have the "Most Annotated" start but do not call it:

-

Genes that do not have the "Most Annotated" start:

- Anon_44, Journey13_41, MissWhite_46, PP_50,

Summary by start number:

Start 4:

- Found in 1 of 147 (0.7%) of genes in pham
- Manual Annotations of this start: 1 of 143
- Called 100.0% of time when present

- Phage (with cluster) where this start called: PP_50 (A7),

Start 6:

- Found in 1 of 147 (0.7%) of genes in pham
- Manual Annotations of this start: 1 of 143
- Called 100.0% of time when present
- Phage (with cluster) where this start called: Journey13_41 (A2),

Start 7:

- Found in 2 of 147 (1.4%) of genes in pham
- Manual Annotations of this start: 1 of 143
- Called 50.0% of time when present
- Phage (with cluster) where this start called: MissWhite_46 (A2),

Start 9:

- Found in 143 of 147 (97.3%) of genes in pham
- Manual Annotations of this start: 139 of 143
- Called 100.0% of time when present
- Phage (with cluster) where this start called: AbbysRanger_45 (A4), Abdiel_46 (A4), Achebe_44 (A4), Albee_46 (A4), Alberto7_47 (A4), Annyong_46 (A4), Arturo_45 (A4), AvatarAhPeg_45 (A4), Avle17_46 (A4), Baby16_46 (A4), Backyardigan_44 (A4), Badger_44 (A4), BangNhom_47 (A4), Bartimeaus_46 (A4), BellusTerra_47 (A4), Blackmoor_46 (A4), Bombshell_46 (A4), Broseidon_46 (A4), Bruiser_45 (A4), BubbleTrouble_45 (A4), Bumblebee11_44 (A4), Burger_44 (A4), Caelakin_46 (A4), Camperdownii_44 (A4), CentreCat_46 (A4), Cerulean_47 (A4), ChampagnePapi_48 (A4), Chaph_46 (A4), Cici_45 (A4), Cindaradix_43 (A4), Cintron_45 (A4), Citius_46 (A4), Clarenza_45 (A4), Cocoaberry_46 (A4), Commander_46 (A4), Connomayer_46 (A4), Datway_45 (A4), Deano_45 (A4), Dhanush_46 (A4), DirtyDunning_45 (A4), Drake94_43 (A10), Druantia_46 (A4), Eagle_46 (A4), Eapen_46 (A4), Eris_45 (A4), Eros_46 (A4), Eurydice_47 (A4), Florean_46 (A4), Flux_46 (A4), Funston_45 (A4), Gadost_46 (A4), HamSlice_45 (A4), Happiness_45 (A4), Holli_45 (A4), Houdini22_46 (A4), ICleared_46 (A4), Iceman_46 (A4), Iracema64_47 (A4), Jaykayelowell_44 (A4), JetBlade_46 (A4), JoongJeon_45 (A4), KFPoly_45 (A4), Kamy_46 (A4), Katalie136_45 (A4), Kingmustik0402_46 (A4), KittenMittens_42 (A10), Koreni_45 (A4), Kratak_46 (A4), Kremtemulon_44 (A4), Kyee_46 (A4), LHTSCC_48 (A4), LappelDuVide_45 (A4), Lemur_46 (A4), LeoAvram_46 (A4), LittleB_46 (A4), LittleGuy_46 (A4), LochMonster_47 (A4), Lorenzo_46 (A4), Lunsford_47 (A4), Maverick_46 (A4), Maxo_47 (A4), Mazhar510_46 (A4), Medusa_46 (A4), MeeZee_46 (A4), Melvin_48 (A4), Millski_45 (A4), Miramae_45 (A4), Morpher26_45 (A4), Morrow_47 (A4), Mundrea_45 (A4), Nebs_47 (A4), Nemo27_46 (A4), Noelle_46 (A4), NorthStar_45 (A4), NotAPhaseMom_46 (A4), Nyxis_46 (A4), OKaNui_46 (A4), Obama12_47 (A4), Ohfah_47 (A4), Palestino_45 (A4), PeaceMeal1_43 (A10), Peaches_46 (A4), Perplexer_45 (A4), PeterPeter_46 (A4), PetiteSangsue_45 (A4), Phacado_46 (A4), Felipe_47 (A4), Phighter1804_46 (A4), Phontbonne_46 (A4), Pipcraft_44 (A4), Polymorphads_47 (A4), Poompha_44 (A10), Pumbaa_46 (A4), Relief_45 (A4), Romney_46 (A4), Roosevelt_45 (A4), Ruin_46 (A4), Sabertooth_46 (A4), Scamp_46 (A4), Severus_43 (A10), Shaka_46 (A4), SheldonCooper_48 (A4), Shygu2_45 (A4), Skipitt_45 (A4), Sparxx_47 (A4), Spino_45 (A4), Stasia_45 (A4), Stink_44 (A4), Taquarus_46 (A4), Thanksgivukkah_45 (A4), TinaFeyge_46 (A4), Tinybot_45 (A4), TiroTheta9_46 (A4), Trike_43 (A10), TroyPia_47 (A4), TygerBlood_46 (A4), Ulysses_45 (A4), Wander_46 (A4), Wilbur_46 (A4), Wile_45 (A4), Wizard007_46 (A4), Xena_44 (A4), YoSam321_46 (A4),

Start 14:

- Found in 1 of 147 (0.7%) of genes in pham
- Manual Annotations of this start: 1 of 143
- Called 100.0% of time when present
- Phage (with cluster) where this start called: Anon_44 (A15),

Summary by clusters:

There are 5 clusters represented in this pham: A15, A2, A4, A7, A10,

Info for manual annotations of cluster A10:

- Start number 9 was manually annotated 6 times for cluster A10.

Info for manual annotations of cluster A15:

- Start number 14 was manually annotated 1 time for cluster A15.

Info for manual annotations of cluster A2:

- Start number 6 was manually annotated 1 time for cluster A2.
- Start number 7 was manually annotated 1 time for cluster A2.

Info for manual annotations of cluster A4:

- Start number 9 was manually annotated 133 times for cluster A4.

Info for manual annotations of cluster A7:

- Start number 4 was manually annotated 1 time for cluster A7.

Gene Information:

Gene: AbbysRanger_45 Start: 31867, Stop: 31544, Start Num: 9

Candidate Starts for AbbysRanger_45:

(Start: 9 @31867 has 139 MA's), (15, 31768), (16, 31759), (17, 31744), (20, 31714), (27, 31594),

Gene: Abdiel_46 Start: 31881, Stop: 31579, Start Num: 9

Candidate Starts for Abdiel_46:

(1, 32151), (Start: 9 @31881 has 139 MA's), (20, 31749), (21, 31710), (25, 31662), (27, 31629),

Gene: Achebe_44 Start: 31850, Stop: 31527, Start Num: 9

Candidate Starts for Achebe_44:

(Start: 9 @31850 has 139 MA's), (15, 31751), (16, 31742), (17, 31727), (20, 31697), (27, 31577),

Gene: Albee_46 Start: 31880, Stop: 31578, Start Num: 9

Candidate Starts for Albee_46:

(1, 32150), (Start: 9 @31880 has 139 MA's), (20, 31748), (21, 31709), (25, 31661), (27, 31628),

Gene: Alberto7_47 Start: 32217, Stop: 31915, Start Num: 9

Candidate Starts for Alberto7_47:

(1, 32487), (Start: 9 @32217 has 139 MA's), (20, 32085), (21, 32046), (25, 31998), (27, 31965),

Gene: Annyong_46 Start: 31925, Stop: 31623, Start Num: 9

Candidate Starts for Annyong_46:

(1, 32195), (Start: 9 @31925 has 139 MA's), (20, 31793), (21, 31754), (25, 31706), (27, 31673),

Gene: Anon_44 Start: 29643, Stop: 29365, Start Num: 14

Candidate Starts for Anon_44:

(Start: 14 @29643 has 1 MA's), (25, 29448),

Gene: Arturo_45 Start: 32157, Stop: 31834, Start Num: 9

Candidate Starts for Arturo_45:

(Start: 9 @32157 has 139 MA's), (11, 32142), (20, 32004), (25, 31917), (27, 31884),

Gene: AvatarAhPeg_45 Start: 32379, Stop: 32056, Start Num: 9

Candidate Starts for AvatarAhPeg_45:

(Start: 9 @32379 has 139 MA's), (11, 32364), (16, 32271), (17, 32256), (20, 32226), (24, 32151), (27, 32106),

Gene: Avle17_46 Start: 31877, Stop: 31575, Start Num: 9

Candidate Starts for Avle17_46:

(Start: 9 @31877 has 139 MA's), (20, 31745), (21, 31706), (25, 31658), (27, 31625),

Gene: Baby16_46 Start: 31891, Stop: 31589, Start Num: 9

Candidate Starts for Baby16_46:

(1, 32161), (Start: 9 @31891 has 139 MA's), (20, 31759), (21, 31720), (25, 31672), (27, 31639),

Gene: Backyardigan_44 Start: 31883, Stop: 31560, Start Num: 9

Candidate Starts for Backyardigan_44:

(Start: 9 @31883 has 139 MA's), (15, 31784), (16, 31775), (17, 31760), (20, 31730), (27, 31610),

Gene: Badger_44 Start: 31851, Stop: 31528, Start Num: 9

Candidate Starts for Badger_44:

(Start: 9 @31851 has 139 MA's), (15, 31752), (16, 31743), (17, 31728), (20, 31698), (27, 31578),

Gene: BangNhom_47 Start: 32302, Stop: 32000, Start Num: 9

Candidate Starts for BangNhom_47:

(1, 32572), (Start: 9 @32302 has 139 MA's), (20, 32170), (21, 32131), (27, 32050),

Gene: Bartimeaus_46 Start: 31882, Stop: 31580, Start Num: 9

Candidate Starts for Bartimeaus_46:

(1, 32152), (Start: 9 @31882 has 139 MA's), (20, 31750), (21, 31711), (25, 31663), (27, 31630),

Gene: BellusTerra_47 Start: 31881, Stop: 31579, Start Num: 9

Candidate Starts for BellusTerra_47:

(Start: 9 @31881 has 139 MA's), (20, 31749), (21, 31710), (25, 31662), (27, 31629),

Gene: Blackmoor_46 Start: 31882, Stop: 31580, Start Num: 9

Candidate Starts for Blackmoor_46:

(1, 32152), (Start: 9 @31882 has 139 MA's), (20, 31750), (21, 31711), (25, 31663), (27, 31630),

Gene: Bombshell_46 Start: 31877, Stop: 31575, Start Num: 9

Candidate Starts for Bombshell_46:

(1, 32147), (Start: 9 @31877 has 139 MA's), (20, 31745), (21, 31706), (25, 31658), (27, 31625),

Gene: Broseidon_46 Start: 31882, Stop: 31580, Start Num: 9

Candidate Starts for Broseidon_46:

(1, 32152), (Start: 9 @31882 has 139 MA's), (20, 31750), (21, 31711), (25, 31663), (27, 31630),

Gene: Bruiser_45 Start: 31880, Stop: 31578, Start Num: 9

Candidate Starts for Bruiser_45:

(Start: 9 @31880 has 139 MA's), (20, 31748), (21, 31709), (25, 31661), (27, 31628),

Gene: BubbleTrouble_45 Start: 31880, Stop: 31578, Start Num: 9

Candidate Starts for BubbleTrouble_45:

(1, 32150), (Start: 9 @31880 has 139 MA's), (20, 31748), (21, 31709), (25, 31661), (27, 31628),

Gene: Bumblebee11_44 Start: 31853, Stop: 31530, Start Num: 9

Candidate Starts for Bumblebee11_44:

(Start: 9 @31853 has 139 MA's), (15, 31754), (16, 31745), (17, 31730), (20, 31700), (27, 31580),

Gene: Burger_44 Start: 31880, Stop: 31578, Start Num: 9

Candidate Starts for Burger_44:

(1, 32150), (Start: 9 @31880 has 139 MA's), (20, 31748), (21, 31709), (25, 31661), (27, 31628),

Gene: Caelakin_46 Start: 31880, Stop: 31578, Start Num: 9

Candidate Starts for Caelakin_46:

(1, 32150), (Start: 9 @31880 has 139 MA's), (20, 31748), (21, 31709), (25, 31661), (27, 31628),

Gene: Camperdownii_44 Start: 31553, Stop: 31251, Start Num: 9

Candidate Starts for Camperdownii_44:

(Start: 9 @31553 has 139 MA's), (20, 31421), (21, 31382), (25, 31334), (27, 31301),

Gene: CentreCat_46 Start: 31883, Stop: 31581, Start Num: 9

Candidate Starts for CentreCat_46:

(1, 32153), (Start: 9 @31883 has 139 MA's), (20, 31751), (21, 31712), (25, 31664), (27, 31631),

Gene: Cerulean_47 Start: 32303, Stop: 32001, Start Num: 9

Candidate Starts for Cerulean_47:

(1, 32573), (Start: 9 @32303 has 139 MA's), (20, 32171), (21, 32132), (27, 32051),

Gene: ChampagnePapi_48 Start: 32302, Stop: 32000, Start Num: 9

Candidate Starts for ChampagnePapi_48:

(1, 32572), (Start: 9 @32302 has 139 MA's), (20, 32170), (21, 32131), (27, 32050),

Gene: Chaph_46 Start: 31891, Stop: 31589, Start Num: 9

Candidate Starts for Chaph_46:

(1, 32161), (Start: 9 @31891 has 139 MA's), (20, 31759), (21, 31720), (25, 31672), (27, 31639),

Gene: Cici_45 Start: 31868, Stop: 31545, Start Num: 9

Candidate Starts for Cici_45:

(Start: 9 @31868 has 139 MA's), (15, 31769), (16, 31760), (17, 31745), (20, 31715), (27, 31595),

Gene: Cindaradix_43 Start: 31493, Stop: 31170, Start Num: 9

Candidate Starts for Cindaradix_43:

(Start: 9 @31493 has 139 MA's), (16, 31385), (20, 31340), (24, 31265), (27, 31220),

Gene: Cintron_45 Start: 31860, Stop: 31558, Start Num: 9

Candidate Starts for Cintron_45:

(1, 32130), (Start: 9 @31860 has 139 MA's), (20, 31728), (21, 31689), (25, 31641), (27, 31608),

Gene: Citius_46 Start: 31901, Stop: 31599, Start Num: 9
Candidate Starts for Citius_46:
(1, 32171), (Start: 9 @31901 has 139 MA's), (20, 31769), (21, 31730), (25, 31682), (27, 31649),

Gene: Clarenza_45 Start: 31877, Stop: 31575, Start Num: 9
Candidate Starts for Clarenza_45:
(1, 32147), (Start: 9 @31877 has 139 MA's), (20, 31745), (21, 31706), (25, 31658), (27, 31625),

Gene: Cocoaberry_46 Start: 31884, Stop: 31582, Start Num: 9
Candidate Starts for Cocoaberry_46:
(Start: 9 @31884 has 139 MA's), (20, 31752), (21, 31713), (25, 31665), (27, 31632),

Gene: Commander_46 Start: 31879, Stop: 31577, Start Num: 9
Candidate Starts for Commander_46:
(1, 32149), (Start: 9 @31879 has 139 MA's), (20, 31747), (21, 31708), (25, 31660), (27, 31627),

Gene: Connomayer_46 Start: 31880, Stop: 31578, Start Num: 9
Candidate Starts for Connomayer_46:
(1, 32150), (Start: 9 @31880 has 139 MA's), (20, 31748), (21, 31709), (25, 31661), (27, 31628),

Gene: Datway_45 Start: 31839, Stop: 31516, Start Num: 9
Candidate Starts for Datway_45:
(Start: 9 @31839 has 139 MA's), (16, 31731), (27, 31566),

Gene: Deano_45 Start: 31888, Stop: 31586, Start Num: 9
Candidate Starts for Deano_45:
(Start: 9 @31888 has 139 MA's), (12, 31846), (20, 31756), (21, 31717), (25, 31669), (27, 31636),

Gene: Dhanush_46 Start: 31883, Stop: 31581, Start Num: 9
Candidate Starts for Dhanush_46:
(1, 32153), (Start: 9 @31883 has 139 MA's), (20, 31751), (21, 31712), (25, 31664), (27, 31631),

Gene: DirtyDunning_45 Start: 31898, Stop: 31575, Start Num: 9
Candidate Starts for DirtyDunning_45:
(Start: 9 @31898 has 139 MA's), (11, 31883), (20, 31745), (21, 31706), (25, 31658), (27, 31625),

Gene: Drake94_43 Start: 30743, Stop: 30387, Start Num: 9
Candidate Starts for Drake94_43:
(3, 30887), (Start: 9 @30743 has 139 MA's), (18, 30560), (24, 30482),

Gene: Druantia_46 Start: 31883, Stop: 31581, Start Num: 9
Candidate Starts for Druantia_46:
(1, 32153), (Start: 9 @31883 has 139 MA's), (20, 31751), (21, 31712), (25, 31664), (27, 31631),

Gene: Eagle_46 Start: 31905, Stop: 31603, Start Num: 9
Candidate Starts for Eagle_46:
(1, 32175), (Start: 9 @31905 has 139 MA's), (20, 31773), (21, 31734), (25, 31686), (27, 31653),

Gene: Eapen_46 Start: 31875, Stop: 31573, Start Num: 9
Candidate Starts for Eapen_46:
(1, 32145), (Start: 9 @31875 has 139 MA's), (20, 31743), (21, 31704), (25, 31656), (27, 31623),

Gene: Eris_45 Start: 31880, Stop: 31578, Start Num: 9

Candidate Starts for Eris_45:

(1, 32150), (Start: 9 @31880 has 139 MA's), (20, 31748), (21, 31709), (25, 31661), (27, 31628),

Gene: Eros_46 Start: 31882, Stop: 31580, Start Num: 9

Candidate Starts for Eros_46:

(1, 32152), (Start: 9 @31882 has 139 MA's), (20, 31750), (21, 31711), (25, 31663), (27, 31630),

Gene: Eurydice_47 Start: 31877, Stop: 31575, Start Num: 9

Candidate Starts for Eurydice_47:

(1, 32147), (Start: 9 @31877 has 139 MA's), (20, 31745), (21, 31706), (25, 31658), (27, 31625),

Gene: Florean_46 Start: 31879, Stop: 31577, Start Num: 9

Candidate Starts for Florean_46:

(1, 32149), (Start: 9 @31879 has 139 MA's), (20, 31747), (21, 31708), (25, 31660), (27, 31627),

Gene: Flux_46 Start: 31879, Stop: 31577, Start Num: 9

Candidate Starts for Flux_46:

(1, 32149), (Start: 9 @31879 has 139 MA's), (20, 31747), (21, 31708), (25, 31660), (27, 31627),

Gene: Funston_45 Start: 31880, Stop: 31578, Start Num: 9

Candidate Starts for Funston_45:

(Start: 9 @31880 has 139 MA's), (20, 31748), (21, 31709), (25, 31661), (27, 31628),

Gene: Gadost_46 Start: 31884, Stop: 31582, Start Num: 9

Candidate Starts for Gadost_46:

(Start: 9 @31884 has 139 MA's), (20, 31752), (21, 31713), (25, 31665), (27, 31632),

Gene: HamSlice_45 Start: 31878, Stop: 31576, Start Num: 9

Candidate Starts for HamSlice_45:

(1, 32148), (Start: 9 @31878 has 139 MA's), (20, 31746), (21, 31707), (25, 31659), (27, 31626),

Gene: Happiness_45 Start: 31885, Stop: 31583, Start Num: 9

Candidate Starts for Happiness_45:

(1, 32155), (Start: 9 @31885 has 139 MA's), (20, 31753), (21, 31714), (25, 31666), (27, 31633),

Gene: Holli_45 Start: 31670, Stop: 31368, Start Num: 9

Candidate Starts for Holli_45:

(1, 31940), (Start: 9 @31670 has 139 MA's), (20, 31538), (21, 31499), (25, 31451), (27, 31418),

Gene: Houdini22_46 Start: 31884, Stop: 31582, Start Num: 9

Candidate Starts for Houdini22_46:

(Start: 9 @31884 has 139 MA's), (20, 31752), (21, 31713), (25, 31665), (27, 31632),

Gene: ICleared_46 Start: 31909, Stop: 31607, Start Num: 9

Candidate Starts for ICleared_46:

(1, 32179), (Start: 9 @31909 has 139 MA's), (20, 31777), (21, 31738), (25, 31690), (27, 31657),

Gene: Iceman_46 Start: 32166, Stop: 31864, Start Num: 9

Candidate Starts for Iceman_46:

(1, 32436), (Start: 9 @32166 has 139 MA's), (20, 32034), (21, 31995), (25, 31947), (27, 31914),

Gene: Iracema64_47 Start: 32144, Stop: 31842, Start Num: 9

Candidate Starts for Iracema64_47:

(1, 32414), (Start: 9 @32144 has 139 MA's), (20, 32012), (21, 31973), (25, 31925), (27, 31892),

Gene: Jaykayelowell_44 Start: 31873, Stop: 31571, Start Num: 9

Candidate Starts for Jaykayelowell_44:

(1, 32143), (Start: 9 @31873 has 139 MA's), (20, 31741), (21, 31702), (25, 31654), (27, 31621),

Gene: JetBlade_46 Start: 31874, Stop: 31572, Start Num: 9

Candidate Starts for JetBlade_46:

(1, 32144), (Start: 9 @31874 has 139 MA's), (20, 31742), (21, 31703), (25, 31655), (27, 31622),

Gene: JoongJeon_45 Start: 31877, Stop: 31575, Start Num: 9

Candidate Starts for JoongJeon_45:

(Start: 9 @31877 has 139 MA's), (20, 31745), (21, 31706), (25, 31658), (27, 31625),

Gene: Journey13_41 Start: 30529, Stop: 30176, Start Num: 6

Candidate Starts for Journey13_41:

(Start: 6 @30529 has 1 MA's), (Start: 7 @30526 has 1 MA's), (8, 30508), (10, 30484), (25, 30256),

Gene: KFPoly_45 Start: 31874, Stop: 31572, Start Num: 9

Candidate Starts for KFPoly_45:

(1, 32144), (Start: 9 @31874 has 139 MA's), (20, 31742), (21, 31703), (25, 31655), (27, 31622),

Gene: Kamy_46 Start: 31882, Stop: 31580, Start Num: 9

Candidate Starts for Kamy_46:

(1, 32152), (Start: 9 @31882 has 139 MA's), (20, 31750), (21, 31711), (25, 31663), (27, 31630),

Gene: Katalie136_45 Start: 31853, Stop: 31530, Start Num: 9

Candidate Starts for Katalie136_45:

(Start: 9 @31853 has 139 MA's), (15, 31754), (16, 31745), (17, 31730), (20, 31700), (27, 31580),

Gene: Kingmustik0402_46 Start: 31869, Stop: 31567, Start Num: 9

Candidate Starts for Kingmustik0402_46:

(1, 32139), (Start: 9 @31869 has 139 MA's), (20, 31737), (21, 31698), (25, 31650), (27, 31617),

Gene: KittenMittens_42 Start: 30751, Stop: 30395, Start Num: 9

Candidate Starts for KittenMittens_42:

(3, 30895), (Start: 9 @30751 has 139 MA's), (18, 30568), (24, 30490),

Gene: Koreni_45 Start: 31561, Stop: 31259, Start Num: 9

Candidate Starts for Koreni_45:

(1, 31831), (Start: 9 @31561 has 139 MA's), (20, 31429), (21, 31390), (25, 31342), (27, 31309),

Gene: Kratak_46 Start: 32040, Stop: 31717, Start Num: 9

Candidate Starts for Kratak_46:

(Start: 9 @32040 has 139 MA's), (11, 32025), (20, 31887), (25, 31800), (27, 31767),

Gene: Kremtemulon_44 Start: 31831, Stop: 31529, Start Num: 9

Candidate Starts for Kremtemulon_44:

(1, 32101), (Start: 9 @31831 has 139 MA's), (20, 31699), (21, 31660), (27, 31579),

Gene: Kyee_46 Start: 31878, Stop: 31576, Start Num: 9

Candidate Starts for Kyee_46:

(Start: 9 @31878 has 139 MA's), (20, 31746), (21, 31707), (25, 31659), (27, 31626),

Gene: LHTSCC_48 Start: 32302, Stop: 32000, Start Num: 9

Candidate Starts for LHTSCC_48:

(1, 32572), (Start: 9 @32302 has 139 MA's), (20, 32170), (21, 32131), (27, 32050),

Gene: LappelDuVide_45 Start: 31879, Stop: 31577, Start Num: 9

Candidate Starts for LappelDuVide_45:

(1, 32149), (Start: 9 @31879 has 139 MA's), (20, 31747), (21, 31708), (25, 31660), (27, 31627),

Gene: Lemur_46 Start: 31877, Stop: 31575, Start Num: 9

Candidate Starts for Lemur_46:

(1, 32147), (Start: 9 @31877 has 139 MA's), (20, 31745), (21, 31706), (25, 31658), (27, 31625),

Gene: LeoAvram_46 Start: 31880, Stop: 31578, Start Num: 9

Candidate Starts for LeoAvram_46:

(1, 32150), (Start: 9 @31880 has 139 MA's), (20, 31748), (21, 31709), (25, 31661), (27, 31628),

Gene: LittleB_46 Start: 31881, Stop: 31579, Start Num: 9

Candidate Starts for LittleB_46:

(1, 32151), (Start: 9 @31881 has 139 MA's), (20, 31749), (21, 31710), (25, 31662), (27, 31629),

Gene: LittleGuy_46 Start: 31776, Stop: 31474, Start Num: 9

Candidate Starts for LittleGuy_46:

(1, 32046), (Start: 9 @31776 has 139 MA's), (20, 31644), (21, 31605), (25, 31557), (27, 31524),

Gene: LochMonster_47 Start: 32116, Stop: 31814, Start Num: 9

Candidate Starts for LochMonster_47:

(1, 32386), (Start: 9 @32116 has 139 MA's), (12, 32074), (20, 31984), (21, 31945), (25, 31897), (27, 31864),

Gene: Lorenzo_46 Start: 31880, Stop: 31578, Start Num: 9

Candidate Starts for Lorenzo_46:

(1, 32150), (Start: 9 @31880 has 139 MA's), (20, 31748), (21, 31709), (25, 31661), (27, 31628),

Gene: Lunsford_47 Start: 31874, Stop: 31572, Start Num: 9

Candidate Starts for Lunsford_47:

(1, 32144), (Start: 9 @31874 has 139 MA's), (20, 31742), (21, 31703), (25, 31655), (27, 31622),

Gene: Maverick_46 Start: 31880, Stop: 31578, Start Num: 9

Candidate Starts for Maverick_46:

(Start: 9 @31880 has 139 MA's), (20, 31748), (21, 31709), (25, 31661), (27, 31628),

Gene: Maxo_47 Start: 31882, Stop: 31580, Start Num: 9

Candidate Starts for Maxo_47:

(1, 32152), (Start: 9 @31882 has 139 MA's), (20, 31750), (21, 31711), (25, 31663), (27, 31630),

Gene: Mazhar510_46 Start: 31881, Stop: 31579, Start Num: 9

Candidate Starts for Mazhar510_46:

(Start: 9 @31881 has 139 MA's), (20, 31749), (21, 31710), (25, 31662), (27, 31629),

Gene: Medusa_46 Start: 31879, Stop: 31577, Start Num: 9

Candidate Starts for Medusa_46:

(1, 32149), (Start: 9 @31879 has 139 MA's), (20, 31747), (21, 31708), (25, 31660), (27, 31627),

Gene: MeeZee_46 Start: 31877, Stop: 31575, Start Num: 9

Candidate Starts for MeeZee_46:

(1, 32147), (Start: 9 @31877 has 139 MA's), (20, 31745), (21, 31706), (25, 31658), (27, 31625),

Gene: Melvin_48 Start: 31875, Stop: 31573, Start Num: 9

Candidate Starts for Melvin_48:

(1, 32145), (Start: 9 @31875 has 139 MA's), (20, 31743), (21, 31704), (25, 31656), (27, 31623),

Gene: Millski_45 Start: 31881, Stop: 31579, Start Num: 9

Candidate Starts for Millski_45:

(1, 32151), (Start: 9 @31881 has 139 MA's), (20, 31749), (21, 31710), (25, 31662), (27, 31629),

Gene: Miramae_45 Start: 32041, Stop: 31718, Start Num: 9

Candidate Starts for Miramae_45:

(Start: 9 @32041 has 139 MA's), (11, 32026), (16, 31933), (17, 31918), (20, 31888), (24, 31813), (27, 31768),

Gene: MissWhite_46 Start: 30606, Stop: 30256, Start Num: 7

Candidate Starts for MissWhite_46:

(Start: 7 @30606 has 1 MA's), (8, 30588), (19, 30426), (25, 30336), (26, 30315),

Gene: Morpher26_45 Start: 31874, Stop: 31551, Start Num: 9

Candidate Starts for Morpher26_45:

(Start: 9 @31874 has 139 MA's), (15, 31775), (16, 31766), (17, 31751), (20, 31721), (27, 31601),

Gene: Morrow_47 Start: 31886, Stop: 31584, Start Num: 9

Candidate Starts for Morrow_47:

(1, 32156), (Start: 9 @31886 has 139 MA's), (20, 31754), (21, 31715), (25, 31667), (27, 31634),

Gene: Mundrea_45 Start: 31861, Stop: 31538, Start Num: 9

Candidate Starts for Mundrea_45:

(Start: 9 @31861 has 139 MA's), (16, 31753), (17, 31738), (20, 31708), (24, 31633), (27, 31588),

Gene: Nebs_47 Start: 31880, Stop: 31578, Start Num: 9

Candidate Starts for Nebs_47:

(1, 32150), (Start: 9 @31880 has 139 MA's), (20, 31748), (21, 31709), (25, 31661), (27, 31628),

Gene: Nemo27_46 Start: 31879, Stop: 31577, Start Num: 9

Candidate Starts for Nemo27_46:

(Start: 9 @31879 has 139 MA's), (20, 31747), (21, 31708), (25, 31660), (27, 31627),

Gene: Noelle_46 Start: 32163, Stop: 31840, Start Num: 9

Candidate Starts for Noelle_46:

(Start: 9 @32163 has 139 MA's), (16, 32055), (20, 32010), (27, 31890),

Gene: NorthStar_45 Start: 31880, Stop: 31578, Start Num: 9

Candidate Starts for NorthStar_45:

(1, 32150), (Start: 9 @31880 has 139 MA's), (20, 31748), (21, 31709), (25, 31661), (27, 31628),

Gene: NotAPhaseMom_46 Start: 31884, Stop: 31582, Start Num: 9

Candidate Starts for NotAPhaseMom_46:

(Start: 9 @31884 has 139 MA's), (20, 31752), (21, 31713), (25, 31665), (27, 31632),

Gene: Nyxis_46 Start: 31770, Stop: 31468, Start Num: 9
Candidate Starts for Nyxis_46:
(1, 32040), (Start: 9 @31770 has 139 MA's), (20, 31638), (21, 31599), (25, 31551), (27, 31518),

Gene: OKaNui_46 Start: 31930, Stop: 31628, Start Num: 9
Candidate Starts for OKaNui_46:
(1, 32200), (Start: 9 @31930 has 139 MA's), (20, 31798), (21, 31759), (25, 31711), (27, 31678),

Gene: Obama12_47 Start: 32304, Stop: 32002, Start Num: 9
Candidate Starts for Obama12_47:
(1, 32574), (Start: 9 @32304 has 139 MA's), (20, 32172), (21, 32133), (27, 32052),

Gene: Ohfah_47 Start: 31880, Stop: 31578, Start Num: 9
Candidate Starts for Ohfah_47:
(1, 32150), (Start: 9 @31880 has 139 MA's), (20, 31748), (21, 31709), (25, 31661), (27, 31628),

Gene: PP_50 Start: 36311, Stop: 35883, Start Num: 4
Candidate Starts for PP_50:
(2, 36377), (Start: 4 @36311 has 1 MA's), (5, 36260), (13, 36179), (22, 35999), (23, 35981), (25, 35966), (28, 35918), (29, 35906),

Gene: Palestino_45 Start: 31880, Stop: 31578, Start Num: 9
Candidate Starts for Palestino_45:
(1, 32150), (Start: 9 @31880 has 139 MA's), (20, 31748), (21, 31709), (25, 31661), (27, 31628),

Gene: PeaceMeal1_43 Start: 30752, Stop: 30396, Start Num: 9
Candidate Starts for PeaceMeal1_43:
(3, 30896), (Start: 9 @30752 has 139 MA's), (18, 30569), (24, 30491),

Gene: Peaches_46 Start: 31879, Stop: 31577, Start Num: 9
Candidate Starts for Peaches_46:
(1, 32149), (Start: 9 @31879 has 139 MA's), (20, 31747), (21, 31708), (25, 31660), (27, 31627),

Gene: Perplexer_45 Start: 31850, Stop: 31527, Start Num: 9
Candidate Starts for Perplexer_45:
(Start: 9 @31850 has 139 MA's), (15, 31751), (16, 31742), (17, 31727), (20, 31697), (27, 31577),

Gene: PeterPeter_46 Start: 31877, Stop: 31575, Start Num: 9
Candidate Starts for PeterPeter_46:
(1, 32147), (Start: 9 @31877 has 139 MA's), (20, 31745), (21, 31706), (25, 31658), (27, 31625),

Gene: PetiteSangsue_45 Start: 31853, Stop: 31530, Start Num: 9
Candidate Starts for PetiteSangsue_45:
(Start: 9 @31853 has 139 MA's), (15, 31754), (16, 31745), (17, 31730), (20, 31700), (27, 31580),

Gene: Phacado_46 Start: 31879, Stop: 31577, Start Num: 9
Candidate Starts for Phacado_46:
(Start: 9 @31879 has 139 MA's), (20, 31747), (21, 31708), (25, 31660), (27, 31627),

Gene: Phelipe_47 Start: 31880, Stop: 31578, Start Num: 9
Candidate Starts for Phelipe_47:
(1, 32150), (Start: 9 @31880 has 139 MA's), (20, 31748), (21, 31709), (25, 31661), (27, 31628),

Gene: Phighter1804_46 Start: 31943, Stop: 31620, Start Num: 9
Candidate Starts for Phighter1804_46:
(Start: 9 @31943 has 139 MA's), (11, 31928), (20, 31790), (21, 31751), (25, 31703), (27, 31670),

Gene: Phontbonne_46 Start: 31771, Stop: 31469, Start Num: 9
Candidate Starts for Phontbonne_46:
(1, 32041), (Start: 9 @31771 has 139 MA's), (20, 31639), (21, 31600), (25, 31552), (27, 31519),

Gene: Pipcraft_44 Start: 31880, Stop: 31578, Start Num: 9
Candidate Starts for Pipcraft_44:
(1, 32150), (Start: 9 @31880 has 139 MA's), (20, 31748), (21, 31709), (25, 31661), (27, 31628),

Gene: Polymorphads_47 Start: 31873, Stop: 31571, Start Num: 9
Candidate Starts for Polymorphads_47:
(1, 32143), (Start: 9 @31873 has 139 MA's), (20, 31741), (21, 31702), (25, 31654), (27, 31621),

Gene: Poompha_44 Start: 30750, Stop: 30394, Start Num: 9
Candidate Starts for Poompha_44:
(3, 30894), (Start: 9 @30750 has 139 MA's), (18, 30567), (24, 30489),

Gene: Pumbaa_46 Start: 31825, Stop: 31523, Start Num: 9
Candidate Starts for Pumbaa_46:
(1, 32095), (Start: 9 @31825 has 139 MA's), (20, 31693), (21, 31654), (25, 31606), (27, 31573),

Gene: Relief_45 Start: 31877, Stop: 31575, Start Num: 9
Candidate Starts for Relief_45:
(1, 32147), (Start: 9 @31877 has 139 MA's), (20, 31745), (21, 31706), (25, 31658), (27, 31625),

Gene: Romney_46 Start: 31877, Stop: 31575, Start Num: 9
Candidate Starts for Romney_46:
(1, 32147), (Start: 9 @31877 has 139 MA's), (12, 31835), (20, 31745), (21, 31706), (25, 31658), (27, 31625),

Gene: Roosevelt_45 Start: 31882, Stop: 31580, Start Num: 9
Candidate Starts for Roosevelt_45:
(1, 32152), (Start: 9 @31882 has 139 MA's), (20, 31750), (21, 31711), (25, 31663), (27, 31630),

Gene: Ruin_46 Start: 31873, Stop: 31571, Start Num: 9
Candidate Starts for Ruin_46:
(1, 32143), (Start: 9 @31873 has 139 MA's), (20, 31741), (21, 31702), (25, 31654), (27, 31621),

Gene: Sabertooth_46 Start: 31882, Stop: 31580, Start Num: 9
Candidate Starts for Sabertooth_46:
(1, 32152), (Start: 9 @31882 has 139 MA's), (20, 31750), (21, 31711), (25, 31663), (27, 31630),

Gene: Scamp_46 Start: 31882, Stop: 31580, Start Num: 9
Candidate Starts for Scamp_46:
(1, 32152), (Start: 9 @31882 has 139 MA's), (20, 31750), (21, 31711), (25, 31663), (27, 31630),

Gene: Severus_43 Start: 30750, Stop: 30394, Start Num: 9
Candidate Starts for Severus_43:
(3, 30894), (Start: 9 @30750 has 139 MA's), (18, 30567), (24, 30489),

Gene: Shaka_46 Start: 31877, Stop: 31575, Start Num: 9
Candidate Starts for Shaka_46:
(1, 32147), (Start: 9 @31877 has 139 MA's), (20, 31745), (21, 31706), (25, 31658), (27, 31625),

Gene: SheldonCooper_48 Start: 32303, Stop: 32001, Start Num: 9
Candidate Starts for SheldonCooper_48:
(1, 32573), (Start: 9 @32303 has 139 MA's), (20, 32171), (21, 32132), (27, 32051),

Gene: Shygu2_45 Start: 31853, Stop: 31530, Start Num: 9
Candidate Starts for Shygu2_45:
(Start: 9 @31853 has 139 MA's), (20, 31700), (21, 31661), (27, 31580),

Gene: Skipitt_45 Start: 31874, Stop: 31572, Start Num: 9
Candidate Starts for Skipitt_45:
(1, 32144), (Start: 9 @31874 has 139 MA's), (20, 31742), (21, 31703), (25, 31655), (27, 31622),

Gene: Sparxx_47 Start: 31875, Stop: 31573, Start Num: 9
Candidate Starts for Sparxx_47:
(1, 32145), (Start: 9 @31875 has 139 MA's), (20, 31743), (21, 31704), (25, 31656), (27, 31623),

Gene: Spino_45 Start: 31880, Stop: 31578, Start Num: 9
Candidate Starts for Spino_45:
(1, 32150), (Start: 9 @31880 has 139 MA's), (20, 31748), (21, 31709), (25, 31661), (27, 31628),

Gene: Stasia_45 Start: 31752, Stop: 31450, Start Num: 9
Candidate Starts for Stasia_45:
(Start: 9 @31752 has 139 MA's), (25, 31533),

Gene: Stink_44 Start: 32321, Stop: 31998, Start Num: 9
Candidate Starts for Stink_44:
(Start: 9 @32321 has 139 MA's), (11, 32306), (16, 32213), (17, 32198), (20, 32168), (24, 32093), (27, 32048),

Gene: Taquarus_46 Start: 31883, Stop: 31581, Start Num: 9
Candidate Starts for Taquarus_46:
(1, 32153), (Start: 9 @31883 has 139 MA's), (20, 31751), (21, 31712), (25, 31664), (27, 31631),

Gene: Thanksgivukkah_45 Start: 31878, Stop: 31576, Start Num: 9
Candidate Starts for Thanksgivukkah_45:
(1, 32148), (Start: 9 @31878 has 139 MA's), (20, 31746), (21, 31707), (25, 31659), (27, 31626),

Gene: TinaFeyge_46 Start: 31875, Stop: 31573, Start Num: 9
Candidate Starts for TinaFeyge_46:
(1, 32145), (Start: 9 @31875 has 139 MA's), (20, 31743), (21, 31704), (25, 31656), (27, 31623),

Gene: Tinybot_45 Start: 31907, Stop: 31605, Start Num: 9
Candidate Starts for Tinybot_45:
(1, 32177), (Start: 9 @31907 has 139 MA's), (20, 31775), (21, 31736), (25, 31688), (27, 31655),

Gene: TiroTheta9_46 Start: 31874, Stop: 31572, Start Num: 9
Candidate Starts for TiroTheta9_46:
(1, 32144), (Start: 9 @31874 has 139 MA's), (20, 31742), (21, 31703), (25, 31655), (27, 31622),

Gene: Trike_43 Start: 30758, Stop: 30402, Start Num: 9
Candidate Starts for Trike_43:
(3, 30902), (Start: 9 @30758 has 139 MA's), (18, 30575), (24, 30497),

Gene: TroyPia_47 Start: 31878, Stop: 31576, Start Num: 9
Candidate Starts for TroyPia_47:
(1, 32148), (Start: 9 @31878 has 139 MA's), (20, 31746), (21, 31707), (25, 31659), (27, 31626),

Gene: TygerBlood_46 Start: 31880, Stop: 31578, Start Num: 9
Candidate Starts for TygerBlood_46:
(1, 32150), (Start: 9 @31880 has 139 MA's), (20, 31748), (21, 31709), (25, 31661), (27, 31628),

Gene: Ulysses_45 Start: 31557, Stop: 31255, Start Num: 9
Candidate Starts for Ulysses_45:
(1, 31827), (Start: 9 @31557 has 139 MA's), (20, 31425), (21, 31386), (25, 31338), (27, 31305),

Gene: Wander_46 Start: 31877, Stop: 31575, Start Num: 9
Candidate Starts for Wander_46:
(Start: 9 @31877 has 139 MA's), (20, 31745), (21, 31706), (25, 31658), (27, 31625),

Gene: Wilbur_46 Start: 31877, Stop: 31575, Start Num: 9
Candidate Starts for Wilbur_46:
(1, 32147), (Start: 9 @31877 has 139 MA's), (12, 31835), (20, 31745), (21, 31706), (25, 31658), (27, 31625),

Gene: Wile_45 Start: 31884, Stop: 31561, Start Num: 9
Candidate Starts for Wile_45:
(Start: 9 @31884 has 139 MA's), (15, 31785), (16, 31776), (17, 31761), (20, 31731), (27, 31611),

Gene: Wizard007_46 Start: 31885, Stop: 31583, Start Num: 9
Candidate Starts for Wizard007_46:
(1, 32155), (Start: 9 @31885 has 139 MA's), (20, 31753), (21, 31714), (25, 31666), (27, 31633),

Gene: Xena_44 Start: 31850, Stop: 31527, Start Num: 9
Candidate Starts for Xena_44:
(Start: 9 @31850 has 139 MA's), (15, 31751), (16, 31742), (17, 31727), (20, 31697), (27, 31577),

Gene: YoSam321_46 Start: 31874, Stop: 31572, Start Num: 9
Candidate Starts for YoSam321_46:
(1, 32144), (Start: 9 @31874 has 139 MA's), (20, 31742), (21, 31703), (25, 31655), (27, 31622),