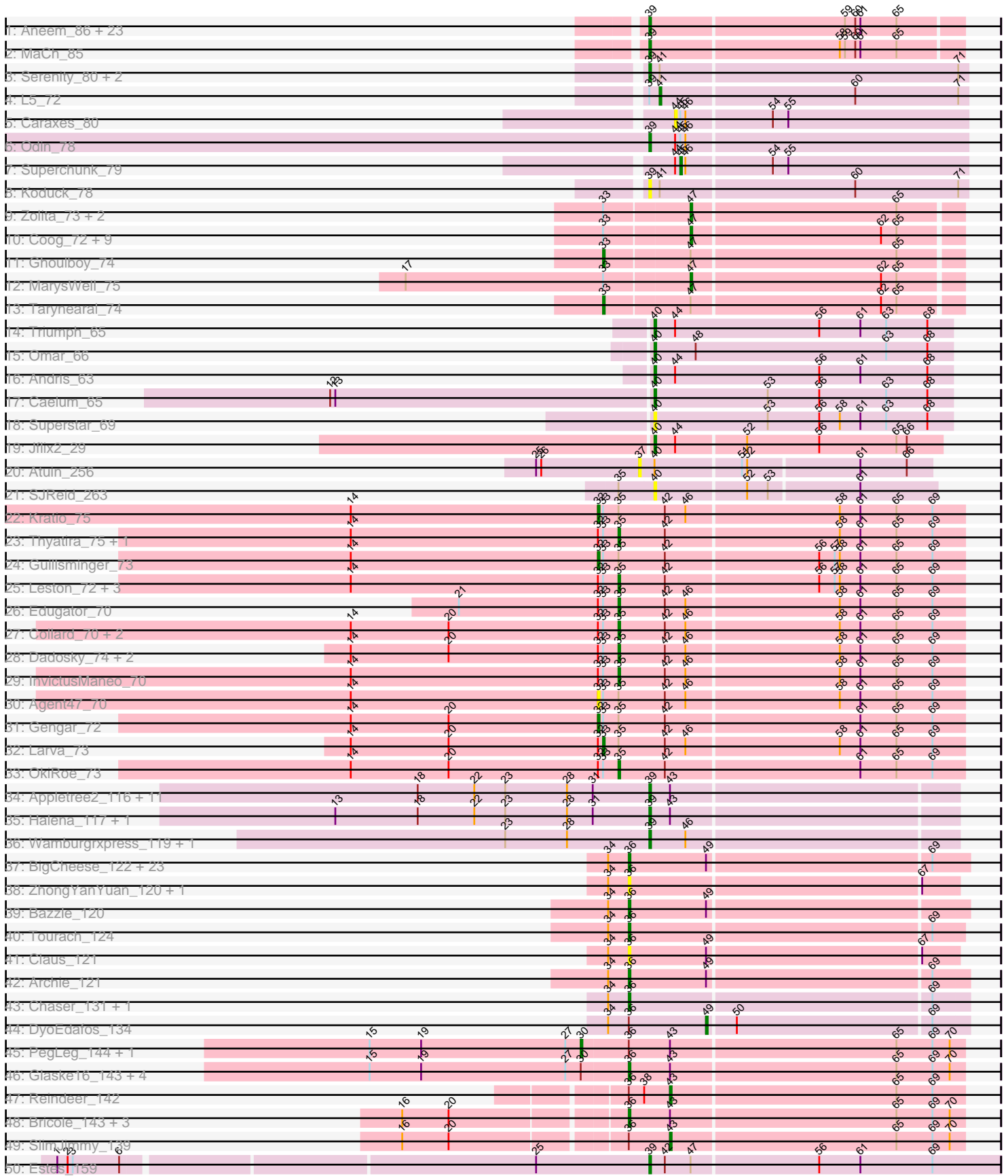


Pham 157660



Note: Tracks are now grouped by subcluster and scaled. Switching in subcluster is indicated by changes in track color. Track scale is now set by default to display the region 30 bp upstream of start 1 to 30 bp downstream of the last possible start. If this default region is judged to be packed too tightly with annotated starts, the track will be further scaled to only show that region of the ORF with annotated starts. This action will be indicated by adding "Zoomed" to the title. For starts, yellow indicates the location of called starts comprised solely of Glimmer/GeneMark auto-annotations, green indicates the location of called starts with at least 1 manual gene annotation.

Pham 157660 Report

This analysis was run 04/13/24 on database version 558.

Pham number 157660 has 144 members, 16 are drafts.

Phages represented in each track:

- Track 1 : Aneem_86, Jabith_84, Ebony_85, Bud_80, Munch_85, Joselito_84, Sham4_81, Et2Brutus_84, TinyTimmy_83, Mabel_85, Lucivia_86, Bachome_83, Salz_80, Insomnia_83, Mulciber_83, Orange_85, Gilberta_82, Bowtie_82, Hutc2_81, Flaverint_86, Fibonacci_84, Petersenfast_79, Snape_85, Timothy_85
- Track 2 : MaCh_85
- Track 3 : Serenity_80, Jsquared_80, TipsytheTRex_76
- Track 4 : L5_72
- Track 5 : Caraxes_80
- Track 6 : Odin_78
- Track 7 : Superchunk_79
- Track 8 : Koduck_78
- Track 9 : Zolita_73, SydNat_74, Bluefalcon_70
- Track 10 : Coog_72, Bonamassa_75, Theia_74, Midas2_72, Swirley_75, HuhtaEnerson15_73, Cuco_74, LittleCherry_74, Micasa_73, Dublin_75
- Track 11 : Ghouboy_74
- Track 12 : MarysWell_75
- Track 13 : Tarynearal_74
- Track 14 : Triumph_65
- Track 15 : Omar_66
- Track 16 : Andris_63
- Track 17 : Caelum_65
- Track 18 : Superstar_69
- Track 19 : Jflix2_29
- Track 20 : Atuin_256
- Track 21 : SJReid_263
- Track 22 : Kratio_75
- Track 23 : Thyatira_75, Waterfoul_74
- Track 24 : Guillsminger_73
- Track 25 : Leston_72, Feyre_75, Miryou_77, Paola_72
- Track 26 : Edugator_70
- Track 27 : Collard_70, SoSeph_73, Heftyboy_73
- Track 28 : Dadosky_74, Psycho_72, AlleyCat_74
- Track 29 : InvictusManeo_70
- Track 30 : Agent47_70
- Track 31 : Gengar_72
- Track 32 : Larva_73
- Track 33 : OkiRoe_73

- Track 34 : Appletree2_116, Acquire49_117, OhShagHennessy_109, Rose5_118, Zaria_121, UPIE_116, LeBron_116, Wyatt2_117, AvadaKedavra_117, Tyson_118, Calm_124, CicholasNage_111
- Track 35 : Halena_117, MAckerman_115
- Track 36 : Wamburgrxpress_119, JoeDirt_120
- Track 37 : BigCheese_122, Netyap_121, Kahlid_122, Crossroads_125, LilDestine_119, DrSeegs_121, Gardann_122, Wigglewiggles_123, Loadrie_124, Breezona_123, Miley16_123, Wilder_123, MkaliMitinis3_125, Winky_123, Gabriela_122, Itos_123, Finemlucis_121, BobsGarage_122, GuuelaD_120, Lewan_125, Faith1_121, Nicholasp3_123, Zakai_125, Vetrix_122
- Track 38 : ZhongYanYuan_120, Baoshan_120
- Track 39 : Bazzle_120
- Track 40 : Tourach_124
- Track 41 : Claus_121
- Track 42 : Archie_121
- Track 43 : Chaser_131, Douge_133
- Track 44 : DyoEdafos_134
- Track 45 : PegLeg_144, Bongo_139
- Track 46 : Glaske16_143, Dulcita_141, LilhomieP_141, Diminimus_141, Skinny_147
- Track 47 : Reindeer_142
- Track 48 : Bricole_143, TyDawg_135, Auspice_142, IPhane7_139
- Track 49 : SlimJimmy_139
- Track 50 : Estes_159
- Track 51 : Rey_161
- Track 52 : Aziz_159
- Track 53 : MrMagoo_164
- Track 54 : Nanosmite_159

Summary of Final Annotations (See graph section above for start numbers):

The start number called the most often in the published annotations is 39, it was called in 44 of the 128 non-draft genes in the pham.

Genes that call this "Most Annotated" start:

- Acquire49_117, Aneem_86, Appletree2_116, AvadaKedavra_117, Aziz_159, Bachome_83, Bowtie_82, Bud_80, Calm_124, CicholasNage_111, Ebony_85, Estes_159, Et2Brutus_84, Fibonacci_84, Flaverint_86, Gilberta_82, Halena_117, Hutc2_81, Insomnia_83, Jabith_84, JoeDirt_120, Joselito_84, Jsquared_80, Koduck_78, LeBron_116, Lucivia_86, MAckerman_115, MaCh_85, Mabel_85, MrMagoo_164, Mulciber_83, Munch_85, Odin_78, OhShagHennessy_109, Orange_85, Petersenfast_79, Rose5_118, Salz_80, Serenity_80, Sham4_81, Snape_85, Timothy_85, TinyTimmy_83, TipsytheTRex_76, Tyson_118, UPIE_116, Wamburgrxpress_119, Wyatt2_117, Zaria_121,

Genes that have the "Most Annotated" start but do not call it:

- L5_72,

Genes that do not have the "Most Annotated" start:

- Agent47_70, AlleyCat_74, Andris_63, Archie_121, Atuin_256, Auspice_142, Baoshan_120, Bazzle_120, BigCheese_122, Bluefalcon_70, BobsGarage_122, Bonamassa_75, Bongo_139, Breezona_123, Bricole_143, Caelum_65, Caraxes_80, Chaser_131, Claus_121, Collard_70, Coog_72, Crossroads_125, Cuco_74, Dadosky_74, Diminimus_141, Douge_133, DrSeegs_121, Dublin_75, Dulcita_141, DyoEdafos_134, Edugator_70, Faith1_121, Feyre_75, Finemlucis_121, Gabriela_122, Gardann_122, Gengar_72, Ghoulboy_74, Glaske16_143, Guillsminger_73, GuelaD_120, Heftyboy_73, HuhtaEnerson15_73, IPHane7_139, InvictusManeo_70, Itos_123, Jflix2_29, Kahlid_122, Kratio_75, Larva_73, Leston_72, Lewan_125, LilDestine_119, LilhomieP_141, LittleCherry_74, Loadrie_124, MarysWell_75, Micasa_73, Midas2_72, Miley16_123, Miryou_77, MkaliMitinis3_125, Nanosmite_159, Netyap_121, Nicholasp3_123, OkiRoe_73, Omar_66, Paola_72, PegLeg_144, Psycho_72, Reindeer_142, Rey_161, SJReid_263, Skinny_147, SlimJimmy_139, SoSeph_73, Superchunk_79, Superstar_69, Swirley_75, SydNat_74, Tarynearal_74, Theia_74, Thyatira_75, Tourach_124, Triumph_65, TyDawg_135, Vatrix_122, Waterfoul_74, Wigglewiggle_123, Wilder_123, Winky_123, Zakai_125, ZhongYanYuan_120, Zolita_73,

Summary by start number:

Start 30:

- Found in 7 of 144 (4.9%) of genes in pham
- Manual Annotations of this start: 2 of 128
- Called 28.6% of time when present
- Phage (with cluster) where this start called: Bongo_139 (M1), PegLeg_144 (M1),

Start 32:

- Found in 20 of 144 (13.9%) of genes in pham
- Manual Annotations of this start: 3 of 128
- Called 20.0% of time when present
- Phage (with cluster) where this start called: Agent47_70 (K5), Gengar_72 (K5), Guillsminger_73 (K5), Kratio_75 (K5),

Start 33:

- Found in 36 of 144 (25.0%) of genes in pham
- Manual Annotations of this start: 3 of 128
- Called 8.3% of time when present
- Phage (with cluster) where this start called: Ghoulboy_74 (A5), Larva_73 (K5), Tarynearal_74 (A5),

Start 35:

- Found in 21 of 144 (14.6%) of genes in pham
- Manual Annotations of this start: 14 of 128
- Called 71.4% of time when present
- Phage (with cluster) where this start called: AlleyCat_74 (K5), Collard_70 (K5), Dadosky_74 (K5), Edugator_70 (K5), Feyre_75 (K5), Heftyboy_73 (K5), InvictusManeo_70 (K5), Leston_72 (K5), Miryou_77 (K5), OkiRoe_73 (K5), Paola_72 (K5), Psycho_72 (K5), SoSeph_73 (K5), Thyatira_75 (K5), Waterfoul_74 (K5),

Start 36:

- Found in 47 of 144 (32.6%) of genes in pham
- Manual Annotations of this start: 38 of 128
- Called 89.4% of time when present

- Phage (with cluster) where this start called: Archie_121 (L2), Auspice_142 (M1), Baoshan_120 (L2), Bazzle_120 (L2), BigCheese_122 (L2), BobsGarage_122 (L2), Breezona_123 (L2), Bricole_143 (M1), Chaser_131 (L4), Claus_121 (L2), Crossroads_125 (L2), Diminimus_141 (M1), Douge_133 (L4), DrSeegs_121 (L2), Dulcita_141 (M1), Faith1_121 (L2), Finemlucis_121 (L2), Gabriela_122 (L2), Gardann_122 (L2), Glaske16_143 (M1), GuuelaD_120 (L2), IPhane7_139 (M1), Itos_123 (L2), Kahlid_122 (L2), Lewan_125 (L2), LilDestine_119 (L2), LilhomieP_141 (M1), Loadrie_124 (L2), Miley16_123 (L2), MkaliMitinis3_125 (L2), Nanosmite_159 (M3), Netyap_121 (L2), Nicholasp3_123 (L2), Skinny_147 (M1), Tourach_124 (L2), TyDawg_135 (M1), Vetrix_122 (L2), Wigglewiggle_123 (L2), Wilder_123 (L2), Winky_123 (L2), Zakai_125 (L2), ZhongYanYuan_120 (L2),

Start 37:

- Found in 1 of 144 (0.7%) of genes in pham
- No Manual Annotations of this start.
- Called 100.0% of time when present
- Phage (with cluster) where this start called: Atuin_256 (FC),

Start 39:

- Found in 50 of 144 (34.7%) of genes in pham
- Manual Annotations of this start: 44 of 128
- Called 98.0% of time when present
- Phage (with cluster) where this start called: Acquire49_117 (L1), Aneem_86 (A11), Appletree2_116 (L1), AvadaKedavra_117 (L1), Aziz_159 (M2), Bachome_83 (A11), Bowtie_82 (A11), Bud_80 (A11), Calm_124 (L1), CicholasNage_111 (L1), Ebony_85 (A11), Estes_159 (M2), Et2Brutus_84 (A11), Fibonacci_84 (A11), Flaverint_86 (A11), Gilberta_82 (A11), Halena_117 (L1), Hutc2_81 (A11), Insomnia_83 (A11), Jabith_84 (A11), JoeDirt_120 (L1), Joselito_84 (A11), Jsquared_80 (A2), Koduck_78 (A2), LeBron_116 (L1), Lucivia_86 (A11), MAckerman_115 (L1), MaCh_85 (A11), Mabel_85 (A11), MrMagoo_164 (M2), Mulciber_83 (A11), Munch_85 (A11), Odin_78 (A2), OhShagHennessy_109 (L1), Orange_85 (A11), Petersenfast_79 (A11), Rose5_118 (L1), Salz_80 (A11), Serenity_80 (A2), Sham4_81 (A11), Snape_85 (A11), Timothy_85 (A11), TinyTimmy_83 (A11), TipsytheTRex_76 (A2), Tyson_118 (L1), UPIE_116 (L1), Wamburgrxpress_119 (L1), Wyatt2_117 (L1), Zaria_121 (L1),

Start 40:

- Found in 8 of 144 (5.6%) of genes in pham
- Manual Annotations of this start: 5 of 128
- Called 87.5% of time when present
- Phage (with cluster) where this start called: Andris_63 (BD2), Caelum_65 (BD2), Jflix2_29 (CF), Omar_66 (BD2), SJReid_263 (FC), Superstar_69 (BD2), Triumph_65 (BD2),

Start 41:

- Found in 5 of 144 (3.5%) of genes in pham
- Manual Annotations of this start: 1 of 128
- Called 20.0% of time when present
- Phage (with cluster) where this start called: L5_72 (A2),

Start 43:

- Found in 27 of 144 (18.8%) of genes in pham
- Manual Annotations of this start: 2 of 128
- Called 7.4% of time when present

- Phage (with cluster) where this start called: Reindeer_142 (M1), SlimJimmy_139 (M1),

Start 44:

- Found in 7 of 144 (4.9%) of genes in pham
- Manual Annotations of this start: 1 of 128
- Called 28.6% of time when present
- Phage (with cluster) where this start called: Caraxes_80 (A2), Rey_161 (M2),

Start 45:

- Found in 3 of 144 (2.1%) of genes in pham
- Manual Annotations of this start: 1 of 128
- Called 33.3% of time when present
- Phage (with cluster) where this start called: Superchunk_79 (A2),

Start 47:

- Found in 18 of 144 (12.5%) of genes in pham
- Manual Annotations of this start: 13 of 128
- Called 77.8% of time when present
- Phage (with cluster) where this start called: Bluefalcon_70 (A5), Bonamassa_75 (A5), Coog_72 (A5), Cuco_74 (A5), Dublin_75 (A5), HuhtaEnerson15_73 (A5), LittleCherry_74 (A5), MarysWell_75 (A5), Micasa_73 (A5), Midas2_72 (A5), Swirley_75 (A5), SydNat_74 (A5), Theia_74 (A5), Zolita_73 (A5),

Start 49:

- Found in 28 of 144 (19.4%) of genes in pham
- Manual Annotations of this start: 1 of 128
- Called 3.6% of time when present
- Phage (with cluster) where this start called: DyoEdafos_134 (L4),

Summary by clusters:

There are 13 clusters represented in this pham: M1, A11, M3, L1, FC, BD2, CF, L4, A2, L2, K5, M2, A5,

Info for manual annotations of cluster A11:

- Start number 39 was manually annotated 22 times for cluster A11.

Info for manual annotations of cluster A2:

- Start number 39 was manually annotated 4 times for cluster A2.
- Start number 41 was manually annotated 1 time for cluster A2.
- Start number 45 was manually annotated 1 time for cluster A2.

Info for manual annotations of cluster A5:

- Start number 33 was manually annotated 2 times for cluster A5.
- Start number 47 was manually annotated 13 times for cluster A5.

Info for manual annotations of cluster BD2:

- Start number 40 was manually annotated 4 times for cluster BD2.

Info for manual annotations of cluster CF:

- Start number 40 was manually annotated 1 time for cluster CF.

Info for manual annotations of cluster K5:

- Start number 32 was manually annotated 3 times for cluster K5.
- Start number 33 was manually annotated 1 time for cluster K5.
- Start number 35 was manually annotated 14 times for cluster K5.

Info for manual annotations of cluster L1:

- Start number 39 was manually annotated 15 times for cluster L1.

Info for manual annotations of cluster L2:

- Start number 36 was manually annotated 27 times for cluster L2.

Info for manual annotations of cluster L4:

- Start number 36 was manually annotated 1 time for cluster L4.
- Start number 49 was manually annotated 1 time for cluster L4.

Info for manual annotations of cluster M1:

- Start number 30 was manually annotated 2 times for cluster M1.
- Start number 36 was manually annotated 9 times for cluster M1.
- Start number 43 was manually annotated 2 times for cluster M1.

Info for manual annotations of cluster M2:

- Start number 39 was manually annotated 3 times for cluster M2.
- Start number 44 was manually annotated 1 time for cluster M2.

Info for manual annotations of cluster M3:

- Start number 36 was manually annotated 1 time for cluster M3.

Gene Information:

Gene: Acquire49_117 Start: 64194, Stop: 64021, Start Num: 39

Candidate Starts for Acquire49_117:

(18, 64329), (22, 64296), (23, 64278), (28, 64242), (31, 64227), (Start: 39 @64194 has 44 MA's), (Start: 43 @64182 has 2 MA's),

Gene: Agent47_70 Start: 48954, Stop: 49163, Start Num: 32

Candidate Starts for Agent47_70:

(14, 48810), (Start: 32 @48954 has 3 MA's), (Start: 33 @48957 has 3 MA's), (Start: 35 @48966 has 14 MA's), (42, 48993), (46, 49005), (58, 49092), (61, 49104), (65, 49125), (69, 49146),

Gene: AlleyCat_74 Start: 49309, Stop: 49506, Start Num: 35

Candidate Starts for AlleyCat_74:

(14, 49153), (20, 49210), (Start: 32 @49297 has 3 MA's), (Start: 33 @49300 has 3 MA's), (Start: 35 @49309 has 14 MA's), (42, 49336), (46, 49348), (58, 49435), (61, 49447), (65, 49468), (69, 49489),

Gene: Andris_63 Start: 42730, Stop: 42557, Start Num: 40

Candidate Starts for Andris_63:

(Start: 40 @42730 has 5 MA's), (Start: 44 @42718 has 1 MA's), (56, 42634), (61, 42610), (68, 42571),

Gene: Aneem_86 Start: 47024, Stop: 46848, Start Num: 39

Candidate Starts for Aneem_86:

(Start: 39 @47024 has 44 MA's), (59, 46913), (60, 46907), (61, 46904), (65, 46883),

Gene: Appletree2_116 Start: 64235, Stop: 64062, Start Num: 39

Candidate Starts for Appletree2_116:

(18, 64370), (22, 64337), (23, 64319), (28, 64283), (31, 64268), (Start: 39 @64235 has 44 MA's),
(Start: 43 @64223 has 2 MA's),

Gene: Archie_121 Start: 66124, Stop: 65933, Start Num: 36

Candidate Starts for Archie_121:

(34, 66136), (Start: 36 @66124 has 38 MA's), (Start: 49 @66079 has 1 MA's), (69, 65953),

Gene: Atuin_256 Start: 159446, Stop: 159610, Start Num: 37

Candidate Starts for Atuin_256:

(25, 159386), (26, 159389), (37, 159446), (Start: 40 @159455 has 5 MA's), (51, 159503), (52,
159506), (61, 159569), (66, 159596),

Gene: Auspice_142 Start: 72970, Stop: 72779, Start Num: 36

Candidate Starts for Auspice_142:

(16, 73093), (20, 73066), (Start: 36 @72970 has 38 MA's), (Start: 43 @72946 has 2 MA's), (65,
72817), (69, 72796), (70, 72787),

Gene: AvadaKedavra_117 Start: 64308, Stop: 64135, Start Num: 39

Candidate Starts for AvadaKedavra_117:

(18, 64443), (22, 64410), (23, 64392), (28, 64356), (31, 64341), (Start: 39 @64308 has 44 MA's),
(Start: 43 @64296 has 2 MA's),

Gene: Aziz_159 Start: 76111, Stop: 75911, Start Num: 39

Candidate Starts for Aziz_159:

(5, 76420), (6, 76417), (7, 76414), (8, 76408), (11, 76336), (25, 76177), (Start: 39 @76111 has 44
MA's), (42, 76102), (48, 76084), (56, 76015), (61, 75991), (69, 75949),

Gene: Bachome_83 Start: 45904, Stop: 45728, Start Num: 39

Candidate Starts for Bachome_83:

(Start: 39 @45904 has 44 MA's), (59, 45793), (60, 45787), (61, 45784), (65, 45763),

Gene: Baoshan_120 Start: 66333, Stop: 66148, Start Num: 36

Candidate Starts for Baoshan_120:

(34, 66345), (Start: 36 @66333 has 38 MA's), (67, 66168),

Gene: Bazzle_120 Start: 66711, Stop: 66520, Start Num: 36

Candidate Starts for Bazzle_120:

(34, 66723), (Start: 36 @66711 has 38 MA's), (Start: 49 @66666 has 1 MA's),

Gene: BigCheese_122 Start: 66602, Stop: 66411, Start Num: 36

Candidate Starts for BigCheese_122:

(34, 66614), (Start: 36 @66602 has 38 MA's), (Start: 49 @66557 has 1 MA's), (69, 66431),

Gene: Bluefalcon_70 Start: 44916, Stop: 44764, Start Num: 47

Candidate Starts for Bluefalcon_70:

(Start: 33 @44964 has 3 MA's), (Start: 47 @44916 has 13 MA's), (65, 44799),

Gene: BobsGarage_122 Start: 66602, Stop: 66411, Start Num: 36

Candidate Starts for BobsGarage_122:

(34, 66614), (Start: 36 @66602 has 38 MA's), (Start: 49 @66557 has 1 MA's), (69, 66431),

Gene: Bonamassa_75 Start: 45303, Stop: 45151, Start Num: 47

Candidate Starts for Bonamassa_75:

(Start: 33 @45351 has 3 MA's), (Start: 47 @45303 has 13 MA's), (62, 45195), (65, 45186),

Gene: Bongo_139 Start: 72617, Stop: 72399, Start Num: 30

Candidate Starts for Bongo_139:

(15, 72740), (19, 72710), (27, 72626), (Start: 30 @72617 has 2 MA's), (Start: 36 @72590 has 38 MA's), (Start: 43 @72566 has 2 MA's), (65, 72437), (69, 72416), (70, 72407),

Gene: Bowtie_82 Start: 45631, Stop: 45455, Start Num: 39

Candidate Starts for Bowtie_82:

(Start: 39 @45631 has 44 MA's), (59, 45520), (60, 45514), (61, 45511), (65, 45490),

Gene: Breezona_123 Start: 66937, Stop: 66746, Start Num: 36

Candidate Starts for Breezona_123:

(34, 66949), (Start: 36 @66937 has 38 MA's), (Start: 49 @66892 has 1 MA's), (69, 66766),

Gene: Bricole_143 Start: 72735, Stop: 72544, Start Num: 36

Candidate Starts for Bricole_143:

(16, 72858), (20, 72831), (Start: 36 @72735 has 38 MA's), (Start: 43 @72711 has 2 MA's), (65, 72582), (69, 72561), (70, 72552),

Gene: Bud_80 Start: 45461, Stop: 45285, Start Num: 39

Candidate Starts for Bud_80:

(Start: 39 @45461 has 44 MA's), (59, 45350), (60, 45344), (61, 45341), (65, 45320),

Gene: Caelum_65 Start: 42370, Stop: 42197, Start Num: 40

Candidate Starts for Caelum_65:

(12, 42556), (13, 42553), (Start: 40 @42370 has 5 MA's), (53, 42304), (56, 42274), (63, 42235), (68, 42211),

Gene: Calm_124 Start: 65409, Stop: 65236, Start Num: 39

Candidate Starts for Calm_124:

(18, 65544), (22, 65511), (23, 65493), (28, 65457), (31, 65442), (Start: 39 @65409 has 44 MA's), (Start: 43 @65397 has 2 MA's),

Gene: Caraxes_80 Start: 45566, Stop: 45399, Start Num: 44

Candidate Starts for Caraxes_80:

(Start: 44 @45566 has 1 MA's), (Start: 45 @45563 has 1 MA's), (46, 45560), (54, 45512), (55, 45503),

Gene: Chaser_131 Start: 67928, Stop: 67737, Start Num: 36

Candidate Starts for Chaser_131:

(34, 67940), (Start: 36 @67928 has 38 MA's), (69, 67757),

Gene: CicholasNage_111 Start: 64539, Stop: 64366, Start Num: 39

Candidate Starts for CicholasNage_111:

(18, 64674), (22, 64641), (23, 64623), (28, 64587), (31, 64572), (Start: 39 @64539 has 44 MA's), (Start: 43 @64527 has 2 MA's),

Gene: Claus_121 Start: 66246, Stop: 66061, Start Num: 36

Candidate Starts for Claus_121:

(34, 66258), (Start: 36 @66246 has 38 MA's), (Start: 49 @66201 has 1 MA's), (67, 66081),

Gene: Collard_70 Start: 48927, Stop: 49124, Start Num: 35

Candidate Starts for Collard_70:

(14, 48771), (20, 48828), (Start: 32 @48915 has 3 MA's), (Start: 33 @48918 has 3 MA's), (Start: 35 @48927 has 14 MA's), (42, 48954), (46, 48966), (58, 49053), (61, 49065), (65, 49086), (69, 49107),

Gene: Coog_72 Start: 45118, Stop: 44966, Start Num: 47

Candidate Starts for Coog_72:

(Start: 33 @45166 has 3 MA's), (Start: 47 @45118 has 13 MA's), (62, 45010), (65, 45001),

Gene: Crossroads_125 Start: 66699, Stop: 66508, Start Num: 36

Candidate Starts for Crossroads_125:

(34, 66711), (Start: 36 @66699 has 38 MA's), (Start: 49 @66654 has 1 MA's), (69, 66528),

Gene: Cuco_74 Start: 44978, Stop: 44826, Start Num: 47

Candidate Starts for Cuco_74:

(Start: 33 @45026 has 3 MA's), (Start: 47 @44978 has 13 MA's), (62, 44870), (65, 44861),

Gene: Dadosky_74 Start: 49311, Stop: 49508, Start Num: 35

Candidate Starts for Dadosky_74:

(14, 49155), (20, 49212), (Start: 32 @49299 has 3 MA's), (Start: 33 @49302 has 3 MA's), (Start: 35 @49311 has 14 MA's), (42, 49338), (46, 49350), (58, 49437), (61, 49449), (65, 49470), (69, 49491),

Gene: Diminimus_141 Start: 72406, Stop: 72215, Start Num: 36

Candidate Starts for Diminimus_141:

(15, 72556), (19, 72526), (27, 72442), (Start: 30 @72433 has 2 MA's), (Start: 36 @72406 has 38 MA's), (Start: 43 @72382 has 2 MA's), (65, 72253), (69, 72232), (70, 72223),

Gene: Douge_133 Start: 68622, Stop: 68431, Start Num: 36

Candidate Starts for Douge_133:

(34, 68634), (Start: 36 @68622 has 38 MA's), (69, 68451),

Gene: DrSeegs_121 Start: 66937, Stop: 66746, Start Num: 36

Candidate Starts for DrSeegs_121:

(34, 66949), (Start: 36 @66937 has 38 MA's), (Start: 49 @66892 has 1 MA's), (69, 66766),

Gene: Dublin_75 Start: 45250, Stop: 45098, Start Num: 47

Candidate Starts for Dublin_75:

(Start: 33 @45298 has 3 MA's), (Start: 47 @45250 has 13 MA's), (62, 45142), (65, 45133),

Gene: Dulcita_141 Start: 72407, Stop: 72216, Start Num: 36

Candidate Starts for Dulcita_141:

(15, 72557), (19, 72527), (27, 72443), (Start: 30 @72434 has 2 MA's), (Start: 36 @72407 has 38 MA's), (Start: 43 @72383 has 2 MA's), (65, 72254), (69, 72233), (70, 72224),

Gene: DyoEdafos_134 Start: 67841, Stop: 67695, Start Num: 49

Candidate Starts for DyoEdafos_134:

(34, 67898), (Start: 36 @67886 has 38 MA's), (Start: 49 @67841 has 1 MA's), (50, 67826), (69, 67715),

Gene: Ebony_85 Start: 46595, Stop: 46419, Start Num: 39

Candidate Starts for Ebony_85:

(Start: 39 @46595 has 44 MA's), (59, 46484), (60, 46478), (61, 46475), (65, 46454),

Gene: Edugator_70 Start: 50481, Stop: 50678, Start Num: 35

Candidate Starts for Edugator_70:

(21, 50388), (Start: 32 @50469 has 3 MA's), (Start: 33 @50472 has 3 MA's), (Start: 35 @50481 has 14 MA's), (42, 50508), (46, 50520), (58, 50607), (61, 50619), (65, 50640), (69, 50661),

Gene: Estes_159 Start: 76117, Stop: 75917, Start Num: 39

Candidate Starts for Estes_159:

(1, 76450), (2, 76444), (3, 76441), (6, 76414), (25, 76183), (Start: 39 @76117 has 44 MA's), (42, 76108), (Start: 47 @76093 has 13 MA's), (56, 76021), (61, 75997), (69, 75955),

Gene: Et2Brutus_84 Start: 46558, Stop: 46382, Start Num: 39

Candidate Starts for Et2Brutus_84:

(Start: 39 @46558 has 44 MA's), (59, 46447), (60, 46441), (61, 46438), (65, 46417),

Gene: Faith1_121 Start: 66245, Stop: 66054, Start Num: 36

Candidate Starts for Faith1_121:

(34, 66257), (Start: 36 @66245 has 38 MA's), (Start: 49 @66200 has 1 MA's), (69, 66074),

Gene: Feyre_75 Start: 52727, Stop: 52924, Start Num: 35

Candidate Starts for Feyre_75:

(14, 52571), (Start: 32 @52715 has 3 MA's), (Start: 33 @52718 has 3 MA's), (Start: 35 @52727 has 14 MA's), (42, 52754), (56, 52841), (57, 52850), (58, 52853), (61, 52865), (65, 52886), (69, 52907),

Gene: Fibonacci_84 Start: 46564, Stop: 46388, Start Num: 39

Candidate Starts for Fibonacci_84:

(Start: 39 @46564 has 44 MA's), (59, 46453), (60, 46447), (61, 46444), (65, 46423),

Gene: Finemlucis_121 Start: 67273, Stop: 67082, Start Num: 36

Candidate Starts for Finemlucis_121:

(34, 67285), (Start: 36 @67273 has 38 MA's), (Start: 49 @67228 has 1 MA's), (69, 67102),

Gene: Flaverint_86 Start: 47022, Stop: 46846, Start Num: 39

Candidate Starts for Flaverint_86:

(Start: 39 @47022 has 44 MA's), (59, 46911), (60, 46905), (61, 46902), (65, 46881),

Gene: Gabriela_122 Start: 65490, Stop: 65299, Start Num: 36

Candidate Starts for Gabriela_122:

(34, 65502), (Start: 36 @65490 has 38 MA's), (Start: 49 @65445 has 1 MA's), (69, 65319),

Gene: Gardann_122 Start: 66167, Stop: 65976, Start Num: 36

Candidate Starts for Gardann_122:

(34, 66179), (Start: 36 @66167 has 38 MA's), (Start: 49 @66122 has 1 MA's), (69, 65996),

Gene: Gengar_72 Start: 50725, Stop: 50934, Start Num: 32

Candidate Starts for Gengar_72:

(14, 50581), (20, 50638), (Start: 32 @50725 has 3 MA's), (Start: 33 @50728 has 3 MA's), (Start: 35 @50737 has 14 MA's), (42, 50764), (61, 50875), (65, 50896), (69, 50917),

Gene: Ghouboy_74 Start: 45239, Stop: 45039, Start Num: 33

Candidate Starts for Ghouboy_74:

(Start: 33 @45239 has 3 MA's), (Start: 47 @45191 has 13 MA's), (65, 45074),

Gene: Gilberta_82 Start: 45898, Stop: 45722, Start Num: 39

Candidate Starts for Gilberta_82:

(Start: 39 @45898 has 44 MA's), (59, 45787), (60, 45781), (61, 45778), (65, 45757),

Gene: Glaske16_143 Start: 73525, Stop: 73334, Start Num: 36

Candidate Starts for Glaske16_143:

(15, 73675), (19, 73645), (27, 73561), (Start: 30 @73552 has 2 MA's), (Start: 36 @73525 has 38 MA's), (Start: 43 @73501 has 2 MA's), (65, 73372), (69, 73351), (70, 73342),

Gene: Guillsminger_73 Start: 50646, Stop: 50855, Start Num: 32

Candidate Starts for Guillsminger_73:

(14, 50502), (Start: 32 @50646 has 3 MA's), (Start: 33 @50649 has 3 MA's), (Start: 35 @50658 has 14 MA's), (42, 50685), (56, 50772), (57, 50781), (58, 50784), (61, 50796), (65, 50817), (69, 50838),

Gene: GuuelaD_120 Start: 66427, Stop: 66236, Start Num: 36

Candidate Starts for GuuelaD_120:

(34, 66439), (Start: 36 @66427 has 38 MA's), (Start: 49 @66382 has 1 MA's), (69, 66256),

Gene: Halena_117 Start: 64182, Stop: 64009, Start Num: 39

Candidate Starts for Halena_117:

(13, 64365), (18, 64317), (22, 64284), (23, 64266), (28, 64230), (31, 64215), (Start: 39 @64182 has 44 MA's), (Start: 43 @64170 has 2 MA's),

Gene: Heftyboy_73 Start: 51006, Stop: 51203, Start Num: 35

Candidate Starts for Heftyboy_73:

(14, 50850), (20, 50907), (Start: 32 @50994 has 3 MA's), (Start: 33 @50997 has 3 MA's), (Start: 35 @51006 has 14 MA's), (42, 51033), (46, 51045), (58, 51132), (61, 51144), (65, 51165), (69, 51186),

Gene: HuhtaEnerson15_73 Start: 44956, Stop: 44804, Start Num: 47

Candidate Starts for HuhtaEnerson15_73:

(Start: 33 @45004 has 3 MA's), (Start: 47 @44956 has 13 MA's), (62, 44848), (65, 44839),

Gene: Hutc2_81 Start: 45448, Stop: 45272, Start Num: 39

Candidate Starts for Hutc2_81:

(Start: 39 @45448 has 44 MA's), (59, 45337), (60, 45331), (61, 45328), (65, 45307),

Gene: IPhane7_139 Start: 72586, Stop: 72395, Start Num: 36

Candidate Starts for IPhane7_139:

(16, 72709), (20, 72682), (Start: 36 @72586 has 38 MA's), (Start: 43 @72562 has 2 MA's), (65, 72433), (69, 72412), (70, 72403),

Gene: Insomnia_83 Start: 46742, Stop: 46566, Start Num: 39

Candidate Starts for Insomnia_83:

(Start: 39 @46742 has 44 MA's), (59, 46631), (60, 46625), (61, 46622), (65, 46601),

Gene: InvictusManeo_70 Start: 48970, Stop: 49167, Start Num: 35

Candidate Starts for InvictusManeo_70:

(14, 48814), (Start: 32 @48958 has 3 MA's), (Start: 33 @48961 has 3 MA's), (Start: 35 @48970 has 14 MA's), (42, 48997), (46, 49009), (58, 49096), (61, 49108), (65, 49129), (69, 49150),

Gene: Itos_123 Start: 65151, Stop: 64960, Start Num: 36

Candidate Starts for Itos_123:

(34, 65163), (Start: 36 @65151 has 38 MA's), (Start: 49 @65106 has 1 MA's), (69, 64980),

Gene: Jabith_84 Start: 46756, Stop: 46580, Start Num: 39

Candidate Starts for Jabith_84:

(Start: 39 @46756 has 44 MA's), (59, 46645), (60, 46639), (61, 46636), (65, 46615),

Gene: Jflix2_29 Start: 27850, Stop: 27686, Start Num: 40

Candidate Starts for Jflix2_29:

(Start: 40 @27850 has 5 MA's), (Start: 44 @27838 has 1 MA's), (52, 27799), (56, 27757), (65, 27712), (66, 27706),

Gene: JoeDirt_120 Start: 65537, Stop: 65364, Start Num: 39

Candidate Starts for JoeDirt_120:

(23, 65621), (28, 65585), (Start: 39 @65537 has 44 MA's), (46, 65516),

Gene: Joselito_84 Start: 46776, Stop: 46600, Start Num: 39

Candidate Starts for Joselito_84:

(Start: 39 @46776 has 44 MA's), (59, 46665), (60, 46659), (61, 46656), (65, 46635),

Gene: Jsquared_80 Start: 45434, Stop: 45252, Start Num: 39

Candidate Starts for Jsquared_80:

(Start: 39 @45434 has 44 MA's), (Start: 41 @45428 has 1 MA's), (71, 45257),

Gene: Kahlid_122 Start: 66452, Stop: 66261, Start Num: 36

Candidate Starts for Kahlid_122:

(34, 66464), (Start: 36 @66452 has 38 MA's), (Start: 49 @66407 has 1 MA's), (69, 66281),

Gene: Koduck_78 Start: 45209, Stop: 45027, Start Num: 39

Candidate Starts for Koduck_78:

(Start: 39 @45209 has 44 MA's), (Start: 41 @45203 has 1 MA's), (60, 45092), (71, 45032),

Gene: Kratio_75 Start: 50516, Stop: 50725, Start Num: 32

Candidate Starts for Kratio_75:

(14, 50372), (Start: 32 @50516 has 3 MA's), (Start: 33 @50519 has 3 MA's), (Start: 35 @50528 has 14 MA's), (42, 50555), (46, 50567), (58, 50654), (61, 50666), (65, 50687), (69, 50708),

Gene: L5_72 Start: 45356, Stop: 45180, Start Num: 41

Candidate Starts for L5_72:

(Start: 39 @45362 has 44 MA's), (Start: 41 @45356 has 1 MA's), (60, 45245), (71, 45185),

Gene: Larva_73 Start: 50174, Stop: 50380, Start Num: 33

Candidate Starts for Larva_73:

(14, 50027), (20, 50084), (Start: 32 @50171 has 3 MA's), (Start: 33 @50174 has 3 MA's), (Start: 35 @50183 has 14 MA's), (42, 50210), (46, 50222), (58, 50309), (61, 50321), (65, 50342), (69, 50363),

Gene: LeBron_116 Start: 63798, Stop: 63625, Start Num: 39

Candidate Starts for LeBron_116:

(18, 63933), (22, 63900), (23, 63882), (28, 63846), (31, 63831), (Start: 39 @63798 has 44 MA's), (Start: 43 @63786 has 2 MA's),

Gene: Leston_72 Start: 50775, Stop: 50972, Start Num: 35

Candidate Starts for Leston_72:

(14, 50619), (Start: 32 @50763 has 3 MA's), (Start: 33 @50766 has 3 MA's), (Start: 35 @50775 has 14 MA's), (42, 50802), (56, 50889), (57, 50898), (58, 50901), (61, 50913), (65, 50934), (69, 50955),

Gene: Lewan_125 Start: 67228, Stop: 67037, Start Num: 36

Candidate Starts for Lewan_125:

(34, 67240), (Start: 36 @67228 has 38 MA's), (Start: 49 @67183 has 1 MA's), (69, 67057),

Gene: LilDestine_119 Start: 65622, Stop: 65431, Start Num: 36

Candidate Starts for LilDestine_119:

(34, 65634), (Start: 36 @65622 has 38 MA's), (Start: 49 @65577 has 1 MA's), (69, 65451),

Gene: LilhomieP_141 Start: 73436, Stop: 73245, Start Num: 36

Candidate Starts for LilhomieP_141:

(15, 73586), (19, 73556), (27, 73472), (Start: 30 @73463 has 2 MA's), (Start: 36 @73436 has 38 MA's), (Start: 43 @73412 has 2 MA's), (65, 73283), (69, 73262), (70, 73253),

Gene: LittleCherry_74 Start: 44826, Stop: 44674, Start Num: 47

Candidate Starts for LittleCherry_74:

(Start: 33 @44874 has 3 MA's), (Start: 47 @44826 has 13 MA's), (62, 44718), (65, 44709),

Gene: Loadrie_124 Start: 67260, Stop: 67069, Start Num: 36

Candidate Starts for Loadrie_124:

(34, 67272), (Start: 36 @67260 has 38 MA's), (Start: 49 @67215 has 1 MA's), (69, 67089),

Gene: Lucivia_86 Start: 47055, Stop: 46879, Start Num: 39

Candidate Starts for Lucivia_86:

(Start: 39 @47055 has 44 MA's), (59, 46944), (60, 46938), (61, 46935), (65, 46914),

Gene: MAckerman_115 Start: 64175, Stop: 64002, Start Num: 39

Candidate Starts for MAckerman_115:

(13, 64358), (18, 64310), (22, 64277), (23, 64259), (28, 64223), (31, 64208), (Start: 39 @64175 has 44 MA's), (Start: 43 @64163 has 2 MA's),

Gene: MaCh_85 Start: 47019, Stop: 46843, Start Num: 39

Candidate Starts for MaCh_85:

(Start: 39 @47019 has 44 MA's), (58, 46911), (59, 46908), (60, 46902), (61, 46899), (65, 46878),

Gene: Mabel_85 Start: 47020, Stop: 46844, Start Num: 39

Candidate Starts for Mabel_85:

(Start: 39 @47020 has 44 MA's), (59, 46909), (60, 46903), (61, 46900), (65, 46879),

Gene: MarysWell_75 Start: 45493, Stop: 45341, Start Num: 47

Candidate Starts for MarysWell_75:

(17, 45655), (Start: 33 @45541 has 3 MA's), (Start: 47 @45493 has 13 MA's), (62, 45385), (65, 45376),

Gene: Micasa_73 Start: 45215, Stop: 45063, Start Num: 47

Candidate Starts for Micasa_73:

(Start: 33 @45263 has 3 MA's), (Start: 47 @45215 has 13 MA's), (62, 45107), (65, 45098),

Gene: Midas2_72 Start: 45118, Stop: 44966, Start Num: 47

Candidate Starts for Midas2_72:

(Start: 33 @45166 has 3 MA's), (Start: 47 @45118 has 13 MA's), (62, 45010), (65, 45001),

Gene: Miley16_123 Start: 66937, Stop: 66746, Start Num: 36

Candidate Starts for Miley16_123:

(34, 66949), (Start: 36 @66937 has 38 MA's), (Start: 49 @66892 has 1 MA's), (69, 66766),

Gene: Miryou_77 Start: 53394, Stop: 53591, Start Num: 35

Candidate Starts for Miryou_77:

(14, 53238), (Start: 32 @53382 has 3 MA's), (Start: 33 @53385 has 3 MA's), (Start: 35 @53394 has 14 MA's), (42, 53421), (56, 53508), (57, 53517), (58, 53520), (61, 53532), (65, 53553), (69, 53574),

Gene: MkaliMitinis3_125 Start: 66564, Stop: 66373, Start Num: 36

Candidate Starts for MkaliMitinis3_125:

(34, 66576), (Start: 36 @66564 has 38 MA's), (Start: 49 @66519 has 1 MA's), (69, 66393),

Gene: MrMagoo_164 Start: 76795, Stop: 76595, Start Num: 39

Candidate Starts for MrMagoo_164:

(1, 77128), (2, 77122), (3, 77119), (6, 77092), (25, 76861), (Start: 39 @76795 has 44 MA's), (Start: 47 @76771 has 13 MA's), (56, 76699), (61, 76675), (69, 76633),

Gene: Mulciber_83 Start: 46561, Stop: 46385, Start Num: 39

Candidate Starts for Mulciber_83:

(Start: 39 @46561 has 44 MA's), (59, 46450), (60, 46444), (61, 46441), (65, 46420),

Gene: Munch_85 Start: 47024, Stop: 46848, Start Num: 39

Candidate Starts for Munch_85:

(Start: 39 @47024 has 44 MA's), (59, 46913), (60, 46907), (61, 46904), (65, 46883),

Gene: Nanosmite_159 Start: 75860, Stop: 75654, Start Num: 36

Candidate Starts for Nanosmite_159:

(24, 75920), (25, 75914), (29, 75893), (34, 75872), (Start: 36 @75860 has 38 MA's), (42, 75842), (53, 75785), (57, 75746), (61, 75731), (69, 75689),

Gene: Netyap_121 Start: 66651, Stop: 66460, Start Num: 36

Candidate Starts for Netyap_121:

(34, 66663), (Start: 36 @66651 has 38 MA's), (Start: 49 @66606 has 1 MA's), (69, 66480),

Gene: Nicholasp3_123 Start: 66167, Stop: 65976, Start Num: 36

Candidate Starts for Nicholasp3_123:

(34, 66179), (Start: 36 @66167 has 38 MA's), (Start: 49 @66122 has 1 MA's), (69, 65996),

Gene: Odin_78 Start: 45907, Stop: 45725, Start Num: 39

Candidate Starts for Odin_78:

(Start: 39 @45907 has 44 MA's), (Start: 44 @45892 has 1 MA's), (Start: 45 @45889 has 1 MA's), (46, 45886),

Gene: OhShagHennessy_109 Start: 62960, Stop: 62787, Start Num: 39

Candidate Starts for OhShagHennessy_109:

(18, 63095), (22, 63062), (23, 63044), (28, 63008), (31, 62993), (Start: 39 @62960 has 44 MA's), (Start: 43 @62948 has 2 MA's),

Gene: OkiRoe_73 Start: 51079, Stop: 51276, Start Num: 35

Candidate Starts for OkiRoe_73:

(14, 50923), (20, 50980), (Start: 32 @51067 has 3 MA's), (Start: 33 @51070 has 3 MA's), (Start: 35 @51079 has 14 MA's), (42, 51106), (61, 51217), (65, 51238), (69, 51259),

Gene: Omar_66 Start: 41357, Stop: 41184, Start Num: 40

Candidate Starts for Omar_66:

(Start: 40 @41357 has 5 MA's), (48, 41333), (63, 41222), (68, 41198),

Gene: Orange_85 Start: 46574, Stop: 46398, Start Num: 39

Candidate Starts for Orange_85:

(Start: 39 @46574 has 44 MA's), (59, 46463), (60, 46457), (61, 46454), (65, 46433),

Gene: Paola_72 Start: 50658, Stop: 50855, Start Num: 35

Candidate Starts for Paola_72:

(14, 50502), (Start: 32 @50646 has 3 MA's), (Start: 33 @50649 has 3 MA's), (Start: 35 @50658 has 14 MA's), (42, 50685), (56, 50772), (57, 50781), (58, 50784), (61, 50796), (65, 50817), (69, 50838),

Gene: PegLeg_144 Start: 73347, Stop: 73129, Start Num: 30

Candidate Starts for PegLeg_144:

(15, 73470), (19, 73440), (27, 73356), (Start: 30 @73347 has 2 MA's), (Start: 36 @73320 has 38 MA's), (Start: 43 @73296 has 2 MA's), (65, 73167), (69, 73146), (70, 73137),

Gene: Petersenfast_79 Start: 45455, Stop: 45279, Start Num: 39

Candidate Starts for Petersenfast_79:

(Start: 39 @45455 has 44 MA's), (59, 45344), (60, 45338), (61, 45335), (65, 45314),

Gene: Psycho_72 Start: 49308, Stop: 49505, Start Num: 35

Candidate Starts for Psycho_72:

(14, 49152), (20, 49209), (Start: 32 @49296 has 3 MA's), (Start: 33 @49299 has 3 MA's), (Start: 35 @49308 has 14 MA's), (42, 49335), (46, 49347), (58, 49434), (61, 49446), (65, 49467), (69, 49488),

Gene: Reindeer_142 Start: 74200, Stop: 74033, Start Num: 43

Candidate Starts for Reindeer_142:

(Start: 36 @74224 has 38 MA's), (38, 74215), (Start: 43 @74200 has 2 MA's), (65, 74071), (69, 74050),

Gene: Rey_161 Start: 75634, Stop: 75455, Start Num: 44

Candidate Starts for Rey_161:

(4, 75964), (9, 75925), (10, 75889), (34, 75673), (42, 75640), (Start: 44 @75634 has 1 MA's), (60, 75532), (64, 75511),

Gene: Rose5_118 Start: 64472, Stop: 64299, Start Num: 39

Candidate Starts for Rose5_118:

(18, 64607), (22, 64574), (23, 64556), (28, 64520), (31, 64505), (Start: 39 @64472 has 44 MA's), (Start: 43 @64460 has 2 MA's),

Gene: SJReid_263 Start: 154498, Stop: 154656, Start Num: 40

Candidate Starts for SJReid_263:

(Start: 35 @154483 has 14 MA's), (Start: 40 @154498 has 5 MA's), (52, 154549), (53, 154561), (61, 154612),

Gene: Salz_80 Start: 45370, Stop: 45194, Start Num: 39

Candidate Starts for Salz_80:

(Start: 39 @45370 has 44 MA's), (59, 45259), (60, 45253), (61, 45250), (65, 45229),

Gene: Serenity_80 Start: 45494, Stop: 45312, Start Num: 39
Candidate Starts for Serenity_80:
(Start: 39 @45494 has 44 MA's), (Start: 41 @45488 has 1 MA's), (71, 45317),

Gene: Sham4_81 Start: 45456, Stop: 45280, Start Num: 39
Candidate Starts for Sham4_81:
(Start: 39 @45456 has 44 MA's), (59, 45345), (60, 45339), (61, 45336), (65, 45315),

Gene: Skinny_147 Start: 74437, Stop: 74246, Start Num: 36
Candidate Starts for Skinny_147:
(15, 74587), (19, 74557), (27, 74473), (Start: 30 @74464 has 2 MA's), (Start: 36 @74437 has 38 MA's), (Start: 43 @74413 has 2 MA's), (65, 74284), (69, 74263), (70, 74254),

Gene: SlimJimmy_139 Start: 73122, Stop: 72955, Start Num: 43
Candidate Starts for SlimJimmy_139:
(16, 73269), (20, 73242), (Start: 36 @73146 has 38 MA's), (Start: 43 @73122 has 2 MA's), (65, 72993), (69, 72972), (70, 72963),

Gene: Snape_85 Start: 46563, Stop: 46387, Start Num: 39
Candidate Starts for Snape_85:
(Start: 39 @46563 has 44 MA's), (59, 46452), (60, 46446), (61, 46443), (65, 46422),

Gene: SoSeph_73 Start: 51006, Stop: 51203, Start Num: 35
Candidate Starts for SoSeph_73:
(14, 50850), (20, 50907), (Start: 32 @50994 has 3 MA's), (Start: 33 @50997 has 3 MA's), (Start: 35 @51006 has 14 MA's), (42, 51033), (46, 51045), (58, 51132), (61, 51144), (65, 51165), (69, 51186),

Gene: Superchunk_79 Start: 45563, Stop: 45399, Start Num: 45
Candidate Starts for Superchunk_79:
(Start: 44 @45566 has 1 MA's), (Start: 45 @45563 has 1 MA's), (46, 45560), (54, 45512), (55, 45503),

Gene: Superstar_69 Start: 43188, Stop: 43015, Start Num: 40
Candidate Starts for Superstar_69:
(Start: 40 @43188 has 5 MA's), (53, 43122), (56, 43092), (58, 43080), (61, 43068), (63, 43053), (68, 43029),

Gene: Swirley_75 Start: 45159, Stop: 45007, Start Num: 47
Candidate Starts for Swirley_75:
(Start: 33 @45207 has 3 MA's), (Start: 47 @45159 has 13 MA's), (62, 45051), (65, 45042),

Gene: SydNat_74 Start: 45200, Stop: 45048, Start Num: 47
Candidate Starts for SydNat_74:
(Start: 33 @45248 has 3 MA's), (Start: 47 @45200 has 13 MA's), (65, 45083),

Gene: Tarynearal_74 Start: 45043, Stop: 44843, Start Num: 33
Candidate Starts for Tarynearal_74:
(Start: 33 @45043 has 3 MA's), (Start: 47 @44995 has 13 MA's), (62, 44887), (65, 44878),

Gene: Theia_74 Start: 45480, Stop: 45328, Start Num: 47
Candidate Starts for Theia_74:
(Start: 33 @45528 has 3 MA's), (Start: 47 @45480 has 13 MA's), (62, 45372), (65, 45363),

Gene: Thyatira_75 Start: 53010, Stop: 53207, Start Num: 35
Candidate Starts for Thyatira_75:
(14, 52854), (Start: 32 @52998 has 3 MA's), (Start: 33 @53001 has 3 MA's), (Start: 35 @53010 has 14 MA's), (42, 53037), (58, 53136), (61, 53148), (65, 53169), (69, 53190),

Gene: Timothy_85 Start: 46540, Stop: 46364, Start Num: 39
Candidate Starts for Timothy_85:
(Start: 39 @46540 has 44 MA's), (59, 46429), (60, 46423), (61, 46420), (65, 46399),

Gene: TinyTimmy_83 Start: 46269, Stop: 46093, Start Num: 39
Candidate Starts for TinyTimmy_83:
(Start: 39 @46269 has 44 MA's), (59, 46158), (60, 46152), (61, 46149), (65, 46128),

Gene: TopsytheTRex_76 Start: 45496, Stop: 45314, Start Num: 39
Candidate Starts for TopsytheTRex_76:
(Start: 39 @45496 has 44 MA's), (Start: 41 @45490 has 1 MA's), (71, 45319),

Gene: Tourach_124 Start: 67787, Stop: 67599, Start Num: 36
Candidate Starts for Tourach_124:
(34, 67799), (Start: 36 @67787 has 38 MA's), (69, 67616),

Gene: Triumph_65 Start: 43164, Stop: 42991, Start Num: 40
Candidate Starts for Triumph_65:
(Start: 40 @43164 has 5 MA's), (Start: 44 @43152 has 1 MA's), (56, 43068), (61, 43044), (63, 43029), (68, 43005),

Gene: TyDawg_135 Start: 72589, Stop: 72398, Start Num: 36
Candidate Starts for TyDawg_135:
(16, 72712), (20, 72685), (Start: 36 @72589 has 38 MA's), (Start: 43 @72565 has 2 MA's), (65, 72436), (69, 72415), (70, 72406),

Gene: Tyson_118 Start: 64902, Stop: 64729, Start Num: 39
Candidate Starts for Tyson_118:
(18, 65037), (22, 65004), (23, 64986), (28, 64950), (31, 64935), (Start: 39 @64902 has 44 MA's), (Start: 43 @64890 has 2 MA's),

Gene: UPIE_116 Start: 64139, Stop: 63966, Start Num: 39
Candidate Starts for UPIE_116:
(18, 64274), (22, 64241), (23, 64223), (28, 64187), (31, 64172), (Start: 39 @64139 has 44 MA's), (Start: 43 @64127 has 2 MA's),

Gene: Vetrix_122 Start: 67077, Stop: 66886, Start Num: 36
Candidate Starts for Vetrix_122:
(34, 67089), (Start: 36 @67077 has 38 MA's), (Start: 49 @67032 has 1 MA's), (69, 66906),

Gene: Wamburgrexpress_119 Start: 64929, Stop: 64756, Start Num: 39
Candidate Starts for Wamburgrexpress_119:
(23, 65013), (28, 64977), (Start: 39 @64929 has 44 MA's), (46, 64908),

Gene: Waterfoul_74 Start: 51080, Stop: 51277, Start Num: 35
Candidate Starts for Waterfoul_74:
(14, 50924), (Start: 32 @51068 has 3 MA's), (Start: 33 @51071 has 3 MA's), (Start: 35 @51080 has 14 MA's), (42, 51107), (58, 51206), (61, 51218), (65, 51239), (69, 51260),

Gene: Wigglewiggles_123 Start: 66673, Stop: 66482, Start Num: 36

Candidate Starts for Wigglewiggles_123:

(34, 66685), (Start: 36 @66673 has 38 MA's), (Start: 49 @66628 has 1 MA's), (69, 66502),

Gene: Wilder_123 Start: 66306, Stop: 66115, Start Num: 36

Candidate Starts for Wilder_123:

(34, 66318), (Start: 36 @66306 has 38 MA's), (Start: 49 @66261 has 1 MA's), (69, 66135),

Gene: Winky_123 Start: 66938, Stop: 66747, Start Num: 36

Candidate Starts for Winky_123:

(34, 66950), (Start: 36 @66938 has 38 MA's), (Start: 49 @66893 has 1 MA's), (69, 66767),

Gene: Wyatt2_117 Start: 64565, Stop: 64392, Start Num: 39

Candidate Starts for Wyatt2_117:

(18, 64700), (22, 64667), (23, 64649), (28, 64613), (31, 64598), (Start: 39 @64565 has 44 MA's),
(Start: 43 @64553 has 2 MA's),

Gene: Zakai_125 Start: 66648, Stop: 66457, Start Num: 36

Candidate Starts for Zakai_125:

(34, 66660), (Start: 36 @66648 has 38 MA's), (Start: 49 @66603 has 1 MA's), (69, 66477),

Gene: Zaria_121 Start: 64874, Stop: 64701, Start Num: 39

Candidate Starts for Zaria_121:

(18, 65009), (22, 64976), (23, 64958), (28, 64922), (31, 64907), (Start: 39 @64874 has 44 MA's),
(Start: 43 @64862 has 2 MA's),

Gene: ZhongYanYuan_120 Start: 66032, Stop: 65847, Start Num: 36

Candidate Starts for ZhongYanYuan_120:

(34, 66044), (Start: 36 @66032 has 38 MA's), (67, 65867),

Gene: Zolita_73 Start: 45183, Stop: 45031, Start Num: 47

Candidate Starts for Zolita_73:

(Start: 33 @45231 has 3 MA's), (Start: 47 @45183 has 13 MA's), (65, 45066),