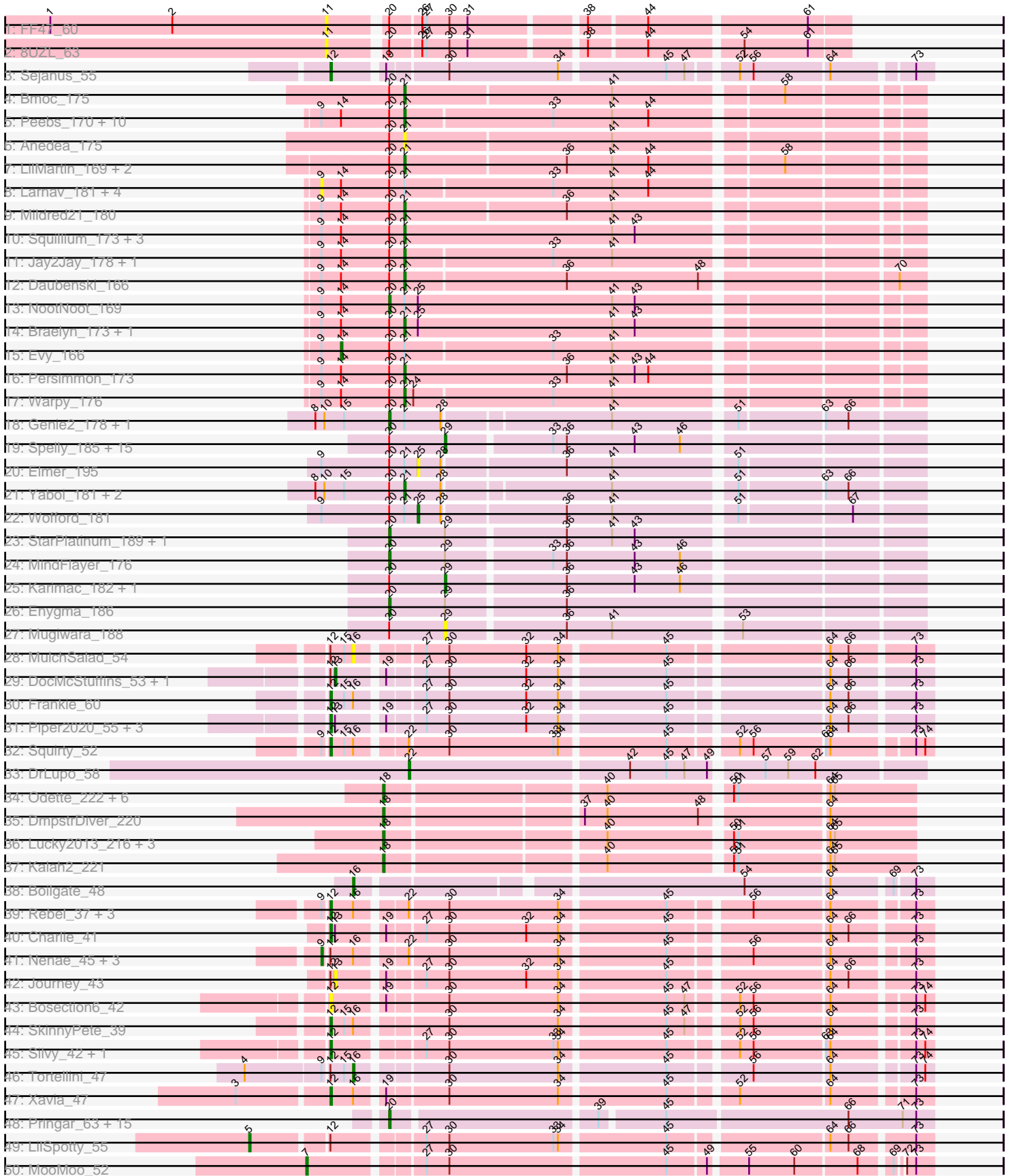
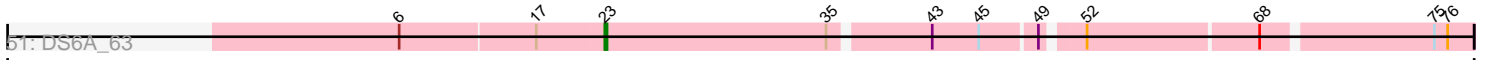


Pham 157701



Pham 157701



Note: Tracks are now grouped by subcluster and scaled. Switching in subcluster is indicated by changes in track color. Track scale is now set by default to display the region 30 bp upstream of start 1 to 30 bp downstream of the last possible start. If this default region is judged to be packed too tightly with annotated starts, the track will be further scaled to only show that region of the ORF with annotated starts. This action will be indicated by adding "Zoomed" to the title. For starts, yellow indicates the location of called starts comprised solely of Glimmer/GeneMark auto-annotations, green indicates the location of called starts with at least 1 manual gene annotation.

Pham 157701 Report

This analysis was run 04/13/24 on database version 558.

Pham number 157701 has 127 members, 21 are drafts.

Phages represented in each track:

- Track 1 : FF47_60
- Track 2 : 8UZL_63
- Track 3 : Sejanus_55
- Track 4 : Bmoc_175
- Track 5 : Peebs_170, Leo04_173, Cursive_171, Samisti12_174, Teutsch_171, Pepperwood_171, Tribute_170, EGole_174, Sushi23_172, Cross_172, Watermoore_171
- Track 6 : Anedea_175
- Track 7 : LilMartin_169, Angela_171, MulchMansion_170
- Track 8 : Larnav_181, BlueOtter_175, Lululemon_175, PacManQ_175, HangryHippo_175
- Track 9 : Mildred21_180
- Track 10 : Squillium_173, Liandry_172, PinkiePie_170, Bartholomune_172
- Track 11 : Jay2Jay_178, Targaryen_172
- Track 12 : Daubenski_166
- Track 13 : NootNoot_169
- Track 14 : Braelyn_173, Paradiddles_166
- Track 15 : Evy_166
- Track 16 : Persimmon_173
- Track 17 : Warpy_176
- Track 18 : Genie2_178, BoomerJR_178
- Track 19 : Spelly_185, JimJam_188, Amabiko_185, KentuckyRacer_191, Birchlyn_181, IchabodCrane_177, Battuta_182, Quarant19_182, Jollison_186, TomSawyer_186, PumpkinSpice_184, Wipeout_175, Starbow_180, Gibbi_190, SaltySpittoon_182, Bordeaux_181
- Track 20 : Elmer_195
- Track 21 : Yaboi_181, Sollertia_178, Stanimal_177
- Track 22 : Wofford_181
- Track 23 : StarPlatinum_189, LukeCage_181
- Track 24 : MindFlayer_176
- Track 25 : Karimac_182, Spilled_187
- Track 26 : Enygma_186
- Track 27 : Mugiwara_188
- Track 28 : MulchSalad_54
- Track 29 : DocMcStuffins_53, Awesomesauce_55
- Track 30 : Frankie_60
- Track 31 : Piper2020_55, ChickenDinner_56, Misha28_53, TootsiePop_53

- Track 32 : Squirty_52
- Track 33 : DrLupo_58
- Track 34 : Odette_222, Duke13_223, Minerva_218, KashFlow_213, Hannaconda_212, Schatzie_212, Pound_210
- Track 35 : DmpstrDiver_220
- Track 36 : Lucky2013_216, MiaZeal_228, ThreeRngTarjay_220, Porcelain_219
- Track 37 : Kalah2_221
- Track 38 : Boilgate_48
- Track 39 : Rebel_37, Purgamenstris_45, BabeRuth_46, Raymond7_39
- Track 40 : Charlie_41
- Track 41 : Nenae_45, Redi_45, PhancyPhin_45, ShrimpFriedEgg_45
- Track 42 : Journey_43
- Track 43 : Bosection6_42
- Track 44 : SkinnyPete_39
- Track 45 : Silvy_42, Aggie_40
- Track 46 : Tortellini_47
- Track 47 : Xavia_47
- Track 48 : Pringar_63, VasuNzinga_63, Beelzebub_68, JoieB_65, Corazon_62, Marvin_60, Blackbeetle_64, MosMoris_61, RedRaider77_63, Caprice_59, Poise_64, Clarkson_65, Huphlebuff_66, Gattaca_62, Raela_64, Tesla_61
- Track 49 : LilSpotty_55
- Track 50 : MooMoo_52
- Track 51 : DS6A_63

Summary of Final Annotations (See graph section above for start numbers):

The start number called the most often in the published annotations is 21, it was called in 30 of the 106 non-draft genes in the pham.

Genes that call this "Most Annotated" start:

- Anedeaa_175, Angela_171, Bartholomune_172, Bmoc_175, Braelyn_173, Cross_172, Cursive_171, Daubenski_166, EGole_174, Jay2Jay_178, Leo04_173, Liandry_172, LilMartin_169, Mildred21_180, MulchMansion_170, Paradiddles_166, Peebs_170, Pepperwood_171, Persimmon_173, PinkiePie_170, Samisti12_174, Sollertia_178, Squillium_173, Stanimal_177, Sushi23_172, Targaryen_172, Teutsch_171, Tribute_170, Warpy_176, Watermoore_171, Yaboi_181,

Genes that have the "Most Annotated" start but do not call it:

- BlueOtter_175, BoomerJR_178, Elmer_195, Evy_166, Genie2_178, HangryHippo_175, Larnav_181, Lululemon_175, NootNoot_169, PacManQ_175, Wofford_181,

Genes that do not have the "Most Annotated" start:

- 8UZL_63, Aggie_40, Amabiko_185, Awesomesauce_55, BabeRuth_46, Battuta_182, Beelzebub_68, Birchlyn_181, Blackbeetle_64, Boilgate_48, Bordeaux_181, Bosection6_42, Caprice_59, Charlie_41, ChickenDinner_56, Clarkson_65, Corazon_62, DS6A_63, DmpstrDiver_220, DocMcStuffins_53, DrLupo_58, Duke13_223, Enygma_186, FF47_60, Frankie_60, Gattaca_62, Gibbi_190, Hannaconda_212, Huphlebuff_66, IchabodCrane_177, JimJam_188, JoieB_65, Jollison_186, Journey_43, Kalah2_221, Karimac_182, KashFlow_213,

KentuckyRacer_191, LilSpotty_55, Lucky2013_216, LukeCage_181, Marvin_60, MiaZeal_228, MindFlayer_176, Minerva_218, Misha28_53, MooMoo_52, MosMoris_61, Mugiwara_188, MulchSalad_54, Nenae_45, Odette_222, PhancyPhin_45, Piper2020_55, Poise_64, Porcelain_219, Pound_210, Pringar_63, PumpkinSpice_184, Purgamenstris_45, Quarant19_182, Raela_64, Raymond7_39, Rebel_37, RedRaider77_63, Redi_45, SaltySpittoon_182, Schatzie_212, Sejanus_55, ShrimpFriedEgg_45, Silvy_42, SkinnyPete_39, Spelly_185, Spilled_187, Squirty_52, StarPlatinum_189, Starbow_180, Tesla_61, ThreeRngTarjay_220, TomSawyer_186, TootsiePop_53, Tortellini_47, VasuNzinga_63, Wipeout_175, Xavia_47,

Summary by start number:

Start 5:

- Found in 1 of 127 (0.8%) of genes in pham
- Manual Annotations of this start: 1 of 106
- Called 100.0% of time when present
- Phage (with cluster) where this start called: LilSpotty_55 (singleton),

Start 7:

- Found in 1 of 127 (0.8%) of genes in pham
- Manual Annotations of this start: 1 of 106
- Called 100.0% of time when present
- Phage (with cluster) where this start called: MooMoo_52 (singleton),

Start 9:

- Found in 42 of 127 (33.1%) of genes in pham
- Manual Annotations of this start: 4 of 106
- Called 21.4% of time when present
- Phage (with cluster) where this start called: BlueOtter_175 (BE1), HangryHippo_175 (BE1), Larnav_181 (BE1), Lululemon_175 (BE1), Nenae_45 (N), PacManQ_175 (BE1), PhancyPhin_45 (N), Redi_45 (N), ShrimpFriedEgg_45 (N),

Start 11:

- Found in 2 of 127 (1.6%) of genes in pham
- No Manual Annotations of this start.
- Called 100.0% of time when present
- Phage (with cluster) where this start called: 8UZL_63 (AB), FF47_60 (AB),

Start 12:

- Found in 27 of 127 (21.3%) of genes in pham
- Manual Annotations of this start: 14 of 106
- Called 63.0% of time when present
- Phage (with cluster) where this start called: Aggie_40 (N), BabeRuth_46 (N), Bosection6_42 (N), Charlie_41 (N), ChickenDinner_56 (F1), Frankie_60 (F1), Misha28_53 (F1), Piper2020_55 (F1), Purgamenstris_45 (N), Raymond7_39 (N), Rebel_37 (N), Sejanus_55 (AD), Silvy_42 (N), SkinnyPete_39 (N), Squirty_52 (F3), TootsiePop_53 (F1), Xavia_47 (P3),

Start 13:

- Found in 8 of 127 (6.3%) of genes in pham
- Manual Annotations of this start: 1 of 106
- Called 37.5% of time when present

- Phage (with cluster) where this start called: Awesomesauce_55 (F1), DocMcStuffins_53 (F1), Journey_43 (N),

Start 14:

- Found in 30 of 127 (23.6%) of genes in pham
- Manual Annotations of this start: 1 of 106
- Called 3.3% of time when present
- Phage (with cluster) where this start called: Evy_166 (BE1),

Start 16:

- Found in 15 of 127 (11.8%) of genes in pham
- Manual Annotations of this start: 2 of 106
- Called 20.0% of time when present
- Phage (with cluster) where this start called: Boilgate_48 (K8), MulchSalad_54 (F), Tortellini_47 (P2),

Start 18:

- Found in 13 of 127 (10.2%) of genes in pham
- Manual Annotations of this start: 12 of 106
- Called 100.0% of time when present
- Phage (with cluster) where this start called: DmpstrDiver_220 (J), Duke13_223 (J), Hannaconda_212 (J), Kalah2_221 (J), KashFlow_213 (J), Lucky2013_216 (J), MiaZeal_228 (J), Minerva_218 (J), Odette_222 (J), Porcelain_219 (J), Pound_210 (J), Schatzie_212 (J), ThreeRngTarjay_220 (J),

Start 20:

- Found in 83 of 127 (65.4%) of genes in pham
- Manual Annotations of this start: 22 of 106
- Called 27.7% of time when present
- Phage (with cluster) where this start called: Beelzebub_68 (S), Blackbeetle_64 (S), BoomerJR_178 (BE2), Caprice_59 (S), Clarkson_65 (S), Corazon_62 (S), Enyigma_186 (BE2), Gattaca_62 (S), Genie2_178 (BE2), Huphlepuuff_66 (S), JoieB_65 (S), LukeCage_181 (BE2), Marvin_60 (S), MindFlayer_176 (BE2), MosMoris_61 (S), NootNoot_169 (BE1), Poise_64 (S), Pringar_63 (S), Raela_64 (S), RedRaider77_63 (S), StarPlatinum_189 (BE2), Tesla_61 (S), VasuNzinga_63 (S),

Start 21:

- Found in 42 of 127 (33.1%) of genes in pham
- Manual Annotations of this start: 30 of 106
- Called 73.8% of time when present
- Phage (with cluster) where this start called: Anedea_175 (BE1), Angela_171 (BE1), Bartholomune_172 (BE1), Bmoc_175 (BE1), Braelyn_173 (BE1), Cross_172 (BE1), Cursive_171 (BE1), Daubenski_166 (BE1), EGole_174 (BE1), Jay2Jay_178 (BE1), Leo04_173 (BE1), Liandry_172 (BE1), LilMartin_169 (BE1), Mildred21_180 (BE1), MulchMansion_170 (BE1), Paradiddles_166 (BE1), Peebs_170 (BE1), Pepperwood_171 (BE1), Persimmon_173 (BE1), PinkiePie_170 (BE1), Samisti12_174 (BE1), Sollertia_178 (BE2), Squillium_173 (BE1), Stanimal_177 (BE2), Sushi23_172 (BE1), Targaryen_172 (BE1), Teutsch_171 (BE1), Tribute_170 (BE1), Warpy_176 (BE1), Watermoore_171 (BE1), Yaboi_181 (BE2),

Start 22:

- Found in 10 of 127 (7.9%) of genes in pham
- Manual Annotations of this start: 1 of 106

- Called 10.0% of time when present
- Phage (with cluster) where this start called: DrLupo_58 (H2),

Start 23:

- Found in 1 of 127 (0.8%) of genes in pham
- Manual Annotations of this start: 1 of 106
- Called 100.0% of time when present
- Phage (with cluster) where this start called: DS6A_63 (singleton),

Start 25:

- Found in 5 of 127 (3.9%) of genes in pham
- Manual Annotations of this start: 1 of 106
- Called 40.0% of time when present
- Phage (with cluster) where this start called: Elmer_195 (BE2), Wofford_181 (BE2),

Start 29:

- Found in 23 of 127 (18.1%) of genes in pham
- Manual Annotations of this start: 15 of 106
- Called 82.6% of time when present
- Phage (with cluster) where this start called: Amabiko_185 (BE2), Battuta_182 (BE2), Birchlyn_181 (BE2), Bordeaux_181 (BE2), Gibbi_190 (BE2), IchabodCrane_177 (BE2), JimJam_188 (BE2), Jollison_186 (BE2), Karimac_182 (BE2), KentuckyRacer_191 (BE2), Mugiwara_188 (BE2), PumpkinSpice_184 (BE2), Quaran19_182 (BE2), SaltySpitooon_182 (BE2), Spelly_185 (BE2), Spilled_187 (BE2), Starbow_180 (BE2), TomSawyer_186 (BE2), Wipeout_175 (BE2),

Summary by clusters:

There are 15 clusters represented in this pham: P2, F1, singleton, K8, AD, F, H2, P3, J, F3, N, S, AB, BE2, BE1,

Info for manual annotations of cluster AD:

- Start number 12 was manually annotated 1 time for cluster AD.

Info for manual annotations of cluster BE1:

- Start number 14 was manually annotated 1 time for cluster BE1.
- Start number 20 was manually annotated 1 time for cluster BE1.
- Start number 21 was manually annotated 27 times for cluster BE1.

Info for manual annotations of cluster BE2:

- Start number 20 was manually annotated 6 times for cluster BE2.
- Start number 21 was manually annotated 3 times for cluster BE2.
- Start number 25 was manually annotated 1 time for cluster BE2.
- Start number 29 was manually annotated 15 times for cluster BE2.

Info for manual annotations of cluster F1:

- Start number 12 was manually annotated 4 times for cluster F1.
- Start number 13 was manually annotated 1 time for cluster F1.

Info for manual annotations of cluster F3:

- Start number 12 was manually annotated 1 time for cluster F3.

Info for manual annotations of cluster H2:

- Start number 22 was manually annotated 1 time for cluster H2.

Info for manual annotations of cluster J:

- Start number 18 was manually annotated 12 times for cluster J.

Info for manual annotations of cluster K8:

- Start number 16 was manually annotated 1 time for cluster K8.

Info for manual annotations of cluster N:

- Start number 9 was manually annotated 4 times for cluster N.
- Start number 12 was manually annotated 7 times for cluster N.

Info for manual annotations of cluster P2:

- Start number 16 was manually annotated 1 time for cluster P2.

Info for manual annotations of cluster P3:

- Start number 12 was manually annotated 1 time for cluster P3.

Info for manual annotations of cluster S:

- Start number 20 was manually annotated 15 times for cluster S.

Gene Information:

Gene: 8UZL_63 Start: 44864, Stop: 45175, Start Num: 11

Candidate Starts for 8UZL_63:

(11, 44864), (Start: 20 @44897 has 22 MA's), (26, 44915), (27, 44918), (30, 44933), (31, 44945), (38, 45014), (44, 45050), (54, 45107), (61, 45149),

Gene: Aggie_40 Start: 29489, Stop: 29848, Start Num: 12

Candidate Starts for Aggie_40:

(Start: 12 @29489 has 14 MA's), (27, 29540), (30, 29555), (33, 29624), (34, 29627), (45, 29693), (52, 29732), (56, 29741), (63, 29786), (64, 29789), (73, 29837), (74, 29843),

Gene: Amabiko_185 Start: 95064, Stop: 95360, Start Num: 29

Candidate Starts for Amabiko_185:

(Start: 20 @95028 has 22 MA's), (Start: 29 @95064 has 15 MA's), (33, 95130), (36, 95139), (43, 95184), (46, 95214),

Gene: Anedea_175 Start: 94252, Stop: 94572, Start Num: 21

Candidate Starts for Anedea_175:

(Start: 20 @94243 has 22 MA's), (Start: 21 @94252 has 30 MA's), (41, 94387),

Gene: Angela_171 Start: 93836, Stop: 94156, Start Num: 21

Candidate Starts for Angela_171:

(Start: 20 @93827 has 22 MA's), (Start: 21 @93836 has 30 MA's), (36, 93941), (41, 93971), (44, 93995), (58, 94073),

Gene: Awesomesauce_55 Start: 37254, Stop: 37613, Start Num: 13

Candidate Starts for Awesomesauce_55:

(Start: 12 @37251 has 14 MA's), (Start: 13 @37254 has 1 MA's), (19, 37281), (27, 37302), (30, 37317), (32, 37368), (34, 37389), (45, 37455), (64, 37551), (66, 37563), (73, 37602),

Gene: BabeRuth_46 Start: 31707, Stop: 32066, Start Num: 12

Candidate Starts for BabeRuth_46:

(Start: 9 @31704 has 4 MA's), (Start: 12 @31707 has 14 MA's), (Start: 16 @31722 has 2 MA's), (Start: 22 @31749 has 1 MA's), (30, 31773), (34, 31845), (45, 31911), (56, 31959), (64, 32007), (73, 32055),

Gene: Bartholomune_172 Start: 93699, Stop: 94022, Start Num: 21

Candidate Starts for Bartholomune_172:

(Start: 9 @93648 has 4 MA's), (Start: 14 @93660 has 1 MA's), (Start: 20 @93690 has 22 MA's), (Start: 21 @93699 has 30 MA's), (41, 93837), (43, 93852),

Gene: Battuta_182 Start: 94846, Stop: 95142, Start Num: 29

Candidate Starts for Battuta_182:

(Start: 20 @94810 has 22 MA's), (Start: 29 @94846 has 15 MA's), (33, 94912), (36, 94921), (43, 94966), (46, 94996),

Gene: Beelzebub_68 Start: 36994, Stop: 37332, Start Num: 20

Candidate Starts for Beelzebub_68:

(Start: 20 @36994 has 22 MA's), (39, 37120), (45, 37159), (66, 37276), (71, 37312), (73, 37321),

Gene: Birchlyn_181 Start: 92703, Stop: 92999, Start Num: 29

Candidate Starts for Birchlyn_181:

(Start: 20 @92667 has 22 MA's), (Start: 29 @92703 has 15 MA's), (33, 92769), (36, 92778), (43, 92823), (46, 92853),

Gene: Blackbeetle_64 Start: 36039, Stop: 36377, Start Num: 20

Candidate Starts for Blackbeetle_64:

(Start: 20 @36039 has 22 MA's), (39, 36165), (45, 36204), (66, 36321), (71, 36357), (73, 36366),

Gene: BlueOtter_175 Start: 94859, Stop: 95230, Start Num: 9

Candidate Starts for BlueOtter_175:

(Start: 9 @94859 has 4 MA's), (Start: 14 @94871 has 1 MA's), (Start: 20 @94901 has 22 MA's), (Start: 21 @94910 has 30 MA's), (33, 95006), (41, 95045), (44, 95069),

Gene: Bmoc_175 Start: 94581, Stop: 94901, Start Num: 21

Candidate Starts for Bmoc_175:

(Start: 20 @94572 has 22 MA's), (Start: 21 @94581 has 30 MA's), (41, 94716), (58, 94818),

Gene: Boilgate_48 Start: 37518, Stop: 37862, Start Num: 16

Candidate Starts for Boilgate_48:

(Start: 16 @37518 has 2 MA's), (54, 37749), (64, 37803), (69, 37839), (73, 37851),

Gene: BoomerJR_178 Start: 94666, Stop: 94992, Start Num: 20

Candidate Starts for BoomerJR_178:

(8, 94618), (10, 94624), (15, 94636), (Start: 20 @94666 has 22 MA's), (Start: 21 @94675 has 30 MA's), (28, 94699), (41, 94804), (51, 94879), (63, 94930), (66, 94945),

Gene: Bordeaux_181 Start: 95353, Stop: 95649, Start Num: 29

Candidate Starts for Bordeaux_181:

(Start: 20 @95317 has 22 MA's), (Start: 29 @95353 has 15 MA's), (33, 95419), (36, 95428), (43, 95473), (46, 95503),

Gene: Bosection6_42 Start: 29385, Stop: 29744, Start Num: 12

Candidate Starts for Bosection6_42:

(Start: 12 @29385 has 14 MA's), (19, 29415), (30, 29451), (34, 29523), (45, 29589), (47, 29601), (52, 29628), (56, 29637), (64, 29685), (73, 29733), (74, 29739),

Gene: Braelyn_173 Start: 94759, Stop: 95082, Start Num: 21

Candidate Starts for Braelyn_173:

(Start: 9 @94708 has 4 MA's), (Start: 14 @94720 has 1 MA's), (Start: 20 @94750 has 22 MA's), (Start: 21 @94759 has 30 MA's), (Start: 25 @94768 has 1 MA's), (41, 94897), (43, 94912),

Gene: Caprice_59 Start: 36353, Stop: 36691, Start Num: 20

Candidate Starts for Caprice_59:

(Start: 20 @36353 has 22 MA's), (39, 36479), (45, 36518), (66, 36635), (71, 36671), (73, 36680),

Gene: Charlie_41 Start: 29383, Stop: 29745, Start Num: 12

Candidate Starts for Charlie_41:

(Start: 12 @29383 has 14 MA's), (Start: 13 @29386 has 1 MA's), (19, 29413), (27, 29434), (30, 29449), (32, 29500), (34, 29521), (45, 29587), (64, 29683), (66, 29695), (73, 29734),

Gene: ChickenDinner_56 Start: 37989, Stop: 38351, Start Num: 12

Candidate Starts for ChickenDinner_56:

(Start: 12 @37989 has 14 MA's), (Start: 13 @37992 has 1 MA's), (19, 38019), (27, 38040), (30, 38055), (32, 38106), (34, 38127), (45, 38193), (64, 38289), (66, 38301), (73, 38340),

Gene: Clarkson_65 Start: 36722, Stop: 37060, Start Num: 20

Candidate Starts for Clarkson_65:

(Start: 20 @36722 has 22 MA's), (39, 36848), (45, 36887), (66, 37004), (71, 37040), (73, 37049),

Gene: Corazon_62 Start: 36916, Stop: 37254, Start Num: 20

Candidate Starts for Corazon_62:

(Start: 20 @36916 has 22 MA's), (39, 37042), (45, 37081), (66, 37198), (71, 37234), (73, 37243),

Gene: Cross_172 Start: 95555, Stop: 95875, Start Num: 21

Candidate Starts for Cross_172:

(Start: 9 @95504 has 4 MA's), (Start: 14 @95516 has 1 MA's), (Start: 20 @95546 has 22 MA's), (Start: 21 @95555 has 30 MA's), (33, 95651), (41, 95690), (44, 95714),

Gene: Cursive_171 Start: 93764, Stop: 94084, Start Num: 21

Candidate Starts for Cursive_171:

(Start: 9 @93713 has 4 MA's), (Start: 14 @93725 has 1 MA's), (Start: 20 @93755 has 22 MA's), (Start: 21 @93764 has 30 MA's), (33, 93860), (41, 93899), (44, 93923),

Gene: DS6A_63 Start: 41803, Stop: 42168, Start Num: 23

Candidate Starts for DS6A_63:

(6, 41713), (17, 41773), (Start: 23 @41803 has 1 MA's), (35, 41902), (43, 41944), (45, 41965), (49, 41989), (52, 42004), (68, 42079), (75, 42151), (76, 42157),

Gene: Daubenski_166 Start: 95477, Stop: 95803, Start Num: 21

Candidate Starts for Daubenski_166:

(Start: 9 @95426 has 4 MA's), (Start: 14 @95438 has 1 MA's), (Start: 20 @95468 has 22 MA's), (Start: 21 @95477 has 30 MA's), (36, 95582), (48, 95669), (70, 95786),

Gene: DmpstrDiver_220 Start: 105699, Stop: 105373, Start Num: 18
Candidate Starts for DmpstrDiver_220:
(Start: 18 @105699 has 12 MA's), (37, 105579), (40, 105564), (48, 105504), (64, 105429),

Gene: DocMcStuffins_53 Start: 37992, Stop: 38351, Start Num: 13
Candidate Starts for DocMcStuffins_53:
(Start: 12 @37989 has 14 MA's), (Start: 13 @37992 has 1 MA's), (19, 38019), (27, 38040), (30, 38055), (32, 38106), (34, 38127), (45, 38193), (64, 38289), (66, 38301), (73, 38340),

Gene: DrLupo_58 Start: 42483, Stop: 42806, Start Num: 22
Candidate Starts for DrLupo_58:
(Start: 22 @42483 has 1 MA's), (42, 42624), (45, 42648), (47, 42660), (49, 42675), (57, 42705), (59, 42720), (62, 42738),

Gene: Duke13_223 Start: 106493, Stop: 106167, Start Num: 18
Candidate Starts for Duke13_223:
(Start: 18 @106493 has 12 MA's), (40, 106358), (50, 106283), (51, 106280), (64, 106223), (65, 106220),

Gene: EGole_174 Start: 96572, Stop: 96892, Start Num: 21
Candidate Starts for EGole_174:
(Start: 9 @96521 has 4 MA's), (Start: 14 @96533 has 1 MA's), (Start: 20 @96563 has 22 MA's), (Start: 21 @96572 has 30 MA's), (33, 96668), (41, 96707), (44, 96731),

Gene: Elmer_195 Start: 98217, Stop: 98528, Start Num: 25
Candidate Starts for Elmer_195:
(Start: 9 @98157 has 4 MA's), (Start: 20 @98199 has 22 MA's), (Start: 21 @98208 has 30 MA's), (Start: 25 @98217 has 1 MA's), (28, 98232), (36, 98310), (41, 98340), (51, 98415),

Gene: Enygma_186 Start: 97654, Stop: 97986, Start Num: 20
Candidate Starts for Enygma_186:
(Start: 20 @97654 has 22 MA's), (Start: 29 @97690 has 15 MA's), (36, 97765),

Gene: Evy_166 Start: 94943, Stop: 95302, Start Num: 14
Candidate Starts for Evy_166:
(Start: 9 @94931 has 4 MA's), (Start: 14 @94943 has 1 MA's), (Start: 20 @94973 has 22 MA's), (Start: 21 @94982 has 30 MA's), (33, 95078), (41, 95117),

Gene: FF47_60 Start: 44778, Stop: 45089, Start Num: 11
Candidate Starts for FF47_60:
(1, 44595), (2, 44676), (11, 44778), (Start: 20 @44811 has 22 MA's), (26, 44829), (27, 44832), (30, 44847), (31, 44859), (38, 44928), (44, 44964), (61, 45063),

Gene: Frankie_60 Start: 40470, Stop: 40832, Start Num: 12
Candidate Starts for Frankie_60:
(Start: 12 @40470 has 14 MA's), (15, 40479), (Start: 16 @40485 has 2 MA's), (27, 40521), (30, 40536), (32, 40587), (34, 40608), (45, 40674), (64, 40770), (66, 40782), (73, 40821),

Gene: Gattaca_62 Start: 36143, Stop: 36481, Start Num: 20
Candidate Starts for Gattaca_62:
(Start: 20 @36143 has 22 MA's), (39, 36269), (45, 36308), (66, 36425), (71, 36461), (73, 36470),

Gene: Genie2_178 Start: 94780, Stop: 95106, Start Num: 20

Candidate Starts for Genie2_178:

(8, 94732), (10, 94738), (15, 94750), (Start: 20 @94780 has 22 MA's), (Start: 21 @94789 has 30 MA's), (28, 94813), (41, 94918), (51, 94993), (63, 95044), (66, 95059),

Gene: Gibbi_190 Start: 95641, Stop: 95937, Start Num: 29

Candidate Starts for Gibbi_190:

(Start: 20 @95605 has 22 MA's), (Start: 29 @95641 has 15 MA's), (33, 95707), (36, 95716), (43, 95761), (46, 95791),

Gene: HangryHippo_175 Start: 94859, Stop: 95230, Start Num: 9

Candidate Starts for HangryHippo_175:

(Start: 9 @94859 has 4 MA's), (Start: 14 @94871 has 1 MA's), (Start: 20 @94901 has 22 MA's), (Start: 21 @94910 has 30 MA's), (33, 95006), (41, 95045), (44, 95069),

Gene: Hannaconda_212 Start: 105480, Stop: 105154, Start Num: 18

Candidate Starts for Hannaconda_212:

(Start: 18 @105480 has 12 MA's), (40, 105345), (50, 105270), (51, 105267), (64, 105210), (65, 105207),

Gene: Huphlebuff_66 Start: 36527, Stop: 36865, Start Num: 20

Candidate Starts for Huphlebuff_66:

(Start: 20 @36527 has 22 MA's), (39, 36653), (45, 36692), (66, 36809), (71, 36845), (73, 36854),

Gene: IchabodCrane_177 Start: 94765, Stop: 95061, Start Num: 29

Candidate Starts for IchabodCrane_177:

(Start: 20 @94729 has 22 MA's), (Start: 29 @94765 has 15 MA's), (33, 94831), (36, 94840), (43, 94885), (46, 94915),

Gene: Jay2Jay_178 Start: 95781, Stop: 96101, Start Num: 21

Candidate Starts for Jay2Jay_178:

(Start: 9 @95730 has 4 MA's), (Start: 14 @95742 has 1 MA's), (Start: 20 @95772 has 22 MA's), (Start: 21 @95781 has 30 MA's), (33, 95877), (41, 95916),

Gene: JimJam_188 Start: 96686, Stop: 96982, Start Num: 29

Candidate Starts for JimJam_188:

(Start: 20 @96650 has 22 MA's), (Start: 29 @96686 has 15 MA's), (33, 96752), (36, 96761), (43, 96806), (46, 96836),

Gene: JoieB_65 Start: 36960, Stop: 37298, Start Num: 20

Candidate Starts for JoieB_65:

(Start: 20 @36960 has 22 MA's), (39, 37086), (45, 37125), (66, 37242), (71, 37278), (73, 37287),

Gene: Jollison_186 Start: 95287, Stop: 95583, Start Num: 29

Candidate Starts for Jollison_186:

(Start: 20 @95251 has 22 MA's), (Start: 29 @95287 has 15 MA's), (33, 95353), (36, 95362), (43, 95407), (46, 95437),

Gene: Journey_43 Start: 29386, Stop: 29745, Start Num: 13

Candidate Starts for Journey_43:

(Start: 12 @29383 has 14 MA's), (Start: 13 @29386 has 1 MA's), (19, 29413), (27, 29434), (30, 29449), (32, 29500), (34, 29521), (45, 29587), (64, 29683), (66, 29695), (73, 29734),

Gene: Kalah2_221 Start: 107782, Stop: 107456, Start Num: 18

Candidate Starts for Kalah2_221:

(Start: 18 @107782 has 12 MA's), (40, 107647), (50, 107572), (51, 107569), (64, 107512), (65, 107509),

Gene: Karimac_182 Start: 95481, Stop: 95777, Start Num: 29

Candidate Starts for Karimac_182:

(Start: 20 @95445 has 22 MA's), (Start: 29 @95481 has 15 MA's), (36, 95556), (43, 95601), (46, 95631),

Gene: KashFlow_213 Start: 105374, Stop: 105048, Start Num: 18

Candidate Starts for KashFlow_213:

(Start: 18 @105374 has 12 MA's), (40, 105239), (50, 105164), (51, 105161), (64, 105104), (65, 105101),

Gene: KentuckyRacer_191 Start: 96432, Stop: 96728, Start Num: 29

Candidate Starts for KentuckyRacer_191:

(Start: 20 @96396 has 22 MA's), (Start: 29 @96432 has 15 MA's), (33, 96498), (36, 96507), (43, 96552), (46, 96582),

Gene: Larnav_181 Start: 95478, Stop: 95849, Start Num: 9

Candidate Starts for Larnav_181:

(Start: 9 @95478 has 4 MA's), (Start: 14 @95490 has 1 MA's), (Start: 20 @95520 has 22 MA's), (Start: 21 @95529 has 30 MA's), (33, 95625), (41, 95664), (44, 95688),

Gene: Leo04_173 Start: 95410, Stop: 95730, Start Num: 21

Candidate Starts for Leo04_173:

(Start: 9 @95359 has 4 MA's), (Start: 14 @95371 has 1 MA's), (Start: 20 @95401 has 22 MA's), (Start: 21 @95410 has 30 MA's), (33, 95506), (41, 95545), (44, 95569),

Gene: Liandry_172 Start: 94442, Stop: 94765, Start Num: 21

Candidate Starts for Liandry_172:

(Start: 9 @94391 has 4 MA's), (Start: 14 @94403 has 1 MA's), (Start: 20 @94433 has 22 MA's), (Start: 21 @94442 has 30 MA's), (41, 94580), (43, 94595),

Gene: LilMartin_169 Start: 93455, Stop: 93775, Start Num: 21

Candidate Starts for LilMartin_169:

(Start: 20 @93446 has 22 MA's), (Start: 21 @93455 has 30 MA's), (36, 93560), (41, 93590), (44, 93614), (58, 93692),

Gene: LilSpotty_55 Start: 36520, Stop: 36927, Start Num: 5

Candidate Starts for LilSpotty_55:

(Start: 5 @36520 has 1 MA's), (Start: 12 @36565 has 14 MA's), (27, 36616), (30, 36631), (33, 36700), (34, 36703), (45, 36769), (64, 36865), (66, 36877), (73, 36916),

Gene: Lucky2013_216 Start: 102433, Stop: 102107, Start Num: 18

Candidate Starts for Lucky2013_216:

(Start: 18 @102433 has 12 MA's), (40, 102298), (50, 102223), (51, 102220), (64, 102163), (65, 102160),

Gene: LukeCage_181 Start: 96206, Stop: 96538, Start Num: 20

Candidate Starts for LukeCage_181:

(Start: 20 @96206 has 22 MA's), (Start: 29 @96242 has 15 MA's), (36, 96317), (41, 96347), (43, 96362),

Gene: Lululemon_175 Start: 94240, Stop: 94611, Start Num: 9
Candidate Starts for Lululemon_175:
(Start: 9 @94240 has 4 MA's), (Start: 14 @94252 has 1 MA's), (Start: 20 @94282 has 22 MA's), (Start: 21 @94291 has 30 MA's), (33, 94387), (41, 94426), (44, 94450),

Gene: Marvin_60 Start: 36210, Stop: 36548, Start Num: 20
Candidate Starts for Marvin_60:
(Start: 20 @36210 has 22 MA's), (39, 36336), (45, 36375), (66, 36492), (71, 36528), (73, 36537),

Gene: MiaZeal_228 Start: 104572, Stop: 104246, Start Num: 18
Candidate Starts for MiaZeal_228:
(Start: 18 @104572 has 12 MA's), (40, 104437), (50, 104362), (51, 104359), (64, 104302), (65, 104299),

Gene: Mildred21_180 Start: 93826, Stop: 94146, Start Num: 21
Candidate Starts for Mildred21_180:
(Start: 9 @93775 has 4 MA's), (Start: 14 @93787 has 1 MA's), (Start: 20 @93817 has 22 MA's), (Start: 21 @93826 has 30 MA's), (36, 93931), (41, 93961),

Gene: MindFlayer_176 Start: 94636, Stop: 94968, Start Num: 20
Candidate Starts for MindFlayer_176:
(Start: 20 @94636 has 22 MA's), (Start: 29 @94672 has 15 MA's), (33, 94738), (36, 94747), (43, 94792), (46, 94822),

Gene: Minerva_218 Start: 104286, Stop: 103960, Start Num: 18
Candidate Starts for Minerva_218:
(Start: 18 @104286 has 12 MA's), (40, 104151), (50, 104076), (51, 104073), (64, 104016), (65, 104013),

Gene: Misha28_53 Start: 37256, Stop: 37618, Start Num: 12
Candidate Starts for Misha28_53:
(Start: 12 @37256 has 14 MA's), (Start: 13 @37259 has 1 MA's), (19, 37286), (27, 37307), (30, 37322), (32, 37373), (34, 37394), (45, 37460), (64, 37556), (66, 37568), (73, 37607),

Gene: MooMoo_52 Start: 37750, Stop: 38121, Start Num: 7
Candidate Starts for MooMoo_52:
(Start: 7 @37750 has 1 MA's), (27, 37816), (30, 37831), (45, 37969), (49, 37993), (55, 38014), (60, 38044), (68, 38083), (69, 38101), (72, 38104), (73, 38110),

Gene: MosMoris_61 Start: 36143, Stop: 36481, Start Num: 20
Candidate Starts for MosMoris_61:
(Start: 20 @36143 has 22 MA's), (39, 36269), (45, 36308), (66, 36425), (71, 36461), (73, 36470),

Gene: Mugiwara_188 Start: 96069, Stop: 96365, Start Num: 29
Candidate Starts for Mugiwara_188:
(Start: 20 @96033 has 22 MA's), (Start: 29 @96069 has 15 MA's), (36, 96144), (41, 96174), (53, 96252),

Gene: MulchMansion_170 Start: 94098, Stop: 94418, Start Num: 21
Candidate Starts for MulchMansion_170:
(Start: 20 @94089 has 22 MA's), (Start: 21 @94098 has 30 MA's), (36, 94203), (41, 94233), (44, 94257), (58, 94335),

Gene: MulchSalad_54 Start: 36454, Stop: 36801, Start Num: 16

Candidate Starts for MulchSalad_54:

(Start: 12 @36439 has 14 MA's), (15, 36448), (Start: 16 @36454 has 2 MA's), (27, 36490), (30, 36505), (32, 36556), (34, 36577), (45, 36643), (64, 36739), (66, 36751), (73, 36790),

Gene: Nenae_45 Start: 31706, Stop: 32068, Start Num: 9

Candidate Starts for Nenae_45:

(Start: 9 @31706 has 4 MA's), (Start: 12 @31709 has 14 MA's), (Start: 16 @31724 has 2 MA's), (Start: 22 @31751 has 1 MA's), (30, 31775), (34, 31847), (45, 31913), (56, 31961), (64, 32009), (73, 32057),

Gene: NootNoot_169 Start: 93493, Stop: 93825, Start Num: 20

Candidate Starts for NootNoot_169:

(Start: 9 @93451 has 4 MA's), (Start: 14 @93463 has 1 MA's), (Start: 20 @93493 has 22 MA's), (Start: 21 @93502 has 30 MA's), (Start: 25 @93511 has 1 MA's), (41, 93640), (43, 93655),

Gene: Odette_222 Start: 107131, Stop: 106805, Start Num: 18

Candidate Starts for Odette_222:

(Start: 18 @107131 has 12 MA's), (40, 106996), (50, 106921), (51, 106918), (64, 106861), (65, 106858),

Gene: PacManQ_175 Start: 94240, Stop: 94611, Start Num: 9

Candidate Starts for PacManQ_175:

(Start: 9 @94240 has 4 MA's), (Start: 14 @94252 has 1 MA's), (Start: 20 @94282 has 22 MA's), (Start: 21 @94291 has 30 MA's), (33, 94387), (41, 94426), (44, 94450),

Gene: Paradiddles_166 Start: 95805, Stop: 96128, Start Num: 21

Candidate Starts for Paradiddles_166:

(Start: 9 @95754 has 4 MA's), (Start: 14 @95766 has 1 MA's), (Start: 20 @95796 has 22 MA's), (Start: 21 @95805 has 30 MA's), (Start: 25 @95814 has 1 MA's), (41, 95943), (43, 95958),

Gene: Peebs_170 Start: 95232, Stop: 95552, Start Num: 21

Candidate Starts for Peebs_170:

(Start: 9 @95181 has 4 MA's), (Start: 14 @95193 has 1 MA's), (Start: 20 @95223 has 22 MA's), (Start: 21 @95232 has 30 MA's), (33, 95328), (41, 95367), (44, 95391),

Gene: Pepperwood_171 Start: 95176, Stop: 95496, Start Num: 21

Candidate Starts for Pepperwood_171:

(Start: 9 @95125 has 4 MA's), (Start: 14 @95137 has 1 MA's), (Start: 20 @95167 has 22 MA's), (Start: 21 @95176 has 30 MA's), (33, 95272), (41, 95311), (44, 95335),

Gene: Persimmon_173 Start: 93674, Stop: 93997, Start Num: 21

Candidate Starts for Persimmon_173:

(Start: 9 @93623 has 4 MA's), (Start: 14 @93635 has 1 MA's), (Start: 20 @93665 has 22 MA's), (Start: 21 @93674 has 30 MA's), (36, 93782), (41, 93812), (43, 93827), (44, 93836),

Gene: PhancyPhin_45 Start: 31700, Stop: 32062, Start Num: 9

Candidate Starts for PhancyPhin_45:

(Start: 9 @31700 has 4 MA's), (Start: 12 @31703 has 14 MA's), (Start: 16 @31718 has 2 MA's), (Start: 22 @31745 has 1 MA's), (30, 31769), (34, 31841), (45, 31907), (56, 31955), (64, 32003), (73, 32051),

Gene: PinkiePie_170 Start: 94442, Stop: 94765, Start Num: 21

Candidate Starts for PinkiePie_170:

(Start: 9 @94391 has 4 MA's), (Start: 14 @94403 has 1 MA's), (Start: 20 @94433 has 22 MA's), (Start: 21 @94442 has 30 MA's), (41, 94580), (43, 94595),

Gene: Piper2020_55 Start: 37972, Stop: 38334, Start Num: 12

Candidate Starts for Piper2020_55:

(Start: 12 @37972 has 14 MA's), (Start: 13 @37975 has 1 MA's), (19, 38002), (27, 38023), (30, 38038), (32, 38089), (34, 38110), (45, 38176), (64, 38272), (66, 38284), (73, 38323),

Gene: Poise_64 Start: 36039, Stop: 36377, Start Num: 20

Candidate Starts for Poise_64:

(Start: 20 @36039 has 22 MA's), (39, 36165), (45, 36204), (66, 36321), (71, 36357), (73, 36366),

Gene: Porcelain_219 Start: 103380, Stop: 103054, Start Num: 18

Candidate Starts for Porcelain_219:

(Start: 18 @103380 has 12 MA's), (40, 103245), (50, 103170), (51, 103167), (64, 103110), (65, 103107),

Gene: Pound_210 Start: 104474, Stop: 104148, Start Num: 18

Candidate Starts for Pound_210:

(Start: 18 @104474 has 12 MA's), (40, 104339), (50, 104264), (51, 104261), (64, 104204), (65, 104201),

Gene: Pringar_63 Start: 36328, Stop: 36666, Start Num: 20

Candidate Starts for Pringar_63:

(Start: 20 @36328 has 22 MA's), (39, 36454), (45, 36493), (66, 36610), (71, 36646), (73, 36655),

Gene: PumpkinSpice_184 Start: 95893, Stop: 96189, Start Num: 29

Candidate Starts for PumpkinSpice_184:

(Start: 20 @95857 has 22 MA's), (Start: 29 @95893 has 15 MA's), (33, 95959), (36, 95968), (43, 96013), (46, 96043),

Gene: Purgamenstris_45 Start: 31707, Stop: 32066, Start Num: 12

Candidate Starts for Purgamenstris_45:

(Start: 9 @31704 has 4 MA's), (Start: 12 @31707 has 14 MA's), (Start: 16 @31722 has 2 MA's), (Start: 22 @31749 has 1 MA's), (30, 31773), (34, 31845), (45, 31911), (56, 31959), (64, 32007), (73, 32055),

Gene: Quaran19_182 Start: 95332, Stop: 95628, Start Num: 29

Candidate Starts for Quaran19_182:

(Start: 20 @95296 has 22 MA's), (Start: 29 @95332 has 15 MA's), (33, 95398), (36, 95407), (43, 95452), (46, 95482),

Gene: Raela_64 Start: 36596, Stop: 36934, Start Num: 20

Candidate Starts for Raela_64:

(Start: 20 @36596 has 22 MA's), (39, 36722), (45, 36761), (66, 36878), (71, 36914), (73, 36923),

Gene: Raymond7_39 Start: 31495, Stop: 31854, Start Num: 12

Candidate Starts for Raymond7_39:

(Start: 9 @31492 has 4 MA's), (Start: 12 @31495 has 14 MA's), (Start: 16 @31510 has 2 MA's), (Start: 22 @31537 has 1 MA's), (30, 31561), (34, 31633), (45, 31699), (56, 31747), (64, 31795), (73, 31843),

Gene: Rebel_37 Start: 27837, Stop: 28196, Start Num: 12

Candidate Starts for Rebel_37:

(Start: 9 @27834 has 4 MA's), (Start: 12 @27837 has 14 MA's), (Start: 16 @27852 has 2 MA's), (Start: 22 @27879 has 1 MA's), (30, 27903), (34, 27975), (45, 28041), (56, 28089), (64, 28137), (73, 28185),

Gene: RedRaider77_63 Start: 35984, Stop: 36322, Start Num: 20

Candidate Starts for RedRaider77_63:

(Start: 20 @35984 has 22 MA's), (39, 36110), (45, 36149), (66, 36266), (71, 36302), (73, 36311),

Gene: Redi_45 Start: 31703, Stop: 32065, Start Num: 9

Candidate Starts for Redi_45:

(Start: 9 @31703 has 4 MA's), (Start: 12 @31706 has 14 MA's), (Start: 16 @31721 has 2 MA's), (Start: 22 @31748 has 1 MA's), (30, 31772), (34, 31844), (45, 31910), (56, 31958), (64, 32006), (73, 32054),

Gene: SaltySpittoon_182 Start: 94876, Stop: 95172, Start Num: 29

Candidate Starts for SaltySpittoon_182:

(Start: 20 @94840 has 22 MA's), (Start: 29 @94876 has 15 MA's), (33, 94942), (36, 94951), (43, 94996), (46, 95026),

Gene: Samisti12_174 Start: 96616, Stop: 96936, Start Num: 21

Candidate Starts for Samisti12_174:

(Start: 9 @96565 has 4 MA's), (Start: 14 @96577 has 1 MA's), (Start: 20 @96607 has 22 MA's), (Start: 21 @96616 has 30 MA's), (33, 96712), (41, 96751), (44, 96775),

Gene: Schatzie_212 Start: 105010, Stop: 104684, Start Num: 18

Candidate Starts for Schatzie_212:

(Start: 18 @105010 has 12 MA's), (40, 104875), (50, 104800), (51, 104797), (64, 104740), (65, 104737),

Gene: Sejanus_55 Start: 46982, Stop: 47341, Start Num: 12

Candidate Starts for Sejanus_55:

(Start: 12 @46982 has 14 MA's), (19, 47012), (30, 47048), (34, 47120), (45, 47186), (47, 47198), (52, 47225), (56, 47234), (64, 47282), (73, 47330),

Gene: ShrimpFriedEgg_45 Start: 31703, Stop: 32065, Start Num: 9

Candidate Starts for ShrimpFriedEgg_45:

(Start: 9 @31703 has 4 MA's), (Start: 12 @31706 has 14 MA's), (Start: 16 @31721 has 2 MA's), (Start: 22 @31748 has 1 MA's), (30, 31772), (34, 31844), (45, 31910), (56, 31958), (64, 32006), (73, 32054),

Gene: Silvy_42 Start: 29489, Stop: 29848, Start Num: 12

Candidate Starts for Silvy_42:

(Start: 12 @29489 has 14 MA's), (27, 29540), (30, 29555), (33, 29624), (34, 29627), (45, 29693), (52, 29732), (56, 29741), (63, 29786), (64, 29789), (73, 29837), (74, 29843),

Gene: SkinnyPete_39 Start: 29165, Stop: 29524, Start Num: 12

Candidate Starts for SkinnyPete_39:

(Start: 12 @29165 has 14 MA's), (15, 29174), (Start: 16 @29180 has 2 MA's), (30, 29231), (34, 29303), (45, 29369), (47, 29381), (52, 29408), (56, 29417), (64, 29465), (73, 29513),

Gene: Sollertia_178 Start: 94789, Stop: 95106, Start Num: 21

Candidate Starts for Sollertia_178:

(8, 94732), (10, 94738), (15, 94750), (Start: 20 @94780 has 22 MA's), (Start: 21 @94789 has 30 MA's), (28, 94813), (41, 94918), (51, 94993), (63, 95044), (66, 95059),

Gene: Spelly_185 Start: 94805, Stop: 95101, Start Num: 29

Candidate Starts for Spelly_185:

(Start: 20 @94769 has 22 MA's), (Start: 29 @94805 has 15 MA's), (33, 94871), (36, 94880), (43, 94925), (46, 94955),

Gene: Spilled_187 Start: 95618, Stop: 95914, Start Num: 29

Candidate Starts for Spilled_187:

(Start: 20 @95582 has 22 MA's), (Start: 29 @95618 has 15 MA's), (36, 95693), (43, 95738), (46, 95768),

Gene: Squillium_173 Start: 94444, Stop: 94767, Start Num: 21

Candidate Starts for Squillium_173:

(Start: 9 @94393 has 4 MA's), (Start: 14 @94405 has 1 MA's), (Start: 20 @94435 has 22 MA's), (Start: 21 @94444 has 30 MA's), (41, 94582), (43, 94597),

Gene: Squirty_52 Start: 37353, Stop: 37712, Start Num: 12

Candidate Starts for Squirty_52:

(Start: 9 @37350 has 4 MA's), (Start: 12 @37353 has 14 MA's), (15, 37362), (Start: 16 @37368 has 2 MA's), (Start: 22 @37395 has 1 MA's), (30, 37419), (33, 37488), (34, 37491), (45, 37557), (52, 37596), (56, 37605), (63, 37650), (64, 37653), (73, 37701), (74, 37707),

Gene: Stanimal_177 Start: 95150, Stop: 95467, Start Num: 21

Candidate Starts for Stanimal_177:

(8, 95093), (10, 95099), (15, 95111), (Start: 20 @95141 has 22 MA's), (Start: 21 @95150 has 30 MA's), (28, 95174), (41, 95279), (51, 95354), (63, 95405), (66, 95420),

Gene: StarPlatinum_189 Start: 97255, Stop: 97587, Start Num: 20

Candidate Starts for StarPlatinum_189:

(Start: 20 @97255 has 22 MA's), (Start: 29 @97291 has 15 MA's), (36, 97366), (41, 97396), (43, 97411),

Gene: Starbow_180 Start: 94849, Stop: 95145, Start Num: 29

Candidate Starts for Starbow_180:

(Start: 20 @94813 has 22 MA's), (Start: 29 @94849 has 15 MA's), (33, 94915), (36, 94924), (43, 94969), (46, 94999),

Gene: Sushi23_172 Start: 95590, Stop: 95910, Start Num: 21

Candidate Starts for Sushi23_172:

(Start: 9 @95539 has 4 MA's), (Start: 14 @95551 has 1 MA's), (Start: 20 @95581 has 22 MA's), (Start: 21 @95590 has 30 MA's), (33, 95686), (41, 95725), (44, 95749),

Gene: Targaryen_172 Start: 96191, Stop: 96511, Start Num: 21

Candidate Starts for Targaryen_172:

(Start: 9 @96140 has 4 MA's), (Start: 14 @96152 has 1 MA's), (Start: 20 @96182 has 22 MA's), (Start: 21 @96191 has 30 MA's), (33, 96287), (41, 96326),

Gene: Tesla_61 Start: 35833, Stop: 36171, Start Num: 20

Candidate Starts for Tesla_61:

(Start: 20 @35833 has 22 MA's), (39, 35959), (45, 35998), (66, 36115), (71, 36151), (73, 36160),

Gene: Teutsch_171 Start: 95714, Stop: 96034, Start Num: 21

Candidate Starts for Teutsch_171:

(Start: 9 @95663 has 4 MA's), (Start: 14 @95675 has 1 MA's), (Start: 20 @95705 has 22 MA's), (Start: 21 @95714 has 30 MA's), (33, 95810), (41, 95849), (44, 95873),

Gene: ThreeRngTarjay_220 Start: 107485, Stop: 107159, Start Num: 18
Candidate Starts for ThreeRngTarjay_220:
(Start: 18 @107485 has 12 MA's), (40, 107350), (50, 107275), (51, 107272), (64, 107215), (65, 107212),

Gene: TomSawyer_186 Start: 96537, Stop: 96833, Start Num: 29
Candidate Starts for TomSawyer_186:
(Start: 20 @96501 has 22 MA's), (Start: 29 @96537 has 15 MA's), (33, 96603), (36, 96612), (43, 96657), (46, 96687),

Gene: TootsiePop_53 Start: 37256, Stop: 37618, Start Num: 12
Candidate Starts for TootsiePop_53:
(Start: 12 @37256 has 14 MA's), (Start: 13 @37259 has 1 MA's), (19, 37286), (27, 37307), (30, 37322), (32, 37373), (34, 37394), (45, 37460), (64, 37556), (66, 37568), (73, 37607),

Gene: Tortellini_47 Start: 37188, Stop: 37532, Start Num: 16
Candidate Starts for Tortellini_47:
(4, 37122), (Start: 9 @37170 has 4 MA's), (Start: 12 @37173 has 14 MA's), (15, 37182), (Start: 16 @37188 has 2 MA's), (30, 37239), (34, 37311), (45, 37377), (56, 37425), (64, 37473), (73, 37521), (74, 37527),

Gene: Tribute_170 Start: 95731, Stop: 96051, Start Num: 21
Candidate Starts for Tribute_170:
(Start: 9 @95680 has 4 MA's), (Start: 14 @95692 has 1 MA's), (Start: 20 @95722 has 22 MA's), (Start: 21 @95731 has 30 MA's), (33, 95827), (41, 95866), (44, 95890),

Gene: VasuNzinga_63 Start: 35902, Stop: 36240, Start Num: 20
Candidate Starts for VasuNzinga_63:
(Start: 20 @35902 has 22 MA's), (39, 36028), (45, 36067), (66, 36184), (71, 36220), (73, 36229),

Gene: Warpy_176 Start: 95260, Stop: 95580, Start Num: 21
Candidate Starts for Warpy_176:
(Start: 9 @95209 has 4 MA's), (Start: 14 @95221 has 1 MA's), (Start: 20 @95251 has 22 MA's), (Start: 21 @95260 has 30 MA's), (24, 95266), (33, 95356), (41, 95395),

Gene: Watermoore_171 Start: 96126, Stop: 96446, Start Num: 21
Candidate Starts for Watermoore_171:
(Start: 9 @96075 has 4 MA's), (Start: 14 @96087 has 1 MA's), (Start: 20 @96117 has 22 MA's), (Start: 21 @96126 has 30 MA's), (33, 96222), (41, 96261), (44, 96285),

Gene: Wipeout_175 Start: 95881, Stop: 96177, Start Num: 29
Candidate Starts for Wipeout_175:
(Start: 20 @95845 has 22 MA's), (Start: 29 @95881 has 15 MA's), (33, 95947), (36, 95956), (43, 96001), (46, 96031),

Gene: Wofford_181 Start: 98176, Stop: 98487, Start Num: 25
Candidate Starts for Wofford_181:
(Start: 9 @98116 has 4 MA's), (Start: 20 @98158 has 22 MA's), (Start: 21 @98167 has 30 MA's), (Start: 25 @98176 has 1 MA's), (28, 98191), (36, 98269), (41, 98299), (51, 98374), (67, 98443),

Gene: Xavia_47 Start: 37009, Stop: 37368, Start Num: 12
Candidate Starts for Xavia_47:

(3, 36952), (Start: 12 @37009 has 14 MA's), (Start: 16 @37024 has 2 MA's), (19, 37039), (30, 37075), (34, 37147), (45, 37213), (52, 37252), (64, 37309), (73, 37357),

Gene: Yaboi_181 Start: 94724, Stop: 95041, Start Num: 21

Candidate Starts for Yaboi_181:

(8, 94667), (10, 94673), (15, 94685), (Start: 20 @94715 has 22 MA's), (Start: 21 @94724 has 30 MA's), (28, 94748), (41, 94853), (51, 94928), (63, 94979), (66, 94994),