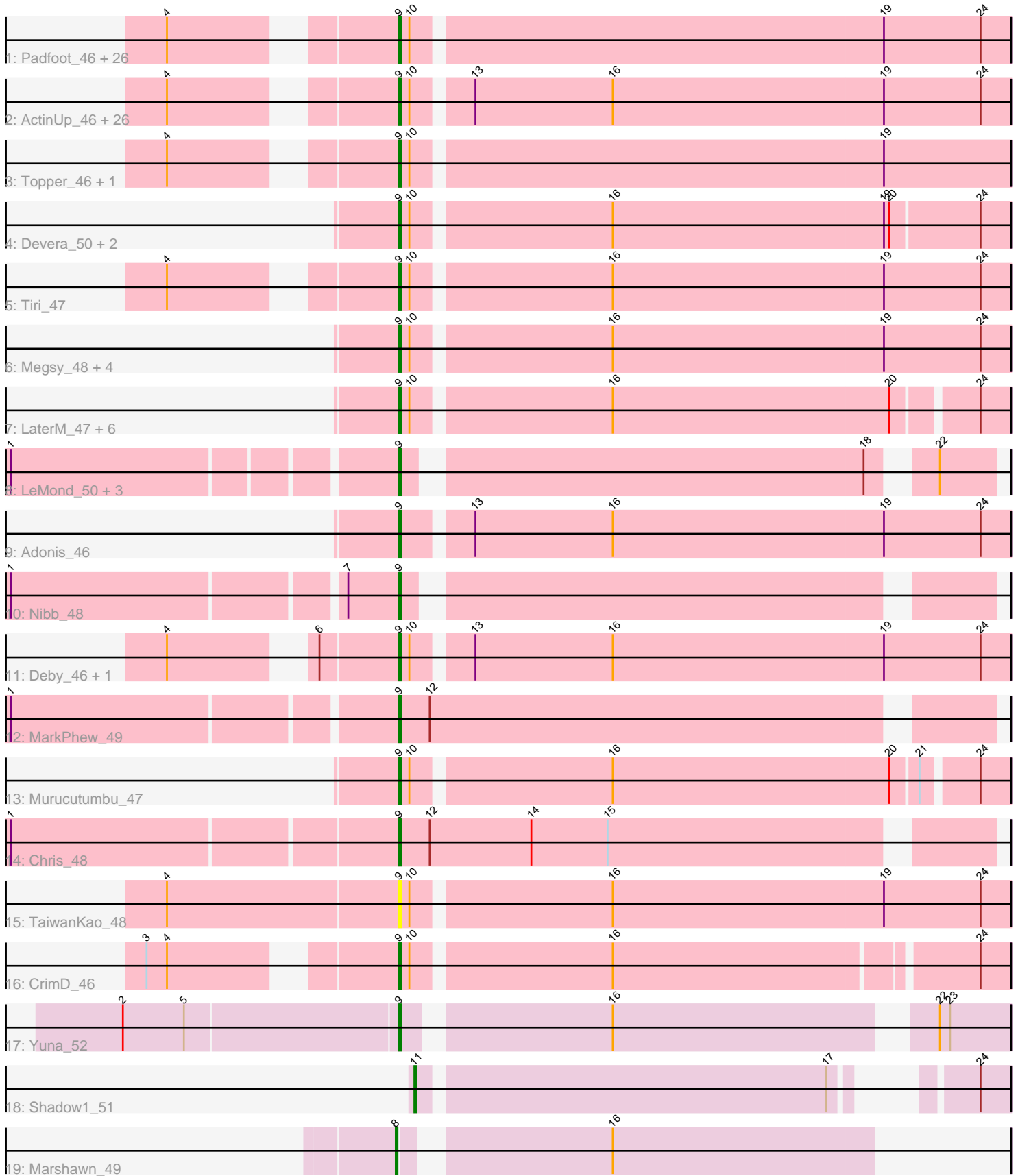


Pham 157782



Note: Tracks are now grouped by subcluster and scaled. Switching in subcluster is indicated by changes in track color. Track scale is now set by default to display the region 30 bp upstream of start 1 to 30 bp downstream of the last possible start. If this default region is judged to be packed too tightly with annotated starts, the track will be further scaled to only show that region of the ORF with annotated starts. This action will be indicated by adding "Zoomed" to the title. For starts, yellow indicates the location of called starts comprised solely of Glimmer/GeneMark auto-annotations, green indicates the location of called starts with at least 1 manual gene annotation.

Pham 157782 Report

This analysis was run 04/13/24 on database version 558.

Pham number 157782 has 88 members, 5 are drafts.

Phages represented in each track:

- Track 1 : Padfoot_46, Llorens_46, BEEST_46, Dalmuri_46, CaseJules_47, Jeckyll_46, Rosmarinus_46, CREW_46, Boiiii_46, BGIlluviae_46, Joy99_46, Asayake_46, Blizzard_46, Belladonna_46, Adephagia_46, Homura_46, Inky_46, JAWS_46, Spock_46, Capricorn_46, Hyperbowlee_46, ShiaSurprise_47, Durfee_46, Piatt_46, Jarvi_46, Twitch_46, Peel_46
- Track 2 : ActinUp_46, Jayhawk_47, Ramen_46, BarrelRoll_46, AlishaPH_46, Geraldini_48, TruffulaTree_46, Apocalypse_49, CheetoDust_45, Zabiza_42, Atiba_46, Veliki_46, Beezoo_48, Rapunzel97_46, Zavala_47, Angelica_46, Mynx_47, Pokerus_45, HedwigODU_46, MeaningOfLife_47, Ganymede_47, QuincyRose_45, YoureAdopted_45, Padpat_47, Tachez_46, Slimphazie_46, Emerson_47
- Track 3 : Topper_46, Lunahalos_46
- Track 4 : Devera_50, Illumine_49, Dole_49
- Track 5 : Tiri_47
- Track 6 : Megsy_48, BaghaKamala_45, LindNT_45, TreyKay_47, Prithvi_47
- Track 7 : LaterM_47, Ageofdapage_48, Urkel_47, Stinson_47, SamuelLPlaqson_47, TiniBug_47, DrHayes_47
- Track 8 : LeMond_50, Scarlett_50, KiSi_50, Oscar_50
- Track 9 : Adonis_46
- Track 10 : Nibb_48
- Track 11 : Deby_46, Sulley_46
- Track 12 : MarkPhew_49
- Track 13 : Murucutumbu_47
- Track 14 : Chris_48
- Track 15 : TaiwanKao_48
- Track 16 : CrimD_46
- Track 17 : Yuna_52
- Track 18 : Shadow1_51
- Track 19 : Marshawn_49

Summary of Final Annotations (See graph section above for start numbers):

The start number called the most often in the published annotations is 9, it was called in 81 of the 83 non-draft genes in the pham.

Genes that call this "Most Annotated" start:

- ActinUp_46, Adephagia_46, Adonis_46, Ageofdapage_48, AlishaPH_46, Angelica_46, Apocalypse_49, Asayake_46, Atiba_46, BEEST_46, BGIlluviae_46, BaghaKamala_45, BarrelRoll_46, Beezoo_48, Belladonna_46, Blizzard_46, Boiiii_46, CREW_46, Capricorn_46, CaseJules_47, CheetoDust_45, Chris_48, CrimD_46, Dalmuri_46, Deby_46, Devera_50, Dole_49, DrHayes_47, Durfee_46, Emerson_47, Ganymede_47, Geraldini_48, HedwigODU_46, Homura_46, Hyperbowlee_46, Illumine_49, Inky_46, JAWS_46, Jarvi_46, Jayhawk_47, Jeckyll_46, Joy99_46, KiSi_50, LaterM_47, LeMond_50, LindNT_45, Llorens_46, Lunahalos_46, MarkPhew_49, MeaningOfLife_47, Megsy_48, Murucutumbu_47, Mynx_47, Nibb_48, Oscar_50, Padfoot_46, Padpat_47, Peel_46, Piatt_46, Pokerus_45, Prithvi_47, QuincyRose_45, Ramen_46, Rapunzel97_46, Rosmarinus_46, SamuelLPlaqson_47, Scarlett_50, ShiaSurprise_47, Slimphazie_46, Spock_46, Stinson_47, Sulley_46, Tachez_46, TaiwanKao_48, TiniBug_47, Tiri_47, Topper_46, TreyKay_47, TruffulaTree_46, Twitch_46, Urkel_47, Veliki_46, YoureAdopted_45, Yuna_52, Zabiza_42, Zavala_47,

Genes that have the "Most Annotated" start but do not call it:

-

Genes that do not have the "Most Annotated" start:

- Marshawn_49, Shadow1_51,

Summary by start number:

Start 8:

- Found in 1 of 88 (1.1%) of genes in pham
- Manual Annotations of this start: 1 of 83
- Called 100.0% of time when present
- Phage (with cluster) where this start called: Marshawn_49 (K6),

Start 9:

- Found in 86 of 88 (97.7%) of genes in pham
- Manual Annotations of this start: 81 of 83
- Called 100.0% of time when present
- Phage (with cluster) where this start called: ActinUp_46 (K1), Adephagia_46 (K1), Adonis_46 (K1), Ageofdapage_48 (K1), AlishaPH_46 (K1), Angelica_46 (K1), Apocalypse_49 (K1), Asayake_46 (K1), Atiba_46 (K1), BEEST_46 (K1), BGIlluviae_46 (K1), BaghaKamala_45 (K1), BarrelRoll_46 (K1), Beezoo_48 (K1), Belladonna_46 (K1), Blizzard_46 (K1), Boiiii_46 (K1), CREW_46 (K1), Capricorn_46 (K1), CaseJules_47 (K1), CheetoDust_45 (K1), Chris_48 (K1), CrimD_46 (K1), Dalmuri_46 (K1), Deby_46 (K1), Devera_50 (K1), Dole_49 (K1), DrHayes_47 (K1), Durfee_46 (K1), Emerson_47 (K1), Ganymede_47 (K1), Geraldini_48 (K1), HedwigODU_46 (K1), Homura_46 (K1), Hyperbowlee_46 (K1), Illumine_49 (K1), Inky_46 (K1), JAWS_46 (K1), Jarvi_46 (K1), Jayhawk_47 (K1), Jeckyll_46 (K1), Joy99_46 (K1), KiSi_50 (K1), LaterM_47 (K1), LeMond_50 (K1), LindNT_45 (K1), Llorens_46 (K1), Lunahalos_46 (K1), MarkPhew_49 (K1), MeaningOfLife_47 (K1), Megsy_48 (K1), Murucutumbu_47 (K1), Mynx_47 (K1), Nibb_48 (K1), Oscar_50 (K1), Padfoot_46 (K1), Padpat_47 (K1), Peel_46 (K1), Piatt_46 (K1), Pokerus_45 (K1), Prithvi_47 (K1), QuincyRose_45 (K1), Ramen_46 (K1), Rapunzel97_46 (K1), Rosmarinus_46 (K1), SamuelLPlaqson_47 (K1), Scarlett_50 (K1), ShiaSurprise_47 (K1), Slimphazie_46 (K1), Spock_46 (K1), Stinson_47 (K1), Sulley_46 (K1), Tachez_46 (K1), TaiwanKao_48 (K1), TiniBug_47 (K1), Tiri_47 (K1), Topper_46 (K1),

TreyKay_47 (K1), TruffulaTree_46 (K1), Twitch_46 (K1), Urkel_47 (K1), Veliki_46 (K1), YoureAdopted_45 (K1), Yuna_52 (K6), Zabiza_42 (K1), Zavala_47 (K1),

Start 11:

- Found in 1 of 88 (1.1%) of genes in pham
- Manual Annotations of this start: 1 of 83
- Called 100.0% of time when present
- Phage (with cluster) where this start called: Shadow1_51 (K6),

Summary by clusters:

There are 2 clusters represented in this pham: K1, K6,

Info for manual annotations of cluster K1:

- Start number 9 was manually annotated 80 times for cluster K1.

Info for manual annotations of cluster K6:

- Start number 8 was manually annotated 1 time for cluster K6.
- Start number 9 was manually annotated 1 time for cluster K6.
- Start number 11 was manually annotated 1 time for cluster K6.

Gene Information:

Gene: ActinUp_46 Start: 35666, Stop: 36016, Start Num: 9

Candidate Starts for ActinUp_46:

(4, 35555), (Start: 9 @35666 has 81 MA's), (10, 35672), (13, 35702), (16, 35783), (19, 35942), (24, 35999),

Gene: Adephagia_46 Start: 35663, Stop: 36013, Start Num: 9

Candidate Starts for Adephagia_46:

(4, 35552), (Start: 9 @35663 has 81 MA's), (10, 35669), (19, 35939), (24, 35996),

Gene: Adonis_46 Start: 35961, Stop: 36311, Start Num: 9

Candidate Starts for Adonis_46:

(Start: 9 @35961 has 81 MA's), (13, 35997), (16, 36078), (19, 36237), (24, 36294),

Gene: Ageofdapage_48 Start: 36661, Stop: 37002, Start Num: 9

Candidate Starts for Ageofdapage_48:

(Start: 9 @36661 has 81 MA's), (10, 36667), (16, 36778), (20, 36940), (24, 36985),

Gene: AlishaPH_46 Start: 35936, Stop: 36286, Start Num: 9

Candidate Starts for AlishaPH_46:

(4, 35825), (Start: 9 @35936 has 81 MA's), (10, 35942), (13, 35972), (16, 36053), (19, 36212), (24, 36269),

Gene: Angelica_46 Start: 35893, Stop: 36243, Start Num: 9

Candidate Starts for Angelica_46:

(4, 35782), (Start: 9 @35893 has 81 MA's), (10, 35899), (13, 35929), (16, 36010), (19, 36169), (24, 36226),

Gene: Apocalypse_49 Start: 36678, Stop: 37022, Start Num: 9

Candidate Starts for Apocalypse_49:

(4, 36567), (Start: 9 @36678 has 81 MA's), (10, 36684), (13, 36714), (16, 36795), (19, 36954), (24, 37005),

Gene: Asayake_46 Start: 35978, Stop: 36328, Start Num: 9

Candidate Starts for Asayake_46:

(4, 35867), (Start: 9 @35978 has 81 MA's), (10, 35984), (19, 36254), (24, 36311),

Gene: Atiba_46 Start: 35626, Stop: 35976, Start Num: 9

Candidate Starts for Atiba_46:

(4, 35515), (Start: 9 @35626 has 81 MA's), (10, 35632), (13, 35662), (16, 35743), (19, 35902), (24, 35959),

Gene: BEEST_46 Start: 35978, Stop: 36328, Start Num: 9

Candidate Starts for BEEST_46:

(4, 35867), (Start: 9 @35978 has 81 MA's), (10, 35984), (19, 36254), (24, 36311),

Gene: BGlluviae_46 Start: 35781, Stop: 36131, Start Num: 9

Candidate Starts for BGlluviae_46:

(4, 35670), (Start: 9 @35781 has 81 MA's), (10, 35787), (19, 36057), (24, 36114),

Gene: BaghaKamala_45 Start: 35101, Stop: 35451, Start Num: 9

Candidate Starts for BaghaKamala_45:

(Start: 9 @35101 has 81 MA's), (10, 35107), (16, 35218), (19, 35377), (24, 35434),

Gene: BarrelRoll_46 Start: 35649, Stop: 35999, Start Num: 9

Candidate Starts for BarrelRoll_46:

(4, 35538), (Start: 9 @35649 has 81 MA's), (10, 35655), (13, 35685), (16, 35766), (19, 35925), (24, 35982),

Gene: Beezoo_48 Start: 36624, Stop: 36974, Start Num: 9

Candidate Starts for Beezoo_48:

(4, 36513), (Start: 9 @36624 has 81 MA's), (10, 36630), (13, 36660), (16, 36741), (19, 36900), (24, 36957),

Gene: Belladonna_46 Start: 35781, Stop: 36131, Start Num: 9

Candidate Starts for Belladonna_46:

(4, 35670), (Start: 9 @35781 has 81 MA's), (10, 35787), (19, 36057), (24, 36114),

Gene: Blizzard_46 Start: 35978, Stop: 36328, Start Num: 9

Candidate Starts for Blizzard_46:

(4, 35867), (Start: 9 @35978 has 81 MA's), (10, 35984), (19, 36254), (24, 36311),

Gene: Boiiii_46 Start: 35980, Stop: 36330, Start Num: 9

Candidate Starts for Boiiii_46:

(4, 35869), (Start: 9 @35980 has 81 MA's), (10, 35986), (19, 36256), (24, 36313),

Gene: CREW_46 Start: 35781, Stop: 36131, Start Num: 9

Candidate Starts for CREW_46:

(4, 35670), (Start: 9 @35781 has 81 MA's), (10, 35787), (19, 36057), (24, 36114),

Gene: Capricorn_46 Start: 35781, Stop: 36131, Start Num: 9

Candidate Starts for Capricorn_46:

(4, 35670), (Start: 9 @35781 has 81 MA's), (10, 35787), (19, 36057), (24, 36114),

Gene: CaseJules_47 Start: 35978, Stop: 36328, Start Num: 9

Candidate Starts for CaseJules_47:

(4, 35867), (Start: 9 @35978 has 81 MA's), (10, 35984), (19, 36254), (24, 36311),

Gene: CheetoDust_45 Start: 35150, Stop: 35500, Start Num: 9

Candidate Starts for CheetoDust_45:

(4, 35039), (Start: 9 @35150 has 81 MA's), (10, 35156), (13, 35186), (16, 35267), (19, 35426), (24, 35483),

Gene: Chris_48 Start: 36479, Stop: 36811, Start Num: 9

Candidate Starts for Chris_48:

(1, 36260), (Start: 9 @36479 has 81 MA's), (12, 36497), (14, 36557), (15, 36602),

Gene: CrimD_46 Start: 35904, Stop: 36242, Start Num: 9

Candidate Starts for CrimD_46:

(3, 35781), (4, 35793), (Start: 9 @35904 has 81 MA's), (10, 35910), (16, 36021), (24, 36225),

Gene: Dalmuri_46 Start: 35781, Stop: 36131, Start Num: 9

Candidate Starts for Dalmuri_46:

(4, 35670), (Start: 9 @35781 has 81 MA's), (10, 35787), (19, 36057), (24, 36114),

Gene: Deby_46 Start: 35909, Stop: 36259, Start Num: 9

Candidate Starts for Deby_46:

(4, 35798), (6, 35864), (Start: 9 @35909 has 81 MA's), (10, 35915), (13, 35945), (16, 36026), (19, 36185), (24, 36242),

Gene: Devera_50 Start: 36442, Stop: 36789, Start Num: 9

Candidate Starts for Devera_50:

(Start: 9 @36442 has 81 MA's), (10, 36448), (16, 36559), (19, 36718), (20, 36721), (24, 36772),

Gene: Dole_49 Start: 36444, Stop: 36791, Start Num: 9

Candidate Starts for Dole_49:

(Start: 9 @36444 has 81 MA's), (10, 36450), (16, 36561), (19, 36720), (20, 36723), (24, 36774),

Gene: DrHayes_47 Start: 36560, Stop: 36904, Start Num: 9

Candidate Starts for DrHayes_47:

(Start: 9 @36560 has 81 MA's), (10, 36566), (16, 36677), (20, 36836), (24, 36887),

Gene: Durfee_46 Start: 35978, Stop: 36328, Start Num: 9

Candidate Starts for Durfee_46:

(4, 35867), (Start: 9 @35978 has 81 MA's), (10, 35984), (19, 36254), (24, 36311),

Gene: Emerson_47 Start: 35657, Stop: 36007, Start Num: 9

Candidate Starts for Emerson_47:

(4, 35546), (Start: 9 @35657 has 81 MA's), (10, 35663), (13, 35693), (16, 35774), (19, 35933), (24, 35990),

Gene: Ganymede_47 Start: 36096, Stop: 36446, Start Num: 9

Candidate Starts for Ganymede_47:

(4, 35985), (Start: 9 @36096 has 81 MA's), (10, 36102), (13, 36132), (16, 36213), (19, 36372), (24, 36429),

Gene: Geraldini_48 Start: 36713, Stop: 37063, Start Num: 9

Candidate Starts for Geraldini_48:

(4, 36602), (Start: 9 @36713 has 81 MA's), (10, 36719), (13, 36749), (16, 36830), (19, 36989), (24, 37046),

Gene: HedwigODU_46 Start: 35666, Stop: 36016, Start Num: 9

Candidate Starts for HedwigODU_46:

(4, 35555), (Start: 9 @35666 has 81 MA's), (10, 35672), (13, 35702), (16, 35783), (19, 35942), (24, 35999),

Gene: Homura_46 Start: 35781, Stop: 36131, Start Num: 9

Candidate Starts for Homura_46:

(4, 35670), (Start: 9 @35781 has 81 MA's), (10, 35787), (19, 36057), (24, 36114),

Gene: Hyperbowlee_46 Start: 35978, Stop: 36328, Start Num: 9

Candidate Starts for Hyperbowlee_46:

(4, 35867), (Start: 9 @35978 has 81 MA's), (10, 35984), (19, 36254), (24, 36311),

Gene: Illumine_49 Start: 36444, Stop: 36791, Start Num: 9

Candidate Starts for Illumine_49:

(Start: 9 @36444 has 81 MA's), (10, 36450), (16, 36561), (19, 36720), (20, 36723), (24, 36774),

Gene: Inky_46 Start: 35781, Stop: 36131, Start Num: 9

Candidate Starts for Inky_46:

(4, 35670), (Start: 9 @35781 has 81 MA's), (10, 35787), (19, 36057), (24, 36114),

Gene: JAWS_46 Start: 35655, Stop: 36005, Start Num: 9

Candidate Starts for JAWS_46:

(4, 35544), (Start: 9 @35655 has 81 MA's), (10, 35661), (19, 35931), (24, 35988),

Gene: Jarvi_46 Start: 35781, Stop: 36131, Start Num: 9

Candidate Starts for Jarvi_46:

(4, 35670), (Start: 9 @35781 has 81 MA's), (10, 35787), (19, 36057), (24, 36114),

Gene: Jayhawk_47 Start: 35664, Stop: 36014, Start Num: 9

Candidate Starts for Jayhawk_47:

(4, 35553), (Start: 9 @35664 has 81 MA's), (10, 35670), (13, 35700), (16, 35781), (19, 35940), (24, 35997),

Gene: Jeckyll_46 Start: 35781, Stop: 36131, Start Num: 9

Candidate Starts for Jeckyll_46:

(4, 35670), (Start: 9 @35781 has 81 MA's), (10, 35787), (19, 36057), (24, 36114),

Gene: Joy99_46 Start: 35710, Stop: 36060, Start Num: 9

Candidate Starts for Joy99_46:

(4, 35599), (Start: 9 @35710 has 81 MA's), (10, 35716), (19, 35986), (24, 36043),

Gene: KiSi_50 Start: 36878, Stop: 37192, Start Num: 9

Candidate Starts for KiSi_50:

(1, 36665), (Start: 9 @36878 has 81 MA's), (18, 37133), (22, 37160),

Gene: LaterM_47 Start: 36558, Stop: 36899, Start Num: 9

Candidate Starts for LaterM_47:

(Start: 9 @36558 has 81 MA's), (10, 36564), (16, 36675), (20, 36837), (24, 36882),

Gene: LeMond_50 Start: 36862, Stop: 37176, Start Num: 9

Candidate Starts for LeMond_50:

(1, 36649), (Start: 9 @36862 has 81 MA's), (18, 37117), (22, 37144),

Gene: LindNT_45 Start: 35871, Stop: 36221, Start Num: 9

Candidate Starts for LindNT_45:

(Start: 9 @35871 has 81 MA's), (10, 35877), (16, 35988), (19, 36147), (24, 36204),

Gene: Llorens_46 Start: 35781, Stop: 36131, Start Num: 9

Candidate Starts for Llorens_46:

(4, 35670), (Start: 9 @35781 has 81 MA's), (10, 35787), (19, 36057), (24, 36114),

Gene: Lunahalos_46 Start: 35781, Stop: 36131, Start Num: 9

Candidate Starts for Lunahalos_46:

(4, 35670), (Start: 9 @35781 has 81 MA's), (10, 35787), (19, 36057),

Gene: MarkPhew_49 Start: 36307, Stop: 36639, Start Num: 9

Candidate Starts for MarkPhew_49:

(1, 36091), (Start: 9 @36307 has 81 MA's), (12, 36325),

Gene: Marshawn_49 Start: 36704, Stop: 36964, Start Num: 8

Candidate Starts for Marshawn_49:

(Start: 8 @36704 has 1 MA's), (16, 36812),

Gene: MeaningOfLife_47 Start: 36590, Stop: 36940, Start Num: 9

Candidate Starts for MeaningOfLife_47:

(4, 36479), (Start: 9 @36590 has 81 MA's), (10, 36596), (13, 36626), (16, 36707), (19, 36866), (24, 36923),

Gene: Megsy_48 Start: 35930, Stop: 36280, Start Num: 9

Candidate Starts for Megsy_48:

(Start: 9 @35930 has 81 MA's), (10, 35936), (16, 36047), (19, 36206), (24, 36263),

Gene: Murucutumbu_47 Start: 36651, Stop: 36992, Start Num: 9

Candidate Starts for Murucutumbu_47:

(Start: 9 @36651 has 81 MA's), (10, 36657), (16, 36768), (20, 36930), (21, 36945), (24, 36975),

Gene: Mynx_47 Start: 35982, Stop: 36332, Start Num: 9

Candidate Starts for Mynx_47:

(4, 35871), (Start: 9 @35982 has 81 MA's), (10, 35988), (13, 36018), (16, 36099), (19, 36258), (24, 36315),

Gene: Nibb_48 Start: 36019, Stop: 36333, Start Num: 9

Candidate Starts for Nibb_48:

(1, 35803), (7, 35989), (Start: 9 @36019 has 81 MA's),

Gene: Oscar_50 Start: 36764, Stop: 37078, Start Num: 9

Candidate Starts for Oscar_50:

(1, 36551), (Start: 9 @36764 has 81 MA's), (18, 37019), (22, 37046),

Gene: Padfoot_46 Start: 35978, Stop: 36328, Start Num: 9

Candidate Starts for Padfoot_46:

(4, 35867), (Start: 9 @35978 has 81 MA's), (10, 35984), (19, 36254), (24, 36311),

Gene: Padpat_47 Start: 35657, Stop: 36007, Start Num: 9

Candidate Starts for Padpat_47:

(4, 35546), (Start: 9 @35657 has 81 MA's), (10, 35663), (13, 35693), (16, 35774), (19, 35933), (24, 35990),

Gene: Peel_46 Start: 35783, Stop: 36133, Start Num: 9

Candidate Starts for Peel_46:

(4, 35672), (Start: 9 @35783 has 81 MA's), (10, 35789), (19, 36059), (24, 36116),

Gene: Piatt_46 Start: 35978, Stop: 36328, Start Num: 9

Candidate Starts for Piatt_46:

(4, 35867), (Start: 9 @35978 has 81 MA's), (10, 35984), (19, 36254), (24, 36311),

Gene: Pokerus_45 Start: 35704, Stop: 36054, Start Num: 9

Candidate Starts for Pokerus_45:

(4, 35593), (Start: 9 @35704 has 81 MA's), (10, 35710), (13, 35740), (16, 35821), (19, 35980), (24, 36037),

Gene: Prithvi_47 Start: 35871, Stop: 36221, Start Num: 9

Candidate Starts for Prithvi_47:

(Start: 9 @35871 has 81 MA's), (10, 35877), (16, 35988), (19, 36147), (24, 36204),

Gene: QuincyRose_45 Start: 36096, Stop: 36446, Start Num: 9

Candidate Starts for QuincyRose_45:

(4, 35985), (Start: 9 @36096 has 81 MA's), (10, 36102), (13, 36132), (16, 36213), (19, 36372), (24, 36429),

Gene: Ramen_46 Start: 35668, Stop: 36018, Start Num: 9

Candidate Starts for Ramen_46:

(4, 35557), (Start: 9 @35668 has 81 MA's), (10, 35674), (13, 35704), (16, 35785), (19, 35944), (24, 36001),

Gene: Rapunzel97_46 Start: 35664, Stop: 36014, Start Num: 9

Candidate Starts for Rapunzel97_46:

(4, 35553), (Start: 9 @35664 has 81 MA's), (10, 35670), (13, 35700), (16, 35781), (19, 35940), (24, 35997),

Gene: Rosmarinus_46 Start: 35769, Stop: 36119, Start Num: 9

Candidate Starts for Rosmarinus_46:

(4, 35658), (Start: 9 @35769 has 81 MA's), (10, 35775), (19, 36045), (24, 36102),

Gene: SamuelLPlaqson_47 Start: 36560, Stop: 36904, Start Num: 9

Candidate Starts for SamuelLPlaqson_47:

(Start: 9 @36560 has 81 MA's), (10, 36566), (16, 36677), (20, 36836), (24, 36887),

Gene: Scarlett_50 Start: 36756, Stop: 37070, Start Num: 9

Candidate Starts for Scarlett_50:

(1, 36543), (Start: 9 @36756 has 81 MA's), (18, 37011), (22, 37038),

Gene: Shadow1_51 Start: 36704, Stop: 36997, Start Num: 11

Candidate Starts for Shadow1_51:

(Start: 11 @36704 has 1 MA's), (17, 36938), (24, 36980),

Gene: ShiaSurprise_47 Start: 35978, Stop: 36328, Start Num: 9

Candidate Starts for ShiaSurprise_47:

(4, 35867), (Start: 9 @35978 has 81 MA's), (10, 35984), (19, 36254), (24, 36311),

Gene: Slimphazie_46 Start: 35664, Stop: 36014, Start Num: 9

Candidate Starts for Slimphazie_46:

(4, 35553), (Start: 9 @35664 has 81 MA's), (10, 35670), (13, 35700), (16, 35781), (19, 35940), (24, 35997),

Gene: Spock_46 Start: 35782, Stop: 36132, Start Num: 9

Candidate Starts for Spock_46:

(4, 35671), (Start: 9 @35782 has 81 MA's), (10, 35788), (19, 36058), (24, 36115),

Gene: Stinson_47 Start: 36171, Stop: 36512, Start Num: 9

Candidate Starts for Stinson_47:

(Start: 9 @36171 has 81 MA's), (10, 36177), (16, 36288), (20, 36450), (24, 36495),

Gene: Sulley_46 Start: 35908, Stop: 36258, Start Num: 9

Candidate Starts for Sulley_46:

(4, 35797), (6, 35863), (Start: 9 @35908 has 81 MA's), (10, 35914), (13, 35944), (16, 36025), (19, 36184), (24, 36241),

Gene: Tachez_46 Start: 35626, Stop: 35976, Start Num: 9

Candidate Starts for Tachez_46:

(4, 35515), (Start: 9 @35626 has 81 MA's), (10, 35632), (13, 35662), (16, 35743), (19, 35902), (24, 35959),

Gene: TaiwanKao_48 Start: 35927, Stop: 36277, Start Num: 9

Candidate Starts for TaiwanKao_48:

(4, 35792), (Start: 9 @35927 has 81 MA's), (10, 35933), (16, 36044), (19, 36203), (24, 36260),

Gene: TiniBug_47 Start: 36556, Stop: 36900, Start Num: 9

Candidate Starts for TiniBug_47:

(Start: 9 @36556 has 81 MA's), (10, 36562), (16, 36673), (20, 36832), (24, 36883),

Gene: Tiri_47 Start: 35956, Stop: 36306, Start Num: 9

Candidate Starts for Tiri_47:

(4, 35845), (Start: 9 @35956 has 81 MA's), (10, 35962), (16, 36073), (19, 36232), (24, 36289),

Gene: Topper_46 Start: 35781, Stop: 36131, Start Num: 9

Candidate Starts for Topper_46:

(4, 35670), (Start: 9 @35781 has 81 MA's), (10, 35787), (19, 36057),

Gene: TreyKay_47 Start: 35871, Stop: 36221, Start Num: 9

Candidate Starts for TreyKay_47:

(Start: 9 @35871 has 81 MA's), (10, 35877), (16, 35988), (19, 36147), (24, 36204),

Gene: TruffulaTree_46 Start: 35660, Stop: 36010, Start Num: 9

Candidate Starts for TruffulaTree_46:

(4, 35549), (Start: 9 @35660 has 81 MA's), (10, 35666), (13, 35696), (16, 35777), (19, 35936), (24, 35993),

Gene: Twitch_46 Start: 35783, Stop: 36133, Start Num: 9

Candidate Starts for Twitch_46:

(4, 35672), (Start: 9 @35783 has 81 MA's), (10, 35789), (19, 36059), (24, 36116),

Gene: Urkel_47 Start: 36560, Stop: 36904, Start Num: 9

Candidate Starts for Urkel_47:

(Start: 9 @36560 has 81 MA's), (10, 36566), (16, 36677), (20, 36836), (24, 36887),

Gene: Veliki_46 Start: 35700, Stop: 36050, Start Num: 9

Candidate Starts for Veliki_46:

(4, 35589), (Start: 9 @35700 has 81 MA's), (10, 35706), (13, 35736), (16, 35817), (19, 35976), (24, 36033),

Gene: YoureAdopted_45 Start: 35865, Stop: 36215, Start Num: 9

Candidate Starts for YoureAdopted_45:

(4, 35754), (Start: 9 @35865 has 81 MA's), (10, 35871), (13, 35901), (16, 35982), (19, 36141), (24, 36198),

Gene: Yuna_52 Start: 37415, Stop: 37738, Start Num: 9

Candidate Starts for Yuna_52:

(2, 37256), (5, 37292), (Start: 9 @37415 has 81 MA's), (16, 37526), (22, 37697), (23, 37703),

Gene: Zabiza_42 Start: 31971, Stop: 32321, Start Num: 9

Candidate Starts for Zabiza_42:

(4, 31860), (Start: 9 @31971 has 81 MA's), (10, 31977), (13, 32007), (16, 32088), (19, 32247), (24, 32304),

Gene: Zavala_47 Start: 35942, Stop: 36292, Start Num: 9

Candidate Starts for Zavala_47:

(4, 35831), (Start: 9 @35942 has 81 MA's), (10, 35948), (13, 35978), (16, 36059), (19, 36218), (24, 36275),