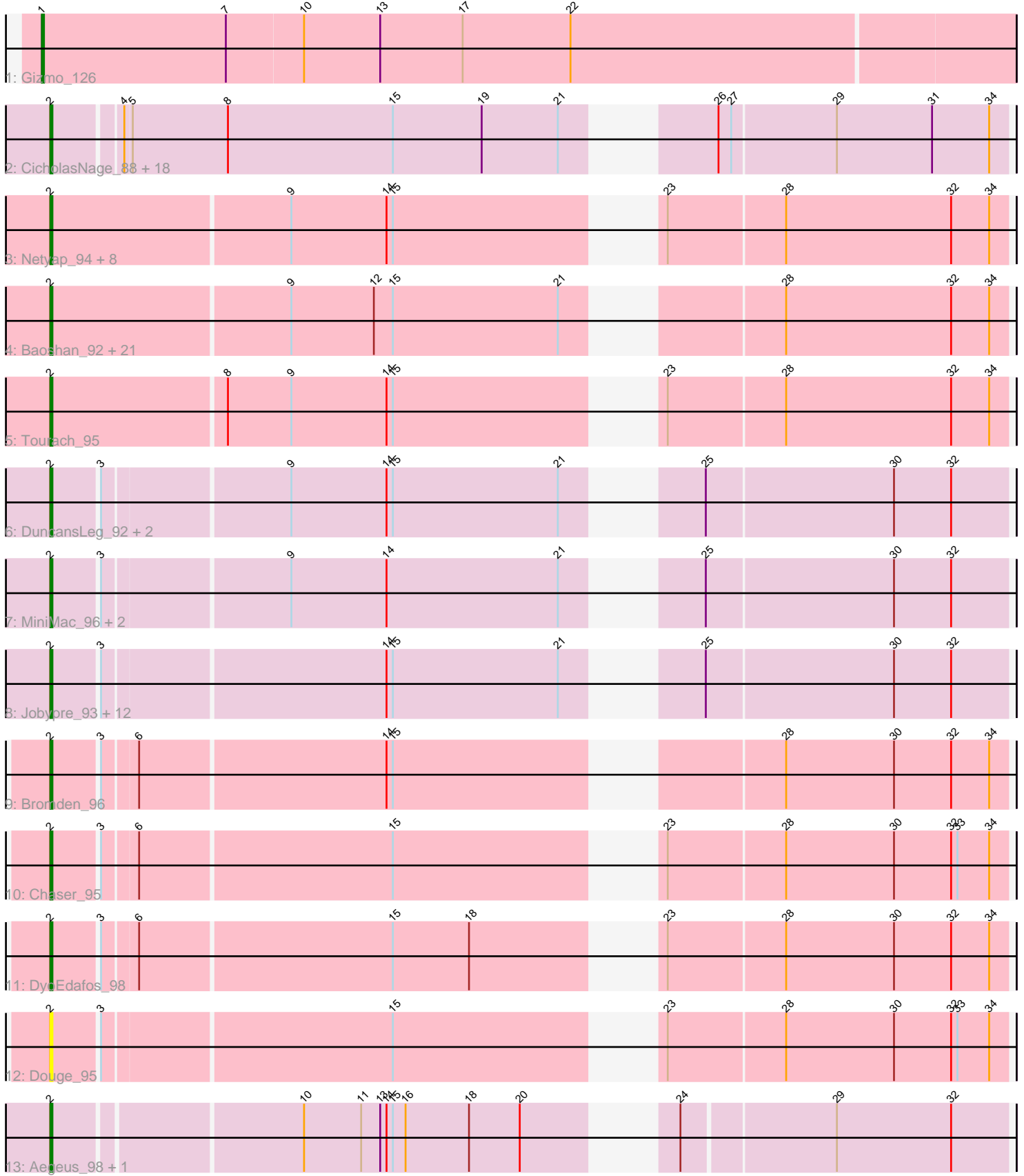


Pham 157817



Note: Tracks are now grouped by subcluster and scaled. Switching in subcluster is indicated by changes in track color. Track scale is now set by default to display the region 30 bp upstream of start 1 to 30 bp downstream of the last possible start. If this default region is judged to be packed too tightly with annotated starts, the track will be further scaled to only show that region of the ORF with annotated starts. This action will be indicated by adding "Zoomed" to the title. For starts, yellow indicates the location of called starts comprised solely of Glimmer/GeneMark auto-annotations, green indicates the location of called starts with at least 1 manual gene annotation.

Pham 157817 Report

This analysis was run 04/13/24 on database version 558.

Pham number 157817 has 77 members, 9 are drafts.

Phages represented in each track:

- Track 1 : Gizmo_126
- Track 2 : CicholasNage_88, JoeDirt_92, LeBron_90, UPIE_90, OhShagHennessy_87, Zaria_91, Halena_88, Calm_92, Silverleaf_90, AvadaKedavra_91, DirkDirk_88, MAckerman_87, Enceladus_88, Acquire49_91, Wamburgrxpress_90, Rose5_92, Tyson_92, Wyatt2_92, Appletree2_90
- Track 3 : Netyap_94, Gabriela_95, DrSeegs_94, Breezona_95, Wigglewiggles_95, Itos_95, Faith1_95, Winky_95, Miley16_95
- Track 4 : Baoshan_92, ZhongYanYuan_92, MkaliMitinis3_97, Loadrie_94, Kahlid_94, Lewan_96, BigCheese_95, Zakai_96, Hafay_96, Gardann_95, Nicholasp3_95, Rumpelstiltskin_91, Claus_94, LilDestine_93, Finemlucis_96, Wilder_96, Vetrix_93, GuuelaD_92, Crossroads_95, BobsGarage_94, Bazzle_92, Archie_92
- Track 5 : Tourach_95
- Track 6 : DuncansLeg_92, Ellson_91, Krypton555_94
- Track 7 : MiniMac_96, MiniLon_96, Lolly9_91
- Track 8 : Jobypre_93, Moostard_89, Jubie_91, Snenia_91, Bellis_90, Kingsolomon_90, Finnry_92, Samty_91, Clautastrophe_90, Nicholas_90, Lumos_92, MsGreen_92, Whirlwind_93
- Track 9 : Bromden_96
- Track 10 : Chaser_95
- Track 11 : DyoEdafos_98
- Track 12 : Douge_95
- Track 13 : Aegeus_98, Baudelaire_98

Summary of Final Annotations (See graph section above for start numbers):

The start number called the most often in the published annotations is 2, it was called in 67 of the 68 non-draft genes in the pham.

Genes that call this "Most Annotated" start:

- Acquire49_91, Aegeus_98, Appletree2_90, Archie_92, AvadaKedavra_91, Baoshan_92, Baudelaire_98, Bazzle_92, Bellis_90, BigCheese_95, BobsGarage_94, Breezona_95, Bromden_96, Calm_92, Chaser_95, CicholasNage_88, Claus_94, Clautastrophe_90, Crossroads_95, DirkDirk_88, Douge_95, DrSeegs_94,

DuncansLeg_92, DyoEdafos_98, Ellson_91, Enceladus_88, Faith1_95, Finemlucis_96, Finnry_92, Gabriela_95, Gardann_95, GuuelaD_92, Hafay_96, Halena_88, Itos_95, Jobypre_93, JoeDirt_92, Jubie_91, Kahlid_94, Kingsolomon_90, Krypton555_94, LeBron_90, Lewan_96, LilDestine_93, Loadrie_94, Lolly9_91, Lumos_92, MAckerman_87, Miley16_95, MiniLon_96, MiniMac_96, MkaliMitinis3_97, Moostard_89, MsGreen_92, Netyap_94, Nicholas_90, Nicholasp3_95, OhShagHennessy_87, Rose5_92, Rumpelstiltskin_91, Samty_91, Silverleaf_90, Snenia_91, Tourach_95, Tyson_92, UPIE_90, Vetrix_93, Wamburggrxpress_90, Whirlwind_93, Wigglewiggles_95, Wilder_96, Winky_95, Wyatt2_92, Zakai_96, Zaria_91, ZhongYanYuan_92,

Genes that have the "Most Annotated" start but do not call it:

-

Genes that do not have the "Most Annotated" start:

- Gizmo_126,

Summary by start number:

Start 1:

- Found in 1 of 77 (1.3%) of genes in pham
- Manual Annotations of this start: 1 of 68
- Called 100.0% of time when present
- Phage (with cluster) where this start called: Gizmo_126 (C1),

Start 2:

- Found in 76 of 77 (98.7%) of genes in pham
- Manual Annotations of this start: 67 of 68
- Called 100.0% of time when present
- Phage (with cluster) where this start called: Acquire49_91 (L1), Aegeus_98 (L5), Appletree2_90 (L1), Archie_92 (L2), AvadaKedavra_91 (L1), Baoshan_92 (L2), Baudelaire_98 (L5), Bazzle_92 (L2), Bellis_90 (L3), BigCheese_95 (L2), BobsGarage_94 (L2), Breezona_95 (L2), Bromden_96 (L4), Calm_92 (L1), Chaser_95 (L4), CicholasNage_88 (L1), Claus_94 (L2), Clautastrophe_90 (L3), Crossroads_95 (L2), DirkDirk_88 (L1), Douge_95 (L4), DrSeegs_94 (L2), DuncansLeg_92 (L3), DyoEdafos_98 (L4), Ellson_91 (L3), Enceladus_88 (L1), Faith1_95 (L2), Finemlucis_96 (L2), Finnry_92 (L3), Gabriela_95 (L2), Gardann_95 (L2), GuuelaD_92 (L2), Hafay_96 (L2), Halena_88 (L1), Itos_95 (L2), Jobypre_93 (L3), JoeDirt_92 (L1), Jubie_91 (L3), Kahlid_94 (L2), Kingsolomon_90 (L3), Krypton555_94 (L3), LeBron_90 (L1), Lewan_96 (L2), LilDestine_93 (L2), Loadrie_94 (L2), Lolly9_91 (L3), Lumos_92 (L3), MAckerman_87 (L1), Miley16_95 (L2), MiniLon_96 (L3), MiniMac_96 (L3), MkaliMitinis3_97 (L2), Moostard_89 (L3), MsGreen_92 (L3), Netyap_94 (L2), Nicholas_90 (L3), Nicholasp3_95 (L2), OhShagHennessy_87 (L1), Rose5_92 (L1), Rumpelstiltskin_91 (L2), Samty_91 (L3), Silverleaf_90 (L1), Snenia_91 (L3), Tourach_95 (L2), Tyson_92 (L1), UPIE_90 (L1), Vetrix_93 (L2), Wamburggrxpress_90 (L1), Whirlwind_93 (L3), Wigglewiggles_95 (L2), Wilder_96 (L2), Winky_95 (L2), Wyatt2_92 (L1), Zakai_96 (L2), Zaria_91 (L1), ZhongYanYuan_92 (L2),

Summary by clusters:

There are 6 clusters represented in this pham: L4, L5, L2, L3, L1, C1,

Info for manual annotations of cluster C1:

- Start number 1 was manually annotated 1 time for cluster C1.

Info for manual annotations of cluster L1:

- Start number 2 was manually annotated 18 times for cluster L1.

Info for manual annotations of cluster L2:

- Start number 2 was manually annotated 28 times for cluster L2.

Info for manual annotations of cluster L3:

- Start number 2 was manually annotated 16 times for cluster L3.

Info for manual annotations of cluster L4:

- Start number 2 was manually annotated 3 times for cluster L4.

Info for manual annotations of cluster L5:

- Start number 2 was manually annotated 2 times for cluster L5.

Gene Information:

Gene: Acquire49_91 Start: 57365, Stop: 57775, Start Num: 2

Candidate Starts for Acquire49_91:

(Start: 2 @57365 has 67 MA's), (4, 57395), (5, 57398), (8, 57443), (15, 57521), (19, 57563), (21, 57599), (26, 57641), (27, 57647), (29, 57695), (31, 57740), (34, 57767),

Gene: Aegeus_98 Start: 59877, Stop: 60281, Start Num: 2

Candidate Starts for Aegeus_98:

(Start: 2 @59877 has 67 MA's), (10, 59988), (11, 60015), (13, 60024), (14, 60027), (15, 60030), (16, 60036), (18, 60066), (20, 60090), (24, 60132), (29, 60201), (32, 60255),

Gene: Appletree2_90 Start: 57125, Stop: 57535, Start Num: 2

Candidate Starts for Appletree2_90:

(Start: 2 @57125 has 67 MA's), (4, 57155), (5, 57158), (8, 57203), (15, 57281), (19, 57323), (21, 57359), (26, 57401), (27, 57407), (29, 57455), (31, 57500), (34, 57527),

Gene: Archie_92 Start: 59049, Stop: 59462, Start Num: 2

Candidate Starts for Archie_92:

(Start: 2 @59049 has 67 MA's), (9, 59160), (12, 59199), (15, 59208), (21, 59286), (28, 59358), (32, 59436), (34, 59454),

Gene: AvadaKedavra_91 Start: 57477, Stop: 57887, Start Num: 2

Candidate Starts for AvadaKedavra_91:

(Start: 2 @57477 has 67 MA's), (4, 57507), (5, 57510), (8, 57555), (15, 57633), (19, 57675), (21, 57711), (26, 57753), (27, 57759), (29, 57807), (31, 57852), (34, 57879),

Gene: Baoshan_92 Start: 59704, Stop: 60117, Start Num: 2

Candidate Starts for Baoshan_92:

(Start: 2 @59704 has 67 MA's), (9, 59815), (12, 59854), (15, 59863), (21, 59941), (28, 60013), (32, 60091), (34, 60109),

Gene: Baudelaire_98 Start: 59877, Stop: 60281, Start Num: 2

Candidate Starts for Baudelaire_98:

(Start: 2 @59877 has 67 MA's), (10, 59988), (11, 60015), (13, 60024), (14, 60027), (15, 60030), (16, 60036), (18, 60066), (20, 60090), (24, 60132), (29, 60201), (32, 60255),

Gene: Bazzle_92 Start: 59605, Stop: 60018, Start Num: 2

Candidate Starts for Bazzle_92:

(Start: 2 @59605 has 67 MA's), (9, 59716), (12, 59755), (15, 59764), (21, 59842), (28, 59914), (32, 59992), (34, 60010),

Gene: Bellis_90 Start: 59240, Stop: 59647, Start Num: 2

Candidate Starts for Bellis_90:

(Start: 2 @59240 has 67 MA's), (3, 59261), (14, 59390), (15, 59393), (21, 59471), (25, 59507), (30, 59594), (32, 59621),

Gene: BigCheese_95 Start: 59815, Stop: 60228, Start Num: 2

Candidate Starts for BigCheese_95:

(Start: 2 @59815 has 67 MA's), (9, 59926), (12, 59965), (15, 59974), (21, 60052), (28, 60124), (32, 60202), (34, 60220),

Gene: BobsGarage_94 Start: 59815, Stop: 60228, Start Num: 2

Candidate Starts for BobsGarage_94:

(Start: 2 @59815 has 67 MA's), (9, 59926), (12, 59965), (15, 59974), (21, 60052), (28, 60124), (32, 60202), (34, 60220),

Gene: Breezona_95 Start: 59815, Stop: 60228, Start Num: 2

Candidate Starts for Breezona_95:

(Start: 2 @59815 has 67 MA's), (9, 59926), (14, 59971), (15, 59974), (23, 60070), (28, 60124), (32, 60202), (34, 60220),

Gene: Bromden_96 Start: 60413, Stop: 60820, Start Num: 2

Candidate Starts for Bromden_96:

(Start: 2 @60413 has 67 MA's), (3, 60434), (6, 60449), (14, 60563), (15, 60566), (28, 60716), (30, 60767), (32, 60794), (34, 60812),

Gene: Calm_92 Start: 57376, Stop: 57786, Start Num: 2

Candidate Starts for Calm_92:

(Start: 2 @57376 has 67 MA's), (4, 57406), (5, 57409), (8, 57454), (15, 57532), (19, 57574), (21, 57610), (26, 57652), (27, 57658), (29, 57706), (31, 57751), (34, 57778),

Gene: Chaser_95 Start: 58821, Stop: 59228, Start Num: 2

Candidate Starts for Chaser_95:

(Start: 2 @58821 has 67 MA's), (3, 58842), (6, 58857), (15, 58974), (23, 59070), (28, 59124), (30, 59175), (32, 59202), (33, 59205), (34, 59220),

Gene: CicholasNage_88 Start: 57029, Stop: 57439, Start Num: 2

Candidate Starts for CicholasNage_88:

(Start: 2 @57029 has 67 MA's), (4, 57059), (5, 57062), (8, 57107), (15, 57185), (19, 57227), (21, 57263), (26, 57305), (27, 57311), (29, 57359), (31, 57404), (34, 57431),

Gene: Claus_94 Start: 59528, Stop: 59941, Start Num: 2

Candidate Starts for Claus_94:

(Start: 2 @59528 has 67 MA's), (9, 59639), (12, 59678), (15, 59687), (21, 59765), (28, 59837), (32, 59915), (34, 59933),

Gene: Clautastrophe_90 Start: 59235, Stop: 59642, Start Num: 2
Candidate Starts for Clautastrophe_90:
(Start: 2 @59235 has 67 MA's), (3, 59256), (14, 59385), (15, 59388), (21, 59466), (25, 59502), (30, 59589), (32, 59616),

Gene: Crossroads_95 Start: 59527, Stop: 59940, Start Num: 2
Candidate Starts for Crossroads_95:
(Start: 2 @59527 has 67 MA's), (9, 59638), (12, 59677), (15, 59686), (21, 59764), (28, 59836), (32, 59914), (34, 59932),

Gene: DirkDirk_88 Start: 56705, Stop: 57115, Start Num: 2
Candidate Starts for DirkDirk_88:
(Start: 2 @56705 has 67 MA's), (4, 56735), (5, 56738), (8, 56783), (15, 56861), (19, 56903), (21, 56939), (26, 56981), (27, 56987), (29, 57035), (31, 57080), (34, 57107),

Gene: Douge_95 Start: 58940, Stop: 59347, Start Num: 2
Candidate Starts for Douge_95:
(Start: 2 @58940 has 67 MA's), (3, 58961), (15, 59093), (23, 59189), (28, 59243), (30, 59294), (32, 59321), (33, 59324), (34, 59339),

Gene: DrSeegs_94 Start: 59815, Stop: 60228, Start Num: 2
Candidate Starts for DrSeegs_94:
(Start: 2 @59815 has 67 MA's), (9, 59926), (14, 59971), (15, 59974), (23, 60070), (28, 60124), (32, 60202), (34, 60220),

Gene: DuncansLeg_92 Start: 59254, Stop: 59661, Start Num: 2
Candidate Starts for DuncansLeg_92:
(Start: 2 @59254 has 67 MA's), (3, 59275), (9, 59359), (14, 59404), (15, 59407), (21, 59485), (25, 59521), (30, 59608), (32, 59635),

Gene: DyoEdafos_98 Start: 59531, Stop: 59938, Start Num: 2
Candidate Starts for DyoEdafos_98:
(Start: 2 @59531 has 67 MA's), (3, 59552), (6, 59567), (15, 59684), (18, 59720), (23, 59780), (28, 59834), (30, 59885), (32, 59912), (34, 59930),

Gene: Ellson_91 Start: 59569, Stop: 59976, Start Num: 2
Candidate Starts for Ellson_91:
(Start: 2 @59569 has 67 MA's), (3, 59590), (9, 59674), (14, 59719), (15, 59722), (21, 59800), (25, 59836), (30, 59923), (32, 59950),

Gene: Enceladus_88 Start: 57406, Stop: 57816, Start Num: 2
Candidate Starts for Enceladus_88:
(Start: 2 @57406 has 67 MA's), (4, 57436), (5, 57439), (8, 57484), (15, 57562), (19, 57604), (21, 57640), (26, 57682), (27, 57688), (29, 57736), (31, 57781), (34, 57808),

Gene: Faith1_95 Start: 59452, Stop: 59865, Start Num: 2
Candidate Starts for Faith1_95:
(Start: 2 @59452 has 67 MA's), (9, 59563), (14, 59608), (15, 59611), (23, 59707), (28, 59761), (32, 59839), (34, 59857),

Gene: Finemlucis_96 Start: 60566, Stop: 60979, Start Num: 2
Candidate Starts for Finemlucis_96:

(Start: 2 @60566 has 67 MA's), (9, 60677), (12, 60716), (15, 60725), (21, 60803), (28, 60875), (32, 60953), (34, 60971),

Gene: Finnry_92 Start: 59588, Stop: 59995, Start Num: 2

Candidate Starts for Finnry_92:

(Start: 2 @59588 has 67 MA's), (3, 59609), (14, 59738), (15, 59741), (21, 59819), (25, 59855), (30, 59942), (32, 59969),

Gene: Gabriela_95 Start: 58798, Stop: 59211, Start Num: 2

Candidate Starts for Gabriela_95:

(Start: 2 @58798 has 67 MA's), (9, 58909), (14, 58954), (15, 58957), (23, 59053), (28, 59107), (32, 59185), (34, 59203),

Gene: Gardann_95 Start: 59299, Stop: 59712, Start Num: 2

Candidate Starts for Gardann_95:

(Start: 2 @59299 has 67 MA's), (9, 59410), (12, 59449), (15, 59458), (21, 59536), (28, 59608), (32, 59686), (34, 59704),

Gene: Gizmo_126 Start: 66298, Stop: 65843, Start Num: 1

Candidate Starts for Gizmo_126:

(Start: 1 @66298 has 1 MA's), (7, 66211), (10, 66175), (13, 66139), (17, 66100), (22, 66049),

Gene: GuuelaD_92 Start: 59411, Stop: 59824, Start Num: 2

Candidate Starts for GuuelaD_92:

(Start: 2 @59411 has 67 MA's), (9, 59522), (12, 59561), (15, 59570), (21, 59648), (28, 59720), (32, 59798), (34, 59816),

Gene: Hafay_96 Start: 59523, Stop: 59936, Start Num: 2

Candidate Starts for Hafay_96:

(Start: 2 @59523 has 67 MA's), (9, 59634), (12, 59673), (15, 59682), (21, 59760), (28, 59832), (32, 59910), (34, 59928),

Gene: Halena_88 Start: 56292, Stop: 56702, Start Num: 2

Candidate Starts for Halena_88:

(Start: 2 @56292 has 67 MA's), (4, 56322), (5, 56325), (8, 56370), (15, 56448), (19, 56490), (21, 56526), (26, 56568), (27, 56574), (29, 56622), (31, 56667), (34, 56694),

Gene: Itos_95 Start: 58358, Stop: 58771, Start Num: 2

Candidate Starts for Itos_95:

(Start: 2 @58358 has 67 MA's), (9, 58469), (14, 58514), (15, 58517), (23, 58613), (28, 58667), (32, 58745), (34, 58763),

Gene: Jobypre_93 Start: 59235, Stop: 59642, Start Num: 2

Candidate Starts for Jobypre_93:

(Start: 2 @59235 has 67 MA's), (3, 59256), (14, 59385), (15, 59388), (21, 59466), (25, 59502), (30, 59589), (32, 59616),

Gene: JoeDirt_92 Start: 57967, Stop: 58377, Start Num: 2

Candidate Starts for JoeDirt_92:

(Start: 2 @57967 has 67 MA's), (4, 57997), (5, 58000), (8, 58045), (15, 58123), (19, 58165), (21, 58201), (26, 58243), (27, 58249), (29, 58297), (31, 58342), (34, 58369),

Gene: Jubie_91 Start: 59370, Stop: 59777, Start Num: 2

Candidate Starts for Jubie_91:

(Start: 2 @59370 has 67 MA's), (3, 59391), (14, 59520), (15, 59523), (21, 59601), (25, 59637), (30, 59724), (32, 59751),

Gene: Kahlid_94 Start: 59217, Stop: 59630, Start Num: 2

Candidate Starts for Kahlid_94:

(Start: 2 @59217 has 67 MA's), (9, 59328), (12, 59367), (15, 59376), (21, 59454), (28, 59526), (32, 59604), (34, 59622),

Gene: Kingsolomon_90 Start: 59344, Stop: 59751, Start Num: 2

Candidate Starts for Kingsolomon_90:

(Start: 2 @59344 has 67 MA's), (3, 59365), (14, 59494), (15, 59497), (21, 59575), (25, 59611), (30, 59698), (32, 59725),

Gene: Krypton555_94 Start: 59747, Stop: 60154, Start Num: 2

Candidate Starts for Krypton555_94:

(Start: 2 @59747 has 67 MA's), (3, 59768), (9, 59852), (14, 59897), (15, 59900), (21, 59978), (25, 60014), (30, 60101), (32, 60128),

Gene: LeBron_90 Start: 56599, Stop: 57009, Start Num: 2

Candidate Starts for LeBron_90:

(Start: 2 @56599 has 67 MA's), (4, 56629), (5, 56632), (8, 56677), (15, 56755), (19, 56797), (21, 56833), (26, 56875), (27, 56881), (29, 56929), (31, 56974), (34, 57001),

Gene: Lewan_96 Start: 59451, Stop: 59864, Start Num: 2

Candidate Starts for Lewan_96:

(Start: 2 @59451 has 67 MA's), (9, 59562), (12, 59601), (15, 59610), (21, 59688), (28, 59760), (32, 59838), (34, 59856),

Gene: LilDestine_93 Start: 59128, Stop: 59541, Start Num: 2

Candidate Starts for LilDestine_93:

(Start: 2 @59128 has 67 MA's), (9, 59239), (12, 59278), (15, 59287), (21, 59365), (28, 59437), (32, 59515), (34, 59533),

Gene: Loadrie_94 Start: 59619, Stop: 60032, Start Num: 2

Candidate Starts for Loadrie_94:

(Start: 2 @59619 has 67 MA's), (9, 59730), (12, 59769), (15, 59778), (21, 59856), (28, 59928), (32, 60006), (34, 60024),

Gene: Lolly9_91 Start: 59420, Stop: 59827, Start Num: 2

Candidate Starts for Lolly9_91:

(Start: 2 @59420 has 67 MA's), (3, 59441), (9, 59525), (14, 59570), (21, 59651), (25, 59687), (30, 59774), (32, 59801),

Gene: Lumos_92 Start: 59232, Stop: 59639, Start Num: 2

Candidate Starts for Lumos_92:

(Start: 2 @59232 has 67 MA's), (3, 59253), (14, 59382), (15, 59385), (21, 59463), (25, 59499), (30, 59586), (32, 59613),

Gene: MAckerman_87 Start: 56285, Stop: 56695, Start Num: 2

Candidate Starts for MAckerman_87:

(Start: 2 @56285 has 67 MA's), (4, 56315), (5, 56318), (8, 56363), (15, 56441), (19, 56483), (21, 56519), (26, 56561), (27, 56567), (29, 56615), (31, 56660), (34, 56687),

Gene: Miley16_95 Start: 59815, Stop: 60228, Start Num: 2

Candidate Starts for Miley16_95:

(Start: 2 @59815 has 67 MA's), (9, 59926), (14, 59971), (15, 59974), (23, 60070), (28, 60124), (32, 60202), (34, 60220),

Gene: MiniLon_96 Start: 59421, Stop: 59828, Start Num: 2

Candidate Starts for MiniLon_96:

(Start: 2 @59421 has 67 MA's), (3, 59442), (9, 59526), (14, 59571), (21, 59652), (25, 59688), (30, 59775), (32, 59802),

Gene: MiniMac_96 Start: 59416, Stop: 59823, Start Num: 2

Candidate Starts for MiniMac_96:

(Start: 2 @59416 has 67 MA's), (3, 59437), (9, 59521), (14, 59566), (21, 59647), (25, 59683), (30, 59770), (32, 59797),

Gene: MkaliMitinis3_97 Start: 59582, Stop: 59995, Start Num: 2

Candidate Starts for MkaliMitinis3_97:

(Start: 2 @59582 has 67 MA's), (9, 59693), (12, 59732), (15, 59741), (21, 59819), (28, 59891), (32, 59969), (34, 59987),

Gene: Moostard_89 Start: 59339, Stop: 59746, Start Num: 2

Candidate Starts for Moostard_89:

(Start: 2 @59339 has 67 MA's), (3, 59360), (14, 59489), (15, 59492), (21, 59570), (25, 59606), (30, 59693), (32, 59720),

Gene: MsGreen_92 Start: 59234, Stop: 59641, Start Num: 2

Candidate Starts for MsGreen_92:

(Start: 2 @59234 has 67 MA's), (3, 59255), (14, 59384), (15, 59387), (21, 59465), (25, 59501), (30, 59588), (32, 59615),

Gene: Netyap_94 Start: 59453, Stop: 59866, Start Num: 2

Candidate Starts for Netyap_94:

(Start: 2 @59453 has 67 MA's), (9, 59564), (14, 59609), (15, 59612), (23, 59708), (28, 59762), (32, 59840), (34, 59858),

Gene: Nicholas_90 Start: 59344, Stop: 59751, Start Num: 2

Candidate Starts for Nicholas_90:

(Start: 2 @59344 has 67 MA's), (3, 59365), (14, 59494), (15, 59497), (21, 59575), (25, 59611), (30, 59698), (32, 59725),

Gene: Nicholasp3_95 Start: 59299, Stop: 59712, Start Num: 2

Candidate Starts for Nicholasp3_95:

(Start: 2 @59299 has 67 MA's), (9, 59410), (12, 59449), (15, 59458), (21, 59536), (28, 59608), (32, 59686), (34, 59704),

Gene: OhShagHennessy_87 Start: 56542, Stop: 56952, Start Num: 2

Candidate Starts for OhShagHennessy_87:

(Start: 2 @56542 has 67 MA's), (4, 56572), (5, 56575), (8, 56620), (15, 56698), (19, 56740), (21, 56776), (26, 56818), (27, 56824), (29, 56872), (31, 56917), (34, 56944),

Gene: Rose5_92 Start: 57809, Stop: 58219, Start Num: 2

Candidate Starts for Rose5_92:

(Start: 2 @57809 has 67 MA's), (4, 57839), (5, 57842), (8, 57887), (15, 57965), (19, 58007), (21, 58043), (26, 58085), (27, 58091), (29, 58139), (31, 58184), (34, 58211),

Gene: Rumpelstiltskin_91 Start: 59092, Stop: 59505, Start Num: 2

Candidate Starts for Rumpelstiltskin_91:

(Start: 2 @59092 has 67 MA's), (9, 59203), (12, 59242), (15, 59251), (21, 59329), (28, 59401), (32, 59479), (34, 59497),

Gene: Samty_91 Start: 59332, Stop: 59739, Start Num: 2

Candidate Starts for Samty_91:

(Start: 2 @59332 has 67 MA's), (3, 59353), (14, 59482), (15, 59485), (21, 59563), (25, 59599), (30, 59686), (32, 59713),

Gene: Silverleaf_90 Start: 57305, Stop: 57715, Start Num: 2

Candidate Starts for Silverleaf_90:

(Start: 2 @57305 has 67 MA's), (4, 57335), (5, 57338), (8, 57383), (15, 57461), (19, 57503), (21, 57539), (26, 57581), (27, 57587), (29, 57635), (31, 57680), (34, 57707),

Gene: Snenia_91 Start: 59236, Stop: 59643, Start Num: 2

Candidate Starts for Snenia_91:

(Start: 2 @59236 has 67 MA's), (3, 59257), (14, 59386), (15, 59389), (21, 59467), (25, 59503), (30, 59590), (32, 59617),

Gene: Tourach_95 Start: 60189, Stop: 60602, Start Num: 2

Candidate Starts for Tourach_95:

(Start: 2 @60189 has 67 MA's), (8, 60270), (9, 60300), (14, 60345), (15, 60348), (23, 60444), (28, 60498), (32, 60576), (34, 60594),

Gene: Tyson_92 Start: 57702, Stop: 58112, Start Num: 2

Candidate Starts for Tyson_92:

(Start: 2 @57702 has 67 MA's), (4, 57732), (5, 57735), (8, 57780), (15, 57858), (19, 57900), (21, 57936), (26, 57978), (27, 57984), (29, 58032), (31, 58077), (34, 58104),

Gene: UPIE_90 Start: 57298, Stop: 57708, Start Num: 2

Candidate Starts for UPIE_90:

(Start: 2 @57298 has 67 MA's), (4, 57328), (5, 57331), (8, 57376), (15, 57454), (19, 57496), (21, 57532), (26, 57574), (27, 57580), (29, 57628), (31, 57673), (34, 57700),

Gene: Vetrix_93 Start: 59073, Stop: 59486, Start Num: 2

Candidate Starts for Vetrix_93:

(Start: 2 @59073 has 67 MA's), (9, 59184), (12, 59223), (15, 59232), (21, 59310), (28, 59382), (32, 59460), (34, 59478),

Gene: Wamburgxpress_90 Start: 57426, Stop: 57836, Start Num: 2

Candidate Starts for Wamburgxpress_90:

(Start: 2 @57426 has 67 MA's), (4, 57456), (5, 57459), (8, 57504), (15, 57582), (19, 57624), (21, 57660), (26, 57702), (27, 57708), (29, 57756), (31, 57801), (34, 57828),

Gene: Whirlwind_93 Start: 59575, Stop: 59982, Start Num: 2

Candidate Starts for Whirlwind_93:

(Start: 2 @59575 has 67 MA's), (3, 59596), (14, 59725), (15, 59728), (21, 59806), (25, 59842), (30, 59929), (32, 59956),

Gene: Wigglewigggle_95 Start: 59375, Stop: 59788, Start Num: 2

Candidate Starts for Wigglewigggle_95:

(Start: 2 @59375 has 67 MA's), (9, 59486), (14, 59531), (15, 59534), (23, 59630), (28, 59684), (32, 59762), (34, 59780),

Gene: Wilder_96 Start: 59217, Stop: 59630, Start Num: 2

Candidate Starts for Wilder_96:

(Start: 2 @59217 has 67 MA's), (9, 59328), (12, 59367), (15, 59376), (21, 59454), (28, 59526), (32, 59604), (34, 59622),

Gene: Winky_95 Start: 59815, Stop: 60228, Start Num: 2

Candidate Starts for Winky_95:

(Start: 2 @59815 has 67 MA's), (9, 59926), (14, 59971), (15, 59974), (23, 60070), (28, 60124), (32, 60202), (34, 60220),

Gene: Wyatt2_92 Start: 57733, Stop: 58143, Start Num: 2

Candidate Starts for Wyatt2_92:

(Start: 2 @57733 has 67 MA's), (4, 57763), (5, 57766), (8, 57811), (15, 57889), (19, 57931), (21, 57967), (26, 58009), (27, 58015), (29, 58063), (31, 58108), (34, 58135),

Gene: Zakai_96 Start: 59860, Stop: 60273, Start Num: 2

Candidate Starts for Zakai_96:

(Start: 2 @59860 has 67 MA's), (9, 59971), (12, 60010), (15, 60019), (21, 60097), (28, 60169), (32, 60247), (34, 60265),

Gene: Zaria_91 Start: 56841, Stop: 57251, Start Num: 2

Candidate Starts for Zaria_91:

(Start: 2 @56841 has 67 MA's), (4, 56871), (5, 56874), (8, 56919), (15, 56997), (19, 57039), (21, 57075), (26, 57117), (27, 57123), (29, 57171), (31, 57216), (34, 57243),

Gene: ZhongYanYuan_92 Start: 59271, Stop: 59684, Start Num: 2

Candidate Starts for ZhongYanYuan_92:

(Start: 2 @59271 has 67 MA's), (9, 59382), (12, 59421), (15, 59430), (21, 59508), (28, 59580), (32, 59658), (34, 59676),