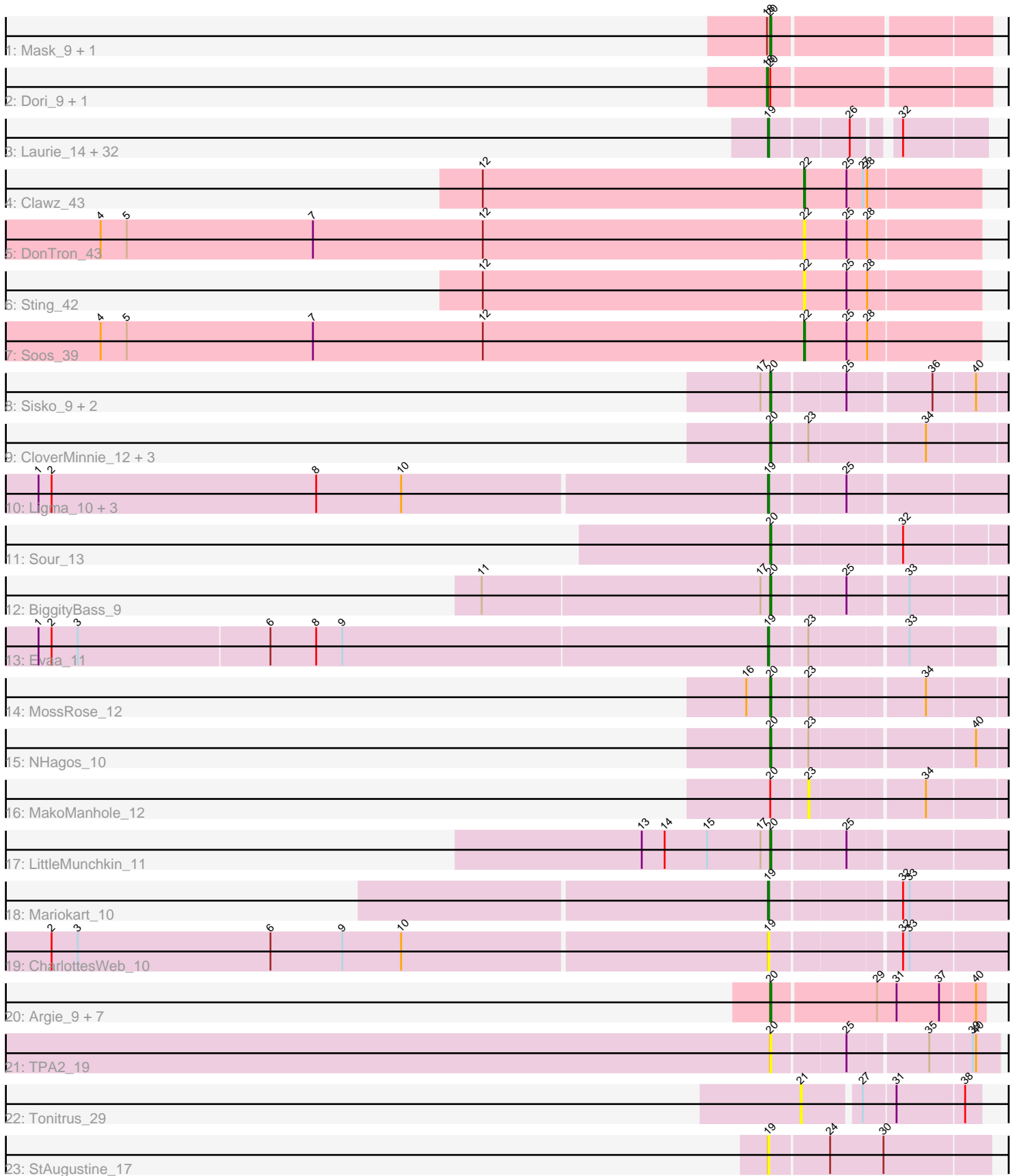


Pham 157832



Note: Tracks are now grouped by subcluster and scaled. Switching in subcluster is indicated by changes in track color. Track scale is now set by default to display the region 30 bp upstream of start 1 to 30 bp downstream of the last possible start. If this default region is judged to be packed too tightly with annotated starts, the track will be further scaled to only show that region of the ORF with annotated starts. This action will be indicated by adding "Zoomed" to the title. For starts, yellow indicates the location of called starts comprised solely of Glimmer/GeneMark auto-annotations, green indicates the location of called starts with at least 1 manual gene annotation.

Pham 157832 Report

This analysis was run 04/13/24 on database version 558.

Pham number 157832 has 72 members, 12 are drafts.

Phages represented in each track:

- Track 1 : Mask_9, Sejanus_9
- Track 2 : Dori_9, Mao1_8
- Track 3 : Laurie_14, Tinciduntolum_15, Allegro_14, Blocker23_14, Lars_14, Opia_14, Tres_14, Faze9_14, Rhinoforte_14, Ares_14, Godines_14, Lephleur_14, Rosebush_14, MasterPo_14, Holeinone_14, FrenchFry_14, Bananafish_14, Hedgerow_14, Brownie5_14, Glass_14, TA17A_14, Kaleb_14, Calamitous_14, West99_14, ItsyBitsy1_14, Phantasmagoria_14, Eaglehorse_14, Sabella_14, Boyle_14, LizLemon_14, Coffee_14, Kheth_14, Arbiter_14
- Track 4 : Clawz_43
- Track 5 : DonTron_43
- Track 6 : Sting_42
- Track 7 : Soos_39
- Track 8 : Sisko_9, Yago84_9, AnClar_9
- Track 9 : CloverMinnie_12, Wooper_12, CaiB_12, AnarQue_12
- Track 10 : Ligma_10, Fresco_10, Axumite_10, Shatter_10
- Track 11 : Sour_13
- Track 12 : BiggityBass_9
- Track 13 : Evaa_11
- Track 14 : MossRose_12
- Track 15 : NHagos_10
- Track 16 : MakoManhole_12
- Track 17 : LittleMunchkin_11
- Track 18 : Mariokart_10
- Track 19 : CharlottesWeb_10
- Track 20 : Argie_9, Taptic_8, D12_08, PR_08, Cepens_8, Megabear_8, GodPhather_9, Jeon_8
- Track 21 : TPA2_19
- Track 22 : Tonitrus_29
- Track 23 : StAugustine_17

Summary of Final Annotations (See graph section above for start numbers):

The start number called the most often in the published annotations is 19, it was called in 35 of the 60 non-draft genes in the pham.

Genes that call this "Most Annotated" start:

- Allegro_14, Arbitrator_14, Ares_14, Axumite_10, Bananafish_14, Blocker23_14, Boyle_14, Brownie5_14, Calamitous_14, CharlottesWeb_10, Coffee_14, Eaglehorse_14, Evaa_11, Faze9_14, FrenchFry_14, Fresco_10, Glass_14, Godines_14, Hedgerow_14, Holeinone_14, ItsyBitsy1_14, Kaleb_14, Kheth_14, Lars_14, Laurie_14, Lephleur_14, Ligma_10, LizLemon_14, Mariokart_10, MasterPo_14, Opia_14, Phantasmagoria_14, Rhinoforte_14, Rosebush_14, Sabella_14, Shatter_10, StAugustine_17, TA17A_14, Tinciduntolum_15, Tres_14, West99_14,

Genes that have the "Most Annotated" start but do not call it:

-

Genes that do not have the "Most Annotated" start:

- AnClar_9, AnarQue_12, Argie_9, BiggityBass_9, CaiB_12, Cepens_8, Clawz_43, CloverMinnie_12, D12_08, DonTron_43, Dori_9, GodPhather_9, Jeon_8, LittleMunchkin_11, MakoManhole_12, Mao1_8, Mask_9, Megabear_8, MossRose_12, NHagos_10, PR_08, Sejanus_9, Sisko_9, Soos_39, Sour_13, Sting_42, TPA2_19, Taptic_8, Tonitrus_29, Wooper_12, Yago84_9,

Summary by start number:

Start 18:

- Found in 4 of 72 (5.6%) of genes in pham
- Manual Annotations of this start: 1 of 60
- Called 50.0% of time when present
- Phage (with cluster) where this start called: Dori_9 (AD), Mao1_8 (AD),

Start 19:

- Found in 41 of 72 (56.9%) of genes in pham
- Manual Annotations of this start: 35 of 60
- Called 100.0% of time when present
- Phage (with cluster) where this start called: Allegro_14 (B2), Arbitrator_14 (B2), Ares_14 (B2), Axumite_10 (DR), Bananafish_14 (B2), Blocker23_14 (B2), Boyle_14 (B2), Brownie5_14 (B2), Calamitous_14 (B2), CharlottesWeb_10 (DR), Coffee_14 (B2), Eaglehorse_14 (B2), Evaa_11 (DR), Faze9_14 (B2), FrenchFry_14 (B2), Fresco_10 (DR), Glass_14 (B2), Godines_14 (B2), Hedgerow_14 (B2), Holeinone_14 (B2), ItsyBitsy1_14 (B2), Kaleb_14 (B2), Kheth_14 (B2), Lars_14 (B2), Laurie_14 (B2), Lephleur_14 (B2), Ligma_10 (DR), LizLemon_14 (B2), Mariokart_10 (DR), MasterPo_14 (B2), Opia_14 (B2), Phantasmagoria_14 (B2), Rhinoforte_14 (B2), Rosebush_14 (B2), Sabella_14 (B2), Shatter_10 (DR), StAugustine_17 (singleton), TA17A_14 (B2), Tinciduntolum_15 (B2), Tres_14 (B2), West99_14 (B2),

Start 20:

- Found in 26 of 72 (36.1%) of genes in pham
- Manual Annotations of this start: 22 of 60
- Called 88.5% of time when present
- Phage (with cluster) where this start called: AnClar_9 (DR), AnarQue_12 (DR), Argie_9 (W), BiggityBass_9 (DR), CaiB_12 (DR), Cepens_8 (W), CloverMinnie_12 (DR), D12_08 (W), GodPhather_9 (W), Jeon_8 (W), LittleMunchkin_11 (DR), Mask_9 (AD), Megabear_8 (W), MossRose_12 (DR), NHagos_10 (DR), PR_08 (W), Sejanus_9 (AD), Sisko_9 (DR), Sour_13 (DR), TPA2_19 (singleton), Taptic_8 (W),

Wooper_12 (DR), Yago84_9 (DR),

Start 21:

- Found in 1 of 72 (1.4%) of genes in pham
- No Manual Annotations of this start.
- Called 100.0% of time when present
- Phage (with cluster) where this start called: Tonitrus_29 (singleton),

Start 22:

- Found in 4 of 72 (5.6%) of genes in pham
- Manual Annotations of this start: 2 of 60
- Called 100.0% of time when present
- Phage (with cluster) where this start called: Clawz_43 (CP), DonTron_43 (CP), Soos_39 (CP), Sting_42 (CP),

Start 23:

- Found in 8 of 72 (11.1%) of genes in pham
- No Manual Annotations of this start.
- Called 12.5% of time when present
- Phage (with cluster) where this start called: MakoManhole_12 (DR),

Summary by clusters:

There are 6 clusters represented in this pham: singleton, B2, W, CP, DR, AD,

Info for manual annotations of cluster AD:

- Start number 18 was manually annotated 1 time for cluster AD.
- Start number 20 was manually annotated 2 times for cluster AD.

Info for manual annotations of cluster B2:

- Start number 19 was manually annotated 31 times for cluster B2.

Info for manual annotations of cluster CP:

- Start number 22 was manually annotated 2 times for cluster CP.

Info for manual annotations of cluster DR:

- Start number 19 was manually annotated 4 times for cluster DR.
- Start number 20 was manually annotated 12 times for cluster DR.

Info for manual annotations of cluster W:

- Start number 20 was manually annotated 8 times for cluster W.

Gene Information:

Gene: Allegro_14 Start: 12064, Stop: 12237, Start Num: 19

Candidate Starts for Allegro_14:

(Start: 19 @12064 has 35 MA's), (26, 12130), (32, 12163),

Gene: AnClar_9 Start: 9843, Stop: 10046, Start Num: 20

Candidate Starts for AnClar_9:

(17, 9834), (Start: 20 @9843 has 22 MA's), (25, 9906), (36, 9978), (40, 10014),

Gene: AnarQue_12 Start: 11030, Stop: 11233, Start Num: 20

Candidate Starts for AnarQue_12:

(Start: 20 @11030 has 22 MA's), (23, 11060), (34, 11159),

Gene: Arbiter_14 Start: 12154, Stop: 12327, Start Num: 19

Candidate Starts for Arbiter_14:

(Start: 19 @12154 has 35 MA's), (26, 12220), (32, 12253),

Gene: Ares_14 Start: 12064, Stop: 12237, Start Num: 19

Candidate Starts for Ares_14:

(Start: 19 @12064 has 35 MA's), (26, 12130), (32, 12163),

Gene: Argie_9 Start: 10545, Stop: 10733, Start Num: 20

Candidate Starts for Argie_9:

(Start: 20 @10545 has 22 MA's), (29, 10638), (31, 10656), (37, 10695), (40, 10725),

Gene: Axumite_10 Start: 9533, Stop: 9739, Start Num: 19

Candidate Starts for Axumite_10:

(1, 8870), (2, 8882), (8, 9125), (10, 9203), (Start: 19 @9533 has 35 MA's), (25, 9596),

Gene: Bananafish_14 Start: 12064, Stop: 12237, Start Num: 19

Candidate Starts for Bananafish_14:

(Start: 19 @12064 has 35 MA's), (26, 12130), (32, 12163),

Gene: BiggityBass_9 Start: 9351, Stop: 9554, Start Num: 20

Candidate Starts for BiggityBass_9:

(11, 9090), (17, 9342), (Start: 20 @9351 has 22 MA's), (25, 9414), (33, 9465),

Gene: Blocker23_14 Start: 12181, Stop: 12354, Start Num: 19

Candidate Starts for Blocker23_14:

(Start: 19 @12181 has 35 MA's), (26, 12247), (32, 12280),

Gene: Boyle_14 Start: 12181, Stop: 12354, Start Num: 19

Candidate Starts for Boyle_14:

(Start: 19 @12181 has 35 MA's), (26, 12247), (32, 12280),

Gene: Brownie5_14 Start: 12181, Stop: 12354, Start Num: 19

Candidate Starts for Brownie5_14:

(Start: 19 @12181 has 35 MA's), (26, 12247), (32, 12280),

Gene: CaiB_12 Start: 11030, Stop: 11233, Start Num: 20

Candidate Starts for CaiB_12:

(Start: 20 @11030 has 22 MA's), (23, 11060), (34, 11159),

Gene: Calamitous_14 Start: 12064, Stop: 12237, Start Num: 19

Candidate Starts for Calamitous_14:

(Start: 19 @12064 has 35 MA's), (26, 12130), (32, 12163),

Gene: Cepens_8 Start: 10284, Stop: 10472, Start Num: 20

Candidate Starts for Cepens_8:

(Start: 20 @10284 has 22 MA's), (29, 10377), (31, 10395), (37, 10434), (40, 10464),

Gene: CharlottesWeb_10 Start: 9585, Stop: 9791, Start Num: 19
Candidate Starts for CharlottesWeb_10:
(2, 8934), (3, 8958), (6, 9135), (9, 9201), (10, 9255), (Start: 19 @9585 has 35 MA's), (32, 9693), (33, 9699),

Gene: Clawz_43 Start: 22851, Stop: 23009, Start Num: 22
Candidate Starts for Clawz_43:
(12, 22557), (Start: 22 @22851 has 2 MA's), (25, 22890), (27, 22905), (28, 22908),

Gene: CloverMinnie_12 Start: 11030, Stop: 11233, Start Num: 20
Candidate Starts for CloverMinnie_12:
(Start: 20 @11030 has 22 MA's), (23, 11060), (34, 11159),

Gene: Coffee_14 Start: 12181, Stop: 12354, Start Num: 19
Candidate Starts for Coffee_14:
(Start: 19 @12181 has 35 MA's), (26, 12247), (32, 12280),

Gene: D12_08 Start: 10239, Stop: 10427, Start Num: 20
Candidate Starts for D12_08:
(Start: 20 @10239 has 22 MA's), (29, 10332), (31, 10350), (37, 10389), (40, 10419),

Gene: DonTron_43 Start: 23003, Stop: 23161, Start Num: 22
Candidate Starts for DonTron_43:
(4, 22358), (5, 22382), (7, 22553), (12, 22709), (Start: 22 @23003 has 2 MA's), (25, 23042), (28, 23060),

Gene: Dori_9 Start: 8150, Stop: 8341, Start Num: 18
Candidate Starts for Dori_9:
(Start: 18 @8150 has 1 MA's), (Start: 20 @8153 has 22 MA's),

Gene: Eaglehorse_14 Start: 12082, Stop: 12255, Start Num: 19
Candidate Starts for Eaglehorse_14:
(Start: 19 @12082 has 35 MA's), (26, 12148), (32, 12181),

Gene: Evaa_11 Start: 10856, Stop: 11044, Start Num: 19
Candidate Starts for Evaa_11:
(1, 10193), (2, 10205), (3, 10229), (6, 10403), (8, 10445), (9, 10469), (Start: 19 @10856 has 35 MA's), (23, 10886), (33, 10970),

Gene: Faze9_14 Start: 12181, Stop: 12354, Start Num: 19
Candidate Starts for Faze9_14:
(Start: 19 @12181 has 35 MA's), (26, 12247), (32, 12280),

Gene: FrenchFry_14 Start: 12181, Stop: 12354, Start Num: 19
Candidate Starts for FrenchFry_14:
(Start: 19 @12181 has 35 MA's), (26, 12247), (32, 12280),

Gene: Fresco_10 Start: 9533, Stop: 9739, Start Num: 19
Candidate Starts for Fresco_10:
(1, 8870), (2, 8882), (8, 9125), (10, 9203), (Start: 19 @9533 has 35 MA's), (25, 9596),

Gene: Glass_14 Start: 12181, Stop: 12354, Start Num: 19
Candidate Starts for Glass_14:

(Start: 19 @12181 has 35 MA's), (26, 12247), (32, 12280),

Gene: GodPhather_9 Start: 10542, Stop: 10730, Start Num: 20

Candidate Starts for GodPhather_9:

(Start: 20 @10542 has 22 MA's), (29, 10635), (31, 10653), (37, 10692), (40, 10722),

Gene: Godines_14 Start: 12064, Stop: 12237, Start Num: 19

Candidate Starts for Godines_14:

(Start: 19 @12064 has 35 MA's), (26, 12130), (32, 12163),

Gene: Hedgerow_14 Start: 12163, Stop: 12336, Start Num: 19

Candidate Starts for Hedgerow_14:

(Start: 19 @12163 has 35 MA's), (26, 12229), (32, 12262),

Gene: Holeinone_14 Start: 12063, Stop: 12236, Start Num: 19

Candidate Starts for Holeinone_14:

(Start: 19 @12063 has 35 MA's), (26, 12129), (32, 12162),

Gene: ItsyBitsy1_14 Start: 12055, Stop: 12228, Start Num: 19

Candidate Starts for ItsyBitsy1_14:

(Start: 19 @12055 has 35 MA's), (26, 12121), (32, 12154),

Gene: Jeon_8 Start: 10272, Stop: 10460, Start Num: 20

Candidate Starts for Jeon_8:

(Start: 20 @10272 has 22 MA's), (29, 10365), (31, 10383), (37, 10422), (40, 10452),

Gene: Kaleb_14 Start: 12181, Stop: 12354, Start Num: 19

Candidate Starts for Kaleb_14:

(Start: 19 @12181 has 35 MA's), (26, 12247), (32, 12280),

Gene: Kheth_14 Start: 12064, Stop: 12237, Start Num: 19

Candidate Starts for Kheth_14:

(Start: 19 @12064 has 35 MA's), (26, 12130), (32, 12163),

Gene: Lars_14 Start: 12181, Stop: 12354, Start Num: 19

Candidate Starts for Lars_14:

(Start: 19 @12181 has 35 MA's), (26, 12247), (32, 12280),

Gene: Laurie_14 Start: 12065, Stop: 12238, Start Num: 19

Candidate Starts for Laurie_14:

(Start: 19 @12065 has 35 MA's), (26, 12131), (32, 12164),

Gene: Lephleur_14 Start: 12064, Stop: 12237, Start Num: 19

Candidate Starts for Lephleur_14:

(Start: 19 @12064 has 35 MA's), (26, 12130), (32, 12163),

Gene: Ligma_10 Start: 9533, Stop: 9739, Start Num: 19

Candidate Starts for Ligma_10:

(1, 8870), (2, 8882), (8, 9125), (10, 9203), (Start: 19 @9533 has 35 MA's), (25, 9596),

Gene: LittleMunchkin_11 Start: 10824, Stop: 11030, Start Num: 20

Candidate Starts for LittleMunchkin_11:

(13, 10707), (14, 10728), (15, 10767), (17, 10815), (Start: 20 @10824 has 22 MA's), (25, 10887),

Gene: LizLemon_14 Start: 12181, Stop: 12354, Start Num: 19
Candidate Starts for LizLemon_14:
(Start: 19 @12181 has 35 MA's), (26, 12247), (32, 12280),

Gene: MakoManhole_12 Start: 11060, Stop: 11233, Start Num: 23
Candidate Starts for MakoManhole_12:
(Start: 20 @11030 has 22 MA's), (23, 11060), (34, 11159),

Gene: Mao1_8 Start: 8546, Stop: 8737, Start Num: 18
Candidate Starts for Mao1_8:
(Start: 18 @8546 has 1 MA's), (Start: 20 @8549 has 22 MA's),

Gene: Mariokart_10 Start: 9585, Stop: 9791, Start Num: 19
Candidate Starts for Mariokart_10:
(Start: 19 @9585 has 35 MA's), (32, 9693), (33, 9699),

Gene: Mask_9 Start: 8550, Stop: 8738, Start Num: 20
Candidate Starts for Mask_9:
(Start: 18 @8547 has 1 MA's), (Start: 20 @8550 has 22 MA's),

Gene: MasterPo_14 Start: 12064, Stop: 12237, Start Num: 19
Candidate Starts for MasterPo_14:
(Start: 19 @12064 has 35 MA's), (26, 12130), (32, 12163),

Gene: Megabear_8 Start: 10239, Stop: 10427, Start Num: 20
Candidate Starts for Megabear_8:
(Start: 20 @10239 has 22 MA's), (29, 10332), (31, 10350), (37, 10389), (40, 10419),

Gene: MossRose_12 Start: 11030, Stop: 11233, Start Num: 20
Candidate Starts for MossRose_12:
(16, 11009), (Start: 20 @11030 has 22 MA's), (23, 11060), (34, 11159),

Gene: NHagos_10 Start: 9514, Stop: 9717, Start Num: 20
Candidate Starts for NHagos_10:
(Start: 20 @9514 has 22 MA's), (23, 9544), (40, 9685),

Gene: Opia_14 Start: 12064, Stop: 12237, Start Num: 19
Candidate Starts for Opia_14:
(Start: 19 @12064 has 35 MA's), (26, 12130), (32, 12163),

Gene: PR_08 Start: 10239, Stop: 10427, Start Num: 20
Candidate Starts for PR_08:
(Start: 20 @10239 has 22 MA's), (29, 10332), (31, 10350), (37, 10389), (40, 10419),

Gene: Phantasmagoria_14 Start: 12064, Stop: 12237, Start Num: 19
Candidate Starts for Phantasmagoria_14:
(Start: 19 @12064 has 35 MA's), (26, 12130), (32, 12163),

Gene: Rhinoforte_14 Start: 12181, Stop: 12354, Start Num: 19
Candidate Starts for Rhinoforte_14:
(Start: 19 @12181 has 35 MA's), (26, 12247), (32, 12280),

Gene: Rosebush_14 Start: 12181, Stop: 12354, Start Num: 19

Candidate Starts for Rosebush_14:

(Start: 19 @12181 has 35 MA's), (26, 12247), (32, 12280),

Gene: Sabella_14 Start: 12064, Stop: 12237, Start Num: 19

Candidate Starts for Sabella_14:

(Start: 19 @12064 has 35 MA's), (26, 12130), (32, 12163),

Gene: Sejanus_9 Start: 9366, Stop: 9554, Start Num: 20

Candidate Starts for Sejanus_9:

(Start: 18 @9363 has 1 MA's), (Start: 20 @9366 has 22 MA's),

Gene: Shatter_10 Start: 9533, Stop: 9739, Start Num: 19

Candidate Starts for Shatter_10:

(1, 8870), (2, 8882), (8, 9125), (10, 9203), (Start: 19 @9533 has 35 MA's), (25, 9596),

Gene: Sisko_9 Start: 9345, Stop: 9548, Start Num: 20

Candidate Starts for Sisko_9:

(17, 9336), (Start: 20 @9345 has 22 MA's), (25, 9408), (36, 9480), (40, 9516),

Gene: Soos_39 Start: 22170, Stop: 22328, Start Num: 22

Candidate Starts for Soos_39:

(4, 21525), (5, 21549), (7, 21720), (12, 21876), (Start: 22 @22170 has 2 MA's), (25, 22209), (28, 22227),

Gene: Sour_13 Start: 11191, Stop: 11394, Start Num: 20

Candidate Starts for Sour_13:

(Start: 20 @11191 has 22 MA's), (32, 11299),

Gene: StAugustine_17 Start: 12941, Stop: 13135, Start Num: 19

Candidate Starts for StAugustine_17:

(Start: 19 @12941 has 35 MA's), (24, 12992), (30, 13040),

Gene: Sting_42 Start: 22609, Stop: 22767, Start Num: 22

Candidate Starts for Sting_42:

(12, 22315), (Start: 22 @22609 has 2 MA's), (25, 22648), (28, 22666),

Gene: TA17A_14 Start: 12064, Stop: 12237, Start Num: 19

Candidate Starts for TA17A_14:

(Start: 19 @12064 has 35 MA's), (26, 12130), (32, 12163),

Gene: TPA2_19 Start: 12170, Stop: 12361, Start Num: 20

Candidate Starts for TPA2_19:

(Start: 20 @12170 has 22 MA's), (25, 12233), (35, 12302), (39, 12338), (40, 12341),

Gene: Taptic_8 Start: 10239, Stop: 10427, Start Num: 20

Candidate Starts for Taptic_8:

(Start: 20 @10239 has 22 MA's), (29, 10332), (31, 10350), (37, 10389), (40, 10419),

Gene: Tinciduntolum_15 Start: 12180, Stop: 12353, Start Num: 19

Candidate Starts for Tinciduntolum_15:

(Start: 19 @12180 has 35 MA's), (26, 12246), (32, 12279),

Gene: Tonitrus_29 Start: 18735, Stop: 18884, Start Num: 21
Candidate Starts for Tonitrus_29:
(21, 18735), (27, 18783), (31, 18810), (38, 18870),

Gene: Tres_14 Start: 12064, Stop: 12237, Start Num: 19
Candidate Starts for Tres_14:
(Start: 19 @12064 has 35 MA's), (26, 12130), (32, 12163),

Gene: West99_14 Start: 12181, Stop: 12354, Start Num: 19
Candidate Starts for West99_14:
(Start: 19 @12181 has 35 MA's), (26, 12247), (32, 12280),

Gene: Wooper_12 Start: 11030, Stop: 11233, Start Num: 20
Candidate Starts for Wooper_12:
(Start: 20 @11030 has 22 MA's), (23, 11060), (34, 11159),

Gene: Yago84_9 Start: 9354, Stop: 9557, Start Num: 20
Candidate Starts for Yago84_9:
(17, 9345), (Start: 20 @9354 has 22 MA's), (25, 9417), (36, 9489), (40, 9525),