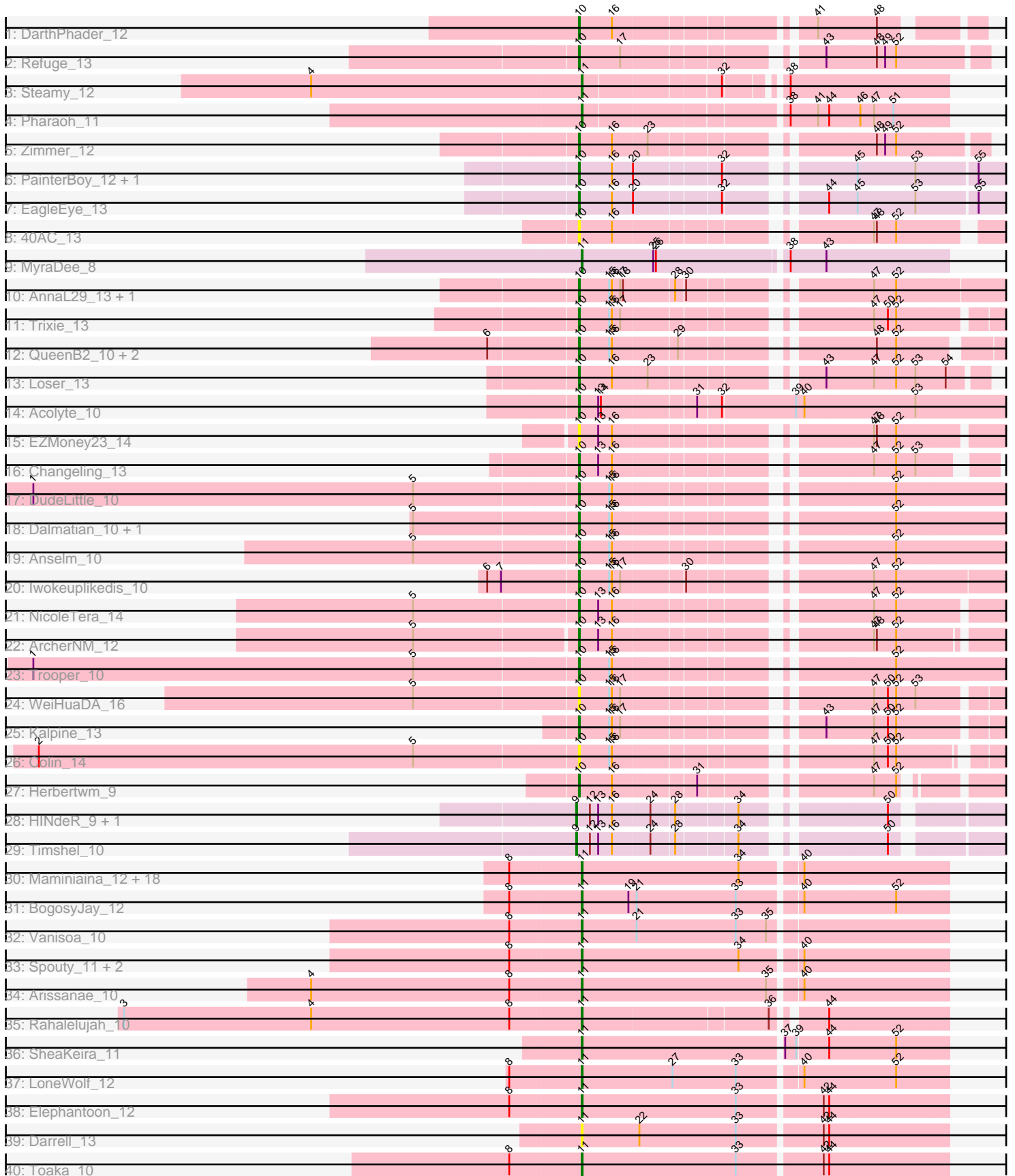


Pham 157848



Note: Tracks are now grouped by subcluster and scaled. Switching in subcluster is indicated by changes in track color. Track scale is now set by default to display the region 30 bp upstream of start 1 to 30 bp downstream of the last possible start. If this default region is judged to be packed too tightly with annotated starts, the track will be further scaled to only show that region of the ORF with annotated starts. This action will be indicated by adding "Zoomed" to the title. For starts, yellow indicates the location of called starts comprised solely of Glimmer/GeneMark auto-annotations, green indicates the location of called starts with at least 1 manual gene annotation.

Pham 157848 Report

This analysis was run 04/13/24 on database version 558.

Pham number 157848 has 66 members, 7 are drafts.

Phages represented in each track:

- Track 1 : DarthPhader_12
- Track 2 : Refuge_13
- Track 3 : Steamy_12
- Track 4 : Pharaoh_11
- Track 5 : Zimmer_12
- Track 6 : PainterBoy_12, Lucyedi_12
- Track 7 : EagleEye_13
- Track 8 : 40AC_13
- Track 9 : MyraDee_8
- Track 10 : AnnaL29_13, RedRock_13
- Track 11 : Trixie_13
- Track 12 : QueenB2_10, Heffalump_12, Fameo_10
- Track 13 : Loser_13
- Track 14 : Acolyte_10
- Track 15 : EZMoney23_14
- Track 16 : Changeling_13
- Track 17 : DudeLittle_10
- Track 18 : Dalmatian_10, Retro23_10
- Track 19 : Anselm_10
- Track 20 : Iwokeuplikedis_10
- Track 21 : NicoleTera_14
- Track 22 : ArcherNM_12
- Track 23 : Trooper_10
- Track 24 : WeiHuaDA_16
- Track 25 : Kalpine_13
- Track 26 : Colin_14
- Track 27 : Herbertwm_9
- Track 28 : HINdeR_9, DroogsArmy_10
- Track 29 : Timshel_10
- Track 30 : Maminiaina_12, Alma_12, Conquerage_12, Phaeder_12, Pioneer_12, Aliter_12, Myxus_12, Catalina_12, Phonnegut_12, Beemo_12, Fayely_12, Ugenie5_9, Scherzo_12, Tubs_12, EmyBug_10, Qobbit_12, ExplosioNervosa_12, HortumSL17_12, PackMan_12
- Track 31 : BogosyJay_12
- Track 32 : Vanisoa_10
- Track 33 : Spouty_11, Priya_12, Eidsmoe_12
- Track 34 : Arissanae_10

- Track 35 : Rahalelujah_10
- Track 36 : SheaKeira_11
- Track 37 : LoneWolf_12
- Track 38 : Elephantoon_12
- Track 39 : Darrell_13
- Track 40 : Toaka_10

Summary of Final Annotations (See graph section above for start numbers):

The start number called the most often in the published annotations is 11, it was called in 31 of the 59 non-draft genes in the pham.

Genes that call this "Most Annotated" start:

- Aliter_12, Alma_12, Arissanae_10, Beemo_12, BogosyJay_12, Catalina_12, Conquerage_12, Darrell_13, Eidsmoe_12, Elephantoon_12, EmyBug_10, ExplosioNervosa_12, Fayely_12, HortumSL17_12, LoneWolf_12, Maminiaina_12, MyraDee_8, Myxus_12, PackMan_12, Phaeder_12, Pharaoh_11, Phonnegut_12, Pioneer_12, Priya_12, Qobbit_12, Rahalelujah_10, Scherzo_12, SheaKeira_11, Spouty_11, Steamy_12, Toaka_10, Tubs_12, Ugenie5_9, Vanisoa_10,

Genes that have the "Most Annotated" start but do not call it:

-

Genes that do not have the "Most Annotated" start:

- 40AC_13, Acolyte_10, AnnaL29_13, Anselm_10, ArcherNM_12, Changeling_13, Colin_14, Dalmatian_10, DarthPhader_12, DroogsArmy_10, DudeLittle_10, EZMoney23_14, EagleEye_13, Fameo_10, HINdeR_9, Heffalump_12, Herbertwm_9, Iwokeuplikedis_10, Kalpine_13, Loser_13, Lucyedi_12, NicoleTera_14, PainterBoy_12, QueenB2_10, RedRock_13, Refuge_13, Retro23_10, Timshel_10, Trixie_13, Trooper_10, WeiHuaDA_16, Zimmer_12,

Summary by start number:

Start 9:

- Found in 3 of 66 (4.5%) of genes in pham
- Manual Annotations of this start: 3 of 59
- Called 100.0% of time when present
- Phage (with cluster) where this start called: DroogsArmy_10 (A7), HINdeR_9 (A7), Timshel_10 (A7),

Start 10:

- Found in 29 of 66 (43.9%) of genes in pham
- Manual Annotations of this start: 25 of 59
- Called 100.0% of time when present
- Phage (with cluster) where this start called: 40AC_13 (A17), Acolyte_10 (A2), AnnaL29_13 (A2), Anselm_10 (A2), ArcherNM_12 (A2), Changeling_13 (A2), Colin_14 (A2), Dalmatian_10 (A2), DarthPhader_12 (A12), DudeLittle_10 (A2), EZMoney23_14 (A2), EagleEye_13 (A16), Fameo_10 (A2), Heffalump_12 (A2), Herbertwm_9 (A2), Iwokeuplikedis_10 (A2), Kalpine_13 (A2), Loser_13 (A2), Lucyedi_12 (A16), NicoleTera_14 (A2), PainterBoy_12 (A16), QueenB2_10 (A2),

RedRock_13 (A2), Refuge_13 (A12), Retro23_10 (A2), Trixie_13 (A2), Trooper_10 (A2), WeiHuaDA_16 (A2), Zimmer_12 (A12),

Start 11:

- Found in 34 of 66 (51.5%) of genes in pham
- Manual Annotations of this start: 31 of 59
- Called 100.0% of time when present
- Phage (with cluster) where this start called: Aliter_12 (A9), Alma_12 (A9), Arissanae_10 (A9), Beemo_12 (A9), BogosyJay_12 (A9), Catalina_12 (A9), Conquerage_12 (A9), Darrell_13 (A9), Eidsmoe_12 (A9), Elephantoon_12 (A9), EmyBug_10 (A9), ExplosioNervosa_12 (A9), Fayely_12 (A9), HortumSL17_12 (A9), LoneWolf_12 (A9), Maminiaina_12 (A9), MyraDee_8 (A18), Myxus_12 (A9), PackMan_12 (A9), Phaeder_12 (A9), Pharaoh_11 (A12), Phonnegut_12 (A9), Pioneer_12 (A9), Priya_12 (A9), Qobbit_12 (A9), Rahalelujah_10 (A9), Scherzo_12 (A9), SheaKeira_11 (A9), Spouty_11 (A9), Steamy_12 (A12), Toaka_10 (A9), Tubs_12 (A9), Ugenie5_9 (A9), Vanisoa_10 (A9),

Summary by clusters:

There are 7 clusters represented in this pham: A17, A16, A12, A18, A2, A7, A9,

Info for manual annotations of cluster A12:

- Start number 10 was manually annotated 3 times for cluster A12.
- Start number 11 was manually annotated 2 times for cluster A12.

Info for manual annotations of cluster A16:

- Start number 10 was manually annotated 3 times for cluster A16.

Info for manual annotations of cluster A18:

- Start number 11 was manually annotated 1 time for cluster A18.

Info for manual annotations of cluster A2:

- Start number 10 was manually annotated 19 times for cluster A2.

Info for manual annotations of cluster A7:

- Start number 9 was manually annotated 3 times for cluster A7.

Info for manual annotations of cluster A9:

- Start number 11 was manually annotated 28 times for cluster A9.

Gene Information:

Gene: 40AC_13 Start: 8077, Stop: 8496, Start Num: 10

Candidate Starts for 40AC_13:

(Start: 10 @8077 has 25 MA's), (16, 8113), (47, 8353), (48, 8356), (52, 8377),

Gene: Acolyte_10 Start: 6056, Stop: 6523, Start Num: 10

Candidate Starts for Acolyte_10:

(Start: 10 @6056 has 25 MA's), (13, 6077), (14, 6080), (31, 6176), (32, 6200), (39, 6278), (40, 6287), (53, 6407),

Gene: Aliter_12 Start: 7651, Stop: 8037, Start Num: 11

Candidate Starts for Aliter_12:

(8, 7576), (Start: 11 @7651 has 31 MA's), (34, 7822), (40, 7882),

Gene: Alma_12 Start: 7730, Stop: 8116, Start Num: 11

Candidate Starts for Alma_12:

(8, 7655), (Start: 11 @7730 has 31 MA's), (34, 7901), (40, 7961),

Gene: AnnaL29_13 Start: 7888, Stop: 8322, Start Num: 10

Candidate Starts for AnnaL29_13:

(Start: 10 @7888 has 25 MA's), (15, 7921), (16, 7924), (17, 7933), (18, 7936), (28, 7987), (30, 7996), (47, 8164), (52, 8188),

Gene: Anselm_10 Start: 6094, Stop: 6534, Start Num: 10

Candidate Starts for Anselm_10:

(5, 5920), (Start: 10 @6094 has 25 MA's), (15, 6127), (16, 6130), (52, 6394),

Gene: ArcherNM_12 Start: 7805, Stop: 8230, Start Num: 10

Candidate Starts for ArcherNM_12:

(5, 7634), (Start: 10 @7805 has 25 MA's), (13, 7826), (16, 7841), (47, 8081), (48, 8084), (52, 8105),

Gene: Arissanae_10 Start: 5852, Stop: 6238, Start Num: 11

Candidate Starts for Arissanae_10:

(4, 5561), (8, 5777), (Start: 11 @5852 has 31 MA's), (35, 6053), (40, 6083),

Gene: Beemo_12 Start: 7757, Stop: 8143, Start Num: 11

Candidate Starts for Beemo_12:

(8, 7682), (Start: 11 @7757 has 31 MA's), (34, 7928), (40, 7988),

Gene: BogosyJay_12 Start: 7514, Stop: 7900, Start Num: 11

Candidate Starts for BogosyJay_12:

(8, 7439), (Start: 11 @7514 has 31 MA's), (19, 7565), (21, 7574), (33, 7682), (40, 7745), (52, 7844),

Gene: Catalina_12 Start: 7724, Stop: 8110, Start Num: 11

Candidate Starts for Catalina_12:

(8, 7649), (Start: 11 @7724 has 31 MA's), (34, 7895), (40, 7955),

Gene: Changeling_13 Start: 7898, Stop: 8287, Start Num: 10

Candidate Starts for Changeling_13:

(Start: 10 @7898 has 25 MA's), (13, 7919), (16, 7934), (47, 8174), (52, 8198), (53, 8219),

Gene: Colin_14 Start: 7692, Stop: 8105, Start Num: 10

Candidate Starts for Colin_14:

(2, 7110), (5, 7518), (Start: 10 @7692 has 25 MA's), (15, 7725), (16, 7728), (47, 7968), (50, 7983), (52, 7992),

Gene: Conquerage_12 Start: 7753, Stop: 8139, Start Num: 11

Candidate Starts for Conquerage_12:

(8, 7678), (Start: 11 @7753 has 31 MA's), (34, 7924), (40, 7984),

Gene: Dalmatian_10 Start: 6085, Stop: 6525, Start Num: 10

Candidate Starts for Dalmatian_10:

(5, 5911), (Start: 10 @6085 has 25 MA's), (15, 6118), (16, 6121), (52, 6385),

Gene: Darrell_13 Start: 7946, Stop: 8335, Start Num: 11

Candidate Starts for Darrell_13:

(Start: 11 @7946 has 31 MA's), (22, 8009), (33, 8114), (42, 8201), (44, 8207),

Gene: DarthPhader_12 Start: 7926, Stop: 8303, Start Num: 10

Candidate Starts for DarthPhader_12:

(Start: 10 @7926 has 25 MA's), (16, 7962), (41, 8151), (48, 8214),

Gene: DroogsArmy_10 Start: 6654, Stop: 7067, Start Num: 9

Candidate Starts for DroogsArmy_10:

(Start: 9 @6654 has 3 MA's), (12, 6669), (13, 6678), (16, 6693), (24, 6732), (28, 6756), (34, 6816), (50, 6948),

Gene: DudeLittle_10 Start: 6087, Stop: 6527, Start Num: 10

Candidate Starts for DudeLittle_10:

(1, 5499), (5, 5913), (Start: 10 @6087 has 25 MA's), (15, 6120), (16, 6123), (52, 6387),

Gene: EZMoney23_14 Start: 7982, Stop: 8410, Start Num: 10

Candidate Starts for EZMoney23_14:

(Start: 10 @7982 has 25 MA's), (13, 8003), (16, 8018), (47, 8258), (48, 8261), (52, 8282),

Gene: EagleEye_13 Start: 7139, Stop: 7555, Start Num: 10

Candidate Starts for EagleEye_13:

(Start: 10 @7139 has 25 MA's), (16, 7175), (20, 7196), (32, 7283), (44, 7367), (45, 7397), (53, 7460), (55, 7520),

Gene: Eidsmoe_12 Start: 7753, Stop: 8139, Start Num: 11

Candidate Starts for Eidsmoe_12:

(8, 7678), (Start: 11 @7753 has 31 MA's), (34, 7924), (40, 7984),

Gene: Elephantoon_12 Start: 7375, Stop: 7764, Start Num: 11

Candidate Starts for Elephantoon_12:

(8, 7300), (Start: 11 @7375 has 31 MA's), (33, 7543), (42, 7630), (44, 7636),

Gene: EmyBug_10 Start: 7753, Stop: 8139, Start Num: 11

Candidate Starts for EmyBug_10:

(8, 7678), (Start: 11 @7753 has 31 MA's), (34, 7924), (40, 7984),

Gene: ExplosioNervosa_12 Start: 7756, Stop: 8142, Start Num: 11

Candidate Starts for ExplosioNervosa_12:

(8, 7681), (Start: 11 @7756 has 31 MA's), (34, 7927), (40, 7987),

Gene: Fameo_10 Start: 6032, Stop: 6451, Start Num: 10

Candidate Starts for Fameo_10:

(6, 5939), (Start: 10 @6032 has 25 MA's), (15, 6065), (16, 6068), (29, 6134), (48, 6311), (52, 6332),

Gene: Fayely_12 Start: 7756, Stop: 8142, Start Num: 11

Candidate Starts for Fayely_12:

(8, 7681), (Start: 11 @7756 has 31 MA's), (34, 7927), (40, 7987),

Gene: HINdeR_9 Start: 6752, Stop: 7165, Start Num: 9

Candidate Starts for HINdeR_9:

(Start: 9 @6752 has 3 MA's), (12, 6767), (13, 6776), (16, 6791), (24, 6830), (28, 6854), (34, 6914), (50, 7046),

Gene: Heffalump_12 Start: 7831, Stop: 8250, Start Num: 10

Candidate Starts for Heffalump_12:

(6, 7738), (Start: 10 @7831 has 25 MA's), (15, 7864), (16, 7867), (29, 7933), (48, 8110), (52, 8131),

Gene: Herbertwm_9 Start: 5886, Stop: 6293, Start Num: 10

Candidate Starts for Herbertwm_9:

(Start: 10 @5886 has 25 MA's), (16, 5922), (31, 6006), (47, 6162), (52, 6186),

Gene: HortumSL17_12 Start: 7723, Stop: 8109, Start Num: 11

Candidate Starts for HortumSL17_12:

(8, 7648), (Start: 11 @7723 has 31 MA's), (34, 7894), (40, 7954),

Gene: Iwokeuplikedis_10 Start: 5757, Stop: 6194, Start Num: 10

Candidate Starts for Iwokeuplikedis_10:

(6, 5664), (7, 5679), (Start: 10 @5757 has 25 MA's), (15, 5790), (16, 5793), (17, 5802), (30, 5865), (47, 6033), (52, 6057),

Gene: Kalpine_13 Start: 7796, Stop: 8218, Start Num: 10

Candidate Starts for Kalpine_13:

(Start: 10 @7796 has 25 MA's), (15, 7829), (16, 7832), (17, 7841), (43, 8021), (47, 8072), (50, 8087), (52, 8096),

Gene: LoneWolf_12 Start: 7570, Stop: 7956, Start Num: 11

Candidate Starts for LoneWolf_12:

(8, 7495), (Start: 11 @7570 has 31 MA's), (27, 7669), (33, 7738), (40, 7801), (52, 7900),

Gene: Loser_13 Start: 7855, Stop: 8244, Start Num: 10

Candidate Starts for Loser_13:

(Start: 10 @7855 has 25 MA's), (16, 7891), (23, 7927), (43, 8080), (47, 8131), (52, 8155), (53, 8176), (54, 8206),

Gene: Lucyedi_12 Start: 7076, Stop: 7492, Start Num: 10

Candidate Starts for Lucyedi_12:

(Start: 10 @7076 has 25 MA's), (16, 7112), (20, 7133), (32, 7220), (45, 7334), (53, 7397), (55, 7457),

Gene: Maminiaina_12 Start: 7493, Stop: 7879, Start Num: 11

Candidate Starts for Maminiaina_12:

(8, 7418), (Start: 11 @7493 has 31 MA's), (34, 7664), (40, 7724),

Gene: MyraDee_8 Start: 4622, Stop: 5008, Start Num: 11

Candidate Starts for MyraDee_8:

(Start: 11 @4622 has 31 MA's), (25, 4700), (26, 4703), (38, 4838), (43, 4877),

Gene: Myxus_12 Start: 7723, Stop: 8109, Start Num: 11

Candidate Starts for Myxus_12:

(8, 7648), (Start: 11 @7723 has 31 MA's), (34, 7894), (40, 7954),

Gene: NicoleTera_14 Start: 7753, Stop: 8181, Start Num: 10

Candidate Starts for NicoleTera_14:

(5, 7579), (Start: 10 @7753 has 25 MA's), (13, 7774), (16, 7789), (47, 8029), (52, 8053),

Gene: PackMan_12 Start: 7723, Stop: 8109, Start Num: 11

Candidate Starts for PackMan_12:

(8, 7648), (Start: 11 @7723 has 31 MA's), (34, 7894), (40, 7954),

Gene: PainterBoy_12 Start: 7076, Stop: 7492, Start Num: 10

Candidate Starts for PainterBoy_12:

(Start: 10 @7076 has 25 MA's), (16, 7112), (20, 7133), (32, 7220), (45, 7334), (53, 7397), (55, 7457),

Gene: Phaeder_12 Start: 7723, Stop: 8109, Start Num: 11

Candidate Starts for Phaeder_12:

(8, 7648), (Start: 11 @7723 has 31 MA's), (34, 7894), (40, 7954),

Gene: Pharaoh_11 Start: 7518, Stop: 7892, Start Num: 11

Candidate Starts for Pharaoh_11:

(Start: 11 @7518 has 31 MA's), (38, 7722), (41, 7752), (44, 7764), (46, 7797), (47, 7812), (51, 7833),

Gene: Phonnegut_12 Start: 7756, Stop: 8142, Start Num: 11

Candidate Starts for Phonnegut_12:

(8, 7681), (Start: 11 @7756 has 31 MA's), (34, 7927), (40, 7987),

Gene: Pioneer_12 Start: 7756, Stop: 8142, Start Num: 11

Candidate Starts for Pioneer_12:

(8, 7681), (Start: 11 @7756 has 31 MA's), (34, 7927), (40, 7987),

Gene: Priya_12 Start: 7754, Stop: 8140, Start Num: 11

Candidate Starts for Priya_12:

(8, 7679), (Start: 11 @7754 has 31 MA's), (34, 7925), (40, 7985),

Gene: Qobbit_12 Start: 7753, Stop: 8139, Start Num: 11

Candidate Starts for Qobbit_12:

(8, 7678), (Start: 11 @7753 has 31 MA's), (34, 7924), (40, 7984),

Gene: QueenB2_10 Start: 6032, Stop: 6451, Start Num: 10

Candidate Starts for QueenB2_10:

(6, 5939), (Start: 10 @6032 has 25 MA's), (15, 6065), (16, 6068), (29, 6134), (48, 6311), (52, 6332),

Gene: Rahalelujah_10 Start: 5820, Stop: 6185, Start Num: 11

Candidate Starts for Rahalelujah_10:

(3, 5325), (4, 5529), (8, 5745), (Start: 11 @5820 has 31 MA's), (36, 6012), (44, 6057),

Gene: RedRock_13 Start: 7965, Stop: 8399, Start Num: 10

Candidate Starts for RedRock_13:

(Start: 10 @7965 has 25 MA's), (15, 7998), (16, 8001), (17, 8010), (18, 8013), (28, 8064), (30, 8073), (47, 8241), (52, 8265),

Gene: Refuge_13 Start: 8359, Stop: 8748, Start Num: 10

Candidate Starts for Refuge_13:

(Start: 10 @8359 has 25 MA's), (17, 8404), (43, 8584), (48, 8638), (49, 8647), (52, 8659),

Gene: Retro23_10 Start: 6086, Stop: 6526, Start Num: 10

Candidate Starts for Retro23_10:

(5, 5912), (Start: 10 @6086 has 25 MA's), (15, 6119), (16, 6122), (52, 6386),

Gene: Scherzo_12 Start: 7756, Stop: 8142, Start Num: 11

Candidate Starts for Scherzo_12:

(8, 7681), (Start: 11 @7756 has 31 MA's), (34, 7927), (40, 7987),

Gene: SheaKeira_11 Start: 5924, Stop: 6310, Start Num: 11

Candidate Starts for SheaKeira_11:

(Start: 11 @5924 has 31 MA's), (37, 6137), (39, 6149), (44, 6182), (52, 6254),

Gene: Spouty_11 Start: 7753, Stop: 8139, Start Num: 11

Candidate Starts for Spouty_11:

(8, 7678), (Start: 11 @7753 has 31 MA's), (34, 7924), (40, 7984),

Gene: Steamy_12 Start: 7580, Stop: 7939, Start Num: 11

Candidate Starts for Steamy_12:

(4, 7289), (Start: 11 @7580 has 31 MA's), (32, 7718), (38, 7769),

Gene: Timshel_10 Start: 6896, Stop: 7309, Start Num: 9

Candidate Starts for Timshel_10:

(Start: 9 @6896 has 3 MA's), (12, 6911), (13, 6920), (16, 6935), (24, 6974), (28, 6998), (34, 7058), (50, 7190),

Gene: Toaka_10 Start: 6100, Stop: 6489, Start Num: 11

Candidate Starts for Toaka_10:

(8, 6025), (Start: 11 @6100 has 31 MA's), (33, 6268), (42, 6355), (44, 6361),

Gene: Trixie_13 Start: 7668, Stop: 8090, Start Num: 10

Candidate Starts for Trixie_13:

(Start: 10 @7668 has 25 MA's), (15, 7701), (16, 7704), (17, 7713), (47, 7944), (50, 7959), (52, 7968),

Gene: Trooper_10 Start: 5793, Stop: 6233, Start Num: 10

Candidate Starts for Trooper_10:

(1, 5205), (5, 5619), (Start: 10 @5793 has 25 MA's), (15, 5826), (16, 5829), (52, 6093),

Gene: Tubs_12 Start: 7723, Stop: 8109, Start Num: 11

Candidate Starts for Tubs_12:

(8, 7648), (Start: 11 @7723 has 31 MA's), (34, 7894), (40, 7954),

Gene: Ugenie5_9 Start: 7756, Stop: 8142, Start Num: 11

Candidate Starts for Ugenie5_9:

(8, 7681), (Start: 11 @7756 has 31 MA's), (34, 7927), (40, 7987),

Gene: Vanisoa_10 Start: 5811, Stop: 6197, Start Num: 11

Candidate Starts for Vanisoa_10:

(8, 5736), (Start: 11 @5811 has 31 MA's), (21, 5871), (33, 5979), (35, 6012),

Gene: WeiHuaDA_16 Start: 8278, Stop: 8700, Start Num: 10

Candidate Starts for WeiHuaDA_16:

(5, 8104), (Start: 10 @8278 has 25 MA's), (15, 8311), (16, 8314), (17, 8323), (47, 8554), (50, 8569), (52, 8578), (53, 8599),

Gene: Zimmer_12 Start: 7633, Stop: 8022, Start Num: 10

Candidate Starts for Zimmer_12:

(Start: 10 @7633 has 25 MA's), (16, 7669), (23, 7705), (48, 7912), (49, 7921), (52, 7933),