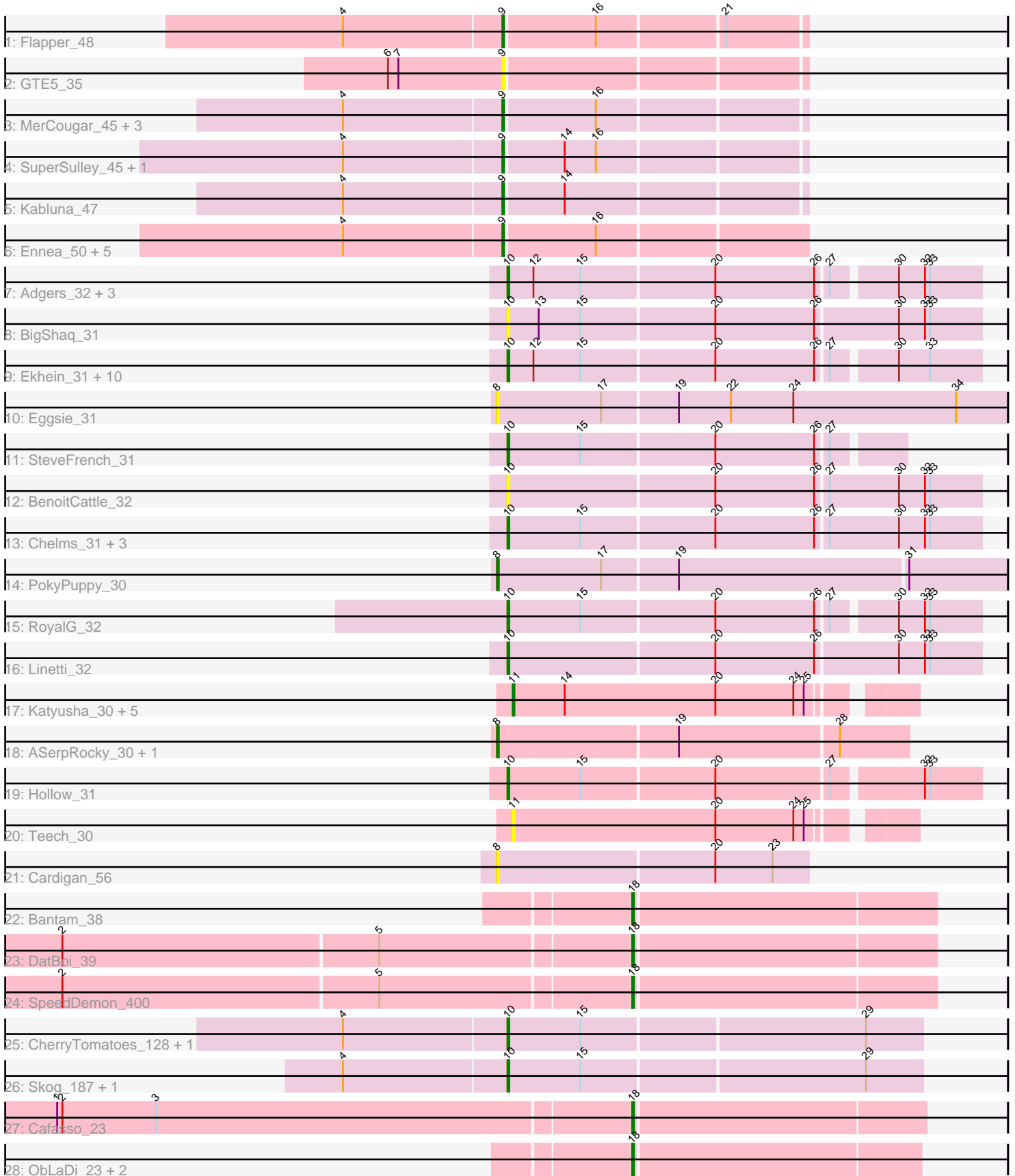


Pham 157865



Note: Tracks are now grouped by subcluster and scaled. Switching in subcluster is indicated by changes in track color. Track scale is now set by default to display the region 30 bp upstream of start 1 to 30 bp downstream of the last possible start. If this default region is judged to be packed too tightly with annotated starts, the track will be further scaled to only show that region of the ORF with annotated starts. This action will be indicated by adding "Zoomed" to the title. For starts, yellow indicates the location of called starts comprised solely of Glimmer/GeneMark auto-annotations, green indicates the location of called starts with at least 1 manual gene annotation.

Pham 157865 Report

This analysis was run 04/13/24 on database version 558.

Pham number 157865 has 63 members, 11 are drafts.

Phages represented in each track:

- Track 1 : Flapper_48
- Track 2 : GTE5_35
- Track 3 : MerCougar_45, NosilaM_47, StarStruck_45, Outis_45
- Track 4 : SuperSulley_45, Buggaboo_45
- Track 5 : Kabluna_47
- Track 6 : Ennea_50, Lollipop1437_49, Bonum_47, Float294_46, Patio_47, Skysand_46
- Track 7 : Adgers_32, Barbochs_31, CathyBurgh_30, Lizzo_31
- Track 8 : BigShaq_31
- Track 9 : Ekhein_31, Flakey_31, Exiguo_31, Squibbles_30, RemRem_32, Breezic_31, Monty_30, Gorko_31, Hotorobo_31, Sam12_31, GourdThymes_31
- Track 10 : Eggsie_31
- Track 11 : SteveFrench_31
- Track 12 : BenoitCattle_32
- Track 13 : Chelms_31, Sombrero_31, PierreThree_31, Dakiti_31
- Track 14 : PokyPuppy_30
- Track 15 : RoyalG_32
- Track 16 : Linetti_32
- Track 17 : Katyusha_30, Benczkowski14_30, Kvothe_30, Teatealatte_30, Tredge_30, Niagara_30
- Track 18 : ASerpRocky_30, Demosthenes_30
- Track 19 : Hollow_31
- Track 20 : Teech_30
- Track 21 : Cardigan_56
- Track 22 : Bantam_38
- Track 23 : DatBoi_39
- Track 24 : SpeedDemon_400
- Track 25 : CherryTomatoes_128, SCentae_124
- Track 26 : Skog_187, Pupper_125
- Track 27 : Cafasso_23
- Track 28 : ObLaDi_23, Aleemily_22, ModicumRichard_23

Summary of Final Annotations (See graph section above for start numbers):

The start number called the most often in the published annotations is 10, it was called in 23 of the 52 non-draft genes in the pham.

Genes that call this "Most Annotated" start:

- Adgers_32, Barbochs_31, BenoitCattle_32, BigShaq_31, Breezic_31, CathyBurgh_30, Chelms_31, CherryTomatoes_128, Dakiti_31, Ekhein_31, Exiguo_31, Flakey_31, Gorko_31, GourdThymes_31, Hollow_31, Hotorobo_31, Linetti_32, Lizzo_31, Monty_30, PierreThree_31, Pupper_125, RemRem_32, RoyalG_32, SCentae_124, Sam12_31, Skog_187, Sombrero_31, Squibbles_30, SteveFrench_31,

Genes that have the "Most Annotated" start but do not call it:

-

Genes that do not have the "Most Annotated" start:

- ASerpRocky_30, Aleemily_22, Bantam_38, Benczkowski14_30, Bonum_47, Buggaboo_45, Cafasso_23, Cardigan_56, DatBoi_39, Demosthenes_30, Eggsie_31, Ennea_50, Flapper_48, Float294_46, GTE5_35, Kabluna_47, Katyusha_30, Kvothe_30, Lollipop1437_49, MerCougar_45, ModicumRichard_23, Niagara_30, NosilaM_47, ObLaDi_23, Outis_45, Patio_47, PokyPuppy_30, Skysand_46, SpeedDemon_400, StarStruck_45, SuperSulley_45, Teatealatte_30, Teech_30, Tredge_30,

Summary by start number:

Start 8:

- Found in 5 of 63 (7.9%) of genes in pham
- Manual Annotations of this start: 3 of 52
- Called 100.0% of time when present
- Phage (with cluster) where this start called: ASerpRocky_30 (CS4), Cardigan_56 (DD), Demosthenes_30 (CS4), Eggsie_31 (CS2), PokyPuppy_30 (CS2),

Start 9:

- Found in 15 of 63 (23.8%) of genes in pham
- Manual Annotations of this start: 14 of 52
- Called 100.0% of time when present
- Phage (with cluster) where this start called: Bonum_47 (CR2), Buggaboo_45 (CR2), Ennea_50 (CR3), Flapper_48 (CR1), Float294_46 (CR3), GTE5_35 (CR1), Kabluna_47 (CR2), Lollipop1437_49 (CR3), MerCougar_45 (CR2), NosilaM_47 (CR2), Outis_45 (CR2), Patio_47 (CR3), Skysand_46 (CR3), StarStruck_45 (CR2), SuperSulley_45 (CR2),

Start 10:

- Found in 29 of 63 (46.0%) of genes in pham
- Manual Annotations of this start: 23 of 52
- Called 100.0% of time when present
- Phage (with cluster) where this start called: Adgers_32 (CS2), Barbochs_31 (CS2), BenoitCattle_32 (CS2), BigShaq_31 (CS2), Breezic_31 (CS2), CathyBurgh_30 (CS2), Chelms_31 (CS2), CherryTomatoes_128 (DO), Dakiti_31 (CS2), Ekhein_31 (CS2), Exiguo_31 (CS2), Flakey_31 (CS2), Gorko_31 (CS2), GourdThymes_31 (CS2), Hollow_31 (CS4), Hotorobo_31 (CS2), Linetti_32 (CS2), Lizzo_31 (CS2), Monty_30 (CS2), PierreThree_31 (CS2), Pupper_125 (DO), RemRem_32 (CS2), RoyalG_32 (CS2), SCentae_124 (DO), Sam12_31 (CS2), Skog_187 (DO),

Sombrero_31 (CS2), Squibbles_30 (CS2), SteveFrench_31 (CS2),

Start 11:

- Found in 7 of 63 (11.1%) of genes in pham
- Manual Annotations of this start: 6 of 52
- Called 100.0% of time when present
- Phage (with cluster) where this start called: Benczkowski14_30 (CS4), Katyusha_30 (CS4), Kvothe_30 (CS4), Niagara_30 (CS4), Teatealatte_30 (CS4), Teech_30 (CS4), Tredge_30 (CS4),

Start 18:

- Found in 7 of 63 (11.1%) of genes in pham
- Manual Annotations of this start: 6 of 52
- Called 100.0% of time when present
- Phage (with cluster) where this start called: Aleemily_22 (DZ), Bantam_38 (DL), Cafasso_23 (DZ), DatBoi_39 (DL), ModicumRichard_23 (DZ), ObLaDi_23 (DZ), SpeedDemon_400 (DL),

Summary by clusters:

There are 9 clusters represented in this pham: CR2, CR3, DL, CR1, DO, DD, DZ, CS4, CS2,

Info for manual annotations of cluster CR1:

- Start number 9 was manually annotated 1 time for cluster CR1.

Info for manual annotations of cluster CR2:

- Start number 9 was manually annotated 8 times for cluster CR2.

Info for manual annotations of cluster CR3:

- Start number 9 was manually annotated 5 times for cluster CR3.

Info for manual annotations of cluster CS2:

- Start number 8 was manually annotated 1 time for cluster CS2.
- Start number 10 was manually annotated 19 times for cluster CS2.

Info for manual annotations of cluster CS4:

- Start number 8 was manually annotated 2 times for cluster CS4.
- Start number 10 was manually annotated 1 time for cluster CS4.
- Start number 11 was manually annotated 6 times for cluster CS4.

Info for manual annotations of cluster DL:

- Start number 18 was manually annotated 3 times for cluster DL.

Info for manual annotations of cluster DO:

- Start number 10 was manually annotated 3 times for cluster DO.

Info for manual annotations of cluster DZ:

- Start number 18 was manually annotated 3 times for cluster DZ.

Gene Information:

Gene: ASerpRocky_30 Start: 38766, Stop: 38996, Start Num: 8

Candidate Starts for ASerpRocky_30:

(Start: 8 @38766 has 3 MA's), (19, 38868), (28, 38958),

Gene: Adgers_32 Start: 37251, Stop: 37511, Start Num: 10

Candidate Starts for Adgers_32:

(Start: 10 @37251 has 23 MA's), (12, 37266), (15, 37293), (20, 37368), (26, 37425), (27, 37431), (30, 37464), (32, 37479), (33, 37482),

Gene: Aleemily_22 Start: 20882, Stop: 21043, Start Num: 18

Candidate Starts for Aleemily_22:

(Start: 18 @20882 has 6 MA's),

Gene: Bantam_38 Start: 34680, Stop: 34850, Start Num: 18

Candidate Starts for Bantam_38:

(Start: 18 @34680 has 6 MA's),

Gene: Barbochs_31 Start: 37089, Stop: 37349, Start Num: 10

Candidate Starts for Barbochs_31:

(Start: 10 @37089 has 23 MA's), (12, 37104), (15, 37131), (20, 37206), (26, 37263), (27, 37269), (30, 37302), (32, 37317), (33, 37320),

Gene: Benczkowski14_30 Start: 38816, Stop: 39034, Start Num: 11

Candidate Starts for Benczkowski14_30:

(Start: 11 @38816 has 6 MA's), (14, 38846), (20, 38933), (24, 38978), (25, 38984),

Gene: BenoitCattle_32 Start: 37186, Stop: 37452, Start Num: 10

Candidate Starts for BenoitCattle_32:

(Start: 10 @37186 has 23 MA's), (20, 37303), (26, 37360), (27, 37366), (30, 37405), (32, 37420), (33, 37423),

Gene: BigShaq_31 Start: 37191, Stop: 37457, Start Num: 10

Candidate Starts for BigShaq_31:

(Start: 10 @37191 has 23 MA's), (13, 37209), (15, 37233), (20, 37308), (26, 37365), (30, 37410), (32, 37425), (33, 37428),

Gene: Bonum_47 Start: 35475, Stop: 35639, Start Num: 9

Candidate Starts for Bonum_47:

(4, 35385), (Start: 9 @35475 has 14 MA's), (16, 35526),

Gene: Breezic_31 Start: 37103, Stop: 37363, Start Num: 10

Candidate Starts for Breezic_31:

(Start: 10 @37103 has 23 MA's), (12, 37118), (15, 37145), (20, 37220), (26, 37277), (27, 37283), (30, 37316), (33, 37334),

Gene: Buggaboo_45 Start: 35954, Stop: 36118, Start Num: 9

Candidate Starts for Buggaboo_45:

(4, 35864), (Start: 9 @35954 has 14 MA's), (14, 35987), (16, 36005),

Gene: Cafasso_23 Start: 21455, Stop: 21619, Start Num: 18

Candidate Starts for Cafasso_23:

(1, 21128), (2, 21131), (3, 21185), (Start: 18 @21455 has 6 MA's),

Gene: Cardigan_56 Start: 40897, Stop: 41073, Start Num: 8

Candidate Starts for Cardigan_56:

(Start: 8 @40897 has 3 MA's), (20, 41020), (23, 41053),

Gene: CathyBurgh_30 Start: 37957, Stop: 38217, Start Num: 10

Candidate Starts for CathyBurgh_30:

(Start: 10 @37957 has 23 MA's), (12, 37972), (15, 37999), (20, 38074), (26, 38131), (27, 38137), (30, 38170), (32, 38185), (33, 38188),

Gene: Chelms_31 Start: 37194, Stop: 37460, Start Num: 10

Candidate Starts for Chelms_31:

(Start: 10 @37194 has 23 MA's), (15, 37236), (20, 37311), (26, 37368), (27, 37374), (30, 37413), (32, 37428), (33, 37431),

Gene: CherryTomatoes_128 Start: 82121, Stop: 82354, Start Num: 10

Candidate Starts for CherryTomatoes_128:

(4, 82028), (Start: 10 @82121 has 23 MA's), (15, 82163), (29, 82322),

Gene: Dakiti_31 Start: 38062, Stop: 38328, Start Num: 10

Candidate Starts for Dakiti_31:

(Start: 10 @38062 has 23 MA's), (15, 38104), (20, 38179), (26, 38236), (27, 38242), (30, 38281), (32, 38296), (33, 38299),

Gene: DatBoi_39 Start: 35338, Stop: 35508, Start Num: 18

Candidate Starts for DatBoi_39:

(2, 35017), (5, 35197), (Start: 18 @35338 has 6 MA's),

Gene: Demosthenes_30 Start: 38739, Stop: 38969, Start Num: 8

Candidate Starts for Demosthenes_30:

(Start: 8 @38739 has 3 MA's), (19, 38841), (28, 38931),

Gene: Eggsie_31 Start: 37210, Stop: 37500, Start Num: 8

Candidate Starts for Eggsie_31:

(Start: 8 @37210 has 3 MA's), (17, 37270), (19, 37312), (22, 37342), (24, 37378), (34, 37471),

Gene: Ekhein_31 Start: 37085, Stop: 37345, Start Num: 10

Candidate Starts for Ekhein_31:

(Start: 10 @37085 has 23 MA's), (12, 37100), (15, 37127), (20, 37202), (26, 37259), (27, 37265), (30, 37298), (33, 37316),

Gene: Ennea_50 Start: 36803, Stop: 36970, Start Num: 9

Candidate Starts for Ennea_50:

(4, 36713), (Start: 9 @36803 has 14 MA's), (16, 36854),

Gene: Exiguo_31 Start: 37097, Stop: 37357, Start Num: 10

Candidate Starts for Exiguo_31:

(Start: 10 @37097 has 23 MA's), (12, 37112), (15, 37139), (20, 37214), (26, 37271), (27, 37277), (30, 37310), (33, 37328),

Gene: Flakey_31 Start: 37961, Stop: 38221, Start Num: 10

Candidate Starts for Flakey_31:

(Start: 10 @37961 has 23 MA's), (12, 37976), (15, 38003), (20, 38078), (26, 38135), (27, 38141), (30, 38174), (33, 38192),

Gene: Flapper_48 Start: 36518, Stop: 36682, Start Num: 9

Candidate Starts for Flapper_48:

(4, 36428), (Start: 9 @36518 has 14 MA's), (16, 36569), (21, 36638),

Gene: Float294_46 Start: 36245, Stop: 36412, Start Num: 9

Candidate Starts for Float294_46:

(4, 36155), (Start: 9 @36245 has 14 MA's), (16, 36296),

Gene: GTE5_35 Start: 29375, Stop: 29539, Start Num: 9

Candidate Starts for GTE5_35:

(6, 29309), (7, 29315), (Start: 9 @29375 has 14 MA's),

Gene: Gorko_31 Start: 37089, Stop: 37349, Start Num: 10

Candidate Starts for Gorko_31:

(Start: 10 @37089 has 23 MA's), (12, 37104), (15, 37131), (20, 37206), (26, 37263), (27, 37269), (30, 37302), (33, 37320),

Gene: GourdThymes_31 Start: 37963, Stop: 38223, Start Num: 10

Candidate Starts for GourdThymes_31:

(Start: 10 @37963 has 23 MA's), (12, 37978), (15, 38005), (20, 38080), (26, 38137), (27, 38143), (30, 38176), (33, 38194),

Gene: Hollow_31 Start: 39132, Stop: 39392, Start Num: 10

Candidate Starts for Hollow_31:

(Start: 10 @39132 has 23 MA's), (15, 39174), (20, 39249), (27, 39312), (32, 39360), (33, 39363),

Gene: Hotorobo_31 Start: 37968, Stop: 38228, Start Num: 10

Candidate Starts for Hotorobo_31:

(Start: 10 @37968 has 23 MA's), (12, 37983), (15, 38010), (20, 38085), (26, 38142), (27, 38148), (30, 38181), (33, 38199),

Gene: Kabluna_47 Start: 34890, Stop: 35054, Start Num: 9

Candidate Starts for Kabluna_47:

(4, 34800), (Start: 9 @34890 has 14 MA's), (14, 34923),

Gene: Katyusha_30 Start: 38816, Stop: 39034, Start Num: 11

Candidate Starts for Katyusha_30:

(Start: 11 @38816 has 6 MA's), (14, 38846), (20, 38933), (24, 38978), (25, 38984),

Gene: Kvothe_30 Start: 38715, Stop: 38933, Start Num: 11

Candidate Starts for Kvothe_30:

(Start: 11 @38715 has 6 MA's), (14, 38745), (20, 38832), (24, 38877), (25, 38883),

Gene: Linetti_32 Start: 38188, Stop: 38454, Start Num: 10

Candidate Starts for Linetti_32:

(Start: 10 @38188 has 23 MA's), (20, 38305), (26, 38362), (30, 38407), (32, 38422), (33, 38425),

Gene: Lizzo_31 Start: 37957, Stop: 38217, Start Num: 10

Candidate Starts for Lizzo_31:

(Start: 10 @37957 has 23 MA's), (12, 37972), (15, 37999), (20, 38074), (26, 38131), (27, 38137), (30, 38170), (32, 38185), (33, 38188),

Gene: Lollipop1437_49 Start: 36791, Stop: 36958, Start Num: 9
Candidate Starts for Lollipop1437_49:
(4, 36701), (Start: 9 @36791 has 14 MA's), (16, 36842),

Gene: MerCougar_45 Start: 36074, Stop: 36238, Start Num: 9
Candidate Starts for MerCougar_45:
(4, 35984), (Start: 9 @36074 has 14 MA's), (16, 36125),

Gene: ModicumRichard_23 Start: 21455, Stop: 21619, Start Num: 18
Candidate Starts for ModicumRichard_23:
(Start: 18 @21455 has 6 MA's),

Gene: Monty_30 Start: 37107, Stop: 37367, Start Num: 10
Candidate Starts for Monty_30:
(Start: 10 @37107 has 23 MA's), (12, 37122), (15, 37149), (20, 37224), (26, 37281), (27, 37287), (30, 37320), (33, 37338),

Gene: Niagara_30 Start: 38773, Stop: 38991, Start Num: 11
Candidate Starts for Niagara_30:
(Start: 11 @38773 has 6 MA's), (14, 38803), (20, 38890), (24, 38935), (25, 38941),

Gene: NosilaM_47 Start: 35787, Stop: 35951, Start Num: 9
Candidate Starts for NosilaM_47:
(4, 35697), (Start: 9 @35787 has 14 MA's), (16, 35838),

Gene: ObLaDi_23 Start: 21434, Stop: 21595, Start Num: 18
Candidate Starts for ObLaDi_23:
(Start: 18 @21434 has 6 MA's),

Gene: Outis_45 Start: 35768, Stop: 35932, Start Num: 9
Candidate Starts for Outis_45:
(4, 35678), (Start: 9 @35768 has 14 MA's), (16, 35819),

Gene: Patio_47 Start: 36027, Stop: 36194, Start Num: 9
Candidate Starts for Patio_47:
(4, 35937), (Start: 9 @36027 has 14 MA's), (16, 36078),

Gene: PierreThree_31 Start: 38059, Stop: 38325, Start Num: 10
Candidate Starts for PierreThree_31:
(Start: 10 @38059 has 23 MA's), (15, 38101), (20, 38176), (26, 38233), (27, 38239), (30, 38278), (32, 38293), (33, 38296),

Gene: PokyPuppy_30 Start: 37985, Stop: 38272, Start Num: 8
Candidate Starts for PokyPuppy_30:
(Start: 8 @37985 has 3 MA's), (17, 38045), (19, 38087), (31, 38216),

Gene: Pupper_125 Start: 82970, Stop: 83203, Start Num: 10
Candidate Starts for Pupper_125:
(4, 82877), (Start: 10 @82970 has 23 MA's), (15, 83012), (29, 83171),

Gene: RemRem_32 Start: 37097, Stop: 37357, Start Num: 10
Candidate Starts for RemRem_32:
(Start: 10 @37097 has 23 MA's), (12, 37112), (15, 37139), (20, 37214), (26, 37271), (27, 37277), (30, 37310), (33, 37328),

Gene: RoyalG_32 Start: 37579, Stop: 37839, Start Num: 10
Candidate Starts for RoyalG_32:
(Start: 10 @37579 has 23 MA's), (15, 37621), (20, 37696), (26, 37753), (27, 37759), (30, 37792), (32, 37807), (33, 37810),

Gene: SCentae_124 Start: 83123, Stop: 83356, Start Num: 10
Candidate Starts for SCentae_124:
(4, 83030), (Start: 10 @83123 has 23 MA's), (15, 83165), (29, 83324),

Gene: Sam12_31 Start: 37097, Stop: 37357, Start Num: 10
Candidate Starts for Sam12_31:
(Start: 10 @37097 has 23 MA's), (12, 37112), (15, 37139), (20, 37214), (26, 37271), (27, 37277), (30, 37310), (33, 37328),

Gene: Skog_187 Start: 112853, Stop: 113086, Start Num: 10
Candidate Starts for Skog_187:
(4, 112760), (Start: 10 @112853 has 23 MA's), (15, 112895), (29, 113054),

Gene: Skysand_46 Start: 36247, Stop: 36414, Start Num: 9
Candidate Starts for Skysand_46:
(4, 36157), (Start: 9 @36247 has 14 MA's), (16, 36298),

Gene: Sombrero_31 Start: 37099, Stop: 37359, Start Num: 10
Candidate Starts for Sombrero_31:
(Start: 10 @37099 has 23 MA's), (15, 37141), (20, 37216), (26, 37273), (27, 37279), (30, 37312), (32, 37327), (33, 37330),

Gene: SpeedDemon_400 Start: 36457, Stop: 36627, Start Num: 18
Candidate Starts for SpeedDemon_400:
(2, 36136), (5, 36316), (Start: 18 @36457 has 6 MA's),

Gene: Squibbles_30 Start: 37960, Stop: 38220, Start Num: 10
Candidate Starts for Squibbles_30:
(Start: 10 @37960 has 23 MA's), (12, 37975), (15, 38002), (20, 38077), (26, 38134), (27, 38140), (30, 38173), (33, 38191),

Gene: StarStruck_45 Start: 35768, Stop: 35932, Start Num: 9
Candidate Starts for StarStruck_45:
(4, 35678), (Start: 9 @35768 has 14 MA's), (16, 35819),

Gene: SteveFrench_31 Start: 37818, Stop: 38036, Start Num: 10
Candidate Starts for SteveFrench_31:
(Start: 10 @37818 has 23 MA's), (15, 37860), (20, 37935), (26, 37992), (27, 37998),

Gene: SuperSulley_45 Start: 35954, Stop: 36118, Start Num: 9
Candidate Starts for SuperSulley_45:
(4, 35864), (Start: 9 @35954 has 14 MA's), (14, 35987), (16, 36005),

Gene: Teatealatte_30 Start: 38718, Stop: 38936, Start Num: 11

Candidate Starts for Teatealatte_30:

(Start: 11 @38718 has 6 MA's), (14, 38748), (20, 38835), (24, 38880), (25, 38886),

Gene: Teech_30 Start: 38519, Stop: 38737, Start Num: 11

Candidate Starts for Teech_30:

(Start: 11 @38519 has 6 MA's), (20, 38636), (24, 38681), (25, 38687),

Gene: Tredge_30 Start: 38718, Stop: 38936, Start Num: 11

Candidate Starts for Tredge_30:

(Start: 11 @38718 has 6 MA's), (14, 38748), (20, 38835), (24, 38880), (25, 38886),