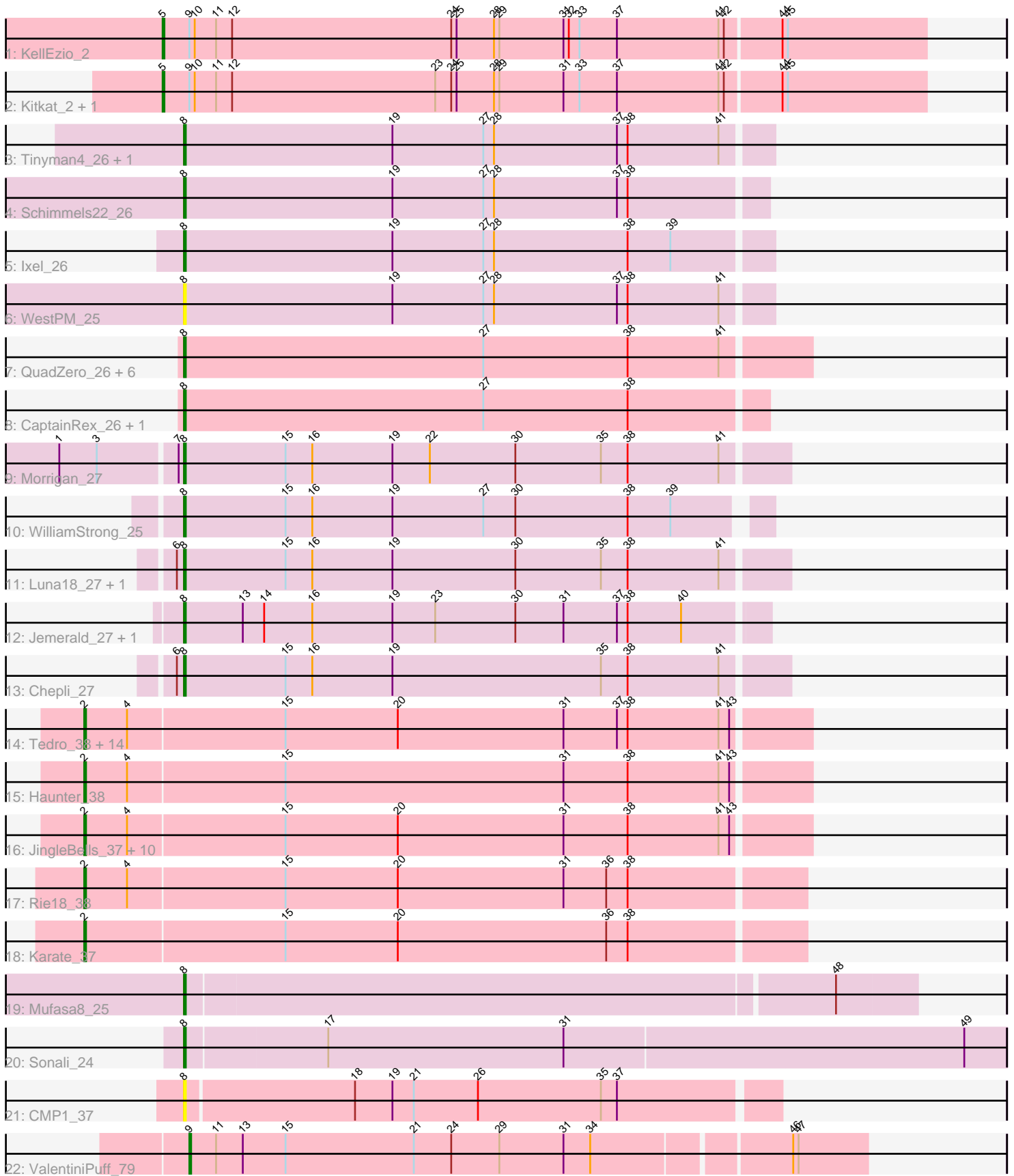


Pham 157891



Note: Tracks are now grouped by subcluster and scaled. Switching in subcluster is indicated by changes in track color. Track scale is now set by default to display the region 30 bp upstream of start 1 to 30 bp downstream of the last possible start. If this default region is judged to be packed too tightly with annotated starts, the track will be further scaled to only show that region of the ORF with annotated starts. This action will be indicated by adding "Zoomed" to the title. For starts, yellow indicates the location of called starts comprised solely of Glimmer/GeneMark auto-annotations, green indicates the location of called starts with at least 1 manual gene annotation.

Pham 157891 Report

This analysis was run 04/13/24 on database version 558.

Pham number 157891 has 57 members, 12 are drafts.

Phages represented in each track:

- Track 1 : KelleEzio_2
- Track 2 : Kitkat_2, BeatusComedenti_2
- Track 3 : Tinyman4_26, HerculesXL_26
- Track 4 : Schimmels22_26
- Track 5 : Ixel_26
- Track 6 : WestPM_25
- Track 7 : QuadZero_26, Hasitha_26, Zayuliv_26, GreenIvy_27, LilTerminator_27, Fulton_27, Zepp_27
- Track 8 : CaptainRex_26, Librie_26
- Track 9 : Morrigan_27
- Track 10 : WilliamStrong_25
- Track 11 : Luna18_27, KatChan_27
- Track 12 : Jemerald_27, Juicer_27
- Track 13 : Chepli_27
- Track 14 : Tedro_38, OverHedge_39, Neptune_38, CoolCookie_43, Cybele_38, Snakehole_38, AnnaSerena_38, NarutoRun_38, Pharpay_38, Gilda_38, PhunaPhoke_38, Krampus_38, Anakin_38, Potty_38, Rachella_38
- Track 15 : Haunter_38
- Track 16 : JingleBells_37, Kate_38, Crestdrop_38, Hiddenleaf_37, JDawG_37, FreddieHg_37, MortySmith_36, Aesir_37, Chivey_37, Poultruss_38, DannyDe_37
- Track 17 : Rie18_38
- Track 18 : Karate_37
- Track 19 : Mufasa8_25
- Track 20 : Sonali_24
- Track 21 : CMP1_37
- Track 22 : ValentiniPuff_79

Summary of Final Annotations (See graph section above for start numbers):

The start number called the most often in the published annotations is 2, it was called in 22 of the 45 non-draft genes in the pham.

Genes that call this "Most Annotated" start:

- Aesir_37, Anakin_38, AnnaSerena_38, Chivey_37, CoolCookie_43, Crestdrop_38, Cybele_38, DannyDe_37, FreddieHg_37, Gilda_38, Haunter_38, Hiddenleaf_37, JDawG_37, JingleBells_37, Karate_37, Kate_38, Krampus_38, MortySmith_36, NarutoRun_38, Neptune_38, OverHedge_39, Pharpay_38, PhunaPhoke_38, Potty_38, Poultruss_38, Rachella_38, Rie18_38, Snakehole_38, Tedro_38,

Genes that have the "Most Annotated" start but do not call it:

-

Genes that do not have the "Most Annotated" start:

- BeatusComedenti_2, CMP1_37, CaptainRex_26, Chepli_27, Fulton_27, Greenlvy_27, Hasitha_26, HerculesXL_26, Ixel_26, Jemerald_27, Juicer_27, KatChan_27, KellEzio_2, Kitkat_2, Librie_26, LilTerminator_27, Luna18_27, Morrigan_27, Mufasa8_25, QuadZero_26, Schimmels22_26, Sonali_24, Tinyman4_26, ValentiniPuff_79, WestPM_25, WilliamStrong_25, Zayuliv_26, Zepp_27,

Summary by start number:

Start 2:

- Found in 29 of 57 (50.9%) of genes in pham
- Manual Annotations of this start: 22 of 45
- Called 100.0% of time when present
- Phage (with cluster) where this start called: Aesir_37 (EF), Anakin_38 (EF), AnnaSerena_38 (EF), Chivey_37 (EF), CoolCookie_43 (EF), Crestdrop_38 (EF), Cybele_38 (EF), DannyDe_37 (EF), FreddieHg_37 (EF), Gilda_38 (EF), Haunter_38 (EF), Hiddenleaf_37 (EF), JDawG_37 (EF), JingleBells_37 (EF), Karate_37 (EF), Kate_38 (EF), Krampus_38 (EF), MortySmith_36 (EF), NarutoRun_38 (EF), Neptune_38 (EF), OverHedge_39 (EF), Pharpay_38 (EF), PhunaPhoke_38 (EF), Potty_38 (EF), Poultruss_38 (EF), Rachella_38 (EF), Rie18_38 (EF), Snakehole_38 (EF), Tedro_38 (EF),

Start 5:

- Found in 3 of 57 (5.3%) of genes in pham
- Manual Annotations of this start: 3 of 45
- Called 100.0% of time when present
- Phage (with cluster) where this start called: BeatusComedenti_2 (AT), KellEzio_2 (AT), Kitkat_2 (AT),

Start 8:

- Found in 24 of 57 (42.1%) of genes in pham
- Manual Annotations of this start: 19 of 45
- Called 100.0% of time when present
- Phage (with cluster) where this start called: CMP1_37 (singleton), CaptainRex_26 (EA5), Chepli_27 (EA6), Fulton_27 (EA5), Greenlvy_27 (EA5), Hasitha_26 (EA5), HerculesXL_26 (EA11), Ixel_26 (EA11), Jemerald_27 (EA6), Juicer_27 (EA6), KatChan_27 (EA6), Librie_26 (EA5), LilTerminator_27 (EA5), Luna18_27 (EA6), Morrigan_27 (EA6), Mufasa8_25 (FG), QuadZero_26 (EA5), Schimmels22_26 (EA11), Sonali_24 (FG), Tinyman4_26 (EA11), WestPM_25 (EA11), WilliamStrong_25 (EA6), Zayuliv_26 (EA5), Zepp_27 (EA5),

Start 9:

- Found in 4 of 57 (7.0%) of genes in pham

- Manual Annotations of this start: 1 of 45
- Called 25.0% of time when present
- Phage (with cluster) where this start called: ValentiniPuff_79 (singleton),

Summary by clusters:

There are 7 clusters represented in this pham: singleton, EA11, EF, AT, FG, EA5, EA6,

Info for manual annotations of cluster AT:

- Start number 5 was manually annotated 3 times for cluster AT.

Info for manual annotations of cluster EA11:

- Start number 8 was manually annotated 4 times for cluster EA11.

Info for manual annotations of cluster EA5:

- Start number 8 was manually annotated 6 times for cluster EA5.

Info for manual annotations of cluster EA6:

- Start number 8 was manually annotated 7 times for cluster EA6.

Info for manual annotations of cluster EF:

- Start number 2 was manually annotated 22 times for cluster EF.

Info for manual annotations of cluster FG:

- Start number 8 was manually annotated 2 times for cluster FG.

Gene Information:

Gene: Aesir_37 Start: 24476, Stop: 24877, Start Num: 2

Candidate Starts for Aesir_37:

(Start: 2 @24476 has 22 MA's), (4, 24500), (15, 24587), (20, 24650), (31, 24743), (38, 24779), (41, 24830), (43, 24836),

Gene: Anakin_38 Start: 24796, Stop: 25197, Start Num: 2

Candidate Starts for Anakin_38:

(Start: 2 @24796 has 22 MA's), (4, 24820), (15, 24907), (20, 24970), (31, 25063), (37, 25093), (38, 25099), (41, 25150), (43, 25156),

Gene: AnnaSerena_38 Start: 24831, Stop: 25232, Start Num: 2

Candidate Starts for AnnaSerena_38:

(Start: 2 @24831 has 22 MA's), (4, 24855), (15, 24942), (20, 25005), (31, 25098), (37, 25128), (38, 25134), (41, 25185), (43, 25191),

Gene: BeatusComedenti_2 Start: 788, Stop: 1213, Start Num: 5

Candidate Starts for BeatusComedenti_2:

(Start: 5 @788 has 3 MA's), (Start: 9 @803 has 1 MA's), (10, 806), (11, 818), (12, 827), (23, 941), (24, 950), (25, 953), (28, 974), (29, 977), (31, 1013), (33, 1022), (37, 1043), (41, 1100), (42, 1103), (44, 1133), (45, 1136),

Gene: CMP1_37 Start: 36378, Stop: 36704, Start Num: 8

Candidate Starts for CMP1_37:

(Start: 8 @36378 has 19 MA's), (18, 36471), (19, 36492), (21, 36504), (26, 36540), (35, 36609), (37, 36618),

Gene: CaptainRex_26 Start: 18608, Stop: 18931, Start Num: 8

Candidate Starts for CaptainRex_26:

(Start: 8 @18608 has 19 MA's), (27, 18776), (38, 18857),

Gene: Chepli_27 Start: 19263, Stop: 19598, Start Num: 8

Candidate Starts for Chepli_27:

(6, 19260), (Start: 8 @19263 has 19 MA's), (15, 19320), (16, 19335), (19, 19380), (35, 19497), (38, 19512), (41, 19563),

Gene: Chivey_37 Start: 23887, Stop: 24288, Start Num: 2

Candidate Starts for Chivey_37:

(Start: 2 @23887 has 22 MA's), (4, 23911), (15, 23998), (20, 24061), (31, 24154), (38, 24190), (41, 24241), (43, 24247),

Gene: CoolCookie_43 Start: 24826, Stop: 25227, Start Num: 2

Candidate Starts for CoolCookie_43:

(Start: 2 @24826 has 22 MA's), (4, 24850), (15, 24937), (20, 25000), (31, 25093), (37, 25123), (38, 25129), (41, 25180), (43, 25186),

Gene: Crestdrop_38 Start: 23798, Stop: 24199, Start Num: 2

Candidate Starts for Crestdrop_38:

(Start: 2 @23798 has 22 MA's), (4, 23822), (15, 23909), (20, 23972), (31, 24065), (38, 24101), (41, 24152), (43, 24158),

Gene: Cybele_38 Start: 24796, Stop: 25197, Start Num: 2

Candidate Starts for Cybele_38:

(Start: 2 @24796 has 22 MA's), (4, 24820), (15, 24907), (20, 24970), (31, 25063), (37, 25093), (38, 25099), (41, 25150), (43, 25156),

Gene: DannyDe_37 Start: 23893, Stop: 24294, Start Num: 2

Candidate Starts for DannyDe_37:

(Start: 2 @23893 has 22 MA's), (4, 23917), (15, 24004), (20, 24067), (31, 24160), (38, 24196), (41, 24247), (43, 24253),

Gene: FreddieHg_37 Start: 23903, Stop: 24304, Start Num: 2

Candidate Starts for FreddieHg_37:

(Start: 2 @23903 has 22 MA's), (4, 23927), (15, 24014), (20, 24077), (31, 24170), (38, 24206), (41, 24257), (43, 24263),

Gene: Fulton_27 Start: 18590, Stop: 18937, Start Num: 8

Candidate Starts for Fulton_27:

(Start: 8 @18590 has 19 MA's), (27, 18758), (38, 18839), (41, 18890),

Gene: Gilda_38 Start: 24820, Stop: 25221, Start Num: 2

Candidate Starts for Gilda_38:

(Start: 2 @24820 has 22 MA's), (4, 24844), (15, 24931), (20, 24994), (31, 25087), (37, 25117), (38, 25123), (41, 25174), (43, 25180),

Gene: Greenlvy_27 Start: 19176, Stop: 19523, Start Num: 8

Candidate Starts for GreenIvy_27:

(Start: 8 @19176 has 19 MA's), (27, 19344), (38, 19425), (41, 19476),

Gene: Hasitha_26 Start: 18602, Stop: 18949, Start Num: 8

Candidate Starts for Hasitha_26:

(Start: 8 @18602 has 19 MA's), (27, 18770), (38, 18851), (41, 18902),

Gene: Haunter_38 Start: 24212, Stop: 24613, Start Num: 2

Candidate Starts for Haunter_38:

(Start: 2 @24212 has 22 MA's), (4, 24236), (15, 24323), (31, 24479), (38, 24515), (41, 24566), (43, 24572),

Gene: HerculesXL_26 Start: 18674, Stop: 19000, Start Num: 8

Candidate Starts for HerculesXL_26:

(Start: 8 @18674 has 19 MA's), (19, 18791), (27, 18842), (28, 18848), (37, 18917), (38, 18923), (41, 18974),

Gene: Hiddenleaf_37 Start: 23887, Stop: 24288, Start Num: 2

Candidate Starts for Hiddenleaf_37:

(Start: 2 @23887 has 22 MA's), (4, 23911), (15, 23998), (20, 24061), (31, 24154), (38, 24190), (41, 24241), (43, 24247),

Gene: Ixel_26 Start: 18510, Stop: 18836, Start Num: 8

Candidate Starts for Ixel_26:

(Start: 8 @18510 has 19 MA's), (19, 18627), (27, 18678), (28, 18684), (38, 18759), (39, 18783),

Gene: JDawG_37 Start: 24471, Stop: 24872, Start Num: 2

Candidate Starts for JDawG_37:

(Start: 2 @24471 has 22 MA's), (4, 24495), (15, 24582), (20, 24645), (31, 24738), (38, 24774), (41, 24825), (43, 24831),

Gene: Jemerald_27 Start: 20196, Stop: 20519, Start Num: 8

Candidate Starts for Jemerald_27:

(Start: 8 @20196 has 19 MA's), (13, 20229), (14, 20241), (16, 20268), (19, 20313), (23, 20337), (30, 20382), (31, 20409), (37, 20439), (38, 20445), (40, 20475),

Gene: JingleBells_37 Start: 24008, Stop: 24409, Start Num: 2

Candidate Starts for JingleBells_37:

(Start: 2 @24008 has 22 MA's), (4, 24032), (15, 24119), (20, 24182), (31, 24275), (38, 24311), (41, 24362), (43, 24368),

Gene: Juicer_27 Start: 20196, Stop: 20519, Start Num: 8

Candidate Starts for Juicer_27:

(Start: 8 @20196 has 19 MA's), (13, 20229), (14, 20241), (16, 20268), (19, 20313), (23, 20337), (30, 20382), (31, 20409), (37, 20439), (38, 20445), (40, 20475),

Gene: Karate_37 Start: 24819, Stop: 25217, Start Num: 2

Candidate Starts for Karate_37:

(Start: 2 @24819 has 22 MA's), (15, 24930), (20, 24993), (36, 25110), (38, 25122),

Gene: KatChan_27 Start: 19269, Stop: 19604, Start Num: 8

Candidate Starts for KatChan_27:

(6, 19266), (Start: 8 @19269 has 19 MA's), (15, 19326), (16, 19341), (19, 19386), (30, 19455), (35, 19503), (38, 19518), (41, 19569),

Gene: Kate_38 Start: 24828, Stop: 25229, Start Num: 2

Candidate Starts for Kate_38:

(Start: 2 @24828 has 22 MA's), (4, 24852), (15, 24939), (20, 25002), (31, 25095), (38, 25131), (41, 25182), (43, 25188),

Gene: KellEzio_2 Start: 788, Stop: 1213, Start Num: 5

Candidate Starts for KellEzio_2:

(Start: 5 @788 has 3 MA's), (Start: 9 @803 has 1 MA's), (10, 806), (11, 818), (12, 827), (24, 950), (25, 953), (28, 974), (29, 977), (31, 1013), (32, 1016), (33, 1022), (37, 1043), (41, 1100), (42, 1103), (44, 1133), (45, 1136),

Gene: Kitkat_2 Start: 788, Stop: 1213, Start Num: 5

Candidate Starts for Kitkat_2:

(Start: 5 @788 has 3 MA's), (Start: 9 @803 has 1 MA's), (10, 806), (11, 818), (12, 827), (23, 941), (24, 950), (25, 953), (28, 974), (29, 977), (31, 1013), (33, 1022), (37, 1043), (41, 1100), (42, 1103), (44, 1133), (45, 1136),

Gene: Krampus_38 Start: 24828, Stop: 25229, Start Num: 2

Candidate Starts for Krampus_38:

(Start: 2 @24828 has 22 MA's), (4, 24852), (15, 24939), (20, 25002), (31, 25095), (37, 25125), (38, 25131), (41, 25182), (43, 25188),

Gene: Librie_26 Start: 18608, Stop: 18931, Start Num: 8

Candidate Starts for Librie_26:

(Start: 8 @18608 has 19 MA's), (27, 18776), (38, 18857),

Gene: LilTerminator_27 Start: 18608, Stop: 18955, Start Num: 8

Candidate Starts for LilTerminator_27:

(Start: 8 @18608 has 19 MA's), (27, 18776), (38, 18857), (41, 18908),

Gene: Luna18_27 Start: 19269, Stop: 19604, Start Num: 8

Candidate Starts for Luna18_27:

(6, 19266), (Start: 8 @19269 has 19 MA's), (15, 19326), (16, 19341), (19, 19386), (30, 19455), (35, 19503), (38, 19518), (41, 19569),

Gene: Morrigan_27 Start: 20156, Stop: 20491, Start Num: 8

Candidate Starts for Morrigan_27:

(1, 20090), (3, 20111), (7, 20153), (Start: 8 @20156 has 19 MA's), (15, 20213), (16, 20228), (19, 20273), (22, 20294), (30, 20342), (35, 20390), (38, 20405), (41, 20456),

Gene: MortySmith_36 Start: 23859, Stop: 24260, Start Num: 2

Candidate Starts for MortySmith_36:

(Start: 2 @23859 has 22 MA's), (4, 23883), (15, 23970), (20, 24033), (31, 24126), (38, 24162), (41, 24213), (43, 24219),

Gene: Mufasa8_25 Start: 23961, Stop: 24362, Start Num: 8

Candidate Starts for Mufasa8_25:

(Start: 8 @23961 has 19 MA's), (48, 24318),

Gene: NarutoRun_38 Start: 24796, Stop: 25197, Start Num: 2

Candidate Starts for NarutoRun_38:

(Start: 2 @24796 has 22 MA's), (4, 24820), (15, 24907), (20, 24970), (31, 25063), (37, 25093), (38, 25099), (41, 25150), (43, 25156),

Gene: Neptune_38 Start: 24796, Stop: 25197, Start Num: 2

Candidate Starts for Neptune_38:

(Start: 2 @24796 has 22 MA's), (4, 24820), (15, 24907), (20, 24970), (31, 25063), (37, 25093), (38, 25099), (41, 25150), (43, 25156),

Gene: OverHedge_39 Start: 24786, Stop: 25187, Start Num: 2

Candidate Starts for OverHedge_39:

(Start: 2 @24786 has 22 MA's), (4, 24810), (15, 24897), (20, 24960), (31, 25053), (37, 25083), (38, 25089), (41, 25140), (43, 25146),

Gene: Pharpay_38 Start: 24841, Stop: 25242, Start Num: 2

Candidate Starts for Pharpay_38:

(Start: 2 @24841 has 22 MA's), (4, 24865), (15, 24952), (20, 25015), (31, 25108), (37, 25138), (38, 25144), (41, 25195), (43, 25201),

Gene: PhunaPhoke_38 Start: 24814, Stop: 25215, Start Num: 2

Candidate Starts for PhunaPhoke_38:

(Start: 2 @24814 has 22 MA's), (4, 24838), (15, 24925), (20, 24988), (31, 25081), (37, 25111), (38, 25117), (41, 25168), (43, 25174),

Gene: Potty_38 Start: 24819, Stop: 25220, Start Num: 2

Candidate Starts for Potty_38:

(Start: 2 @24819 has 22 MA's), (4, 24843), (15, 24930), (20, 24993), (31, 25086), (37, 25116), (38, 25122), (41, 25173), (43, 25179),

Gene: Poultruss_38 Start: 25165, Stop: 25566, Start Num: 2

Candidate Starts for Poultruss_38:

(Start: 2 @25165 has 22 MA's), (4, 25189), (15, 25276), (20, 25339), (31, 25432), (38, 25468), (41, 25519), (43, 25525),

Gene: QuadZero_26 Start: 18612, Stop: 18959, Start Num: 8

Candidate Starts for QuadZero_26:

(Start: 8 @18612 has 19 MA's), (27, 18780), (38, 18861), (41, 18912),

Gene: Rachella_38 Start: 24822, Stop: 25223, Start Num: 2

Candidate Starts for Rachella_38:

(Start: 2 @24822 has 22 MA's), (4, 24846), (15, 24933), (20, 24996), (31, 25089), (37, 25119), (38, 25125), (41, 25176), (43, 25182),

Gene: Rie18_38 Start: 24311, Stop: 24709, Start Num: 2

Candidate Starts for Rie18_38:

(Start: 2 @24311 has 22 MA's), (4, 24335), (15, 24422), (20, 24485), (31, 24578), (36, 24602), (38, 24614),

Gene: Schimmels22_26 Start: 19037, Stop: 19360, Start Num: 8

Candidate Starts for Schimmels22_26:

(Start: 8 @19037 has 19 MA's), (19, 19154), (27, 19205), (28, 19211), (37, 19280), (38, 19286),

Gene: Snakehole_38 Start: 23999, Stop: 24400, Start Num: 2

Candidate Starts for Snakehole_38:

(Start: 2 @23999 has 22 MA's), (4, 24023), (15, 24110), (20, 24173), (31, 24266), (37, 24296), (38, 24302), (41, 24353), (43, 24359),

Gene: Sonali_24 Start: 24016, Stop: 24471, Start Num: 8

Candidate Starts for Sonali_24:

(Start: 8 @24016 has 19 MA's), (17, 24094), (31, 24226), (49, 24448),

Gene: Tedro_38 Start: 24292, Stop: 24693, Start Num: 2

Candidate Starts for Tedro_38:

(Start: 2 @24292 has 22 MA's), (4, 24316), (15, 24403), (20, 24466), (31, 24559), (37, 24589), (38, 24595), (41, 24646), (43, 24652),

Gene: Tinyman4_26 Start: 18674, Stop: 19000, Start Num: 8

Candidate Starts for Tinyman4_26:

(Start: 8 @18674 has 19 MA's), (19, 18791), (27, 18842), (28, 18848), (37, 18917), (38, 18923), (41, 18974),

Gene: ValentiniPuff_79 Start: 47112, Stop: 47483, Start Num: 9

Candidate Starts for ValentiniPuff_79:

(Start: 9 @47112 has 1 MA's), (11, 47127), (13, 47142), (15, 47166), (21, 47238), (24, 47259), (29, 47286), (31, 47322), (34, 47337), (46, 47442), (47, 47445),

Gene: WestPM_25 Start: 18517, Stop: 18843, Start Num: 8

Candidate Starts for WestPM_25:

(Start: 8 @18517 has 19 MA's), (19, 18634), (27, 18685), (28, 18691), (37, 18760), (38, 18766), (41, 18817),

Gene: WilliamStrong_25 Start: 20264, Stop: 20584, Start Num: 8

Candidate Starts for WilliamStrong_25:

(Start: 8 @20264 has 19 MA's), (15, 20321), (16, 20336), (19, 20381), (27, 20432), (30, 20450), (38, 20513), (39, 20537),

Gene: Zayuliv_26 Start: 19198, Stop: 19545, Start Num: 8

Candidate Starts for Zayuliv_26:

(Start: 8 @19198 has 19 MA's), (27, 19366), (38, 19447), (41, 19498),

Gene: Zepp_27 Start: 18596, Stop: 18943, Start Num: 8

Candidate Starts for Zepp_27:

(Start: 8 @18596 has 19 MA's), (27, 18764), (38, 18845), (41, 18896),