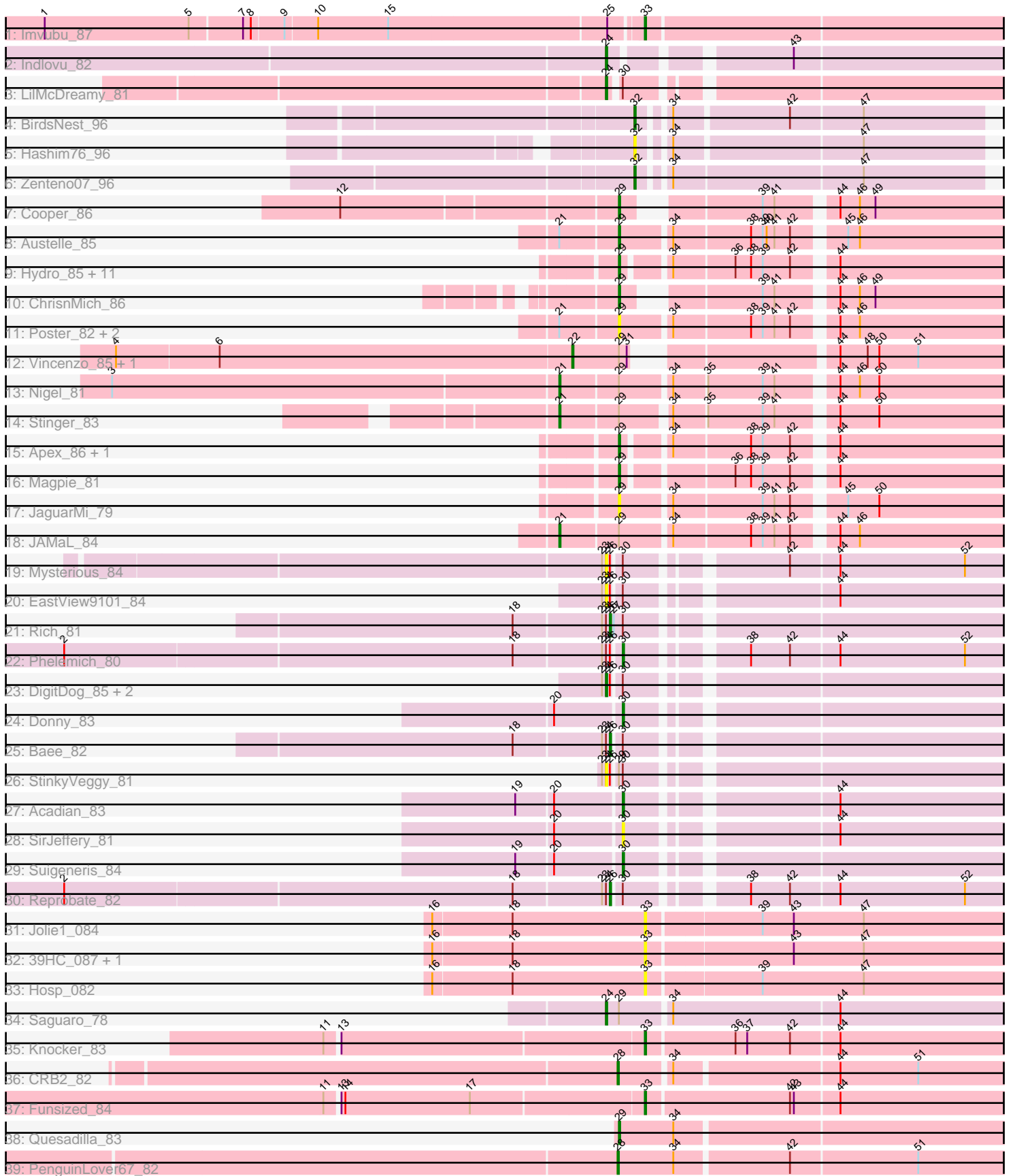


Pham 157894



Note: Tracks are now grouped by subcluster and scaled. Switching in subcluster is indicated by changes in track color. Track scale is now set by default to display the region 30 bp upstream of start 1 to 30 bp downstream of the last possible start. If this default region is judged to be packed too tightly with annotated starts, the track will be further scaled to only show that region of the ORF with annotated starts. This action will be indicated by adding "Zoomed" to the title. For starts, yellow indicates the location of called starts comprised solely of Glimmer/GeneMark auto-annotations, green indicates the location of called starts with at least 1 manual gene annotation.

Pham 157894 Report

This analysis was run 04/13/24 on database version 558.

Pham number 157894 has 57 members, 17 are drafts.

Phages represented in each track:

- Track 1 : Imvubu_87
- Track 2 : Indlovu_82
- Track 3 : LilMcDreamy_81
- Track 4 : BirdsNest_96
- Track 5 : Hashim76_96
- Track 6 : Zenteno07_96
- Track 7 : Cooper_86
- Track 8 : Austelle_85
- Track 9 : Hydro_85, Hangman_85, Mudslide_85, VioletZ_87, Fortunato_83, Frederick_84, Waleliano_84, Mithril_84, RawrgerThat_84, Lolalove_86, Zemanar_84, BrownCNA_86
- Track 10 : ChrisnMich_86
- Track 11 : Poster_82, BobbyK_83, Nanao_83
- Track 12 : Vincenzo_85, AlanGrant_86
- Track 13 : Nigel_81
- Track 14 : Stinger_83
- Track 15 : Apex_86, Prince_84
- Track 16 : Magpie_81
- Track 17 : JaguarMi_79
- Track 18 : JAMaL_84
- Track 19 : Mysterious_84
- Track 20 : EastView9101_84
- Track 21 : Rich_81
- Track 22 : Phelemich_80
- Track 23 : DigitDog_85, Nangang_84, Serendipitous_83
- Track 24 : Donny_83
- Track 25 : Bae_82
- Track 26 : StinkyVeggy_81
- Track 27 : Acadian_83
- Track 28 : SirJeffery_81
- Track 29 : Suigeneris_84
- Track 30 : Reprobate_82
- Track 31 : Jolie1_084
- Track 32 : 39HC_087, 40BC_087
- Track 33 : Hosp_082
- Track 34 : Saguaro_78
- Track 35 : Knocker_83

- Track 36 : CRB2_82
- Track 37 : Funsized_84
- Track 38 : Quesadilla_83
- Track 39 : PenguinLover67_82

Summary of Final Annotations (See graph section above for start numbers):

The start number called the most often in the published annotations is 29, it was called in 17 of the 40 non-draft genes in the pham.

Genes that call this "Most Annotated" start:

- Apex_86, Austelle_85, BobbyK_83, BrownCNA_86, ChrisnMich_86, Cooper_86, Fortunato_83, Frederick_84, Hangman_85, Hydro_85, JaguarMi_79, Lolalove_86, Magpie_81, Mithril_84, Mudslide_85, Nanao_83, Poster_82, Prince_84, Quesadilla_83, RawrgerThat_84, VioletZ_87, Waleliano_84, Zemanar_84,

Genes that have the "Most Annotated" start but do not call it:

- AlanGrant_86, JAMaL_84, Nigel_81, Saguaro_78, Stinger_83, StinkyVeggy_81, Vincenzo_85,

Genes that do not have the "Most Annotated" start:

- 39HC_087, 40BC_087, Acadian_83, Bae_82, BirdsNest_96, CRB2_82, DigitDog_85, Donny_83, EastView9101_84, Funsized_84, Hashim76_96, Hosp_082, Imvubu_87, Indlovu_82, Jolie1_084, Knocker_83, LilMcDreamy_81, Mysterious_84, Nangang_84, PenguinLover67_82, Phelemich_80, Reprobate_82, Rich_81, Serendipitous_83, SirJeffery_81, Suigeneris_84, Zenteno07_96,

Summary by start number:

Start 21:

- Found in 7 of 57 (12.3%) of genes in pham
- Manual Annotations of this start: 3 of 40
- Called 42.9% of time when present
- Phage (with cluster) where this start called: JAMaL_84 (B4), Nigel_81 (B4), Stinger_83 (B4),

Start 22:

- Found in 2 of 57 (3.5%) of genes in pham
- Manual Annotations of this start: 2 of 40
- Called 100.0% of time when present
- Phage (with cluster) where this start called: AlanGrant_86 (B4), Vincenzo_85 (B4),

Start 24:

- Found in 13 of 57 (22.8%) of genes in pham
- Manual Annotations of this start: 4 of 40
- Called 69.2% of time when present
- Phage (with cluster) where this start called: DigitDog_85 (B5), EastView9101_84 (B5), Indlovu_82 (B11), LilMcDreamy_81 (B12), Mysterious_84 (B5), Nangang_84 (B5), Saguaro_78 (B7), Serendipitous_83 (B5), StinkyVeggy_81 (B5),

Start 26:

- Found in 10 of 57 (17.5%) of genes in pham
- Manual Annotations of this start: 3 of 40
- Called 30.0% of time when present
- Phage (with cluster) where this start called: Bae_82 (B5), Reprobate_82 (B5), Rich_81 (B5),

Start 28:

- Found in 2 of 57 (3.5%) of genes in pham
- Manual Annotations of this start: 2 of 40
- Called 100.0% of time when present
- Phage (with cluster) where this start called: CRB2_82 (B9), PenguinLover67_82 (B9),

Start 29:

- Found in 30 of 57 (52.6%) of genes in pham
- Manual Annotations of this start: 17 of 40
- Called 76.7% of time when present
- Phage (with cluster) where this start called: Apex_86 (B4), Austelle_85 (B4), BobbyK_83 (B4), BrownCNA_86 (B4), ChrisnMich_86 (B4), Cooper_86 (B4), Fortunato_83 (B4), Frederick_84 (B4), Hangman_85 (B4), Hydro_85 (B4), JaguarMi_79 (B4), Lolalove_86 (B4), Magpie_81 (B4), Mithril_84 (B4), Mudslide_85 (B4), Nanao_83 (B4), Poster_82 (B4), Prince_84 (B4), Quesadilla_83 (B9), RawrgerThat_84 (B4), VioletZ_87 (B4), Waleliano_84 (B4), Zemanar_84 (B4),

Start 30:

- Found in 15 of 57 (26.3%) of genes in pham
- Manual Annotations of this start: 4 of 40
- Called 33.3% of time when present
- Phage (with cluster) where this start called: Acadian_83 (B5), Donny_83 (B5), Phelemich_80 (B5), SirJeffery_81 (B5), Suigeneris_84 (B5),

Start 32:

- Found in 3 of 57 (5.3%) of genes in pham
- Manual Annotations of this start: 2 of 40
- Called 100.0% of time when present
- Phage (with cluster) where this start called: BirdsNest_96 (B13), Hashim76_96 (B13), Zenteno07_96 (B13),

Start 33:

- Found in 7 of 57 (12.3%) of genes in pham
- Manual Annotations of this start: 3 of 40
- Called 100.0% of time when present
- Phage (with cluster) where this start called: 39HC_087 (B6), 40BC_087 (B6), Funsized_84 (B9), Hosp_082 (B6), Imvubu_87 (B10), Jolie1_084 (B6), Knocker_83 (B9),

Summary by clusters:

There are 9 clusters represented in this pham: B4, B5, B6, B7, B12, B13, B10, B11, B9,

Info for manual annotations of cluster B10:

- Start number 33 was manually annotated 1 time for cluster B10.

Info for manual annotations of cluster B11:

- Start number 24 was manually annotated 1 time for cluster B11.

Info for manual annotations of cluster B12:

- Start number 24 was manually annotated 1 time for cluster B12.

Info for manual annotations of cluster B13:

- Start number 32 was manually annotated 2 times for cluster B13.

Info for manual annotations of cluster B4:

- Start number 21 was manually annotated 3 times for cluster B4.
- Start number 22 was manually annotated 2 times for cluster B4.
- Start number 29 was manually annotated 16 times for cluster B4.

Info for manual annotations of cluster B5:

- Start number 24 was manually annotated 1 time for cluster B5.
- Start number 26 was manually annotated 3 times for cluster B5.
- Start number 30 was manually annotated 4 times for cluster B5.

Info for manual annotations of cluster B7:

- Start number 24 was manually annotated 1 time for cluster B7.

Info for manual annotations of cluster B9:

- Start number 28 was manually annotated 2 times for cluster B9.
- Start number 29 was manually annotated 1 time for cluster B9.
- Start number 33 was manually annotated 2 times for cluster B9.

Gene Information:

Gene: 39HC_087 Start: 65341, Stop: 65051, Start Num: 33

Candidate Starts for 39HC_087:

(16, 65503), (18, 65443), (Start: 33 @65341 has 3 MA's), (43, 65233), (47, 65179),

Gene: 40BC_087 Start: 65341, Stop: 65051, Start Num: 33

Candidate Starts for 40BC_087:

(16, 65503), (18, 65443), (Start: 33 @65341 has 3 MA's), (43, 65233), (47, 65179),

Gene: Acadian_83 Start: 63798, Stop: 63526, Start Num: 30

Candidate Starts for Acadian_83:

(19, 63873), (20, 63846), (Start: 30 @63798 has 4 MA's), (44, 63657),

Gene: AlanGrant_86 Start: 66429, Stop: 66130, Start Num: 22

Candidate Starts for AlanGrant_86:

(4, 66777), (6, 66699), (Start: 22 @66429 has 2 MA's), (Start: 29 @66393 has 17 MA's), (31, 66387), (44, 66264), (48, 66243), (50, 66234), (51, 66204),

Gene: Apex_86 Start: 65693, Stop: 65415, Start Num: 29

Candidate Starts for Apex_86:

(Start: 29 @65693 has 17 MA's), (34, 65663), (38, 65606), (39, 65597), (42, 65576), (44, 65549),

Gene: Austelle_85 Start: 66243, Stop: 65959, Start Num: 29

Candidate Starts for Austelle_85:

(Start: 21 @66285 has 3 MA's), (Start: 29 @66243 has 17 MA's), (34, 66207), (38, 66150), (39, 66141), (40, 66138), (41, 66132), (42, 66120), (45, 66087), (46, 66078),

Gene: Bae_82 Start: 64440, Stop: 64162, Start Num: 26

Candidate Starts for Bae_82:

(18, 64512), (23, 64446), (Start: 24 @64443 has 4 MA's), (Start: 26 @64440 has 3 MA's), (Start: 30 @64434 has 4 MA's),

Gene: BirdsNest_96 Start: 67441, Stop: 67193, Start Num: 32

Candidate Starts for BirdsNest_96:

(Start: 32 @67441 has 2 MA's), (34, 67423), (42, 67339), (47, 67285),

Gene: BobbyK_83 Start: 65215, Stop: 64931, Start Num: 29

Candidate Starts for BobbyK_83:

(Start: 21 @65257 has 3 MA's), (Start: 29 @65215 has 17 MA's), (34, 65179), (38, 65122), (39, 65113), (41, 65104), (42, 65092), (44, 65065), (46, 65050),

Gene: BrownCNA_86 Start: 65641, Stop: 65363, Start Num: 29

Candidate Starts for BrownCNA_86:

(Start: 29 @65641 has 17 MA's), (34, 65611), (36, 65566), (38, 65554), (39, 65545), (42, 65524), (44, 65497),

Gene: CRB2_82 Start: 65913, Stop: 65626, Start Num: 28

Candidate Starts for CRB2_82:

(Start: 28 @65913 has 2 MA's), (34, 65877), (44, 65757), (51, 65697),

Gene: ChrisnMich_86 Start: 64491, Stop: 64228, Start Num: 29

Candidate Starts for ChrisnMich_86:

(Start: 29 @64491 has 17 MA's), (39, 64410), (41, 64401), (44, 64362), (46, 64347), (49, 64335),

Gene: Cooper_86 Start: 64991, Stop: 64728, Start Num: 29

Candidate Starts for Cooper_86:

(12, 65192), (Start: 29 @64991 has 17 MA's), (39, 64910), (41, 64901), (44, 64862), (46, 64847), (49, 64835),

Gene: DigitDog_85 Start: 64306, Stop: 64025, Start Num: 24

Candidate Starts for DigitDog_85:

(23, 64309), (Start: 24 @64306 has 4 MA's), (Start: 26 @64303 has 3 MA's), (Start: 30 @64297 has 4 MA's),

Gene: Donny_83 Start: 63632, Stop: 63360, Start Num: 30

Candidate Starts for Donny_83:

(20, 63680), (Start: 30 @63632 has 4 MA's),

Gene: EastView9101_84 Start: 63551, Stop: 63270, Start Num: 24

Candidate Starts for EastView9101_84:

(23, 63554), (Start: 24 @63551 has 4 MA's), (Start: 26 @63548 has 3 MA's), (Start: 30 @63542 has 4 MA's), (44, 63401),

Gene: Fortunato_83 Start: 65020, Stop: 64742, Start Num: 29
Candidate Starts for Fortunato_83:
(Start: 29 @65020 has 17 MA's), (34, 64990), (36, 64945), (38, 64933), (39, 64924), (42, 64903), (44, 64876),

Gene: Frederick_84 Start: 65507, Stop: 65229, Start Num: 29
Candidate Starts for Frederick_84:
(Start: 29 @65507 has 17 MA's), (34, 65477), (36, 65432), (38, 65420), (39, 65411), (42, 65390), (44, 65363),

Gene: Funsized_84 Start: 66820, Stop: 66524, Start Num: 33
Candidate Starts for Funsized_84:
(11, 67057), (13, 67048), (14, 67045), (17, 66949), (Start: 33 @66820 has 3 MA's), (42, 66712), (43, 66709), (44, 66676),

Gene: Hangman_85 Start: 65719, Stop: 65441, Start Num: 29
Candidate Starts for Hangman_85:
(Start: 29 @65719 has 17 MA's), (34, 65689), (36, 65644), (38, 65632), (39, 65623), (42, 65602), (44, 65575),

Gene: Hashim76_96 Start: 66930, Stop: 66682, Start Num: 32
Candidate Starts for Hashim76_96:
(Start: 32 @66930 has 2 MA's), (34, 66912), (47, 66774),

Gene: Hosp_082 Start: 62629, Stop: 62333, Start Num: 33
Candidate Starts for Hosp_082:
(16, 62791), (18, 62731), (Start: 33 @62629 has 3 MA's), (39, 62545), (47, 62467),

Gene: Hydro_85 Start: 65594, Stop: 65316, Start Num: 29
Candidate Starts for Hydro_85:
(Start: 29 @65594 has 17 MA's), (34, 65564), (36, 65519), (38, 65507), (39, 65498), (42, 65477), (44, 65450),

Gene: Imvubu_87 Start: 64765, Stop: 64490, Start Num: 33
Candidate Starts for Imvubu_87:
(1, 65203), (5, 65092), (7, 65053), (8, 65047), (9, 65023), (10, 64999), (15, 64945), (25, 64783), (Start: 33 @64765 has 3 MA's),

Gene: Indlovu_82 Start: 65227, Stop: 64946, Start Num: 24
Candidate Starts for Indlovu_82:
(Start: 24 @65227 has 4 MA's), (43, 65110),

Gene: JAMaL_84 Start: 65126, Stop: 64800, Start Num: 21
Candidate Starts for JAMaL_84:
(Start: 21 @65126 has 3 MA's), (Start: 29 @65084 has 17 MA's), (34, 65048), (38, 64991), (39, 64982), (41, 64973), (42, 64961), (44, 64934), (46, 64919),

Gene: JaguarMi_79 Start: 65587, Stop: 65303, Start Num: 29
Candidate Starts for JaguarMi_79:
(Start: 29 @65587 has 17 MA's), (34, 65551), (39, 65485), (41, 65476), (42, 65464), (45, 65431), (50, 65407),

Gene: Jolie1_084 Start: 64656, Stop: 64360, Start Num: 33

Candidate Starts for Jolie1_084:

(16, 64818), (18, 64758), (Start: 33 @64656 has 3 MA's), (39, 64572), (43, 64548), (47, 64494),

Gene: Knocker_83 Start: 65702, Stop: 65406, Start Num: 33

Candidate Starts for Knocker_83:

(11, 65939), (13, 65930), (Start: 33 @65702 has 3 MA's), (36, 65636), (37, 65627), (42, 65594), (44, 65558),

Gene: LilMcDreamy_81 Start: 63946, Stop: 63668, Start Num: 24

Candidate Starts for LilMcDreamy_81:

(Start: 24 @63946 has 4 MA's), (Start: 30 @63940 has 4 MA's),

Gene: Lolalove_86 Start: 65538, Stop: 65260, Start Num: 29

Candidate Starts for Lolalove_86:

(Start: 29 @65538 has 17 MA's), (34, 65508), (36, 65463), (38, 65451), (39, 65442), (42, 65421), (44, 65394),

Gene: Magpie_81 Start: 65221, Stop: 64943, Start Num: 29

Candidate Starts for Magpie_81:

(Start: 29 @65221 has 17 MA's), (36, 65146), (38, 65134), (39, 65125), (42, 65104), (44, 65077),

Gene: Mithril_84 Start: 65378, Stop: 65100, Start Num: 29

Candidate Starts for Mithril_84:

(Start: 29 @65378 has 17 MA's), (34, 65348), (36, 65303), (38, 65291), (39, 65282), (42, 65261), (44, 65234),

Gene: Mudslide_85 Start: 65768, Stop: 65490, Start Num: 29

Candidate Starts for Mudslide_85:

(Start: 29 @65768 has 17 MA's), (34, 65738), (36, 65693), (38, 65681), (39, 65672), (42, 65651), (44, 65624),

Gene: Mysterious_84 Start: 63891, Stop: 63610, Start Num: 24

Candidate Starts for Mysterious_84:

(23, 63894), (Start: 24 @63891 has 4 MA's), (Start: 26 @63888 has 3 MA's), (Start: 30 @63882 has 4 MA's), (42, 63777), (44, 63741), (52, 63645),

Gene: Nanao_83 Start: 64397, Stop: 64113, Start Num: 29

Candidate Starts for Nanao_83:

(Start: 21 @64439 has 3 MA's), (Start: 29 @64397 has 17 MA's), (34, 64361), (38, 64304), (39, 64295), (41, 64286), (42, 64274), (44, 64247), (46, 64232),

Gene: Nangang_84 Start: 64289, Stop: 64008, Start Num: 24

Candidate Starts for Nangang_84:

(23, 64292), (Start: 24 @64289 has 4 MA's), (Start: 26 @64286 has 3 MA's), (Start: 30 @64280 has 4 MA's),

Gene: Nigel_81 Start: 63962, Stop: 63636, Start Num: 21

Candidate Starts for Nigel_81:

(3, 64301), (Start: 21 @63962 has 3 MA's), (Start: 29 @63920 has 17 MA's), (34, 63884), (35, 63860), (39, 63818), (41, 63809), (44, 63770), (46, 63755), (50, 63740),

Gene: PenguinLover67_82 Start: 63644, Stop: 63351, Start Num: 28

Candidate Starts for PenguinLover67_82:

(Start: 28 @63644 has 2 MA's), (34, 63602), (42, 63518), (51, 63422),

Gene: Phelemich_80 Start: 63840, Stop: 63568, Start Num: 30

Candidate Starts for Phelemich_80:

(2, 64257), (18, 63918), (23, 63852), (Start: 24 @63849 has 4 MA's), (Start: 26 @63846 has 3 MA's), (Start: 30 @63840 has 4 MA's), (38, 63765), (42, 63735), (44, 63699), (52, 63603),

Gene: Poster_82 Start: 64398, Stop: 64114, Start Num: 29

Candidate Starts for Poster_82:

(Start: 21 @64440 has 3 MA's), (Start: 29 @64398 has 17 MA's), (34, 64362), (38, 64305), (39, 64296), (41, 64287), (42, 64275), (44, 64248), (46, 64233),

Gene: Prince_84 Start: 65635, Stop: 65357, Start Num: 29

Candidate Starts for Prince_84:

(Start: 29 @65635 has 17 MA's), (34, 65605), (38, 65548), (39, 65539), (42, 65518), (44, 65491),

Gene: Quesadilla_83 Start: 64272, Stop: 63979, Start Num: 29

Candidate Starts for Quesadilla_83:

(Start: 29 @64272 has 17 MA's), (34, 64230),

Gene: RawrgerThat_84 Start: 65226, Stop: 64948, Start Num: 29

Candidate Starts for RawrgerThat_84:

(Start: 29 @65226 has 17 MA's), (34, 65196), (36, 65151), (38, 65139), (39, 65130), (42, 65109), (44, 65082),

Gene: Reprobate_82 Start: 63851, Stop: 63573, Start Num: 26

Candidate Starts for Reprobate_82:

(2, 64262), (18, 63923), (23, 63857), (Start: 24 @63854 has 4 MA's), (Start: 26 @63851 has 3 MA's), (Start: 30 @63845 has 4 MA's), (38, 63770), (42, 63740), (44, 63704), (52, 63608),

Gene: Rich_81 Start: 64507, Stop: 64226, Start Num: 26

Candidate Starts for Rich_81:

(18, 64579), (23, 64513), (Start: 24 @64510 has 4 MA's), (Start: 26 @64507 has 3 MA's), (27, 64504), (Start: 30 @64498 has 4 MA's),

Gene: Saguaro_78 Start: 62799, Stop: 62497, Start Num: 24

Candidate Starts for Saguaro_78:

(Start: 24 @62799 has 4 MA's), (Start: 29 @62790 has 17 MA's), (34, 62754), (44, 62628),

Gene: Serendipitous_83 Start: 63637, Stop: 63356, Start Num: 24

Candidate Starts for Serendipitous_83:

(23, 63640), (Start: 24 @63637 has 4 MA's), (Start: 26 @63634 has 3 MA's), (Start: 30 @63628 has 4 MA's),

Gene: SirJeffery_81 Start: 63582, Stop: 63310, Start Num: 30

Candidate Starts for SirJeffery_81:

(20, 63630), (Start: 30 @63582 has 4 MA's), (44, 63441),

Gene: Stinger_83 Start: 64081, Stop: 63758, Start Num: 21

Candidate Starts for Stinger_83:

(Start: 21 @64081 has 3 MA's), (Start: 29 @64039 has 17 MA's), (34, 64006), (35, 63982), (39, 63940), (41, 63931), (44, 63892), (50, 63862),

Gene: StinkyVeggy_81 Start: 63704, Stop: 63423, Start Num: 24
Candidate Starts for StinkyVeggy_81:
(23, 63707), (Start: 24 @63704 has 4 MA's), (Start: 26 @63701 has 3 MA's), (Start: 29 @63698 has 17 MA's), (Start: 30 @63695 has 4 MA's),

Gene: Suigeneris_84 Start: 64020, Stop: 63748, Start Num: 30
Candidate Starts for Suigeneris_84:
(19, 64095), (20, 64068), (Start: 30 @64020 has 4 MA's),

Gene: Vincenzo_85 Start: 66459, Stop: 66160, Start Num: 22
Candidate Starts for Vincenzo_85:
(4, 66807), (6, 66729), (Start: 22 @66459 has 2 MA's), (Start: 29 @66423 has 17 MA's), (31, 66417), (44, 66294), (48, 66273), (50, 66264), (51, 66234),

Gene: VioletZ_87 Start: 65725, Stop: 65447, Start Num: 29
Candidate Starts for VioletZ_87:
(Start: 29 @65725 has 17 MA's), (34, 65695), (36, 65650), (38, 65638), (39, 65629), (42, 65608), (44, 65581),

Gene: Waleliano_84 Start: 65393, Stop: 65115, Start Num: 29
Candidate Starts for Waleliano_84:
(Start: 29 @65393 has 17 MA's), (34, 65363), (36, 65318), (38, 65306), (39, 65297), (42, 65276), (44, 65249),

Gene: Zemanar_84 Start: 65406, Stop: 65128, Start Num: 29
Candidate Starts for Zemanar_84:
(Start: 29 @65406 has 17 MA's), (34, 65376), (36, 65331), (38, 65319), (39, 65310), (42, 65289), (44, 65262),

Gene: Zenteno07_96 Start: 67053, Stop: 66802, Start Num: 32
Candidate Starts for Zenteno07_96:
(Start: 32 @67053 has 2 MA's), (34, 67035), (47, 66894),