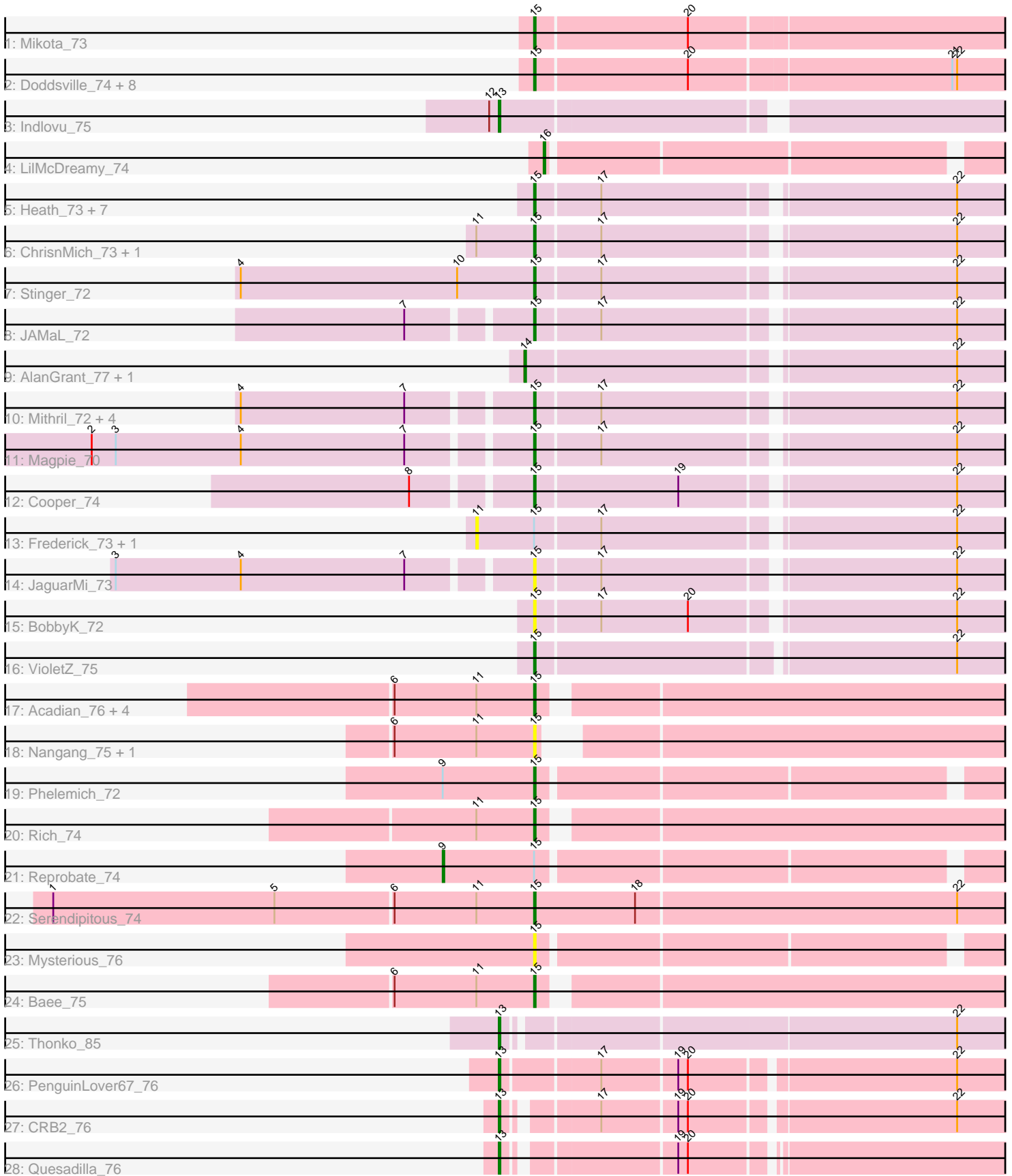


Pham 157904



Note: Tracks are now grouped by subcluster and scaled. Switching in subcluster is indicated by changes in track color. Track scale is now set by default to display the region 30 bp upstream of start 1 to 30 bp downstream of the last possible start. If this default region is judged to be packed too tightly with annotated starts, the track will be further scaled to only show that region of the ORF with annotated starts. This action will be indicated by adding "Zoomed" to the title. For starts, yellow indicates the location of called starts comprised solely of Glimmer/GeneMark auto-annotations, green indicates the location of called starts with at least 1 manual gene annotation.

Pham 157904 Report

This analysis was run 04/13/24 on database version 558.

Pham number 157904 has 55 members, 11 are drafts.

Phages represented in each track:

- Track 1 : Mikota_73
- Track 2 : Doddsville_74, Roy17_74, OSmaximus_76, PG1_76, Vortex_75, Lulumae_73, Boehler_75, Oline_75, Orion_76
- Track 3 : Indlovu_75
- Track 4 : LilMcDreamy_74
- Track 5 : Heath_73, Apex_74, Zemanar_73, Hangman_74, Austelle_73, Prince_72, Mudslide_73, Hydro_74
- Track 6 : ChrisnMich_73, Poster_71
- Track 7 : Stinger_72
- Track 8 : JAMaL_72
- Track 9 : AlanGrant_77, Vincenzo_76
- Track 10 : Mithril_72, Waleliano_72, Lolalove_74, BrownCNA_74, RawrgerThat_73
- Track 11 : Magpie_70
- Track 12 : Cooper_74
- Track 13 : Frederick_73, Nanao_72
- Track 14 : JaguarMi_73
- Track 15 : BobbyK_72
- Track 16 : VioletZ_75
- Track 17 : Acadian_76, EastView9101_77, Donny_77, Suigeneris_77, SirJeffery_74
- Track 18 : Nangang_75, DigitDog_76
- Track 19 : Phelemich_72
- Track 20 : Rich_74
- Track 21 : Reprobate_74
- Track 22 : Serendipitous_74
- Track 23 : Mysterious_76
- Track 24 : Bae_75
- Track 25 : Thonko_85
- Track 26 : PenguinLover67_76
- Track 27 : CRB2_76
- Track 28 : Quesadilla_76

Summary of Final Annotations (See graph section above for start numbers):

The start number called the most often in the published annotations is 15, it was called in 35 of the 44 non-draft genes in the pham.

Genes that call this "Most Annotated" start:

- Acadian_76, Apex_74, Austelle_73, Bae_75, BobbyK_72, Boehler_75, BrownCNA_74, ChrisnMich_73, Cooper_74, DigitDog_76, Doddsville_74, Donny_77, EastView9101_77, Hangman_74, Heath_73, Hydro_74, JAMaL_72, JaguarMi_73, Lolalove_74, Lulumae_73, Magpie_70, Mikota_73, Mithril_72, Mudslide_73, Mysterious_76, Nangang_75, OSmaximus_76, Oline_75, Orion_76, PG1_76, Phelemich_72, Poster_71, Prince_72, RawrgerThat_73, Rich_74, Roy17_74, Serendipitous_74, SirJeffery_74, Stinger_72, Suigeneris_77, VioletZ_75, Vortex_75, Waleliano_72, Zemanar_73,

Genes that have the "Most Annotated" start but do not call it:

- Frederick_73, Nanao_72, Reprobate_74,

Genes that do not have the "Most Annotated" start:

- AlanGrant_77, CRB2_76, Indlovu_75, LilMcDreamy_74, PenguinLover67_76, Quesadilla_76, Thonko_85, Vincenzo_76,

Summary by start number:

Start 9:

- Found in 2 of 55 (3.6%) of genes in pham
- Manual Annotations of this start: 1 of 44
- Called 50.0% of time when present
- Phage (with cluster) where this start called: Reprobate_74 (B5),

Start 11:

- Found in 14 of 55 (25.5%) of genes in pham
- No Manual Annotations of this start.
- Called 14.3% of time when present
- Phage (with cluster) where this start called: Frederick_73 (B4), Nanao_72 (B4),

Start 13:

- Found in 5 of 55 (9.1%) of genes in pham
- Manual Annotations of this start: 5 of 44
- Called 100.0% of time when present
- Phage (with cluster) where this start called: CRB2_76 (B9), Indlovu_75 (B11), PenguinLover67_76 (B9), Quesadilla_76 (B9), Thonko_85 (B8),

Start 14:

- Found in 2 of 55 (3.6%) of genes in pham
- Manual Annotations of this start: 2 of 44
- Called 100.0% of time when present
- Phage (with cluster) where this start called: AlanGrant_77 (B4), Vincenzo_76 (B4),

Start 15:

- Found in 47 of 55 (85.5%) of genes in pham
- Manual Annotations of this start: 35 of 44
- Called 93.6% of time when present
- Phage (with cluster) where this start called: Acadian_76 (B5), Apex_74 (B4), Austelle_73 (B4), Bae_75 (B5), BobbyK_72 (B4), Boehler_75 (B1), BrownCNA_74

(B4), ChrisnMich_73 (B4), Cooper_74 (B4), DigitDog_76 (B5), Doddsville_74 (B1), Donny_77 (B5), EastView9101_77 (B5), Hangman_74 (B4), Heath_73 (B4), Hydro_74 (B4), JAMaL_72 (B4), JaguarMi_73 (B4), Lolalove_74 (B4), Lulumae_73 (B1), Magpie_70 (B4), Mikota_73 (B1), Mithril_72 (B4), Mudslide_73 (B4), Mysterious_76 (B5), Nangang_75 (B5), OSmaximus_76 (B1), Oline_75 (B1), Orion_76 (B1), PG1_76 (B1), Phelemich_72 (B5), Poster_71 (B4), Prince_72 (B4), RawrgerThat_73 (B4), Rich_74 (B5), Roy17_74 (B1), Serendipitous_74 (B5), SirJeffery_74 (B5), Stinger_72 (B4), Suigeneris_77 (B5), VioletZ_75 (B4), Vortex_75 (B1), Waleliano_72 (B4), Zemanar_73 (B4),

Start 16:

- Found in 1 of 55 (1.8%) of genes in pham
- Manual Annotations of this start: 1 of 44
- Called 100.0% of time when present
- Phage (with cluster) where this start called: LilMcDreamy_74 (B12),

Summary by clusters:

There are 7 clusters represented in this pham: B4, B5, B12, B1, B11, B8, B9,

Info for manual annotations of cluster B1:

- Start number 15 was manually annotated 10 times for cluster B1.

Info for manual annotations of cluster B11:

- Start number 13 was manually annotated 1 time for cluster B11.

Info for manual annotations of cluster B12:

- Start number 16 was manually annotated 1 time for cluster B12.

Info for manual annotations of cluster B4:

- Start number 14 was manually annotated 2 times for cluster B4.
- Start number 15 was manually annotated 18 times for cluster B4.

Info for manual annotations of cluster B5:

- Start number 9 was manually annotated 1 time for cluster B5.
- Start number 15 was manually annotated 7 times for cluster B5.

Info for manual annotations of cluster B8:

- Start number 13 was manually annotated 1 time for cluster B8.

Info for manual annotations of cluster B9:

- Start number 13 was manually annotated 3 times for cluster B9.

Gene Information:

Gene: Acadian_76 Start: 61455, Stop: 61769, Start Num: 15

Candidate Starts for Acadian_76:

(6, 61368), (11, 61419), (Start: 15 @61455 has 35 MA's),

Gene: AlanGrant_77 Start: 63336, Stop: 63656, Start Num: 14

Candidate Starts for AlanGrant_77:

(Start: 14 @63336 has 2 MA's), (22, 63588),

Gene: Apex_74 Start: 61991, Stop: 62302, Start Num: 15

Candidate Starts for Apex_74:

(Start: 15 @61991 has 35 MA's), (17, 62030), (22, 62237),

Gene: Austelle_73 Start: 62508, Stop: 62819, Start Num: 15

Candidate Starts for Austelle_73:

(Start: 15 @62508 has 35 MA's), (17, 62547), (22, 62754),

Gene: Bae_75 Start: 62154, Stop: 62468, Start Num: 15

Candidate Starts for Bae_75:

(6, 62067), (11, 62118), (Start: 15 @62154 has 35 MA's),

Gene: BobbyK_72 Start: 61762, Stop: 62073, Start Num: 15

Candidate Starts for BobbyK_72:

(Start: 15 @61762 has 35 MA's), (17, 61801), (20, 61855), (22, 62008),

Gene: Boehler_75 Start: 60324, Stop: 60653, Start Num: 15

Candidate Starts for Boehler_75:

(Start: 15 @60324 has 35 MA's), (20, 60417), (21, 60576), (22, 60579),

Gene: BrownCNA_74 Start: 61930, Stop: 62244, Start Num: 15

Candidate Starts for BrownCNA_74:

(4, 61759), (7, 61861), (Start: 15 @61930 has 35 MA's), (17, 61969), (22, 62176),

Gene: CRB2_76 Start: 64139, Stop: 64459, Start Num: 13

Candidate Starts for CRB2_76:

(Start: 13 @64139 has 5 MA's), (17, 64187), (19, 64232), (20, 64238), (22, 64394),

Gene: ChrisnMich_73 Start: 60878, Stop: 61189, Start Num: 15

Candidate Starts for ChrisnMich_73:

(11, 60842), (Start: 15 @60878 has 35 MA's), (17, 60917), (22, 61124),

Gene: Cooper_74 Start: 61332, Stop: 61646, Start Num: 15

Candidate Starts for Cooper_74:

(8, 61266), (Start: 15 @61332 has 35 MA's), (19, 61419), (22, 61578),

Gene: DigitDog_76 Start: 61556, Stop: 61867, Start Num: 15

Candidate Starts for DigitDog_76:

(6, 61469), (11, 61520), (Start: 15 @61556 has 35 MA's),

Gene: Doddsville_74 Start: 60184, Stop: 60513, Start Num: 15

Candidate Starts for Doddsville_74:

(Start: 15 @60184 has 35 MA's), (20, 60277), (21, 60436), (22, 60439),

Gene: Donny_77 Start: 61495, Stop: 61809, Start Num: 15

Candidate Starts for Donny_77:

(6, 61408), (11, 61459), (Start: 15 @61495 has 35 MA's),

Gene: EastView9101_77 Start: 61199, Stop: 61513, Start Num: 15

Candidate Starts for EastView9101_77:

(6, 61112), (11, 61163), (Start: 15 @61199 has 35 MA's),

Gene: Frederick_73 Start: 61979, Stop: 62326, Start Num: 11
Candidate Starts for Frederick_73:
(11, 61979), (Start: 15 @62015 has 35 MA's), (17, 62054), (22, 62261),

Gene: Hangman_74 Start: 62206, Stop: 62517, Start Num: 15
Candidate Starts for Hangman_74:
(Start: 15 @62206 has 35 MA's), (17, 62245), (22, 62452),

Gene: Heath_73 Start: 61833, Stop: 62144, Start Num: 15
Candidate Starts for Heath_73:
(Start: 15 @61833 has 35 MA's), (17, 61872), (22, 62079),

Gene: Hydro_74 Start: 62144, Stop: 62455, Start Num: 15
Candidate Starts for Hydro_74:
(Start: 15 @62144 has 35 MA's), (17, 62183), (22, 62390),

Gene: Indlovu_75 Start: 62474, Stop: 62809, Start Num: 13
Candidate Starts for Indlovu_75:
(12, 62468), (Start: 13 @62474 has 5 MA's),

Gene: JAMaL_72 Start: 61620, Stop: 61910, Start Num: 15
Candidate Starts for JAMaL_72:
(7, 61551), (Start: 15 @61620 has 35 MA's), (17, 61659), (22, 61866),

Gene: JaguarMi_73 Start: 62960, Stop: 63271, Start Num: 15
Candidate Starts for JaguarMi_73:
(3, 62711), (4, 62789), (7, 62891), (Start: 15 @62960 has 35 MA's), (17, 62999), (22, 63206),

Gene: LilMcDreamy_74 Start: 61526, Stop: 61819, Start Num: 16
Candidate Starts for LilMcDreamy_74:
(Start: 16 @61526 has 1 MA's),

Gene: Lolalove_74 Start: 61861, Stop: 62175, Start Num: 15
Candidate Starts for Lolalove_74:
(4, 61690), (7, 61792), (Start: 15 @61861 has 35 MA's), (17, 61900), (22, 62107),

Gene: Lulumae_73 Start: 59863, Stop: 60192, Start Num: 15
Candidate Starts for Lulumae_73:
(Start: 15 @59863 has 35 MA's), (20, 59956), (21, 60115), (22, 60118),

Gene: Magpie_70 Start: 61485, Stop: 61796, Start Num: 15
Candidate Starts for Magpie_70:
(2, 61221), (3, 61236), (4, 61314), (7, 61416), (Start: 15 @61485 has 35 MA's), (17, 61524), (22, 61731),

Gene: Mikota_73 Start: 59676, Stop: 60005, Start Num: 15
Candidate Starts for Mikota_73:
(Start: 15 @59676 has 35 MA's), (20, 59769),

Gene: Mithril_72 Start: 61860, Stop: 62174, Start Num: 15
Candidate Starts for Mithril_72:
(4, 61689), (7, 61791), (Start: 15 @61860 has 35 MA's), (17, 61899), (22, 62106),

Gene: Mudslide_73 Start: 62093, Stop: 62404, Start Num: 15

Candidate Starts for Mudslide_73:

(Start: 15 @62093 has 35 MA's), (17, 62132), (22, 62339),

Gene: Mysterious_76 Start: 61457, Stop: 61762, Start Num: 15

Candidate Starts for Mysterious_76:

(Start: 15 @61457 has 35 MA's),

Gene: Nanao_72 Start: 60860, Stop: 61207, Start Num: 11

Candidate Starts for Nanao_72:

(11, 60860), (Start: 15 @60896 has 35 MA's), (17, 60935), (22, 61142),

Gene: Nangang_75 Start: 61582, Stop: 61881, Start Num: 15

Candidate Starts for Nangang_75:

(6, 61495), (11, 61546), (Start: 15 @61582 has 35 MA's),

Gene: OSmaximus_76 Start: 61108, Stop: 61437, Start Num: 15

Candidate Starts for OSmaximus_76:

(Start: 15 @61108 has 35 MA's), (20, 61201), (21, 61360), (22, 61363),

Gene: Oline_75 Start: 60304, Stop: 60633, Start Num: 15

Candidate Starts for Oline_75:

(Start: 15 @60304 has 35 MA's), (20, 60397), (21, 60556), (22, 60559),

Gene: Orion_76 Start: 60252, Stop: 60581, Start Num: 15

Candidate Starts for Orion_76:

(Start: 15 @60252 has 35 MA's), (20, 60345), (21, 60504), (22, 60507),

Gene: PG1_76 Start: 60823, Stop: 61152, Start Num: 15

Candidate Starts for PG1_76:

(Start: 15 @60823 has 35 MA's), (20, 60916), (21, 61075), (22, 61078),

Gene: PenguinLover67_76 Start: 61882, Stop: 62211, Start Num: 13

Candidate Starts for PenguinLover67_76:

(Start: 13 @61882 has 5 MA's), (17, 61939), (19, 61984), (20, 61990), (22, 62146),

Gene: Phelemich_72 Start: 61326, Stop: 61631, Start Num: 15

Candidate Starts for Phelemich_72:

(Start: 9 @61269 has 1 MA's), (Start: 15 @61326 has 35 MA's),

Gene: Poster_71 Start: 60897, Stop: 61208, Start Num: 15

Candidate Starts for Poster_71:

(11, 60861), (Start: 15 @60897 has 35 MA's), (17, 60936), (22, 61143),

Gene: Prince_72 Start: 61991, Stop: 62302, Start Num: 15

Candidate Starts for Prince_72:

(Start: 15 @61991 has 35 MA's), (17, 62030), (22, 62234),

Gene: Quesadilla_76 Start: 62243, Stop: 62560, Start Num: 13

Candidate Starts for Quesadilla_76:

(Start: 13 @62243 has 5 MA's), (19, 62336), (20, 62342),

Gene: RawrgerThat_73 Start: 61689, Stop: 62000, Start Num: 15
Candidate Starts for RawrgerThat_73:
(4, 61518), (7, 61620), (Start: 15 @61689 has 35 MA's), (17, 61728), (22, 61935),

Gene: Reprobate_74 Start: 61274, Stop: 61636, Start Num: 9
Candidate Starts for Reprobate_74:
(Start: 9 @61274 has 1 MA's), (Start: 15 @61331 has 35 MA's),

Gene: Rich_74 Start: 62199, Stop: 62513, Start Num: 15
Candidate Starts for Rich_74:
(11, 62163), (Start: 15 @62199 has 35 MA's),

Gene: Roy17_74 Start: 59863, Stop: 60192, Start Num: 15
Candidate Starts for Roy17_74:
(Start: 15 @59863 has 35 MA's), (20, 59956), (21, 60115), (22, 60118),

Gene: Serendipitous_74 Start: 60885, Stop: 61214, Start Num: 15
Candidate Starts for Serendipitous_74:
(1, 60588), (5, 60726), (6, 60798), (11, 60849), (Start: 15 @60885 has 35 MA's), (18, 60948), (22, 61146),

Gene: SirJeffery_74 Start: 61239, Stop: 61553, Start Num: 15
Candidate Starts for SirJeffery_74:
(6, 61152), (11, 61203), (Start: 15 @61239 has 35 MA's),

Gene: Stinger_72 Start: 60638, Stop: 60928, Start Num: 15
Candidate Starts for Stinger_72:
(4, 60455), (10, 60590), (Start: 15 @60638 has 35 MA's), (17, 60677), (22, 60884),

Gene: Suigeneris_77 Start: 61677, Stop: 61991, Start Num: 15
Candidate Starts for Suigeneris_77:
(6, 61590), (11, 61641), (Start: 15 @61677 has 35 MA's),

Gene: Thonko_85 Start: 62711, Stop: 62379, Start Num: 13
Candidate Starts for Thonko_85:
(Start: 13 @62711 has 5 MA's), (22, 62444),

Gene: Vincenzo_76 Start: 63366, Stop: 63686, Start Num: 14
Candidate Starts for Vincenzo_76:
(Start: 14 @63366 has 2 MA's), (22, 63618),

Gene: VioletZ_75 Start: 61985, Stop: 62299, Start Num: 15
Candidate Starts for VioletZ_75:
(Start: 15 @61985 has 35 MA's), (22, 62234),

Gene: Vortex_75 Start: 60408, Stop: 60737, Start Num: 15
Candidate Starts for Vortex_75:
(Start: 15 @60408 has 35 MA's), (20, 60501), (21, 60660), (22, 60663),

Gene: Waleliano_72 Start: 61683, Stop: 61997, Start Num: 15
Candidate Starts for Waleliano_72:
(4, 61512), (7, 61614), (Start: 15 @61683 has 35 MA's), (17, 61722), (22, 61929),

Gene: Zemanar_73 Start: 61935, Stop: 62246, Start Num: 15
Candidate Starts for Zemanar_73:
(Start: 15 @61935 has 35 MA's), (17, 61974), (22, 62181),