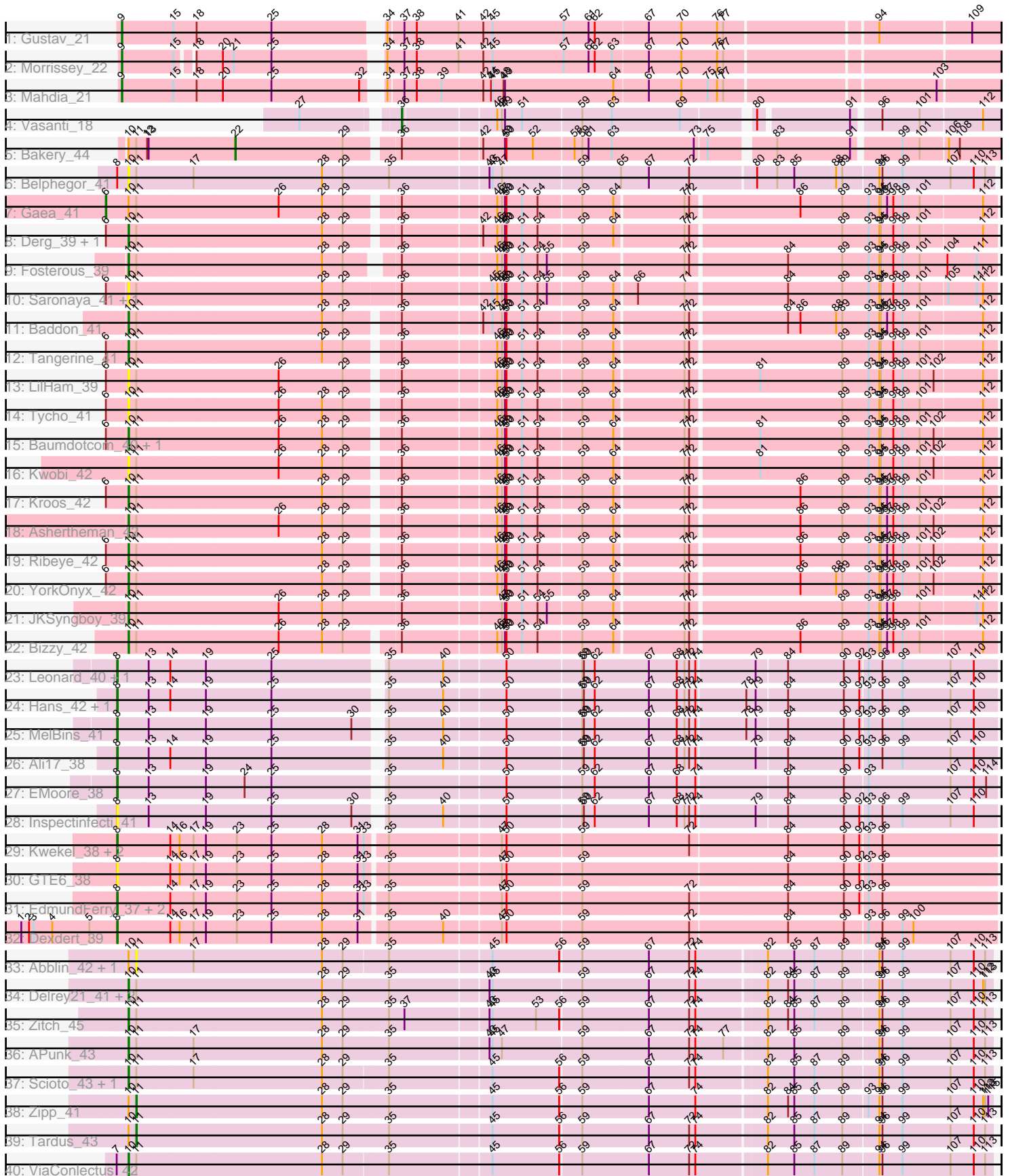


Pham 157914



Note: Tracks are now grouped by subcluster and scaled. Switching in subcluster is indicated by changes in track color. Track scale is now set by default to display the region 30 bp upstream of start 1 to 30 bp downstream of the last possible start. If this default region is judged to be packed too tightly with annotated starts, the track will be further scaled to only show that region of the ORF with annotated starts. This action will be indicated by adding "Zoomed" to the title. For starts, yellow indicates the location of called starts comprised solely of Glimmer/GeneMark auto-annotations, green indicates the location of called starts with at least 1 manual gene annotation.

Pham 157914 Report

This analysis was run 04/13/24 on database version 558.

Pham number 157914 has 53 members, 14 are drafts.

Phages represented in each track:

- Track 1 : Gustav_21
- Track 2 : Morrissey_22
- Track 3 : Mahdia_21
- Track 4 : Vasanti_18
- Track 5 : Bakery_44
- Track 6 : Belphegor_41
- Track 7 : Gaea_41
- Track 8 : Derg_39, Flatwoods_42
- Track 9 : Fosterous_39
- Track 10 : Saronaya_41, Gustavo_41
- Track 11 : Baddon_41
- Track 12 : Tangerine_41
- Track 13 : LilHam_39
- Track 14 : Tycho_41
- Track 15 : Baumdotcom_40, SchottB_40
- Track 16 : Kwobi_42
- Track 17 : Kroos_42
- Track 18 : Ashertheman_42
- Track 19 : Ribeye_42
- Track 20 : YorkOnyx_42
- Track 21 : JKSyngboy_39
- Track 22 : Bizzy_42
- Track 23 : Leonard_40, Phinally_40
- Track 24 : Hans_42, Phauci_33
- Track 25 : MelBins_41
- Track 26 : Ali17_38
- Track 27 : EMOore_38
- Track 28 : Inspectinfecti_41
- Track 29 : Kwekel_38, Chickadee_38, Tiamoceli_39
- Track 30 : GTE6_38
- Track 31 : EdmundFerry_37, RoadKill_36, Twonlo_36
- Track 32 : Dxdert_39
- Track 33 : Abblin_42, Natkenzie_42
- Track 34 : Delrey21_41, Verity_41, DoctorFroggo_41
- Track 35 : Zitch_45
- Track 36 : APunk_43
- Track 37 : Scioto_43, Sampson_42

- Track 38 : Zipp_41
- Track 39 : Tardus_43
- Track 40 : ViaConlectus_42

Summary of Final Annotations (See graph section above for start numbers):

The start number called the most often in the published annotations is 10, it was called in 18 of the 39 non-draft genes in the pham.

Genes that call this "Most Annotated" start:

- APunk_43, Ashertheman_42, Baddon_41, Baumdotcom_40, Belphegor_41, Bizzy_42, Delrey21_41, Derg_39, DoctorFroggo_41, Flatwoods_42, Fosterous_39, Gustavo_41, JKSyngboy_39, Kroos_42, Kwobi_42, LilHam_39, Ribeye_42, Sampson_42, Saronaya_41, SchottB_40, Scioto_43, Tangerine_41, Tycho_41, Verity_41, ViaConlectus_42, YorkOnyx_42, Zitch_45,

Genes that have the "Most Annotated" start but do not call it:

- Abblin_42, Bakery_44, Gaea_41, Natkenzie_42, Tardus_43, Zipp_41,

Genes that do not have the "Most Annotated" start:

- Ali17_38, Chickadee_38, Dxdert_39, EMoore_38, EdmundFerry_37, GTE6_38, Gustav_21, Hans_42, Inspectinfecti_41, Kwekel_38, Leonard_40, Mahdia_21, MelBins_41, Morrissey_22, Phauci_33, Phinally_40, RoadKill_36, Tiamoceli_39, Twonlo_36, Vasanti_18,

Summary by start number:

Start 6:

- Found in 13 of 53 (24.5%) of genes in pham
- Manual Annotations of this start: 1 of 39
- Called 7.7% of time when present
- Phage (with cluster) where this start called: Gaea_41 (DE1),

Start 8:

- Found in 17 of 53 (32.1%) of genes in pham
- Manual Annotations of this start: 13 of 39
- Called 94.1% of time when present
- Phage (with cluster) where this start called: Ali17_38 (DE2), Chickadee_38 (DE3), Dxdert_39 (DE3), EMoore_38 (DE2), EdmundFerry_37 (DE3), GTE6_38 (DE3), Hans_42 (DE2), Inspectinfecti_41 (DE2), Kwekel_38 (DE3), Leonard_40 (DE2), MelBins_41 (DE2), Phauci_33 (DE2), Phinally_40 (DE2), RoadKill_36 (DE3), Tiamoceli_39 (DE3), Twonlo_36 (DE3),

Start 9:

- Found in 3 of 53 (5.7%) of genes in pham
- Manual Annotations of this start: 3 of 39
- Called 100.0% of time when present
- Phage (with cluster) where this start called: Gustav_21 (CD), Mahdia_21 (CD), Morrissey_22 (CD),

Start 10:

- Found in 33 of 53 (62.3%) of genes in pham
- Manual Annotations of this start: 18 of 39
- Called 81.8% of time when present
- Phage (with cluster) where this start called: APunk_43 (DE4), Ashertheman_42 (DE1), Baddon_41 (DE1), Baumdotcom_40 (DE1), Belphegor_41 (DE), Bizzy_42 (DE1), Delrey21_41 (DE4), Derg_39 (DE1), DoctorFroggo_41 (DE4), Flatwoods_42 (DE1), Fosterous_39 (DE1), Gustavo_41 (DE1), JKSyngboy_39 (DE1), Kroos_42 (DE1), Kwobi_42 (DE1), LilHam_39 (DE1), Ribeye_42 (DE1), Sampson_42 (DE4), Saronaya_41 (DE1), SchottB_40 (DE1), Scioto_43 (DE4), Tangerine_41 (DE1), Tycho_41 (DE1), Verity_41 (DE4), ViaConlectus_42 (DE4), YorkOnyx_42 (DE1), Zitch_45 (DE4),

Start 11:

- Found in 33 of 53 (62.3%) of genes in pham
- Manual Annotations of this start: 2 of 39
- Called 12.1% of time when present
- Phage (with cluster) where this start called: Abblin_42 (DE4), Natkenzie_42 (DE4), Tardus_43 (DE4), Zipp_41 (DE4),

Start 22:

- Found in 1 of 53 (1.9%) of genes in pham
- Manual Annotations of this start: 1 of 39
- Called 100.0% of time when present
- Phage (with cluster) where this start called: Bakery_44 (DC1),

Start 36:

- Found in 21 of 53 (39.6%) of genes in pham
- Manual Annotations of this start: 1 of 39
- Called 4.8% of time when present
- Phage (with cluster) where this start called: Vasanti_18 (CZ2),

Summary by clusters:

There are 8 clusters represented in this pham: DE, CZ2, DE1, DE2, DE3, DE4, CD, DC1,

Info for manual annotations of cluster CD:

- Start number 9 was manually annotated 3 times for cluster CD.

Info for manual annotations of cluster CZ2:

- Start number 36 was manually annotated 1 time for cluster CZ2.

Info for manual annotations of cluster DC1:

- Start number 22 was manually annotated 1 time for cluster DC1.

Info for manual annotations of cluster DE1:

- Start number 6 was manually annotated 1 time for cluster DE1.
- Start number 10 was manually annotated 11 times for cluster DE1.

Info for manual annotations of cluster DE2:

- Start number 8 was manually annotated 7 times for cluster DE2.

Info for manual annotations of cluster DE3:

- Start number 8 was manually annotated 6 times for cluster DE3.

Info for manual annotations of cluster DE4:

- Start number 10 was manually annotated 7 times for cluster DE4.
- Start number 11 was manually annotated 2 times for cluster DE4.

Gene Information:

Gene: APunk_43 Start: 37152, Stop: 38765, Start Num: 10

Candidate Starts for APunk_43:

(Start: 10 @37152 has 18 MA's), (Start: 11 @37167 has 2 MA's), (17, 37275), (28, 37518), (29, 37557), (35, 37644), (43, 37827), (45, 37833), (47, 37851), (59, 38001), (67, 38127), (72, 38202), (74, 38214), (77, 38268), (82, 38343), (85, 38394), (89, 38484), (94, 38550), (96, 38556), (99, 38592), (107, 38685), (110, 38730), (113, 38751),

Gene: Abblin_42 Start: 37710, Stop: 39302, Start Num: 11

Candidate Starts for Abblin_42:

(Start: 10 @37695 has 18 MA's), (Start: 11 @37710 has 2 MA's), (17, 37818), (28, 38061), (29, 38100), (35, 38181), (45, 38370), (56, 38499), (59, 38538), (67, 38664), (72, 38739), (74, 38751), (82, 38880), (85, 38931), (87, 38970), (89, 39021), (94, 39087), (96, 39093), (99, 39129), (107, 39222), (110, 39267), (113, 39288),

Gene: Ali17_38 Start: 35417, Stop: 37030, Start Num: 8

Candidate Starts for Ali17_38:

(Start: 8 @35417 has 13 MA's), (13, 35477), (14, 35519), (19, 35588), (25, 35714), (35, 35909), (40, 36014), (50, 36125), (59, 36266), (60, 36269), (62, 36290), (67, 36392), (68, 36446), (71, 36458), (72, 36467), (74, 36479), (79, 36584), (84, 36641), (90, 36749), (92, 36779), (93, 36791), (96, 36818), (99, 36854), (107, 36947), (110, 36992),

Gene: Ashertheman_42 Start: 36687, Stop: 38270, Start Num: 10

Candidate Starts for Ashertheman_42:

(Start: 10 @36687 has 18 MA's), (Start: 11 @36702 has 2 MA's), (26, 36972), (28, 37053), (29, 37092), (Start: 36 @37176 has 1 MA's), (46, 37347), (47, 37356), (49, 37362), (50, 37365), (51, 37395), (54, 37425), (59, 37506), (64, 37566), (71, 37692), (72, 37701), (86, 37905), (89, 37983), (93, 38031), (94, 38052), (95, 38055), (97, 38067), (98, 38079), (99, 38094), (101, 38127), (102, 38154), (112, 38244),

Gene: Baddon_41 Start: 37222, Stop: 38805, Start Num: 10

Candidate Starts for Baddon_41:

(Start: 10 @37222 has 18 MA's), (Start: 11 @37237 has 2 MA's), (28, 37588), (29, 37627), (Start: 36 @37711 has 1 MA's), (42, 37855), (45, 37873), (47, 37891), (49, 37897), (50, 37900), (51, 37930), (54, 37960), (59, 38041), (64, 38101), (71, 38227), (72, 38236), (84, 38416), (86, 38440), (88, 38506), (89, 38518), (93, 38566), (94, 38587), (95, 38590), (97, 38602), (98, 38614), (99, 38629), (101, 38662), (112, 38779),

Gene: Bakery_44 Start: 34687, Stop: 36054, Start Num: 22

Candidate Starts for Bakery_44:

(Start: 10 @34486 has 18 MA's), (Start: 11 @34501 has 2 MA's), (12, 34522), (13, 34525), (Start: 22 @34687 has 1 MA's), (29, 34891), (Start: 36 @34975 has 1 MA's), (42, 35119), (49, 35161), (50,

35164), (52, 35215), (58, 35290), (59, 35305), (61, 35317), (63, 35362), (73, 35515), (75, 35536), (83, 35647), (91, 35785), (99, 35869), (101, 35902), (106, 35953), (108, 35974),

Gene: Baumdotcom_40 Start: 36074, Stop: 37657, Start Num: 10

Candidate Starts for Baumdotcom_40:

(Start: 6 @36035 has 1 MA's), (Start: 10 @36074 has 18 MA's), (Start: 11 @36089 has 2 MA's), (26, 36359), (28, 36440), (29, 36479), (Start: 36 @36563 has 1 MA's), (46, 36734), (47, 36743), (49, 36749), (50, 36752), (51, 36782), (54, 36812), (59, 36893), (64, 36953), (71, 37079), (72, 37088), (81, 37214), (89, 37370), (93, 37418), (94, 37439), (95, 37442), (98, 37466), (99, 37481), (101, 37514), (102, 37541), (112, 37631),

Gene: Belphegor_41 Start: 37453, Stop: 39072, Start Num: 10

Candidate Starts for Belphegor_41:

(Start: 8 @37432 has 13 MA's), (Start: 10 @37453 has 18 MA's), (Start: 11 @37468 has 2 MA's), (17, 37576), (28, 37819), (29, 37858), (35, 37948), (43, 38131), (45, 38137), (47, 38155), (59, 38305), (65, 38380), (67, 38431), (72, 38506), (80, 38626), (83, 38665), (85, 38698), (88, 38776), (89, 38788), (94, 38854), (96, 38860), (99, 38896), (107, 38989), (110, 39034), (113, 39055),

Gene: Bizzy_42 Start: 36382, Stop: 37965, Start Num: 10

Candidate Starts for Bizzy_42:

(Start: 10 @36382 has 18 MA's), (Start: 11 @36397 has 2 MA's), (26, 36667), (28, 36748), (29, 36787), (Start: 36 @36871 has 1 MA's), (46, 37042), (47, 37051), (49, 37057), (50, 37060), (51, 37090), (54, 37120), (59, 37201), (64, 37261), (71, 37387), (72, 37396), (86, 37600), (89, 37678), (93, 37726), (94, 37747), (95, 37750), (97, 37762), (98, 37774), (99, 37789), (101, 37822), (112, 37939),

Gene: Chickadee_38 Start: 33890, Stop: 35524, Start Num: 8

Candidate Starts for Chickadee_38:

(Start: 8 @33890 has 13 MA's), (14, 33992), (16, 34010), (17, 34037), (19, 34061), (23, 34121), (25, 34187), (28, 34280), (31, 34349), (33, 34361), (35, 34397), (47, 34604), (50, 34613), (59, 34754), (72, 34955), (84, 35135), (90, 35243), (92, 35273), (93, 35285), (96, 35312),

Gene: Delrey21_41 Start: 37882, Stop: 39492, Start Num: 10

Candidate Starts for Delrey21_41:

(Start: 10 @37882 has 18 MA's), (Start: 11 @37897 has 2 MA's), (28, 38248), (29, 38287), (35, 38371), (43, 38554), (45, 38560), (59, 38728), (67, 38854), (72, 38929), (74, 38941), (82, 39070), (84, 39109), (85, 39121), (87, 39160), (89, 39211), (94, 39277), (96, 39283), (99, 39319), (107, 39412), (110, 39457), (112, 39475), (113, 39478),

Gene: Derg_39 Start: 35972, Stop: 37555, Start Num: 10

Candidate Starts for Derg_39:

(Start: 6 @35933 has 1 MA's), (Start: 10 @35972 has 18 MA's), (Start: 11 @35987 has 2 MA's), (28, 36338), (29, 36377), (Start: 36 @36461 has 1 MA's), (42, 36605), (46, 36632), (47, 36641), (49, 36647), (50, 36650), (51, 36680), (54, 36710), (59, 36791), (64, 36851), (71, 36977), (72, 36986), (89, 37268), (93, 37316), (94, 37337), (95, 37340), (98, 37364), (99, 37379), (101, 37412), (112, 37529),

Gene: Dxdert_39 Start: 34152, Stop: 35783, Start Num: 8

Candidate Starts for Dxdert_39:

(1, 33966), (2, 33981), (3, 33990), (4, 34026), (5, 34098), (Start: 8 @34152 has 13 MA's), (14, 34254), (16, 34272), (17, 34299), (19, 34323), (23, 34383), (25, 34449), (28, 34542), (31, 34611), (35, 34659), (40, 34764), (47, 34866), (50, 34875), (59, 35016), (72, 35217), (84, 35397), (90, 35505), (93, 35547), (96, 35574), (99, 35610), (100, 35631),

Gene: DoctorFroggo_41 Start: 37882, Stop: 39492, Start Num: 10

Candidate Starts for DoctorFroggo_41:

(Start: 10 @37882 has 18 MA's), (Start: 11 @37897 has 2 MA's), (28, 38248), (29, 38287), (35, 38371), (43, 38554), (45, 38560), (59, 38728), (67, 38854), (72, 38929), (74, 38941), (82, 39070), (84, 39109), (85, 39121), (87, 39160), (89, 39211), (94, 39277), (96, 39283), (99, 39319), (107, 39412), (110, 39457), (112, 39475), (113, 39478),

Gene: EMoore_38 Start: 36591, Stop: 38207, Start Num: 8

Candidate Starts for EMoore_38:

(Start: 8 @36591 has 13 MA's), (13, 36651), (19, 36762), (24, 36837), (25, 36888), (35, 37083), (50, 37299), (59, 37440), (62, 37464), (67, 37566), (68, 37620), (74, 37653), (84, 37815), (90, 37923), (93, 37965), (107, 38121), (110, 38166), (114, 38187),

Gene: EdmundFerry_37 Start: 33919, Stop: 35553, Start Num: 8

Candidate Starts for EdmundFerry_37:

(Start: 8 @33919 has 13 MA's), (14, 34021), (17, 34066), (19, 34090), (23, 34150), (25, 34216), (28, 34309), (31, 34378), (33, 34390), (35, 34426), (47, 34633), (50, 34642), (59, 34783), (72, 34984), (84, 35164), (90, 35272), (92, 35302), (93, 35314), (96, 35341),

Gene: Flatwoods_42 Start: 36324, Stop: 37907, Start Num: 10

Candidate Starts for Flatwoods_42:

(Start: 6 @36285 has 1 MA's), (Start: 10 @36324 has 18 MA's), (Start: 11 @36339 has 2 MA's), (28, 36690), (29, 36729), (Start: 36 @36813 has 1 MA's), (42, 36957), (46, 36984), (47, 36993), (49, 36999), (50, 37002), (51, 37032), (54, 37062), (59, 37143), (64, 37203), (71, 37329), (72, 37338), (89, 37620), (93, 37668), (94, 37689), (95, 37692), (98, 37716), (99, 37731), (101, 37764), (112, 37881),

Gene: Fosterous_39 Start: 36067, Stop: 37644, Start Num: 10

Candidate Starts for Fosterous_39:

(Start: 10 @36067 has 18 MA's), (Start: 11 @36082 has 2 MA's), (28, 36433), (29, 36472), (Start: 36 @36547 has 1 MA's), (46, 36718), (47, 36727), (49, 36733), (50, 36736), (51, 36766), (54, 36796), (55, 36814), (59, 36877), (71, 37063), (72, 37072), (84, 37252), (89, 37354), (93, 37405), (94, 37426), (95, 37429), (98, 37453), (99, 37468), (101, 37501), (104, 37552), (111, 37606),

Gene: GTE6_38 Start: 34411, Stop: 36045, Start Num: 8

Candidate Starts for GTE6_38:

(Start: 8 @34411 has 13 MA's), (14, 34513), (16, 34531), (17, 34558), (19, 34582), (23, 34642), (25, 34708), (28, 34801), (31, 34870), (33, 34882), (35, 34918), (47, 35125), (50, 35134), (59, 35275), (84, 35656), (90, 35764), (92, 35794), (93, 35806), (96, 35833),

Gene: Gaea_41 Start: 35931, Stop: 37553, Start Num: 6

Candidate Starts for Gaea_41:

(Start: 6 @35931 has 1 MA's), (Start: 10 @35970 has 18 MA's), (Start: 11 @35985 has 2 MA's), (26, 36255), (28, 36336), (29, 36375), (Start: 36 @36459 has 1 MA's), (46, 36630), (47, 36639), (49, 36645), (50, 36648), (51, 36678), (54, 36708), (59, 36789), (64, 36849), (71, 36975), (72, 36984), (86, 37188), (89, 37266), (93, 37314), (94, 37335), (95, 37338), (97, 37350), (98, 37362), (99, 37377), (101, 37410), (112, 37527),

Gene: Gustav_21 Start: 17436, Stop: 19031, Start Num: 9

Candidate Starts for Gustav_21:

(Start: 9 @17436 has 3 MA's), (15, 17535), (18, 17580), (25, 17724), (34, 17907), (37, 17934), (38, 17958), (41, 18039), (42, 18087), (45, 18105), (57, 18243), (61, 18291), (62, 18303), (67, 18402), (70, 18465), (76, 18531), (77, 18543), (94, 18819), (109, 18981),

Gene: Gustavo_41 Start: 36119, Stop: 37723, Start Num: 10

Candidate Starts for Gustavo_41:

(Start: 6 @36083 has 1 MA's), (Start: 10 @36119 has 18 MA's), (Start: 11 @36134 has 2 MA's), (28, 36485), (29, 36524), (Start: 36 @36626 has 1 MA's), (45, 36788), (46, 36797), (47, 36806), (49, 36812), (50, 36815), (51, 36845), (54, 36875), (55, 36893), (59, 36956), (64, 37016), (66, 37055), (71, 37142), (84, 37331), (89, 37433), (93, 37484), (94, 37505), (95, 37508), (98, 37532), (99, 37547), (101, 37580), (105, 37631), (111, 37685), (112, 37697),

Gene: Hans_42 Start: 36057, Stop: 37670, Start Num: 8

Candidate Starts for Hans_42:

(Start: 8 @36057 has 13 MA's), (13, 36117), (14, 36159), (19, 36228), (25, 36354), (35, 36549), (40, 36654), (50, 36765), (59, 36906), (60, 36909), (62, 36930), (67, 37032), (68, 37086), (71, 37098), (72, 37107), (74, 37119), (78, 37209), (79, 37224), (84, 37281), (90, 37389), (92, 37419), (93, 37431), (96, 37458), (99, 37494), (107, 37587), (110, 37632),

Gene: Inspectinfecti_41 Start: 36503, Stop: 38116, Start Num: 8

Candidate Starts for Inspectinfecti_41:

(Start: 8 @36503 has 13 MA's), (13, 36563), (19, 36674), (25, 36800), (30, 36953), (35, 36995), (40, 37100), (50, 37211), (59, 37352), (60, 37355), (62, 37376), (67, 37478), (68, 37532), (71, 37544), (72, 37553), (74, 37565), (79, 37670), (84, 37727), (90, 37835), (92, 37865), (93, 37877), (96, 37904), (99, 37940), (107, 38033), (110, 38078),

Gene: JKSyngboy_39 Start: 36715, Stop: 38322, Start Num: 10

Candidate Starts for JKSyngboy_39:

(Start: 10 @36715 has 18 MA's), (Start: 11 @36730 has 2 MA's), (26, 37000), (28, 37081), (29, 37120), (Start: 36 @37228 has 1 MA's), (47, 37408), (49, 37414), (50, 37417), (51, 37447), (54, 37477), (55, 37495), (59, 37558), (64, 37618), (71, 37744), (72, 37753), (89, 38035), (93, 38083), (94, 38104), (95, 38107), (97, 38119), (98, 38131), (101, 38179), (111, 38284), (112, 38296),

Gene: Kroos_42 Start: 36880, Stop: 38463, Start Num: 10

Candidate Starts for Kroos_42:

(Start: 6 @36841 has 1 MA's), (Start: 10 @36880 has 18 MA's), (Start: 11 @36895 has 2 MA's), (28, 37246), (29, 37285), (Start: 36 @37369 has 1 MA's), (46, 37540), (47, 37549), (49, 37555), (50, 37558), (51, 37588), (54, 37618), (59, 37699), (64, 37759), (71, 37885), (72, 37894), (86, 38098), (89, 38176), (93, 38224), (94, 38245), (95, 38248), (97, 38260), (98, 38272), (99, 38287), (101, 38320), (112, 38437),

Gene: Kwekel_38 Start: 33851, Stop: 35485, Start Num: 8

Candidate Starts for Kwekel_38:

(Start: 8 @33851 has 13 MA's), (14, 33953), (16, 33971), (17, 33998), (19, 34022), (23, 34082), (25, 34148), (28, 34241), (31, 34310), (33, 34322), (35, 34358), (47, 34565), (50, 34574), (59, 34715), (72, 34916), (84, 35096), (90, 35204), (92, 35234), (93, 35246), (96, 35273),

Gene: Kwobi_42 Start: 36866, Stop: 38449, Start Num: 10

Candidate Starts for Kwobi_42:

(Start: 10 @36866 has 18 MA's), (Start: 11 @36881 has 2 MA's), (26, 37151), (28, 37232), (29, 37271), (Start: 36 @37355 has 1 MA's), (46, 37526), (47, 37535), (49, 37541), (50, 37544), (51, 37574), (54, 37604), (59, 37685), (64, 37745), (71, 37871), (72, 37880), (81, 38006), (89, 38162), (93, 38210), (94, 38231), (95, 38234), (98, 38258), (99, 38273), (101, 38306), (102, 38333), (112, 38423),

Gene: Leonard_40 Start: 36143, Stop: 37756, Start Num: 8

Candidate Starts for Leonard_40:

(Start: 8 @36143 has 13 MA's), (13, 36203), (14, 36245), (19, 36314), (25, 36440), (35, 36635), (40, 36740), (50, 36851), (59, 36992), (60, 36995), (62, 37016), (67, 37118), (68, 37172), (71, 37184), (72,

37193), (74, 37205), (79, 37310), (84, 37367), (90, 37475), (92, 37505), (93, 37517), (96, 37544), (99, 37580), (107, 37673), (110, 37718),

Gene: LilHam_39 Start: 35467, Stop: 37050, Start Num: 10

Candidate Starts for LilHam_39:

(Start: 6 @35428 has 1 MA's), (Start: 10 @35467 has 18 MA's), (Start: 11 @35482 has 2 MA's), (26, 35752), (29, 35872), (Start: 36 @35956 has 1 MA's), (46, 36127), (47, 36136), (49, 36142), (50, 36145), (51, 36175), (54, 36205), (59, 36286), (64, 36346), (71, 36472), (72, 36481), (81, 36607), (89, 36763), (93, 36811), (94, 36832), (95, 36835), (98, 36859), (99, 36874), (101, 36907), (102, 36934), (112, 37024),

Gene: Mahdia_21 Start: 17103, Stop: 18704, Start Num: 9

Candidate Starts for Mahdia_21:

(Start: 9 @17103 has 3 MA's), (15, 17202), (18, 17247), (20, 17298), (25, 17391), (32, 17559), (34, 17577), (37, 17604), (38, 17628), (39, 17676), (42, 17757), (44, 17772), (45, 17775), (48, 17796), (49, 17799), (64, 18009), (67, 18072), (70, 18135), (75, 18183), (76, 18201), (77, 18213), (103, 18591),

Gene: MelBins_41 Start: 36289, Stop: 37902, Start Num: 8

Candidate Starts for MelBins_41:

(Start: 8 @36289 has 13 MA's), (13, 36349), (19, 36460), (25, 36586), (30, 36739), (35, 36781), (40, 36886), (50, 36997), (59, 37138), (60, 37141), (62, 37162), (67, 37264), (68, 37318), (71, 37330), (72, 37339), (74, 37351), (78, 37441), (79, 37456), (84, 37513), (90, 37621), (92, 37651), (93, 37663), (96, 37690), (99, 37726), (107, 37819), (110, 37864),

Gene: Morrissey_22 Start: 18327, Stop: 19910, Start Num: 9

Candidate Starts for Morrissey_22:

(Start: 9 @18327 has 3 MA's), (15, 18426), (18, 18450), (20, 18501), (21, 18522), (25, 18594), (34, 18780), (37, 18813), (38, 18837), (41, 18918), (42, 18966), (45, 18984), (57, 19122), (61, 19170), (62, 19182), (63, 19215), (67, 19281), (70, 19344), (76, 19410), (77, 19422),

Gene: Natkenzie_42 Start: 37710, Stop: 39302, Start Num: 11

Candidate Starts for Natkenzie_42:

(Start: 10 @37695 has 18 MA's), (Start: 11 @37710 has 2 MA's), (17, 37818), (28, 38061), (29, 38100), (35, 38181), (45, 38370), (56, 38499), (59, 38538), (67, 38664), (72, 38739), (74, 38751), (82, 38880), (85, 38931), (87, 38970), (89, 39021), (94, 39087), (96, 39093), (99, 39129), (107, 39222), (110, 39267), (113, 39288),

Gene: Phauci_33 Start: 32992, Stop: 34605, Start Num: 8

Candidate Starts for Phauci_33:

(Start: 8 @32992 has 13 MA's), (13, 33052), (14, 33094), (19, 33163), (25, 33289), (35, 33484), (40, 33589), (50, 33700), (59, 33841), (60, 33844), (62, 33865), (67, 33967), (68, 34021), (71, 34033), (72, 34042), (74, 34054), (78, 34144), (79, 34159), (84, 34216), (90, 34324), (92, 34354), (93, 34366), (96, 34393), (99, 34429), (107, 34522), (110, 34567),

Gene: Phinally_40 Start: 36140, Stop: 37753, Start Num: 8

Candidate Starts for Phinally_40:

(Start: 8 @36140 has 13 MA's), (13, 36200), (14, 36242), (19, 36311), (25, 36437), (35, 36632), (40, 36737), (50, 36848), (59, 36989), (60, 36992), (62, 37013), (67, 37115), (68, 37169), (71, 37181), (72, 37190), (74, 37202), (79, 37307), (84, 37364), (90, 37472), (92, 37502), (93, 37514), (96, 37541), (99, 37577), (107, 37670), (110, 37715),

Gene: Ribeye_42 Start: 37298, Stop: 38881, Start Num: 10

Candidate Starts for Ribeye_42:

(Start: 6 @37259 has 1 MA's), (Start: 10 @37298 has 18 MA's), (Start: 11 @37313 has 2 MA's), (28, 37664), (29, 37703), (Start: 36 @37787 has 1 MA's), (46, 37958), (47, 37967), (49, 37973), (50, 37976), (51, 38006), (54, 38036), (59, 38117), (64, 38177), (71, 38303), (72, 38312), (86, 38516), (89, 38594), (93, 38642), (94, 38663), (95, 38666), (97, 38678), (98, 38690), (99, 38705), (101, 38738), (102, 38765), (112, 38855),

Gene: RoadKill_36 Start: 33414, Stop: 35048, Start Num: 8

Candidate Starts for RoadKill_36:

(Start: 8 @33414 has 13 MA's), (14, 33516), (17, 33561), (19, 33585), (23, 33645), (25, 33711), (28, 33804), (31, 33873), (33, 33885), (35, 33921), (47, 34128), (50, 34137), (59, 34278), (72, 34479), (84, 34659), (90, 34767), (92, 34797), (93, 34809), (96, 34836),

Gene: Sampson_42 Start: 37640, Stop: 39247, Start Num: 10

Candidate Starts for Sampson_42:

(Start: 10 @37640 has 18 MA's), (Start: 11 @37655 has 2 MA's), (17, 37763), (28, 38006), (29, 38045), (35, 38126), (45, 38315), (56, 38444), (59, 38483), (67, 38609), (72, 38684), (74, 38696), (82, 38825), (85, 38876), (87, 38915), (89, 38966), (94, 39032), (96, 39038), (99, 39074), (107, 39167), (110, 39212), (113, 39233),

Gene: Saronaya_41 Start: 36119, Stop: 37723, Start Num: 10

Candidate Starts for Saronaya_41:

(Start: 6 @36083 has 1 MA's), (Start: 10 @36119 has 18 MA's), (Start: 11 @36134 has 2 MA's), (28, 36485), (29, 36524), (Start: 36 @36626 has 1 MA's), (45, 36788), (46, 36797), (47, 36806), (49, 36812), (50, 36815), (51, 36845), (54, 36875), (55, 36893), (59, 36956), (64, 37016), (66, 37055), (71, 37142), (84, 37331), (89, 37433), (93, 37484), (94, 37505), (95, 37508), (98, 37532), (99, 37547), (101, 37580), (105, 37631), (111, 37685), (112, 37697),

Gene: SchottB_40 Start: 37140, Stop: 38723, Start Num: 10

Candidate Starts for SchottB_40:

(Start: 6 @37101 has 1 MA's), (Start: 10 @37140 has 18 MA's), (Start: 11 @37155 has 2 MA's), (26, 37425), (28, 37506), (29, 37545), (Start: 36 @37629 has 1 MA's), (46, 37800), (47, 37809), (49, 37815), (50, 37818), (51, 37848), (54, 37878), (59, 37959), (64, 38019), (71, 38145), (72, 38154), (81, 38280), (89, 38436), (93, 38484), (94, 38505), (95, 38508), (98, 38532), (99, 38547), (101, 38580), (102, 38607), (112, 38697),

Gene: Scioto_43 Start: 37696, Stop: 39303, Start Num: 10

Candidate Starts for Scioto_43:

(Start: 10 @37696 has 18 MA's), (Start: 11 @37711 has 2 MA's), (17, 37819), (28, 38062), (29, 38101), (35, 38182), (45, 38371), (56, 38500), (59, 38539), (67, 38665), (72, 38740), (74, 38752), (82, 38881), (85, 38932), (87, 38971), (89, 39022), (94, 39088), (96, 39094), (99, 39130), (107, 39223), (110, 39268), (113, 39289),

Gene: Tangerine_41 Start: 36012, Stop: 37595, Start Num: 10

Candidate Starts for Tangerine_41:

(Start: 6 @35973 has 1 MA's), (Start: 10 @36012 has 18 MA's), (Start: 11 @36027 has 2 MA's), (28, 36378), (29, 36417), (Start: 36 @36501 has 1 MA's), (46, 36672), (47, 36681), (49, 36687), (50, 36690), (51, 36720), (54, 36750), (59, 36831), (64, 36891), (71, 37017), (72, 37026), (89, 37308), (93, 37356), (94, 37377), (95, 37380), (98, 37404), (99, 37419), (101, 37452), (112, 37569),

Gene: Tardus_43 Start: 37065, Stop: 38660, Start Num: 11

Candidate Starts for Tardus_43:

(Start: 10 @37050 has 18 MA's), (Start: 11 @37065 has 2 MA's), (28, 37416), (29, 37455), (35, 37539), (45, 37728), (56, 37857), (59, 37896), (67, 38022), (72, 38097), (74, 38109), (82, 38238), (85,

38289), (87, 38328), (89, 38379), (94, 38445), (96, 38451), (99, 38487), (107, 38580), (110, 38625), (113, 38646),

Gene: Tiamoceli_39 Start: 34747, Stop: 36381, Start Num: 8

Candidate Starts for Tiamoceli_39:

(Start: 8 @34747 has 13 MA's), (14, 34849), (16, 34867), (17, 34894), (19, 34918), (23, 34978), (25, 35044), (28, 35137), (31, 35206), (33, 35218), (35, 35254), (47, 35461), (50, 35470), (59, 35611), (72, 35812), (84, 35992), (90, 36100), (92, 36130), (93, 36142), (96, 36169),

Gene: Twonlo_36 Start: 33365, Stop: 34999, Start Num: 8

Candidate Starts for Twonlo_36:

(Start: 8 @33365 has 13 MA's), (14, 33467), (17, 33512), (19, 33536), (23, 33596), (25, 33662), (28, 33755), (31, 33824), (33, 33836), (35, 33872), (47, 34079), (50, 34088), (59, 34229), (72, 34430), (84, 34610), (90, 34718), (92, 34748), (93, 34760), (96, 34787),

Gene: Tycho_41 Start: 36099, Stop: 37682, Start Num: 10

Candidate Starts for Tycho_41:

(Start: 6 @36060 has 1 MA's), (Start: 10 @36099 has 18 MA's), (Start: 11 @36114 has 2 MA's), (26, 36384), (28, 36465), (29, 36504), (Start: 36 @36588 has 1 MA's), (46, 36759), (47, 36768), (49, 36774), (50, 36777), (51, 36807), (54, 36837), (59, 36918), (64, 36978), (71, 37104), (72, 37113), (89, 37395), (93, 37443), (94, 37464), (95, 37467), (98, 37491), (99, 37506), (101, 37539), (112, 37656),

Gene: Vasanti_18 Start: 16494, Stop: 17552, Start Num: 36

Candidate Starts for Vasanti_18:

(27, 16344), (Start: 36 @16494 has 1 MA's), (46, 16662), (47, 16671), (49, 16677), (51, 16710), (59, 16821), (63, 16878), (69, 17010), (80, 17127), (91, 17289), (96, 17334), (101, 17403), (112, 17520),

Gene: Verity_41 Start: 37882, Stop: 39492, Start Num: 10

Candidate Starts for Verity_41:

(Start: 10 @37882 has 18 MA's), (Start: 11 @37897 has 2 MA's), (28, 38248), (29, 38287), (35, 38371), (43, 38554), (45, 38560), (59, 38728), (67, 38854), (72, 38929), (74, 38941), (82, 39070), (84, 39109), (85, 39121), (87, 39160), (89, 39211), (94, 39277), (96, 39283), (99, 39319), (107, 39412), (110, 39457), (112, 39475), (113, 39478),

Gene: ViaConlectus_42 Start: 36330, Stop: 37937, Start Num: 10

Candidate Starts for ViaConlectus_42:

(7, 36312), (Start: 10 @36330 has 18 MA's), (Start: 11 @36345 has 2 MA's), (28, 36696), (29, 36735), (35, 36816), (45, 37005), (56, 37134), (59, 37173), (67, 37299), (72, 37374), (74, 37386), (82, 37515), (85, 37566), (87, 37605), (89, 37656), (94, 37722), (96, 37728), (99, 37764), (107, 37857), (110, 37902), (113, 37923),

Gene: YorkOnyx_42 Start: 36358, Stop: 37941, Start Num: 10

Candidate Starts for YorkOnyx_42:

(Start: 6 @36319 has 1 MA's), (Start: 10 @36358 has 18 MA's), (Start: 11 @36373 has 2 MA's), (28, 36724), (29, 36763), (Start: 36 @36847 has 1 MA's), (46, 37018), (47, 37027), (49, 37033), (50, 37036), (51, 37066), (54, 37096), (59, 37177), (64, 37237), (71, 37363), (72, 37372), (86, 37576), (88, 37642), (89, 37654), (93, 37702), (94, 37723), (95, 37726), (97, 37738), (98, 37750), (99, 37765), (101, 37798), (102, 37825), (112, 37915),

Gene: Zipp_41 Start: 37800, Stop: 39395, Start Num: 11

Candidate Starts for Zipp_41:

(Start: 10 @37785 has 18 MA's), (Start: 11 @37800 has 2 MA's), (28, 38151), (29, 38190), (35, 38274), (45, 38463), (56, 38592), (59, 38631), (67, 38757), (74, 38844), (82, 38973), (84, 39012), (85,

39024), (87, 39063), (89, 39114), (93, 39159), (94, 39180), (96, 39186), (99, 39222), (107, 39315), (110, 39360), (112, 39378), (113, 39381), (115, 39387),

Gene: Zitch_45 Start: 36483, Stop: 38093, Start Num: 10

Candidate Starts for Zitch_45:

(Start: 10 @36483 has 18 MA's), (Start: 11 @36498 has 2 MA's), (28, 36849), (29, 36888), (35, 36972), (37, 37002), (43, 37155), (45, 37161), (53, 37245), (56, 37290), (59, 37329), (67, 37455), (72, 37530), (74, 37542), (82, 37671), (84, 37710), (85, 37722), (87, 37761), (89, 37812), (94, 37878), (96, 37884), (99, 37920), (107, 38013), (110, 38058), (113, 38079),