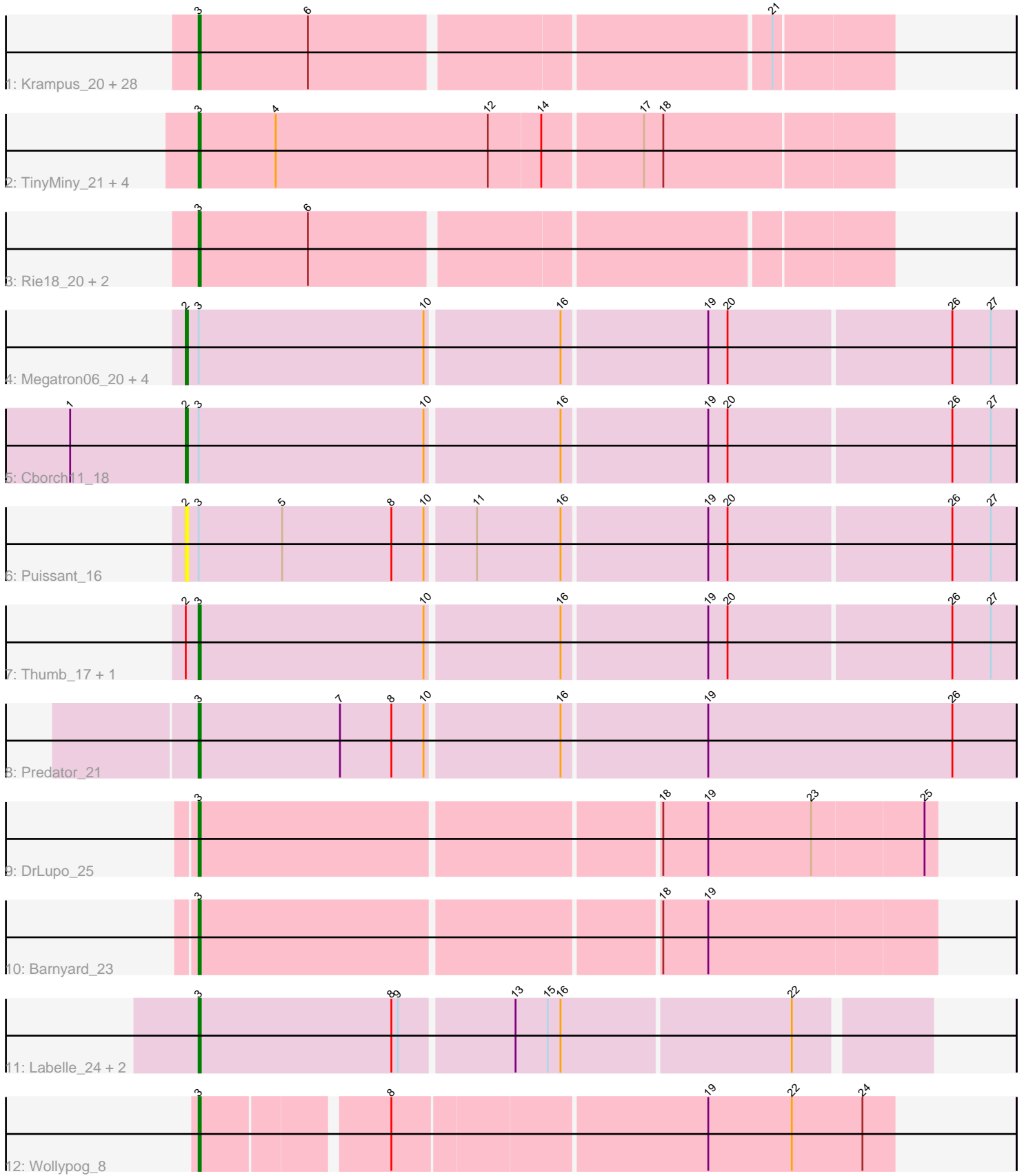


Pham 157919



Note: Tracks are now grouped by subcluster and scaled. Switching in subcluster is indicated by changes in track color. Track scale is now set by default to display the region 30 bp upstream of start 1 to 30 bp downstream of the last possible start. If this default region is judged to be packed too tightly with annotated starts, the track will be further scaled to only show that region of the ORF with annotated starts. This action will be indicated by adding "Zoomed" to the title. For starts, yellow indicates the location of called starts comprised solely of Glimmer/GeneMark auto-annotations, green indicates the location of called starts with at least 1 manual gene annotation.

Pham 157919 Report

This analysis was run 04/13/24 on database version 558.

Pham number 157919 has 53 members, 12 are drafts.

Phages represented in each track:

- Track 1 : Krampus_20, Anakin_20, JingleBells_19, Potty_20, Dauntless_20, Erudite_19, AnnaSerena_20, Neptune_20, FreddieHg_19, Haunter_20, DannyDe_19, Tedro_20, Rachella_20, MortySmith_18, OverHedge_20, PhunaPhoke_20, Cybele_20, Aesir_19, Crestdrop_20, JDawG_19, Kate_20, Poultruss_19, Pharpay_20, Snakehole_21, CoolCookie_24, Chivey_19, Hiddenleaf_19, NarutoRun_20, Gilda_20
- Track 2 : TinyMiny_21, Ajin_22, RikSengupta_21, Sparcetus_21, Kors_22
- Track 3 : Rie18_20, Karate_19, Hager_21
- Track 4 : Megatron06_20, Konstantine_22, Damien_17, Phreeze_17, Beckerton_17
- Track 5 : Cborch11_18
- Track 6 : Puissant_16
- Track 7 : Thumb_17, Oaker_17
- Track 8 : Predator_21
- Track 9 : DrLupo_25
- Track 10 : Barnyard_23
- Track 11 : Labelle_24, Madruga_23, Patience_25
- Track 12 : Wollypog_8

Summary of Final Annotations (See graph section above for start numbers):

The start number called the most often in the published annotations is 3, it was called in 36 of the 41 non-draft genes in the pham.

Genes that call this "Most Annotated" start:

- Aesir_19, Ajin_22, Anakin_20, AnnaSerena_20, Barnyard_23, Chivey_19, CoolCookie_24, Crestdrop_20, Cybele_20, DannyDe_19, Dauntless_20, DrLupo_25, Erudite_19, FreddieHg_19, Gilda_20, Hager_21, Haunter_20, Hiddenleaf_19, JDawG_19, JingleBells_19, Karate_19, Kate_20, Kors_22, Krampus_20, Labelle_24, Madruga_23, MortySmith_18, NarutoRun_20, Neptune_20, Oaker_17, OverHedge_20, Patience_25, Pharpay_20, PhunaPhoke_20, Potty_20, Poultruss_19, Predator_21, Rachella_20, Rie18_20, RikSengupta_21, Snakehole_21, Sparcetus_21, Tedro_20, Thumb_17, TinyMiny_21, Wollypog_8,

Genes that have the "Most Annotated" start but do not call it:

- Beckerton_17, Cborch11_18, Damien_17, Konstantine_22, Megatron06_20, Phreeze_17, Puissant_16,

Genes that do not have the "Most Annotated" start:

-

Summary by start number:

Start 2:

- Found in 9 of 53 (17.0%) of genes in pham
- Manual Annotations of this start: 5 of 41
- Called 77.8% of time when present
- Phage (with cluster) where this start called: Beckerton_17 (H1), Cborch11_18 (H1), Damien_17 (H1), Konstantine_22 (H1), Megatron06_20 (H1), Phreeze_17 (H1), Puissant_16 (H1),

Start 3:

- Found in 53 of 53 (100.0%) of genes in pham
- Manual Annotations of this start: 36 of 41
- Called 86.8% of time when present
- Phage (with cluster) where this start called: Aesir_19 (EF), Ajin_22 (EF), Anakin_20 (EF), AnnaSerena_20 (EF), Barnyard_23 (H2), Chivey_19 (EF), CoolCookie_24 (EF), Crestdrop_20 (EF), Cybele_20 (EF), DannyDe_19 (EF), Dauntless_20 (EF), DrLupo_25 (H2), Erudite_19 (EF), FreddieHg_19 (EF), Gilda_20 (EF), Hager_21 (EF), Haunter_20 (EF), Hiddenleaf_19 (EF), JDawG_19 (EF), JingleBells_19 (EF), Karate_19 (EF), Kate_20 (EF), Kors_22 (EF), Krampus_20 (EF), Labelle_24 (U), Madruga_23 (U), MortySmith_18 (EF), NarutoRun_20 (EF), Neptune_20 (EF), Oaker_17 (H1), OverHedge_20 (EF), Patience_25 (U), Pharpay_20 (EF), PhunaPhoke_20 (EF), Potty_20 (EF), Poultruss_19 (EF), Predator_21 (H1), Rachella_20 (EF), Rie18_20 (EF), RikSengupta_21 (EF), Snakehole_21 (EF), Sparcetus_21 (EF), Tedro_20 (EF), Thumb_17 (H1), TinyMiny_21 (EF), Wollypog_8 (singleton),

Summary by clusters:

There are 5 clusters represented in this pham: H2, singleton, EF, U, H1,

Info for manual annotations of cluster EF:

- Start number 3 was manually annotated 27 times for cluster EF.

Info for manual annotations of cluster H1:

- Start number 2 was manually annotated 5 times for cluster H1.
- Start number 3 was manually annotated 3 times for cluster H1.

Info for manual annotations of cluster H2:

- Start number 3 was manually annotated 2 times for cluster H2.

Info for manual annotations of cluster U:

- Start number 3 was manually annotated 3 times for cluster U.

Gene Information:

Gene: Aesir_19 Start: 11130, Stop: 11438, Start Num: 3
Candidate Starts for Aesir_19:
(Start: 3 @11130 has 36 MA's), (6, 11181), (21, 11385),

Gene: Ajin_22 Start: 11286, Stop: 11603, Start Num: 3
Candidate Starts for Ajin_22:
(Start: 3 @11286 has 36 MA's), (4, 11322), (12, 11421), (14, 11445), (17, 11490), (18, 11499),

Gene: Anakin_20 Start: 11340, Stop: 11648, Start Num: 3
Candidate Starts for Anakin_20:
(Start: 3 @11340 has 36 MA's), (6, 11391), (21, 11595),

Gene: AnnaSerena_20 Start: 11349, Stop: 11657, Start Num: 3
Candidate Starts for AnnaSerena_20:
(Start: 3 @11349 has 36 MA's), (6, 11400), (21, 11604),

Gene: Barnyard_23 Start: 13941, Stop: 14273, Start Num: 3
Candidate Starts for Barnyard_23:
(Start: 3 @13941 has 36 MA's), (18, 14148), (19, 14169),

Gene: Beckerton_17 Start: 12784, Stop: 13161, Start Num: 2
Candidate Starts for Beckerton_17:
(Start: 2 @12784 has 5 MA's), (Start: 3 @12790 has 36 MA's), (10, 12895), (16, 12955), (19, 13021),
(20, 13030), (26, 13132), (27, 13150),

Gene: Cborch11_18 Start: 12247, Stop: 12624, Start Num: 2
Candidate Starts for Cborch11_18:
(1, 12193), (Start: 2 @12247 has 5 MA's), (Start: 3 @12253 has 36 MA's), (10, 12358), (16, 12418),
(19, 12484), (20, 12493), (26, 12595), (27, 12613),

Gene: Chivey_19 Start: 10542, Stop: 10850, Start Num: 3
Candidate Starts for Chivey_19:
(Start: 3 @10542 has 36 MA's), (6, 10593), (21, 10797),

Gene: CoolCookie_24 Start: 11347, Stop: 11655, Start Num: 3
Candidate Starts for CoolCookie_24:
(Start: 3 @11347 has 36 MA's), (6, 11398), (21, 11602),

Gene: Crestdrop_20 Start: 10416, Stop: 10724, Start Num: 3
Candidate Starts for Crestdrop_20:
(Start: 3 @10416 has 36 MA's), (6, 10467), (21, 10671),

Gene: Cybele_20 Start: 11317, Stop: 11625, Start Num: 3
Candidate Starts for Cybele_20:
(Start: 3 @11317 has 36 MA's), (6, 11368), (21, 11572),

Gene: Damien_17 Start: 12246, Stop: 12623, Start Num: 2
Candidate Starts for Damien_17:
(Start: 2 @12246 has 5 MA's), (Start: 3 @12252 has 36 MA's), (10, 12357), (16, 12417), (19, 12483),
(20, 12492), (26, 12594), (27, 12612),

Gene: DannyDe_19 Start: 10534, Stop: 10842, Start Num: 3
Candidate Starts for DannyDe_19:

(Start: 3 @10534 has 36 MA's), (6, 10585), (21, 10789),

Gene: Dauntless_20 Start: 11059, Stop: 11367, Start Num: 3

Candidate Starts for Dauntless_20:

(Start: 3 @11059 has 36 MA's), (6, 11110), (21, 11314),

Gene: DrLupo_25 Start: 14352, Stop: 14684, Start Num: 3

Candidate Starts for DrLupo_25:

(Start: 3 @14352 has 36 MA's), (18, 14559), (19, 14580), (23, 14628), (25, 14679),

Gene: Erudite_19 Start: 11059, Stop: 11367, Start Num: 3

Candidate Starts for Erudite_19:

(Start: 3 @11059 has 36 MA's), (6, 11110), (21, 11314),

Gene: FreddieHg_19 Start: 10558, Stop: 10866, Start Num: 3

Candidate Starts for FreddieHg_19:

(Start: 3 @10558 has 36 MA's), (6, 10609), (21, 10813),

Gene: Gilda_20 Start: 11341, Stop: 11649, Start Num: 3

Candidate Starts for Gilda_20:

(Start: 3 @11341 has 36 MA's), (6, 11392), (21, 11596),

Gene: Hager_21 Start: 10912, Stop: 11220, Start Num: 3

Candidate Starts for Hager_21:

(Start: 3 @10912 has 36 MA's), (6, 10963),

Gene: Haunter_20 Start: 10754, Stop: 11062, Start Num: 3

Candidate Starts for Haunter_20:

(Start: 3 @10754 has 36 MA's), (6, 10805), (21, 11009),

Gene: Hiddenleaf_19 Start: 10542, Stop: 10850, Start Num: 3

Candidate Starts for Hiddenleaf_19:

(Start: 3 @10542 has 36 MA's), (6, 10593), (21, 10797),

Gene: JDawG_19 Start: 11124, Stop: 11432, Start Num: 3

Candidate Starts for JDawG_19:

(Start: 3 @11124 has 36 MA's), (6, 11175), (21, 11379),

Gene: JingleBells_19 Start: 10623, Stop: 10931, Start Num: 3

Candidate Starts for JingleBells_19:

(Start: 3 @10623 has 36 MA's), (6, 10674), (21, 10878),

Gene: Karate_19 Start: 10762, Stop: 11070, Start Num: 3

Candidate Starts for Karate_19:

(Start: 3 @10762 has 36 MA's), (6, 10813),

Gene: Kate_20 Start: 11349, Stop: 11657, Start Num: 3

Candidate Starts for Kate_20:

(Start: 3 @11349 has 36 MA's), (6, 11400), (21, 11604),

Gene: Konstantine_22 Start: 13448, Stop: 13825, Start Num: 2

Candidate Starts for Konstantine_22:

(Start: 2 @13448 has 5 MA's), (Start: 3 @13454 has 36 MA's), (10, 13559), (16, 13619), (19, 13685), (20, 13694), (26, 13796), (27, 13814),

Gene: Kors_22 Start: 11332, Stop: 11649, Start Num: 3

Candidate Starts for Kors_22:

(Start: 3 @11332 has 36 MA's), (4, 11368), (12, 11467), (14, 11491), (17, 11536), (18, 11545),

Gene: Krampus_20 Start: 11347, Stop: 11655, Start Num: 3

Candidate Starts for Krampus_20:

(Start: 3 @11347 has 36 MA's), (6, 11398), (21, 11602),

Gene: Labelle_24 Start: 15501, Stop: 15830, Start Num: 3

Candidate Starts for Labelle_24:

(Start: 3 @15501 has 36 MA's), (8, 15591), (9, 15594), (13, 15645), (15, 15660), (16, 15666), (22, 15771),

Gene: Madruga_23 Start: 15170, Stop: 15499, Start Num: 3

Candidate Starts for Madruga_23:

(Start: 3 @15170 has 36 MA's), (8, 15260), (9, 15263), (13, 15314), (15, 15329), (16, 15335), (22, 15440),

Gene: Megatron06_20 Start: 12781, Stop: 13158, Start Num: 2

Candidate Starts for Megatron06_20:

(Start: 2 @12781 has 5 MA's), (Start: 3 @12787 has 36 MA's), (10, 12892), (16, 12952), (19, 13018), (20, 13027), (26, 13129), (27, 13147),

Gene: MortySmith_18 Start: 10521, Stop: 10829, Start Num: 3

Candidate Starts for MortySmith_18:

(Start: 3 @10521 has 36 MA's), (6, 10572), (21, 10776),

Gene: NarutoRun_20 Start: 11340, Stop: 11648, Start Num: 3

Candidate Starts for NarutoRun_20:

(Start: 3 @11340 has 36 MA's), (6, 11391), (21, 11595),

Gene: Neptune_20 Start: 11317, Stop: 11625, Start Num: 3

Candidate Starts for Neptune_20:

(Start: 3 @11317 has 36 MA's), (6, 11368), (21, 11572),

Gene: Oaker_17 Start: 12511, Stop: 12882, Start Num: 3

Candidate Starts for Oaker_17:

(Start: 2 @12505 has 5 MA's), (Start: 3 @12511 has 36 MA's), (10, 12616), (16, 12676), (19, 12742), (20, 12751), (26, 12853), (27, 12871),

Gene: OverHedge_20 Start: 11314, Stop: 11622, Start Num: 3

Candidate Starts for OverHedge_20:

(Start: 3 @11314 has 36 MA's), (6, 11365), (21, 11569),

Gene: Patience_25 Start: 16060, Stop: 16389, Start Num: 3

Candidate Starts for Patience_25:

(Start: 3 @16060 has 36 MA's), (8, 16150), (9, 16153), (13, 16204), (15, 16219), (16, 16225), (22, 16330),

Gene: Pharpay_20 Start: 11362, Stop: 11670, Start Num: 3

Candidate Starts for Pharpay_20:
(Start: 3 @11362 has 36 MA's), (6, 11413), (21, 11617),

Gene: Phreeze_17 Start: 12246, Stop: 12623, Start Num: 2
Candidate Starts for Phreeze_17:
(Start: 2 @12246 has 5 MA's), (Start: 3 @12252 has 36 MA's), (10, 12357), (16, 12417), (19, 12483),
(20, 12492), (26, 12594), (27, 12612),

Gene: PhunaPhoke_20 Start: 11335, Stop: 11643, Start Num: 3
Candidate Starts for PhunaPhoke_20:
(Start: 3 @11335 has 36 MA's), (6, 11386), (21, 11590),

Gene: Potty_20 Start: 11340, Stop: 11648, Start Num: 3
Candidate Starts for Potty_20:
(Start: 3 @11340 has 36 MA's), (6, 11391), (21, 11595),

Gene: Poultruss_19 Start: 11113, Stop: 11421, Start Num: 3
Candidate Starts for Poultruss_19:
(Start: 3 @11113 has 36 MA's), (6, 11164), (21, 11368),

Gene: Predator_21 Start: 13774, Stop: 14148, Start Num: 3
Candidate Starts for Predator_21:
(Start: 3 @13774 has 36 MA's), (7, 13840), (8, 13864), (10, 13879), (16, 13939), (19, 14005), (26,
14119),

Gene: Puissant_16 Start: 12702, Stop: 13079, Start Num: 2
Candidate Starts for Puissant_16:
(Start: 2 @12702 has 5 MA's), (Start: 3 @12708 has 36 MA's), (5, 12747), (8, 12798), (10, 12813),
(11, 12834), (16, 12873), (19, 12939), (20, 12948), (26, 13050), (27, 13068),

Gene: Rachella_20 Start: 11343, Stop: 11651, Start Num: 3
Candidate Starts for Rachella_20:
(Start: 3 @11343 has 36 MA's), (6, 11394), (21, 11598),

Gene: Rie18_20 Start: 10694, Stop: 11002, Start Num: 3
Candidate Starts for Rie18_20:
(Start: 3 @10694 has 36 MA's), (6, 10745),

Gene: RikSengupta_21 Start: 11369, Stop: 11686, Start Num: 3
Candidate Starts for RikSengupta_21:
(Start: 3 @11369 has 36 MA's), (4, 11405), (12, 11504), (14, 11528), (17, 11573), (18, 11582),

Gene: Snakehole_21 Start: 10639, Stop: 10947, Start Num: 3
Candidate Starts for Snakehole_21:
(Start: 3 @10639 has 36 MA's), (6, 10690), (21, 10894),

Gene: Sparcetus_21 Start: 11248, Stop: 11565, Start Num: 3
Candidate Starts for Sparcetus_21:
(Start: 3 @11248 has 36 MA's), (4, 11284), (12, 11383), (14, 11407), (17, 11452), (18, 11461),

Gene: Tedro_20 Start: 10813, Stop: 11121, Start Num: 3
Candidate Starts for Tedro_20:
(Start: 3 @10813 has 36 MA's), (6, 10864), (21, 11068),

Gene: Thumb_17 Start: 12253, Stop: 12624, Start Num: 3

Candidate Starts for Thumb_17:

(Start: 2 @12247 has 5 MA's), (Start: 3 @12253 has 36 MA's), (10, 12358), (16, 12418), (19, 12484), (20, 12493), (26, 12595), (27, 12613),

Gene: TinyMiny_21 Start: 11267, Stop: 11584, Start Num: 3

Candidate Starts for TinyMiny_21:

(Start: 3 @11267 has 36 MA's), (4, 11303), (12, 11402), (14, 11426), (17, 11471), (18, 11480),

Gene: Wollypog_8 Start: 7934, Stop: 8242, Start Num: 3

Candidate Starts for Wollypog_8:

(Start: 3 @7934 has 36 MA's), (8, 8015), (19, 8156), (22, 8195), (24, 8228),