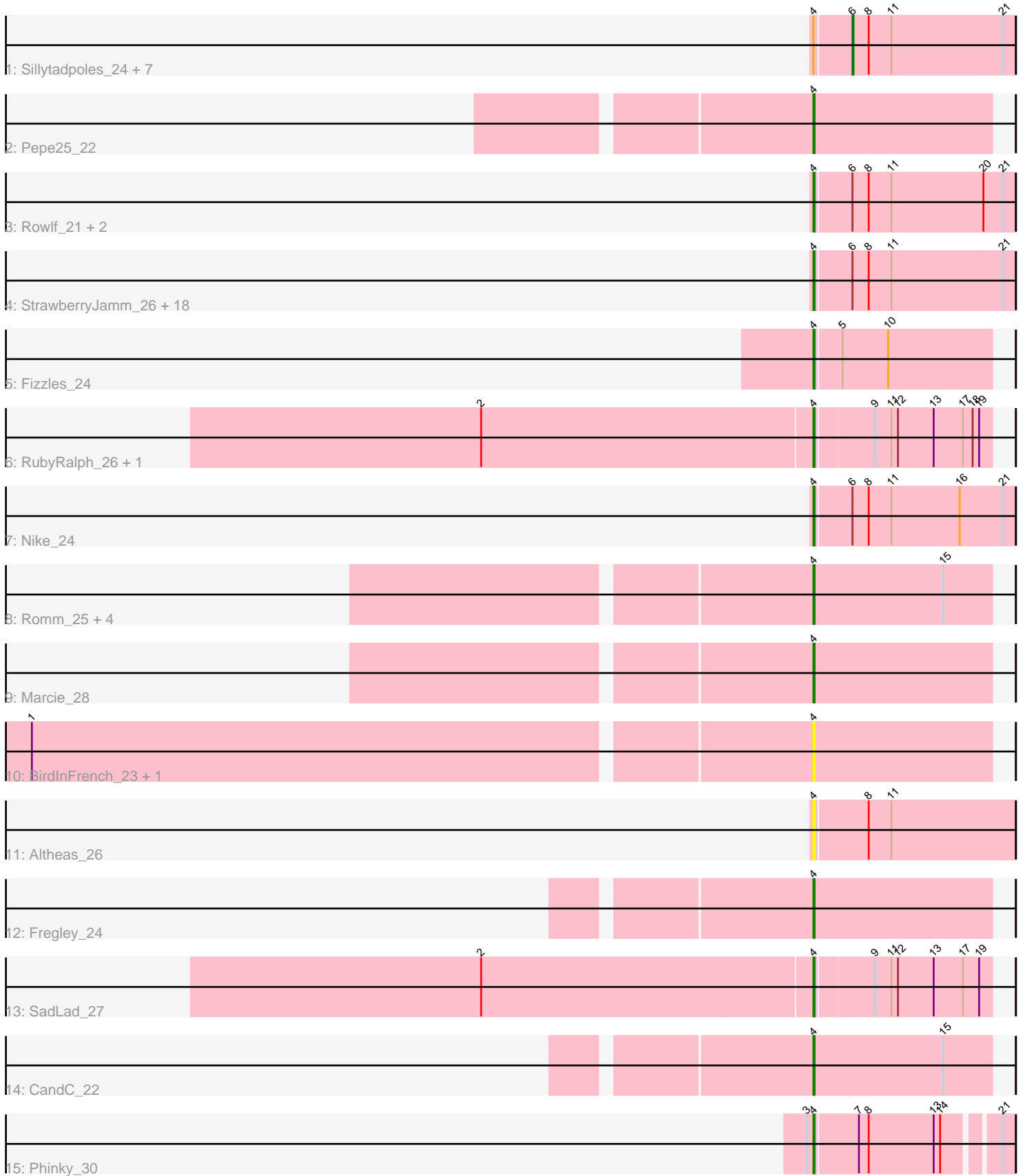


Pham 157950



Note: Tracks are now grouped by subcluster and scaled. Switching in subcluster is indicated by changes in track color. Track scale is now set by default to display the region 30 bp upstream of start 1 to 30 bp downstream of the last possible start. If this default region is judged to be packed too tightly with annotated starts, the track will be further scaled to only show that region of the ORF with annotated starts. This action will be indicated by adding "Zoomed" to the title. For starts, yellow indicates the location of called starts comprised solely of Glimmer/GeneMark auto-annotations, green indicates the location of called starts with at least 1 manual gene annotation.

Pham 157950 Report

This analysis was run 04/13/24 on database version 558.

Pham number 157950 has 48 members, 12 are drafts.

Phages represented in each track:

- Track 1 : Sillytadpoles_24, Kyva_26, Llemily_24, Zhafia_27, Judebell_26, DonaldDuck_24, Tissue_24, BabyDotz_23
- Track 2 : Pepe25_22
- Track 3 : Rowlf_21, Hyperion_23, Zagie_24
- Track 4 : StrawberryJamm_26, Blab_22, Squash_26, Jehoshaphat_26, Gazebo_23, Grassboy_25, AluminumJesus_22, Teehee_25, Wayne3_25, Phabia_24, Quammi_22, Namago_24, SallyK_25, Mashley_22, Lonelysoil_23, Rudy_22, Viceroy_23, Casend_25, Wheelie_23
- Track 5 : Fizzles_24
- Track 6 : RubyRalph_26, Fransoyer_26
- Track 7 : Nike_24
- Track 8 : Romm_25, RobinRose_25, OneinaGillian_23, Kelcole_22, Tempo_23
- Track 9 : Marcie_28
- Track 10 : BirdInFrench_23, Wilca_23
- Track 11 : Altheas_26
- Track 12 : Fregley_24
- Track 13 : SadLad_27
- Track 14 : CandC_22
- Track 15 : Phinky_30

Summary of Final Annotations (See graph section above for start numbers):

The start number called the most often in the published annotations is 4, it was called in 35 of the 36 non-draft genes in the pham.

Genes that call this "Most Annotated" start:

- Altheas_26, AluminumJesus_22, BirdInFrench_23, Blab_22, CandC_22, Casend_25, Fizzles_24, Fransoyer_26, Fregley_24, Gazebo_23, Grassboy_25, Hyperion_23, Jehoshaphat_26, Kelcole_22, Lonelysoil_23, Marcie_28, Mashley_22, Namago_24, Nike_24, OneinaGillian_23, Pepe25_22, Phabia_24, Phinky_30, Quammi_22, RobinRose_25, Romm_25, Rowlf_21, RubyRalph_26, Rudy_22, SadLad_27, SallyK_25, Squash_26, StrawberryJamm_26, Teehee_25, Tempo_23, Viceroy_23, Wayne3_25, Wheelie_23, Wilca_23, Zagie_24,

Genes that have the "Most Annotated" start but do not call it:

- BabyDotz_23, DonaldDuck_24, Judebell_26, Kyva_26, Llemily_24, Sillytadpoles_24, Tissue_24, Zhafia_27,

Genes that do not have the "Most Annotated" start:

-

Summary by start number:

Start 4:

- Found in 48 of 48 (100.0%) of genes in pham
- Manual Annotations of this start: 35 of 36
- Called 83.3% of time when present
- Phage (with cluster) where this start called: Altheas_26 (EG), AluminumJesus_22 (EG), BirdInFrench_23 (EG), Blab_22 (EG), CandC_22 (EG), Casend_25 (EG), Fizzles_24 (EG), Fransoyer_26 (EG), Fregley_24 (EG), Gazebo_23 (EG), Grassboy_25 (EG), Hyperion_23 (EG), Jehoshaphat_26 (EG), Kelcole_22 (EG), Lonelysoil_23 (EG), Marcie_28 (EG), Mashley_22 (EG), Namago_24 (EG), Nike_24 (EG), OneinaGillian_23 (EG), Pepe25_22 (EG), Phabia_24 (EG), Phinky_30 (EG), Quammi_22 (EG), RobinRose_25 (EG), Romm_25 (EG), Rowlf_21 (EG), RubyRalph_26 (EG), Rudy_22 (EG), SadLad_27 (EG), SallyK_25 (EG), Squash_26 (EG), StrawberryJamm_26 (EG), Teehee_25 (EG), Tempo_23 (EG), Viceroy_23 (EG), Wayne3_25 (EG), Wheelie_23 (EG), Wilca_23 (EG), Zagie_24 (EG),

Start 6:

- Found in 31 of 48 (64.6%) of genes in pham
- Manual Annotations of this start: 1 of 36
- Called 25.8% of time when present
- Phage (with cluster) where this start called: BabyDotz_23 (EG), DonaldDuck_24 (EG), Judebell_26 (EG), Kyva_26 (EG), Llemily_24 (EG), Sillytadpoles_24 (EG), Tissue_24 (EG), Zhafia_27 (EG),

Summary by clusters:

There is one cluster represented in this pham: EG

Info for manual annotations of cluster EG:

- Start number 4 was manually annotated 35 times for cluster EG.
- Start number 6 was manually annotated 1 time for cluster EG.

Gene Information:

Gene: Altheas_26 Start: 14178, Stop: 14360, Start Num: 4

Candidate Starts for Altheas_26:

(Start: 4 @14178 has 35 MA's), (8, 14226), (11, 14247),

Gene: AluminumJesus_22 Start: 13555, Stop: 13737, Start Num: 4

Candidate Starts for AluminumJesus_22:

(Start: 4 @13555 has 35 MA's), (Start: 6 @13588 has 1 MA's), (8, 13603), (11, 13624), (21, 13726),

Gene: BabyDotz_23 Start: 13829, Stop: 13978, Start Num: 6

Candidate Starts for BabyDotz_23:

(Start: 4 @13796 has 35 MA's), (Start: 6 @13829 has 1 MA's), (8, 13844), (11, 13865), (21, 13967),

Gene: BirdInFrench_23 Start: 12700, Stop: 12864, Start Num: 4

Candidate Starts for BirdInFrench_23:

(1, 11998), (Start: 4 @12700 has 35 MA's),

Gene: Blab_22 Start: 13431, Stop: 13613, Start Num: 4

Candidate Starts for Blab_22:

(Start: 4 @13431 has 35 MA's), (Start: 6 @13464 has 1 MA's), (8, 13479), (11, 13500), (21, 13602),

Gene: CandC_22 Start: 12305, Stop: 12469, Start Num: 4

Candidate Starts for CandC_22:

(Start: 4 @12305 has 35 MA's), (15, 12425),

Gene: Casend_25 Start: 14142, Stop: 14324, Start Num: 4

Candidate Starts for Casend_25:

(Start: 4 @14142 has 35 MA's), (Start: 6 @14175 has 1 MA's), (8, 14190), (11, 14211), (21, 14313),

Gene: DonaldDuck_24 Start: 13521, Stop: 13670, Start Num: 6

Candidate Starts for DonaldDuck_24:

(Start: 4 @13488 has 35 MA's), (Start: 6 @13521 has 1 MA's), (8, 13536), (11, 13557), (21, 13659),

Gene: Fizzles_24 Start: 13469, Stop: 13630, Start Num: 4

Candidate Starts for Fizzles_24:

(Start: 4 @13469 has 35 MA's), (5, 13493), (10, 13535),

Gene: Fransoyer_26 Start: 13543, Stop: 13701, Start Num: 4

Candidate Starts for Fransoyer_26:

(2, 13240), (Start: 4 @13543 has 35 MA's), (9, 13594), (11, 13609), (12, 13615), (13, 13648), (17, 13675), (18, 13684), (19, 13690),

Gene: Fregley_24 Start: 12878, Stop: 13042, Start Num: 4

Candidate Starts for Fregley_24:

(Start: 4 @12878 has 35 MA's),

Gene: Gazebo_23 Start: 13997, Stop: 14179, Start Num: 4

Candidate Starts for Gazebo_23:

(Start: 4 @13997 has 35 MA's), (Start: 6 @14030 has 1 MA's), (8, 14045), (11, 14066), (21, 14168),

Gene: Grassboy_25 Start: 14164, Stop: 14346, Start Num: 4

Candidate Starts for Grassboy_25:

(Start: 4 @14164 has 35 MA's), (Start: 6 @14197 has 1 MA's), (8, 14212), (11, 14233), (21, 14335),

Gene: Hyperion_23 Start: 13957, Stop: 14139, Start Num: 4

Candidate Starts for Hyperion_23:

(Start: 4 @13957 has 35 MA's), (Start: 6 @13990 has 1 MA's), (8, 14005), (11, 14026), (20, 14110), (21, 14128),

Gene: Jehoshaphat_26 Start: 14407, Stop: 14589, Start Num: 4

Candidate Starts for Jehoshaphat_26:

(Start: 4 @14407 has 35 MA's), (Start: 6 @14440 has 1 MA's), (8, 14455), (11, 14476), (21, 14578),

Gene: Judebell_26 Start: 13981, Stop: 14130, Start Num: 6
Candidate Starts for Judebell_26:
(Start: 4 @13948 has 35 MA's), (Start: 6 @13981 has 1 MA's), (8, 13996), (11, 14017), (21, 14119),

Gene: Kelcole_22 Start: 12730, Stop: 12894, Start Num: 4
Candidate Starts for Kelcole_22:
(Start: 4 @12730 has 35 MA's), (15, 12850),

Gene: Kyva_26 Start: 14232, Stop: 14381, Start Num: 6
Candidate Starts for Kyva_26:
(Start: 4 @14199 has 35 MA's), (Start: 6 @14232 has 1 MA's), (8, 14247), (11, 14268), (21, 14370),

Gene: Llemily_24 Start: 13216, Stop: 13365, Start Num: 6
Candidate Starts for Llemily_24:
(Start: 4 @13183 has 35 MA's), (Start: 6 @13216 has 1 MA's), (8, 13231), (11, 13252), (21, 13354),

Gene: Lonelysoil_23 Start: 13428, Stop: 13610, Start Num: 4
Candidate Starts for Lonelysoil_23:
(Start: 4 @13428 has 35 MA's), (Start: 6 @13461 has 1 MA's), (8, 13476), (11, 13497), (21, 13599),

Gene: Marcie_28 Start: 13405, Stop: 13569, Start Num: 4
Candidate Starts for Marcie_28:
(Start: 4 @13405 has 35 MA's),

Gene: Mashley_22 Start: 13768, Stop: 13950, Start Num: 4
Candidate Starts for Mashley_22:
(Start: 4 @13768 has 35 MA's), (Start: 6 @13801 has 1 MA's), (8, 13816), (11, 13837), (21, 13939),

Gene: Namago_24 Start: 13329, Stop: 13511, Start Num: 4
Candidate Starts for Namago_24:
(Start: 4 @13329 has 35 MA's), (Start: 6 @13362 has 1 MA's), (8, 13377), (11, 13398), (21, 13500),

Gene: Nike_24 Start: 14227, Stop: 14409, Start Num: 4
Candidate Starts for Nike_24:
(Start: 4 @14227 has 35 MA's), (Start: 6 @14260 has 1 MA's), (8, 14275), (11, 14296), (16, 14359), (21, 14398),

Gene: OneinaGillian_23 Start: 12380, Stop: 12544, Start Num: 4
Candidate Starts for OneinaGillian_23:
(Start: 4 @12380 has 35 MA's), (15, 12500),

Gene: Pepe25_22 Start: 12717, Stop: 12881, Start Num: 4
Candidate Starts for Pepe25_22:
(Start: 4 @12717 has 35 MA's),

Gene: Phabia_24 Start: 13601, Stop: 13783, Start Num: 4
Candidate Starts for Phabia_24:
(Start: 4 @13601 has 35 MA's), (Start: 6 @13634 has 1 MA's), (8, 13649), (11, 13670), (21, 13772),

Gene: Phinky_30 Start: 14485, Stop: 14655, Start Num: 4
Candidate Starts for Phinky_30:
(3, 14479), (Start: 4 @14485 has 35 MA's), (7, 14524), (8, 14533), (13, 14593), (14, 14599), (21, 14644),

Gene: Quammi_22 Start: 13172, Stop: 13354, Start Num: 4
Candidate Starts for Quammi_22:
(Start: 4 @13172 has 35 MA's), (Start: 6 @13205 has 1 MA's), (8, 13220), (11, 13241), (21, 13343),

Gene: RobinRose_25 Start: 12881, Stop: 13045, Start Num: 4
Candidate Starts for RobinRose_25:
(Start: 4 @12881 has 35 MA's), (15, 13001),

Gene: Romm_25 Start: 12881, Stop: 13045, Start Num: 4
Candidate Starts for Romm_25:
(Start: 4 @12881 has 35 MA's), (15, 13001),

Gene: Rowlf_21 Start: 12930, Stop: 13112, Start Num: 4
Candidate Starts for Rowlf_21:
(Start: 4 @12930 has 35 MA's), (Start: 6 @12963 has 1 MA's), (8, 12978), (11, 12999), (20, 13083),
(21, 13101),

Gene: RubyRalph_26 Start: 13477, Stop: 13635, Start Num: 4
Candidate Starts for RubyRalph_26:
(2, 13174), (Start: 4 @13477 has 35 MA's), (9, 13528), (11, 13543), (12, 13549), (13, 13582), (17,
13609), (18, 13618), (19, 13624),

Gene: Rudy_22 Start: 13172, Stop: 13354, Start Num: 4
Candidate Starts for Rudy_22:
(Start: 4 @13172 has 35 MA's), (Start: 6 @13205 has 1 MA's), (8, 13220), (11, 13241), (21, 13343),

Gene: SadLad_27 Start: 13934, Stop: 14092, Start Num: 4
Candidate Starts for SadLad_27:
(2, 13631), (Start: 4 @13934 has 35 MA's), (9, 13985), (11, 14000), (12, 14006), (13, 14039), (17,
14066), (19, 14081),

Gene: SallyK_25 Start: 14324, Stop: 14506, Start Num: 4
Candidate Starts for SallyK_25:
(Start: 4 @14324 has 35 MA's), (Start: 6 @14357 has 1 MA's), (8, 14372), (11, 14393), (21, 14495),

Gene: Sillytadpoles_24 Start: 13203, Stop: 13352, Start Num: 6
Candidate Starts for Sillytadpoles_24:
(Start: 4 @13170 has 35 MA's), (Start: 6 @13203 has 1 MA's), (8, 13218), (11, 13239), (21, 13341),

Gene: Squash_26 Start: 14240, Stop: 14422, Start Num: 4
Candidate Starts for Squash_26:
(Start: 4 @14240 has 35 MA's), (Start: 6 @14273 has 1 MA's), (8, 14288), (11, 14309), (21, 14411),

Gene: StrawberryJamm_26 Start: 13472, Stop: 13654, Start Num: 4
Candidate Starts for StrawberryJamm_26:
(Start: 4 @13472 has 35 MA's), (Start: 6 @13505 has 1 MA's), (8, 13520), (11, 13541), (21, 13643),

Gene: Teehee_25 Start: 14407, Stop: 14589, Start Num: 4
Candidate Starts for Teehee_25:
(Start: 4 @14407 has 35 MA's), (Start: 6 @14440 has 1 MA's), (8, 14455), (11, 14476), (21, 14578),

Gene: Tempo_23 Start: 12757, Stop: 12921, Start Num: 4

Candidate Starts for Tempo_23:
(Start: 4 @12757 has 35 MA's), (15, 12877),

Gene: Tissue_24 Start: 14005, Stop: 14154, Start Num: 6
Candidate Starts for Tissue_24:
(Start: 4 @13972 has 35 MA's), (Start: 6 @14005 has 1 MA's), (8, 14020), (11, 14041), (21, 14143),

Gene: Viceroy_23 Start: 13172, Stop: 13354, Start Num: 4
Candidate Starts for Viceroy_23:
(Start: 4 @13172 has 35 MA's), (Start: 6 @13205 has 1 MA's), (8, 13220), (11, 13241), (21, 13343),

Gene: Wayne3_25 Start: 14137, Stop: 14319, Start Num: 4
Candidate Starts for Wayne3_25:
(Start: 4 @14137 has 35 MA's), (Start: 6 @14170 has 1 MA's), (8, 14185), (11, 14206), (21, 14308),

Gene: Wheelie_23 Start: 13488, Stop: 13670, Start Num: 4
Candidate Starts for Wheelie_23:
(Start: 4 @13488 has 35 MA's), (Start: 6 @13521 has 1 MA's), (8, 13536), (11, 13557), (21, 13659),

Gene: Wilca_23 Start: 12700, Stop: 12864, Start Num: 4
Candidate Starts for Wilca_23:
(1, 11998), (Start: 4 @12700 has 35 MA's),

Gene: Zagie_24 Start: 13676, Stop: 13858, Start Num: 4
Candidate Starts for Zagie_24:
(Start: 4 @13676 has 35 MA's), (Start: 6 @13709 has 1 MA's), (8, 13724), (11, 13745), (20, 13829),
(21, 13847),

Gene: Zhafia_27 Start: 14032, Stop: 14181, Start Num: 6
Candidate Starts for Zhafia_27:
(Start: 4 @13999 has 35 MA's), (Start: 6 @14032 has 1 MA's), (8, 14047), (11, 14068), (21, 14170),