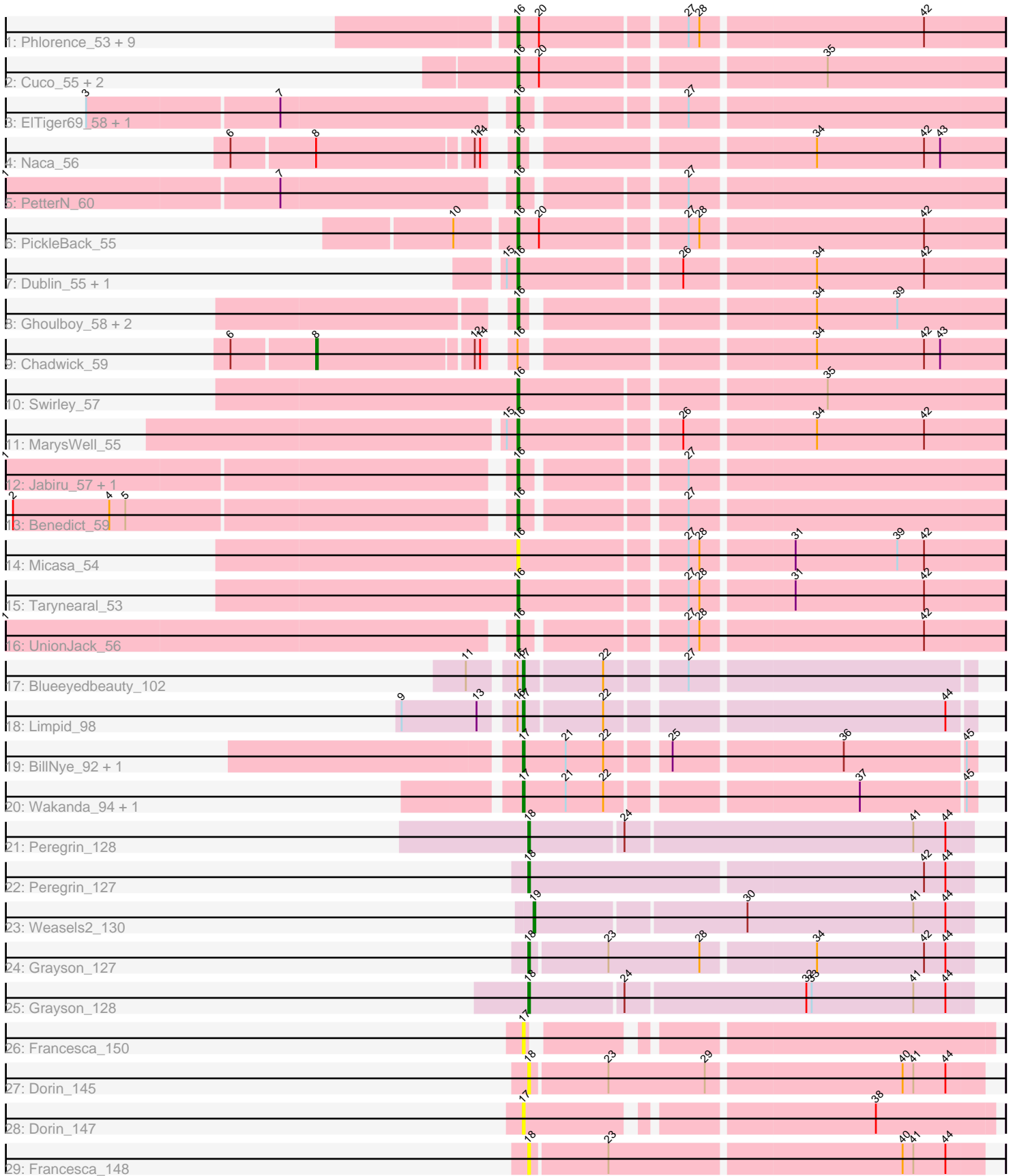


Pham 157964



Note: Tracks are now grouped by subcluster and scaled. Switching in subcluster is indicated by changes in track color. Track scale is now set by default to display the region 30 bp upstream of start 1 to 30 bp downstream of the last possible start. If this default region is judged to be packed too tightly with annotated starts, the track will be further scaled to only show that region of the ORF with annotated starts. This action will be indicated by adding "Zoomed" to the title. For starts, yellow indicates the location of called starts comprised solely of Glimmer/GeneMark auto-annotations, green indicates the location of called starts with at least 1 manual gene annotation.

Pham 157964 Report

This analysis was run 04/13/24 on database version 558.

Pham number 157964 has 47 members, 5 are drafts.

Phages represented in each track:

- Track 1 : Phlorence_53, Discoknowium_53, Jovo_55, Lev2_55, Archetta_54, Conspiracy_55, ForGetIt_55, Tiger_54, Aragog_54, AgentM_54
- Track 2 : Cuco_55, Coog_54, Midas2_54
- Track 3 : EITiger69_58, Airmid_56
- Track 4 : Naca_56
- Track 5 : PetterN_60
- Track 6 : PickleBack_55
- Track 7 : Dublin_55, Theia_54
- Track 8 : Ghoulboy_58, SydNat_58, Zolita_57
- Track 9 : Chadwick_59
- Track 10 : Swirley_57
- Track 11 : MarysWell_55
- Track 12 : Jabiru_57, Scorpia_60
- Track 13 : Benedict_59
- Track 14 : Micasa_54
- Track 15 : Tarynearal_53
- Track 16 : UnionJack_56
- Track 17 : Blueeyedbeauty_102
- Track 18 : Limpid_98
- Track 19 : BillNye_92, Circinus_93
- Track 20 : Wakanda_94, Muntaha_96
- Track 21 : Peregrin_128
- Track 22 : Peregrin_127
- Track 23 : Weasels2_130
- Track 24 : Grayson_127
- Track 25 : Grayson_128
- Track 26 : Francesca_150
- Track 27 : Dorin_145
- Track 28 : Dorin_147
- Track 29 : Francesca_148

Summary of Final Annotations (See graph section above for start numbers):

The start number called the most often in the published annotations is 16, it was called in 30 of the 42 non-draft genes in the pham.

Genes that call this "Most Annotated" start:

- AgentM_54, Airmid_56, Aragog_54, Archetta_54, Benedict_59, Conspiracy_55, Coog_54, Cuco_55, Discoknowium_53, Dublin_55, ElTiger69_58, ForGetIt_55, Ghoulboy_58, Jabiru_57, Jovo_55, Lev2_55, MarysWell_55, Micasa_54, Midas2_54, Naca_56, PetterN_60, Phlorence_53, PickleBack_55, Scorpia_60, Swirley_57, SydNat_58, Tarynearal_53, Theia_54, Tiger_54, UnionJack_56, Zolita_57,

Genes that have the "Most Annotated" start but do not call it:

- Blueeyedbeauty_102, Chadwick_59, Limpid_98,

Genes that do not have the "Most Annotated" start:

- BillNye_92, Circinus_93, Dorin_145, Dorin_147, Francesca_148, Francesca_150, Grayson_127, Grayson_128, Muntaha_96, Peregrin_127, Peregrin_128, Wakanda_94, Weasels2_130,

Summary by start number:

Start 8:

- Found in 2 of 47 (4.3%) of genes in pham
- Manual Annotations of this start: 1 of 42
- Called 50.0% of time when present
- Phage (with cluster) where this start called: Chadwick_59 (A5),

Start 16:

- Found in 34 of 47 (72.3%) of genes in pham
- Manual Annotations of this start: 30 of 42
- Called 91.2% of time when present
- Phage (with cluster) where this start called: AgentM_54 (A5), Airmid_56 (A5), Aragog_54 (A5), Archetta_54 (A5), Benedict_59 (A5), Conspiracy_55 (A5), Coog_54 (A5), Cuco_55 (A5), Discoknowium_53 (A5), Dublin_55 (A5), ElTiger69_58 (A5), ForGetIt_55 (A5), Ghoulboy_58 (A5), Jabiru_57 (A5), Jovo_55 (A5), Lev2_55 (A5), MarysWell_55 (A5), Micasa_54 (A5), Midas2_54 (A5), Naca_56 (A5), PetterN_60 (A5), Phlorence_53 (A5), PickleBack_55 (A5), Scorpia_60 (A5), Swirley_57 (A5), SydNat_58 (A5), Tarynearal_53 (A5), Theia_54 (A5), Tiger_54 (A5), UnionJack_56 (A5), Zolita_57 (A5),

Start 17:

- Found in 8 of 47 (17.0%) of genes in pham
- Manual Annotations of this start: 6 of 42
- Called 100.0% of time when present
- Phage (with cluster) where this start called: BillNye_92 (BK2), Blueeyedbeauty_102 (BK1), Circinus_93 (BK2), Dorin_147 (CG), Francesca_150 (CG), Limpid_98 (BK1), Muntaha_96 (BK2), Wakanda_94 (BK2),

Start 18:

- Found in 6 of 47 (12.8%) of genes in pham
- Manual Annotations of this start: 4 of 42
- Called 100.0% of time when present
- Phage (with cluster) where this start called: Dorin_145 (CG), Francesca_148 (CG), Grayson_127 (CB), Grayson_128 (CB), Peregrin_127 (CB), Peregrin_128 (CB),

Start 19:

- Found in 1 of 47 (2.1%) of genes in pham
- Manual Annotations of this start: 1 of 42
- Called 100.0% of time when present
- Phage (with cluster) where this start called: Weasels2_130 (CB),

Summary by clusters:

There are 5 clusters represented in this pham: CG, CB, A5, BK1, BK2,

Info for manual annotations of cluster A5:

- Start number 8 was manually annotated 1 time for cluster A5.
- Start number 16 was manually annotated 30 times for cluster A5.

Info for manual annotations of cluster BK1:

- Start number 17 was manually annotated 2 times for cluster BK1.

Info for manual annotations of cluster BK2:

- Start number 17 was manually annotated 4 times for cluster BK2.

Info for manual annotations of cluster CB:

- Start number 18 was manually annotated 4 times for cluster CB.
- Start number 19 was manually annotated 1 time for cluster CB.

Gene Information:

Gene: AgentM_54 Start: 38609, Stop: 38352, Start Num: 16

Candidate Starts for AgentM_54:

(Start: 16 @38609 has 30 MA's), (20, 38597), (27, 38522), (28, 38516), (42, 38396),

Gene: Airmid_56 Start: 38747, Stop: 38496, Start Num: 16

Candidate Starts for Airmid_56:

(3, 38972), (7, 38867), (Start: 16 @38747 has 30 MA's), (27, 38666),

Gene: Aragog_54 Start: 38629, Stop: 38372, Start Num: 16

Candidate Starts for Aragog_54:

(Start: 16 @38629 has 30 MA's), (20, 38617), (27, 38542), (28, 38536), (42, 38416),

Gene: Archetta_54 Start: 39039, Stop: 38782, Start Num: 16

Candidate Starts for Archetta_54:

(Start: 16 @39039 has 30 MA's), (20, 39027), (27, 38952), (28, 38946), (42, 38826),

Gene: Benedict_59 Start: 38995, Stop: 38744, Start Num: 16

Candidate Starts for Benedict_59:

(2, 39262), (4, 39208), (5, 39199), (Start: 16 @38995 has 30 MA's), (27, 38914),

Gene: BillNye_92 Start: 68857, Stop: 69093, Start Num: 17

Candidate Starts for BillNye_92:

(Start: 17 @68857 has 6 MA's), (21, 68881), (22, 68902), (25, 68932), (36, 69022), (45, 69088),

Gene: Blueeyedbeauty_102 Start: 67743, Stop: 67976, Start Num: 17
Candidate Starts for Blueeyedbeauty_102:
(11, 67719), (Start: 16 @67740 has 30 MA's), (Start: 17 @67743 has 6 MA's), (22, 67785), (27, 67824),

Gene: Chadwick_59 Start: 38932, Stop: 38585, Start Num: 8
Candidate Starts for Chadwick_59:
(6, 38977), (Start: 8 @38932 has 1 MA's), (12, 38848), (14, 38845), (Start: 16 @38836 has 30 MA's), (34, 38689), (42, 38629), (43, 38620),

Gene: Circinus_93 Start: 68844, Stop: 69080, Start Num: 17
Candidate Starts for Circinus_93:
(Start: 17 @68844 has 6 MA's), (21, 68868), (22, 68889), (25, 68919), (36, 69009), (45, 69075),

Gene: Conspiracy_55 Start: 38851, Stop: 38594, Start Num: 16
Candidate Starts for Conspiracy_55:
(Start: 16 @38851 has 30 MA's), (20, 38839), (27, 38764), (28, 38758), (42, 38638),

Gene: Coog_54 Start: 39045, Stop: 38788, Start Num: 16
Candidate Starts for Coog_54:
(Start: 16 @39045 has 30 MA's), (20, 39033), (35, 38886),

Gene: Cuco_55 Start: 38905, Stop: 38648, Start Num: 16
Candidate Starts for Cuco_55:
(Start: 16 @38905 has 30 MA's), (20, 38893), (35, 38746),

Gene: Discoknowium_53 Start: 38518, Stop: 38261, Start Num: 16
Candidate Starts for Discoknowium_53:
(Start: 16 @38518 has 30 MA's), (20, 38506), (27, 38431), (28, 38425), (42, 38305),

Gene: Dorin_145 Start: 88197, Stop: 88442, Start Num: 18
Candidate Starts for Dorin_145:
(Start: 18 @88197 has 4 MA's), (23, 88239), (29, 88293), (40, 88398), (41, 88404), (44, 88422),

Gene: Dorin_147 Start: 88606, Stop: 88848, Start Num: 17
Candidate Starts for Dorin_147:
(Start: 17 @88606 has 6 MA's), (38, 88783),

Gene: Dublin_55 Start: 39020, Stop: 38763, Start Num: 16
Candidate Starts for Dublin_55:
(15, 39026), (Start: 16 @39020 has 30 MA's), (26, 38936), (34, 38867), (42, 38807),

Gene: EITiger69_58 Start: 38971, Stop: 38720, Start Num: 16
Candidate Starts for EITiger69_58:
(3, 39196), (7, 39091), (Start: 16 @38971 has 30 MA's), (27, 38890),

Gene: ForGetIt_55 Start: 38876, Stop: 38619, Start Num: 16
Candidate Starts for ForGetIt_55:
(Start: 16 @38876 has 30 MA's), (20, 38864), (27, 38789), (28, 38783), (42, 38663),

Gene: Francesca_150 Start: 89303, Stop: 89536, Start Num: 17
Candidate Starts for Francesca_150:

(Start: 17 @89303 has 6 MA's),

Gene: Francesca_148 Start: 88894, Stop: 89139, Start Num: 18

Candidate Starts for Francesca_148:

(Start: 18 @88894 has 4 MA's), (23, 88936), (40, 89095), (41, 89101), (44, 89119),

Gene: Ghoulboy_58 Start: 39749, Stop: 39498, Start Num: 16

Candidate Starts for Ghoulboy_58:

(Start: 16 @39749 has 30 MA's), (34, 39602), (39, 39557),

Gene: Grayson_127 Start: 76957, Stop: 77196, Start Num: 18

Candidate Starts for Grayson_127:

(Start: 18 @76957 has 4 MA's), (23, 76999), (28, 77050), (34, 77110), (42, 77170), (44, 77182),

Gene: Grayson_128 Start: 77193, Stop: 77435, Start Num: 18

Candidate Starts for Grayson_128:

(Start: 18 @77193 has 4 MA's), (24, 77244), (32, 77343), (33, 77346), (41, 77403), (44, 77421),

Gene: Jabiru_57 Start: 38850, Stop: 38599, Start Num: 16

Candidate Starts for Jabiru_57:

(1, 39120), (Start: 16 @38850 has 30 MA's), (27, 38769),

Gene: Jovo_55 Start: 39132, Stop: 38875, Start Num: 16

Candidate Starts for Jovo_55:

(Start: 16 @39132 has 30 MA's), (20, 39120), (27, 39045), (28, 39039), (42, 38919),

Gene: Lev2_55 Start: 38764, Stop: 38507, Start Num: 16

Candidate Starts for Lev2_55:

(Start: 16 @38764 has 30 MA's), (20, 38752), (27, 38677), (28, 38671), (42, 38551),

Gene: Limpid_98 Start: 67780, Stop: 68013, Start Num: 17

Candidate Starts for Limpid_98:

(9, 67720), (13, 67762), (Start: 16 @67777 has 30 MA's), (Start: 17 @67780 has 6 MA's), (22, 67822), (44, 67999),

Gene: MarysWell_55 Start: 39263, Stop: 39006, Start Num: 16

Candidate Starts for MarysWell_55:

(15, 39269), (Start: 16 @39263 has 30 MA's), (26, 39179), (34, 39110), (42, 39050),

Gene: Micasa_54 Start: 39137, Stop: 38880, Start Num: 16

Candidate Starts for Micasa_54:

(Start: 16 @39137 has 30 MA's), (27, 39050), (28, 39044), (31, 38996), (39, 38939), (42, 38924),

Gene: Midas2_54 Start: 39045, Stop: 38788, Start Num: 16

Candidate Starts for Midas2_54:

(Start: 16 @39045 has 30 MA's), (20, 39033), (35, 38886),

Gene: Muntaha_96 Start: 67690, Stop: 67926, Start Num: 17

Candidate Starts for Muntaha_96:

(Start: 17 @67690 has 6 MA's), (21, 67714), (22, 67735), (37, 67864), (45, 67921),

Gene: Naca_56 Start: 39389, Stop: 39138, Start Num: 16

Candidate Starts for Naca_56:

(6, 39530), (Start: 8 @39485 has 1 MA's), (12, 39401), (14, 39398), (Start: 16 @39389 has 30 MA's), (34, 39242), (42, 39182), (43, 39173),

Gene: Peregrin_128 Start: 77403, Stop: 77645, Start Num: 18
Candidate Starts for Peregrin_128:
(Start: 18 @77403 has 4 MA's), (24, 77454), (41, 77613), (44, 77631),

Gene: Peregrin_127 Start: 77164, Stop: 77406, Start Num: 18
Candidate Starts for Peregrin_127:
(Start: 18 @77164 has 4 MA's), (42, 77380), (44, 77392),

Gene: PetterN_60 Start: 39004, Stop: 38753, Start Num: 16
Candidate Starts for PetterN_60:
(1, 39274), (7, 39124), (Start: 16 @39004 has 30 MA's), (27, 38923),

Gene: Phlorence_53 Start: 38509, Stop: 38252, Start Num: 16
Candidate Starts for Phlorence_53:
(Start: 16 @38509 has 30 MA's), (20, 38497), (27, 38422), (28, 38416), (42, 38296),

Gene: PickleBack_55 Start: 38756, Stop: 38499, Start Num: 16
Candidate Starts for PickleBack_55:
(10, 38786), (Start: 16 @38756 has 30 MA's), (20, 38744), (27, 38669), (28, 38663), (42, 38543),

Gene: Scorpia_60 Start: 39063, Stop: 38812, Start Num: 16
Candidate Starts for Scorpia_60:
(1, 39333), (Start: 16 @39063 has 30 MA's), (27, 38982),

Gene: Swirley_57 Start: 39125, Stop: 38868, Start Num: 16
Candidate Starts for Swirley_57:
(Start: 16 @39125 has 30 MA's), (35, 38966),

Gene: SydNat_58 Start: 39758, Stop: 39507, Start Num: 16
Candidate Starts for SydNat_58:
(Start: 16 @39758 has 30 MA's), (34, 39611), (39, 39566),

Gene: Tarynearal_53 Start: 38570, Stop: 38313, Start Num: 16
Candidate Starts for Tarynearal_53:
(Start: 16 @38570 has 30 MA's), (27, 38483), (28, 38477), (31, 38429), (42, 38357),

Gene: Theia_54 Start: 39244, Stop: 38987, Start Num: 16
Candidate Starts for Theia_54:
(15, 39250), (Start: 16 @39244 has 30 MA's), (26, 39160), (34, 39091), (42, 39031),

Gene: Tiger_54 Start: 38430, Stop: 38173, Start Num: 16
Candidate Starts for Tiger_54:
(Start: 16 @38430 has 30 MA's), (20, 38418), (27, 38343), (28, 38337), (42, 38217),

Gene: UnionJack_56 Start: 38568, Stop: 38317, Start Num: 16
Candidate Starts for UnionJack_56:
(1, 38841), (Start: 16 @38568 has 30 MA's), (27, 38487), (28, 38481), (42, 38361),

Gene: Wakanda_94 Start: 67532, Stop: 67768, Start Num: 17
Candidate Starts for Wakanda_94:

(Start: 17 @67532 has 6 MA's), (21, 67556), (22, 67577), (37, 67706), (45, 67763),

Gene: Weasels2_130 Start: 78415, Stop: 78654, Start Num: 19

Candidate Starts for Weasels2_130:

(Start: 19 @78415 has 1 MA's), (30, 78529), (41, 78622), (44, 78640),

Gene: Zolita_57 Start: 39762, Stop: 39511, Start Num: 16

Candidate Starts for Zolita_57:

(Start: 16 @39762 has 30 MA's), (34, 39615), (39, 39570),