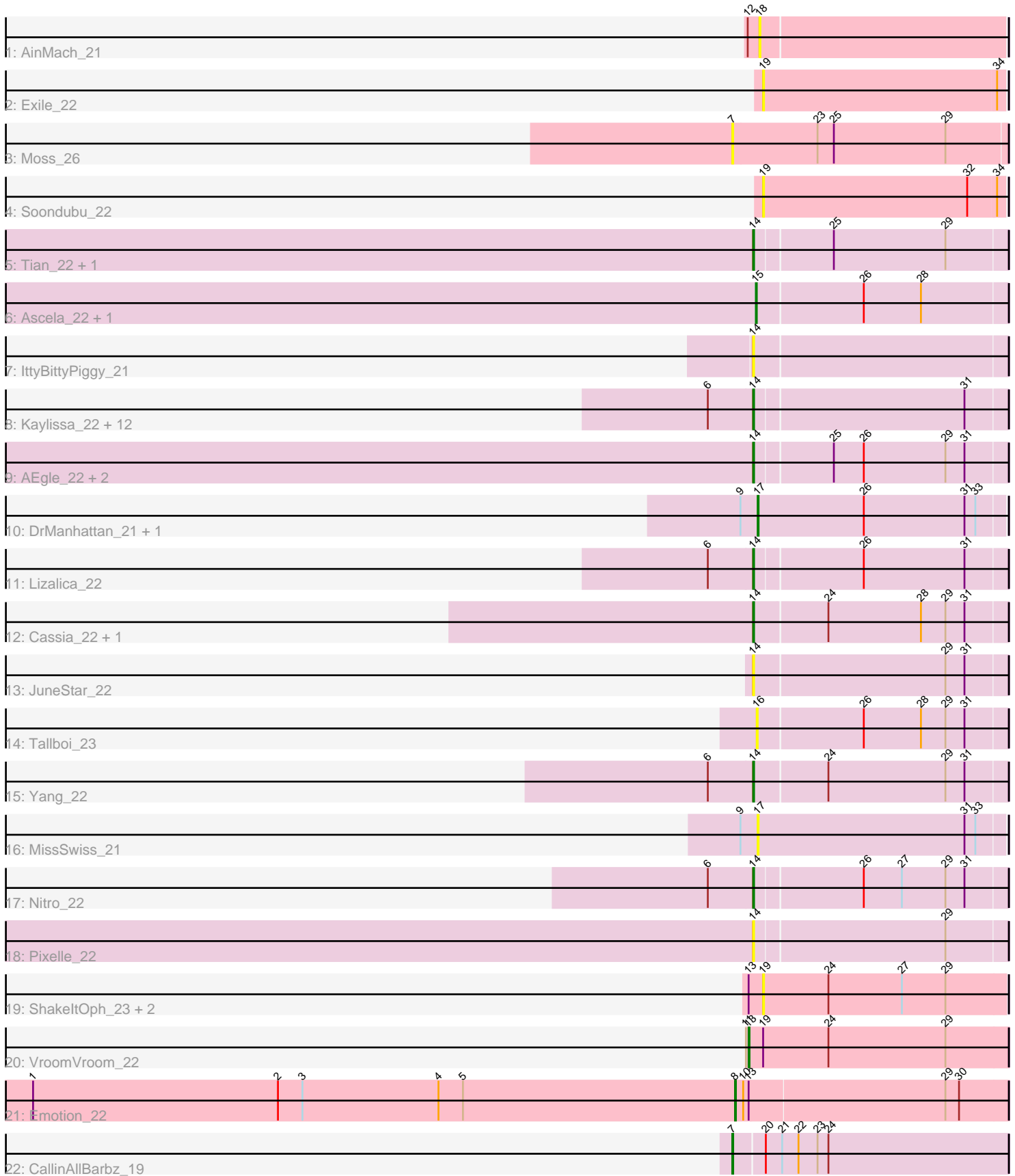


Pham 157988



Note: Tracks are now grouped by subcluster and scaled. Switching in subcluster is indicated by changes in track color. Track scale is now set by default to display the region 30 bp upstream of start 1 to 30 bp downstream of the last possible start. If this default region is judged to be packed too tightly with annotated starts, the track will be further scaled to only show that region of the ORF with annotated starts. This action will be indicated by adding "Zoomed" to the title. For starts, yellow indicates the location of called starts comprised solely of Glimmer/GeneMark auto-annotations, green indicates the location of called starts with at least 1 manual gene annotation.

Pham 157988 Report

This analysis was run 04/13/24 on database version 558.

WARNING: Pham size does not match number of genes in report. Either unphamerated genes have been added (by you) or starterator has removed genes due to invalid start codon.

Pham number 157988 has 42 members, 22 are drafts.

Phages represented in each track:

- Track 1 : AinMach_21
- Track 2 : Exile_22
- Track 3 : Moss_26
- Track 4 : Soondubu_22
- Track 5 : Tian_22, Amyev_22
- Track 6 : Ascela_22, Iter_22
- Track 7 : IttyBittyPiggy_21
- Track 8 : Kaylissa_22, Tutumahutu_23, AGrandiflora_23, Lego_22, Powerpuff_22, YesChef_22, Joemato_24, Tbone_22, Warda_22, Mudpuppy_23, Cyan_22, JohnDoe_22, Simpson_24
- Track 9 : AEgle_22, Adumb2043_22, Turab_22
- Track 10 : DrManhattan_21, Adolin_21
- Track 11 : Lizalica_22
- Track 12 : Cassia_22, Pumpkins_38
- Track 13 : JuneStar_22
- Track 14 : Tallboi_23
- Track 15 : Yang_22
- Track 16 : MissSwiss_21
- Track 17 : Nitro_22
- Track 18 : Pixelle_22
- Track 19 : ShakeItOph_23, JasmineDragon_23, MiniMommy_22
- Track 20 : VroomVroom_22
- Track 21 : Emotion_22
- Track 22 : CallinAllBarbz_19

Summary of Final Annotations (See graph section above for start numbers):

The start number called the most often in the published annotations is 14, it was called in 13 of the 20 non-draft genes in the pham.

Genes that call this "Most Annotated" start:

- AEgle_22, AGrandiflora_23, Adumb2043_22, Amyev_22, Cassia_22, Cyan_22, IttyBittyPiggy_21, Joemato_24, JohnDoe_22, JuneStar_22, Kaylissa_22, Lego_22, Lizalica_22, Mudpuppy_23, Nitro_22, Pixelle_22, Powerpuff_22, Pumpkins_38, Simpson_24, Tbone_22, Tian_22, Turab_22, Tutumahutu_23, Warda_22, Yang_22, YesChef_22,

Genes that have the "Most Annotated" start but do not call it:

-

Genes that do not have the "Most Annotated" start:

- Adolin_21, AinMach_21, Ascela_22, CallinAllBarbz_19, DrManhattan_21, Emotion_22, Exile_22, Iter_22, JasmineDragon_23, MiniMommy_22, MissSwiss_21, Moss_26, ShakeltOph_23, Soondubu_22, Tallboi_23, VroomVroom_22,

Summary by start number:

Start 7:

- Found in 2 of 42 (4.8%) of genes in pham
- Manual Annotations of this start: 1 of 20
- Called 100.0% of time when present
- Phage (with cluster) where this start called: CallinAllBarbz_19 (FP), Moss_26 (AZ),

Start 8:

- Found in 1 of 42 (2.4%) of genes in pham
- Manual Annotations of this start: 1 of 20
- Called 100.0% of time when present
- Phage (with cluster) where this start called: Emotion_22 (AZ4),

Start 13:

- Found in 5 of 42 (11.9%) of genes in pham
- Manual Annotations of this start: 1 of 20
- Called 20.0% of time when present
- Phage (with cluster) where this start called: VroomVroom_22 (AZ4),

Start 14:

- Found in 26 of 42 (61.9%) of genes in pham
- Manual Annotations of this start: 13 of 20
- Called 100.0% of time when present
- Phage (with cluster) where this start called: AEgle_22 (AZ1), AGrandiflora_23 (AZ1), Adumb2043_22 (AZ1), Amyev_22 (AZ1), Cassia_22 (AZ1), Cyan_22 (AZ1), IttyBittyPiggy_21 (AZ1), Joemato_24 (AZ1), JohnDoe_22 (AZ1), JuneStar_22 (AZ1), Kaylissa_22 (AZ1), Lego_22 (AZ1), Lizalica_22 (AZ1), Mudpuppy_23 (AZ1), Nitro_22 (AZ1), Pixelle_22 (AZ1), Powerpuff_22 (AZ1), Pumpkins_38 (AZ1), Simpson_24 (AZ1), Tbone_22 (AZ1), Tian_22 (AZ1), Turab_22 (AZ1), Tutumahutu_23 (AZ1), Warda_22 (AZ1), Yang_22 (AZ1), YesChef_22 (AZ1),

Start 15:

- Found in 2 of 42 (4.8%) of genes in pham
- Manual Annotations of this start: 2 of 20
- Called 100.0% of time when present
- Phage (with cluster) where this start called: Ascela_22 (AZ1), Iter_22 (AZ1),

Start 16:

- Found in 1 of 42 (2.4%) of genes in pham
- No Manual Annotations of this start.
- Called 100.0% of time when present
- Phage (with cluster) where this start called: Tallboi_23 (AZ1),

Start 17:

- Found in 3 of 42 (7.1%) of genes in pham
- Manual Annotations of this start: 2 of 20
- Called 100.0% of time when present
- Phage (with cluster) where this start called: Adolin_21 (AZ1), DrManhattan_21 (AZ1), MissSwiss_21 (AZ1),

Start 18:

- Found in 1 of 42 (2.4%) of genes in pham
- No Manual Annotations of this start.
- Called 100.0% of time when present
- Phage (with cluster) where this start called: AinMach_21 (AZ),

Start 19:

- Found in 6 of 42 (14.3%) of genes in pham
- No Manual Annotations of this start.
- Called 83.3% of time when present
- Phage (with cluster) where this start called: Exile_22 (AZ), JasmineDragon_23 (AZ4), MiniMommy_22 (AZ4), ShakeltOph_23 (AZ4), Soondubu_22 (AZ),

Summary by clusters:

There are 4 clusters represented in this pham: FP, AZ1, AZ, AZ4,

Info for manual annotations of cluster AZ1:

- Start number 14 was manually annotated 13 times for cluster AZ1.
- Start number 15 was manually annotated 2 times for cluster AZ1.
- Start number 17 was manually annotated 2 times for cluster AZ1.

Info for manual annotations of cluster AZ4:

- Start number 8 was manually annotated 1 time for cluster AZ4.
- Start number 13 was manually annotated 1 time for cluster AZ4.

Info for manual annotations of cluster FP:

- Start number 7 was manually annotated 1 time for cluster FP.

Gene Information:

Gene: AEgle_22 Start: 19269, Stop: 19538, Start Num: 14

Candidate Starts for AEgle_22:

(Start: 14 @19269 has 13 MA's), (25, 19350), (26, 19383), (29, 19473), (31, 19494),

Gene: AGrandiflora_23 Start: 19367, Stop: 19636, Start Num: 14

Candidate Starts for AGrandiflora_23:

(6, 19325), (Start: 14 @19367 has 13 MA's), (31, 19592),

Gene: Adolin_21 Start: 17721, Stop: 17990, Start Num: 17

Candidate Starts for Adolin_21:

(9, 17703), (Start: 17 @17721 has 2 MA's), (26, 17838), (31, 17949), (33, 17961),

Gene: Adumb2043_22 Start: 19268, Stop: 19537, Start Num: 14

Candidate Starts for Adumb2043_22:

(Start: 14 @19268 has 13 MA's), (25, 19349), (26, 19382), (29, 19472), (31, 19493),

Gene: AinMach_21 Start: 18975, Stop: 19241, Start Num: 18

Candidate Starts for AinMach_21:

(12, 18963), (18, 18975),

Gene: Amyev_22 Start: 19659, Stop: 19928, Start Num: 14

Candidate Starts for Amyev_22:

(Start: 14 @19659 has 13 MA's), (25, 19740), (29, 19863),

Gene: Ascela_22 Start: 19279, Stop: 19548, Start Num: 15

Candidate Starts for Ascela_22:

(Start: 15 @19279 has 2 MA's), (26, 19393), (28, 19456),

Gene: CallinAllBarbz_19 Start: 17627, Stop: 17926, Start Num: 7

Candidate Starts for CallinAllBarbz_19:

(Start: 7 @17627 has 1 MA's), (20, 17660), (21, 17678), (22, 17696), (23, 17717), (24, 17729),

Gene: Cassia_22 Start: 19707, Stop: 19979, Start Num: 14

Candidate Starts for Cassia_22:

(Start: 14 @19707 has 13 MA's), (24, 19785), (28, 19887), (29, 19914), (31, 19935),

Gene: Cyan_22 Start: 19415, Stop: 19684, Start Num: 14

Candidate Starts for Cyan_22:

(6, 19373), (Start: 14 @19415 has 13 MA's), (31, 19640),

Gene: DrManhattan_21 Start: 17711, Stop: 17980, Start Num: 17

Candidate Starts for DrManhattan_21:

(9, 17693), (Start: 17 @17711 has 2 MA's), (26, 17828), (31, 17939), (33, 17951),

Gene: Emotion_22 Start: 19071, Stop: 19367, Start Num: 8

Candidate Starts for Emotion_22:

(1, 18297), (2, 18567), (3, 18594), (4, 18744), (5, 18771), (Start: 8 @19071 has 1 MA's), (10, 19080),
(Start: 13 @19086 has 1 MA's), (29, 19299), (30, 19314),

Gene: Exile_22 Start: 21578, Stop: 21841, Start Num: 19

Candidate Starts for Exile_22:

(19, 21578), (34, 21833),

Gene: Iter_22 Start: 19279, Stop: 19548, Start Num: 15

Candidate Starts for Iter_22:

(Start: 15 @19279 has 2 MA's), (26, 19393), (28, 19456),

Gene: IttyBittyPiggy_21 Start: 17803, Stop: 18075, Start Num: 14

Candidate Starts for IttyBittyPiggy_21:

(Start: 14 @17803 has 13 MA's),

Gene: JasmineDragon_23 Start: 18506, Stop: 18772, Start Num: 19

Candidate Starts for JasmineDragon_23:

(Start: 13 @18491 has 1 MA's), (19, 18506), (24, 18578), (27, 18659), (29, 18707),

Gene: Joemato_24 Start: 19415, Stop: 19684, Start Num: 14

Candidate Starts for Joemato_24:

(6, 19373), (Start: 14 @19415 has 13 MA's), (31, 19640),

Gene: JohnDoe_22 Start: 19410, Stop: 19679, Start Num: 14

Candidate Starts for JohnDoe_22:

(6, 19368), (Start: 14 @19410 has 13 MA's), (31, 19635),

Gene: JuneStar_22 Start: 20113, Stop: 20385, Start Num: 14

Candidate Starts for JuneStar_22:

(Start: 14 @20113 has 13 MA's), (29, 20320), (31, 20341),

Gene: Kaylissa_22 Start: 19416, Stop: 19685, Start Num: 14

Candidate Starts for Kaylissa_22:

(6, 19374), (Start: 14 @19416 has 13 MA's), (31, 19641),

Gene: Lego_22 Start: 19370, Stop: 19639, Start Num: 14

Candidate Starts for Lego_22:

(6, 19328), (Start: 14 @19370 has 13 MA's), (31, 19595),

Gene: Lizalica_22 Start: 19400, Stop: 19669, Start Num: 14

Candidate Starts for Lizalica_22:

(6, 19358), (Start: 14 @19400 has 13 MA's), (26, 19514), (31, 19625),

Gene: MiniMommy_22 Start: 18507, Stop: 18773, Start Num: 19

Candidate Starts for MiniMommy_22:

(Start: 13 @18492 has 1 MA's), (19, 18507), (24, 18579), (27, 18660), (29, 18708),

Gene: MissSwiss_21 Start: 17769, Stop: 18038, Start Num: 17

Candidate Starts for MissSwiss_21:

(9, 17751), (Start: 17 @17769 has 2 MA's), (31, 17997), (33, 18009),

Gene: Moss_26 Start: 17953, Stop: 18252, Start Num: 7

Candidate Starts for Moss_26:

(Start: 7 @17953 has 1 MA's), (23, 18046), (25, 18064), (29, 18187),

Gene: Mudpuppy_23 Start: 19413, Stop: 19682, Start Num: 14

Candidate Starts for Mudpuppy_23:

(6, 19371), (Start: 14 @19413 has 13 MA's), (31, 19638),

Gene: Nitro_22 Start: 19269, Stop: 19538, Start Num: 14

Candidate Starts for Nitro_22:

(6, 19227), (Start: 14 @19269 has 13 MA's), (26, 19383), (27, 19425), (29, 19473), (31, 19494),

Gene: Pixelle_22 Start: 19662, Stop: 19931, Start Num: 14

Candidate Starts for Pixelle_22:

(Start: 14 @19662 has 13 MA's), (29, 19866),

Gene: Powerpuff_22 Start: 19421, Stop: 19690, Start Num: 14

Candidate Starts for Powerpuff_22:

(6, 19379), (Start: 14 @19421 has 13 MA's), (31, 19646),

Gene: Pumpkins_38 Start: 20140, Stop: 20412, Start Num: 14

Candidate Starts for Pumpkins_38:

(Start: 14 @20140 has 13 MA's), (24, 20218), (28, 20320), (29, 20347), (31, 20368),

Gene: ShakeltOph_23 Start: 18506, Stop: 18772, Start Num: 19

Candidate Starts for ShakeltOph_23:

(Start: 13 @18491 has 1 MA's), (19, 18506), (24, 18578), (27, 18659), (29, 18707),

Gene: Simpson_24 Start: 19415, Stop: 19684, Start Num: 14

Candidate Starts for Simpson_24:

(6, 19373), (Start: 14 @19415 has 13 MA's), (31, 19640),

Gene: Soondubu_22 Start: 21582, Stop: 21845, Start Num: 19

Candidate Starts for Soondubu_22:

(19, 21582), (32, 21807), (34, 21837),

Gene: Tallboi_23 Start: 19248, Stop: 19517, Start Num: 16

Candidate Starts for Tallboi_23:

(16, 19248), (26, 19362), (28, 19425), (29, 19452), (31, 19473),

Gene: Tbone_22 Start: 19420, Stop: 19689, Start Num: 14

Candidate Starts for Tbone_22:

(6, 19378), (Start: 14 @19420 has 13 MA's), (31, 19645),

Gene: Tian_22 Start: 19659, Stop: 19928, Start Num: 14

Candidate Starts for Tian_22:

(Start: 14 @19659 has 13 MA's), (25, 19740), (29, 19863),

Gene: Turab_22 Start: 19268, Stop: 19537, Start Num: 14

Candidate Starts for Turab_22:

(Start: 14 @19268 has 13 MA's), (25, 19349), (26, 19382), (29, 19472), (31, 19493),

Gene: Tutumahutu_23 Start: 19421, Stop: 19690, Start Num: 14

Candidate Starts for Tutumahutu_23:

(6, 19379), (Start: 14 @19421 has 13 MA's), (31, 19646),

Gene: VroomVroom_22 Start: 18499, Stop: 18783, Start Num: 13

Candidate Starts for VroomVroom_22:

(11, 18496), (Start: 13 @18499 has 1 MA's), (19, 18514), (24, 18586), (29, 18715),

Gene: Warda_22 Start: 19412, Stop: 19681, Start Num: 14

Candidate Starts for Warda_22:

(6, 19370), (Start: 14 @19412 has 13 MA's), (31, 19637),

Gene: Yang_22 Start: 19406, Stop: 19678, Start Num: 14

Candidate Starts for Yang_22:

(6, 19364), (Start: 14 @19406 has 13 MA's), (24, 19484), (29, 19613), (31, 19634),

Gene: YesChef_22 Start: 19421, Stop: 19690, Start Num: 14
Candidate Starts for YesChef_22:
(6, 19379), (Start: 14 @19421 has 13 MA's), (31, 19646),