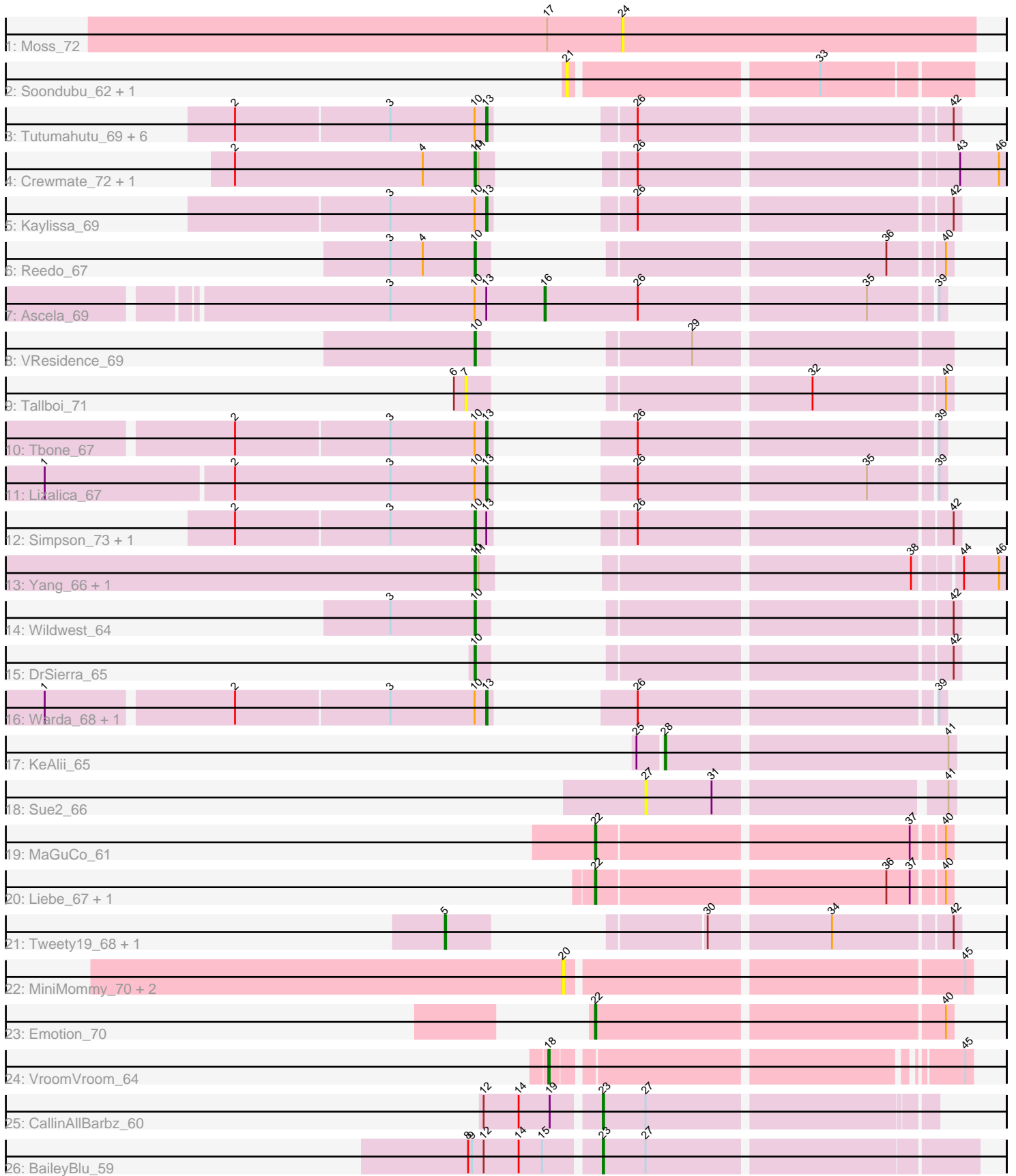


Pham 158002



Note: Tracks are now grouped by subcluster and scaled. Switching in subcluster is indicated by changes in track color. Track scale is now set by default to display the region 30 bp upstream of start 1 to 30 bp downstream of the last possible start. If this default region is judged to be packed too tightly with annotated starts, the track will be further scaled to only show that region of the ORF with annotated starts. This action will be indicated by adding "Zoomed" to the title. For starts, yellow indicates the location of called starts comprised solely of Glimmer/GeneMark auto-annotations, green indicates the location of called starts with at least 1 manual gene annotation.

Pham 158002 Report

This analysis was run 04/13/24 on database version 558.

Pham number 158002 has 41 members, 15 are drafts.

Phages represented in each track:

- Track 1 : Moss_72
- Track 2 : Soondubu_62, Exile_59
- Track 3 : Tutumahutu_69, Powerpuff_69, YesChef_67, Lego_67, AGrandiflora_69, Cyan_67, Joemato_73
- Track 4 : Crewmate_72, ObiToo_72
- Track 5 : Kaylissa_69
- Track 6 : Reedo_67
- Track 7 : Ascela_69
- Track 8 : VResidence_69
- Track 9 : Tallboi_71
- Track 10 : Tbone_67
- Track 11 : Lizalica_67
- Track 12 : Simpson_73, JohnDoe_68
- Track 13 : Yang_66, JuneStar_67
- Track 14 : Wildwest_64
- Track 15 : DrSierra_65
- Track 16 : Warda_68, Mudpuppy_68
- Track 17 : KeAlii_65
- Track 18 : Sue2_66
- Track 19 : MaGuCo_61
- Track 20 : Liebe_67, Maureen_67
- Track 21 : Tweety19_68, Snek_67
- Track 22 : MiniMommy_70, JasmineDragon_69, ShakeltOph_69
- Track 23 : Emotion_70
- Track 24 : VroomVroom_64
- Track 25 : CallinAllBarbz_60
- Track 26 : BaileyBlu_59

Summary of Final Annotations (See graph section above for start numbers):

The start number called the most often in the published annotations is 10, it was called in 8 of the 26 non-draft genes in the pham.

Genes that call this "Most Annotated" start:

- Crewmate_72, DrSierra_65, JohnDoe_68, JuneStar_67, ObiToo_72, Reedo_67, Simpson_73, VResidence_69, Wildwest_64, Yang_66,

Genes that have the "Most Annotated" start but do not call it:

- AGrandiflora_69, Ascela_69, Cyan_67, Joemato_73, Kaylissa_69, Lego_67, Lizalica_67, Mudpuppy_68, Powerpuff_69, Tbone_67, Tutumahutu_69, Warda_68, YesChef_67,

Genes that do not have the "Most Annotated" start:

- BaileyBlu_59, CallinAllBarbz_60, Emotion_70, Exile_59, JasmineDragon_69, KeAlii_65, Liebe_67, MaGuCo_61, Maureen_67, MiniMommy_70, Moss_72, ShakeltOph_69, Snek_67, Soondubu_62, Sue2_66, Tallboi_71, Tweety19_68, VroomVroom_64,

Summary by start number:

Start 5:

- Found in 2 of 41 (4.9%) of genes in pham
- Manual Annotations of this start: 2 of 26
- Called 100.0% of time when present
- Phage (with cluster) where this start called: Snek_67 (AZ3), Tweety19_68 (AZ3),

Start 7:

- Found in 1 of 41 (2.4%) of genes in pham
- No Manual Annotations of this start.
- Called 100.0% of time when present
- Phage (with cluster) where this start called: Tallboi_71 (AZ1),

Start 10:

- Found in 23 of 41 (56.1%) of genes in pham
- Manual Annotations of this start: 8 of 26
- Called 43.5% of time when present
- Phage (with cluster) where this start called: Crewmate_72 (AZ1), DrSierra_65 (AZ1), JohnDoe_68 (AZ1), JuneStar_67 (AZ1), ObiToo_72 (AZ1), Reedo_67 (AZ1), Simpson_73 (AZ1), VResidence_69 (AZ1), Wildwest_64 (AZ1), Yang_66 (AZ1),

Start 13:

- Found in 15 of 41 (36.6%) of genes in pham
- Manual Annotations of this start: 7 of 26
- Called 80.0% of time when present
- Phage (with cluster) where this start called: AGrandiflora_69 (AZ1), Cyan_67 (AZ1), Joemato_73 (AZ1), Kaylissa_69 (AZ1), Lego_67 (AZ1), Lizalica_67 (AZ1), Mudpuppy_68 (AZ1), Powerpuff_69 (AZ1), Tbone_67 (AZ1), Tutumahutu_69 (AZ1), Warda_68 (AZ1), YesChef_67 (AZ1),

Start 16:

- Found in 1 of 41 (2.4%) of genes in pham
- Manual Annotations of this start: 1 of 26
- Called 100.0% of time when present
- Phage (with cluster) where this start called: Ascela_69 (AZ1),

Start 18:

- Found in 1 of 41 (2.4%) of genes in pham

- Manual Annotations of this start: 1 of 26
- Called 100.0% of time when present
- Phage (with cluster) where this start called: VroomVroom_64 (AZ4),

Start 20:

- Found in 3 of 41 (7.3%) of genes in pham
- No Manual Annotations of this start.
- Called 100.0% of time when present
- Phage (with cluster) where this start called: JasmineDragon_69 (AZ4), MiniMommy_70 (AZ4), ShakeltOph_69 (AZ4),

Start 21:

- Found in 2 of 41 (4.9%) of genes in pham
- No Manual Annotations of this start.
- Called 100.0% of time when present
- Phage (with cluster) where this start called: Exile_59 (AZ), Soondubu_62 (AZ),

Start 22:

- Found in 4 of 41 (9.8%) of genes in pham
- Manual Annotations of this start: 4 of 26
- Called 100.0% of time when present
- Phage (with cluster) where this start called: Emotion_70 (AZ4), Liebe_67 (AZ2), MaGuCo_61 (AZ2), Maureen_67 (AZ2),

Start 23:

- Found in 2 of 41 (4.9%) of genes in pham
- Manual Annotations of this start: 2 of 26
- Called 100.0% of time when present
- Phage (with cluster) where this start called: BaileyBlu_59 (FP), CallinAllBarbz_60 (FP),

Start 24:

- Found in 1 of 41 (2.4%) of genes in pham
- No Manual Annotations of this start.
- Called 100.0% of time when present
- Phage (with cluster) where this start called: Moss_72 (AZ),

Start 27:

- Found in 3 of 41 (7.3%) of genes in pham
- No Manual Annotations of this start.
- Called 33.3% of time when present
- Phage (with cluster) where this start called: Sue2_66 (AZ1),

Start 28:

- Found in 1 of 41 (2.4%) of genes in pham
- Manual Annotations of this start: 1 of 26
- Called 100.0% of time when present
- Phage (with cluster) where this start called: KeAlii_65 (AZ1),

Summary by clusters:

There are 6 clusters represented in this pham: FP, AZ, AZ1, AZ2, AZ3, AZ4,

Info for manual annotations of cluster AZ1:

- Start number 10 was manually annotated 8 times for cluster AZ1.
- Start number 13 was manually annotated 7 times for cluster AZ1.
- Start number 16 was manually annotated 1 time for cluster AZ1.
- Start number 28 was manually annotated 1 time for cluster AZ1.

Info for manual annotations of cluster AZ2:

- Start number 22 was manually annotated 3 times for cluster AZ2.

Info for manual annotations of cluster AZ3:

- Start number 5 was manually annotated 2 times for cluster AZ3.

Info for manual annotations of cluster AZ4:

- Start number 18 was manually annotated 1 time for cluster AZ4.
- Start number 22 was manually annotated 1 time for cluster AZ4.

Info for manual annotations of cluster FP:

- Start number 23 was manually annotated 2 times for cluster FP.

Gene Information:

Gene: AGrandiflora_69 Start: 42827, Stop: 43090, Start Num: 13

Candidate Starts for AGrandiflora_69:

(2, 42638), (3, 42755), (Start: 10 @42818 has 8 MA's), (Start: 13 @42827 has 7 MA's), (26, 42857), (42, 43085),

Gene: Ascela_69 Start: 43040, Stop: 43333, Start Num: 16

Candidate Starts for Ascela_69:

(3, 42923), (Start: 10 @42986 has 8 MA's), (Start: 13 @42995 has 7 MA's), (Start: 16 @43040 has 1 MA's), (26, 43112), (35, 43280), (39, 43328),

Gene: BaileyBlu_59 Start: 39085, Stop: 39360, Start Num: 23

Candidate Starts for BaileyBlu_59:

(8, 38989), (9, 38992), (12, 39001), (14, 39028), (15, 39046), (Start: 23 @39085 has 2 MA's), (27, 39118),

Gene: CallinAllBarbz_60 Start: 39859, Stop: 40101, Start Num: 23

Candidate Starts for CallinAllBarbz_60:

(12, 39775), (14, 39802), (19, 39826), (Start: 23 @39859 has 2 MA's), (27, 39892),

Gene: Crewmate_72 Start: 43229, Stop: 43537, Start Num: 10

Candidate Starts for Crewmate_72:

(2, 43046), (4, 43190), (Start: 10 @43229 has 8 MA's), (11, 43232), (26, 43268), (43, 43502), (46, 43532),

Gene: Cyan_67 Start: 42571, Stop: 42834, Start Num: 13

Candidate Starts for Cyan_67:

(2, 42382), (3, 42499), (Start: 10 @42562 has 8 MA's), (Start: 13 @42571 has 7 MA's), (26, 42601), (42, 42829),

Gene: DrSierra_65 Start: 41681, Stop: 41947, Start Num: 10
Candidate Starts for DrSierra_65:
(Start: 10 @41681 has 8 MA's), (42, 41942),

Gene: Emotion_70 Start: 43720, Stop: 43983, Start Num: 22
Candidate Starts for Emotion_70:
(Start: 22 @43720 has 4 MA's), (40, 43978),

Gene: Exile_59 Start: 43115, Stop: 43405, Start Num: 21
Candidate Starts for Exile_59:
(21, 43115), (33, 43295),

Gene: JasmineDragon_69 Start: 42320, Stop: 42616, Start Num: 20
Candidate Starts for JasmineDragon_69:
(20, 42320), (45, 42611),

Gene: Joemato_73 Start: 42748, Stop: 43011, Start Num: 13
Candidate Starts for Joemato_73:
(2, 42559), (3, 42676), (Start: 10 @42739 has 8 MA's), (Start: 13 @42748 has 7 MA's), (26, 42778),
(42, 43006),

Gene: JohnDoe_68 Start: 42656, Stop: 42928, Start Num: 10
Candidate Starts for JohnDoe_68:
(2, 42476), (3, 42593), (Start: 10 @42656 has 8 MA's), (Start: 13 @42665 has 7 MA's), (26, 42695),
(42, 42923),

Gene: JuneStar_67 Start: 43395, Stop: 43697, Start Num: 10
Candidate Starts for JuneStar_67:
(Start: 10 @43395 has 8 MA's), (11, 43398), (38, 43635), (44, 43665), (46, 43692),

Gene: Kaylissa_69 Start: 43024, Stop: 43287, Start Num: 13
Candidate Starts for Kaylissa_69:
(3, 42952), (Start: 10 @43015 has 8 MA's), (Start: 13 @43024 has 7 MA's), (26, 43054), (42, 43282),

Gene: KeAlii_65 Start: 40879, Stop: 41094, Start Num: 28
Candidate Starts for KeAlii_65:
(25, 40861), (Start: 28 @40879 has 1 MA's), (41, 41089),

Gene: Lego_67 Start: 42346, Stop: 42609, Start Num: 13
Candidate Starts for Lego_67:
(2, 42157), (3, 42274), (Start: 10 @42337 has 8 MA's), (Start: 13 @42346 has 7 MA's), (26, 42376),
(42, 42604),

Gene: Liebe_67 Start: 44554, Stop: 44811, Start Num: 22
Candidate Starts for Liebe_67:
(Start: 22 @44554 has 4 MA's), (36, 44767), (37, 44785), (40, 44806),

Gene: Lizalica_67 Start: 41945, Stop: 42199, Start Num: 13
Candidate Starts for Lizalica_67:
(1, 41612), (2, 41753), (3, 41873), (Start: 10 @41936 has 8 MA's), (Start: 13 @41945 has 7 MA's),
(26, 41978), (35, 42146), (39, 42194),

Gene: MaGuCo_61 Start: 42675, Stop: 42932, Start Num: 22

Candidate Starts for MaGuCo_61:

(Start: 22 @42675 has 4 MA's), (37, 42906), (40, 42927),

Gene: Maureen_67 Start: 44553, Stop: 44810, Start Num: 22

Candidate Starts for Maureen_67:

(Start: 22 @44553 has 4 MA's), (36, 44766), (37, 44784), (40, 44805),

Gene: MiniMommy_70 Start: 42328, Stop: 42624, Start Num: 20

Candidate Starts for MiniMommy_70:

(20, 42328), (45, 42619),

Gene: Moss_72 Start: 38754, Stop: 39026, Start Num: 24

Candidate Starts for Moss_72:

(17, 38697), (24, 38754),

Gene: Mudpuppy_68 Start: 42711, Stop: 42965, Start Num: 13

Candidate Starts for Mudpuppy_68:

(1, 42384), (2, 42522), (3, 42639), (Start: 10 @42702 has 8 MA's), (Start: 13 @42711 has 7 MA's), (26, 42744), (39, 42960),

Gene: ObiToo_72 Start: 42845, Stop: 43153, Start Num: 10

Candidate Starts for ObiToo_72:

(2, 42662), (4, 42806), (Start: 10 @42845 has 8 MA's), (11, 42848), (26, 42884), (43, 43118), (46, 43148),

Gene: Powerpuff_69 Start: 43550, Stop: 43813, Start Num: 13

Candidate Starts for Powerpuff_69:

(2, 43361), (3, 43478), (Start: 10 @43541 has 8 MA's), (Start: 13 @43550 has 7 MA's), (26, 43580), (42, 43808),

Gene: Reedo_67 Start: 40786, Stop: 41046, Start Num: 10

Candidate Starts for Reedo_67:

(3, 40723), (4, 40747), (Start: 10 @40786 has 8 MA's), (36, 41002), (40, 41041),

Gene: ShakeltOph_69 Start: 42320, Stop: 42616, Start Num: 20

Candidate Starts for ShakeltOph_69:

(20, 42320), (45, 42611),

Gene: Simpson_73 Start: 42743, Stop: 43015, Start Num: 10

Candidate Starts for Simpson_73:

(2, 42563), (3, 42680), (Start: 10 @42743 has 8 MA's), (Start: 13 @42752 has 7 MA's), (26, 42782), (42, 43010),

Gene: Snek_67 Start: 39932, Stop: 40216, Start Num: 5

Candidate Starts for Snek_67:

(Start: 5 @39932 has 2 MA's), (30, 40037), (34, 40124), (42, 40211),

Gene: Soondubu_62 Start: 44124, Stop: 44414, Start Num: 21

Candidate Starts for Soondubu_62:

(21, 44124), (33, 44304),

Gene: Sue2_66 Start: 41273, Stop: 41494, Start Num: 27

Candidate Starts for Sue2_66:

(27, 41273), (31, 41324), (41, 41489),

Gene: Tallboi_71 Start: 42522, Stop: 42788, Start Num: 7

Candidate Starts for Tallboi_71:

(6, 42513), (7, 42522), (32, 42687), (40, 42783),

Gene: Tbone_67 Start: 42998, Stop: 43252, Start Num: 13

Candidate Starts for Tbone_67:

(2, 42809), (3, 42926), (Start: 10 @42989 has 8 MA's), (Start: 13 @42998 has 7 MA's), (26, 43031), (39, 43247),

Gene: Tutumahutu_69 Start: 42593, Stop: 42856, Start Num: 13

Candidate Starts for Tutumahutu_69:

(2, 42404), (3, 42521), (Start: 10 @42584 has 8 MA's), (Start: 13 @42593 has 7 MA's), (26, 42623), (42, 42851),

Gene: Tweety19_68 Start: 39933, Stop: 40217, Start Num: 5

Candidate Starts for Tweety19_68:

(Start: 5 @39933 has 2 MA's), (30, 40038), (34, 40125), (42, 40212),

Gene: VResidence_69 Start: 40961, Stop: 41224, Start Num: 10

Candidate Starts for VResidence_69:

(Start: 10 @40961 has 8 MA's), (29, 41036),

Gene: VroomVroom_64 Start: 41876, Stop: 42163, Start Num: 18

Candidate Starts for VroomVroom_64:

(Start: 18 @41876 has 1 MA's), (45, 42158),

Gene: Warda_68 Start: 42724, Stop: 42978, Start Num: 13

Candidate Starts for Warda_68:

(1, 42397), (2, 42535), (3, 42652), (Start: 10 @42715 has 8 MA's), (Start: 13 @42724 has 7 MA's), (26, 42757), (39, 42973),

Gene: Wildwest_64 Start: 42676, Stop: 42942, Start Num: 10

Candidate Starts for Wildwest_64:

(3, 42613), (Start: 10 @42676 has 8 MA's), (42, 42937),

Gene: Yang_66 Start: 42085, Stop: 42387, Start Num: 10

Candidate Starts for Yang_66:

(Start: 10 @42085 has 8 MA's), (11, 42088), (38, 42325), (44, 42355), (46, 42382),

Gene: YesChef_67 Start: 42409, Stop: 42672, Start Num: 13

Candidate Starts for YesChef_67:

(2, 42220), (3, 42337), (Start: 10 @42400 has 8 MA's), (Start: 13 @42409 has 7 MA's), (26, 42439), (42, 42667),