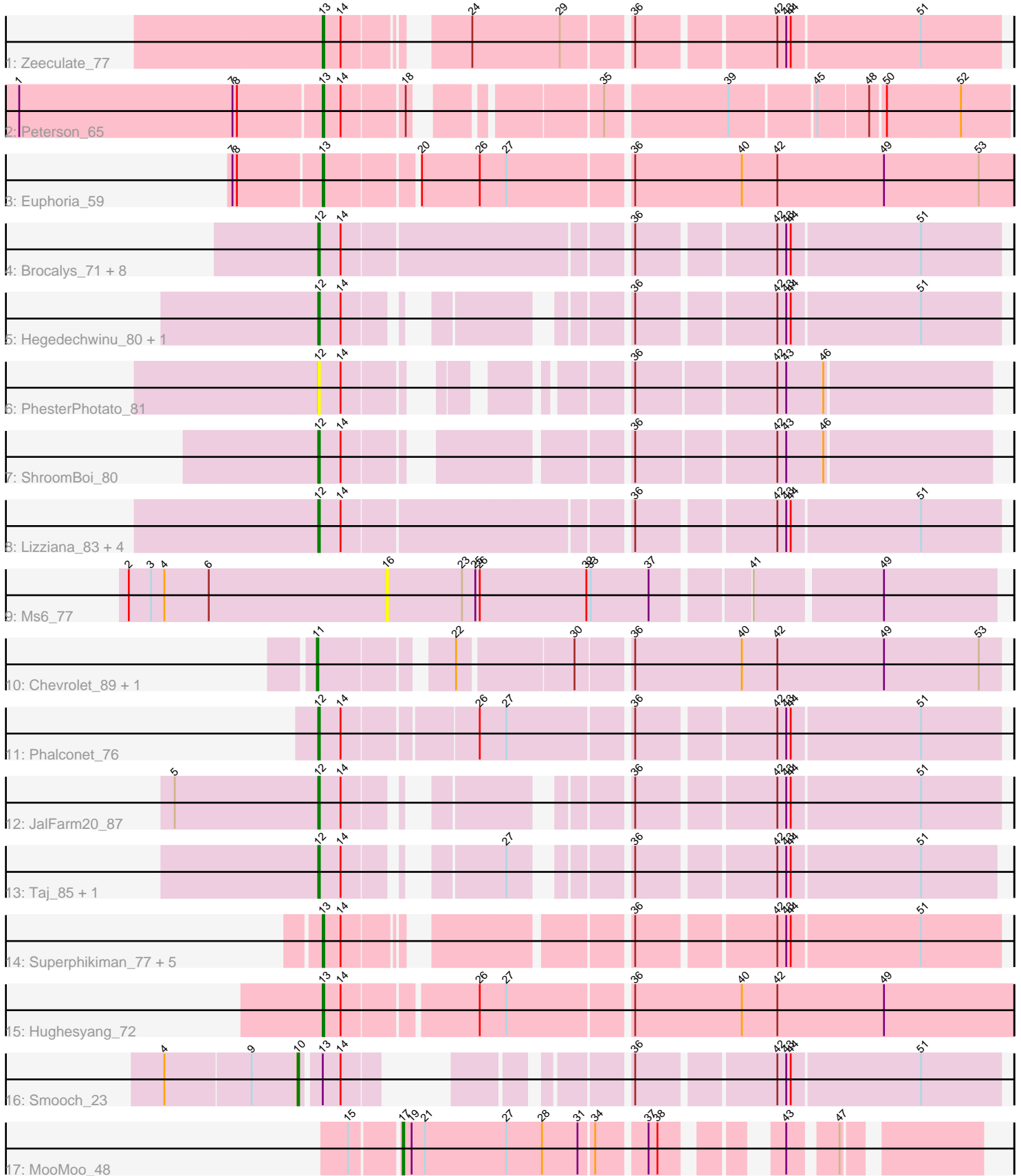


Pham 158023



Note: Tracks are now grouped by subcluster and scaled. Switching in subcluster is indicated by changes in track color. Track scale is now set by default to display the region 30 bp upstream of start 1 to 30 bp downstream of the last possible start. If this default region is judged to be packed too tightly with annotated starts, the track will be further scaled to only show that region of the ORF with annotated starts. This action will be indicated by adding "Zoomed" to the title. For starts, yellow indicates the location of called starts comprised solely of Glimmer/GeneMark auto-annotations, green indicates the location of called starts with at least 1 manual gene annotation.

Pham 158023 Report

This analysis was run 04/13/24 on database version 558.

Pham number 158023 has 37 members, 4 are drafts.

Phages represented in each track:

- Track 1 : Zeeculate_77
- Track 2 : Peterson_65
- Track 3 : Euphoria_59
- Track 4 : Brocalys_71, Koella_70, Priscilla_76, Cabrinians_78, LastJedi_70, FreddyB_88, NormanBulbieJr_75, SwagPiggett_82, BobaPhett_81
- Track 5 : Hegedechwinu_80, Crumble_75
- Track 6 : PhesterPhotato_81
- Track 7 : ShroomBoi_80
- Track 8 : Lizziana_83, Flathead_78, Donkeykong_83, Saal_78, Gorge_80
- Track 9 : Ms6_77
- Track 10 : Chevrolet_89, ArcusAngelus_83
- Track 11 : Phalconet_76
- Track 12 : JalFarm20_87
- Track 13 : Taj_85, Wee_84
- Track 14 : Superphikiman_77, MiaZeal_80, Squint_80, Lucky2013_77, Ariel_79, Porcelain_79
- Track 15 : Hughesyang_72
- Track 16 : Smooch_23
- Track 17 : MooMoo_48

Summary of Final Annotations (See graph section above for start numbers):

The start number called the most often in the published annotations is 12, it was called in 20 of the 33 non-draft genes in the pham.

Genes that call this "Most Annotated" start:

- BobaPhett_81, Brocalys_71, Cabrinians_78, Crumble_75, Donkeykong_83, Flathead_78, FreddyB_88, Gorge_80, Hegedechwinu_80, JalFarm20_87, Koella_70, LastJedi_70, Lizziana_83, NormanBulbieJr_75, Phalconet_76, PhesterPhotato_81, Priscilla_76, Saal_78, ShroomBoi_80, SwagPiggett_82, Taj_85, Wee_84,

Genes that have the "Most Annotated" start but do not call it:

-

Genes that do not have the "Most Annotated" start:

- ArcusAngelus_83, Ariel_79, Chevrolet_89, Euphoria_59, Hughesyang_72, Lucky2013_77, MiaZeal_80, MooMoo_48, Ms6_77, Peterson_65, Porcelain_79, Smooch_23, Squint_80, Superphikiman_77, Zeeculate_77,

Summary by start number:

Start 10:

- Found in 1 of 37 (2.7%) of genes in pham
- Manual Annotations of this start: 1 of 33
- Called 100.0% of time when present
- Phage (with cluster) where this start called: Smooch_23 (O),

Start 11:

- Found in 2 of 37 (5.4%) of genes in pham
- Manual Annotations of this start: 1 of 33
- Called 100.0% of time when present
- Phage (with cluster) where this start called: ArcusAngelus_83 (F1), Chevrolet_89 (F1),

Start 12:

- Found in 22 of 37 (59.5%) of genes in pham
- Manual Annotations of this start: 20 of 33
- Called 100.0% of time when present
- Phage (with cluster) where this start called: BobaPhett_81 (F1), Brocalys_71 (F1), Cabrinians_78 (F1), Crumble_75 (F1), Donkeykong_83 (F1), Flathead_78 (F1), FreddyB_88 (F1), Gorge_80 (F1), Hegedechwinu_80 (F1), JalFarm20_87 (F1), Koella_70 (F1), LastJedi_70 (F1), Lizziana_83 (F1), NormanBulbieJr_75 (F1), Phalconet_76 (F1), PhesterPhotato_81 (F1), Priscilla_76 (F1), Saal_78 (F1), ShroomBoi_80 (F1), SwagPiggett_82 (F1), Taj_85 (F1), Wee_84 (F1),

Start 13:

- Found in 11 of 37 (29.7%) of genes in pham
- Manual Annotations of this start: 10 of 33
- Called 90.9% of time when present
- Phage (with cluster) where this start called: Ariel_79 (J), Euphoria_59 (A1), Hughesyang_72 (J), Lucky2013_77 (J), MiaZeal_80 (J), Peterson_65 (A1), Porcelain_79 (J), Squint_80 (J), Superphikiman_77 (J), Zeeculate_77 (A1),

Start 16:

- Found in 1 of 37 (2.7%) of genes in pham
- No Manual Annotations of this start.
- Called 100.0% of time when present
- Phage (with cluster) where this start called: Ms6_77 (F1),

Start 17:

- Found in 1 of 37 (2.7%) of genes in pham
- Manual Annotations of this start: 1 of 33
- Called 100.0% of time when present
- Phage (with cluster) where this start called: MooMoo_48 (singleton),

Summary by clusters:

There are 5 clusters represented in this pham: A1, F1, singleton, J, O,

Info for manual annotations of cluster A1:

- Start number 13 was manually annotated 3 times for cluster A1.

Info for manual annotations of cluster F1:

- Start number 11 was manually annotated 1 time for cluster F1.
- Start number 12 was manually annotated 20 times for cluster F1.

Info for manual annotations of cluster J:

- Start number 13 was manually annotated 7 times for cluster J.

Info for manual annotations of cluster O:

- Start number 10 was manually annotated 1 time for cluster O.

Gene Information:

Gene: ArcusAngelus_83 Start: 49676, Stop: 50101, Start Num: 11

Candidate Starts for ArcusAngelus_83:

(Start: 11 @49676 has 1 MA's), (22, 49751), (30, 49823), (36, 49856), (40, 49928), (42, 49952), (49, 50024), (53, 50087),

Gene: Ariel_79 Start: 48566, Stop: 48168, Start Num: 13

Candidate Starts for Ariel_79:

(Start: 13 @48566 has 10 MA's), (14, 48554), (36, 48398), (42, 48314), (43, 48308), (44, 48305), (51, 48221),

Gene: BobaPhett_81 Start: 50730, Stop: 51155, Start Num: 12

Candidate Starts for BobaPhett_81:

(Start: 12 @50730 has 20 MA's), (14, 50745), (36, 50925), (42, 51009), (43, 51015), (44, 51018), (51, 51102),

Gene: Brocalys_71 Start: 46210, Stop: 46635, Start Num: 12

Candidate Starts for Brocalys_71:

(Start: 12 @46210 has 20 MA's), (14, 46225), (36, 46405), (42, 46489), (43, 46495), (44, 46498), (51, 46582),

Gene: Cabrinians_78 Start: 48130, Stop: 48555, Start Num: 12

Candidate Starts for Cabrinians_78:

(Start: 12 @48130 has 20 MA's), (14, 48145), (36, 48325), (42, 48409), (43, 48415), (44, 48418), (51, 48502),

Gene: Chevrolet_89 Start: 49677, Stop: 50102, Start Num: 11

Candidate Starts for Chevrolet_89:

(Start: 11 @49677 has 1 MA's), (22, 49752), (30, 49824), (36, 49857), (40, 49929), (42, 49953), (49, 50025), (53, 50088),

Gene: Crumble_75 Start: 44855, Stop: 45280, Start Num: 12

Candidate Starts for Crumble_75:

(Start: 12 @44855 has 20 MA's), (14, 44870), (36, 45050), (42, 45134), (43, 45140), (44, 45143), (51, 45227),

Gene: Donkeykong_83 Start: 49734, Stop: 50111, Start Num: 12

Candidate Starts for Donkeykong_83:

(Start: 12 @49734 has 20 MA's), (14, 49749), (36, 49884), (42, 49968), (43, 49974), (44, 49977), (51, 50061),

Gene: Euphoria_59 Start: 40555, Stop: 40109, Start Num: 13

Candidate Starts for Euphoria_59:

(7, 40612), (8, 40609), (Start: 13 @40555 has 10 MA's), (20, 40498), (26, 40459), (27, 40441), (36, 40363), (40, 40291), (42, 40267), (49, 40195), (53, 40132),

Gene: Flathead_78 Start: 47777, Stop: 48157, Start Num: 12

Candidate Starts for Flathead_78:

(Start: 12 @47777 has 20 MA's), (14, 47792), (36, 47927), (42, 48011), (43, 48017), (44, 48020), (51, 48104),

Gene: FreddyB_88 Start: 49777, Stop: 50202, Start Num: 12

Candidate Starts for FreddyB_88:

(Start: 12 @49777 has 20 MA's), (14, 49792), (36, 49972), (42, 50056), (43, 50062), (44, 50065), (51, 50149),

Gene: Gorge_80 Start: 49405, Stop: 49830, Start Num: 12

Candidate Starts for Gorge_80:

(Start: 12 @49405 has 20 MA's), (14, 49420), (36, 49600), (42, 49684), (43, 49690), (44, 49693), (51, 49777),

Gene: Hegedechwinu_80 Start: 46978, Stop: 47358, Start Num: 12

Candidate Starts for Hegedechwinu_80:

(Start: 12 @46978 has 20 MA's), (14, 46993), (36, 47128), (42, 47212), (43, 47218), (44, 47221), (51, 47305),

Gene: Hughesyang_72 Start: 50943, Stop: 50497, Start Num: 13

Candidate Starts for Hughesyang_72:

(Start: 13 @50943 has 10 MA's), (14, 50931), (26, 50847), (27, 50829), (36, 50751), (40, 50679), (42, 50655), (49, 50583),

Gene: JalFarm20_87 Start: 48995, Stop: 49375, Start Num: 12

Candidate Starts for JalFarm20_87:

(5, 48899), (Start: 12 @48995 has 20 MA's), (14, 49010), (36, 49145), (42, 49229), (43, 49235), (44, 49238), (51, 49322),

Gene: Koella_70 Start: 44029, Stop: 44454, Start Num: 12

Candidate Starts for Koella_70:

(Start: 12 @44029 has 20 MA's), (14, 44044), (36, 44224), (42, 44308), (43, 44314), (44, 44317), (51, 44401),

Gene: LastJedi_70 Start: 46604, Stop: 47029, Start Num: 12

Candidate Starts for LastJedi_70:

(Start: 12 @46604 has 20 MA's), (14, 46619), (36, 46799), (42, 46883), (43, 46889), (44, 46892), (51, 46976),

Gene: Lizziana_83 Start: 49853, Stop: 50278, Start Num: 12

Candidate Starts for Lizziana_83:

(Start: 12 @49853 has 20 MA's), (14, 49868), (36, 50048), (42, 50132), (43, 50138), (44, 50141), (51, 50225),

Gene: Lucky2013_77 Start: 48582, Stop: 48184, Start Num: 13

Candidate Starts for Lucky2013_77:

(Start: 13 @48582 has 10 MA's), (14, 48570), (36, 48414), (42, 48330), (43, 48324), (44, 48321), (51, 48237),

Gene: MiaZeal_80 Start: 49238, Stop: 48840, Start Num: 13

Candidate Starts for MiaZeal_80:

(Start: 13 @49238 has 10 MA's), (14, 49226), (36, 49070), (42, 48986), (43, 48980), (44, 48977), (51, 48893),

Gene: MooMoo_48 Start: 36030, Stop: 36353, Start Num: 17

Candidate Starts for MooMoo_48:

(15, 36000), (Start: 17 @36030 has 1 MA's), (19, 36036), (21, 36045), (27, 36099), (28, 36123), (31, 36147), (34, 36156), (37, 36186), (38, 36192), (43, 36246), (47, 36273),

Gene: Ms6_77 Start: 44192, Stop: 44584, Start Num: 16

Candidate Starts for Ms6_77:

(2, 44018), (3, 44033), (4, 44042), (6, 44072), (16, 44192), (23, 44243), (25, 44252), (26, 44255), (32, 44327), (33, 44330), (37, 44369), (41, 44429), (49, 44510),

Gene: NormanBulbieJr_75 Start: 48043, Stop: 48468, Start Num: 12

Candidate Starts for NormanBulbieJr_75:

(Start: 12 @48043 has 20 MA's), (14, 48058), (36, 48238), (42, 48322), (43, 48328), (44, 48331), (51, 48415),

Gene: Peterson_65 Start: 43369, Stop: 42962, Start Num: 13

Candidate Starts for Peterson_65:

(1, 43570), (7, 43426), (8, 43423), (Start: 13 @43369 has 10 MA's), (14, 43357), (18, 43318), (35, 43216), (39, 43138), (45, 43084), (48, 43051), (50, 43042), (52, 42994),

Gene: Phalconet_76 Start: 47337, Stop: 47762, Start Num: 12

Candidate Starts for Phalconet_76:

(Start: 12 @47337 has 20 MA's), (14, 47352), (26, 47436), (27, 47454), (36, 47532), (42, 47616), (43, 47622), (44, 47625), (51, 47709),

Gene: PhesterPhotato_81 Start: 48233, Stop: 48610, Start Num: 12

Candidate Starts for PhesterPhotato_81:

(Start: 12 @48233 has 20 MA's), (14, 48248), (36, 48383), (42, 48470), (43, 48476), (46, 48500),

Gene: Porcelain_79 Start: 49238, Stop: 48840, Start Num: 13

Candidate Starts for Porcelain_79:

(Start: 13 @49238 has 10 MA's), (14, 49226), (36, 49070), (42, 48986), (43, 48980), (44, 48977), (51, 48893),

Gene: Priscilla_76 Start: 48141, Stop: 48566, Start Num: 12

Candidate Starts for Priscilla_76:

(Start: 12 @48141 has 20 MA's), (14, 48156), (36, 48336), (42, 48420), (43, 48426), (44, 48429), (51, 48513),

Gene: Saal_78 Start: 49224, Stop: 49649, Start Num: 12

Candidate Starts for Saal_78:

(Start: 12 @49224 has 20 MA's), (14, 49239), (36, 49419), (42, 49503), (43, 49509), (44, 49512), (51, 49596),

Gene: ShroomBoi_80 Start: 48740, Stop: 49138, Start Num: 12

Candidate Starts for ShroomBoi_80:

(Start: 12 @48740 has 20 MA's), (14, 48755), (36, 48911), (42, 48998), (43, 49004), (46, 49028),

Gene: Smooch_23 Start: 10621, Stop: 10995, Start Num: 10

Candidate Starts for Smooch_23:

(4, 10534), (9, 10591), (Start: 10 @10621 has 1 MA's), (Start: 13 @10633 has 10 MA's), (14, 10645), (36, 10765), (42, 10849), (43, 10855), (44, 10858), (51, 10942),

Gene: Squint_80 Start: 49357, Stop: 48959, Start Num: 13

Candidate Starts for Squint_80:

(Start: 13 @49357 has 10 MA's), (14, 49345), (36, 49189), (42, 49105), (43, 49099), (44, 49096), (51, 49012),

Gene: Superphikiman_77 Start: 48448, Stop: 48050, Start Num: 13

Candidate Starts for Superphikiman_77:

(Start: 13 @48448 has 10 MA's), (14, 48436), (36, 48280), (42, 48196), (43, 48190), (44, 48187), (51, 48103),

Gene: SwagPigglett_82 Start: 50360, Stop: 50785, Start Num: 12

Candidate Starts for SwagPigglett_82:

(Start: 12 @50360 has 20 MA's), (14, 50375), (36, 50555), (42, 50639), (43, 50645), (44, 50648), (51, 50732),

Gene: Taj_85 Start: 49957, Stop: 50334, Start Num: 12

Candidate Starts for Taj_85:

(Start: 12 @49957 has 20 MA's), (14, 49972), (27, 50050), (36, 50107), (42, 50191), (43, 50197), (44, 50200), (51, 50284),

Gene: Wee_84 Start: 50033, Stop: 50410, Start Num: 12

Candidate Starts for Wee_84:

(Start: 12 @50033 has 20 MA's), (14, 50048), (27, 50126), (36, 50183), (42, 50267), (43, 50273), (44, 50276), (51, 50360),

Gene: Zeeculate_77 Start: 48542, Stop: 48138, Start Num: 13

Candidate Starts for Zeeculate_77:

(Start: 13 @48542 has 10 MA's), (14, 48530), (24, 48467), (29, 48410), (36, 48368), (42, 48284), (43, 48278), (44, 48275), (51, 48191),