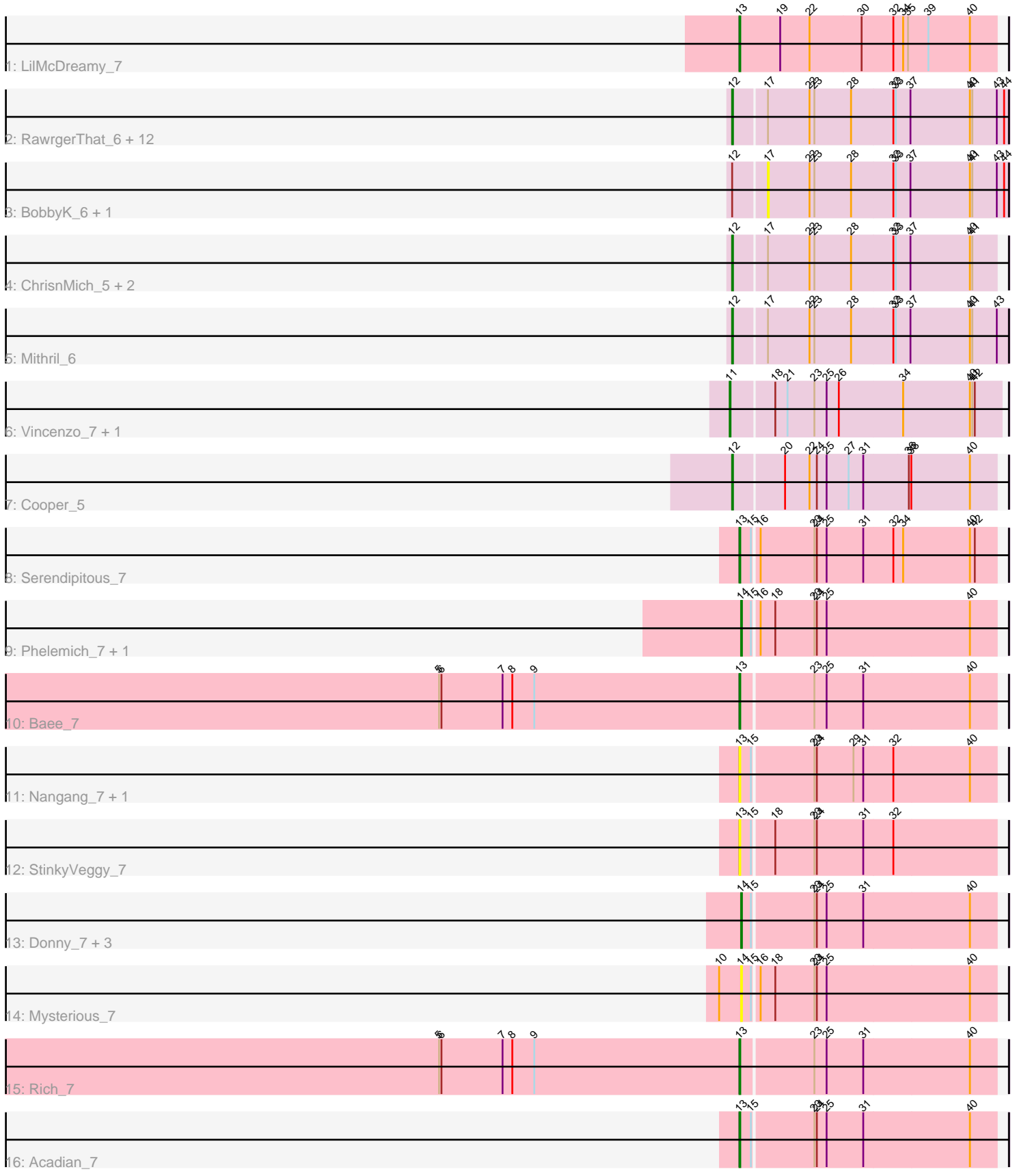


Zoomed Pham 158030



Note: Tracks are now grouped by subcluster and scaled. Switching in subcluster is indicated by changes in track color. Track scale is now set by default to display the region 30 bp upstream of start 1 to 30 bp downstream of the last possible start. If this default region is judged to be packed too tightly with annotated starts, the track will be further scaled to only show that region of the ORF with annotated starts. This action will be indicated by adding "Zoomed" to the title. For starts, yellow indicates the location of called starts comprised solely of Glimmer/GeneMark auto-annotations, green indicates the location of called starts with at least 1 manual gene annotation.

Pham 158030 Report

This analysis was run 04/13/24 on database version 558.

Pham number 158030 has 37 members, 10 are drafts.

Phages represented in each track:

- Track 1 : LilMcDreamy_7
- Track 2 : RawrgerThat_6, Hydro_6, Magpie_6, Zemanar_6, Lolalove_6, Waleliano_6, VioletZ_6, Mudslide_6, Hangman_6, BrownCNA_6, Austelle_6, Heath_6, Fortunato_5
- Track 3 : BobbyK_6, Prince_6
- Track 4 : ChrisnMich_5, Nanao_5, Poster_5
- Track 5 : Mithril_6
- Track 6 : Vincenzo_7, AlanGrant_7
- Track 7 : Cooper_5
- Track 8 : Serendipitous_7
- Track 9 : Phelemich_7, Reprobate_7
- Track 10 : Bae_7
- Track 11 : Nangang_7, DigitDog_7
- Track 12 : StinkyVeggy_7
- Track 13 : Donny_7, EastView9101_7, SirJeffery_7, Suigeneris_7
- Track 14 : Mysterious_7
- Track 15 : Rich_7
- Track 16 : Acadian_7

Summary of Final Annotations (See graph section above for start numbers):

The start number called the most often in the published annotations is 12, it was called in 16 of the 27 non-draft genes in the pham.

Genes that call this "Most Annotated" start:

- Austelle_6, BrownCNA_6, ChrisnMich_5, Cooper_5, Fortunato_5, Hangman_6, Heath_6, Hydro_6, Lolalove_6, Magpie_6, Mithril_6, Mudslide_6, Nanao_5, Poster_5, RawrgerThat_6, VioletZ_6, Waleliano_6, Zemanar_6,

Genes that have the "Most Annotated" start but do not call it:

- BobbyK_6, Prince_6,

Genes that do not have the "Most Annotated" start:

- Acadian_7, AlanGrant_7, Bae_7, DigitDog_7, Donny_7, EastView9101_7, LilMcDreamy_7, Mysterious_7, Nangang_7, Phelemich_7, Reprobate_7, Rich_7, Serendipitous_7, SirJeffery_7, StinkyVeggy_7, Suigeneris_7, Vincenzo_7,

Summary by start number:

Start 11:

- Found in 2 of 37 (5.4%) of genes in pham
- Manual Annotations of this start: 2 of 27
- Called 100.0% of time when present
- Phage (with cluster) where this start called: AlanGrant_7 (B4), Vincenzo_7 (B4),

Start 12:

- Found in 20 of 37 (54.1%) of genes in pham
- Manual Annotations of this start: 16 of 27
- Called 90.0% of time when present
- Phage (with cluster) where this start called: Austelle_6 (B4), BrownCNA_6 (B4), ChrisnMich_5 (B4), Cooper_5 (B4), Fortunato_5 (B4), Hangman_6 (B4), Heath_6 (B4), Hydro_6 (B4), Lolalove_6 (B4), Magpie_6 (B4), Mithril_6 (B4), Mudslide_6 (B4), Nanao_5 (B4), Poster_5 (B4), RawrgerThat_6 (B4), VioletZ_6 (B4), Waleliano_6 (B4), Zemanar_6 (B4),

Start 13:

- Found in 8 of 37 (21.6%) of genes in pham
- Manual Annotations of this start: 5 of 27
- Called 100.0% of time when present
- Phage (with cluster) where this start called: Acadian_7 (B5), Bae_7 (B5), DigitDog_7 (B5), LilMcDreamy_7 (B12), Nangang_7 (B5), Rich_7 (B5), Serendipitous_7 (B5), StinkyVeggy_7 (B5),

Start 14:

- Found in 7 of 37 (18.9%) of genes in pham
- Manual Annotations of this start: 4 of 27
- Called 100.0% of time when present
- Phage (with cluster) where this start called: Donny_7 (B5), EastView9101_7 (B5), Mysterious_7 (B5), Phelemich_7 (B5), Reprobate_7 (B5), SirJeffery_7 (B5), Suigeneris_7 (B5),

Start 17:

- Found in 19 of 37 (51.4%) of genes in pham
- No Manual Annotations of this start.
- Called 10.5% of time when present
- Phage (with cluster) where this start called: BobbyK_6 (B4), Prince_6 (B4),

Summary by clusters:

There are 3 clusters represented in this pham: B4, B5, B12,

Info for manual annotations of cluster B12:

- Start number 13 was manually annotated 1 time for cluster B12.

Info for manual annotations of cluster B4:

- Start number 11 was manually annotated 2 times for cluster B4.

- Start number 12 was manually annotated 16 times for cluster B4.

Info for manual annotations of cluster B5:

- Start number 13 was manually annotated 4 times for cluster B5.
- Start number 14 was manually annotated 4 times for cluster B5.

Gene Information:

Gene: Acadian_7 Start: 5649, Stop: 5344, Start Num: 13

Candidate Starts for Acadian_7:

(Start: 13 @5649 has 5 MA's), (15, 5637), (23, 5565), (24, 5562), (25, 5550), (31, 5505), (40, 5376),

Gene: AlanGrant_7 Start: 6363, Stop: 6037, Start Num: 11

Candidate Starts for AlanGrant_7:

(Start: 11 @6363 has 2 MA's), (18, 6312), (21, 6297), (23, 6264), (25, 6249), (26, 6234), (34, 6156), (40, 6075), (41, 6072), (42, 6069),

Gene: Austelle_6 Start: 5520, Stop: 5188, Start Num: 12

Candidate Starts for Austelle_6:

(Start: 12 @5520 has 16 MA's), (17, 5481), (22, 5430), (23, 5424), (28, 5379), (32, 5328), (33, 5325), (37, 5307), (40, 5235), (41, 5232), (43, 5202), (44, 5193),

Gene: Bae_7 Start: 5655, Stop: 5350, Start Num: 13

Candidate Starts for Bae_7:

(1, 6708), (2, 6675), (3, 6603), (4, 6564), (5, 6024), (6, 6021), (7, 5946), (8, 5934), (9, 5907), (Start: 13 @5655 has 5 MA's), (23, 5571), (25, 5556), (31, 5511), (40, 5382),

Gene: BobbyK_6 Start: 5478, Stop: 5185, Start Num: 17

Candidate Starts for BobbyK_6:

(Start: 12 @5517 has 16 MA's), (17, 5478), (22, 5427), (23, 5421), (28, 5376), (32, 5325), (33, 5322), (37, 5304), (40, 5232), (41, 5229), (43, 5199), (44, 5190),

Gene: BrownCNA_6 Start: 5520, Stop: 5188, Start Num: 12

Candidate Starts for BrownCNA_6:

(Start: 12 @5520 has 16 MA's), (17, 5481), (22, 5430), (23, 5424), (28, 5379), (32, 5328), (33, 5325), (37, 5307), (40, 5235), (41, 5232), (43, 5202), (44, 5193),

Gene: ChrisnMich_5 Start: 4423, Stop: 4106, Start Num: 12

Candidate Starts for ChrisnMich_5:

(Start: 12 @4423 has 16 MA's), (17, 4384), (22, 4333), (23, 4327), (28, 4282), (32, 4231), (33, 4228), (37, 4210), (40, 4138), (41, 4135),

Gene: Cooper_5 Start: 4445, Stop: 4128, Start Num: 12

Candidate Starts for Cooper_5:

(Start: 12 @4445 has 16 MA's), (20, 4385), (22, 4355), (24, 4346), (25, 4334), (27, 4307), (31, 4289), (36, 4235), (38, 4232), (40, 4160),

Gene: DigitDog_7 Start: 5640, Stop: 5335, Start Num: 13

Candidate Starts for DigitDog_7:

(Start: 13 @5640 has 5 MA's), (15, 5628), (23, 5556), (24, 5553), (29, 5508), (31, 5496), (32, 5460), (40, 5367),

Gene: Donny_7 Start: 5649, Stop: 5344, Start Num: 14

Candidate Starts for Donny_7:

(Start: 14 @5649 has 4 MA's), (15, 5637), (23, 5565), (24, 5562), (25, 5550), (31, 5505), (40, 5376),

Gene: EastView9101_7 Start: 5649, Stop: 5344, Start Num: 14

Candidate Starts for EastView9101_7:

(Start: 14 @5649 has 4 MA's), (15, 5637), (23, 5565), (24, 5562), (25, 5550), (31, 5505), (40, 5376),

Gene: Fortunato_5 Start: 5517, Stop: 5185, Start Num: 12

Candidate Starts for Fortunato_5:

(Start: 12 @5517 has 16 MA's), (17, 5478), (22, 5427), (23, 5421), (28, 5376), (32, 5325), (33, 5322), (37, 5304), (40, 5232), (41, 5229), (43, 5199), (44, 5190),

Gene: Hangman_6 Start: 5520, Stop: 5188, Start Num: 12

Candidate Starts for Hangman_6:

(Start: 12 @5520 has 16 MA's), (17, 5481), (22, 5430), (23, 5424), (28, 5379), (32, 5328), (33, 5325), (37, 5307), (40, 5235), (41, 5232), (43, 5202), (44, 5193),

Gene: Heath_6 Start: 5520, Stop: 5188, Start Num: 12

Candidate Starts for Heath_6:

(Start: 12 @5520 has 16 MA's), (17, 5481), (22, 5430), (23, 5424), (28, 5379), (32, 5328), (33, 5325), (37, 5307), (40, 5235), (41, 5232), (43, 5202), (44, 5193),

Gene: Hydro_6 Start: 5517, Stop: 5185, Start Num: 12

Candidate Starts for Hydro_6:

(Start: 12 @5517 has 16 MA's), (17, 5478), (22, 5427), (23, 5421), (28, 5376), (32, 5325), (33, 5322), (37, 5304), (40, 5232), (41, 5229), (43, 5199), (44, 5190),

Gene: LilMcDreamy_7 Start: 6421, Stop: 6110, Start Num: 13

Candidate Starts for LilMcDreamy_7:

(Start: 13 @6421 has 5 MA's), (19, 6373), (22, 6337), (30, 6274), (32, 6235), (34, 6223), (35, 6217), (39, 6193), (40, 6142),

Gene: Lolalove_6 Start: 5517, Stop: 5185, Start Num: 12

Candidate Starts for Lolalove_6:

(Start: 12 @5517 has 16 MA's), (17, 5478), (22, 5427), (23, 5421), (28, 5376), (32, 5325), (33, 5322), (37, 5304), (40, 5232), (41, 5229), (43, 5199), (44, 5190),

Gene: Magpie_6 Start: 5517, Stop: 5185, Start Num: 12

Candidate Starts for Magpie_6:

(Start: 12 @5517 has 16 MA's), (17, 5478), (22, 5427), (23, 5421), (28, 5376), (32, 5325), (33, 5322), (37, 5304), (40, 5232), (41, 5229), (43, 5199), (44, 5190),

Gene: Mithril_6 Start: 5520, Stop: 5188, Start Num: 12

Candidate Starts for Mithril_6:

(Start: 12 @5520 has 16 MA's), (17, 5481), (22, 5430), (23, 5424), (28, 5379), (32, 5328), (33, 5325), (37, 5307), (40, 5235), (41, 5232), (43, 5202),

Gene: Mudslide_6 Start: 5517, Stop: 5185, Start Num: 12

Candidate Starts for Mudslide_6:

(Start: 12 @5517 has 16 MA's), (17, 5478), (22, 5427), (23, 5421), (28, 5376), (32, 5325), (33, 5322), (37, 5304), (40, 5232), (41, 5229), (43, 5199), (44, 5190),

Gene: Mysterious_7 Start: 5924, Stop: 5619, Start Num: 14

Candidate Starts for Mysterious_7:

(10, 5951), (Start: 14 @5924 has 4 MA's), (15, 5912), (16, 5906), (18, 5888), (23, 5840), (24, 5837), (25, 5825), (40, 5651),

Gene: Nanao_5 Start: 4423, Stop: 4106, Start Num: 12

Candidate Starts for Nanao_5:

(Start: 12 @4423 has 16 MA's), (17, 4384), (22, 4333), (23, 4327), (28, 4282), (32, 4231), (33, 4228), (37, 4210), (40, 4138), (41, 4135),

Gene: Nangang_7 Start: 5640, Stop: 5335, Start Num: 13

Candidate Starts for Nangang_7:

(Start: 13 @5640 has 5 MA's), (15, 5628), (23, 5556), (24, 5553), (29, 5508), (31, 5496), (32, 5460), (40, 5367),

Gene: Phelemich_7 Start: 5927, Stop: 5622, Start Num: 14

Candidate Starts for Phelemich_7:

(Start: 14 @5927 has 4 MA's), (15, 5915), (16, 5909), (18, 5891), (23, 5843), (24, 5840), (25, 5828), (40, 5654),

Gene: Poster_5 Start: 4423, Stop: 4106, Start Num: 12

Candidate Starts for Poster_5:

(Start: 12 @4423 has 16 MA's), (17, 4384), (22, 4333), (23, 4327), (28, 4282), (32, 4231), (33, 4228), (37, 4210), (40, 4138), (41, 4135),

Gene: Prince_6 Start: 5481, Stop: 5188, Start Num: 17

Candidate Starts for Prince_6:

(Start: 12 @5520 has 16 MA's), (17, 5481), (22, 5430), (23, 5424), (28, 5379), (32, 5328), (33, 5325), (37, 5307), (40, 5235), (41, 5232), (43, 5202), (44, 5193),

Gene: RawrgerThat_6 Start: 5517, Stop: 5185, Start Num: 12

Candidate Starts for RawrgerThat_6:

(Start: 12 @5517 has 16 MA's), (17, 5478), (22, 5427), (23, 5421), (28, 5376), (32, 5325), (33, 5322), (37, 5304), (40, 5232), (41, 5229), (43, 5199), (44, 5190),

Gene: Reprobate_7 Start: 5924, Stop: 5619, Start Num: 14

Candidate Starts for Reprobate_7:

(Start: 14 @5924 has 4 MA's), (15, 5912), (16, 5906), (18, 5888), (23, 5840), (24, 5837), (25, 5825), (40, 5651),

Gene: Rich_7 Start: 5652, Stop: 5347, Start Num: 13

Candidate Starts for Rich_7:

(4, 6561), (5, 6021), (6, 6018), (7, 5943), (8, 5931), (9, 5904), (Start: 13 @5652 has 5 MA's), (23, 5568), (25, 5553), (31, 5508), (40, 5379),

Gene: Serendipitous_7 Start: 5706, Stop: 5401, Start Num: 13

Candidate Starts for Serendipitous_7:

(Start: 13 @5706 has 5 MA's), (15, 5694), (16, 5688), (23, 5622), (24, 5619), (25, 5607), (31, 5562), (32, 5526), (34, 5514), (40, 5433), (42, 5427),

Gene: SirJeffery_7 Start: 5649, Stop: 5344, Start Num: 14

Candidate Starts for SirJeffery_7:

(Start: 14 @5649 has 4 MA's), (15, 5637), (23, 5565), (24, 5562), (25, 5550), (31, 5505), (40, 5376),

Gene: StinkyVeggy_7 Start: 5637, Stop: 5332, Start Num: 13

Candidate Starts for StinkyVeggy_7:

(Start: 13 @5637 has 5 MA's), (15, 5625), (18, 5601), (23, 5553), (24, 5550), (31, 5493), (32, 5457),

Gene: Suigeneris_7 Start: 5649, Stop: 5344, Start Num: 14

Candidate Starts for Suigeneris_7:

(Start: 14 @5649 has 4 MA's), (15, 5637), (23, 5565), (24, 5562), (25, 5550), (31, 5505), (40, 5376),

Gene: Vincenzo_7 Start: 6363, Stop: 6037, Start Num: 11

Candidate Starts for Vincenzo_7:

(Start: 11 @6363 has 2 MA's), (18, 6312), (21, 6297), (23, 6264), (25, 6249), (26, 6234), (34, 6156), (40, 6075), (41, 6072), (42, 6069),

Gene: VioletZ_6 Start: 5520, Stop: 5188, Start Num: 12

Candidate Starts for VioletZ_6:

(Start: 12 @5520 has 16 MA's), (17, 5481), (22, 5430), (23, 5424), (28, 5379), (32, 5328), (33, 5325), (37, 5307), (40, 5235), (41, 5232), (43, 5202), (44, 5193),

Gene: Waleliano_6 Start: 5520, Stop: 5188, Start Num: 12

Candidate Starts for Waleliano_6:

(Start: 12 @5520 has 16 MA's), (17, 5481), (22, 5430), (23, 5424), (28, 5379), (32, 5328), (33, 5325), (37, 5307), (40, 5235), (41, 5232), (43, 5202), (44, 5193),

Gene: Zemanar_6 Start: 5520, Stop: 5188, Start Num: 12

Candidate Starts for Zemanar_6:

(Start: 12 @5520 has 16 MA's), (17, 5481), (22, 5430), (23, 5424), (28, 5379), (32, 5328), (33, 5325), (37, 5307), (40, 5235), (41, 5232), (43, 5202), (44, 5193),