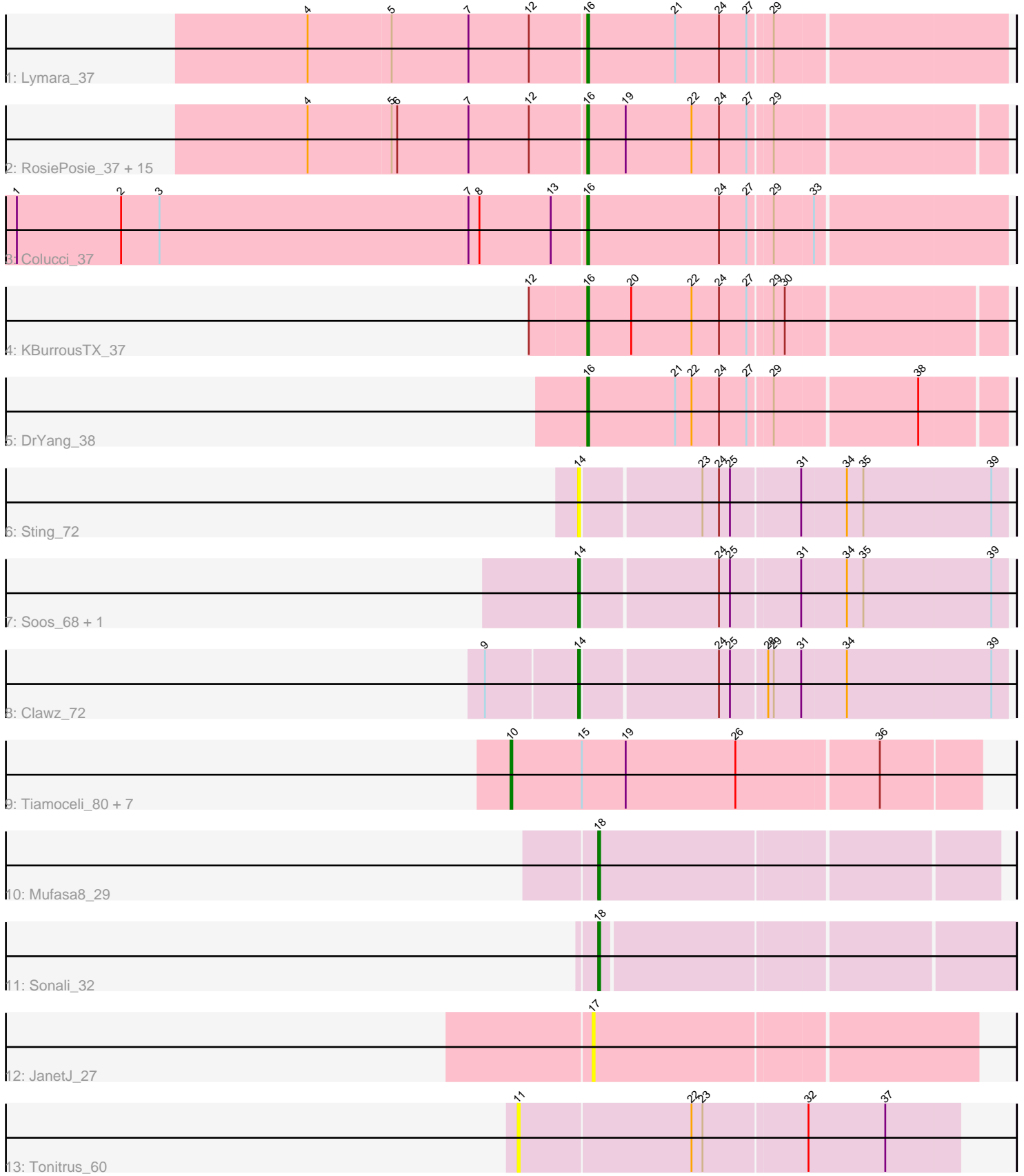


Pham 158040



Note: Tracks are now grouped by subcluster and scaled. Switching in subcluster is indicated by changes in track color. Track scale is now set by default to display the region 30 bp upstream of start 1 to 30 bp downstream of the last possible start. If this default region is judged to be packed too tightly with annotated starts, the track will be further scaled to only show that region of the ORF with annotated starts. This action will be indicated by adding "Zoomed" to the title. For starts, yellow indicates the location of called starts comprised solely of Glimmer/GeneMark auto-annotations, green indicates the location of called starts with at least 1 manual gene annotation.

Pham 158040 Report

This analysis was run 04/13/24 on database version 558.

Pham number 158040 has 36 members, 8 are drafts.

Phages represented in each track:

- Track 1 : Lymara_37
- Track 2 : RosiePosie_37, EdgarPoe_37, Mordred_37, Linus_37, Tophat_37, JayCookie_37, HumptyDumpty_37, Chipper1996_370, Chocolat_37, MoyaNatalis_37, Kabreeze_37, Conboy_37, Scavito_37, PrincessTrina_37, JaNo_37, Chubster_37
- Track 3 : Colucci_37
- Track 4 : KBurrousTX_37
- Track 5 : DrYang_38
- Track 6 : Sting_72
- Track 7 : Soos_68, DonTron_72
- Track 8 : Clawz_72
- Track 9 : Tiamoceli_80, Chickadee_87, Twonlo_84, EdmundFerry_85, GTE6_86, RoadKill_84, Kwekel_87, Dextert_82
- Track 10 : Mufasa8_29
- Track 11 : Sonali_32
- Track 12 : JanetJ_27
- Track 13 : Tonitrus_60

Summary of Final Annotations (See graph section above for start numbers):

The start number called the most often in the published annotations is 16, it was called in 18 of the 28 non-draft genes in the pham.

Genes that call this "Most Annotated" start:

- Chipper1996_370, Chocolat_37, Chubster_37, Colucci_37, Conboy_37, DrYang_38, EdgarPoe_37, HumptyDumpty_37, JaNo_37, JayCookie_37, KBurrousTX_37, Kabreeze_37, Linus_37, Lymara_37, Mordred_37, MoyaNatalis_37, PrincessTrina_37, RosiePosie_37, Scavito_37, Tophat_37,

Genes that have the "Most Annotated" start but do not call it:

-

Genes that do not have the "Most Annotated" start:

- Chickadee_87, Clawz_72, Dexdert_82, DonTron_72, EdmundFerry_85, GTE6_86, JanetJ_27, Kwekel_87, Mufasa8_29, RoadKill_84, Sonali_32, Soos_68, Sting_72, Tiamoceli_80, Tonitrus_60, Twonlo_84,

Summary by start number:

Start 10:

- Found in 8 of 36 (22.2%) of genes in pham
- Manual Annotations of this start: 6 of 28
- Called 100.0% of time when present
- Phage (with cluster) where this start called: Chickadee_87 (DE3), Dexdert_82 (DE3), EdmundFerry_85 (DE3), GTE6_86 (DE3), Kwekel_87 (DE3), RoadKill_84 (DE3), Tiamoceli_80 (DE3), Twonlo_84 (DE3),

Start 11:

- Found in 1 of 36 (2.8%) of genes in pham
- No Manual Annotations of this start.
- Called 100.0% of time when present
- Phage (with cluster) where this start called: Tonitrus_60 (singleton),

Start 14:

- Found in 4 of 36 (11.1%) of genes in pham
- Manual Annotations of this start: 2 of 28
- Called 100.0% of time when present
- Phage (with cluster) where this start called: Clawz_72 (CP), DonTron_72 (CP), Soos_68 (CP), Sting_72 (CP),

Start 16:

- Found in 20 of 36 (55.6%) of genes in pham
- Manual Annotations of this start: 18 of 28
- Called 100.0% of time when present
- Phage (with cluster) where this start called: Chipper1996_370 (AR), Chocolat_37 (AR), Chubster_37 (AR), Colucci_37 (AR), Conboy_37 (AR), DrYang_38 (AR), EdgarPoe_37 (AR), HumptyDumpty_37 (AR), JaNo_37 (AR), JayCookie_37 (AR), KBurrousTX_37 (AR), Kabreeze_37 (AR), Linus_37 (AR), Lymara_37 (AR), Mordred_37 (AR), MoyaNatalis_37 (AR), PrincessTrina_37 (AR), RosiePosie_37 (AR), Scavito_37 (AR), Tophat_37 (AR),

Start 17:

- Found in 1 of 36 (2.8%) of genes in pham
- No Manual Annotations of this start.
- Called 100.0% of time when present
- Phage (with cluster) where this start called: JanetJ_27 (FO),

Start 18:

- Found in 2 of 36 (5.6%) of genes in pham
- Manual Annotations of this start: 2 of 28
- Called 100.0% of time when present
- Phage (with cluster) where this start called: Mufasa8_29 (FG), Sonali_32 (FG),

Summary by clusters:

There are 6 clusters represented in this pham: singleton, DE3, AR, FG, CP, FO,

Info for manual annotations of cluster AR:

- Start number 16 was manually annotated 18 times for cluster AR.

Info for manual annotations of cluster CP:

- Start number 14 was manually annotated 2 times for cluster CP.

Info for manual annotations of cluster DE3:

- Start number 10 was manually annotated 6 times for cluster DE3.

Info for manual annotations of cluster FG:

- Start number 18 was manually annotated 2 times for cluster FG.

Gene Information:

Gene: Chickadee_87 Start: 56050, Stop: 56301, Start Num: 10

Candidate Starts for Chickadee_87:

(Start: 10 @56050 has 6 MA's), (15, 56089), (19, 56113), (26, 56173), (36, 56248),

Gene: Chipper1996_370 Start: 30385, Stop: 30167, Start Num: 16

Candidate Starts for Chipper1996_370:

(4, 30535), (5, 30490), (6, 30487), (7, 30448), (12, 30415), (Start: 16 @30385 has 18 MA's), (19, 30364), (22, 30328), (24, 30313), (27, 30298), (29, 30286),

Gene: Chocolat_37 Start: 30385, Stop: 30167, Start Num: 16

Candidate Starts for Chocolat_37:

(4, 30535), (5, 30490), (6, 30487), (7, 30448), (12, 30415), (Start: 16 @30385 has 18 MA's), (19, 30364), (22, 30328), (24, 30313), (27, 30298), (29, 30286),

Gene: Chubster_37 Start: 30157, Stop: 29939, Start Num: 16

Candidate Starts for Chubster_37:

(4, 30307), (5, 30262), (6, 30259), (7, 30220), (12, 30187), (Start: 16 @30157 has 18 MA's), (19, 30136), (22, 30100), (24, 30085), (27, 30070), (29, 30058),

Gene: Clawz_72 Start: 48155, Stop: 48379, Start Num: 14

Candidate Starts for Clawz_72:

(9, 48107), (Start: 14 @48155 has 2 MA's), (24, 48227), (25, 48233), (28, 48251), (29, 48254), (31, 48269), (34, 48293), (39, 48371),

Gene: Colucci_37 Start: 29963, Stop: 29742, Start Num: 16

Candidate Starts for Colucci_37:

(1, 30272), (2, 30215), (3, 30194), (7, 30026), (8, 30020), (13, 29981), (Start: 16 @29963 has 18 MA's), (24, 29891), (27, 29876), (29, 29864), (33, 29843),

Gene: Conboy_37 Start: 30384, Stop: 30166, Start Num: 16

Candidate Starts for Conboy_37:

(4, 30534), (5, 30489), (6, 30486), (7, 30447), (12, 30414), (Start: 16 @30384 has 18 MA's), (19, 30363), (22, 30327), (24, 30312), (27, 30297), (29, 30285),

Gene: Dexdert_82 Start: 54559, Stop: 54810, Start Num: 10

Candidate Starts for Dextert_82:

(Start: 10 @54559 has 6 MA's), (15, 54598), (19, 54622), (26, 54682), (36, 54757),

Gene: DonTron_72 Start: 48395, Stop: 48619, Start Num: 14

Candidate Starts for DonTron_72:

(Start: 14 @48395 has 2 MA's), (24, 48467), (25, 48473), (31, 48509), (34, 48533), (35, 48542), (39, 48611),

Gene: DrYang_38 Start: 31723, Stop: 31505, Start Num: 16

Candidate Starts for DrYang_38:

(Start: 16 @31723 has 18 MA's), (21, 31675), (22, 31666), (24, 31651), (27, 31636), (29, 31624), (38, 31549),

Gene: EdgarPoe_37 Start: 30384, Stop: 30166, Start Num: 16

Candidate Starts for EdgarPoe_37:

(4, 30534), (5, 30489), (6, 30486), (7, 30447), (12, 30414), (Start: 16 @30384 has 18 MA's), (19, 30363), (22, 30327), (24, 30312), (27, 30297), (29, 30285),

Gene: EdmundFerry_85 Start: 55426, Stop: 55677, Start Num: 10

Candidate Starts for EdmundFerry_85:

(Start: 10 @55426 has 6 MA's), (15, 55465), (19, 55489), (26, 55549), (36, 55624),

Gene: GTE6_86 Start: 56599, Stop: 56850, Start Num: 10

Candidate Starts for GTE6_86:

(Start: 10 @56599 has 6 MA's), (15, 56638), (19, 56662), (26, 56722), (36, 56797),

Gene: HumptyDumpty_37 Start: 30383, Stop: 30165, Start Num: 16

Candidate Starts for HumptyDumpty_37:

(4, 30533), (5, 30488), (6, 30485), (7, 30446), (12, 30413), (Start: 16 @30383 has 18 MA's), (19, 30362), (22, 30326), (24, 30311), (27, 30296), (29, 30284),

Gene: JaNo_37 Start: 30383, Stop: 30165, Start Num: 16

Candidate Starts for JaNo_37:

(4, 30533), (5, 30488), (6, 30485), (7, 30446), (12, 30413), (Start: 16 @30383 has 18 MA's), (19, 30362), (22, 30326), (24, 30311), (27, 30296), (29, 30284),

Gene: JanetJ_27 Start: 24007, Stop: 23804, Start Num: 17

Candidate Starts for JanetJ_27:

(17, 24007),

Gene: JayCookie_37 Start: 30387, Stop: 30169, Start Num: 16

Candidate Starts for JayCookie_37:

(4, 30537), (5, 30492), (6, 30489), (7, 30450), (12, 30417), (Start: 16 @30387 has 18 MA's), (19, 30366), (22, 30330), (24, 30315), (27, 30300), (29, 30288),

Gene: KBurrousTX_37 Start: 31486, Stop: 31268, Start Num: 16

Candidate Starts for KBurrousTX_37:

(12, 31513), (Start: 16 @31486 has 18 MA's), (20, 31462), (22, 31429), (24, 31414), (27, 31399), (29, 31387), (30, 31381),

Gene: Kabreeze_37 Start: 30383, Stop: 30165, Start Num: 16

Candidate Starts for Kabreeze_37:

(4, 30533), (5, 30488), (6, 30485), (7, 30446), (12, 30413), (Start: 16 @30383 has 18 MA's), (19, 30362), (22, 30326), (24, 30311), (27, 30296), (29, 30284),

Gene: Kwekel_87 Start: 55963, Stop: 56214, Start Num: 10

Candidate Starts for Kwekel_87:

(Start: 10 @55963 has 6 MA's), (15, 56002), (19, 56026), (26, 56086), (36, 56161),

Gene: Linus_37 Start: 30384, Stop: 30166, Start Num: 16

Candidate Starts for Linus_37:

(4, 30534), (5, 30489), (6, 30486), (7, 30447), (12, 30414), (Start: 16 @30384 has 18 MA's), (19, 30363), (22, 30327), (24, 30312), (27, 30297), (29, 30285),

Gene: Lymara_37 Start: 30202, Stop: 29981, Start Num: 16

Candidate Starts for Lymara_37:

(4, 30352), (5, 30307), (7, 30265), (12, 30232), (Start: 16 @30202 has 18 MA's), (21, 30154), (24, 30130), (27, 30115), (29, 30103),

Gene: Mordred_37 Start: 30383, Stop: 30165, Start Num: 16

Candidate Starts for Mordred_37:

(4, 30533), (5, 30488), (6, 30485), (7, 30446), (12, 30413), (Start: 16 @30383 has 18 MA's), (19, 30362), (22, 30326), (24, 30311), (27, 30296), (29, 30284),

Gene: MoyaNatalis_37 Start: 30387, Stop: 30169, Start Num: 16

Candidate Starts for MoyaNatalis_37:

(4, 30537), (5, 30492), (6, 30489), (7, 30450), (12, 30417), (Start: 16 @30387 has 18 MA's), (19, 30366), (22, 30330), (24, 30315), (27, 30300), (29, 30288),

Gene: Mufasa8_29 Start: 27032, Stop: 26823, Start Num: 18

Candidate Starts for Mufasa8_29:

(Start: 18 @27032 has 2 MA's),

Gene: PrincessTrina_37 Start: 30387, Stop: 30169, Start Num: 16

Candidate Starts for PrincessTrina_37:

(4, 30537), (5, 30492), (6, 30489), (7, 30450), (12, 30417), (Start: 16 @30387 has 18 MA's), (19, 30366), (22, 30330), (24, 30315), (27, 30300), (29, 30288),

Gene: RoadKill_84 Start: 55492, Stop: 55743, Start Num: 10

Candidate Starts for RoadKill_84:

(Start: 10 @55492 has 6 MA's), (15, 55531), (19, 55555), (26, 55615), (36, 55690),

Gene: RosiePosie_37 Start: 30386, Stop: 30168, Start Num: 16

Candidate Starts for RosiePosie_37:

(4, 30536), (5, 30491), (6, 30488), (7, 30449), (12, 30416), (Start: 16 @30386 has 18 MA's), (19, 30365), (22, 30329), (24, 30314), (27, 30299), (29, 30287),

Gene: Scavito_37 Start: 30384, Stop: 30166, Start Num: 16

Candidate Starts for Scavito_37:

(4, 30534), (5, 30489), (6, 30486), (7, 30447), (12, 30414), (Start: 16 @30384 has 18 MA's), (19, 30363), (22, 30327), (24, 30312), (27, 30297), (29, 30285),

Gene: Sonali_32 Start: 30335, Stop: 30120, Start Num: 18

Candidate Starts for Sonali_32:

(Start: 18 @30335 has 2 MA's),

Gene: Soos_68 Start: 47562, Stop: 47786, Start Num: 14

Candidate Starts for Soos_68:

(Start: 14 @47562 has 2 MA's), (24, 47634), (25, 47640), (31, 47676), (34, 47700), (35, 47709), (39, 47778),

Gene: Sting_72 Start: 48001, Stop: 48225, Start Num: 14

Candidate Starts for Sting_72:

(Start: 14 @48001 has 2 MA's), (23, 48064), (24, 48073), (25, 48079), (31, 48115), (34, 48139), (35, 48148), (39, 48217),

Gene: Tiamoceli_80 Start: 55382, Stop: 55633, Start Num: 10

Candidate Starts for Tiamoceli_80:

(Start: 10 @55382 has 6 MA's), (15, 55421), (19, 55445), (26, 55505), (36, 55580),

Gene: Tonitrus_60 Start: 44270, Stop: 44503, Start Num: 11

Candidate Starts for Tonitrus_60:

(11, 44270), (22, 44363), (23, 44369), (32, 44423), (37, 44465),

Gene: Tophat_37 Start: 30385, Stop: 30167, Start Num: 16

Candidate Starts for Tophat_37:

(4, 30535), (5, 30490), (6, 30487), (7, 30448), (12, 30415), (Start: 16 @30385 has 18 MA's), (19, 30364), (22, 30328), (24, 30313), (27, 30298), (29, 30286),

Gene: Twonlo_84 Start: 56083, Stop: 56334, Start Num: 10

Candidate Starts for Twonlo_84:

(Start: 10 @56083 has 6 MA's), (15, 56122), (19, 56146), (26, 56206), (36, 56281),