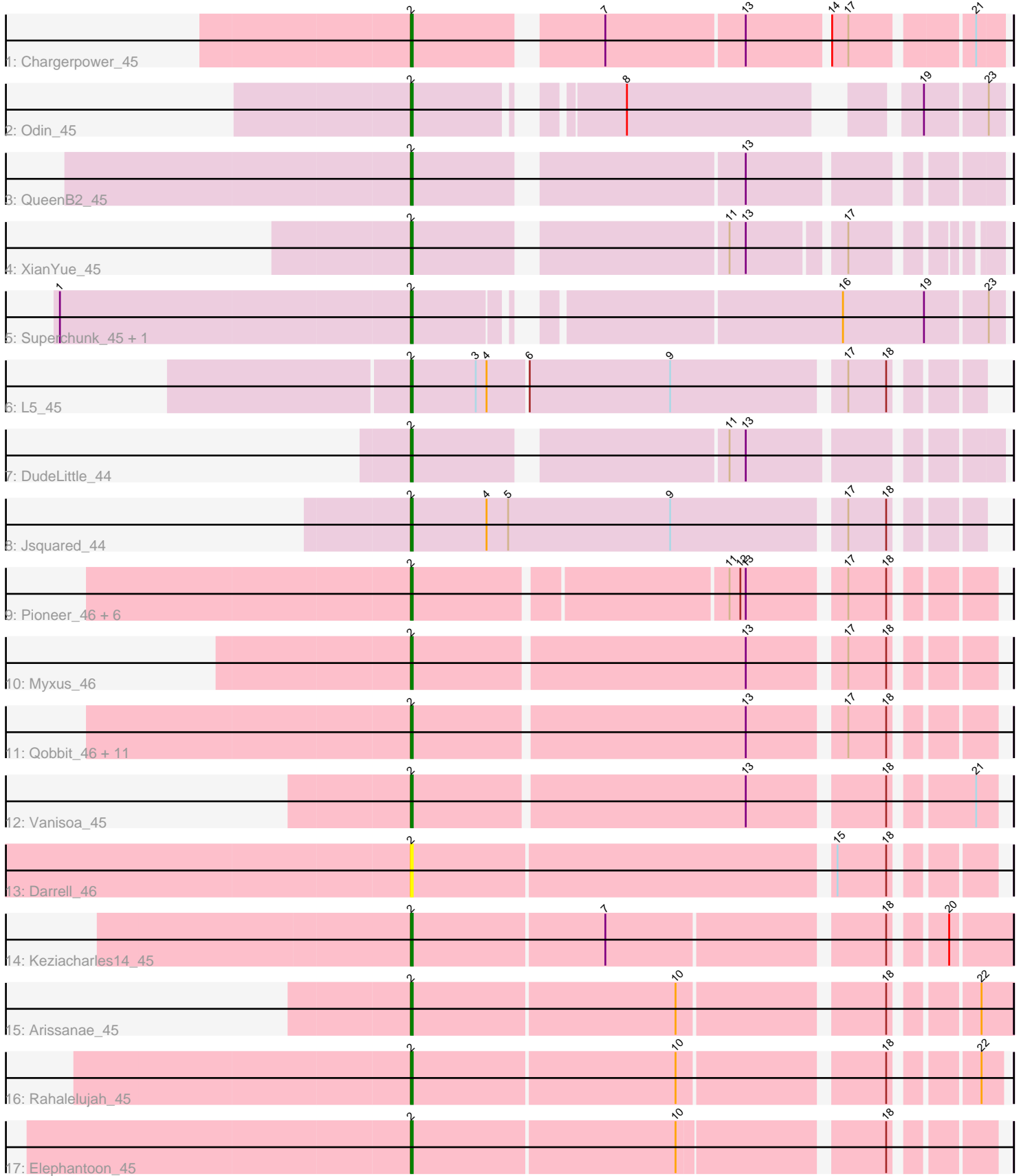


Pham 158046



Note: Tracks are now grouped by subcluster and scaled. Switching in subcluster is indicated by changes in track color. Track scale is now set by default to display the region 30 bp upstream of start 1 to 30 bp downstream of the last possible start. If this default region is judged to be packed too tightly with annotated starts, the track will be further scaled to only show that region of the ORF with annotated starts. This action will be indicated by adding "Zoomed" to the title. For starts, yellow indicates the location of called starts comprised solely of Glimmer/GeneMark auto-annotations, green indicates the location of called starts with at least 1 manual gene annotation.

Pham 158046 Report

This analysis was run 04/13/24 on database version 558.

Pham number 158046 has 35 members, 4 are drafts.

Phages represented in each track:

- Track 1 : Chargerpower_45
- Track 2 : Odin_45
- Track 3 : QueenB2_45
- Track 4 : XianYue_45
- Track 5 : Superchunk_45, Caraxes_46
- Track 6 : L5_45
- Track 7 : DudeLittle_44
- Track 8 : Jsquared_44
- Track 9 : Pioneer_46, ExplosioNervosa_46, Scherzo_46, Conquerage_46, Ugenie5_43, Phonnegut_46, Beemo_46
- Track 10 : Myxus_46
- Track 11 : Qobbit_46, Tubs_46, EmyBug_43, HortumSL17_46, Eidsmoe_46, PackMan_45, Phaeder_46, Aliter_46, Spouty_44, Fayely_46, Catalina_47, Priya_46
- Track 12 : Vanisoa_45
- Track 13 : Darrell_46
- Track 14 : Keziacharles14_45
- Track 15 : Arissanae_45
- Track 16 : Rahalelujah_45
- Track 17 : Elephantoon_45

Summary of Final Annotations (See graph section above for start numbers):

The start number called the most often in the published annotations is 2, it was called in 31 of the 31 non-draft genes in the pham.

Genes that call this "Most Annotated" start:

- Aliter_46, Arissanae_45, Beemo_46, Caraxes_46, Catalina_47, Chargerpower_45, Conquerage_46, Darrell_46, DudeLittle_44, Eidsmoe_46, Elephantoon_45, EmyBug_43, ExplosioNervosa_46, Fayely_46, HortumSL17_46, Jsquared_44, Keziacharles14_45, L5_45, Myxus_46, Odin_45, PackMan_45, Phaeder_46, Phonnegut_46, Pioneer_46, Priya_46, Qobbit_46, QueenB2_45, Rahalelujah_45, Scherzo_46, Spouty_44, Superchunk_45, Tubs_46, Ugenie5_43, Vanisoa_45, XianYue_45,

Genes that have the "Most Annotated" start but do not call it:

-

Genes that do not have the "Most Annotated" start:

-

Summary by start number:

Start 2:

- Found in 35 of 35 (100.0%) of genes in pham
- Manual Annotations of this start: 31 of 31
- Called 100.0% of time when present
- Phage (with cluster) where this start called: Aliter_46 (A9), Arissanae_45 (A9), Beemo_46 (A9), Caraxes_46 (A2), Catalina_47 (A9), Chargerpower_45 (A), Conquerage_46 (A9), Darrell_46 (A9), DudeLittle_44 (A2), Eidsmoe_46 (A9), Elephantoon_45 (A9), EmyBug_43 (A9), ExplosioNervosa_46 (A9), Fayely_46 (A9), HortumSL17_46 (A9), Jsquared_44 (A2), Keziacharles14_45 (A9), L5_45 (A2), Myxus_46 (A9), Odin_45 (A2), PackMan_45 (A9), Phaeder_46 (A9), Phonnegut_46 (A9), Pioneer_46 (A9), Priya_46 (A9), Qobbit_46 (A9), QueenB2_45 (A2), Rahalelujah_45 (A9), Scherzo_46 (A9), Spouty_44 (A9), Superchunk_45 (A2), Tubs_46 (A9), Ugenie5_43 (A9), Vanisoa_45 (A9), XianYue_45 (A2),

Summary by clusters:

There are 3 clusters represented in this pham: A9, A, A2,

Info for manual annotations of cluster A:

- Start number 2 was manually annotated 1 time for cluster A.

Info for manual annotations of cluster A2:

- Start number 2 was manually annotated 7 times for cluster A2.

Info for manual annotations of cluster A9:

- Start number 2 was manually annotated 23 times for cluster A9.

Gene Information:

Gene: Aliter_46 Start: 31711, Stop: 31415, Start Num: 2

Candidate Starts for Aliter_46:

(Start: 2 @31711 has 31 MA's), (13, 31531), (17, 31483), (18, 31462),

Gene: Arissanae_45 Start: 32350, Stop: 32045, Start Num: 2

Candidate Starts for Arissanae_45:

(Start: 2 @32350 has 31 MA's), (10, 32206), (18, 32101), (22, 32062),

Gene: Beemo_46 Start: 31833, Stop: 31543, Start Num: 2

Candidate Starts for Beemo_46:

(Start: 2 @31833 has 31 MA's), (11, 31668), (12, 31662), (13, 31659), (17, 31611), (18, 31590),

Gene: Caraxes_46 Start: 30316, Stop: 30020, Start Num: 2

Candidate Starts for Caraxes_46:

(1, 30508), (Start: 2 @30316 has 31 MA's), (16, 30106), (19, 30061), (23, 30028),

Gene: Catalina_47 Start: 31784, Stop: 31488, Start Num: 2

Candidate Starts for Catalina_47:

(Start: 2 @31784 has 31 MA's), (13, 31604), (17, 31556), (18, 31535),

Gene: Chargerpower_45 Start: 30704, Stop: 30411, Start Num: 2

Candidate Starts for Chargerpower_45:

(Start: 2 @30704 has 31 MA's), (7, 30611), (13, 30536), (14, 30494), (17, 30485), (21, 30425),

Gene: Conquerage_46 Start: 31807, Stop: 31517, Start Num: 2

Candidate Starts for Conquerage_46:

(Start: 2 @31807 has 31 MA's), (11, 31642), (12, 31636), (13, 31633), (17, 31585), (18, 31564),

Gene: Darrell_46 Start: 32153, Stop: 31854, Start Num: 2

Candidate Starts for Darrell_46:

(Start: 2 @32153 has 31 MA's), (15, 31928), (18, 31901),

Gene: DudeLittle_44 Start: 31643, Stop: 31353, Start Num: 2

Candidate Starts for DudeLittle_44:

(Start: 2 @31643 has 31 MA's), (11, 31484), (13, 31475),

Gene: Eidsmoe_46 Start: 31847, Stop: 31551, Start Num: 2

Candidate Starts for Eidsmoe_46:

(Start: 2 @31847 has 31 MA's), (13, 31667), (17, 31619), (18, 31598),

Gene: Elephantoon_45 Start: 31130, Stop: 30834, Start Num: 2

Candidate Starts for Elephantoon_45:

(Start: 2 @31130 has 31 MA's), (10, 30986), (18, 30881),

Gene: EmyBug_43 Start: 31849, Stop: 31553, Start Num: 2

Candidate Starts for EmyBug_43:

(Start: 2 @31849 has 31 MA's), (13, 31669), (17, 31621), (18, 31600),

Gene: ExplosioNervosa_46 Start: 31867, Stop: 31577, Start Num: 2

Candidate Starts for ExplosioNervosa_46:

(Start: 2 @31867 has 31 MA's), (11, 31702), (12, 31696), (13, 31693), (17, 31645), (18, 31624),

Gene: Fayely_46 Start: 31816, Stop: 31520, Start Num: 2

Candidate Starts for Fayely_46:

(Start: 2 @31816 has 31 MA's), (13, 31636), (17, 31588), (18, 31567),

Gene: HortumSL17_46 Start: 31783, Stop: 31487, Start Num: 2

Candidate Starts for HortumSL17_46:

(Start: 2 @31783 has 31 MA's), (13, 31603), (17, 31555), (18, 31534),

Gene: Jsquared_44 Start: 30618, Stop: 30322, Start Num: 2

Candidate Starts for Jsquared_44:

(Start: 2 @30618 has 31 MA's), (4, 30576), (5, 30564), (9, 30474), (17, 30384), (18, 30363),

Gene: Keziacharles14_45 Start: 32471, Stop: 32166, Start Num: 2

Candidate Starts for Keziacharles14_45:

(Start: 2 @32471 has 31 MA's), (7, 32366), (18, 32222), (20, 32198),

Gene: L5_45 Start: 30779, Stop: 30486, Start Num: 2
Candidate Starts for L5_45:
(Start: 2 @30779 has 31 MA's), (3, 30743), (4, 30737), (6, 30716), (9, 30638), (17, 30548), (18, 30527),

Gene: Myxus_46 Start: 31783, Stop: 31487, Start Num: 2
Candidate Starts for Myxus_46:
(Start: 2 @31783 has 31 MA's), (13, 31603), (17, 31555), (18, 31534),

Gene: Odin_45 Start: 30465, Stop: 30196, Start Num: 2
Candidate Starts for Odin_45:
(Start: 2 @30465 has 31 MA's), (8, 30372), (19, 30237), (23, 30204),

Gene: PackMan_45 Start: 31783, Stop: 31487, Start Num: 2
Candidate Starts for PackMan_45:
(Start: 2 @31783 has 31 MA's), (13, 31603), (17, 31555), (18, 31534),

Gene: Phaeder_46 Start: 31783, Stop: 31487, Start Num: 2
Candidate Starts for Phaeder_46:
(Start: 2 @31783 has 31 MA's), (13, 31603), (17, 31555), (18, 31534),

Gene: Phonnegut_46 Start: 31832, Stop: 31542, Start Num: 2
Candidate Starts for Phonnegut_46:
(Start: 2 @31832 has 31 MA's), (11, 31667), (12, 31661), (13, 31658), (17, 31610), (18, 31589),

Gene: Pioneer_46 Start: 31832, Stop: 31542, Start Num: 2
Candidate Starts for Pioneer_46:
(Start: 2 @31832 has 31 MA's), (11, 31667), (12, 31661), (13, 31658), (17, 31610), (18, 31589),

Gene: Priya_46 Start: 31850, Stop: 31554, Start Num: 2
Candidate Starts for Priya_46:
(Start: 2 @31850 has 31 MA's), (13, 31670), (17, 31622), (18, 31601),

Gene: Qobbit_46 Start: 31812, Stop: 31516, Start Num: 2
Candidate Starts for Qobbit_46:
(Start: 2 @31812 has 31 MA's), (13, 31632), (17, 31584), (18, 31563),

Gene: QueenB2_45 Start: 31688, Stop: 31398, Start Num: 2
Candidate Starts for QueenB2_45:
(Start: 2 @31688 has 31 MA's), (13, 31520),

Gene: Rahalelujah_45 Start: 31040, Stop: 30741, Start Num: 2
Candidate Starts for Rahalelujah_45:
(Start: 2 @31040 has 31 MA's), (10, 30896), (18, 30791), (22, 30752),

Gene: Scherzo_46 Start: 32021, Stop: 31731, Start Num: 2
Candidate Starts for Scherzo_46:
(Start: 2 @32021 has 31 MA's), (11, 31856), (12, 31850), (13, 31847), (17, 31799), (18, 31778),

Gene: Spouty_44 Start: 31849, Stop: 31553, Start Num: 2
Candidate Starts for Spouty_44:
(Start: 2 @31849 has 31 MA's), (13, 31669), (17, 31621), (18, 31600),

Gene: Superchunk_45 Start: 30316, Stop: 30020, Start Num: 2

Candidate Starts for Superchunk_45:

(1, 30508), (Start: 2 @30316 has 31 MA's), (16, 30106), (19, 30061), (23, 30028),

Gene: Tubs_46 Start: 31783, Stop: 31487, Start Num: 2

Candidate Starts for Tubs_46:

(Start: 2 @31783 has 31 MA's), (13, 31603), (17, 31555), (18, 31534),

Gene: Ugenie5_43 Start: 32020, Stop: 31730, Start Num: 2

Candidate Starts for Ugenie5_43:

(Start: 2 @32020 has 31 MA's), (11, 31855), (12, 31849), (13, 31846), (17, 31798), (18, 31777),

Gene: Vanisoa_45 Start: 32358, Stop: 32059, Start Num: 2

Candidate Starts for Vanisoa_45:

(Start: 2 @32358 has 31 MA's), (13, 32178), (18, 32109), (21, 32070),

Gene: XianYue_45 Start: 31548, Stop: 31267, Start Num: 2

Candidate Starts for XianYue_45:

(Start: 2 @31548 has 31 MA's), (11, 31389), (13, 31380), (17, 31332),