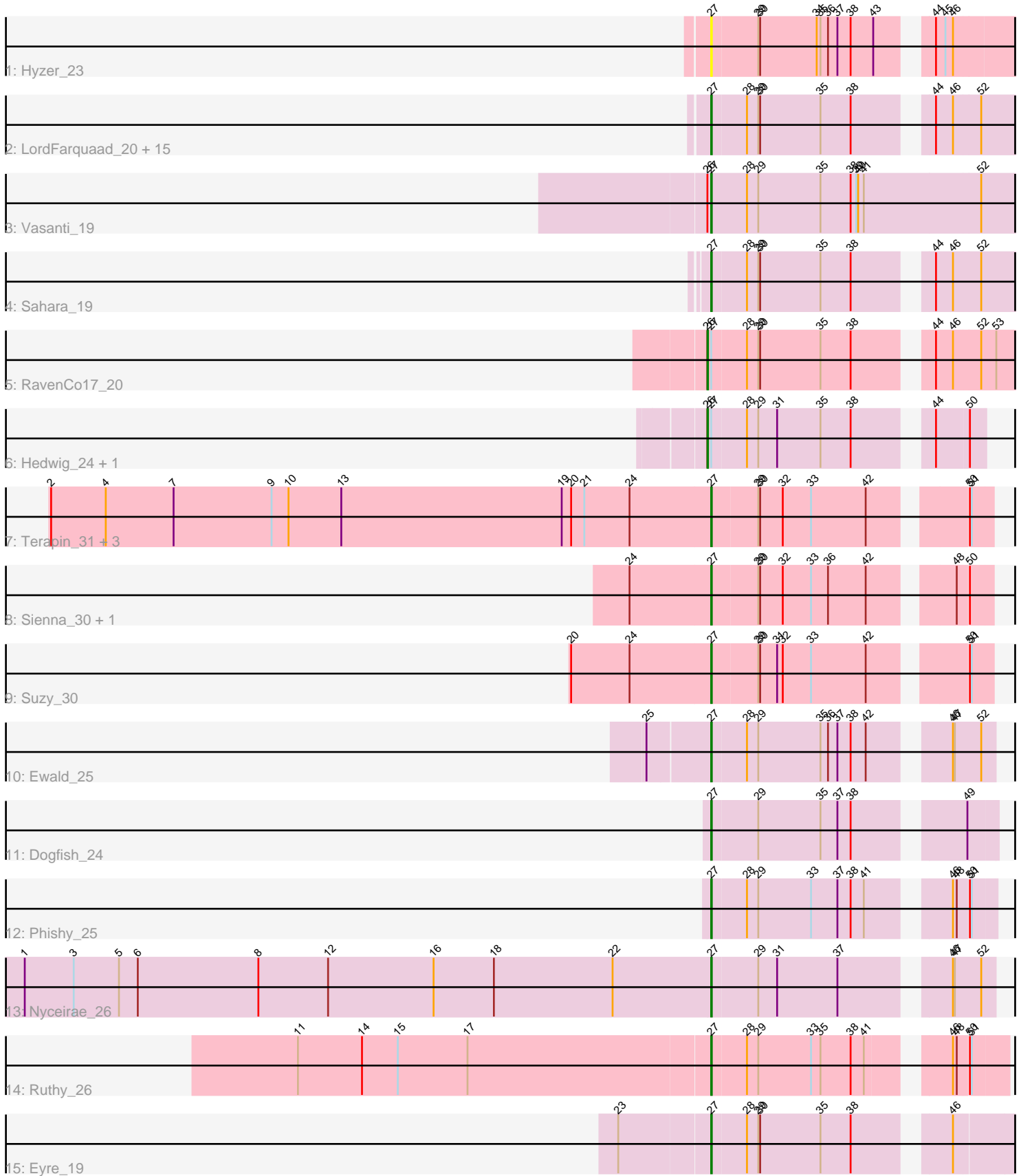


Pham 158047



Note: Tracks are now grouped by subcluster and scaled. Switching in subcluster is indicated by changes in track color. Track scale is now set by default to display the region 30 bp upstream of start 1 to 30 bp downstream of the last possible start. If this default region is judged to be packed too tightly with annotated starts, the track will be further scaled to only show that region of the ORF with annotated starts. This action will be indicated by adding "Zoomed" to the title. For starts, yellow indicates the location of called starts comprised solely of Glimmer/GeneMark auto-annotations, green indicates the location of called starts with at least 1 manual gene annotation.

Pham 158047 Report

This analysis was run 04/13/24 on database version 558.

Pham number 158047 has 35 members, 1 are drafts.

Phages represented in each track:

- Track 1 : Hyzer_23
- Track 2 : LordFarquaad_20, Ebert_20, Gizermo_20, Sproutie_20, Attis_20, Bjanes7_20, Mocha12_20, Clap_20, Savage_20, SoilAssassin_20, Whiteclaw_20, Haley23_20, GemG_20, Yeet412_20, Cynthia_20, TuertoX_20
- Track 3 : Vasanti_19
- Track 4 : Sahara_19
- Track 5 : RavenCo17_20
- Track 6 : Hedwig_24, DirtyBoi_24
- Track 7 : Terapin_31, Djokovic_30, BiteSize_30, Beyoncage_30
- Track 8 : Sienna_30, Madi_30
- Track 9 : Suzy_30
- Track 10 : Ewald_25
- Track 11 : Dogfish_24
- Track 12 : Phishy_25
- Track 13 : Nyceirae_26
- Track 14 : Ruthy_26
- Track 15 : Eyre_19

Summary of Final Annotations (See graph section above for start numbers):

The start number called the most often in the published annotations is 27, it was called in 31 of the 34 non-draft genes in the pham.

Genes that call this "Most Annotated" start:

- Attis_20, Beyoncage_30, BiteSize_30, Bjanes7_20, Clap_20, Cynthia_20, Djokovic_30, Dogfish_24, Ebert_20, Ewald_25, Eyre_19, GemG_20, Gizermo_20, Haley23_20, Hyzer_23, LordFarquaad_20, Madi_30, Mocha12_20, Nyceirae_26, Phishy_25, Ruthy_26, Sahara_19, Savage_20, Sienna_30, SoilAssassin_20, Sproutie_20, Suzy_30, Terapin_31, TuertoX_20, Vasanti_19, Whiteclaw_20, Yeet412_20,

Genes that have the "Most Annotated" start but do not call it:

- DirtyBoi_24, Hedwig_24, RavenCo17_20,

Genes that do not have the "Most Annotated" start:

-

Summary by start number:

Start 26:

- Found in 4 of 35 (11.4%) of genes in pham
- Manual Annotations of this start: 3 of 34
- Called 75.0% of time when present
- Phage (with cluster) where this start called: DirtyBoi_24 (DB), Hedwig_24 (DB), RavenCo17_20 (CZ8),

Start 27:

- Found in 35 of 35 (100.0%) of genes in pham
- Manual Annotations of this start: 31 of 34
- Called 91.4% of time when present
- Phage (with cluster) where this start called: Attis_20 (CZ2), Beyoncage_30 (DG1), BiteSize_30 (DG1), Bjanes7_20 (CZ2), Clap_20 (CZ2), Cynthia_20 (CZ2), Djokovic_30 (DG1), Dogfish_24 (DT), Ebert_20 (CZ2), Ewald_25 (DT), Eyre_19 (singleton), GemG_20 (CZ2), Gizermo_20 (CZ2), Haley23_20 (CZ2), Hyzer_23 (CZ1), LordFarquaad_20 (CZ2), Madi_30 (DG1), Mocha12_20 (CZ2), Nyceirae_26 (DT), Phishy_25 (DT), Ruthy_26 (DW), Sahara_19 (CZ2), Savage_20 (CZ2), Sienna_30 (DG1), SoilAssassin_20 (CZ2), Sproutie_20 (CZ2), Suzy_30 (DG1), Terapin_31 (DG1), TuertoX_20 (CZ2), Vasanti_19 (CZ2), Whiteclaw_20 (CZ2), Yeet412_20 (CZ2),

Summary by clusters:

There are 8 clusters represented in this pham: singleton, CZ2, CZ1, DB, CZ8, DG1, DW, DT,

Info for manual annotations of cluster CZ2:

- Start number 27 was manually annotated 18 times for cluster CZ2.

Info for manual annotations of cluster CZ8:

- Start number 26 was manually annotated 1 time for cluster CZ8.

Info for manual annotations of cluster DB:

- Start number 26 was manually annotated 2 times for cluster DB.

Info for manual annotations of cluster DG1:

- Start number 27 was manually annotated 7 times for cluster DG1.

Info for manual annotations of cluster DT:

- Start number 27 was manually annotated 4 times for cluster DT.

Info for manual annotations of cluster DW:

- Start number 27 was manually annotated 1 time for cluster DW.

Gene Information:

Gene: Attis_20 Start: 18033, Stop: 18548, Start Num: 27

Candidate Starts for Attis_20:

(Start: 27 @18033 has 31 MA's), (28, 18087), (29, 18105), (30, 18108), (35, 18204), (38, 18252), (44, 18351), (46, 18378), (52, 18420),

Gene: Beyoncage_30 Start: 27124, Stop: 27528, Start Num: 27

Candidate Starts for Beyoncage_30:

(2, 26074), (4, 26161), (7, 26269), (9, 26425), (10, 26452), (13, 26536), (19, 26887), (20, 26902), (21, 26923), (24, 26995), (Start: 27 @27124 has 31 MA's), (29, 27196), (30, 27199), (32, 27235), (33, 27280), (42, 27367), (50, 27493), (51, 27496),

Gene: BiteSize_30 Start: 27124, Stop: 27528, Start Num: 27

Candidate Starts for BiteSize_30:

(2, 26074), (4, 26161), (7, 26269), (9, 26425), (10, 26452), (13, 26536), (19, 26887), (20, 26902), (21, 26923), (24, 26995), (Start: 27 @27124 has 31 MA's), (29, 27196), (30, 27199), (32, 27235), (33, 27280), (42, 27367), (50, 27493), (51, 27496),

Gene: Bjaner7_20 Start: 18033, Stop: 18548, Start Num: 27

Candidate Starts for Bjaner7_20:

(Start: 27 @18033 has 31 MA's), (28, 18087), (29, 18105), (30, 18108), (35, 18204), (38, 18252), (44, 18351), (46, 18378), (52, 18420),

Gene: Clap_20 Start: 18040, Stop: 18555, Start Num: 27

Candidate Starts for Clap_20:

(Start: 27 @18040 has 31 MA's), (28, 18094), (29, 18112), (30, 18115), (35, 18211), (38, 18259), (44, 18358), (46, 18385), (52, 18427),

Gene: Cynthia_20 Start: 18040, Stop: 18555, Start Num: 27

Candidate Starts for Cynthia_20:

(Start: 27 @18040 has 31 MA's), (28, 18094), (29, 18112), (30, 18115), (35, 18211), (38, 18259), (44, 18358), (46, 18385), (52, 18427),

Gene: DirtyBoi_24 Start: 20800, Stop: 21198, Start Num: 26

Candidate Starts for DirtyBoi_24:

(Start: 26 @20800 has 3 MA's), (Start: 27 @20806 has 31 MA's), (28, 20860), (29, 20878), (31, 20908), (35, 20977), (38, 21025), (44, 21124), (50, 21175),

Gene: Djokovic_30 Start: 27123, Stop: 27527, Start Num: 27

Candidate Starts for Djokovic_30:

(2, 26073), (4, 26160), (7, 26268), (9, 26424), (10, 26451), (13, 26535), (19, 26886), (20, 26901), (21, 26922), (24, 26994), (Start: 27 @27123 has 31 MA's), (29, 27195), (30, 27198), (32, 27234), (33, 27279), (42, 27366), (50, 27492), (51, 27495),

Gene: Dogfish_24 Start: 21281, Stop: 21691, Start Num: 27

Candidate Starts for Dogfish_24:

(Start: 27 @21281 has 31 MA's), (29, 21353), (35, 21452), (37, 21479), (38, 21500), (49, 21647),

Gene: Ebert_20 Start: 18040, Stop: 18555, Start Num: 27

Candidate Starts for Ebert_20:

(Start: 27 @18040 has 31 MA's), (28, 18094), (29, 18112), (30, 18115), (35, 18211), (38, 18259), (44, 18358), (46, 18385), (52, 18427),

Gene: Ewald_25 Start: 21640, Stop: 22050, Start Num: 27

Candidate Starts for Ewald_25:

(25, 21550), (Start: 27 @21640 has 31 MA's), (28, 21694), (29, 21712), (35, 21811), (36, 21823), (37, 21838), (38, 21859), (42, 21883), (46, 21985), (47, 21988), (52, 22030),

Gene: Eyre_19 Start: 18287, Stop: 18730, Start Num: 27

Candidate Starts for Eyre_19:

(23, 18146), (Start: 27 @18287 has 31 MA's), (28, 18341), (29, 18359), (30, 18362), (35, 18458), (38, 18506), (46, 18632),

Gene: GemG_20 Start: 18040, Stop: 18555, Start Num: 27

Candidate Starts for GemG_20:

(Start: 27 @18040 has 31 MA's), (28, 18094), (29, 18112), (30, 18115), (35, 18211), (38, 18259), (44, 18358), (46, 18385), (52, 18427),

Gene: Gizermo_20 Start: 18040, Stop: 18555, Start Num: 27

Candidate Starts for Gizermo_20:

(Start: 27 @18040 has 31 MA's), (28, 18094), (29, 18112), (30, 18115), (35, 18211), (38, 18259), (44, 18358), (46, 18385), (52, 18427),

Gene: Haley23_20 Start: 18040, Stop: 18555, Start Num: 27

Candidate Starts for Haley23_20:

(Start: 27 @18040 has 31 MA's), (28, 18094), (29, 18112), (30, 18115), (35, 18211), (38, 18259), (44, 18358), (46, 18385), (52, 18427),

Gene: Hedwig_24 Start: 20796, Stop: 21194, Start Num: 26

Candidate Starts for Hedwig_24:

(Start: 26 @20796 has 3 MA's), (Start: 27 @20802 has 31 MA's), (28, 20856), (29, 20874), (31, 20904), (35, 20973), (38, 21021), (44, 21120), (50, 21171),

Gene: Hyzer_23 Start: 21496, Stop: 22044, Start Num: 27

Candidate Starts for Hyzer_23:

(Start: 27 @21496 has 31 MA's), (29, 21568), (30, 21571), (34, 21661), (35, 21667), (36, 21679), (37, 21694), (38, 21715), (43, 21751), (44, 21814), (45, 21829), (46, 21841),

Gene: LordFarquaad_20 Start: 18033, Stop: 18548, Start Num: 27

Candidate Starts for LordFarquaad_20:

(Start: 27 @18033 has 31 MA's), (28, 18087), (29, 18105), (30, 18108), (35, 18204), (38, 18252), (44, 18351), (46, 18378), (52, 18420),

Gene: Madi_30 Start: 27124, Stop: 27528, Start Num: 27

Candidate Starts for Madi_30:

(24, 26995), (Start: 27 @27124 has 31 MA's), (29, 27196), (30, 27199), (32, 27235), (33, 27280), (36, 27307), (42, 27367), (48, 27478), (50, 27493),

Gene: Mocha12_20 Start: 18040, Stop: 18555, Start Num: 27

Candidate Starts for Mocha12_20:

(Start: 27 @18040 has 31 MA's), (28, 18094), (29, 18112), (30, 18115), (35, 18211), (38, 18259), (44, 18358), (46, 18385), (52, 18427),

Gene: Nyceirae_26 Start: 21873, Stop: 22283, Start Num: 27

Candidate Starts for Nyceirae_26:

(1, 20781), (3, 20859), (5, 20931), (6, 20961), (8, 21153), (12, 21264), (16, 21432), (18, 21528), (22, 21717), (Start: 27 @21873 has 31 MA's), (29, 21945), (31, 21975), (37, 22071), (46, 22218), (47,

22221), (52, 22263),

Gene: Phishy_25 Start: 21878, Stop: 22282, Start Num: 27

Candidate Starts for Phishy_25:

(Start: 27 @21878 has 31 MA's), (28, 21932), (29, 21950), (33, 22034), (37, 22076), (38, 22097), (41, 22118), (46, 22223), (48, 22229), (50, 22244), (51, 22247),

Gene: RavenCo17_20 Start: 18926, Stop: 19447, Start Num: 26

Candidate Starts for RavenCo17_20:

(Start: 26 @18926 has 3 MA's), (Start: 27 @18932 has 31 MA's), (28, 18986), (29, 19004), (30, 19007), (35, 19103), (38, 19151), (44, 19250), (46, 19277), (52, 19319), (53, 19343),

Gene: Ruthy_26 Start: 23308, Stop: 23727, Start Num: 27

Candidate Starts for Ruthy_26:

(11, 22657), (14, 22759), (15, 22816), (17, 22927), (Start: 27 @23308 has 31 MA's), (28, 23362), (29, 23380), (33, 23464), (35, 23479), (38, 23527), (41, 23545), (46, 23647), (48, 23653), (50, 23668), (51, 23671),

Gene: Sahara_19 Start: 17712, Stop: 18227, Start Num: 27

Candidate Starts for Sahara_19:

(Start: 27 @17712 has 31 MA's), (28, 17766), (29, 17784), (30, 17787), (35, 17883), (38, 17931), (44, 18030), (46, 18057), (52, 18099),

Gene: Savage_20 Start: 18040, Stop: 18555, Start Num: 27

Candidate Starts for Savage_20:

(Start: 27 @18040 has 31 MA's), (28, 18094), (29, 18112), (30, 18115), (35, 18211), (38, 18259), (44, 18358), (46, 18385), (52, 18427),

Gene: Sienna_30 Start: 27124, Stop: 27528, Start Num: 27

Candidate Starts for Sienna_30:

(24, 26995), (Start: 27 @27124 has 31 MA's), (29, 27196), (30, 27199), (32, 27235), (33, 27280), (36, 27307), (42, 27367), (48, 27478), (50, 27493),

Gene: SoilAssassin_20 Start: 18033, Stop: 18548, Start Num: 27

Candidate Starts for SoilAssassin_20:

(Start: 27 @18033 has 31 MA's), (28, 18087), (29, 18105), (30, 18108), (35, 18204), (38, 18252), (44, 18351), (46, 18378), (52, 18420),

Gene: Sproutie_20 Start: 18040, Stop: 18555, Start Num: 27

Candidate Starts for Sproutie_20:

(Start: 27 @18040 has 31 MA's), (28, 18094), (29, 18112), (30, 18115), (35, 18211), (38, 18259), (44, 18358), (46, 18385), (52, 18427),

Gene: Suzy_30 Start: 28265, Stop: 28669, Start Num: 27

Candidate Starts for Suzy_30:

(20, 28043), (24, 28136), (Start: 27 @28265 has 31 MA's), (29, 28337), (30, 28340), (31, 28367), (32, 28376), (33, 28421), (42, 28508), (50, 28634), (51, 28637),

Gene: Terapin_31 Start: 27125, Stop: 27529, Start Num: 27

Candidate Starts for Terapin_31:

(2, 26075), (4, 26162), (7, 26270), (9, 26426), (10, 26453), (13, 26537), (19, 26888), (20, 26903), (21, 26924), (24, 26996), (Start: 27 @27125 has 31 MA's), (29, 27197), (30, 27200), (32, 27236), (33, 27281), (42, 27368), (50, 27494), (51, 27497),

Gene: TuertoX_20 Start: 18040, Stop: 18555, Start Num: 27

Candidate Starts for TuertoX_20:

(Start: 27 @18040 has 31 MA's), (28, 18094), (29, 18112), (30, 18115), (35, 18211), (38, 18259), (44, 18358), (46, 18385), (52, 18427),

Gene: Vasanti_19 Start: 17555, Stop: 18109, Start Num: 27

Candidate Starts for Vasanti_19:

(Start: 26 @17549 has 3 MA's), (Start: 27 @17555 has 31 MA's), (28, 17612), (29, 17630), (35, 17729), (38, 17777), (39, 17786), (40, 17789), (41, 17798), (52, 17981),

Gene: Whiteclaw_20 Start: 18040, Stop: 18555, Start Num: 27

Candidate Starts for Whiteclaw_20:

(Start: 27 @18040 has 31 MA's), (28, 18094), (29, 18112), (30, 18115), (35, 18211), (38, 18259), (44, 18358), (46, 18385), (52, 18427),

Gene: Yeet412_20 Start: 18033, Stop: 18548, Start Num: 27

Candidate Starts for Yeet412_20:

(Start: 27 @18033 has 31 MA's), (28, 18087), (29, 18105), (30, 18108), (35, 18204), (38, 18252), (44, 18351), (46, 18378), (52, 18420),