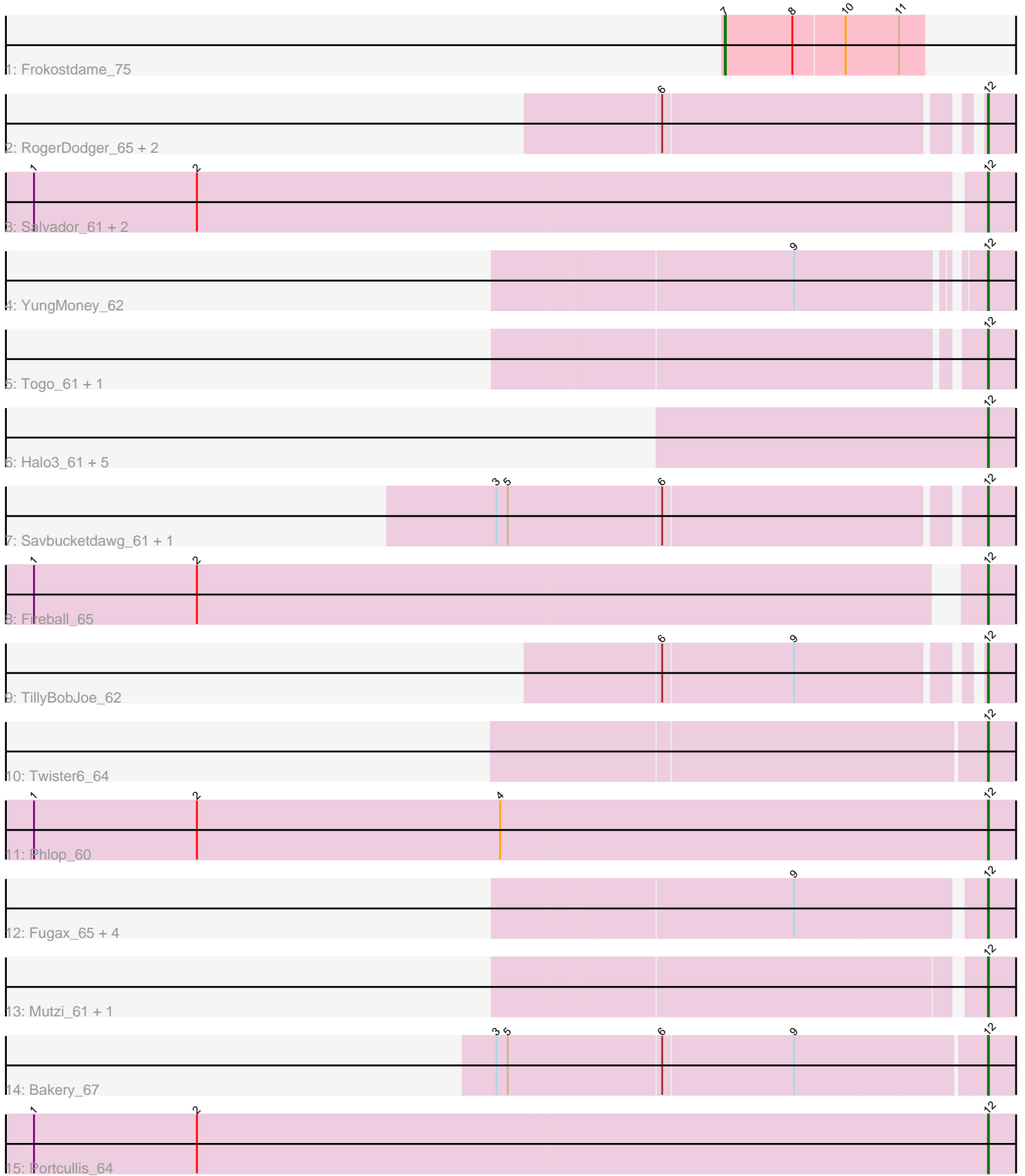


Pham 158067



Note: Tracks are now grouped by subcluster and scaled. Switching in subcluster is indicated by changes in track color. Track scale is now set by default to display the region 30 bp upstream of start 1 to 30 bp downstream of the last possible start. If this default region is judged to be packed too tightly with annotated starts, the track will be further scaled to only show that region of the ORF with annotated starts. This action will be indicated by adding "Zoomed" to the title. For starts, yellow indicates the location of called starts comprised solely of Glimmer/GeneMark auto-annotations, green indicates the location of called starts with at least 1 manual gene annotation.

## Pham 158067 Report

This analysis was run 04/13/24 on database version 558.

Pham number 158067 has 31 members, 2 are drafts.

Phages represented in each track:

- Track 1 : Frokostdame\_75
- Track 2 : RogerDodger\_65, PullumCavea\_61, Danyall\_63
- Track 3 : Salvador\_61, Evamon\_61, Nubi\_62
- Track 4 : YungMoney\_62
- Track 5 : Togo\_61, SmokingBunny\_62
- Track 6 : Halo3\_61, Gezellig\_63, Arri\_63, Wizard\_60, VanDeWege\_64, Valary\_63
- Track 7 : Savbucketdawg\_61, Jambalaya\_61
- Track 8 : Fireball\_65
- Track 9 : TillyBobJoe\_62
- Track 10 : Twister6\_64
- Track 11 : Phlop\_60
- Track 12 : Fugax\_65, Barb\_64, PinkCoffee\_64, ClamChowder\_64, KimmyK\_63
- Track 13 : Mutzi\_61, Shinji\_61
- Track 14 : Bakery\_67
- Track 15 : Portcullis\_64

### ***Summary of Final Annotations (See graph section above for start numbers):***

The start number called the most often in the published annotations is 12, it was called in 28 of the 29 non-draft genes in the pham.

Genes that call this "Most Annotated" start:

- Arri\_63, Bakery\_67, Barb\_64, ClamChowder\_64, Danyall\_63, Evamon\_61, Fireball\_65, Fugax\_65, Gezellig\_63, Halo3\_61, Jambalaya\_61, KimmyK\_63, Mutzi\_61, Nubi\_62, Phlop\_60, PinkCoffee\_64, Portcullis\_64, PullumCavea\_61, RogerDodger\_65, Salvador\_61, Savbucketdawg\_61, Shinji\_61, SmokingBunny\_62, TillyBobJoe\_62, Togo\_61, Twister6\_64, Valary\_63, VanDeWege\_64, Wizard\_60, YungMoney\_62,

Genes that have the "Most Annotated" start but do not call it:

- 

Genes that do not have the "Most Annotated" start:

- Frokostdame\_75,

## Summary by start number:

### Start 7:

- Found in 1 of 31 ( 3.2% ) of genes in pham
- Manual Annotations of this start: 1 of 29
- Called 100.0% of time when present
- Phage (with cluster) where this start called: Frokostdame\_75 (CV),

### Start 12:

- Found in 30 of 31 ( 96.8% ) of genes in pham
- Manual Annotations of this start: 28 of 29
- Called 100.0% of time when present
- Phage (with cluster) where this start called: Arri\_63 (DC1), Bakery\_67 (DC1), Barb\_64 (DC1), ClamChowder\_64 (DC1), Danyall\_63 (DC1), Evamon\_61 (DC1), Fireball\_65 (DC1), Fugax\_65 (DC1), Gezellig\_63 (DC1), Halo3\_61 (DC1), Jambalaya\_61 (DC1), KimmyK\_63 (DC1), Mutzi\_61 (DC1), Nubi\_62 (DC1), Phlop\_60 (DC1), PinkCoffee\_64 (DC1), Portcullis\_64 (DC1), PullumCavea\_61 (DC1), RogerDodger\_65 (DC1), Salvador\_61 (DC1), Savbucketdawg\_61 (DC1), Shinji\_61 (DC1), SmokingBunny\_62 (DC1), TillyBobJoe\_62 (DC1), Togo\_61 (DC1), Twister6\_64 (DC1), Valary\_63 (DC1), VanDeWege\_64 (DC1), Wizard\_60 (DC1), YungMoney\_62 (DC1),

## Summary by clusters:

There are 2 clusters represented in this pham: CV, DC1,

Info for manual annotations of cluster CV:

- Start number 7 was manually annotated 1 time for cluster CV.

Info for manual annotations of cluster DC1:

- Start number 12 was manually annotated 28 times for cluster DC1.

## Gene Information:

Gene: Arri\_63 Start: 46905, Stop: 47132, Start Num: 12

Candidate Starts for Arri\_63:

(Start: 12 @46905 has 28 MA's),

Gene: Bakery\_67 Start: 49144, Stop: 49371, Start Num: 12

Candidate Starts for Bakery\_67:

(3, 48634), (5, 48646), (6, 48808), (9, 48946), (Start: 12 @49144 has 28 MA's),

Gene: Barb\_64 Start: 46782, Stop: 47009, Start Num: 12

Candidate Starts for Barb\_64:

(9, 46593), (Start: 12 @46782 has 28 MA's),

Gene: ClamChowder\_64 Start: 46782, Stop: 47009, Start Num: 12

Candidate Starts for ClamChowder\_64:

(9, 46593), (Start: 12 @46782 has 28 MA's),

Gene: Danyall\_63 Start: 46877, Stop: 47095, Start Num: 12  
Candidate Starts for Danyall\_63:  
(6, 46568), (Start: 12 @46877 has 28 MA's),

Gene: Evamon\_61 Start: 46320, Stop: 46547, Start Num: 12  
Candidate Starts for Evamon\_61:  
(1, 45324), (2, 45498), (Start: 12 @46320 has 28 MA's),

Gene: Fireball\_65 Start: 47177, Stop: 47395, Start Num: 12  
Candidate Starts for Fireball\_65:  
(1, 46199), (2, 46373), (Start: 12 @47177 has 28 MA's),

Gene: Frokostdame\_75 Start: 47547, Stop: 47756, Start Num: 7  
Candidate Starts for Frokostdame\_75:  
(Start: 7 @47547 has 1 MA's), (8, 47619), (10, 47673), (11, 47730),

Gene: Fugax\_65 Start: 46774, Stop: 47001, Start Num: 12  
Candidate Starts for Fugax\_65:  
(9, 46585), (Start: 12 @46774 has 28 MA's),

Gene: Gezellig\_63 Start: 46773, Stop: 46991, Start Num: 12  
Candidate Starts for Gezellig\_63:  
(Start: 12 @46773 has 28 MA's),

Gene: Halo3\_61 Start: 47358, Stop: 47576, Start Num: 12  
Candidate Starts for Halo3\_61:  
(Start: 12 @47358 has 28 MA's),

Gene: Jambalaya\_61 Start: 46624, Stop: 46842, Start Num: 12  
Candidate Starts for Jambalaya\_61:  
(3, 46129), (5, 46141), (6, 46303), (Start: 12 @46624 has 28 MA's),

Gene: KimmyK\_63 Start: 47216, Stop: 47443, Start Num: 12  
Candidate Starts for KimmyK\_63:  
(9, 47027), (Start: 12 @47216 has 28 MA's),

Gene: Mutzi\_61 Start: 48055, Stop: 48282, Start Num: 12  
Candidate Starts for Mutzi\_61:  
(Start: 12 @48055 has 28 MA's),

Gene: Nubi\_62 Start: 46425, Stop: 46652, Start Num: 12  
Candidate Starts for Nubi\_62:  
(1, 45429), (2, 45603), (Start: 12 @46425 has 28 MA's),

Gene: Phlop\_60 Start: 46782, Stop: 47009, Start Num: 12  
Candidate Starts for Phlop\_60:  
(1, 45771), (2, 45945), (4, 46269), (Start: 12 @46782 has 28 MA's),

Gene: PinkCoffee\_64 Start: 46788, Stop: 47015, Start Num: 12  
Candidate Starts for PinkCoffee\_64:  
(9, 46599), (Start: 12 @46788 has 28 MA's),

Gene: Portcullis\_64 Start: 46910, Stop: 47128, Start Num: 12

Candidate Starts for Portcullis\_64:  
(1, 45899), (2, 46073), (Start: 12 @46910 has 28 MA's),

Gene: PullumCavea\_61 Start: 46958, Stop: 47176, Start Num: 12  
Candidate Starts for PullumCavea\_61:  
(6, 46649), (Start: 12 @46958 has 28 MA's),

Gene: RogerDodger\_65 Start: 47080, Stop: 47298, Start Num: 12  
Candidate Starts for RogerDodger\_65:  
(6, 46771), (Start: 12 @47080 has 28 MA's),

Gene: Salvador\_61 Start: 46318, Stop: 46545, Start Num: 12  
Candidate Starts for Salvador\_61:  
(1, 45322), (2, 45496), (Start: 12 @46318 has 28 MA's),

Gene: Savbucketdawg\_61 Start: 46624, Stop: 46842, Start Num: 12  
Candidate Starts for Savbucketdawg\_61:  
(3, 46129), (5, 46141), (6, 46303), (Start: 12 @46624 has 28 MA's),

Gene: Shinji\_61 Start: 46489, Stop: 46716, Start Num: 12  
Candidate Starts for Shinji\_61:  
(Start: 12 @46489 has 28 MA's),

Gene: SmokingBunny\_62 Start: 46918, Stop: 47136, Start Num: 12  
Candidate Starts for SmokingBunny\_62:  
(Start: 12 @46918 has 28 MA's),

Gene: TillyBobJoe\_62 Start: 46777, Stop: 46995, Start Num: 12  
Candidate Starts for TillyBobJoe\_62:  
(6, 46468), (9, 46606), (Start: 12 @46777 has 28 MA's),

Gene: Togo\_61 Start: 46918, Stop: 47136, Start Num: 12  
Candidate Starts for Togo\_61:  
(Start: 12 @46918 has 28 MA's),

Gene: Twister6\_64 Start: 46678, Stop: 46896, Start Num: 12  
Candidate Starts for Twister6\_64:  
(Start: 12 @46678 has 28 MA's),

Gene: Valary\_63 Start: 47527, Stop: 47745, Start Num: 12  
Candidate Starts for Valary\_63:  
(Start: 12 @47527 has 28 MA's),

Gene: VanDeWege\_64 Start: 46867, Stop: 47085, Start Num: 12  
Candidate Starts for VanDeWege\_64:  
(Start: 12 @46867 has 28 MA's),

Gene: Wizard\_60 Start: 46773, Stop: 46991, Start Num: 12  
Candidate Starts for Wizard\_60:  
(Start: 12 @46773 has 28 MA's),

Gene: YungMoney\_62 Start: 48904, Stop: 49113, Start Num: 12  
Candidate Starts for YungMoney\_62:

(9, 48727), (Start: 12 @48904 has 28 MA's),