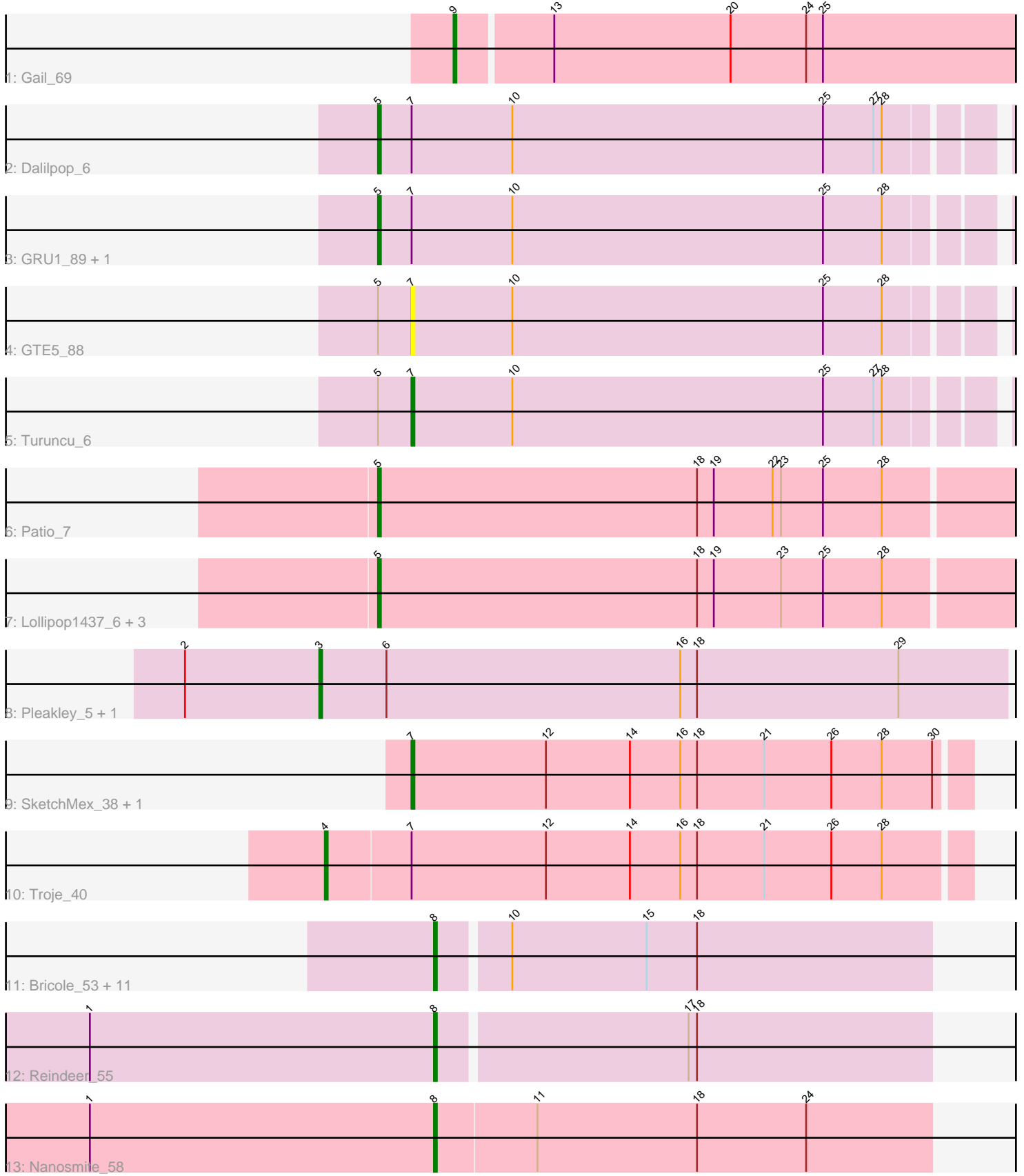


Pham 158079



Note: Tracks are now grouped by subcluster and scaled. Switching in subcluster is indicated by changes in track color. Track scale is now set by default to display the region 30 bp upstream of start 1 to 30 bp downstream of the last possible start. If this default region is judged to be packed too tightly with annotated starts, the track will be further scaled to only show that region of the ORF with annotated starts. This action will be indicated by adding "Zoomed" to the title. For starts, yellow indicates the location of called starts comprised solely of Glimmer/GeneMark auto-annotations, green indicates the location of called starts with at least 1 manual gene annotation.

## Pham 158079 Report

This analysis was run 04/13/24 on database version 558.

Pham number 158079 has 30 members, 2 are drafts.

Phages represented in each track:

- Track 1 : Gail\_69
- Track 2 : Dalilpop\_6
- Track 3 : GRU1\_89, Flapper\_6
- Track 4 : GTE5\_88
- Track 5 : Turuncu\_6
- Track 6 : Patio\_7
- Track 7 : Lollipop1437\_6, Float294\_6, Ennea\_6, Skysand\_6
- Track 8 : Pleakley\_5, Fury\_5
- Track 9 : SketchMex\_38, Biskit\_40
- Track 10 : Troje\_40
- Track 11 : Bricole\_53, Dulcita\_54, Glaske16\_54, LilhomieP\_52, Bongo\_53, Diminimus\_54, IPhane7\_53, Skinny\_54, SlimJimmy\_52, PegLeg\_53, Auspice\_53, TyDawg\_53
- Track 12 : Reindeer\_55
- Track 13 : Nanosmite\_58

### ***Summary of Final Annotations (See graph section above for start numbers):***

The start number called the most often in the published annotations is 8, it was called in 14 of the 28 non-draft genes in the pham.

Genes that call this "Most Annotated" start:

- Auspice\_53, Bongo\_53, Bricole\_53, Diminimus\_54, Dulcita\_54, Glaske16\_54, IPhane7\_53, LilhomieP\_52, Nanosmite\_58, PegLeg\_53, Reindeer\_55, Skinny\_54, SlimJimmy\_52, TyDawg\_53,

Genes that have the "Most Annotated" start but do not call it:

- 

Genes that do not have the "Most Annotated" start:

- Biskit\_40, Dalilpop\_6, Ennea\_6, Flapper\_6, Float294\_6, Fury\_5, GRU1\_89, GTE5\_88, Gail\_69, Lollipop1437\_6, Patio\_7, Pleakley\_5, SketchMex\_38, Skysand\_6, Troje\_40, Turuncu\_6,

## Summary by start number:

### Start 3:

- Found in 2 of 30 ( 6.7% ) of genes in pham
- Manual Annotations of this start: 2 of 28
- Called 100.0% of time when present
- Phage (with cluster) where this start called: Fury\_5 (CR5), Pleakley\_5 (CR5),

### Start 4:

- Found in 1 of 30 ( 3.3% ) of genes in pham
- Manual Annotations of this start: 1 of 28
- Called 100.0% of time when present
- Phage (with cluster) where this start called: Troje\_40 (CT),

### Start 5:

- Found in 10 of 30 ( 33.3% ) of genes in pham
- Manual Annotations of this start: 7 of 28
- Called 80.0% of time when present
- Phage (with cluster) where this start called: Dalilpop\_6 (CR1), Ennea\_6 (CR3), Flapper\_6 (CR1), Float294\_6 (CR3), GRU1\_89 (CR1), Lollipop1437\_6 (CR3), Patio\_7 (CR3), Skysand\_6 (CR3),

### Start 7:

- Found in 8 of 30 ( 26.7% ) of genes in pham
- Manual Annotations of this start: 3 of 28
- Called 50.0% of time when present
- Phage (with cluster) where this start called: Biskit\_40 (CT), GTE5\_88 (CR1), SketchMex\_38 (CT), Turuncu\_6 (CR1),

### Start 8:

- Found in 14 of 30 ( 46.7% ) of genes in pham
- Manual Annotations of this start: 14 of 28
- Called 100.0% of time when present
- Phage (with cluster) where this start called: Auspice\_53 (M1), Bongo\_53 (M1), Bricole\_53 (M1), Diminimus\_54 (M1), Dulcita\_54 (M1), Glaske16\_54 (M1), IPhane7\_53 (M1), LilhomieP\_52 (M1), Nanosmite\_58 (M3), PegLeg\_53 (M1), Reindeer\_55 (M1), Skinny\_54 (M1), SlimJimmy\_52 (M1), TyDawg\_53 (M1),

### Start 9:

- Found in 1 of 30 ( 3.3% ) of genes in pham
- Manual Annotations of this start: 1 of 28
- Called 100.0% of time when present
- Phage (with cluster) where this start called: Gail\_69 (A14),

## Summary by clusters:

There are 7 clusters represented in this pham: CR3, CR1, A14, CR5, M1, M3, CT,

Info for manual annotations of cluster A14:

- Start number 9 was manually annotated 1 time for cluster A14.

Info for manual annotations of cluster CR1:

- Start number 5 was manually annotated 2 times for cluster CR1.

- Start number 7 was manually annotated 1 time for cluster CR1.

Info for manual annotations of cluster CR3:

- Start number 5 was manually annotated 5 times for cluster CR3.

Info for manual annotations of cluster CR5:

- Start number 3 was manually annotated 2 times for cluster CR5.

Info for manual annotations of cluster CT:

- Start number 4 was manually annotated 1 time for cluster CT.
- Start number 7 was manually annotated 2 times for cluster CT.

Info for manual annotations of cluster M1:

- Start number 8 was manually annotated 13 times for cluster M1.

Info for manual annotations of cluster M3:

- Start number 8 was manually annotated 1 time for cluster M3.

### ***Gene Information:***

Gene: *Auspice\_53* Start: 38208, Stop: 38381, Start Num: 8

Candidate Starts for *Auspice\_53*:

(Start: 8 @38208 has 14 MA's), (10, 38232), (15, 38280), (18, 38298),

Gene: *Biskit\_40* Start: 27315, Stop: 27118, Start Num: 7

Candidate Starts for *Biskit\_40*:

(Start: 7 @27315 has 3 MA's), (12, 27267), (14, 27237), (16, 27219), (18, 27213), (21, 27189), (26, 27165), (28, 27147), (30, 27129),

Gene: *Bongo\_53* Start: 38212, Stop: 38385, Start Num: 8

Candidate Starts for *Bongo\_53*:

(Start: 8 @38212 has 14 MA's), (10, 38236), (15, 38284), (18, 38302),

Gene: *Bricole\_53* Start: 38194, Stop: 38367, Start Num: 8

Candidate Starts for *Bricole\_53*:

(Start: 8 @38194 has 14 MA's), (10, 38218), (15, 38266), (18, 38284),

Gene: *Dalilpop\_6* Start: 4569, Stop: 4790, Start Num: 5

Candidate Starts for *Dalilpop\_6*:

(Start: 5 @4569 has 7 MA's), (Start: 7 @4581 has 3 MA's), (10, 4617), (25, 4728), (27, 4746), (28, 4749),

Gene: *Diminimus\_54* Start: 38207, Stop: 38380, Start Num: 8

Candidate Starts for *Diminimus\_54*:

(Start: 8 @38207 has 14 MA's), (10, 38231), (15, 38279), (18, 38297),

Gene: *Dulcita\_54* Start: 38208, Stop: 38381, Start Num: 8

Candidate Starts for *Dulcita\_54*:

(Start: 8 @38208 has 14 MA's), (10, 38232), (15, 38280), (18, 38298),

Gene: *Ennea\_6* Start: 4376, Stop: 4606, Start Num: 5

Candidate Starts for Ennea\_6:

(Start: 5 @4376 has 7 MA's), (18, 4490), (19, 4496), (23, 4520), (25, 4535), (28, 4556),

Gene: Flapper\_6 Start: 3864, Stop: 4085, Start Num: 5

Candidate Starts for Flapper\_6:

(Start: 5 @3864 has 7 MA's), (Start: 7 @3876 has 3 MA's), (10, 3912), (25, 4023), (28, 4044),

Gene: Float294\_6 Start: 4362, Stop: 4592, Start Num: 5

Candidate Starts for Float294\_6:

(Start: 5 @4362 has 7 MA's), (18, 4476), (19, 4482), (23, 4506), (25, 4521), (28, 4542),

Gene: Fury\_5 Start: 2948, Stop: 3193, Start Num: 3

Candidate Starts for Fury\_5:

(2, 2900), (Start: 3 @2948 has 2 MA's), (6, 2972), (16, 3077), (18, 3083), (29, 3155),

Gene: GRU1\_89 Start: 62882, Stop: 63103, Start Num: 5

Candidate Starts for GRU1\_89:

(Start: 5 @62882 has 7 MA's), (Start: 7 @62894 has 3 MA's), (10, 62930), (25, 63041), (28, 63062),

Gene: GTE5\_88 Start: 63789, Stop: 63998, Start Num: 7

Candidate Starts for GTE5\_88:

(Start: 5 @63777 has 7 MA's), (Start: 7 @63789 has 3 MA's), (10, 63825), (25, 63936), (28, 63957),

Gene: Gail\_69 Start: 42059, Stop: 41856, Start Num: 9

Candidate Starts for Gail\_69:

(Start: 9 @42059 has 1 MA's), (13, 42026), (20, 41963), (24, 41936), (25, 41930),

Gene: Glaske16\_54 Start: 38207, Stop: 38380, Start Num: 8

Candidate Starts for Glaske16\_54:

(Start: 8 @38207 has 14 MA's), (10, 38231), (15, 38279), (18, 38297),

Gene: IPHane7\_53 Start: 38212, Stop: 38385, Start Num: 8

Candidate Starts for IPHane7\_53:

(Start: 8 @38212 has 14 MA's), (10, 38236), (15, 38284), (18, 38302),

Gene: LilhomieP\_52 Start: 38212, Stop: 38385, Start Num: 8

Candidate Starts for LilhomieP\_52:

(Start: 8 @38212 has 14 MA's), (10, 38236), (15, 38284), (18, 38302),

Gene: Lollipop1437\_6 Start: 4364, Stop: 4594, Start Num: 5

Candidate Starts for Lollipop1437\_6:

(Start: 5 @4364 has 7 MA's), (18, 4478), (19, 4484), (23, 4508), (25, 4523), (28, 4544),

Gene: Nanosmite\_58 Start: 39866, Stop: 40042, Start Num: 8

Candidate Starts for Nanosmite\_58:

(1, 39743), (Start: 8 @39866 has 14 MA's), (11, 39902), (18, 39959), (24, 39998),

Gene: Patio\_7 Start: 5032, Stop: 5262, Start Num: 5

Candidate Starts for Patio\_7:

(Start: 5 @5032 has 7 MA's), (18, 5146), (19, 5152), (22, 5173), (23, 5176), (25, 5191), (28, 5212),

Gene: PegLeg\_53 Start: 38211, Stop: 38384, Start Num: 8

Candidate Starts for PegLeg\_53:

(Start: 8 @38211 has 14 MA's), (10, 38235), (15, 38283), (18, 38301),

Gene: Pleakley\_5 Start: 2948, Stop: 3193, Start Num: 3

Candidate Starts for Pleakley\_5:

(2, 2900), (Start: 3 @2948 has 2 MA's), (6, 2972), (16, 3077), (18, 3083), (29, 3155),

Gene: Reindeer\_55 Start: 39414, Stop: 39587, Start Num: 8

Candidate Starts for Reindeer\_55:

(1, 39291), (Start: 8 @39414 has 14 MA's), (17, 39501), (18, 39504),

Gene: SketchMex\_38 Start: 27315, Stop: 27118, Start Num: 7

Candidate Starts for SketchMex\_38:

(Start: 7 @27315 has 3 MA's), (12, 27267), (14, 27237), (16, 27219), (18, 27213), (21, 27189), (26, 27165), (28, 27147), (30, 27129),

Gene: Skinny\_54 Start: 38641, Stop: 38814, Start Num: 8

Candidate Starts for Skinny\_54:

(Start: 8 @38641 has 14 MA's), (10, 38665), (15, 38713), (18, 38731),

Gene: Skysand\_6 Start: 4364, Stop: 4594, Start Num: 5

Candidate Starts for Skysand\_6:

(Start: 5 @4364 has 7 MA's), (18, 4478), (19, 4484), (23, 4508), (25, 4523), (28, 4544),

Gene: SlimJimmy\_52 Start: 38195, Stop: 38368, Start Num: 8

Candidate Starts for SlimJimmy\_52:

(Start: 8 @38195 has 14 MA's), (10, 38219), (15, 38267), (18, 38285),

Gene: Troje\_40 Start: 27694, Stop: 27467, Start Num: 4

Candidate Starts for Troje\_40:

(Start: 4 @27694 has 1 MA's), (Start: 7 @27664 has 3 MA's), (12, 27616), (14, 27586), (16, 27568), (18, 27562), (21, 27538), (26, 27514), (28, 27496),

Gene: Turuncu\_6 Start: 3772, Stop: 3981, Start Num: 7

Candidate Starts for Turuncu\_6:

(Start: 5 @3760 has 7 MA's), (Start: 7 @3772 has 3 MA's), (10, 3808), (25, 3919), (27, 3937), (28, 3940),

Gene: TyDawg\_53 Start: 38212, Stop: 38385, Start Num: 8

Candidate Starts for TyDawg\_53:

(Start: 8 @38212 has 14 MA's), (10, 38236), (15, 38284), (18, 38302),