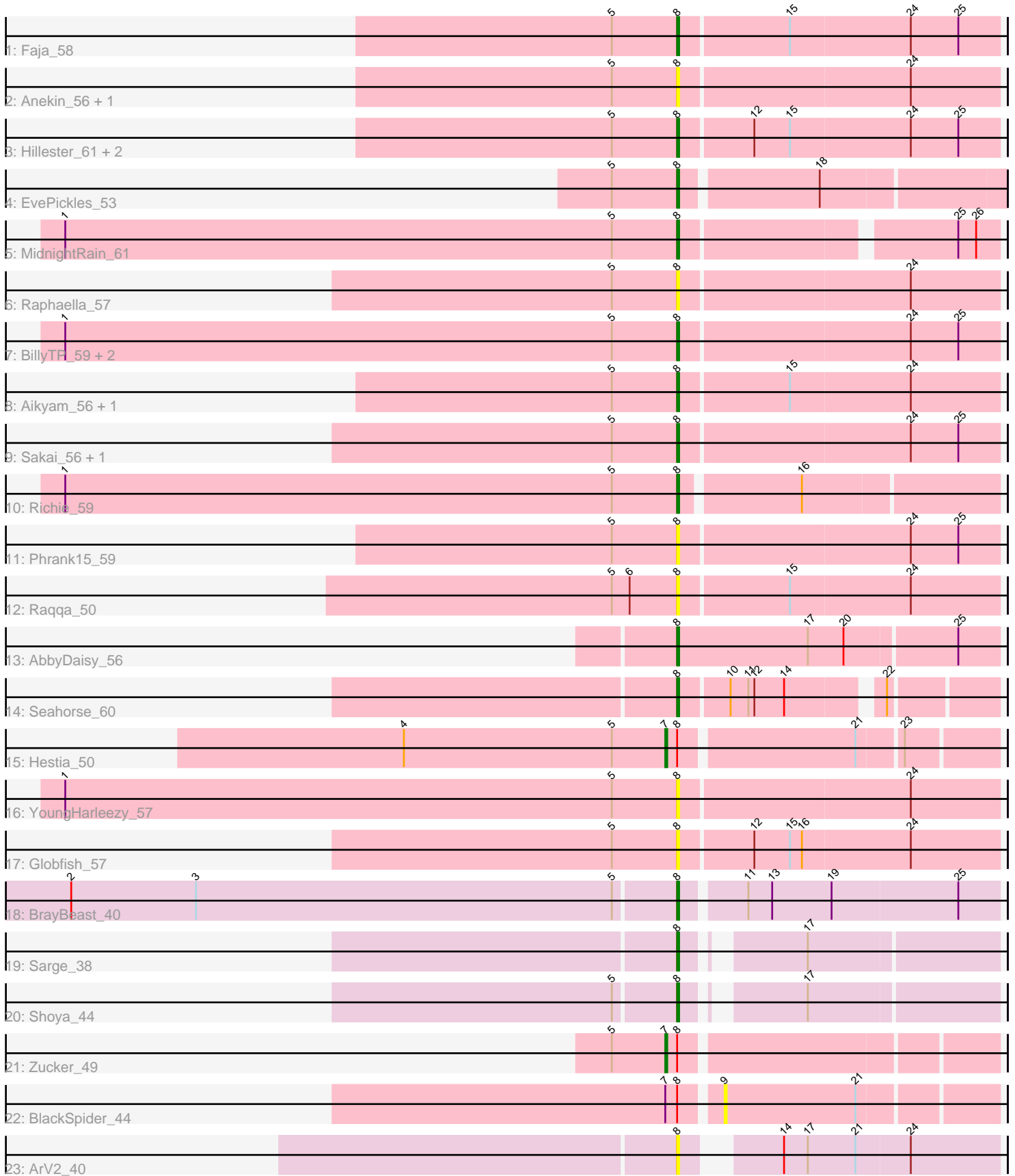


Pham 158082



Note: Tracks are now grouped by subcluster and scaled. Switching in subcluster is indicated by changes in track color. Track scale is now set by default to display the region 30 bp upstream of start 1 to 30 bp downstream of the last possible start. If this default region is judged to be packed too tightly with annotated starts, the track will be further scaled to only show that region of the ORF with annotated starts. This action will be indicated by adding "Zoomed" to the title. For starts, yellow indicates the location of called starts comprised solely of Glimmer/GeneMark auto-annotations, green indicates the location of called starts with at least 1 manual gene annotation.

Pham 158082 Report

This analysis was run 04/13/24 on database version 558.

Pham number 158082 has 30 members, 14 are drafts.

Phages represented in each track:

- Track 1 : Faja_58
- Track 2 : Anekin_56, BenchScraper_56
- Track 3 : Hillester_61, RadFad_61, Tiff81_57
- Track 4 : EvePickles_53
- Track 5 : MidnightRain_61
- Track 6 : Raphaella_57
- Track 7 : BillyTP_59, CookieBear_57, Isolde_56
- Track 8 : Aikyam_56, Auxilium_53
- Track 9 : Sakai_56, Gorpy_57
- Track 10 : Richie_59
- Track 11 : Phrank15_59
- Track 12 : Raqqa_50
- Track 13 : AbbyDaisy_56
- Track 14 : Seahorse_60
- Track 15 : Hestia_50
- Track 16 : YoungHarleezy_57
- Track 17 : Globfish_57
- Track 18 : BrayBeast_40
- Track 19 : Sarge_38
- Track 20 : Shoya_44
- Track 21 : Zucker_49
- Track 22 : BlackSpider_44
- Track 23 : ArV2_40

Summary of Final Annotations (See graph section above for start numbers):

The start number called the most often in the published annotations is 8, it was called in 14 of the 16 non-draft genes in the pham.

Genes that call this "Most Annotated" start:

• AbbyDaisy_56, Aikyam_56, Anekin_56, ArV2_40, Auxilium_53, BenchScraper_56, BillyTP_59, BrayBeast_40, CookieBear_57, EvePickles_53, Faja_58, Globfish_57, Gorpy_57, Hillester_61, Isolde_56, MidnightRain_61, Phrank15_59, RadFad_61, Raphaella_57, Raqqa_50, Richie_59, Sakai_56, Sarge_38, Seahorse_60, Shoya_44,

Tiff81_57, YoungHarleezy_57,

Genes that have the "Most Annotated" start but do not call it:

- BlackSpider_44, Hestia_50, Zucker_49,

Genes that do not have the "Most Annotated" start:

-

Summary by start number:

Start 7:

- Found in 3 of 30 (10.0%) of genes in pham
- Manual Annotations of this start: 2 of 16
- Called 66.7% of time when present
- Phage (with cluster) where this start called: Hestia_50 (AY), Zucker_49 (FN),

Start 8:

- Found in 30 of 30 (100.0%) of genes in pham
- Manual Annotations of this start: 14 of 16
- Called 90.0% of time when present
- Phage (with cluster) where this start called: AbbyDaisy_56 (AY), Aikyam_56 (AY), Anekin_56 (AY), ArV2_40 (singleton), Auxilium_53 (AY), BenchScraper_56 (AY), BillyTP_59 (AY), BrayBeast_40 (FB), CookieBear_57 (AY), EvePickles_53 (AY), Faja_58 (AY), Globfish_57 (AY), Gorpy_57 (AY), Hillester_61 (AY), Isolde_56 (AY), MidnightRain_61 (AY), Phrank15_59 (AY), RadFad_61 (AY), Raphaella_57 (AY), Raqqa_50 (AY), Richie_59 (AY), Sakai_56 (AY), Sarge_38 (FB), Seahorse_60 (AY), Shoya_44 (FB), Tiff81_57 (AY), YoungHarleezy_57 (AY),

Start 9:

- Found in 1 of 30 (3.3%) of genes in pham
- No Manual Annotations of this start.
- Called 100.0% of time when present
- Phage (with cluster) where this start called: BlackSpider_44 (FN),

Summary by clusters:

There are 4 clusters represented in this pham: AY, FB, singleton, FN,

Info for manual annotations of cluster AY:

- Start number 7 was manually annotated 1 time for cluster AY.
- Start number 8 was manually annotated 11 times for cluster AY.

Info for manual annotations of cluster FB:

- Start number 8 was manually annotated 3 times for cluster FB.

Info for manual annotations of cluster FN:

- Start number 7 was manually annotated 1 time for cluster FN.

Gene Information:

Gene: AbbyDaisy_56 Start: 33760, Stop: 33918, Start Num: 8

Candidate Starts for AbbyDaisy_56:
(Start: 8 @33760 has 14 MA's), (17, 33826), (20, 33844), (25, 33898),

Gene: Aikyam_56 Start: 31872, Stop: 32030, Start Num: 8
Candidate Starts for Aikyam_56:
(5, 31839), (Start: 8 @31872 has 14 MA's), (15, 31926), (24, 31986),

Gene: Anekin_56 Start: 33544, Stop: 33702, Start Num: 8
Candidate Starts for Anekin_56:
(5, 33511), (Start: 8 @33544 has 14 MA's), (24, 33658),

Gene: ArV2_40 Start: 25889, Stop: 26032, Start Num: 8
Candidate Starts for ArV2_40:
(Start: 8 @25889 has 14 MA's), (14, 25925), (17, 25937), (21, 25961), (24, 25988),

Gene: Auxilium_53 Start: 31029, Stop: 31187, Start Num: 8
Candidate Starts for Auxilium_53:
(5, 30996), (Start: 8 @31029 has 14 MA's), (15, 31083), (24, 31143),

Gene: BenchScraper_56 Start: 33194, Stop: 33352, Start Num: 8
Candidate Starts for BenchScraper_56:
(5, 33161), (Start: 8 @33194 has 14 MA's), (24, 33308),

Gene: BillyTP_59 Start: 35066, Stop: 35224, Start Num: 8
Candidate Starts for BillyTP_59:
(1, 34757), (5, 35033), (Start: 8 @35066 has 14 MA's), (24, 35180), (25, 35204),

Gene: BlackSpider_44 Start: 30207, Stop: 30338, Start Num: 9
Candidate Starts for BlackSpider_44:
(Start: 7 @30183 has 2 MA's), (Start: 8 @30189 has 14 MA's), (9, 30207), (21, 30273),

Gene: BrayBeast_40 Start: 27217, Stop: 27372, Start Num: 8
Candidate Starts for BrayBeast_40:
(2, 26914), (3, 26977), (5, 27187), (Start: 8 @27217 has 14 MA's), (11, 27247), (13, 27259), (19, 27289), (25, 27352),

Gene: CookieBear_57 Start: 33450, Stop: 33608, Start Num: 8
Candidate Starts for CookieBear_57:
(1, 33141), (5, 33417), (Start: 8 @33450 has 14 MA's), (24, 33564), (25, 33588),

Gene: EvePickles_53 Start: 33650, Stop: 33805, Start Num: 8
Candidate Starts for EvePickles_53:
(5, 33617), (Start: 8 @33650 has 14 MA's), (18, 33716),

Gene: Faja_58 Start: 35034, Stop: 35192, Start Num: 8
Candidate Starts for Faja_58:
(5, 35001), (Start: 8 @35034 has 14 MA's), (15, 35088), (24, 35148), (25, 35172),

Gene: Globfish_57 Start: 33549, Stop: 33707, Start Num: 8
Candidate Starts for Globfish_57:
(5, 33516), (Start: 8 @33549 has 14 MA's), (12, 33585), (15, 33603), (16, 33609), (24, 33663),

Gene: Gorpy_57 Start: 34442, Stop: 34600, Start Num: 8

Candidate Starts for Gorpy_57:

(5, 34409), (Start: 8 @34442 has 14 MA's), (24, 34556), (25, 34580),

Gene: Hestia_50 Start: 31086, Stop: 31241, Start Num: 7

Candidate Starts for Hestia_50:

(4, 30954), (5, 31059), (Start: 7 @31086 has 2 MA's), (Start: 8 @31092 has 14 MA's), (21, 31176), (23, 31197),

Gene: Hillester_61 Start: 34795, Stop: 34953, Start Num: 8

Candidate Starts for Hillester_61:

(5, 34762), (Start: 8 @34795 has 14 MA's), (12, 34831), (15, 34849), (24, 34909), (25, 34933),

Gene: Isolde_56 Start: 33119, Stop: 33277, Start Num: 8

Candidate Starts for Isolde_56:

(1, 32810), (5, 33086), (Start: 8 @33119 has 14 MA's), (24, 33233), (25, 33257),

Gene: MidnightRain_61 Start: 34972, Stop: 35121, Start Num: 8

Candidate Starts for MidnightRain_61:

(1, 34663), (5, 34939), (Start: 8 @34972 has 14 MA's), (25, 35101), (26, 35110),

Gene: Phrank15_59 Start: 33748, Stop: 33906, Start Num: 8

Candidate Starts for Phrank15_59:

(5, 33715), (Start: 8 @33748 has 14 MA's), (24, 33862), (25, 33886),

Gene: RadFad_61 Start: 34795, Stop: 34953, Start Num: 8

Candidate Starts for RadFad_61:

(5, 34762), (Start: 8 @34795 has 14 MA's), (12, 34831), (15, 34849), (24, 34909), (25, 34933),

Gene: Raphaella_57 Start: 33054, Stop: 33212, Start Num: 8

Candidate Starts for Raphaella_57:

(5, 33021), (Start: 8 @33054 has 14 MA's), (24, 33168),

Gene: Raqqa_50 Start: 31059, Stop: 31217, Start Num: 8

Candidate Starts for Raqqa_50:

(5, 31026), (6, 31035), (Start: 8 @31059 has 14 MA's), (15, 31113), (24, 31173),

Gene: Richie_59 Start: 34120, Stop: 34272, Start Num: 8

Candidate Starts for Richie_59:

(1, 33811), (5, 34087), (Start: 8 @34120 has 14 MA's), (16, 34177),

Gene: Sakai_56 Start: 33153, Stop: 33311, Start Num: 8

Candidate Starts for Sakai_56:

(5, 33120), (Start: 8 @33153 has 14 MA's), (24, 33267), (25, 33291),

Gene: Sarge_38 Start: 25563, Stop: 25703, Start Num: 8

Candidate Starts for Sarge_38:

(Start: 8 @25563 has 14 MA's), (17, 25611),

Gene: Seahorse_60 Start: 35386, Stop: 35529, Start Num: 8

Candidate Starts for Seahorse_60:

(Start: 8 @35386 has 14 MA's), (10, 35410), (11, 35419), (12, 35422), (14, 35437), (22, 35479),

Gene: Shoya_44 Start: 27531, Stop: 27671, Start Num: 8

Candidate Starts for Shoya_44:

(5, 27501), (Start: 8 @27531 has 14 MA's), (17, 27579),

Gene: Tiff81_57 Start: 31564, Stop: 31722, Start Num: 8

Candidate Starts for Tiff81_57:

(5, 31531), (Start: 8 @31564 has 14 MA's), (12, 31600), (15, 31618), (24, 31678), (25, 31702),

Gene: YoungHarleezy_57 Start: 33617, Stop: 33775, Start Num: 8

Candidate Starts for YoungHarleezy_57:

(1, 33308), (5, 33584), (Start: 8 @33617 has 14 MA's), (24, 33731),

Gene: Zucker_49 Start: 32109, Stop: 32264, Start Num: 7

Candidate Starts for Zucker_49:

(5, 32082), (Start: 7 @32109 has 2 MA's), (Start: 8 @32115 has 14 MA's),