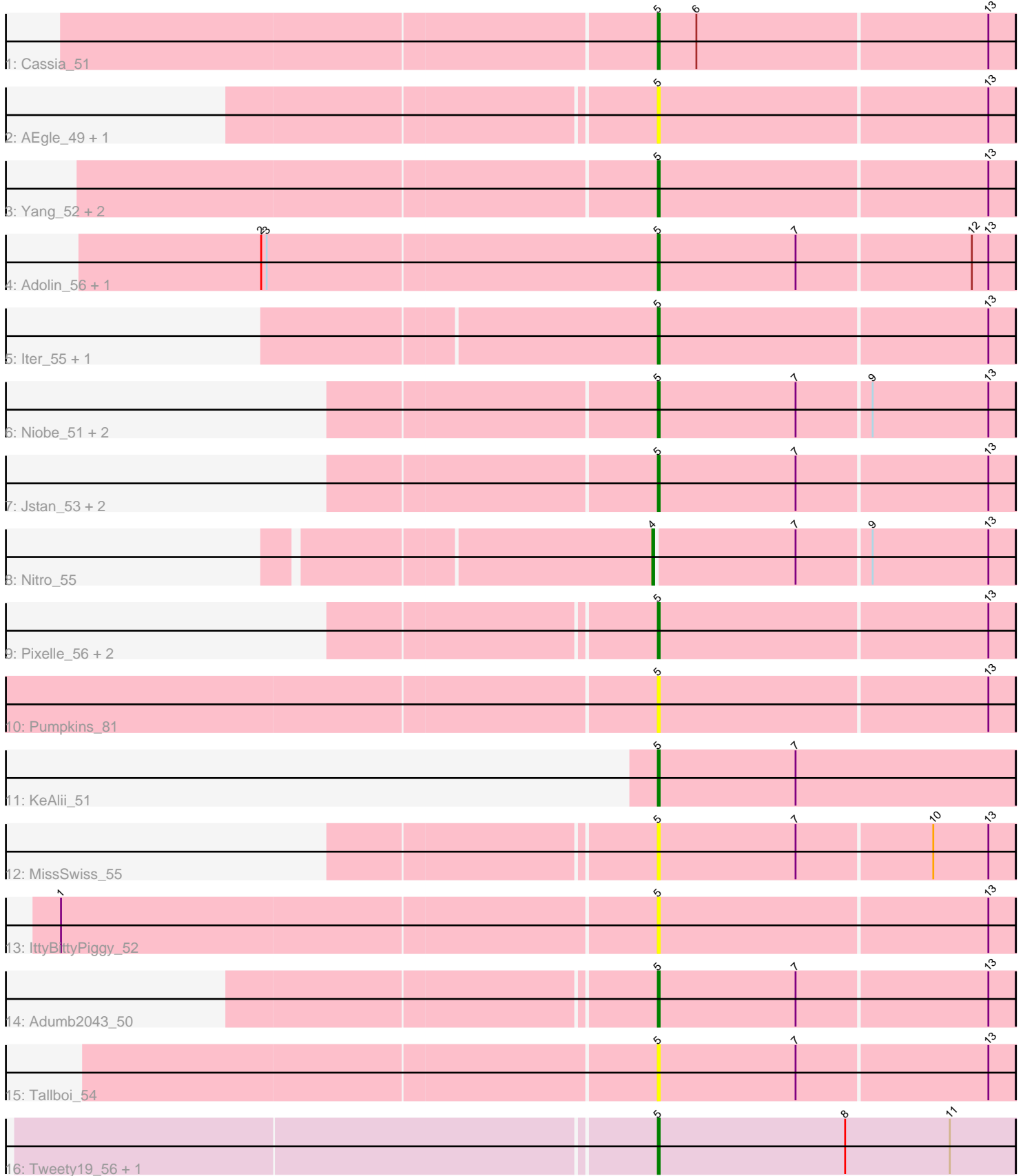


Pham 158097



Note: Tracks are now grouped by subcluster and scaled. Switching in subcluster is indicated by changes in track color. Track scale is now set by default to display the region 30 bp upstream of start 1 to 30 bp downstream of the last possible start. If this default region is judged to be packed too tightly with annotated starts, the track will be further scaled to only show that region of the ORF with annotated starts. This action will be indicated by adding "Zoomed" to the title. For starts, yellow indicates the location of called starts comprised solely of Glimmer/GeneMark auto-annotations, green indicates the location of called starts with at least 1 manual gene annotation.

## Pham 158097 Report

This analysis was run 04/13/24 on database version 558.

Pham number 158097 has 28 members, 10 are drafts.

Phages represented in each track:

- Track 1 : Cassia\_51
- Track 2 : AEgle\_49, Turab\_50
- Track 3 : Yang\_52, TforTroy\_53, JuneStar\_54
- Track 4 : Adolin\_56, DrManhattan\_55
- Track 5 : Iter\_55, Ascela\_55
- Track 6 : Niobe\_51, Asa16\_51, London\_51
- Track 7 : Jstan\_53, Elezi\_51, Eraser\_51
- Track 8 : Nitro\_55
- Track 9 : Pixelle\_56, Tian\_53, Amyev\_54
- Track 10 : Pumpkins\_81
- Track 11 : KeAlii\_51
- Track 12 : MissSwiss\_55
- Track 13 : IttyBittyPiggy\_52
- Track 14 : Adumb2043\_50
- Track 15 : Tallboi\_54
- Track 16 : Tweety19\_56, Snek\_55

### ***Summary of Final Annotations (See graph section above for start numbers):***

The start number called the most often in the published annotations is 5, it was called in 17 of the 18 non-draft genes in the pham.

Genes that call this "Most Annotated" start:

- AEgle\_49, Adolin\_56, Adumb2043\_50, Amyev\_54, Asa16\_51, Ascela\_55, Cassia\_51, DrManhattan\_55, Elezi\_51, Eraser\_51, Iter\_55, IttyBittyPiggy\_52, Jstan\_53, JuneStar\_54, KeAlii\_51, London\_51, MissSwiss\_55, Niobe\_51, Pixelle\_56, Pumpkins\_81, Snek\_55, Tallboi\_54, TforTroy\_53, Tian\_53, Turab\_50, Tweety19\_56, Yang\_52,

Genes that have the "Most Annotated" start but do not call it:

- 

Genes that do not have the "Most Annotated" start:

- Nitro\_55,

## Summary by start number:

### Start 4:

- Found in 1 of 28 ( 3.6% ) of genes in pham
- Manual Annotations of this start: 1 of 18
- Called 100.0% of time when present
- Phage (with cluster) where this start called: Nitro\_55 (AZ1),

### Start 5:

- Found in 27 of 28 ( 96.4% ) of genes in pham
- Manual Annotations of this start: 17 of 18
- Called 100.0% of time when present
- Phage (with cluster) where this start called: AEgle\_49 (AZ1), Adolin\_56 (AZ1), Adumb2043\_50 (AZ1), Amyev\_54 (AZ1), Asa16\_51 (AZ1), Ascela\_55 (AZ1), Cassia\_51 (AZ1), DrManhattan\_55 (AZ1), Elezi\_51 (AZ1), Eraser\_51 (AZ1), Iter\_55 (AZ1), IttyBittyPiggy\_52 (AZ1), Jstan\_53 (AZ1), JuneStar\_54 (AZ1), KeAlii\_51 (AZ1), London\_51 (AZ1), MissSwiss\_55 (AZ1), Niobe\_51 (AZ1), Pixelle\_56 (AZ1), Pumpkins\_81 (AZ1), Snek\_55 (AZ3), Tallboi\_54 (AZ1), TforTroy\_53 (AZ1), Tian\_53 (AZ1), Turab\_50 (AZ1), Tweety19\_56 (AZ3), Yang\_52 (AZ1),

## Summary by clusters:

There are 2 clusters represented in this pham: AZ1, AZ3,

### Info for manual annotations of cluster AZ1:

- Start number 4 was manually annotated 1 time for cluster AZ1.
- Start number 5 was manually annotated 15 times for cluster AZ1.

### Info for manual annotations of cluster AZ3:

- Start number 5 was manually annotated 2 times for cluster AZ3.

## Gene Information:

Gene: AEgle\_49 Start: 36534, Stop: 36725, Start Num: 5

Candidate Starts for AEgle\_49:

(Start: 5 @36534 has 17 MA's), (13, 36711),

Gene: Adolin\_56 Start: 36952, Stop: 37143, Start Num: 5

Candidate Starts for Adolin\_56:

(2, 36739), (3, 36742), (Start: 5 @36952 has 17 MA's), (7, 37027), (12, 37120), (13, 37129),

Gene: Adumb2043\_50 Start: 36555, Stop: 36746, Start Num: 5

Candidate Starts for Adumb2043\_50:

(Start: 5 @36555 has 17 MA's), (7, 36630), (13, 36732),

Gene: Amyev\_54 Start: 39992, Stop: 40183, Start Num: 5

Candidate Starts for Amyev\_54:

(Start: 5 @39992 has 17 MA's), (13, 40169),

Gene: Asa16\_51 Start: 38109, Stop: 38300, Start Num: 5

Candidate Starts for Asa16\_51:  
(Start: 5 @38109 has 17 MA's), (7, 38184), (9, 38223), (13, 38286),

Gene: Ascela\_55 Start: 38387, Stop: 38578, Start Num: 5  
Candidate Starts for Ascela\_55:  
(Start: 5 @38387 has 17 MA's), (13, 38564),

Gene: Cassia\_51 Start: 37300, Stop: 37491, Start Num: 5  
Candidate Starts for Cassia\_51:  
(Start: 5 @37300 has 17 MA's), (6, 37321), (13, 37477),

Gene: DrManhattan\_55 Start: 36520, Stop: 36711, Start Num: 5  
Candidate Starts for DrManhattan\_55:  
(2, 36307), (3, 36310), (Start: 5 @36520 has 17 MA's), (7, 36595), (12, 36688), (13, 36697),

Gene: Elezi\_51 Start: 38107, Stop: 38298, Start Num: 5  
Candidate Starts for Elezi\_51:  
(Start: 5 @38107 has 17 MA's), (7, 38182), (13, 38284),

Gene: Eraser\_51 Start: 38116, Stop: 38307, Start Num: 5  
Candidate Starts for Eraser\_51:  
(Start: 5 @38116 has 17 MA's), (7, 38191), (13, 38293),

Gene: Iter\_55 Start: 38379, Stop: 38570, Start Num: 5  
Candidate Starts for Iter\_55:  
(Start: 5 @38379 has 17 MA's), (13, 38556),

Gene: IttyBittyPiggy\_52 Start: 36888, Stop: 37079, Start Num: 5  
Candidate Starts for IttyBittyPiggy\_52:  
(1, 36570), (Start: 5 @36888 has 17 MA's), (13, 37065),

Gene: Jstan\_53 Start: 38111, Stop: 38302, Start Num: 5  
Candidate Starts for Jstan\_53:  
(Start: 5 @38111 has 17 MA's), (7, 38186), (13, 38288),

Gene: JuneStar\_54 Start: 40230, Stop: 40421, Start Num: 5  
Candidate Starts for JuneStar\_54:  
(Start: 5 @40230 has 17 MA's), (13, 40407),

Gene: KeAlii\_51 Start: 37294, Stop: 37488, Start Num: 5  
Candidate Starts for KeAlii\_51:  
(Start: 5 @37294 has 17 MA's), (7, 37369),

Gene: London\_51 Start: 38107, Stop: 38298, Start Num: 5  
Candidate Starts for London\_51:  
(Start: 5 @38107 has 17 MA's), (7, 38182), (9, 38221), (13, 38284),

Gene: MissSwiss\_55 Start: 36695, Stop: 36886, Start Num: 5  
Candidate Starts for MissSwiss\_55:  
(Start: 5 @36695 has 17 MA's), (7, 36770), (10, 36842), (13, 36872),

Gene: Niobe\_51 Start: 38110, Stop: 38301, Start Num: 5  
Candidate Starts for Niobe\_51:

(Start: 5 @38110 has 17 MA's), (7, 38185), (9, 38224), (13, 38287),

Gene: Nitro\_55 Start: 39409, Stop: 39600, Start Num: 4

Candidate Starts for Nitro\_55:

(Start: 4 @39409 has 1 MA's), (7, 39484), (9, 39523), (13, 39586),

Gene: Pixelle\_56 Start: 40337, Stop: 40528, Start Num: 5

Candidate Starts for Pixelle\_56:

(Start: 5 @40337 has 17 MA's), (13, 40514),

Gene: Pumpkins\_81 Start: 37973, Stop: 38164, Start Num: 5

Candidate Starts for Pumpkins\_81:

(Start: 5 @37973 has 17 MA's), (13, 38150),

Gene: Snek\_55 Start: 37054, Stop: 37248, Start Num: 5

Candidate Starts for Snek\_55:

(Start: 5 @37054 has 17 MA's), (8, 37156), (11, 37213),

Gene: Tallboi\_54 Start: 38465, Stop: 38656, Start Num: 5

Candidate Starts for Tallboi\_54:

(Start: 5 @38465 has 17 MA's), (7, 38540), (13, 38642),

Gene: TforTroy\_53 Start: 37830, Stop: 38021, Start Num: 5

Candidate Starts for TforTroy\_53:

(Start: 5 @37830 has 17 MA's), (13, 38007),

Gene: Tian\_53 Start: 39992, Stop: 40183, Start Num: 5

Candidate Starts for Tian\_53:

(Start: 5 @39992 has 17 MA's), (13, 40169),

Gene: Turab\_50 Start: 36578, Stop: 36769, Start Num: 5

Candidate Starts for Turab\_50:

(Start: 5 @36578 has 17 MA's), (13, 36755),

Gene: Tweety19\_56 Start: 37054, Stop: 37248, Start Num: 5

Candidate Starts for Tweety19\_56:

(Start: 5 @37054 has 17 MA's), (8, 37156), (11, 37213),

Gene: Yang\_52 Start: 37639, Stop: 37830, Start Num: 5

Candidate Starts for Yang\_52:

(Start: 5 @37639 has 17 MA's), (13, 37816),