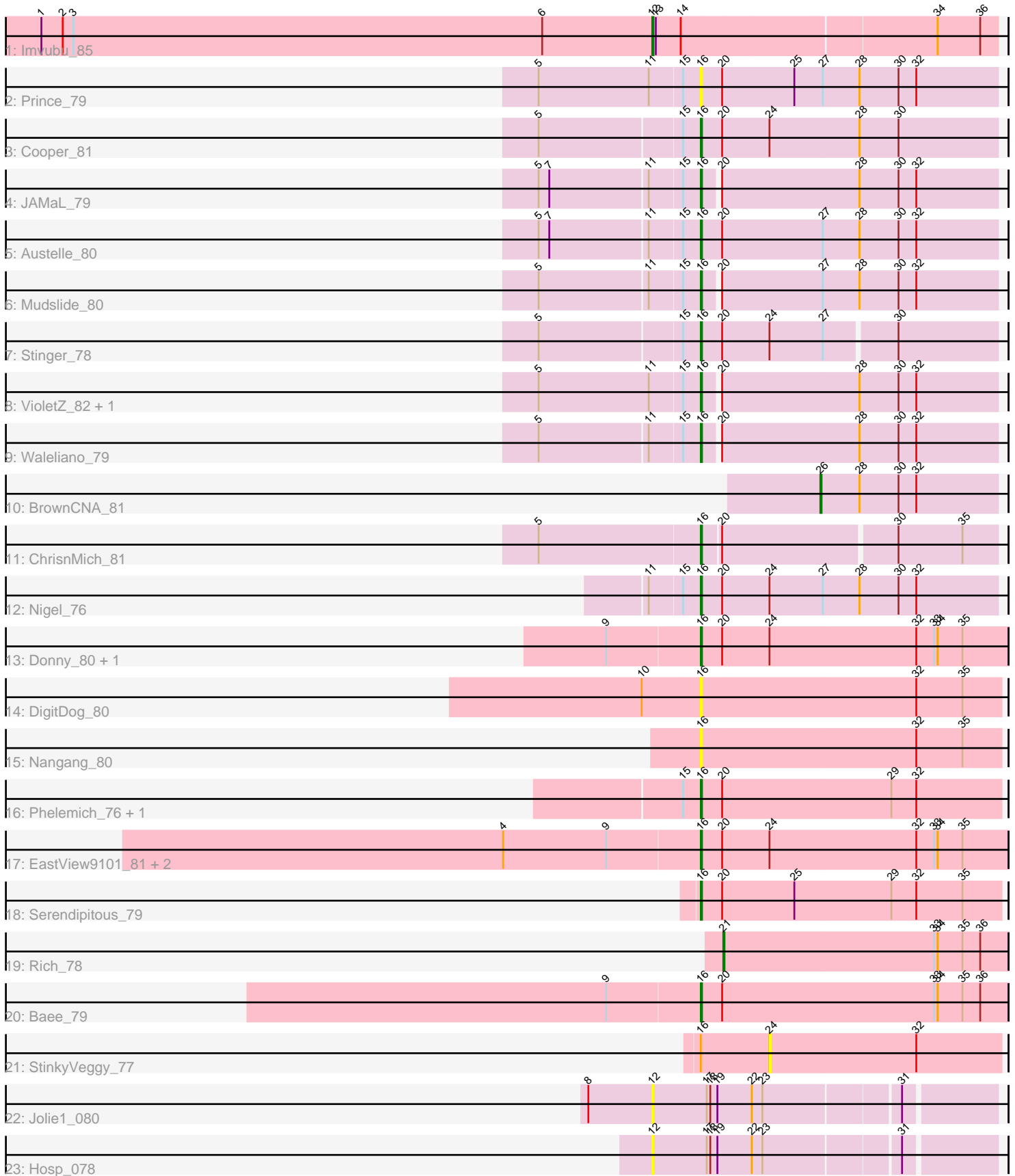


Pham 158098



Note: Tracks are now grouped by subcluster and scaled. Switching in subcluster is indicated by changes in track color. Track scale is now set by default to display the region 30 bp upstream of start 1 to 30 bp downstream of the last possible start. If this default region is judged to be packed too tightly with annotated starts, the track will be further scaled to only show that region of the ORF with annotated starts. This action will be indicated by adding "Zoomed" to the title. For starts, yellow indicates the location of called starts comprised solely of Glimmer/GeneMark auto-annotations, green indicates the location of called starts with at least 1 manual gene annotation.

Pham 158098 Report

This analysis was run 04/13/24 on database version 558.

Pham number 158098 has 28 members, 8 are drafts.

Phages represented in each track:

- Track 1 : Imvubu_85
- Track 2 : Prince_79
- Track 3 : Cooper_81
- Track 4 : JAMaL_79
- Track 5 : Austelle_80
- Track 6 : Mudslide_80
- Track 7 : Stinger_78
- Track 8 : VioletZ_82, Magpie_77
- Track 9 : Waleliano_79
- Track 10 : BrownCNA_81
- Track 11 : ChrisnMich_81
- Track 12 : Nigel_76
- Track 13 : Donny_80, SirJeffery_78
- Track 14 : DigitDog_80
- Track 15 : Nangang_80
- Track 16 : Phelemich_76, Reprobate_78
- Track 17 : EastView9101_81, Acadian_80, Suigeneris_81
- Track 18 : Serendipitous_79
- Track 19 : Rich_78
- Track 20 : Bae_79
- Track 21 : StinkyVeggy_77
- Track 22 : Jolie1_080
- Track 23 : Hosp_078

Summary of Final Annotations (See graph section above for start numbers):

The start number called the most often in the published annotations is 16, it was called in 17 of the 20 non-draft genes in the pham.

Genes that call this "Most Annotated" start:

- Acadian_80, Austelle_80, Bae_79, ChrisnMich_81, Cooper_81, DigitDog_80, Donny_80, EastView9101_81, JAMaL_79, Magpie_77, Mudslide_80, Nangang_80, Nigel_76, Phelemich_76, Prince_79, Reprobate_78, Serendipitous_79, SirJeffery_78, Stinger_78, Suigeneris_81, VioletZ_82, Waleliano_79,

Genes that have the "Most Annotated" start but do not call it:

- StinkyVeggy_77,

Genes that do not have the "Most Annotated" start:

- BrownCNA_81, Hosp_078, Imvubu_85, Jolie1_080, Rich_78,

Summary by start number:

Start 12:

- Found in 3 of 28 (10.7%) of genes in pham
- Manual Annotations of this start: 1 of 20
- Called 100.0% of time when present
- Phage (with cluster) where this start called: Hosp_078 (B6), Imvubu_85 (B10), Jolie1_080 (B6),

Start 16:

- Found in 23 of 28 (82.1%) of genes in pham
- Manual Annotations of this start: 17 of 20
- Called 95.7% of time when present
- Phage (with cluster) where this start called: Acadian_80 (B5), Austelle_80 (B4), Bae_79 (B5), ChrisnMich_81 (B4), Cooper_81 (B4), DigitDog_80 (B5), Donny_80 (B5), EastView9101_81 (B5), JAMaL_79 (B4), Magpie_77 (B4), Mudslide_80 (B4), Nangang_80 (B5), Nigel_76 (B4), Phelemich_76 (B5), Prince_79 (B4), Reprobate_78 (B5), Serendipitous_79 (B5), SirJeffery_78 (B5), Stinger_78 (B4), Suigeneris_81 (B5), VioletZ_82 (B4), Waleliano_79 (B4),

Start 21:

- Found in 1 of 28 (3.6%) of genes in pham
- Manual Annotations of this start: 1 of 20
- Called 100.0% of time when present
- Phage (with cluster) where this start called: Rich_78 (B5),

Start 24:

- Found in 9 of 28 (32.1%) of genes in pham
- No Manual Annotations of this start.
- Called 11.1% of time when present
- Phage (with cluster) where this start called: StinkyVeggy_77 (B5),

Start 26:

- Found in 1 of 28 (3.6%) of genes in pham
- Manual Annotations of this start: 1 of 20
- Called 100.0% of time when present
- Phage (with cluster) where this start called: BrownCNA_81 (B4),

Summary by clusters:

There are 4 clusters represented in this pham: B4, B5, B6, B10,

Info for manual annotations of cluster B10:

- Start number 12 was manually annotated 1 time for cluster B10.

Info for manual annotations of cluster B4:

- Start number 16 was manually annotated 10 times for cluster B4.
- Start number 26 was manually annotated 1 time for cluster B4.

Info for manual annotations of cluster B5:

- Start number 16 was manually annotated 7 times for cluster B5.
- Start number 21 was manually annotated 1 time for cluster B5.

Gene Information:

Gene: Acadian_80 Start: 62958, Stop: 62701, Start Num: 16

Candidate Starts for Acadian_80:

(4, 63123), (9, 63036), (Start: 16 @62958 has 17 MA's), (20, 62940), (24, 62901), (32, 62778), (33, 62763), (34, 62760), (35, 62739),

Gene: Austelle_80 Start: 64860, Stop: 64612, Start Num: 16

Candidate Starts for Austelle_80:

(5, 64992), (7, 64983), (11, 64902), (15, 64875), (Start: 16 @64860 has 17 MA's), (20, 64842), (27, 64758), (28, 64728), (30, 64695), (32, 64680),

Gene: Baee_79 Start: 63594, Stop: 63337, Start Num: 16

Candidate Starts for Baee_79:

(9, 63672), (Start: 16 @63594 has 17 MA's), (20, 63576), (33, 63399), (34, 63396), (35, 63375), (36, 63360),

Gene: BrownCNA_81 Start: 64179, Stop: 64030, Start Num: 26

Candidate Starts for BrownCNA_81:

(Start: 26 @64179 has 1 MA's), (28, 64146), (30, 64113), (32, 64098),

Gene: ChrisnMich_81 Start: 63195, Stop: 62956, Start Num: 16

Candidate Starts for ChrisnMich_81:

(5, 63330), (Start: 16 @63195 has 17 MA's), (20, 63180), (30, 63039), (35, 62985),

Gene: Cooper_81 Start: 63632, Stop: 63384, Start Num: 16

Candidate Starts for Cooper_81:

(5, 63764), (15, 63647), (Start: 16 @63632 has 17 MA's), (20, 63614), (24, 63575), (28, 63500), (30, 63467),

Gene: DigitDog_80 Start: 63071, Stop: 62820, Start Num: 16

Candidate Starts for DigitDog_80:

(10, 63119), (Start: 16 @63071 has 17 MA's), (32, 62891), (35, 62852),

Gene: Donny_80 Start: 62792, Stop: 62535, Start Num: 16

Candidate Starts for Donny_80:

(9, 62870), (Start: 16 @62792 has 17 MA's), (20, 62774), (24, 62735), (32, 62612), (33, 62597), (34, 62594), (35, 62573),

Gene: EastView9101_81 Start: 62702, Stop: 62445, Start Num: 16

Candidate Starts for EastView9101_81:

(4, 62867), (9, 62780), (Start: 16 @62702 has 17 MA's), (20, 62684), (24, 62645), (32, 62522), (33, 62507), (34, 62504), (35, 62483),

Gene: Hosp_078 Start: 61272, Stop: 61000, Start Num: 12
Candidate Starts for Hosp_078:
(Start: 12 @61272 has 1 MA's), (17, 61227), (18, 61224), (19, 61218), (22, 61191), (23, 61182), (31, 61074),

Gene: Imvubu_85 Start: 64146, Stop: 63865, Start Num: 12
Candidate Starts for Imvubu_85:
(1, 64662), (2, 64644), (3, 64635), (6, 64239), (Start: 12 @64146 has 1 MA's), (13, 64143), (14, 64122), (34, 63915), (36, 63879),

Gene: JAMaL_79 Start: 63728, Stop: 63486, Start Num: 16
Candidate Starts for JAMaL_79:
(5, 63860), (7, 63851), (11, 63770), (15, 63743), (Start: 16 @63728 has 17 MA's), (20, 63716), (28, 63602), (30, 63569), (32, 63554),

Gene: Jolie1_080 Start: 63299, Stop: 63027, Start Num: 12
Candidate Starts for Jolie1_080:
(8, 63353), (Start: 12 @63299 has 1 MA's), (17, 63254), (18, 63251), (19, 63245), (22, 63218), (23, 63209), (31, 63101),

Gene: Magpie_77 Start: 63847, Stop: 63605, Start Num: 16
Candidate Starts for Magpie_77:
(5, 63982), (11, 63889), (15, 63862), (Start: 16 @63847 has 17 MA's), (20, 63835), (28, 63721), (30, 63688), (32, 63673),

Gene: Mudslide_80 Start: 64394, Stop: 64152, Start Num: 16
Candidate Starts for Mudslide_80:
(5, 64526), (11, 64436), (15, 64409), (Start: 16 @64394 has 17 MA's), (20, 64382), (27, 64298), (28, 64268), (30, 64235), (32, 64220),

Gene: Nangang_80 Start: 63283, Stop: 63032, Start Num: 16
Candidate Starts for Nangang_80:
(Start: 16 @63283 has 17 MA's), (32, 63103), (35, 63064),

Gene: Nigel_76 Start: 62547, Stop: 62299, Start Num: 16
Candidate Starts for Nigel_76:
(11, 62589), (15, 62562), (Start: 16 @62547 has 17 MA's), (20, 62529), (24, 62490), (27, 62445), (28, 62415), (30, 62382), (32, 62367),

Gene: Phelemich_76 Start: 62744, Stop: 62493, Start Num: 16
Candidate Starts for Phelemich_76:
(15, 62759), (Start: 16 @62744 has 17 MA's), (20, 62726), (29, 62585), (32, 62564),

Gene: Prince_79 Start: 64261, Stop: 64013, Start Num: 16
Candidate Starts for Prince_79:
(5, 64396), (11, 64303), (15, 64276), (Start: 16 @64261 has 17 MA's), (20, 64243), (25, 64183), (27, 64159), (28, 64129), (30, 64096), (32, 64081),

Gene: Reprobate_78 Start: 62749, Stop: 62498, Start Num: 16
Candidate Starts for Reprobate_78:
(15, 62764), (Start: 16 @62749 has 17 MA's), (20, 62731), (29, 62590), (32, 62569),

Gene: Rich_78 Start: 63621, Stop: 63382, Start Num: 21

Candidate Starts for Rich_78:

(Start: 21 @63621 has 1 MA's), (33, 63444), (34, 63441), (35, 63420), (36, 63405),

Gene: Serendipitous_79 Start: 62642, Stop: 62391, Start Num: 16

Candidate Starts for Serendipitous_79:

(Start: 16 @62642 has 17 MA's), (20, 62624), (25, 62564), (29, 62483), (32, 62462), (35, 62423),

Gene: SirJeffery_78 Start: 62742, Stop: 62485, Start Num: 16

Candidate Starts for SirJeffery_78:

(9, 62820), (Start: 16 @62742 has 17 MA's), (20, 62724), (24, 62685), (32, 62562), (33, 62547), (34, 62544), (35, 62523),

Gene: Stinger_78 Start: 62665, Stop: 62423, Start Num: 16

Candidate Starts for Stinger_78:

(5, 62797), (15, 62680), (Start: 16 @62665 has 17 MA's), (20, 62647), (24, 62608), (27, 62563), (30, 62506),

Gene: StinkyVeggy_77 Start: 62535, Stop: 62341, Start Num: 24

Candidate Starts for StinkyVeggy_77:

(Start: 16 @62592 has 17 MA's), (24, 62535), (32, 62412),

Gene: Suigeneris_81 Start: 63180, Stop: 62923, Start Num: 16

Candidate Starts for Suigeneris_81:

(4, 63345), (9, 63258), (Start: 16 @63180 has 17 MA's), (20, 63162), (24, 63123), (32, 63000), (33, 62985), (34, 62982), (35, 62961),

Gene: VioletZ_82 Start: 64351, Stop: 64109, Start Num: 16

Candidate Starts for VioletZ_82:

(5, 64486), (11, 64393), (15, 64366), (Start: 16 @64351 has 17 MA's), (20, 64339), (28, 64225), (30, 64192), (32, 64177),

Gene: Waleliano_79 Start: 64025, Stop: 63783, Start Num: 16

Candidate Starts for Waleliano_79:

(5, 64157), (11, 64067), (15, 64040), (Start: 16 @64025 has 17 MA's), (20, 64013), (28, 63899), (30, 63866), (32, 63851),