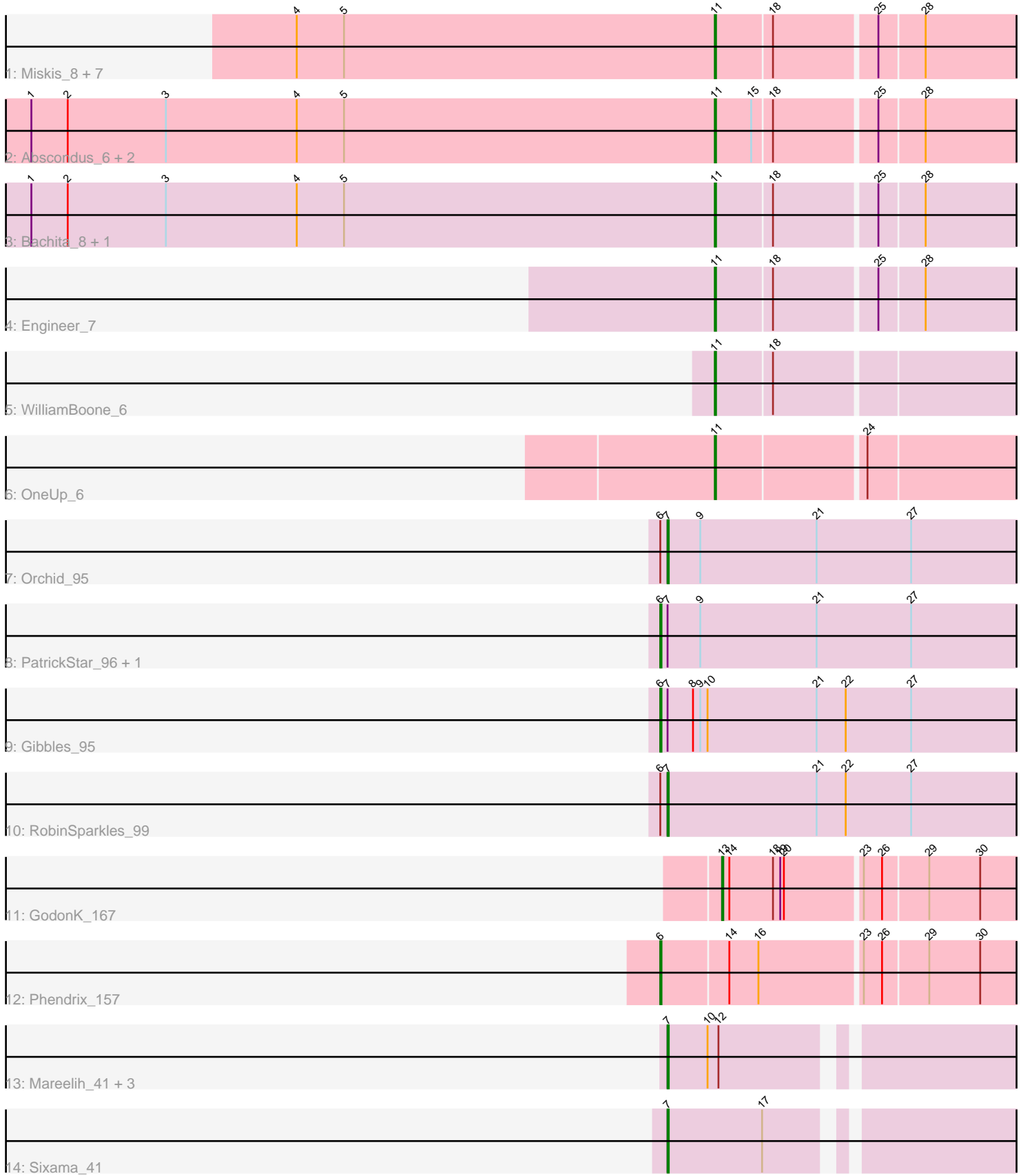


Pham 158104



Note: Tracks are now grouped by subcluster and scaled. Switching in subcluster is indicated by changes in track color. Track scale is now set by default to display the region 30 bp upstream of start 1 to 30 bp downstream of the last possible start. If this default region is judged to be packed too tightly with annotated starts, the track will be further scaled to only show that region of the ORF with annotated starts. This action will be indicated by adding "Zoomed" to the title. For starts, yellow indicates the location of called starts comprised solely of Glimmer/GeneMark auto-annotations, green indicates the location of called starts with at least 1 manual gene annotation.

Pham 158104 Report

This analysis was run 04/13/24 on database version 558.

Pham number 158104 has 28 members, 3 are drafts.

Phages represented in each track:

- Track 1 : Miskis_8, Cucurbita_7, ClubL_7, Toniann_7, Smoothie_7, Lozinak_7, Aphelion_7, Norvs_7
- Track 2 : Abscondus_6, Dusty_6, Culver_6
- Track 3 : Bachita_8, PhinkBoden_8
- Track 4 : Engineer_7
- Track 5 : WilliamBoone_6
- Track 6 : OneUp_6
- Track 7 : Orchid_95
- Track 8 : PatrickStar_96, Kampe_96
- Track 9 : Gibbles_95
- Track 10 : RobinSparkles_99
- Track 11 : GodonK_167
- Track 12 : Phendrix_157
- Track 13 : Mareelih_41, Boopy_43, Forza_42, BlueNGGold_41
- Track 14 : Sixama_41

Summary of Final Annotations (See graph section above for start numbers):

The start number called the most often in the published annotations is 11, it was called in 13 of the 25 non-draft genes in the pham.

Genes that call this "Most Annotated" start:

- Abscondus_6, Aphelion_7, Bachita_8, ClubL_7, Cucurbita_7, Culver_6, Dusty_6, Engineer_7, Lozinak_7, Miskis_8, Norvs_7, OneUp_6, PhinkBoden_8, Smoothie_7, Toniann_7, WilliamBoone_6,

Genes that have the "Most Annotated" start but do not call it:

-

Genes that do not have the "Most Annotated" start:

- BlueNGGold_41, Boopy_43, Forza_42, Gibbles_95, GodonK_167, Kampe_96, Mareelih_41, Orchid_95, PatrickStar_96, Phendrix_157, RobinSparkles_99, Sixama_41,

Summary by start number:

Start 6:

- Found in 6 of 28 (21.4%) of genes in pham
- Manual Annotations of this start: 4 of 25
- Called 66.7% of time when present
- Phage (with cluster) where this start called: Gibbles_95 (CX), Kampe_96 (CX), PatrickStar_96 (CX), Phendrix_157 (DK),

Start 7:

- Found in 10 of 28 (35.7%) of genes in pham
- Manual Annotations of this start: 7 of 25
- Called 70.0% of time when present
- Phage (with cluster) where this start called: BlueNGold_41 (DS), Boopy_43 (DS), Forza_42 (DS), Mareelih_41 (DS), Orchid_95 (CX), RobinSparkles_99 (CX), Sixama_41 (DS),

Start 11:

- Found in 16 of 28 (57.1%) of genes in pham
- Manual Annotations of this start: 13 of 25
- Called 100.0% of time when present
- Phage (with cluster) where this start called: Abscondus_6 (CQ), Aphelion_7 (CQ1), Bachita_8 (CQ1), ClubL_7 (CQ1), Cucurbita_7 (CQ1), Culver_6 (CQ1), Dusty_6 (CQ), Engineer_7 (CQ1), Lozinak_7 (CQ1), Miskis_8 (CQ), Norvs_7 (CQ), OneUp_6 (CQ2), PhinkBoden_8 (CQ1), Smoothie_7 (CQ1), Toniann_7 (CQ1), WilliamBoone_6 (CQ1),

Start 13:

- Found in 1 of 28 (3.6%) of genes in pham
- Manual Annotations of this start: 1 of 25
- Called 100.0% of time when present
- Phage (with cluster) where this start called: GodonK_167 (DK),

Summary by clusters:

There are 6 clusters represented in this pham: DK, DS, CX, CQ2, CQ, CQ1,

Info for manual annotations of cluster CQ:

- Start number 11 was manually annotated 1 time for cluster CQ.

Info for manual annotations of cluster CQ1:

- Start number 11 was manually annotated 11 times for cluster CQ1.

Info for manual annotations of cluster CQ2:

- Start number 11 was manually annotated 1 time for cluster CQ2.

Info for manual annotations of cluster CX:

- Start number 6 was manually annotated 3 times for cluster CX.
- Start number 7 was manually annotated 2 times for cluster CX.

Info for manual annotations of cluster DK:

- Start number 6 was manually annotated 1 time for cluster DK.
- Start number 13 was manually annotated 1 time for cluster DK.

Info for manual annotations of cluster DS:

•Start number 7 was manually annotated 5 times for cluster DS.

Gene Information:

Gene: Abscondus_6 Start: 1603, Stop: 1334, Start Num: 11

Candidate Starts for Abscondus_6:

(1, 2167), (2, 2137), (3, 2056), (4, 1948), (5, 1909), (Start: 11 @1603 has 13 MA's), (15, 1573), (18, 1558), (25, 1477), (28, 1441),

Gene: Aphelion_7 Start: 1779, Stop: 1510, Start Num: 11

Candidate Starts for Aphelion_7:

(4, 2124), (5, 2085), (Start: 11 @1779 has 13 MA's), (18, 1734), (25, 1653), (28, 1617),

Gene: Bachita_8 Start: 2279, Stop: 2010, Start Num: 11

Candidate Starts for Bachita_8:

(1, 2843), (2, 2813), (3, 2732), (4, 2624), (5, 2585), (Start: 11 @2279 has 13 MA's), (18, 2234), (25, 2153), (28, 2117),

Gene: BlueNGold_41 Start: 14735, Stop: 14454, Start Num: 7

Candidate Starts for BlueNGold_41:

(Start: 7 @14735 has 7 MA's), (10, 14702), (12, 14693),

Gene: Boopy_43 Start: 14747, Stop: 14466, Start Num: 7

Candidate Starts for Boopy_43:

(Start: 7 @14747 has 7 MA's), (10, 14714), (12, 14705),

Gene: ClubL_7 Start: 1779, Stop: 1510, Start Num: 11

Candidate Starts for ClubL_7:

(4, 2124), (5, 2085), (Start: 11 @1779 has 13 MA's), (18, 1734), (25, 1653), (28, 1617),

Gene: Cucurbita_7 Start: 1779, Stop: 1510, Start Num: 11

Candidate Starts for Cucurbita_7:

(4, 2124), (5, 2085), (Start: 11 @1779 has 13 MA's), (18, 1734), (25, 1653), (28, 1617),

Gene: Culver_6 Start: 1603, Stop: 1334, Start Num: 11

Candidate Starts for Culver_6:

(1, 2167), (2, 2137), (3, 2056), (4, 1948), (5, 1909), (Start: 11 @1603 has 13 MA's), (15, 1573), (18, 1558), (25, 1477), (28, 1441),

Gene: Dusty_6 Start: 1603, Stop: 1334, Start Num: 11

Candidate Starts for Dusty_6:

(1, 2167), (2, 2137), (3, 2056), (4, 1948), (5, 1909), (Start: 11 @1603 has 13 MA's), (15, 1573), (18, 1558), (25, 1477), (28, 1441),

Gene: Engineer_7 Start: 1779, Stop: 1510, Start Num: 11

Candidate Starts for Engineer_7:

(Start: 11 @1779 has 13 MA's), (18, 1734), (25, 1653), (28, 1617),

Gene: Forza_42 Start: 14663, Stop: 14382, Start Num: 7

Candidate Starts for Forza_42:
(Start: 7 @14663 has 7 MA's), (10, 14630), (12, 14621),

Gene: Gibbles_95 Start: 69566, Stop: 69255, Start Num: 6
Candidate Starts for Gibbles_95:
(Start: 6 @69566 has 4 MA's), (Start: 7 @69560 has 7 MA's), (8, 69539), (9, 69533), (10, 69527), (21, 69437), (22, 69413), (27, 69359),

Gene: GodonK_167 Start: 85677, Stop: 85414, Start Num: 13
Candidate Starts for GodonK_167:
(Start: 13 @85677 has 1 MA's), (14, 85671), (18, 85635), (19, 85629), (20, 85626), (23, 85566), (26, 85551), (29, 85515), (30, 85473),

Gene: Kampe_96 Start: 69516, Stop: 69205, Start Num: 6
Candidate Starts for Kampe_96:
(Start: 6 @69516 has 4 MA's), (Start: 7 @69510 has 7 MA's), (9, 69483), (21, 69387), (27, 69309),

Gene: Lozinak_7 Start: 1779, Stop: 1510, Start Num: 11
Candidate Starts for Lozinak_7:
(4, 2124), (5, 2085), (Start: 11 @1779 has 13 MA's), (18, 1734), (25, 1653), (28, 1617),

Gene: Mareelih_41 Start: 14165, Stop: 13884, Start Num: 7
Candidate Starts for Mareelih_41:
(Start: 7 @14165 has 7 MA's), (10, 14132), (12, 14123),

Gene: Miskis_8 Start: 1779, Stop: 1510, Start Num: 11
Candidate Starts for Miskis_8:
(4, 2124), (5, 2085), (Start: 11 @1779 has 13 MA's), (18, 1734), (25, 1653), (28, 1617),

Gene: Norvs_7 Start: 1779, Stop: 1510, Start Num: 11
Candidate Starts for Norvs_7:
(4, 2124), (5, 2085), (Start: 11 @1779 has 13 MA's), (18, 1734), (25, 1653), (28, 1617),

Gene: OneUp_6 Start: 1509, Stop: 1234, Start Num: 11
Candidate Starts for OneUp_6:
(Start: 11 @1509 has 13 MA's), (24, 1392),

Gene: Orchid_95 Start: 69511, Stop: 69206, Start Num: 7
Candidate Starts for Orchid_95:
(Start: 6 @69517 has 4 MA's), (Start: 7 @69511 has 7 MA's), (9, 69484), (21, 69388), (27, 69310),

Gene: PatrickStar_96 Start: 69516, Stop: 69205, Start Num: 6
Candidate Starts for PatrickStar_96:
(Start: 6 @69516 has 4 MA's), (Start: 7 @69510 has 7 MA's), (9, 69483), (21, 69387), (27, 69309),

Gene: Phendrix_157 Start: 84630, Stop: 84319, Start Num: 6
Candidate Starts for Phendrix_157:
(Start: 6 @84630 has 4 MA's), (14, 84576), (16, 84552), (23, 84471), (26, 84456), (29, 84420), (30, 84378),

Gene: PhinkBoden_8 Start: 2279, Stop: 2010, Start Num: 11
Candidate Starts for PhinkBoden_8:

(1, 2843), (2, 2813), (3, 2732), (4, 2624), (5, 2585), (Start: 11 @2279 has 13 MA's), (18, 2234), (25, 2153), (28, 2117),

Gene: RobinSparkles_99 Start: 69573, Stop: 69268, Start Num: 7

Candidate Starts for RobinSparkles_99:

(Start: 6 @69579 has 4 MA's), (Start: 7 @69573 has 7 MA's), (21, 69450), (22, 69426), (27, 69372),

Gene: Sixama_41 Start: 13852, Stop: 13571, Start Num: 7

Candidate Starts for Sixama_41:

(Start: 7 @13852 has 7 MA's), (17, 13774),

Gene: Smoothie_7 Start: 1779, Stop: 1510, Start Num: 11

Candidate Starts for Smoothie_7:

(4, 2124), (5, 2085), (Start: 11 @1779 has 13 MA's), (18, 1734), (25, 1653), (28, 1617),

Gene: Toniann_7 Start: 1779, Stop: 1510, Start Num: 11

Candidate Starts for Toniann_7:

(4, 2124), (5, 2085), (Start: 11 @1779 has 13 MA's), (18, 1734), (25, 1653), (28, 1617),

Gene: WilliamBoone_6 Start: 1630, Stop: 1361, Start Num: 11

Candidate Starts for WilliamBoone_6:

(Start: 11 @1630 has 13 MA's), (18, 1585),