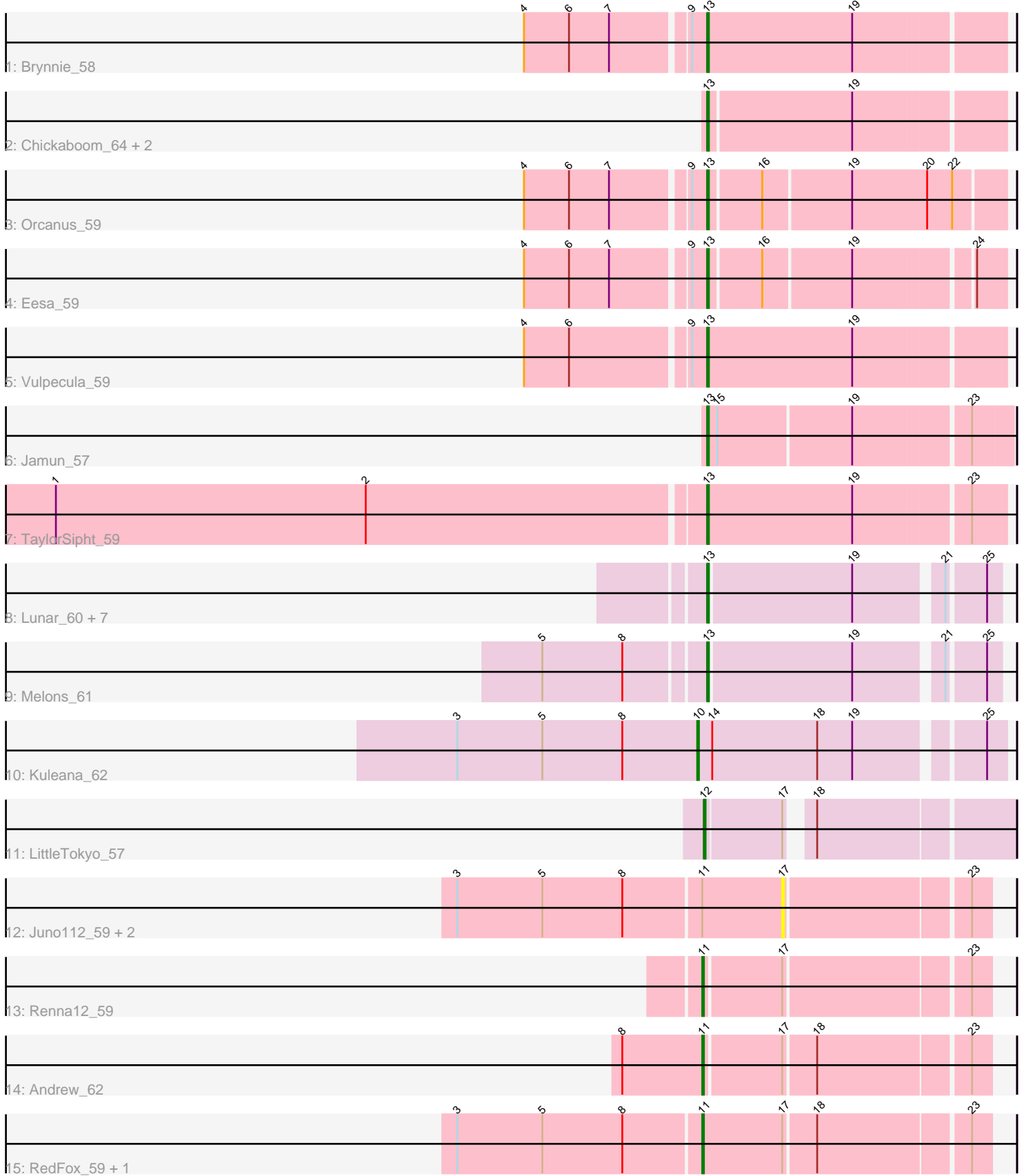


Pham 158115



Note: Tracks are now grouped by subcluster and scaled. Switching in subcluster is indicated by changes in track color. Track scale is now set by default to display the region 30 bp upstream of start 1 to 30 bp downstream of the last possible start. If this default region is judged to be packed too tightly with annotated starts, the track will be further scaled to only show that region of the ORF with annotated starts. This action will be indicated by adding "Zoomed" to the title. For starts, yellow indicates the location of called starts comprised solely of Glimmer/GeneMark auto-annotations, green indicates the location of called starts with at least 1 manual gene annotation.

Pham 158115 Report

This analysis was run 04/13/24 on database version 558.

Pham number 158115 has 27 members, 5 are drafts.

Phages represented in each track:

- Track 1 : Brynnie_58
- Track 2 : Chickaboom_64, Basilisk_59, Ruchi_58
- Track 3 : Orcanus_59
- Track 4 : Eesa_59
- Track 5 : Vulpecula_59
- Track 6 : Jamun_57
- Track 7 : TaylorSipht_59
- Track 8 : Lunar_60, Amelia_58, Coral_58, Polka_58, Daob_60, Kepler_60, HannahPhantana_67, Cote_61
- Track 9 : Melons_61
- Track 10 : Kuleana_62
- Track 11 : LittleTokyo_57
- Track 12 : Juno112_59, PhluffyCoco_59, KHumphrey_58
- Track 13 : Renna12_59
- Track 14 : Andrew_62
- Track 15 : RedFox_59, Leona_58

Summary of Final Annotations (See graph section above for start numbers):

The start number called the most often in the published annotations is 13, it was called in 16 of the 22 non-draft genes in the pham.

Genes that call this "Most Annotated" start:

- Amelia_58, Basilisk_59, Brynnie_58, Chickaboom_64, Coral_58, Cote_61, Daob_60, Eesa_59, HannahPhantana_67, Jamun_57, Kepler_60, Lunar_60, Melons_61, Orcanus_59, Polka_58, Ruchi_58, TaylorSipht_59, Vulpecula_59,

Genes that have the "Most Annotated" start but do not call it:

-

Genes that do not have the "Most Annotated" start:

- Andrew_62, Juno112_59, KHumphrey_58, Kuleana_62, Leona_58, LittleTokyo_57, PhluffyCoco_59, RedFox_59, Renna12_59,

Summary by start number:

Start 10:

- Found in 1 of 27 (3.7%) of genes in pham
- Manual Annotations of this start: 1 of 22
- Called 100.0% of time when present
- Phage (with cluster) where this start called: Kuleana_62 (AS2),

Start 11:

- Found in 7 of 27 (25.9%) of genes in pham
- Manual Annotations of this start: 4 of 22
- Called 57.1% of time when present
- Phage (with cluster) where this start called: Andrew_62 (AS3), Leona_58 (AS3), RedFox_59 (AS3), Renna12_59 (AS3),

Start 12:

- Found in 1 of 27 (3.7%) of genes in pham
- Manual Annotations of this start: 1 of 22
- Called 100.0% of time when present
- Phage (with cluster) where this start called: LittleTokyo_57 (AS2),

Start 13:

- Found in 18 of 27 (66.7%) of genes in pham
- Manual Annotations of this start: 16 of 22
- Called 100.0% of time when present
- Phage (with cluster) where this start called: Amelia_58 (AS2), Basilisk_59 (AS1), Brynnie_58 (AS1), Chickaboom_64 (AS1), Coral_58 (AS2), Cote_61 (AS2), Daob_60 (AS2), Eesa_59 (AS1), HannahPhantana_67 (AS2), Jamun_57 (AS1), Kepler_60 (AS2), Lunar_60 (AS2), Melons_61 (AS2), Orcanus_59 (AS1), Polka_58 (AS2), Ruchi_58 (AS1), TaylorSipht_59 (AS1), Vulpecula_59 (AS1),

Start 17:

- Found in 8 of 27 (29.6%) of genes in pham
- No Manual Annotations of this start.
- Called 37.5% of time when present
- Phage (with cluster) where this start called: Juno112_59 (AS3), KHumphrey_58 (AS3), PhluffyCoco_59 (AS3),

Summary by clusters:

There are 3 clusters represented in this pham: AS3, AS2, AS1,

Info for manual annotations of cluster AS1:

- Start number 13 was manually annotated 8 times for cluster AS1.

Info for manual annotations of cluster AS2:

- Start number 10 was manually annotated 1 time for cluster AS2.
- Start number 12 was manually annotated 1 time for cluster AS2.
- Start number 13 was manually annotated 8 times for cluster AS2.

Info for manual annotations of cluster AS3:

- Start number 11 was manually annotated 4 times for cluster AS3.

Gene Information:

Gene: Amelia_58 Start: 34705, Stop: 34866, Start Num: 13

Candidate Starts for Amelia_58:

(Start: 13 @34705 has 16 MA's), (19, 34789), (21, 34837), (25, 34858),

Gene: Andrew_62 Start: 36132, Stop: 36293, Start Num: 11

Candidate Starts for Andrew_62:

(8, 36084), (Start: 11 @36132 has 4 MA's), (17, 36177), (18, 36195), (23, 36282),

Gene: Basilisk_59 Start: 36355, Stop: 36525, Start Num: 13

Candidate Starts for Basilisk_59:

(Start: 13 @36355 has 16 MA's), (19, 36439),

Gene: Brynnie_58 Start: 36288, Stop: 36461, Start Num: 13

Candidate Starts for Brynnie_58:

(4, 36186), (6, 36213), (7, 36237), (9, 36279), (Start: 13 @36288 has 16 MA's), (19, 36375),

Gene: Chickaboom_64 Start: 36691, Stop: 36861, Start Num: 13

Candidate Starts for Chickaboom_64:

(Start: 13 @36691 has 16 MA's), (19, 36775),

Gene: Coral_58 Start: 34610, Stop: 34771, Start Num: 13

Candidate Starts for Coral_58:

(Start: 13 @34610 has 16 MA's), (19, 34694), (21, 34742), (25, 34763),

Gene: Cote_61 Start: 35043, Stop: 35204, Start Num: 13

Candidate Starts for Cote_61:

(Start: 13 @35043 has 16 MA's), (19, 35127), (21, 35175), (25, 35196),

Gene: Daob_60 Start: 35054, Stop: 35215, Start Num: 13

Candidate Starts for Daob_60:

(Start: 13 @35054 has 16 MA's), (19, 35138), (21, 35186), (25, 35207),

Gene: Eesa_59 Start: 37502, Stop: 37666, Start Num: 13

Candidate Starts for Eesa_59:

(4, 37400), (6, 37427), (7, 37451), (9, 37493), (Start: 13 @37502 has 16 MA's), (16, 37532), (19, 37583), (24, 37649),

Gene: HannahPhantana_67 Start: 34700, Stop: 34861, Start Num: 13

Candidate Starts for HannahPhantana_67:

(Start: 13 @34700 has 16 MA's), (19, 34784), (21, 34832), (25, 34853),

Gene: Jamun_57 Start: 36628, Stop: 36801, Start Num: 13

Candidate Starts for Jamun_57:

(Start: 13 @36628 has 16 MA's), (15, 36634), (19, 36712), (23, 36778),

Gene: Juno112_59 Start: 35654, Stop: 35770, Start Num: 17

Candidate Starts for Juno112_59:

(3, 35462), (5, 35513), (8, 35561), (Start: 11 @35606 has 4 MA's), (17, 35654), (23, 35759),

Gene: KHumphrey_58 Start: 35542, Stop: 35658, Start Num: 17
Candidate Starts for KHumphrey_58:
(3, 35350), (5, 35401), (8, 35449), (Start: 11 @35494 has 4 MA's), (17, 35542), (23, 35647),

Gene: Kepler_60 Start: 34821, Stop: 34982, Start Num: 13
Candidate Starts for Kepler_60:
(Start: 13 @34821 has 16 MA's), (19, 34905), (21, 34953), (25, 34974),

Gene: Kuleana_62 Start: 35611, Stop: 35784, Start Num: 10
Candidate Starts for Kuleana_62:
(3, 35467), (5, 35518), (8, 35566), (Start: 10 @35611 has 1 MA's), (14, 35620), (18, 35683), (19, 35704), (25, 35773),

Gene: Leona_58 Start: 35698, Stop: 35859, Start Num: 11
Candidate Starts for Leona_58:
(3, 35554), (5, 35605), (8, 35653), (Start: 11 @35698 has 4 MA's), (17, 35743), (18, 35761), (23, 35848),

Gene: LittleTokyo_57 Start: 34219, Stop: 34386, Start Num: 12
Candidate Starts for LittleTokyo_57:
(Start: 12 @34219 has 1 MA's), (17, 34264), (18, 34273),

Gene: Lunar_60 Start: 34733, Stop: 34894, Start Num: 13
Candidate Starts for Lunar_60:
(Start: 13 @34733 has 16 MA's), (19, 34817), (21, 34865), (25, 34886),

Gene: Melons_61 Start: 34888, Stop: 35049, Start Num: 13
Candidate Starts for Melons_61:
(5, 34795), (8, 34843), (Start: 13 @34888 has 16 MA's), (19, 34972), (21, 35020), (25, 35041),

Gene: Orcanus_59 Start: 36837, Stop: 37007, Start Num: 13
Candidate Starts for Orcanus_59:
(4, 36735), (6, 36762), (7, 36786), (9, 36828), (Start: 13 @36837 has 16 MA's), (16, 36867), (19, 36918), (20, 36963), (22, 36978),

Gene: PhluffyCoco_59 Start: 35753, Stop: 35869, Start Num: 17
Candidate Starts for PhluffyCoco_59:
(3, 35561), (5, 35612), (8, 35660), (Start: 11 @35705 has 4 MA's), (17, 35753), (23, 35858),

Gene: Polka_58 Start: 34555, Stop: 34716, Start Num: 13
Candidate Starts for Polka_58:
(Start: 13 @34555 has 16 MA's), (19, 34639), (21, 34687), (25, 34708),

Gene: RedFox_59 Start: 35703, Stop: 35867, Start Num: 11
Candidate Starts for RedFox_59:
(3, 35559), (5, 35610), (8, 35658), (Start: 11 @35703 has 4 MA's), (17, 35751), (18, 35769), (23, 35856),

Gene: Renna12_59 Start: 35816, Stop: 35977, Start Num: 11
Candidate Starts for Renna12_59:
(Start: 11 @35816 has 4 MA's), (17, 35861), (23, 35966),

Gene: Ruchi_58 Start: 36277, Stop: 36447, Start Num: 13

Candidate Starts for Ruchi_58:

(Start: 13 @36277 has 16 MA's), (19, 36361),

Gene: TaylorSipht_59 Start: 36450, Stop: 36623, Start Num: 13

Candidate Starts for TaylorSipht_59:

(1, 36066), (2, 36252), (Start: 13 @36450 has 16 MA's), (19, 36537), (23, 36603),

Gene: Vulpecula_59 Start: 36124, Stop: 36297, Start Num: 13

Candidate Starts for Vulpecula_59:

(4, 36022), (6, 36049), (9, 36115), (Start: 13 @36124 has 16 MA's), (19, 36211),