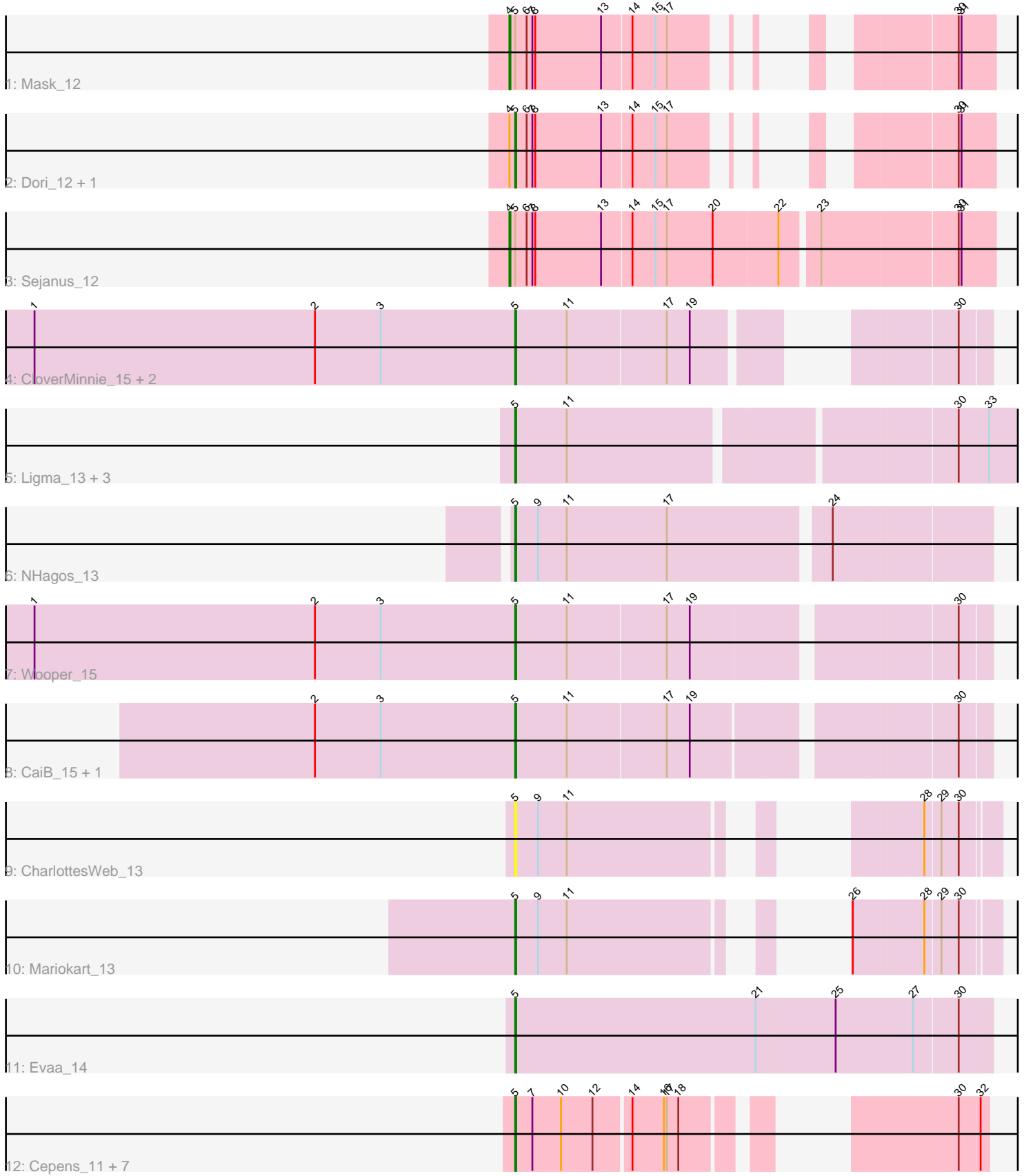


Pham 158128



Note: Tracks are now grouped by subcluster and scaled. Switching in subcluster is indicated by changes in track color. Track scale is now set by default to display the region 30 bp upstream of start 1 to 30 bp downstream of the last possible start. If this default region is judged to be packed too tightly with annotated starts, the track will be further scaled to only show that region of the ORF with annotated starts. This action will be indicated by adding "Zoomed" to the title. For starts, yellow indicates the location of called starts comprised solely of Glimmer/GeneMark auto-annotations, green indicates the location of called starts with at least 1 manual gene annotation.

Pham 158128 Report

This analysis was run 04/13/24 on database version 558.

Pham number 158128 has 26 members, 5 are drafts.

Phages represented in each track:

- Track 1 : Mask_12
- Track 2 : Dori_12, Mao1_11
- Track 3 : Sejanus_12
- Track 4 : CloverMinnie_15, MossRose_15, MakoManhole_15
- Track 5 : Ligma_13, Fresco_13, Axumite_13, Shatter_13
- Track 6 : NHagos_13
- Track 7 : Wooper_15
- Track 8 : CaiB_15, AnarQue_15
- Track 9 : CharlottesWeb_13
- Track 10 : Mariokart_13
- Track 11 : Evaa_14
- Track 12 : Cepens_11, PR_11, D12_11, Megabear_11, Jeon_11, GodPhather_12, Argie_12, Taptic_11

Summary of Final Annotations (See graph section above for start numbers):

The start number called the most often in the published annotations is 5, it was called in 19 of the 21 non-draft genes in the pham.

Genes that call this "Most Annotated" start:

- AnarQue_15, Argie_12, Axumite_13, CaiB_15, Cepens_11, CharlottesWeb_13, CloverMinnie_15, D12_11, Dori_12, Evaa_14, Fresco_13, GodPhather_12, Jeon_11, Ligma_13, MakoManhole_15, Mao1_11, Mariokart_13, Megabear_11, MossRose_15, NHagos_13, PR_11, Shatter_13, Taptic_11, Wooper_15,

Genes that have the "Most Annotated" start but do not call it:

- Mask_12, Sejanus_12,

Genes that do not have the "Most Annotated" start:

-

Summary by start number:

Start 4:

- Found in 4 of 26 (15.4%) of genes in pham
- Manual Annotations of this start: 2 of 21
- Called 50.0% of time when present
- Phage (with cluster) where this start called: Mask_12 (AD), Sejanus_12 (AD),

Start 5:

- Found in 26 of 26 (100.0%) of genes in pham
- Manual Annotations of this start: 19 of 21
- Called 92.3% of time when present
- Phage (with cluster) where this start called: AnarQue_15 (DR), Argie_12 (W), Axumite_13 (DR), CaiB_15 (DR), Cepens_11 (W), CharlottesWeb_13 (DR), CloverMinnie_15 (DR), D12_11 (W), Dori_12 (AD), Evaa_14 (DR), Fresco_13 (DR), GodPhather_12 (W), Jeon_11 (W), Ligma_13 (DR), MakoManhole_15 (DR), Mao1_11 (AD), Mariokart_13 (DR), Megabear_11 (W), MossRose_15 (DR), NHagos_13 (DR), PR_11 (W), Shatter_13 (DR), Taptic_11 (W), Wooper_15 (DR),

Summary by clusters:

There are 3 clusters represented in this pham: DR, AD, W,

Info for manual annotations of cluster AD:

- Start number 4 was manually annotated 2 times for cluster AD.
- Start number 5 was manually annotated 1 time for cluster AD.

Info for manual annotations of cluster DR:

- Start number 5 was manually annotated 10 times for cluster DR.

Info for manual annotations of cluster W:

- Start number 5 was manually annotated 8 times for cluster W.

Gene Information:

Gene: AnarQue_15 Start: 13914, Stop: 14381, Start Num: 5

Candidate Starts for AnarQue_15:

(2, 13704), (3, 13773), (Start: 5 @13914 has 19 MA's), (11, 13968), (17, 14070), (19, 14094), (30, 14349),

Gene: Argie_12 Start: 13780, Stop: 14178, Start Num: 5

Candidate Starts for Argie_12:

(Start: 5 @13780 has 19 MA's), (7, 13798), (10, 13828), (12, 13861), (14, 13897), (16, 13930), (17, 13933), (18, 13945), (30, 14149), (32, 14170),

Gene: Axumite_13 Start: 12434, Stop: 12952, Start Num: 5

Candidate Starts for Axumite_13:

(Start: 5 @12434 has 19 MA's), (11, 12488), (30, 12869), (33, 12899),

Gene: CaiB_15 Start: 13902, Stop: 14366, Start Num: 5

Candidate Starts for CaiB_15:

(2, 13692), (3, 13761), (Start: 5 @13902 has 19 MA's), (11, 13956), (17, 14058), (19, 14082), (30, 14334),

Gene: Cepens_11 Start: 13519, Stop: 13902, Start Num: 5

Candidate Starts for Cepens_11:

(Start: 5 @13519 has 19 MA's), (7, 13537), (10, 13567), (12, 13600), (14, 13636), (16, 13669), (17, 13672), (18, 13684), (30, 13873), (32, 13894),

Gene: CharlottesWeb_13 Start: 12479, Stop: 12856, Start Num: 5

Candidate Starts for CharlottesWeb_13:

(Start: 5 @12479 has 19 MA's), (9, 12503), (11, 12533), (28, 12785), (29, 12800), (30, 12818),

Gene: CloverMinnie_15 Start: 13902, Stop: 14306, Start Num: 5

Candidate Starts for CloverMinnie_15:

(1, 13398), (2, 13692), (3, 13761), (Start: 5 @13902 has 19 MA's), (11, 13956), (17, 14058), (19, 14082), (30, 14274),

Gene: D12_11 Start: 13497, Stop: 13895, Start Num: 5

Candidate Starts for D12_11:

(Start: 5 @13497 has 19 MA's), (7, 13515), (10, 13545), (12, 13578), (14, 13614), (16, 13647), (17, 13650), (18, 13662), (30, 13866), (32, 13887),

Gene: Dori_12 Start: 11226, Stop: 11591, Start Num: 5

Candidate Starts for Dori_12:

(Start: 4 @11220 has 2 MA's), (Start: 5 @11226 has 19 MA's), (6, 11238), (7, 11244), (8, 11247), (13, 11316), (14, 11346), (15, 11370), (17, 11382), (30, 11553), (31, 11556),

Gene: Evaa_14 Start: 13757, Stop: 14248, Start Num: 5

Candidate Starts for Evaa_14:

(Start: 5 @13757 has 19 MA's), (21, 14009), (25, 14090), (27, 14171), (30, 14216),

Gene: Fresco_13 Start: 12434, Stop: 12952, Start Num: 5

Candidate Starts for Fresco_13:

(Start: 5 @12434 has 19 MA's), (11, 12488), (30, 12869), (33, 12899),

Gene: GodPhather_12 Start: 13777, Stop: 14160, Start Num: 5

Candidate Starts for GodPhather_12:

(Start: 5 @13777 has 19 MA's), (7, 13795), (10, 13825), (12, 13858), (14, 13894), (16, 13927), (17, 13930), (18, 13942), (30, 14131), (32, 14152),

Gene: Jeon_11 Start: 13507, Stop: 13902, Start Num: 5

Candidate Starts for Jeon_11:

(Start: 5 @13507 has 19 MA's), (7, 13525), (10, 13555), (12, 13588), (14, 13624), (16, 13657), (17, 13660), (18, 13672), (30, 13873), (32, 13894),

Gene: Ligma_13 Start: 12434, Stop: 12952, Start Num: 5

Candidate Starts for Ligma_13:

(Start: 5 @12434 has 19 MA's), (11, 12488), (30, 12869), (33, 12899),

Gene: MakoManhole_15 Start: 13902, Stop: 14384, Start Num: 5

Candidate Starts for MakoManhole_15:

(1, 13398), (2, 13692), (3, 13761), (Start: 5 @13902 has 19 MA's), (11, 13956), (17, 14058), (19, 14082), (30, 14352),

Gene: Mao1_11 Start: 11622, Stop: 11987, Start Num: 5

Candidate Starts for Mao1_11:

(Start: 4 @11616 has 2 MA's), (Start: 5 @11622 has 19 MA's), (6, 11634), (7, 11640), (8, 11643), (13, 11712), (14, 11742), (15, 11766), (17, 11778), (30, 11949), (31, 11952),

Gene: Mariokart_13 Start: 12478, Stop: 12855, Start Num: 5

Candidate Starts for Mariokart_13:

(Start: 5 @12478 has 19 MA's), (9, 12502), (11, 12532), (26, 12712), (28, 12784), (29, 12799), (30, 12817),

Gene: Mask_12 Start: 11617, Stop: 11988, Start Num: 4

Candidate Starts for Mask_12:

(Start: 4 @11617 has 2 MA's), (Start: 5 @11623 has 19 MA's), (6, 11635), (7, 11641), (8, 11644), (13, 11713), (14, 11743), (15, 11767), (17, 11779), (30, 11950), (31, 11953),

Gene: Megabear_11 Start: 13462, Stop: 13845, Start Num: 5

Candidate Starts for Megabear_11:

(Start: 5 @13462 has 19 MA's), (7, 13480), (10, 13510), (12, 13543), (14, 13579), (16, 13612), (17, 13615), (18, 13627), (30, 13816), (32, 13837),

Gene: MossRose_15 Start: 13902, Stop: 14363, Start Num: 5

Candidate Starts for MossRose_15:

(1, 13398), (2, 13692), (3, 13761), (Start: 5 @13902 has 19 MA's), (11, 13956), (17, 14058), (19, 14082), (30, 14331),

Gene: NHagos_13 Start: 12375, Stop: 12854, Start Num: 5

Candidate Starts for NHagos_13:

(Start: 5 @12375 has 19 MA's), (9, 12399), (11, 12429), (17, 12534), (24, 12693),

Gene: PR_11 Start: 13474, Stop: 13872, Start Num: 5

Candidate Starts for PR_11:

(Start: 5 @13474 has 19 MA's), (7, 13492), (10, 13522), (12, 13555), (14, 13591), (16, 13624), (17, 13627), (18, 13639), (30, 13843), (32, 13864),

Gene: Sejanus_12 Start: 12433, Stop: 12921, Start Num: 4

Candidate Starts for Sejanus_12:

(Start: 4 @12433 has 2 MA's), (Start: 5 @12439 has 19 MA's), (6, 12451), (7, 12457), (8, 12460), (13, 12529), (14, 12559), (15, 12583), (17, 12595), (20, 12643), (22, 12709), (23, 12745), (30, 12883), (31, 12886),

Gene: Shatter_13 Start: 12434, Stop: 12952, Start Num: 5

Candidate Starts for Shatter_13:

(Start: 5 @12434 has 19 MA's), (11, 12488), (30, 12869), (33, 12899),

Gene: Taptic_11 Start: 13462, Stop: 13845, Start Num: 5

Candidate Starts for Taptic_11:

(Start: 5 @13462 has 19 MA's), (7, 13480), (10, 13510), (12, 13543), (14, 13579), (16, 13612), (17, 13615), (18, 13627), (30, 13816), (32, 13837),

Gene: Wooper_15 Start: 13905, Stop: 14372, Start Num: 5

Candidate Starts for Wooper_15:

(1, 13401), (2, 13695), (3, 13764), (Start: 5 @13905 has 19 MA's), (11, 13959), (17, 14061), (19, 14085), (30, 14340),