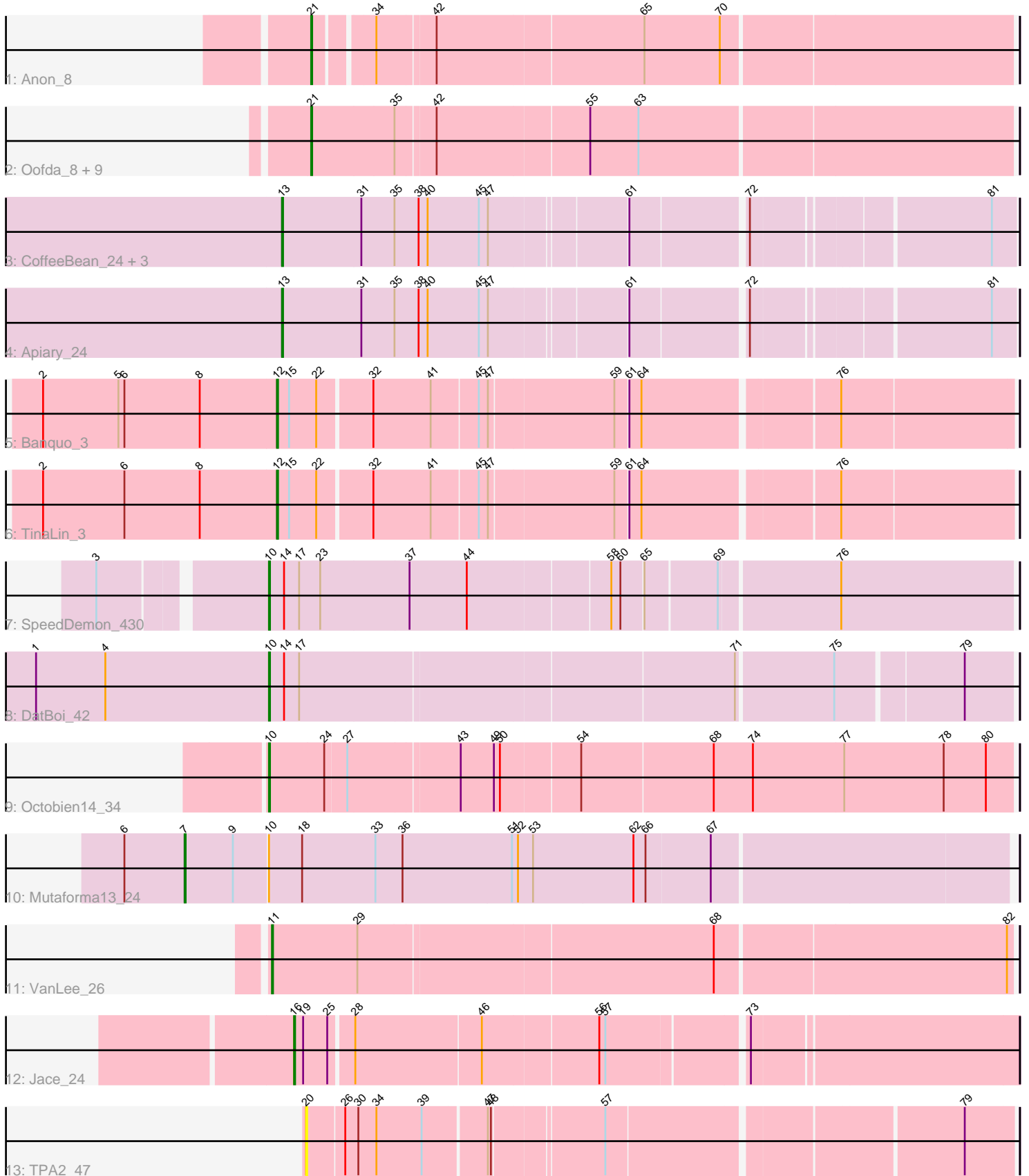


Pham 158144



Note: Tracks are now grouped by subcluster and scaled. Switching in subcluster is indicated by changes in track color. Track scale is now set by default to display the region 30 bp upstream of start 1 to 30 bp downstream of the last possible start. If this default region is judged to be packed too tightly with annotated starts, the track will be further scaled to only show that region of the ORF with annotated starts. This action will be indicated by adding "Zoomed" to the title. For starts, yellow indicates the location of called starts comprised solely of Glimmer/GeneMark auto-annotations, green indicates the location of called starts with at least 1 manual gene annotation.

Pham 158144 Report

This analysis was run 04/13/24 on database version 558.

Pham number 158144 has 25 members, 3 are drafts.

Phages represented in each track:

- Track 1 : Anon_8
- Track 2 : Oofda_8, ShayRa_9, Switzerland_8, Battleship_9, DekHockey33_8, Rosalind_8, Soups_8, Waits_8, KatherineG_8, MinecraftSteve_9
- Track 3 : CoffeeBean_24, Braxoaddie_24, Polyuyuki_24, Maselop_24
- Track 4 : Apiary_24
- Track 5 : Banquo_3
- Track 6 : TinaLin_3
- Track 7 : SpeedDemon_430
- Track 8 : DatBoi_42
- Track 9 : Octobien14_34
- Track 10 : Mutaforma13_24
- Track 11 : VanLee_26
- Track 12 : Jace_24
- Track 13 : TPA2_47

Summary of Final Annotations (See graph section above for start numbers):

The start number called the most often in the published annotations is 21, it was called in 10 of the 22 non-draft genes in the pham.

Genes that call this "Most Annotated" start:

- Anon_8, Battleship_9, DekHockey33_8, KatherineG_8, MinecraftSteve_9, Oofda_8, Rosalind_8, ShayRa_9, Soups_8, Switzerland_8, Waits_8,

Genes that have the "Most Annotated" start but do not call it:

-

Genes that do not have the "Most Annotated" start:

- Apiary_24, Banquo_3, Braxoaddie_24, CoffeeBean_24, DatBoi_42, Jace_24, Maselop_24, Mutaforma13_24, Octobien14_34, Polyuyuki_24, SpeedDemon_430, TPA2_47, TinaLin_3, VanLee_26,

Summary by start number:

Start 7:

- Found in 1 of 25 (4.0%) of genes in pham
- Manual Annotations of this start: 1 of 22
- Called 100.0% of time when present
- Phage (with cluster) where this start called: Mutaforma13_24 (F1),

Start 10:

- Found in 4 of 25 (16.0%) of genes in pham
- Manual Annotations of this start: 3 of 22
- Called 75.0% of time when present
- Phage (with cluster) where this start called: DatBoi_42 (DL), Octobien14_34 (DU1), SpeedDemon_430 (DL),

Start 11:

- Found in 1 of 25 (4.0%) of genes in pham
- Manual Annotations of this start: 1 of 22
- Called 100.0% of time when present
- Phage (with cluster) where this start called: VanLee_26 (singleton),

Start 12:

- Found in 2 of 25 (8.0%) of genes in pham
- Manual Annotations of this start: 2 of 22
- Called 100.0% of time when present
- Phage (with cluster) where this start called: Banquo_3 (CU1), TinaLin_3 (CU1),

Start 13:

- Found in 5 of 25 (20.0%) of genes in pham
- Manual Annotations of this start: 4 of 22
- Called 100.0% of time when present
- Phage (with cluster) where this start called: Apiary_24 (CR), Braxoaddie_24 (CR), CoffeeBean_24 (CR), Maselop_24 (CR), Polyuyuki_24 (CR),

Start 16:

- Found in 1 of 25 (4.0%) of genes in pham
- Manual Annotations of this start: 1 of 22
- Called 100.0% of time when present
- Phage (with cluster) where this start called: Jace_24 (singleton),

Start 20:

- Found in 1 of 25 (4.0%) of genes in pham
- No Manual Annotations of this start.
- Called 100.0% of time when present
- Phage (with cluster) where this start called: TPA2_47 (singleton),

Start 21:

- Found in 11 of 25 (44.0%) of genes in pham
- Manual Annotations of this start: 10 of 22
- Called 100.0% of time when present
- Phage (with cluster) where this start called: Anon_8 (A15), Battleship_9 (A15), DekHockey33_8 (A15), KatherineG_8 (A15), MinecraftSteve_9 (A15), Oofda_8 (A15), Rosalind_8 (A15), ShayRa_9 (A15), Soups_8 (A15), Switzerland_8 (A15), Waits_8 (A15),

Summary by clusters:

There are 7 clusters represented in this pham: A15, F1, singleton, CU1, DL, DU1, CR,

Info for manual annotations of cluster A15:

- Start number 21 was manually annotated 10 times for cluster A15.

Info for manual annotations of cluster CR:

- Start number 13 was manually annotated 4 times for cluster CR.

Info for manual annotations of cluster CU1:

- Start number 12 was manually annotated 2 times for cluster CU1.

Info for manual annotations of cluster DL:

- Start number 10 was manually annotated 2 times for cluster DL.

Info for manual annotations of cluster DU1:

- Start number 10 was manually annotated 1 time for cluster DU1.

Info for manual annotations of cluster F1:

- Start number 7 was manually annotated 1 time for cluster F1.

Gene Information:

Gene: Anon_8 Start: 4936, Stop: 5598, Start Num: 21

Candidate Starts for Anon_8:

(Start: 21 @4936 has 10 MA's), (34, 4987), (42, 5041), (65, 5242), (70, 5317),

Gene: Apiary_24 Start: 12634, Stop: 13311, Start Num: 13

Candidate Starts for Apiary_24:

(Start: 13 @12634 has 4 MA's), (31, 12712), (35, 12745), (38, 12769), (40, 12778), (45, 12829), (47, 12838), (61, 12964), (72, 13072), (81, 13288),

Gene: Banquo_3 Start: 665, Stop: 1360, Start Num: 12

Candidate Starts for Banquo_3:

(2, 434), (5, 509), (6, 515), (8, 590), (Start: 12 @665 has 2 MA's), (15, 677), (22, 704), (32, 755), (41, 812), (45, 857), (47, 866), (59, 986), (61, 998), (64, 1010), (76, 1193),

Gene: Battleship_9 Start: 4550, Stop: 5224, Start Num: 21

Candidate Starts for Battleship_9:

(Start: 21 @4550 has 10 MA's), (35, 4631), (42, 4667), (55, 4814), (63, 4862),

Gene: Braxoaddie_24 Start: 12622, Stop: 13299, Start Num: 13

Candidate Starts for Braxoaddie_24:

(Start: 13 @12622 has 4 MA's), (31, 12700), (35, 12733), (38, 12757), (40, 12766), (45, 12817), (47, 12826), (61, 12952), (72, 13060), (81, 13276),

Gene: CoffeeBean_24 Start: 12577, Stop: 13254, Start Num: 13

Candidate Starts for CoffeeBean_24:

(Start: 13 @12577 has 4 MA's), (31, 12655), (35, 12688), (38, 12712), (40, 12721), (45, 12772), (47, 12781), (61, 12907), (72, 13015), (81, 13231),

Gene: DatBoi_42 Start: 38878, Stop: 39585, Start Num: 10

Candidate Starts for DatBoi_42:

(1, 38647), (4, 38716), (Start: 10 @38878 has 3 MA's), (14, 38893), (17, 38908), (71, 39325), (75, 39418), (79, 39538),

Gene: DekHockey33_8 Start: 4550, Stop: 5224, Start Num: 21

Candidate Starts for DekHockey33_8:

(Start: 21 @4550 has 10 MA's), (35, 4631), (42, 4667), (55, 4814), (63, 4862),

Gene: Jace_24 Start: 20590, Stop: 21267, Start Num: 16

Candidate Starts for Jace_24:

(Start: 16 @20590 has 1 MA's), (19, 20599), (25, 20623), (28, 20644), (46, 20767), (56, 20878), (57, 20884), (73, 21013),

Gene: KatherineG_8 Start: 4550, Stop: 5224, Start Num: 21

Candidate Starts for KatherineG_8:

(Start: 21 @4550 has 10 MA's), (35, 4631), (42, 4667), (55, 4814), (63, 4862),

Gene: Maselop_24 Start: 12653, Stop: 13330, Start Num: 13

Candidate Starts for Maselop_24:

(Start: 13 @12653 has 4 MA's), (31, 12731), (35, 12764), (38, 12788), (40, 12797), (45, 12848), (47, 12857), (61, 12983), (72, 13091), (81, 13307),

Gene: MinecraftSteve_9 Start: 4550, Stop: 5224, Start Num: 21

Candidate Starts for MinecraftSteve_9:

(Start: 21 @4550 has 10 MA's), (35, 4631), (42, 4667), (55, 4814), (63, 4862),

Gene: Mutaforma13_24 Start: 24312, Stop: 25115, Start Num: 7

Candidate Starts for Mutaforma13_24:

(6, 24252), (Start: 7 @24312 has 1 MA's), (9, 24360), (Start: 10 @24393 has 3 MA's), (18, 24426), (33, 24498), (36, 24525), (51, 24633), (52, 24639), (53, 24654), (62, 24753), (66, 24765), (67, 24828),

Gene: Octobien14_34 Start: 28125, Stop: 28844, Start Num: 10

Candidate Starts for Octobien14_34:

(Start: 10 @28125 has 3 MA's), (24, 28179), (27, 28200), (43, 28305), (49, 28338), (50, 28344), (54, 28419), (68, 28548), (74, 28587), (77, 28677), (78, 28776), (80, 28818),

Gene: Oofda_8 Start: 4406, Stop: 5080, Start Num: 21

Candidate Starts for Oofda_8:

(Start: 21 @4406 has 10 MA's), (35, 4487), (42, 4523), (55, 4670), (63, 4718),

Gene: Polyzuki_24 Start: 12645, Stop: 13322, Start Num: 13

Candidate Starts for Polyzuki_24:

(Start: 13 @12645 has 4 MA's), (31, 12723), (35, 12756), (38, 12780), (40, 12789), (45, 12840), (47, 12849), (61, 12975), (72, 13083), (81, 13299),

Gene: Rosalind_8 Start: 4550, Stop: 5224, Start Num: 21

Candidate Starts for Rosalind_8:

(Start: 21 @4550 has 10 MA's), (35, 4631), (42, 4667), (55, 4814), (63, 4862),

Gene: ShayRa_9 Start: 4550, Stop: 5224, Start Num: 21

Candidate Starts for ShayRa_9:

(Start: 21 @4550 has 10 MA's), (35, 4631), (42, 4667), (55, 4814), (63, 4862),

Gene: Soups_8 Start: 4550, Stop: 5224, Start Num: 21

Candidate Starts for Soups_8:

(Start: 21 @4550 has 10 MA's), (35, 4631), (42, 4667), (55, 4814), (63, 4862),

Gene: SpeedDemon_430 Start: 40514, Stop: 41227, Start Num: 10

Candidate Starts for SpeedDemon_430:

(3, 40364), (Start: 10 @40514 has 3 MA's), (14, 40529), (17, 40544), (23, 40565), (37, 40652), (44, 40709), (58, 40844), (60, 40853), (65, 40874), (69, 40943), (76, 41057),

Gene: Switzerland_8 Start: 4550, Stop: 5224, Start Num: 21

Candidate Starts for Switzerland_8:

(Start: 21 @4550 has 10 MA's), (35, 4631), (42, 4667), (55, 4814), (63, 4862),

Gene: TPA2_47 Start: 36929, Stop: 37582, Start Num: 20

Candidate Starts for TPA2_47:

(20, 36929), (26, 36965), (30, 36977), (34, 36995), (39, 37040), (47, 37100), (48, 37103), (57, 37205), (79, 37535),

Gene: TinaLin_3 Start: 665, Stop: 1360, Start Num: 12

Candidate Starts for TinaLin_3:

(2, 434), (6, 515), (8, 590), (Start: 12 @665 has 2 MA's), (15, 677), (22, 704), (32, 755), (41, 812), (45, 857), (47, 866), (59, 986), (61, 998), (64, 1010), (76, 1193),

Gene: VanLee_26 Start: 22797, Stop: 23510, Start Num: 11

Candidate Starts for VanLee_26:

(Start: 11 @22797 has 1 MA's), (29, 22881), (68, 23223), (82, 23505),

Gene: Waits_8 Start: 4402, Stop: 5076, Start Num: 21

Candidate Starts for Waits_8:

(Start: 21 @4402 has 10 MA's), (35, 4483), (42, 4519), (55, 4666), (63, 4714),