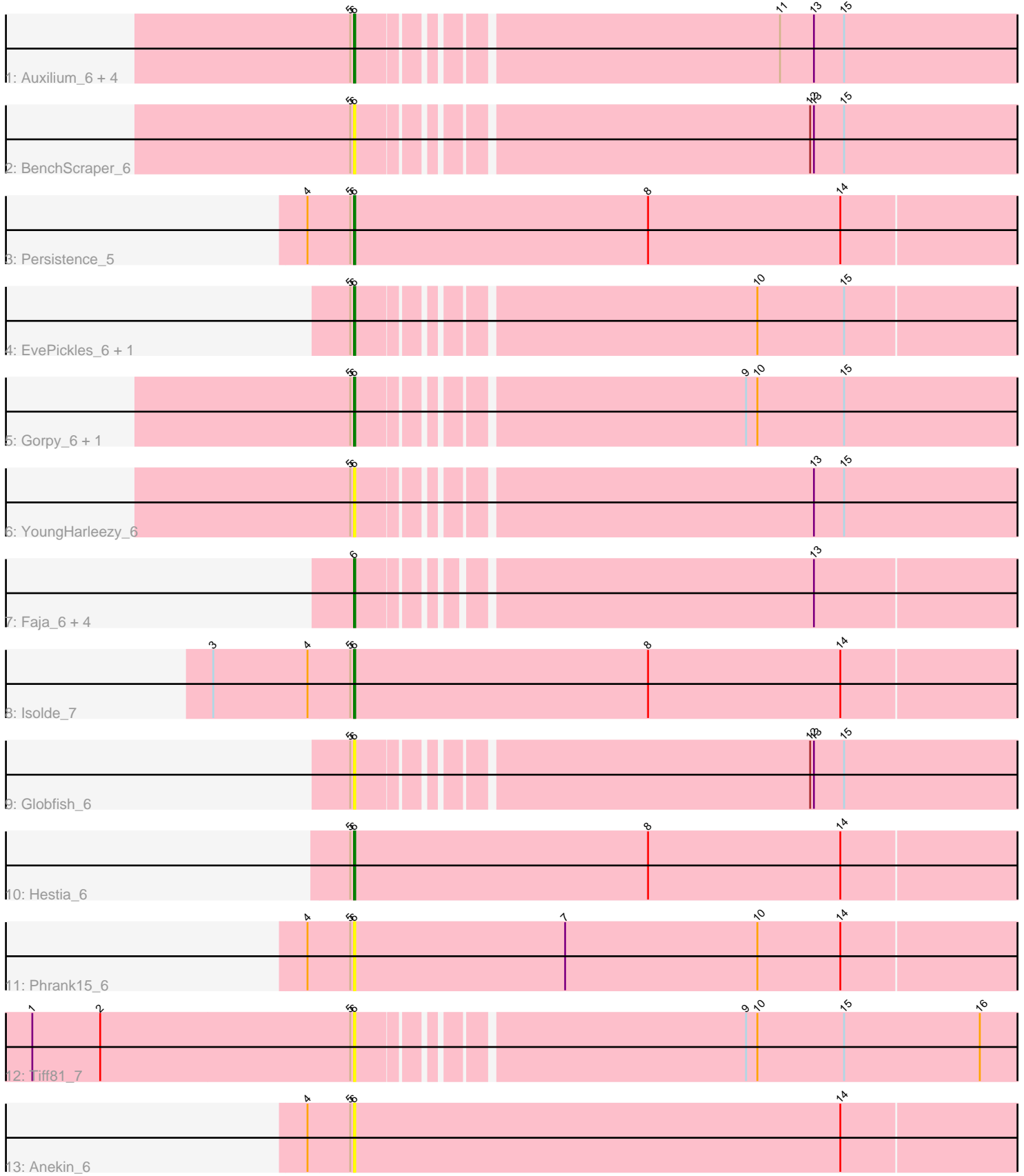


# Pham 158156



Note: Tracks are now grouped by subcluster and scaled. Switching in subcluster is indicated by changes in track color. Track scale is now set by default to display the region 30 bp upstream of start 1 to 30 bp downstream of the last possible start. If this default region is judged to be packed too tightly with annotated starts, the track will be further scaled to only show that region of the ORF with annotated starts. This action will be indicated by adding "Zoomed" to the title. For starts, yellow indicates the location of called starts comprised solely of Glimmer/GeneMark auto-annotations, green indicates the location of called starts with at least 1 manual gene annotation.

## Pham 158156 Report

This analysis was run 04/13/24 on database version 558.

Pham number 158156 has 23 members, 12 are drafts.

Phages represented in each track:

- Track 1 : Auxilium\_6, Richie\_6, BillyTP\_6, Raphaella\_6, CookieBear\_6
- Track 2 : BenchScraper\_6
- Track 3 : Persistence\_5
- Track 4 : EvePickles\_6, Sashimi\_7
- Track 5 : Gorpy\_6, Sakai\_6
- Track 6 : YoungHarleezy\_6
- Track 7 : Faja\_6, MidnightRain\_6, RadFad\_6, Aikyam\_6, Hillester\_6
- Track 8 : Isolde\_7
- Track 9 : Globfish\_6
- Track 10 : Hestia\_6
- Track 11 : Phrank15\_6
- Track 12 : Tiff81\_7
- Track 13 : Anekin\_6

### ***Summary of Final Annotations (See graph section above for start numbers):***

The start number called the most often in the published annotations is 6, it was called in 11 of the 11 non-draft genes in the pham.

Genes that call this "Most Annotated" start:

- Aikyam\_6, Anekin\_6, Auxilium\_6, BenchScraper\_6, BillyTP\_6, CookieBear\_6, EvePickles\_6, Faja\_6, Globfish\_6, Gorpy\_6, Hestia\_6, Hillester\_6, Isolde\_7, MidnightRain\_6, Persistence\_5, Phrank15\_6, RadFad\_6, Raphaella\_6, Richie\_6, Sakai\_6, Sashimi\_7, Tiff81\_7, YoungHarleezy\_6,

Genes that have the "Most Annotated" start but do not call it:

- 

Genes that do not have the "Most Annotated" start:

- 

### **Summary by start number:**

Start 6:

- Found in 23 of 23 ( 100.0% ) of genes in pham
- Manual Annotations of this start: 11 of 11
- Called 100.0% of time when present
- Phage (with cluster) where this start called: Aikyam\_6 (AY), Anekin\_6 (AY), Auxilium\_6 (AY), BenchScraper\_6 (AY), BillyTP\_6 (AY), CookieBear\_6 (AY), EvePickles\_6 (AY), Faja\_6 (AY), Globfish\_6 (AY), Gorpy\_6 (AY), Hestia\_6 (AY), Hillester\_6 (AY), Isolde\_7 (AY), MidnightRain\_6 (AY), Persistence\_5 (AY), Phrank15\_6 (AY), RadFad\_6 (AY), Raphaella\_6 (AY), Richie\_6 (AY), Sakai\_6 (AY), Sashimi\_7 (AY), Tiff81\_7 (AY), YoungHarleezy\_6 (AY),

### **Summary by clusters:**

There is one cluster represented in this pham: AY

Info for manual annotations of cluster AY:

- Start number 6 was manually annotated 11 times for cluster AY.

### **Gene Information:**

Gene: Aikyam\_6 Start: 4944, Stop: 5444, Start Num: 6

Candidate Starts for Aikyam\_6:

(Start: 6 @4944 has 11 MA's), (13, 5277),

Gene: Anekin\_6 Start: 5066, Stop: 5599, Start Num: 6

Candidate Starts for Anekin\_6:

(4, 5030), (5, 5063), (Start: 6 @5066 has 11 MA's), (14, 5453),

Gene: Auxilium\_6 Start: 4952, Stop: 5458, Start Num: 6

Candidate Starts for Auxilium\_6:

(5, 4949), (Start: 6 @4952 has 11 MA's), (11, 5261), (13, 5288), (15, 5312),

Gene: BenchScraper\_6 Start: 4952, Stop: 5458, Start Num: 6

Candidate Starts for BenchScraper\_6:

(5, 4949), (Start: 6 @4952 has 11 MA's), (12, 5285), (13, 5288), (15, 5312),

Gene: BillyTP\_6 Start: 4946, Stop: 5452, Start Num: 6

Candidate Starts for BillyTP\_6:

(5, 4943), (Start: 6 @4946 has 11 MA's), (11, 5255), (13, 5282), (15, 5306),

Gene: CookieBear\_6 Start: 4952, Stop: 5458, Start Num: 6

Candidate Starts for CookieBear\_6:

(5, 4949), (Start: 6 @4952 has 11 MA's), (11, 5261), (13, 5288), (15, 5312),

Gene: EvePickles\_6 Start: 4997, Stop: 5500, Start Num: 6

Candidate Starts for EvePickles\_6:

(5, 4994), (Start: 6 @4997 has 11 MA's), (10, 5288), (15, 5357),

Gene: Faja\_6 Start: 4944, Stop: 5444, Start Num: 6

Candidate Starts for Faja\_6:

(Start: 6 @4944 has 11 MA's), (13, 5277),

Gene: Globfish\_6 Start: 4997, Stop: 5503, Start Num: 6  
Candidate Starts for Globfish\_6:  
(5, 4994), (Start: 6 @4997 has 11 MA's), (12, 5330), (13, 5333), (15, 5357),

Gene: Gorpy\_6 Start: 4946, Stop: 5452, Start Num: 6  
Candidate Starts for Gorpy\_6:  
(5, 4943), (Start: 6 @4946 has 11 MA's), (9, 5228), (10, 5237), (15, 5306),

Gene: Hestia\_6 Start: 5060, Stop: 5593, Start Num: 6  
Candidate Starts for Hestia\_6:  
(5, 5057), (Start: 6 @5060 has 11 MA's), (8, 5294), (14, 5447),

Gene: Hillester\_6 Start: 4944, Stop: 5447, Start Num: 6  
Candidate Starts for Hillester\_6:  
(Start: 6 @4944 has 11 MA's), (13, 5277),

Gene: Isolde\_7 Start: 4984, Stop: 5517, Start Num: 6  
Candidate Starts for Isolde\_7:  
(3, 4873), (4, 4948), (5, 4981), (Start: 6 @4984 has 11 MA's), (8, 5218), (14, 5371),

Gene: MidnightRain\_6 Start: 4944, Stop: 5447, Start Num: 6  
Candidate Starts for MidnightRain\_6:  
(Start: 6 @4944 has 11 MA's), (13, 5277),

Gene: Persistence\_5 Start: 5021, Stop: 5554, Start Num: 6  
Candidate Starts for Persistence\_5:  
(4, 4985), (5, 5018), (Start: 6 @5021 has 11 MA's), (8, 5255), (14, 5408),

Gene: Phrank15\_6 Start: 5067, Stop: 5600, Start Num: 6  
Candidate Starts for Phrank15\_6:  
(4, 5031), (5, 5064), (Start: 6 @5067 has 11 MA's), (7, 5235), (10, 5388), (14, 5454),

Gene: RadFad\_6 Start: 4944, Stop: 5447, Start Num: 6  
Candidate Starts for RadFad\_6:  
(Start: 6 @4944 has 11 MA's), (13, 5277),

Gene: Raphaella\_6 Start: 4952, Stop: 5458, Start Num: 6  
Candidate Starts for Raphaella\_6:  
(5, 4949), (Start: 6 @4952 has 11 MA's), (11, 5261), (13, 5288), (15, 5312),

Gene: Richie\_6 Start: 4952, Stop: 5458, Start Num: 6  
Candidate Starts for Richie\_6:  
(5, 4949), (Start: 6 @4952 has 11 MA's), (11, 5261), (13, 5288), (15, 5312),

Gene: Sakai\_6 Start: 4946, Stop: 5452, Start Num: 6  
Candidate Starts for Sakai\_6:  
(5, 4943), (Start: 6 @4946 has 11 MA's), (9, 5228), (10, 5237), (15, 5306),

Gene: Sashimi\_7 Start: 5113, Stop: 5619, Start Num: 6  
Candidate Starts for Sashimi\_7:  
(5, 5110), (Start: 6 @5113 has 11 MA's), (10, 5404), (15, 5473),

Gene: Tiff81\_7 Start: 5109, Stop: 5615, Start Num: 6

Candidate Starts for Tiff81\_7:

(1, 4854), (2, 4908), (5, 5106), (Start: 6 @5109 has 11 MA's), (9, 5391), (10, 5400), (15, 5469), (16, 5577),

Gene: YoungHarleezy\_6 Start: 4950, Stop: 5456, Start Num: 6

Candidate Starts for YoungHarleezy\_6:

(5, 4947), (Start: 6 @4950 has 11 MA's), (13, 5286), (15, 5310),