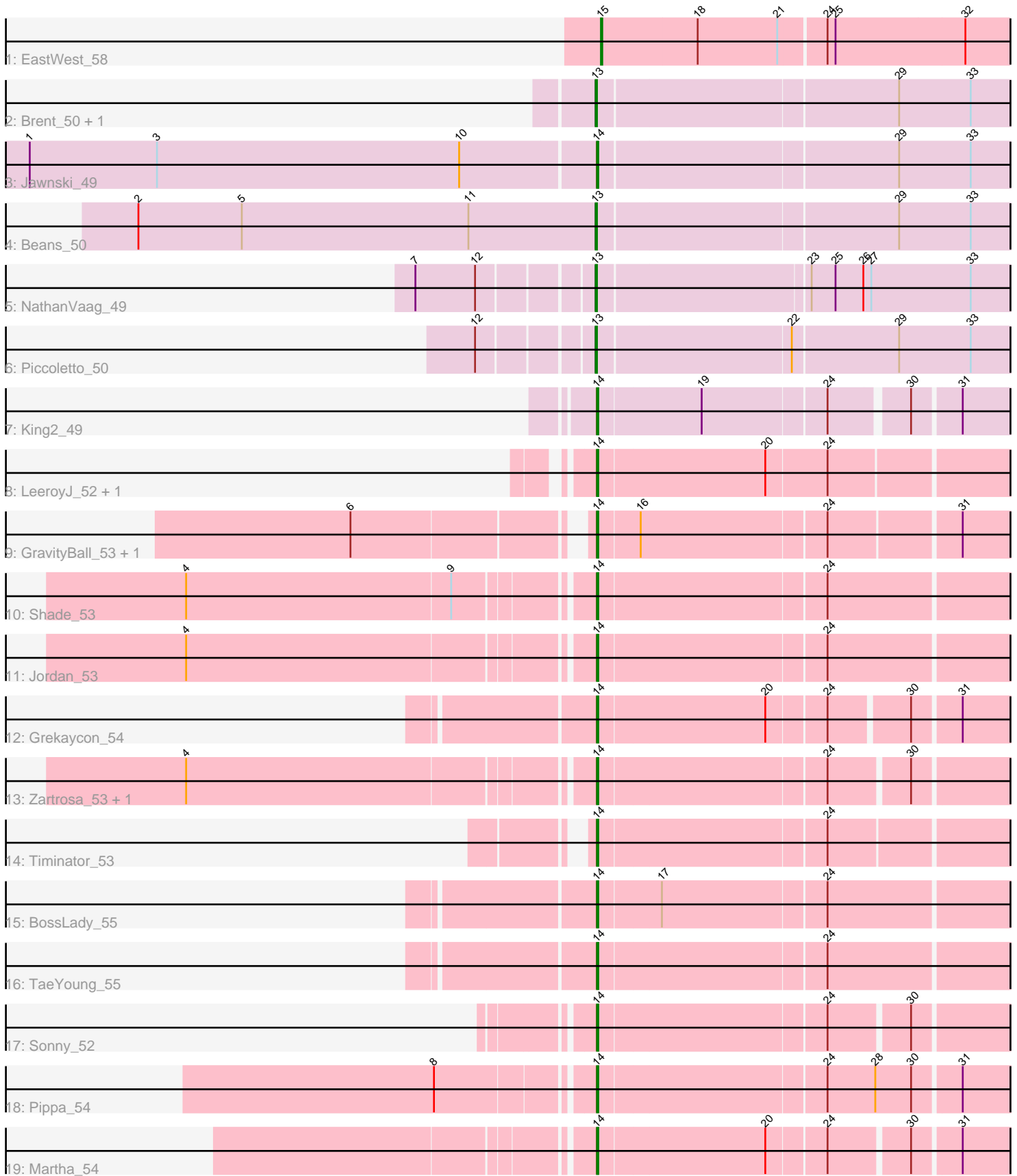


Pham 158158



Note: Tracks are now grouped by subcluster and scaled. Switching in subcluster is indicated by changes in track color. Track scale is now set by default to display the region 30 bp upstream of start 1 to 30 bp downstream of the last possible start. If this default region is judged to be packed too tightly with annotated starts, the track will be further scaled to only show that region of the ORF with annotated starts. This action will be indicated by adding "Zoomed" to the title. For starts, yellow indicates the location of called starts comprised solely of Glimmer/GeneMark auto-annotations, green indicates the location of called starts with at least 1 manual gene annotation.

Pham 158158 Report

This analysis was run 04/13/24 on database version 558.

Pham number 158158 has 23 members, 1 are drafts.

Phages represented in each track:

- Track 1 : EastWest_58
- Track 2 : Brent_50, Franzy_50
- Track 3 : Jawnski_49
- Track 4 : Beans_50
- Track 5 : NathanVaag_49
- Track 6 : Piccoletto_50
- Track 7 : King2_49
- Track 8 : LeeroyJ_52, BarretLemon_52
- Track 9 : GravityBall_53, StevieBAY_53
- Track 10 : Shade_53
- Track 11 : Jordan_53
- Track 12 : Grekaycon_54
- Track 13 : Zartrosa_53, JKerns_53
- Track 14 : Timinator_53
- Track 15 : BossLady_55
- Track 16 : TaeYoung_55
- Track 17 : Sonny_52
- Track 18 : Pippa_54
- Track 19 : Martha_54

Summary of Final Annotations (See graph section above for start numbers):

The start number called the most often in the published annotations is 14, it was called in 16 of the 22 non-draft genes in the pham.

Genes that call this "Most Annotated" start:

- BarretLemon_52, BossLady_55, GravityBall_53, Grekaycon_54, JKerns_53, Jawnski_49, Jordan_53, King2_49, LeeroyJ_52, Martha_54, Pippa_54, Shade_53, Sonny_52, StevieBAY_53, TaeYoung_55, Timinator_53, Zartrosa_53,

Genes that have the "Most Annotated" start but do not call it:

-

Genes that do not have the "Most Annotated" start:

- Beans_50, Brent_50, EastWest_58, Franzy_50, NathanVaag_49, Piccoletto_50,

Summary by start number:

Start 13:

- Found in 5 of 23 (21.7%) of genes in pham
- Manual Annotations of this start: 5 of 22
- Called 100.0% of time when present
- Phage (with cluster) where this start called: Beans_50 (AO1), Brent_50 (AO1), Franzy_50 (AO1), NathanVaag_49 (AO1), Piccoletto_50 (AO1),

Start 14:

- Found in 17 of 23 (73.9%) of genes in pham
- Manual Annotations of this start: 16 of 22
- Called 100.0% of time when present
- Phage (with cluster) where this start called: BarretLemon_52 (AO2), BossLady_55 (AO2), GravityBall_53 (AO2), Grekaycon_54 (AO2), JKerns_53 (AO2), Jawnski_49 (AO1), Jordan_53 (AO2), King2_49 (AO1), LeeroyJ_52 (AO2), Martha_54 (AO2), Pippa_54 (AO2), Shade_53 (AO2), Sonny_52 (AO2), StevieBAY_53 (AO2), TaeYoung_55 (AO2), Timinator_53 (AO2), Zartrosa_53 (AO2),

Start 15:

- Found in 1 of 23 (4.3%) of genes in pham
- Manual Annotations of this start: 1 of 22
- Called 100.0% of time when present
- Phage (with cluster) where this start called: EastWest_58 (AO),

Summary by clusters:

There are 3 clusters represented in this pham: AO, AO2, AO1,

Info for manual annotations of cluster AO:

- Start number 15 was manually annotated 1 time for cluster AO.

Info for manual annotations of cluster AO1:

- Start number 13 was manually annotated 5 times for cluster AO1.
- Start number 14 was manually annotated 2 times for cluster AO1.

Info for manual annotations of cluster AO2:

- Start number 14 was manually annotated 14 times for cluster AO2.

Gene Information:

Gene: BarretLemon_52 Start: 37854, Stop: 38150, Start Num: 14

Candidate Starts for BarretLemon_52:

(Start: 14 @37854 has 16 MA's), (20, 37977), (24, 38022),

Gene: Beans_50 Start: 37744, Stop: 38049, Start Num: 13

Candidate Starts for Beans_50:

(2, 37399), (5, 37477), (11, 37648), (Start: 13 @37744 has 5 MA's), (29, 37963), (33, 38017),

Gene: BossLady_55 Start: 38508, Stop: 38804, Start Num: 14

Candidate Starts for BossLady_55:

(Start: 14 @38508 has 16 MA's), (17, 38553), (24, 38673),

Gene: Brent_50 Start: 38026, Stop: 38331, Start Num: 13

Candidate Starts for Brent_50:

(Start: 13 @38026 has 5 MA's), (29, 38245), (33, 38299),

Gene: EastWest_58 Start: 38271, Stop: 38570, Start Num: 15

Candidate Starts for EastWest_58:

(Start: 15 @38271 has 1 MA's), (18, 38343), (21, 38403), (24, 38436), (25, 38442), (32, 38538),

Gene: Franzy_50 Start: 38042, Stop: 38347, Start Num: 13

Candidate Starts for Franzy_50:

(Start: 13 @38042 has 5 MA's), (29, 38261), (33, 38315),

Gene: GravityBall_53 Start: 38308, Stop: 38601, Start Num: 14

Candidate Starts for GravityBall_53:

(6, 38149), (Start: 14 @38308 has 16 MA's), (16, 38338), (24, 38473), (31, 38566),

Gene: Grekaycon_54 Start: 38407, Stop: 38697, Start Num: 14

Candidate Starts for Grekaycon_54:

(Start: 14 @38407 has 16 MA's), (20, 38530), (24, 38572), (30, 38629), (31, 38662),

Gene: JKerns_53 Start: 38481, Stop: 38771, Start Num: 14

Candidate Starts for JKerns_53:

(4, 38190), (Start: 14 @38481 has 16 MA's), (24, 38646), (30, 38703),

Gene: Jawnski_49 Start: 37551, Stop: 37856, Start Num: 14

Candidate Starts for Jawnski_49:

(1, 37128), (3, 37224), (10, 37452), (Start: 14 @37551 has 16 MA's), (29, 37770), (33, 37824),

Gene: Jordan_53 Start: 38284, Stop: 38580, Start Num: 14

Candidate Starts for Jordan_53:

(4, 37993), (Start: 14 @38284 has 16 MA's), (24, 38449),

Gene: King2_49 Start: 37956, Stop: 38243, Start Num: 14

Candidate Starts for King2_49:

(Start: 14 @37956 has 16 MA's), (19, 38031), (24, 38121), (30, 38175), (31, 38208),

Gene: LeeroyJ_52 Start: 37883, Stop: 38179, Start Num: 14

Candidate Starts for LeeroyJ_52:

(Start: 14 @37883 has 16 MA's), (20, 38006), (24, 38051),

Gene: Martha_54 Start: 38509, Stop: 38799, Start Num: 14

Candidate Starts for Martha_54:

(Start: 14 @38509 has 16 MA's), (20, 38632), (24, 38674), (30, 38731), (31, 38764),

Gene: NathanVaag_49 Start: 37569, Stop: 37871, Start Num: 13

Candidate Starts for NathanVaag_49:

(7, 37446), (12, 37491), (Start: 13 @37569 has 5 MA's), (23, 37722), (25, 37740), (26, 37761), (27, 37767), (33, 37842),

Gene: Piccoletto_50 Start: 37761, Stop: 38066, Start Num: 13

Candidate Starts for Piccoletto_50:

(12, 37683), (Start: 13 @37761 has 5 MA's), (22, 37902), (29, 37980), (33, 38034),

Gene: Pippa_54 Start: 38395, Stop: 38691, Start Num: 14

Candidate Starts for Pippa_54:

(8, 38287), (Start: 14 @38395 has 16 MA's), (24, 38560), (28, 38596), (30, 38623), (31, 38656),

Gene: Shade_53 Start: 38209, Stop: 38505, Start Num: 14

Candidate Starts for Shade_53:

(4, 37918), (9, 38116), (Start: 14 @38209 has 16 MA's), (24, 38374),

Gene: Sonny_52 Start: 37959, Stop: 38249, Start Num: 14

Candidate Starts for Sonny_52:

(Start: 14 @37959 has 16 MA's), (24, 38124), (30, 38181),

Gene: StevieBAY_53 Start: 38305, Stop: 38598, Start Num: 14

Candidate Starts for StevieBAY_53:

(6, 38146), (Start: 14 @38305 has 16 MA's), (16, 38335), (24, 38470), (31, 38563),

Gene: TaeYoung_55 Start: 38476, Stop: 38772, Start Num: 14

Candidate Starts for TaeYoung_55:

(Start: 14 @38476 has 16 MA's), (24, 38641),

Gene: Timinator_53 Start: 38174, Stop: 38467, Start Num: 14

Candidate Starts for Timinator_53:

(Start: 14 @38174 has 16 MA's), (24, 38339),

Gene: Zartrosa_53 Start: 38260, Stop: 38550, Start Num: 14

Candidate Starts for Zartrosa_53:

(4, 37969), (Start: 14 @38260 has 16 MA's), (24, 38425), (30, 38482),