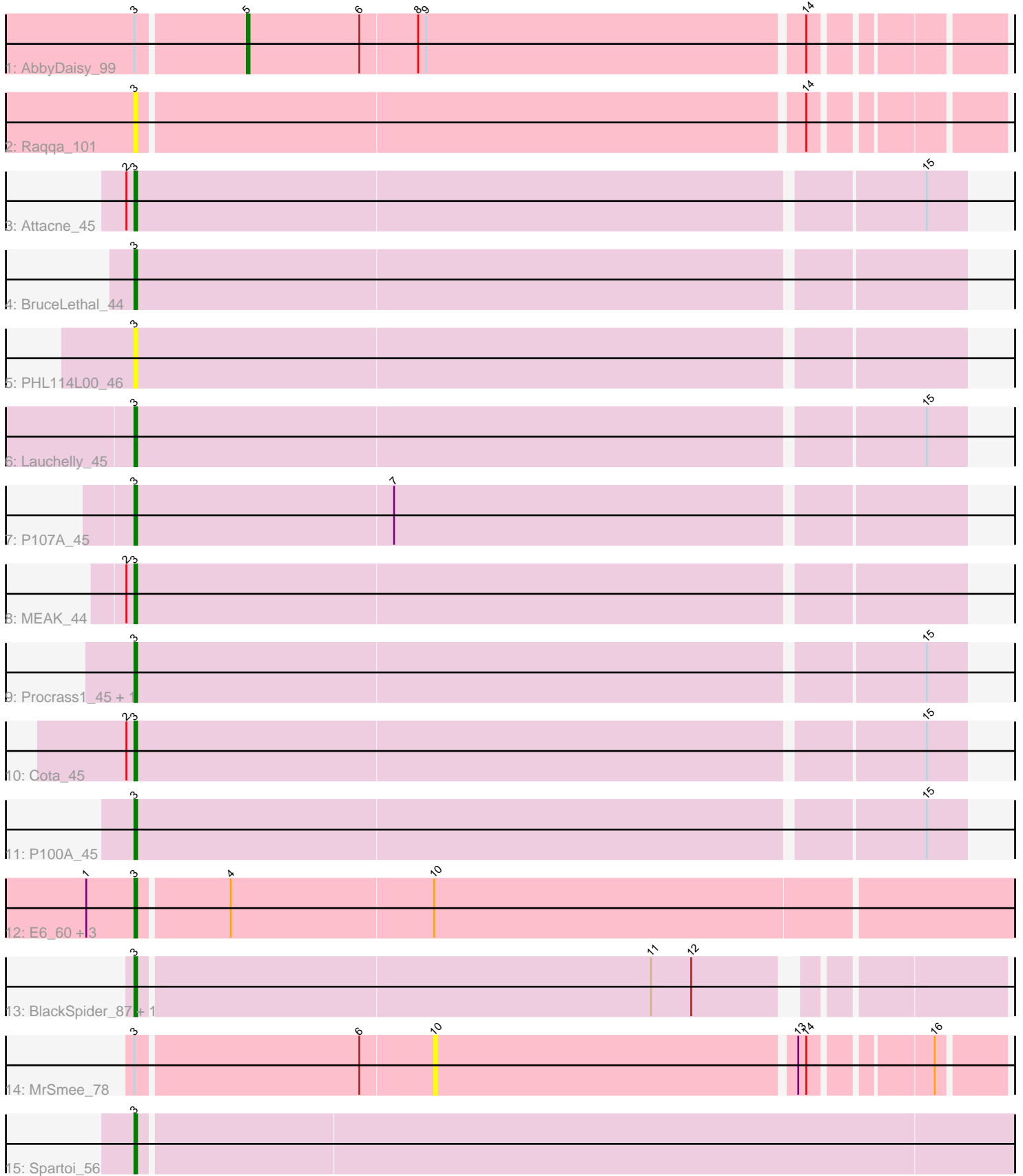


Pham 158192



Note: Tracks are now grouped by subcluster and scaled. Switching in subcluster is indicated by changes in track color. Track scale is now set by default to display the region 30 bp upstream of start 1 to 30 bp downstream of the last possible start. If this default region is judged to be packed too tightly with annotated starts, the track will be further scaled to only show that region of the ORF with annotated starts. This action will be indicated by adding "Zoomed" to the title. For starts, yellow indicates the location of called starts comprised solely of Glimmer/GeneMark auto-annotations, green indicates the location of called starts with at least 1 manual gene annotation.

Pham 158192 Report

This analysis was run 04/13/24 on database version 558.

Pham number 158192 has 20 members, 4 are drafts.

Phages represented in each track:

- Track 1 : AbbyDaisy_99
- Track 2 : Raqqa_101
- Track 3 : Attacne_45
- Track 4 : BruceLethal_44
- Track 5 : PHL114L00_46
- Track 6 : Lauchelly_45
- Track 7 : P107A_45
- Track 8 : MEAK_44
- Track 9 : Procrass1_45, P100D_47
- Track 10 : Cota_45
- Track 11 : P100A_45
- Track 12 : E6_60, B22_61, Doucette_61, G4_69
- Track 13 : BlackSpider_87, Zucker_98
- Track 14 : MrSmee_78
- Track 15 : Spartoi_56

Summary of Final Annotations (See graph section above for start numbers):

The start number called the most often in the published annotations is 3, it was called in 15 of the 16 non-draft genes in the pham.

Genes that call this "Most Annotated" start:

- Attacne_45, B22_61, BlackSpider_87, BruceLethal_44, Cota_45, Doucette_61, E6_60, G4_69, Lauchelly_45, MEAK_44, P100A_45, P100D_47, P107A_45, PHL114L00_46, Procrass1_45, Raqqa_101, Spartoi_56, Zucker_98,

Genes that have the "Most Annotated" start but do not call it:

- AbbyDaisy_99, MrSmee_78,

Genes that do not have the "Most Annotated" start:

-

Summary by start number:

Start 3:

- Found in 20 of 20 (100.0%) of genes in pham
- Manual Annotations of this start: 15 of 16
- Called 90.0% of time when present
- Phage (with cluster) where this start called: Attacne_45 (BU), B22_61 (BW), BlackSpider_87 (FN), BruceLethal_44 (BU), Cota_45 (BU), Doucette_61 (BW), E6_60 (BW), G4_69 (BW), Lauchelly_45 (BU), MEAK_44 (BU), P100A_45 (BU), P100D_47 (BU), P107A_45 (BU), PHL114L00_46 (BU), Procrass1_45 (BU), Raqqa_101 (AY), Spartoi_56 (singleton), Zucker_98 (FN),

Start 5:

- Found in 1 of 20 (5.0%) of genes in pham
- Manual Annotations of this start: 1 of 16
- Called 100.0% of time when present
- Phage (with cluster) where this start called: AbbyDaisy_99 (AY),

Start 10:

- Found in 5 of 20 (25.0%) of genes in pham
- No Manual Annotations of this start.
- Called 20.0% of time when present
- Phage (with cluster) where this start called: MrSmee_78 (UNK),

Summary by clusters:

There are 6 clusters represented in this pham: singleton, BU, BW, AY, UNK, FN,

Info for manual annotations of cluster AY:

- Start number 5 was manually annotated 1 time for cluster AY.

Info for manual annotations of cluster BU:

- Start number 3 was manually annotated 9 times for cluster BU.

Info for manual annotations of cluster BW:

- Start number 3 was manually annotated 4 times for cluster BW.

Info for manual annotations of cluster FN:

- Start number 3 was manually annotated 1 time for cluster FN.

Gene Information:

Gene: AbbyDaisy_99 Start: 54512, Stop: 54778, Start Num: 5

Candidate Starts for AbbyDaisy_99:

(Start: 3 @54473 has 15 MA's), (Start: 5 @54512 has 1 MA's), (6, 54554), (8, 54575), (9, 54578), (14, 54716),

Gene: Attacne_45 Start: 28511, Stop: 28813, Start Num: 3

Candidate Starts for Attacne_45:

(2, 28508), (Start: 3 @28511 has 15 MA's), (15, 28799),

Gene: B22_61 Start: 36822, Stop: 37160, Start Num: 3

Candidate Starts for B22_61:

(1, 36804), (Start: 3 @36822 has 15 MA's), (4, 36855), (10, 36930),

Gene: BlackSpider_87 Start: 50168, Stop: 50473, Start Num: 3

Candidate Starts for BlackSpider_87:

(Start: 3 @50168 has 15 MA's), (11, 50357), (12, 50372),

Gene: BruceLethal_44 Start: 28884, Stop: 29186, Start Num: 3

Candidate Starts for BruceLethal_44:

(Start: 3 @28884 has 15 MA's),

Gene: Cota_45 Start: 29185, Stop: 29487, Start Num: 3

Candidate Starts for Cota_45:

(2, 29182), (Start: 3 @29185 has 15 MA's), (15, 29473),

Gene: Doucette_61 Start: 37032, Stop: 37370, Start Num: 3

Candidate Starts for Doucette_61:

(1, 37014), (Start: 3 @37032 has 15 MA's), (4, 37065), (10, 37140),

Gene: E6_60 Start: 37670, Stop: 38008, Start Num: 3

Candidate Starts for E6_60:

(1, 37652), (Start: 3 @37670 has 15 MA's), (4, 37703), (10, 37778),

Gene: G4_69 Start: 38158, Stop: 38496, Start Num: 3

Candidate Starts for G4_69:

(1, 38140), (Start: 3 @38158 has 15 MA's), (4, 38191), (10, 38266),

Gene: Lauchelly_45 Start: 29153, Stop: 29455, Start Num: 3

Candidate Starts for Lauchelly_45:

(Start: 3 @29153 has 15 MA's), (15, 29441),

Gene: MEAK_44 Start: 28859, Stop: 29161, Start Num: 3

Candidate Starts for MEAK_44:

(2, 28856), (Start: 3 @28859 has 15 MA's),

Gene: MrSmee_78 Start: 40846, Stop: 41043, Start Num: 10

Candidate Starts for MrSmee_78:

(Start: 3 @40738 has 15 MA's), (6, 40819), (10, 40846), (13, 40978), (14, 40981), (16, 41020),

Gene: P100A_45 Start: 29140, Stop: 29442, Start Num: 3

Candidate Starts for P100A_45:

(Start: 3 @29140 has 15 MA's), (15, 29428),

Gene: P100D_47 Start: 29142, Stop: 29444, Start Num: 3

Candidate Starts for P100D_47:

(Start: 3 @29142 has 15 MA's), (15, 29430),

Gene: P107A_45 Start: 29101, Stop: 29403, Start Num: 3

Candidate Starts for P107A_45:

(Start: 3 @29101 has 15 MA's), (7, 29197),

Gene: PHL114L00_46 Start: 29111, Stop: 29413, Start Num: 3

Candidate Starts for PHL114L00_46:

(Start: 3 @29111 has 15 MA's),

Gene: Procrass1_45 Start: 28983, Stop: 29285, Start Num: 3

Candidate Starts for Procrass1_45:

(Start: 3 @28983 has 15 MA's), (15, 29271),

Gene: Raqqa_101 Start: 53739, Stop: 54044, Start Num: 3

Candidate Starts for Raqqa_101:

(Start: 3 @53739 has 15 MA's), (14, 53982),

Gene: Spartoi_56 Start: 34706, Stop: 35032, Start Num: 3

Candidate Starts for Spartoi_56:

(Start: 3 @34706 has 15 MA's),

Gene: Zucker_98 Start: 53075, Stop: 53380, Start Num: 3

Candidate Starts for Zucker_98:

(Start: 3 @53075 has 15 MA's), (11, 53264), (12, 53279),