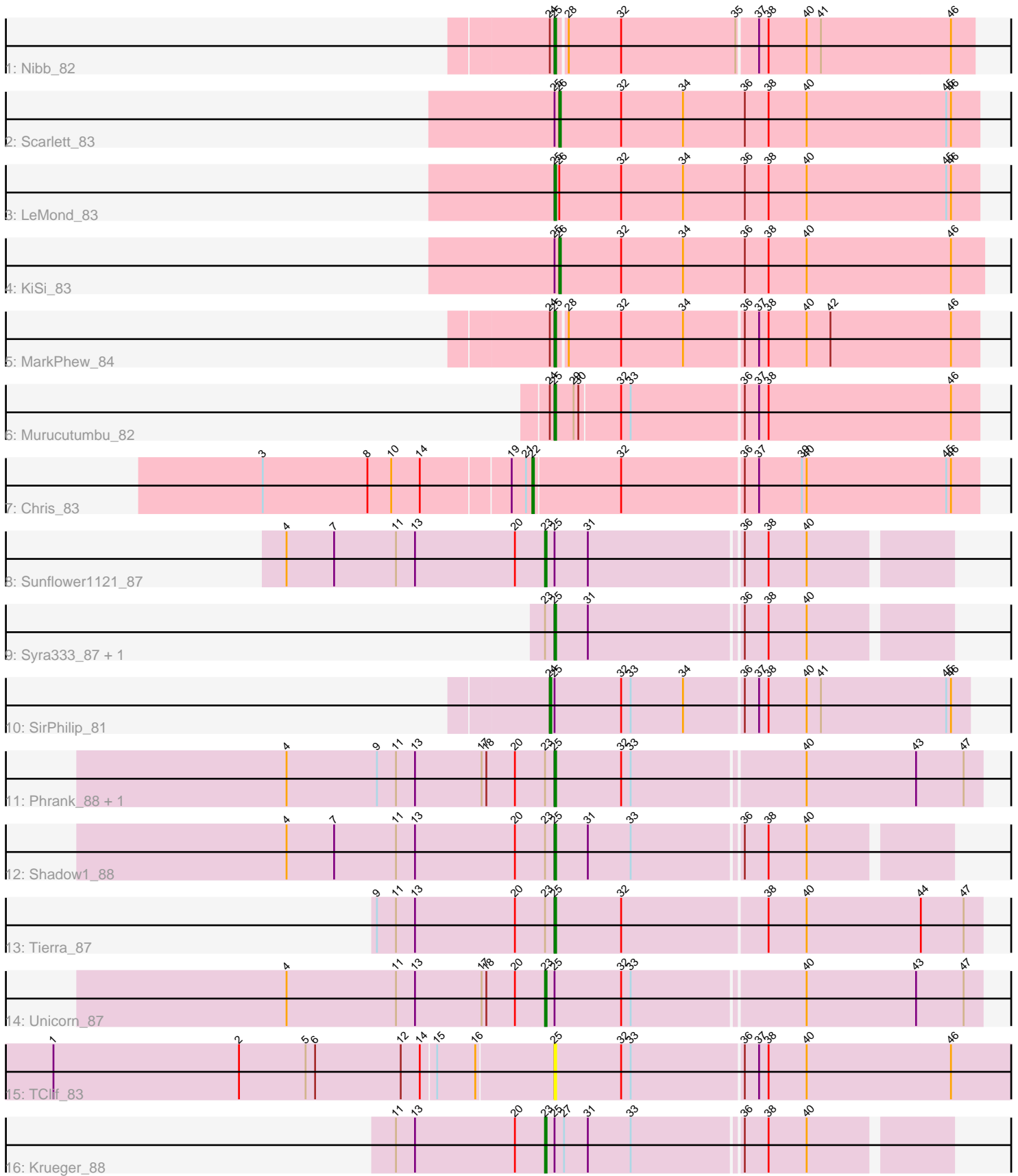


# Pham 158211



Note: Tracks are now grouped by subcluster and scaled. Switching in subcluster is indicated by changes in track color. Track scale is now set by default to display the region 30 bp upstream of start 1 to 30 bp downstream of the last possible start. If this default region is judged to be packed too tightly with annotated starts, the track will be further scaled to only show that region of the ORF with annotated starts. This action will be indicated by adding "Zoomed" to the title. For starts, yellow indicates the location of called starts comprised solely of Glimmer/GeneMark auto-annotations, green indicates the location of called starts with at least 1 manual gene annotation.

## Pham 158211 Report

This analysis was run 04/13/24 on database version 558.

Pham number 158211 has 18 members, 1 are drafts.

Phages represented in each track:

- Track 1 : Nibb\_82
- Track 2 : Scarlett\_83
- Track 3 : LeMond\_83
- Track 4 : KiSi\_83
- Track 5 : MarkPhew\_84
- Track 6 : Murucutumbu\_82
- Track 7 : Chris\_83
- Track 8 : Sunflower1121\_87
- Track 9 : Syra333\_87, Ximenita\_89
- Track 10 : SirPhilip\_81
- Track 11 : Phrank\_88, Cain\_88
- Track 12 : Shadow1\_88
- Track 13 : Tierra\_87
- Track 14 : Unicorn\_87
- Track 15 : TClif\_83
- Track 16 : Krueger\_88

### ***Summary of Final Annotations (See graph section above for start numbers):***

The start number called the most often in the published annotations is 25, it was called in 10 of the 17 non-draft genes in the pham.

Genes that call this "Most Annotated" start:

- Cain\_88, LeMond\_83, MarkPhew\_84, Murucutumbu\_82, Nibb\_82, Phrank\_88, Shadow1\_88, Syra333\_87, TClif\_83, Tierra\_87, Ximenita\_89,

Genes that have the "Most Annotated" start but do not call it:

- KiSi\_83, Krueger\_88, Scarlett\_83, SirPhilip\_81, Sunflower1121\_87, Unicorn\_87,

Genes that do not have the "Most Annotated" start:

- Chris\_83,

### **Summary by start number:**

Start 22:

- Found in 1 of 18 ( 5.6% ) of genes in pham
- Manual Annotations of this start: 1 of 17
- Called 100.0% of time when present
- Phage (with cluster) where this start called: Chris\_83 (K1),

Start 23:

- Found in 9 of 18 ( 50.0% ) of genes in pham
- Manual Annotations of this start: 3 of 17
- Called 33.3% of time when present
- Phage (with cluster) where this start called: Krueger\_88 (K6), Sunflower1121\_87 (K6), Unicorn\_87 (K6),

Start 24:

- Found in 4 of 18 ( 22.2% ) of genes in pham
- Manual Annotations of this start: 1 of 17
- Called 25.0% of time when present
- Phage (with cluster) where this start called: SirPhilip\_81 (K6),

Start 25:

- Found in 17 of 18 ( 94.4% ) of genes in pham
- Manual Annotations of this start: 10 of 17
- Called 64.7% of time when present
- Phage (with cluster) where this start called: Cain\_88 (K6), LeMond\_83 (K1), MarkPhew\_84 (K1), Murucutumbu\_82 (K1), Nibb\_82 (K1), Phrank\_88 (K6), Shadow1\_88 (K6), Syra333\_87 (K6), TClif\_83 (K6), Tierra\_87 (K6), Ximenita\_89 (K6),

Start 26:

- Found in 3 of 18 ( 16.7% ) of genes in pham
- Manual Annotations of this start: 2 of 17
- Called 66.7% of time when present
- Phage (with cluster) where this start called: KiSi\_83 (K1), Scarlett\_83 (K1),

**Summary by clusters:**

There are 2 clusters represented in this pham: K1, K6,

Info for manual annotations of cluster K1:

- Start number 22 was manually annotated 1 time for cluster K1.
- Start number 25 was manually annotated 4 times for cluster K1.
- Start number 26 was manually annotated 2 times for cluster K1.

Info for manual annotations of cluster K6:

- Start number 23 was manually annotated 3 times for cluster K6.
- Start number 24 was manually annotated 1 time for cluster K6.
- Start number 25 was manually annotated 6 times for cluster K6.

**Gene Information:**

Gene: Cain\_88 Start: 53666, Stop: 53929, Start Num: 25

Candidate Starts for Cain\_88:

(4, 53498), (9, 53555), (11, 53567), (13, 53579), (17, 53621), (18, 53624), (20, 53642), (Start: 23 @53660 has 3 MA's), (Start: 25 @53666 has 10 MA's), (32, 53708), (33, 53714), (40, 53819), (43, 53888), (47, 53918),

Gene: Chris\_83 Start: 53462, Stop: 53737, Start Num: 22

Candidate Starts for Chris\_83:

(3, 53297), (8, 53363), (10, 53378), (14, 53396), (19, 53450), (21, 53459), (Start: 22 @53462 has 1 MA's), (32, 53516), (36, 53591), (37, 53600), (39, 53627), (40, 53630), (45, 53717), (46, 53720),

Gene: KiSi\_83 Start: 53332, Stop: 53598, Start Num: 26

Candidate Starts for KiSi\_83:

(Start: 25 @53329 has 10 MA's), (Start: 26 @53332 has 2 MA's), (32, 53371), (34, 53410), (36, 53449), (38, 53464), (40, 53488), (46, 53578),

Gene: Krueger\_88 Start: 53939, Stop: 54181, Start Num: 23

Candidate Starts for Krueger\_88:

(11, 53846), (13, 53858), (20, 53921), (Start: 23 @53939 has 3 MA's), (Start: 25 @53945 has 10 MA's), (27, 53951), (31, 53966), (33, 53993), (36, 54059), (38, 54074), (40, 54098),

Gene: LeMond\_83 Start: 53391, Stop: 53657, Start Num: 25

Candidate Starts for LeMond\_83:

(Start: 25 @53391 has 10 MA's), (Start: 26 @53394 has 2 MA's), (32, 53433), (34, 53472), (36, 53511), (38, 53526), (40, 53550), (45, 53637), (46, 53640),

Gene: MarkPhew\_84 Start: 53449, Stop: 53709, Start Num: 25

Candidate Starts for MarkPhew\_84:

(Start: 24 @53446 has 1 MA's), (Start: 25 @53449 has 10 MA's), (28, 53455), (32, 53488), (34, 53527), (36, 53563), (37, 53572), (38, 53578), (40, 53602), (42, 53617), (46, 53692),

Gene: Murucutumbu\_82 Start: 54127, Stop: 54387, Start Num: 25

Candidate Starts for Murucutumbu\_82:

(Start: 24 @54124 has 1 MA's), (Start: 25 @54127 has 10 MA's), (29, 54139), (30, 54142), (32, 54166), (33, 54172), (36, 54241), (37, 54250), (38, 54256), (46, 54370),

Gene: Nibb\_82 Start: 52761, Stop: 53018, Start Num: 25

Candidate Starts for Nibb\_82:

(Start: 24 @52758 has 1 MA's), (Start: 25 @52761 has 10 MA's), (28, 52767), (32, 52800), (35, 52872), (37, 52884), (38, 52890), (40, 52914), (41, 52923), (46, 53004),

Gene: Phrank\_88 Start: 53653, Stop: 53916, Start Num: 25

Candidate Starts for Phrank\_88:

(4, 53485), (9, 53542), (11, 53554), (13, 53566), (17, 53608), (18, 53611), (20, 53629), (Start: 23 @53647 has 3 MA's), (Start: 25 @53653 has 10 MA's), (32, 53695), (33, 53701), (40, 53806), (43, 53875), (47, 53905),

Gene: Scarlett\_83 Start: 53191, Stop: 53454, Start Num: 26

Candidate Starts for Scarlett\_83:

(Start: 25 @53188 has 10 MA's), (Start: 26 @53191 has 2 MA's), (32, 53230), (34, 53269), (36, 53308), (38, 53323), (40, 53347), (45, 53434), (46, 53437),

Gene: Shadow1\_88 Start: 54085, Stop: 54321, Start Num: 25

Candidate Starts for Shadow1\_88:

(4, 53917), (7, 53947), (11, 53986), (13, 53998), (20, 54061), (Start: 23 @54079 has 3 MA's), (Start: 25 @54085 has 10 MA's), (31, 54106), (33, 54133), (36, 54199), (38, 54214), (40, 54238),

Gene: SirPhilip\_81 Start: 53235, Stop: 53495, Start Num: 24

Candidate Starts for SirPhilip\_81:

(Start: 24 @53235 has 1 MA's), (Start: 25 @53238 has 10 MA's), (32, 53280), (33, 53286), (34, 53319), (36, 53355), (37, 53364), (38, 53370), (40, 53394), (41, 53403), (45, 53481), (46, 53484),

Gene: Sunflower1121\_87 Start: 53623, Stop: 53865, Start Num: 23

Candidate Starts for Sunflower1121\_87:

(4, 53461), (7, 53491), (11, 53530), (13, 53542), (20, 53605), (Start: 23 @53623 has 3 MA's), (Start: 25 @53629 has 10 MA's), (31, 53650), (36, 53743), (38, 53758), (40, 53782),

Gene: Syra333\_87 Start: 53998, Stop: 54234, Start Num: 25

Candidate Starts for Syra333\_87:

(Start: 23 @53992 has 3 MA's), (Start: 25 @53998 has 10 MA's), (31, 54019), (36, 54112), (38, 54127), (40, 54151),

Gene: TClif\_83 Start: 52831, Stop: 53172, Start Num: 25

Candidate Starts for TClif\_83:

(1, 52519), (2, 52636), (5, 52678), (6, 52684), (12, 52738), (14, 52750), (15, 52759), (16, 52783), (Start: 25 @52831 has 10 MA's), (32, 52873), (33, 52879), (36, 52948), (37, 52957), (38, 52963), (40, 52987), (46, 53077),

Gene: Tierra\_87 Start: 54067, Stop: 54333, Start Num: 25

Candidate Starts for Tierra\_87:

(9, 53956), (11, 53968), (13, 53980), (20, 54043), (Start: 23 @54061 has 3 MA's), (Start: 25 @54067 has 10 MA's), (32, 54109), (38, 54199), (40, 54223), (44, 54295), (47, 54322),

Gene: Unicorn\_87 Start: 53787, Stop: 54056, Start Num: 23

Candidate Starts for Unicorn\_87:

(4, 53625), (11, 53694), (13, 53706), (17, 53748), (18, 53751), (20, 53769), (Start: 23 @53787 has 3 MA's), (Start: 25 @53793 has 10 MA's), (32, 53835), (33, 53841), (40, 53946), (43, 54015), (47, 54045),

Gene: Ximenita\_89 Start: 54322, Stop: 54558, Start Num: 25

Candidate Starts for Ximenita\_89:

(Start: 23 @54316 has 3 MA's), (Start: 25 @54322 has 10 MA's), (31, 54343), (36, 54436), (38, 54451), (40, 54475),