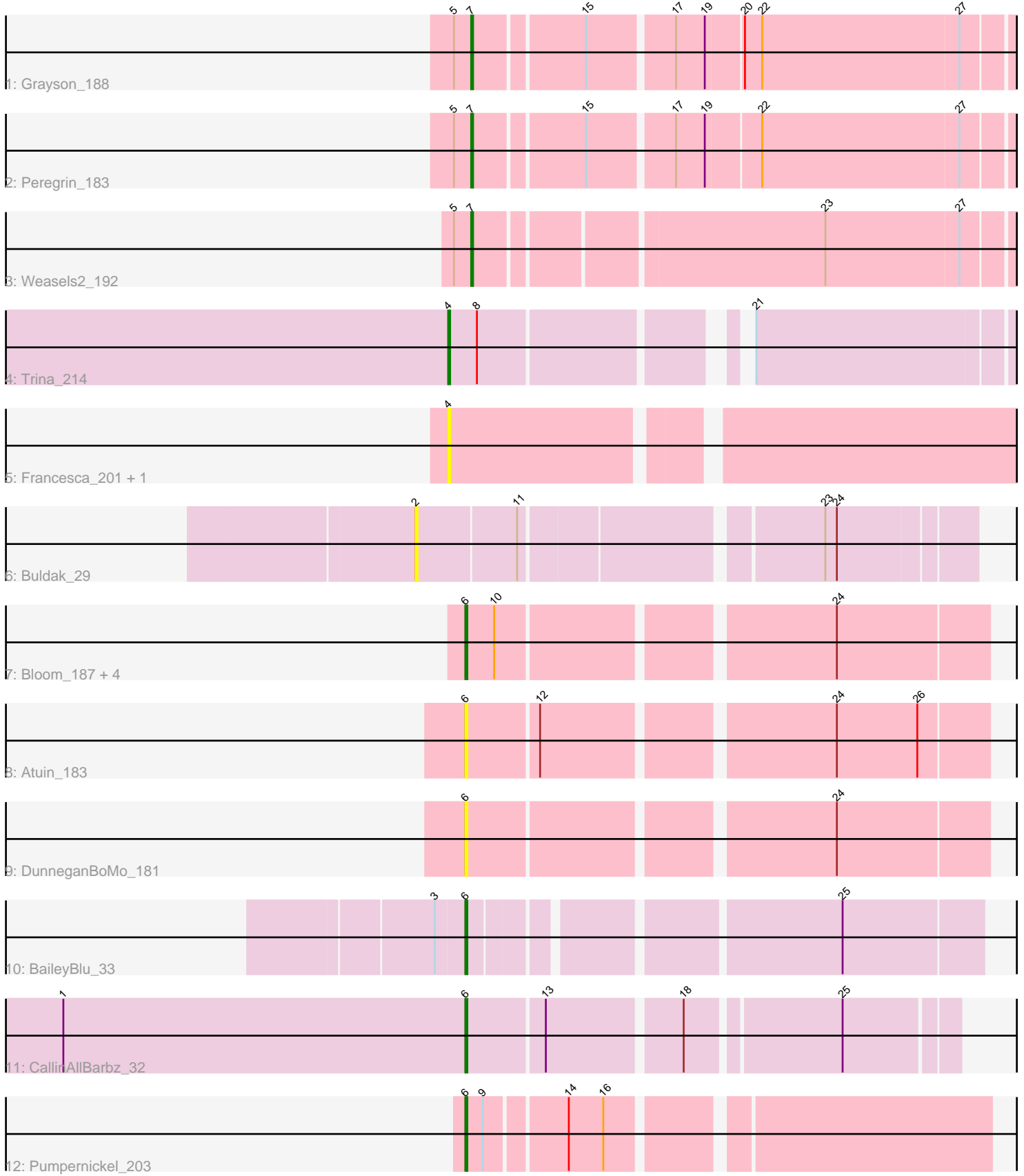


Pham 158220



Note: Tracks are now grouped by subcluster and scaled. Switching in subcluster is indicated by changes in track color. Track scale is now set by default to display the region 30 bp upstream of start 1 to 30 bp downstream of the last possible start. If this default region is judged to be packed too tightly with annotated starts, the track will be further scaled to only show that region of the ORF with annotated starts. This action will be indicated by adding "Zoomed" to the title. For starts, yellow indicates the location of called starts comprised solely of Glimmer/GeneMark auto-annotations, green indicates the location of called starts with at least 1 manual gene annotation.

Pham 158220 Report

This analysis was run 04/13/24 on database version 558.

Pham number 158220 has 17 members, 9 are drafts.

Phages represented in each track:

- Track 1 : Grayson_188
- Track 2 : Peregrin_183
- Track 3 : Weasels2_192
- Track 4 : Trina_214
- Track 5 : Francesca_201, Dorin_198
- Track 6 : Buldak_29
- Track 7 : Bloom_187, Mimi_189, Talia1610_186, Patbob_182, Racecar_184
- Track 8 : Atuin_183
- Track 9 : DunneganBoMo_181
- Track 10 : BaileyBlu_33
- Track 11 : CallinAllBarbz_32
- Track 12 : Pumpernickel_203

Summary of Final Annotations (See graph section above for start numbers):

The start number called the most often in the published annotations is 6, it was called in 4 of the 8 non-draft genes in the pham.

Genes that call this "Most Annotated" start:

- Atuin_183, BaileyBlu_33, Bloom_187, CallinAllBarbz_32, DunneganBoMo_181, Mimi_189, Patbob_182, Pumpernickel_203, Racecar_184, Talia1610_186,

Genes that have the "Most Annotated" start but do not call it:

-

Genes that do not have the "Most Annotated" start:

- Buldak_29, Dorin_198, Francesca_201, Grayson_188, Peregrin_183, Trina_214, Weasels2_192,

Summary by start number:

Start 2:

- Found in 1 of 17 (5.9%) of genes in pham
- No Manual Annotations of this start.

- Called 100.0% of time when present
- Phage (with cluster) where this start called: Buldak_29 (EB),

Start 4:

- Found in 3 of 17 (17.6%) of genes in pham
- Manual Annotations of this start: 1 of 8
- Called 100.0% of time when present
- Phage (with cluster) where this start called: Dorin_198 (CG), Francesca_201 (CG), Trina_214 (CE),

Start 6:

- Found in 10 of 17 (58.8%) of genes in pham
- Manual Annotations of this start: 4 of 8
- Called 100.0% of time when present
- Phage (with cluster) where this start called: Atuin_183 (FC), BaileyBlu_33 (FP), Bloom_187 (FC), CallinAllBarbz_32 (FP), DunneganBoMo_181 (FC), Mimi_189 (FC), Patbob_182 (FC), Pumpernickel_203 (GD4), Racecar_184 (FC), Talia1610_186 (FC),

Start 7:

- Found in 3 of 17 (17.6%) of genes in pham
- Manual Annotations of this start: 3 of 8
- Called 100.0% of time when present
- Phage (with cluster) where this start called: Grayson_188 (CB), Peregrin_183 (CB), Weasels2_192 (CB),

Summary by clusters:

There are 7 clusters represented in this pham: FP, GD4, CB, CG, CE, EB, FC,

Info for manual annotations of cluster CB:

- Start number 7 was manually annotated 3 times for cluster CB.

Info for manual annotations of cluster CE:

- Start number 4 was manually annotated 1 time for cluster CE.

Info for manual annotations of cluster FC:

- Start number 6 was manually annotated 1 time for cluster FC.

Info for manual annotations of cluster FP:

- Start number 6 was manually annotated 2 times for cluster FP.

Info for manual annotations of cluster GD4:

- Start number 6 was manually annotated 1 time for cluster GD4.

Gene Information:

Gene: Atuin_183 Start: 122575, Stop: 122829, Start Num: 6

Candidate Starts for Atuin_183:

(Start: 6 @122575 has 4 MA's), (12, 122611), (24, 122752), (26, 122794),

Gene: BaileyBlu_33 Start: 24089, Stop: 24334, Start Num: 6

Candidate Starts for BaileyBlu_33:

(3, 24074), (Start: 6 @24089 has 4 MA's), (25, 24263),

Gene: Bloom_187 Start: 122149, Stop: 122403, Start Num: 6

Candidate Starts for Bloom_187:

(Start: 6 @122149 has 4 MA's), (10, 122164), (24, 122326),

Gene: Buldak_29 Start: 20601, Stop: 20870, Start Num: 2

Candidate Starts for Buldak_29:

(2, 20601), (11, 20652), (23, 20796), (24, 20802),

Gene: CallinAllBarbz_32 Start: 24070, Stop: 24306, Start Num: 6

Candidate Starts for CallinAllBarbz_32:

(1, 23860), (Start: 6 @24070 has 4 MA's), (13, 24109), (18, 24175), (25, 24250),

Gene: Dorin_198 Start: 108945, Stop: 109226, Start Num: 4

Candidate Starts for Dorin_198:

(Start: 4 @108945 has 1 MA's),

Gene: DunneganBoMo_181 Start: 119214, Stop: 119468, Start Num: 6

Candidate Starts for DunneganBoMo_181:

(Start: 6 @119214 has 4 MA's), (24, 119391),

Gene: Francesca_201 Start: 109865, Stop: 110146, Start Num: 4

Candidate Starts for Francesca_201:

(Start: 4 @109865 has 1 MA's),

Gene: Grayson_188 Start: 98685, Stop: 98954, Start Num: 7

Candidate Starts for Grayson_188:

(5, 98676), (Start: 7 @98685 has 3 MA's), (15, 98739), (17, 98781), (19, 98796), (20, 98814), (22, 98823), (27, 98925),

Gene: Mimi_189 Start: 121776, Stop: 122030, Start Num: 6

Candidate Starts for Mimi_189:

(Start: 6 @121776 has 4 MA's), (10, 121791), (24, 121953),

Gene: Patbob_182 Start: 122338, Stop: 122592, Start Num: 6

Candidate Starts for Patbob_182:

(Start: 6 @122338 has 4 MA's), (10, 122353), (24, 122515),

Gene: Peregrin_183 Start: 97131, Stop: 97400, Start Num: 7

Candidate Starts for Peregrin_183:

(5, 97122), (Start: 7 @97131 has 3 MA's), (15, 97185), (17, 97227), (19, 97242), (22, 97269), (27, 97371),

Gene: Pumpernickel_203 Start: 117028, Stop: 116777, Start Num: 6

Candidate Starts for Pumpernickel_203:

(Start: 6 @117028 has 4 MA's), (9, 117019), (14, 116980), (16, 116962),

Gene: Racecar_184 Start: 122742, Stop: 122996, Start Num: 6

Candidate Starts for Racecar_184:

(Start: 6 @122742 has 4 MA's), (10, 122757), (24, 122919),

Gene: Talia1610_186 Start: 122159, Stop: 122413, Start Num: 6

Candidate Starts for Talia1610_186:

(Start: 6 @122159 has 4 MA's), (10, 122174), (24, 122336),

Gene: Trina_214 Start: 114781, Stop: 115047, Start Num: 4

Candidate Starts for Trina_214:

(Start: 4 @114781 has 1 MA's), (8, 114796), (21, 114913),

Gene: Weasels2_192 Start: 102336, Stop: 102605, Start Num: 7

Candidate Starts for Weasels2_192:

(5, 102327), (Start: 7 @102336 has 3 MA's), (23, 102507), (27, 102576),